



Unpack the Machine

- Please confirm the included items against the illustration printed on the lid of the packing box.
- A USB cable is necessary to connect the machine with your computer.

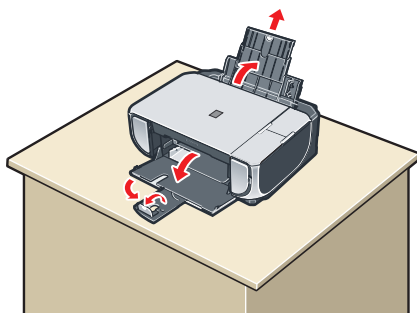
Important

When cleaning the exterior of the machine, use a soft cloth to wipe it gently. For details, refer to "Cleaning Your Machine" in the Quick Start Guide.

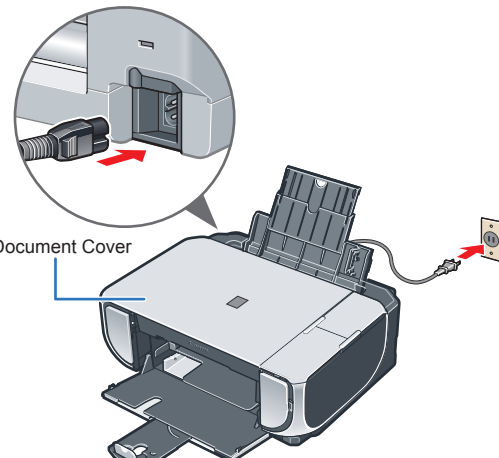
1 Prepare the Machine

1 Place the machine on a flat and horizontal surface, and do not place any objects in front of the machine. Open the Sheet Feeder Cover and pull out the Paper Support, and then open the Front Tray and extend the Output Paper Support.

Caution
Before turning on the machine, remove all the shipping tapes and protective material on the outside of the machine. Then open the Front Tray.



2 Plug the power cord in the back of the machine and connect the other end to the wall outlet.

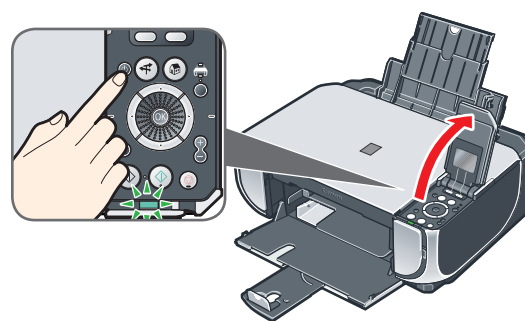


Important

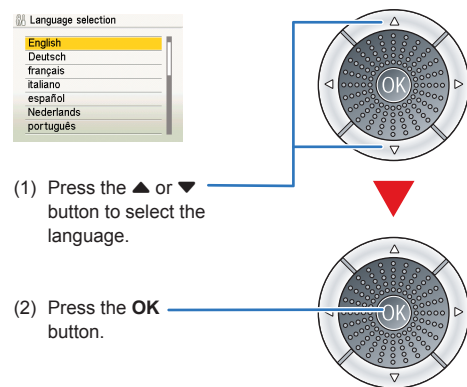
- Plug the power cord all the way in, since it may be difficult to plug.
- Make sure that the Document Cover is closed.
- Do NOT connect the USB cable at this stage.

3 Open the Operation Panel, then press the ON/OFF button to turn on the machine.

The machine will initialize. Wait until the Power lamp stops flashing and remains lit green.



4 Use the ▲ or ▼ button on the Operation Panel to select the language for the LCD, then press the OK button.



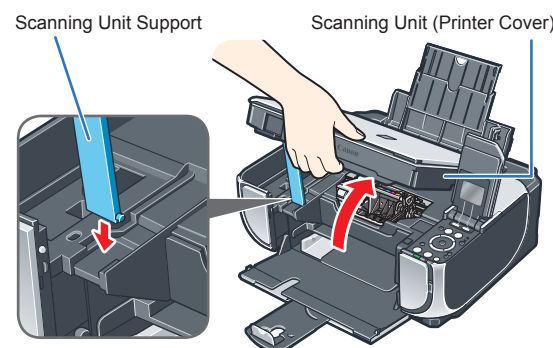
(1) Press the ▲ or ▼ button to select the language.

(2) Press the OK button.

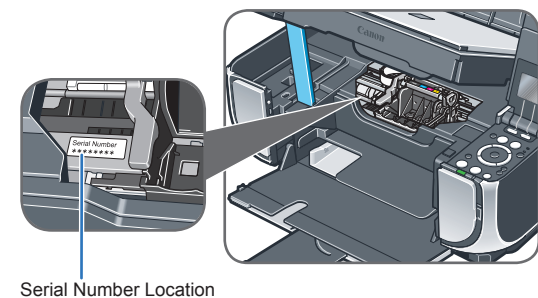
Important
If an unintended language is displayed on the LCD, press the Back button on the Operation Panel to return to the Language selection screen.

Once the message "Install the print head and set the ink tank." appears, go to **5**.

5 Lift the Scanning Unit (Printer Cover) open, and set the Scanning Unit Support to hold the cover. The Print Head Holder moves to the center.

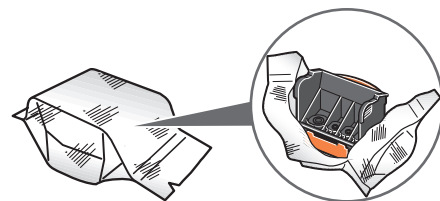


6 Write down the serial number located inside the machine. You will need this to register your product.



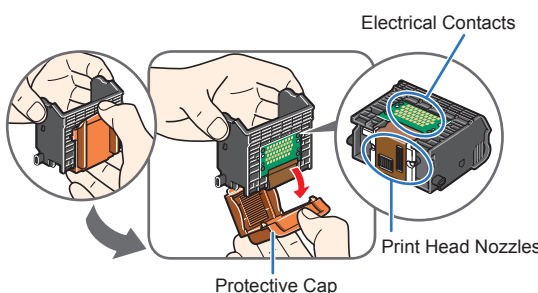
2 Install the Print Head

1 Remove the Print Head from its package.



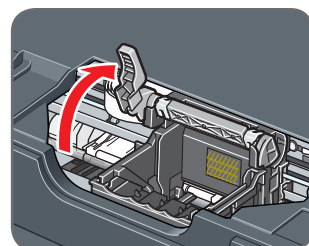
Caution
There may be some transparent or light blue ink on the inside of the bag the print head comes in, or the inside of the protective cap - this has no effect on print quality. Be careful not to get ink on yourself when handling these items.

2 Remove the orange protective cap from the Print Head and discard it.

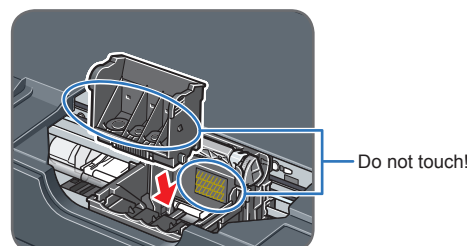


Note
Do not touch the print head nozzles and the electrical contacts.

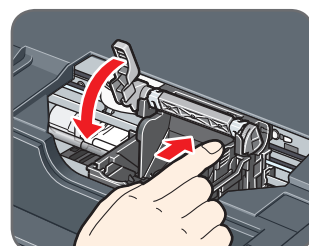
3 Firmly raise the Print Head Lock Lever until it stops. The Print Head Lock Lever may feel heavy.



4 Insert the Print Head.



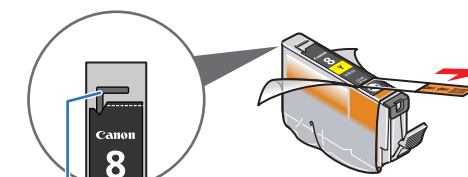
5 Push the Print Head to hold it in place, and lower the Print Head Lock Lever carefully.



3 Install the Ink Tanks

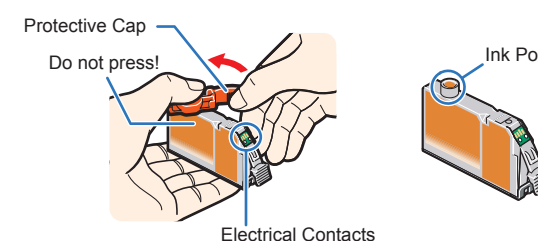
Note
For the ink tanks compatible with this machine, refer to the back cover of the Quick Start Guide.

1 Pull the orange tape in the direction of the arrow to peel off the protective film and remove the film completely.



If the air hole is blocked with the remaining film, ink may leak out or may not eject properly.

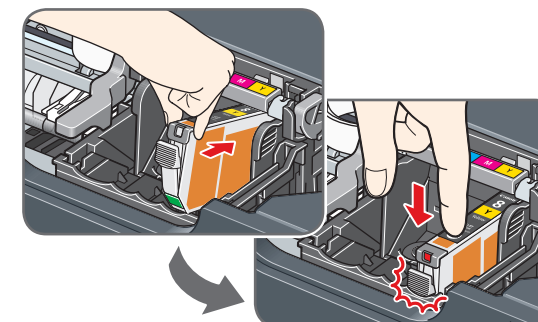
2 Twist off and discard the orange protective cap located on the bottom of the ink tank.



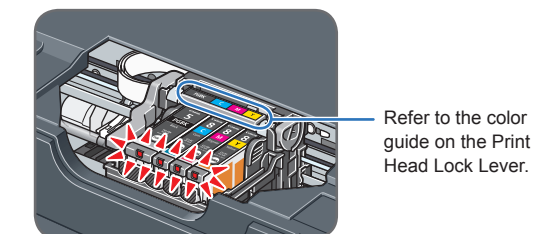
Important

- Do not touch the electrical contacts.
- Do not touch the ink port.

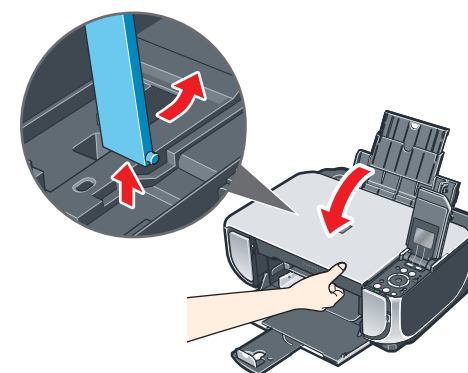
3 Insert the ink tank into the right-hand slot and press the mark on the ink tank until it clicks into place.



4 Make sure the ink lamp lights red.



5 Lift the Scanning Unit (Printer Cover) slightly to set the Scanning Unit Support back to its original position, and then gently close the Scanning Unit (Printer Cover).



Important
The machine starts the preparatory operation. It takes about 2 minutes. Do not start another operation until the machine has stopped making operating noises.

6 When the message "Perform head alignment if colors/lines are misaligned" is displayed, press the OK button. The copy standby screen will be displayed.

Important
When printing for the first or second time after setup, the print will take a minute or two before it becomes ready to print.

Note

- If lines are misaligned or the print result is not satisfactory, perform the print head alignment. Refer to "Aligning the Print Head" in "Routine Maintenance" of the Quick Start Guide.
- If the Alarm lamp is lit and an error message is displayed on the LCD, refer to "An Error Message Is Displayed on the LCD" in "Troubleshooting" of the Quick Start Guide.

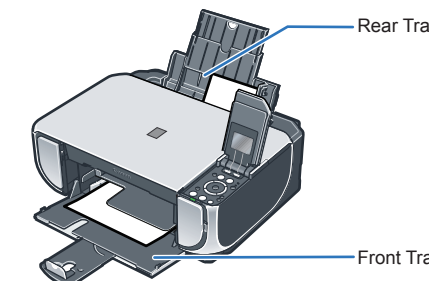
Hardware setup is complete.

Loading Paper

This machine offers two paper sources to load printing paper; the Rear Tray, found at the top of the machine, and the Front Tray, found at the front of the machine.

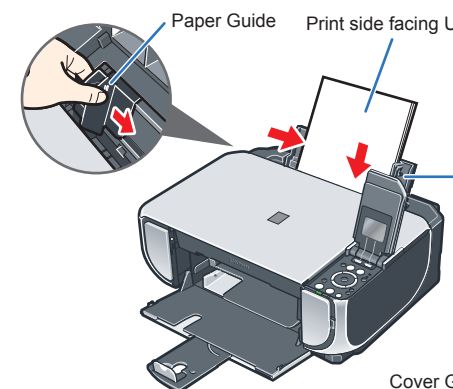
Note

- At purchase, the machine is set to feed from the Rear Tray.
- You can load A4, Letter, or B5-sized plain paper in the Front Tray. When using any other type of paper, load it in the Rear Tray.
- For loading paper in the Front Tray, refer to "Loading Paper" in the Quick Start Guide.



Loading Paper in the Rear Tray

- 1 Load the paper in the Rear Tray with the print side facing UP.
- 2 Align the paper stack against the Cover Guide on the right side of the Paper Support.
- 3 Pinch the Paper Guide and slide it against the left side of the paper stack.



Windows® Software Installation

Windows

Note

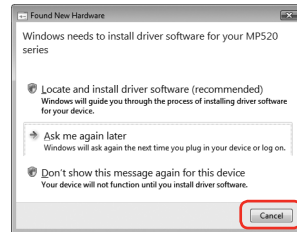
- The screens below refer to Windows Vista™ operating system Ultimate Edition (hereafter referred to as "Windows Vista") installation. Screens may vary depending on the operating system you are using.
- Log into a user account with the administrator privilege.
- Before installing the driver, disable all anti-virus programs and automatically loading programs.
- A message asking for your confirmation to restart your computer may appear during the installation process. If this message is displayed, follow the on-screen instructions and click **OK**. The installation resumes from where it left off when your computer has been restarted.
- If the computer is restarted during installation, do not remove the *Setup CD-ROM* during restarting.

- Be sure to **TURN THE MACHINE OFF** before continuing.
 - Press the **ON/OFF** button.
 - Make sure that the **Power** lamp stops flashing.

- Turn the computer on and start Windows.

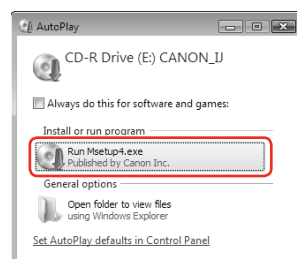
Important

If the **Found New Hardware** or **Found New Hardware Wizard** screen appears automatically, remove the USB cable connected to your computer. Click **Cancel** to quit the screen. In Windows Vista, the screen may close automatically when the USB cable is unplugged. Then turn off the machine and proceed from step 3 to install the MP Drivers.

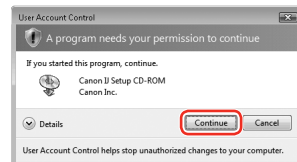


- Insert the *Setup CD-ROM*. The setup program should run automatically. In Windows Vista, go to Step 4. In Windows XP and Windows 2000, go to Step 6.

- If the **AutoPlay** screen appears, click **Run Msetup4.exe**.



- If the **User Account Control** screen appears, click **Continue**. If the same screen reappears in subsequent steps, click **Continue**.



- When the main menu appears, click **Easy Install**.

The MP Drivers, On-screen Manuals, and application software are installed automatically.



Note

If you want to select particular items to install, click **Custom Install** and follow the on-screen instructions to proceed the installation.

- When the list of applications to install appears, confirm the contents, click **Install**.

Note

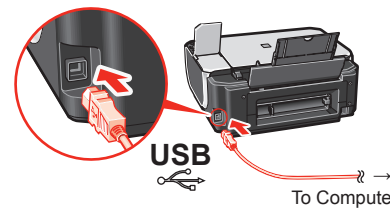
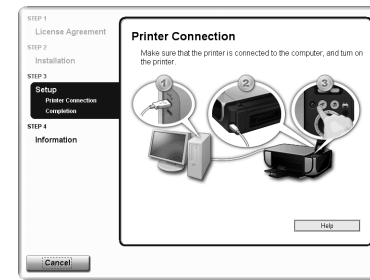
Move the cursor over items to display explanations of each application.

- Read the License Agreement carefully and click **Yes**. The software installation screen may appear during the installation process. Follow the on-screen instructions to install the software.

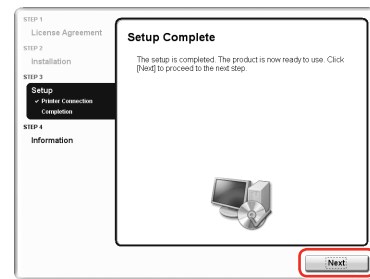
- When the **Printer Connection** screen appears, connect one end of the USB cable to the computer, the other to the machine, then **TURN THE MACHINE ON**. The software will begin identifying the printer port being used.

Important

If you cannot go to the next procedure after three minutes, refer to "Troubleshooting" instructions in the *Quick Start Guide*.



- When the **Setup Complete** screen appears, click **Next**.



- When the **User Registration** screen appears, click **Next**.

Note

To register later, click **Cancel** and go to Step 12. After software installation is complete, double-click on the desktop.

Follow the on-screen instructions to register your product. You will need your product serial number, which is located on the inside of the machine. See Step 1- 6 on the front page.

- When the **PIXMA Extended Survey Program** screen appears, confirm the message. We would appreciate it if you would take part in this program regarding the use of Canon printers. If you can agree, click **Agree**.

- When the **Installation completed successfully** screen appears, click **Exit**.

After clicking **Exit**, remove the CD-ROM.

If **Restart** is displayed, make sure that the **Restart the system now (recommended)** check box is selected, then click **Restart**.

Remove the CD-ROM after clicking **Restart** and restarting the computer.

Important

When printing for the first or second time after setup, the print will take a minute or two before it becomes ready to print.

Note

Keep the CD-ROM in a safe place in case you need to reinstall the software.

Software installation is now complete.

Macintosh® Software Installation

Macintosh

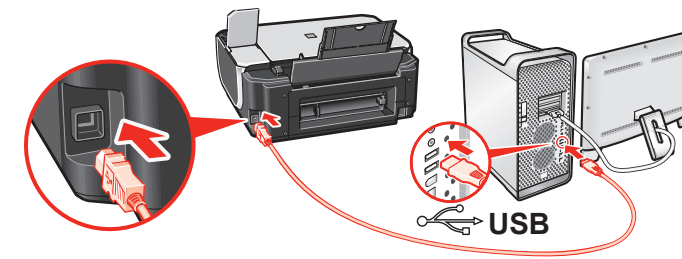
Note

- Since Mac OS 9, Mac OS X Classic environments, or Mac OS X v.10.2.7 or earlier are not supported, do not connect the machine to these.
- The screens below refer to Mac OS X v.10.4.x installation. Screens may vary depending on the operating system you are using.
- Log on as an Administrator.
- Before installing the driver, disable all anti-virus programs and automatically loading programs.

- Connect one end of the USB cable to the computer, the other to the machine.

Note

Make sure the machine is turned on.



- Turn on your Mac and insert the *Setup CD-ROM*.

Note

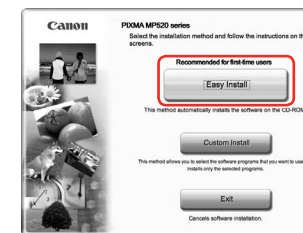
If the **CD-ROM** folder does not open automatically, double-click the **CD-ROM** icon on the desktop.

- Double-click the **Setup** icon.

- When the **Authenticate** screen appears, enter your administrator name and password. Click **OK**. If you do not know your administrator name or password, click , then follow the on-screen instructions.

- When the main menu appears, click **Easy Install**.

The MP Drivers, On-screen Manuals, and application software are installed automatically.



Note

If you want to select particular items to install, click **Custom Install** and follow the on-screen instructions to proceed the installation.

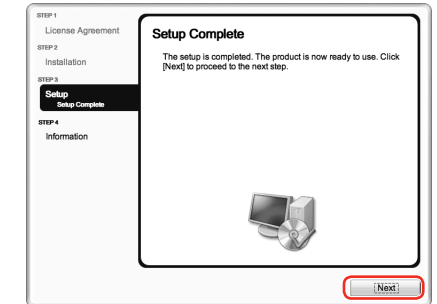
- When the list of applications to install appears, confirm the contents, then click **Install**.

Note

Move the cursor over items to display explanations of each application.

- Read the License Agreement carefully and click **Yes**. The software installation screen may appear during the installation process. Follow the on-screen instructions to install the software.

- When the **Setup Complete** screen appears, click **Next**.



- When the **User Registration** screen appears, click **Next**.

Note

To register later, click **Cancel** and go to Step 10. After software installation is complete, double-click on the desktop.

Follow the on-screen instructions to register your product. You will need your product serial number, which is located on the inside of the machine. See Step 1- 6 on the front page.

- When the **Installation completed successfully** screen appears, click **Restart**.

Remove the CD-ROM after clicking **Restart** and restarting the computer.

Note

Keep the CD-ROM in a safe place in case you need to reinstall the software.



The system is restarted automatically.

When using Mac OS X v.10.2.8 to v.10.3.3:

Restarting the computer while connected to the machine may cause the machine not to be detected. To resolve this, either unplug the USB cable then plug it back in again, or turn the machine off then back on again.

Important

When printing for the first or second time after setup, the print will take a minute or two before it becomes ready to print.

Note

When using Mac OS X v.10.2.8 to v.10.3.x, before using the Operation Panel on the machine to save originals scanned from the Platen Glass to the computer, it is necessary to select **MP Navigator EX** as the launch application on Image Capture under **Applications**. For details, refer to "Scanning Images" in the *User's Guide* on-screen manual.

Software installation is now complete.