



Canon

# Start Here

Easy Setup Instructions

PIXMA MP190 series  
Photo All-In-One

**Important**  
When cleaning the exterior of the machine, use a soft cloth to wipe it gently. For details, refer to "Cleaning Your Machine" in the Quick Start Guide.

## 1 Prepare the Machine

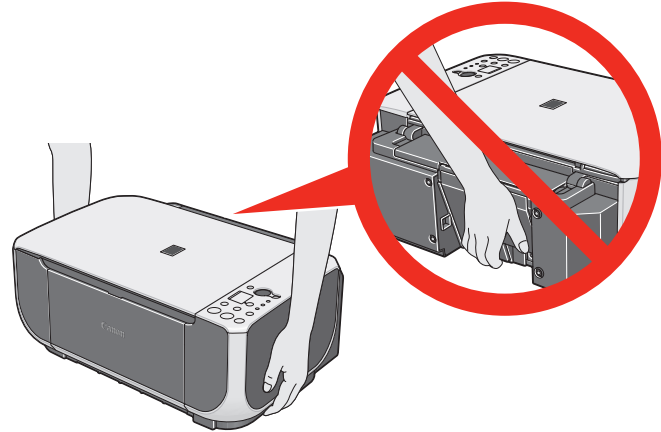
### 1 Unpack the Machine.

Confirm the included items referring to the illustration printed on the lid of the packing box or "Included Items" in the Quick Start Guide.

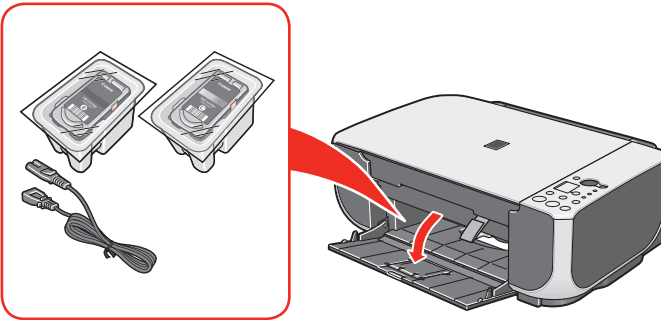
A USB cable is necessary to connect the machine with your computer.

Remove all the shipping tapes and protective material on the outside of the machine.

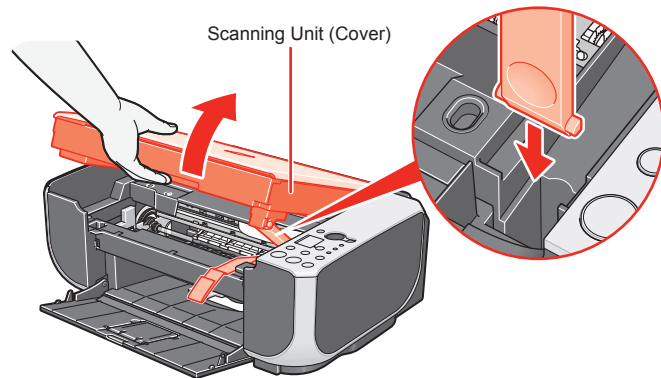
**Important**  
When moving the machine, carry the machine at both ends as shown below. Do not lift the machine by grasping the Paper Support Extension.



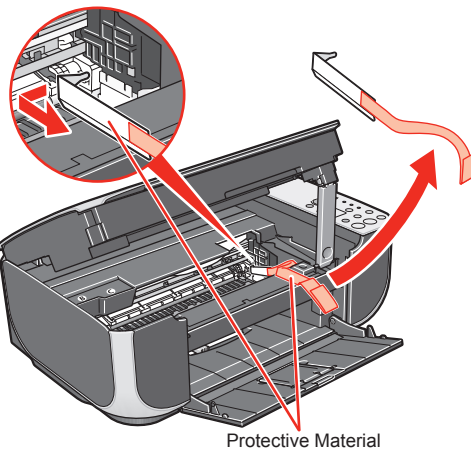
### 2 Open the Paper Output Tray, then take out the power cord and the Black and Color FINE Cartridges from inside the machine.



### 3 Lift the Scanning Unit (Cover), and pull the Scanning Unit Support down into place.

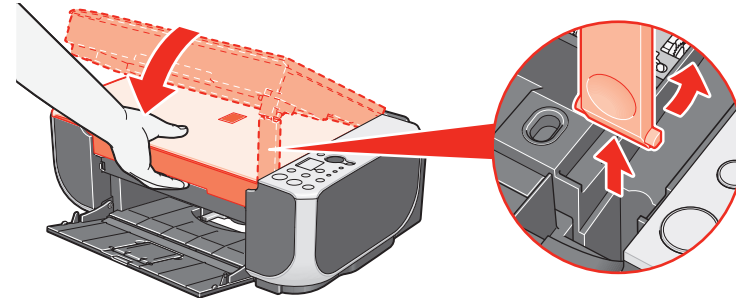


### 4 Remove the protective material on the right side.

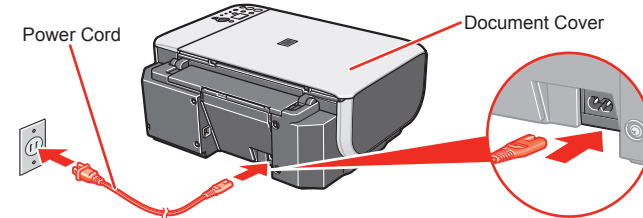


**Caution**  
Before turning on the machine, remove all of the shipping tapes.

### 5 Lift the Scanning Unit (Cover) slightly to set the Scanning Unit Support back to its original position, and then gently close the Scanning Unit (Cover).

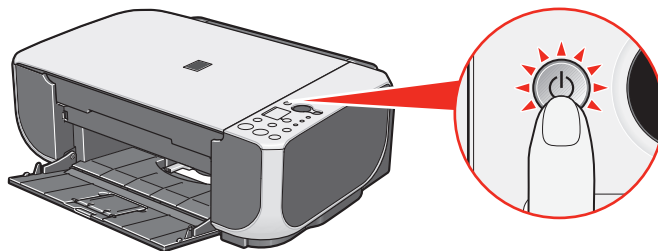


### 6 Plug the power cord in the back of the machine and connect the other end to the wall outlet.

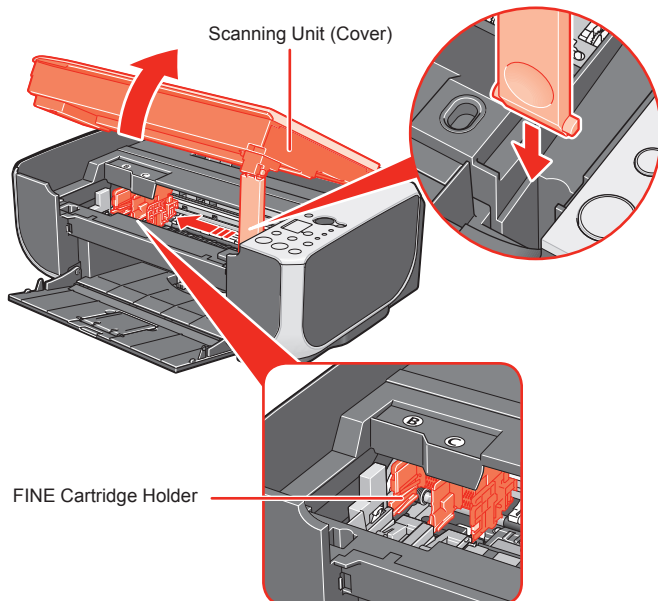


**Important**  
• Make sure that the Document Cover is closed.  
• Do NOT connect the USB cable at this stage.

### 7 Press the ON button to turn on the machine. The machine will initialize. Wait until the Power lamp stops flashing and remains lit green.



### 8 Lift the Scanning Unit (Cover), and pull the Scanning Unit Support down into place. Wait until the FINE Cartridge Holder has moved to the left automatically and stop.

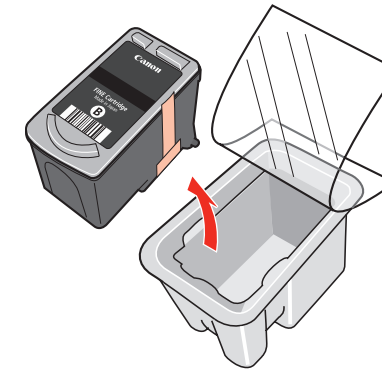


**Caution**  
Do not touch internal parts other than the FINE Cartridge Holder.

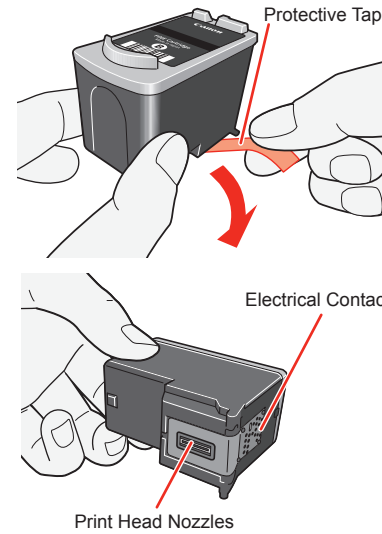
## 2 Install the FINE Cartridges

**Note**  
For the FINE Cartridges compatible with this machine, refer to the back cover of the Quick Start Guide.

### 1 Remove the Black FINE Cartridge from its box.



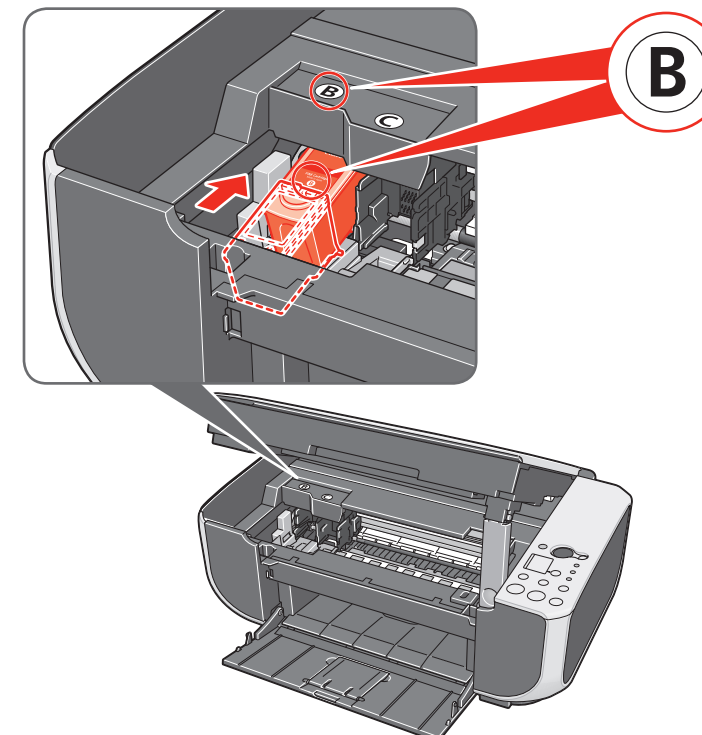
### 2 Remove the protective tape gently.



**Important**  
• Do not touch the electrical contacts or Print Head Nozzles on a FINE Cartridge. The machine may not print out properly if you touch it.  
• Do not drop or shake FINE Cartridges as this may cause the ink to leak out and stain your clothes and hands.  
• Do not reattach the protective tape once you have removed it.  
• Be careful not to stain your hands or surrounding work area with ink on the removed protective tape.

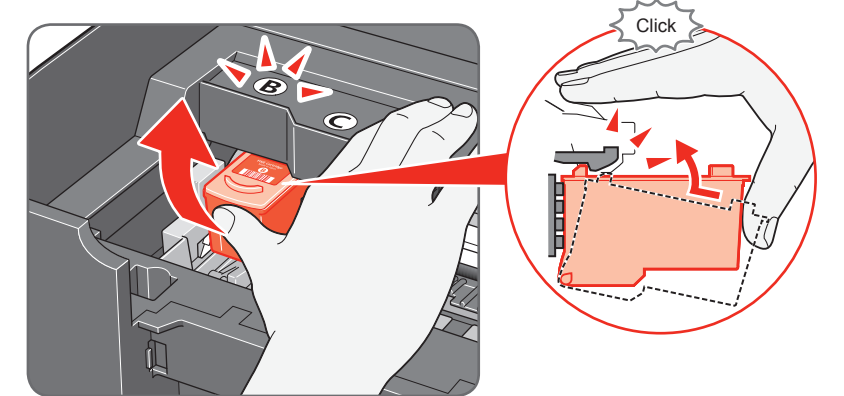
### 3 Insert the Black FINE Cartridge slightly slanted into the left slot B.

**Important**  
• Make sure the machine is turned on and the Power lamp lights green.  
• Make sure the FINE Cartridge Holder has moved to the left.

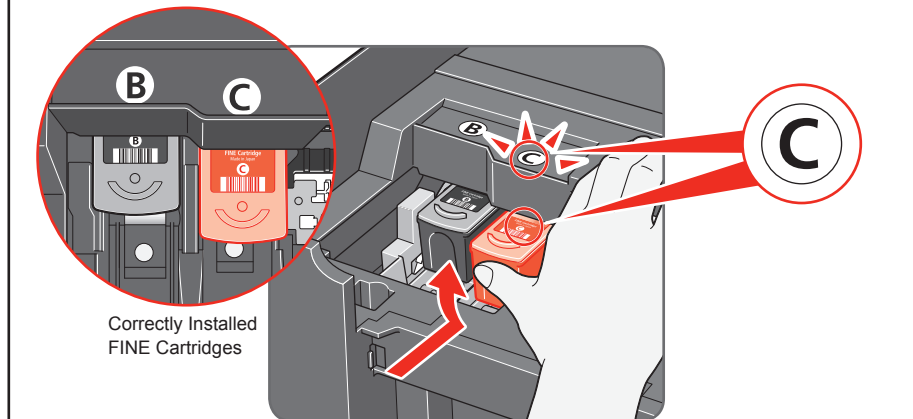


### 4 Push up the FINE Cartridge until it clicks into place.

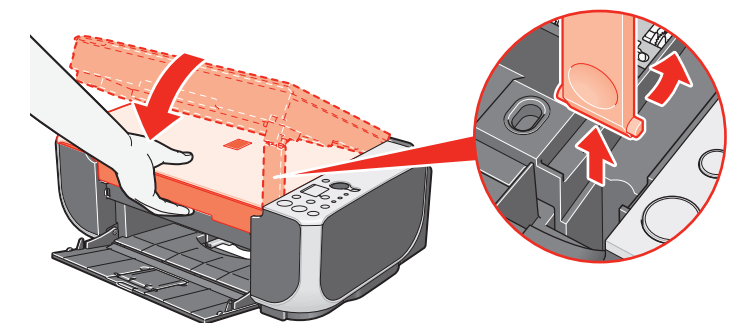
**Important**  
• For correct machine operation, make sure the FINE Cartridge is securely inserted.  
• If the Scanning Unit (Cover) is left open for more than 10 minutes, the FINE Cartridge Holder moves to the right side. Close and reopen the Scanning Unit (Cover) to return the holder to the left.



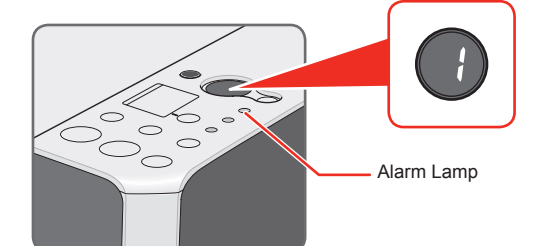
### 5 Repeat the procedure for the Color FINE Cartridge, inserting it into the right slot C.



### 6 Lift the Scanning Unit (Cover) slightly to set the Scanning Unit Support back to its original position, and then gently close the Scanning Unit (Cover).



**Important**  
Once you have installed the FINE Cartridges, the LED will flash green. Wait until the LED stops flashing and displays 1. It takes about one to two minutes.



**Note**  
If the Alarm lamp lights and an error code is displayed on the LED, refer to "An Error Code Is Displayed on the LED" in "Troubleshooting" of the Quick Start Guide.

Hardware setup is complete.





### Note

- The screens below refer to Windows Vista operating system Ultimate Edition (hereafter referred to as "Windows Vista") installation. Screens may vary depending on the operating system you are using.
- Log into a user account with the administrator privilege.
- Do not switch users during the installation process.
- Quit all running applications before installation.
- A message asking for your confirmation to restart your computer may appear during the installation process. If this message is displayed, follow the on-screen instructions and click **OK**.
- The installation resumes from where it left off when your computer has been restarted. While restarting, do not remove the *Setup CD-ROM*.

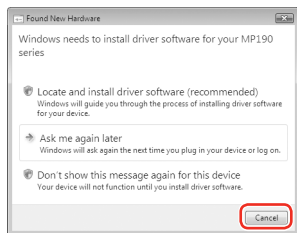
### 1 Be sure to **TURN THE MACHINE OFF** before continuing.

- Press the **ON** button.
- Make sure that the **Power** lamp stops flashing.

### 2 Turn the computer on and start Windows®.

#### Important

If the **Found New Hardware** or **Found New Hardware Wizard** screen appears automatically, remove the USB cable connected to your computer. Click **Cancel** to quit the screen. In Windows Vista, the screen may close automatically when the USB cable is unplugged. Then turn off the machine and proceed from step 3 to install the software.



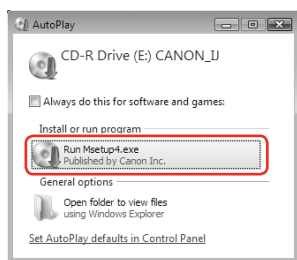
### 3 Insert the *Setup CD-ROM*. The setup program should run automatically.

In Windows Vista, go to Step 4. In Windows XP and Windows 2000, go to Step 6.

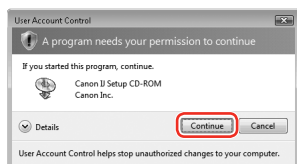
#### Note

If installation does not start automatically, double-click the CD-ROM icon or **MSETUP4.EXE** contained on the *Setup CD-ROM*.

### 4 If the **AutoPlay** screen appears, click **Run Msetup4.exe**.



### 5 If the **User Account Control** screen appears, click **Continue**. If the same screen reappears in subsequent steps, click **Continue**.



### 6 When the main menu appears, click **Easy Install**.

The MP Drivers, On-screen Manuals, and application software are installed automatically.



#### Note

If you want to select particular items to install, click **Custom Install** and follow the on-screen instructions to proceed the installation.

### 7 When the list of applications to install appears, confirm the contents, click **Install**.

#### Note

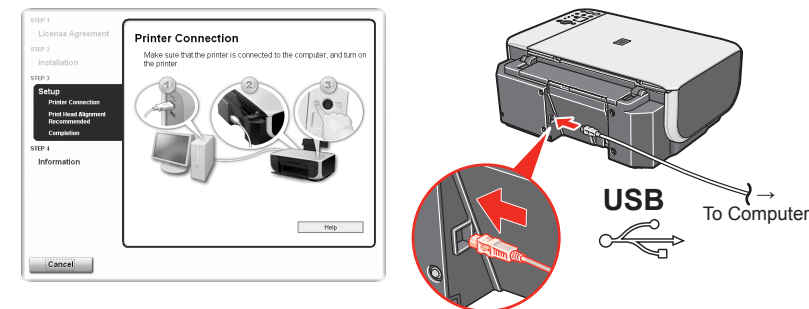
Move the cursor over items to display explanations of each application.

### 8 When the License Agreement is displayed, read it carefully and click **Yes**. Two License Agreement screens may appear. The software installation starts.

### 9 When the **Printer Connection** screen appears, connect one end of the USB cable to the computer, the other to the machine, then **TURN THE MACHINE ON**. The MP Drivers will begin identifying the printer port being used.

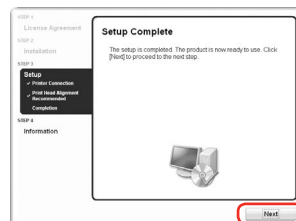
#### Important

If you cannot go to the next procedure after three minutes, refer to "Troubleshooting" instructions in the *Quick Start Guide*.



### 10 When the **Print Head Alignment Recommended** screen appears, click **Next**.

### 11 When the **Setup Complete** screen appears, click **Next**.

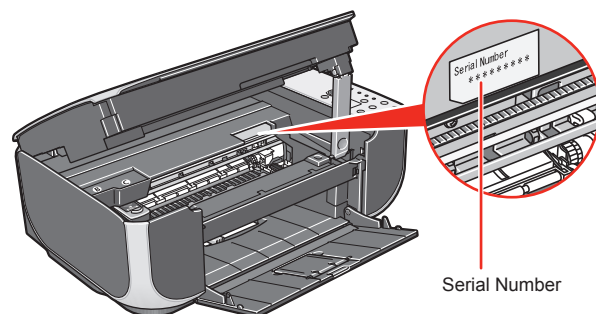


### 12 When the **User Registration** screen appears, click **Next**.

#### Note

To register later, click **Cancel** and go to Step 13. After software installation is complete, double-click on the desktop.

Follow on-screen instructions to register your product. You will need your product serial number, which is located on the inside of the machine.



### 13 When the **Extended Survey Program** screen appears, confirm the message. We would appreciate it if you would take part in this program regarding the use of Canon printers. If you can agree, click **Agree**. If **Do not agree** is clicked, the **Extended Survey Program** will not be installed but you can use the machine normally.

### 14 When the **Installation completed successfully** screen appears, click **Exit**. Remove the *Setup CD-ROM* after clicking **Exit**.

If **Restart** is displayed, make sure that the **Restart the system now (recommended)** check box is selected, then click **Restart**.

Remove the *Setup CD-ROM* after restarting the computer.

#### Note

Keep the *Setup CD-ROM* in a safe place in case you need to reinstall the software.

**Software installation is now complete.**

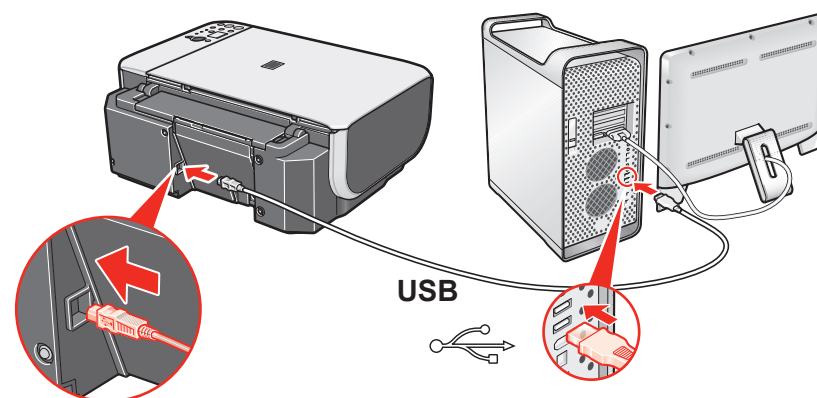
### Note

- Since Mac® OS 9, Mac OS X Classic environments, or Mac OS X v.10.3.8 or earlier are not supported, do not connect the machine to these. Use Mac OS X v.10.3.9 or later.
- The screens below refer to Mac OS X v.10.4.x installation. Screens may vary depending on the operating system you are using.
- Log on as an Administrator.
- Quit all running applications before installation.

### 1 Connect one end of the USB cable to the computer and the other to the machine.

#### Note

Make sure the machine is turned on.



### 2 Turn on your Mac and insert the *Setup CD-ROM*.

#### Note

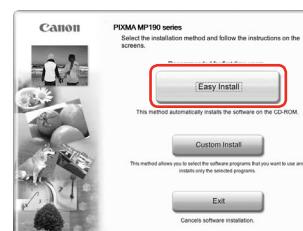
If the CD-ROM folder does not open automatically, double-click the CD-ROM icon on the desktop.

### 3 Double-click the **Setup** icon.

### 4 When the **Authenticate** screen appears, enter your administrator name and password. Click **OK**. If you do not know your administrator name or password, click , then follow the on-screen instructions.

### 5 When the main menu appears, click **Easy Install**.

The MP Drivers, On-screen Manuals, and application software are installed automatically.



#### Note

If you want to select particular items to install, click **Custom Install** and follow the on-screen instructions to proceed the installation.

### 6 When the list of applications to install appears, confirm the contents, then click **Install**.

#### Note

Move the cursor over items to display explanations of each application.

### 7 Read the License Agreement carefully and click **Yes**.

The software installation starts.

### 8 When the **Print Head Alignment Recommended** screen appears, click **Next**.

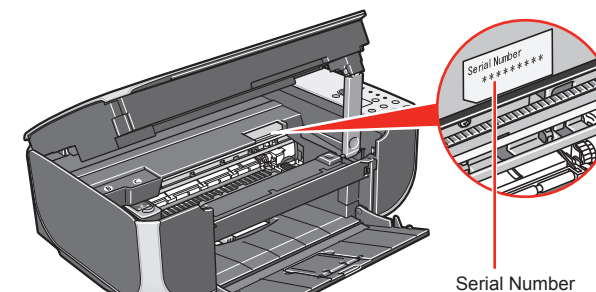
### 9 When the **Setup Complete** screen appears, click **Next**.

### 10 When the **User Registration** screen appears, click **Next**.

#### Note

To register later, click **Cancel** and go to Step 11. After software installation is complete, double-click on the desktop.

Follow on-screen instructions to register your product. You will need your product serial number, which is located on the inside of the machine.



### 11 When the **Installation completed successfully** screen appears, click **Restart**.

Remove the *Setup CD-ROM* after restarting the computer.



The system is restarted automatically.

#### Note

Keep the *Setup CD-ROM* in a safe place in case you need to reinstall the software.

#### When using Mac OS X v.10.3.9:

Restarting the computer while connected to the machine may cause the machine not to be detected. To resolve this, either unplug the USB cable then plug it back in again, or turn the machine off then back on again.

#### Note

When using Mac OS X v.10.3.9, before using the Operation Panel on the machine to save originals scanned from the Platen Glass to the computer, it is necessary to select MP Navigator EX as the launch application on **Image Capture** under **Applications**. For details, refer to "Scanning Images" in the *User's Guide* on-screen manual.

**Software installation is now complete.**