

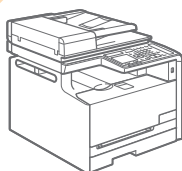


# Color imageCLASS

## MF8280Cw

## Getting Started

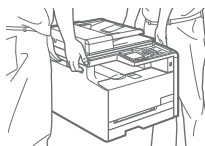
1



Preface

➔ P. 2

2



Installing the Machine

➔ P. 4

3



Connecting to a Computer  
and Installing the Drivers

➔ P. 12

4



Configuring and  
Connecting the Fax

➔ P. 24

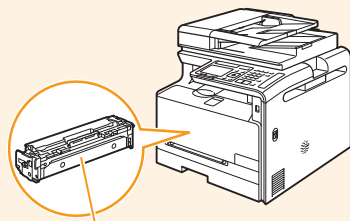
### Read this guide first.

Please read this guide before operating this product. The remarks for important safety instructions are described in the Basic Operation Guide. After you finish reading this guide, store it in a safe place for future reference.

# Checking the Supplied Accessories

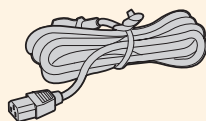
Confirm that all the supplied accessories are contained in the box. If an item is missing or damaged, please contact the Canon Authorized Service Facilities or the Canon Customer Care Center.

## Machine Unit



The toner cartridge is already installed.

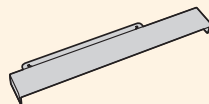
## Power Cord



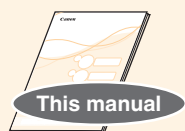
## Telephone Cable



## Legal dust cover



## Getting Started



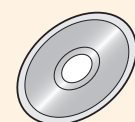
## Wireless LAN Setting Guide



## Basic Operation Guide



## User Software CD-ROM



## Shortcut key label



## Limited Warranty Notice



## Registration Card



### User Software CD-ROM

The User Software CD-ROM contains the MF Drivers, MF Toolbox, various software, and e-Manual<sup>\*1</sup>.

Depending on the operating system you are using, some functions of the driver software included in the CD-ROM may not be usable. The newest software is posted on the Canon web site. Please verify the operating environment etc. and download the appropriate software if required.

#### MF Drivers

The MF Driver contains the Network Scan Utility<sup>\*2</sup> (to use to scan over a network) as well as printer, fax, and scanner drivers.

#### MF Toolbox

The MF Toolbox provides a group of commands for you, such as to open a scanned image in an application, send it as an e-mail attachment file, and store it on the hard disk.

### Miscellaneous Software

The User Software CD-ROM contains Presto! PageManager. Install it from the [Custom Installation] option.

<sup>\*1</sup> See "Using the e-Manual" (P. 33).

<sup>\*2</sup> Windows XP/Vista/7/8 only.

### About the LAN and USB cables

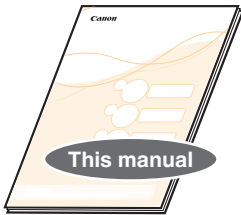
The machine does not come with a LAN cable, USB cable, or a hub. Have cables or a hub ready as necessary.

- Make sure that the USB cable you use has the following mark.
- Please use LAN Cable of Category 5 twisted pair cable or higher for support.
- When connecting the machine to a 100BASE-TX Ethernet network, all the devices on the LAN must be compatible with 100BASE-TX.



## Included Documents

### Printed Manuals



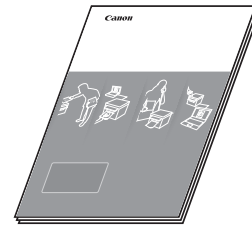
#### Getting Started

This manual describes the configuration and software installation.



#### Wireless LAN Setting Guide

This manual explains the wireless LAN setup procedures and troubleshooting during the setup.



#### Basic Operation Guide

This manual describes the basic use of the machine.

### Manuals Included in the CD-ROM

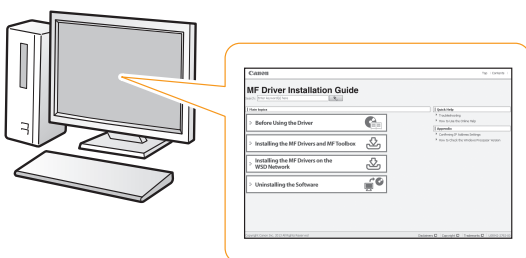


#### e-Manual

This manual explains all the features of the machine, and is categorized by subject. For details about using the e-Manual, see "Using the e-Manual" (P. 33).

#### Displaying the e-Manual from the CD-ROM

- For Windows  
Insert the User Software CD-ROM in your computer, click [Manuals], and then click [e-Manual].  
If the User Software CD-ROM has been already inserted in your computer and [Manuals] is not displayed, remove the CD-ROM and insert it again.
- For Macintosh  
After installing e-Manual using the User Software CD-ROM, double-click [index.html] in the saved [MF Guide] folder.

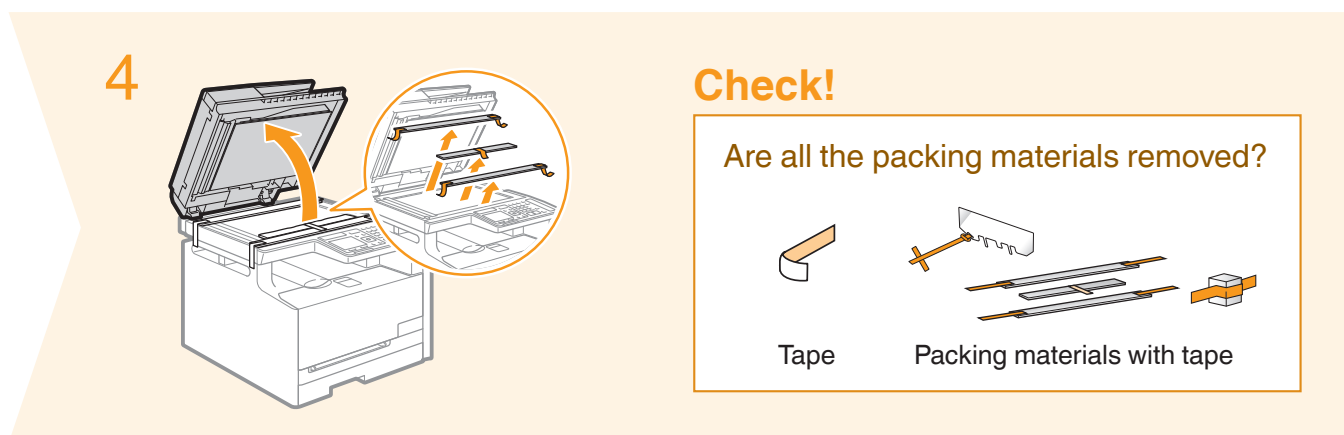
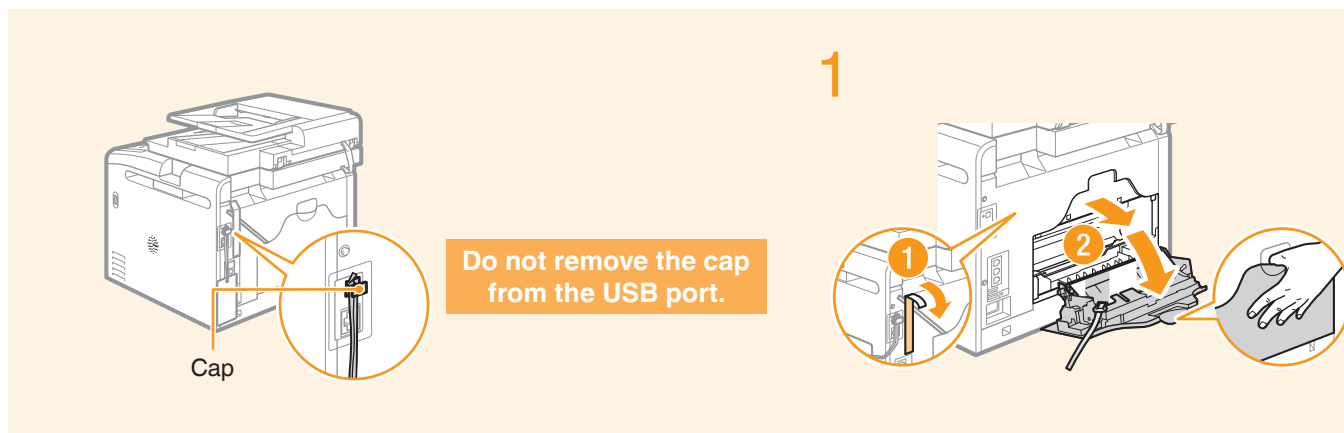


#### MF Driver Installation Guide

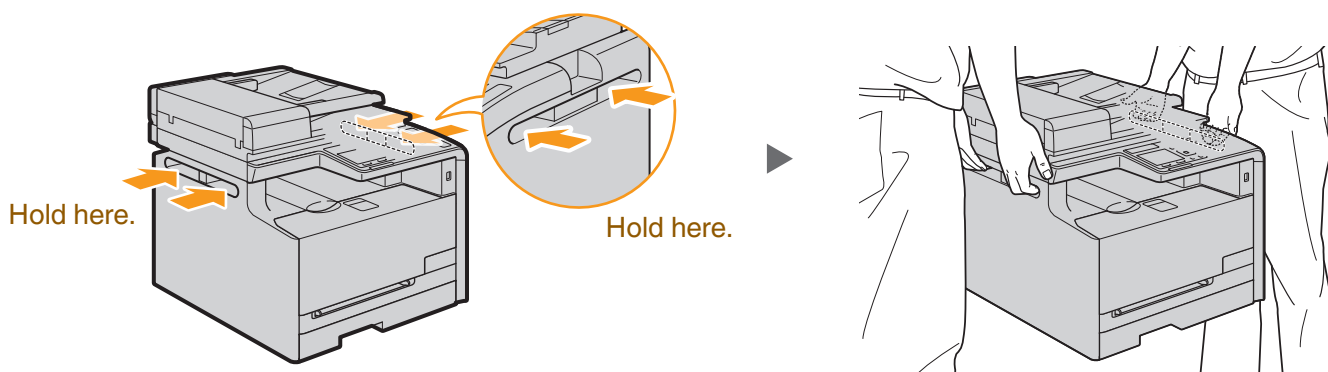
This manual describes how to install the MF Drivers, MF Toolbox, and software included on the User Software CD-ROM.

# Removing the Packing Materials

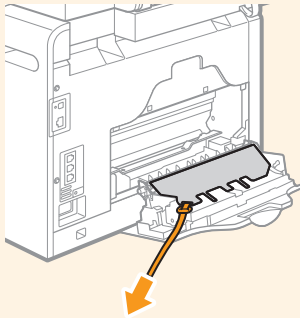
Remove all the packing materials, such as orange tape. Packing materials may change in form or placement, or may be added or removed without prior notice.



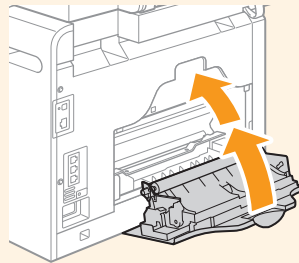
## Proper Handling



2



3



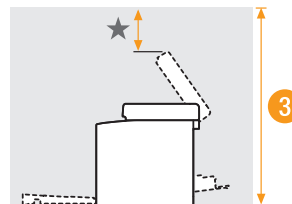
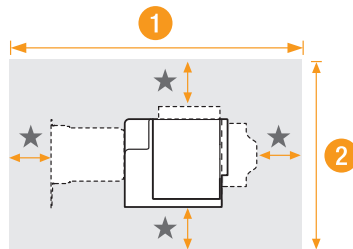
## Establishing an Installation Site

★ = 4" (100 mm)

1 48 3/8" (1,229 mm)

2 26 1/2" (674 mm)

3 31 1/2" (801 mm)



### Do not place the machine near the following:

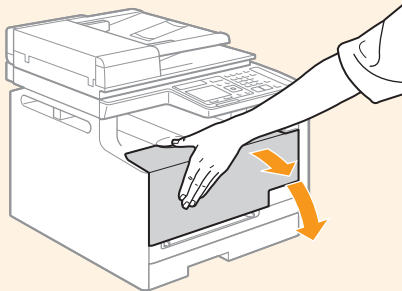
- Alcohol, paint thinner, or other flammable substances ► If flammable substances come into contact with electrical parts inside the machine, this may result in a fire or electrical shock.
- Any medical equipment ► Radio wave emitted from this machine may interfere with medical equipment.
- Surfaces that are unstable, subject to excessive vibration, objects that could block the ventilation slot, dampness or dust, in direct sunlight or exposed to the elements, subject to high temperatures, open flames, and poor ventilation ► Installing the machine in locations with these characteristics may result in personal injury, fire, or electric shock.

### Ozone from the Unit

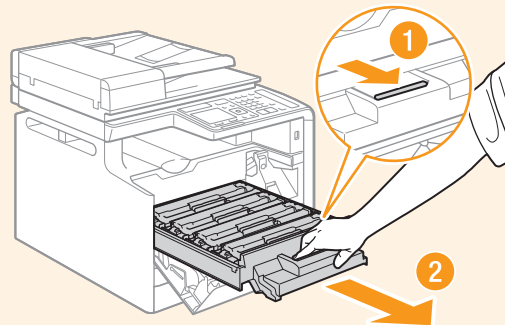
Although ozone is generated from the machine during operation, it does not have any affect on the human body. However, if you intend to use the machine for long periods of time, ensure that the installation location is well ventilated for a comfortable working environment.

# Preparing the Toner Cartridge

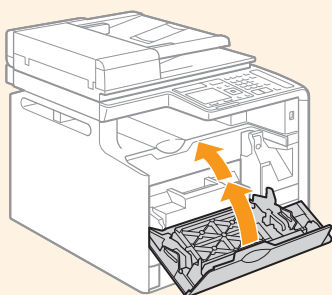
1



2

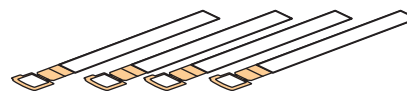


5



## Check!

Are all the packing materials removed?

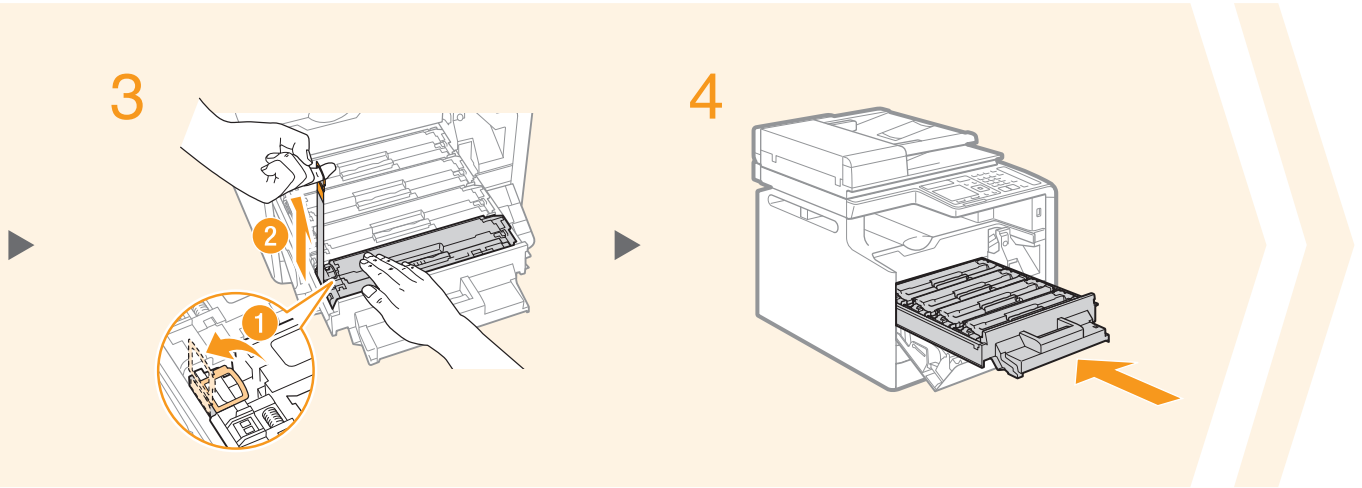


Sealing Tape

## Supplied Toner Cartridges

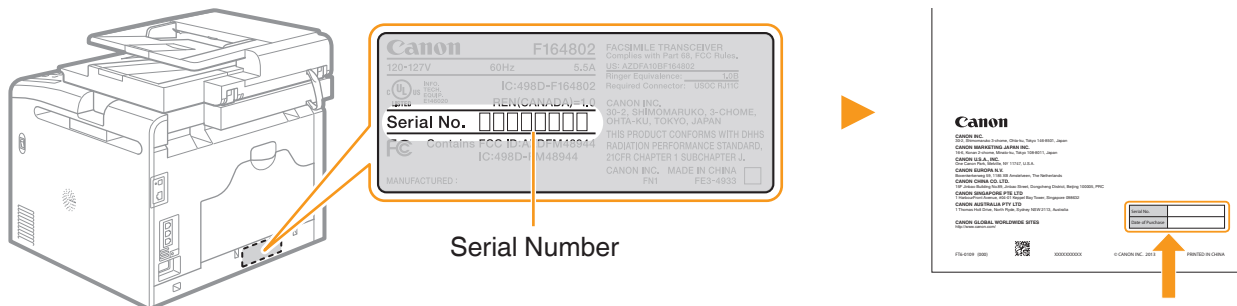
- The average yield is 800 sheets for the included K (Black) toner cartridge, and the composite yield is 800 sheets for the included C (Cyan), M (Magenta), and Y (Yellow) toner cartridges.\* The average yield of replacement toner cartridges differ from the supplied toner cartridges.
- To purchase replacement toner cartridges:
  - ➔ “About Replacement Toner Cartridges” in the e-Manual

\* The average yield is based on “ISO/IEC 19798” when printing A4 size paper with the default printing density.



## Serial Number of the Machine

Write down the serial number and purchase date on the back cover of the Basic Operation Guide enclosed in the package. You need this information when contacting your local authorized Canon dealer or Canon Customer Care Center.

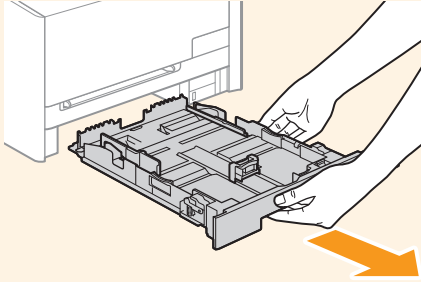


The serial number is indicated on the rating label located on the back side of the machine (a character string of 3 letters and a 5-digit number).

Write down the information here (on the back cover of the Basic Operation Guide).

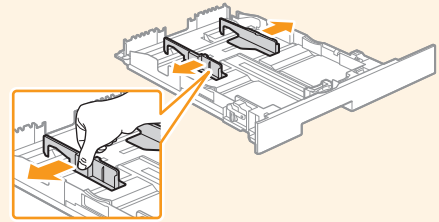
# Loading Paper

1



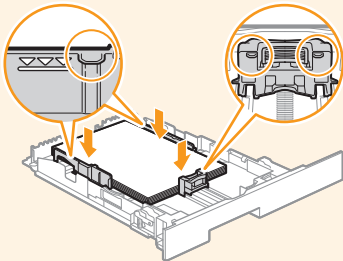
2

Press the lock release lever and spread the side paper guides a little wider than the width of the paper.



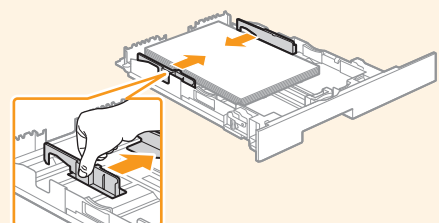
5

Set the paper under the hooks. Make sure that the paper stack does not exceed the load limit mark.



6

Slide the side paper guides inward until they are aligned securely against the edges of the paper.

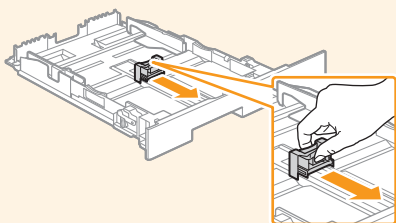


## Loading Paper Other than Letter Size

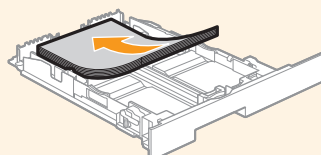
The procedure here is for loading Letter size paper. To load paper other than Letter size, such as Legal or Statement, see "Loading Paper Other than Letter Size" (P. 28) after finishing the initial settings.



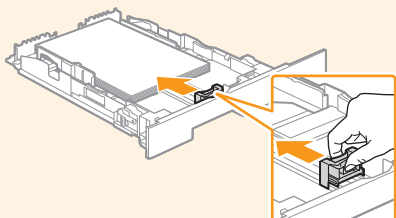
- 3 Press the lock release lever and spread the front-center paper guide a little wider than the length of the paper.



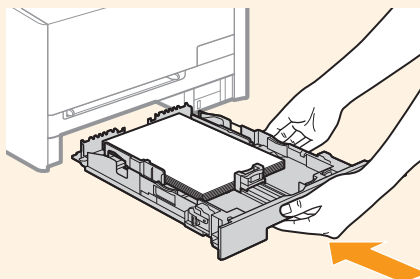
- 4 Load paper so that its edge is aligned with the rear side of the paper drawer.



- 7 Press the lock release lever, and slide the front-center paper guide inward until it is aligned securely against the edges of the paper.

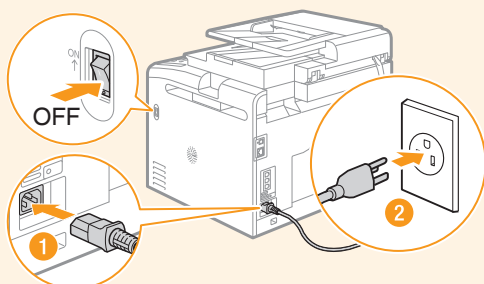


8



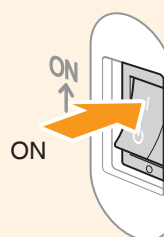
# Connecting the Power Cord

- 1 Make sure that the machine is turned OFF, and then connect the power cord.

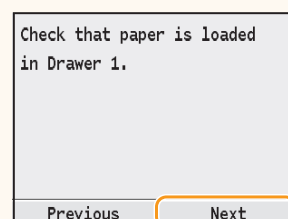
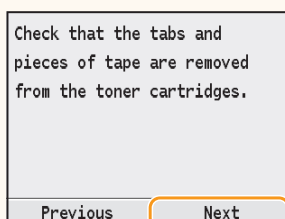
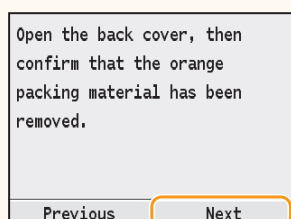


**Do not connect the USB cable.**  
Connect the cable when installing the software.

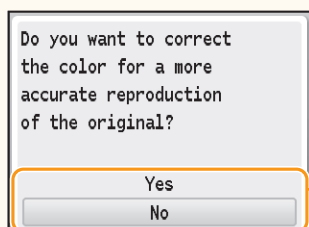
- 2 Turn ON the machine.



- 5 Press <Next>.



- 8 Select whether or not to perform color correction.  
It is recommended to perform color correction to obtain optimum copy or printout results.

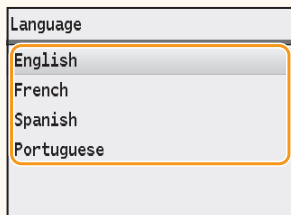


☐ Yes **Perform color correction.**

 "Performing Color Correction" (P. 30)

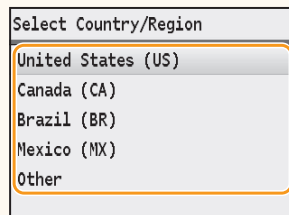
☐ No **Proceed to the next step.**

- 3 Press [▲] or [▼] to highlight a language, and then press [OK].

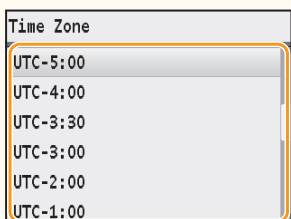


OK

- 4 Press [▲] or [▼] to highlight a region, and then press [OK].

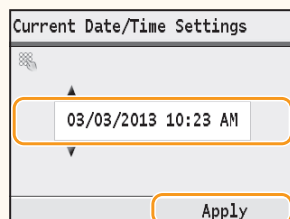


- 6 Press [▲] or [▼] to highlight your time zone\*, and then press [OK].



OK

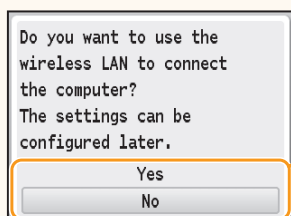
- 7 Enter the date and time, and then press <Apply>.



- Press [◀] or [▶] to move the cursor to the left and right.
- Press [▲] or [▼] to change the numeric value, or AM/PM.

The factory default settings for time display is set as 12-Hour.

- 9 Select whether or not to connect using wireless LAN immediately.



Yes

**Connect to the computer via a wireless LAN immediately.**

- ➔ Start from step ④ on P. 4 in Wireless LAN Setting Guide.

No

**Proceed to the next page.**

- Select <No> if you want to connect the machine to a computer via a wireless LAN later. When connecting, refer to Wireless LAN Setting Guide.
- If you do not connect the machine to a computer, proceed to fax configuration (P. 24).

\* The time zone setting indicates the time difference between your local time zone and Coordinated Universal Time (UTC). The correct time zone setting is required for Internet communications.

# Connecting to the Computer

## **Check!** Choosing the Method to Connect the Machine to the Computer

First, you need to decide on the method you would like to connect your machine to the computer. Choose from the following three options.



### Connecting via a Wired LAN

You can connect the machine to the computer through a wired router. Use the LAN cables to connect the machine to the wired router.

- Make sure that there is an available port in the router to connect the machine and the computer.
- Have a LAN Cable of Category 5 twisted-pair cable or higher ready.



**Windows**

➔ P. 13

**Macintosh**

➔ P. 15



### Connecting via a USB

You can connect the machine to the computer using a USB cable.



**Windows**

➔ P. 19

**Macintosh**

➔ P. 21

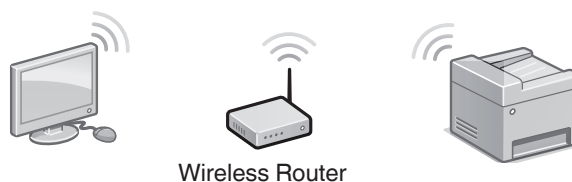


### Connecting via a Wireless LAN

➔ See "Wireless LAN Setting Guide"

You can connect the machine to the computer through a wireless router\*. Since it is connected wireless, no LAN cables are needed.

\* A wireless router which supports IEEE 802.11b/g/n is required.



#### NOTE

You can find a video and written guides which will ensure a smooth setup of the machine into your existing wireless environment at: [www.usa.canon.com/WirelessHelp](http://www.usa.canon.com/WirelessHelp).

If you are not sure whether your router is wired or wireless:

See the instruction manual provided with your network device, or contact the manufacturer.

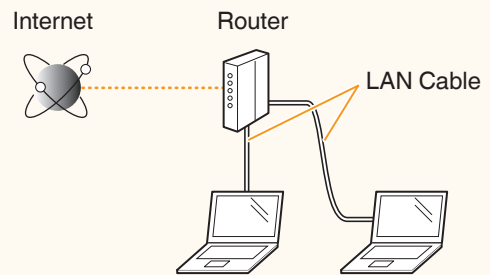
## 1

## Wired LAN Connection

## Check the following first. Windows



- 1 Are the computer and the router properly connected using a LAN cable?  
For details, see the instruction manual provided with your network device, or contact the manufacturer.
- 2 Has the network settings on the computer been complete?  
If the computer is not properly configured, you may not use the wired LAN connection even after completing the following settings.



## NOTE

- You cannot connect both the wired LAN and wireless LAN at the same time.
- When you connect to a network environment that is not security protected, your personal information could be disclosed to third parties. Please use caution.
- If you connect through a LAN in the office, contact your network administrator.

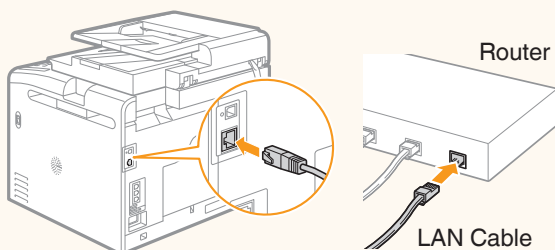
## 2

## Wired LAN Connection

## Connect the LAN cable. Windows



The machine does not come with a LAN cable, router, or a hub. Have LAN Cable of Category 5 twisted pair cable or higher ready.



If the IP address on this machine has been changed:

If the machine is on the same subnet as the computer, the connection is maintained.

\* If you want to manually configure the IP address:

If you have set a static IP address to the IP address of the computer, manually configure a static IP Address.

- ➔ "Setting IPv4 Address" in the e-Manual
- ➔ "Setting IPv6 Address" in the e-Manual

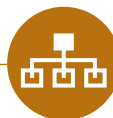
**Wait for approximately 2 minutes.**  
The IP address will be automatically configured.\*

# Connecting to the Computer

## 3

### Wired LAN Connection

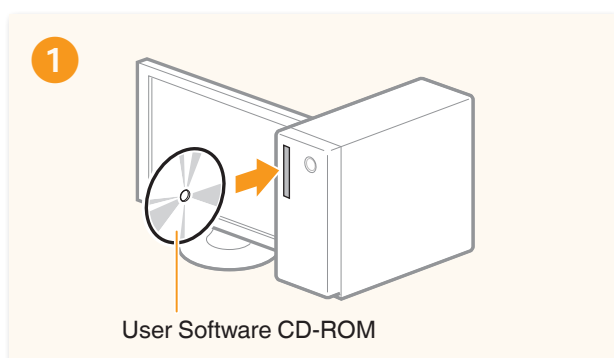
### Install the software. Windows



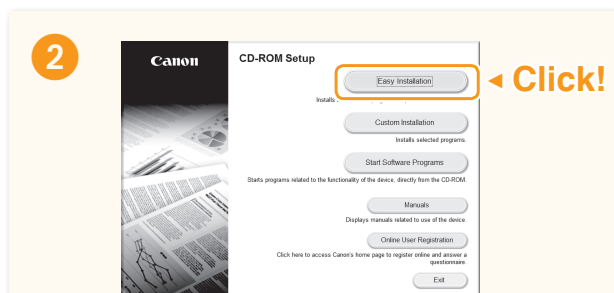
Install the MF Drivers and the MF Toolbox. Make sure that the machine is turned ON, and log on to Windows as a user with administrative privileges. Shut down all applications that are running. See MF Driver Installation Guide for details about installation.

#### NOTE

- If you are operating in the IPv6 environment, you may not install the software following the procedures below. See “Installing the MF Drivers on the WSD Network” in MF Driver Installation Guide.
- You may not use the scan function in the IPv6 environment.



User Software CD-ROM



- Printer, fax, scanner drivers and MF Toolbox will be installed.
- Select [Custom Installation] to install Presto! PageManager and the e-Manual.

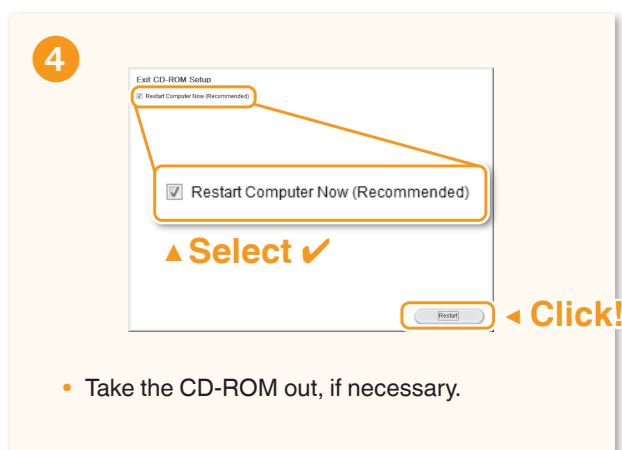
#### If the screen is not correctly displayed:

- Windows XP/Server 2003  
[Start] Menu → [Run] → enter [D:\MInst.exe]\* → [OK]
- Windows Vista/7/Server 2008  
[Start] Menu → [Search programs and files] (or [Start Search]) → enter [D:\MInst.exe]\* → press the [Enter] key
- Windows 8/Server 2012  
Right-click the lower-left corner of the screen → select [Run] → enter [D:\MInst.exe]\* → [OK]

\* The CD-ROM drive name is indicated as "D:" in this manual.



Follow the instructions on the screen to continue.



- Take the CD-ROM out, if necessary.

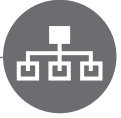
Computer connection via the wired LAN is now complete.

➡ Proceed to P. 24 to configure the fax.

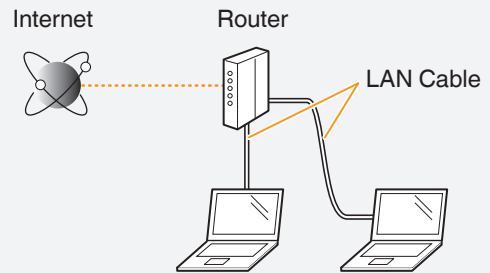
## 1

## Wired LAN Connection

## Check the following first. Macintosh



- 1 Are the computer and the router properly connected using a LAN cable?  
For details, see the instruction manual provided with your network device, or contact the manufacturer.
- 2 Has the network settings on the computer been complete?  
If the computer is not properly configured, you may not use the wired LAN connection even after completing the following settings.



## NOTE

- You cannot connect both the wired LAN and wireless LAN at the same time.
- When you connect to a network environment that is not security protected, your personal information could be disclosed to third parties. Please use caution.
- If you connect through a LAN in the office, contact your network administrator.

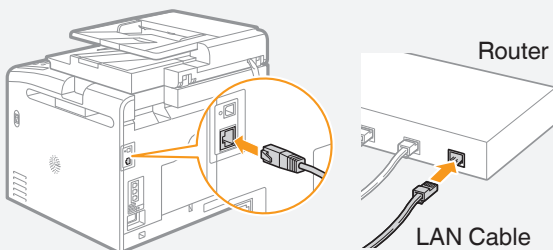
## 2

## Wired LAN Connection

## Connect the LAN cable. Macintosh



The machine does not come with a LAN cable, router, or a hub. Have LAN Cable of Category 5 twisted pair cable or higher ready.



**Wait for approximately 2 minutes.**  
The IP address will be automatically configured.\*

**If the IP address on this machine has been changed:**

If the machine is on the same subnet as the computer, the connection is maintained.

**\* If you want to manually configure the IP address:**

If you have set a static IP address to the IP address of the computer, manually configure a static IP Address.

- ➔ "Setting IPv4 Address" in the e-Manual
- ➔ "Setting IPv6 Address" in the e-Manual

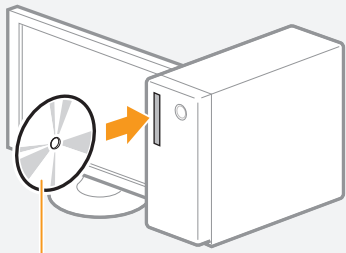
# Connecting to the Computer

## 3 Wired LAN Connection Install the software. Macintosh

Install the MF Drivers for Macintosh. It requires Mac OS X 10.5.8 version or later. The installation screen varies depending on the version of Mac OS X.

This operation is for Macintosh. If using Windows, see P. 14.

1



Insert the User Software CD-ROM and double-click the CD-ROM icon.


2



Double-click!

Follow the instructions on the screen to continue.

3




Enter

Click!

- Depending on the system environment, the dialog box may not be displayed. In this case, proceed to next step.

4



Click!

- Installing the drivers is now complete. Continued with registration operations on the desktop.

5

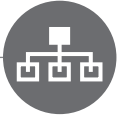


Click!

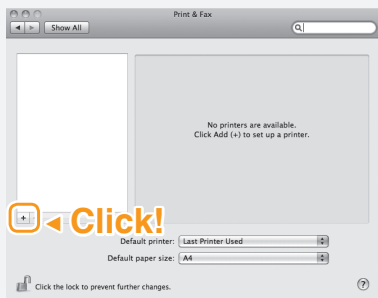


Click!





6



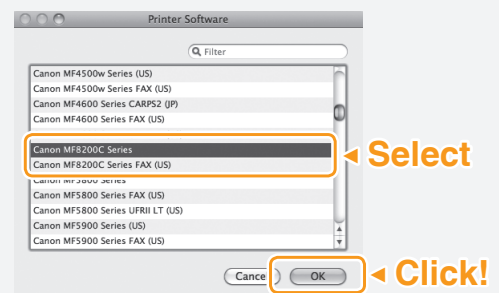
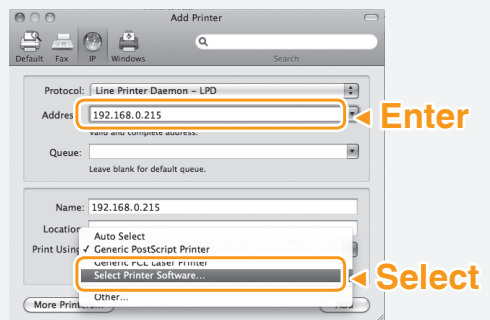
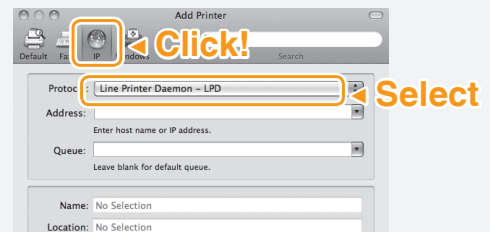
- If you are using Mac OS X 10.5.8, click [+], select [Canon MF8200] from the dialog box displayed, and then proceed to next step.

7



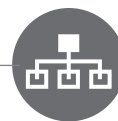
- 2 Select a printer name for which [Bonjour] is displayed in the [Kind] or [Connection] column.
  - 3 If you are using Mac OS X 10.5.x, select the corresponding driver from [Print Using].
- An IP address is automatically configured by the Bonjour function. If there is not the Bonjour function or you want to set the IP address manually, see "Setting IPv4 Address" or "Setting IPv6 Address" in the e-Manual.

### Connecting with the manual setting

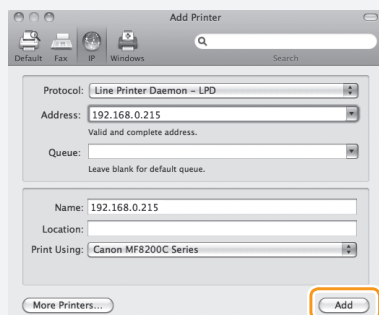


➔ Proceed to P. 18

# Connecting to the Computer



## Macintosh



Click!

- If you are using Mac OS X 10.5.x, select [Select a driver to use] and the corresponding driver from [Print Using], and then click [Add].



Computer connection via the wired LAN is now complete.



Proceed to P. 24  
to configure the fax.

## 1

## USB Connection

## Install the Software. Windows



Install the MF Drivers and the MF Toolbox. Make sure that the machine is turned ON, and log on to Windows as a user with administrative privileges. Shut down all applications that are running. See MF Driver Installation Guide for details about installation.

Do not connect the USB cable yet.

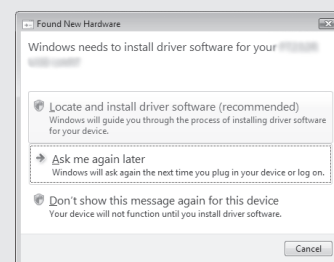
Connect the USB cable after installing the MF Drivers and the MF Toolbox.

If you already connected the USB cable:

Windows 7/8: ① Disconnect the USB cable from the computer, ② and then proceed to step ①.

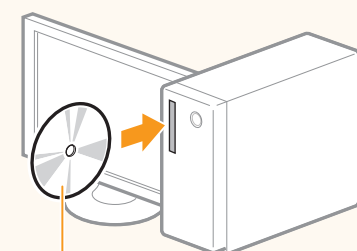
Windows XP/Vista: ① If the dialog box on the right appears, disconnect the USB cable from the computer\*, ② click [Cancel], ③ and then proceed to step ①.

\* If the USB cable is disconnected and the dialog box disappears, proceed to step ①.



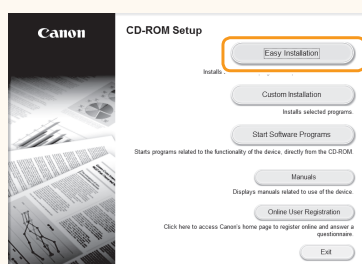
For Windows XP/Vista

1



User Software CD-ROM

2



- Printer, fax, scanner drivers and MF Toolbox will be installed.
- Select [Custom Installation] to install Presto! PageManager and the e-Manual.

If the screen is not correctly displayed:

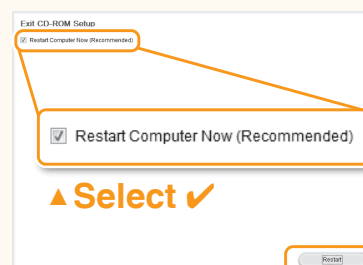
- Windows XP  
[Start] Menu → [Run] → enter [D:\MInst.exe]\* → [OK]

- Windows Vista/7  
[Start] Menu → [Search programs and files] (or [Start Search]) → enter [D:\MInst.exe]\* → press the [Enter] key
- Windows 8  
Right-click the lower-left corner of the screen → select [Run] → enter [D:\MInst.exe]\* → [OK]

\* The CD-ROM drive name is indicated as "D:" in this manual.

Follow the instructions on the screen to continue.

3



- Remove the CD-ROM, if necessary.

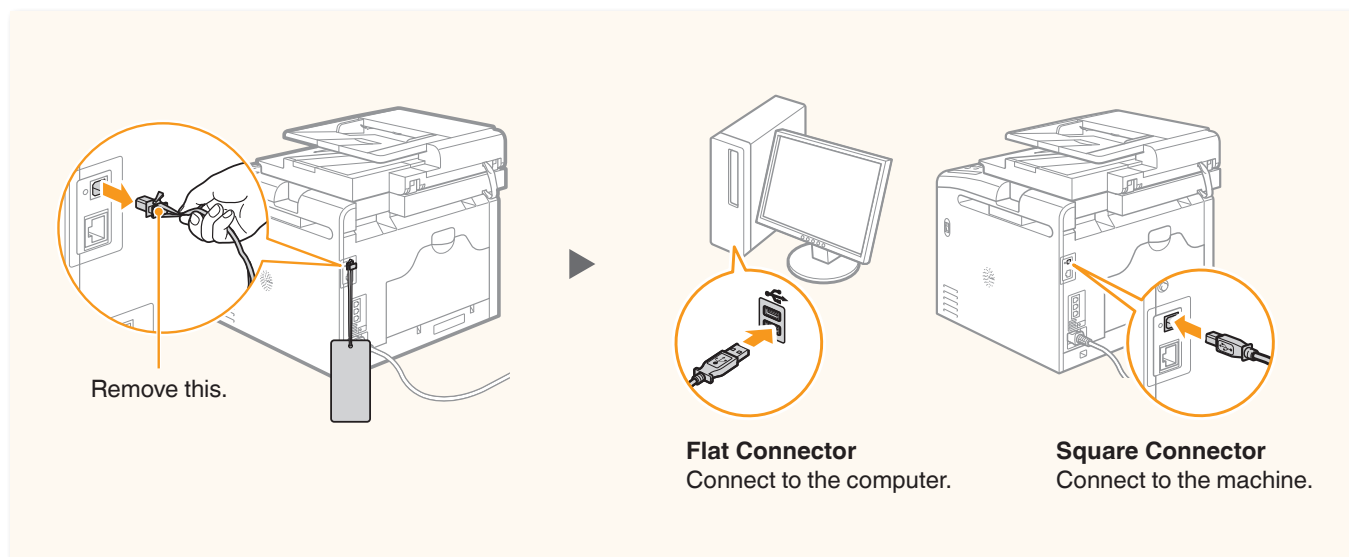
➡ Proceed to P. 20

## Connecting to the Computer

### 2 USB Connection Connect the USB cable. Windows



After installing the software, such as MF Driver, connect the USB cable. Make sure the software is installed first.



Computer connection via the USB is now complete.

➡ Proceed to P. 24 to configure the fax.

## 1

## USB Connection

## Install the software. Macintosh



Install the MF Drivers for Macintosh. It requires Mac OS X 10.5.8 version or later. The installation screen varies depending on the version of Mac OS X.

This operation is for Macintosh. If using Windows, see P. 19

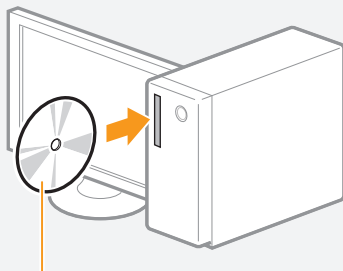
Do not connect the USB cable yet.

Connect the USB cable after installing the MF Drivers and the MF Toolbox.

If you already connected the USB cable:

① Disconnect the USB cable from the computer, ② and then proceed to step ①.

1



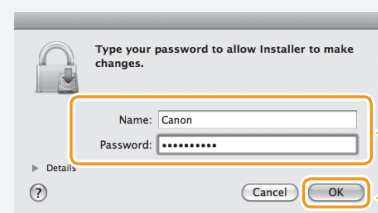
Insert the User Software CD-ROM and double-click the CD-ROM icon.

2



Follow the instructions on the screen to continue.

3



- Depending on the system environment, the dialog box may not be displayed. In this case, proceed to next step.

4



- Installing the drivers is now complete. Continued with registration operations on the desktop.

## Connecting to the Computer

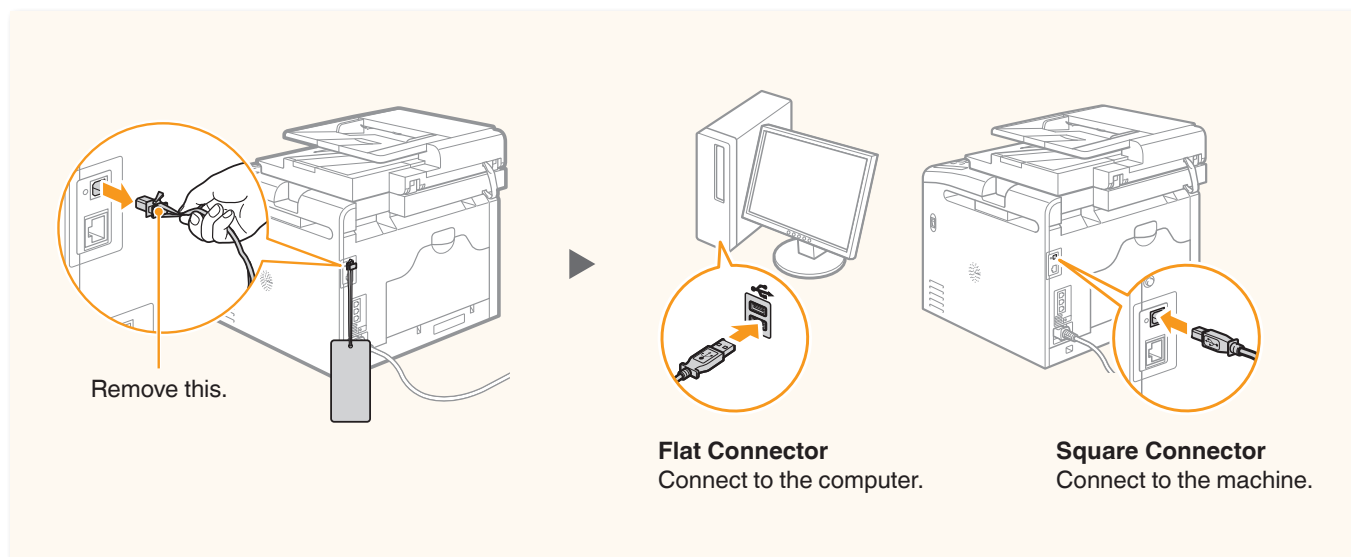
# 2

USB Connection

**Connect the USB cable.** Macintosh



After installing the software, such as MF Driver, connect the USB cable. Make sure the software is installed first.



Computer connection via the USB is now complete.



Proceed to P. 24 to configure the fax.



# Configuring the Fax

## Check! Selecting a Receive Mode That Fits Your Purpose

Choose your purpose to know the **receive mode**\* to use. **Remember** the receive mode to configure the setting in “Selecting the Fax Receive Mode” (P. 26).

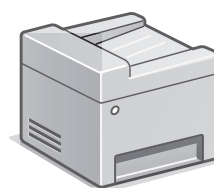
\* If you have subscribed to a Distinctive Ring Pattern Detection (DRPD) service provided by your telephone company, <DRPD> is also available for the receiving mode. See the e-Manual for details about other receive mode.

Fax

### Use for Fax Only/No Voice Calls

You can use only for fax and may not use for voice calls. You do not need to connect the external telephone.

**Receive Mode** ⇒ Auto

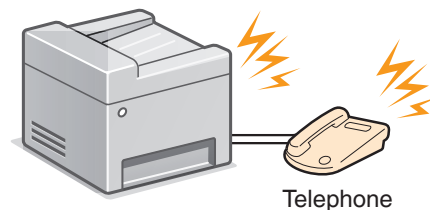


Phone

### Mainly Use for Voice Calls/Almost Not Use for Fax

Connect an external phone to receive calls. Press the start button to receive faxes.

**Receive Mode** ⇒ Manual



Telephone

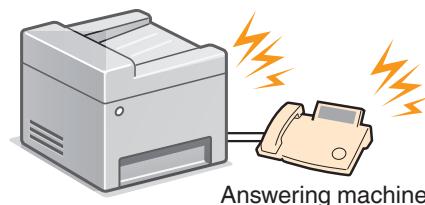
Phone Fax

### Use for Fax and Voice Call

#### ① Using an answering machine

Connect an external answering machine to record voice messages when you are out, as well as receive calls. Faxes will be automatically received.

**Receive Mode** ⇒ Answering Machine

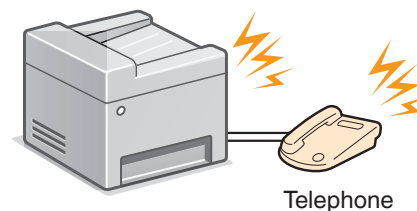


Answering machine

#### ② Using a General Telephone

Connect the external telephone. Faxes will be automatically received and the machine will ring when voice calls come in.

**Receive Mode** ⇒ Fax/Tel Auto Switch



Telephone



## Set Up 1 Registering the Fax Number and Unit Name



When do you want to perform fax setup?

Set Up Now

Set Up Later

- If you select <Set Up Later>, the receive mode will be set to <Auto>.
- To reconfigure the settings, press → <Fax Settings> → <Fax Setup Guide>.

OK

Register the unit telephone number for this device.

Next

Register Unit Telephone Number

+1234567

Apply

- Enter the fax number using the numeric keys, and then press <Apply>.

Register the unit name.  
(Sender name, company name,  
etc.)

Next

Register Unit Name

CANON

A/a/12

Apply

- Enter the unit name, and then press <Apply>.

➡ “Entering Text” (P. 35)

➡ Proceed to the next page

Registered information will be printed on the recipient's paper.

The fax number and unit name registered here will be printed on the recipient's paper as the sender information.

Number's Type		Fax Number		Unit Name	Page Number
Sent Time					
03/03/2013 02:07 PM	FAX	123XXXXXXX	CANON		0001/0001

# Configuring the Fax

## Set Up 2 Selecting the Fax Receive Mode

Set the receive mode that you confirmed in “Selecting a **Receive Mode** That Fits Your Purpose” (P. 24).

Set the RX mode.  
Answer the following questions  
to select the appropriate RX  
mode.

Next

Do you want to use this device  
for fax only (no telephone)?

Yes  
No

- To set to **Auto** mode → **<Yes>** → [OK]
- To set to other receive modes → **<No>** → [OK]

No

Do you want to receive faxes  
automatically but answer the  
telephone manually?

Yes  
No

- To set to **Fax/Tel Auto Switch** mode → **<Yes>** → [OK]
- To set to other receive modes → **<No>** → [OK]

No

Do you want to use an  
answering machine to  
answer the telephone?

Yes  
No

- To set to **Answering Machine** mode → **<Yes>** → [OK]
- To set to **Manual** mode → **<No>** → [OK]

<Auto>

Yes

<Fax/Tel>

Yes

<Answer>

Yes

<Manual>

No

RX Mode Settings

RX Mode: XXXX **< Check! >**

Reset Apply

Connect Telephone Line

Refer to the illustration on  
the next screen to connect  
the line to A.

Next

The screen that appears varies  
depending on the receive mode  
selected.

Connect to socket on back side.

A

Next

The screen that appears varies  
depending on the receive mode  
selected.

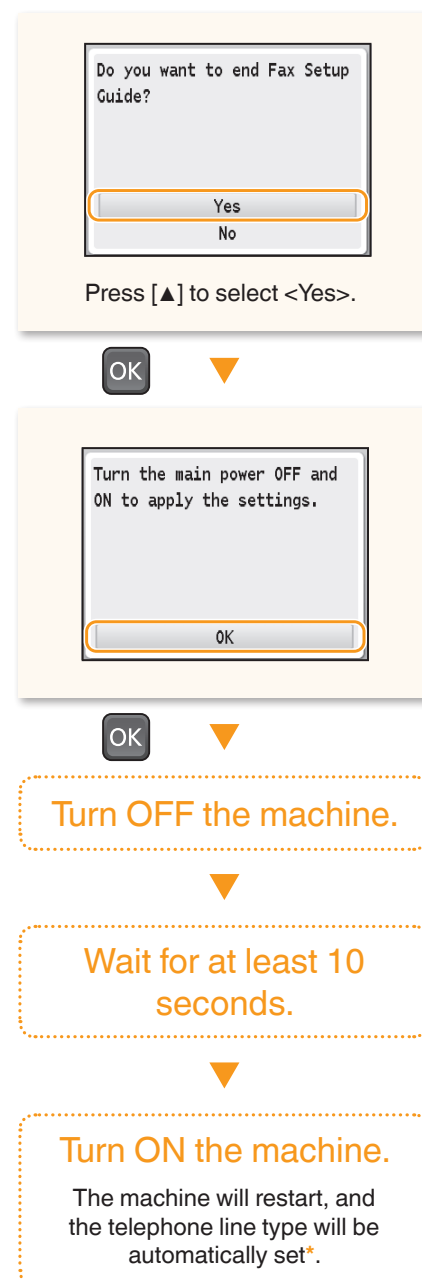
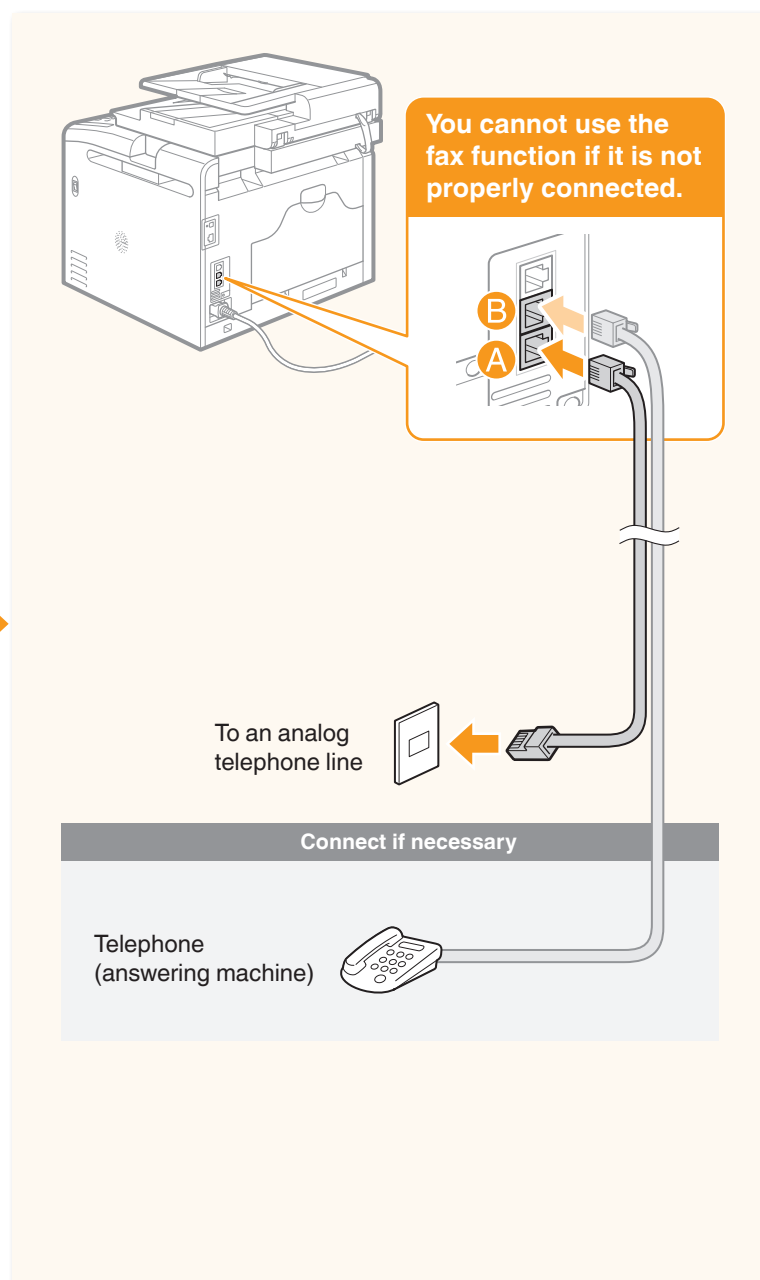
**When connecting a telephone with fax  
functions:**

Set the fax receive mode of the telephone to  
“manual.”

**Other receiving mode:**

If you have subscribed to a Distinctive Ring  
Pattern Detection (DRPD) service provided  
by your telephone company, <DRPD> is also  
available for the receiving mode. See the  
e-Manual for details about other receive mode.

### Set Up 3 Connecting the Telephone Line



\* If the telephone line type is not automatically set:

See the Basic Operation Guide to set manually.

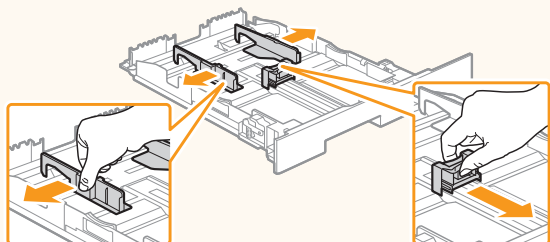
➡ "Fax" → "Change the Fax Settings" → "Changing Fax Sending Settings" in the Basic Operation Guide

# Appendix

## Loading Paper Other than Letter Size

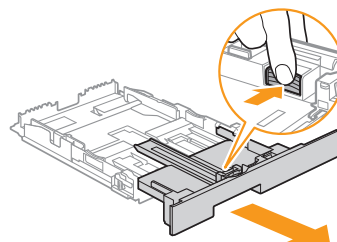
To load paper other than Letter size, such as Legal or Statement, see “Loading Paper” (P. 8) and the following procedure to load paper and specify the paper size and type.

1



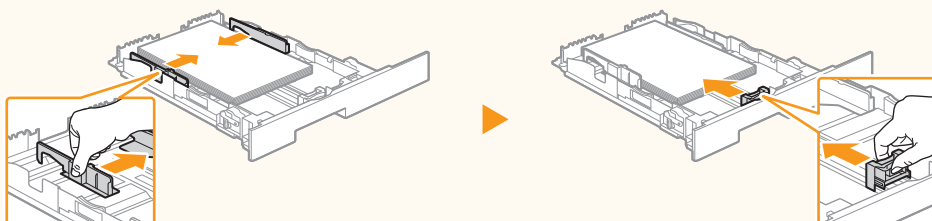
- Pull out the paper drawer.
- Slide the paper guides, and spread them a little wider than the actual paper width.

When loading Legal size paper



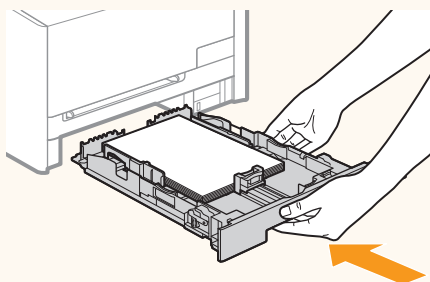
Press the lock release lever and adjust the length of the paper drawer.

2



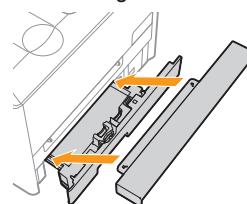
- After loading paper, slide the side paper guides and the front-center paper guide inward until they are aligned securely against the edges of the paper.
- Make sure that the paper stack does not exceed load limit mark.

3

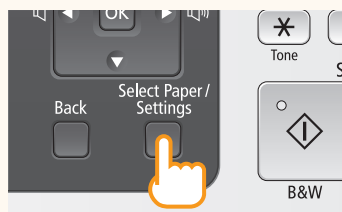


When loading Legal size paper

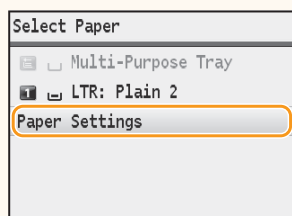
Set the Legal dust cover on the paper drawer.



4



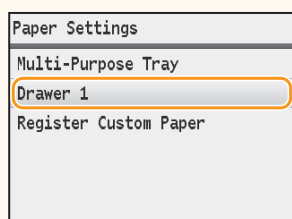
5



- Press [▲] or [▼] to highlight <Paper Settings>, and then press [OK].



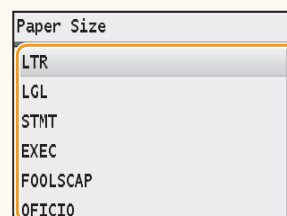
6



- Press [▲] or [▼] to highlight the paper drawer for which you want to set the paper size and type, and then press [OK].



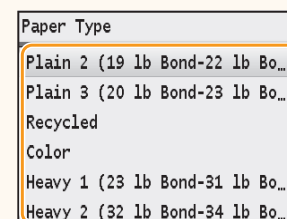
7



- Press [▲] or [▼] to highlight a paper size, and then press [OK].



8



- Press [▲] or [▼] to highlight a paper type, and then press [OK].

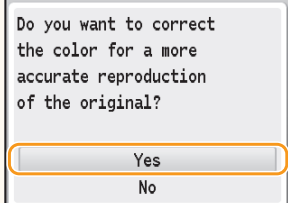
### Loading Envelopes or Paper with a Letterhead

- ➔ "Loading Envelopes or Paper with a Letterhead" in the Basic Operation Guide

## Performing Color Correction

It is recommended to perform color correction to obtain optimum copy or printout results.

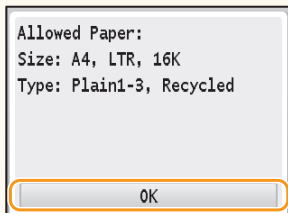
1



- When the above screen is displayed during initial settings, select [Yes] to perform color correction.



2



- Make sure that paper is loaded, and then press [OK].



3



- Confirm the procedure for color correction, and then press [OK].
- An adjustment image is printed.



4



Place Image 1 on the glass with the black side toward the back.



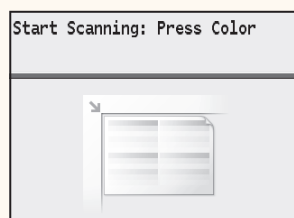
5



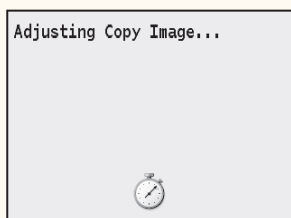
- Open the feeder, place the test chart on the platen glass with the print side face down, and then close the feeder.
- Place the paper so that the black stripe is at the back side of the machine.



6




7



- When [Finished] is displayed, remove the adjustment image placed on the platen glass in Step 5.

#### If <Correction failed.> appears:

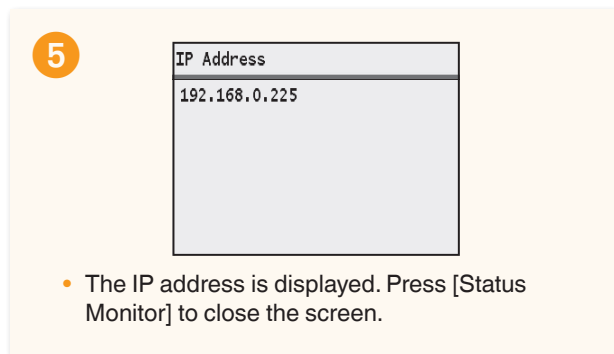
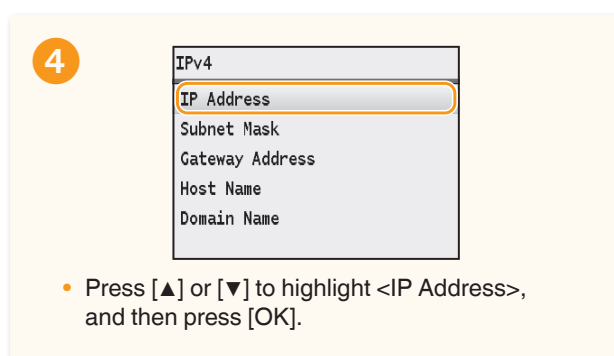
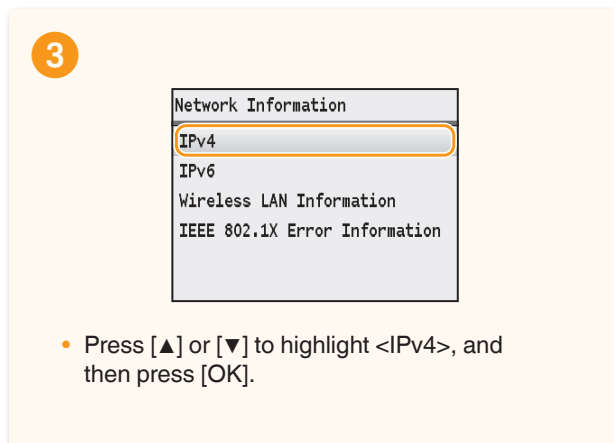
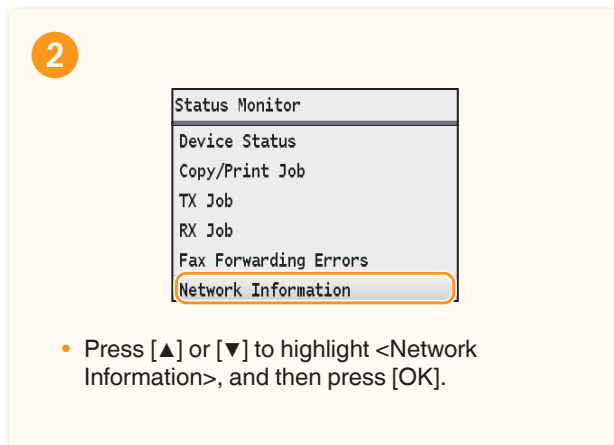
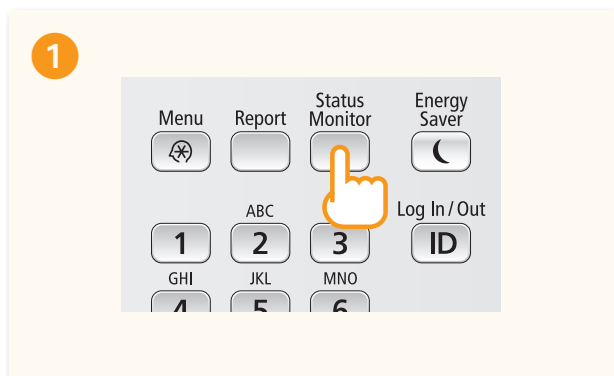
- Is the paper loaded correctly?  
→ Load plain or recycled paper of A4/Letter size in the paper drawer.
- Is the adjustment image placed on the platen glass correctly?  
→ Place the adjustment image with the print side face down and the black stripe toward the back of the machine.
- Has a paper jam occurred?  
→ Remove the jammed paper.

If you want to perform color correction again, press , and then select the following settings in the following order.

<Adjustment/Maintenance> → <Auto Adjust Gradation>  
→ <Adjust Copy Image>

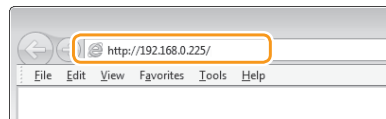
## Checking the IP Address

You can check the IP address of the machine. Use it when you need to enter the IP address during the configuration or registration.

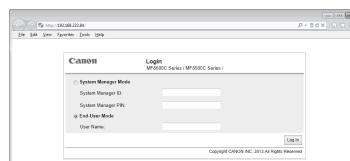


### Check if the Machine Is Connected to the Network Correctly

Start a Web of the computer that is connected to the network, enter [[http://IP address of the machine](http://192.168.0.225/)], and then press [ENTER]. (Example: <http://192.168.0.225/>)



The screen below (Remote UI) should be displayed.\*



\* If the remote UI screen is not displayed, see the e-Manual.



## Using the e-Manual

The e-Manual is an electronic manual document that is displayed on the computer. All features of the machine are categorized by subject, and you can quickly view the information you need by using its search function. Use the e-Manual as a reference.

The screenshot shows the Canon Color ImageCLASS e-Manual web interface. The interface includes a top navigation bar with links for 'Top', 'Site Map', 'Help', and 'Print'. A left sidebar contains a 'Contents' menu with categories such as 'Important Safety Instructions', 'Setting Up the Machine', 'Basic Operations', 'Copying', 'Faxing', 'Using the Machine as a Printer', 'Using the Machine as a Scanner', 'Network', 'Security', 'Using Remote UI', 'Setting Menu List', 'Troubleshooting', 'Maintenance', 'Specifications', and 'Others'. The main content area features a large banner titled 'Easy on the environment, easy on your wallet' with a subtext about saving resources. Below the banner is a 'Quick Help' section listing common problems and their solutions, accompanied by icons for a wrench and a question mark. At the bottom right, there is a button labeled 'For Macintosh Users'. Annotations with orange lines point to various elements: 'Click to refer to the contents and instructions for using the e-Manual.' points to the 'Top' link; 'Click to display practical uses of the machine.' points to the banner; 'Click a topic to access information.' points to the 'Contents' menu; 'Click when performing troubleshooting or maintenance of the machine.' points to the 'Quick Help' section; and 'Click to view precautions when using Macintosh.' points to the 'For Macintosh Users' button.

## Using the Online Help

Information, such as driver software information, is included in the online help. When using the driver software, you can immediately view the description of the features and the contents of the settings.

### Windows

- 1 Select [File] → [Print] from the menu bar of an application.
- 2 Select the printer in [Select Printer] or [Name] in the [Print] dialog box.
- 3 Click [Preferences] or [Properties].
- 4 Click [Help].

### Macintosh

- 1 Select [File] → [Print] from the menu bar in the application.
- 2 Select the printer in [Printer].
- 3 Change the content displayed in lower pane of the dialog to [Finishing], [Quality], [Special Features], etc.
- 4 Click [ ? ].

---

### **Disclaimers**

The information in this document is subject to change without notice. CANON INC. MAKES NO WARRANTY OF ANY KIND WITH REGARD TO THIS MATERIAL, EITHER EXPRESS OR IMPLIED, EXCEPT AS PROVIDED HEREIN, INCLUDING WITHOUT LIMITATION, THEREOF, WARRANTIES AS TO MARKETABILITY, MERCHANTABILITY, FITNESS FOR A PARTICULAR PURPOSE OF USE OR NON-INFRINGEMENT. CANON INC. SHALL NOT BE LIABLE FOR ANY DIRECT, INCIDENTAL, OR CONSEQUENTIAL DAMAGES OF ANY NATURE, OR LOSSES OR EXPENSES RESULTING FROM THE USE OF THIS MATERIAL.

### **Trademarks**

Canon, the Canon logo, and Color imageCLASS are registered trademarks of Canon Inc. in the United States and may also be trademarks or registered trademarks in other countries.

Bonjour, Macintosh, Mac OS, and OS X are trademarks or registered trademarks of Apple Inc. in the U.S. and/or other countries.

Microsoft, Windows, Windows Vista and Windows Server are either registered trademarks or trademarks of Microsoft Corporation in the United States and/or other countries.

All other product and brand names are registered trademarks, trademarks or service marks of their respective owners.

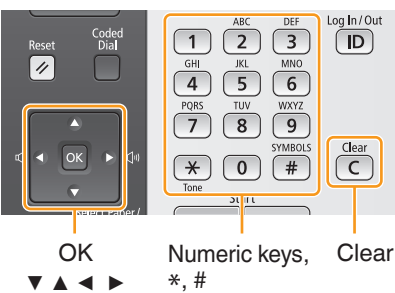
### **Copyright**

© CANON INC. 2013 All Rights Reserved

No part of this publication may be reproduced, transmitted, transcribed, stored in a retrieval system, or translated into any language or computer language in any form or by any means, electronic, mechanical, magnetic, optical, chemical, manual, or otherwise, without the prior written permission of Canon Inc.

# Entering Text

During the setup or initial configuration, you may need to enter letters and numbers. Use [▲], [▼], [◀], [▶], numeric keys, [\*], [#], and [OK] to enter text.



Numeric Key	Entry Mode (See below on how to change the Entry mode)		
	<A>	<a>	<12>
1	@.-_ /		1
2	ABC	abc	2
3	DEF	def	3
4	GHI	ghi	4
5	JKL	jkl	5
6	MNO	mno	6
7	PQRS	pqrs	7
8	TUV	tuv	8
9	WXYZ	wxyz	9
0	(Not available)		0
#	(space) @ . / - _ ! ? & \$ % # ( ) [ ] { } < > * + = " , ; : ' ^ `   \ ~	(Not available)	

## Changing the Entry Mode

The machine supports three entry modes: <A> for uppercase, <a> for lowercase, and <12> for numbers. The default setting is <A>. Press <A/a/12> or [\*] to change the entry mode.

## Moving the Cursor

Press [◀] or [▶] to move the cursor.

## Entering a Space

Move the cursor to the end of the text, and then press [▶].

## Deleting Characters

Press [C] to delete characters.  
Press and hold [C] to delete all characters.

## Contacting the Service Center

---

When you have a problem with your machine, refer to "Troubleshooting" in the Basic Operation Guide or the e-Manual first. If you cannot solve the problem after referring the manuals, contact the Canon Authorized Service Facilities or the Canon Customer Care Center.

Canon Customer Care Center

# 1-800-OK-CANON

(U.S.A./Canada)

### U.S.A.

Monday through Friday

From 8:00 A.M. to 8:00 P.M. EST

### Canada

Monday through Friday

From 9:00 A.M. to 8:00 P.M. EST

<http://www.canon.ca/>

# Canon

---

### CANON INC.

30-2, Shimomaruko 3-chome, Ohta-ku, Tokyo 146-8501, Japan

### CANON MARKETING JAPAN INC.

16-6, Konan 2-chome, Minato-ku, Tokyo 108-8011, Japan

### CANON U.S.A., INC.

One Canon Park, Melville, NY 11747, U.S.A.

### CANON EUROPA N.V.

Bovenkerkerweg 59, 1185 XB Amstelveen, The Netherlands

### CANON CHINA CO. LTD.

15F Jinbao Building No.89, Jinbao Street, Dongcheng District, Beijing 100005, PRC

### CANON SINGAPORE PTE LTD

1 HarbourFront Avenue, #04-01 Keppel Bay Tower, Singapore 098632

### CANON AUSTRALIA PTY LTD

1 Thomas Holt Drive, North Ryde, Sydney NSW 2113, Australia

### CANON GLOBAL WORLDWIDE SITES

<http://www.canon.com/>

