

This guide describes the basic operation of RM Viewer. For a more detailed description of the operation, see the "Administrator Manual" on the supplied CD-ROM.

Starting/Exiting the Viewer

- 1 Double-click the [RM Viewer] icon on the desktop.
× The RM-Lite icon has a different appearance.

- 2 Enter the [Host Name], [User Name] and [Password] and click [Connect].
The Viewer starts.
Record the user name and password here:

The Viewer starts.

Record the user name and password here:

User name	
Password	

- 3 Select [File] > [Exit].
The Viewer exits.



If you record your user name and password here, be sure to handle this document carefully, so as not to reveal them to an unauthorized person.

Note

Searching

Searching for a Camera and Viewing Video

Search for a camera to view using various search criteria.

- 1 Click the search button (🔍) on the Camera Selector and select the type of search criteria.

- 2 Type the search criteria to search for the camera.

- 3 Double-click a camera in the search results list to open a video window for the camera.

Selecting an Event and Viewing the Video

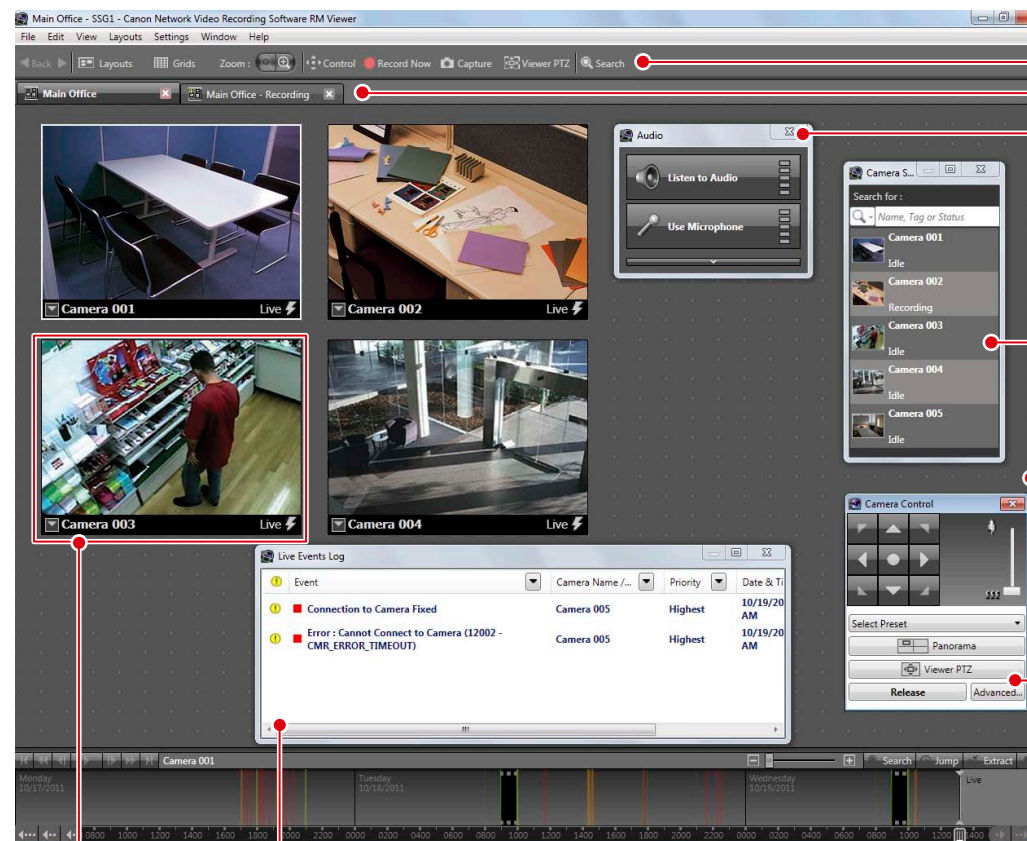
You can search for events and play back video from an event in the search results.

- 1 Click [Search] on the Toolbar to display the [Event Search] dialog box.

- 2 Specify the search criteria and click [Search] to start searching.

- 3 Select the event you want to view and click [Play Back Video].

Viewer Features



Toolbar

The toolbar has buttons for accessing commonly used functions.

Tabs

Tabs allow different layouts to be open at the same time for quick access. (RM-Lite does not support the tabs function.)

Audio Panel

Lets you send/receive live audio for a camera or play back recorded audio.

Camera Selector

Displays a list of cameras. Select the camera you want to view from the list. [Search for:] searches for cameras in the list that meet the search criteria, such as the camera name or tag.

Viewing Area

Place and arrange video windows in this area.

Camera Control

Controls the settings on the camera. See "Controlling a Camera" on the other side of this guide.

Timeline

Displays recording information and past events.

Playhead

Points to the time code being played. Drag the playhead to change the time code of the video in the video window.

Live Events Log

Displays events that occurred within the last hour when the log is first opened after starting the Viewer.

Video Window

Displays a live or a recorded video from a camera.

Toolbar buttons



[Back]

Click ◀ to return to the previously displayed layout. Click ▶ to display the next layout.

[Layouts]

Selects and switches to a different video window layout.

[Grids]

Displays a grid in the background of the viewing area.

[Zoom]

Zooms in and out of the viewing area.

[Control]

Displays the Camera Control dialog box, used for controlling a camera.

[Record Now]

Starts recording video.

[Capture]

Captures a still frame of the displayed video. The still frame can be saved.

[Viewer PTZ]

You can zoom a region of the camera video in the video window using Viewer PTZ (pan/tilt/zoom).

[Search]

Searches for events. Video can be played back from an event in the search results.

Controlling a Camera

1 Click the video window of the camera you want to control.

2 Click [Control] on the toolbar to display the [Camera Control] dialog box.

Pan (Right/Left) / Tilt (Up/Down)
Use the arrow buttons to pan or tilt a camera that has the pan/tilt feature.

Zoom
Drag the slider to change the zoom.

Select Preset
Select from a list of camera angles that you preset on the camera.

Advanced
Adjust the camera image quality using the exposure or smart shade control.

Control/Release
All buttons on the [Camera Control] dialog box become active.

Control the Camera Directly Using the Live Video

Center the video at a point by clicking the [+] cursor there



Zoom the video in/out with the slider

Click to display a menu.

- To change the size of the video window, change [Video Display Size].
- To make dark areas of the video lighter, adjust the level of [Viewer Shade Control].



Note

- The [Cannot get camera control] message is displayed when another Viewer with higher camera control privileges is controlling the camera. Please contact your administrator.
- Depending on the type of camera, some functions might not be available. For details, see the "Administrator Manual".
- Ask your administrator in advance about how to operate a camera while it is recording.

Playing Back Recordings

Playback Using the Timeline

1 Click the video window of the camera you want to use for playback.

2 Drag to move the time display on the timeline.

Scroll Backwards
Back 1 Day
Back 1 Week

Scroll Forwards
Forward 1 Day
Forward 1 Week

Drag this area to the left or right to change the time display

3 Click the time or event that you want to play back.
Playback starts in the video window.

Events for the selected camera
Recorded video
Events for non-selected cameras

Playback from a Specified Time

1 Click the video window of the camera you want to use for playback.

2 Click [Jump] to display the [Jump to Time] dialog box.

3 Select a date and time, and click [OK].
Playback starts in the video window.



Hint

- Use "Playback Using the Timeline" to start playback at any point, such as at events. Use "Playback from a Specified Time" to start playback at a specific time.
- You can play back video from multiple cameras simultaneously, or play back video recorded at different times with the same camera.

Controlling/Saving the Playback Video

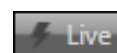
Controlling the Playback Video

Fast Reverse Play/Pause Fast Forward

Previous Event Previous Frame Next Frame Next Event

Fast reverse (each click changes the speed in sequence: 1x, 2x, 5x, 10x)
Fast forward (each click changes the speed in sequence: 2x, 5x, 10x)

Returning to the Live Video



Switch from the recorded video to the live video.



Note

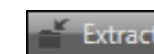
You cannot use [Fast Reverse], [Previous Frame], and [Next Frame] for recordings in MPEG-4 or H.264 format.
* RM-Lite does not support MPEG-4 or H.264 recording.

Zooming In/Out on the Timeline



Zoom in on the timeline to display more detail and zoom out to display the entire timeline.

Saving a Specific Video (to External Media)



Saves a specific recorded video in Quicktime format (*.mov) to a desired location.