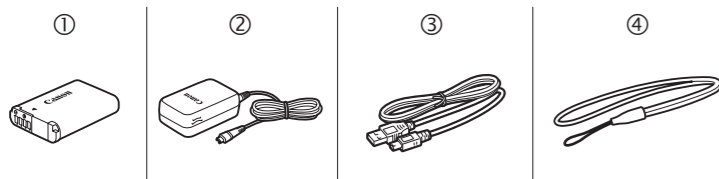




HD Camcorder  
**VIXIA mini X** Getting Started

**Package Contents**

- HD Camcorder VIXIA mini X
- NB-12L Battery Pack [①]
- CA-110 Compact Power Adapter [②]  
(CA-110E, including power cord, in Asia.)
- IFC-300PCU/S USB Cable [③]
- WS-DC11 Wrist Strap [④]
- Transfer Utility LE Startup Guide



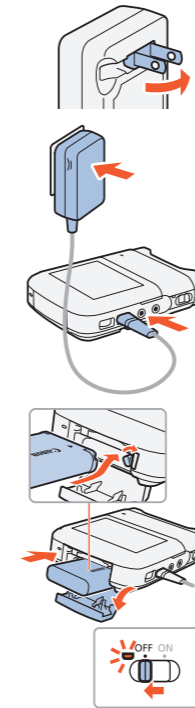
**1 Downloading the Camcorder's Instruction Manual (PDF File)**

This guide only introduces the most basic functions of the camcorder to get you started. To learn more about your camcorder, to read important handling precautions and to consult the troubleshooting section if an error message is displayed, be sure to read the full-version Instruction Manual (PDF file)\*. You can download the Instruction Manual from the following site. <http://www.canon.com/icpd/>  
\* Adobe® Reader® 6 or later is required to view the PDF Instruction Manual.

**2 Charging the Battery Pack**

Charge the supplied battery pack in advance, using the camcorder and supplied compact power adapter. Fully charging the battery pack will take about 4 hours.

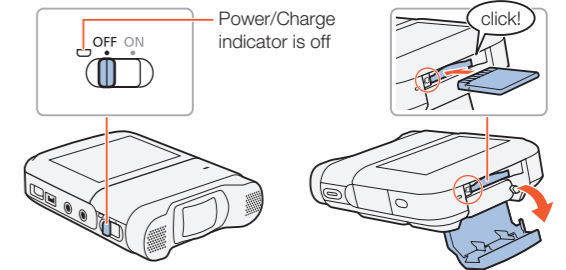
1. Plug the compact power adapter into a power outlet.
  - For Asia only: Connect the power cord to the compact power adapter before plugging the power cord into the power outlet.
2. Connect the compact power adapter to the camcorder's DC IN terminal.
3. Open the camcorder's battery compartment cover, insert the battery pack and close the cover.
4. Charging will start when the camcorder is turned off.
  - The power/charge indicator lights up in red. When the power/charge indicator goes out, the battery pack is fully charged.



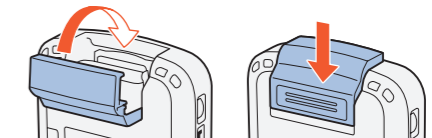
**3 Inserting a Memory Card**

You can use commercially available SD, SDHC and SDXC cards with this camcorder. We recommend using memory cards rated CLASS 4, 6 or 10. Initialize a memory card using the [Complete Initialization] option before using it with the camcorder for the first time ([PDF](#) **Initializing a Memory Card**).

1. Make sure the camcorder is off.
2. Open the memory card slot cover and insert the memory card with the label side facing down.



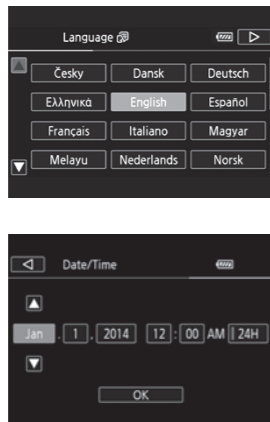
3. Close the memory card slot cover.



**4 Basic Setup**

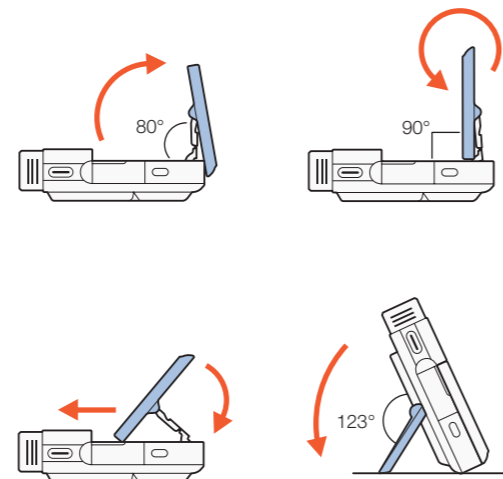
The first time you turn on the camcorder, you will be guided by the camcorder's basic setup screens to select the camcorder's language and set the date and time.

1. Turn on the camcorder.
2. Touch the desired language for onscreen displays and then touch [▷].
3. Touch the desired date/time format and then touch [▷].
4. Set the date and time.
  - Touch a field you want to change and touch [▲] or [▼] to change. Repeat as necessary.
  - Touch [24H] to use 24-hour clock or leave untouched to use AM/PM.
5. Touch [OK] to complete the basic setup and close the setup screen.



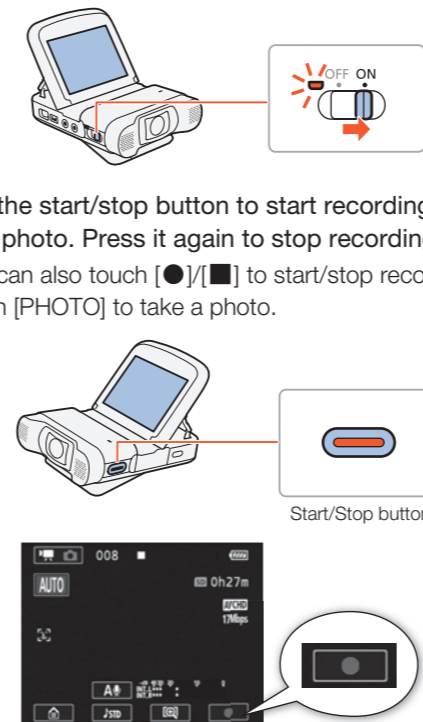
**5 Adjusting the Camcorder**

You can adjust the angle of the articulated LCD panel and the built-in stand. Change the position of the camcorder as necessary to match your shooting style.



**6 Shooting Video and Taking Photos**

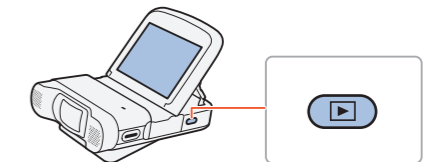
1. Turn on the camcorder.
  - To take photos, after the camcorder turns on, touch [📷] in the upper left to switch the camcorder to photo mode.
2. Press the start/stop button to start recording video or take a photo. Press it again to stop recording.
  - You can also touch [●]/[■] to start/stop recording and touch [PHOTO] to take a photo.



3. When you finish recording, turn off the camcorder.

**7 Playing Back Video and Viewing Photos**

1. Press and hold the [▶] button until an index screen appears.
  - To view photos, touch [🏠] ▶ [📷] Photo Playback to open the [📷] index screen.



2. Touch the thumbnail of the scene or photo you want to play back.
  - During playback, touch the screen to display the playback controls.

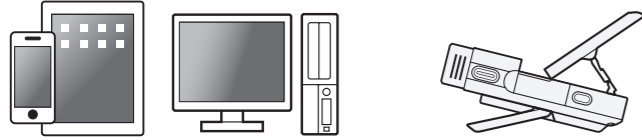
**To delete recordings**

From the index screen:

1. Touch [Edit] ▶ [Delete].
2. Select whether to delete all the scenes/photos recorded on the same day (for AVCHD movies) or in the same folder (for MP4 movies), selected scenes/photos, or all scenes/photos.
  - To select individual recordings: touch all the scenes/photos you wish to delete to mark them with a [✓], then touch [OK].
3. Touch [Yes] ▶ [OK].

## Wi-Fi Functions

The camcorder features a number of convenient Wi-Fi functions that will allow you to use it in combination with Wi-Fi enabled smartphones and tablets. For example, you can use a smartphone or tablet to control the camcorder remotely while recording or to upload recordings to the Web.



1. If necessary, install the required app on the smartphone or tablet.
2. Select the desired Wi-Fi function on the camcorder.
3. Wirelessly connect the device to the camcorder.

Note: The necessary procedure may differ according to the Wi-Fi function you wish to use. For details, be sure to refer to the PDF Instruction Manual ([PDF](#) **Wi-Fi Functions**).

## Optional Accessories

Canon offers a wide range of optional accessories for your camcorder. For details, be sure to refer to the PDF Instruction Manual ([PDF](#) **Optional Accessories**).

### Use of genuine Canon accessories is recommended.

The message [Battery communication error] is displayed if you use a non-genuine Canon battery pack, and user response is required. Note that Canon shall not be liable for any damages resulting from accidents, such as malfunction or fire, that occur due to use of non-genuine Canon battery packs.

This mark identifies genuine Canon video accessories. When you use Canon video equipment, we recommend Canon-brand accessories or products bearing the same mark.



## IMPORTANT SAFETY INSTRUCTIONS

### Important Warning



**CAUTION:**  
TO REDUCE THE RISK OF ELECTRIC SHOCK, DO NOT REMOVE COVER (OR BACK). NO USER-SERVICEABLE PARTS INSIDE. REFER SERVICING TO QUALIFIED SERVICE PERSONNEL.

The lightning flash with arrowhead symbol, within an equilateral triangle, is intended to alert the user to the presence of uninsulated "dangerous voltage" within the product's enclosure, that may be of sufficient magnitude to constitute a risk of electric shock to persons.

The exclamation point, within an equilateral triangle, is intended to alert the user to the presence of important operating and maintenance (servicing) instructions in the literature accompanying the product.

### IMPORTANT SAFETY INSTRUCTIONS

In these safety instructions the word "apparatus" refers to the Canon HD Camcorder VIXIA mini X and all its accessories.

- 1 Read these instructions.
- 2 Keep these instructions.
- 3 Heed all warnings.
- 4 Follow all instructions.
- 5 Do not use this apparatus near water.
- 6 Clean only with dry cloth.

- 7 Do not install near any heat sources such as radiators, heat registers, stoves, or other apparatus (including amplifiers) that produce heat.
- 8 Do not defeat the safety purpose of the polarized or grounding-type plug. A polarized plug has two blades with one wider than the other. A grounding type plug has two blades and a third grounding prong. The wide blade or the third prong are provided for your safety. If the provided plug does not fit into your outlet, consult an electrician for replacement of the obsolete outlet.
- 9 Protect the power cord from being walked on or pinched particularly at plugs, convenience receptacles, and the point where they exit from the apparatus.
- 10 Only use attachments/accessories specified by the manufacturer.
- 11 Unplug this apparatus during lightning storms or when unused for long periods of time.
- 12 Refer all servicing to qualified service personnel. Servicing is required when the apparatus has been damaged in any way, such as power-supply cord or plug is damaged, liquid has been spilled or objects have fallen into the apparatus, the apparatus has been exposed to rain or moisture, does not operate normally, or has been dropped.

CA-110 identification plate is located on the bottom.

CAN ICES-3(B)/NMB-3(B)

## Important Usage Instructions

### WARNING

TO REDUCE THE RISK OF FIRE OR ELECTRIC SHOCK, DO NOT EXPOSE THIS PRODUCT TO RAIN OR MOISTURE.

### COPYRIGHT WARNING:

Unauthorized recording of copyrighted materials may infringe on the rights of copyright owners and be contrary to copyright laws.

While using the compact power adapter, do not wrap it or cover it with a piece of cloth, and do not place it in confined narrow spaces.

### FCC/IC NOTICE

#### HD Camcorder, VIXIA mini X systems

This device complies with Part 15 of the FCC Rules. Operation is subject to the following two conditions: (1) This device may not cause harmful interference, and (2) this device must accept any interference received, including interference that may cause undesired operation.

Note: This equipment has been tested and found to comply with the limits for class B digital device, pursuant to Part 15 of the FCC Rules. These limits are designed to provide reasonable protection against harmful interference in a residential installation. This equipment generates, uses and can radiate radio frequency energy and, if not installed and use in accordance with the instructions, may cause harmful interference to radio communications. However, there is no guarantee that interference will not occur in a particular installation. If this equipment does cause harmful interference to radio or television reception, which can be determined by turning the equipment off and on, the user is encouraged to try to correct the interference by one or more of the following measures:

- Reorient or relocate the receiving antenna.
- Increase the separation between the equipment and receiver.
- Connect the equipment into an outlet on a circuit different from that to which the receiver is connected.
- Consult the dealer or an experienced radio/TV technician for help.

Use of shielded cable is required to comply with class B limits in Subpart B of Part 15 of FCC Rules. Do not make any changes or modifications to the equipment unless otherwise specified in the manual. If such changes or modifications should be made, you could be required to stop operation of the equipment.

#### Model ID0036 (including WLAN Module Model RF401, FCC ID: AZD401)

This device complies with Industry Canada license-exempt RSS standard(s). Operation is subject to the following two conditions: (1) this device may not cause interference, and (2) this device must accept any interference, including interference that may cause undesired operation of the device.

This transmitter must not be co-located or operated in conjunction with any other antenna or transmitter.

The available scientific evidence does not show that any health problems are associated with using low-power wireless devices. There is no proof, however, that these low power wireless devices are absolutely safe. Low-power wireless devices emit low levels of radio frequency energy (RF) in the microwave range while being used. Whereas high levels of RF can produce health effects (by heating tissue), exposure to low-level RF that does not produce heating effects causes no known adverse health effects. Many studies of low-level RF exposures have not found any biological effects. Some studies have suggested that some biological effects might occur, but such findings have not been confirmed by additional research. This model has been tested and found to comply with FCC/IC radiation exposure limits set forth for an uncontrolled equipment and meets the FCC radio frequency (RF) Exposure Guidelines and RSS-102 of the IC radio frequency (RF) Exposure rules.

Canon U.S.A., Inc.  
One Canon Park, Melville, NY 11747, USA  
Tel No. 1-800-OK-CANON (1-800-652-2666)

The Mains plug is used as the disconnect device. The Mains plug shall remain readily operable to disconnect the plug in case of an accident.

### CAUTION:

- Danger of explosion if the wrong type of batteries are attached. Use only the same type of batteries.
- Do not expose batteries or product to excessive heat such as the inside of a car under direct sunlight, fire, etc.

### USA and Canada only:

The Lithium ion/polymer battery that powers the product is recyclable. Please call 1-800-8-BATTERY for information on how to recycle this battery.



### Precautions About the Battery Pack

#### DANGER!

#### Treat the battery pack with care.

- Keep it away from fire (or it might explode).
- Do not expose the battery pack to temperature higher than 60 °C (140 °F). Do not leave it near a heater or inside a car in hot weather.
- Do not try to disassemble or modify it.
- Do not drop it or subject it to shocks.
- Do not get it wet.

## Canon

Canon Inc. 30-2, Shimomaruko 3-chome, Ohta-ku, Tokyo 146-8501, Japan

### USA

#### CANON U.S.A., INC. NEW JERSEY OFFICE

100 Jamesburg Road, Jamesburg, NJ 08831 USA

#### CANON U.S.A., INC. CHICAGO OFFICE

100 Park Blvd., Itasca, IL 60143 USA

#### CANON U.S.A., INC. LOS ANGELES OFFICE

15955 Alton Parkway, Irvine, CA 92618 USA

#### CANON U.S.A., INC. HONOLULU OFFICE

210 Ward Avenue, Suite 200, Honolulu, HI 96814 USA

❖ If you have any questions, call the Canon U.S.A. Information Center toll-free at 1-800-828-4040 (USA only).

### CANADA

#### CANON CANADA INC.

6390 Dixie Road, Mississauga, ON L5T 1P7

❖ If you have any questions, call the Canon Canada Information Center toll free (in Canada only) at 1-800-OK-CANON (1-800-652-2666).

❖ Si vous avez des questions, veuillez téléphoner 1-800-OK-CANON (1-800-652-2666, sans frais au Canada seulement).

### Important Note About the Memory Card

- Observe the following precautions while the ACCESS indicator is on or flashing. Failing to do so may result in permanent data loss or damage to the memory card.
  - Do not open the memory card slot cover.
  - Do not disconnect the camcorder's power source or turn off the camcorder.
  - Do not press the button.

### REGIONS OF USE

The VIXIA mini X is in compliance (as of January 2014) with the radio signal regulations of the regions listed below. For details on other regions where it can be used, make inquiries with the contacts listed inside the blue frame at the bottom of this page.

#### REGIONS

Canada, Hong Kong S.A.R., South Korea, Taiwan, USA

#### Model

ID0036: VIXIA mini X

### Trademark Acknowledgements

- SD, SDHC and SDXC Logos are trademarks of SD-3C, LLC.
- HDMI, the HDMI logo and High-Definition Multimedia Interface are trademarks or registered trademarks of HDMI Licensing LLC in the United States and other countries.
- "AVCHD" and the "AVCHD" logo are trademarks of Panasonic Corporation and Sony Corporation.
- Manufactured under license from Dolby Laboratories. "Dolby" and the double-D symbol are trademarks of Dolby Laboratories.
- Wi-Fi is a registered trademark of the Wi-Fi Alliance.
- Wi-Fi Certified, WPA, WPA2, and the Wi-Fi Certified logo are trademarks of the Wi-Fi Alliance.
- Other names and products not mentioned above may be trademarks or registered trademarks of their respective companies.
- This product is licensed under AT&T patents for the MPEG-4 standard and may be used for encoding MPEG-4 compliant video and/or decoding MPEG-4 compliant video that was encoded only (1) for a personal and non-commercial purpose or (2) by a video provider licensed under the AT&T patents to provide MPEG-4 compliant video. No license is granted or implied for any other use for MPEG-4 standard.



### MÉXICO

#### CANON MEXICANA, S DE RL DE CV

Blvd. Manuel Ávila Camacho No. 138, Piso 17 Col. Lomas de Chapultepec, C.P. 11000 México, D.F., México

#### CANON U.S.A., INC. NEW JERSEY OFFICE

100 Jamesburg Road, Jamesburg, NJ 08831 USA

### CENTRO Y SURAMÉRICA

#### CANON LATIN AMERICA, INC.

One Canon Park, Melville, NY 11747 USA

### ASIA

#### CANON HONGKONG COMPANY LTD.

19/F, The Metropolis Tower, 10 Metropolis Drive, Hungghom, Kowloon, Hong Kong  
Tel: +852 3191 2333, Fax: +852 2428 3963

The information in this guide is verified as of January 2014. Specifications and outer appearance are subject to change without previous notice.