

Canon

# Getting Started

imageCLASS

LBP112

*Getting Started*

간단 설치 가이드

การเริ่มต้นใช้งาน

Bắt Đầu

Langkah Permulaan



*Quick Setup*

NEXT PAGE



*Quick Operation*

P.15

Please read "Important Safety Instructions" before operating this product. After you finish reading this guide, store it in a safe place for future reference.

The information in this document is subject to change without notice.



[canon.com/oip-manual](http://canon.com/oip-manual)

### Getting Started

Please read "Important Safety Instructions" before operating this product.

➡ P.20

After you finish reading this guide, store it in a safe place for future reference.

The information in this document is subject to change without notice.

### 간단 설치 가이드

본 제품을 작동하기 전에 "중요 안전 지침"을 읽으십시오.

➡ P.26

본 가이드를 다 읽은 후 향후 참조할 수 있도록 안전한 장소에 보관하십시오.

이 문서의 내용은 예고 없이 변경될 수 있습니다.

### การเริ่มต้นใช้งาน

โปรดอ่าน "คำแนะนำด้านความปลอดภัยที่สำคัญ" ก่อนใช้งานผลิตภัณฑ์นี้

➡ P.32

หลังจากอ่านคู่มือนี้จบแล้ว ควรจัดเก็บไว้ในที่ปลอดภัยเพื่อใช้อ้างอิงในภายหลัง

ข้อมูลในเอกสารนี้สามารถเปลี่ยนแปลงได้โดยไม่ต้องแจ้งให้ทราบ

### Bắt Đầu

Vui lòng đọc "Các Chỉ dẫn An toàn Quan trọng" trước khi vận hành sản phẩm này.

➡ P.38

Sau khi đọc xong cuốn hướng dẫn này, vui lòng lưu trữ sách ở nơi an toàn để tham khảo trong tương lai.

Thông tin trong tài liệu này có thể được thay đổi mà không cần thông báo.

### Langkah Permulaan

Sila baca "Arahan Keselamatan Penting" sebelum mengendalikan produk ini.

➡ P.44

Selepas anda habis membaca panduan ini, simpan dalam tempat yang selamat untuk rujukan masa akan datang.

Maklumat dalam dokumen ini tertakluk pada perubahan tanpa notis.



You can access

[canon.com/oip-manual](http://canon.com/oip-manual) to read the User's Guide that describes all functions of this machine.

[canon.com/oip-manual](http://canon.com/oip-manual)에 액세스하여 본 기기의 모든 기능을 설명하는 사용자 안내서를 읽을 수 있습니다.

คุณสามารถเข้าถึง

[canon.com/oip-manual](http://canon.com/oip-manual) เพื่ออ่านคู่มือการใช้งานที่อธิบายถึงฟังก์ชันทั้งหมดของเครื่องนี้

Bạn có thể truy cập vào

[canon.com/oip-manual](http://canon.com/oip-manual) để đọc Hướng dẫn người dùng trong đó có mô tả tất cả chức năng của máy này.

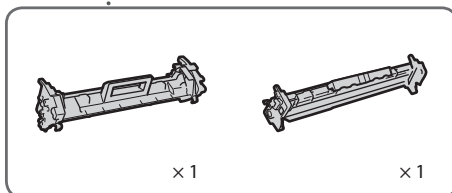
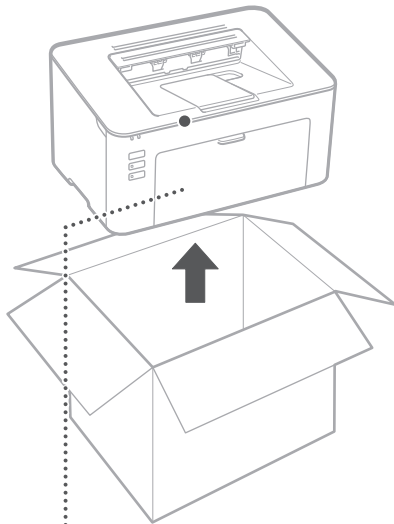
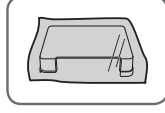
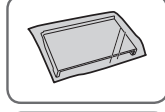
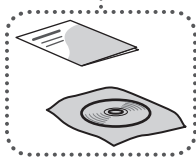
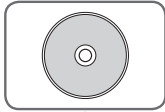
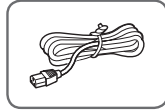
Anda boleh mengakses

[canon.com/oip-manual](http://canon.com/oip-manual) untuk membaca Panduan Pengguna yang menerangkan semua fungsi mesin ini.

# Installation of the Machine



## Items Included with the Machine



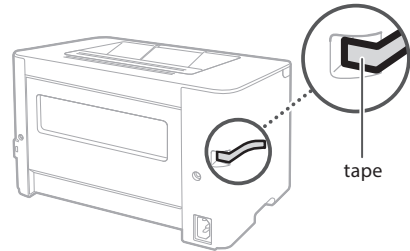
Toner cartridge and drum cartridge (included with the machine)



## Installing the Machine

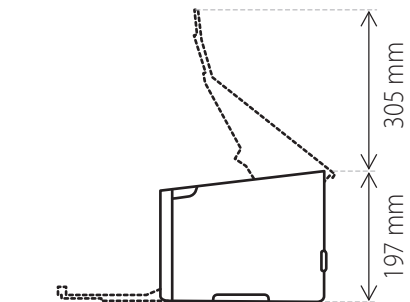
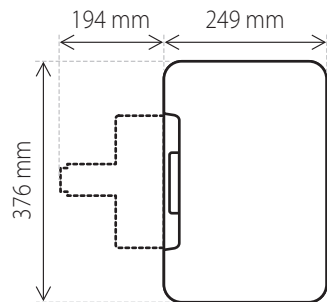
### Before starting the installation

- Remove all of the tape.
- Do not remove the tape that covers the USB port.



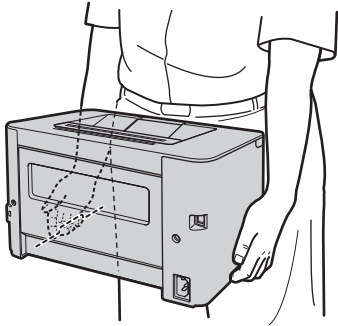
### Installation Requirements

Provide a space of 100 mm or more around the machine.



# Installation of the Machine

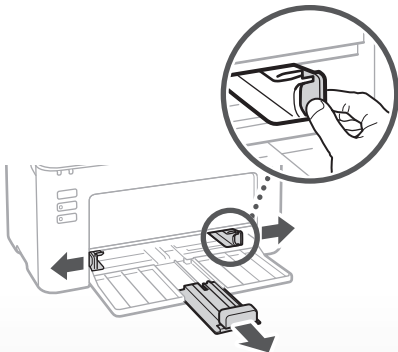
1



2

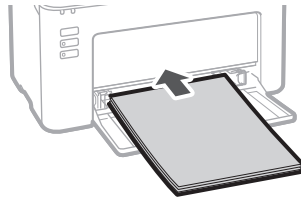


3

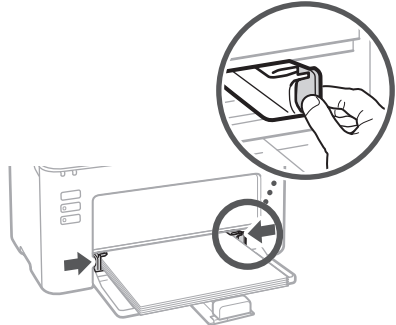


⋮

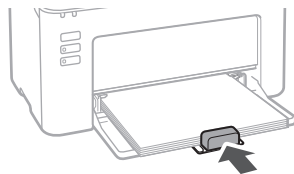
4



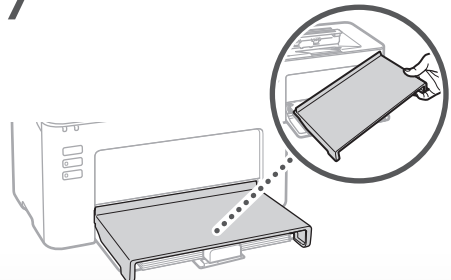
5



6

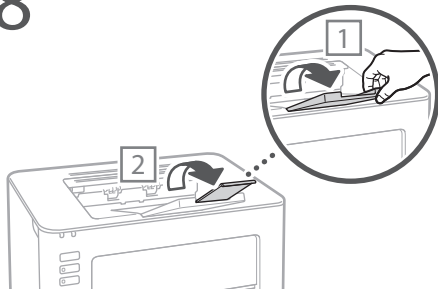


7

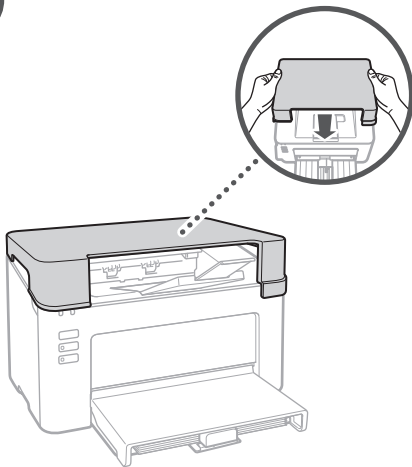


⋮

8



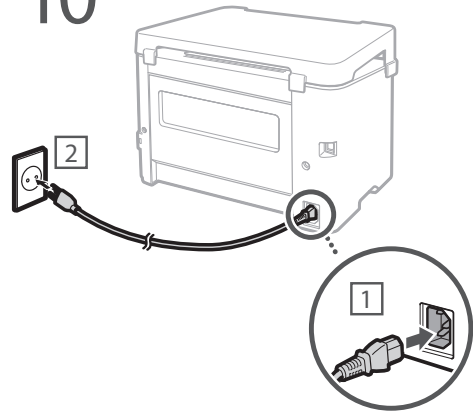
9



- Place the output cover whenever you use the machine.
- Do not place or drop heavy objects on the output cover.



10



Next, proceed to configure the machine.

En

Ko

Th

Vi

Ms

# Configuring the Machine

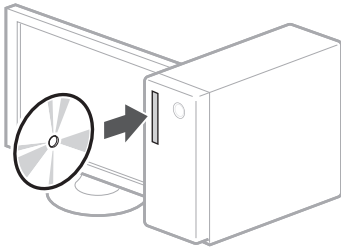
Configure the settings in the following order.

## Installing the Driver and Software

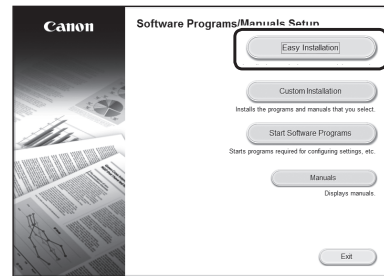
### Before the Installation

- Do not connect the USB cable before installing the driver. If you did, disconnect the USB cable from the computer, close the dialog box, and then perform the following procedure from step 1.
- The procedure described here is only applicable when your computer runs on the Windows OS. For more details on the software installation procedure, see the driver's manual.
- For the installation when your computer runs on the macOS, see the driver's manual.
- Your machine may not come with the driver for the macOS, depending on the time of purchase. New drivers are uploaded to the Canon website, and you can download and use the latest one.

1.

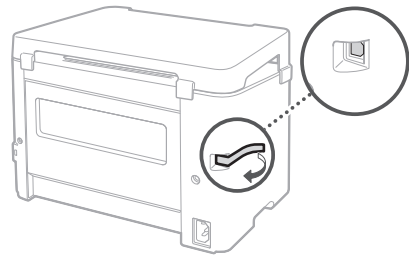


2.



If the screen is not displayed properly, re-insert the CD-ROM/DVD-ROM or search for "D:\MInst.exe" on the Windows platform (This description assumes that "D:" is the CD-ROM/DVD-ROM drive name).

- When the screen to connect the USB cable to the machine is displayed, remove the tape that covers the USB port.



Now you are finished with the configuration of the machine.

# Memo



# 기기 구성

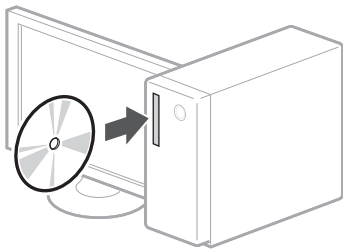
다음 순서로 설정을 구성하십시오.

## 드라이버 및 소프트웨어 설치

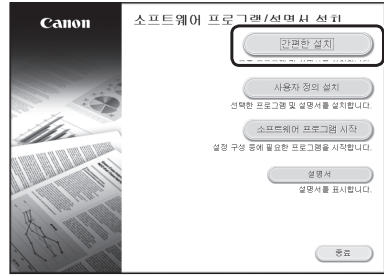
### 설치하기 전에

- 드라이버를 설치하기 전에 USB 케이블을 연결하지 마십시오. 연결한 경우 컴퓨터에서 USB 케이블을 분리하고 대화 상자를 닫은 후 다음 절차를 1단계부터 수행하십시오.
- 여기에서 설명하는 절차는 컴퓨터가 Windows OS로 실행되는 경우에만 적용할 수 있습니다. 소프트웨어 설치 절차에 대한 자세한 내용은 드라이버 설명서를 참조하십시오.
- 컴퓨터가 macOS로 실행되는 경우 설치 방법은 드라이버 설명서를 참조하십시오.
- 구매 시기에 따라 기기에 macOS용 드라이버가 제공되지 않을 수 있습니다. 새로운 드라이버가 Canon 웹 사이트에 업로드되므로 최신 드라이버를 다운로드하여 사용할 수 있습니다.

1.

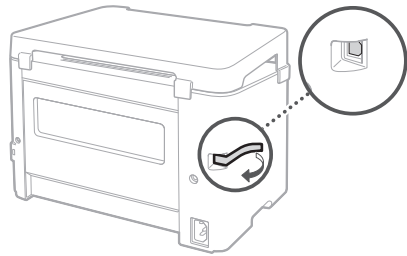


2.



화면이 올바르게 표시되지 않으면 CD-ROM/DVD-ROM을 다시 삽입하거나 Windows 플랫폼에서 "D:\WMIInst.exe"를 검색합니다(이 설명에서는 CD-ROM/DVD-ROM 드라이브 이름을 "D:"로 가정함).

- USB 케이블을 기기에 연결하기 위한 화면이 표시되면 USB 포트의 테이프를 제거합니다.



이제 기기 구성이 완료되었습니다.



# Memo



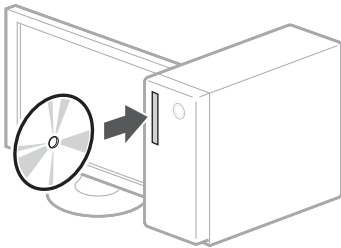
A large, empty rectangular box with a thin black border, intended for writing a memo.

## การติดตั้งไดรเวอร์และซอฟต์แวร์

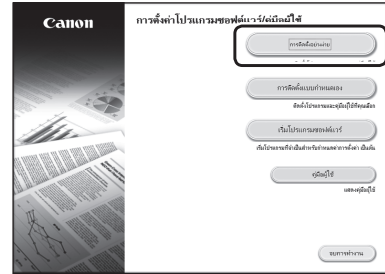
### ก่อนทำการติดตั้ง

- ห้ามเชื่อมต่อสายเคเบิล USB ก่อนทำการติดตั้งไดรเวอร์ หากคุณทำการเชื่อมต่ออยู่ ให้ถอดสายเคเบิล USB ออกจากเครื่องคอมพิวเตอร์ก่อน ปิดกล่องข้อความ และจากนั้น ดำเนินการตามขั้นตอน โดยเริ่มจากขั้นตอนที่ 1
- ขั้นตอนนี้อธิบายไว้ที่นี่ จะใช้ได้ในกรณีที่คุณทำงานอยู่บนระบบปฏิบัติการ Windows เท่านั้น สำหรับรายละเอียดเพิ่มเติมของขั้นตอนการติดตั้งซอฟต์แวร์ โปรดดูที่คู่มือการใช้งานไดรเวอร์
- สำหรับการติดตั้งซอฟต์แวร์ เมื่อเครื่องคอมพิวเตอร์ของคุณทำงานอยู่บนระบบปฏิบัติการ macOS โปรดดูที่คู่มือการใช้งานไดรเวอร์
- เครื่องพิมพ์ของคุณอาจจะมีไดรเวอร์สำหรับระบบปฏิบัติการ macOS ให้มาด้วย ในขณะที่จัดซื้อ ไดรเวอร์ใหม่ ๆ จะถูกอัปเดตไปยังเว็บไซต์ของ Canon และคุณสามารถทำการดาวน์โหลดและใช้งานไดรเวอร์ชั้นล่าสุดได้จากที่นั่น

1.

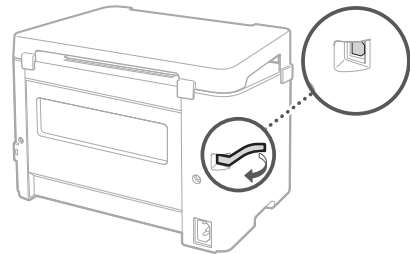


2.



หากหน้าจอแสดงผลไม่ได้แสดงผลอย่างถูกต้อง โปรดใส่แผ่น CD-ROM/DVD-ROM กลับเข้าไปใหม่อีกครั้ง หรือค้นหา "D:\MInst.exe" บนแพลตฟอร์ม Windows (คำอธิบายนี้ สมมติว่า "D:" เป็นชื่อไดรฟ์ CD-ROM/DVD-ROM)

- เมื่อหน้าจอแจ้งให้ทำการเชื่อมต่อสายเคเบิล USB เข้ากับเครื่องพิมพ์ ให้ถอดเทปที่ปิดพอร์ต USB ออก



ในตอนนี้ คุณก็ได้ทำการกำหนดค่าเครื่องพิมพ์ของคุณเป็นที่เรียบร้อยแล้ว

# บันทึกย่อ

# Cấu hình cho Máy

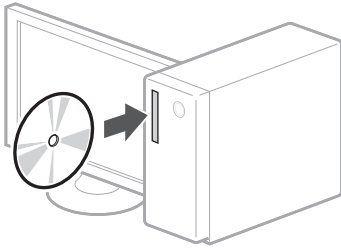
Cấu hình cài đặt theo thứ tự sau.

## Cài đặt Trình điều khiển và Phần mềm

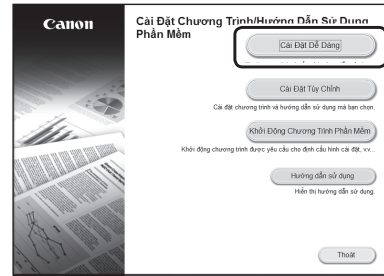
### Trước khi cài đặt

- Không kết nối cáp USB trước khi cài đặt trình điều khiển. Nếu bạn đã kết nối, hãy ngắt kết nối cáp USB với máy tính, đóng hộp thoại và thực hiện quy trình sau từ bước 1.
- Quy trình được mô tả ở đây chỉ có thể áp dụng khi máy tính của bạn chạy trên hệ điều hành Windows. Để biết thêm chi tiết về quy trình cài đặt phần mềm, vui lòng xem hướng dẫn sử dụng trình điều khiển.
- Để cài đặt khi máy tính chạy macOS, vui lòng xem hướng dẫn sử dụng trình điều khiển.
- Tùy vào thời điểm mua mà máy của bạn có thể không có trình điều khiển kèm theo dành cho macOS. Trình điều khiển mới được tải lên trên trang web Canon, bạn có thể tải về và sử dụng phiên bản mới nhất.

1.

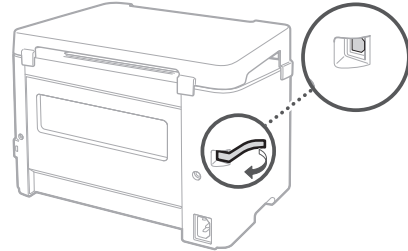


2.



Nếu màn hình không hiển thị đúng, vui lòng cho đĩa CD-ROM/DVD-ROM vào lần nữa hoặc tìm "D:\MInst.exe" trong nền tảng Windows (Mô tả này giả định "D:" là tên ổ đĩa CD-ROM/DVD-ROM).

- Khi xuất hiện màn hình kết nối cáp USB vào máy, tháo băng dính dán trên cổng USB ra.



**Bạn đã hoàn tất cấu hình cho máy.**

# Ghi chú



# Mengkonfigurasi Mesin

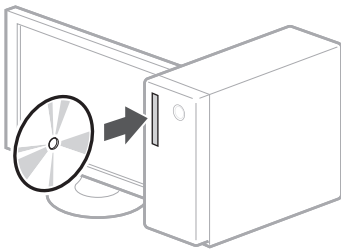
Konfigurasikan tetapan dalam urutan berikut.

## Memasang Pemacu dan Perisian

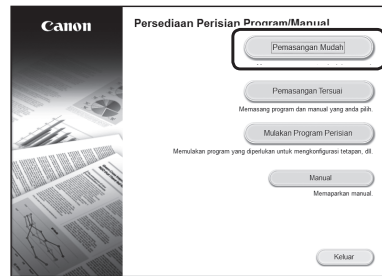
### Sebelum Pemasangan

- Jangan sambung kabel USB sebelum memasang pemacu. Jika anda telah melakukannya, cabut kabel USB daripada komputer, tutup kotak dialog dan kemudian jalankan prosedur berikut bermula dengan langkah 1.
- Prosedur yang diterangkan di sini hanya berkaitan apabila komputer anda menggunakan Windows OS. Untuk butiran lanjut mengenai prosedur pemasangan perisian, lihat manual pemacu.
- Untuk pemasangan apabila komputer anda menggunakan macOS, lihat manual pemacu.
- Mesin anda mungkin tidak disediakan dengan pemacu untuk macOS, bergantung pada masa pembelian. Pemacu baru dimuat naik ke laman web Canon, dan anda boleh memuat turun dan menggunakan yang terkini.

1.

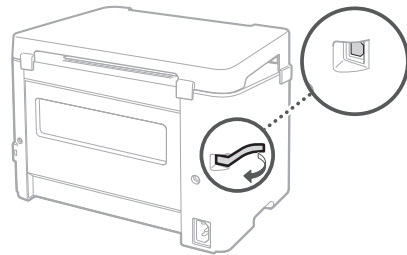


2.



Jika skrin tidak dipaparkan dengan betul, masukkan semula CD-ROM/DVD-ROM atau cari "D:\MInst.exe" pada platform Windows (Penerangan ini menganggap bahawa "D:" ialah nama pemacu CD-ROM/DVD-ROM).

- Apabila skrin untuk menyambungkan kabel USB kepada mesin dipaparkan, tanggalkan pita yang menutupi port USB.



Sekarang anda sudah selesai mengkonfigurasi mesin.

# Quick Operation

---

Quick Operation

En

빠른 조작

Ko

การใช้งานแบบเร็ว

Th

Vận hành nhanh

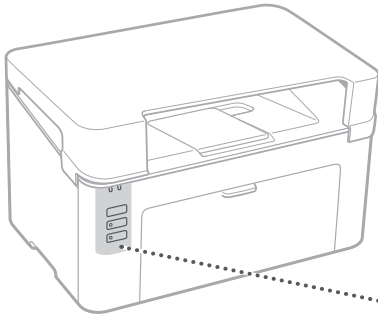
Vi

Operasi Pantas

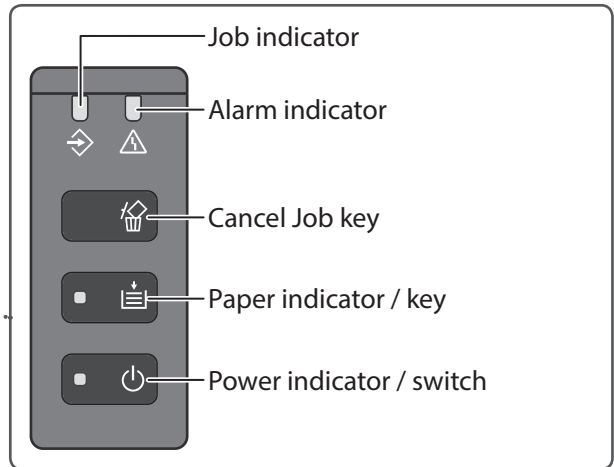
Ms

## Start Operating the Machine

Machine



Keys and Indicators




### Printer Status Window



The Printer Status Window allows you to check the printer status, perform utility functions, and specify the settings for the printer unit, and so on.

For details

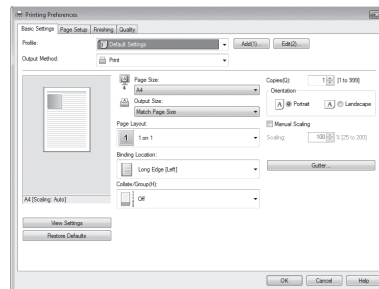
 [Printer Status Window Help](#)





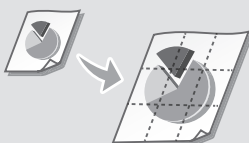
## Printing

1. Open the document to print, and select the print function of the application.
2. Select the printer driver for the machine, and select [Preferences] or [Properties].
3. Specify the paper size.
4. Specify the paper source and paper type.
5. Specify the print settings, as necessary.
6. Select [OK].
7. Select [Print] or [OK].



### Useful print settings

- N on 1
- Collated Printing
- Poster Printing



For details

➔ "Printing" in the User's Guide

# Loading Paper

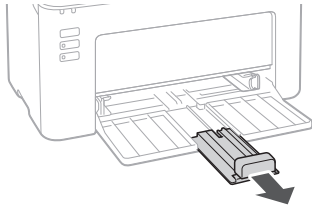
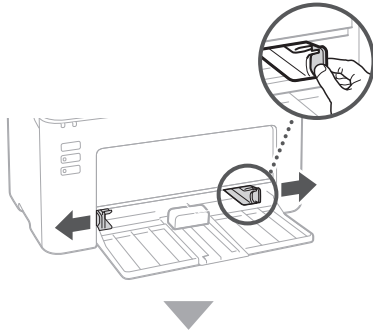
For details

➔ "Loading Paper" in the User's Guide

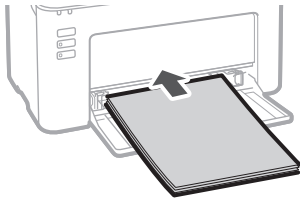
## Loading in the Drawer

1 Open the drawer.

2

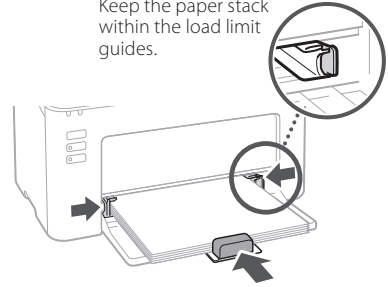


3



4

Keep the paper stack within the load limit guides.



5 Put the cover on the drawer.

# If a Problem Has Occurred

For details

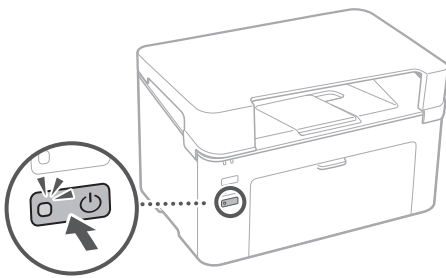
➔ "Maintenance" and "Troubleshooting" in the User's Guide

## The Machine Does Not Seem to Work

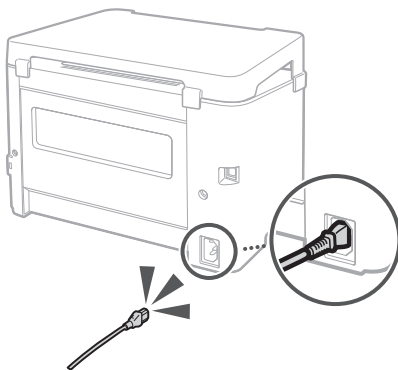
Check the following.

- Is the power turned ON?
- Is the machine out of sleep mode?

If the power indicator is not lit, press the power switch.



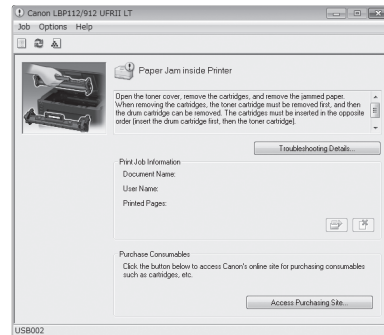
- Is the power cord connected correctly?



If the problem persists, see the User's Guide.

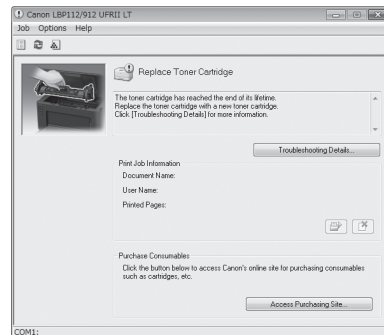
## Paper Jams Have Occurred

Clear the paper jams, according to the message displayed in the Printer Status Window.



## Replacing the Consumables

Replace the consumables, according to the message displayed in the Printer Status Window.



### Model number of replacement consumables

- Canon Toner Cartridge 047
- Canon Drum Cartridge 049

# Appendix

## Important Safety Instructions

This manual describes only warnings and cautions for the installation and the power supply. Be sure to read "Important Safety Instructions" described in the User's Guide also.

### ⚠ WARNING

Indicates a warning concerning operations that may lead to death or injury to persons if not performed correctly. To use the machine safely, always pay attention to these warnings.

### ⚠ CAUTION

Indicates a caution concerning operations that may lead to injury to persons if not performed correctly. To use the machine safely, always pay attention to these cautions.

### 🔑 IMPORTANT

Indicates operational requirements and restrictions. Be sure to read these items carefully to operate the machine correctly and avoid damage to the machine or property.

### Installation

To use this machine safely and comfortably, carefully read the following precautions and install the machine in an appropriate location.

#### ⚠ WARNING

Do not install in a location that may result in a fire or electrical shock

- A location where the ventilation slots are blocked (too close to walls, beds, sofas, rugs, or similar objects)
- A damp or dusty location
- A location exposed to direct sunlight or outdoors
- A location subject to high temperatures
- A location exposed to open flames
- Near alcohol, paint thinners or other flammable substances

#### Other warnings

- Do not connect unapproved cables to this machine. Doing so may result in a fire or electrical shock.
- Do not place necklaces and other metal objects or containers filled with liquid on the machine. If foreign substances come in contact with electrical parts inside the machine, it may result in a fire or electrical shock.
- If any foreign substance falls into this machine, unplug the power plug from the AC power outlet and contact your local authorized Canon dealer.

#### ⚠ CAUTION

Do not install in the following locations

- The machine may drop or fall, resulting in injury.
- An unstable location
  - A location exposed to vibrations

#### Other cautions

- When carrying this machine, follow the instructions in this manual. If carried improperly, it may fall, resulting in injury.
- When installing this machine, be careful not to get your hands caught between the machine and the floor or walls. Doing so may result in injury.

#### Avoid poorly ventilated locations

This machine generates a slight amount of ozone and other emissions during normal use. These emissions are not harmful to health. However, they may be noticeable during extended use or long production runs in poorly ventilated rooms. To maintain a comfortable working environment, it is recommended that the room where the machine operates be appropriately ventilated. Also avoid locations where people would be exposed to emissions from the machine.

#### Power Supply

##### ⚠ WARNING

- Use only a power supply that meets the specified voltage requirements. Failure to do so may result in a fire or electrical shock.
- Do not use power cords other than the one provided, as this may result in a fire or electrical shock.
- The provided power cord is intended for use with this machine. Do not connect the power cord to other devices.
- Do not modify, pull, forcibly bend, or perform any other act that may damage the power cord. Do not place heavy objects on the power cord. Damaging the power cord may result in a fire or electrical shock.
- Do not plug in or unplug the power plug with wet hands, as this may result in an electrical shock.
- Do not use extension cords or multi-plug power strips with the machine. Doing so may result in a fire or electrical shock.
- Do not wrap the power cord or tie it in a knot, as this may result in a fire or electrical shock.
- Insert the power plug completely into the AC power outlet. Failure to do so may result in a fire or electrical shock.
- Remove the power plug completely from the AC power outlet during a thunder storm. Failure to do so may result in a fire, electrical shock, or damage to the machine.
- Make sure that the power supply for the machine is safe, and has a steady voltage.
- Keep the power cord away from a heat source; failure to do this may cause the power cord coating to melt, resulting in a fire or electrical shock.

#### Avoid the following situations:

If excessive stress is applied to the connection part of the power cord, it may damage the power cord or the wires inside the machine may disconnect. This could result in a fire.

- Connecting and disconnecting the power cord frequently.
- Tripping over the power cord.
- The power cord is bent near the connection part, and continuous stress is being applied to the power outlet or the connection part.
- Applying excessive force on the power plug.

##### ⚠ CAUTION

Install this machine near the power outlet and leave sufficient space around the power plug so that it can be unplugged easily in an emergency.

#### Handling

##### ⚠ CAUTION

###### Laser Safety

This product is confirmed as a Class 1 laser product in IEC60825-1:2014 and EN60825-1:2014.

CLASS 1 LASER PRODUCT

LASER KLASSE 1

APPAREIL À LASER DE CLASSE 1

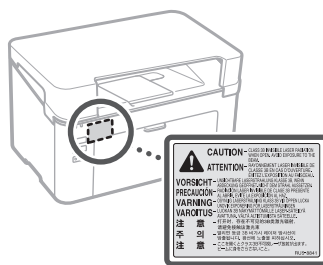
APPARECCHIO LASER DI CLASSE 1

PRODUCTO LÁSER DE CLASE 1  
APARELHO A LASER DE CLASSE 1  
LUOKAN 1 LASER-TUOTE  
LASERPRODUKT KLASS 1

The laser beam can be harmful to human bodies. Since radiation emitted inside the product is completely confined within protective housings and external covers, the laser beam cannot escape from the machine during any phase of user operation. Read the following remarks and instructions for safety.

- Never open covers other than those instructed in the manuals for this machine.
- If the laser beam should escape and enter your eyes, exposure may cause damage to your eyes.
- Use of controls, adjustments, or performance of procedures other than those specified in this manual may result in hazardous radiation exposure.

#### Laser Safety Label



#### Safety-Related Symbols

- | Power switch: "ON" position
- Power switch: "OFF" position
- ⏻ Power switch: "STAND-BY" position
- ⓘ Push-push switch: ■ "ON" ▮ "OFF"
- ⚡ Protective earthing terminal
- ⚠ Dangerous voltage inside. Do not open covers other than instructed.
- ⚠ CAUTION: Hot surface. Do not touch.
- Ⓜ Class II equipment
- ⚠ Moving parts: Keep body parts away from moving parts
- ⚠ CAUTION: An electrical shock may occur.
- 🔌 Remove all the power plugs from the power outlet.
- ⚠ There are sharp edges. Keep body parts away from sharp edges.
- Some of symbols shown above may not be affixed depending on the product.

## Consumables

##### ⚠ WARNING

Do not dispose of used toner cartridges in open flames. Also, do not store toner cartridges or paper in a location exposed to open flames. This may cause the toner or paper to ignite, and result in burns or fire.

# Notice

## Product Name

Safety regulations require the product's name to be registered.

In some regions where this product is sold, the following name(s) in parentheses ( ) may be registered instead.

imageCLASS LBP112 (F173000)

## EMC requirements of EC Directive

This equipment conforms with the essential EMC requirements of EC Directive. We declare that this product conforms with the EMC requirements of EC Directive at nominal mains input 230 V, 50 Hz although the rated input of the product is 220 to 240 V, 50/60 Hz. Use of shielded cable is necessary to comply with the technical EMC requirements of EC Directive.

## India E-Waste Rule



You can see the information about proper handling equipment after use in the latest User's Guide (HTML manual) from the Canon website ([canon.com/oip-manual](http://canon.com/oip-manual)).

## Disclaimers

- The information in this document is subject to change without notice.
- CANON INC. MAKES NO WARRANTY OF ANY KIND WITH REGARD TO THIS MATERIAL, EITHER EXPRESS OR IMPLIED, EXCEPT AS PROVIDED HEREIN, INCLUDING WITHOUT LIMITATION, THEREOF, WARRANTIES AS TO MARKETABILITY, MERCHANTABILITY, FITNESS FOR A PARTICULAR PURPOSE OF USE, OR NON-INFRINGEMENT. CANON INC. SHALL NOT BE LIABLE FOR ANY DIRECT, INCIDENTAL, OR CONSEQUENTIAL DAMAGES OF ANY NATURE, OR LOSSES OR EXPENSES RESULTING FROM THE USE OF THIS MATERIAL.

- (2) Rights holders of the SOFTWARE retain in all respects the title, ownership and intellectual property rights in and to the SOFTWARE. Except as expressly provided herein, no license or right, expressed or implied, is hereby conveyed or granted by rights holders of the SOFTWARE to you for any intellectual property of rights holders of the SOFTWARE.
- (3) You may use the SOFTWARE solely for use with the PRODUCT.
- (4) You may not assign, sublicense, market, distribute, or transfer the SOFTWARE to any third party without prior written consent of rights holders of the SOFTWARE.
- (5) Notwithstanding the foregoing, you may transfer the SOFTWARE only when (a) you assign all of your rights to the PRODUCT and all rights and obligations under the license conditions to transferee and (b) such transferee agrees to be bound by all these conditions.
- (6) You may not decompile, reverse engineer, disassemble or otherwise reduce the code of the SOFTWARE to human readable form.
- (7) You may not modify, adapt, translate, rent, lease or loan the SOFTWARE or create derivative works based on the SOFTWARE.
- (8) You are not entitled to remove or make separate copies of the SOFTWARE from the PRODUCT.
- (9) The human-readable portion (the source code) of the SOFTWARE is not licensed to you.

Notwithstanding (1) through (9) above, the PRODUCT includes third-party software modules accompanying the other license conditions, and these software modules are subject to the other license conditions. Please refer to the other license conditions of third-party software modules described in Appendix of Manual for the corresponding the PRODUCT. This Manual is available at <http://canon.com/oip-manual>.

By using the PRODUCT, you shall be deemed to have agreed to all applicable license conditions. If you do not agree to these license conditions, please contact your service representative.

V\_170511

# About This Manual

## Trademarks

Mac is a trademark of Apple Inc.

Microsoft, Windows, Windows Vista, Windows Server, Internet Explorer, Excel, and PowerPoint are either registered trademarks or trademarks of Microsoft Corporation in the United States and/or other countries.

Other product and company names herein may be the trademarks of their respective owners.

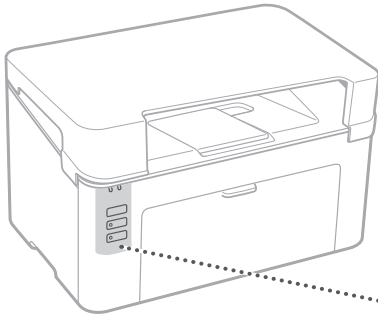
# Third Party Software

This Canon product (the "PRODUCT") includes third-party software modules. Use and distribution of these software modules, including any updates of such software modules (collectively, the "SOFTWARE") are subject to license conditions (1) through (9) below.

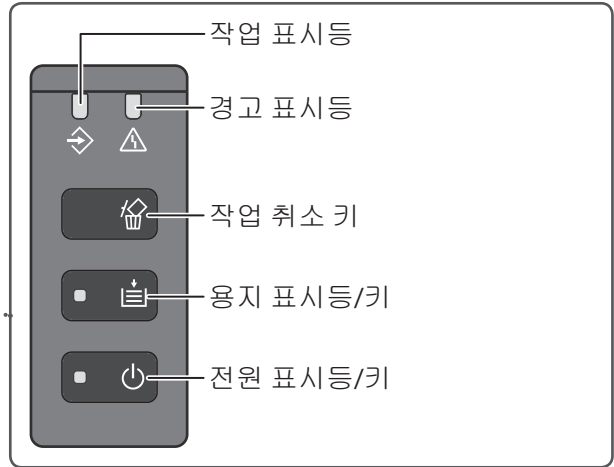
- (1) You agree that you will comply with any applicable export control laws, restrictions or regulations of the countries involved in the event that this PRODUCT including the SOFTWARE is shipped, transferred or exported into any country.

## 기기 조작 시작

기기



키 및 표시등



### 프린터 상태 창



프린터 상태 창에서는 프린터 상태를 확인하고, 유틸리티 기능을 수행하고, 프린터 장치에 대한 설정을 지정하는 등의 작업을 수행할 수 있습니다.

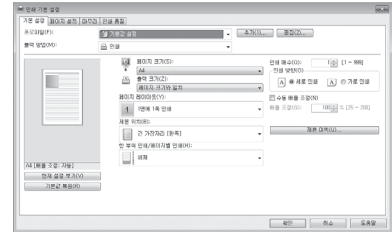
자세한 내용

➡ 프린터 상태 창 도움말



## 인쇄

1. 인쇄할 문서를 열고 응용 프로그램의 인쇄 기능을 선택합니다.
2. 기기의 프린터 드라이버를 선택하고 [기본 설정] 또는 [속성]을 선택합니다.
3. 용지 크기를 지정합니다.
4. 용지 공급원과 용지 종류를 지정합니다.
5. 필요에 따라 인쇄 설정을 지정합니다.
6. [확인]을 선택합니다.
7. [인쇄] 또는 [확인]을 선택합니다.

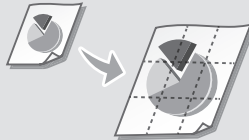


### 자세한 내용

➡ 사용자 안내서의 "인쇄"

### 유용한 인쇄 설정

- N on 1
- 한 부씩 인쇄
- 포스터 인쇄



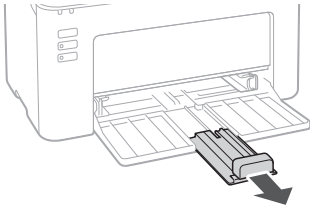
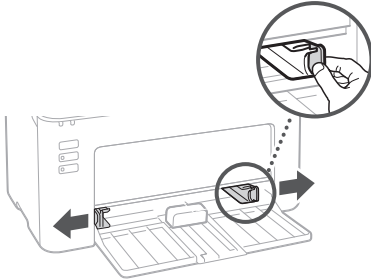
# 용지 적재

자세한 내용  
➡ 사용자 안내서의 "용지 적재"

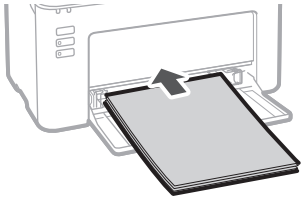
## 카세트에 용지 적재

1 카세트를 엽니다.

2



3



4

용지 더미가 적재 제한 가이드 안에 유지되도록 합니다.



5 카세트 덮개를 덮습니다.



# 문제가 발생한 경우

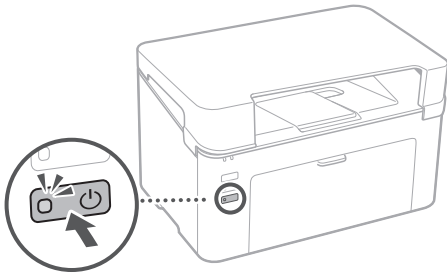
자세한 내용  
➡ 사용자 안내서의 "유지보수" 및 "문제 해결"

## 기기가 작동하지 않음

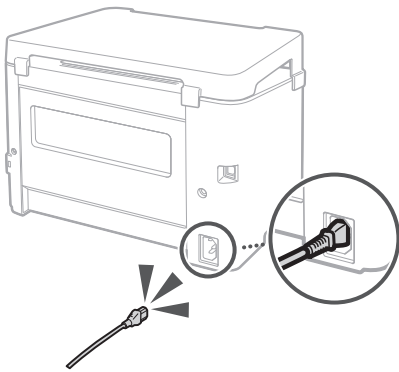
다음을 확인하십시오.

- 전원이 켜져 있습니까?
- 기기가 절전 모드에서 전환되었습니까?

전원 표시등에 불이 들어오지 않는 경우 전원 스위치를 누릅니다.



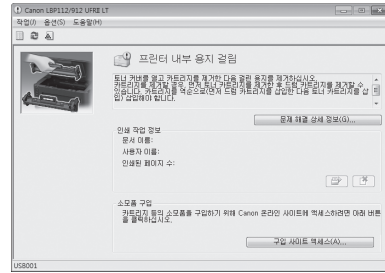
- 전원 코드가 올바르게 연결되어 있습니까?



문제가 지속되면 사용자 안내서를 참조하십시오.

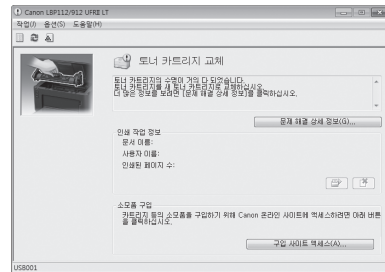
## 용지 걸림 발생

프린터 상태 창에 표시되는 메시지에 따라 용지 걸림을 해결합니다.



## 소모품 교체

프린터 상태 창에 표시되는 메시지에 따라 소모품을 교체합니다.



### 교체 소모품의 모델 번호

- Canon Toner Cartridge 047
- Canon Drum Cartridge 049

Ko

# 부록

## 중요 안전 지침

본 설명서는 설치 및 전원 공급 장치에 대한 경고 및 주의사항만을 다룹니다. 사용자 안내서에 기술된 "중요 안전 지침" 또한 반드시 읽으십시오.

### ⚠경고

잘못 취급했을 경우에 생명을 잃거나 부상을 입을 우려가 있는 작업에 대한 경고사항이 설명되어 있습니다. 본 기기를 안전하게 사용하기 위하여 반드시 경고사항을 준수하십시오.

### ⚠주의

잘못 취급했을 경우에 부상을 입을 우려가 있는 주의사항을 나타냅니다. 본 기기를 안전하게 사용하기 위하여 반드시 주의사항을 준수하십시오.

### 🔍중요

조작상의 요구사항 및 제한사항을 나타냅니다. 기기를 올바르게 조작하고 기기 손상 또는 재산 손실을 방지하기 위하여 이 항목을 주의 깊게 읽으십시오.

### 설치

본 기기를 안전하고 손쉽게 사용하려면 다음 예방 조치를 주의 깊게 읽고 적합한 장소에 기기를 설치하십시오.

### ⚠경고

**화재나 감전의 위험이 있는 장소에 설치하지 마십시오.**

- 환기구가 막히는 장소(벽, 천대, 소파, 양탄자 또는 이와 유사한 물건이 너무 가까운 경우)
- 습기나 먼지가 많은 장소
- 직사광선 또는 실외에 노출된 장소
- 온도가 높은 장소
- 화기에 노출된 장소
- 알코올, 페인트 시너 또는 기타 가연성 물질 근처

### 기타 경고

- 본 기기에 승인되지 않은 케이블을 연결하지 마십시오. 화재나 감전의 위험이 있습니다.
- 목걸이나 기타 금속성 물체 또는 액체가 들어 있는 용기를 기기에 올려 놓지 마십시오. 기기 내의 전기 부품에 이물질이 닿으면 화재나 감전이 발생할 수 있습니다.
- 이물질이 기기 내부로 들어간 경우 AC 전원 콘센트에서 전원 플러그를 뽑고 가까운 공인 Canon 대리점에 연락하십시오.

### ⚠주의

**다음 장소에 설치하지 마십시오.** 기기가 떨어져서 부상을 입을 수 있습니다.

- 불안정한 장소
- 진동에 노출된 장소

### 기타 주의 사항

- 본 기기를 운반할 때는 본 설명서의 지침을 따르십시오. 잘못 운반하면 떨어져서 부상을 입을 수 있습니다.
- 본 기기를 설치할 때 기기와 바닥 또는 벽 사이에 손이 끼이지 않도록 주의하십시오. 그런 경우 부상을 입을 수 있습니다.

**환기가 잘 되지 않는 장소는 피하십시오.**

본 기기는 정상적인 사용 중에 미량의 오존 및 기타 가스가 발생합니다. 이렇게 발생된 가스는 인체에 해를 끼치지 않습니다. 하지만 환기가 잘 되지 않는 실내에서 기기를 오랫동안 사용하거나 가동할 경우 오존 등의 영향이 커질 수 있습니다. 편안한 작업 환경을 유지하기 위해 환기가 잘 되는 장소에서 기기를 가동할 것을 권장합니다. 또한 기기에서 발생하는 물질에 사람이 노출될 수 있는 위치 역시 피해야 합니다.

### 전원 공급 장치

### ⚠경고

- 지정된 전압 요건을 충족하는 전원 공급 장치만 사용하십시오. 그렇지 않으면 화재나 감전이 발생할 수 있습니다.
- 제공된 전원 코드 이외의 다른 전원 코드를 사용하지 마십시오. 화재나 감전이 발생할 수 있습니다.
- 동봉된 전원 코드는 본 기기에 사용하도록 제작되었습니다. 해당 전원 코드를 다른 기기에 연결하지 마십시오.
- 전원 코드를 변형시키거나 무리하게 당기거나 그 외에 전원 코드가 손상될 수 있는 작업을 하지 마십시오. 전원 코드 위에 무거운 물체를 올려놓지 마십시오. 전원 코드가 손상되면 화재나 감전이 발생할 수 있습니다.
- 젖은 손으로 전원 플러그를 꽂거나 빼지 마십시오. 감전이 발생할 수 있습니다.
- 연장 코드가 멀티탭을 기기에 사용하지 마십시오. 화재나 감전이 발생할 수 있습니다.
- 전원 코드를 강거나 매듭짓지 마십시오. 화재나 감전이 발생할 수 있습니다.
- 전원 플러그를 AC 전원 콘센트에 단단히 끼우십시오. 그렇지 않으면 화재나 감전이 발생할 수 있습니다.
- 뇌우가 내릴 때는 AC 전원 콘센트에서 전원 플러그를 완전히 뽑으십시오. 그렇지 않으면 화재나 감전이 발생할 수 있습니다.
- 기기의 전원 공급 장치가 안전하고 전압이 일정인지 확인하십시오.
- 전원 코드를 열원에서 멀리하십시오. 그렇지 않으면 전원 코드 코팅이 녹아 화재나 감전이 발생할 수 있습니다.

### 다음 상황을 피하십시오.

- 전원 코드의 연결부에 과도한 압력이 가해질 경우 전원 코드가 손상되거나 기기 내의 배선이 분리될 수 있으며 이로 인해 화재가 발생할 수 있습니다.
- 전원 코드를 빈번하게 연결했다 분리하는 경우
- 전원 코드가 발에 걸리는 경우
- 전원 코드가 연결부 가까이에서 구부러져 있고 전원 콘센트에 연결부에 지속적인 압력이 가해지는 경우
- 전원 플러그에 과도한 힘이 가해지는 경우

### ⚠주의

비상시에 플러그를 쉽게 뽑을 수 있도록 기기를 전원 콘센트 가까이에 설치하고 전원 플러그 주위에 충분한 공간을 둡니다.

### 취급

### ⚠주의 레이저 안전성

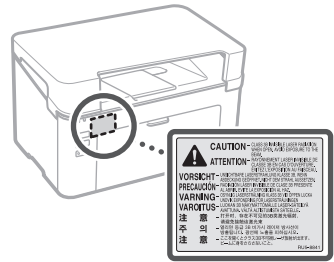
본 제품은 IEC60825-1:2014 및 EN60825-1:2014 기준, 1등급 레이저 제품으로 인증되었습니다.

CLASS 1 LASER PRODUCT  
LASER KLASSE 1  
APPAREIL À LASER DE CLASSE 1  
APPARECCHIO LASER DI CLASSE 1  
PRODUCTO LÁSER DE CLASE 1  
APARELHO A LASER DE CLASSE 1  
LUOKAN 1 LASER-TUOTE  
LASERPRODUKT KLASSE 1

레이저 광선은 인체에 유해할 수 있습니다. 제품 내부에서 방출되는 방사선은 보호 하우징 및 외부 커버 내에서 완전히 차폐되므로 사용자 작동 시에는 레이저 광선이 기기에서 새어 나오지 않습니다. 안전을 위해 다음 설명과 지침을 읽으십시오.

- 본 기기의 설명서에 언급된 커버 이외의 다른 커버는 열지 마십시오.
- 레이저 광선이 새어 나와 눈을 쏘게 되면 시력이 손상될 수 있습니다.
- 본 설명서에서 지정한 내용과 다르게 절차를 수행하거나 제어 또는 조정할 경우 유해한 레이저 방사선이 방출될 수 있습니다.

### 레이저 안전 라벨



### 안전 관련 기호

- | 전원 스위치: "켜짐" 위치
  - 전원 스위치: "꺼짐" 위치
  - ⏻ 전원 스위치: "대기" 위치
  - ⌚ 푸시-푸시 스위치 ■ "켜짐" ■ "꺼짐"
  - ⚡ 보호 접지 단자
- 내부에 위험한 전압이 흐르고 있습니다.  
⚠ 설명서에 명시된 커버 이외의 다른 커버는 열지 마십시오.
- ⚠ 주의: 표면이 뜨겁습니다. 만지지 마십시오.
- 📦 2등급 장비
- ⚠ 동작 부분: 동작 부분에 신체 부위가 닿지 않도록 하십시오.
- ⚠ 주의: 감전이 일어날 수 있습니다. 전원 콘센트에서 전원 플러그를 제거하십시오.

날카로운 모서리가 있습니다. 신체를 날카로운 모서리에 가까이 두지 마십시오.

- 위에 표시된 기호 중 일부는 제품에 따라 부착되지 않을 수 있습니다.

# 소모품

## ⚠경고

사용한 토너 카트리지를 볼 속에 넣지 마십시오. 또한 토너 카트리지가 용지를 화기 근처에 보관하지 마십시오. 토너나 용지에 불이 붙어 화상을 입거나 화재가 발생할 수 있습니다.

# 주의 사항

## 제품명

안전 규정에 따라 제품의 명칭을 등록해야 합니다.

본 제품이 판매되는 일부 지역에서는 다음 괄호 ( ) 안의 명칭이 대신 등록될 수 있습니다.

imageCLASS LBP112(F173000)

- 이 장치는 이동전화, Wi-Fi 또는 블루투스 장치 등 무선통신장치와 매우 근접한 장소에서 작동할 경우 오동작을 일으킬 가능성이 있습니다

## 면책 조항

- 이 문서의 내용은 예고 없이 변경될 수 있습니다.
- CANON INC.는 별도로 명시하지 않는 한 본 문서와 관련하여 시정성, 특정 사용 목적의 적합성 또는 불침묵에 대한 보증을 포함하여(그러나 이에 국한하지 않음) 기타 어떤 명시적, 묵시적 보장도 하지 않습니다. CANON INC.는 이 문서의 사용으로 인해 발생하는 여하간의 직접 손해, 간접 손해 또는 필연적 손해 또는 기타 손해나 비용 손해에 대하여 책임지지 않습니다.

# 설명서 정보

## 상표

Mac은 Apple Inc.의 상표입니다. Microsoft, Windows, Windows Vista, Windows Server, Internet Explorer, Excel 및 PowerPoint는 미국 및/또는 다른 나라에 등록된 Microsoft Corporation의 상표 또는 등록 상표입니다. 이곳에 나열된 다른 제품과 회사 이름은 해당 회사의 상표입니다.

V\_170519

# 제3자 소프트웨어

본 Canon 제품(이하 "제품"으로 통칭)에는 제3자 소프트웨어 모듈이 포함되어 있습니다. 이러한 소프트웨어 모듈(이하 "소프트웨어"로 통칭)의 업데이트를 포함하여 해당 소프트웨어 모듈의 사용과 배포는 아래의 사용 허가 조건 (1) ~ (9)를 따릅니다.

- (1) 본 소프트웨어를 포함하여 이 제품 이 임의의 국가로 출하, 양도 또는 수출되는 경우, 관련 국가의 모든 적용 가능한 수출 통제 법률, 제한 또는 규정을 준수할 것에 동의합니다.

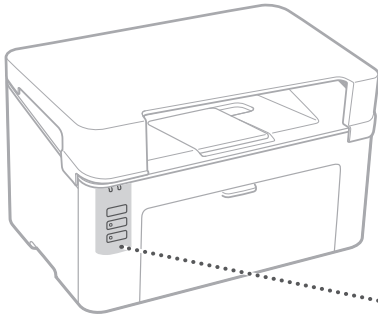
- (2) 소프트웨어의 저작권자는 해당 소프트웨어의 제목, 소유권 및 지적 재산권을 모두 보유하고 있습니다. 이곳에 명시적으로 제공되지 않는 한, 소프트웨어 저작권자의 모든 지적 재산권에 대해 소프트웨어 저작권자는 어떠한 사용 허가 또는 권리도 사용자에게 명시적 또는 묵시적으로 부여하거나 전달하지 않습니다.
- (3) 소프트웨어는 제품과 함께 사용하는 용도로만 사용할 수 있습니다.
- (4) 소프트웨어 저작권자의 사전 서면 동의 없이는 이 소프트웨어를 제3자에게 할당, 재라이센스, 마케팅, 배포 또는 양도할 수 없습니다.
- (5) 상기의 규정에도 불구하고 (a) 제품에 대한 모든 권리와 사용 허가 조건 하의 모든 권리 및 책임을 양수인에게 할당하고, (b) 이 양수인이 모든 관련 조건을 준수할 것에 동의하는 경우에만 본 소프트웨어를 양도할 수 있습니다.
- (6) 소프트웨어의 코드를 디컴파일, 리버스 엔지니어, 디어셈블하거나 사람이 읽을 수 있는 형태로 줄일 수 없습니다.
- (7) 소프트웨어를 수정, 개조, 변환, 임대, 대여 또는 대부하거나 본 소프트웨어를 바탕으로 2차 저작물을 만들 수 없습니다.
- (8) 본 소프트웨어를 제품으로부터 제거하거나 별도의 복사본을 만들 수 없습니다.
- (9) 본 소프트웨어에서 사람이 읽을 수 있는 부분(소스 코드)은 사용 권한이 없습니다.

상기의 규정 (1) ~ (9)에도 불구하고, 본 제품에는 기타 사용 허가 조건과 함께 제공된 제3자 소프트웨어 모듈이 포함되어 있으며 이러한 소프트웨어 모듈은 기타 사용 허가 조건을 따릅니다. 해당 제품 설명서의 부록에 설명된 제3자 소프트웨어 모듈의 기타 사용 허가 조건을 참조하십시오. 본 설명서는 <http://canon.com/oip-manual> 에서 볼 수 있습니다.

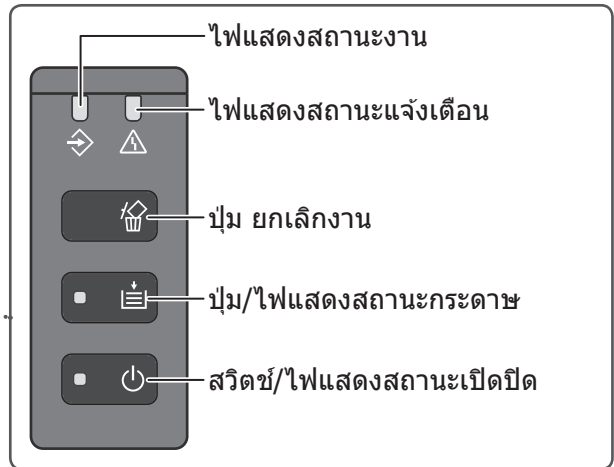
본 제품을 사용하면 모든 적용 가능한 사용 허가 조건에 동의하는 것으로 간주됩니다. 이러한 사용 허가 조건에 동의하지 않는 경우 서비스 담당자에게 문의하십시오.

## เริ่มใช้งานเครื่องพิมพ์

เครื่องพิมพ์



ปุ่มและไฟแสดงสถานะการทำงาน



### หน้าต่างแสดงสถานะของเครื่องพิมพ์



หน้าต่างแสดงสถานะของเครื่องพิมพ์ช่วยให้คุณสามารถทำการตรวจสอบสถานะของเครื่องพิมพ์ จัดการกับฟังก์ชันโปรแกรมอรรถประโยชน์ และระบุการตั้งค่าสำหรับเครื่องพิมพ์ และอื่น ๆ

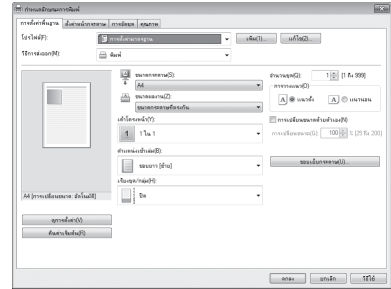
สำหรับรายละเอียด

➔ วิธีใช้หน้าต่างแสดงสถานะของเครื่องพิมพ์



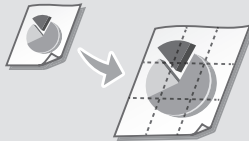
## การพิมพ์

1. เปิดเอกสารเพื่อสั่งพิมพ์ และเลือกฟังก์ชันการพิมพ์ของแอปพลิเคชัน
2. เลือกไดรเวอร์ของเครื่องพิมพ์สำหรับเครื่องพิมพ์ และเลือก [กำหนดลักษณะ] หรือ [คุณสมบัติ]
3. ระบุขนาดหน้ากระดาษ
4. ระบุแหล่งที่มาของกระดาษและชนิดของกระดาษ
5. ระบุการตั้งค่าการพิมพ์ หากจำเป็น
6. เลือก [ตกลง]
7. เลือก [พิมพ์] หรือ [ตกลง]



### การตั้งค่าการพิมพ์ที่มีประโยชน์

- N บน 1
- การพิมพ์แบบเรียงชุด
- การพิมพ์ไปสเดอร์



### สำหรับรายละเอียด

➡ "การพิมพ์" ในคู่มือการใช้งาน

# การโหลดกระดาษ

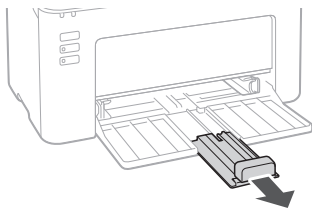
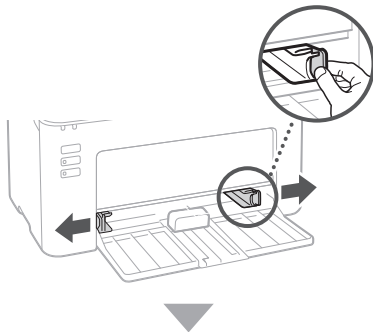
สำหรับรายละเอียด

➔ "การโหลดกระดาษ" ในคู่มือการใช้งาน

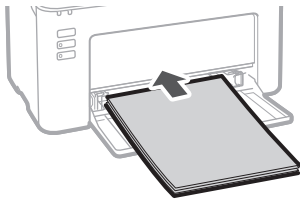
## การโหลดกระดาษในถาดกระดาษ

1 เปิดถาดกระดาษ

2



3



4

คอยดูให้จำนวนกระดาษ  
อยู่ในขีดจำกัดการ  
โหลดที่แนะนำ



5 เปิดฝาครอบบนถาดกระดาษ

# หากมีปัญหาเกิดขึ้น

สำหรับรายละเอียด

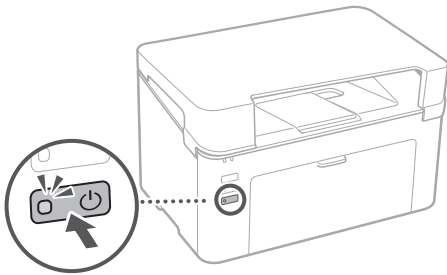
➔ "การบำรุงรักษา" และ "การแก้ไขปัญหา" ในคู่มือการใช้งาน

## เครื่องพิมพ์เหมือนจะไม่ทำงาน

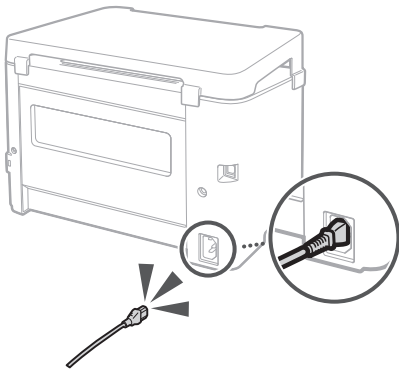
ตรวจสอบรายการต่อไปนี้

- เปิดเครื่องอยู่หรือไม่
- เครื่องพิมพ์ไม่ได้อยู่ในโหมดพักชั่วคราวใช่หรือไม่

หากไฟแสดงสถานะ เปิดปิดไม่ติด ให้กดปุ่มสวิตช์เปิดปิด



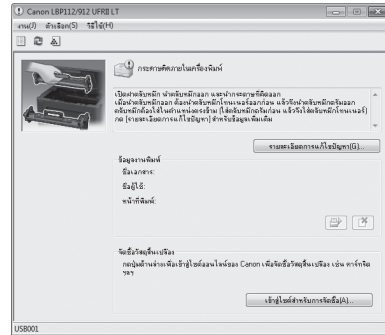
- เชื่อมต่อสายไฟอย่างถูกต้องหรือไม่



หากปัญหายังคงมีอยู่ โปรดดูที่คู่มือการใช้งาน

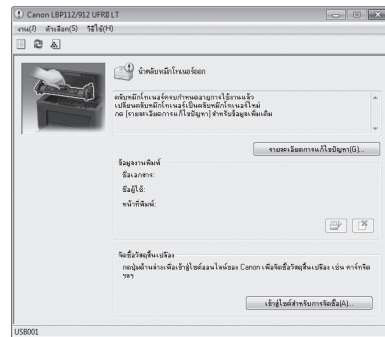
## เกิดอาการกระดาษติดอยู่ภายใน

ทำการดึงกระดาษที่ติดอยู่ในเครื่องออก ตามที่มีข้อความแจ้งเตือนปรากฏอยู่บนหน้าต่างแสดงสถานะของเครื่องพิมพ์



## ทำการเปลี่ยนวัสดุสิ้นเปลือง

ทำการเปลี่ยนวัสดุสิ้นเปลืองเข้าไปแทนที่ ตามที่มีข้อความแจ้งเตือนปรากฏอยู่บนหน้าต่างแสดงสถานะของเครื่องพิมพ์



หมายเลขรุ่นของวัสดุสิ้นเปลืองทดแทน

- Canon Toner Cartridge 047
- Canon Drum Cartridge 049

# ภาคผนวก

## คำแนะนำด้านความปลอดภัยที่สำคัญ

คู่มือนี้จะอธิบายเฉพาะค่าเตือนและข้อควรระวังสำหรับการติดตั้งและแหล่งจ่ายไฟ โปรดอย่าลืมอ่าน "คำแนะนำด้านความปลอดภัยที่สำคัญ" ที่ได้อธิบายไว้ในคู่มือการใช้งานด้วยเป็นที่ยอมรับแล้ว

### ⚠️ คำเตือน

บงอกถึงเครื่องแจ้งเตือนเกี่ยวกับการทำงานที่อาจนำไปสู่การเสียชีวิตหรือการบาดเจ็บต่อบุคคล หากไม่ได้มีการดำเนินการอย่างถูกต้องเพื่อการใช้งานเครื่องพิมพ์อย่างปลอดภัยให้ใส่ใจกับการแจ้งเตือนเหล่านี้ด้วย

### ⚠️ ข้อควรระวัง

บงอกถึงข้อควรระวังเกี่ยวกับการทำงานที่อาจนำไปสู่การเสียชีวิตหรือการบาดเจ็บต่อบุคคลหากไม่ได้มีการดำเนินการอย่างถูกต้องเพื่อการใช้งานเครื่องพิมพ์อย่างปลอดภัยให้ใส่ใจกับการแจ้งเตือนเหล่านี้ด้วย

### 📌 ข้อสำคัญ

บงอกถึงข้อกำหนดและข้อจำกัดในการดำเนินงาน โปรดอย่าลืมอ่านรายการเหล่านี้ อยากรู้เพิ่มเติมเพื่อให้เครื่องพิมพ์ทำงานได้อย่างถูกต้องและหลีกเลี่ยงความเสียหายที่อาจเกิดขึ้นกับเครื่องพิมพ์หรือทรัพย์สินอื่น

### การติดตั้ง

ในการวางเครื่องพิมพ์อย่างปลอดภัยและสะดวกสบาย โปรดอ่านอย่างระมัดระวังในข้อควรระวังต่าง ๆ ต่อไปนี้และจัดวางเครื่องให้อยู่ในตำแหน่งที่เหมาะสม

### ⚠️ คำเตือน

ห้ามวางเครื่องพิมพ์ในสถานที่ที่อาจทำให้เกิดเพลิงไหม้หรือกระแสไฟฟ้าลัดวงจรได้

- ตำแหน่งที่ช่องระบายอากาศถูกปิดกั้น (อยู่ใกล้กับกำแพง เติง โขง พรมหรือวัตถุอื่น ๆ ที่มีลักษณะคล้ายคลึงกัน)
- ตำแหน่งที่มีความชื้นหรือเต็มไปด้วยฝุ่น
- ตำแหน่งที่เปิดโล่งและถูกแสงอาทิตย์โดยตรงหรือพื้นที่กลางแจ้ง
- ตำแหน่งที่มีอุณหภูมิสูง
- ตำแหน่งที่สัมผัสกับไฟฟ้าที่ลุกไหม้
- สถานที่ที่อยู่ใกล้กับแอลกอฮอล์ ทินเนอร์ผสมสีหรือสารไวไฟ

### คำเตือนอื่น ๆ

- ห้ามเชื่อมต่อกับเครื่องพิมพ์ด้วยสายเคเบิลที่ไม่ผ่านการรับรอง การกระทำดังกล่าวอาจทำให้เกิดเพลิงไหม้หรือกระแสไฟฟ้าลัดวงจร
- ห้ามวางสร้อยคอหรือวัสดุที่เป็นโลหะหรือสิ่งบรรจุของเหลวบนเครื่องพิมพ์ หากมีวัสดุแปลกปลอมสัมผัสกับชิ้นส่วนภายในเครื่องพิมพ์ที่มีกระแสไฟฟ้าอยู่ อาจจะทำให้เกิดเพลิงไหม้หรือกระแสไฟฟ้าลัดวงจร
- หากมีวัสดุแปลกปลอมตกลงไปในเครื่องพิมพ์ให้ถอดปลั๊กไฟออกจากเต้าเสียบไฟ AC และติดต่อตัวแทนจำหน่าย Canon ที่ได้รับอนุญาตในพื้นที่ของคุณ

### ⚠️ ข้อควรระวัง

ห้ามทำการวางในตำแหน่งเหล่านี้ เครื่องพิมพ์อาจจะหล่นหรือตกลงมา อาจจะทำให้เกิดการบาดเจ็บขึ้นได้

- ตำแหน่งที่ไม่มั่นคง
- ตำแหน่งที่เปิดโล่งต่อแรงสั่นสะเทือน

### ข้อควรระวังอื่น ๆ

เมื่อทำการยกเครื่องพิมพ์ ให้ทำตามคำแนะนำในคู่มือนี้ หากยกเครื่องพิมพ์อย่างไม่ถูกต้อง เครื่องพิมพ์อาจจะหล่นและทำให้เกิดการบาดเจ็บได้

- เมื่อทำการจัดวางเครื่องพิมพ์ ระวังอย่าให้มีอึดอยู่ระหว่างเครื่องพิมพ์และพื้นหรือผนัง เพราะอาจทำให้เกิดการบาดเจ็บได้

### หลีกเลี่ยงสถานที่ที่การไหลเวียนของอากาศไม่ดี

เครื่องนี้สร้างโอโซนและมลพิษจำนวนเล็กน้อยระหว่างการใช้งานตามปกติ การปล่อยก๊าซเหล่านี้ไม่เป็นอันตรายต่อสุขภาพ อย่างไรก็ตาม อาจสังเกตเห็นได้ในระหว่างการขยายเวลาการใช้งานหรือการผลิตที่ยาวนานในห้องที่ระบายอากาศได้ไม่ดีพอ เพื่อรักษาสุขภาพแวดล้อมในการทำงานที่สะดวกสบาย ขอแนะนำให้ใช้ห้องที่เครื่องพิมพ์สามารถทำงานได้อย่างเหมาะสม หลีกเลี่ยงสถานที่ที่ผู้คนสามารถสัมผัสกับมลพิษที่ปล่อยออกจากเครื่อง

### แหล่งจ่ายไฟ

#### ⚠️ คำเตือน

- ใช้เฉพาะแหล่งจ่ายไฟที่ตรงกับความต้องการแรงดันไฟฟ้าที่ระบุไว้ หากไม่ทำเช่นนั้นแล้ว อาจจะทำให้เกิดเพลิงไหม้หรือกระแสไฟฟ้าลัดวงจร
- ห้ามใช้สายไฟอื่นนอกเหนือจากสายไฟที่จัดไว้ให้ เนื่องจากอาจทำให้เกิดเพลิงไหม้หรือกระแสไฟฟ้าลัดวงจร
- สายไฟที่จัดไว้ให้ มุ่งหมายให้ใช้สำหรับเฉพาะกับเครื่องพิมพ์นี้ อย่านำสายไฟนี้ไปเชื่อมต่อกับอุปกรณ์อื่น
- ห้ามทำการตัดแปลง ตึง ผืนทำให้อ่อน หรือทำการใด ๆ ที่อาจสร้างความเสียหายให้กับสายไฟ ห้ามวางวัตถุหนัก ๆ บนสายไฟ การสร้างความเสียหายให้กับสายไฟอาจทำให้เกิดเพลิงไหม้หรือกระแสไฟฟ้าลัดวงจร
- ห้ามทำการตัดแปลง ตึง ผืนทำให้อ่อน หรือทำการใด ๆ ที่อาจสร้างความเสียหายให้กับสายไฟ ห้ามวางวัตถุหนัก ๆ บนสายไฟ การสร้างความเสียหายให้กับสายไฟอาจทำให้เกิดเพลิงไหม้หรือกระแสไฟฟ้าลัดวงจร
- ห้ามเสียบปลั๊กหรือถอดปลั๊กด้วยมือที่เปียก เนื่องจากอาจทำให้เกิดเพลิงไหม้หรือกระแสไฟฟ้าลัดวงจร
- ห้ามใช้สายพ่วงหรือปลั๊กต่อกับกับเครื่องพิมพ์นี้ การกระทำดังกล่าวอาจทำให้เกิดเพลิงไหม้หรือกระแสไฟฟ้าลัดวงจร
- ห้ามทำการพันสายไฟหรือผูกติดกับมือ เนื่องจากอาจทำให้เกิดเพลิงไหม้หรือกระแสไฟฟ้าลัดวงจร
- เสียบปลั๊กไฟเข้ากับเต้าเสียบไฟ AC ให้เรียบร้อย หากไม่ทำเช่นนั้นแล้วอาจจะทำให้เกิดเพลิงไหม้หรือกระแสไฟฟ้าลัดวงจร ถอดสายไฟออกจากเต้าเสียบไฟ AC ให้เรียบร้อย ในระหว่างที่มีพายุฝนฟ้าคะนอง หากไม่ทำเช่นนั้นแล้วอาจจะทำให้เกิดเพลิงไหม้หรือกระแสไฟฟ้าลัดวงจรหรือสร้างความเสียหายให้กับเครื่องพิมพ์ของคุณ
- ให้แน่ใจว่าแหล่งจ่ายไฟสำหรับเครื่องพิมพ์นี้ปลอดภัย และมีแรงดันไฟฟ้าที่เสถียร
- เก็บสายไฟให้ห่างจากแหล่งความร้อน หากไม่ทำเช่นนั้นแล้วอาจจะทำให้เปลือกรวมสายไฟ หลอมละลาย ทำให้เกิดเพลิงไหม้หรือกระแสไฟฟ้าลัดวงจร

### หลีกเลี่ยงสถานการณ์ดังต่อไปนี้:

หากมีความเครียดมากเกินไปสำหรับส่วนที่เชื่อมต่อของสายไฟ อาจจะทำให้สายไฟหรือสายไฟภายในเครื่องพิมพ์อาจขาด นี้ อาจจะทำให้เกิดเพลิงไหม้ได้

- ทำการเชื่อมต่อและการปลดการเชื่อมต่อสายไฟเป็นระยะ ๆ
- การเสียดสายไฟ
- สายไฟจะถูกพันไว้ใกล้กับชิ้นส่วนที่ใช้เชื่อมต่อและความเครียดเริ่มสะสมอยู่ในเต้าเสียบไฟ และความเครียดที่สะสมอย่างต่อเนื่องถูกนำมาใช้กับเต้าเสียบไฟหรือส่วนที่เชื่อมต่อ
- การใช้กำลังที่มากเกินไปกับปลั๊กไฟ

### ⚠️ ข้อควรระวัง

การติดตั้งเครื่องพิมพ์นี้ใกล้กับเต้าเสียบและเว้นช่องว่างรอบ ๆ ปลั๊กเสียบให้พอเพียง เพื่อให้อากาศไหลเวียน จะสามารถทำการถอดปลั๊กออกได้อย่างสะดวก

### การจัดการ

#### ⚠️ ข้อควรระวัง

#### ความปลอดภัยของเลเซอร์

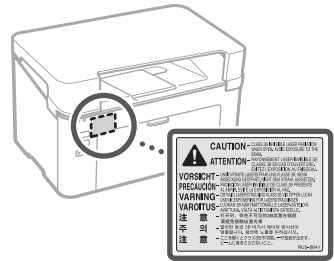
ผลิตภัณฑ์นี้ได้รับการยืนยันว่าเป็นผลิตภัณฑ์ที่เกี่ยวข้องกับเลเซอร์คลาส 1 ใน IEC60825-1:2014 และ EN60825-1:2014

CLASS 1 LASER PRODUCT  
LASER KLASSE 1  
APPAREIL À LASER DE CLASSE 1  
APPARECCHIO LASER DI CLASSE 1  
PRODUCTO LÁSER DE CLASE 1  
APARELHO A LASER DE CLASSE 1  
LUOKAN 1 LASER-TUOTE  
LASERPRODUKT KLASSE 1

ลำแสงเลเซอร์สามารถทำอันตรายให้กับร่างกายของมนุษย์ได้ เนื่องจากการแผ่รังสีที่ปล่อยออกมาภายในตัวผลิตภัณฑ์จะถูกกักไว้ให้อยู่ภายในตัวป้องกันและฝาครอบภายนอกอย่างสมบูรณ์ ลำแสงเลเซอร์จึงไม่สามารถหลุดออกจากตัวเครื่องได้ในระหว่างขั้นตอนการใช้งานของผู้ใช้ อ่านหมายเหตุและคำแนะนำต่อไปเพื่อความปลอดภัย

- ห้ามเปิดฝาครอบอื่นนอกเหนือจากที่แนะนำในคู่มือสำหรับเครื่องพิมพ์นี้
- หากลำแสงเลเซอร์สามารถหลุดรอดออกมาได้แล้วควรหลบเข้าบังดวงตาของคุณ แสงดังกล่าวอาจสร้างความเสียหายให้กับดวงตาของคุณได้
- การใช้งานการควบคุม การปรับ หรือประสิทธิภาพของขั้นตอนอื่น ๆ ที่นอกเหนือไปจากที่ได้อธิบายไว้ในคู่มือนี้ อาจทำให้เกิดการได้รับรังสีที่อาจเป็นอันตรายได้

#### ฉลากความปลอดภัยของเลเซอร์



#### สัญลักษณ์ที่เกี่ยวข้องกับความปลอดภัย

- | สวิตช์เปิดปิด: อยู่ที่ตำแหน่ง "เปิด"
- สวิตช์เปิดปิด: อยู่ที่ตำแหน่ง "ปิด"
- ⏻ สวิตช์เปิดปิด: อยู่ที่ตำแหน่ง "เตรียมพร้อม"
- ① สวิตช์ปุ่มกด: ■ "เปิด" ■ "ปิด"
- ⊕ ขั้วต่อสายดิน
- ⚠️ มีแรงดันไฟฟ้าที่อันตรายอยู่ภายใน อย่านำเปิดฝาครอบอื่นที่นอกเหนือไปจากที่แนะนำไว้
- ⚠️ ระวัง: มีพื้นผิวที่ร้อน ห้ามแตะหรือสัมผัส
- ☑️ อุปกรณ์คลาส II
- ⚠️ มีชิ้นส่วนที่เคลื่อนไหวได้: นำตัวเองออกห่างจากชิ้นส่วนที่เคลื่อนไหวได้
- ⚠️ ข้อควรระวัง: อาจเกิดไฟฟ้าลัดวงจร ถอดปลั๊กไฟทั้งหมดออกจากเต้าไฟฟ้
- ⚠️ มีขอบที่แหลมคม ให้ส่วนของร่างกายอยู่ห่างจากขอบที่คม
- สัญลักษณ์บางตัวที่แสดงให้เห็นอยู่ด้านบนอาจจะไม่ได้ติดอยู่กับผลิตภัณฑ์ ขึ้นอยู่กับผลิตภัณฑ์นั้น ๆ



# วัสดุสิ้นเปลือง

## คำเตือน

ห้ามทิ้งดรัมหมึกที่ใช้แล้วลงไปในปลั๊กไฟ รวมถึงห้ามทำการเก็บดรัมหมึกหรือกระดาษไว้ในสถานที่ที่เปิดโล่งอยู่ใกล้กับปลั๊กไฟ การทำเช่นนี้อาจจะทำให้ดรัมหมึกหรือกระดาษติดไฟขึ้นมา และก่อให้เกิดการไหม้หรือเพลิงไหม้ได้

# ข้อควรสังเกต

## ข้อผลิตภัณฑ์

ข้อกำหนดด้านความปลอดภัยที่ต้องมีการจดทะเบียนชื่อผลิตภัณฑ์

ในบางภูมิภาคที่สินค้ามีการวางขายในห้องตลาด ชื่อต้องอยู่ในวงเล็บ ( ) อาจจะมีการจดทะเบียนแทน

imageCLASS LBP112 (F173000)

## ข้อกำหนด EMC ตามข้อเสนอแนะของ EC

อุปกรณ์นี้สอดคล้องกับข้อกำหนด EMC ที่จำเป็นตามข้อเสนอแนะของ EC เราขอประกาศว่าผลิตภัณฑ์นี้เป็นไปตามข้อกำหนด EMC ตามข้อเสนอแนะของ EC ที่กำลังไฟ 230 V, 50 HZ แม้ว่าอัตราแรงดันไฟฟ้าขาเข้าของผลิตภัณฑ์คือ 220 ถึง 240 V, 50/60 HZ การใช้สายเคเบิลที่มีฉนวนเป็นสิ่งจำเป็นเพื่อให้สอดคล้องกับข้อกำหนดทางเทคนิค EMC ตามข้อเสนอแนะของ EC

## การปฏิเสธความรับผิดชอบ

- ข้อมูลในเอกสารนี้สามารถเปลี่ยนแปลงได้โดยไม่ต้องแจ้งให้ทราบ
- บริษัท CANON INC. ไม่ขอรับประกันใด ๆ เกี่ยวกับข้อมูลในเอกสารฉบับนี้ไม่ว่าจะระบุไว้อย่างชัดเจนหรือโดยนัยในทุกกรณี ซึ่งนอกเหนือจากที่ระบุไว้ในที่นี้ และมีได้จำกัดอยู่กับการรับประกันด้านการตลาด โอกาสด้านการค้า ความเหมาะสมในการนำไปใช้งานตามวัตถุประสงค์เฉพาะ หรือการไม่ละเมิดสิทธิใด ๆ บริษัท CANON INC. จะไม่ขอรับผิดชอบเกี่ยวกับความเสียหายอันเป็นเหตุบังเอิญหรือเป็นผลสืบเนื่องใด ๆ ไม่ว่าทางตรงหรือทางอ้อม หรือความสูญเสียหรือค่าใช้จ่ายใด ๆ อันเป็นผลมาจากการใช้ข้อมูลในเอกสารนี้

# เกี่ยวกับคู่มือการใช้งานนี้

## เครื่องหมายการค้า

Mac เป็นเครื่องหมายการค้าของบริษัท Apple Inc. Microsoft, Windows, Windows Vista, Windows Server, Internet Explorer Excel และ PowerPoint เป็นเครื่องหมายการค้าของทะเบียนหรือเครื่องหมายการค้าของบริษัท Microsoft Corporation ในประเทศสหรัฐอเมริกา และ/หรือในประเทศอื่น ๆ ผลิตภัณฑ์อื่น ๆ และชื่อบริษัทในที่นี้จะเป็นเครื่องหมายการค้าของเจ้าของบริษัทหรือผลิตภัณฑ์นั้น ๆ

# ซอฟต์แวร์จากบุคคลที่สาม

ผลิตภัณฑ์ของบริษัท Canon ("ผลิตภัณฑ์") รวมถึงโมดูลซอฟต์แวร์จากบุคคลที่สาม การใช้และแจกจ่ายโมดูลซอฟต์แวร์เหล่านี้ รวมถึงการอัปเดตของโมดูลซอฟต์แวร์ดังกล่าว (เรียกโดยรวม ๆ ว่า "ซอฟต์แวร์") จะอยู่ภายใต้เงื่อนไขการอนุญาต

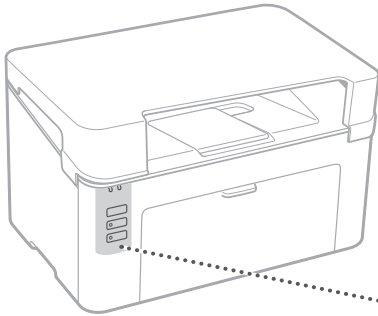
- (1) ถึง (9) ด้านล่างนี้
- (1) คุณยอมรับว่าคุณจะปฏิบัติตามกฎหมายการควบคุมการส่งออก ข้อจำกัดหรือข้อบังคับในการควบคุมการส่งออกของประเทศที่เกี่ยวข้องในกรณีที่ "ผลิตภัณฑ์" ซึ่งรวมถึง "ซอฟต์แวร์" นี้ได้รับการจัดส่ง ถ่ายโอนหรือส่งออกไปยังประเทศใด ๆ
- (2) ผู้ถือสิทธิ์ของ "ซอฟต์แวร์" จะยังคงไว้ซึ่งความเคารพต่อกรรมสิทธิ์และสิทธิในทรัพย์สินทางปัญญาทั้งหมดในและต่อ "ซอฟต์แวร์" เว้นแต่จะระบุไว้อย่างชัดเจนในเอกสารนี้ จะไม่มีการอนุญาตหรือสิทธิโดยชัดแจ้งหรือโดยนัยใด ๆ โดยนัยดังกล่าวได้รับการถ่ายทอดหรือมอบสิทธิ์โดยผู้ถือสิทธิ์ของ "ซอฟต์แวร์" ให้แก่คุณสำหรับทรัพย์สินทางปัญญาของผู้ถือสิทธิ์ของ "ซอฟต์แวร์" ดังกล่าว
- (3) คุณสามารถใช้ "ซอฟต์แวร์" นี้เพื่อใช้กับ "ผลิตภัณฑ์" ได้เท่านั้น
- (4) คุณไม่สามารถถ่วงมอบหมาย อนุญาตให้ใช้งานต่อ วางจำหน่าย เผยแพร่ หรือถ่ายโอน "ซอฟต์แวร์" ให้แก่บุคคลที่สามโดยไม่ได้รับความยินยอมเป็นลายลักษณ์อักษรล่วงหน้าจากผู้ถือสิทธิ์ของ "ซอฟต์แวร์" ดังกล่าว
- (5) คุณสามารถทำการถ่ายโอน "ซอฟต์แวร์" ได้เฉพาะต่อเมื่อ (ก) คุณให้สิทธิ์ทั้งหมดของคุณกับ "ผลิตภัณฑ์" และสิทธิ์และข้อผูกพันทั้งหมดภายใต้เงื่อนไขการอนุญาตให้แก่ผู้รับโอนและ (ข) ผู้รับโอนดังกล่าวยินยอมที่จะผูกพันตามเงื่อนไขทั้งหมดเหล่านี้
- (6) คุณจะต้องไม่คอมไพล์ย้อนกลับ ทำวิศวกรรมย้อนกลับ ถอดแยกหรือลดโค้ดของ "ซอฟต์แวร์" ในลักษณะอื่นใดในรูปแบบที่มนุษย์สามารถอ่านได้
- (7) คุณไม่สามารถทำการปรับเปลี่ยน ดัดแปลง แก้ไข หรือให้เข้า หรือให้ยืม "ซอฟต์แวร์" หรือสร้างผลงานลอกเลียนแบบซึ่งอ้างอิงมาจาก "ซอฟต์แวร์"
- (8) คุณไม่มีสิทธิ์ในการลบหรือทำลายเอา "ซอฟต์แวร์" แยกต่างหากจาก "ผลิตภัณฑ์"
- (9) ส่วนของรูปแบบที่มนุษย์สามารถอ่านได้ (ซอร์สโค้ด) ของ "ซอฟต์แวร์" คุณจะไม่ได้สิทธิ์ในส่วนดังกล่าว

อย่างไรก็ตาม จากข้อ (1) ถึง (9) ด้านบน "ผลิตภัณฑ์" รวมถึงโมดูลซอฟต์แวร์ของบุคคลที่สามซึ่งมาพร้อมกับเงื่อนไขการอนุญาตใช้งานอื่น ๆ และโมดูลซอฟต์แวร์เหล่านี้ อยู่ภายใต้เงื่อนไขการอนุญาตอื่น ๆ โปรดดูเงื่อนไขการอนุญาตให้ใช้สิทธิ์ของโมดูลซอฟต์แวร์อื่น ๆ ที่อธิบายไว้ในภาคผนวกคู่มือสำหรับ "ผลิตภัณฑ์" ที่เกี่ยวข้องของคู่มือนี้อยู่ที่ <http://canon.com/oip-manual> ด้วยการใช้ "ผลิตภัณฑ์" จะถือว่า คุณได้ยอมรับเงื่อนไขในอนุญาตทั้งหมดที่เกี่ยวข้องแล้ว หากคุณไม่ยอมรับเงื่อนไขการอนุญาตให้ใช้สิทธิ์เหล่านี้ โปรดติดต่อตัวแทนบริการของคุณ

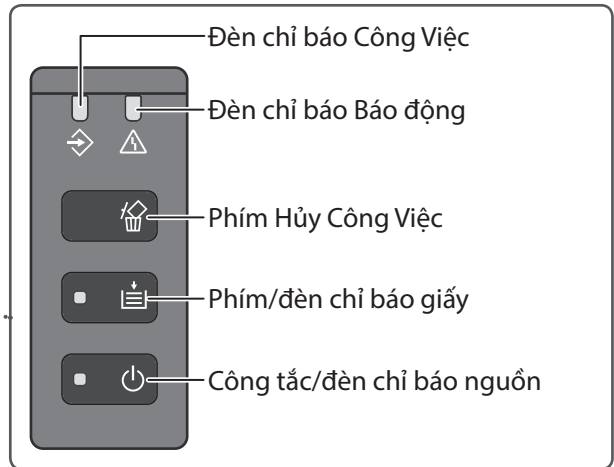
V\_170511

## Bắt đầu Vận hành Máy

Máy



Các phím và Chỉ báo



### Cửa Sổ Tình Trạng Máy In



Cửa Sổ Tình Trạng Máy In cho phép bạn kiểm tra tình trạng máy in, thực hiện các chức năng tiện ích và quy định các cài đặt cho máy in, v.v...

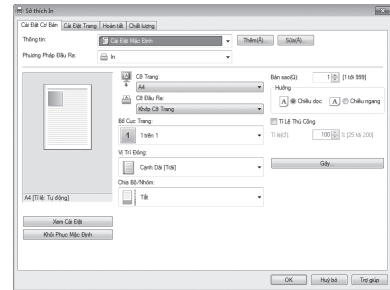
Để biết chi tiết

→ Trợ giúp Cửa Sổ Tình Trạng Máy In



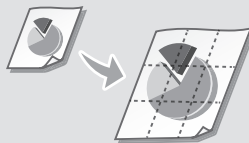
## In

1. Mở tài liệu cần in và chọn chức năng in trong ứng dụng.
2. Chọn trình điều khiển máy in cho máy và chọn [Preferences] (Sở thích) hoặc [Properties] (Thuộc tính).
3. Đặt khổ giấy.
4. Đặt nguồn giấy và loại giấy.
5. Đặt các cài đặt in, nếu cần.
6. Chọn [OK].
7. Chọn [Print] (In) hoặc [OK].



### Các cài đặt in hữu ích

- N trên 1 tờ
- In có sắp xếp
- In Áp phích



### Để biết chi tiết

➔ "In ấn" trong Hướng dẫn người dùng

# Nạp giấy

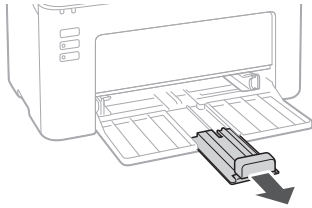
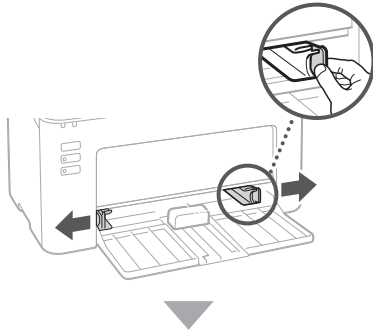
Để biết chi tiết

→ "Nạp giấy" trong Hướng dẫn người dùng

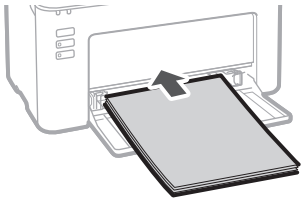
## Nạp giấy vào Ngăn giấy

1 Mở ngăn giấy.

2



3



4

Đảm bảo chống giấy nằm trong giới hạn nạp giấy.



5 Đậy nắp ngăn giấy.

# Nếu có sự cố xảy ra

Để biết chi tiết

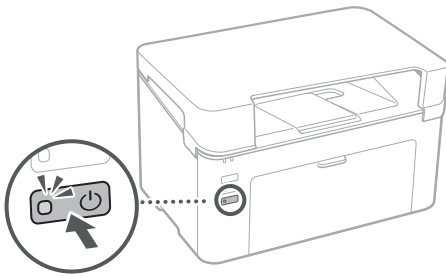
➔ "Bảo dưỡng" và "Xử lý Sự cố" trong Hướng dẫn người dùng

## Máy dường như không hoạt động

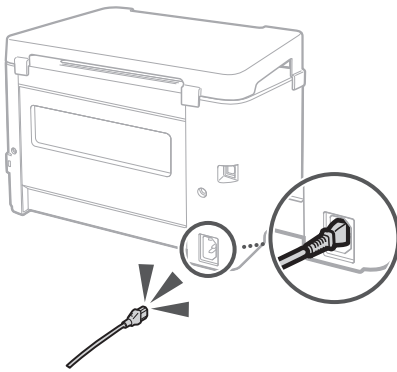
Hãy kiểm tra những điều sau.

- Nguồn đã BẬT chưa?
- Máy đã thoát khỏi chế độ ngủ hay chưa?

Nếu đèn chỉ báo nguồn không sáng, vui lòng nhấn công tắc nguồn.



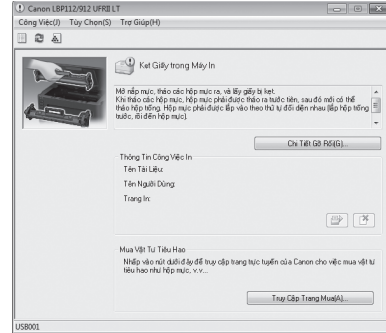
- Dây nguồn đã kết nối đúng cách chưa?



Nếu vấn đề tiếp diễn, vui lòng xem Hướng dẫn người dùng.

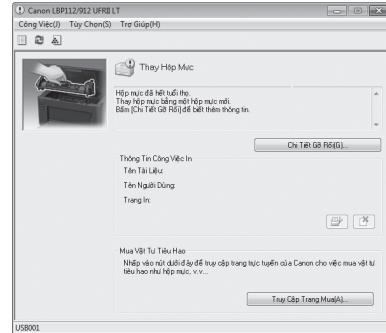
## Đã xảy ra lỗi kẹt giấy

Loại bỏ kẹt giấy theo thông báo hiển thị trong Cửa Sổ Tình Trạng Máy In.



## Thay thế các sản phẩm tiêu hao

Thay thế các sản phẩm tiêu hao theo thông báo hiển thị trong Cửa Sổ Tình Trạng Máy In.



### Số hiệu sản phẩm tiêu hao thay thế

- Canon Toner Cartridge 047
- Canon Drum Cartridge 049

# Phụ lục

## Các Chỉ dẫn An toàn Quan trọng

Hướng dẫn này chỉ mô tả các cảnh báo và thận trọng dành cho lắp đặt và nguồn điện cung cấp. Hãy đảm bảo rằng bạn cũng đã đọc "Các chỉ dẫn An toàn Quan trọng" được mô tả trong Hướng dẫn người dùng.

### ⚠ CẢNH BÁO

Cho biết cảnh báo về các thao tác có thể dẫn đến tử vong hoặc chấn thương nếu không thực hiện đúng cách. Để sử dụng máy một cách an toàn, hãy luôn chú ý đến những cảnh báo này.

### ⚠ THẬN TRỌNG

Cho biết biện pháp thận trọng về các thao tác có thể dẫn đến tử vong hoặc chấn thương nếu không thực hiện đúng cách. Để sử dụng máy một cách an toàn, hãy luôn chú ý đến những biện pháp thận trọng này.

### 🛑 QUAN TRỌNG

Cho biết các giới hạn và yêu cầu vận hành. Hãy đảm bảo rằng bạn đọc các mục này một cách cẩn thận để vận hành máy chính xác và tránh làm hỏng máy hoặc tài sản.

### Lắp đặt

Để sử dụng máy này một cách an toàn và tiện lợi, vui lòng đọc kỹ các biện pháp thận trọng sau và lắp đặt máy ở vị trí thích hợp.

### ⚠ CẢNH BÁO

**Không lắp đặt máy ở vị trí có thể gây cháy nổ hoặc giật điện**

- Vị trí mà khe thông khí bị chặn (quá gần tường, giường, ghế sofa, thảm, hoặc các vật tương tự)
- Vị trí ẩm ướt hoặc bụi
- Vị trí tiếp xúc trực tiếp với ánh nắng mặt trời hoặc vị trí ở ngoài trời
- Vị trí có nhiệt độ cao
- Vị trí dễ tiếp xúc với ngọn lửa
- Gần chất cồn, dung môi sơn hoặc các chất dễ cháy khác

### Cảnh báo khác

- Không kết nối với cáp không được phê chuẩn cho máy này. Làm như vậy có thể gây cháy nổ hoặc giật điện.
- Không đặt vòng cổ và các vật kim loại khác hoặc vật chứa chất lỏng lên trên máy. Nếu có vật lạ bên ngoài tiếp xúc với các bộ phận điện bên trong máy, có thể gây cháy nổ hoặc giật điện.
- Nếu có bất kỳ vật lạ nào rơi vào máy, hãy rút phích cắm ra khỏi ổ cắm điện AC và liên hệ với đại lý được Canon ủy quyền tại địa phương của bạn.

### ⚠ THẬN TRỌNG

**Không đặt tại các vị trí sau**

- Máy có thể bị đổ hoặc rơi, dẫn đến thương tích.
- Vị trí không chắc chắn
- Vị trí dễ bị rung lắc

### Thận trọng khác

- Khi mang vác máy, hãy làm theo các chỉ dẫn trong Hướng dẫn sử dụng này. Nếu mang vác không đúng cách, máy có thể bị rơi, gây ra thương tích.
- Khi lắp đặt máy, hãy cẩn thận để không bị kẹt tay vào máy và sàn nhà hoặc tường. Làm như vậy có thể dẫn đến thương tích.

### Tránh những nơi thông khí kém

Máy sẽ tạo ra một lượng nhỏ khí ozone và khí thải khác trong quá trình sử dụng thông thường. Các khí thải này không gây hại cho sức khỏe. Tuy nhiên, có thể nhận thấy rõ các khí này nếu sử dụng thiết bị trong một thời gian dài hoặc vận hành liên tục trong phòng thông khí kém. Để duy trì môi trường làm việc thoải mái, nên vận hành máy tại phòng được thông khí thích hợp. Ngoài ra cũng cần tránh những vị trí mà mọi người dễ tiếp xúc với khí thải từ máy.

### Bộ nguồn

#### ⚠ CẢNH BÁO

- Chỉ sử dụng bộ nguồn đáp ứng yêu cầu điện áp được chỉ định. Nếu không có thể gây cháy nổ hoặc giật điện.
- Không sử dụng dây nguồn khác với dây được cung cấp, vì điều này có thể gây cháy nổ hoặc giật điện.
- Dây nguồn được cung cấp được dùng riêng cho máy này. Không nối dây nguồn vào các thiết bị khác.
- Không chỉnh sửa, kéo, gấp mạnh, hoặc thực hiện bất kỳ hành động nào khác có thể làm hỏng dây nguồn. Không đặt các vật nặng lên dây nguồn. Làm hư hỏng dây nguồn có thể gây cháy nổ hoặc giật điện.
- Không cầm hoặc rút phích cắm điện bằng tay ướt, vì điều này có thể dẫn đến giật điện.
- Không sử dụng dây điện nối dài hoặc ổ cắm điện có nhiều khe cắm với máy. Làm như vậy có thể gây cháy nổ hoặc giật điện.
- Không quấn hoặc chằng nút dây nguồn, vì điều này có thể gây cháy nổ hoặc giật điện.
- Cắm phích cắm sâu vào ổ cắm điện AC. Nếu không có thể gây cháy nổ hoặc giật điện.
- Rút phích cắm ra khỏi ổ cắm điện AC khi có sấm sét. Nếu không có thể gây cháy nổ, giật điện, hoặc gây hư hỏng máy.
- Hãy đảm bảo rằng nguồn điện cấp cho máy an toàn và có điện áp ổn định.
- Hãy để dây điện cách xa nguồn nhiệt, nếu không, lớp vỏ dây điện có thể bị chảy, gây cháy nổ hoặc giật điện.

### Vui lòng tránh các trường hợp sau:

Nếu phân kết nối của dây nguồn bị căng quá mức, có thể làm hỏng dây nguồn hoặc làm đứt dây điện bên trong máy. Điều này có thể gây cháy nổ.

- Thường xuyên cầm và rút dây nguồn.
- Vấp vào dây nguồn.
- Dây nguồn bị gấp gần phân kết nối và ổ cắm điện hoặc phân kết nối liên tục bị kéo căng.
- Tác động lực quá mạnh lên phích cắm điện.

#### ⚠ THẬN TRỌNG

Lắp đặt máy gần ổ cắm điện và để không gian xung quanh đủ rộng để có thể dễ dàng rút phích cắm trong tình huống khẩn cấp.

### Cách xử lý

#### ⚠ THẬN TRỌNG

**An toàn laser**

Máy này được phân loại là sản phẩm laser Loại 1 theo tiêu chuẩn IEC60825-1:2014 và EN60825-1:2014.

CLASS 1 LASER PRODUCT

LASER KLASSE 1

APPAREIL À LASER DE CLASSE 1

APPARECCHIO LASER DI CLASSE 1

PRODUCTO LÁSER DE CLASE 1

APARELHO A LASER DE CLASSE 1

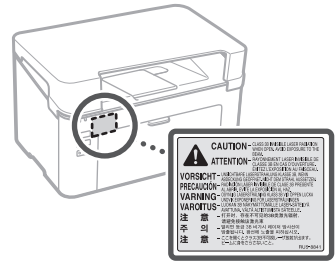
LUOKAN 1 LASER-TUOTE

LASERPRODUKT KLASSE 1

Tia laser có thể có hại cho cơ thể con người. Do bức xạ phát ra trong sản phẩm được giới hạn hoàn toàn trong các bộ phận vỏ bảo vệ và nắp đậy bên ngoài, không có tia laser thoát ra trong quá trình vận hành máy thông thường. Hãy đọc các chú thích và chỉ dẫn sau để đảm bảo an toàn.

- Không được mở bất kỳ phần nắp đậy nào ngoài những phần ghi trong hướng dẫn sử dụng của máy này.
- Nếu tia laser phát ra và chiếu vào mắt bạn, việc tiếp xúc với tia laser có thể gây tổn thương cho mắt.
- Việc sử dụng các quy trình điều khiển, điều chỉnh hoặc vận hành khác với những quy trình được quy định trong hướng dẫn này có thể dẫn đến khả năng phơi nhiễm bức xạ nguy hiểm.

### Nhãn An toàn Laser



### Các ký hiệu liên quan đến an toàn

⏻ Công tắc nguồn: vị trí "BẬT"

⏻ Công tắc nguồn: vị trí "TẮT"

⏻ Công tắc nguồn: vị trí "CHỜ"

⏻ Công tắc nút bấm: "BẬT" "TẮT"

⏻ Đầu nối đất bảo vệ

⚠ Điện áp nguy hiểm bên trong. Không mở nắp nếu không được hướng dẫn.

⚠ THẬN TRỌNG: Bề mặt nóng. Không chạm vào.

🗑 Thiết bị Loại II

⚠ Bộ phận chuyển động: Đảm bảo các bộ phận có thể tránh xa các bộ phận chuyển động

⚠ THẬN TRỌNG: Có thể gây giật điện. Hãy rút tất cả phích cắm ra khỏi ổ cắm điện.

⚠ Có các cạnh sắc. Để các cạnh sắc cách xa cơ thể.

• Một số ký hiệu hiển thị ở trên có thể không được gắn trên máy, vì tùy thuộc vào sản phẩm.

## Sản phẩm tiêu hao

### ⚠ CẢNH BÁO

Không vứt hộp mực đã sử dụng vào ngọn lửa hở. Ngoài ra, không cất giữ hộp mực hoặc giấy ở nơi tiếp xúc với ngọn lửa hở. Điều này có thể khiến mực hoặc giấy bắt lửa và gây bỏng hoặc cháy nổ.

# Chú ý

## Tên Sản phẩm

Các quy định về an toàn yêu cầu phải đăng ký tên sản phẩm.

Tại một số khu vực có bán sản phẩm này, (các) tên sau đây ở trong ngoặc ( ) có thể được dùng để đăng ký thay thế.

imageCLASS LBP112 (F173000)

## Các yêu cầu EMC trong Chỉ thị EC

Thiết bị này tuân thủ các yêu cầu cơ bản về EMC trong Chỉ thị EC. Chúng tôi tuyên bố rằng sản phẩm này tuân thủ các yêu cầu về EMC trong Chỉ thị EC ở mức nguồn đầu vào danh định 230 V, 50 Hz mặc dù mức nguồn đầu vào định mức của sản phẩm là 220 đến 240 V, 50/60 Hz. Cần sử dụng dây cáp có vỏ bọc để tuân theo các yêu cầu kỹ thuật về EMC trong Chỉ thị EC.

## Tuyên bố khước từ

- Thông tin trong tài liệu này có thể được thay đổi mà không cần thông báo.
- CANON INC. KHÔNG ĐẢM BẢO, DÙ Ở BẤT KỲ HÌNH THỨC NÀO, VỀ TÀI LIỆU NÀY, DÙ LÀ RÕ RÀNG HAY NGỤ Ý, TRỪ KHI ĐƯỢC NÊU TRONG TÀI LIỆU NÀY, BAO GỒM NHƯNG KHÔNG GIỚI HẠN, VIỆC BẢO HÀNH VỀ KHẢ NĂNG TIẾP THỊ, KHẢ NĂNG BÁN ĐƯỢC, SỰ PHÙ HỢP MỘT MỤC ĐÍCH SỬ DỤNG CỤ THỂ HOẶC KHÔNG VI PHẠM. CANON INC. KHÔNG CHỊU TRÁCH NHIỆM VỀ BẤT KỲ HƯ HỎNG NÀO DÙ BÁN CHẤT LÀ DO TRỰC TIẾP, NGẪU NHIÊN HAY DO HẬU QUẢ HOẶC NHỮNG THIẾT HẠI HAY CHI PHÍ PHÁT SINH TỪ VIỆC SỬ DỤNG TÀI LIỆU NÀY.

# Về Hướng dẫn sử dụng này

## Thương hiệu

Mac là một thương hiệu của Apple Inc. Microsoft, Windows, Windows Vista, Windows Server, Internet Explorer, Excel và PowerPoint là các thương hiệu đã được đăng ký hoặc thương hiệu của Microsoft Corporation tại Hoa Kỳ và/hoặc các quốc gia khác.

Các tên sản phẩm và công ty khác để cập đến ở đây có thể là các thương hiệu của các chủ sở hữu tương ứng.

# Phần mềm Bên thứ ba

Sản phẩm Canon này (gọi là "SẢN PHẨM") bao gồm các mô-đun phần mềm bên thứ ba. Việc sử dụng và phân phối các mô-đun phần mềm này, bao gồm bất kỳ cập nhật nào của các mô-đun phần mềm đó (gọi chung là "PHẦN MỀM"), phải tuân thủ theo các điều kiện cấp phép từ (1) đến (9) dưới đây.

- (1) Bạn đồng ý rằng sẽ tuân thủ bất kỳ điều luật kiểm soát xuất khẩu, giới hạn hoặc quy định của các quốc gia có liên quan trong trường hợp SẢN PHẨM này, bao gồm cả PHẦN MỀM, được vận chuyển, chuyển nhượng hoặc xuất khẩu tới bất kỳ quốc gia nào.

- (2) Chủ sở hữu các quyền của PHẦN MỀM, ở mọi phương diện, được giữ các quyền lợi, quyền sở hữu và quyền sở hữu tài sản trí tuệ trong và đối với PHẦN MỀM. Trừ khi được nêu rõ ràng tại đây, theo đây, chủ sở hữu các quyền của PHẦN MỀM không chuyển giao hoặc trao cho bạn giấy phép hoặc quyền, dù là rõ ràng hay ngụ ý, đối với bất kỳ quyền sở hữu trí tuệ nào mà chủ sở hữu quyền có đối với PHẦN MỀM.
- (3) Bạn chỉ có thể dùng PHẦN MỀM để sử dụng cùng với SẢN PHẨM.
- (4) Bạn không có quyền chuyển nhượng, cấp phép phụ, tiếp thị, phân phối hoặc chuyển nhượng PHẦN MỀM tới bất kỳ bên thứ ba nào mà không có sự đồng ý bằng văn bản của chủ sở hữu các quyền của PHẦN MỀM.
- (5) Mặc dù theo như trên, bạn có thể chuyển nhượng PHẦN MỀM chỉ khi (a) bạn nhượng tất cả các quyền của bạn đối với SẢN PHẨM và tất cả các quyền và nghĩa vụ theo điều kiện cấp phép tới người được chuyển nhượng và (b) người được chuyển nhượng đó đồng ý chịu ràng buộc bởi các điều kiện này.
- (6) Bạn không được dịch ngược, phân tích ngược, tháo rời hay giảm mã của SẢN PHẨM thành dạng con người có thể đọc.
- (7) Bạn không được điều chỉnh, thay đổi, dịch, thuê, cho thuê hay cho mượn PHẦN MỀM hay tạo ra các sản phẩm phái sinh dựa trên PHẦN MỀM.
- (8) Bạn không có quyền xóa bỏ hoặc tạo ra các bản sao riêng biệt của PHẦN MỀM từ SẢN PHẨM.
- (9) Phần con người có thể đọc được (mã nguồn) của PHẦN MỀM không được cấp phép cho bạn.

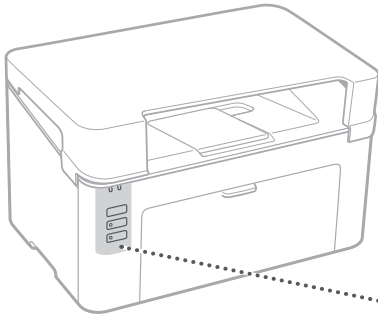
Mặc dù có các mục từ (1) đến (9) ở trên, SẢN PHẨM bao gồm các mô-đun phần mềm bên thứ ba đi kèm với các điều kiện cấp phép khác, và các mô-đun phần mềm này sẽ tuân theo các điều kiện cấp phép khác. Vui lòng tham khảo các điều kiện cấp phép khác được mô tả trong Phụ lục của Hướng dẫn sử dụng dành cho SẢN PHẨM tương ứng. Hướng dẫn sử dụng này được đăng tải trên <http://canon.com/oip-manual>.

Khi sử dụng SẢN PHẨM này, bạn sẽ được xem là đã đồng ý với tất cả điều kiện cấp phép. Nếu không đồng ý, vui lòng liên hệ lại đại diện cung cấp dịch vụ của bạn.

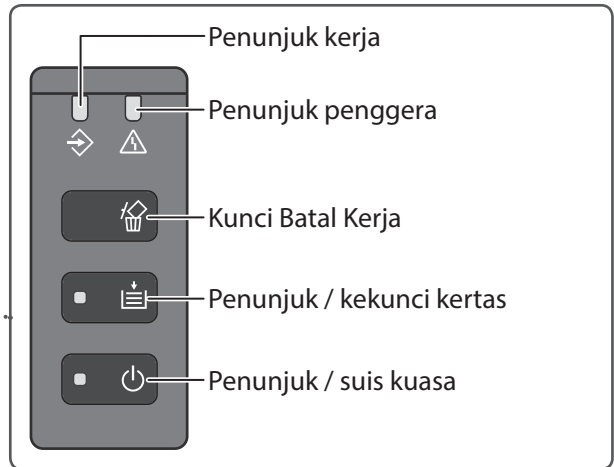
V\_170511

## Mula Mengendalikan Mesin

Mesin



Kekunci dan Penunjuk



### Tetingkap Status Pencetak



Tetingkap Status Pencetak membolehkan anda memeriksa status pencetak, melakukan fungsi utiliti dan menentukan tetapan untuk unit pencetak dan sebagainya.

Untuk butiran

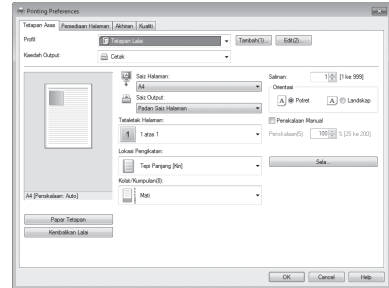
➡ Bantuan Tetingkap Status Pencetak





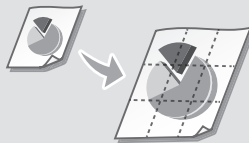
## Mencetak

1. Buka dokumen yang ingin dicetak dan pilih fungsi cetak bagi aplikasi.
2. Pilih pemacu pencetak untuk mesin dan pilih [Preferences] (Keutamaan) atau [Properties] (Sifat).
3. Tentukan saiz kertas.
4. Tentukan sumber kertas dan jenis kertas.
5. Tentukan tetapan cetakan, seperti yang diperlukan.
6. Pilih [OK].
7. Pilih [Print] (Cetak) atau [OK].



### Tetapan cetak yang berguna

- N pada 1
- Cetakan Dikolat
- Cetakan Poster



Untuk butiran

➡ "Mencetak" dalam Panduan Pengguna

# Memuatkan Kertas

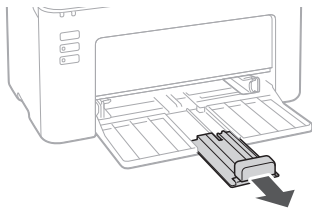
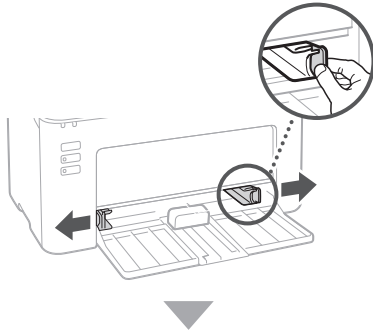
Untuk butiran

➔ "Memuatkan Kertas" dalam Panduan Pengguna

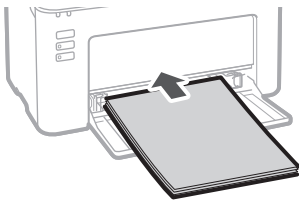
## Memuatkan di dalam Laci

1 Buka laci.

2

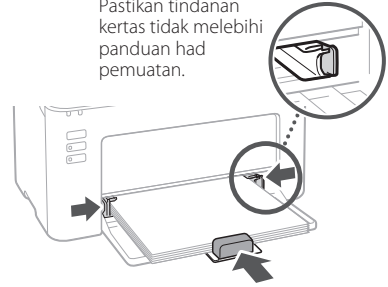


3



4

Pastikan tindanan kertas tidak melebihi panduan had pemuatan.



5 Letakkan penutup pada laci.

# Jika Masalah Berlaku

Untuk butiran

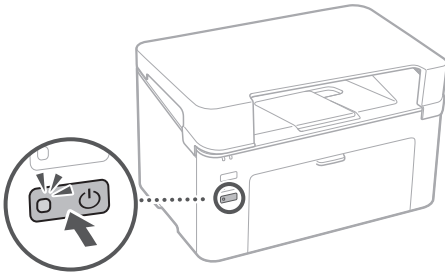
➔ "Penyelenggaraan" dan "Penyelesaian Masalah" dalam Panduan Pengguna

## Mesin Nampaknya Tidak Berfungsi

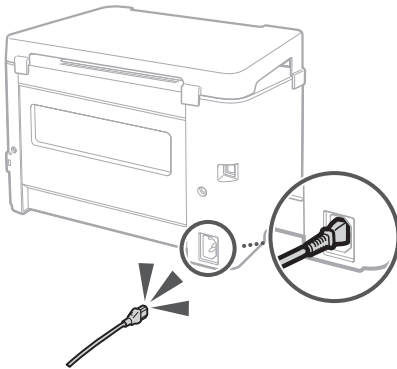
Periksa yang berikut.

- Adakah kuasa DIHIDUPKAN?
- Adakah mesin tidak berada dalam mod tidur?

Jika penunjuk kuasa tidak menyala, tekan suis kuasa.



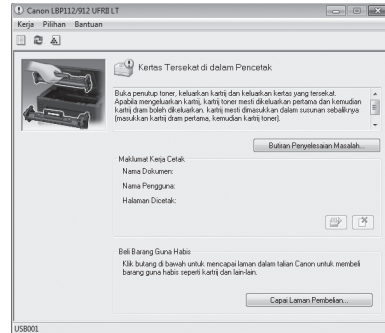
- Adakah kord kuasa disambungkan dengan betul?



Jika masalah berterusan, lihat Panduan Pengguna.

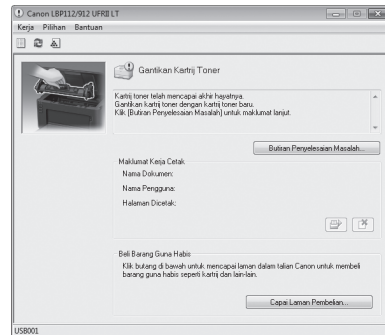
## Berlaku Kertas Tersekat

Keluarkan kertas tersekat mengikut mesej yang dipaparkan dalam Tetingkap Status Pencetak.



## Menggantikan Barang Guna Habis

Gantikan barang guna habis mengikut mesej yang dipaparkan dalam Tetingkap Status Pencetak.



Nombor model barang guna habis gantian

- Canon Toner Cartridge 047
- Canon Drum Cartridge 049

# Lampiran

## Arahan Keselamatan Penting

Manual ini menerangkan hanya amaran dan awas untuk pemasangan dan bekalan kuasa. Pastikan anda juga membaca "Arahan Keselamatan Penting" yang diterangkan dalam Panduan Penggunaan.

### ⚠️ AMARAN

Menunjukkan amaran mengenai operasi yang boleh menyebabkan seseorang mati atau tercedera jika tidak dilakukan dengan betul. Untuk menggunakan mesin dengan selamat, selalu berikan perhatian kepada amaran ini.

### ⚠️ AWAS

Menunjukkan awas mengenai operasi yang boleh menyebabkan seseorang tercedera jika tidak dilakukan dengan betul. Untuk menggunakan mesin dengan selamat, selalu berikan perhatian kepada awas ini.

### ⚠️ PENTING

Menunjukkan keperluan dan sekatan operasi. Pastikan anda membaca item-item ini dengan teliti untuk mengendalikan mesin dengan betul dan mengelakkan kerosakan pada mesin atau harta.

## Pemasangan

Untuk menggunakan mesin ini dengan selamat dan selesa, baca langkah berjaga-jaga berikut dengan teliti dan pasang mesin di lokasi yang sesuai.

### ⚠️ AMARAN

Jangan pasang di lokasi yang boleh

- menyebabkan kebakaran atau kejutan elektrik
- Lokasi yang slot pengudaraan tersekat (terlalu dekat dengan dinding, katil, sofa, permaidani atau objek yang serupa)
- Lokasi yang lembap atau berhabuk
- Lokasi yang terdedah kepada cahaya matahari terus atau di luar rumah
- Lokasi yang terdedah kepada suhu tinggi
- Lokasi yang terdedah kepada nyalaan terbuka
- Berhampiran dengan alkohol, pencair cat atau bahan mudah terbakar lain

### Amaran lain

- Jangan sambungkan kabel yang tidak diluluskan kepada mesin ini. Buat demikian boleh menyebabkan kebakaran atau kejutan elektrik.
- Jangan letakkan rantai dan objek logam lain atau bekas yang diisi dengan cecair pada mesin. Jika bahan asing bersentuhan dengan bahagian elektrik di dalam mesin, ia boleh menyebabkan kebakaran atau kejutan elektrik.
- Jika sebarang bahan asing jatuh ke dalam mesin ini, cabut palam kuasa daripada saluran keluar kuasa AU dan hubungi pengedar Canon yang sah di tempat anda.

### ⚠️ AWAS

Jangan pasang di lokasi berikut

Mesin mungkin terlepas atau jatuh, menyebabkan kecederaan.

- Lokasi yang tidak stabil
- Lokasi yang terdedah kepada gegaran

### Awas lain

- Apabila membawa mesin ini, ikut arahan dalam manual ini. Jika dibawa dengan tidak betul, ia mungkin jatuh dan menyebabkan kecederaan.
- Apabila memasang mesin ini, berhati-hati supaya tangan anda tidak terperangkap di antara mesin dengan lantai atau dinding. Buat demikian boleh menyebabkan kecederaan.

### Elakkan lokasi kurang pengudaraan

Mesin ini menajankan sedikit ozon dan pemancaran lain semasa penggunaan biasa. Pemancaran ini tidak memudaratkan kesihatan. Walau bagaimanapun, ia mungkin ketara semasa penggunaan lanjutan atau jalanan pengeluaran yang lama di dalam bilik yang kurang pengudaraan. Untuk mengekalkan persekitaran kerja yang selesa, disyorkan supaya bilik mesin beroperasi mempunyai pengudaraan yang sewajarnya. Selain itu, elakkan lokasi yang akan membuat orang terdedah kepada pemancaran daripada mesin.

### Bekalan Kuasa

#### ⚠️ AMARAN

- Gunakan hanya bekalan kuasa yang memenuhi keperluan voltan yang ditentukan. Kegagalan berbuat demikian boleh menyebabkan kebakaran atau kejutan elektrik.
- Jangan gunakan kord kuasa selain daripada yang disediakan kerana ini boleh menyebabkan kebakaran atau kejutan elektrik.
- Kord kuasa yang disediakan adalah bertujuan untuk digunakan dengan mesin ini. Jangan sambungkan kord kuasa kepada peranti lain.
- Jangan ubah suai, tarik, bengkokkan secara paksa atau lakukan apa-apa perbuatan lain yang boleh merosakkan kord kuasa. Jangan letakkan objek berat di atas kord kuasa.
- Merosakkan kord kuasa boleh menyebabkan kebakaran atau kejutan elektrik.
- Jangan pasang atau cabut palam kuasa dengan tangan yang basah kerana ini boleh menyebabkan kejutan elektrik.
- Jangan gunakan kord pemanjangan atau jalur kuasa berbilang palam dengan mesin. Buat demikian boleh menyebabkan kebakaran atau kejutan elektrik.
- Jangan balut kord kuasa atau menyimpulkannya kerana ini boleh menyebabkan kebakaran atau kejutan elektrik.
- Masukkan palam kuasa sepenuhnya ke dalam saluran keluar kuasa AU. Kegagalan berbuat demikian boleh menyebabkan kebakaran atau kejutan elektrik.
- Keluarkan palam kuasa sepenuhnya daripada saluran keluar kuasa AU semasa ribut petir. Kegagalan berbuat demikian boleh menyebabkan kebakaran, kejutan elektrik atau kerosakan pada mesin.
- Pastikan bahawa bekalan kuasa untuk mesin adalah selamat dan mempunyai voltan yang tetap.
- Simpan kord kuasa jauh daripada punca haba; kegagalan berbuat demikian boleh menyebabkan salutan kord kuasa lebur dan menyebabkan kebakaran atau kejutan elektrik.

### Elakkan keadaan berikut:

Jika tegasan berlebihan dikenakan pada bahagian sambungan kord kuasa, ia boleh merosakkan kord kuasa atau wayar di dalam mesin boleh tercabut. Ini boleh menyebabkan kebakaran.

- Menyambungkan dan mencabut kord kuasa dengan kerap.
- Tersandung pada kord kuasa.

- Kord kuasa bengkok berhampiran dengan bahagian sambungan dan tegasan berterusan dikenakan pada saluran keluar kuasa atau bahagian sambungan.
- Mengenakan daya berlebihan pada palam kuasa.

### ⚠️ AWAS

Pasang mesin ini berhampiran dengan saluran keluar kuasa dan biarkan ruang yang mencukupi di sekitar palam kuasa supaya dapat dicabut dengan mudah dalam keadaan kecemasan.

## Pengendalian

### ⚠️ AWAS

#### Keselamatan Laser

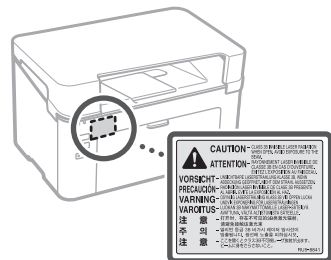
Produk ini disahkan sebagai produk laser Kelas 1 dalam IEC60825-1:2014 dan EN60825-1:2014.

CLASS 1 LASER PRODUCT  
LASER KLASSE 1  
APPAREIL À LASER DE CLASSE 1  
APPARECCHIO LASER DI CLASSE 1  
PRODUCTO LÁSER DE CLASE 1  
APARELHO A LASER DE CLASSE 1  
LUOKAN 1 LASER-TUOTE  
LASERPRODUKT KLASS 1

Pancaran laser boleh memudaratkan tubuh manusia. Memandangkan sinaran yang dipancarkan di dalam produk terbatas sepenuhnya di dalam perumahan pelindung dan penutup luar, pancaran laser tidak dapat terlepas daripada mesin semasa mana-mana fasa operasi pengguna. Baca catatan dan arahan berikut untuk keselamatan.

- Jangan sekali-kali buka penutup selain daripada yang diarahkan dalam manual untuk mesin ini.
- Jika pancaran laser terlepas dan terkena mata anda, pendedahan boleh merosakkan mata anda.
- Penggunaan kawalan, pelarasan atau pelaksanaan prosedur selain daripada yang ditentukan dalam manual ini boleh menyebabkan pendedahan kepada sinaran berbahaya.

## Label Keselamatan Laser



## Simbol Berkaitan Keselamatan

- | Suis kuasa: Kedudukan "DIHIDUPKAN"
- Suis kuasa: Kedudukan "DIMATIKAN"
- ⏻ Suis kuasa: Kedudukan "TUNGGU SEDIA"
- Ⓜ Suis tekan ■ "DIHIDUPKAN" ■ "DIMATIKAN"
- Ⓜ Terminal pembumian pelindung
- ⚠ Voltan berbahaya di dalam. Jangan buka penutup kecuali diarahkan.
- ⚠ AWAS: Permukaan panas. Jangan sentuh.
- Ⓜ Peralatan kelas II
- ⚠ Bahagian bergerak: Jauhkan bahagian tubuh daripada bahagian bergerak
- ⚠ AWAS: Kejutan elektrik boleh berlaku. Cabut semua palam kuasa daripada saluran keluar kuasa.
- ⚠ Terdapat tepi yang tajam. Jauhkan bahagian-bahagian tubuh daripada tepi yang tajam.
- Sesetengah simbol yang ditunjukkan di atas mungkin tidak terdapat bergantung pada produk.

## Barang Guna Habis

### ⚠ AMARAN

Jangan buang kartrij toner yang telah digunakan ke dalam nyalaan terbuka. Selain itu, jangan simpan kartrij toner atau kertas di lokasi yang terdedah kepada nyalaan terbuka. Ini boleh menyebabkan toner atau kertas tersebut menyala dan menyebabkan luka terbakar atau kebakaran.

## Notis

### Nama Produk

Peraturan keselamatan memerlukan nama produk didaftarkan.

Di sesetengah kawasan produk ini dijual, nama(-nama) dalam kurungan ( ) berikut mungkin didaftarkan sebagai ganti.

imageCLASS LBP112 (F173000)

### Keperluan EMC bagi Arahan EC

Peralatan ini mematuhi keperluan penting EMC bagi Arahan EC. Kami memperakui bahawa produk ini mematuhi keperluan EMC bagi Arahan EC pada input utama nominal 230 V, 50 Hz walaupun input produk berkadar ialah 220 sehingga 240 V, 50/60 Hz. Penggunaan kabel terlindung diperlukan untuk mematuhi keperluan teknikal EMC bagi Arahan EC.

### Penafian

- Maklumat dalam dokumen ini tertakluk kepada perubahan tanpa notis.
- CANON INC. TIDAK MEMBUAT APA-APA JENIS JAMINAN BERHUBUNG DENGAN BAHAN INI, SAMA ADA NYATA ATAU TERSIRAT, KECEUALI YANG DISEDIAKAN DALAM INI, TERMASUK TANPA HAD, DARIPADANYA, JAMINAN KEBOLEHPASARAN, KEBOLEHDAGANGAN, KESESUAIAN BAGI TUJUAN TERTENTU PENGGUNAAN ATAU BUKAN PELANGGARAN. CANON INC. TIDAK AKAN BERTANGGUNGJAWAB TERHADAP APA JUA JENIS KEROSAKAN LANGSUNG, SAMPINGAN ATAU LANJUTAN, ATAU KERUGIAN ATAU PERBELANJAAN YANG TIMBUL DARIPADA PENGGUNAAN BAHAN INI.

## Mengenai Manual Ini

### Tanda Dagangan

Mac ialah tanda dagangan Apple Inc. Microsoft, Windows, Windows Vista, Windows Server, Internet Explorer, Excel dan PowerPoint ialah tanda dagangan berdaftar atau tanda dagangan Microsoft Corporation di Amerika Syarikat dan/atau negara-negara lain. Nama produk dan syarikat lain dalam ini mungkin tanda dagangan pemilik masing-masing.

## Perisian Pihak Ketiga

Produk Canon ini ("PRODUK") merangkumi modul perisian pihak ketiga. Penggunaan dan pengedaran modul perisian ini, termasuk sebarang kemas kini modul perisian tersebut (secara kolektif, "PERISIAN") adalah tertakluk kepada syarat lesen (1) hingga (9) di bawah.

- (1) Anda bersetuju bahawa anda akan mematuhi apa-apa undang-undang, sekatan atau peraturan kawalan eksport yang berkaitan bagi negara yang terlibat sekiranya PRODUK ini termasuk PERISIAN dihantar, dipindahkan atau dieksport ke mana-mana negara.
- (2) Pemegang hak PERISIAN mengekalkan sepenuhnya hak milik, pemilikan dan hak harta intelektual dalam dan kepada PERISIAN. Kecuali dinyatakan dengan jelas dalam ini, tiada lesen atau hak, secara nyata atau tersirat, dengan ini disampaikan atau diberikan oleh pemegang hak PERISIAN kepada anda untuk mana-mana harta intelektual pemegang hak PERISIAN.
- (3) Anda boleh menggunakan PERISIAN semata-mata untuk penggunaan dengan PRODUK.
- (4) Anda tidak boleh menyerahkan, memberikan sublesen, memasarkan, mengedarkan atau memindahkan PERISIAN kepada mana-mana pihak ketiga tanpa izin bertulis terlebih dahulu daripada pemegang hak PERISIAN.
- (5) Walau apa pun yang disebut di atas, anda boleh memindahkan PERISIAN hanya apabila (a) anda menyerahkan semua hak anda kepada PRODUK dan semua hak dan kewajipan di bawah syarat lesen kepada penerima pindahan dan (b) penerima pindahan tersebut bersetuju untuk terikat dengan semua syarat ini.
- (6) Anda tidak boleh menyahkompil, melakukan kejuruteraan balikan, memisahkan bahagian-bahagiannya atau sebaliknya mengurangkan kod PERISIAN kepada bentuk yang boleh dibaca oleh manusia.
- (7) Anda tidak boleh mengubah suai, menyesuaikan, menterjemah, menyewa, memajakkan atau meminjam PERISIAN atau mencipta kerja terbitan berdasarkan PERISIAN.
- (8) Anda tidak berhak untuk membuang atau membuat salinan berasingan PERISIAN daripada PRODUK.
- (9) Bahagian PERISIAN yang boleh dibaca oleh manusia (kod sumber) tidak dilesenkan kepada anda.

Walaupun terdapat (1) hingga (9) di atas, PRODUK merangkumi modul perisian pihak ketiga yang disertakan dengan syarat lesen lain, dan modul perisian ini adalah tertakluk kepada syarat lesen lain. Sila rujuk syarat lesen lain modul perisian pihak ketiga yang diterangkan dalam Lampiran Manual bagi PRODUK berkenaan. Manual ini tersedia di <http://canon.com/oip-manual>.

Dengan menggunakan PRODUK ini, anda akan dianggap bersetuju dengan semua syarat lesen yang dikenakan. Jika anda tidak bersetuju dengan syarat lesen ini, sila hubungi wakil perkhidmatan anda.

V\_170511

# Memo



A large, empty rectangular box with a thin black border, intended for writing the memo's content.

# Memo



**CANON INC.**

30-2, Shimomaruko 3-chome, Ohta-ku, Tokyo  
146-8501, Japan

**CANON MARKETING JAPAN INC.**

16-6, Konan 2-chome, Minato-ku, Tokyo 108-8011,  
Japan

**CANON U.S.A., INC.**

One Canon Park, Melville, NY 11747, U.S.A.

**CANON EUROPA N.V.**

Bovenkerkerweg 59, 1185 XB Amstelveen, The  
Netherlands

**CANON CHINA CO. LTD.**

2F Jinbao Building No.89, Jinbao Street,  
Dongcheng District, Beijing 100005, PRC

**CANON SINGAPORE PTE LTD**

1 Fusionopolis Place, #15-10, Galaxis, Singapore  
138522

**CANON AUSTRALIA PTY LTD**

Building A, The Park Estate, 5 Talavera Road,  
Macquarie Park, NSW 2113, Australia

**CANON GLOBAL WORLDWIDE SITES**

<http://www.canon.com/>

