

Set-Up Instructions

READ THIS FIRST

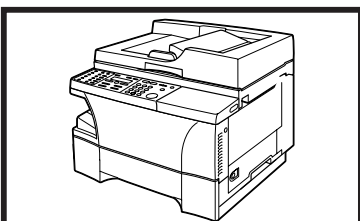
Thank you for purchasing Canon imageCLASS D800 Series.

To get your machine ready for use, please follow the instructions in this document before referring to any other documentation.

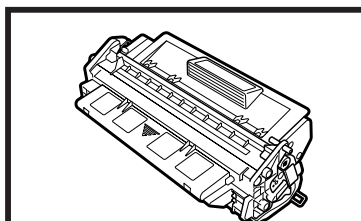
1

Unpack the machine and its components.

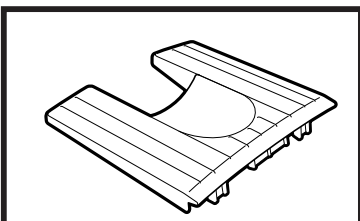
Check that you have the following:



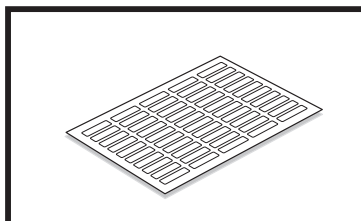
Machine



L50 S-Cartridge



Output tray



Destination labels*

- **Power cord**
- **Telephone cable***
- **Documentation**
 - Set-Up Instructions
 - Basic Guide
 - Fax Guide*
 - Registration Card**
 - Limited Warranty Notice
- **CD-ROM**

* imageCLASS D880 Model

** U.S.A. only

2

Remove the shipping materials.

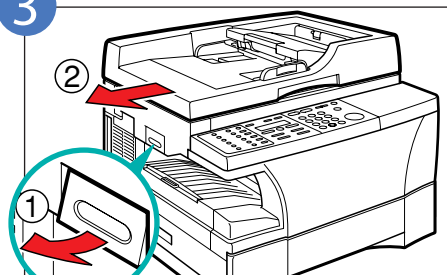
1

Place the machine on a flat surface.

2

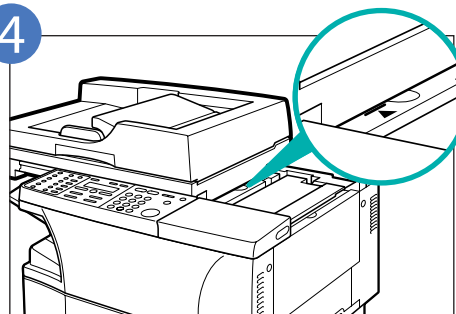
Remove **all** shipping tapes from the **exterior** of the machine.

3



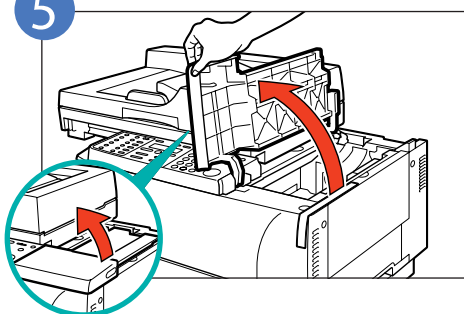
Lift the platen unit lever ① and slide the platen unit to the left ②.

4



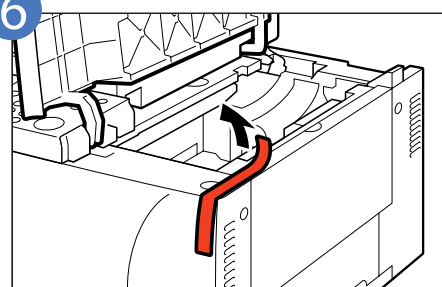
Slide the platen unit to the left until the **◀** mark appears.

5



Open the cartridge cover.

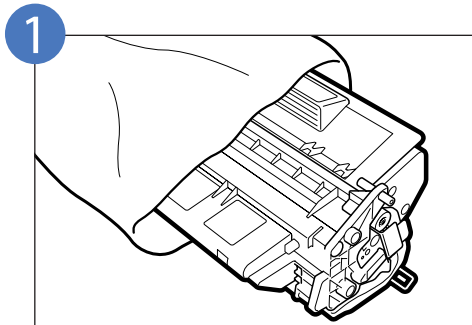
6



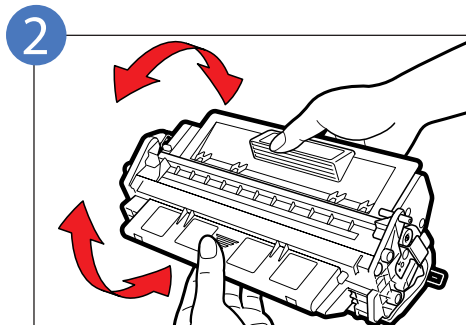
Remove the shipping material.

3

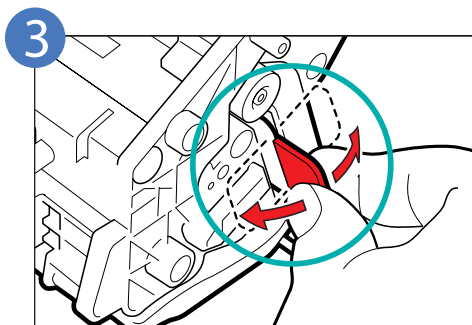
Install the cartridge.



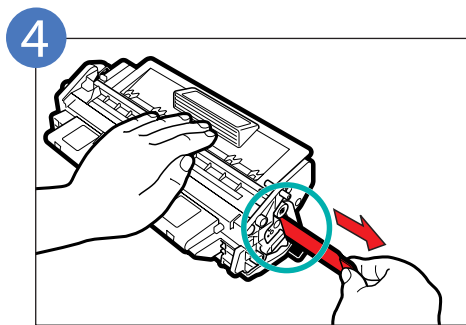
Remove the cartridge from its bag.



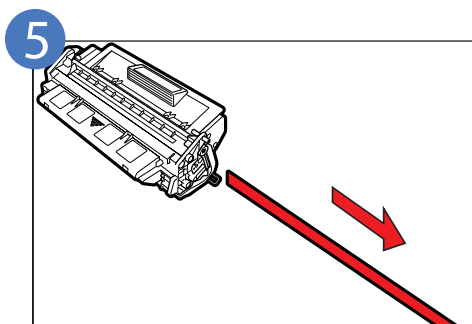
Rock the cartridge several times to distribute the toner evenly.



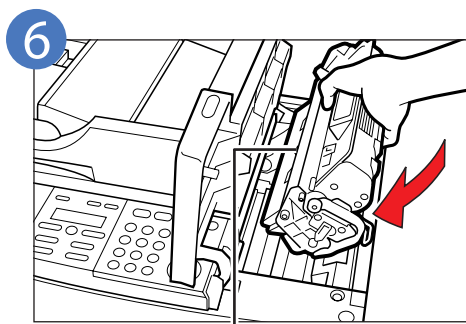
Place the cartridge on a flat and stable surface, grip the sealing tape tab, and snap in the direction shown. Make sure that the tab is detached from the cartridge.



Grasp the cartridge with one hand, firmly and slowly pull out the sealing tape tab with the other hand.



Remove the sealing tape completely.



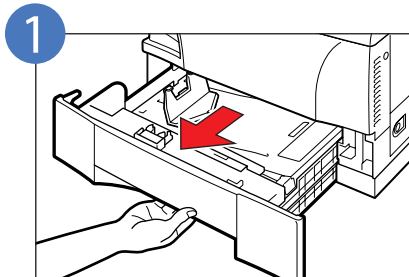
Slide the cartridge into the machine with the arrow mark up as far as it will go.

Close the cartridge cover and slide the platen unit back to the original position.

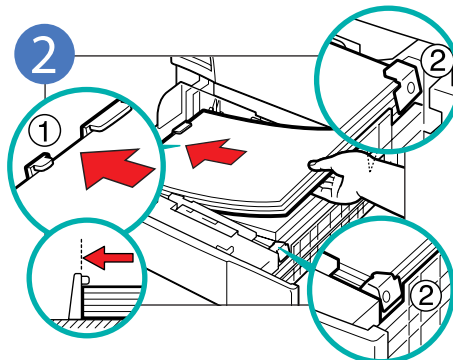
Arrow Mark

4

Load paper.



Pull out the cassette until it stops.



Load the paper stack beneath the cassette's length guide ① and width guides ②.

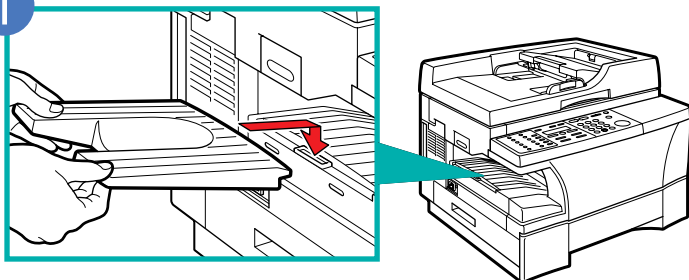
Make sure that the paper stack does not exceed the length and width guides in the cassette. Failure to do so will cause a paper jam.

Gently insert the cassette as far as it will go.

5

Attach the output tray.

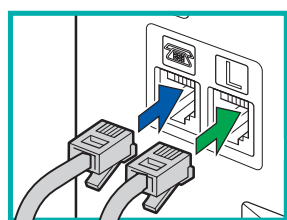
1



Hook the tab on the output tray onto the opening on the left side of the machine.

6

Connect the telephone cable and any necessary external device. (Only for the imageCLASS D880 model)



Telephone line cord
Connect the supplied telephone line to the jack. Then connect the other end to the telephone line jack on your wall.

External device (optional)
Connect the cord of an extension telephone, answering machine or data modem to the jack.

Connect external devices as follows:

: Telephone line jack
 : External device jack

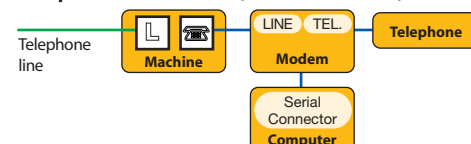
•Telephone or answering machine



•Telephone and answering machine



•Telephone and modem (external modem)



•Built-in computer modem and telephone



7

Connect the machine to your computer.

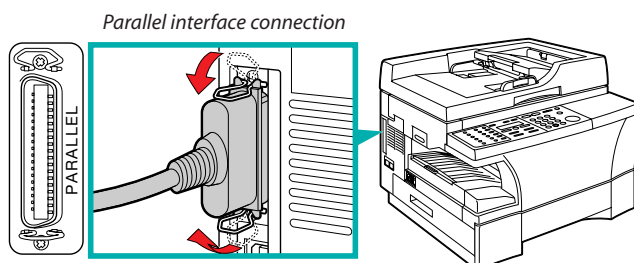


NOTE

- Printer cables are not included.

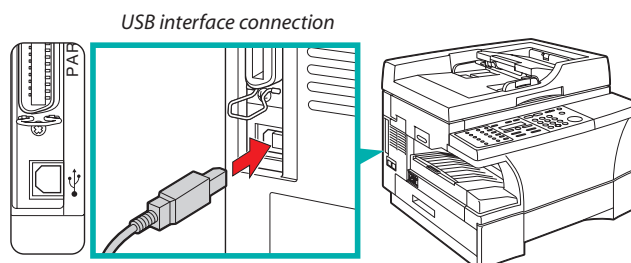
Using a parallel cable

Make sure that the computer is turned off before connecting the cable.



Make sure that the other end is securely connected to your computer.

Using a USB cable

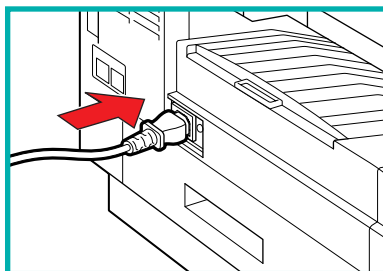


Make sure that the other end is securely connected to your computer.

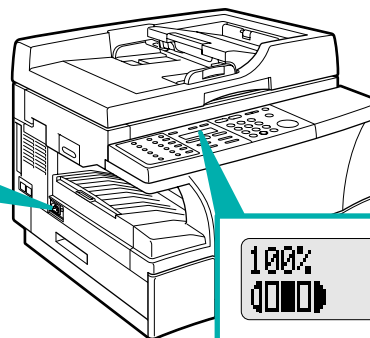
8

Connect the power cord.

When the power cord is plugged into both the machine and a power outlet, the machine will turn on. The LCD displays PLEASE WAIT. Please wait until the LCD display returns to the Copy Mode standby display.



Connect the supplied power cord to the power cord connector on the left side of the machine. Then connect the other end into a properly grounded standard 120 V three-prong outlet.



100% LTR
0000 TEXT 01

Copy Mode standby display



NOTE

- The machine does not have a power switch.

9

Set the fax receive mode. (Only for the imageCLASS D880 model)

1

Press **FAX** to switch the machine to the Fax Mode.

2

Press **Receive Mode** until the mode you want appears.

ex: RECEIVE MODE
Manual

3

You can select from the following modes:

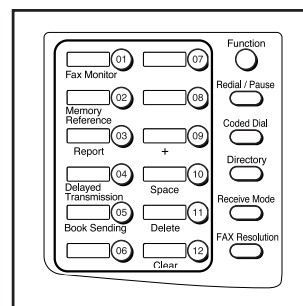
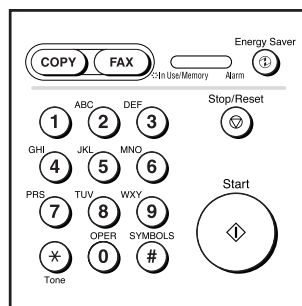
FAX ONLY: if you use the machine to receive only faxes.

DRPD: to distinguish between fax and voice calls by using Distinctive Ring Patterns.

MANUAL: you can receive faxes by pressing **Start** before hanging up the handset on the telephone.

AnsMode: if you want to receive faxes automatically and route voice calls to an answering machine.

FaxTel: when a telephone is connected to the machine, the machine automatically switches between faxes and voice calls.



NOTE

- The machine does not ring when it receives a fax in FaxOnly. If you want to be alerted when a fax is received, connect a telephone to the machine, and enable the INCOMING RING setting. → Fax Guide
- For AnsMode, you need to connect an answering machine or a telephone with an answering machine to the machine (see step 6).
- Follow these guidelines when using the machine with an answering machine:
 - Set the answering machine to answer on the first or second ring.
 - When recording the outgoing message on the answering machine, the entire message must be no longer than 15 seconds.
- DRPD is an optional service that must be set up through your telephone company.

4

Press **Set**.




The selected receive mode is set and the machine returns to the standby mode. The current date and the selected receive mode are displayed.

ex: FAX 06/20/2004 17:08
Manual STANDARD


Turn over to
continue



10

Enter the Date and Time.

- 1 Press **Additional Functions**.
Use ◀ (-) or ▶ (+) to select 5.TIMER SETTINGS.

- 2 Press **Set** twice.
The date and time currently set for the machine are displayed.

ex: 


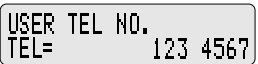

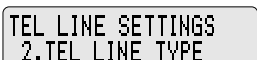
- 3 Use the numeric keys to enter the correct month, day, year and time in this order.
 - Use ◀ (-) or ▶ (+) to move the cursor under the number you want to change, then enter the correct number.
 - Enter only the last two digits of the year.
 - Use the 24-hour format for the time setting (e.g.1:00 p.m. as 13:00).




ex: 

- 4 Press **Set**.


- 5 Press **Stop/Reset** to return to the standby display.

11

Register Your Fax/Telephone Number and Name.

- 1 Press **Additional Functions**.
Use ◀ (-) or ▶ (+) to select 3.FAX SETTINGS.

- 2 Press **Set** four times.
- 3 Use the numeric keys to enter your fax number (max. 20 digits, including spaces).
 - If you have already registered your fax/telephone number, the previous entry will be displayed. To change your fax/telephone number, use the numeric keys.
 - Press **Space** to enter a space.
 - To enter a plus sign (+) before the number, press + key.
 - If you make a mistake, press **Delete** or ◀ (-) to delete the last number or press **Clear** to delete all the numbers you entered.
 ex: 
- 4 Press **Set**.



- 5 Press **Additional Functions**.

- 6 Use ◀ (-) or ▶ (+) to select 2.UNIT NAME.

- 7 Press **Set**.
- 8 Use the numeric keys to enter your name or company's name (max. 24 characters, including spaces).
 - If you are unsure how to enter characters, →FaxGuide.
 - If you have already registered your name or company's name, previous entry will be displayed. To change your name, press **Clear** to delete the previous entry and re-enter.
 - Press **Space** to enter a space and move the cursor to the right.
 - If you make a mistake, press ◀ (-) or ▶ (+) to move the cursor to the incorrect character, then press **Delete**. Or press **Clear** to delete all the characters you entered.
 ex: 
- 9 Press **Set**.
- 10 Press **Stop/Reset** to return to the standby display.

Install the printer driver (CAPT).

For parallel connection:

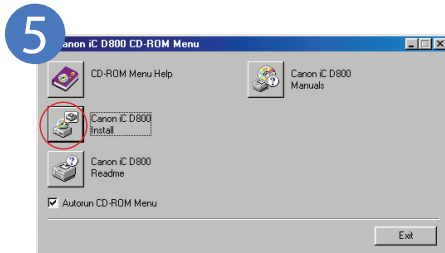
- 1 Make sure that the computer is turned off, and that the parallel cable is securely connected to the machine and the computer.
- 2 Plug the machine's power cord into a power outlet to turn it on.
- 3 Turn the computer on and start Windows.
Plug and Play will activate and the **Found New Hardware Wizard** (in Windows 95, **New Hardware or Device Wizard**) dialog box appears. Click **Cancel**.
- 4 Place the CD-ROM into the CD-ROM drive of your computer. The CD-ROM Menu starts automatically.



NOTE

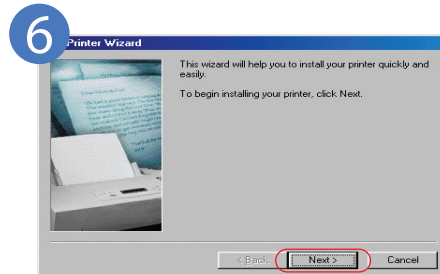
- If the CD-ROM Menu does not start automatically, choose **Run...** from the **Start Menu**. Type D:\SETUP.EXE (if your CD-ROM drive is drive D:) in the command line and click **OK**.

<Windows 95/98/Me>



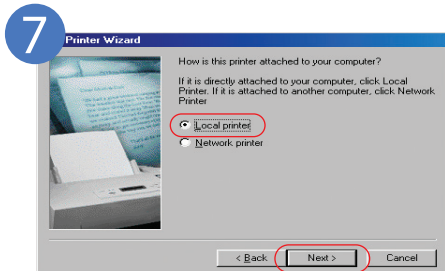
Click **Canon iC D800 Install**.

The **Add Printer Wizard** dialog box appears.



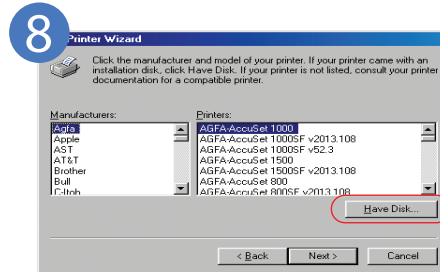
Click **Next**.

The Local printer/Network printer selection dialog box appears.



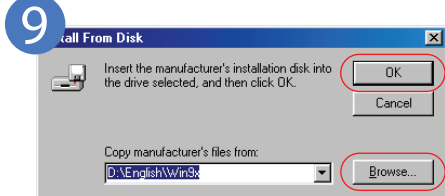
Select **Local Printer**, then click **Next**.

The Manufacturers/Printers selection dialog box appears.



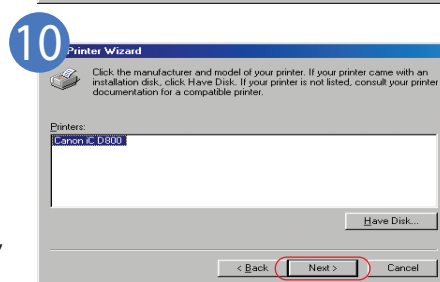
Click **Have Disk...** in the **Manufacturers/Printers** dialog box.

The **Install From Disk** dialog box appears.



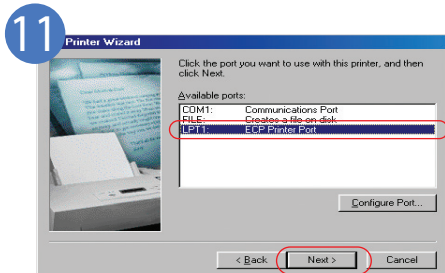
Use **Browse...** to select the directory that contains the printer driver, then click **OK**.

For example, if you are using Windows 95/98, and your CD-ROM drive is drive D:, browse D:\English\Win9x, and click **OK**.



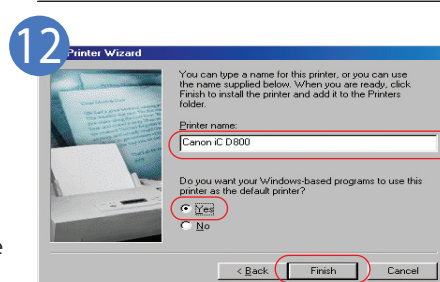
The printers selection dialog box appears. Click **Next**.

The printer port selection dialog box appears.



Select the port the machine is connected to (usually **LPT1:**), then click **Next**. The Printer name dialog box appears.

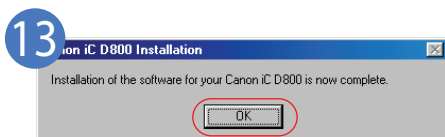
If you select the port the machine is not connected to, the machine will not print.



Click **Finish**. If you want to change the printer name, type a new name into the text box.

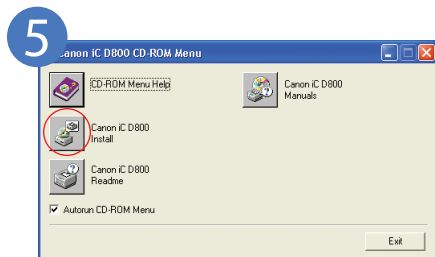
If you want to set this printer as the default printer, select **Yes**.

- If no other printer driver is installed on your computer, this printer will be set as the default printer automatically.



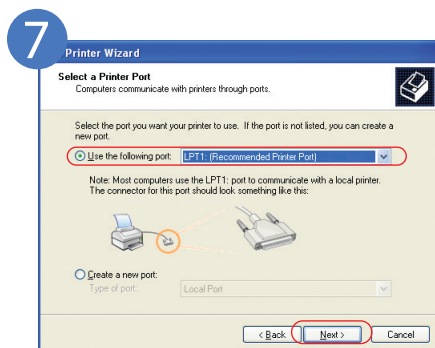
When the installation is complete, the dialog box shown on the left appears. To close the dialog box, click **OK**.

<Windows XP/Server 2003>



Click **Canon iC D800 Install**.

The **Add Printer Wizard** dialog box appears. Click **Next**.

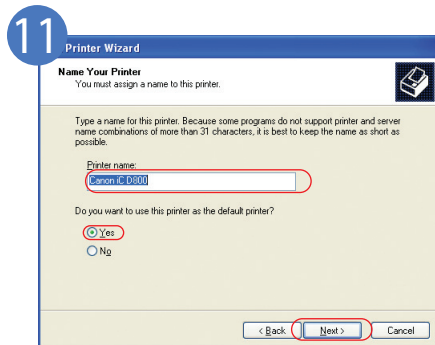


Select **Use the following port**. Select the printer port the machine is connected to (usually **LPT1: (Recommended Printer Port)**), then click **Next**.

The **Manufacturers/Printers** selection dialog box appears.



Use **Browse...** to select the directory that contains the printer driver, then click **OK**. For example, if your CD-ROM drive is drive D:\English\WinXP, click **Open**.

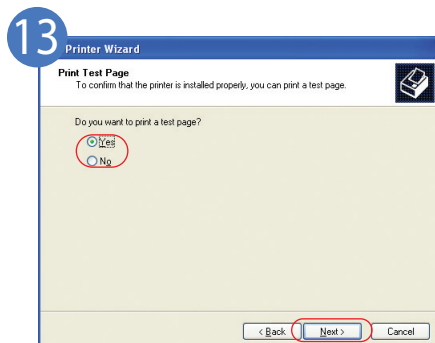


Click **Next**.

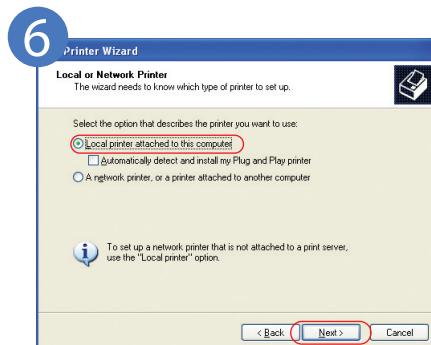
If you want to change printer name, type a new name into the text box.

If you want to set this printer as the default printer, select **Yes**.

- If no other printer driver is installed on your computer, this printer will be set as the default printer automatically.

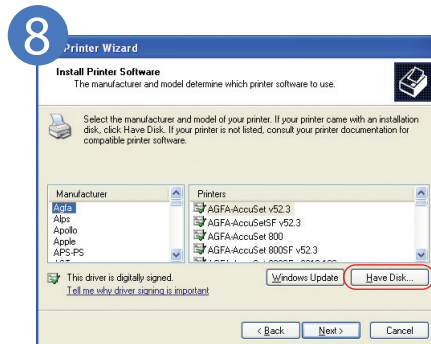


Click **Yes** if you want to print a test page, or **No** if you do not want to print a test page, then click **Next**.



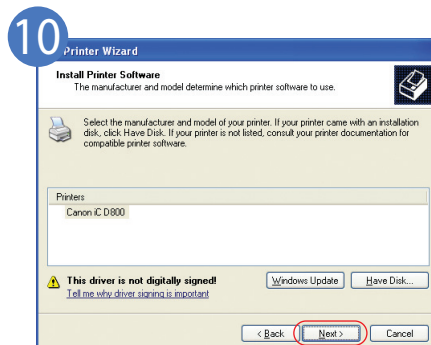
Select **Local printer attached to this computer**, then click **Next**.

The printer port selection dialog box appears. **Automatically detect and install my Plug and Play printer** is not recommended.



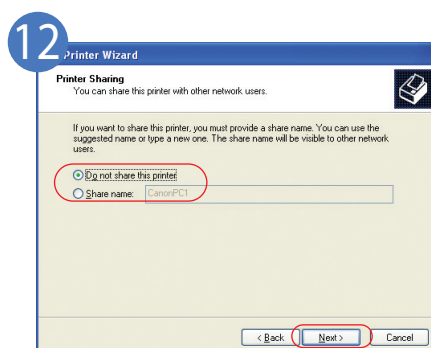
Click **Have Disk...** in the **Manufacturers/Printer** selection dialog box.

The **Install From Disk** dialog box appears.



The printer selection dialog box appears. Click **Next**.

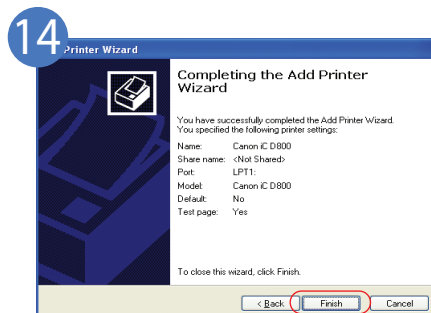
The **Printer name** dialog box appears.



If this printer is shared with other computers, select **Share name**, and click **Next**.

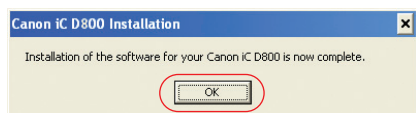
You can modify the setting after installation, from the **Printer Properties** dialog box.

- Depending on your computer settings, this selection may not be displayed.



Click **Finish**.

- 15 When installation is complete, the following dialog box appears. Click **OK**.



For installation instructions under Windows 2000/NT 4.0 → Printer Guide

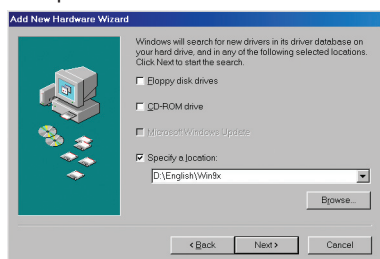
- 16 If you opted to print a test page, the test page will be printed after the installation is complete. If the test page is printed correctly, click **Yes** on the dialog box that appears.

For USB connection:

<Windows 98/Me/2000/XP/Server 2003>

- 1 Make sure that the computer is turned off.
- 2 Make sure that the power cord of the machine is plugged into the power outlet and that the machine is connected to your computer (cable not included).
- 3 Turn the computer on and the **Add New Hardware Wizard** dialog box appears. Follow the instructions on screen to initiate Plug and Play installation. When you are asked to select the directory that contains the printer driver, click **Browse....** If your CD-ROM drive is drive D:, browse to D:\English\Win9x in Windows 98, D:\English\WinMe in Windows Me, D:\English\Win2000 in Windows 2000, and D:\English\WinXP in Windows XP/Server 2003.

Example: Windows 98



Example: Windows 2000



For installation instructions using Plug and Play for the USB Port → Printer Guide

NOTE

- For installation instructions under Windows 95 → "Parallel Port Users" in Printer Guide.
For installation instructions under Windows NT 4.0 → "Windows NT 4.0 Add Printer Wizard" in Printer Guide.

13

Congratulations! You have now completed setting up your machine.

Where to go from here...

- 1 Once you have completed all steps in this document, see the Basic Guide for paper handling or copy functions of your machine.
- 2 Detailed instructions for setting up, sending faxes and receiving faxes are provided in the Fax Guide.
- 3 The Printer Guide (in the CD-ROM) provides detailed instructions on how to configure the printer driver and print from your computer.

NOTE

- Remember to register your machine to ensure product support.
The serial number is located on the back of the machine.

For installation help and operational instructions, call us at:

1-800-828-4040

U.S.A. CUSTOMERS

1-800 OK CANON

CANADA CUSTOMERS

©2004 Canon Inc. Canon and imageCLASS are trademarks of Canon Inc.
All other products and brand names are registered trademarks or trademarks of their respective owners.
Specifications subject to change without notice.
Part no. FA7-5983 (010)
PRINTED IN CHINA