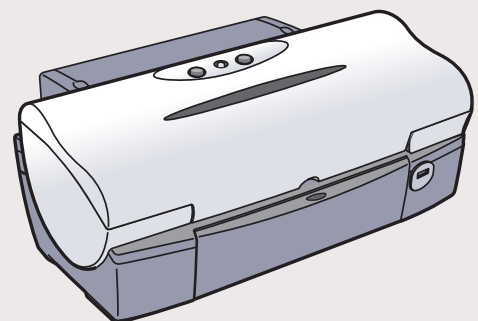


1 Unpack the Printer

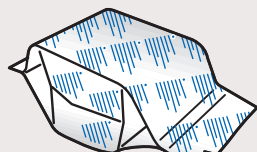
- Carefully remove all items from the box.



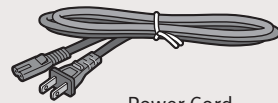
i560 Series Desktop Photo Printer



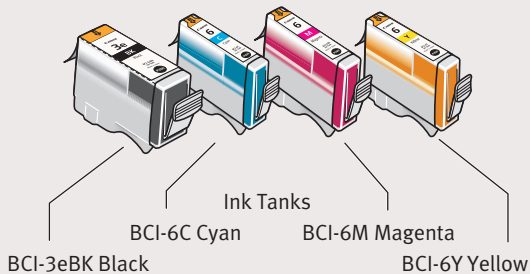
Documentation and Software Kit



i560 Series Print Head



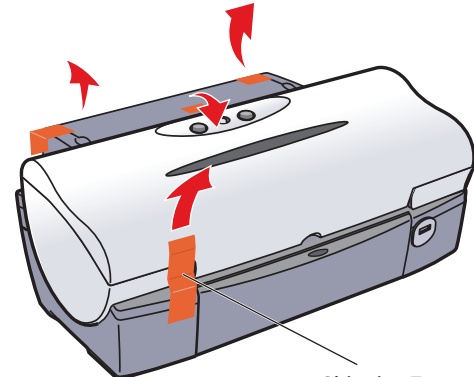
Power Cord



Ink Tanks
BCI-3eBK Black BCI-6C Cyan BCI-6M Magenta BCI-6Y Yellow

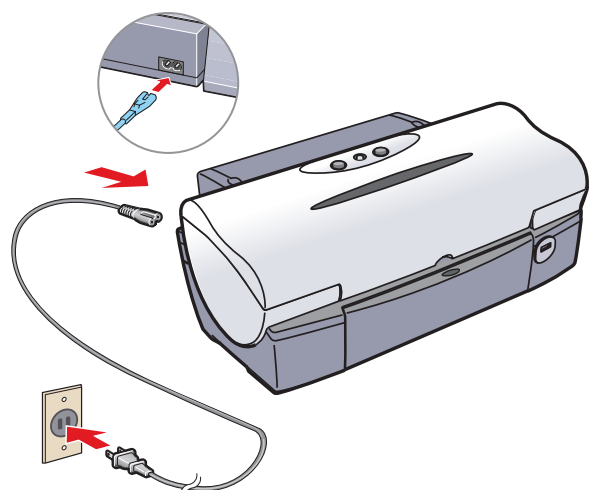
2 Prepare the Printer

- Remove the shipping tape from the front and back of the printer.

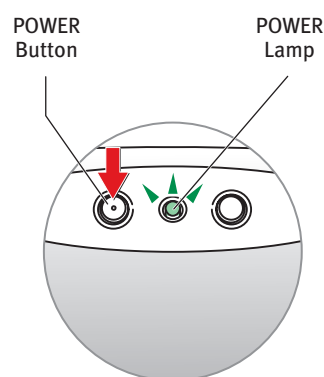


Shipping Tape

- Plug the power cord into the back of the printer and connect the other end to a power outlet.



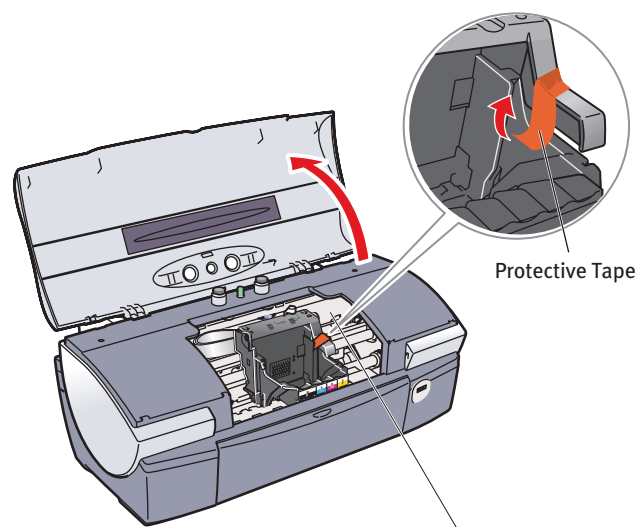
- Press the POWER button.



POWER Button

POWER Lamp

- Open the front cover. The print head holder automatically moves to the center. Remove the protective tape.



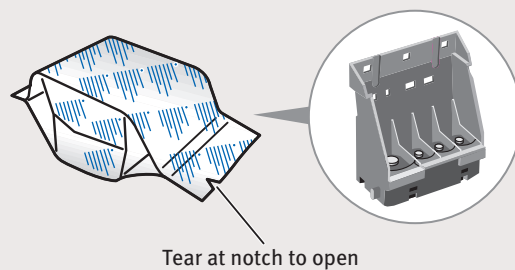
Protective Tape

- Write down the serial number located to the right of the print head holder. You will need this later to register the product.

Serial Number

3 Install the Print Head

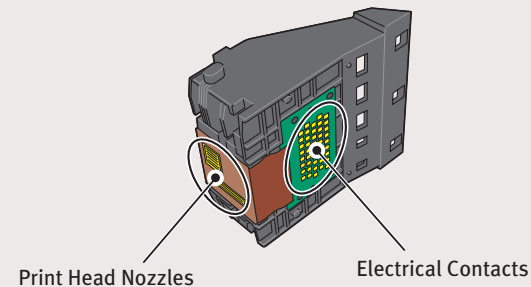
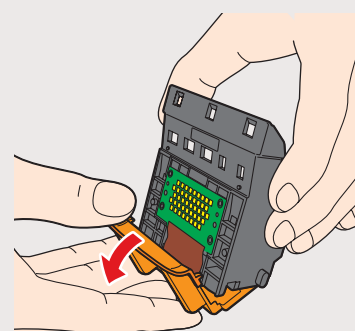
- Remove the print head from its package.



Tear at notch to open

- Remove the orange protective cap from the print head nozzles.

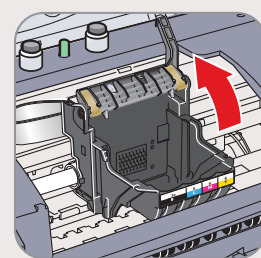
NOTE: Do not touch the print head nozzles or electrical contacts.



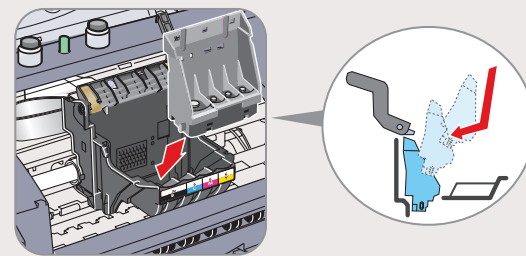
Print Head Nozzles

Electrical Contacts

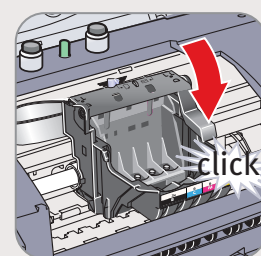
- Raise the lock lever on the printer.



- Slide the print head into the holder. The print head will rest at a slight angle.

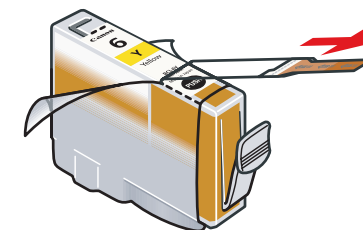


- Lower the lock lever and press it down until it clicks into place.



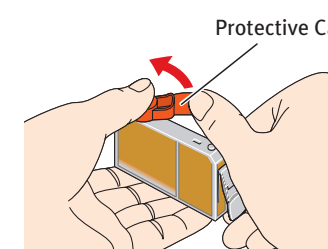
4 Install the Ink Tanks

- Peel back the orange tab and completely remove the plastic wrapper from the Yellow Ink Tank (BCI-6Y).



- Twist off and discard the orange protective cap.

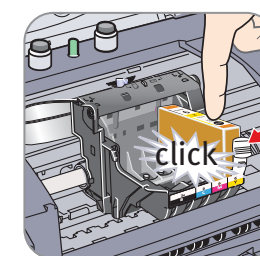
NOTE: Avoid ink at the bottom of the tank.



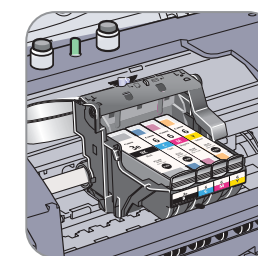
- Insert the ink tank into the correct slot. (Refer to the color guide on the print head holder).

Press down until the ink tank clicks into place.

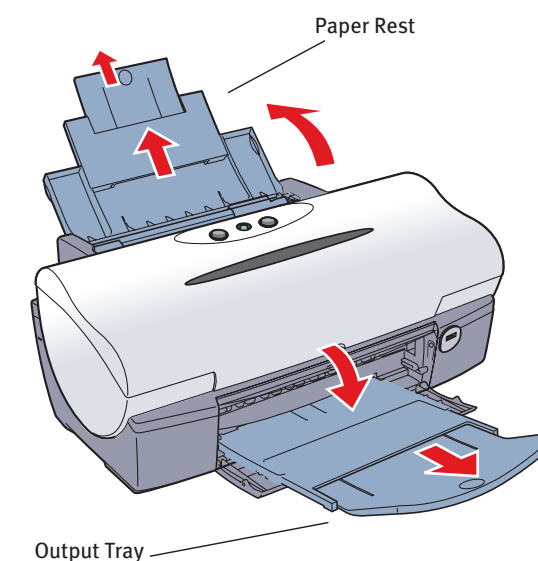
IMPORTANT: For correct printer operation, make sure the ink tanks are secure in slots.



- Insert the remaining ink tanks into their assigned slots.



- Close the front cover and extend the paper rest and paper output tray.



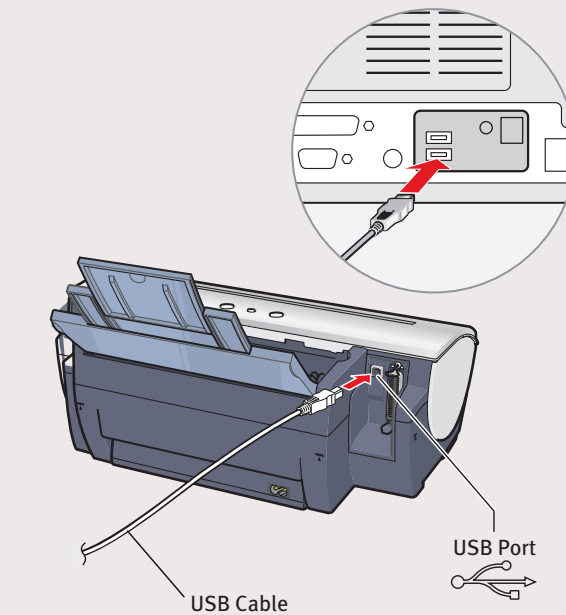
NOTE: The printer will perform a print head cleaning once the cover is closed.

5 Connect the Printer and Load Paper

IMPORTANT: Be sure the printer is off before continuing, or the computer will attempt to install the printer driver before the printer is ready.

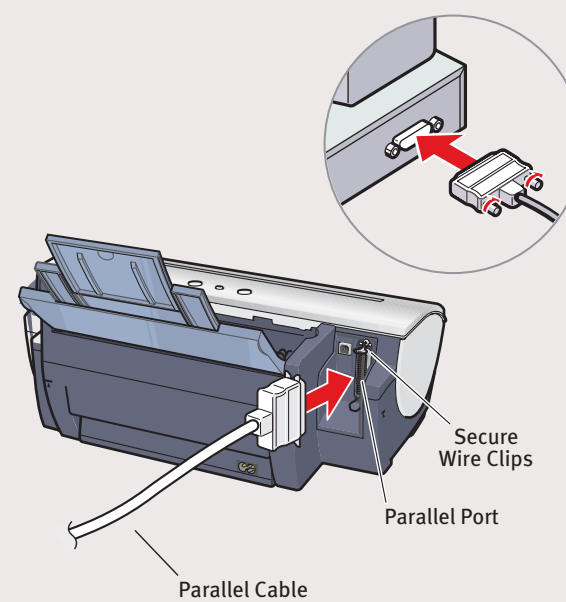
For USB Port:

- TURN THE PRINTER OFF.
- Connect one end of the USB cable to the computer, the other to the printer.

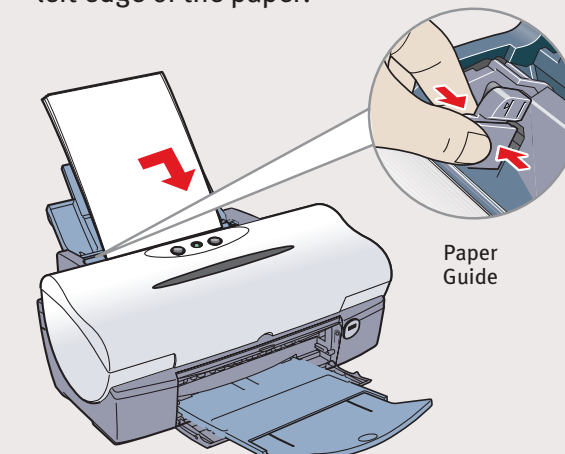


For Parallel Port:

- TURN THE PRINTER OFF.
- Connect one end of the parallel cable to the computer, the other to the printer.



- Pinch the paper guide and slide it to the left. Load a sheet of blank paper in the paper rest. Slide the guide toward the left edge of the paper.

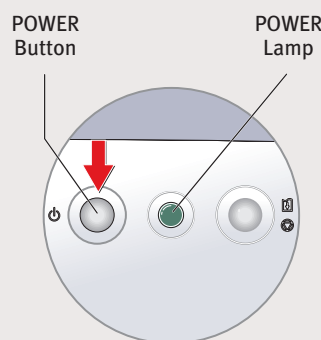


Continue with Step 6 on side two.



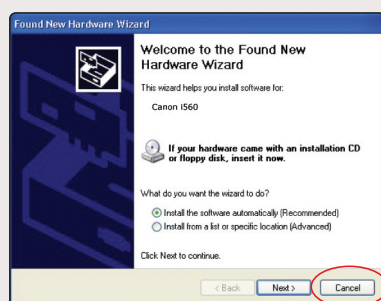
6 Windows® Printer Driver Installation and Print Head Alignment

- 1 Be sure to **TURN THE PRINTER OFF** before continuing.



NOTE: For Windows® XP or Windows 2000, log on to Windows as a member of the Administrators group before continuing.

IMPORTANT: If you see the Found New Hardware Wizard, click **Cancel**.

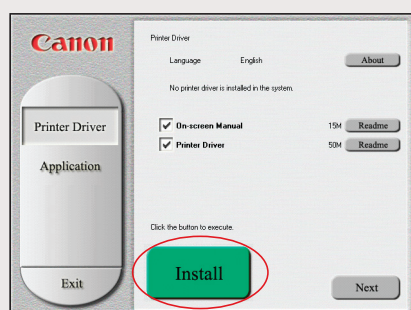


- 2 Close any open software applications, then insert the “Setup Software & User's Guide” CD-ROM. The setup program should run automatically.

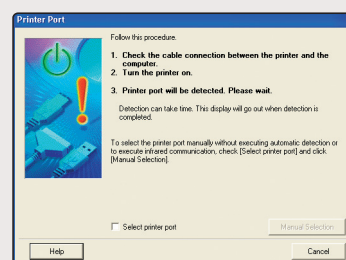
NOTE: If the setup program does not run, click **Start**, then **Run**, then type **D:\msetup.exe**, where **D** is your CD-ROM drive.

- 3 Read the License Agreement, then click **Yes** to continue.

- 4 When the main menu appears, click **Install**.

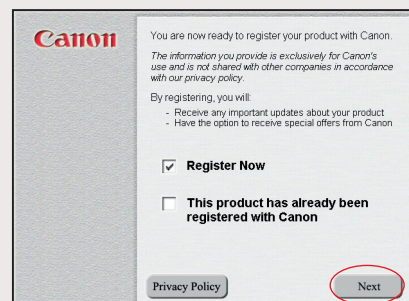


- 5 When the Printer Port window appears, **TURN THE PRINTER ON**. The software will begin identifying the printer port being used.



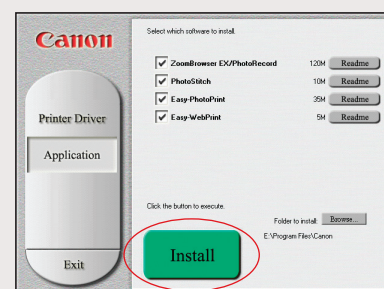
IMPORTANT: If your computer cannot detect a printer port, click **Help** and refer to the online instructions.

- 6 Register your product to ensure product support. Follow the on-screen instructions.



- 7 When the Terminate installation window appears, click **OK**.

- 8 When the software menu appears, click **Install** and follow the on-screen instructions.



- 9 When the Terminate installation window appears, click **OK**, then **Exit**.

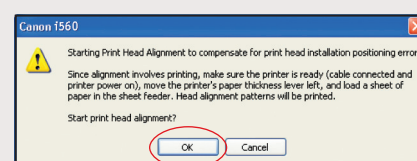
- 10 Click **Yes** when you are prompted to restart your computer.

- 11 Start the print head alignment procedure.
 - a. For Windows XP/2000 click **Start**, select **Control Panel, Printers and Other Hardware**, then **Printers and Faxes**.
 - b. Right-click the **i560** icon, then click **Printing Preferences**.

NOTE: For Windows 98/Me click **Start**, then select **Settings, Printers**. Right-click the **i560** icon, then click **Properties**.

- c. Click the **Maintenance** tab, then click on the **Print Head Alignment** icon.

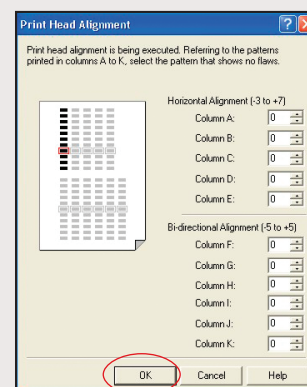
- d. When asked to start print head alignment, click **OK** and follow the on-screen instructions.



- e. Click **YES** when prompted if the pattern printed successfully.

- 12 Compare the different patterns for each color on the printout.

- 13 For each color on the test printout, enter the number in the Print Head Alignment window that corresponds with the smoothest looking test pattern.



- 14 Click **OK** when finished.

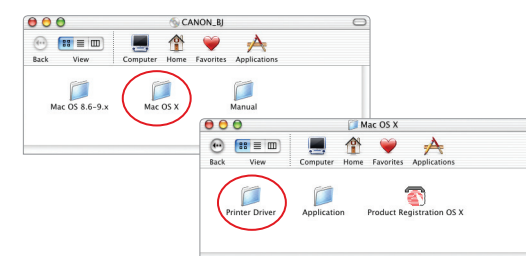
- 15 Click **OK** to exit the Maintenance tab. Print head alignment is now complete.

6 Macintosh® Printer Driver Installation and Print Head Alignment

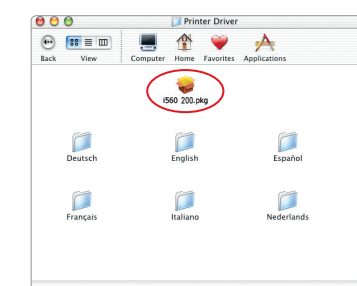
NOTE: For Mac OS 8.6 to 9.x printer driver instructions, refer to the "Appendix" of the *Quick Start Guide*.

- 1 Turn on your Mac and your printer and insert the “Setup Software & User's Guide” CD-ROM.

- 2 Double-click the CD-ROM icon, then the **Mac OS X** folder, then the **Printer Driver** folder.



- 3 Double-click the **i560 200.pkg** icon.

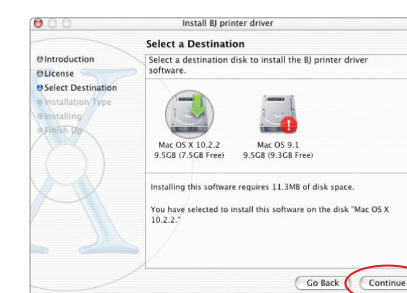


- 4 When the “Authenticate” screen appears, enter your administrator name and password, then click **OK**.

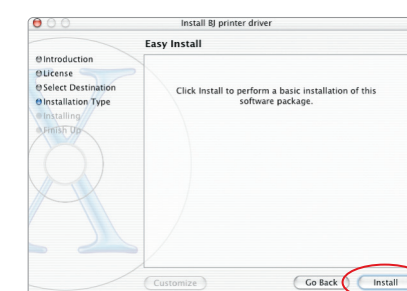
- 5 When the “Welcome to the BJ printer driver Installer” screen appears, click **Continue**.

- 6 Read the Software License Agreement and click **Continue**, then click **Agree**.

- 7 Select a destination for the printer driver to be installed. Then click **Continue**.

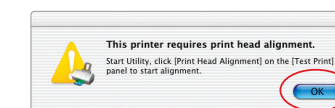


- 8 Click **Install**. When a message asking for your confirmation to proceed with the installation, click **Continue Installation**.



- 9 When the message “The software was successfully installed” appears, click **Restart**.

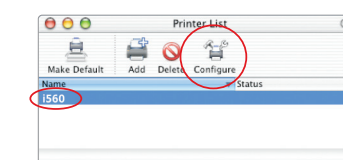
- 10 When a message asking you to align the print head appears, click **OK**.



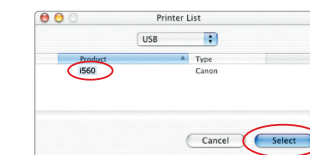
- 11 Start the print head alignment procedure.

- a. Double-click the **Macintosh HD** icon, then **Applications** folder. Double-click the **Utilities** folder, then the **Print Center** icon.

- b. When the Printer List screen appears, select **i560**, then click the **Configure** icon.

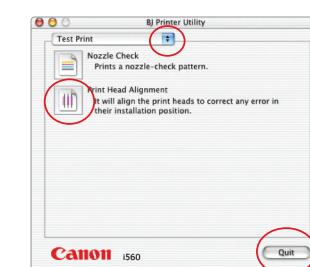


- c. Select **i560** and click **Select**.



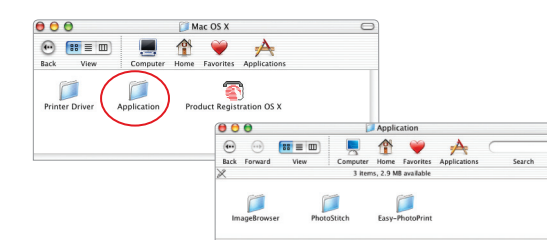
- d. Click the down-arrow to select **Test Print**.

- e. Click the **Print Head Alignment** icon and follow the on-screen instructions.



- 12 Click **Quit** to exit the BJ Printer Utility. Print head alignment is now complete.

- 13 Access your CD-ROM again. From the **Application** folder, double-click on the software to be installed.



- 14 Follow the on-screen instructions. When the “Installation has finished” screen appears, click **OK**.

- 15 Register your product to ensure product support. Double-click on the **Product Registration** icon, found in the **Mac OS X** folder. Follow the on-screen instructions.