



Unpack the Machine

- Please confirm the included items against the illustration printed on the lid of the packing box.
- A USB cable is necessary to connect the machine with your computer.

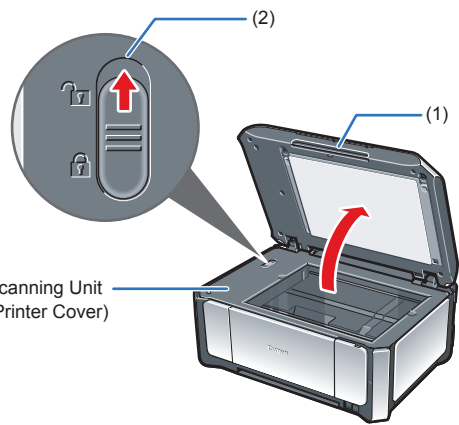
Important
When cleaning the exterior of the machine, use a soft cloth to wipe it gently. For details, refer to "Cleaning Your Machine" in the Quick Start Guide.

1 Prepare the Machine

Important
Before turning on the machine, remove all the orange shipping tapes.

1 Unlock the Scanning Unit (Printer Cover).

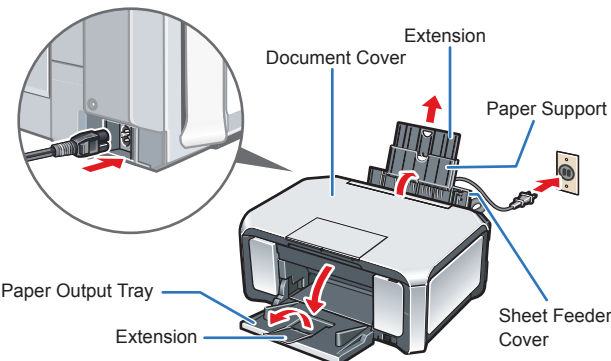
- (1) Open the Document Cover.
- (2) Move the Scanner Lock Switch towards the release mark to unlock the Scanning Unit (Printer Cover).



Caution

- Make sure to unlock the Scanning Unit (Printer Cover) before turning on the machine.
- Before transporting the machine, always lock the Scanning Unit (Printer Cover) by moving the Scanner Lock Switch towards the lock mark.

2 Plug the power cord in the back of the machine and connect the other end to the wall outlet. Next, open the Sheet Feeder Cover, pull out the Paper Support and the Extension, then open the Paper Output Tray and the Extension.

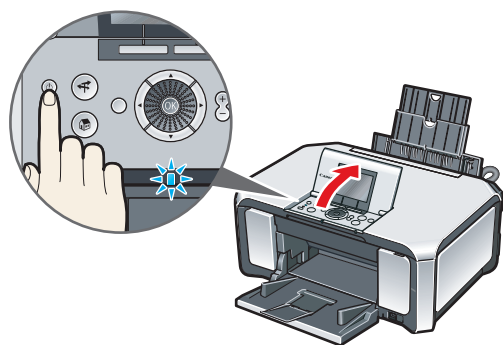


Important

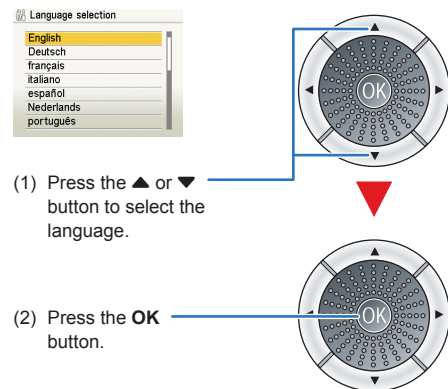
- Make sure that the Document Cover is closed.
- Do NOT connect the USB cable at this stage.

3 Open the Operation Panel, then press the ON/OFF button to turn on the machine.

The machine will initialize. Wait until the Power lamp stops flashing and remains lit blue.



4 Use the ▲ or ▼ button on the Operation Panel to select the language for the LCD, then press the OK button.

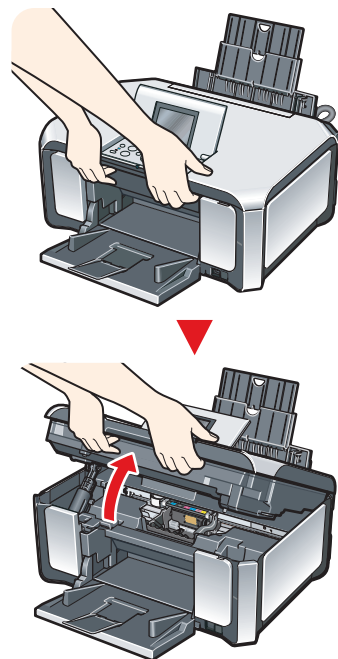


- (1) Press the ▲ or ▼ button to select the language.
- (2) Press the OK button.

Important
If an unintended language is displayed on the LCD, press the Back button on the Operation Panel to return to the Language selection screen.

Once the message "Install the print head and set the ink tank." appears, go to 5.

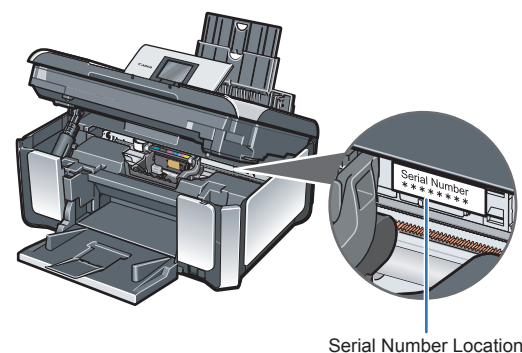
5 Lift the Scanning Unit (Printer Cover) until it locks into place. The Print Head Holder moves to the center.



Caution
For your safety, always firmly grip the areas illustrated when lifting the Scanning Unit (Printer Cover).

Important
If the Document Cover is opened, you cannot open the Scanning Unit (Printer Cover). Be sure to open the Scanning Unit (Printer Cover) with the Document Cover closed.

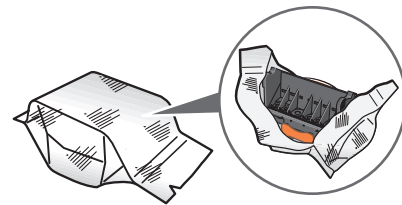
6 Write down the serial number located inside the machine. You will need this to register your product.



Serial Number Location

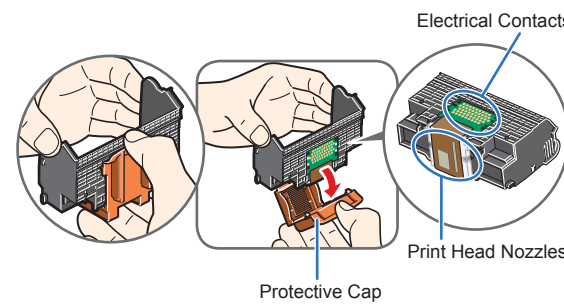
2 Install the Print Head

1 Remove the Print Head from its package.



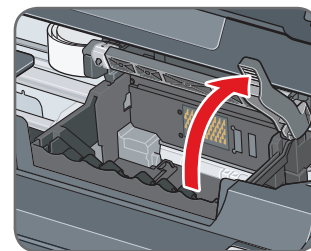
Caution
There may be some transparent or light blue ink on the inside of the bag the print head comes in, or the inside of the protective cap - this has no effect on print quality. Be careful not to get ink on yourself when handling these items.

2 Remove the orange protective cap from the Print Head and discard it.

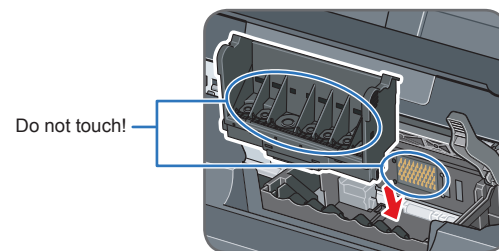


Important
Do not touch the print head nozzles or the electrical contacts.

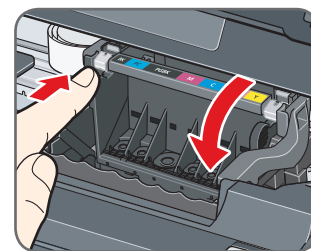
3 Firmly raise the Print Head Lock Lever until it stops. The Print Head Lock Lever may feel heavy.



4 Insert the Print Head.



5 Push the Print Head to hold it in place, and lower the Print Head Lock Lever.

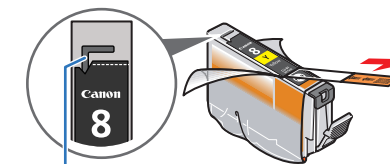


Important
If the Scanning Unit (Printer Cover) is left open for more than 10 minutes, the Print Head Holder moves to the right. Close and reopen the Scanning Unit (Printer Cover) to return the Holder to the center.

3 Install the Ink Tanks

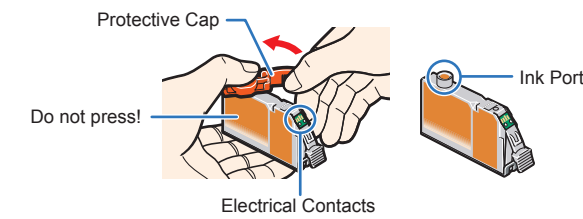
Note
For the ink tanks compatible with this machine, refer to the back cover of the Quick Start Guide.

1 Pull the orange tape in the direction of the arrow to peel off the protective film and remove the film completely.



If the air hole is blocked with the remaining film, ink may leak out or may not eject properly.

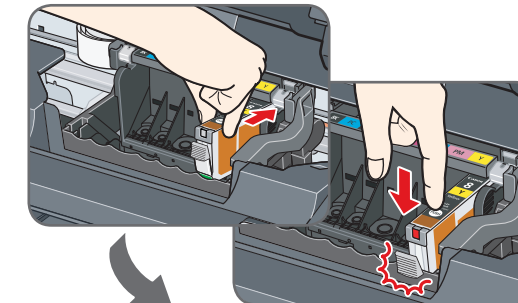
2 Twist off and discard the orange protective cap located on the bottom of the ink tank.



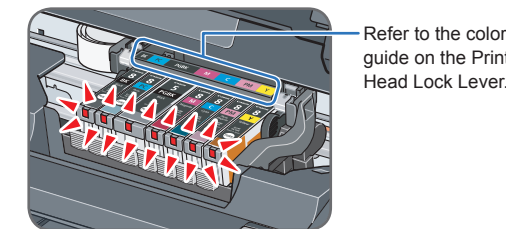
Important

- Do not touch the electrical contacts.
- Do not touch the ink port.

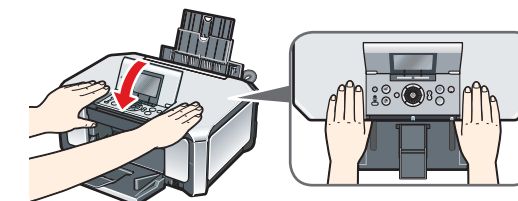
3 Insert the ink tank into the right-hand slot and press the mark on the ink tank until it clicks into place.



4 Make sure the ink lamp lights red.



5 Close the Scanning Unit (Printer Cover).

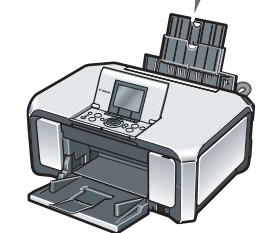
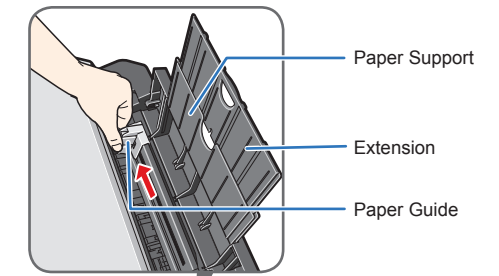


Caution
For your safety, always firmly grip the areas illustrated when closing the Scanning Unit (Printer Cover).

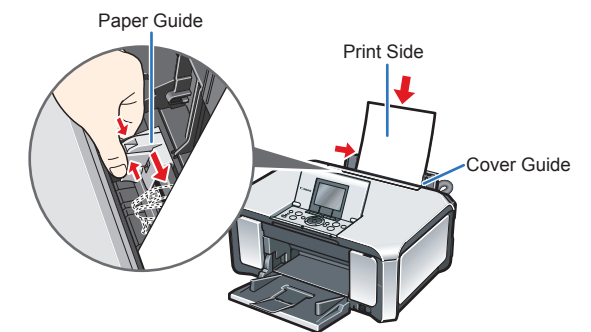
Important
The machine starts the preparatory operation. It takes about 2 minutes. Do not start another operation until the machine has stopped making operating noises.

4 Align the Print Head

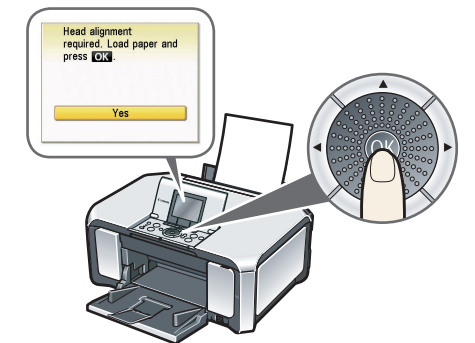
1 Pinch the Paper Guide and slide it to the left end.



2 Load a sheet of A4 or Letter-sized plain paper into the Rear Tray, align the paper with the Cover Guide on the right side, then slide the Paper Guide against the paper.

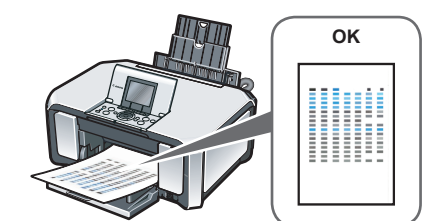


3 Make sure that Yes is selected in the message requesting head alignment, then press the OK button.



Note
Print Head alignment takes about 6 minutes to complete. Do not start another operation until the machine has stopped making operating noises.

The pattern is printed. And Print Head is aligned automatically.



Note

- The pattern is printed in black and blue.
- When Automatic Print Head Alignment cannot be executed correctly, the message "Auto head align has failed." is displayed on the LCD. Refer to "An Error Message is Displayed on the LCD" in the Quick Start Guide.

Hardware setup and Print Head alignment are complete.

Windows® Software Installation

Windows

Note

- The screens below refer to Windows Vista™ operating system Ultimate Edition (hereafter referred to as "Windows Vista") installation. Screens may vary depending on the operating system you are using.
- Log into a user account with the administrator privilege.
- Before installing the software, disable all anti-virus programs and automatically loading programs.
- A message asking for your confirmation to restart your computer may appear during the installation process. If this message is displayed, follow the on-screen instructions and click **OK**.
- The installation resumes from where it left off when your computer has been restarted.
- If the computer is restarted during installation, do not remove the *Setup CD-ROM* during restarting.

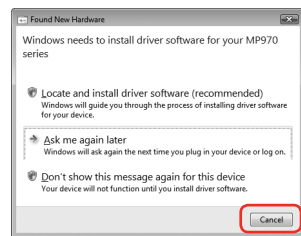
1 Be sure to **TURN THE MACHINE OFF** before continuing.

- Press the **ON/OFF** button.
- Make sure that the **Power** lamp stops flashing.

2 Turn the computer on and start Windows.

Important

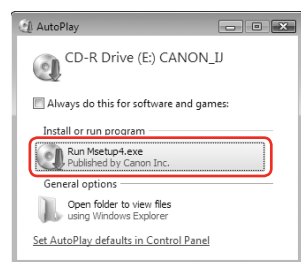
If the **Found New Hardware** or **Found New Hardware Wizard** screen appears automatically, remove the USB cable connected to your computer. Click **Cancel** to quit the screen. In Windows Vista, the screen may close automatically when the USB cable is unplugged. Then turn off the machine and proceed from step **3** to install the software.



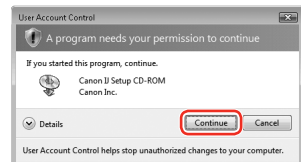
3 Insert the *Setup CD-ROM*. The setup program should run automatically.

In Windows Vista, go to Step **4**. In Windows XP and Windows 2000, go to Step **6**.

4 If the **AutoPlay** screen appears, click **Run Msetup4.exe**.



5 If the **User Account Control** screen appears, click **Continue**. If the same screen reappears in subsequent steps, click **Continue**.



6 When the main menu appears, click **Easy Install**.

The MP Drivers, On-screen Manuals, and application software are installed automatically.



Note

If you want to select particular items to install, click **Custom Install** and follow the on-screen instructions to proceed with the installation.

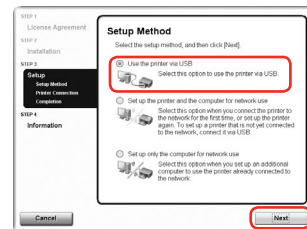
7 When the list of applications to install appears, confirm the contents and click **Install**.

Note

Move the cursor over items to display explanations of each application.

8 Read the License Agreement carefully and click **Yes**. The software installation screen may appear during the installation process. Follow the on-screen instructions to install the software.

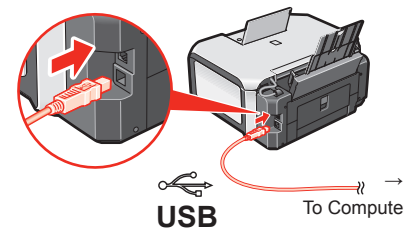
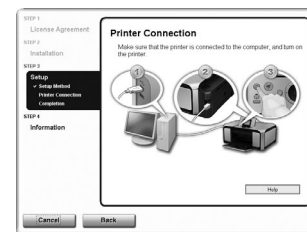
9 When the **Setup Method** screen appears, select **Use the printer via USB**, then click **Next**.



10 When the **Printer Connection** screen appears, connect one end of the USB cable to the computer, the other to the machine, then **TURN THE MACHINE ON**. The software will begin identifying the printer port being used.

Important

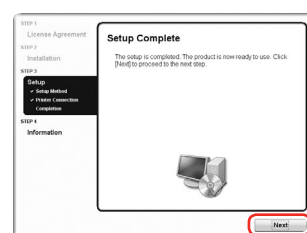
If you cannot go to the next procedure after three minutes, refer to "Cannot Install the MP Drivers" in the *Quick Start Guide*.



When using Windows 2000:

When you connect the machine to the computer with a USB cable, a message asking for your confirmation to restart your computer is displayed. Click **Yes**. Then when an error message is displayed, click **OK** to proceed with the installation.

11 When the **Setup Complete** screen appears, click **Next**.



12 When the **User Registration** screen appears, click **Next**.

Note

To register later, click **Cancel** and go to Step **13**. After software installation is complete, double-click on the desktop.

Follow the on-screen instructions to register your product. You will need your product serial number, which is located on the inside of the machine. See Step 1- **6** on the front page.

13 When the **PIXMA Extended Survey Program** screen appears, confirm the message. We would appreciate it if you would take part in this program regarding the use of Canon printers. If you can agree, click **Agree**.

14 When the **Installation completed successfully** screen appears, click **Exit**.

After clicking **Exit**, remove the CD-ROM.

If **Restart** is displayed, make sure that the **Restart the system now (recommended)** check box is selected, then click **Restart**. Remove the CD-ROM after clicking **Restart** and restarting the computer.

Note

Keep the CD-ROM in a safe place in case you need to reinstall the software.

Software installation is now complete.

Macintosh® Software Installation

Macintosh

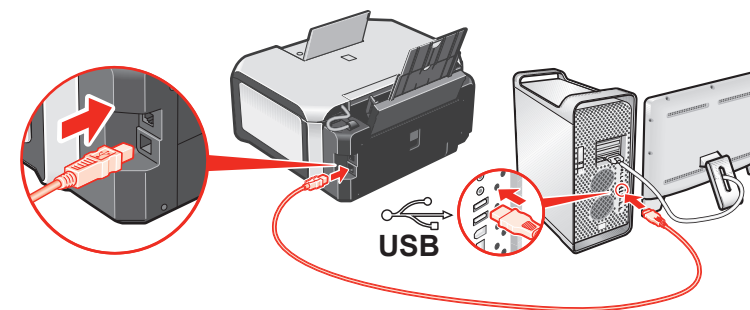
Note

- Since Mac® OS 9, Mac OS X Classic environments, or Mac OS X v.10.2.7 or earlier are not supported, do not connect the machine to these.
- The screens below refer to Mac OS X v.10.4.x installation. Screens may vary depending on the operating system you are using.
- Log on as an Administrator.
- Before installing the software, disable all anti-virus programs and automatically loading programs.

1 Connect one end of the USB cable to the computer and the other to the machine.

Note

Make sure the machine is turned on.



2 Turn on your Mac and insert the *Setup CD-ROM*.

Note

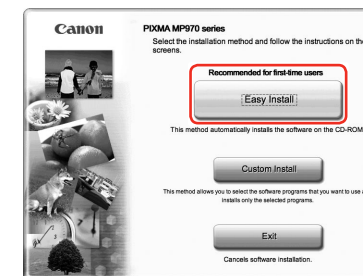
If the CD-ROM folder does not open automatically, double-click the CD-ROM icon on the desktop.

3 Double-click the **Setup** icon.

4 When the **Authenticate** screen appears, enter your administrator name and password. Click **OK**. If you do not know your administrator name or password, click , then follow the on-screen instructions.

5 When the main menu appears, click **Easy Install**.

The MP Drivers, On-screen Manuals, and application software are installed automatically.



Note

If you want to select particular items to install, click **Custom Install** and follow the on-screen instructions to proceed with the installation.

6 When the list of applications to install appears, confirm the contents, then click **Install**.

Note

Move the cursor over items to display explanations of each application.

7 Read the License Agreement carefully and click **Yes**. The software installation screen may appear during the installation process. Follow the on-screen instructions to install the software.

8 When the **Setup Complete** screen appears, click **Next**.



9 When the **User Registration** screen appears, click **Next**.

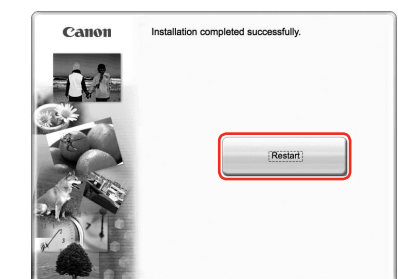
Note

To register later, click **Cancel** and go to Step **10**. After software installation is complete, double-click on the desktop.

Follow the on-screen instructions to register your product. You will need your product serial number, which is located on the inside of the machine. See Step 1- **6** on the front page.

10 When the **Installation completed successfully** screen appears, click **Restart**.

Remove the CD-ROM after clicking **Restart** and restarting the computer.



Note

Keep the CD-ROM in a safe place in case you need to reinstall the software.

When the computer restarts, the Canon IJ Network Tool will start up automatically.

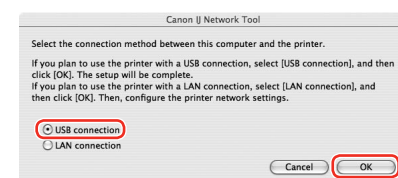
When using Mac OS X v.10.2.8 to v.10.3.3:

Restarting the computer while connected to the machine may cause the machine not to be detected. To resolve this, either unplug the USB cable then plug it back in again, or turn the machine off then back on again.

Note

When using Mac OS X v.10.2.8 to v.10.3.x, before using the Operation Panel on the machine to save scanned originals to the computer, it is necessary to select **MP Navigator EX** as the launch application on **Image Capture** under **Applications**. For details, refer to "Scanning Images" in the *User's Guide* on-screen manual.

11 When the **Canon IJ Network Tool** screen appears, select **USB connection**, then click **OK**.



Software installation is now complete.