

Canon

PIXMA GM4000 series

Getting Started

คำแนะนำเริ่มต้น

Mari Memulai

Hướng dẫn bắt đầu

入門指南

입문 가이드



<https://ij.start.canon>



Read **Safety and Important Information** (addendum) first.

โปรดอ่าน **ข้อมูลความปลอดภัยและสำคัญ** (ในภาคผนวก) ก่อน

Baca **Keamanan dan Informasi Penting** (lampiran) terlebih dahulu.

Trước tiên đọc **Thông tin an toàn và quan trọng** (phụ lục).

請首先閱讀「**安全與重要資訊**」(附錄)。

안전 및 중요 정보(부록)를 먼저 읽으십시오.



QT62930V01



Installing the Printer.....page 1

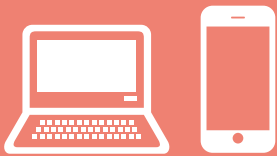
การติดตั้งเครื่องพิมพ์.....หน้า 1

Memasang Pencetak.....halaman 1

Cài đặt máy in.....trang 1

安裝印表機.....第1頁

프린터 설치하기.....1페이지



Connecting to a Computer, Smartphone or Tablet.....page 4

การเชื่อมต่อกับคอมพิวเตอร์ สมาร์ทโฟน หรือแท็บเล็ต.....หน้า 4

Menghubungkan ke Komputer, Ponsel Pintar atau Tablet.....halaman 4

Kết nối với máy tính, smartphone hoặc máy tính bảng.....trang 4

連接至電腦、智慧型手機或平板.....第4頁

컴퓨터, 스마트폰 또는 태블릿에 연결하기.....4페이지

Holding the Printer

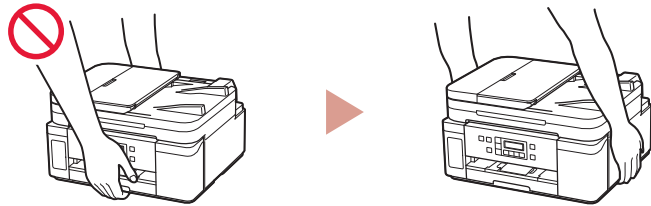
การถือเครื่องพิมพ์

Memegang Pencetak

Giữ máy in

握持印表機

프린터 들기



Instructional Videos

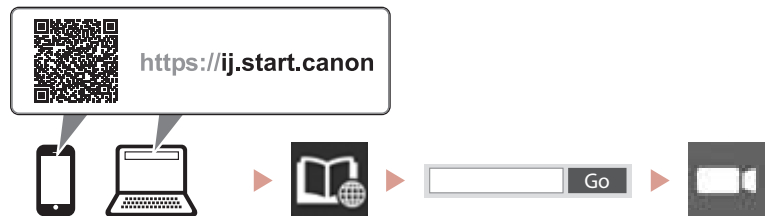
วิดีโอแนะนำวิธีใช้

Video Instruksi

Video hướng dẫn

說明視訊

사용 설명 동영상



Setting Up the Printer

Online Setup
<https://ij.start.canon>



1. Box Contents

● Print head

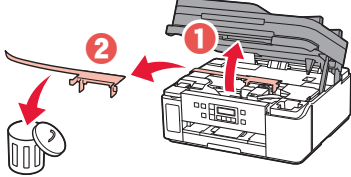


- Ink bottle
- Power cord
- Setup CD-ROM for Windows
- Safety and Important Information
- Getting Started (this manual)

2. Removing Packing Materials



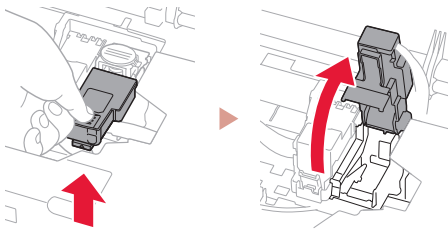
- 1 Remove and dispose of any packing materials and orange tape.
- 2 Open the scanning unit / cover, remove and dispose of the orange tape and protective material inside.



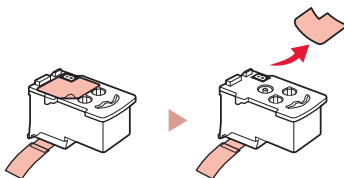
3. Installing the Print Head



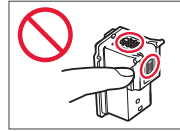
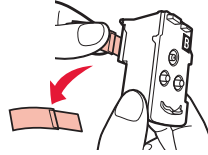
- 1 Open the print head locking cover on the right.



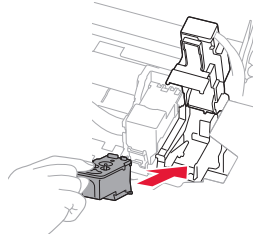
- 2 Take out the print head from the package and remove the label.



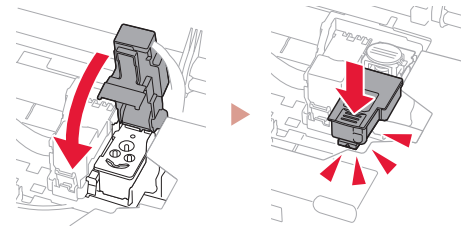
- 3 Remove the protective tape.



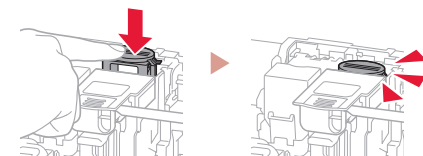
- 4 Insert the print head into the print head holder.



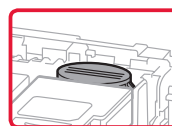
- 5 Close the print head locking cover and press down until it clicks.



- 6 Press down the joint button completely until it clicks.



Check!



Setting Up the Printer

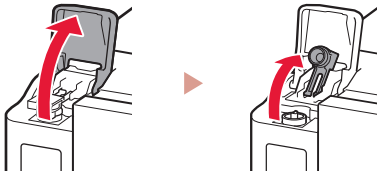
4. Pouring Ink



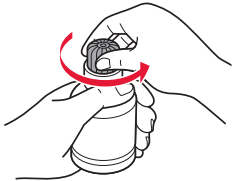
Important

This product requires careful handling of ink. Ink may splatter when the ink tanks are filled with ink. If ink gets on your clothes or belongings, it may not come off.

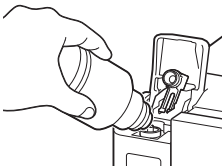
- 1 Open the ink tank cover and the tank cap.



- 2 Hold the ink bottle upright and gently twist the bottle cap to remove.

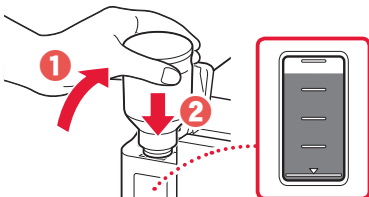


- 3 Align the nozzle of the ink bottle with the inlet.

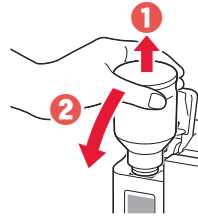


- 4 Slowly stand the ink bottle upside down and push down to pour the ink.

- If the ink does not pour, gently remove the ink bottle and try again.



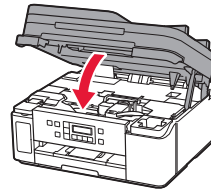
- 5 Gently remove the ink bottle from the inlet.
 - Be careful not to spill the ink.



- 6 Replace the tank cap **securely**, and then close the ink tank cover.



- 7 Close the scanning unit / cover.

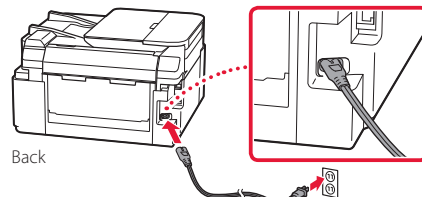


Caution
Watch your fingers.

5. Turning on the Printer



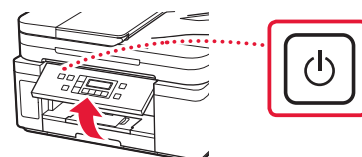
- 1 Connect the power cord.



Important

At this time, do not connect any other cables.

- 2 Open the operation panel and press the **ON** button.



- 3 When the following screen appears, use the ◀ and ▶ buttons to select a language, and then press the **OK** button.



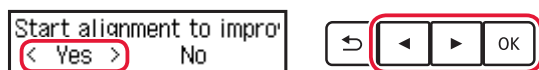
▶▶▶ **Important**

If an error appears on the screen, see "If an error message (support code) appears on the screen" on page 3 and follow the instructions.

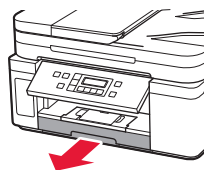
6. Loading Paper



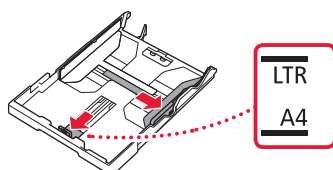
- 1 When the following screen appears, use the ◀ and ▶ buttons to select **Yes**, and then press the **OK** button.



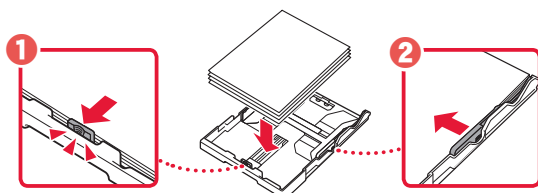
- 2 Remove the cassette from the printer.



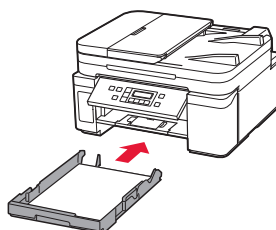
- 3 Slide apart the paper guides.
- Slide the right paper guide to the right edge. Align the front paper guide with the Letter or A4 mark.



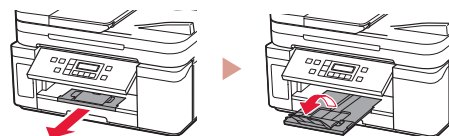
- 4 Load paper.
- Load 2 or more sheets of Letter or A4 sized plain paper with the print side facing down.
 - Place the paper against the front paper guide, and align the right paper guide to the width of the paper.



- 5 Replace the cassette.

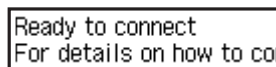
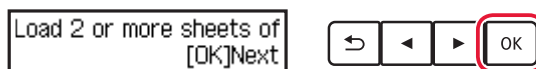


- 6 Pull out the paper output tray.

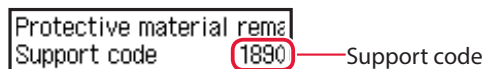


- 7 Follow the on-screen instructions, and then press the **OK** button.

- Check that **Ready to connect** appears on the printer's screen.



? If an error message (support code) appears on the screen



Check the support code, and then follow the instructions if the displayed code is written below.

- 1890**
The protective materials are not removed.
→ "2. Removing Packing Materials" on page 1
- 1470**
The print heads are not installed correctly.
→ "3. Installing the Print Head" on page 1
- 1471**
No print heads are installed.
→ "3. Installing the Print Head" on page 1
- 1642**
There may be insufficient ink.
→ "4. Pouring Ink" on page 2

For all other cases, refer to the **Online Manual**.

Setting Up the Printer

What device are you connecting?



Computer



Computer and
smartphone



Smartphone



To use your printer without connecting to any other devices. →7-c

7-a

Connecting to a Computer

If you are using multiple computers, perform these steps on each computer.

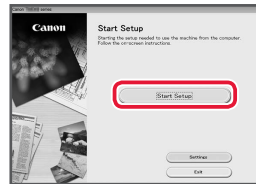


- 1 Access the Canon website from a computer.
<https://ij.start.canon> 
- 2 Select  **Set Up**.
- 3 Enter your printer's model name and click **Go**.
- 4 Click **Start**.
- 5 Click **If you have already prepared your printer, go to Connect**.

▶▶▶ Note

The following steps are for Windows (except Windows 10 in S mode).

- 6 Click **Download**.
- 7 Run the downloaded file.
- 8 Click **Start Setup**.



- 9 Follow the on-screen instructions.
 - These operations may take some time.
 - To connect to a smartphone as well, see "7-b. Connecting to a Smartphone" on page 5.

Using the Setup CD-ROM for Windows

Double click **EasySetup.exe** in the CD-ROM, and then continue from step 3. If you do not have an internet connection, open the **win** folder in the CD-ROM and double click **SETUP.exe**. This will install the printer driver.

7-b Connecting to a Smartphone

If you are using multiple smartphones, perform these steps on each smartphone.



Prepare the following before starting.

- 1 Enable the Wi-Fi setting on your smartphone.
- 2 Connect your smartphone to the wireless router (if you have a wireless router).

Refer to your smartphone and wireless router manuals for more details.

1 Install the "Canon PRINT Inkjet/SELPHY" app on your smartphone.

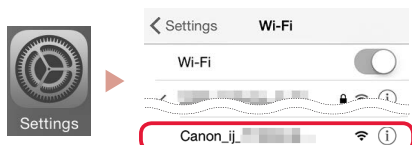
- Scan the QR code shown on the right to access the Canon website, and then download the app.



2 Open your smartphone's Wi-Fi settings. Tap the network name (SSID) that starts with "Canon_ij_".

If "Canon_ij_" does not appear, proceed to step 3.

(Example of iOS screen)



3 Open the installed app.



4 Follow the on-screen instructions in the app to add your printer.

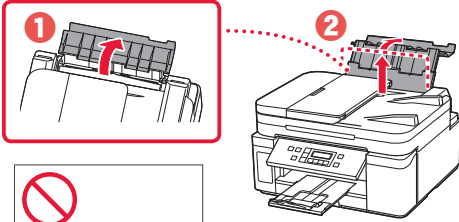
Once you have added your printer, you can print from your smartphone.

7-c Do Not Connect To A Device

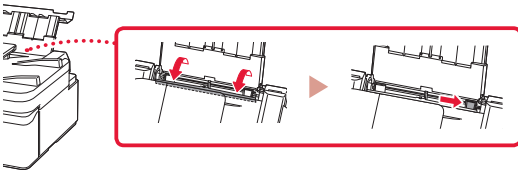
- 1 Press the **Stop** button.
- 2 Select **Do not connect**, and then press the **OK** button.
- 3 Select **Yes**, and then press the **OK** button.

Loading Paper into the Rear Tray

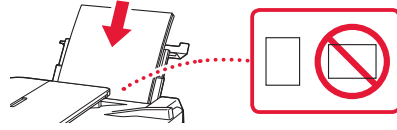
- 1 Open the rear tray cover and extend the paper support.



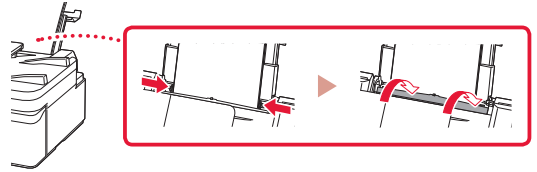
- 2 Open the feed slot cover and slide the right-hand side paper guide to the far right.



- 3 Load several sheets of paper with the print side facing up.



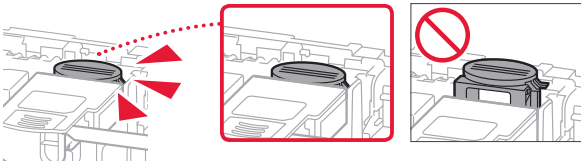
- 4 Align the paper guide to the paper, and then close the feed slot cover.
- Follow the on-screen instructions to set information for the loaded paper.



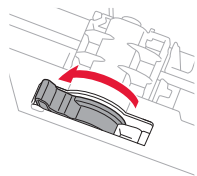
Transporting Your Printer

When relocating the printer, make sure of the following. Refer to the **Online Manual** for details.

Check that the joint button is pressed down completely to avoid ink leaks.

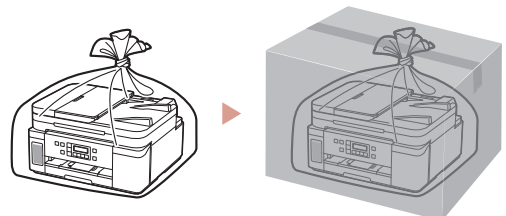


Check that the position of the ink valve lever is closed.



Pack the printer in a plastic bag in case ink leaks.

- Pack the printer in a sturdy box so that it is placed with its bottom facing down, using sufficient protective material to ensure safe transport.
- Do not tilt the printer. Ink may leak.
- Please handle with care and ensure the box remains flat and NOT turned upside down or on its side, as the printer may be damaged and ink in the printer may leak.
- When a shipping agent is handling transport of the printer, have its box marked "THIS SIDE UP" to keep the printer with its bottom facing down. Mark also with "FRAGILE" or "HANDLE WITH CARE".



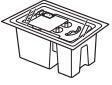
การตั้งค่าเครื่องพิมพ์

การตั้งค่าออนไลน์
<https://ij.start.canon>



1. สิ่งที่อยู่ภายในกล่อง

• หัวพิมพ์

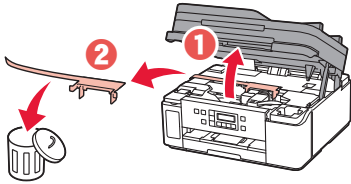


- ขวดหมึก
- สายไฟ
- Setup CD-ROM สำหรับ Windows
- ข้อมูลความปลอดภัยและสำคัญ
- คำแนะนำเริ่มต้น (คู่มือนี้)

2. การเอาวัสดุห่อหุ้มออก



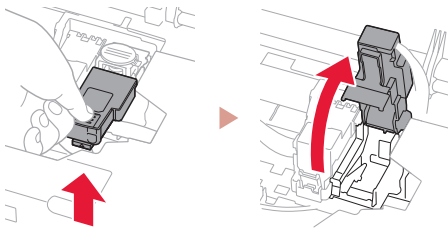
- 1 เอาวัสดุห่อหุ้มและเทปสีส้มออกแล้วทิ้งไป
- 2 เปิดหน่วยการสแกน/ฝาครอบ เอาเทปสีส้มและวัสดุป้องกันที่อยู่ภายในออกแล้วทิ้งไป



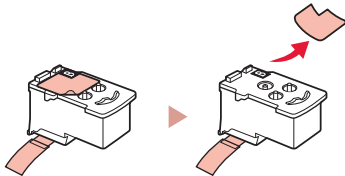
3. การติดตั้งหัวพิมพ์



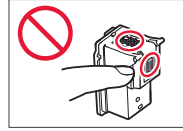
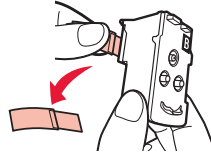
- 1 เปิดฝาครอบล็อกหัวพิมพ์ทางด้านขวา



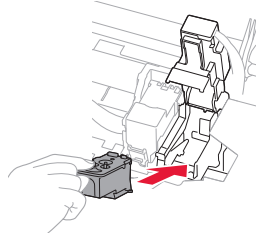
- 2 นำหัวพิมพ์ออกมาจากห่อและดึงป้ายออก



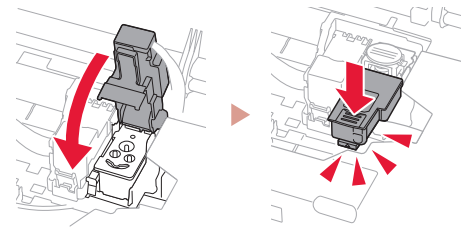
- 3 ดึงเทปป้องกันออก



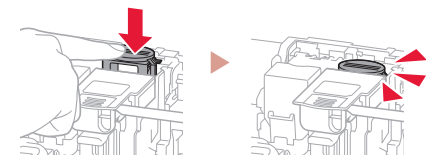
- 4 ใส่หัวพิมพ์เข้าไปในตัวยึดหัวพิมพ์



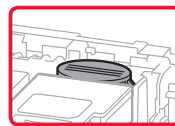
- 5 ปิดฝาครอบล็อกหัวพิมพ์และกดลงจนกระทั่งคลิกเข้าที่



- 6 กดปุ่มเชื่อมต่อจนสุดจนกระทั่งคลิกเข้าที่



ตรวจสอบ!



การตั้งค่าเครื่องพิมพ์

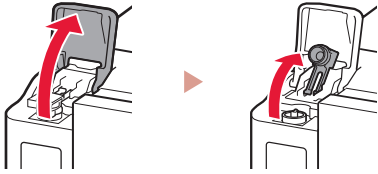
4. การเทหมึก



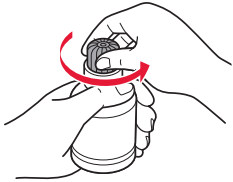
»»» ข้อสำคัญ

ผลิตภัณฑ์นี้ต้องใช้ความระมัดระวังในการจัดการหมึก หมึกอาจกระเด็นเมื่อตลับหมึกถูกเติมด้วยหมึก หากหมึกเปื้อนเสื้อผ้าหรือของใช้ของคุณ อาจทำความสะอาดไม่ออก

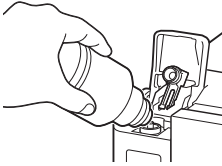
1 เปิดฝาครอบตลับหมึกและแค็ปตลับ



2 ถือขวดหมึกให้ตั้งตรงและค่อยๆ บิดแค็ปขวดเพื่อถอดออก

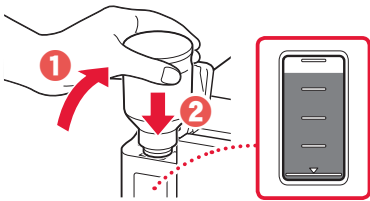


3 จัดหัวฉีดของขวดหมึกให้ตรงกับช่องเติม



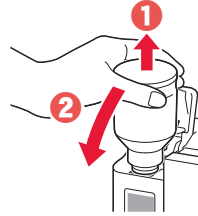
4 วางขวดหมึกคว่ำลงข้างๆ และดันลงเพื่อเทหมึก

- หากหมึกไม่ไหลออกมา ให้ค่อยๆ เอาขวดหมึกออกและลองอีกครั้ง



5 ค่อยๆ เอาขวดหมึกออกจากช่องเติม

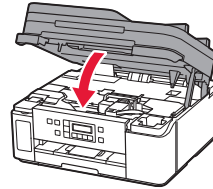
- ระวังอย่าให้หมึกหก



6 ปิดแค็ปตลับกลับลงไปให้แน่นสนิท จากนั้นปิดฝาครอบตลับหมึก



7 ปิดหน่วยการสแกน/ฝาครอบ

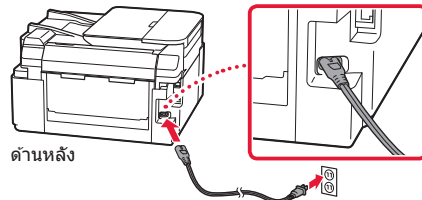


⚠ ข้อควรระวัง
โปรดระวังนิ้วของคุณ

5. การเปิดเครื่องพิมพ์



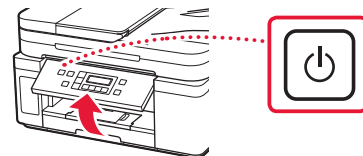
1 เชื่อมต่อสายไฟ



»»» ข้อสำคัญ

อย่าเชื่อมต่อสายเคเบิลอื่นๆ ในขณะที่

2 เปิดแผงการทำงาน และกดปุ่ม พลังงาน



- 3 เมื่อหน้าจอต่อไปนี้ปรากฏขึ้น ให้ใช้ปุ่ม ◀ และ ▶ เพื่อเลือกภาษา จากนั้นกดปุ่ม **OK**



»»» ข้อสำคัญ

หากมีข้อผิดพลาดปรากฏขึ้นบนหน้าจอ โปรดดู "หากมีข้อความแสดงข้อผิดพลาด (รหัสสนับสนุน) ปรากฏขึ้นบนหน้าจอ" ใน หน้า 3 และปฏิบัติตามคำแนะนำ

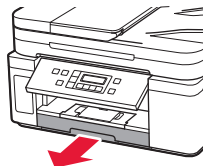
6. การป้อนกระดาษ



- 1 เมื่อหน้าจอต่อไปนี้ปรากฏขึ้น ให้ใช้ปุ่ม ◀ และ ▶ เพื่อเลือก **Yes** จากนั้นกดปุ่ม **OK**

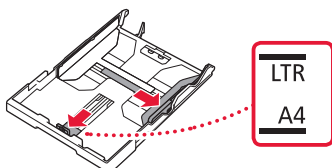


- 2 ถอดกลักรกระดาษออกจากเครื่องพิมพ์



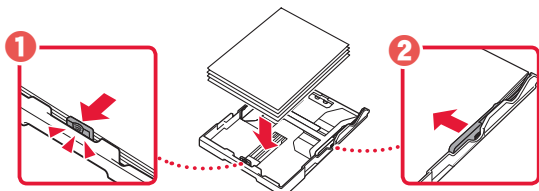
- 3 เลื่อนแถบกำหนดแนวกระดาษแยกออกจากกัน

- เลื่อนแถบกำหนดแนวกระดาษไปทางขอบด้านขวา จัดแถบกำหนดแนวกระดาษด้านหน้าให้ตรงกับเครื่องหมาย Letter หรือ A4

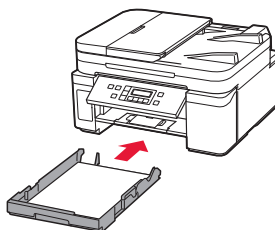


- 4 ป้อนกระดาษ

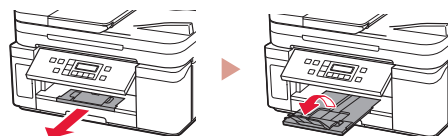
- ป้อนกระดาษธรรมดาขนาด Letter หรือ A4 2 แผ่น หรือมากกว่าโดยให้ด้านที่พิมพ์คว่ำหน้าลง
- วางกระดาษต่อจากแถบกำหนดแนวกระดาษด้านหน้า และจัดแถบกำหนดแนวกระดาษด้านขวาให้กว้างเท่ากับกระดาษ



- 5 ใส่กลักรกระดาษกลับเข้าไป

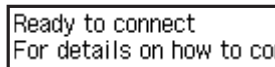
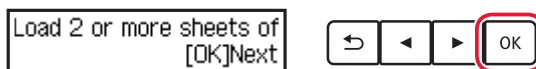


- 6 ดึงเทรย์ออกกระดาษออกมา

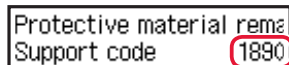


- 7 ปฏิบัติตามคำแนะนำบนหน้าจอ จากนั้นกดปุ่ม **OK**

- ตรวจสอบว่า **Ready to connect** ปรากฏขึ้นบนหน้าจอของเครื่องพิมพ์



? หากมีข้อความแสดงข้อผิดพลาด (รหัสสนับสนุน) ปรากฏขึ้นบนหน้าจอ



— รหัสสนับสนุน

ตรวจสอบรหัสสนับสนุน จากนั้นปฏิบัติตามคำแนะนำหากมีการเขียนรหัสที่แสดงด้านล่างนี้

- 1890
ไม่ได้เอาวัสดุป้องกันออก
➔ "2. การเอาวัสดุป้องกันออก" ในหน้า 1
- 1470
ไม่ได้ติดตั้งหัวพิมพ์อย่างถูกต้อง
➔ "3. การติดตั้งหัวพิมพ์" ในหน้า 1
- 1471
ไม่มีการติดตั้งหัวพิมพ์
➔ "3. การติดตั้งหัวพิมพ์" ในหน้า 1
- 1642
อาจมีหมึกไม่เพียงพอ
➔ "4. การเทหมึก" ในหน้า 2

สำหรับกรณีอื่นๆ ทั้งหมด โปรดดู คู่มือออนไลน์

การตั้งค่าเครื่องพิมพ์

คุณกำลังเชื่อมต่ออุปกรณ์ใด



คอมพิวเตอร์



คอมพิวเตอร์และ
สมาร์ทโฟน



สมาร์ทโฟน

การใช้เครื่องพิมพ์ของคุณโดยไม่เชื่อมต่ออุปกรณ์อื่นๆ → 7-c

7-a

การเชื่อมต่อกับคอมพิวเตอร์

หากคุณใช้คอมพิวเตอร์หลายเครื่อง ให้ทำตามขั้นตอนเหล่านี้ในคอมพิวเตอร์แต่ละเครื่อง



1 เข้าถึงเว็บไซต์ของ Canon จากคอมพิวเตอร์

<https://ij.start.canon>

2 เลือก  **ตั้งค่า**

3 ป้อนชื่อรุ่นของเครื่องพิมพ์ของคุณและคลิก **ไป**

4 คลิก **เริ่ม**

5 คลิก **หากคุณได้ทำการจัดเตรียมเครื่องพิมพ์ของคุณแล้ว ให้ไปที่เชื่อมต่อ**

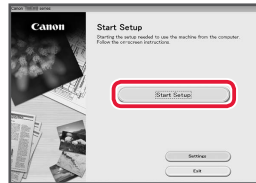
▶▶▶ **หมายเหตุ**

ขั้นตอนต่อไปสำหรับ Windows (ยกเว้น Windows 10 in S mode)

6 คลิก **ดาวน์โหลด**

7 เรียกใช้ไฟล์ที่ดาวน์โหลด

8 คลิก **เริ่มต้นการตั้งค่า(Start Setup)**



9 ปฏิบัติตามคำแนะนำบนหน้าจอ

- การดำเนินการเหล่านี้อาจใช้เวลาสักครู่
- หากต้องการเชื่อมต่อกับสมาร์ทโฟนด้วยโปรโตคอล "7-b.การเชื่อมต่อกับสมาร์ทโฟน" ในหน้า 5

การใช้ Setup CD-ROM สำหรับ Windows

ดับเบิลคลิก **EasySetup.exe** ใน CD-ROM จากนั้นดำเนินการตามขั้นตอนที่ 3 หากคุณไม่ได้เชื่อมต่ออินเทอร์เน็ต เปิดโฟลเดอร์ **win** ใน CD-ROM จากนั้นดับเบิลคลิก **SETUP.exe** ซึ่งจะเป็นการติดตั้งไดรเวอร์เครื่องพิมพ์

7-b

การเชื่อมต่อกับสมาร์ทโฟน

หากคุณใช้สมาร์ทโฟนหลายเครื่อง ให้ทำตามขั้นตอนเหล่านี้ในสมาร์ทโฟนแต่ละเครื่อง



เตรียมการต่อไปก่อนที่จะเริ่มต้น

- 1 เปิดใช้งานการตั้งค่า Wi-Fi ในสมาร์ทโฟนของคุณ
- 2 เชื่อมต่อสมาร์ทโฟนของคุณกับเราเตอร์แบบไร้สาย (หากคุณมีเราเตอร์แบบไร้สาย) โปรดดูรายละเอียดเพิ่มเติมจากคู่มือสมาร์ทโฟนและเราเตอร์แบบไร้สายของคุณ

1 ติดตั้งแอป "Canon PRINT Inkjet/SELPHY" ในสมาร์ทโฟนของคุณ

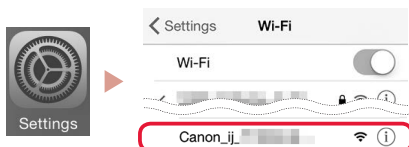
- สแกนรหัส QR ที่แสดงอยู่ทางด้านขวาเพื่อเข้าถึงเว็บไซต์ของ Canon จากนั้นดาวน์โหลดแอป



2 เปิดการตั้งค่า Wi-Fi ของสมาร์ทโฟน และชื่อเครือข่าย (SSID) ที่ขึ้นต้นด้วย "Canon_ij_"

หาก "Canon_ij_" ไม่ปรากฏขึ้น ดำเนินการต่อไปยังขั้นตอนที่ 3

(ตัวอย่างของหน้าจอ iOS)



3 เปิดแอปที่ติดตั้ง



4 ปฏิบัติตามคำแนะนำบนหน้าจอในแอปเพื่อเพิ่มเครื่องพิมพ์ของคุณ

เมื่อคุณเพิ่มเครื่องพิมพ์ของคุณแล้ว คุณสามารถพิมพ์จากสมาร์ทโฟนของคุณได้

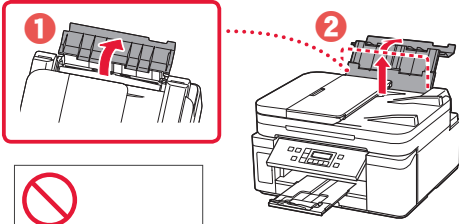
7-c

อย่าเชื่อมต่ออุปกรณ์

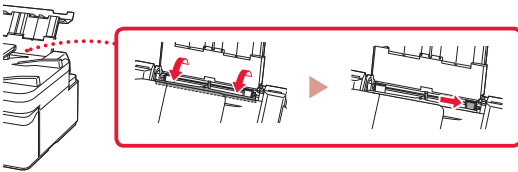
- 1 กดปุ่ม **หยุด**
- 2 เลือก **Do not connect** จากนั้นกดปุ่ม **OK**
- 3 เลือก **Yes** จากนั้นกดปุ่ม **OK**

การป้อนกระดาษลงในเทรย์ด้านหลัง

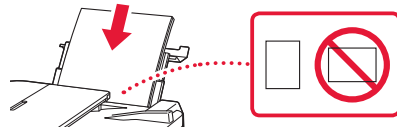
1 เปิดฝาครอบเทรย์ด้านหลัง และดึงฐานรองกระดาษออกมา



2 เปิดฝาครอบช่องป้อนกระดาษ และเลื่อนด้านขวามือของแถบกำหนดแนวกระดาษออกไปทางด้านขวา

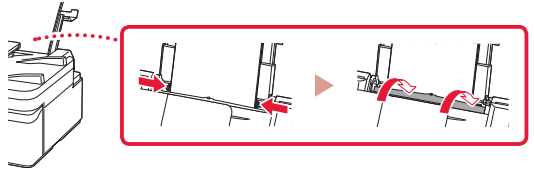


3 ป้อนกระดาษหลายแผ่นโดยให้หงายด้านที่จะพิมพ์ขึ้น



4 ปรับแถบกำหนดแนวกระดาษให้พอดีกับกระดาษ จากนั้นปิดฝาครอบช่องป้อนกระดาษ

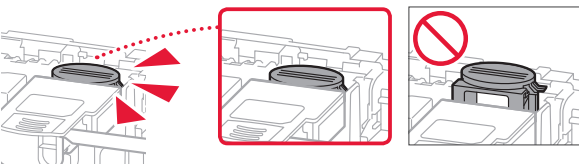
- ปฏิบัติตามคำแนะนำบนหน้าจอลiquid crystal display เพื่อตั้งค่าข้อมูลสำหรับกระดาษที่ป้อน



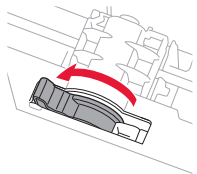
การเคลื่อนย้ายเครื่องพิมพ์ของคุณ

หากทำการย้ายที่เครื่องพิมพ์ ให้ตรวจสอบรายการต่อไปนี้ โปรดดู คู่มือออนไลน์ สำหรับรายละเอียด

ตรวจสอบว่าปุ่มเชื่อมต่อถูกกดลงจนสุด เพื่อหลีกเลี่ยงการร้าวซึมของหมึก

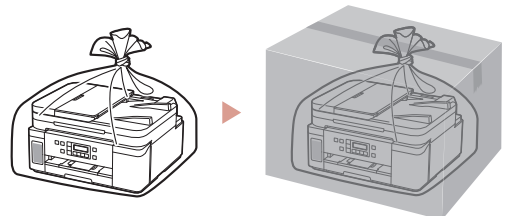


ตรวจสอบว่าคานปิดเปิดหมึกอยู่ในตำแหน่งที่ปิดอยู่



ให้แพ็คเครื่องพิมพ์ในถุงพลาสติกในกรณีที่มีการรั่วซึมของหมึก

- บรรจุเครื่องพิมพ์ลงในกล่องที่แข็งแรงแล้วหั่นส่วนล่างของเครื่องไว้ด้านล่าง ใช้วัสดุป้องกันให้เพียงพอเพื่อให้ขนย้ายได้อย่างปลอดภัย
- อย่าเอียงเครื่องพิมพ์ หมึกอาจรั่วซึมได้
- โปรดจัดการด้วยความระมัดระวังและให้กล่องคงอยู่ในแนวราบและไมคว่ำด้านบนลงหรือตะแคงข้าง เพราะเครื่องพิมพ์อาจเกิดความเสียหายและหมึกในเครื่องพิมพ์อาจรั่วซึม
- เมื่อเอเยนต์การขนส่งทำการขนย้ายเครื่องพิมพ์ ให้ทำเครื่องหมาย "ด้านนี้ด้านบน" บนกล่องเครื่องพิมพ์เพื่อให้ส่วนล่างของเครื่องอยู่ด้านล่าง ทำเครื่องหมาย "แตกง่าย" หรือ "เคลื่อนย้ายอย่างระมัดระวัง" ด้วย



Mengeset Pencetak

Pengesetan Daring
<https://ij.start.canon>



1. Isi Kemasan

• Kepala cetak

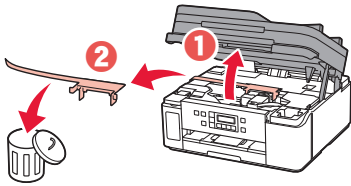


- Botol tinta
- Kabel listrik
- Setup CD-ROM untuk Windows
- Keamanan dan Informasi Penting
- Mari Memulai (petunjuk ini)

2. Melepaskan Material Kemasan



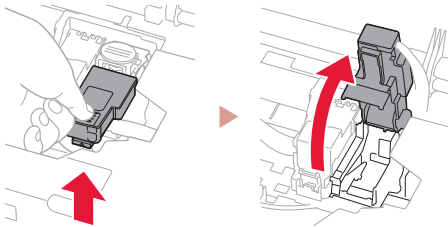
- 1 Lepaskan dan buang semua material kemasan dan pita oranye.
- 2 Buka unit pemindaian / penutup, lepaskan dan buang pita oranye serta material pelindung di dalamnya.



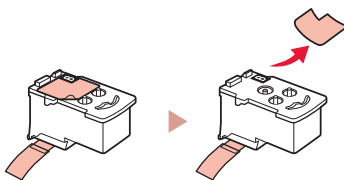
3. Memasang Kepala Cetak



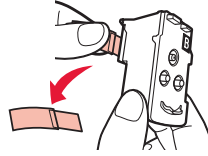
- 1 Buka penutup pengunci kepala cetak di sebelah kanan.



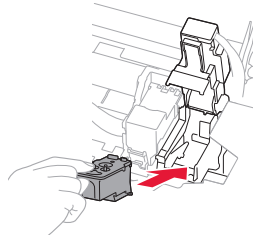
- 2 Keluarkan kepala cetak dari dalam kemasan dan lepaskan labelnya.



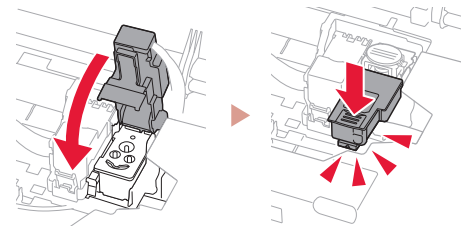
- 3 Lepaskan pita pelindung.



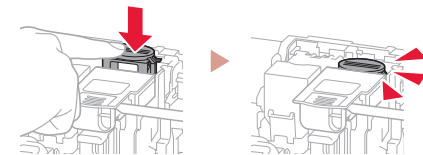
- 4 Masukkan kepala cetak ke dalam penahan kepala cetak.



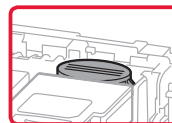
- 5 Tutup penutup pengunci kepala cetak dan tekan ke bawah sampai berbunyi klik.



- 6 Tekan tombol sambungan sepenuhnya sampai berbunyi klik.



Periksa!



Mengeset Pencetak

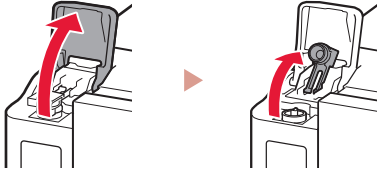
4. Menuang Tinta



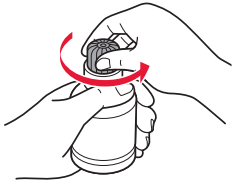
▶▶▶ Penting

Produk ini membutuhkan penanganan tinta yang seksama. Tinta mungkin terpercik ketika kotak tinta diisi. Jika tinta menodai pakaian Anda atau benda lain, mungkin tidak akan dapat dibersihkan.

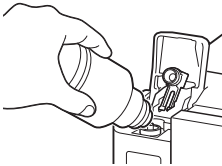
- 1 Buka penutup unit kotak tinta dan penutup kotak.



- 2 Pegang botol tinta secara tegak lurus dan putar perlahan penutup botol untuk membukanya.

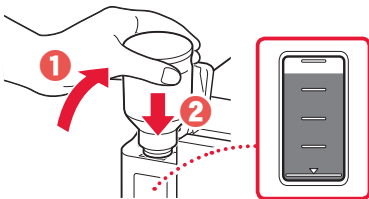


- 3 Paskan mulut botol tinta dengan lubang pengisian.



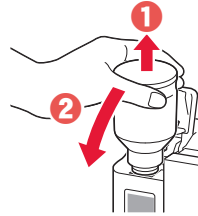
- 4 Perlahan tegakkan botol tinta menghadap ke bawah dan tekan untuk menuangkan tinta.

- Jika tinta tidak tertuang, secara perlahan lepaskan botol tinta dan coba lagi.

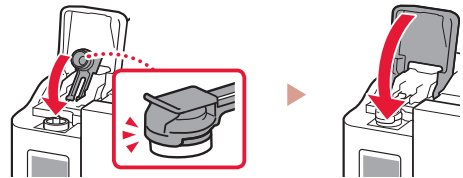


- 5 Secara perlahan lepaskan botol tinta dari lubang pengisian.

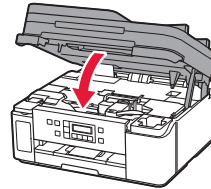
- Hati-hati agar tidak menumpahkan tinta.



- 6 Pasang kembali penutup kotak **dengan rapat**, kemudian tutup penutup unit kotak tinta.



- 7 Tutup unit pemindaian / penutup.

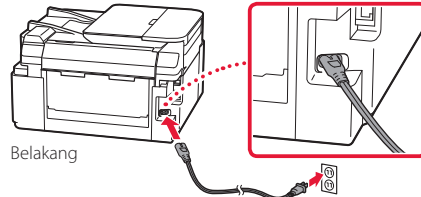


⚠ Perhatian
Hati-hati agar jari Anda tidak terjepit.

5. Menyalakan Pencetak



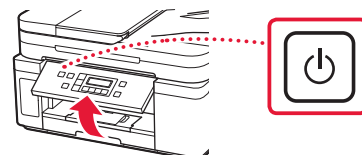
- 1 Hubungkan kabel listrik.



▶▶▶ Penting

Pada saat ini, jangan hubungkan kabel lain apa pun.

- 2 Buka panel operasi dan tekan tombol **DAYA**.



- 3 Ketika layar berikut ini muncul, gunakan tombol ◀ dan ▶ untuk memilih bahasa, kemudian tekan tombol **OK**.



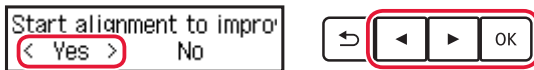
▶▶▶ Penting

Jika kesalahan muncul pada layar, lihat "Jika pesan kesalahan (kode dukungan) muncul pada layar" pada halaman 3 dan ikuti instruksi.

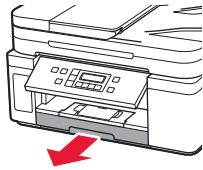
6. Memuatkan Kertas



- 1 Ketika layar berikut ini muncul, gunakan tombol ◀ dan ▶ untuk memilih **Ya(Yes)**, kemudian tekan tombol **OK**.

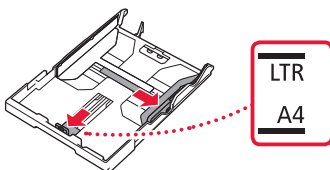


- 2 Keluarkan kotak kertas dari pencetak.



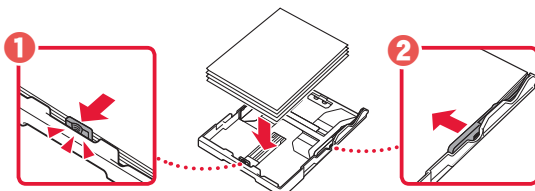
- 3 Geser untuk membuka pemandu kertas.

- Geser pemandu kertas kanan ke ujung kanan. Jajarkan pemandu kertas bagian depan dengan tanda Letter atau A4.

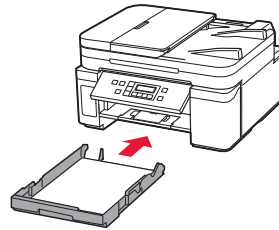


- 4 Muatkan kertas.

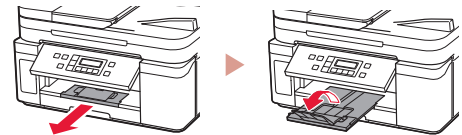
- Muatkan 2 lembar atau lebih kertas biasa ukuran Letter atau A4 dengan sisi cetak menghadap ke bawah.
- Letakkan kertas merapat ke pemandu kertas bagian depan, dan paskan pemandu kertas sebelah kanan dengan lebar kertas.



- 5 Pasang kembali kotak kertas.

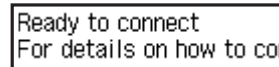
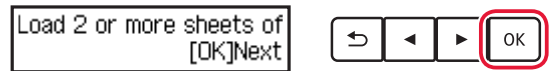


- 6 Tarik keluar tatakan keluaran kertas.



- 7 Ikuti instruksi pada layar, kemudian tekan tombol **OK**.

- Periksa apakah **Siap utk menyambungkan(Ready to connect)** muncul pada layar pencetak.



? Jika pesan kesalahan (kode dukungan) muncul pada layar

Protective material removed
Support code 1890 — Kode dukungan

Periksa kode dukungan, kemudian ikuti instruksi jika kode yang ditampilkan adalah seperti yang tertulis di bawah ini.

- **1890**
Material pelindung tidak dilepas.
→ "2. Melepaskan Material Kemasan" pada halaman 1
- **1470**
Kepala cetak tidak terpasang dengan benar.
→ "3. Memasang Kepala Cetak" pada halaman 1
- **1471**
Tidak ada kepala cetak yang dipasang.
→ "3. Memasang Kepala Cetak" pada halaman 1
- **1642**
Tinta mungkin tidak cukup.
→ "4. Menuang Tinta" pada halaman 2

Untuk segala kasus lainnya, rujuk ke **Petunjuk Daring**.

Perangkat apa yang akan Anda hubungkan?



Komputer



Komputer dan
ponsel pintar



Ponsel pintar

Untuk menggunakan pencetak Anda tanpa menghubungkan ke perangkat lain apa pun. → 7-c

7-a

Menghubungkan ke Komputer

Jika Anda menggunakan beberapa komputer, lakukan langkah-langkah berikut pada masing-masing komputer.



- 1 Akses situs web Canon dari komputer.

<https://ij.start.canon>



- 2 Pilih  **Mengeset.**

- 3 Masukkan nama model pencetak Anda dan klik **Buka.**

- 4 Klik **Mulai.**

- 5 Klik **Jika Anda telah menyiapkan pencetak, pergi ke Hubungkan.**

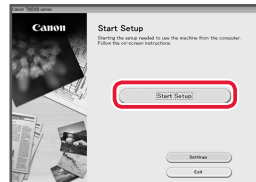
▶▶▶ Catatan

Langkah-langkah berikut ini adalah untuk Windows (kecuali Windows 10 in S mode).

- 6 Klik **Unduh.**

- 7 Jalankan berkas yang diunduh.

- 8 Klik **Mulai Pengesetan(Start Setup).**



- 9 Ikuti instruksi pada layar.

- Operasi ini mungkin membutuhkan waktu.
- Untuk menghubungkan ke ponsel pintar, lihat "7-b. Menghubungkan ke Ponsel Pintar" pada halaman 5.

Menggunakan Setup CD-ROM untuk Windows

Klik dua kali **EasySetup.exe** dalam CD-ROM, kemudian lanjutkan dari langkah 3. Jika Anda tidak memiliki koneksi internet, buka folder **win** dalam CD-ROM dan klik dua kali **SETUP.exe**. Ini akan menginstal pengandar pencetak.

7-b

Menghubungkan ke Ponsel Pintar

Jika Anda menggunakan beberapa ponsel pintar, lakukan langkah-langkah berikut pada masing-masing ponsel pintar.



Persiapkan hal-hal berikut sebelum memulai.

- 1 Aktifkan setelan Wi-Fi pada ponsel pintar Anda.
- 2 Hubungkan ponsel pintar Anda ke perute nirkabel (jika Anda memiliki perute nirkabel).
Rujuk ke petunjuk ponsel pintar dan perute nirkabel Anda untuk detail lebih lanjut.

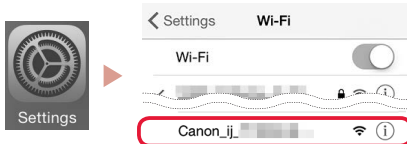
1 Instal aplikasi "Canon PRINT Inkjet/SELPHY" pada ponsel pintar Anda.

- Pindai kode QR yang ditunjukkan di sebelah kanan untuk mengakses situs web Canon, kemudian unduh aplikasi.



2 Buka setelan Wi-Fi pada ponsel pintar Anda. Ketuk nama jaringan (SSID) yang dimulai dengan "Canon_ij_". Jika "Canon_ij_" tidak muncul, lanjutkan ke langkah 3.

(Contoh layar iOS)



3 Buka aplikasi yang telah diinstal.



4 Ikuti instruksi pada layar aplikasi untuk menambahkan pencetak Anda.

Setelah menambahkan pencetak, Anda dapat mencetak dari ponsel pintar.

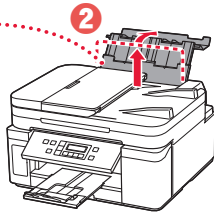
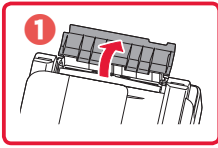
7-c

Tidak Menghubungkan ke Perangkat

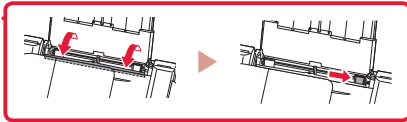
- 1 Tekan tombol **Berhenti**.
- 2 Pilih **Jangan sambungkan(Do not connect)**, kemudian tekan tombol **OK**.
- 3 Pilih **Ya(Yes)**, kemudian tekan tombol **OK**.

Memuatkan Kertas ke Dalam Tatakan Belakang

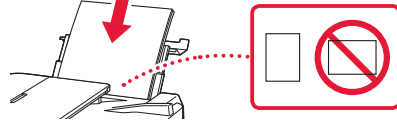
- 1 Buka penutup tatakan belakang dan panjangkan pendukung kertas.



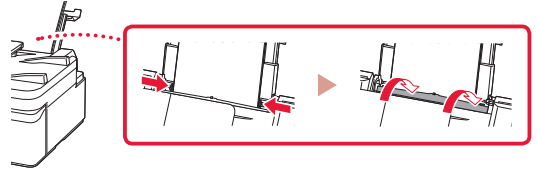
- 2 Buka penutup slot penyaluran dan geser pemandu kertas sebelah kanan ke ujung kanan.



- 3 Muatkan beberapa lembar kertas dengan sisi cetak menghadap ke atas.



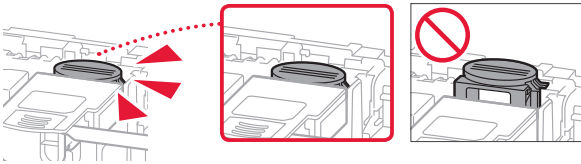
- 4 Jajarkan pemandu kertas dengan kertas, kemudian tutup penutup slot penyaluran.
- Ikuti instruksi pada layar untuk mengeset informasi kertas yang dimuatkan.



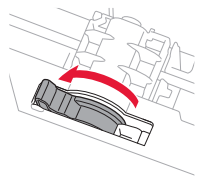
Memindahkan Pencetak Anda

Ketika memindahkan pencetak, pastikan hal-hal berikut ini. Rujuk ke **Petunjuk Daring** untuk detail.

Periksa apakah tombol sambungan telah ditekan ke bawah sepenuhnya untuk menghindari kebocoran tinta.

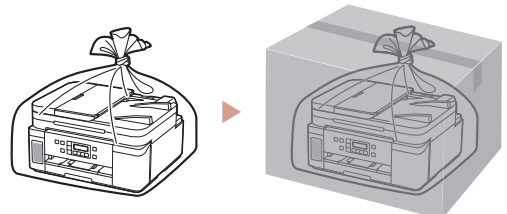


Periksa apakah posisi tuas katup tinta tertutup.



Kemas pencetak dalam kantong plastik untuk mengantisipasi jika tinta bocor.

- Kemas pencetak dalam kotak yang kokoh sehingga mesin ditempatkan dengan bagian alas menghadap ke bawah, menggunakan material pelindung yang memadai untuk memastikan pemindahan aman.
- Jangan miringkan pencetak. Tinta mungkin bocor.
- Harap tangani dengan hati-hati dan pastikan kotak tetap rata dan JANGAN balikkan ke bawah atau ke samping, karena pencetak mungkin rusak dan tinta dalam pencetak mungkin bocor.
- Ketika ekspeditor menangani pemindahan pencetak, pastikan kotak ditandai "SISI INI MENGHADAP KE ATAS" untuk memastikan pencetak dengan bagian alasnya menghadap ke bawah. Tandai juga dengan "MUDAH PECAH" atau "TANGANI DENGAN HATI-HATI".



Thiết lập máy in

Thiết lập trực tuyến
<https://ij.start.canon>



1. Thành phần hộp

• Đầu in

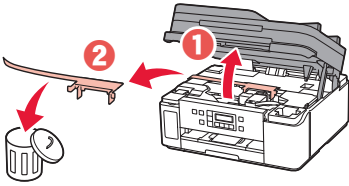


- Lọ mực mực
- Dây nguồn
- CD-ROM cài đặt dành cho Windows
- Thông tin an toàn và quan trọng
- Hướng dẫn bắt đầu (hướng dẫn sử dụng này)

2. Tháo vật liệu đóng gói



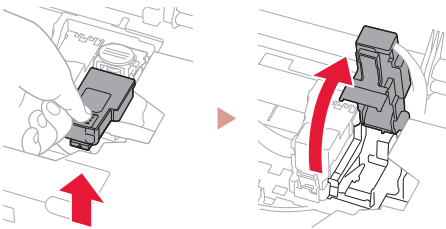
- 1 Tháo và vứt bỏ tất cả vật liệu đóng gói và băng dính màu cam.
- 2 Mở bộ quét / nắp, tháo và vứt bỏ băng dính màu cam và vật liệu bảo vệ ở bên trong.



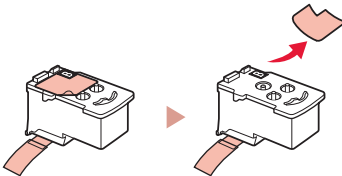
3. Lắp Đầu in



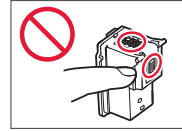
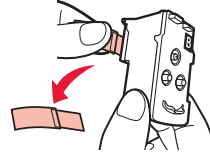
- 1 Mở nắp khóa đầu in ở bên phải.



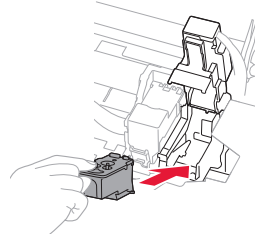
- 2 Lấy đầu in ra khỏi bao bì và bóc nhãn ra.



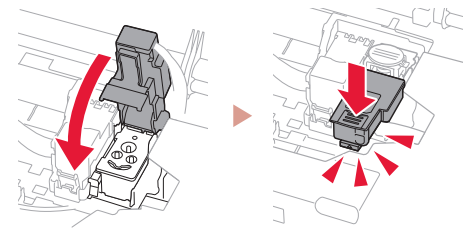
- 3 Gỡ băng bảo vệ ra.



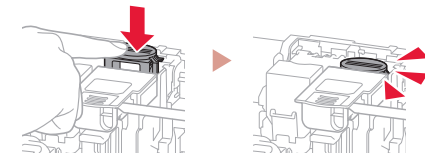
- 4 Lắp đầu in vào khay chứa đầu in.



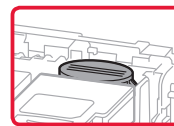
- 5 Đóng nắp khóa đầu in và đẩy xuống cho đến khi có tiếng tách.



- 6 Nhấn hoàn toàn nút khớp nối xuống cho đến khi có tiếng tách.



Kiểm tra!



Thiết lập máy in

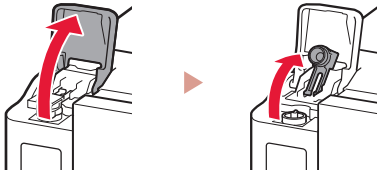
4. Rót mực



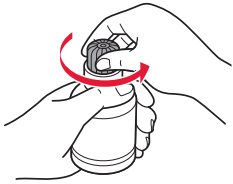
Quan trọng

Yêu cầu thao tác mực cẩn thận đối với sản phẩm này. Mực có thể văng ra khi nạp mực vào các bình mực. Mực có thể không tẩy được khi dính vào quần áo hoặc đồ đạc cá nhân.

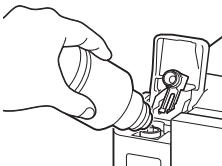
1 Mở nắp khay bình mực và nắp bình.



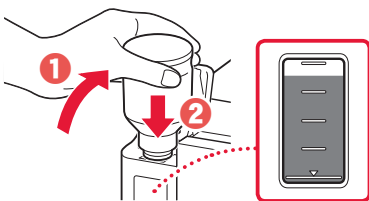
2 Giữ lọ nạp mực thẳng đứng và nhẹ nhàng xoay nắp lọ nạp để tháo ra.



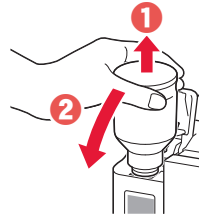
3 Căn chỉnh miệng của lọ nạp mực vào đầu nạp mực.



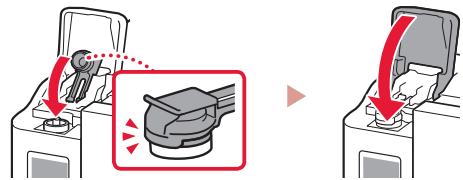
4 Từ từ dốc ngược lọ nạp mực và đẩy xuống để rót mực.
• Nếu chưa rót được mực, nhẹ nhàng tháo lọ nạp mực và thử lại.



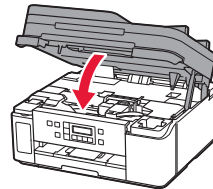
5 Nhẹ nhàng tháo lọ nạp mực ra khỏi đầu nạp mực.
• Thao tác cẩn thận để không tràn mực ra.



6 Đóng nắp bình **chắc chắn**, rồi đóng nắp khay bình mực.



7 Đóng bộ quét / nắp.

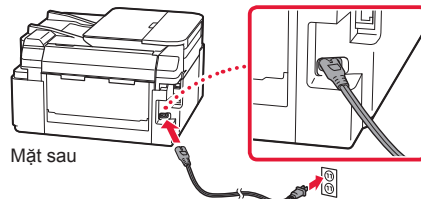


⚠ **Chú ý**
Cẩn thận kệt ngón tay.

5. Bật máy in



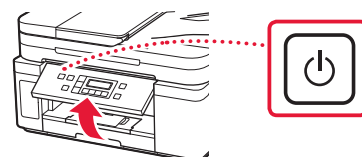
1 Kết nối dây nguồn.



Quan trọng

Lúc này, không kết nối với bất kỳ cáp nào khác.

2 Mở bảng thao tác và nhấn nút **BẬT**.



- 3 Khi màn hình sau đây xuất hiện, sử dụng các nút ◀ và ▶ để chọn ngôn ngữ, rồi nhấn nút OK.



►►► **Quan trọng**

Nếu lỗi xuất hiện trên màn hình, tham khảo phần "Nếu thông báo lỗi (mã hỗ trợ) xuất hiện trên màn hình" ở trang 3 và thực hiện theo hướng dẫn.

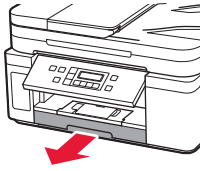
6. Nạp giấy



- 1 Khi màn hình sau đây xuất hiện, sử dụng các nút ◀ và ▶ để chọn **Có(Yes)**, rồi nhấn nút OK.

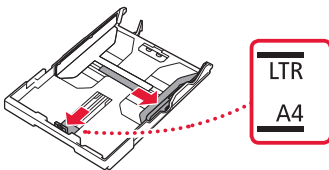


- 2 Tháo cát-xét ra khỏi máy in.



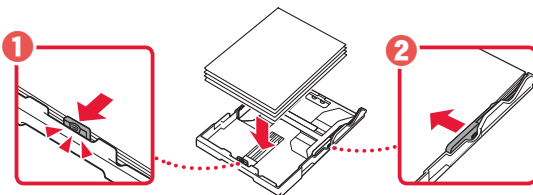
- 3 Trượt để tách các thanh dẫn giấy.

- Trượt thanh dẫn giấy bên phải sang phía cạnh phải. Căn chỉnh thanh dẫn giấy phía trước có dấu Letter hoặc A4.

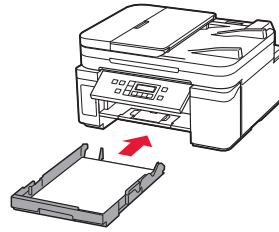


- 4 Nạp giấy.

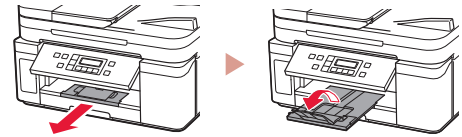
- Nạp từ 2 tờ giấy thường trở lên cỡ Letter hoặc A4 với mặt in úp xuống.
- Đặt giấy theo cạnh thanh dẫn giấy phía trước và điều chỉnh thanh dẫn giấy bên phải sát với chiều rộng của giấy.



- 5 Thay cát-xét.

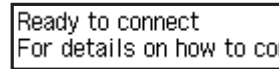
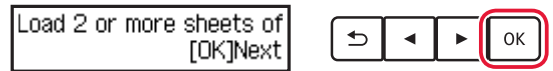


- 6 Kéo khay giấy ra ra.

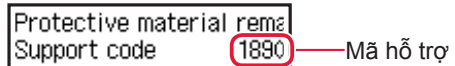


- 7 Thực hiện theo hướng dẫn trên màn hình, rồi nhấn nút OK.

- Xác nhận rằng **Sẵn sàng để kết nối(Ready to connect)** xuất hiện trên màn hình máy in.



? Nếu thông báo lỗi (mã hỗ trợ) xuất hiện trên màn hình



Kiểm tra mã hỗ trợ, rồi thực hiện theo hướng dẫn nếu mã xuất hiện là các mã được liệt kê dưới đây.

- 1890
Vật liệu bảo vệ chưa được tháo ra.
→ "2. Tháo vật liệu đóng gói" ở trang 1
- 1470
Đầu in chưa được lắp chính xác.
→ "3. Lắp Đầu in" ở trang 1
- 1471
Không có đầu in nào được lắp.
→ "3. Lắp Đầu in" ở trang 1
- 1642
Có thể không đủ mực.
→ "4. Rót mực" ở trang 2

Để tìm hiểu về tất cả các trường hợp khác, tham khảo phần **Hướng dẫn sử dụng trực tuyến**.

Thiết lập máy in

Bạn đang kết nối với thiết bị nào?



Máy tính



Máy tính và smartphone



Smartphone

Để sử dụng máy in mà không kết nối với bất kỳ thiết bị nào khác. → 7-c

7-a

Kết nối với máy tính

Nếu bạn sử dụng nhiều máy tính, thực hiện các bước này trên từng máy tính.



- 1 Truy cập trang web của Canon từ máy tính.

<https://ij.start.canon>



- 2 Chọn  **Thiết lập**.

- 3 Nhập tên model của máy in và nhấp vào **Đi đến**.

- 4 Nhấp vào **Bắt đầu**.

- 5 Nhấp vào **Nếu bạn đã chuẩn bị xong máy in, chuyển sang Kết nối**.

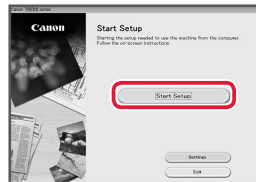
»»» Lưu ý

Các bước sau dành cho Windows (ngoại trừ Windows 10 in S mode) .

- 6 Nhấp vào **Tải xuống**.

- 7 Chạy tệp đã tải xuống.

- 8 Nhấp vào **Bắt đầu thiết lập(Start Setup)**.



- 9 Thực hiện theo hướng dẫn trên màn hình.

- Những thao tác này có thể mất một khoảng thời gian.
- Để kết nối với smartphone, xem phần "7-b.Kết nối với smartphone" ở trang 5.

Sử dụng CD-ROM cài đặt dành cho Windows

Nhấp đúp vào **EasySetup.exe** trong CD-ROM, rồi tiếp tục từ bước 3. Nếu bạn không có kết nối internet, hãy mở tệp **win** trong CD-ROM và nhấp đúp vào **SETUP.exe**. Thao tác này sẽ cài đặt trình điều khiển máy in.

7-b

Kết nối với smartphone

Nếu bạn sử dụng nhiều smartphone, thực hiện các bước này trên từng smartphone.



Chuẩn bị như sau trước khi bắt đầu.

- 1 Bật cài đặt Wi-Fi trên smartphone.
- 2 Kết nối smartphone với bộ định tuyến không dây (nếu bạn có bộ định tuyến không dây).
Tham khảo hướng dẫn sử dụng smartphone và bộ định tuyến không dây để tìm hiểu thêm chi tiết.

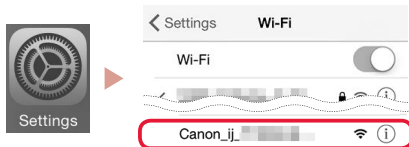
- 1 Cài đặt ứng dụng "Canon PRINT Inkjet/SELPHY" trên smartphone.

- Quét mã QR hiển thị ở bên phải để truy cập trang web của Canon, rồi tải xuống ứng dụng.



- 2 Mở cài đặt Wi-Fi trên smartphone. Gõ nhẹ vào tên mạng (SSID) bắt đầu bằng "Canon_ij_".
Nếu "Canon_ij_" không xuất hiện, chuyển sang bước 3.

(Ví dụ về màn hình iOS)



- 3 Mở ứng dụng đã cài đặt.



- 4 Thực hiện theo các hướng dẫn trên màn hình trong ứng dụng để thêm máy in.

Sau khi thêm máy in, bạn có thể in từ smartphone của mình.

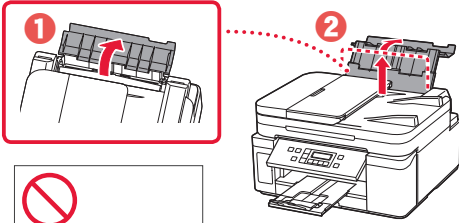
7-c

Không kết nối với thiết bị

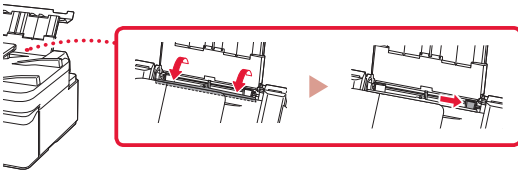
- 1 Nhấn nút **Dừng**.
- 2 Chọn **Không thể kết nối (Do not connect)**, rồi nhấn nút **OK**.
- 3 Chọn **Có (Yes)**, rồi nhấn nút **OK**.

Nạp giấy vào khay sau

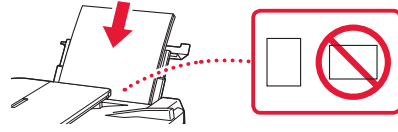
1 Mở nắp khay sau và mở rộng giá đỡ giấy ra.



2 Mở nắp khe nạp và trượt thanh dẫn giấy bên phải sang tận cùng bên phải.

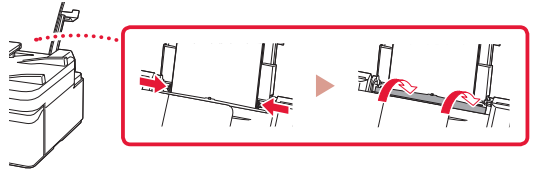


3 Nạp một vài tờ giấy với mặt in hướng lên trên.



4 Căn chỉnh thanh dẫn giấy theo giấy, rồi đóng nắp khe nạp.

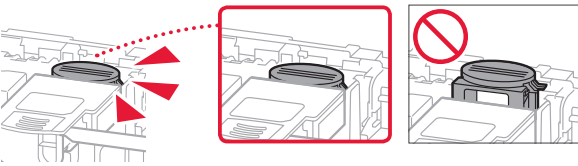
- Thực hiện theo hướng dẫn trên màn hình để cài đặt thông tin cho giấy đã nạp.



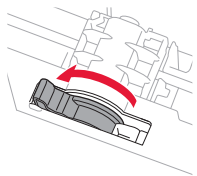
Vận chuyển máy in

Khi di chuyển máy in, đảm bảo những điều sau. Tham khảo phần **Hướng dẫn sử dụng trực tuyến** để tìm hiểu chi tiết.

Xác nhận rằng nút khóp nổi được nhấn xuống hoàn toàn để tránh rò rỉ mực.

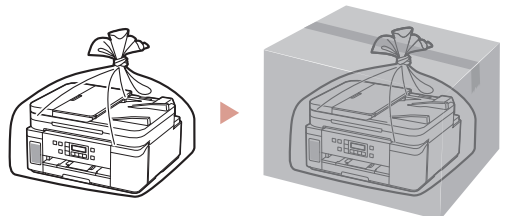


Xác nhận rằng vị trí của cần gạt van mực đã đóng.



Đóng gói máy in vào túi nhựa tránh trường hợp rò rỉ mực.

- Đóng gói máy in vào hộp cứng sao cho phần đáy úp xuống, sử dụng đủ vật liệu bảo vệ để đảm bảo vận chuyển an toàn.
- Không nghiêng máy in. Mực có thể rò ra.
- Vui lòng thao tác cẩn thận và đảm bảo rằng hộp vẫn phẳng và KHÔNG bị lật ngược hoặc nằm ngang, nếu không máy in có thể bị hỏng và mực trong máy in có thể rò.
- Khi đại lý vận chuyển xử lý việc vận chuyển máy in, đánh dấu "ĐẦU NÀY HƯỚNG LÊN" lên hộp để giữ cho đáy máy in úp xuống. Ngoài ra, đánh dấu thêm "ĐỒ DỄ VỠ" hoặc "THAO TÁC NHẸ TAY".



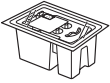
設定印表機

線上設定
<https://ij.start.canon>



1. 包裝箱內的物品

● 列印頭

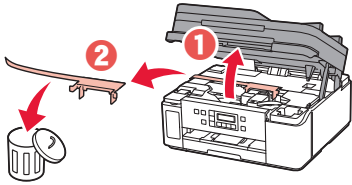


- 墨水瓶
- 電源線
- 適用於Windows的安裝光碟
- 安全與重要資訊
- 入門指南(本手冊)

2. 移除包裝材料



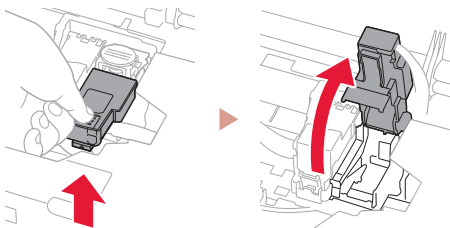
- 1 移除並處理所有包裝材料和橙色膠帶。
- 2 開啟掃描單元/機蓋，移除並處理內部的橙色膠帶和保護材料。



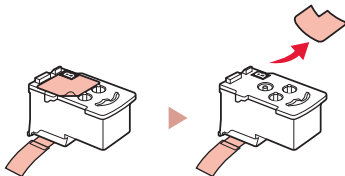
3. 安裝列印頭



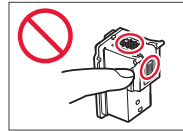
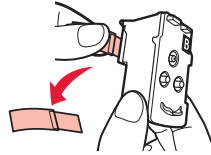
- 1 開啟右側的列印頭鎖定蓋。



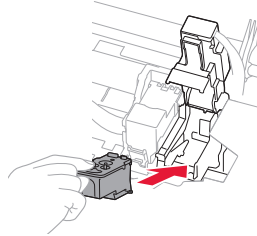
- 2 從包裝中取出列印頭並移除標籤。



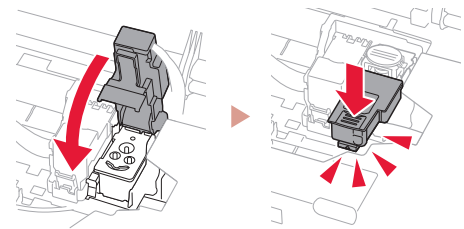
- 3 移除保護膠帶。



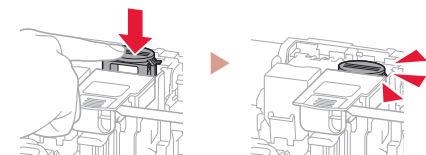
- 4 將列印頭插入列印頭固定座。



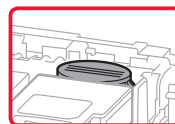
- 5 關閉列印頭鎖定蓋並向下按，直至其鎖定到位。



- 6 完全按下接合按鈕，直至其鎖定到位。



請確認！



設定印表機

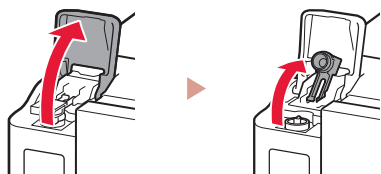
4. 倒入墨水



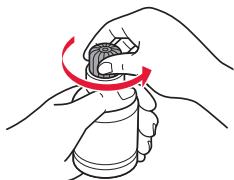
重要事項

本產品需要小心處理墨水。向墨水盒填充墨水時，墨水可能會濺出。如果墨水沾到衣服或物品上，可能無法清除。

- 1 開啟墨水盒艙蓋和墨水盒蓋。



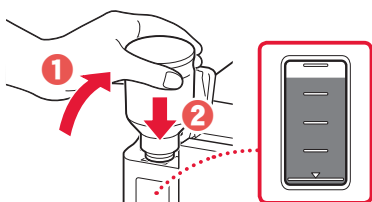
- 2 垂直握住墨水瓶並輕輕旋轉瓶蓋以將其取下。



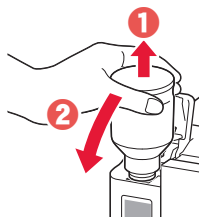
- 3 將墨水瓶的噴嘴與注入口對齊。



- 4 慢慢地將墨水瓶倒置並向下推以倒入墨水。
 - 如果墨水沒有倒出，請輕輕取下墨水瓶，然後重試。



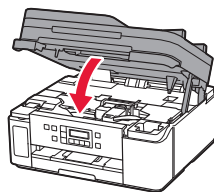
- 5 從注入口輕輕取下墨水瓶。
 - 請小心勿濺出墨水。



- 6 關緊墨水盒蓋，然後關閉墨水盒艙蓋。



- 7 關閉掃描單元/機蓋。

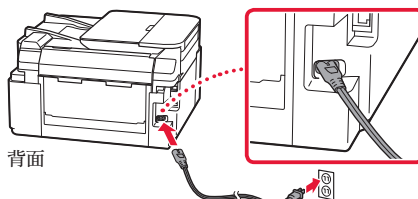


▲ 注意
當心手指。

5. 開啟印表機



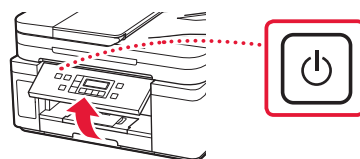
- 1 連接電源線。



重要事項

此時，請勿連接任何其他電纜線。

- 2 開啟操作面板，按電源按鈕。



- 3 顯示以下螢幕時，使用◀和▶按鈕選擇語言，然後按OK按鈕。



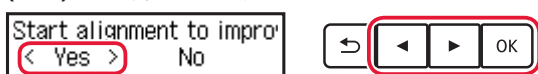
▶▶▶▶ 重要事項

如果螢幕上出現錯誤，請參見第3頁的「如果螢幕上出現錯誤訊息(支援代碼)」並按照說明操作。

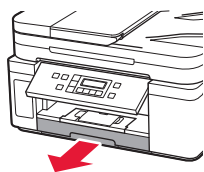
6. 裝入紙張



- 1 顯示以下螢幕時，使用◀和▶按鈕選擇是(Yes)，然後按OK按鈕。

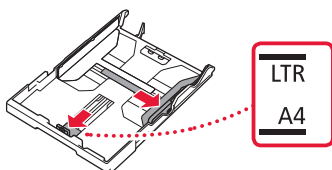


- 2 從印表機中取出紙匣。



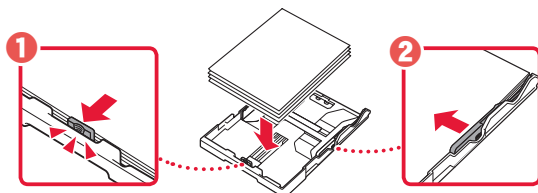
- 3 分開紙張導引器。

- 移動右側紙張導引器至右邊緣。將前端的紙張導引器與Letter或A4標記對齊。

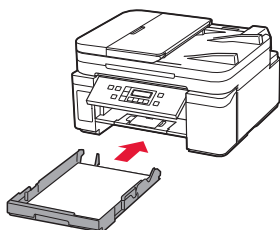


- 4 裝入紙張。

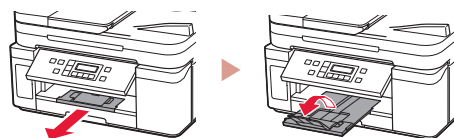
- 將列印面向下裝入2張或更多張Letter或A4大小的一般紙張。
- 對齊前端紙張導引器放入紙張，使右側紙張導引器適合紙張寬度。



- 5 裝回紙匣。

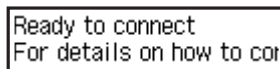
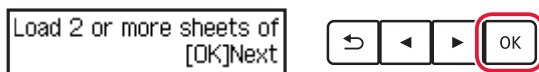


- 6 拉出出紙托盤。

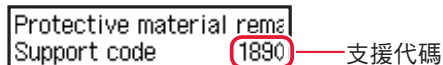


- 7 按照螢幕上的說明進行操作，然後按OK按鈕。

- 確認印表機的螢幕上是否出現**連接準備就緒(Ready to connect)**。



? 如果螢幕上出現錯誤訊息(支援代碼)



檢查支援代碼，如果顯示如下所述的代碼，請按照說明進行操作。

- 1890
保護材料尚未移除。
➔ 第1頁的「2. 移除包裝材料」
- 1470
未正確安裝列印頭。
➔ 第1頁的「3. 安裝列印頭」
- 1471
未安裝列印頭。
➔ 第1頁的「3. 安裝列印頭」
- 1642
墨水可能不足。
➔ 第2頁的「4. 倒入墨水」

對於所有其他情況，請參閱**線上手冊**。

想要連接何種裝置？



電腦



電腦和智慧型手機



智慧型手機

要在不連接其他任何裝置的情況下使用印表機。→7-c

7-a

連接到電腦

如果使用多台電腦，請在每台電腦上執行以下步驟。



- 1 從電腦存取Canon網站。

<https://ij.start.canon>



- 2 選擇設定。

- 3 輸入印表機型號名稱並按一下前往。

- 4 按一下開始。

- 5 按一下**如果印表機已準備就緒，請轉到連接**。

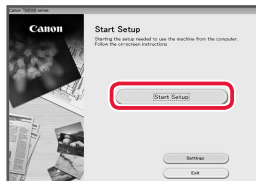
▶▶▶ 注釋

以下步驟適用於Windows(除了Windows 10 (S 模式))。

- 6 按一下**下載**。

- 7 執行下載的檔案。

- 8 按一下**開始設定(Start Setup)**。



- 9 按照螢幕上的說明進行操作。

- 此操作可能需要一些時間。
- 如還要連接到智慧型手機，請參見第5頁的「7-b. 連接到智慧型手機」。

使用適用於Windows的安裝光碟

按兩下光碟中的**EasySetup.exe**，然後從步驟3開始繼續操作。如果未連接到網際網路，請開啟光碟中的**win**資料夾，按兩下**SETUP.exe**。這將會安裝印表機驅動程式。

7-b

連接到智慧型手機

如果使用多部智慧型手機，請在每部智慧型手機上執行以下步驟。



開始操作前請進行以下準備工作。

- 1 啟用智慧型手機上的Wi-Fi設定。
- 2 將智慧型手機連接到無線路由器(如果有無線路由器)。

關於更多詳細資訊，請參閱智慧型手機和無線路由器的手冊。

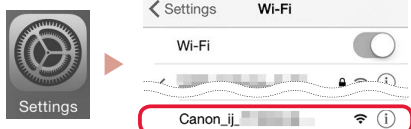
- 1 在智慧型手機上安裝應用程式「Canon PRINT Inkjet/SELPHY」。

- 掃描右側所示的QR代碼存取Canon網站，然後下載應用程式。



- 2 開啟智慧型手機的Wi-Fi設定。點選以「Canon_ij_」開頭的網路名稱(SSID)。如果「Canon_ij_」未出現，請繼續執行步驟3。

(iOS螢幕示例)



- 3 開啟已安裝的應用程式。



- 4 按照應用程式螢幕上的說明新增印表機。

新增印表機後，可以從智慧型手機進行列印。

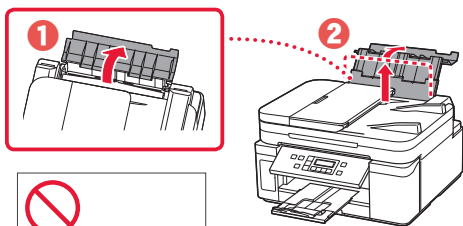
7-c

不連接到裝置

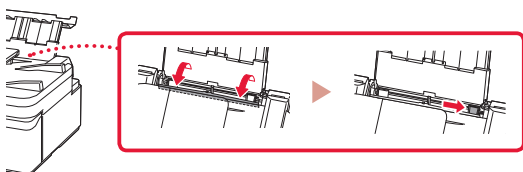
- 1 按停止按鈕。
- 2 選擇**不連接(Do not connect)**，然後按**OK**按鈕。
- 3 選擇**是(Yes)**，然後按**OK**按鈕。

在後端托盤中載入紙張

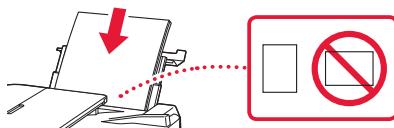
1 開啟後端托盤蓋並延長托紙架。



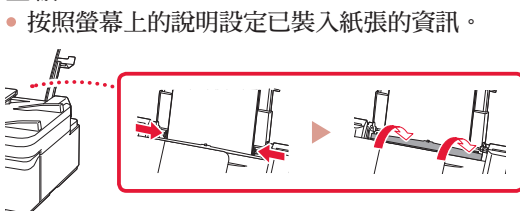
2 開啟送紙槽蓋板，然後移動右側紙張導引器至最右端。



3 將列印面向上裝入幾張紙。



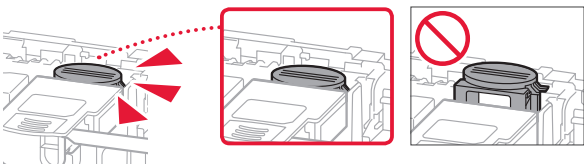
4 將紙張導引器對齊紙張，然後關閉送紙槽蓋板。



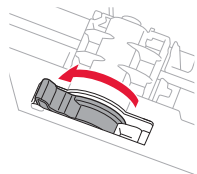
運輸印表機

重新置放印表機時，請確保以下事項。關於詳細資訊，請參閱線上手冊。

請確認完全按下接合按鈕，以避免墨水漏出。

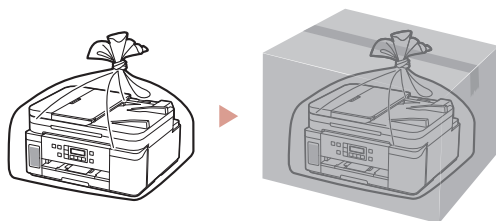


請確認墨水閥控制桿在關閉位置。



使用塑膠袋包裝印表機，以防墨水漏出。

- 將印表機底部向下置放包裝在堅固的箱子內，同時使用充足的保護材料以確保安全運輸。
- 請勿傾斜印表機。墨水可能會漏出。
- 請小心搬運，確保包裝盒放平，不要倒放或側放，因為印表機可能會損壞，印表機中的墨水可能會漏出。
- 代理商運輸印表機時，請在包裝箱上標明「此面向上」以使印表機底部向下。同時在包裝箱上標記「易碎」或「小心搬運」。



프린터 설정하기

온라인 설정
<https://ij.start.canon>



1. 상자 내용물

● 프린트 헤드

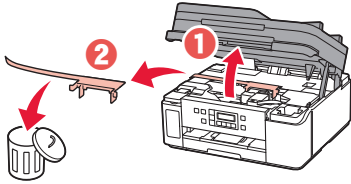


- 잉크병
- 전원 코드
- Windows용 Setup CD-ROM
- 안전 및 중요 정보
- 입문 가이드(이 설명서)

2. 포장 재료 제거하기



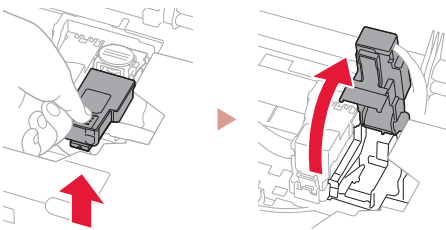
- 1 포장 재료와 오렌지색 테이프를 모두 제거하여 버립니다.
- 2 스캔 유닛/커버를 열고 내부의 오렌지색 테이프와 보호 재료를 제거하여 버립니다.



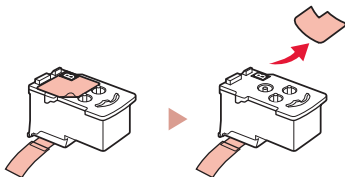
3. 프린트 헤드 설치하기



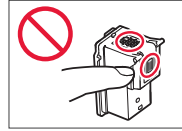
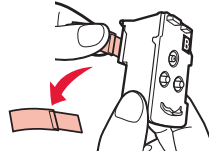
- 1 오른쪽의 프린트 헤드 잠금 커버를 엽니다.



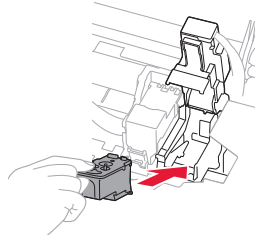
- 2 프린트 헤드를 포장에서 꺼내고 레이블을 제거합니다.



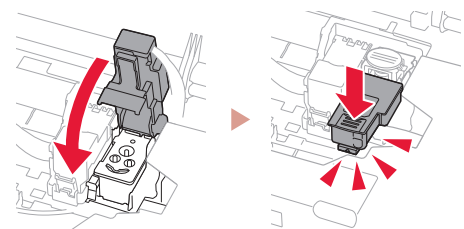
- 3 보호 테이프를 제거합니다.



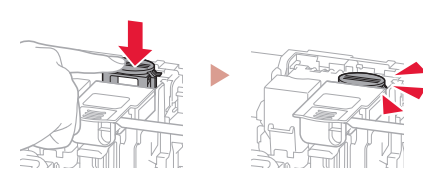
- 4 프린트 헤드를 프린트 헤드 홀더에 삽입합니다.



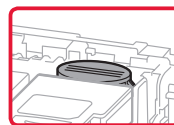
- 5 프린트 헤드 잠금 커버를 닫고 딸깍 소리가 날 때까지 아래로 누릅니다.



- 6 딸깍 소리가 날 때까지 연결 버튼을 완전히 아래로 누릅니다.



확인!



프린터 설정하기

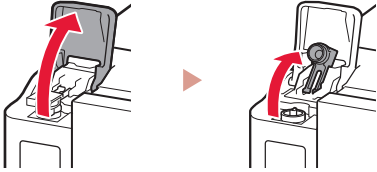
4. 잉크 주입하기



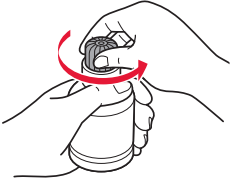
중요

이 제품의 잉크는 조심스럽게 다루어야 합니다. 잉크 탱크에 잉크를 채울 때 잉크가 튀 수 있습니다. 옷이나 소지품에 잉크가 묻은 경우 지워지지 않을 수 있습니다.

1 잉크 탱크 커버와 탱크 캡을 엽니다.



2 잉크병을 똑바로 잡고 병 캡을 가볍게 비틀어 제거합니다.

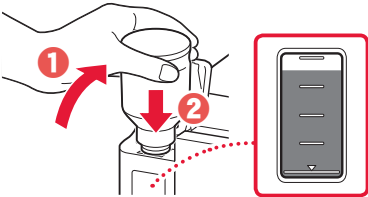


3 잉크병의 노즐을 주입구에 맞춥니다.

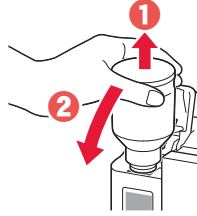


4 잉크병을 천천히 거꾸로 세우고 아래로 밀어 잉크를 주입합니다.

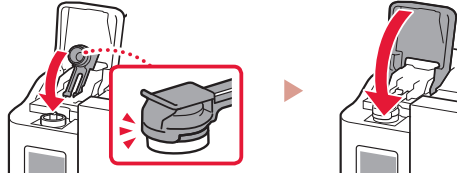
- 잉크가 주입되지 않는 경우 잉크병을 조심스럽게 제거했다가 다시 시도해 보십시오.



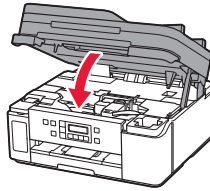
5 주입구에서 잉크병을 조심스럽게 제거합니다.
• 잉크를 흘리지 않도록 조심하십시오.



6 탱크 캡을 다시 단단히 씌운 다음 잉크 탱크 커버를 닫습니다.



7 스캔 유닛/커버를 닫습니다.

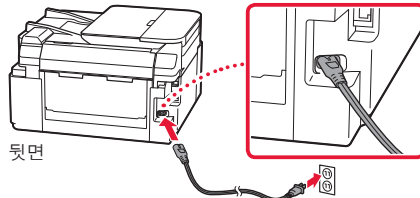


⚠ 주의
손가락을 조심하십시오.

5. 프린터 켜기



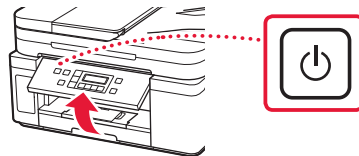
1 전원 코드를 연결합니다.



중요

이때에는 다른 케이블을 연결하지 마십시오.

2 조작판을 열고 전원(ON) 버튼을 누릅니다.



- 3 다음 화면이 나타나면 ◀ 및 ▶ 버튼을 사용하여 언어를 선택한 다음 **OK** 버튼을 누릅니다.



중요

화면에 오류가 나타나는 경우 3페이지의 "화면에 오류 메시지(지원 코드)가 나타나는 경우"를 참조하여 설명을 따르십시오.

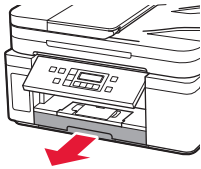
6. 용지 로드하기



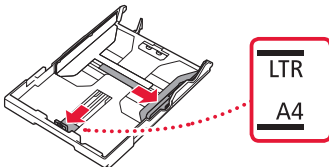
- 1 다음 화면이 나타나면 ◀ 및 ▶ 버튼을 사용하여 예(Yes)를 선택한 다음 **OK** 버튼을 누릅니다.



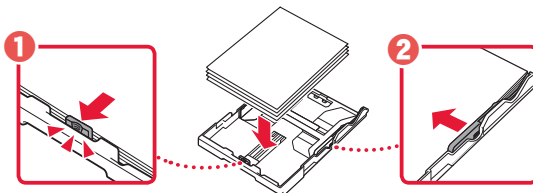
- 2 프린터에서 카세트를 제거합니다.



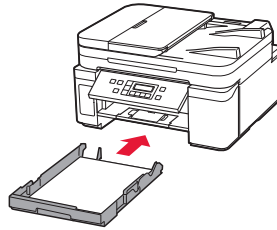
- 3 용지 가이드를 밀어 벌립니다.
- 오른쪽 용지 가이드를 오른쪽 가장자리로 밀습니다. 앞쪽 용지 가이드를 Letter 또는 A4 표시에 맞춥니다.



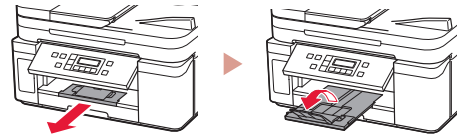
- 4 용지를 로드합니다.
- 2장 이상의 Letter 또는 A4 크기 보통 용지를 인쇄면이 아래로 향하게 하여 로드합니다.
 - 용지를 앞쪽 용지 가이드에 맞게 넣고 오른쪽 용지 가이드를 용지 너비에 맞춥니다.



- 5 카세트를 다시 장착합니다.

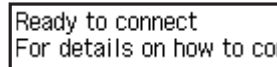
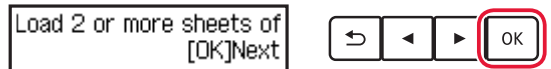


- 6 용지 출력 트레이를 빼냅니다.

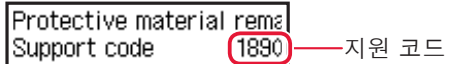


- 7 화면의 설명을 따른 다음 **OK** 버튼을 누릅니다.

- 프린터 화면에 **연결 준비가 되었습니다(Ready to connect)**가 나타나는지 확인하십시오.



? 화면에 오류 메시지(지원 코드)가 나타나는 경우



지원 코드를 확인한 다음, 표시된 코드가 아래에 나와 있는 경우 해당 설명을 따르십시오.

- 1890
보호 재료가 제거되지 않았습니다.
→ 1페이지의 "2. 포장 재료 제거하기"
- 1470
프린트 헤드가 제대로 설치되지 않았습니다.
→ 1페이지의 "3. 프린트 헤드 설치하기"
- 1471
프린트 헤드가 설치되지 않았습니다.
→ 1페이지의 "3. 프린트 헤드 설치하기"
- 1642
잉크가 부족할 수 있습니다.
→ 2페이지의 "4. 잉크 주입하기"

기타 모든 경우에 대한 내용은 **온라인 설명서**를 참조하십시오.

프린터 설정하기

어떤 장치를 연결하려고 합니까?



컴퓨터



컴퓨터 및
스마트폰



스마트폰

프린터를 다른 장치에 연결하지 않고 사용하려면 →7-c

7-a

컴퓨터에 연결하기

여러 컴퓨터를 사용하는 경우 각 컴퓨터에서 아래의 단계를 수행하십시오.



- 1 컴퓨터에서 Canon 웹 사이트에 액세스합니다.

<https://ij.start.canon>



- 2  설정을 선택합니다.

- 3 프린터의 모델 이름을 입력하고 이동을 클릭합니다.

- 4 시작을 클릭합니다.

- 5 이미 프린터 준비를 마쳤으면 연결로 이동을 클릭합니다.

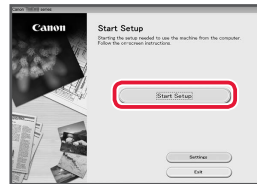
▶▶▶ 참고

다음 단계는 Windows(Windows 10 in S mode 제외) 사용자를 대상으로 합니다.

- 6 다운로드를 클릭합니다.

- 7 다운로드한 파일을 실행합니다.

- 8 **설정 시작(Start Setup)**을 클릭합니다.



- 9 화면의 설명을 따릅니다.

- 이 작업을 완료하는 데 약간의 시간이 소요될 수 있습니다.
- 스마트폰에도 연결하려면 5페이지의 "7-b.스마트폰에 연결하기"를 참조하십시오.

Windows용 Setup CD-ROM 사용하기

CD-ROM에서 **EasySetup.exe**를 더블 클릭한 다음 3단계부터 계속합니다. 인터넷 연결이 없는 경우에는 CD-ROM에서 **win** 폴더를 열고 **SETUP.exe**를 더블 클릭하십시오. 프린터 드라이버가 설치됩니다.

7-b

스마트폰에 연결하기

여러 스마트폰을 사용하는 경우 각 스마트폰에서 아래의 단계를 수행하십시오.



시작하기 전에 다음을 준비하십시오.

- 1 스마트폰에서 Wi-Fi 설정을 활성화하십시오.
- 2 스마트폰을 무선 라우터에 연결하십시오(무선 라우터가 있는 경우).
더 자세한 내용은 스마트폰과 무선 라우터의 설명서를 참조하십시오.

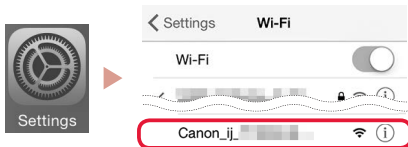
- 1 스마트폰에 "Canon PRINT Inkjet/SELPHY" 앱을 설치합니다.

- 오른쪽에 표시된 QR 코드를 스캔하여 Canon 웹사이트에 액세스한 다음 앱을 다운로드합니다.



- 2 스마트폰의 Wi-Fi 설정을 엽니다. "Canon_ij_"로 시작하는 네트워크 이름(SSID)을 탭합니다. "Canon_ij_"가 나타나지 않는 경우에는 3단계로 이동하십시오.

(iOS 화면의 예)



- 3 설치한 앱을 엽니다.



- 4 앱 화면의 설명에 따라 프린터를 추가합니다.

프린터를 추가한 후 스마트폰에서 인쇄할 수 있습니다.

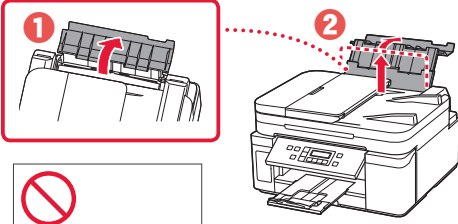
7-c

장치에 연결하지 않는 경우

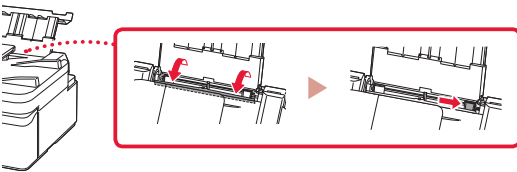
- 1 중지(Stop) 버튼을 누릅니다.
- 2 연결 안 함(Do not connect)을 선택한 다음 OK 버튼을 누릅니다.
- 3 예(Yes)를 선택한 다음 OK 버튼을 누릅니다.

뒷면 트레이에 용지 로드하기

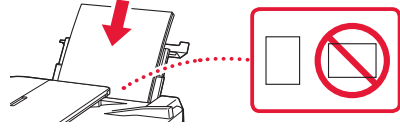
- 1 뒷면 트레이 커버를 열고 용지 받침대를 펼칩니다.



- 2 용지 공급 슬롯 커버를 열고 오른쪽의 용지 가이드를 오른쪽 끝으로 밀어줍니다.

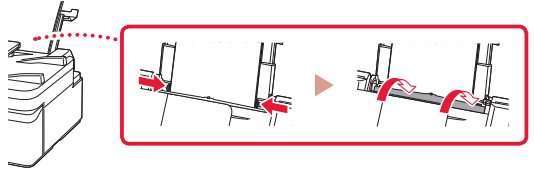


- 3 여러 장의 용지를 인쇄면이 위로 향하게 하여 로드합니다.



- 4 용지 가이드를 용지에 맞춘 다음 용지 공급 슬롯 커버를 닫습니다.

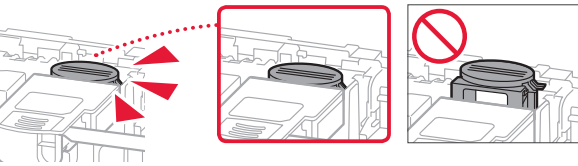
- 화면의 설명에 따라 로드한 용지에 대한 정보를 설정하십시오.



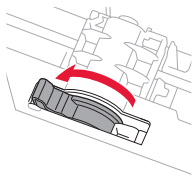
프린터 운반하기

프린터를 이동할 때에는 다음을 확인하십시오. 자세한 내용은 [온라인 설명서](#)를 참조하십시오.

잉크가 새지 않도록 연결 버튼을 완전히 아래로 눌렀는지 확인하십시오.

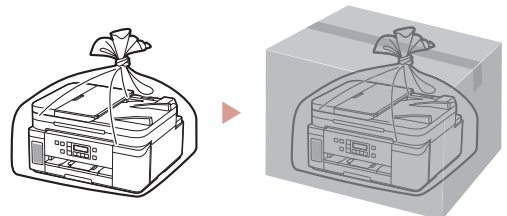


잉크 밸브 레버의 위치가 닫혀 있는지 확인하십시오.



잉크가 새지 않도록 프린터를 비닐 봉지로 포장합니다.

- 바닥이 아래로 향하도록 프린터를 튼튼한 상자에 넣고 안전하게 운반할 수 있도록 보호 재료를 충분히 사용합니다.
- 프린터를 기울이지 마십시오. 잉크가 새 수 있습니다.
- 프린터가 손상되거나 프린터의 잉크가 새 수 있으므로 조심해서 다루고 상자가 뒤집어지거나 눕혀져 있지 않고 수평으로 놓여 있는지 확인하십시오.
- 운송업체에서 프린터를 운송할 때 프린터의 바닥이 아래로 향하도록 상자에 "이 면이 위로" 표시를 붙이십시오. "파손 주의" 또는 "취급 주의" 표시도 붙이십시오.





Access Online Manual

Akses Petunjuk Daring

存取線上手冊

เข้าถึงคู่มือออนไลน์

Truy cập Hướng dẫn sử dụng trực tuyến

온라인 설명서에 액세스

From your browser

จากเบราว์เซอร์ของคุณ

Dari browser Anda

Từ trình duyệt của bạn

從瀏覽器

브라우저에서

