

Canon Video Display DP-V3010

Firmware Update Procedure for Firmware Version 1.3



Firmware Version 1.3 can be used to update the firmware of both the main unit and display controller at the same time.

Please carefully read through the precautions and procedure below before performing the firmware update.

Important: Precautions When Performing the Firmware Update

- Please make sure to back up and store any customized settings to a USB memory device before performing the firmware update. ^(*)
- During the firmware update, please do not turn off the power of the main unit. In addition, please do not remove the USB memory device from the main unit. Failure in following these instructions may result in a malfunction of the main unit.
- It may take more than 10 seconds before the USB memory device can be recognized by the main unit.
- If the firmware update is not successfully completed or if the main unit does not start normally, please contact a Canon information center.

^(*) For the details on the backup procedure, please see the “Export/Import” section in the Video Display DP-V3010 Instruction Manual.

Step 1. Prepare the tools that are necessary for the firmware update

To perform a firmware update on the main unit, the following items are required.

1	USB memory device	A commercially-available USB memory device that has been formatted to FAT16 or FAT32. ^(*1)
2	Firmware update file	update.rom (Bundled with the downloaded DP-V3010-V130.zip)
3	Computer	OS: Computer running Windows or Mac OS X
4	Main unit	DP-V3010
5	AC Power Cord	VT-20 (For the main unit)
6	Display Controller	CL-01
7	Compact Power Adapter	CA-PS700 and AC cable (For the display controller)
8	LAN Cable	LN-30 (For the display controller)

(*1) We do not guarantee the operations of all USB memory devices.

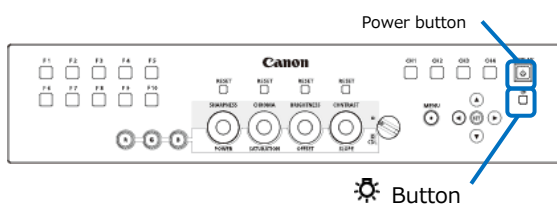
Step 2. Check the firmware version of the main unit and display controller

Check the current firmware version of the main display and display controller to see whether a firmware update is required.


1. Connect the main unit with the display controller.

For the details, please see the “Connecting the Main Unit to the Display Controller” section in the Video Display DP-V3010 Instruction Manual.

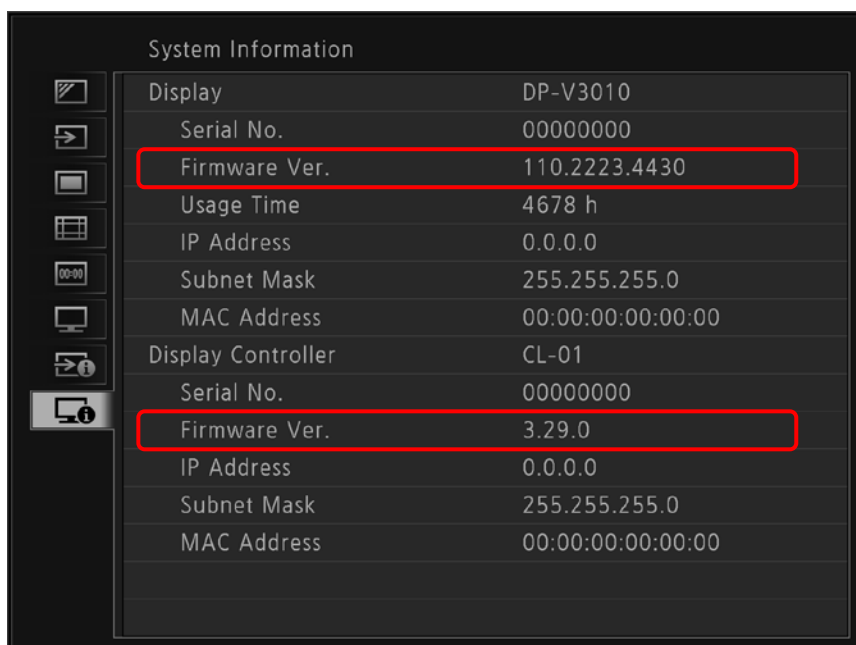
2. Turn on the main power supply switch of the main unit, and then operate the power button on the display controller to turn on the power of the main unit.



Check whether the power indicator on the display controller is lit in green.

* If the power indicator  on the display controller does not light in green, check whether the brightness setting of the display controller is set to Off, or it may be possible that pairing of the main unit with the display controller has not been completed. For the details on pairing, please see the “Pairing” section in the Video Display DP-V3010 Instruction Manual.

3. Press the Menu button on the display controller, and then from the OSD menu, select the “System Information” tab using the ▲ and ▼ buttons to check the “Firmware Ver.” of the main unit and display controller.



Please see the table below to check whether your unit needs to be updated.

Firmware version of the main unit	Firmware version of the display controller	Firmware update
087.1170.4430	3.29.0 or 4.19.0	Firmware update is required.
110.2223.4430	3.29.0 or 4.19.0	Firmware update is required.
1.2	3.29.0 or 4.19.0	Firmware update is required.
1.3	3.29.0	Firmware update is required.
1.3	4.19.0	Firmware update is not required.

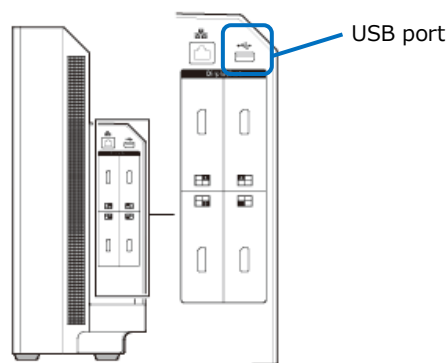
Step 3. Copy the firmware update file to the USB memory device

1. Extract the “DP-V3010-V130.zip” file that you downloaded, and then copy the firmware update file “update.rom” to the USB memory device.

***Make sure to copy the firmware update file to the root directory of the USB memory device.**

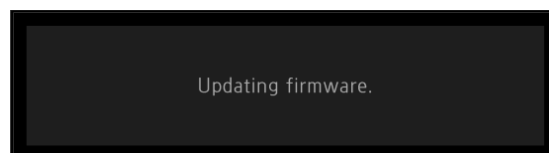
Step 4. Update the firmware of the main unit

1. Insert the USB memory device prepared in Step 3 into the USB port on the main unit.

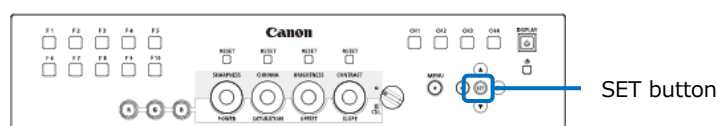
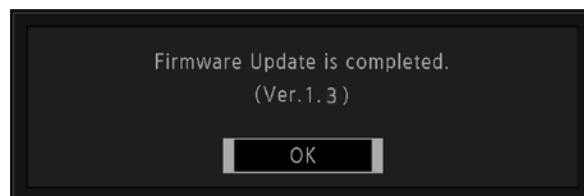


2. The firmware update will begin automatically. (The power indicator will flash in green.)

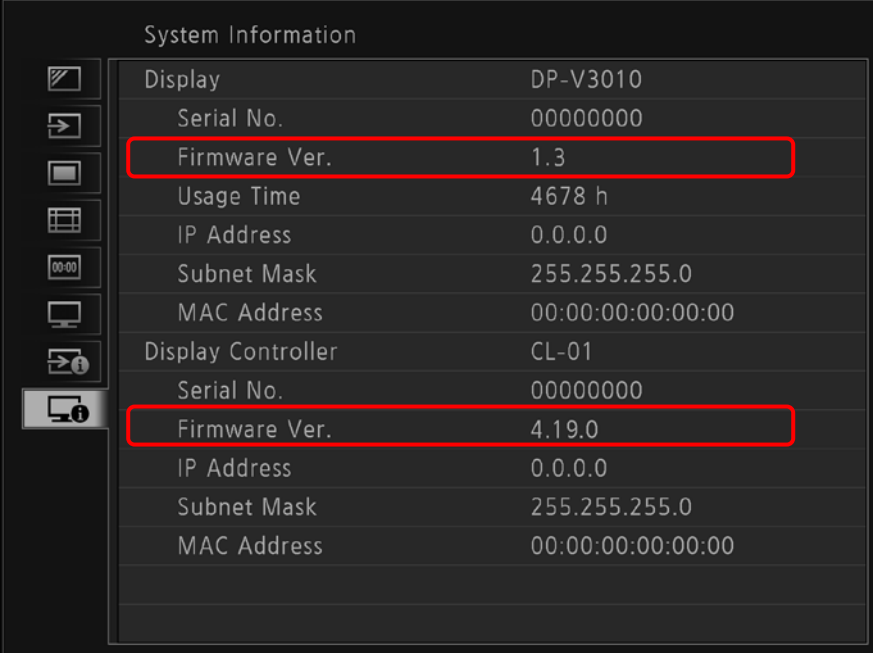
* During the firmware update, the following message will appear on the screen and button operations will be disabled.



3. If the main unit starts automatically, and the following message appears on the display screen, the firmware update has been completed. Press the SET button on the display controller to cancel the “Firmware Update is completed.” message.



4. Remove the USB memory device from the USB port on the main unit. Press the Menu button on the display controller, and then from the OSD menu, use the ▲ and ▼ buttons to select the “System Information” tab to check whether the “Firmware Ver.” for the main unit and display controller is [1.3] and [4.19.0], respectively.



The screenshot shows the 'System Information' OSD menu. On the left is a vertical sidebar with icons for various system settings. The main area displays a list of system parameters in two sections. The first section represents the main unit, and the second section represents the display controller. In both sections, the 'Firmware Ver.' is highlighted with a red rectangular box. The main unit's firmware version is 1.3, and the display controller's firmware version is 4.19.0.

System Information	
Display	DP-V3010
Serial No.	00000000
Firmware Ver.	1.3
Usage Time	4678 h
IP Address	0.0.0.0
Subnet Mask	255.255.255.0
MAC Address	00:00:00:00:00:00
Display Controller	CL-01
Serial No.	00000000
Firmware Ver.	4.19.0
IP Address	0.0.0.0
Subnet Mask	255.255.255.0
MAC Address	00:00:00:00:00:00

Firmware version 1.3 can be used to update the firmware of both the main unit and display controller at the same time. If the firmware update is performed without connecting the display controller to the main unit, only the main unit will be updated, but after the display controller is connected to the main unit, it can also be updated.

Troubleshooting

If the firmware update does not start, please check the following:

- Is the firmware update file saved to the root directory of the USB memory device?
- Is the file name of the firmware update "update.rom"?
- Has the USB memory device been formatted to FAT16 or FAT32?
- Is the security of the USB memory device removed ?

If the message "Failed to update firmware" appears:

During the firmware update, if the file cannot be correctly imported, the message above will appear. Please make sure nothing other than a USB memory device is used.