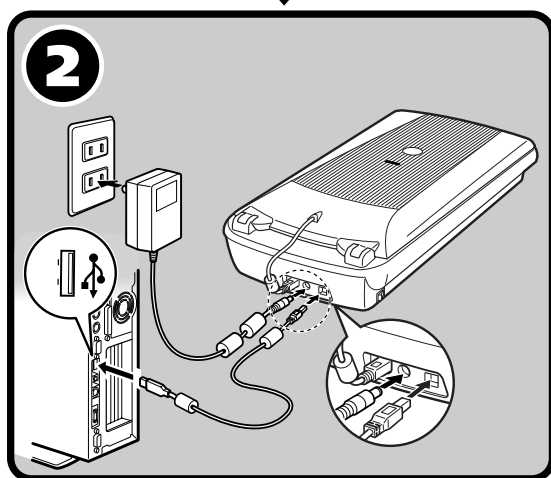
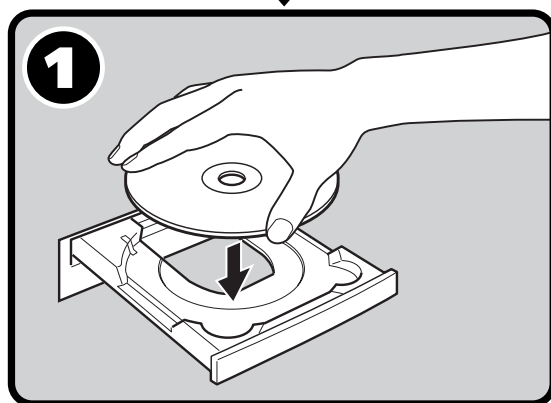


Quick Start Guide

Be sure to install the software programs before connecting the scanner to the computer!



Setup and Scanning

Check the Package Contents p.3

1 Install the Software

Windows p.4

Macintosh p.5

Unlock the Scanning Unit p.6

2 Connect the Scanner p.7

Try Scanning p.8

Try the Additional Features

● Using the Scanner Buttons p.11

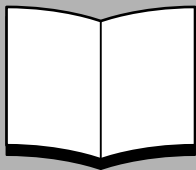
● Scanning Film p.12

● Using the USB 2.0 Interface expansion cards (Windows Only) .. p.16

Please read this guide before operating this scanner. After you finish reading this guide, store it in a safe place for future reference.

Guide to the Manuals

Open the Package



Quick Start Guide (this guide)

This guide describes a series of processes, from opening the package to using the scanner.

READ THIS GUIDE FIRST!



HTML

Scanning Guide (HTML format manual)

Refer to this guide when you have finished setting up the scanner according to the procedures in the *Quick Start Guide*. It describes how to utilize the scanner with the bundled software, and how to solve problems when they occur. You can install this manual onto the hard disk together with the software programs. When you install it, the *Scanning Guide* icon will appear on the desktop. Double-click the icon to view it with a browser program, such as Internet Explorer.



PDF

User's Guides for Application Programs (PDF format manuals)

- ArcSoft PhotoStudio
- ScanSoft OmniPage SE

Select the "View the Electronic Manuals" menu on the CanoScan Setup Utility CD-ROM. To read these manuals, Adobe Acrobat Reader should be installed on your computer.

The socket-outlet shall be installed near the equipment and shall be easily accessible.

Use of a shielded cable with the ferrite core(s) provided with the scanner is necessary to comply with the technical requirements of the EMC Directive.

Warning

When you use this product, you should pay attention to the following legal issues:

- Scanning of certain documents, such as bank notes (bank bills), government bonds and public certificates, may be prohibited by law and may result in criminal and/or civil liability.
- You may be required under law to obtain authorization from a person possessing copyrights or other legal rights to the item being scanned.

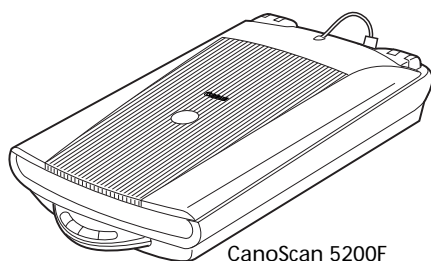
If you are uncertain of the legality of scanning any particular item, you should consult your legal adviser in advance.

- CanoScan and ScanGear are trademarks of Canon Inc.
- Adobe®, Acrobat® and Photoshop® are trademarks of Adobe Systems Incorporated.
- Microsoft and Windows are registered trademarks of Microsoft Corporation in the U.S. and other countries.
- Macintosh, Power Macintosh and Mac OS are trademarks of Apple Computer, Inc., registered in the U.S. and other countries.
- ScanSoft and OmniPage are trademarks of ScanSoft, Inc.
- Other names and products not mentioned above may be trademarks or registered trademarks of their respective companies.

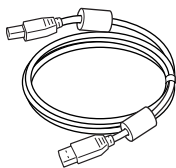
In this guide, Windows XP screen shots are used to illustrate explanations common to all operating systems.

Check the Package Contents

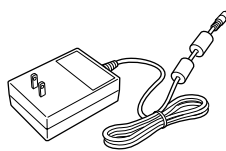
Scanner and Accessories



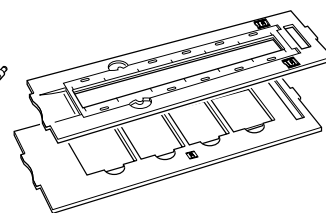
CanoScan 5200F



USB Interface Cable

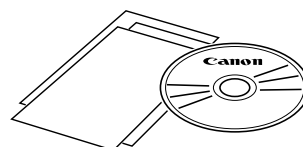


AC Adapter

Film Guides
(for film strip and slides)

Documents and Software Programs

- Quick Start Guide (this guide)
- Additional Documents
- CanoScan Setup Utility CD-ROM



- The two figures in the brackets below indicate the respective sizes of the Windows/ Macintosh versions of the software.
- Approximately 200 MB/ 160 MB (for Windows/Macintosh) of hard disk space on your computer is required to install all the programs. Additional free hard disk space is required to operate the programs.

ScanGear CS (25 MB / 10 MB) - Scanner Driver

It allows you to scan and load images from the scanner.

CanoScan Toolbox (15 MB / 10 MB) - Scanning Utility Program

It enables you to scan images and copy (print), attach images to e-mail messages or save images with simple steps. It also works with the scanner buttons.

ArcSoft PhotoStudio (35 MB / 20 MB) - Image Editing Program

It allows you to load images from the scanner, edit and retouch them, and apply special effects and enhancements.

ScanSoft OmniPage SE (90 MB / 80 MB) - OCR (Optical Character Recognition) Program

It converts characters scanned from a book, magazine or newspaper into text data for editing or digital transmission.

Adobe Acrobat Reader (25 MB / 30 MB) - PDF File Reader Program

Electronic manuals for the above software programs (HTML (10 MB) and PDF manuals)

Install the Software Windows



- With Windows XP/2000, you should log on with an administrator user name when you install or uninstall software programs.
- If you are using a computer which does not equip USB 2.0 interface by standard, refer to P. 16.

1 Turn the computer on.

If the "Found New Hardware Wizard" or "Add New Hardware Wizard" appears, click [Cancel].

2 Place the CanoScan Setup Utility CD-ROM in the drive.

After you select your language, the CanoScan Setup Utility main menu will display.

3 Click [Install the Software].

Read the SOFTWARE USER LICENSE AGREEMENT. Click [Yes] if you accept the terms.

The [Install] window will display.

4 Click [Start Installation].

You will install five software programs and the *Scanning Guide* (HTML format manual).

5 The installation procedure will start.

Follow the on-screen message prompts and click [Yes] or [Next] to continue the installation.



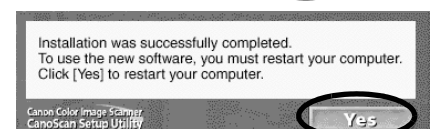
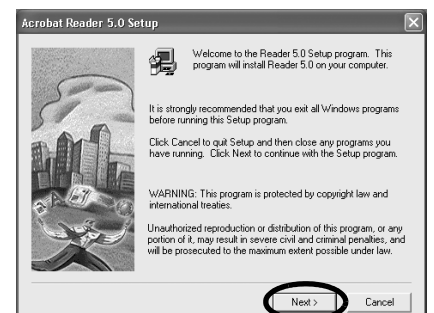
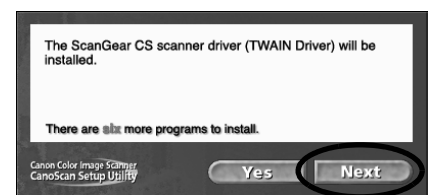
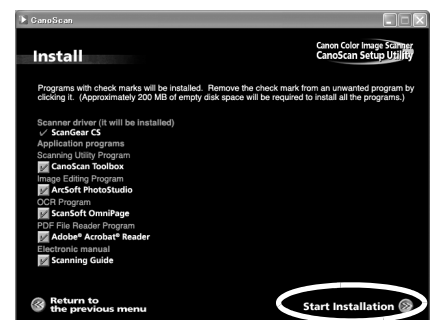
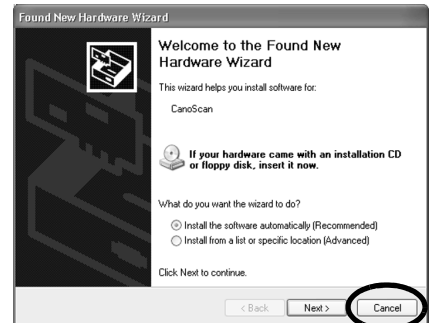
- In few cases, your operating system may require a restart. Follow the on-screen messages to restart and resume installation.

6 When the installation is complete, click [Yes].

The computer will restart.

7 After Windows restarts, remove the CD-ROM from the drive and store it in a safe place.

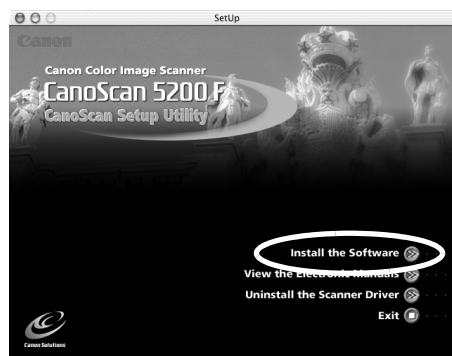
➔ Continue on P. 6.



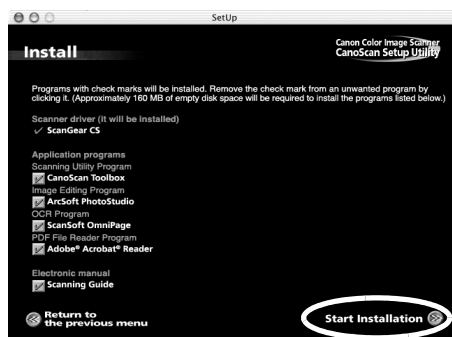
Install the Software **Macintosh**

- 1** Turn the computer on.
Make sure to log in with the first created administrator to install the software. You cannot install the software when logged in using added administrator accounts.
- 2** Place the CanoScan Setup Utility CD-ROM in the drive.
- 3** Double-click the CD-ROM icon.
- 4** Double-click the [SetUp] icon.
After you select your language, the CanoScan Setup Utility main menu will display.
- 5** Click [Install the Software].
Read the SOFTWARE USER LICENSE AGREEMENT. Click [Yes] if you accept the terms.

The [Install] window will display.



- 6** Click [Start Installation].
You will install five software programs and the *Scanning Guide* (HTML format manual)

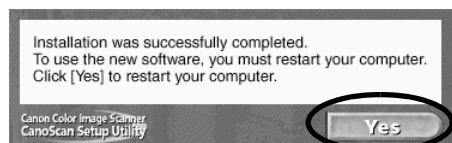
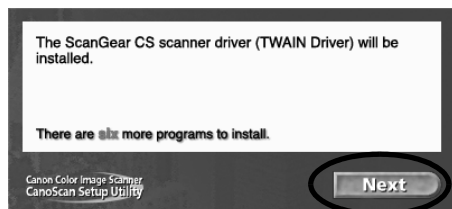


- 7** The installation procedure will start.
Follow the on-screen message prompts and click [Yes], [Next] or [Install] to continue the installation.

If a verification dialog appears, input the Administrator's name and password.

- 8** When the installation is complete, click [Yes].
The computer will restart.

- 9** After restarting, remove the CD-ROM from the drive and store it in a safe place.



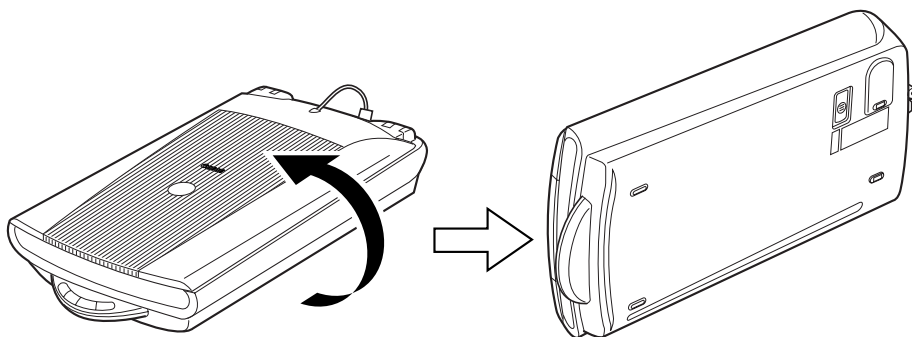
Unlock the Scanning Unit



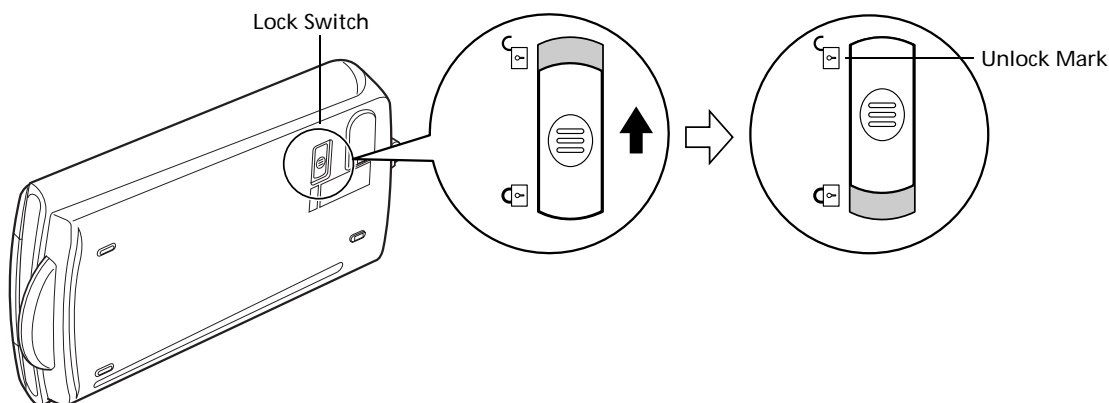
- Unlock the scanning unit before connecting the scanner to the computer. If it is left locked, a malfunction or other problem may occur.
- Do not tilt the scanner more than 90 degrees from horizontal when releasing the lock.
- When locking the scanner, do not lift up the back and tilt the front (scanner button location) downward. You may be unable to set the lock.

1 Peel the seals off the scanner.

2 Gently turn the scanner over.



3 Push the lock switch toward the unlock mark (🔓).



4 Return the scanner to a horizontal position.



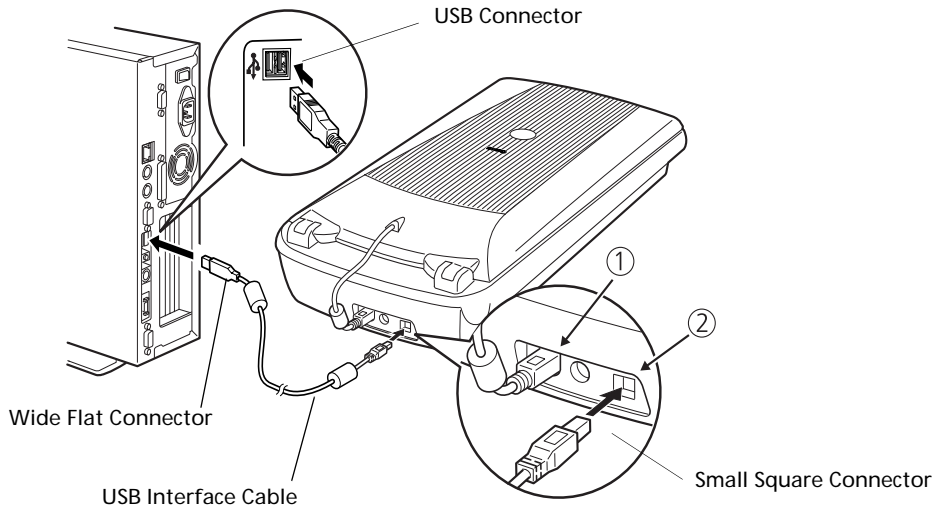
- When carrying or transporting the scanner, always lock the scanning unit by pushing the lock switch toward the lock mark (🔒).

Connect the Scanner

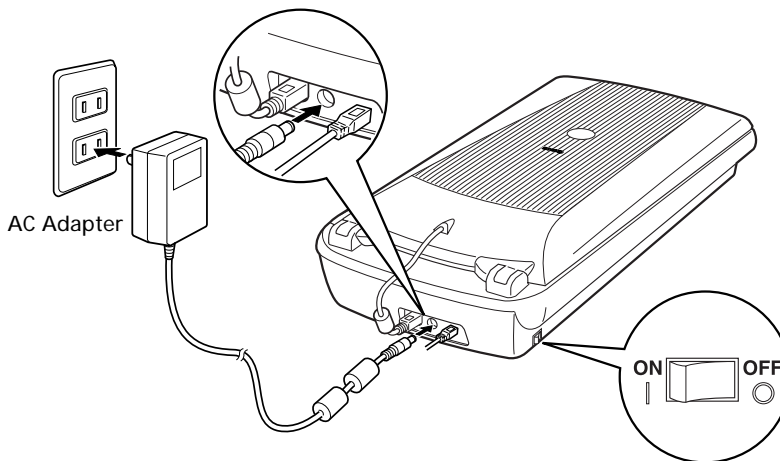


- Make sure that the scanning unit is unlocked. (P. 6)

- 1 Attach the FAU cable to the FAU connector on the back of the scanner (①).
- 2 Connect the scanner to the computer with the supplied USB interface cable (②).



- 3 Attach the supplied AC adapter to the scanner.
- 4 Press (I) to turn the power on.



- Only use the USB interface cable and the AC adapter provided with the scanner. Use of other cables or adapters may lead to a malfunction.
- When the scanner is connected to the USB 1.1 port on Windows XP, do not worry if the "HI-SPEED USB Device Plugged into non-HI-SPEED USB Hub" message appears. You can operate the scanner in this condition without problems.

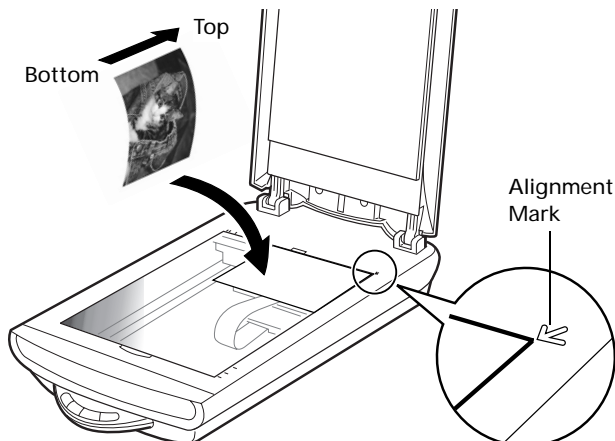
Try Scanning

The following steps explain how to scan with ArcSoft PhotoStudio.



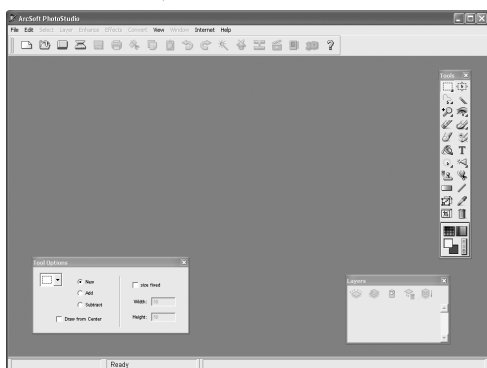
- Make sure that the power switch is turned on.

- 1 Place a photo or a picture on the glass by aligning its top edge with the alignment mark, and close the document cover.



Windows

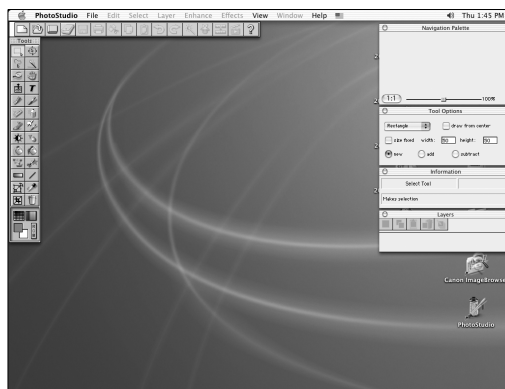
- 2 Select [Start], [Programs] or [All Programs], [ArcSoft PhotoStudio 5.5] and [PhotoStudio 5.5].



PhotoStudio will start.

Macintosh

- 2 Double-click the [Applications] folder followed by the [PhotoStudio] folder and the [PhotoStudio] icon.

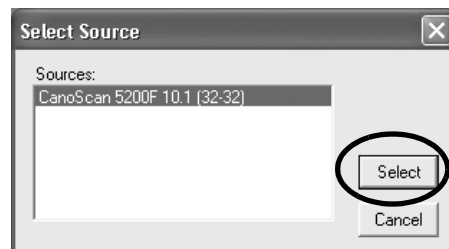


PhotoStudio will start.

- 3** Click the [File] menu and choose [Select Source].
Select your scanner model name and click the [Select] button for Windows or the [OK] button for Macintosh.



- After you set this setting the first time, you do not need to set it from the second time onward with the same scanner.
- You will need to reset this setting if you select a different scanner or a digital camera.



- 4** Click the Acquire icon  or click the [File] menu and select [Acquire].

ScanGear CS will start.



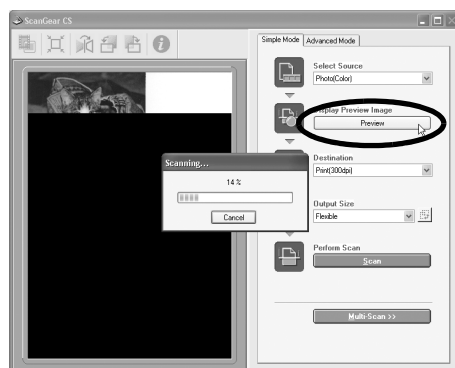
- 5** Select the [Select Source].
You can select from the following options.
Photo (Color)/Magazine (Color)/Newspaper (B&W)/Document (Grayscale).



- 6** Click [Preview].
After calibration, the preview scan will start and gradually display the image.
The image is automatically cropped at its original size.
If you want to trim the image further, drag the mouse diagonally to select the area.



- Do not open the document cover while a scan is in progress.



- 7** Select the [Destination].
You can select [Print (300 dpi)] or [Image display (150 dpi)].
When [Print (300 dpi)] is selected, the output resolution is set to 300 dpi. When [Image display (150 dpi)] is selected, it is set to 150 dpi.

[Print (300 dpi)] is selected in this example.



8 Select the [Output Size].

You can select from the following options.

- If you selected [Print (300 dpi)] in Step 7:

Flexible / 4" x 6" / A4 / Letter / Add/Delete

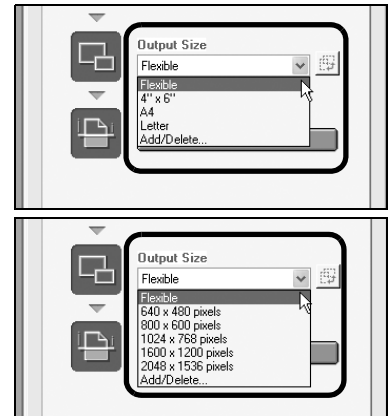
- If you selected [Image display (150 dpi)] in Step 7:

Flexible / 640 x 480 / 800 x 600 / 1024 x 768 / 1600 x 1200 / 2048 x 1536 / Add/Delete

With the [Flexible] option, the scan area enclosed by the dotted line (cropping frame) will be scanned at the same scale as the original. You can change the cropping frame.

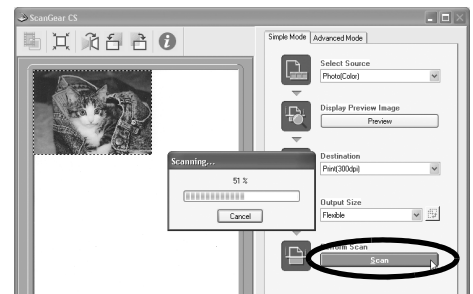
Other than [Flexible], you can select the 4" x 6", A4, Letter, and Add/Delete options. Expand or decrease the cropping frame to correspond to the size of the paper for printing.

If you selected [Image Display (150 dpi)] in Step 7, you can select an output size in pixels to match the sizes used by computer monitors and digital cameras.



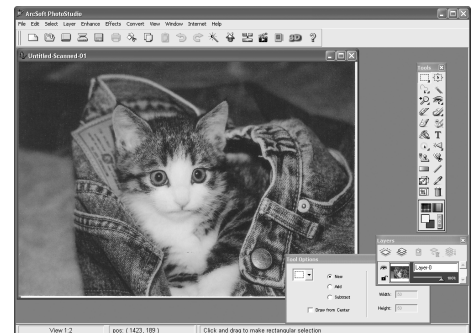
9 Click [Scan].

The final scan will start.



10 Click close box [X] (Windows) or [X] (Macintosh) in the ScanGear CS window to close it.

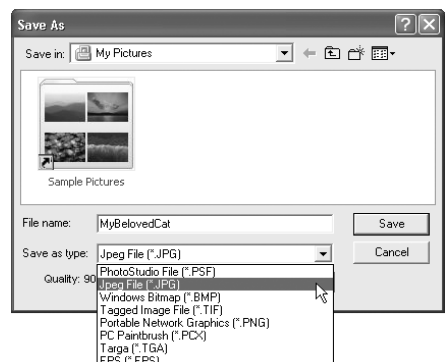
The scanned image will appear in the PhotoStudio window.



11 Save the scanned image.

Click the [File] menu and select [Save As]. Select the folder where you wish to store the image file, enter a file name, select a file type (JPEG format is recommended) and click [Save].

12 Click close box [X] (Windows) or [X] (Macintosh) in the PhotoStudio window to close it.



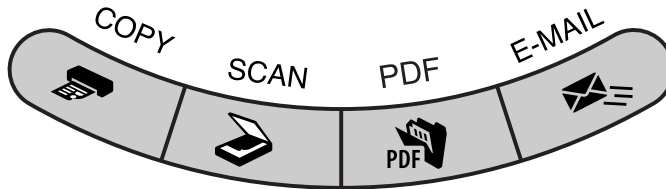
- If the scanner does not perform as described above, read the "Troubleshooting" section of the *Scanning Guide* (HTML format manual).
- For details about the bundled software programs, read the *Scanning Guide* or the User's Guide (PDF format manual) for each software program on the CanoScan Setup Utility CD-ROM.

Using the Scanner Buttons

You can use the four convenient buttons on the front of the scanner to scan and perform related tasks easily with a single touch of the button. Place an item on the scanner before pressing a button.



- To use these buttons, ScanGear CS, CanoScan Toolbox, ArcSoft PhotoStudio and Acrobat Reader should be installed from the CanoScan Setup Utility CD-ROM.



COPY Button

To print (copy) the scanned image with a printer:

1 Press the [COPY] button.

The scanner will scan the item.
The scanned image will print.

- The printer driver should be installed and the printer should be on-line to use this function.



PDF Button

To save the scanned image as a PDF file:

1 Press the [PDF] button.

The scanner will scan the item.
Multiple items can be scanned continuously.
The scanned image will be saved as a PDF document and appear in Adobe Acrobat Reader.

A PDF (Portable Document Format) document is a file format that can be displayed and printed with application program such as Adobe Acrobat Reader/ Adobe Reader. It is easy to create PDF files for your images by using the PDF button on the scanner or the PDF button in CanoScan Toolbox. You can also make PDF files with multiple pages and create text-searchable PDF files.



SCAN Button

To open the scanned image in the PhotoStudio window:

1 Press the [SCAN] button.

The scanner will scan the item.
The scanned image will appear in the PhotoStudio window.



E-MAIL Button

To attach the scanned image to a new e-mail message:

1 Press the [E-MAIL] button.

2 The [E-mail software selection] dialog will appear. Select an option from the list and click [OK].

This step is required only for the first scan.
The e-mail software will start and the scanned image will be attached in a new message window.
The scanner will scan the item.

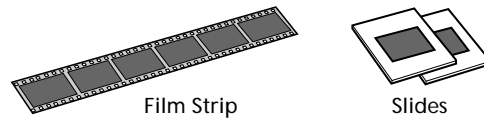


- If you press the [Cancel] button while scanning, you can change the default settings for scanning. For changing settings, refer to the *Scanning Guide* (HTML format manual).
- To use the E-MAIL Button, one of the following e-mail programs should be installed and enabled.

For Windows: Microsoft Outlook Express, Microsoft Outlook, Eudora or Netscape Messenger. (Some mail programs are required to set the MAPI function on.)
For Macintosh: Mail (Mac OS X 10.2 or later), Eudora or MS Entourage.

Scanning Film

You can scan 35 mm film (film strip or slides) with this scanner.



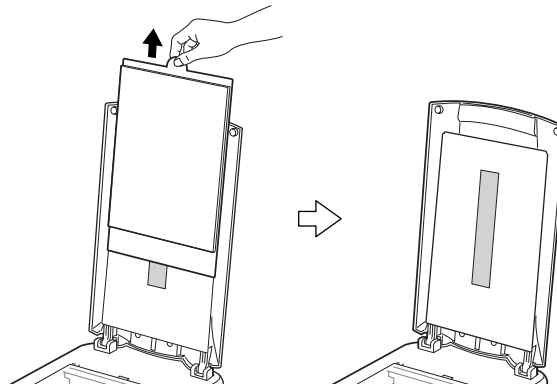
Positioning the Film

Use the following procedures to insert the film into the Film Guide.



- Make sure that the FAU Cable is connected to the FAU connector on the back of the scanner.

- 1** Remove the protective sheet from the document cover.
Slide the protective sheet up to remove it.



When you finish scanning, replace the protective sheet by aligning it with the grooves in the document cover and sliding it downward into place.



- Store the protective sheet in a safe place so that it will not get bent or broken.
- Always replace the protective sheet when you are not scanning film to prevent the light source section from getting scratched.

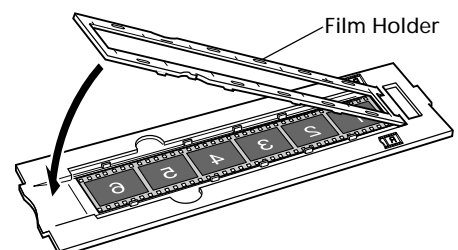
- 2** Insert the film into the Film Guide.



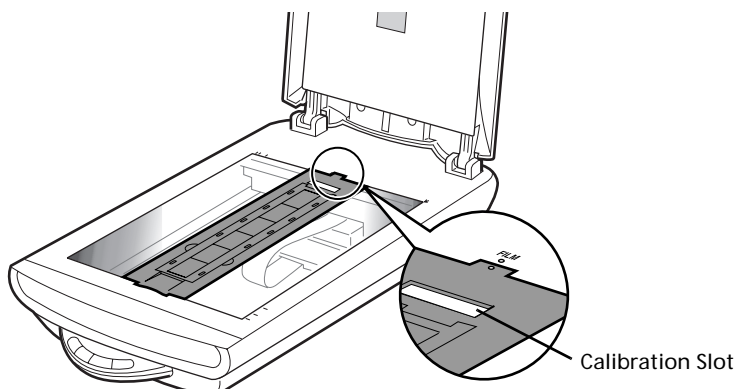
- Hold the film by the edges with your fingertips to avoid getting fingerprints or dirt on the film surface.
- Use a blower brush to remove any dust from the film, document glass or light source unit.
- Do not block the calibration slot on the Film Guide when you are scanning film. Colors will not be scanned correctly if the calibration slot is obstructed.

Film Strip

- ① Open the Film Holder. Place the film face down with the frames in reverse order. To close the Film Holder, squeeze it gently inward while pressing downward so that all the tabs on its outer edges fit into the slots in the Film Guide. If the Film Holder will not close properly, reposition the film so that it is clear of the Film Guide slots and try again.



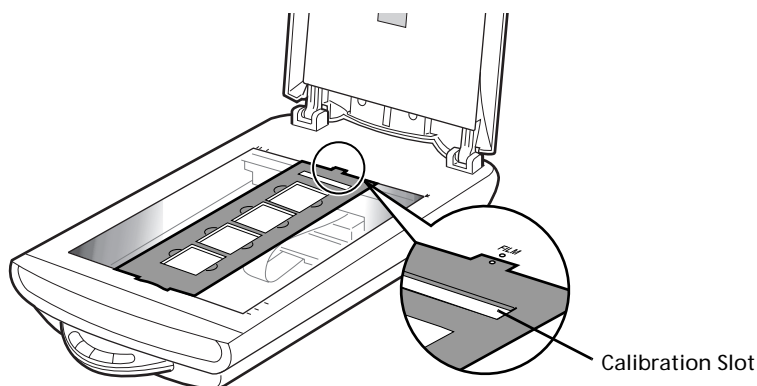
- ② Align the Film Guide's tab with the FILM symbol on the document glass of the scanner.



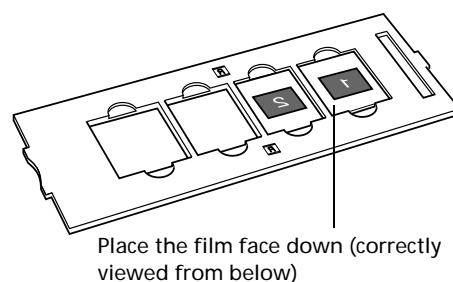
- Place a black piece of paper over any gap to shield the light if you are inserting a film strip with 5 or fewer frames, or if the edge of a scanned image appears whitened.

Slides

- ① Align the Film Guide's tab with the FILM symbol on the document glass of the scanner.



- ② Place a slide or slides face down in the Film Guide as shown in the diagram to the right.



3 Close the document cover.



- You can purchase the Accessory Kit for CanoScan 5200F (CSAK-5200F) if the protective sheet or Film Guides are lost or damaged.

Scanning Film

The following steps explain how to scan the film with ArcSoft PhotoStudio.

1 Press the power switch on the scanner's left side to set it the (I) position.

2 Start ArcSoft PhotoStudio.

Refer to step 2 on page 8 for procedures.

3 Start ScanGear CS.

Refer to step 4 on page 9 for procedures.

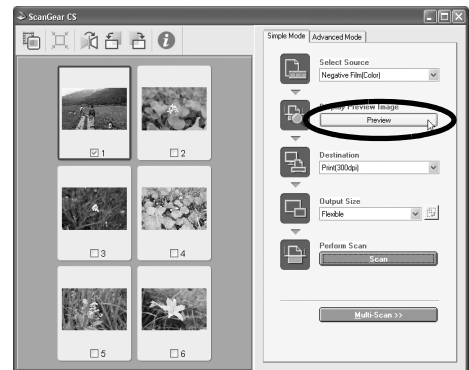
4 Select the [Select Source].

You can select from the following options for films.
Negative Film (Color) / Positive Film (Color)



5 Click [Preview].

ScanGear CS will display the preview image(s).



6 Place a check mark beside the number(s) of the frame(s) to be scanned.

A check mark only appears beside the first frame by default. You can scan multiple frames in one step if you place check marks beside the numbers of each frame you wish to include.

7 Select the [Destination].

You can select [Print (300 dpi)] or [Image display (150 dpi)]. When [Print (300 dpi)] is selected, the output resolution is set to 300 dpi. When [Image display (150 dpi)] is selected, it is set to 150 dpi.

[Print (300 dpi)] is selected in this example.



8 Select the [Output Size].

You can select from the following options.

- If you selected [Print (300 dpi)] in Step 7:

Flexible / 4" x 6" / A4 / Letter / Add/Delete

- If you selected [Image display (150 dpi)] in Step 7:

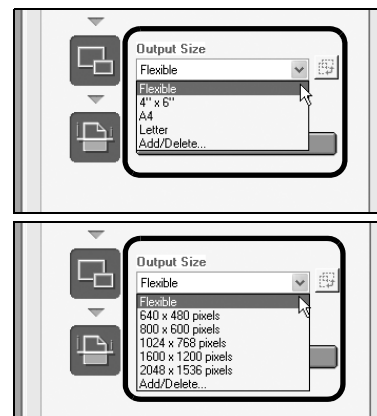
Flexible / 640 x 480 / 800 x 600 / 1024 x 768 / 1600 x 1200 / 2048 x 1536 / Add/Delete

[Flexible] is selected in this example.

The Flexible option scans at an enlarged size equivalent to the 4" x 6" size.

Selecting an option other than [Flexible] in the [Image Display (150 dpi)] category allows you to select the output size in pixels.

You can scan film at the correct dimensions for computer displays (screen area) and digital cameras.



9 Click [Scan].

The final scan will start.

When the scan is complete, click the ScanGear CS close box

✕ (Windows) or ⓧ (Macintosh).

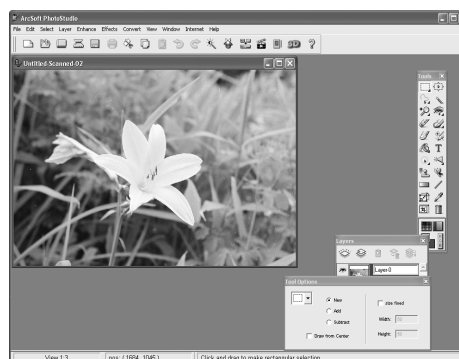
The scanned image will appear in ArcSoft PhotoStudio.



10 Save the scanned image.

Click the [File] menu and select [Save As]. Select the folder where you wish to store the image file, enter a file name, select a file type (JPEG format is recommended) and click [Save].

11 Click close box ✕ (Windows) or ⓧ (Macintosh) in the PhotoStudio window to close it.



- If the scanner does not perform as described above, read the "Troubleshooting" section of the *Scanning Guide* (HTML format manual).
- For details about the bundled software programs, read the *Scanning Guide* or the User's Guide (PDF format manual) for each software program on the CanoScan Setup Utility CD-ROM.

Using the USB 2.0 Interface expansion cards (Windows Only)

To Switch to USB 2.0

If your computer is equipped with USB 1.1, you can switch to the USB 2.0 environment for faster scanning by purchasing and installing one of the USB 2.0 expansion cards available on the market. Please note that Macintosh computer with USB 2.0 Hi-Speed interface expansion card is not supported.

Compatible USB Expansion Cards/Hubs

Please use one the following USB expansion cards/hubs that have been verified by Canon for compatibility.

Expansion Cards

- Adaptec USB2connect 5100: PCI bus
- Adaptec USB2connect 3100LP: PCI bus
- Adaptec USB2connect 2000LP: PCI bus
- Adaptec DuoConnect: PCI bus



Hubs

- Adaptec XHUB4
- Adaptec XHUB4PLUS
- Adaptec XHUB7PLUS

For installation procedures, please read the instructions that accompany the USB expansion card/hub.

Confirming the USB Version

Use the following procedures to confirm whether your computer is equipped with a USB version 1.1 or 2.0 interface.

- 1 Start ScanGear CS.
- 2 Click the information icon  in the upper portion of the ScanGear CS window.
- 3 Read the contents of the Interface category in the displayed window. USB 1.1 will show as "USB 1.1" and USB 2.0 as "USB 2.0."
- 4 Click the close box  to close the window.



Troubleshooting the USB2.0 Hi-Speed Interface

If the scanner is not operating correctly via the USB2.0 Hi-Speed interface, follow the steps below to troubleshoot it.

- 1 Ensure that you use the USB cable supplied with the scanner.
- 2 Connect the scanner directly to a USB port on the computer, not through a USB hub.
- 3 With the Microsoft USB 2.0 driver, if the scanner is not recognized by the computer after installing ScanGear CS:
 - Detach the AC adapter and attach it again.
 - Detach the USB cable and attach it again.
- 4 Use the following procedures to confirm that the computer correctly recognizes the USB expansion card and the scanner.
 1. Open the Windows [Device Manager] and confirm that your scanner name appears below the [Imaging Device] category.
 2. Confirm that [Adaptec AUA-xxxx], [NEC PCI to USB Enhanced Host Controller] or [Intel PCI to USB Enhanced Host Controller] appears below the [USB (Universal Serial Bus) Controllers] category.
 3. Confirm that the USB expansion card is correctly installed into the computer and that the scanner is attached to its port.
 4. If you use more than two devices via USB2.0 Hi-Speed interface, try to disconnect other devices than the scanner.

Specifications

		CanoScan 5200F
Scanner Type		Flatbed
Scanning Element		CCD 6-line color
Light Source		Cold cathode fluorescent lamp
Optical Resolution		2400 x 4800 dpi
Selectable Resolution		25 - 9600 dpi
Scanning Bit Depth	Color	16 bit input / 16 bit or 8 bit output for each color (RGB)
	Grayscale	16 bit input / 16 bit or 8 bit output * ¹
Scanning Speed*² (Photo or Document)	Color	7.125 msec./line (1200 dpi), 8.25 msec./line (2400 dpi)
	Grayscale, B&W	7.125 msec./line (1200 dpi), 8.25 msec./line (2400 dpi)
Scanning Speed*² (Film)	Color, GrayScale, B&W	8.25 - 123.75 msec./line
Preview Speed*³		Approximately 5 sec.
Interface		USB 2.0 Hi-Speed * ⁴ , USB (USB 1.1 equivalent)
Maximum Document Size		A4/Letter: 216 x 297 mm
Film Type/Number of Frames		35 mm strip (negative/positive)/6 frames
		35 mm slide (negative/positive)/4 frames
Scanner Buttons		4 buttons: COPY, SCAN, PDF, E-MAIL
Operating Range	Temperature	10°C to 35°C (50°F to 95°F)
	Humidity	10% to 90% RH, 20% to 80% RH when scanning film (without condensation formation)
Power Requirements		AC adapter (100/120/230/240V) * ⁵
Power Consumption		In operation: 13.5 watts maximum, Stand-by: 4 watts Power Switch Off: 1.7 watts (Using supplied AC adapter)
Maximum Exterior Dimensions		285 x 512 x 112 mm
Weight		Approximately 4.1 kg

*¹ 16 bit output supports only for film scanning.

*² USB 2.0 Hi-Speed mode on Windows PC. Transfer time to computer is not included.

*³ Calibration processing time is not included.

*⁴ Note that Macintosh computer with USB 2.0 Hi-Speed interface expansion card is not supported.

*⁵ Type of AC adapter depends on the area where the scanner is purchased.

• Specifications are subject to change without notice.



- Before you upgrade to Windows XP from Windows 98/Me/2000, you must uninstall ScanGear CS and CanoScan Toolbox using the "Uninstall the Software" menu of the CanoScan Setup Utility CD-ROM. The scanner may not work if you upgrade to Windows XP with these programs still installed. After upgrading to Windows XP, reinstall ScanGear CS and CanoScan Toolbox according to the steps on page 4. For details, please read the "Troubleshooting" section of the *Scanning Guide* (HTML format manual).

System Information

This form should be used to record the operating environment for the purchased scanner. If any problems occur with the scanner, you will need this information when you contact our Customer Support Help Desk. Be sure to record the information and store it in a safe location.

- This information is also required to request a repair under warranty. Make sure you record the information and store it in a safe location.
- Guaranteed servicing for this equipment will expire five years after production ceases.

Date of Purchase:

Dealer Tel:

Dealer Address:

Scanner Model: CanoScan 5200F

Serial Number (on the back of the equipment):

• About the Computer Used

Manufacturer:

Model:

CPU:

Clock Speed:

MHz

Memory Capacity (RAM): MB

Hard Disk Capacity: MB

Space Available:

MB

OS: Windows ☐ XP ☐ Me ☐ 2000 ☐ 98

Macintosh ☐ OS X v10.1 ☐ OS X v10.2 ☐ OS X v10.3

Monitor Type:

Monitor Size:

inches

Printer:

Manufacturer:

Type of Printer:

Printer Resolutions:

Installed Virus Protection Program:

Installed Compression Program:

On-Board Expansion Cards:

Attached Peripherals:

Connected Network System:



As an ENERGY STAR Partner, Canon Inc. has determined that this model meets the ENERGY STAR Program for energy efficiency.

The International ENERGY STAR Office Equipment Program is an international program that promotes energy saving through the use of computers and other office equipment. The program backs the development and dissemination of products with functions that effectively reduce energy consumption. It is an open system in which business proprietors can participate voluntarily. The targeted products are office equipment such as computers, displays, printers, facsimiles, copiers, scanners and multifunction systems. Their standards and logos are uniform among participating nations.