



Unpack the Printer

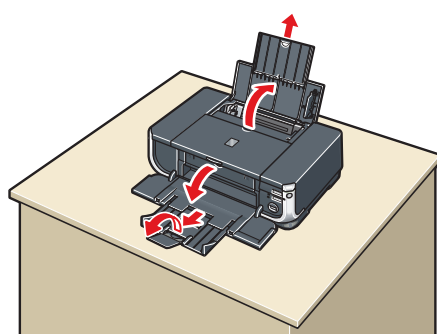
- Please confirm the included items against the illustration printed on the lid of the packing box.
- A USB cable is necessary to connect the printer with your computer.

QT5-0427-V02

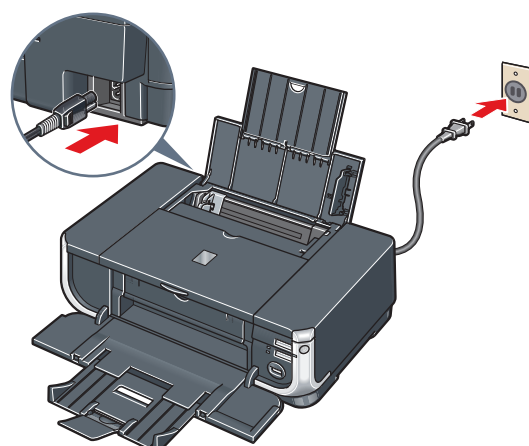
1 Prepare the Printer

- Place the printer on a flat and horizontal surface, and do not place any objects in front of the printer. Press the Open Button to open the Paper Output Tray, and extend the Paper Output Tray Extension. Open the Paper Support and extend the Paper Support Extension.

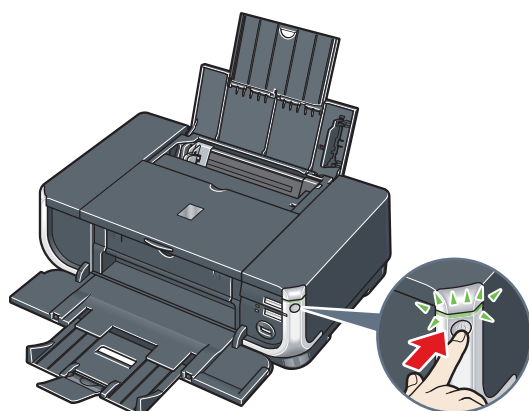
Caution
Before turning on the printer, remove all of the shipping tapes.



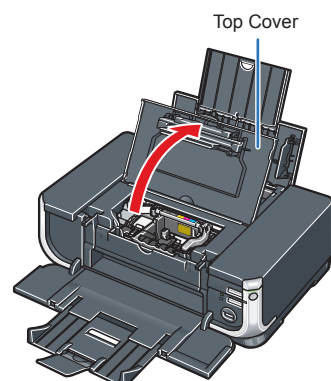
- Plug the power cord in the back of the printer and connect the other end to the wall outlet.



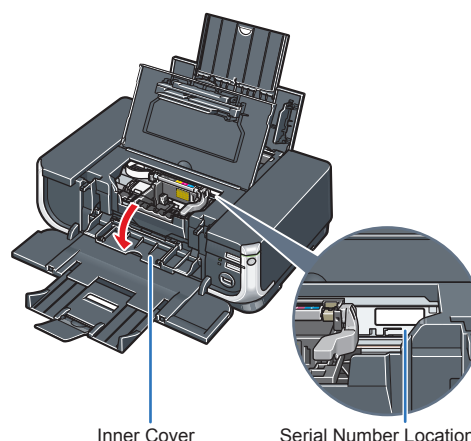
- Press the **POWER** button to turn on the printer.



- Open the Top Cover. The Print Head Holder moves to the center.

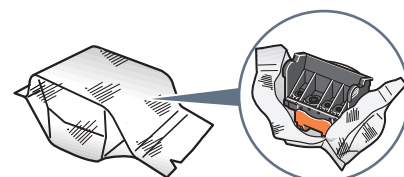


- Open the Inner Cover. Write down the serial number located inside the printer. You will need this to register your product.



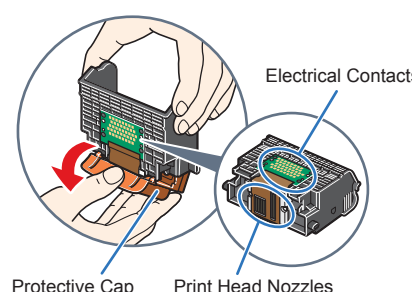
2 Install the Print Head

- Remove the Print Head from its package.



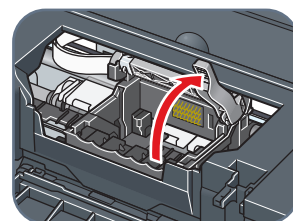
Caution
There may be some transparent or light blue ink on the inside of the bag the print head comes in, or the inside of the protective cap - this has no effect on print quality. Be careful not to get ink on yourself when handling these items.

- Remove the orange protective cap from the Print Head and discard it.

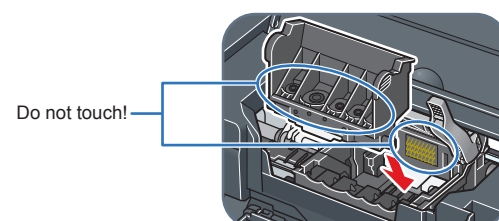


Note
Do not touch the print head nozzles and the electrical contacts.

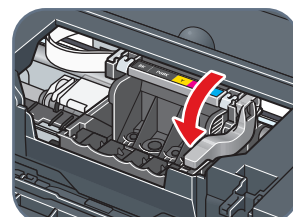
- Firmly raise the Print Head Lock Lever until it stops.



- Insert the Print Head.



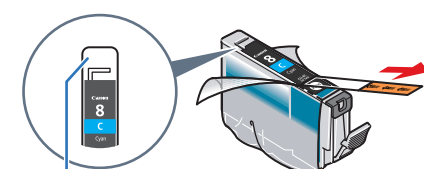
- Lower the Print Head Lock Lever carefully.



Important
If the Top Cover is left open for more than 10 minutes, the Print Head Holder moves to the right. Close and reopen the Top Cover to return the Holder to the center.

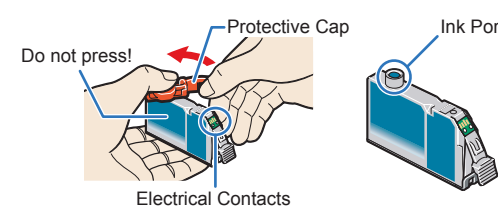
3 Install the Ink Tanks

- Peel back the orange tab completely and remove the plastic wrapper from the ink tank.



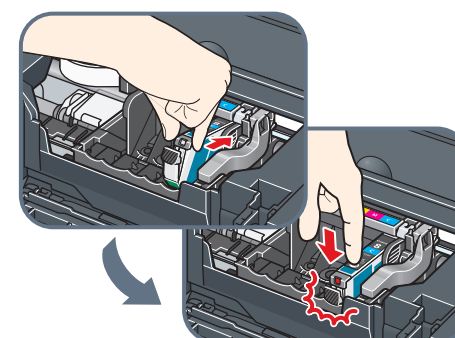
If the orange-colored protective film is not removed completely, problems with printing may occur.

- Twist off and discard the orange protective cap located on the bottom of the ink tank.

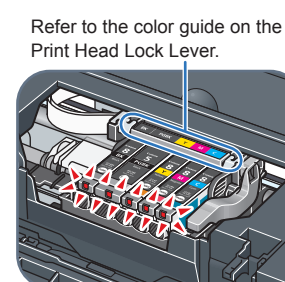


Important
• Do not touch the electrical contacts.
• Do not touch the ink port.

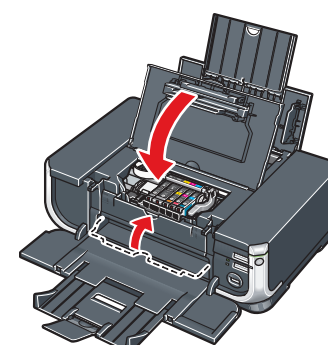
- Insert the ink tank into the right-hand slot and press the **IN** mark on the ink tank until it clicks into place.



- Make sure the ink lamp lights red.



- Close the Inner Cover and the Top Cover.



Note
If the **ALARM** lamp on the printer flashes orange after you have closed the Top Cover, refer to "ALARM Lamp Flashes Orange" in "Troubleshooting" of the User's Guide.

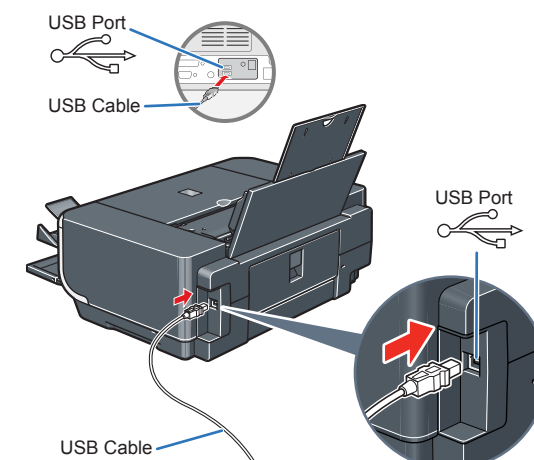
4 Connect the Printer and Load Paper

Important
Once you have installed the ink tanks, the **POWER** lamp will flash green. Wait for about 2 minutes, until the **POWER** lamp stops flashing and changes to steady, non-flashing green and the printer has stopped making operating noises, before proceeding.

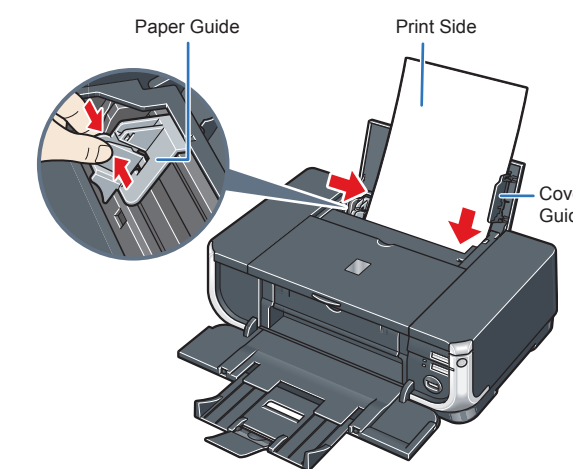
- TURN THE PRINTER OFF.**

Important
Be sure the printer is off before continuing, or the computer will attempt to install the printer driver before the printer is ready.

- Connect one end of the USB cable to the computer, the other to the printer.



- Pinch the Paper Guide and slide it to the left end. Load a sheet of letter- or A4-size blank paper in the Auto Sheet Feeder, align the paper with the right side of the Cover Guide, then slide the Paper Guide against the paper stack.



Hardware setup is complete.

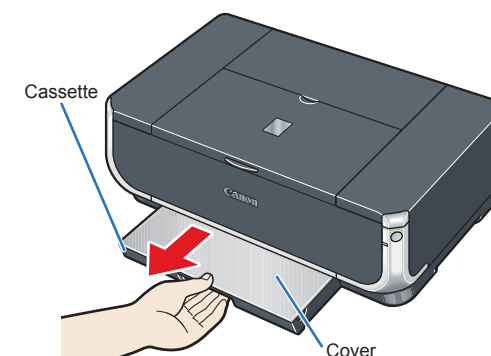


Cassette Loading

You can load paper in both the Auto Sheet Feeder and Cassette.

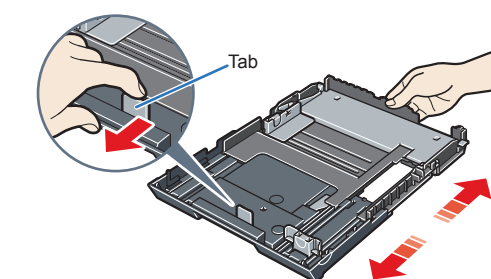
Note
At purchase, the printer is set to feed from the Auto Sheet Feeder.

- Pull out the cassette from the bottom of the printer.

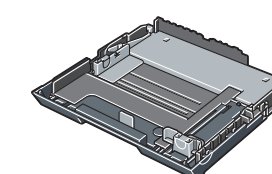


- Remove the cover of the cassette.

- For A5 or larger sized paper, pull the tab towards you to unlock and extend the cassette.



A5 or larger
(nonstandard-size paper: 203 mm / 8 inches or more in length)



5" x 7" or smaller
(nonstandard-size paper: less than 203 mm / 8 inches in length)

- Load the paper into the cassette with the print side facing **DOWN**.

Note
Loading paper in the cassette provides additional paper handling flexibility. For additional information refer to the User's Guide.

Windows® Printer Driver Installation and Print Head Alignment



- Note**
- The screens below refer to Windows XP Service Pack 2 installation. Screens may vary depending on the operating system you are using.
 - For Windows XP or Windows 2000, log on to Windows as a member of the Administrators group before continuing.
 - Before installing the driver, disable all anti-virus programs and automatically loading programs.

- 1 Be sure to **TURN THE PRINTER OFF** before continuing.
- (1) Press the **POWER** button.
- (2) Make sure that the **POWER** lamp stops flashing.

- 2 Turn the computer on and start Windows.
- Important**
If you see the **Found New Hardware Wizard**, remove the **USB** cable. Click **Cancel** to quit the screen. Next, turn off the printer. Then proceed from step 3 to install the printer driver.



- 3 Insert the Setup CD-ROM. The setup program should run automatically.
- Note**
The setup program should run automatically. If the installer in the CD-ROM does not run automatically, click **Start** and select **My Computer**, then double-click the **CD-ROM** icon.

- 4 When the main menu appears, click **Easy Install**.



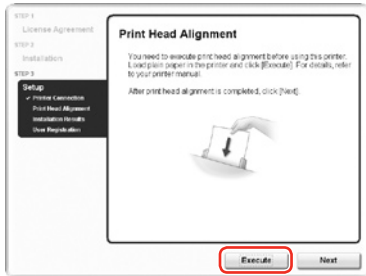
- Note**
- Select **Easy Install** in order to install the printer driver, on-screen manuals, and application software. Select **Custom Install** in order to choose the options you would like to install.
 - To install PhotoRecord and Adobe® RGB (1998), click **Custom Install** and follow the on-screen instructions. If you are using Windows Me/98, Adobe RGB cannot be installed.

- 5 When the list of applications to install appears, confirm the contents, click **Install**.
- Note**
Move the cursor over items to display explanations of each application below.
- 6 Read the License Agreement carefully and click **Yes**. Follow the on-screen instructions to install the software. If a message asking for your confirmation to restart your computer appears, click **OK**.

- 7 When the **Printer Connection** screen appears, make sure that the printer is connected to the computer with a **USB** cable, then **TURN THE PRINTER ON**. The software will begin identifying the printer port being used.
- Important**
If you cannot go to the next procedure after 2 minutes, refer to “Troubleshooting” instructions in the *User’s Guide on-screen manual*.

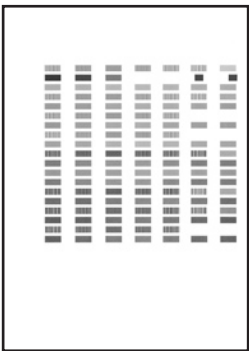


- 8 When the **Print Head Alignment** screen appears, ensure that a sheet of letter- or A4-size blank paper is loaded in the Auto Sheet Feeder (top paper feeder). Click **Execute**, read the message and click **Print Head Alignment**.



- Note**
- Print head alignment will take about 6 minutes to complete. Do not start another operation here.
 - Do not open the Top Cover while printing.

- 9 Print head alignment is automatically adjusted by printing the pattern below.



- Note**
- The pattern is printed in black and blue.
 - When Automatic Print Head Alignment cannot be executed properly, the **ALARM** lamp on the printer will flash orange eleven times. Refer to “ALARM Lamp Flashes Orange” in “Troubleshooting” of the *User’s Guide*.

- 10 After print head alignment is completed, click **Next**.
- 11 When the **Installation Results** screen appears, click **Next**.
- 12 Follow the on-screen instructions to register your product.
- Note**
When the **User Registration** screen appears, follow on-screen instructions to register your product. You will need your product serial number, which is located on the inside of the printer. See Step 1- 6 on the front page.
- 13 When the **Installation completed successfully** screen appears, click **Exit**.
- If **Restart** is displayed, make sure that the **Restart the system now (recommended)** check box is selected, then click **Restart**.

Software installation and print head alignment is now complete.

Macintosh® Printer Driver Installation and Print Head Alignment



- Important**
Since **Mac® OS 9**, **Mac OS X Classic environments**, or **Mac OS X v.10.2.7 or earlier** are not supported, do not connect the printer to these.

- Note**
- Use Mac OS X v.10.2.8 to 10.4.x.
 - The screens below refer to Mac OS X v.10.4.x installation. Screens may vary depending on the operating system you are using.
 - Log on as an Administrator before continuing.
 - Before installing the driver, disable all anti-virus programs and automatically loading programs.

- 1 Turn on your Mac and your printer and insert the Setup CD-ROM.
- Note**
If the **CD-ROM** folder does not open automatically, double-click the **CD-ROM** icon on the desktop.

- 2 Double-click the **Setup** icon.

- 3 When the **Authenticate** screen appears, enter your administrator name and password. Click **OK**. If you do not know your administrator name or password, click **?**, then follow the on-screen instructions.

- 4 When the main menu appears, click **Easy Install**.



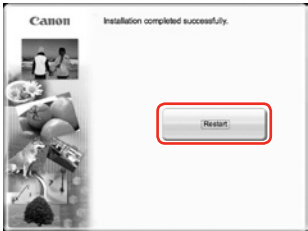
- Note**
Select **Easy Install** in order to install the printer driver, on-screen manuals, and application software. Select **Custom Install** in order to choose the options you would like to install.

- 5 When the list of applications to install appears, confirm the contents, then click **Install**.
- Note**
Move the cursor over items to display explanations of each application below.
- 6 Read the License Agreement carefully and click **Yes**. Follow the on-screen instructions to install the software.

- 7 When the **Print Head Alignment Recommended** screen appears, click **Next**.

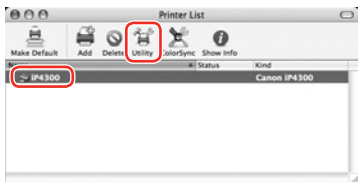
- 8 Follow the on-screen instructions to register your product.
- Note**
When the **User Registration** screen appears, follow on-screen instructions to register your product. You will need your product serial number, which is located on the inside of the printer. See Step 1- 6 on the front page.

- 9 When the **Installation completed successfully** screen appears, click **Restart**.



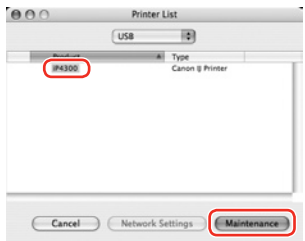
The system is restarted automatically.

- 10 Start the print head alignment procedure.
- a. After restarting the computer, select **Applications** from the **Go** menu. Double-click the **Utilities** folder, then the **Printer Setup Utility (Print Center)** when using Mac OS X v.10.2.8) icon.
- b. When the **Printer List** screen appears, select **iP4300**, then click **Utility (Configure)** when using Mac OS X v.10.2.8) icon.

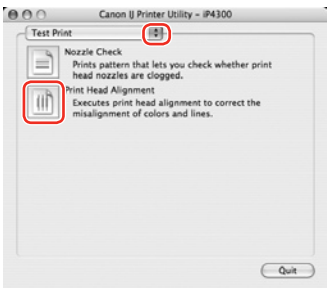


If the printer is not displayed on the **Printer List**, click **Add** to add the printer. For details, follow the instructions in **Mac Help**.

- c. Select **iP4300** and click **Maintenance**.

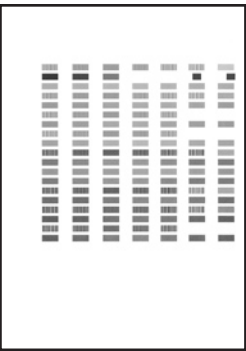


- d. Ensure that a sheet of letter- or A4-size blank paper is loaded in the Auto Sheet Feeder (top paper feeder).
- e. Click the down-arrow to select **Test Print**. Click the **Print Head Alignment** icon and follow the on-screen instructions.



- Note**
- Print head alignment will take about 6 minutes to complete. Do not start another operation here.
 - Do not open the Top Cover while printing.

- 11 Print head alignment is automatically adjusted by printing the pattern below.



- Note**
- The pattern is printed in black and blue.
 - When Automatic Print Head Alignment cannot be executed properly, the **ALARM** lamp on the printer will flash orange eleven times. Refer to “ALARM Lamp Flashes Orange” in “Troubleshooting” of the *User’s Guide*.

- 12 Click **Quit** to exit the Canon IJ Printer Utility.

Software installation and print head alignment is now complete.