



## Unpack the Printer

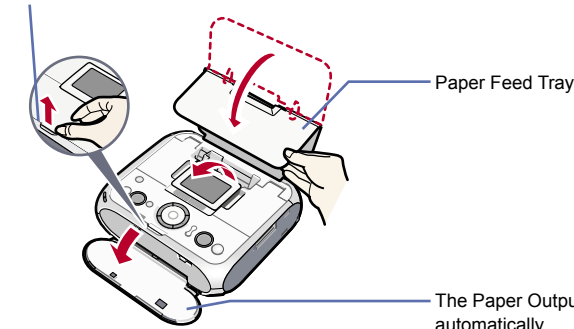
- Please confirm bundled thing by the illustration printed on the flapped lid of the packing box.
- A USB cable is necessary to connect the printer with your computer.

QT5-0755-V01

## 1 Prepare the printer

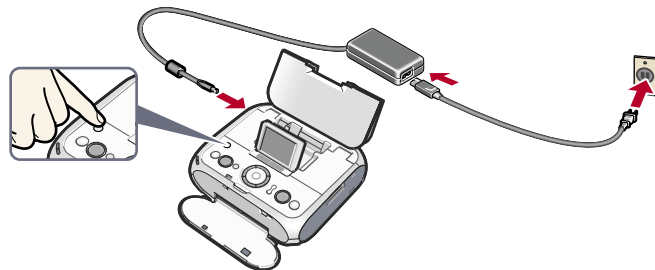
- Place the printer on a flat and horizontal surface, and do not place any objects in front of the printer. Open the Paper Feed Tray and fold it in half.

Place finger here to open the Paper Feed Tray and fold it in half.



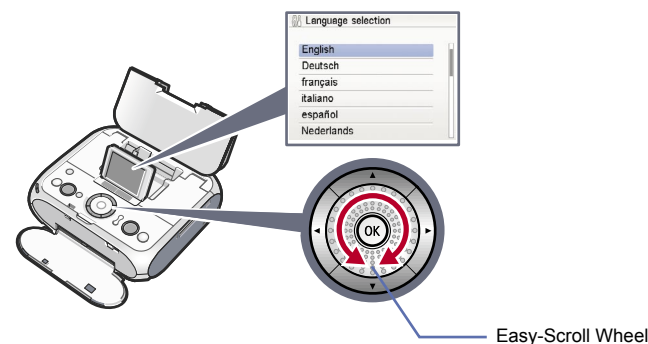
**Caution**  
Before turning on the printer, remove all of the shipping tapes.

- Connect the power cord to the AC Adapter, and then plug the AC Adapter into the printer. Connect the other end of the power cord to a power outlet and then press the **ON/OFF** button.



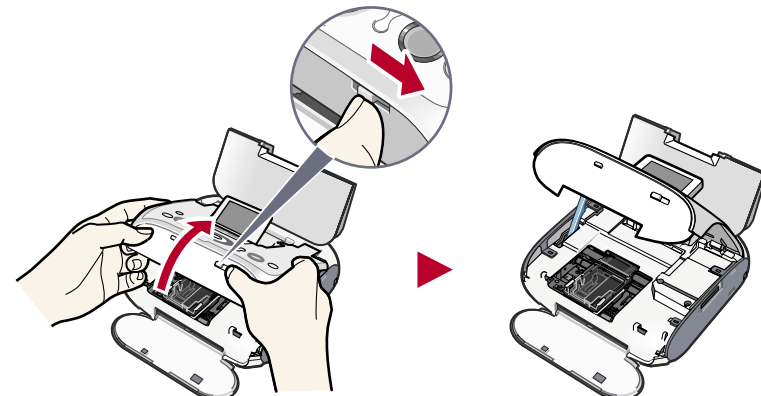
**Important**  
If the Alarm lamp is lit orange and an error message is displayed, see "Error Message Is Displayed on the LCD" in the *Photo Printing Guide*.

- Use the **▲** or **▼** button or the Easy-Scroll Wheel on the Operation Panel to select the language for the LCD, then press the **OK** button.



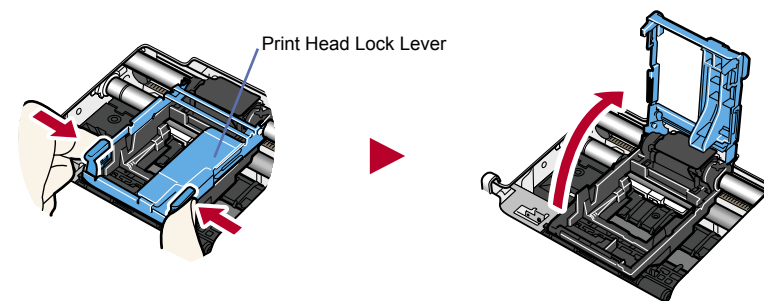
**Important**  
If you selected the wrong language by mistake, press the **Back** button to select again.

- Slide the Lock Switch to the right, and then lift the Printer Cover. The cover will be locked if it is fully lifted.

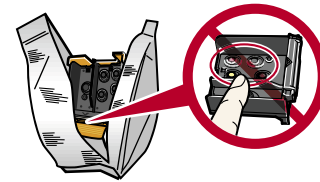


## 2 Install the Print Head

- Unlock the Print Head Lock Lever by gently squeezing the tabs on both ends inward, and then raise the Print Head Lock Lever until it stops.

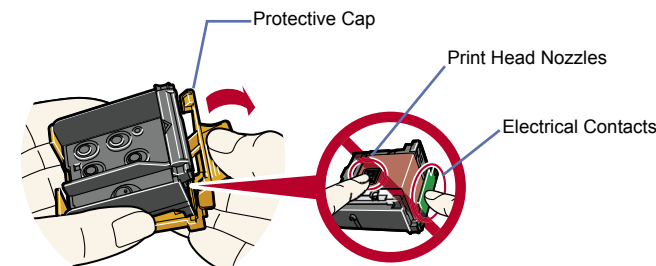


- Remove the Print Head from its package.



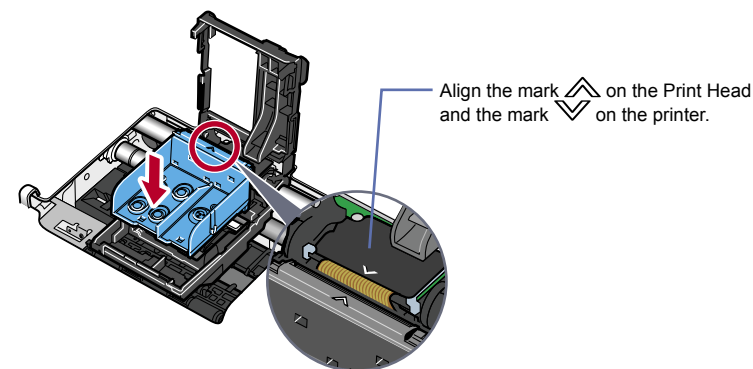
**Important**  
There might be some transparent or light blue ink on the inside of the bag the Print Head comes in - this has no effect on print quality. Be careful not to get ink on yourself when handling these items.

- Remove the orange protective cap from the Print Head and discard it.

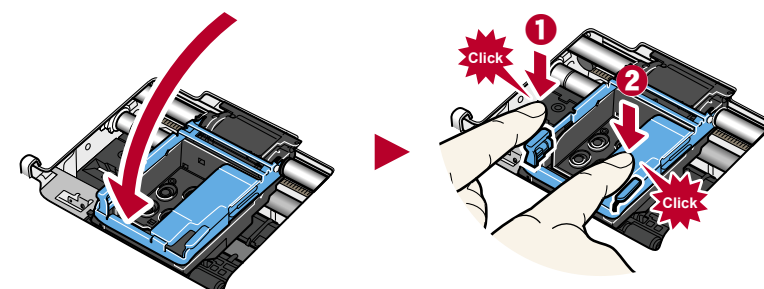


**Important**  
Do not touch the Print Head nozzles and the electrical contacts.

- Insert the Print Head.



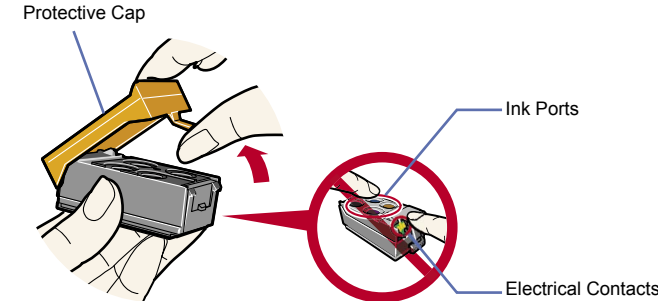
- Lower the Print Head Lock Lever carefully by pressing down the tabs on both ends until it clicks into place.



**Important**  
Be sure to Lock the Print Head Lever until it "clicks" into place.

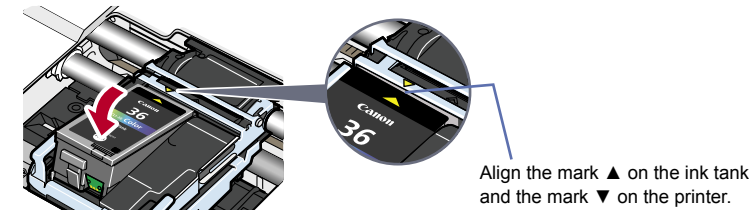
## 3 Install the ink tank

- Remove the orange protective cap and discard it.

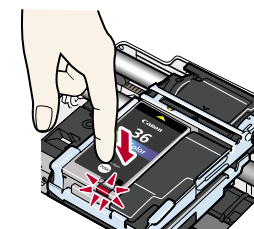


**Important**  
Do not touch the electrical contacts and the ink ports.

- Insert the ink tank at a slant.

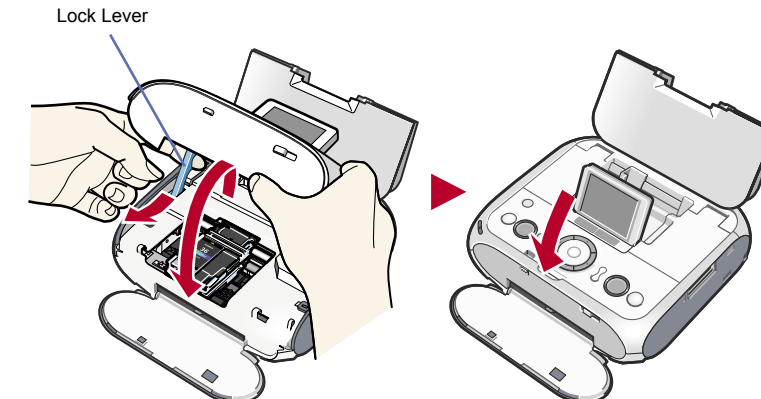


- Press the **OK** mark on the ink tank until it clicks into place and then its lamp lights red.



**Important**  
If the lamp does not light red after it is inserted, repeat steps 2 and 3.

- Open the Printer Cover slightly, pull the Lock Lever to unlock, and then close the Printer Cover.

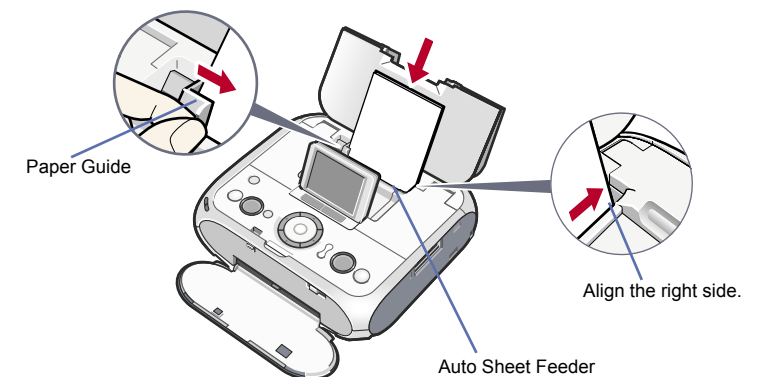


**Important**  
Once you have installed the ink tank, wait for about 90 seconds until the printer has stopped making operating noises, before proceeding.

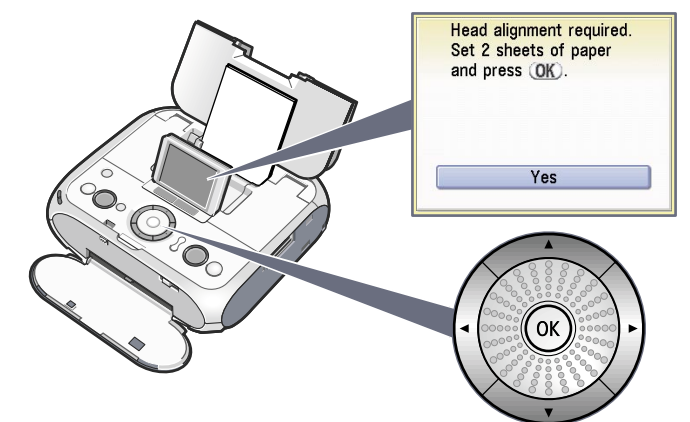
**Note**  
An error message will be displayed on the LCD if the lock lever is not set properly or the ink tank is not installed properly. Open the Printer Cover and make sure that the lock lever is set properly or ink tank is installed properly.

## 4 Align the Print Head

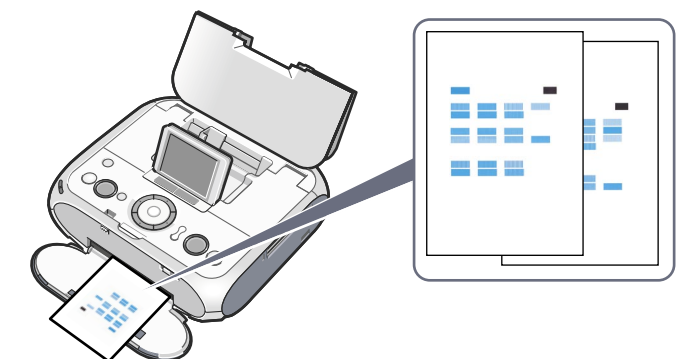
- Load two sheets of the supplied 4" x 6" paper into the Auto Sheet Feeder with the whiter side facing front. Align the paper with the right side of the Auto Sheet Feeder, then slide the Paper Guide toward the left edge of the paper.



- When the message requesting head alignment is displayed on the LCD, press the **OK** button.



The pattern is printed and the Print Head is aligned automatically.



**Note**

- The pattern is printed in black and blue.
- Print Head alignment will take about 3 minutes to complete. Do not start another operation here.
- If the Auto Head alignment cannot be executed correctly and a message is displayed on the LCD, please refer to "Error Message Is Displayed on the LCD" in the *Photo Printing Guide*.

Hardware setup and Print Head alignment is complete.

If you are connecting the printer to a computer, please see the back side of this sheet for Software Installation Instructions.





Windows® Printer Drivers Installation



- Note**
- A printer cable is not included. You must purchase a USB cable (less than 10 ft./3 m) to connect your printer to a computer.
  - The screens below refer to Windows XP Service Pack 2 installation. Screens may differ depending on the operating system you are using.
  - Log on as a member of the Administrators group before continuing.
  - Before installing the printer driver, disable all anti-virus programs and automatically loading programs.

- 1** Turn **OFF** the printer.
- (1) Press the **ON/OFF** button.
- (2) Be sure the LCD and all the lamps on the Operation Panel are off.

- 2** Turn the computer on and start Windows.
- Important**  
If you see the Found New Hardware Wizard, turn off the printer. Remove the USB cable connected to your computer. Next, click Cancel. Then proceed from step 3 to install the printer driver.



- 3** Insert the Setup CD-ROM. The setup program should run automatically.
- Note**  
The setup program should run automatically. If the installer in the CD-ROM does not run automatically, click **Start** and select **My Computer**, then double-click the CD-ROM icon.

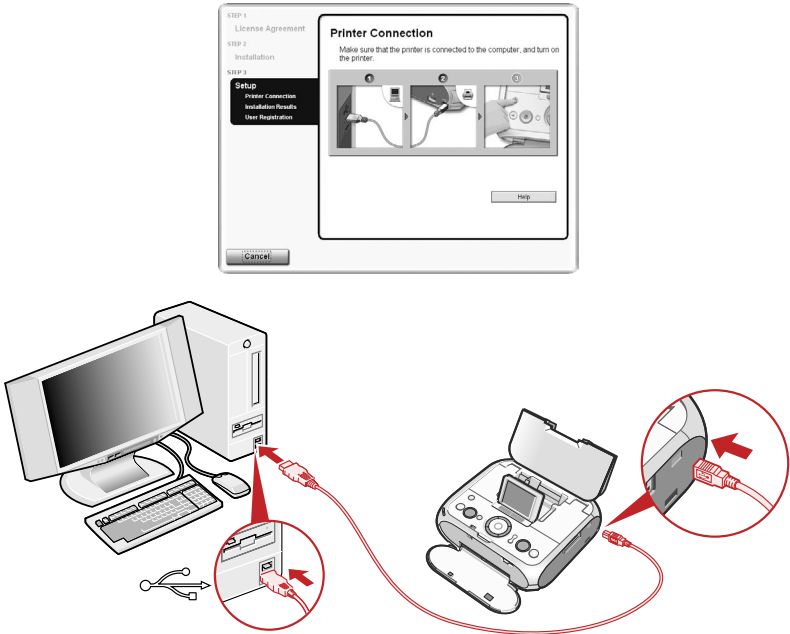
- 4** When the main menu appears, click **Easy Install** and follow the on-screen instructions.



- Note**
- Select **Easy Install** in order to install the printer driver, on-screen manuals, and application software. Select **Custom Install** in order to choose the options you would like to install.
  - To install Adobe® RGB (1998), click **Custom Install**.

- 5** When the list of applications to install appears, verify the contents, click **Install**, then follow the instructions on the screen.
- Note**  
Move the cursor over items to display explanations of each application below.

- 6** Read the **License Agreement** and click **Yes**. Follow the on-screen instructions to install the software. If a message asking for your confirmation to restart your computer appears, click **OK**.
- 7** When the **Printer Connection** screen appears, ensure that the printer is connected to the computer with the USB cable, then turn the printer on. The software will begin identifying the printer port being used.
- Important**  
If you cannot proceed to the next procedure after three minutes, refer to "Troubleshooting" instructions in the *Photo Printing Guide*.



- 8** Follow the on-screen instructions to register your product.
- Note**  
When the Registration Screen appears, follow the on-screen instructions to register your product. You will need your product serial number, which is located on the bottom face of the printer.

- 9** When the Installation completed successfully window appears, click **Exit**.



If Restart is displayed, click **Restart** to restart the system.

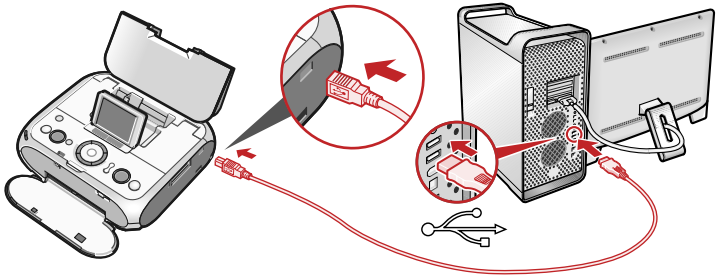
**Now you have completed installation of the software.**

Macintosh® Printer Drivers Installation



- Note**
- A printer cable is not included. You must purchase a USB cable (less than 10 ft./3 m) to connect your printer to a computer.
  - Use Mac® OS X v.10.2.8 to 10.4.x.
  - The screens below refer to Mac OS X v.10.4.x installation. Screens may differ depending on the operating system you are using.
  - Log on as a Administrator before continuing.
  - Before installing the printer driver, disable all anti-virus programs and automatically loading programs.
  - Since Mac OS X Classic environments is not supported, do not connect the printer.

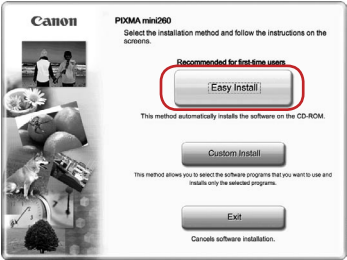
- 1** Connect the end of the USB cable to the computer, the other to the printer.
- Note**  
Make sure the printer is turned on.



- 2** Turn on your Mac.
- 3** Insert the Setup CD-ROM.
- Note**  
If the **CD-ROM** folder does not open automatically, double-click the **CD-ROM** icon on the desktop.
- 4** Double-click the **Setup** icon.
- 5** When the **Authenticate** screen appears, enter your administrator name and password. Click **OK**. If you do not know your administrator name or password, click **?**, then follow the on-screen instructions.

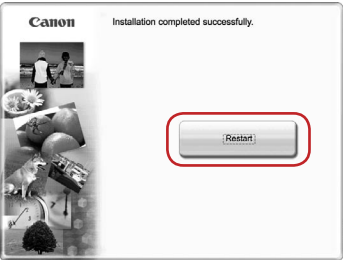


- 6** When the main menu appears, click **Easy Install** and follow the on-screen instructions.



- Note**  
Select **Easy Install** in order to install the printer drivers, on-screen manuals, and application software. Select **Custom Install** in order to choose the options you would like to install.

- 7** When the list of applications to install appears, verify the contents, click **Install**, then follow the instructions on the screen.
- Note**  
Move the cursor over items to display explanations of each application below.
- 8** Read the **License Agreement**, then click **Yes**. Follow the on-screen instructions to install the software.
- 9** Follow the on-screen instructions to register your product.
- Note**  
When the Registration Screen appears, follow the on-screen instructions to register your product. You will need your product serial number, which is located on the bottom face of the printer.
- 10** When the **Installation completed successfully** screen appears, click **Restart**.



The system is restarted automatically.

**\*When connecting from Mac OS X v.10.3.3 or earlier:**  
Restarting the computer while connected to the printer may cause the not to be detected. To resolve this, either unplug the USB cable then plug it back in again, or turn the printer OFF then back ON again.

- 11** After restarting the computer, start Printer Setup Utility (start Print Center when you use Mac OS X v.10.2.8) and then check that the printer name you want to use is shown in **Printer List**. If the printer name is not displayed, press the **Add** button to add the printer. For more detailed instructions, refer to the Mac on-screen Help.

**Now you have completed installation of the software.**