

# Software Starter Guide

••• Canon Digital Camera Solution Disk •••



**Install the bundled software programs,  
and download images to the computer.**

- This guide explains how to install the software programs and briefly introduces their functions and operating procedures.

• You may download images without installing this software. However, there are several limitations (p. 77).

ENGLISH



## SAFETY PRECAUTIONS

The precautions noted within this guide are intended to instruct you in the safe and correct use of the products and to prevent injuries to yourself or other persons, or damage to property. Please read and ensure that you understand them before proceeding to other sections of the guide.

**⚠ Warnings** This symbol indicates topics that could lead to death or serious injury if ignored or handled incorrectly.

### ⚠ Warnings

- Do not play the supplied CD-ROM(s) in any CD player that does not support data CD-ROMs. Playing the CD-ROM(s) in an audio CD player (music player) could damage the speakers. It is also possible to suffer hearing loss from listening with headphones to the loud sounds of a CD-ROM played on a music CD player.

### Disclaimer

- While every effort has been made to ensure that the information contained in this guide is accurate and complete, no liability can be accepted for any errors or omissions. Canon reserves the right to change the specifications of the hardware and software described herein at any time without prior notice.
- No part of this guide may be reproduced, transmitted, transcribed, stored in a retrieval system, or translated into any language in any form, by any means, without the prior written permission of Canon.
- Canon makes no warranties for damages resulting from corrupted or lost data due to a mistaken operation or malfunction of the camera, the software, the memory cards, personal computers, peripheral devices, or use of non-Canon memory cards.

## Canon Customer Support

For Canon Customer Support contacts, please see the customer support list supplied with your camera.

# Table of contents

|   |           |
|---|-----------|
| <b>Read This First</b>  | <b>3</b>  |
| Precautions .....   | 3         |
| It's so Simple! Make Prints Right at Home Like a Pro .....    | 4         |
| Unbounded Possibilities with Entertaining Software .....      | 5         |
| System Requirements .....                                     | 9         |
| <b>Using the Software on the Windows Platform</b>             |           |
| <b>– Preparations</b>   | <b>11</b> |
| Installing the Software .....                                 | 11        |
| <b>Using the Software on the Windows Platform</b>             |           |
| <b>– The Basics</b>   | <b>15</b> |
| Downloading Images to the Computer .....                      | 15        |
| Printing Images .....   | 20        |
| <b>Using the Software on the Windows Platform</b>             |           |
| <b>– Advanced Techniques</b>                                  | <b>22</b> |
| The ZoomBrowser EX Windows .....                              | 22        |
| ZoomBrowser EX Features .....                                 | 28        |
| Operating the Shutter Remotely (Remote Shooting) .....        | 32        |
| Merging Panoramic Images – PhotoStitch .....                  | 35        |
| Processing RAW Images .....                                   | 36        |
| Enjoy Customizing Your Camera with the My Camera Settings ... | 39        |
| <b>Using the Software on the Macintosh Platform</b>           |           |
| <b>– Preparations</b>   | <b>43</b> |
| Installing the Software .....                                 | 43        |
| <b>Using the Software on the Macintosh Platform</b>           |           |
| <b>– The Basics</b>   | <b>45</b> |
| Downloading Images to the Computer .....                      | 45        |
| Printing Images .....   | 49        |

|   |           |
|---|-----------|
| <b>Using the Software on the Macintosh Platform<br/>– Advanced Techniques</b> | <b>51</b> |
| The ImageBrowser Windows .....  | 51        |
| ImageBrowser Features .....   | 57        |
| Operating the Shutter Remotely (Remote Shooting) .....                        | 61        |
| Merging Panoramic Images – PhotoStitch .....                                  | 64        |
| Processing RAW Images .....   | 65        |
| Enjoy Customizing Your Camera with the My Camera Settings ...                 | 68        |
| <b>Appendices</b>   | <b>71</b> |
| Uninstalling the Software .....   | 71        |
| Memory Card Folder Structure .....  | 72        |
| Troubleshooting .....   | 73        |
| Downloading Images without Installing the Software .....                      | 77        |
| Index .....   | 78        |

### Using the PDF Manuals

The following PDF manuals are provided to explain the features and procedures for using ZoomBrowser EX and ImageBrowser.

- ZoomBrowser EX Software User Guide (Windows)
- ImageBrowser Software User Guide (Macintosh)



Adobe Reader must be installed to read the aforementioned manuals.

These manuals are available on the Canon website.  
Use your browser program to download these manuals from the following URL:  
<http://web.canon.jp/imaging/information-e.html>

# Read This First

This chapter explains what you can accomplish using the camera with the software contained on the Canon Digital Camera Solution Disk. It also lists the computer system configurations required to use the software.

## About this Guide

- The explanations in this guide are based on Windows XP and Mac OS X v10.4. If you are using another version of these operating systems, the actual screen contents and procedures may vary slightly from those shown.
- The following terms are used in this guide.  
Mac OS X is used for Mac OS X (v10.4-v10.5)

## Precautions



Install the software from the supplied Canon Digital Camera Solution Disk before you connect the camera to the computer.

### Precautions for Connecting the Camera to the Computer

- The connection may not operate correctly if you attach the camera to the computer with an interface cable via a USB hub.
- The connection may not operate correctly if you are using other USB devices, excluding USB mice or keyboards, at the same time as the camera. If this occurs, disconnect the other devices from the computer and try reconnecting the camera.
- Do not connect two or more cameras at the same time to the same computer. The connections may not operate correctly.
- Never allow the computer to go into standby (sleep) mode while a camera is connected via the USB interface cable. If it does happen, never disconnect the interface cable. Try to awaken the computer with the camera in the connected state. Some computers will not awaken properly if you disconnect the camera while they are in standby (sleep) mode. Please refer to your computer manual for instructions regarding the standby (sleep) mode.



- You are recommended to use an AC adapter (sold separately) when connecting to a computer. Ensure that you use fully charged batteries if you cannot use an AC adapter.
- See the *Camera User Guide* for procedures connecting the camera to the computer.

# It's so Simple! Make Prints Right at Home Like a Pro

## Shoot the images



See your *Camera User Guide* for shooting instructions.

## Install the software on the computer



Just install the software once at the beginning.

Windows (p. 11)  
Macintosh (p. 43)

## Connect the camera to the computer



See your *Camera User Guide* for connecting instructions.

Precautions for Connecting the Camera to the Computer (p. 3)

## Download images to the computer



Windows (p. 15)  
Macintosh (p. 45)

## Print the images



Windows (p. 20)  
Macintosh (p. 49)

# Unbounded Possibilities with Entertaining Software

## ZoomBrowser EX (Windows)/ImageBrowser (Macintosh)

Versatile image management software for downloading images, editing still images and movies, and printing.

### Experiment with diverse printing techniques

Print a variety of layouts. Change paper sizes and print your photos with date stamps and comments to enjoy an expanded range of possibilities.

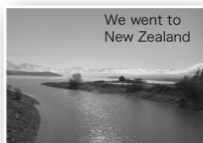
Windows (p. 20) Macintosh (p. 49)



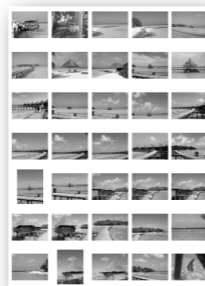
Printing images is easy

Print date stamps with your photos

2.2.2008



Print comments on your postcards and invitations



Check multiple photos at a glance with index printing.

### Edit a Movie

You can remove unwanted sections at the beginning or end of a movie. You can also use the memory card reader to upload the edited movie to the camera.

Windows (p. 26) Macintosh (p. 55)

### Extract Stills from Movies

You can extract a still from the displayed movie and save it as a new image file.

Windows (p. 26) Macintosh (p. 55)

## Operate the Camera Shutter from the Computer (Remote Shooting)

Shoot and control the camera's shutter from a computer. You can save the recorded images directly to the computer. (Certain models only)

Windows (p. 32) Macintosh (p. 61)



## Enjoy Customizing Your Camera (My Camera)

Set your favorite images and sounds as the camera's start-up image or shutter sound. (Certain models only)

Windows (p. 39) Macintosh (p. 68)



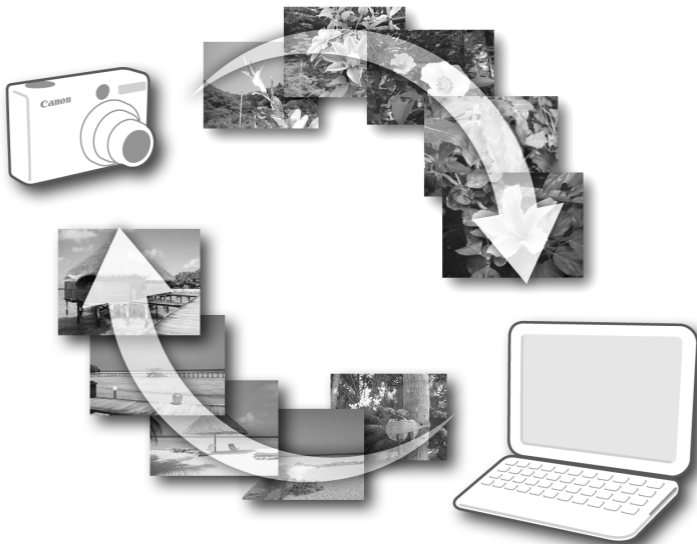
## PhotoStitch (Windows/Macintosh)

A program for merging multiple images into dramatic panoramas.

### Stitch a Panorama Together

Windows (p. 35)    Macintosh (p. 64)





# System Requirements

Please install the software on a computer meeting the following minimum requirements. Even though these are recommended system requirements, not all computer functions can be guaranteed.

## Windows

|                             |                     |   |  |
|-----------------------------|---------------------|---|--|
| <b>OS</b>                   |                     | Windows Vista (including Service Pack 1)<br>Windows XP Service Pack 2   |  |
| <b>Computer Model</b>       |                     | The above OS should be pre-installed on computers with built-in USB ports.  |  |
| <b>CPU</b>                  | <b>Still Images</b> | Windows Vista:<br>Windows XP:   | Pentium 1.3 GHz or higher<br>Pentium 500 MHz or higher |
|                             | <b>Movies</b>       | Core 2 Duo 2.6 GHz or higher  |  |
| <b>RAM</b>                  | <b>Still Images</b> | Windows Vista:<br>Windows XP:   | 512 MB or more<br>256 MB or more                       |
|                             | <b>Movies</b>       | 2 GB or more  |  |
| <b>Interface</b>            |                     | USB   |  |
| <b>Free Hard Disk Space</b> |                     | <ul style="list-style-type: none"> <li>• Canon Utilities</li> <li>- ZoomBrowser EX: 200 MB or more</li> <li>- PhotoStitch: 40 MB or more</li> <li>- Digital Photo Professional: 200 MB or more (certain models only)</li> </ul> |  |
| <b>Display</b>              |                     | 1,024 x 768 pixels/High Color (16 bit) or better  |  |

## Macintosh

|                             |                     |   |                                  |
|-----------------------------|---------------------|---|----------------------------------|
| <b>OS</b>                   |                     | Mac OS X (v10.4-v10.5)  |                                  |
| <b>Computer Model</b>       |                     | The above OS should be pre-installed on computers with built-in USB ports.  |                                  |
| <b>CPU</b>                  | <b>Still Images</b> | PowerPC G4/G5 or Intel Processor  |                                  |
|                             | <b>Movies</b>       | Core 2 Duo 2.6 GHz or higher  |                                  |
| <b>RAM</b>                  | <b>Still Images</b> | Mac OS X v10.5:<br>Mac OS X v10.4:  | 512 MB or more<br>256 MB or more |
|                             | <b>Movies</b>       | 2 GB or more  |                                  |
| <b>Interface</b>            |                     | USB   |                                  |
| <b>Free Hard Disk Space</b> |                     | <ul style="list-style-type: none"> <li>• Canon Utilities</li> <li>- ImageBrowser: 300 MB or more</li> <li>- PhotoStitch: 50 MB or more</li> <li>- Digital Photo Professional: 200 MB or more (certain models only)</li> </ul> |                                  |
| <b>Display</b>              |                     | 1,024 x 768 pixels/32,000 Colors or better  |                                  |

If you will be using Digital Photo Professional, check the "Processing Raw Images" section also (Windows, p. 36; Macintosh, p. 65) (certain models only).



- Even if there is nothing wrong with a movie file, it may drop frames while playing, not play smoothly, or the audio may cut out depending on your computer specifications.
- A CD-ROM drive is required to install the software.
- A sound card is required to play movie file audio tracks in Windows.
- With Windows, Microsoft .NET Framework 2.0 or later is required.
- Macintosh software can only be used on disks formatted in the Mac OS Extended (journaled) format.

### Previous ZoomBrowser EX/ImageBrowser Versions

- If you are already using a prior version, use the supplied CD-ROM (Canon Digital Camera Solution Disk) to install and overwrite it with the new version.
- If you were using ZoomBrowser EX Ver. 2 or 3, perform the following procedures after installing the software.
  1. Double-click [dbconverter.exe] to start it.  
Example: C:\Program Files\Canon\ZoomBrowser EX\Program Folder\dbconverter.exe
  2. Select the database file used up to now and click the [Start] button.  
Example: C:\Program Files\Canon\ZoomBrowser EX\Database\My Database.zbdIf images were saved in the Program Files folder, then continue with the following procedure.
- 3. Copy the image folders in the Program Files folder to the [My Pictures] folder.  
Example: C:\Program Files\Canon\ZoomBrowser EX\Library (1)

# Using the Software on the Windows Platform – Preparations

This chapter explains how to install the software. Read this before connecting the camera to the computer for the first time.

## Installing the Software

Start by installing the software from the Canon Digital Camera Solution Disk.



- Install the software before you connect the camera to the computer.
- You must have authorization as a Computer System Administrator to install programs.

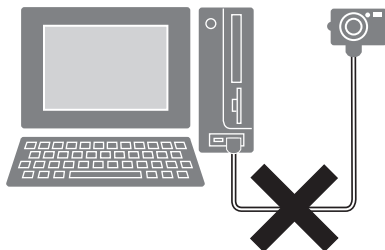
### Items to Prepare

- Your camera and computer
- Canon Digital Camera Solution Disk
- Interface cable supplied with the camera

### Installation Procedures

- 1** Confirm that the camera is **NOT** connected to the computer.

If it is, disconnect the cable. The software cannot be properly installed if the camera is connected to the computer at the start.

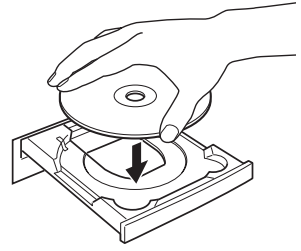


- 2** Close any programs that are running.

**3** Place the Canon Digital Camera Solution Disk in the computer's CD-ROM drive.


If the [User Account Control] window appears, follow the on-screen instructions to proceed.

If the installer panel does not appear automatically, use the following procedures.



**How to Display the Installer Panel**

Use the following procedures to display the installer panel if it does not appear automatically.

1. Select [Computer] or [My Computer] from the [Start] menu.
2. Right-click the CD-ROM icon and select [Open].
3. Double-click the [SETUP.EXE]\*  icon.
4. When [User Account Control] window displays, follow the on-screen instructions to proceed.

\* Some computers may not display the [.EXE] file name extension as shown above.

**4** Click the Digital Camera Software [Easy Installation] button.

To individually select the software to install, click [Custom Installation].



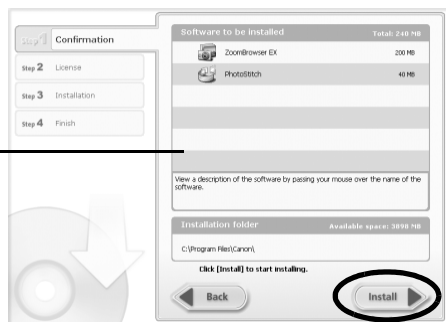
Installer Panel

**5** If other software is running, close each program before clicking [OK].



## 6 Review the installation settings and click [Install].

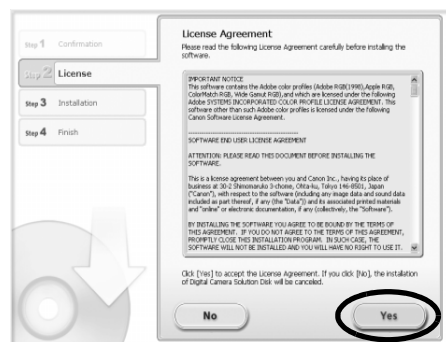
The items in the list may differ from those illustrated depending on the software installed on your computer.



## 7 Click [Yes] if you agree to all of the terms of the software license agreement.

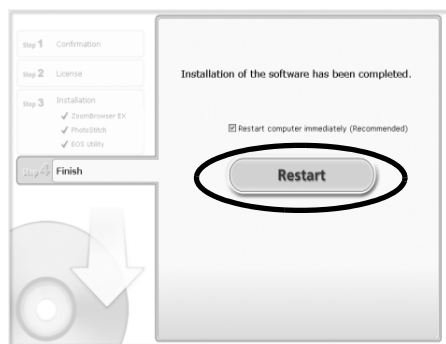
The installation will start.

Follow the on-screen instructions to proceed with the installation. Click [Yes] if a dialog confirming the installation of Microsoft .Net Framework displays.



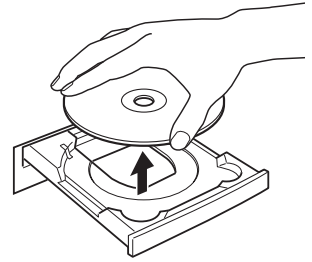
## 8 When the installation is over, select [Restart computer immediately (Recommended)] and click [Restart].

At this stage, do NOT remove the Solution Disk from the CD-ROM drive yet.



If there is no need to restart the computer, the [Finish] screen will display. Click [Finish], remove the Solution Disk from the CD-ROM drive to conclude the installation.

- 9 Remove the disk from the CD-ROM drive when your normal desktop screen appears after restarting. This concludes the software installation.



See *Uninstalling the Software* (p. 71) to delete the installed programs.



To ensure security on computers with Microsoft .NET Framework installed, it will be necessary to update the computer using Windows Update.

You may now download camera images to the computer (p. 15).



# Using the Software on the Windows Platform – The Basics

This chapter explains the procedures for using ZoomBrowser EX to download the camera's images to the computer and print them.

Proceed to this chapter after completing the preparations in the *Using the Software on the Windows Platform – Preparations* section.

## Downloading Images to the Computer

Begin by downloading the images to your computer. The downloading procedure is slightly different depending on whether you are using a camera to computer connection (see below) or a memory card reader (p. 18).



- You may not be able to download images when the camera is connected to a computer if there are a large number of images (approximately 1000) on the memory card. Use a memory card reader to download in that case.
- Movie files take time to download since the files are large.

### Camera to Computer Connection

- 1 After connecting the supplied interface cable to the computer's USB port and the camera's DIGITAL terminal, turn on the camera power, set it to playback mode and prepare it to communicate with the computer.



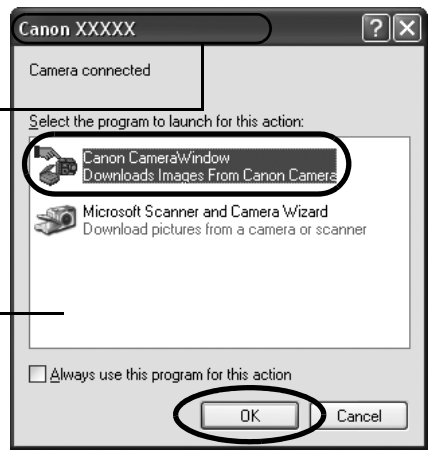
Methods for connecting the camera to the computer and placing the camera in the correct mode for connecting vary between camera models. See the *Camera User Guide*.

**2** Select [Canon CameraWindow] when a dialog (Events dialog) similar to that on the right displays and click [OK].

In Windows Vista, select [Downloads Images From Canon Camera using Canon CameraWindow] from the AutoPlay dialog.

Your camera model name or [Canon Camera] will appear here.

Different programs may display depending on your computer setup.



**!** If this Events dialog does not appear, click the [Start] menu and select [All Programs] or [Programs], followed by [Canon Utilities], [CameraWindow], [CameraWindow] and [CameraWindow].

CameraWindow displays when the camera and computer are set to the mode to communicate. (Images are not downloaded at this point.)

**CameraWindow**



Thumbnail Window


View Window

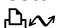
**3** Download the images using the camera or the computer. By default, the downloaded images are saved into the [Pictures] or [My Pictures] folder.


## Using the Camera to Download Images

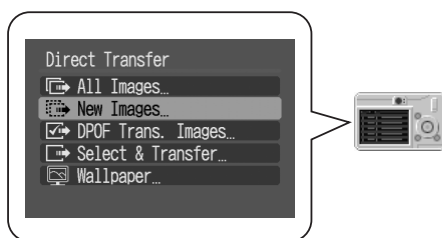
Download images using the camera's Direct Transfer function.



- When it is possible to use the Direct Transfer function, the Direct Transfer settings menu will appear on the LCD monitor and the  (Print/Share) button will light blue.
- See the *Camera User Guide* for instructions regarding Direct Transfer settings and procedures.

Set the Direct Transfer settings on the camera and press the  (Print/Share) button or the FUNC./SET button.

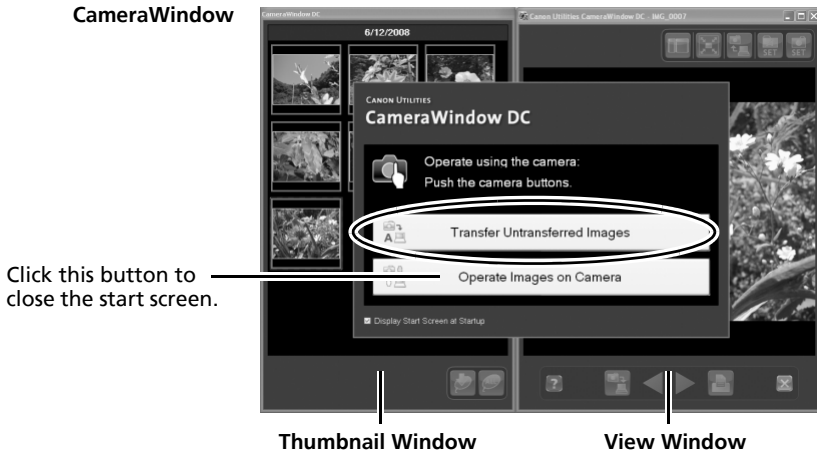
The  (Print/Share) button will blink blue during the transfer and remain lit when it is complete. Click the mouse button or press any key on the keyboard to resume the ability to operate from the computer.




## Using the Computer to Download Images

Click [Transfer Untransferred Images].

### CameraWindow



- To download images that have had transfer settings set with the camera, use the camera or a memory card reader.
- To check images in the camera or to download only a portion of the images, click [Operate Images on Camera].
- You can choose standard or frame-by-frame playback of movies by selecting a movie in the Thumbnail Window.
- You can also click  in the View Window to upload to the camera still images that were downloaded to the computer.

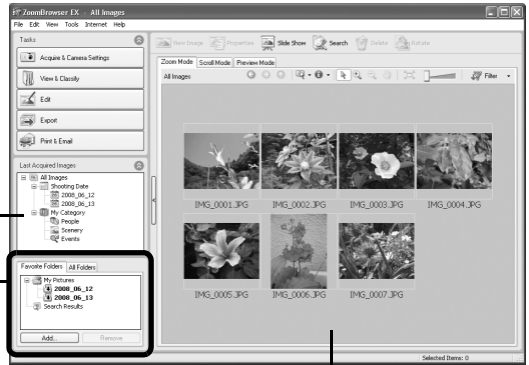
When you click [OK] in the image transfer completion window, the transferred images will display in the Main Window.

The downloaded images are saved into folders according to the shooting date.

The last downloaded images will display here according to both their shooting dates and categories.

**Folders Area**  
The downloaded symbol displays on downloaded folders.

**Thumbnail**

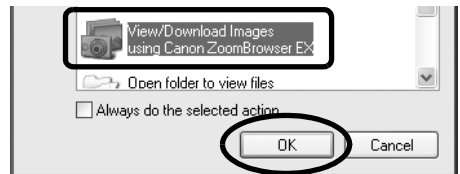


Next, print out the images (p. 20).

## Memory Card Reader Connection

- 1 Insert the memory card into the reader.  
Use a separately sold card adapter if required.  
See the manual for the memory card reader for its connection and handling instructions.

- 2 Select [View/Download Images using Canon ZoomBrowser EX] when the dialog to the right appears and click [OK].



If the dialog above fails to appear, click the [Start] menu and select [All Programs] or [Programs], followed by [Canon Utilities], [ZoomBrowser EX Memory Card Utility], [ZoomBrowser EX Memory Card Utility], and proceed to Step 3.

### 3 Click [Download Images].

You can adjust the settings, such as the type of image downloaded and the destination folder, by clicking [Preferences].



- By default, all the images that have yet to be downloaded will download to the [Pictures] or [My Pictures] folder.
- To download images that have had their transfer settings set with the camera, click [Preferences] and select [Images whose transfer settings were specified with the camera] as the image type to be downloaded.
- Click [Lets you select and download images] to show the memory card images in a list, check the images before downloading and download only selected images.
- See *Memory Card Folder Structure* (p. 72) for information about memory card folder structures and file names.

The downloaded images are saved into folders according to the shooting date.

At the same time they will also appear grouped by date and category in the [Last Acquired Images] section.

Next, print out the images (p. 20).

# Printing Images

There are three methods for using ZoomBrowser EX to print images: [Photo Print], [Index Print] and [Print Using Other Software]. This section explains how to use the [Photo Print] option.

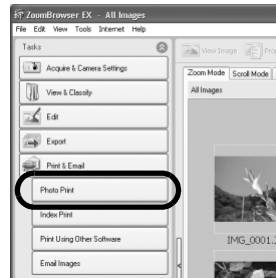
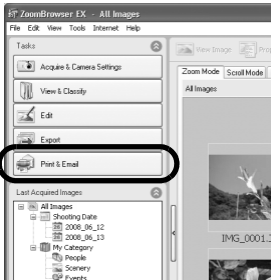


- Movies cannot be printed, but you can print still images saved from movies.
- To use the Index Print option, click [Print & Email] in the Main Window, followed by [Index Print].

## Photo Print

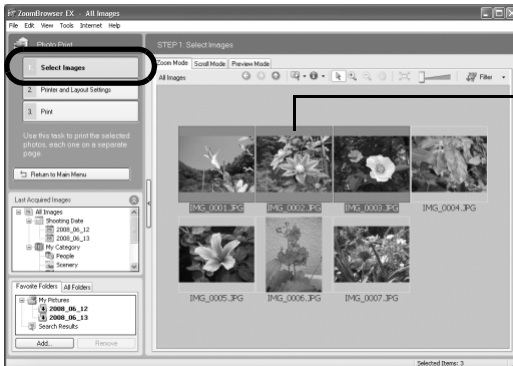
Prints one image on each page.

- 1 Click [Print & Email] in ZoomBrowser EX's Main Window, followed by [Photo Print].



- 2 After confirming that [1. Select Images] is selected, select images.

You can select multiple images by holding the [Ctrl] key down while clicking on successive images.



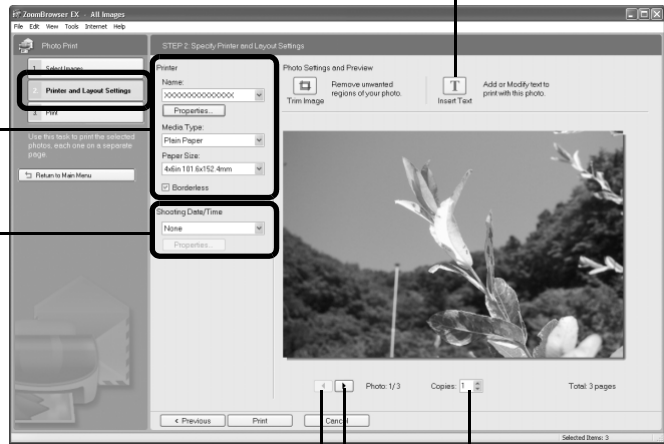
The background of selected images changes to blue.

- 3** Click [2. Printer and Layout Settings] and adjust the categories as you feel necessary.

Text can be inserted here to print with this photo.

Selects the printer and the paper size etc.

Selects a printing method for the shooting date/time information.



Sets the number of print copies.

This button switches between images if multiple images were selected.

- 4** Click [3. Print].  
Printing will start.

This chapter explained the ZoomBrowser EX basics. Once you have mastered them, try the advanced techniques.

- *Using the Software on the Windows Platform — Advanced Techniques* (p. 22).

# Using the Software on the Windows Platform – Advanced Techniques

This chapter explains various ZoomBrowser EX features.

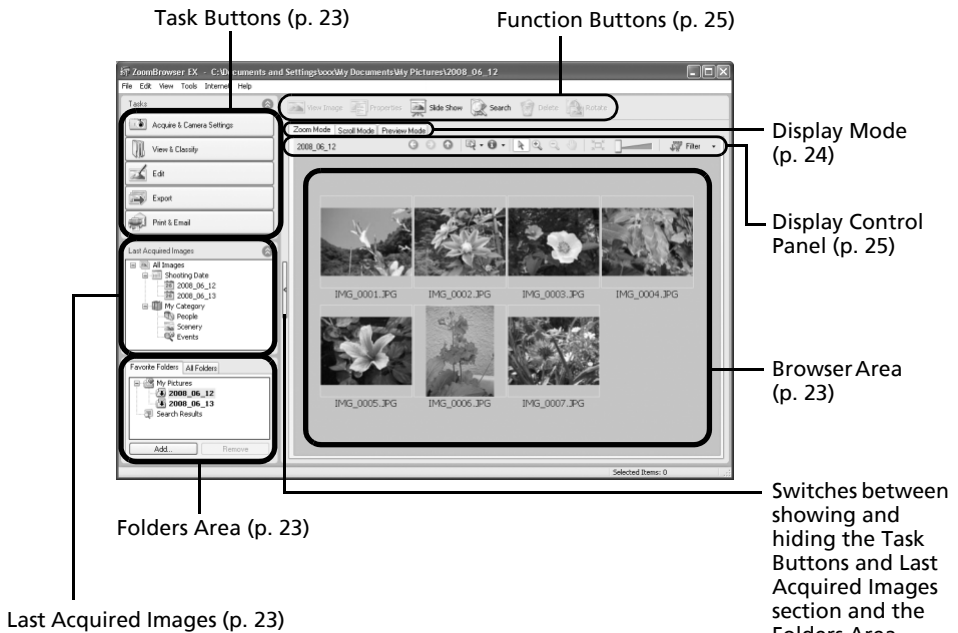
Proceed to this chapter once you have mastered the basic ZoomBrowser EX procedures in the *Using the Software on the Windows Platform – The Basics* chapter.

## The ZoomBrowser EX Windows

This section describes the principal ZoomBrowser EX windows: the Main Window, Viewer Window and Properties Window.

### Main Window

This window is for displaying and organizing images downloaded to the computer.





## Task Buttons

- ZoomBrowser EX's tasks are arranged here like an index.
- Click a Task button to carry out the desired task.  
These features are described in *ZoomBrowser EX Features* (p. 28)

## Folders Area

- Use this area to select folders. The selected folders and the images within the selected folders display in the Browser Area.  
If you select a network drive in advance with Windows Explorer, you can display network folders, but you cannot add, change or delete those folders in the Browser Area.
- If you selected Favorite Folders, only the folders registered in advance as Favorite Folders will display. You are recommended to register a folder that you use frequently as one of the Favorite Folders. If you selected All Folders, all the folders will display.

### Methods for Registering a Favorite Folder

- If [Favorite Folders] is displayed: click [Add] and select a folder.
- If [All Folders] is displayed: select a folder and click [Add to Favorites].
- To delete a folder in the Favorite Folders area, select a folder and click the [Delete] button.

## Last Acquired Images

- You can check images grouped according to the shooting date or My Category.

## Browser Area

- The folders and the images within the folders selected in the Last Acquired Images section or Folders Area display here. The display style will vary according to your Display Mode selection.
- You can sort the image order in the Browser Area by file name, shooting date or other characteristics by selecting [View] and [Sort by].
- The following icons will display around images according to their attributes.



Images shot with the camera's Stitch Assist mode



RAW images



Movies



Images with sound memo attachments



Protected images



Images shot with the camera's AEB function



Rotated Images (In display only)

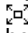
## Display Mode

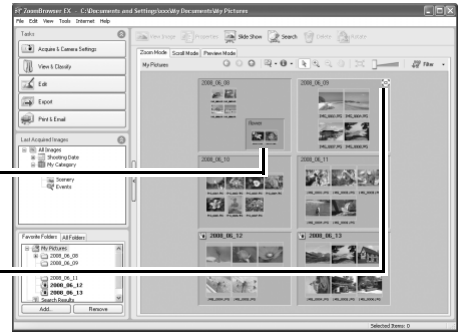
- Selects the display style for the Browser Area.

## Zoom Mode

Displays all the images in a folder as thumbnail images. This mode is convenient for searching for images since many can be displayed at once.

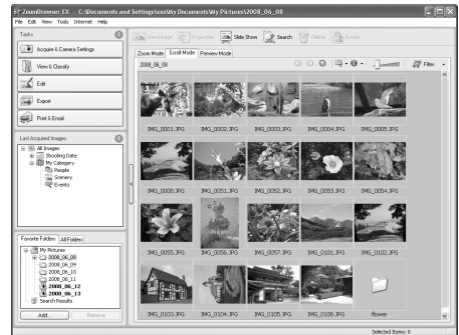
If additional folders are nested within a folder, their images are displayed as thumbnails as well.

If you move the mouse cursor over a folder,  will display on the upper right. Clicking here displays that folder zoomed in.



## Scroll Mode


The images within the selected folder and subfolders will display. If you set the display folder depth (level) to [1] or greater, the thumbnails of the images in the folder will also display. You can change the folder depth in the [Tools] menu under the [Preferences] option.



## Preview Mode

This mode displays the image at a larger size as well as the image information.



In zoom mode or scroll mode, positioning the mouse pointer over a thumbnail causes the image to appear at a higher magnification in a Mouse Over window. You can also set the Mouse Over window to not show in the  (Show Information) menu.

## Display Control Panel

- This panel adjusts the display settings for the Browser Area.

### Selection Menu

Click this to select/deselect all images in the Browser Area.

### Fit to Window

Changes the thumbnail size to fit them into the window.

### Display Size

Changes the size of the thumbnail in the Browser Area.



### Show/Hide Image Information Menu

Select here to show/hide such image information as the file name or shooting date or rating beneath the thumbnail.

### Filter Tool Menu

Displays only images that correspond to the specific conditions.

### Select Button

Use this to select images in Zoom mode.

## Function Buttons

- These buttons are available for executing various functions.

### View Image Button

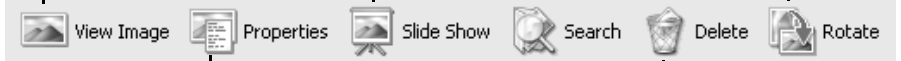
Displays the selected image or movie in the Viewer Window.

### Slide Show Button

Starts a slide show of the selected images.

### Rotate Button

Rotates the selected image.



### Properties Button

Displays information about the selected image in the Properties Window.

### Search Button

Searches for images using such criteria as the Star Rating, modification date, shooting date, comments or keywords.

### Delete Button

Deletes selected images or folders.

## Viewer Window

Double-click an image in the Browser Area to display it in the Viewer Window.

### Edit Menu

You can edit, eliminating red eyes, adjusting colors and brightness, cropping and inputting titles. You can also use it to start up other programs for editing.

### Print Button

Prints the displayed image.

**Shooting Information Display Button**  
Displays image shooting information.

**Synchronize Button**  
Synchronizes the display settings when multiple images are displayed.

### Image Selector Button

Switches between images.

Sets the image display size to the size in the Viewer Window.

Displays images in the Viewer Window at their actual size.

### Zoom

Changes the image zoom setting.

### Star Rating

Sets the Star Rating for an image.

### Full Screen Button

Displays the image in the full screen mode. Click the image or press any key on the keyboard to restore the normal display mode.

**Number of Displays Button**  
Displays multiple images at once. This is handy for comparing images.



### •RAW Image is Displayed

The [Display Original Image] button displays beneath the image. Clicking this button displays the converted image in the Viewer Window.

### •Movie is Displayed

- Buttons will appear beneath the movie, allowing it to be played or the sound to be adjusted.
- You can extract still images from movies by clicking the [Save as still image] button, which appears beside the Star Ratings buttons. You can also delete unwanted sections at the beginning or end of movies by clicking the [Cut Movie] button.

## Properties Window

The Properties Window displays when you select an image in the Browser Area and click the Properties button. The Properties Window does not display in the Preview Mode.

Shows or hides categories.

### File Name

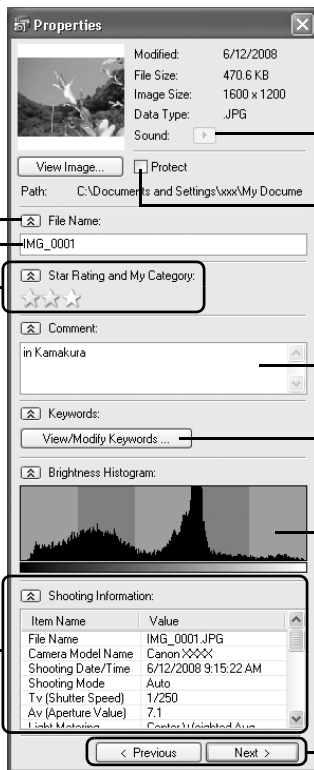
The file name can be changed.

### Star Rating and My Category

Sets the rating for an image. An icon will display if a My Category is set.

### Shooting Information

Displays detailed information, such as the shutter speed and exposure compensation setting. The camera model will determine what information is displayed.



Plays a sound memo attached to an image.

### Protect

Prevents an image from being overwritten or deleted.

### Comment

You can type a comment here.

### Keywords

Sets the keywords used in searches.

### Brightness Histogram

A graph of the highlights and shadows distribution in an image.

### Image Selector Buttons

If multiple images are selected with the Properties Window displayed, you can switch between the images for which the information is displayed.

# ZoomBrowser EX Features

This section briefly introduces the ZoomBrowser EX features.

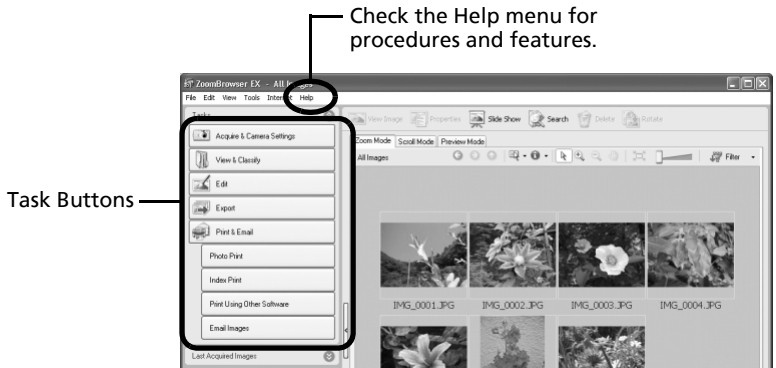


Some ZoomBrowser EX functions may not be available with certain camera models. Check the *Specifications* section of your *Camera User Guide* to see if your model supports them.

## Workflow

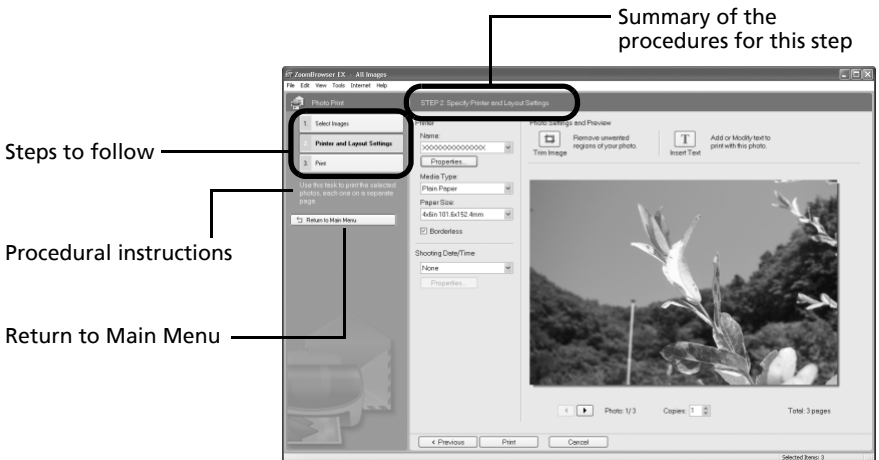
The following workflow is used in ZoomBrowser EX.

- 1 Click a Task button.



The Task buttons are explained in “Task Button Functions” (p. 29).

- 2 Perform the procedures according to the instructions.

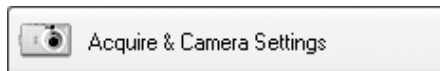


## Task Button Functions

### Acquire & Camera Settings

#### Connect to Camera

You can do the following when you connect the camera and display CameraWindow.



#### Acquire Images

Downloads images and sound files from the camera (p. 15).



#### Print Images

Selects and prints the images in the camera.



#### Write to Camera

Uploads images on the computer to the camera.



#### Set to Camera

Sets the camera owner's name.

### Acquire Images from Memory Card

Downloads images and sound files from a memory card (p. 18).  
You can also select images on the memory card and print them.

### Transfer Images to Memory Card

Uploads images from the computer to a memory card.

### View & Classify

#### View as a Slide Show

Starts a slide show of the images selected in the Browser Area.



#### Rename Multiple Files

Changes the file names of the selected images in a single pass.

#### Classify into Folder

Classifies images and saves them into a specified folder.

#### Search

Performs image searches using criteria such as the Star Rating, modification date, shooting date, comments or keywords. Star Ratings, comments and keywords can be set in the image information column in the Preview Mode or in the Properties Window.

## Edit

### Edit Image

Allows you to perform image editing, such as cropping, image correction, inserting comments, and red-eye correction. You can also use it to start other image editing programs.



### Stitch Photos

Merges multiple images and creates a single large panoramic image (p. 35).

### Digital Photo Professional - Process RAW Images (certain models only)

Converts RAW images into JPEG or TIFF images. You can adjust the image brightness, contrast and color balance among other attributes during conversion (p. 36).

## Export

### Export Still Images

Allows you to change the image size or type, and export it as a new image.



### Export Shooting Properties

Allows you to select the necessary data from the shooting information and export it as a text file.

### Export as a Screen Saver

Exports the image as a screen saver file.

### Export as a Wallpaper

Exports the image as a wallpaper file.

### Backup to CD

Copies images to a CD-R/RW disk for backup.



The Backup to CD function can only be used on computers satisfying the following requirements.

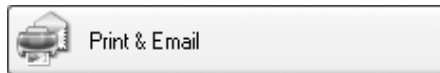
- CD-R/RW capable drive supplied as standard equipment
- CD-R/RW writing capabilities are operating correctly



## Print & Email

### Photo Print

Prints one image per page (p. 20).  
You can print "photos" easily.



### Index Print

Lines up small versions of the images in rows and prints.

### Print Using Other Software

Select the software to use and then print.

### Email Images

Converts the selected images to the appropriate size for transmission by e-mail. You can also use it to automatically start an e-mail program after conversion.

## Other Features

ZoomBrowser EX has the following features as well.

### **[My Camera Settings] (certain models only)**

You can set the camera's settings such as the start-up image or shutter sound (p. 39).

### **[Remote Shooting] (certain models only)**

You can shoot and operate the camera from a computer (p. 32).

# Operating the Shutter Remotely (Remote Shooting)

You can record still images by using a computer to control the shutter of a connected camera. This is particularly useful for checking images on the larger display of the computer as you record them and for high volume photography without worrying about filling the camera's memory card.



- Ensure that you turn off your computer's standby mode before you begin remote shooting. The device performance cannot be guaranteed if the computer enters the standby mode.
- RAW images can not be recorded.

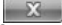



Remote Shooting can only be used with camera models listed as compatible with remote shooting in the *Specifications* section of the *Camera User Guide*.

- 1 Attach the supplied interface cable to the computer's USB port and the camera's DIGITAL terminal and place the camera in the correct mode for connecting.



Methods for connecting the camera to the computer and placing it in the correct mode for connecting vary between camera models. Please refer to the *Camera User Guide*.

- 2 Click [Cancel] (  in Windows Vista) to close the Events Dialog (or the slide show screen) if it appears.  
If CameraWindow appears, click [Operate Images on Camera] followed by  in the View Window to close CameraWindow.

CameraWindow




Thumbnail Window

View Window

- 3** In the [Start] menu, select [All Programs] or [Programs], followed by [Canon Utilities], [CameraWindow], [RemoteCapture DC 3] and [RemoteCapture DC].



According to the default settings, recorded images are saved into the [Pictures] or [My Pictures] folder. To change the destination, open the [File] menu in the remote shooting window and select [Preferences].

- 4** Click  and check the subject in the viewfinder.
- 5** Change the image size or resolution, the rotation settings and the settings at the bottom of the window as required.
- 6** Click the [Release] button.



- You can release the shutter by pressing the camera's shutter button or the keyboard's space key.
- Other than the shutter button, the camera's buttons and switches, including the zoom, cannot be operated while the camera is being controlled with the Remote Shooting function.
- You may notice that the interval between the shutter release and activation is slightly longer for remote shooting than when the camera is used independently.

Shows/Hides the viewfinder or detailed settings area.

**Size and Resolution Selector**

Selects the size and resolution at which images are captured.

**Rotation Settings**  
Sets the rotation parameters for images after they are captured.

**Release Button**  
Releases the shutter.

Slide this to zoom the camera in or out.

**Start/Stop Viewfinder Button**  
Starts or stops the viewfinder display.

**Refresh Button**  
Resets the exposure, focus and white balance.

You can add comments to images by placing a check mark here and typing text in the boxes below.

**Viewfinder Display**  
Click the [Start/Stop Viewfinder] button while a connection to the camera is open to display the image appearing in the camera's viewfinder.



Set the basic camera settings here.

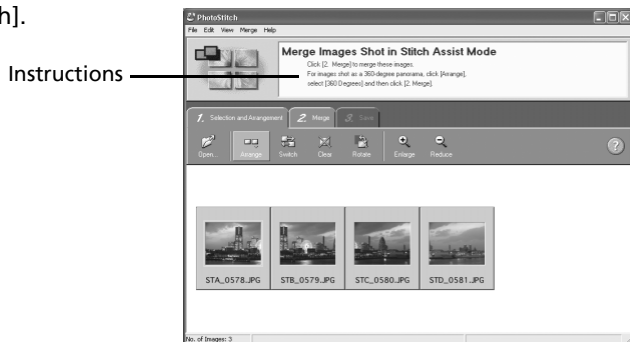


The settings available vary between camera models.

# Merging Panoramic Images – PhotoStitch

You can create a wide panoramic image by merging images of a scene shot separately. PhotoStitch automatically detects the overlapping areas of adjacent images and corrects for the size and orientation. You can also manually specify the overlapping areas.

- 1** Click [Edit] in the ZoomBrowser EX's Main Window and click [Stitch Photos].
- 2** Click [1. Select Images] and select several images in the Browser Area.
- 3** Click [2. Open PhotoStitch].



- 4** Merge the images following the instructions in the guidance panel at the top of the PhotoStitch window.

## Images Shot in Stitch Assist Mode

It is easy to merge images if they are shot with the camera's Stitch Assist mode because PhotoStitch can automatically detect the image order and orientation. The series of images are saved together in a single folder when they are downloaded from the camera.

Symbol displayed by images shot in Stitch Assist mode.



- Some camera models may not support Stitch Assist mode.
- See the *Camera User Guide* for information about shooting in Stitch Assist mode.
- Images shot in Stitch Assist mode with a wide converter, teleconverter or close-up lens cannot be merged accurately.


# Processing RAW Images

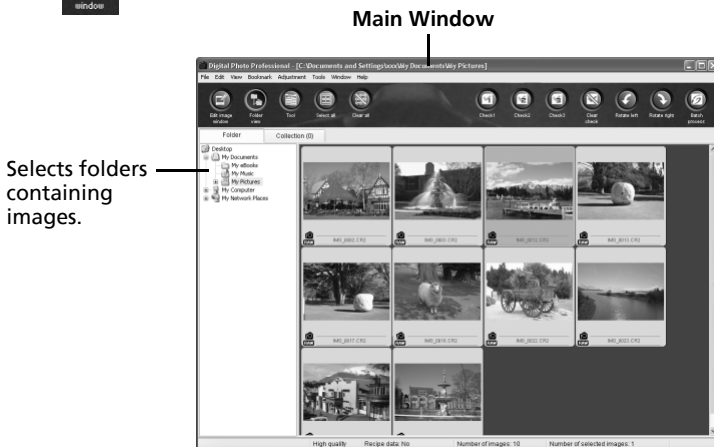
RAW images contain 'raw' data that has not been subjected to any compression processing by the camera. Since the data is captured in a proprietary format, it cannot be handled or displayed by standard software programs. You can use Digital Photo Professional to adjust and convert RAW images into standard JPEG or TIFF images with minimal image quality loss.



- RAW images can only be recorded on models that list RAW as one of the data types in the Specifications section of the Camera User Guide.
- Only RAW images compatible with Digital Photo Professional can be converted. Be sure to refer to the Data Type item in the Specification section of the *Camera User Guide*.
- The use of Digital Photo Professional is recommended on computers that satisfy the following system requirements.  
CPU: Core 2 Duo or better
- You can download a PDF manual from the Canon website that explains in detail how to use Digital Photo Professional.

## Converting Images

- 1 Click [Edit] in ZoomBrowser EX's Main Window, followed by [Digital Photo Professional Process RAW Images].
- 2 Select a RAW image in Digital Photo Professional's Main Window.
- 3 Click  (Edit image window).

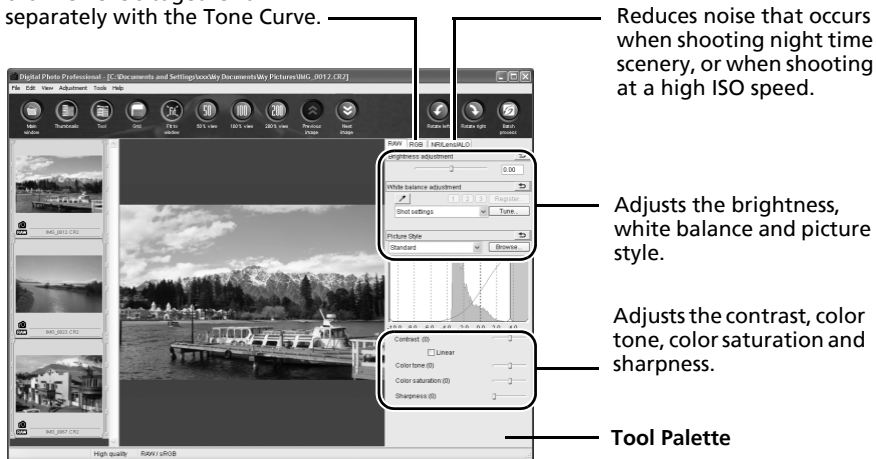


#### 4 Adjust the image brightness and white balance in the tool palette.

The modified contents (the information for image processing requirements) are saved along with the image as a "recipe".

The items available to be modified differ depending on the camera model.

You can adjust all three RGB channel levels together or separately with the Tone Curve.



Reduces noise that occurs when shooting night time scenery, or when shooting at a high ISO speed.

Adjusts the brightness, white balance and picture style.

Adjusts the contrast, color tone, color saturation and sharpness.

**Tool Palette**



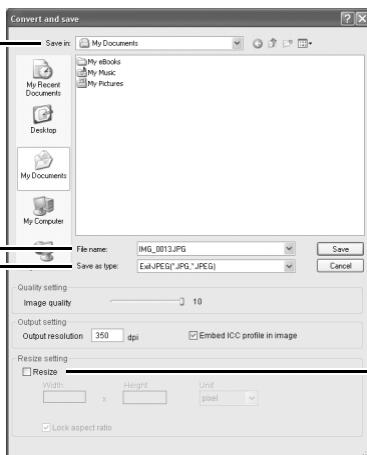
With Digital Photo Professional, you can adjust images to achieve the best results for your desired scene or subject by specifying a picture style.

#### 5 In the [File] menu, select [Convert and save], set the file type and destination and then click [Save].

Selects the file destination.

Renames the file.

Selects the file type.



## Printing Images

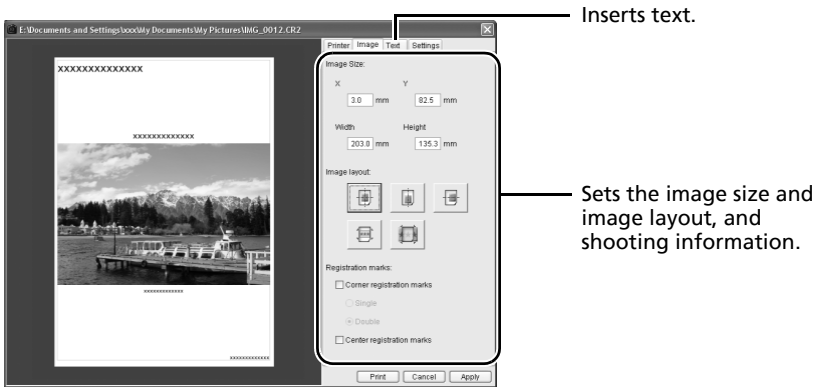
Digital Photo Professional offers the following printing methods.

### Single Print (Auto Settings)

After selecting an image in the Main Window, click the [File] menu and select [Print]. With this method you can automatically lay out a single image on a single sheet of paper and print it.

### Single Print (Detailed Setting)

After selecting an image in the Main Window, click the [File] menu and select [Print with detailed setting]. You can adjust the layout for a single image on a single sheet, and print out such items as an inserted title and shooting information along with the image.



### Contact Sheet

After selecting images in the Main Window, click the [File] menu and select [Contact Sheet Prints]. With this method, you can print multiple images on a single sheet. You can set the number of images and the layout and insert text too.





# Enjoy Customizing Your Camera with the My Camera Settings



My Camera functions are only available with camera models listed as compatible with My Camera functions in the *Specifications* section of the *Camera User Guide*.



- To register the My Camera settings with the camera, ensure that you install the software that came with the camera.
- Do not break the camera connection by unplugging the interface cable or switching off the camera power while the My Camera settings are being added to the camera or being saved to the computer from the camera.



## Adding My Camera Settings to the Camera

The start-up image, start-up sound, shutter sound, operation sound, and self-timer sound are called the My Camera settings. My Camera settings are saved onto your computer when you install the bundled software. This topic explains how to register the My Camera settings saved onto your computer with the camera.

- 1 After connecting the supplied interface cable to the computer's USB port and the camera's DIGITAL terminal, turn on the camera power, set it to playback mode and prepare it to communicate with the computer.



Methods for connecting the camera to the computer and placing the camera in the correct mode for connecting vary between camera models. See the *Camera User Guide*.

- 2 Click [Cancel] (  in Windows Vista) to close the Events Dialog if it appears. If CameraWindow appears, click [Operate Images on Camera] followed by  in the View Window to close CameraWindow.

CameraWindow



Thumbnail Window

View Window

**3** In the [Start] menu, select [All Programs] or [Programs], followed by [Canon Utilities], [CameraWindow], [MyCamera] and [MyCamera].

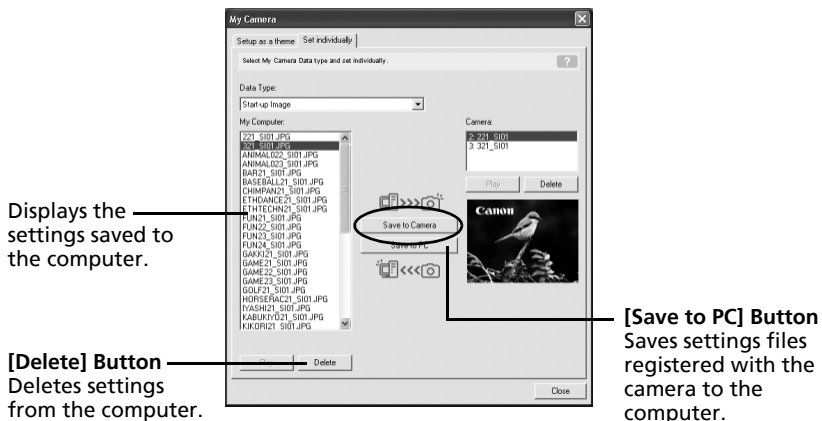
**4** Click [Connect to camera].  
The My Camera window showing images in the camera will display.



**5** Select the [Setup as a theme] tab.  
To set the start-up image or sound individually, select the [Set individually] tab.

**6** Select the settings to add and replace.  
Settings to add: select from the [My Computer] list.  
Settings to replace: Select from the [Camera] list.

**7** Click [Save to Camera]  
Clicking [OK] overwrites the settings previously registered on the camera.



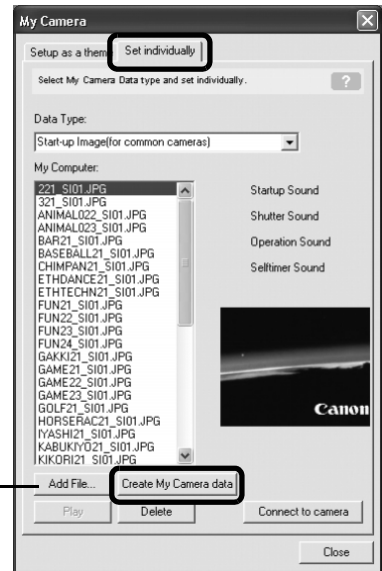
**8** Changing the My Camera settings with the camera.  
See the *Camera Users Guide*.

## Creating Original Start-Up Images or Sounds

You can use My Camera Maker to effortlessly create image files or sound files for use as start-up images or start-up sounds.

- 1** In the [Start] menu, select [All Programs] or [Programs], followed by [Canon Utilities], [CameraWindow], [MyCamera] and [MyCamera].  
The My Camera window will display.
- 2** Click the [Set individually] tab in the My Camera window, followed by the [Create My Camera Data] button.  
My Camera Maker will start.

**Add File Button**  
Adds images and sound files for use as settings files in the list.



- 3** Follow the instructions at the top part of the My Camera Maker window and create image or sound files.  
The created settings files automatically appear in the My Camera window.  
Add the files to the camera following the procedures in *Adding My Camera Settings to the Camera* (p. 39).



Use the following settings to create start-up images or start-up sounds using image editing software or sound processing software.

- Start-Up Images

Image Type : JPEG (Baseline JPEG)  
 Data Sampling : 4:2:0 or 4:2:2  
 Resolution (WxH) : 320 x 240 or 512 x 288\*  
 \* Varies with camera model

- Start-Up Sounds

Type : WAV (Monaural)  
 Bit Rate / Frequency : 8 bits (11.025 kHz or 8.000 kHz)

Set the sound file length to values approximating those in the following chart.

| Type             | Duration in Seconds |                  |
|------------------|---------------------|------------------|
|                  | 11.025 kHz          | 8.000 kHz        |
| Start-Up Sound   | 1.0 sec. or less    | 1.3 sec. or less |
| Shutter Sound    | 0.3 sec. or less    | 0.4 sec. or less |
| Operation Sound  | 0.3 sec. or less    | 0.4 sec. or less |
| Self-Timer Sound | 2.0 sec. or less    | 2.0 sec. or less |

# Using the Software on the Macintosh Platform – Preparations

This chapter explains how to install the software. Read this before connecting the camera to the computer for the first time.

## Installing the Software

Start by installing the software from the Canon Digital Camera Solution Disk.

### Items to Prepare

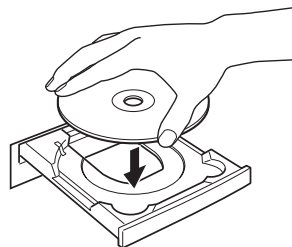
- Your camera and computer
- Canon Digital Camera Solution Disk
- Interface cable supplied with the camera

### Installation Procedures

- 1 Close any programs that are running.
- 2 Place the Canon Digital Camera Solution Disk in the computer's CD-ROM drive.
- 3 Double-click the [Canon Digital Camera Installer] icon



in the CD-ROM window.



- 4 Click the Digital Camera Software [Install] button.

Installer Panel



**5** Select [Easy Installation] and click [Next].

Select [Custom Installation] to select programs individually for installation.



**6** Click [Agree] if you agree to all of the terms of the software license agreement.



**7** Review the installation settings and click [Next].

Follow the on-screen instructions to proceed with the installation.

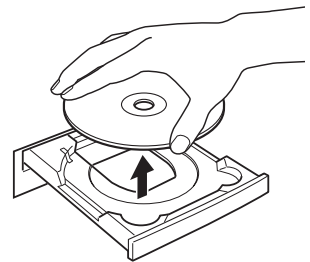


**8** When the installation is over, click [Finish].



**9** Click [Exit] in the installer panel and remove the disk from the CD-ROM drive.

This concludes the software installation.



See *Uninstalling the Software* (p. 71) to delete the software installed with these procedures.

Continue by downloading images to the computer (p. 45).

# Using the Software on the Macintosh Platform – The Basics

This chapter explains the procedures for using ImageBrowser to download the camera's images to the computer and print them.

Proceed to this chapter after completing the preparations in the *Using the Software on the Macintosh Platform – Preparations* section.

## Downloading Images to the Computer

Begin by downloading the images to your computer. The downloading procedure is slightly different depending on whether you are using a camera to computer connection (see below) or a memory card reader (p. 48).



- You may not be able to download images when the camera is connected to a computer if there are a large number of images (approximately 1000) on the memory card. Use a memory card reader to download in that case.
- Movie files take time to download since the files are large.

### Camera to Computer Connection

- 1 After connecting the supplied interface cable to the computer's USB port and the camera's DIGITAL terminal, turn on the camera power, set it to playback mode and prepare it to communicate with the computer.



Procedures for attaching the camera to the computer and placing the camera in the correct mode for connecting vary between camera models. See the *Camera User Guide*.

CameraWindow displays when the camera and computer are set to the mode to communicate. (Images are not downloaded at this point.)

### CameraWindow



Thumbnail Window

View Window




If CameraWindow does not open, click the [CameraWindow] icon in the Dock (the bar at the bottom of the desktop).


- Download the images using the camera or the computer.  
By default, the downloaded images are saved into the [Pictures] folder.

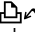
## Using the Camera to Download Images

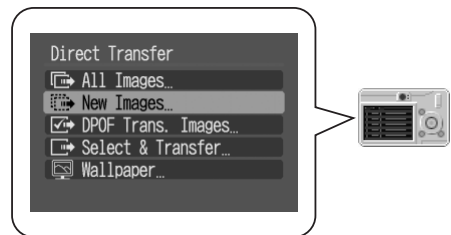
Download images using the camera's Direct Transfer function.



- If the conditions are right for the Direct Transfer function, the Direct Transfer settings menu will appear on the LCD monitor and the  (Print/Share) button will light blue.
- See the *Camera User Guide* for instructions regarding Direct Transfer settings and procedures.

Set the Direct Transfer settings on the camera and press the  (Print/Share) button or the FUNC./SET button.

The  (Print/Share) button will blink blue during the transfer and remain lit when it is complete. Click the mouse button or press any key on the keyboard to resume the ability to operate from the computer.






## Using the Computer to Download Images

Click [Transfer Untransferred Images].



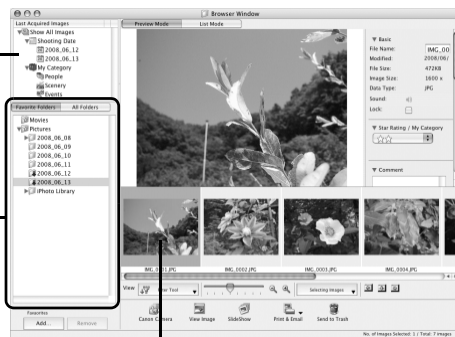
- To download images that have had transfer settings set with the camera, use the camera or a memory card reader (p. 48).
- To check images in the camera or to download only a portion of the images, click [Operate Images on Camera].
- You can choose standard or frame-by-frame playback (OS X v10.4 only) of movies by selecting a movie in the Thumbnail Window.
- You can also click  in the View Window to upload to the camera still images that were downloaded to the computer.

When you click [OK] in the image transfer completion window, the transferred images will display in the Main Window.

The downloaded images are saved into folders according to the shooting date.

The last downloaded images will display here according to both their shooting dates and categories.

**Folders Area**  
The downloaded symbol displays on downloaded folders.



**Thumbnail**

Next, print out the images (p. 49).

## Memory Card Reader Connection

- 1** Insert the memory card into the reader.  
Use a separately sold card adapter if required.  
See the manual for the memory card reader for details on how to connect and use the reader.
- 2** Click [Download Images].

You can adjust the settings, such as the type of image downloaded and the destination folder, by clicking [Preferences].



If the window above does not open, click the [CameraWindow] icon in the Dock (the bar at the bottom of the desktop).



- By the default settings, all images are downloaded to the [Pictures] folder.
- To download images that have had their transfer settings set with the camera, click [Preferences] and select [Images whose transfer settings were specified with the camera] as the image type to be downloaded.
- Click [Lets you select and download images] to show the memory card images in a list, check the images before downloading and download only selected images.
- See *Memory Card Folder Structure* (p. 72) for information about memory card folder structures and file names.

The downloaded images are saved into folders according to the shooting date.

At the same time they will also appear grouped by date or *My Category* in the [Last Acquired Images] section.

Next, print out the images (p. 49).

# Printing Images

There are three methods for using ImageBrowser to print images: [Photo Print], [Index Print] and [Layout Print]. This section explains how to use the [Photo Print] option.



Movies cannot be printed, but you can print still images saved from movies.

## Photo Print

Prints one image on each page.

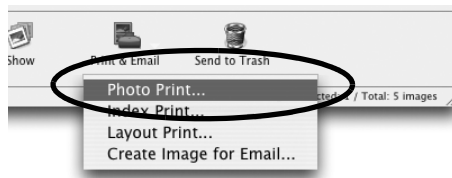
### 1 Select the images to print.

Clicking on an image selects it and displays a blue frame around it. To select multiple images, hold down the [shift] or [⌘] (command) key while clicking on images.



A blue frame displays around selected images.

### 2 Click [Print & Email] and select [Photo Print].



Selecting [Index Print] allows you to print the thumbnails and shooting information in a chart.  
Selecting [Layout Print] allows you to layout and print multiple images on a single sheet of paper.

**3** Set the categories as you feel necessary.

Selects a printer.

Selects options such as the paper size and orientation when you click [Page Setup].

Selects a printing method for the shooting date/time information.



Click this button to switch between images if you selected multiple images.

Sets the number of copies printed.

Text can be inserted here to print with this photo.

**4** Click [Print].

The Print window will now open.

**5** After setting the number of copies, and other settings, click [Print].

**6** After the printing finishes, click [Close] to close the window.

This chapter explained the ImageBrowser basics.

Once you have mastered them, try the advanced techniques.

- *Using the Software on the Macintosh Platform – Advanced Techniques* (p. 51).

# Using the Software on the Macintosh Platform – Advanced Techniques

This chapter explains various ImageBrowser features.

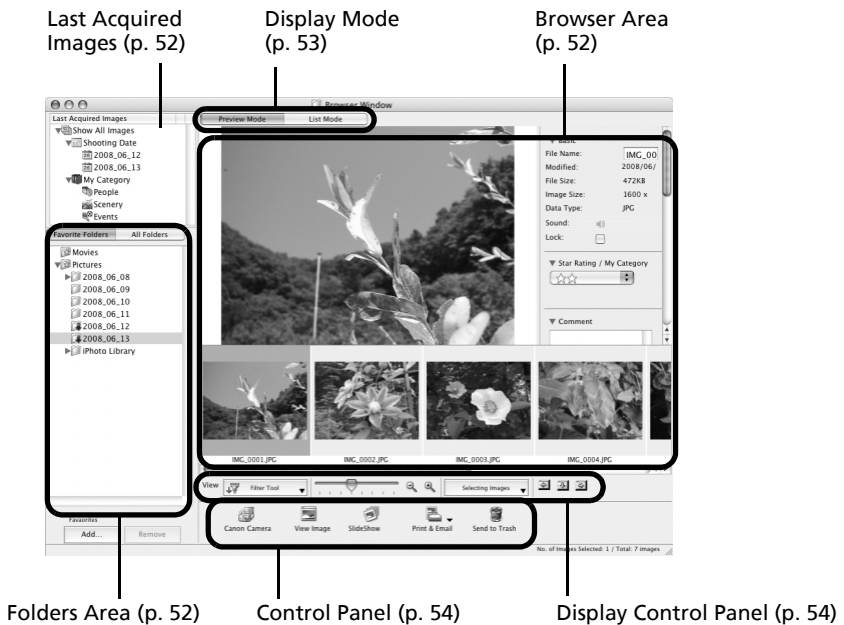
Proceed to this chapter once you have mastered the basic ImageBrowser procedures in the *Using the Software on the Macintosh Platform – The Basics* chapter.

## The ImageBrowser Windows

This section describes the principal ImageBrowser windows: the Browser Window, Viewer Window and File Information Window.

### Browser Window

This window is for displaying and organizing images downloaded to the computer.



## Folders Area

- Use this area to select folders. The selected folders and the images within the selected folders display in the Browser Area.
- If you selected Favorite Folders, only the folders registered in advance as Favorite Folders will display. You are recommended to register a folder that you use frequently as one of the Favorite Folders. If you selected All Folders, all the folders will display.

### Methods for Registering a Favorite Folder

- If [Favorite Folders] is displayed: click [Add] and select a folder.
- If [All Folders] is displayed: select a folder and click [Add to Favorites].

## Last Acquired Images

- You can check images grouped according to the shooting date or My Category.

## Browser Area

- The folders and the images within the folders selected in the Last Acquired Images section or Folders Area display here.  
The display style will vary according to your Display Mode selection.
- The following types of icon will display around images according to their attributes.



Images shot with the camera's Stitch Assist mode



RAW images



Movies



Images with sound memo attachments



Protected images



Images shot with the camera's AEB function



Rotated Images (In display only)

## Display Mode

- Selects the display style for the Browser Area.

### Preview Mode

This mode displays the image at a larger size as well as the image information.



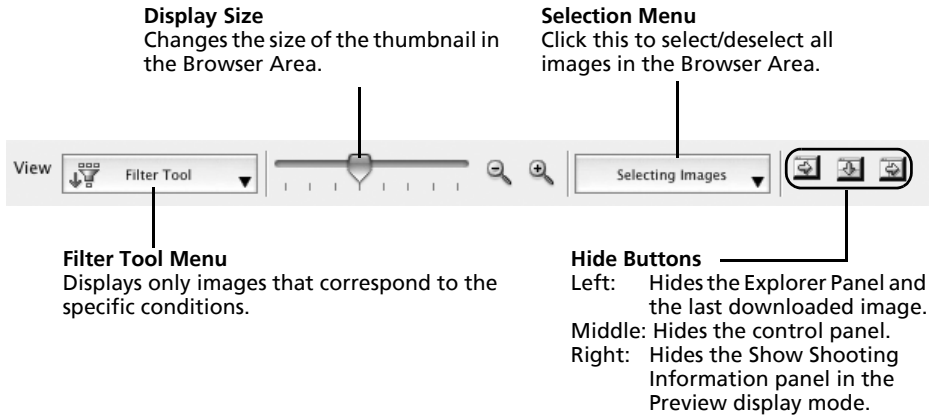
### List Mode

Displays the images in the folder selected in the Explorer Panel section in rows and columns.



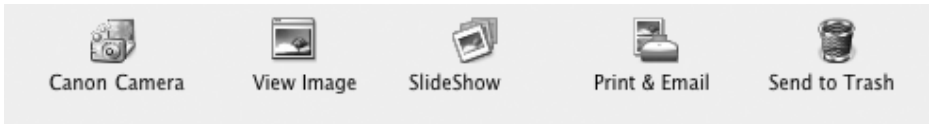
## Display Control Panel

- This panel adjusts the display settings for the Browser Area.



## Control Panel

- The control panel contains buttons for executing various functions.

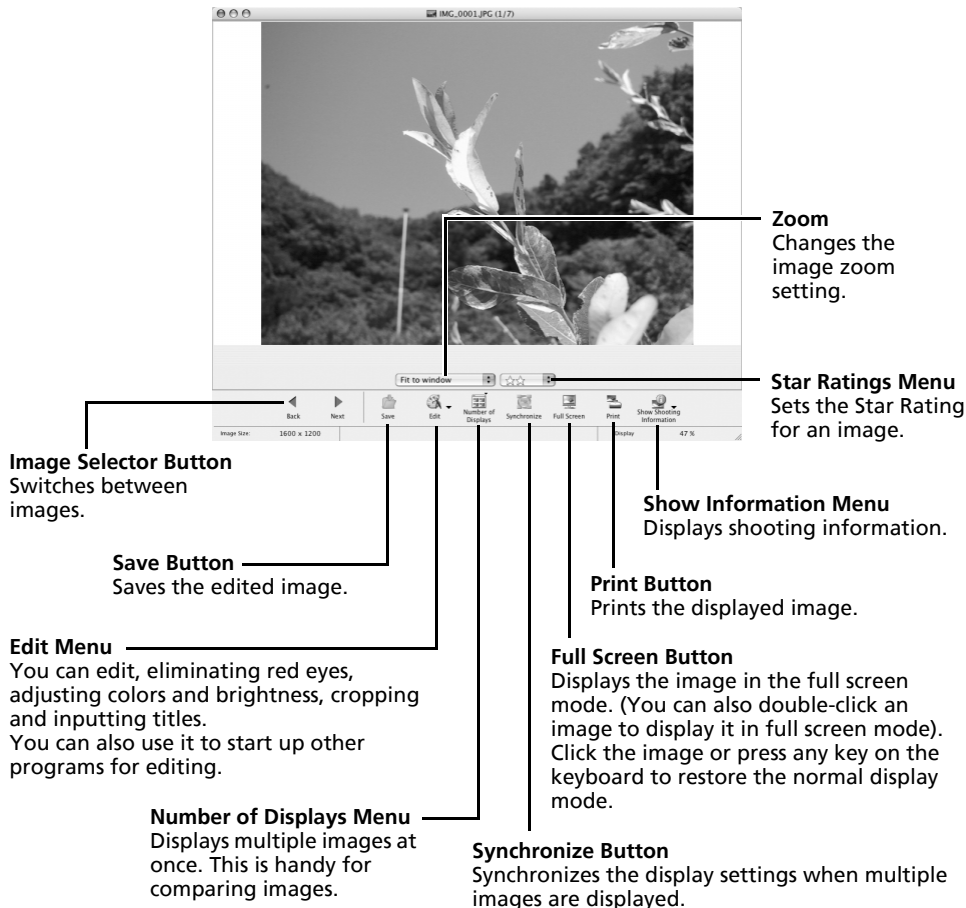


The functions displayed here are explained in the *Control Panel Features* section (p. 58).



## Viewer Window

Double-click an image in the Browser Area to display it in the Viewer Window.



### • RAW Image is Displayed

The [Display Original Image] button displays beneath the image. Clicking this button displays the converted image in the Viewer Window.

### • Movie is Displayed

- Buttons will appear below the movie, allowing it to be played back or the sound to be adjusted.
- If you click the [Save as Still Image] button, you can extract still images from movies. You can also delete unwanted sections at the beginning or end of movies by clicking the [Cut Movie] button.

## File Information Window

The File Information Window displays when you select an image in the Browser Area, click the [File] menu and select [Get Info]. The File Information Window does not display in the Preview display mode.

Switches between showing and hiding detailed information for the category.

Switches between showing and hiding detailed information.

Plays a sound memo attached to an image.

**Lock**  
Prevents an image from being overwritten or deleted.

**Image Selector Buttons**  
When multiple images are selected, you can switch between images that display information in the File Information Window.

**File Name**  
You can change file names.

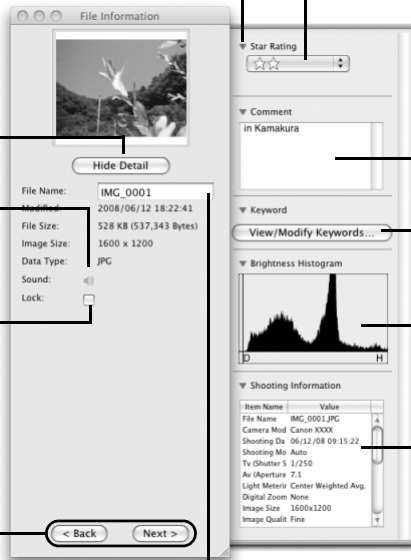
**Star Rating / My Category**  
Sets the rating for an image.  
An icon will display if a My Category is set.

**Comment**  
You can type a comment here.

**Keyword**  
Sets the keywords used in searches.

**Brightness Histogram**  
A graph of the highlights and shadows distribution in an image.

**Shooting Information**  
Displays detailed information, such as the shutter speed and exposure compensation setting. The camera model will determine what information is displayed.



# ImageBrowser Features

This section provides a brief introduction to ImageBrowser features.



Some ImageBrowser functions may not be available with certain camera models. Check the *Specifications* section of your *Camera User Guide* to see if your model supports them.

## Workflow

The following workflow is used in ImageBrowser.

- 1 Select a feature from the Control Panel or the menu.



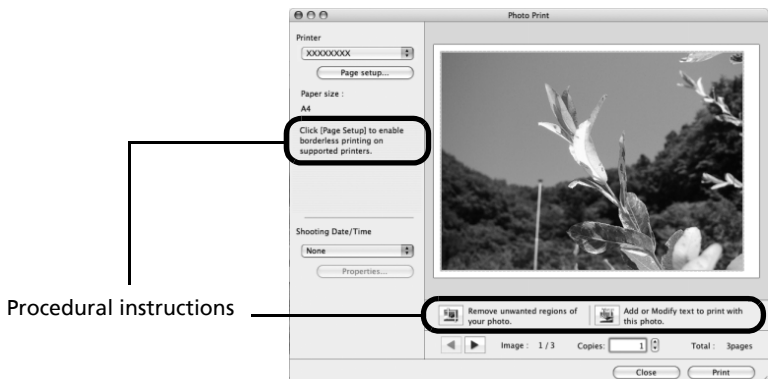
Menu

Check the Help menu for procedures and features.



Control Panel

- 2 Perform the procedures according to the instructions.



Procedural instructions

## Control Panel Features



### Canon Camera

CameraWindow will display if the camera is connected, and you will be able to perform the following actions.



#### Acquire Images

Downloads images and sound files from the camera (p. 45).



#### Print

Selects and prints the images in a camera.



#### Write to Camera

Uploads images on the computer to the camera.



#### Set to Camera

Sets the camera owner's name.

You can perform the following actions if a memory card reader is connected.

- **Download images from the memory card**

Download image or sound files from the memory card (p. 48).

You can also specify images on the memory card for printing.

- **Upload images to the memory card**

Upload images from the computer to the memory card.

### View Image

Displays the selected image or movie in the Viewer Window.

### SlideShow

Starts a slide show of the selected images. Click the [View] menu and select [Slide Show Options] to set the slide show settings.

## Print & Email

### Photo Print

Prints one image per page (p. 49).

You can print "photos" easily.

### Index Print

Lines up small versions of the images in rows and prints.

### Layout Print

Allows you to freely arrange multiple images on a single page and print. You can also insert captions and titles.

### Create Image for Email

Converts the selected images to the appropriate size for transmission by e-mail. You can also use it to automatically start an e-mail program after conversion.

## Send to Trash

Sends the selected images or folders to the Trash.

## Functions Selected from Menus

### Search Images: [File] menu, [Search]

Searches for images based on such criteria as Star Ratings, dates, keywords or captions.

### Export Images: [File] menu, [Export Images]

- Edit and Save: allows you to change the file type or size and export the file.
- Export Shooting Properties: allows you to export the shooting properties as a text file.
- Export as a Screensaver: Exports the image as a screen saver file.
- Export an Image as Wallpaper: Exports the image as a wallpaper file.

### Organize Images: [File] menu, [Organize Image]

- Sort Images: sorts images according to criteria such as the shooting date or Star Rating and saves them into a specified folder.
- Rename: changes the files names of multiple images in a single pass.

### Convert RAW Images: [File] menu, [Process RAW Images by Digital Photo Professional] (certain models only)

Converts RAW images into JPEG or TIFF images. You can adjust the image brightness, contrast and color balance among other attributes during conversion (p. 65).

### Merge Panoramas: [Edit] menu, [PhotoStitch]

Merges multiple images and creates a single large panoramic image (p. 64).

**Display Settings: [View] menu, [View Settings]**

Hides or shows image information beneath the thumbnail, such as the file name or the shooting date and time.

**Sort Images: [View] menu, [Sort]**

Arranges image order in the Browser Area according to criteria such as the filename, file modification date, file size or shooting date.

## Other Features

ImageBrowser has the following features as well.

**[My Camera Settings] (certain models only)**

You can set the camera's settings such as the start-up image or shutter sound (p. 68).

**[Remote Shooting] (certain models only)**

You can shoot and operate the camera from a computer (p. 61).

# Operating the Shutter Remotely (Remote Shooting)

You can record still images by using a computer to control the shutter of a connected camera. This is particularly useful for checking images on the larger display of the computer as you record them and for high volume photography without worrying about filling the camera's memory card.



- Ensure that you turn off your computer's sleep mode before you begin remote shooting. The device performance cannot be guaranteed if the computer enters the sleep mode.
- RAW images can not be recorded.




Remote Shooting can only be used with camera models listed as compatible with remote shooting in the *Specifications* section of the *Camera User Guide*.

- 1 Attach the supplied interface cable to the computer's USB port and the camera's DIGITAL terminal and place the camera in the correct mode for connecting.



Methods for connecting the camera to the computer and placing it in the correct mode for connecting vary between camera models. Please refer to the *Camera User Guide*.

- 2 If CameraWindow appears, click [Operate Images on Camera] followed by  in the View Window to close CameraWindow.

CameraWindow




Thumbnail Window

View Window

- 3** Double-click the [Applications] folder, followed by the [Canon Utilities] folder, [CameraWindow] folder and the [RemoteCapture DC] icon.



According to the default settings, recorded images are saved into the [Pictures] folder. To change the destination, select [Preferences] from the [RemoteCapture DC] menu.

- 4** Click  and check the subject in the viewfinder.
- 5** Change the image size or resolution, the rotation settings and the settings at the bottom of the window as required.
- 6** Click the [Release] button.



- You can also release the shutter by pressing the camera's shutter button or the keyboard's space key.
- Other than the shutter button, the camera's buttons and switches, including the zoom, cannot be operated while the camera is being controlled with the Remote Shooting function.
- You may notice that the interval between the shutter release and activation is slightly longer for remote shooting than when the camera is used independently.



Shows/Hides the viewfinder or detailed settings area.

### Size and Resolution Selector

Selects the size and resolution at which images are captured.

### Rotation Settings

Sets the rotation parameters for images after they are captured.

### Release Button

Releases the shutter.

Slide this to zoom the camera in or out.

### Start/Stop Viewfinder Button

Starts or stops the viewfinder display.

**Refresh Button**  
Resets the exposure, focus and white balance.

You can add comments to images by placing a check mark here and typing text in the boxes below.

**Viewfinder Display**  
Click the [Start/Stop Viewfinder] button while a connection to the camera is open to display the image appearing in the camera's viewfinder.



Set the camera shooting settings here.



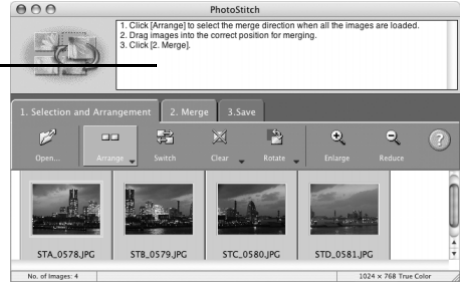
The settings available vary between camera models.

# Merging Panoramic Images – PhotoStitch

You can create a wide panoramic image by merging images of a scene shot separately. PhotoStitch automatically detects the overlapping areas of adjacent images and corrects for the size and orientation. You can also manually specify the overlapping areas.

- 1** Select a series of images in the ImageBrowser's Browser Area.
- 2** Click the [Edit] menu and select [PhotoStitch].

Instructions



- 3** Merge the images following the instructions in the guidance panel at the top of the PhotoStitch window.

## Images Shot in Stitch Assist Mode

It is easy to merge images if they are shot with the camera's Stitch Assist mode because PhotoStitch can automatically detect the image order and orientation. The series of images are saved together in a single folder when they are downloaded from the camera.

Symbol displayed by images shot in Stitch Assist mode.



- Some camera models may not support Stitch Assist mode.
- See the *Camera User Guide* for information about shooting in Stitch Assist mode.
- Images shot in Stitch Assist mode with a wide converter, teleconverter or close-up lens cannot be merged accurately.


# Processing RAW Images

RAW images contain 'raw' data that has not been subjected to any compression processing by the camera. Since the data is captured in a proprietary format, it cannot be handled or displayed by standard software programs. You can use Digital Photo Professional to adjust and convert RAW images into standard JPEG or TIFF images with minimal image quality loss.



- RAW images can only be recorded on models that list RAW as one of the data types in the Specifications section of the Camera User Guide.
- Only RAW images compatible with Digital Photo Professional can be converted. Be sure to refer to the Data Type item in the Specification section of the *Camera User Guide*.
- The use of Digital Photo Professional is recommended on computers that satisfy the following system requirements.  
CPU: Core 2 Duo or better
- You can download a PDF manual from the Canon website that explains in detail how to use Digital Photo Professional.

## Converting Images

- 1 Click an image, then select [Process RAW Images by Digital Photo Professional] in the [File] menu.
- 2 Select a RAW image in Digital Photo Professional's Main Window.
- 3 Click  (Edit image window).

Selects folders containing images.

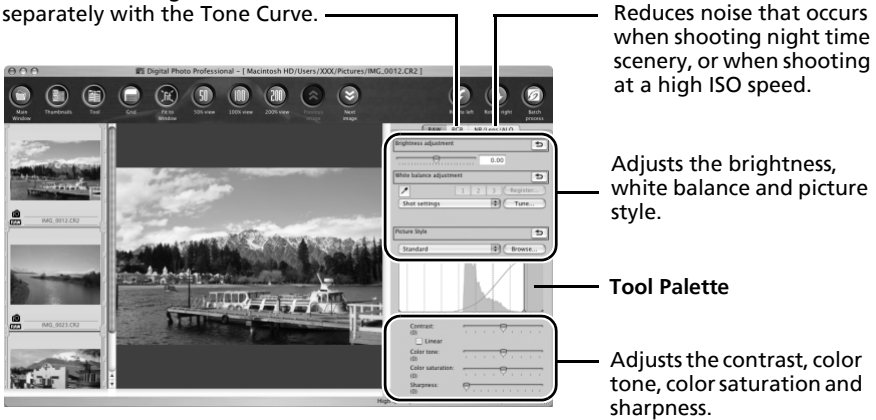



**4** Adjust the image brightness and white balance in the tool palette.

The modified contents (the information for image processing requirements) are saved along with the image as a “recipe”.

The items available to be modified differ depending on the camera model

You can adjust all three RGB channel levels together or separately with the Tone Curve.



 With Digital Photo Professional, you can adjust images to achieve the best results for your desired scene or subject by specifying a picture style.

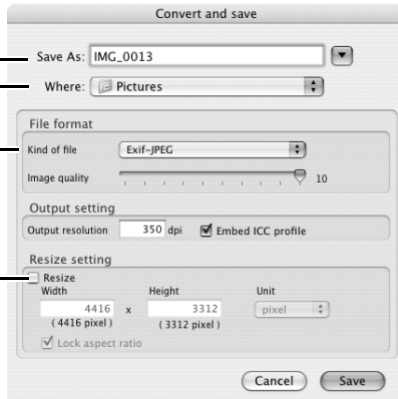
**5** In the [File] menu, select [Convert and save], set the file type and destination and then click [Save].

Renames the file.

Selects the file destination.

Selects the file type.

Insert a check mark here to change the file size.



## Printing Images

Digital Photo Professional offers the following printing methods.

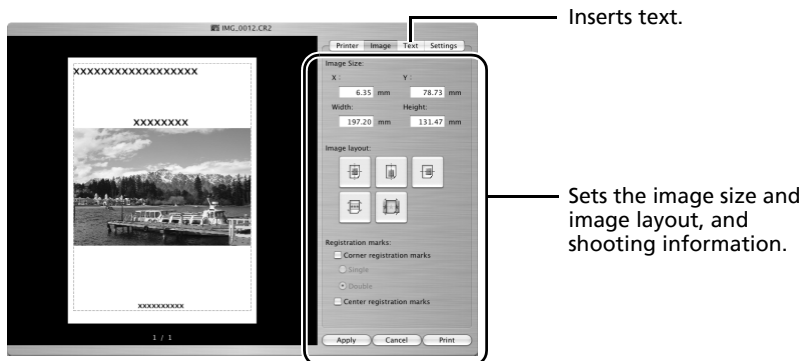
### Single Print (Auto Settings)

After selecting an image in the Main Window, click the [File] menu and select [Print]. With this method you can automatically lay out a single image on a single sheet of paper and print it.

### Single Print (Detailed Setting)

After selecting an image in the Main Window, click the [File] menu and select [Print with detailed setting].

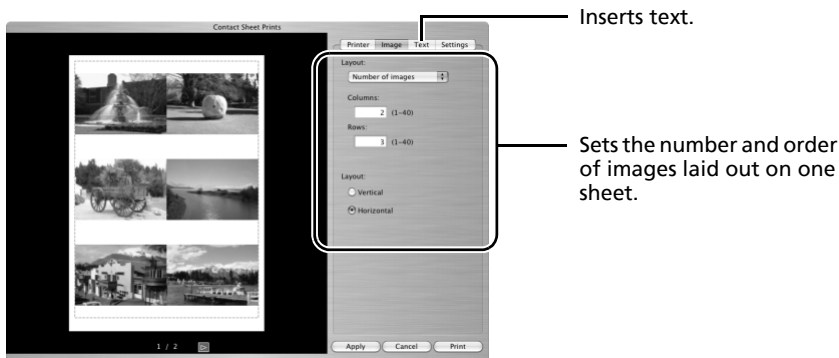
You can adjust the layout for a single image on a single sheet, and print out such items as an inserted title and shooting information along with the image.



### Contact Sheet

After selecting images in the Main Window, click the [File] menu and select [Contact Sheet Prints].

With this method, you can print multiple images on a single sheet. You can set the number of images and the layout and insert text too.



# Enjoy Customizing Your Camera with the My Camera Settings



My Camera functions can be only available with camera models listed as compatible with My Camera functions in the *Specifications* section of the *Camera User Guide*.



- To register the My Camera settings with the camera, ensure that you install the software that came with the camera.
- Do not break the camera connection by unplugging the interface cable or switching off the camera power while the My Camera settings are being added to the camera or being saved to the computer from the camera.

## Adding My Camera Settings to the Camera

The start-up image, start-up sound, shutter sound, operation sound, and self-timer sound are called the My Camera settings. My Camera settings are saved onto your computer when you install the bundled software. This topic explains how to register the My Camera settings saved onto your computer with the camera.

- 1 After connecting the supplied interface cable to the computer's USB port and the camera's DIGITAL terminal, turn on the camera power, set it to playback mode and prepare it to communicate with the computer



Procedures for attaching the camera to the computer and placing the camera in the correct mode for connecting vary between camera models. See the *Camera User Guide*.


- 2 If CameraWindow appears, click [Operate Images on Camera] followed by in the View Window to close CameraWindow.

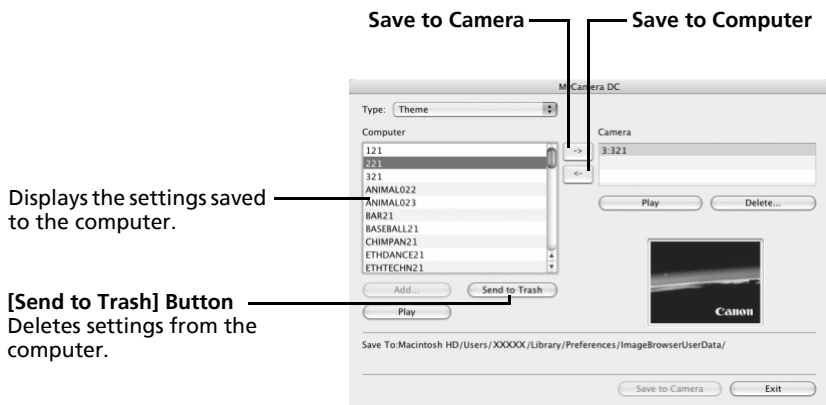
CameraWindow



Thumbnail Window

View Window

- 3** Double-click the [Applications] folder, followed by the [Canon Utilities] folder, [CameraWindow] folder and the [MyCamera DC] icon.  
The My Camera window will display.
- 4** Select the type of setting in the Type list box that you wish to save to the camera.
- 5** Select the settings to add and replace.  
Settings to add: select from the [Computer] list.  
Settings to replace: Select from the [Camera] list.
- 6** Click the  button.  
If a setting for this category has previously been saved to the camera, press [OK] and it will be overwritten.
- 7** Click the [Save to Camera] button.  
Click [OK] to conclude the process of saving the *My Camera* settings to the camera.



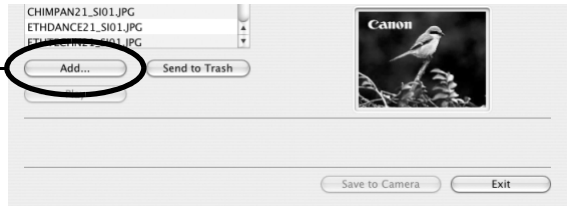
- 8** Changing the My Camera settings with the camera.  
See the *Camera Users Guide*.

## Adding Original Start-Up Images or Sounds

You can add original start-up images or sounds created with image editing and other software to the My Camera Window. Sound files are saved as WAVE-type files.

- 1 Double-click the [Applications] folder, followed by the [Canon Utilities] folder, [CameraWindow] folder and the [MyCamera DC] icon.  
The My Camera window will display.
- 2 Select the [Start-up Image] in Type.  
For sound files, select either [Start-up Sound], [Operation Sound], [Selftimer Sound] or [Shutter Sound].
- 3 Click [Add].

**[Add] Button**  
Adds images and sound files for use as settings files in the list.



- 4 Select the file you created and click [Open].  
This concludes the process for adding new data.

You can add the settings files you just added to the computer to the camera using the same procedures as in *Adding My Camera Settings to the Camera* (p. 68).



Use the following settings to create start-up images or start-up sounds using image editing software or sound processing software.

- Start-Up Images
  - Image Type : JPEG (Baseline JPEG)
  - Data Sampling : 4:2:0 or 4:2:2
  - Resolution (WxH) : 320 x 240 or 512 x 288\*  
\* Varies with camera model
- Start-Up Sounds
  - Type : WAV (Monaural)
  - Bit Rate / Frequency : 8 bits (11.025 kHz or 8.000 kHz)

Set the sound file length to values approximating those in the following chart.

| Type             | Duration in Seconds |                  |
|------------------|---------------------|------------------|
|                  | 11.025 kHz          | 8.000 kHz        |
| Start-Up Sound   | 1.0 sec. or less    | 1.3 sec. or less |
| Shutter Sound    | 0.3 sec. or less    | 0.4 sec. or less |
| Operation Sound  | 0.3 sec. or less    | 0.4 sec. or less |
| Self-Timer Sound | 2.0 sec. or less    | 2.0 sec. or less |



# Appendices

This chapter explains how to uninstall the programs. Read the *Troubleshooting* section in this chapter if you experience a problem using the programs.

## Uninstalling the Software

The procedures for uninstalling the software are only required when you wish to delete the programs from your computer or when reinstallation is required to fix corrupted files.



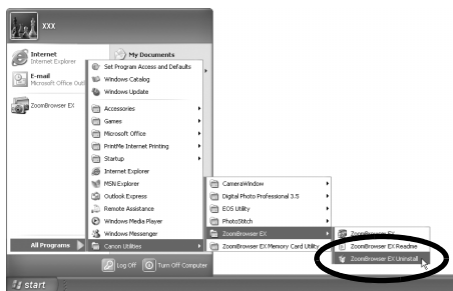
Authorization as a computer Administrator is required to uninstall software.

### Windows

This explanation uses ZoomBrowser EX to demonstrate how to uninstall a program. You can remove other programs with the same procedures.

- 1 Click the Windows [Start] menu and select [All Programs] or [Programs], followed by [Canon Utilities], [ZoomBrowser EX] and [ZoomBrowser EX Uninstall].

The uninstall utility will start and remove ZoomBrowser EX.



### Macintosh

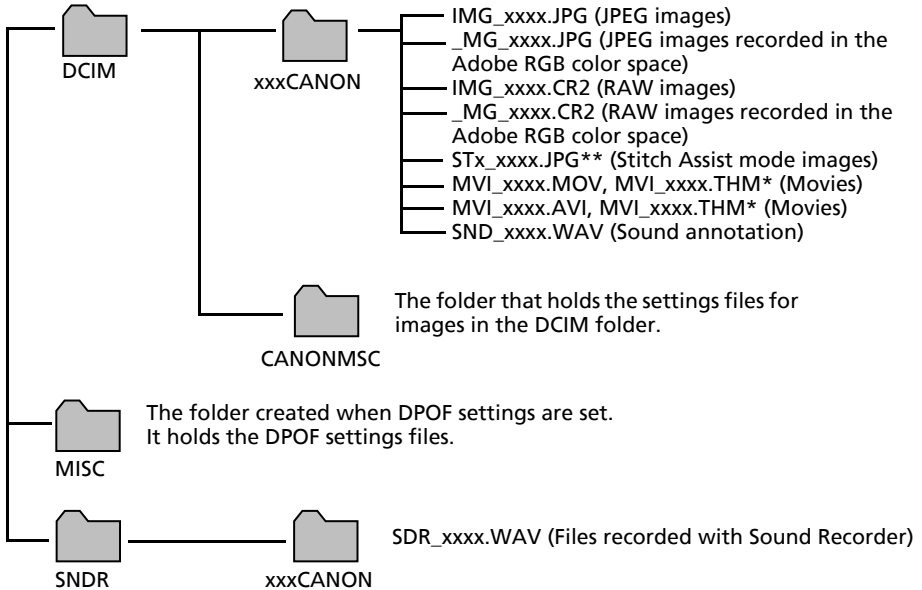
Uninstall the programs by dragging the application's folder (the folder in which it was installed) into the Trash, and then empty the Trash.



Please be careful not to accidentally delete any folders with downloaded images that may be contained within the application folder.

# Memory Card Folder Structure

The images on a memory card are placed in subfolders of the [DCIM] folder labeled [xxxCANON], where the “xxx” represents a number in the range 100 - 999.



- \*Files with the THM extension are the thumbnail image files for the camera's index replay mode. If you delete these files, you will be unable to save the movies to the camera from a computer.
- The “xxxx” in file names represent four-digit numbers.
- \*\*Each successive file shot in Stitch Assist mode is assigned a letter starting from “A,” which is inserted as the third digit in the name. i.e. [STA\_0001.JPG], [STB\_0002.JPG], [STC\_0003.JPG]...
- All folders except the “xxxCANON” folders contain image settings files. Do not open or delete them.
- Depending on the camera, some data types cannot be recorded.

# Troubleshooting

Please read this section if you encounter a problem using the software.

## Start by Checking This

Investigate the following points first if you encounter a problem.



**Does your computer satisfy the requirements listed in the *System Requirements* section (p. 9)?**



**Is the camera correctly connected to the computer?**

See the *Camera User Guide* for the correct connection procedures. Also check to ensure that you are using the correct cable and that it is securely attached at both ends.



**Are the camera and computer in the correct modes to transfer data?**

Some models require the camera to be set to the playback mode to transfer data. See the *Camera User Guide* for details.



**Is the battery sufficiently charged?**

Check the battery charge if you are powering the camera with a battery. You are recommended to use an AC adapter (sold separately) to power the camera when it is connected to a computer.

## Problems

Try the suggested solutions to the common problems listed below.



### Add New Hardware Wizard displays when the camera is connected to the computer with an interface cable (Windows).


Click [Cancel] to close the window. Temporarily disconnect the camera from the computer. Next, read *Start by Checking This* on the previous page and resolve the problem.



### Cannot download images or shoot remotely. (For cameras connected to the computer via an interface cable: only cameras supporting Hi-Speed USB 2.0).

The problem may be resolved by lowering the transmission speed for data by following the procedures below.

#### **Solution:**

Hold the **MENU** button on the camera down and press the  (Print/Share) button and **FUNC./SET** button simultaneously. In the displayed screen, select [B] and press the **FUNC./SET** button.



### Camera not detected, Events dialog won't display or images will not download to the computer (when camera is connected to the computer via an interface cable (Windows)).

The camera may have been recognized as another device under the following circumstances (Windows only).

- The [Scanners and Cameras] icon cannot be found in the [Hardware and Sound] within the [Control Panel] or the [Printers and Other Hardware] window.
- Your camera model name, [Canon Camera] or a camera icon does not display when [Scanners and Cameras] icon is clicked.

#### **Solution:**

Delete the device with the following procedures.




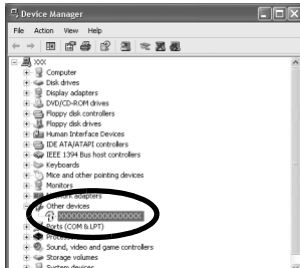
You must be authorized as a Computer System Administrator to delete devices.

1. Display the [Device Manager] dialog.

**Windows Vista:** Click the [Start] menu, [Control Panel], [System and Maintenance], [System], and Task list [Device Manager].

**Windows XP:** Click the [Start] menu, [Control Panel], [Performance and Maintenance], [System], [Hardware] tab, and the [Device Manager] button.

- Click the  symbol beside the [Other devices], [Portable Devices] and/or [Imaging devices] category. Your camera model name or [Canon Camera] will display in these categories if it is being recognized as an "other" device.



There are other potential reasons for the problem if the "Other devices", "Portable Devices" or "Imaging devices" categories do not appear or your camera model name or [Canon Camera] does not appear. Proceed to Step 5, and temporarily quit the procedures.

- Select your camera model name or [Canon Camera], right-click and select [Delete].
- Click [OK] in the confirmation dialog. Delete all instances of your camera model name or [Canon Camera] if it appears in one or more places in the [Other devices] or [Imaging devices] categories.
- Close [Device Manager] or [System Properties].

## Zooming Images in ZoomBrowser EX is Slow or Not Working

Some graphics cards or settings may cause the display of zoomed images in ZoomBrowser EX to slow down or malfunction. If this occurs, set your computer display's Hardware acceleration setting to a lower setting.

1. Click the Windows [Start] menu, followed by [Control Panel].
2. Display the [Hardware acceleration] setting window.

**Windows Vista:** Click [Appearance and Personalization], followed by [Adjust screen Resolution], [Advanced Settings] button and [Troubleshoot] tab.

**Windows XP:** Click the [Appearance and Theme] icon, followed by the [Display] icon, [Settings] tab, [Advanced] button and [Troubleshoot] tab.

3. Set the [Hardware acceleration] to a setting below [Full] and click [OK].
4. Restart the computer if prompted.

## An error message "Insufficient free memory" displays when using PhotoStitch

Please try one of the following methods.

- Close all other applications other than PhotoStitch.
- Reduce the size or number of images to combine.
- In the [Save] tab, select [Adjust image...], then in "Saved Image Size" reduce the size.

# Downloading Images without Installing the Software

You can download images by simply connecting the camera to a computer, without installing the software bundled on the Canon Digital Camera Solution Disk.

However, please note that there are several limitations.



If you use the bundled software, the following limitations do not apply.

- It may take a few minutes, after connecting to the camera, until you can download images.
- The camera information (firmware version, etc.) may not display correctly. In this case, use the software from the Canon Digital Camera Solution Disk.
- Sound files attached to still images as sound memos and sound files recorded with the Sound Recorder function may not download depending on file size and software used.
- RAW images or JPEG images recorded at the same time as RAW images may not be downloadable with some software programs or operating systems.
- Movies may not download correctly if the file size or software program is incompatible.
- Images shot in the vertical orientation may be downloaded in the horizontal position.
- The protection setting for images protected in the camera may be lost when transferred to the computer.
- In addition, there may be problems with downloading images or image information correctly depending upon the version of the operating system in use, the file size or the software in use.

# Index

## A

Adobe Reader ..... 2

## B

Browser Area  
 Macintosh ..... 51, 52  
 Windows ..... 22, 23  
 Browser Window ..... 51

## C

CameraWindow  
 Macintosh ..... 46, 47, 61, 68  
 Windows ..... 16, 17, 32, 39  
 Canon Digital Camera Solution Disk ..... 10  
 Macintosh ..... 43  
 Windows ..... 11  
 Comment  
 Macintosh ..... 56  
 Windows ..... 27  
 Computer ..... 9  
 Connecting to a computer ..... 3  
 Macintosh ..... 45  
 Windows ..... 15  
 Control Panel ..... 51, 54, 57, 58  
 Cropping  
 Macintosh ..... 55  
 Windows ..... 26

## D

Digital Photo Professional  
 Macintosh ..... 65  
 Windows ..... 36  
 Direct Transfer Function  
 Macintosh ..... 46  
 Windows ..... 17  
 Display Control Panel  
 Macintosh ..... 51, 54  
 Windows ..... 22, 25  
 Display Mode  
 Macintosh ..... 51, 53  
 Windows ..... 22, 24  
 Downloading Images  
 Macintosh ..... 45  
 Windows ..... 15

## E

Editing Movies (Cutting Movies) ..... 5  
 Macintosh ..... 55  
 Windows ..... 26  
 Events Dialog ..... 16, 74  
 Extracting Stills from Movies ..... 5  
 Macintosh ..... 55  
 Windows ..... 26

## F

Favorite Folder  
 Macintosh ..... 52  
 Windows ..... 23  
 File Information Window ..... 56  
 Filter Tool  
 Macintosh ..... 54  
 Windows ..... 25  
 Folders Area  
 Macintosh ..... 47, 51, 52  
 Windows ..... 18, 22, 23  
 Function Buttons ..... 22, 25

## I

Image Icon Attribute  
 Macintosh ..... 52  
 Windows ..... 23  
 ImageBrowser ..... 5, 10, 45  
 Index Print  
 Macintosh ..... 49  
 Windows ..... 20  
 Insert Text  
 Macintosh ..... 50  
 Windows ..... 21  
 Installer Panel  
 Macintosh ..... 43  
 Windows ..... 12  
 Installing Software  
 Macintosh ..... 43  
 Windows ..... 11

## K

Keyword  
 Macintosh ..... 56  
 Windows ..... 27



**L**

|                      |            |
|----------------------|------------|
| Last Acquired Images |            |
| Macintosh .....      | 47, 51, 52 |
| Windows .....        | 18, 22, 23 |
| Layout Print         |            |
| Macintosh .....      | 49         |

**M**

|                                    |        |
|------------------------------------|--------|
| Main Window .....                  | 22     |
| Memory Card Folder Structure ..... | 72     |
| Memory Card Reader                 |        |
| Macintosh .....                    | 48     |
| Windows .....                      | 18     |
| Merging Panoramic Images .....     | 7      |
| Macintosh .....                    | 64     |
| Windows .....                      | 35     |
| My Camera .....                    | 6      |
| Macintosh .....                    | 68     |
| Windows .....                      | 39     |
| My Camera Maker .....              | 41     |
| My Category                        |        |
| Macintosh .....                    | 47, 56 |
| Windows .....                      | 18, 27 |

**O**

|                                      |    |
|--------------------------------------|----|
| Operating the Shutter Remotely ..... | 6  |
| Macintosh .....                      | 61 |
| Windows .....                        | 32 |

**P**

|                          |        |
|--------------------------|--------|
| PDF Manuals .....        | 2      |
| PhotoStitch .....        | 7      |
| Macintosh .....          | 64     |
| Windows .....            | 35     |
| Playing Movies           |        |
| Macintosh .....          | 55     |
| Windows .....            | 26     |
| Print/Share button ..... | 17, 46 |
| Printing Images .....    | 5      |
| Macintosh .....          | 49     |
| Windows .....            | 20     |
| Properties Window .....  | 27     |

**R**

|                       |        |
|-----------------------|--------|
| RAW Image             |        |
| Macintosh .....       | 55, 65 |
| Windows .....         | 26, 36 |
| Remote Shooting ..... | 6      |
| Macintosh .....       | 61     |
| Windows .....         | 32     |

**S**

|                           |        |
|---------------------------|--------|
| Searching Images          |        |
| Macintosh .....           | 59     |
| Windows .....             | 29     |
| Shooting Date/Time        |        |
| Macintosh .....           | 50     |
| Windows .....             | 21     |
| Shooting Information      |        |
| Macintosh .....           | 56     |
| Windows .....             | 27     |
| Star Rating               |        |
| Macintosh .....           | 55, 56 |
| Windows .....             | 26, 27 |
| Start Screen              |        |
| Macintosh .....           | 47     |
| Windows .....             | 17     |
| Stitch Assist Mode        |        |
| Macintosh .....           | 64     |
| Windows .....             | 35     |
| System Requirements ..... | 9      |

**T**

|                       |                |
|-----------------------|----------------|
| Task Buttons .....    | 22, 23, 28, 29 |
| Thumbnail             |                |
| Macintosh .....       | 47             |
| Windows .....         | 18             |
| Thumbnail Window      |                |
| Macintosh .....       | 46, 47, 61, 68 |
| Windows .....         | 16, 17, 32, 39 |
| Troubleshooting ..... | 73             |

**U**

|                             |    |
|-----------------------------|----|
| Uninstalling Software ..... | 71 |
|-----------------------------|----|

---

## V

---

|                 |                |
|-----------------|----------------|
| View Window     |                |
| Macintosh ..... | 46, 47, 61, 68 |
| Windows .....   | 16, 17, 32, 39 |
| Viewer Window   |                |
| Macintosh ..... | 55             |
| Windows .....   | 26             |

---

## Z

---

|                     |           |
|---------------------|-----------|
| ZoomBrowser EX..... | 5, 10, 15 |
| Ver. 2/3 .....      | 10        |

**Canon**