

Canon

PIXMA TR7500 series

Getting Started

Read **Safety and Important Information**
(addendum) first.



QT62026V01

1



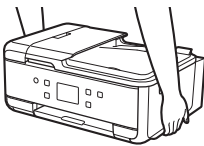
Installing the Printer.....page 1

2



Connecting with Computer and Smartphone/Tablet.....page 4

How to Hold Printer



Explanatory Movies



<http://ij.start.canon>



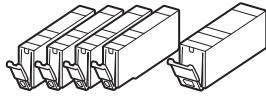
3.XXXXXXXXXXXXXXX



1. Checking Included Items



□ Power cord



□ Ink tanks for setup



□ Setup CD-ROM for Windows PC



□ Modular cable

□ Safety and Important Information

□ Getting Started (this manual)

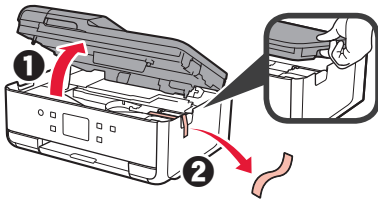
2. Removing Packing Materials / Turning on Printer



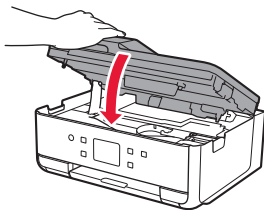
- 1 Remove the packing materials (such as orange tape and protective film on the touch screen) from outside the printer.

Using the printer with the protective film attached may cause malfunction.

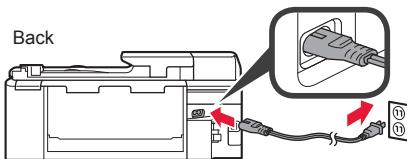
- 2
 - 1 Hook the hollows on the both sides of the printer with your fingers and open the scanning unit / cover.
 - 2 Remove the orange tape.



- 3 Close the scanning unit / cover.

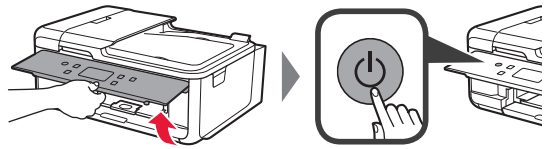


- 4 Connect the power cord diagonally from the back.

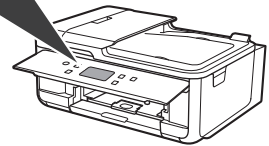
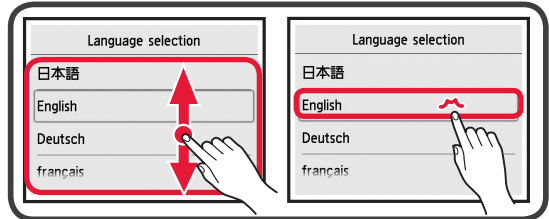


Do not connect any cables except the power cord yet.

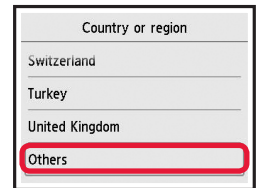
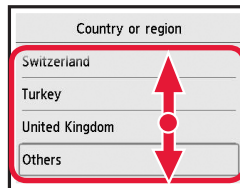
- 5 Lift the operation panel and press the **ON** button.



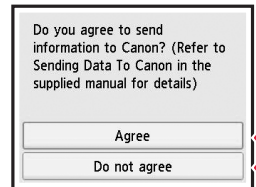
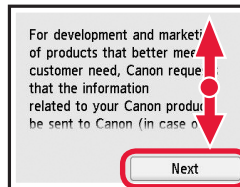
- 6 Drag the screen and tap the language to select.



- 7 If the following screen appears, tap your country or region to select.

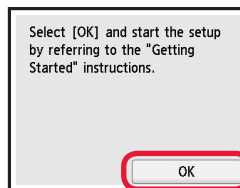


- 8 Read the messages and follow the on-screen instructions.



For details about information that is sent to Canon, refer to "Sending Data To Canon" in **Safety and Important Information**.

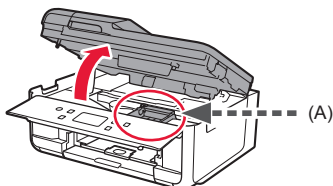
- 9 Select **OK**.



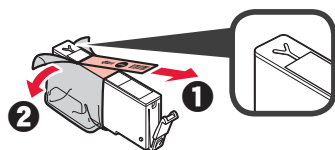
3. Installing Ink Tank



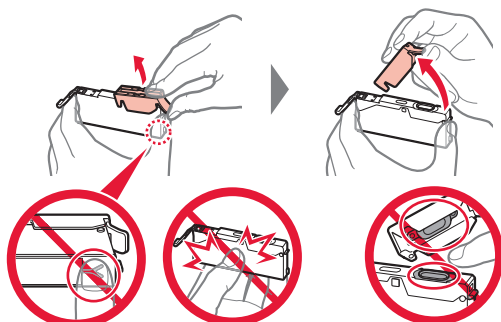
- 1 Open the scanning unit / cover.
⊘ Do not touch the print head holder (A) until it stops.



- 2 ① COMPLETELY remove the orange tape.
② Remove the protective wrap.



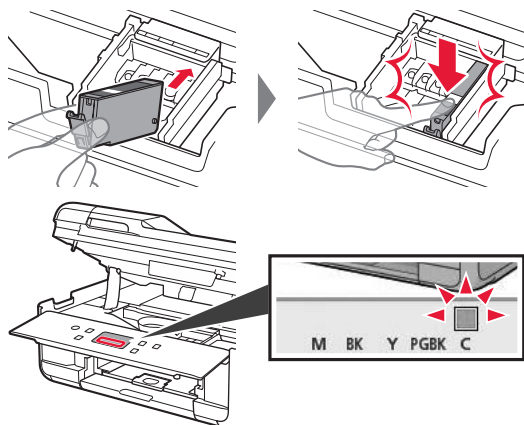
- 3 Hook the orange cap with your finger to remove it GENTLY.



Do not push the both sides of the ink tank with the Y-shape air hole blocked.

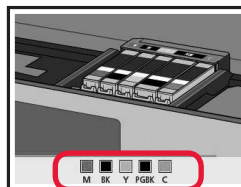
Do not touch.

- 4 Insert the ink tank into the print head and push it down firmly until it snaps into place.
The color of the ink tank that you set appears on screen.

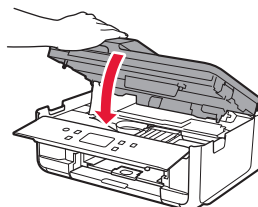


If the color is not displayed on the screen even though you have installed the ink tank, the color of the ink tank may be wrong or you may have installed an ink tank, such as one with a different model number, that is not supported by this printer. Either install an ink tank for the correct color or use the provided ink tank for setup.

- 5 Install all the ink tanks the same way as in step 4, and then confirm that all the colors appear on screen.



- 6 Close the scanning unit / cover.



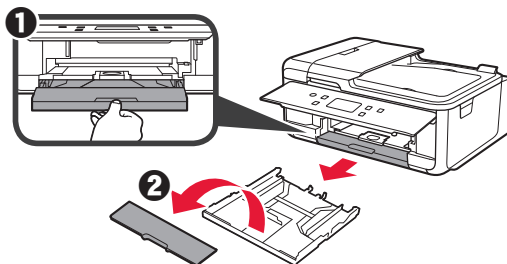
If an error message appears on the screen, make sure the ink tanks are installed correctly.

4. Loading Paper / Aligning Print Head

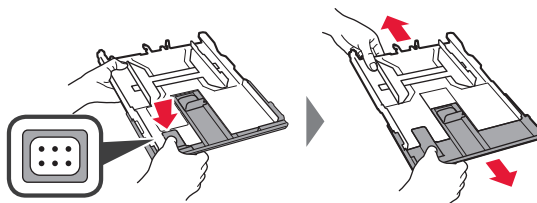


To obtain a better print result, print a pattern for Print Head Alignment and scan it.

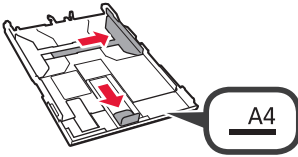
- 1 ① Pull out the cassette.
② Remove the cassette cover.



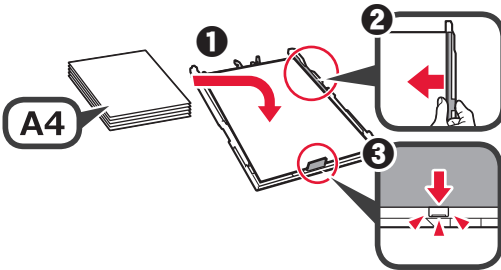
- 2 While pressing on the lock of the cassette, extend the cassette.



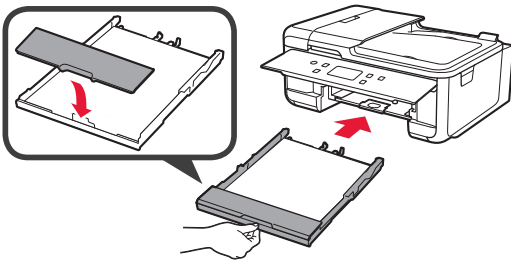
- 3 Open the paper guides, and then align the guide in front with the mark of A4.



- 4
- 1 Load plain A4 size paper with the print side facing down.
 - 2 Slide the right paper guide to align it with the side of the paper stack.
 - 3 Align the paper stack with the paper guide in front.

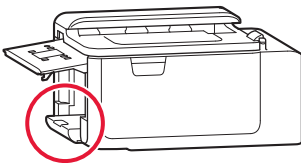


- 5 Attach the cassette cover and insert the cassette.

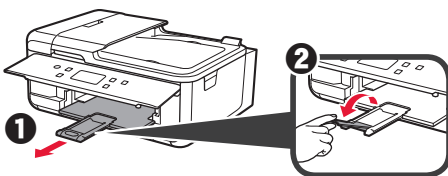


The following figure shows the state after the cassette is inserted.

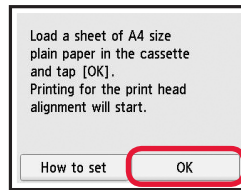
Side



- 6
- 1 Pull out the paper output tray.
 - 2 Open the output tray extension.

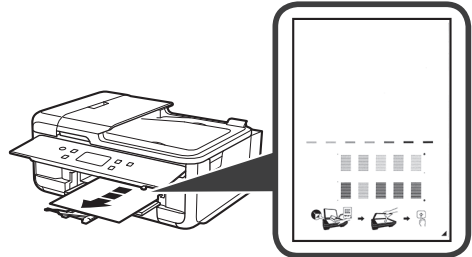


- 7 If the following screen appears, select **OK**.

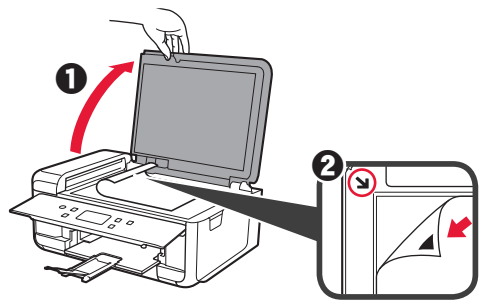


- 8 Make sure that a pattern is printed for Print Head Alignment.

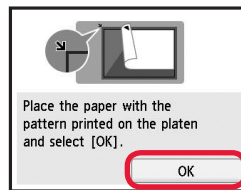
It takes about 2 minutes to finish printing.



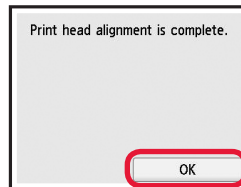
- 9
- 1 Open the document cover.
 - 2 Load the printed pattern on the platen glass.



- 10 After closing the document cover, select **OK**.



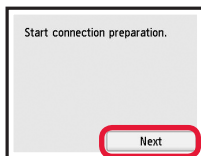
- 11 If the following screen appears, select **OK**.



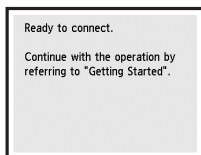
5. Preparing for Connection

In the following description, smartphones and tablet devices are collectively described as smartphone.

1 Select **Next**.



2 Make sure that the following screen appears.

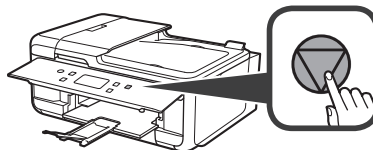


From here on, proceed to a step according to how you use the printer.

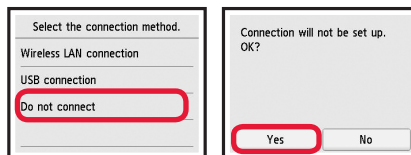
- **To use the printer by connecting only to a computer or both to a computer and smartphone**
➔ "6-A. Connecting to Computer"
- **To use the printer by connecting only to a smartphone**
➔ "6-B. Connecting to Smartphone" on page 6
- **To use the printer without connecting to a computer or smartphone**
➔ "Use Only Printer"

Use Only Printer

- 1 Press the **Stop** button on the printer.



- 2 Select **Do not connect** > **Yes** in this order.



The setup is now complete.

To continue fax setup, proceed to page 8.

6-A. Connecting to Computer



You need a connection setup for each computer. Proceed with the setup from step 1 for each computer.

- 1 Start the setup file for either method **A** or method **B**.

A Downloading from the Internet

- 1 Open a web browser (e.g., etc.) on your computer.

- 2 Input the following URL and access the Canon website.

<http://ij.start.canon>



- 3 Select **Set Up**.



- 4 Input the model name of your printer and click **OK**.



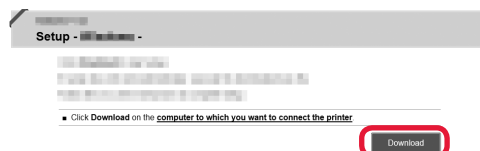
You can select a model name from the list.

- 5 Click **Setup**.



The procedures for Windows and Mac OS are shown below. If you are using a computer with an OS other than Windows or Mac OS, such as a Chrome OS, do the setup according to the on-screen instructions.

- 6 Click **Download** and download the setup file.



- 7 Execute the downloaded file.

Proceed to step **2** on the next page to continue.

B Using Setup CD-ROM (Windows Only)

- 1 Load the Setup CD-ROM in your computer.

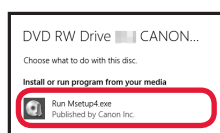


- When using Windows 10 or Windows 8.1:

- 2 When the following message appears on the right side of your computer screen, click it.



- 3 If the following screen appears, click **Run Msetup4.exe**.



- 4 If the **User Account Control** dialog box appears, click **Yes**.

When This Message Does Not Appear (or Has Disappeared)

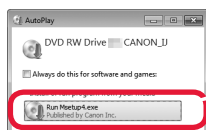
1. Click **File Explorer** on the taskbar.



2. Click **This PC** on the left side of the opened window.
3. Double-click the CD-ROM icon on the right side of the window. If the contents of the CD-ROM appear, double-click **Msetup4.exe**.
4. Proceed to step 4.

- When using Windows 7:

- 2 When the **AutoPlay** screen appears, click **Run Msetup4.exe**.



- 3 If the **User Account Control** dialog box appears, click **Continue**.

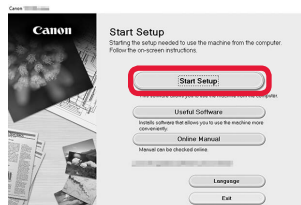
When **AutoPlay** Screen Does Not Appear

1. Click **Computer** from the start menu.
2. Double-click the CD-ROM icon on the right side of the opened window. If the contents of the CD-ROM appear, double-click **Msetup4.exe**.

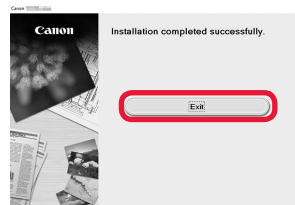
Proceed to step 2 to continue.

- 2 Click **Start Setup**.

If the following screen appears, click **Exit**.



Follow the on-screen instructions to proceed with the setup.



The connection with your computer is now complete. You can print from your computer.

To continue fax setup, proceed to page 8.

6-B. Connecting to Smartphone



You need a connection setup for each smartphone. Proceed with the setup from step 1 for each smartphone.

Preparation

- Turn on Wi-Fi on your smartphone.
- If you have a wireless router, connect your smartphone to the wireless router you want to connect to the printer.
- * For operations, refer to manuals of your smartphone and the wireless router or contact those manufacturers.

1 Install the application software Canon PRINT Inkjet/SELPHY in your smartphone.



iOS : Search "Canon PRINT" in App Store.

Android : Search "Canon PRINT" in Google Play.

Or access the Canon website by scanning the QR code.

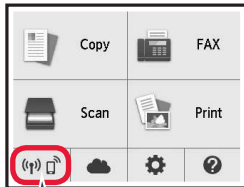


- * You may not connect your smartphone to the Internet wirelessly during connecting the printer to the smartphone directly. In that case, you may be charged depending on the contract with your service provider.
- * Up to 5 devices can be connected to the printer via wireless LAN connection directly.

2 Check the display on the printer.

The screen turns off when no operation is made for about 10 minutes. Press one of the buttons on the operation panel (except for the **ON** button) to display the screen.

- If the following screen appears:
Check the icon on the lower left, and then proceed to **A** or **B**.

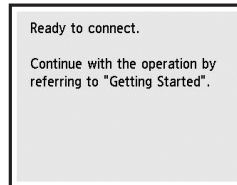


The following icon appears.
(The printer is connected to a network.)




YES

- If the following screen appears:
Proceed to **B**.



No (Proceed to **B**.)

If  appears, the printer cannot communicate by wireless LAN connection. For details, access "<http://ij.start.canon>" to see **Frequently Asked Questions**.

A **iOS** **Android**

- 1 Tap the installed application software.



- 2 Follow the on-screen instructions to register the printer.
- 3 Make sure that the right screen appears.



The connection with your smartphone is now complete. You can print from your smartphone.

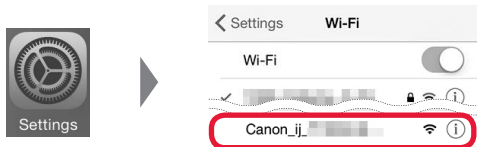
To print photos, load photo paper. Proceed to "Loading Photo Paper" on page 8.

To continue fax setup, proceed to page 8.

B Procedures below vary depending on iOS or Android. Select your operating system and proceed to its procedure.

iOS

- 1 Tap **Settings** on your smartphone's home screen, and tap **Canon_ij_XXXX** in the Wi-Fi settings.



If **Canon_ij_XXXX** does not appear on the list, see "Preparation for Printer" below to operate the printer, and then repeat step 1.

- 2 Tap the installed application software.

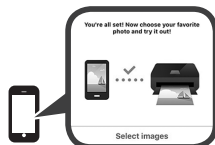


- 3 Follow the on-screen instructions to register the printer.

Follow the on-screen instructions to proceed with the setup.

If you select **Auto Select Conn. Method (recommended)** on the connection method selecting screen, the appropriate connection method is selected automatically depending on your environment.

- 4 Make sure that the right screen appears.



Android

- 1 Tap the installed application software.



- 2 Follow the on-screen instructions to register the printer.

If a message saying "**Printer is not registered. Perform printer setup?**" does not appear, see "Preparation for Printer" below to operate the printer, and then wait for a while until the message appears.

Follow the on-screen instructions to proceed with the setup.

- The appropriate connection method is selected depending on your environment.
- If two printer names appear on the **Register Printer** screen as shown below, select A.
A) TR7500 series (xxx.xxx.xxx.xxx)
B) Direct-xxxx-TR7500series

- 3 Make sure that the right screen appears.



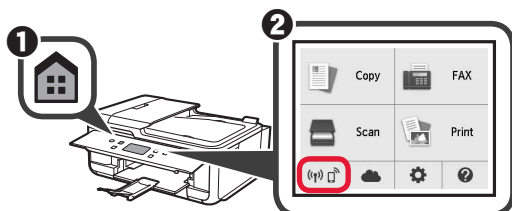
The connection with your smartphone is now complete. You can print from your smartphone.

To print photos, load photo paper. Proceed to "Loading Photo Paper" on page 8.

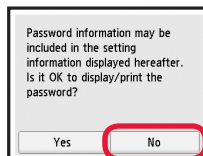
To continue fax setup, proceed to page 8.

Preparation for Printer

- 1 Press the **HOME** button on the printer.
- 2 Select the icon on the lower left of the HOME screen.



- 3 If the following screen appears, select **No**.

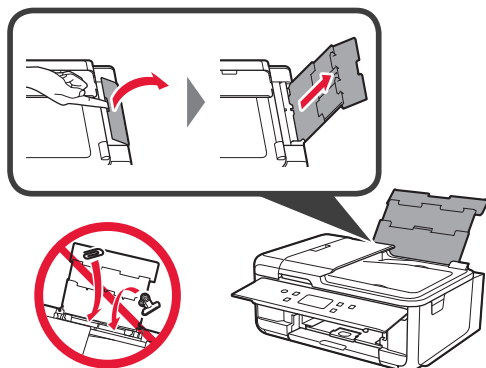


- 4 Select **LAN settings > Wireless LAN > Wireless LAN setup > Easy wireless connect** in this order.
- 5 Select **Yes**.
- 6 Return to the operation of your smartphone.

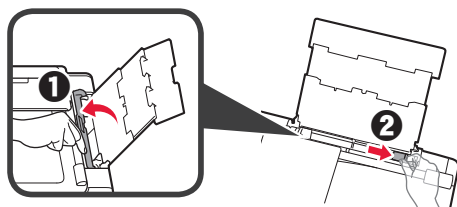
Loading Photo Paper

Load photo paper in the rear tray.

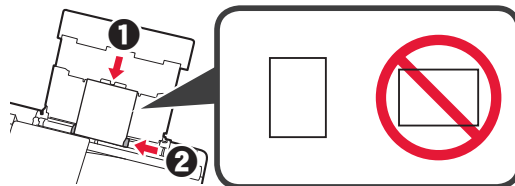
- 1 Open the rear tray cover and pull out the paper support.



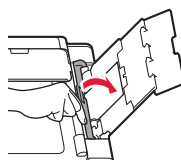
- 2
 - 1 Open the feed slot cover.
 - 2 Slide the right paper guide to the end.



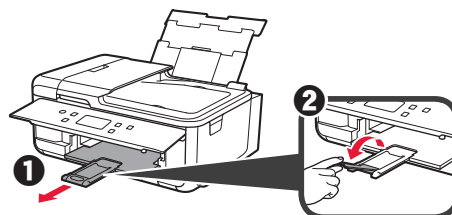
- 3
 - 1 Load several sheets of photo paper with the print side facing up.
 - 2 Slide the right paper guide to align it with the side of the paper stack.



- 4 Close the feed slot cover.
Read the message on the printer's screen and register the information of the loaded paper.



- 5
 - 1 Pull out the paper output tray.
 - 2 Open the output tray extension.



Using Fax Function

Before using the fax function, refer to **Setting Up the FAX** to set up the fax function of your printer. You can refer to **Setting Up the FAX** by either of the following methods.

- Opening from the website

- 1 Access the Canon website.

<http://ij.start.canon>



- 2 Select **Set Up**.



- 3 When the screen for selecting a model appears, input the model name of your printer.

- 4 Select **Making Fax Ready for Use**.



- Opening from the manual installed into your computer

The following is an example using Windows 10.

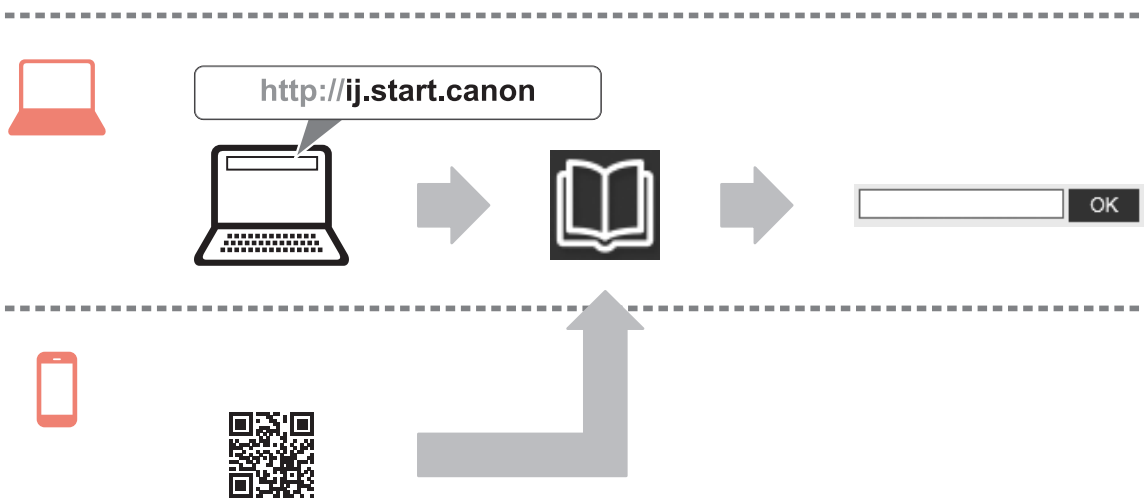
- 1 Click the **Start** button.
- 2 Click **All apps > Canon TR7500 series On-screen Manual** in this order, and then open the **Basic Manual**.
- 3 Select **Setting Up the FAX**.





Access Online Manual

From Web site



From desktop shortcut

