

Canon

PIXMA G1010 series

Mari Memulai Getting Started

Baca **Keamanan dan Informasi Penting**
(lampiran) terlebih dahulu.

Read **Safety and Important Information**
(addendum) first.



QT62282V02

1



Memasang Pencetak.....halaman 1

Installing the Printer.....page 1

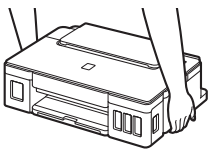
2



Menghubungkan dengan Komputerhalaman 4

Connecting with Computerpage 4

Cara Memegang
Pencetak
How to Hold Printer



Video Penjelasan

Explanatory Movies



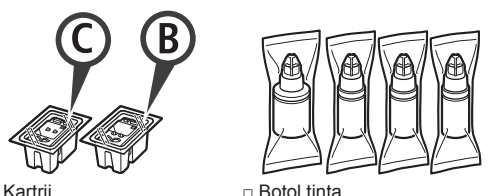
<http://ij.start.canon>



3.XXXXXXXXXXXXXXX



1. Memeriksa Item yang Tersedia

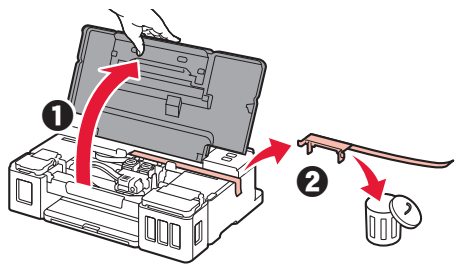


- Kartrij
- Kabel listrik
- Setup CD-ROM untuk PC Windows
- Keamanan dan Informasi Penting
- Mari Memulai (petunjuk ini)

2. Melepaskan Material Kemasan



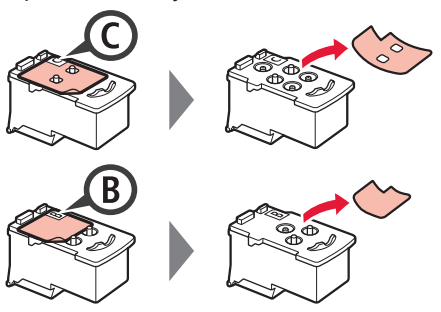
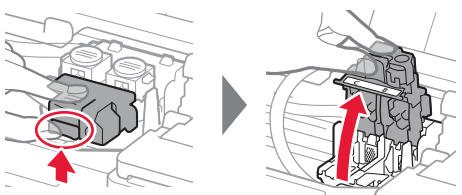
- 1 Lepaskan material kemasan (misalnya pita oranye) dari bagian luar pencetak.
- 2
 - ❶ Buka penutup atas.
 - ❷ Lepaskan pita oranye dan material pelindung kemudian buang.



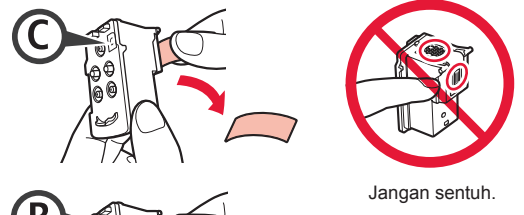
3. Memasang Kartrij



- 1 Buka penutup pengunci kartrij.
- 2 Keluarkan setiap kartrij dari dalam kemasan dan lepaskan labelnya.



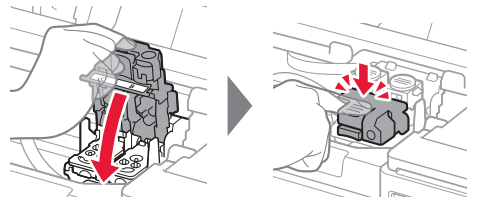
- 3 Lepaskan pita pelindung.



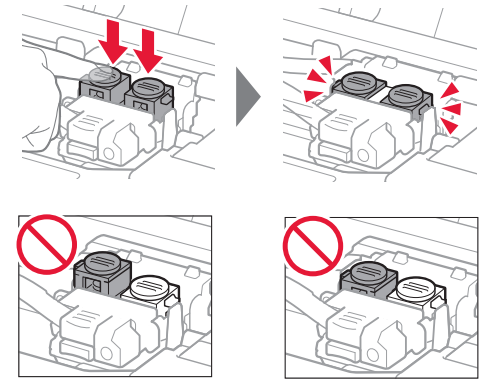
- 4 Masukkan kartrij C (warna) pada sebelah kiri dan kartrij B (hitam) pada sebelah kanan.



- 5 Tutup penutup pengunci kartrij dan tekan ke bawah.



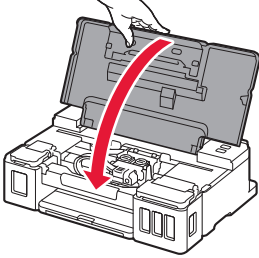
- 6 Tekan kedua tombol sambungan sepenuhnya.



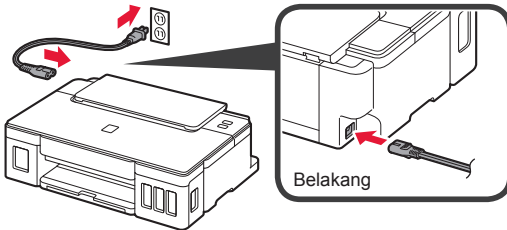
4. Menyalakan Pencetak



- 1 Tutup penutup atas.

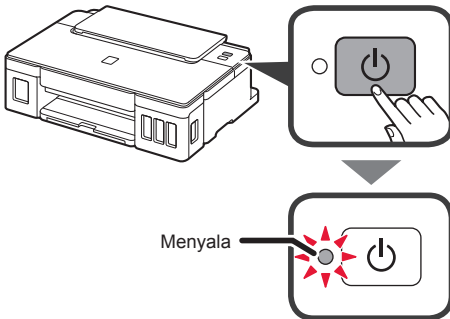


- 2 Hubungkan kabel listrik.

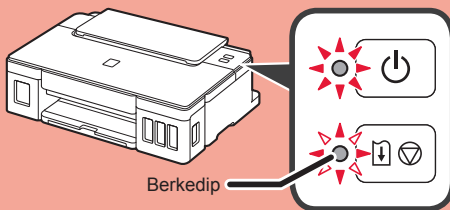


Jangan hubungkan kabel apa pun selain kabel listrik terlebih dahulu.

- 3 Tekan tombol **DAYA**.



Jika lampu **Alarm** berkedip, rujuk ke "Ketika lampu berkedip" pada halaman 3 untuk mengatasi kesalahan.

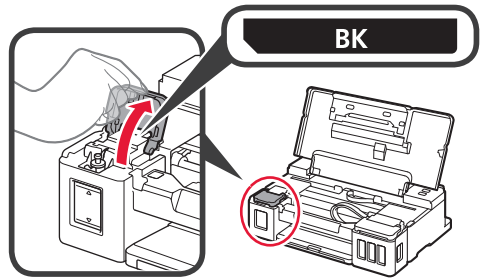


5. Menuang Tinta

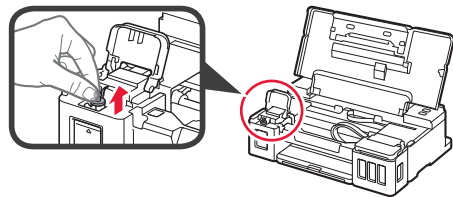


Produk ini membutuhkan penanganan tinta yang seksama. Tinta mungkin terpercik ketika kotak tinta diisi. Jika tinta menodai pakaian Anda atau benda lain, mungkin tidak akan dapat dibersihkan.

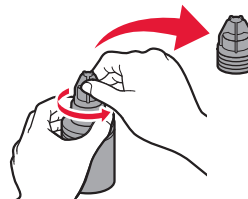
- 1 Buka penutup atas.
- 2 Buka penutup unit kotak tinta.



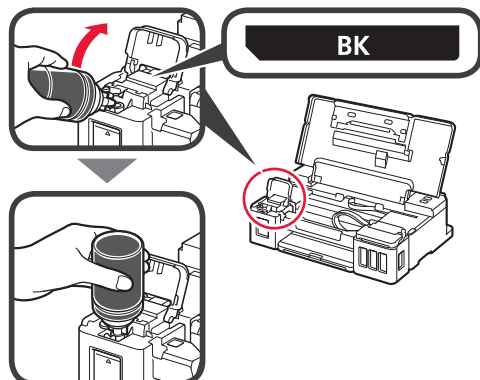
- 3 Pegang dan lepaskan penutup kotak dari kotak tinta.



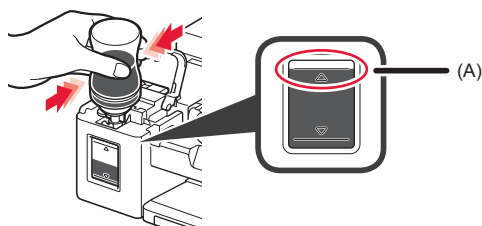
- 4 Pegang botol tinta dengan tegak dan lepaskan penutup botol.



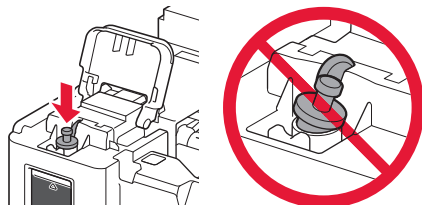
- 5 Masukkan mulut botol tinta ke dalam lubang pengisian dan balik botol tinta menghadap ke bawah.



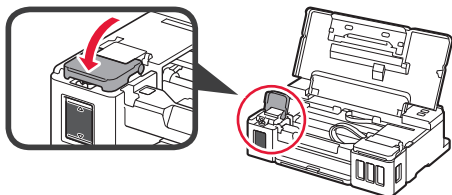
- 6 Tuangkan semua tinta ke dalam kotak tinta. Pastikan bahwa tinta telah diisi sampai garis batas atas (A).



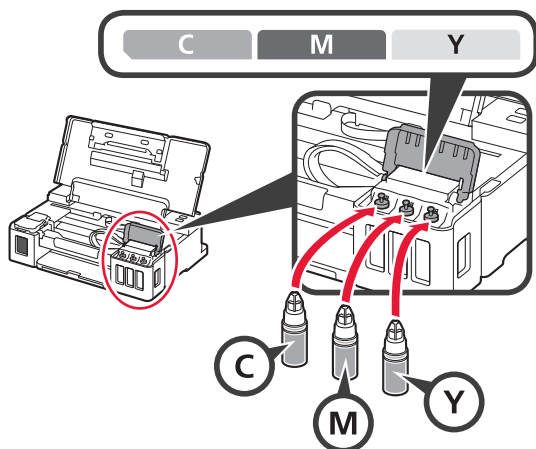
- 7 Pasang kembali penutup kotak dengan hati-hati.



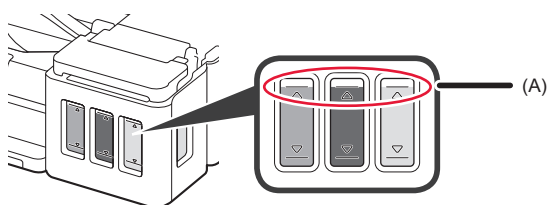
- 8 Tutup penutup unit kotak tinta.



- 9 Ulangi langkah 2 sampai 8 untuk menuang semua tinta ke kotak tinta yang sesuai pada sebelah kanan menurut labelnya.



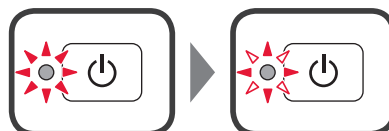
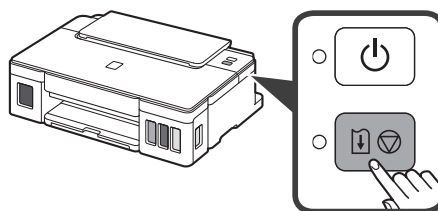
Pastikan bahwa tinta telah diisi sampai garis batas atas (A).



- 10 Tutup penutup atas.

6. Menyiapkan Sistem Tinta

- 1 Tekan tombol **RESUME/CANCEL**, kemudian pastikan bahwa lampu **DAYA** telah berubah dari menyala ke berkedip.



Penyiapan tinta membutuhkan waktu sekitar 5 sampai 6 menit. Lanjutkan ke halaman berikutnya.

? Ketika lampu berkedip

Lampu Alarm berkedip



Hitung jumlah kedipan untuk menentukan penyebab masalah.

- 4 kali
Kartrij tidak terpasang dengan benar.
➔ "3. Memasang Kartrij" pada halaman 1
- 5 kali
Tidak ada kartrij yang dipasang.
➔ "3. Memasang Kartrij" pada halaman 1
- 9 kali
Material pelindung tidak dilepas.
➔ "2. Melepaskan Material Kemasan" pada halaman 1

Lampu DAYA berkedip



Menyiapkan sistem tinta. Ini mungkin membutuhkan waktu sekitar 5 sampai 6 menit. Lanjutkan ke halaman berikutnya.

Lampu DAYA dan lampu Alarm berkedip bergantian 8 kali

Tinta tidak disiapkan dengan normal. Tekan tombol **DAYA** untuk menyalakan ulang pencetak, kemudian ulangi prosedur mulai "5. Menuang Tinta" pada halaman 2.

Untuk segala kasus lainnya, rujuk ke **Petunjuk Daring**.

7. Menghubungkan ke Komputer

Windows



Anda perlu melakukan pengesetan koneksi untuk setiap komputer. Lanjutkan dengan pengesetan dari langkah 1 untuk setiap komputer.

1 Jalankan berkas pengesetan baik untuk metode **A** maupun metode **B**.

A Mengunduh dari Internet

- 1 Buka browser web (dll.) pada komputer Anda.
- 2 Masukkan URL berikut ini dan akses situs web Canon.

`http://ij.start.canon`



- 3 Pilih **Mengeset**.



- 4 Masukkan nama model pencetak Anda dan klik **OK**.



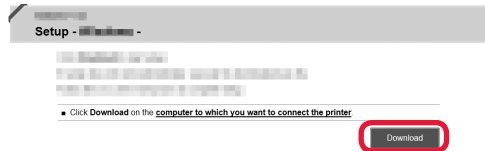
Anda dapat memilih nama model dari daftar.

- 5 Klik **Pengesetan**.



Prosedur untuk Windows ditunjukkan di bawah ini. Jika Anda menggunakan komputer dengan OS selain Windows, lakukan pengesetan berdasarkan instruksi pada layar.

- 6 Klik **Unduh** dan unduh berkas pengesetan.



- 7 Jalankan berkas yang diunduh.

Lanjutkan ke langkah 2 pada halaman berikutnya untuk meneruskan.

B Menggunakan Setup CD-ROM (Hanya Windows)

■ Ketika menggunakan Windows 10 atau Windows 8.1:

- 1 Masukkan Setup CD-ROM ke komputer Anda.



- 2 Ketika pesan berikut ini muncul pada sisi kanan layar komputer Anda, klik pesan tersebut.



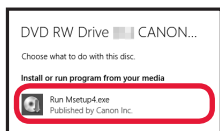
Ketika Pesan Ini Tidak Muncul (atau Telah Menghilang)

1. Klik **File Explorer** pada taskbar.



2. Klik **PC ini(This PC)** pada sisi kiri jendela yang terbuka.
3. Klik dua kali ikon CD-ROM pada sisi kanan jendela. Jika isi CD-ROM muncul, klik dua kali **Msetup4.exe**.
4. Lanjutkan ke langkah 4.

3 Jika layar berikut ini muncul, klik **Jalankan Msetup4.exe(Run Msetup4.exe)**.



4 Jika kotak dialog **Kontrol Akun Pengguna(User Account Control)** muncul, klik **Ya(Yes)**.

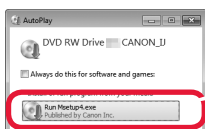
Lanjutkan ke langkah 2 untuk meneruskan.


■ **Ketika menggunakan Windows 7:**

1 Masukkan Setup CD-ROM ke komputer Anda.



2 Ketika layar **AutoMain(AutoPlay)** muncul, klik **Jalankan Msetup4.exe(Run Msetup4.exe)**.

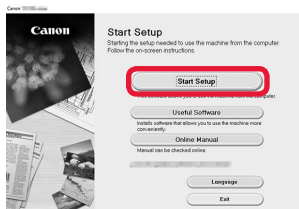


Ketika Layar **AutoMain(AutoPlay)** Tidak Muncul
 1. Klik **Komputer(Computer)** dari menu mulai.
 2. Klik dua kali ikon  CD-ROM pada sisi kanan jendela yang terbuka.
 Jika isi CD-ROM muncul, klik dua kali **Msetup4.exe**.

3 Jika kotak dialog **Kontrol Akun Pengguna(User Account Control)** muncul, klik **Lanjutkan(Continue)**.

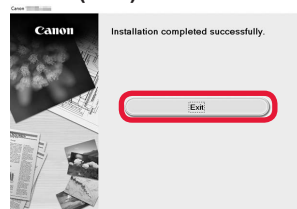
Lanjutkan ke langkah 2 untuk meneruskan.

2 **Klik Mulai Pengesetan(Start Setup).**



Ikuti instruksi pada layar untuk melanjutkan pengesetan.

Jika layar berikut ini muncul, klik **Keluar(Exit)**.

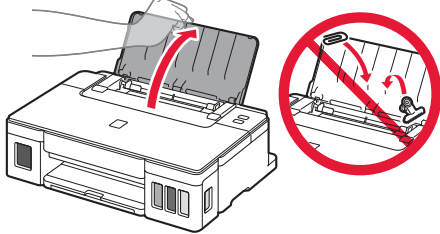


Pengesetan selesai ketika lampu DAYA pada pencetak berhenti berkedip dan tetap menyala. Anda dapat mencetak dari komputer.

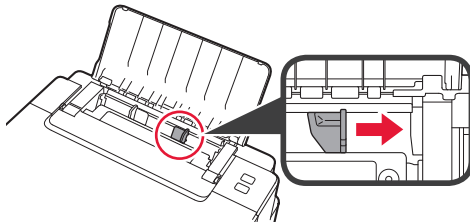
Memuatkan Kertas



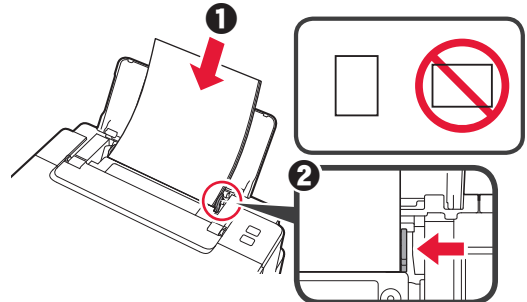
- 1 Buka pendukung kertas.



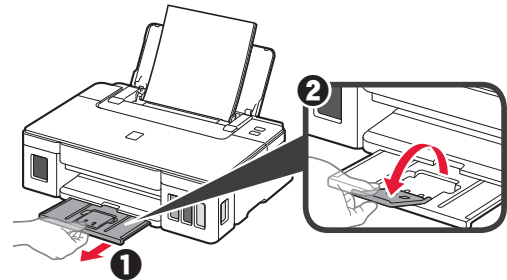
- 2 Geser pemandu kertas kanan ke ujung.



- 3 1 Muatkan kertas dengan sisi cetak menghadap ke atas.
2 Geser pemandu kertas sebelah kanan untuk mengepaskannya dengan sisi tumpukan kertas.



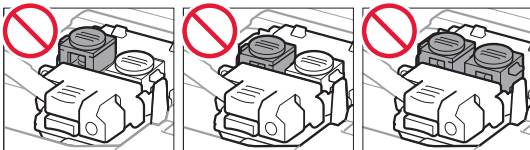
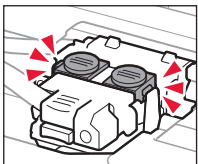
- 4 1 Tarik keluar tatakan keluaran kertas.
2 Buka perpanjangan tatakan keluaran.



Memindahkan Pencetak Anda

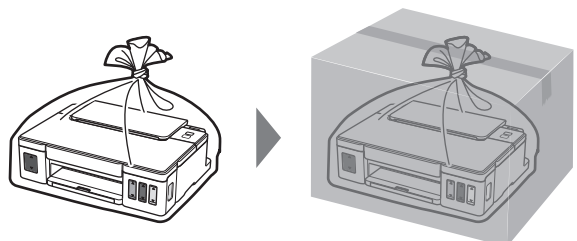
Ketika memindahkan pencetak, pastikan hal-hal berikut ini. Rujuk ke **Petunjuk Daring** untuk detail.

Periksa apakah semua tombol sambungan telah ditekan ke bawah sepenuhnya untuk menghindari kebocoran tinta.

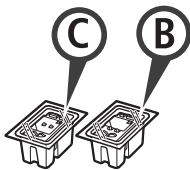


Kemas pencetak dalam kantong plastik untuk mengantisipasi jika tinta bocor.

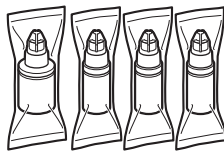
- Kemas pencetak dalam kotak yang kokoh sehingga mesin ditempatkan dengan bagian alas menghadap ke bawah, menggunakan material pelindung yang memadai untuk memastikan pemindahan aman.
- Jangan miringkan pencetak. Tinta mungkin bocor.
- Harap tangani dengan hati-hati dan pastikan kotak tetap rata dan JANGAN balikkan ke bawah atau ke samping, karena pencetak mungkin rusak dan tinta dalam pencetak mungkin bocor.
- Ketika ekspeditor menangani pemindahan pencetak, pastikan kotak ditandai "SISI INI MENGHADAP KE ATAS" untuk memastikan pencetak dengan bagian alasnya menghadap ke bawah. Tandai juga dengan "MUDAH PECAH" atau "TANGANI DENGAN HATI-HATI".



1. Checking Included Items



□ Cartridge



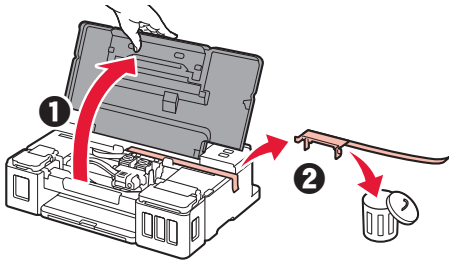
□ Ink bottle

- Power cord
- Setup CD-ROM for Windows PC
- Safety and Important Information
- Getting Started (this manual)

2. Removing Packing Materials



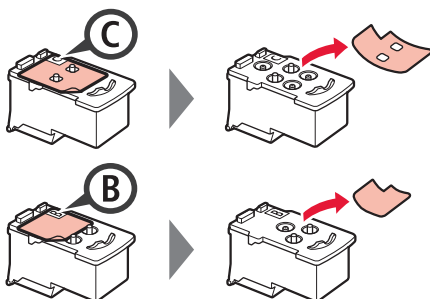
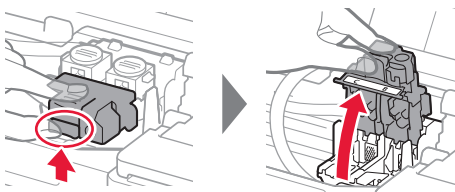
- 1 Remove the packing materials (such as orange tape) from outside the printer.
- 2
 - 1 Open the top cover.
 - 2 Remove the orange tape and the protective material and discard them.



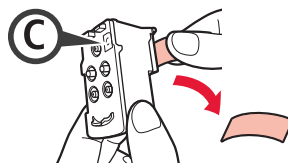
3. Installing the Cartridge



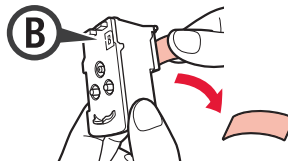
- 1 Open the cartridge locking cover.
- 2 Take out each cartridge from the package and remove the label.



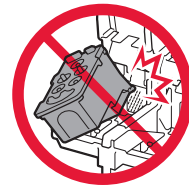
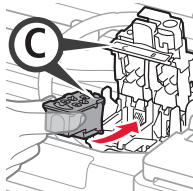
- 3 Remove the protective tape.



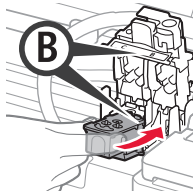
Do not touch.



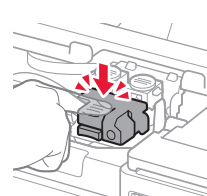
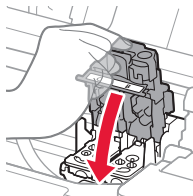
- 4 Insert the C (color) cartridge on the left and the B (black) cartridge on the right.



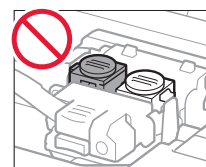
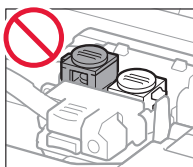
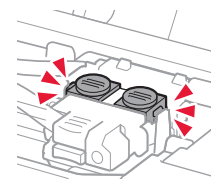
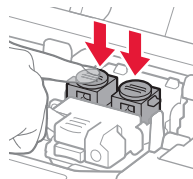
Do not bump it against the surrounding parts.



- 5 Close the cartridge locking cover and push it down.



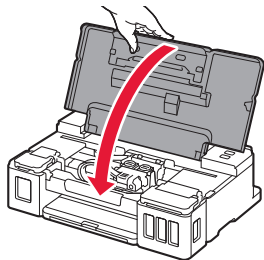
- 6 Press down both joint buttons completely.



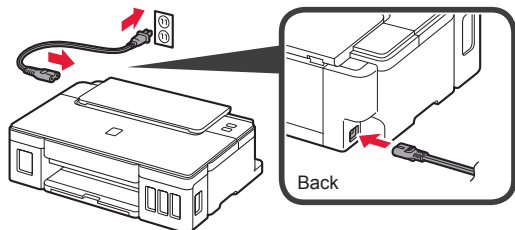
4. Turning on Printer



- 1 Close the top cover.

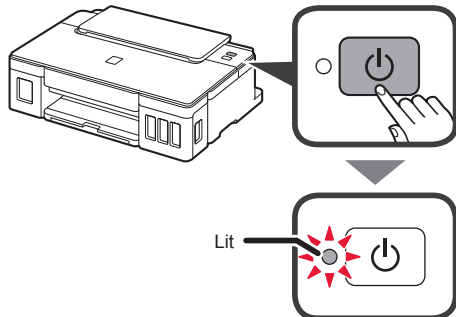


- 2 Connect the power cord.

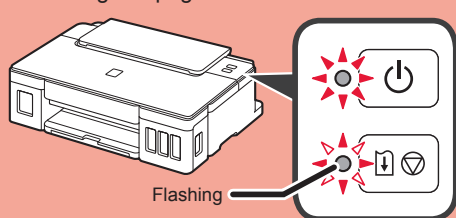


Do not connect any cables except the power cord yet.

- 3 Press the **ON** button.



If the **Alarm** lamp is flashing, refer to "When a lamp is flashing" on page 3 to resolve the error.

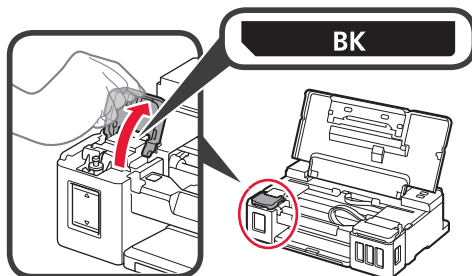


5. Pouring Ink

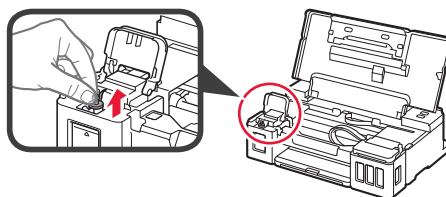


This product requires careful handling of ink. Ink may splatter when the ink tanks are filled with ink. If ink gets on your clothes or belongings, it may not come off.

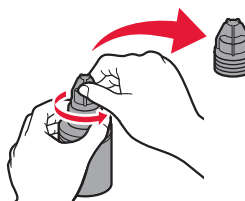
- 1 Open the top cover.
- 2 Open the ink tank cover.



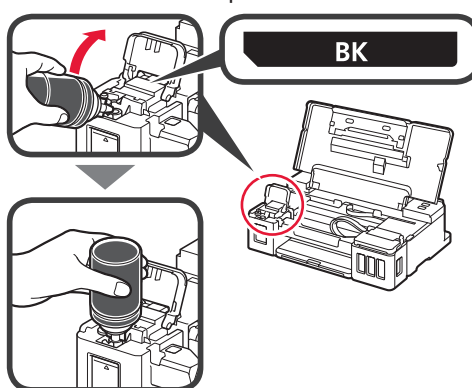
- 3 Grab and remove the tank cap of the ink tank.



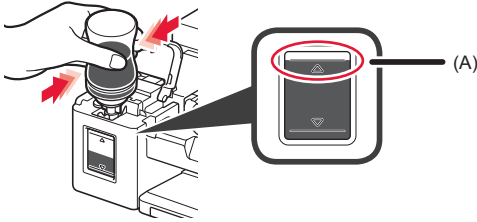
- 4 Hold the ink bottle upright and remove the bottle cap.



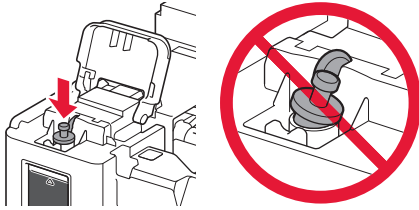
- 5 Insert the nozzle of the ink bottle into the inlet and stand the ink bottle upside down.



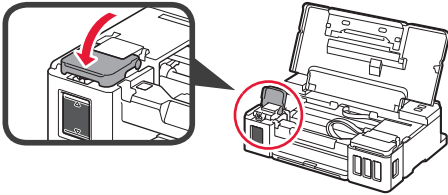
- 6 Pour all ink into the ink tank.
Confirm that the ink has been filled to the upper limit line (A).



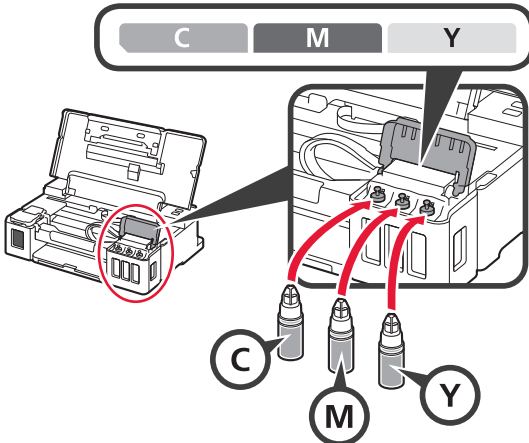
- 7 Replace the tank cap securely.



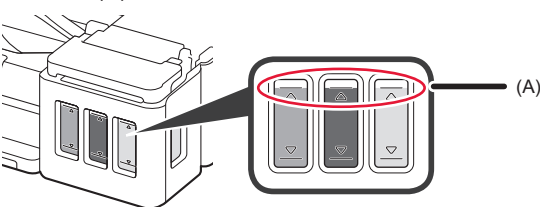
- 8 Close the ink tank cover.



- 9 Repeat steps 2 to 8 to pour all ink into the corresponding ink tanks on the right according to the label.



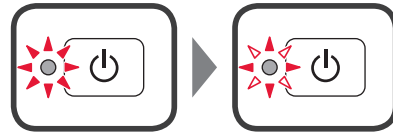
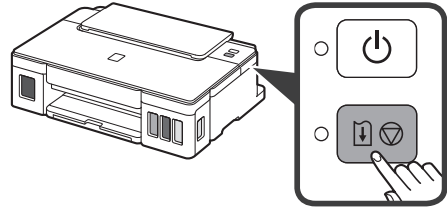
Confirm that the ink has been filled to the upper limit line (A).



- 10 Close the top cover.

6. Preparing the Ink System

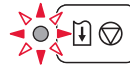
- 1 Press the **RESUME/CANCEL** button, and then confirm that the **ON** lamp has changed from lit to flashing.



Ink preparation takes about 5 to 6 minutes.
Proceed to the next page.

? When a lamp is flashing

The Alarm lamp is flashing



Count the number of flashes to determine the cause of the problem.

- 4 times
The cartridges are not installed correctly.
→ "3. Installing the Cartridge" on page 1
- 5 times
No cartridges are installed.
→ "3. Installing the Cartridge" on page 1
- 9 times
The protective materials are not removed.
→ "2. Removing Packing Materials" on page 1

The ON lamp is flashing



Preparing the ink system. This may take about 5 to 6 minutes. Proceed to the next page.

The ON lamp and Alarm lamp flash alternately 8 times

Ink is not prepared normally.

Press the **ON** button to restart the printer, and then redo the procedure from "5. Pouring Ink" on page 2.

For all other cases, refer to the **Online Manual**.

7. Connecting to Computer

Windows



You need a connection setup for each computer. Proceed with the setup from step 1 for each computer.

- 1 Start the setup file for either method **A** or method **B**.

A Downloading from the Internet

- 1 Open a web browser (e.g. etc.) on your computer.
- 2 Input the following URL and access the Canon website.

<http://ij.start.canon>



- 3 Select **Set Up**.



- 4 Input the model name of your printer and click **OK**.



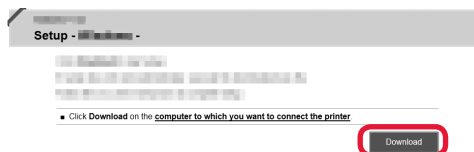
You can select a model name from the list.

- 5 Click **Setup**.



The procedures for Windows are shown below. If you are using a computer with an OS other than Windows, do the setup according to the on-screen instructions.

- 6 Click **Download** and download the setup file.



- 7 Execute the downloaded file.

Proceed to step 2 on the next page to continue.

B Using Setup CD-ROM (Windows Only)

■ When using Windows 10 or Windows 8.1:

- 1 Load the Setup CD-ROM in your computer.



- 2 When the following message appears on the right side of your computer screen, click it.



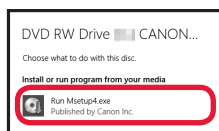
When This Message Does Not Appear (or Has Disappeared)

1. Click **File Explorer** on the taskbar.



2. Click **This PC** on the left side of the opened window.
3. Double-click the **CD-ROM** icon on the right side of the window.
If the contents of the CD-ROM appear, double-click **Msetup4.exe**.
4. Proceed to step **4**.

- ③ If the following screen appears, click **Run Msetup4.exe**.



- ④ If the **User Account Control** dialog box appears, click **Yes**.

Proceed to step 2 to continue.

■ When using Windows 7:

- ① Load the Setup CD-ROM in your computer.



- ② When the **AutoPlay** screen appears, click **Run Msetup4.exe**.



When **AutoPlay** Screen Does Not Appear

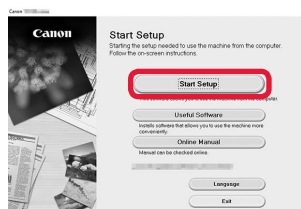
1. Click **Computer** from the start menu.
2. Double-click the CD-ROM icon on the right side of the opened window.
If the contents of the CD-ROM appear, double-click **Msetup4.exe**.

- ③ If the **User Account Control** dialog box appears, click **Continue**.

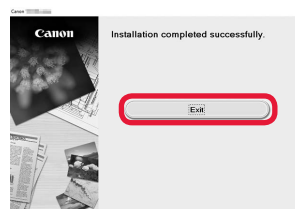
Proceed to step 2 to continue.

- 2 Click **Start Setup**.

If the following screen appears, click **Exit**.



Follow the on-screen instructions to proceed with the setup.

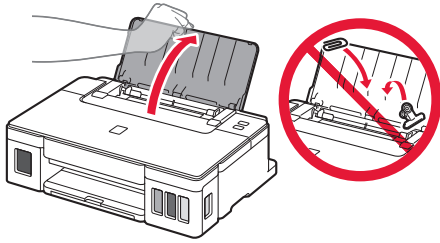


The setup is complete when the printer's ON lamp stops flashing and stays lit. You can print from your computer.

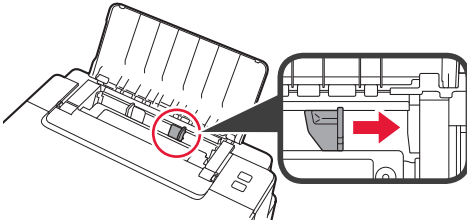
Loading Paper



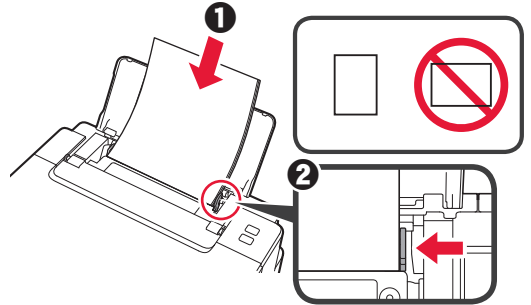
- 1 Open the paper support.



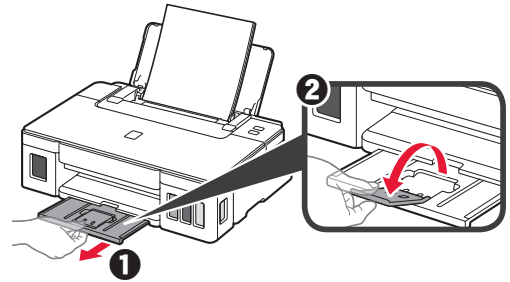
- 2 Slide the right paper guide to the end.



- 3
- 1 Load paper with the print side facing up.
 - 2 Slide the right paper guide to align it with the side of the paper stack.



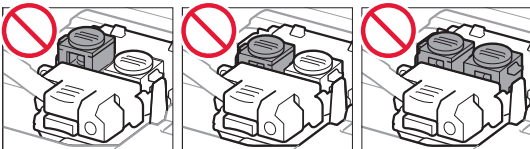
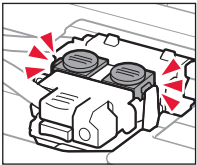
- 4
- 1 Pull out the paper output tray.
 - 2 Open the output tray extension.



Transporting Your Printer

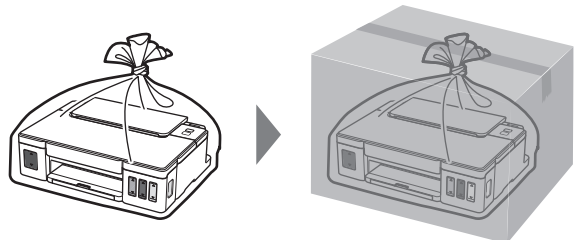
When relocating the printer, make sure of the following. Refer to the **Online Manual** for details.

Check that both joint buttons are pressed down completely to avoid ink leaks.



Pack the printer in a plastic bag in case ink leaks.

- Pack the printer in a sturdy box so that it is placed with its bottom facing down, using sufficient protective material to ensure safe transport.
- Do not tilt the printer. Ink may leak.
- Please handle with care and ensure the box remains flat and NOT turned upside down or on its side, as the printer may be damaged and ink in the printer may leak.
- When a shipping agent is handling transport of the printer, have its box marked "THIS SIDE UP" to keep the printer with its bottom facing down. Mark also with "FRAGILE" or "HANDLE WITH CARE".



Untuk info lebih lanjut hubungi:
Call Center: (021) 2922 6000

DATASCRIP

Jl. Selaparang Blok B-15 Kav.9 Kompleks Kemayoran Jakarta 10610

Tel : (62-21) 6544515

Fax : (62-21) 6544811-13

Email : info@datascrip.co.id

Website: www.canon.co.id

Pendaftaran Petunjuk Penggunaan dan Kartu Jaminan / Garansi dalam Bahasa Indonesia

No. : I.24.D4.02613.0817



Akses Petunjuk Daring

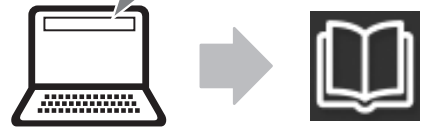
Access Online Manual



Dari browser

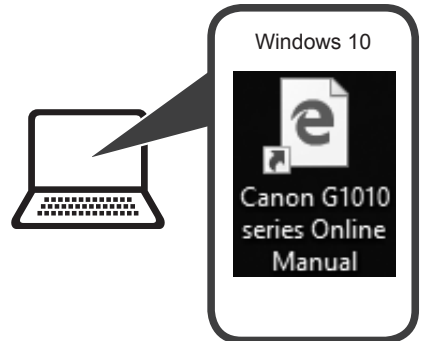
From browser

<http://ij.start.canon>



Dari pintasan desktop

From desktop shortcut



Dari browser

From browser

<http://ij.start.canon>

