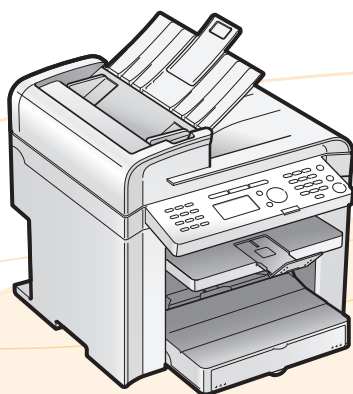


Canon

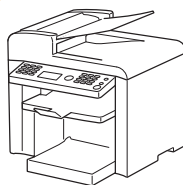
imageCLASS

MF 4570dn / MF 4450

Starter Guide



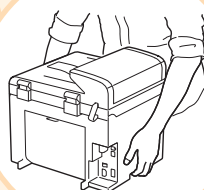
1



Preface

➔ Next Page

2



Installing the Machine

➔ P. 5

3



Configuring and
Connecting the Fax

➔ P. 13

4



Connecting to a Computer
and Installing the Drivers

➔ P. 17

➔ Read this guide first.

Please read this guide before operating this product.

The remarks for important safety instructions are described in "Basic Operation Guide." Read the guide also.

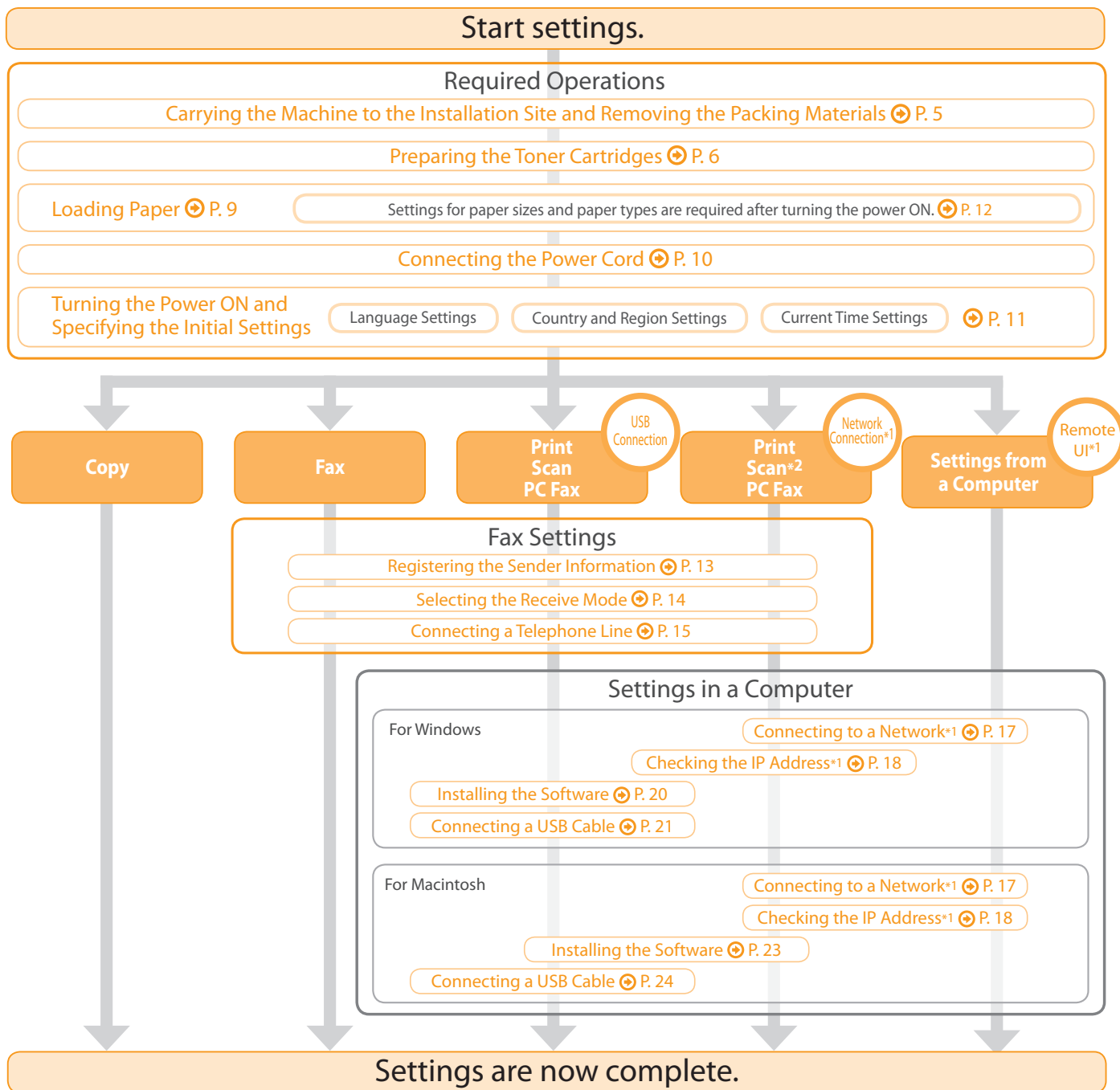
After you finish reading this guide, store it in a safe place for future reference.

Appendix

➔ P. 28

Setting Up the Machine to Suit Your Needs

Determine which machine functions (Copy, Print, Fax, PC Fax, Scan, Remote UI*¹) you intend to use, and make settings according to the flowchart below.



*¹ The network function is available only for MF4570dn.

*² You may use network scan function only in the Windows environment.

Available Features

○: available —: not available

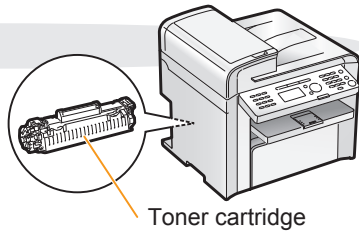
	Copy	Print	2-sided Printing	Fax (PC Fax)	Scan (USB)	Scan (Network)*	Remote UI	ADF (1-sided)	ADF (2-sided)
MF4570dn	○	○	○	○	○	○	○	○	—
MF4450	○	○	—	○	○	—	—	○	—

* You may use network scan function only in the Windows environment.

Checking the Supplied Accessories

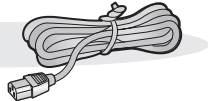
1. Confirm that all the supplied accessories are contained in the box.

- The machine unit
The toner cartridge is already installed.



Toner cartridge

- Power cord



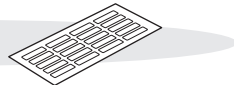
- Starter Guide (This manual)



- Telephone cable



- Speed dial label



If an item is missing or damaged, please contact our Canon Authorized Service Facilities or the Canon Customer Care Center.

About the LAN cable

The machine does not come with a LAN cable or a hub. Have cables or a hub ready as needed.

- Use a Category 5 or higher twisted pair cable.
- If you want to connect the machine to a 100BASE-TX Ethernet network, all the devices to be connected to the LAN must support 100BASE-TX.

About the USB cable

The machine does not come with a USB cable. Have cables ready as needed.

- Basic Operation Guide



- Limited Warranty Notice



- User Software CD-ROM



- Registration Card



Supplied Toner Cartridge

The average yield of the included toner cartridge is as follows.

Canon Cartridge 128 Starter

Average yield*¹: 1,000 sheets

*¹ The average yield is on the basis of "ISO/IEC 19752"² when printing A4 size paper with the default print density setting.

*² "ISO/IEC 19752" is the global standard relating to "Method for the determination of toner cartridge yield for monochromatic electrophotographic printers and multi-function devices that contain printer components" issued by ISO (International Organization for Standardization).

The average yield of the replacement toner cartridge differs from which of the supplied toner cartridge.

To purchase replacement toner cartridges, see "About Replacement Toner Cartridge" in the e-Manual.

User Software CD-ROM

About the Drivers and Software

The drivers and software included in the CD-ROM supplied with this machine are as follows.

MF Drivers

Printer driver	You can print from an application using the machine by installing the printer driver on your computer. You can process print data at high speed by compressing the print data using the computer's processing capabilities.
Fax driver	If you install the fax driver on your computer, you can select "Print" from an application, select the Canon fax driver as a printer, and specify the output destination and options. The fax driver converts the data into an image that conforms to standard fax protocols so that the data can be printed or saved using the recipient's fax machine.
Scanner driver	You can use the machine as a scanner if you install the scanner driver on your computer.
Network Scan Utility (MF4570dn only)	This software is required for using the scan functions via a network. This software is installed with the scanner driver.

MF Toolbox

MF Toolbox*	MF Toolbox is a program which allows you to easily open an image scanned by the scanner in an application, attach the scanned image to an e-mail, and store the scanned image in a hard disk.
-------------	---

Additional Software Programs

Presto! PageManager	This is software for managing scanned images.
---------------------	---

* MF Toolbox for Macintosh and MF Toolbox for Windows may be different in some features. For details, see the Scanner Driver Guide.

Supported Operating Systems

○: available —: not available

	Windows 2000/XP	Windows Vista/7	Windows Server 2003/ Server 2008	Mac OS X (version 10.4.9 or later)
Printer driver	○	○	○*	○
Fax driver	○	○	○*	○
Scanner driver	○	○	—	○ (Only for USB connection)
Network Scan Utility	○*	○*	—	—
MF Toolbox	○	○	—	○ (Only for USB connection)
Presto! PageManager	○	○	—	—

* Available only with a network connection.

About the Supplied Manuals

Read this manual first.

This manual describes the settings for setting up the machine and installing the software. Be sure to read this manual before using the machine.

Starter Guide

This manual



- Preface
- Installing the Machine
- Configuring and Connecting the Fax
- Connecting to a Computer and Installing the Drivers
- Appendix

Read this manual next.

This manual describes the basic use of the machine.

Basic Operation Guide



- Before Using the Machine
- Document and Paper Handling
- Copying
- Printing from a Computer
- Registering Destinations in the Address Book
- Using the Fax Functions
- Using the Scan Functions
- Maintenance
- Troubleshooting
- Registering/Setting the Various Functions
- Appendix

Read the desired chapter to suit your needs.

The e-Manual is categorized by subject to find desired information easily. For details about using the e-Manual, refer to "Using the e-Manual" in "Appendix."

e-Manual

* The e-Manual is included in the User Software CD-ROM.



- Basic Operation
- Copy
- Fax*2
- Print*2
- Scan*2
- Network Settings*1
- Security
- Setting and Managing from Computer*1
- Troubleshooting
- Maintenance
- Setting Menu List
- Specifications

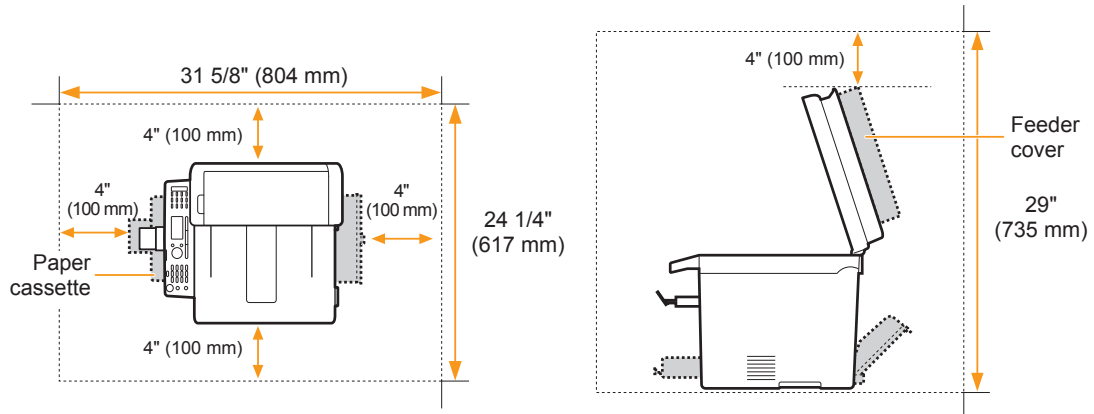
*1 The network function is available only for MF4570dn.

*2 If you are using Macintosh, see the following Driver Guides or Help for more details on these functions. You can find the driver guides in the following locations on the User Software CD-ROM.

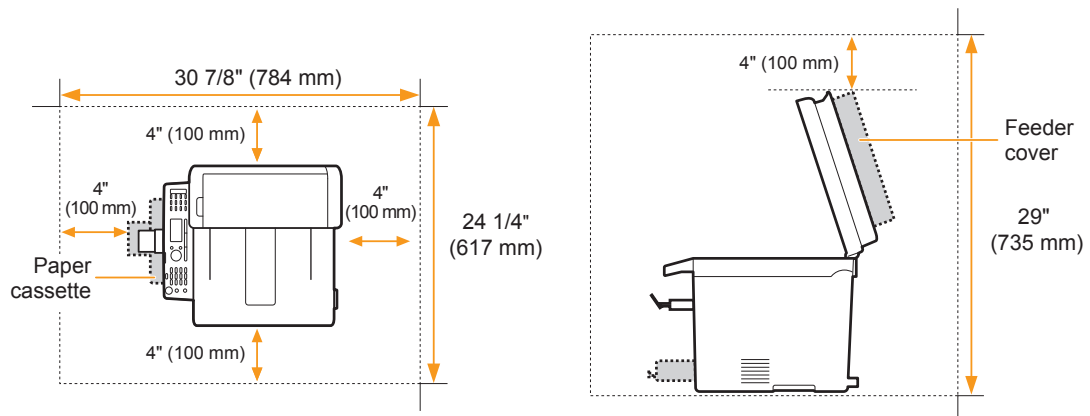
- Fax: User Software CD-ROM → [Manuals] → [GUIDE-FAX-US.pdf]
- Print: User Software CD-ROM → [Manuals] → [GUIDE-UFR II-US.pdf]
- Scan: User Software CD-ROM → [Manuals] → [GUIDE-SCAN-US.pdf]

Determining the Installation Site

• MF4570dn



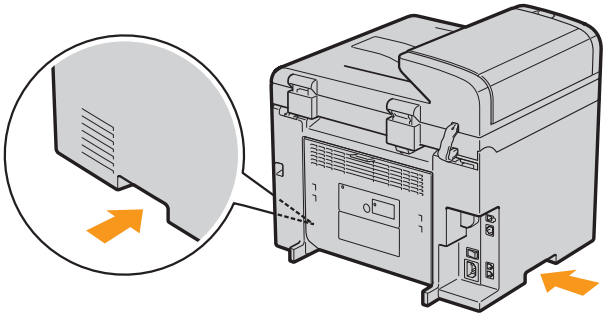
• MF4450



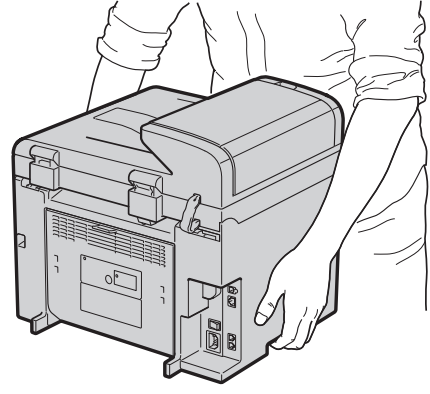
Carrying the Machine to the Installation Site and Removing the Packing Materials

1. Carry the machine to the installation site.

1 Hold the grips.



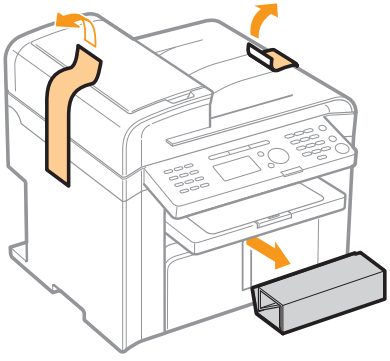
2 Carry the machine.



2. Remove the packing materials.

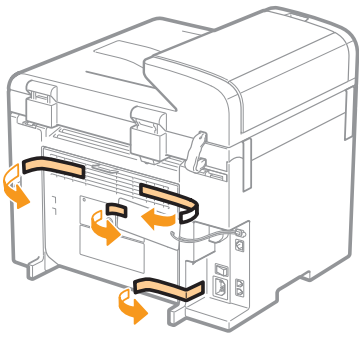
* The packing materials may be changed in form or placement, or may be added or removed without notice.

1 Remove the packing materials.

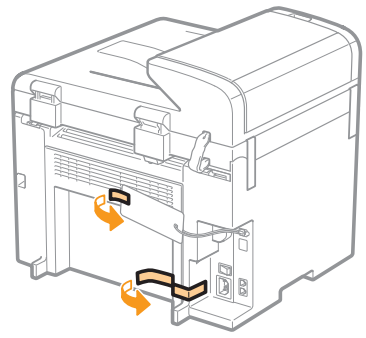


2 Remove the packing materials.

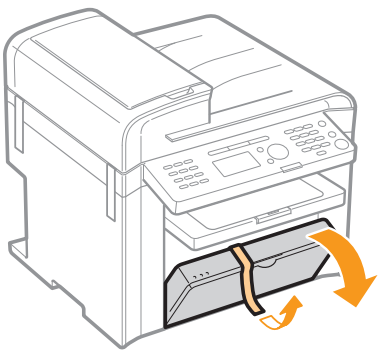
• MF4570dn



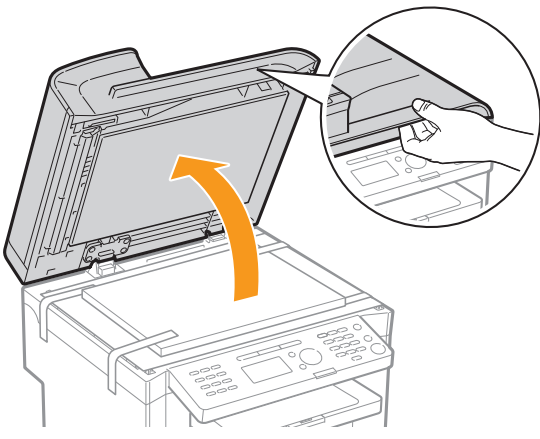
• MF4450



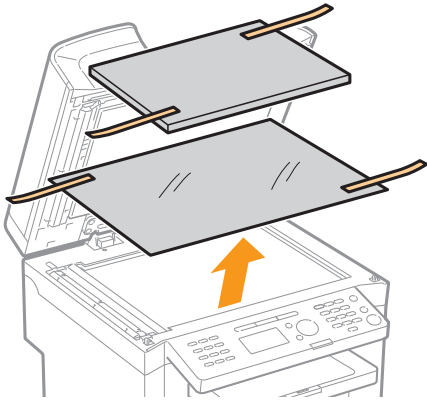
3 Remove the tape while opening the paper cassette.



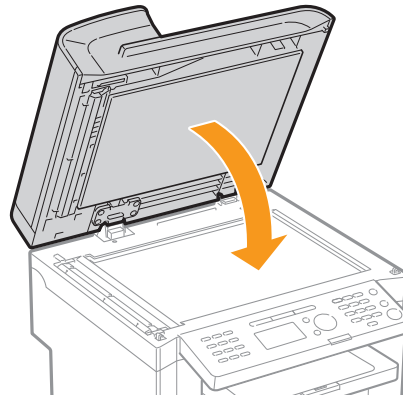
4 Open the feeder.



5 Remove the packing materials with tape.



6 Close the feeder.



Check!

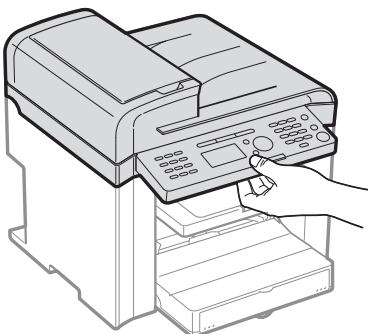
Did you remove all the packing materials?

- MF4570dn: Tape x 7
- MF4450: Tape x 5
- Packing materials with tape x2
- Packing material x1

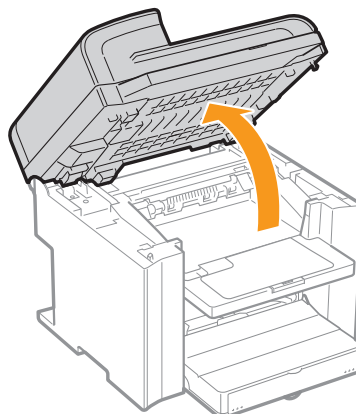
Preparing the Toner Cartridges

1. Lift the scanning platform.

1 Hold the operation panel.



2 Lift the scanning platform.

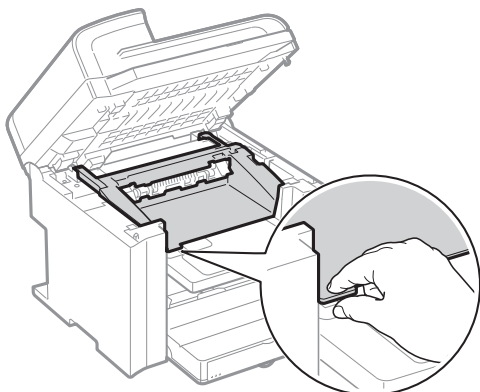


If you cannot lift the scanning platform

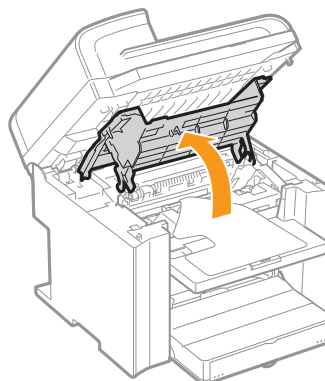
Ensure that the feeder is completely closed.
Do not forcefully lift the scanning platform, as this may damage the machine.

2. Open the toner cover.

1 Hold the grip on the left front side of toner cover.

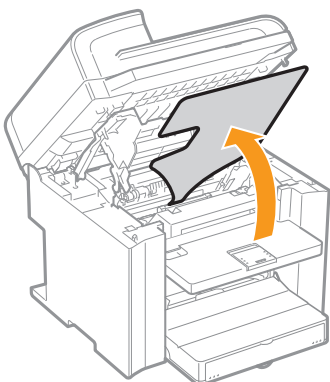


2 Open the toner cover.

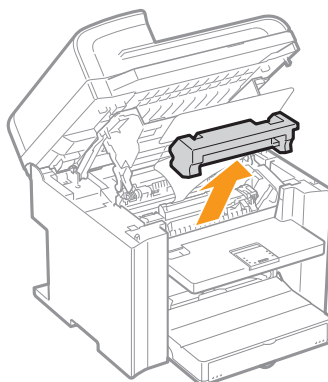


3. Remove the packing materials from the toner cartridge, and then distribute the toner.

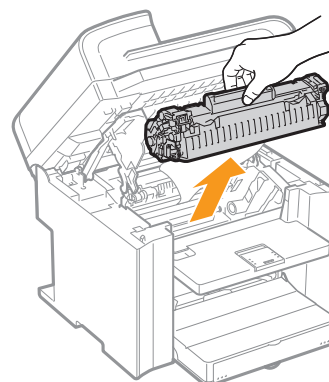
1 Turn the sheet to the back.



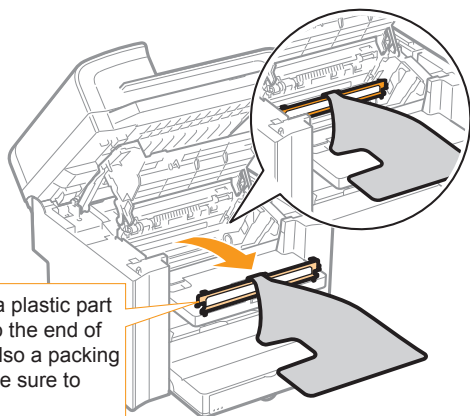
2 Remove the packing material.



3 Remove the toner cartridge.

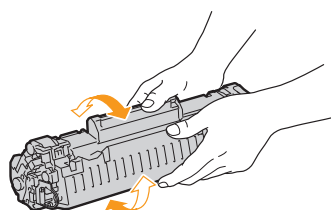


4 Remove the packing material.

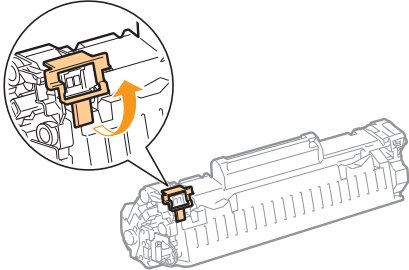


This part (a plastic part attached to the end of paper) is also a packing material. Be sure to remove it.

5 Shake five to six times.

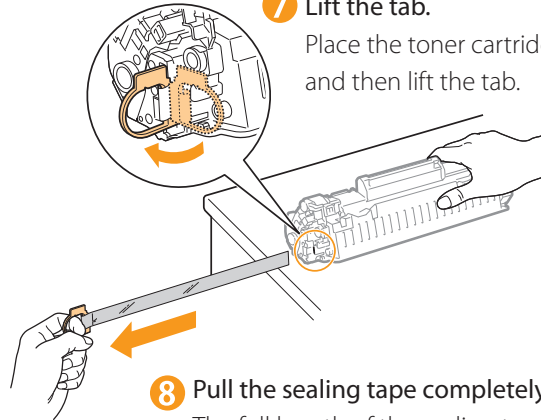


6 Remove the packing material.



7 Lift the tab.

Place the toner cartridge on a flat surface, and then lift the tab.

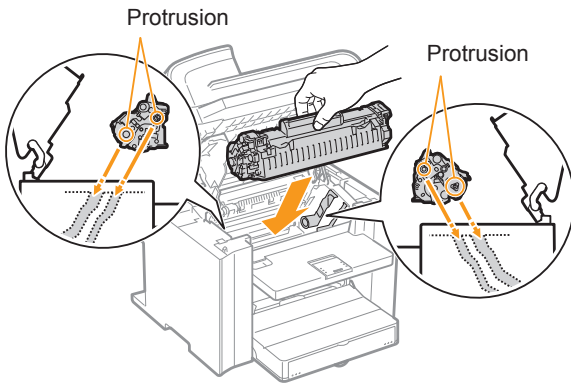


8 Pull the sealing tape completely out.

The full length of the sealing tape is approximately 20" (50 cm).




9 Insert the toner cartridge.

Fit the protrusions on each side of the toner cartridge into the guides located on each side of the machine, and then slide the toner cartridge into the machine.



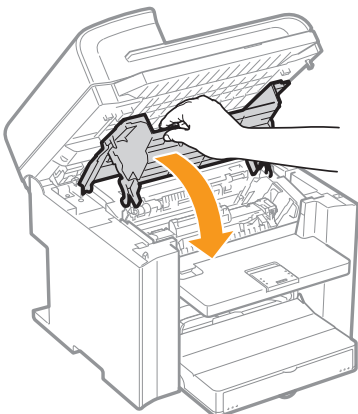
Check!

Did you remove all the packing materials?

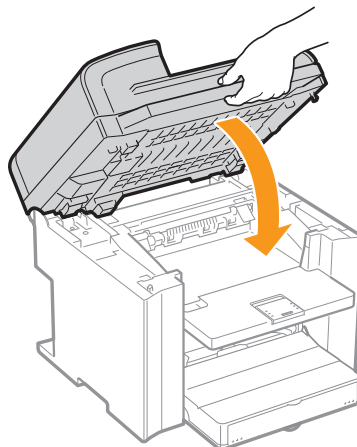
- Packing materials x2 
- Sealing tape x1 
- Packing material with a sheet x1 

4. Close the toner cover, and then lower the scanning platform.

1 Close the toner cover.

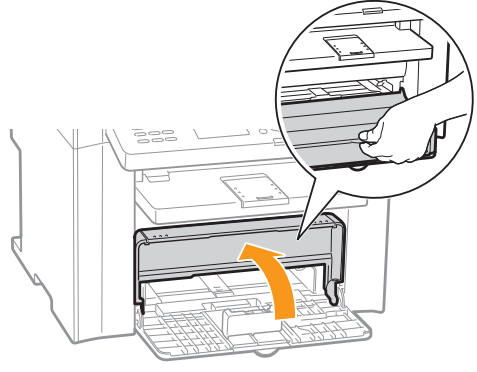


2 Lower the scanning platform.



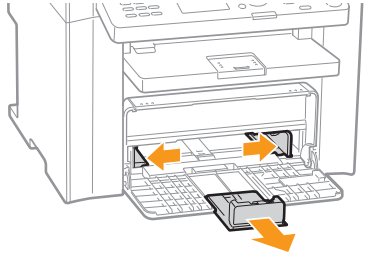
Loading Paper

1. Lift the dust cover.



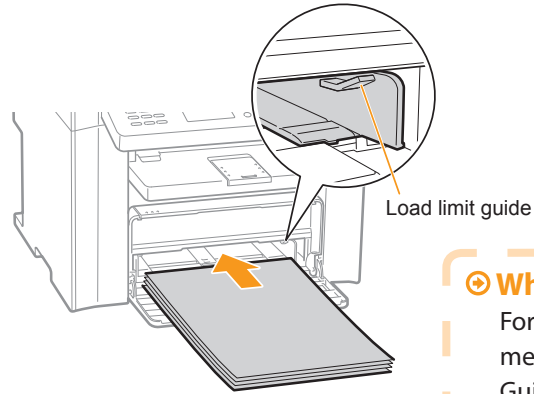
2. Load the paper, and then adjust the paper guides.

1 Spread the paper guides.
Spread the paper guides a little wider than the paper size.



When changing the size of the paper to be loaded
Be sure to set the paper size.
➤ "Setting a Paper Size and Type" (P.12)

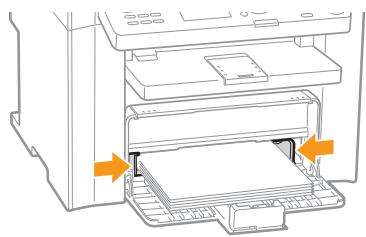
2 Load the paper.
Load the paper until the edge of the paper stack meets the back of the paper cassette.



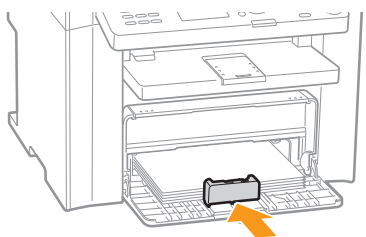
Check!
Ensure that the paper stack does not exceed the load limit guides.

➤ **When using envelopes**
For details on how to load media, see "Basic Operation Guide."

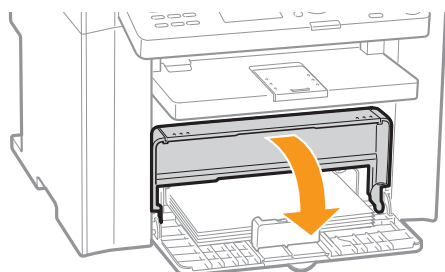
3 Adjust the paper guides to the width of the paper.



4 Adjust the paper guides to the length of the paper.

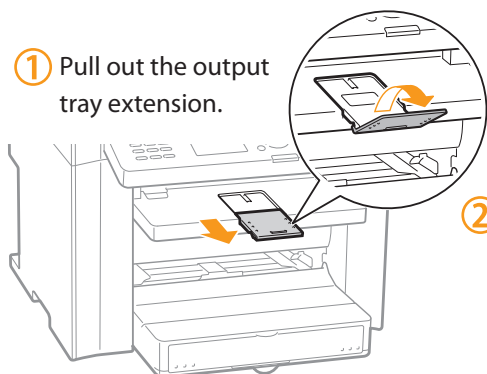


3. Close the dust cover.



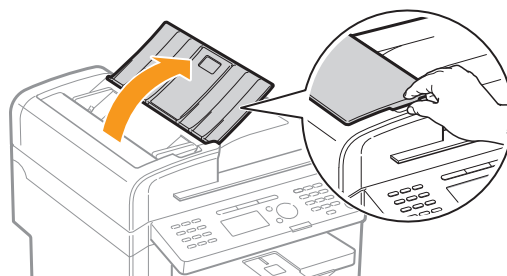
Additional preparations for printing

- ① Pull out the output tray extension.



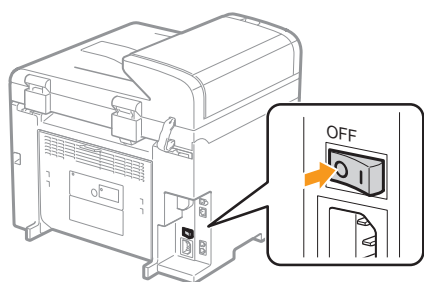
- ② Lift the paper stopper.

- ③ Open the document feeder tray.

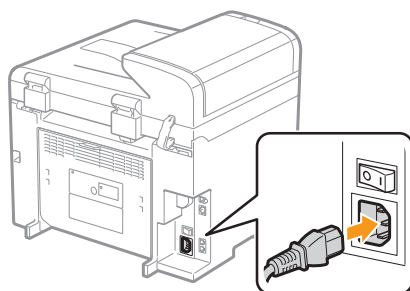


Connecting the Power Cord

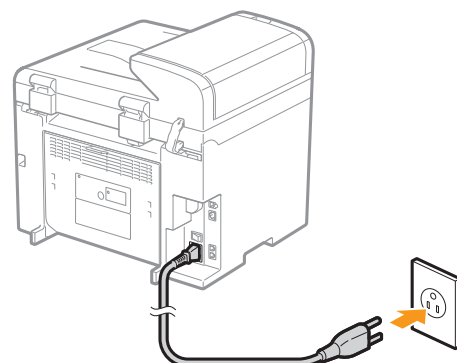
- ① Ensure that the machine is off.



- ② Plug the power plug into the power socket.



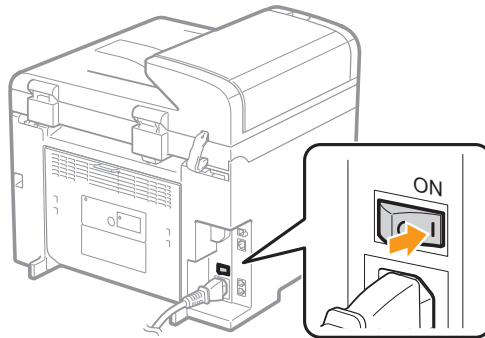
- ③ Plug the power plug into an AC power outlet.



Do not connect the USB cable. Connect the USB cable when installing the software.

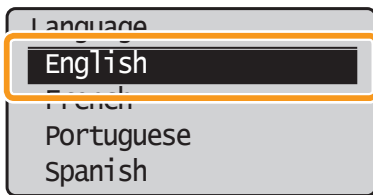
Turning the Power ON and Specifying the Initial Settings

1. Turn ON the machine.

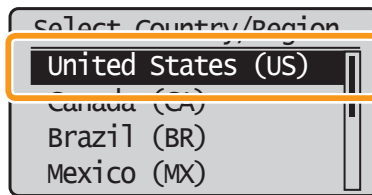


2. Specify initial settings.

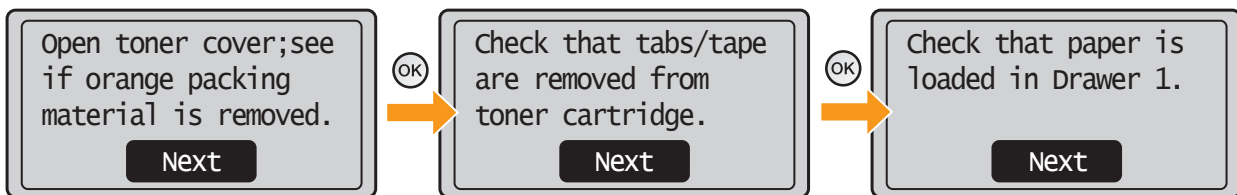
1 Press [▲] or [▼] to select, and then press [OK].



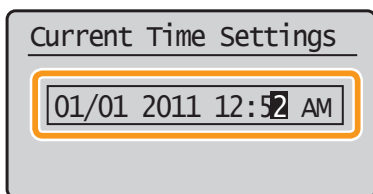
2 Press [▲] or [▼] to select, and then press [OK].



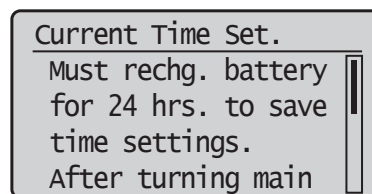
3 Check and press [OK].



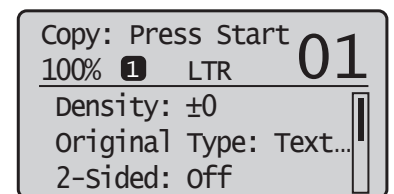
4 Use the numeric keys to enter values.



5 Press [OK].




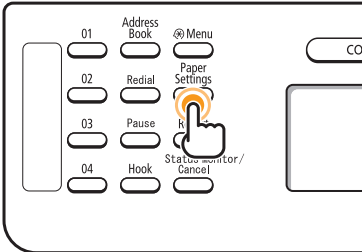
6 An initial screen appears, and initial setting is finished.



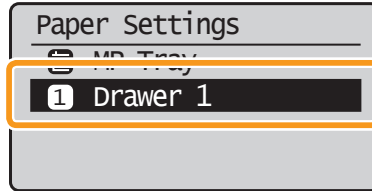
- Move the cursor with [◀] or [▶].
- Switch to <AM> or <PM> with [▲] or [▼].

Setting a Paper Size and Type

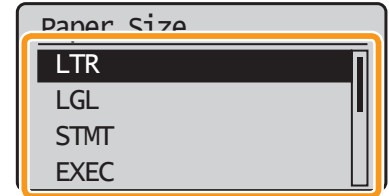
- 1 Press [] (Paper Settings).



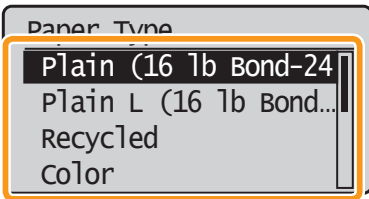
- 2 Press [▲] or [▼] to select, and then press [OK].

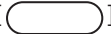


- 3 Press [▲] or [▼] to select, and then press [OK].



- 4 Press [▲] or [▼] to select, and then press [OK].



- 5 Press [] (Paper Settings) to close <Paper Settings> screen.

Specifying Initial Fax Settings and Connecting a Telephone Cable

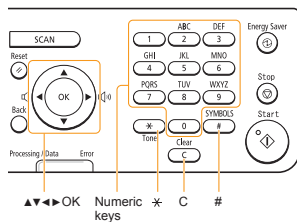
Operate the machine following the on-screen instructions and perform the following settings and connection.

- Registering the fax number and unit name
- Setting the fax receive mode
- Connecting a telephone line

If you are using pulse dialing, change the line type after specifying the settings.

Text Input Method

Enter information (text, symbols, and numbers) into the machine using the following keys.



Changing the entry mode

Press [▼] to select <Entry Mode>, and then press [OK]. You can also press [*] (Tone) to change the entry mode.

Entry mode	Available text
<A>	Alphabet (capital letters) and symbols
<a>	Alphabet (small letters) and symbols
<12>	Numbers

Moving the cursor (entering a space)

Move the cursor by pressing [◀] or [▶]. To enter a space, move the cursor to the end of the text and press [▶].

Entering text, symbols, and numbers

Enter with the numeric keys or [#] (SYMBOLS).

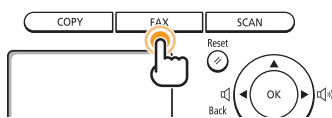
Key	Entry mode: <A>	Entry mode: <a>	Entry mode: <12>
1	@ . - _ /		1
2	ABC	abc	2
3	DEF	def	3
4	GHI	ghi	4
5	JKL	jkl	5
6	MNO	mno	6
7	PQRS	pqrs	7
8	TUV	tuv	8
9	WXYZ	wxyz	9
0	(Not available)		0
#	- . * # ! " , ; : ^ ` _ = / ' ? \$ @ % & + \ () [] { } < >		(Not available)

Deleting text, symbols, or numbers

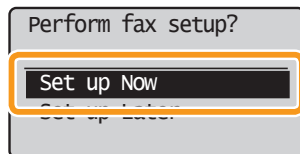
To delete text, numbers, or symbols, press [C] (Clear).
To delete all text, numbers, or symbols, press and hold [C] (Clear).

1. Register the fax number and unit name.

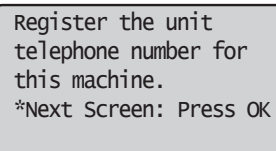
1 Press [FAX].



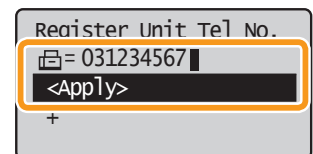
2 Press [▲] or [▼] to select, and then press [OK].



3 Press [OK].



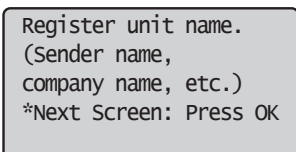
4 Enter.



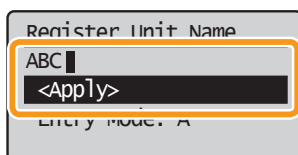
Display "Fax Setup Guide" with the following operations to perform the settings or connections if selecting <Set up Later>.
[Menu] (Menu) → <Fax TX Settings> → <Fax Setup Guide>.

5 Press [▲] or [▼] to select <Apply>, and then press [OK].

6 Press [OK].



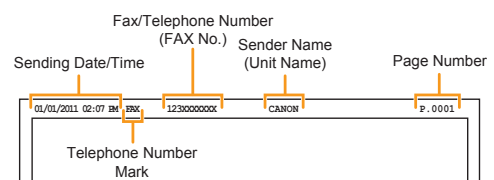
7 Enter.



8 Press [▲] or [▼] to select <Apply>, and then press [OK].

What happens with the unit name

When you send faxes, the registered information is printed on at the top of the fax page.

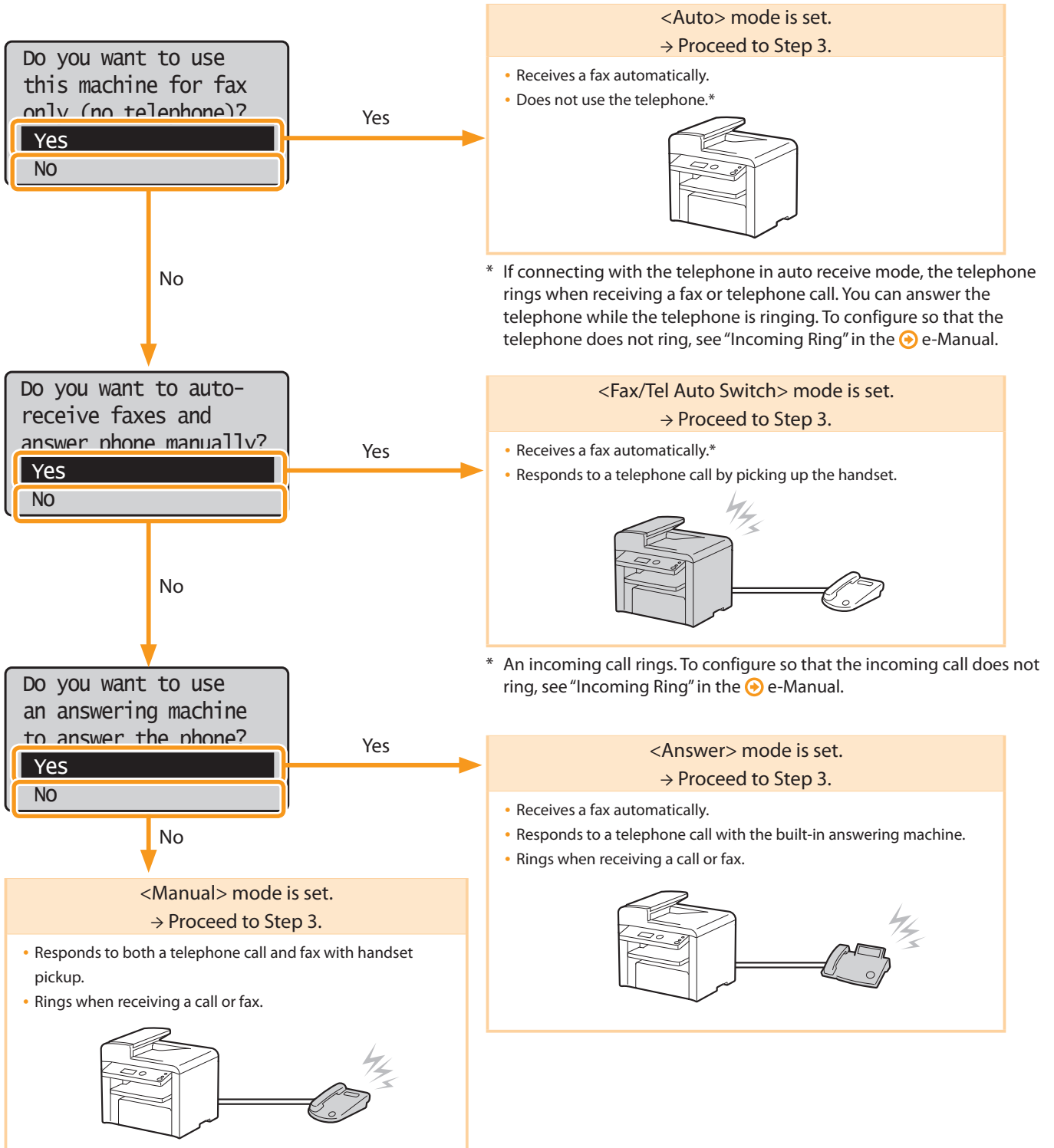


2. Set the fax receive mode.

You can specify how the machine should operate for a fax call or telephone call.

By answering the prompts that appear on the display, the machine will be set to one of the following four operation modes.

<Auto><Fax/Tel Auto Switch><Answer><Manual>



3. Connect a telephone line.

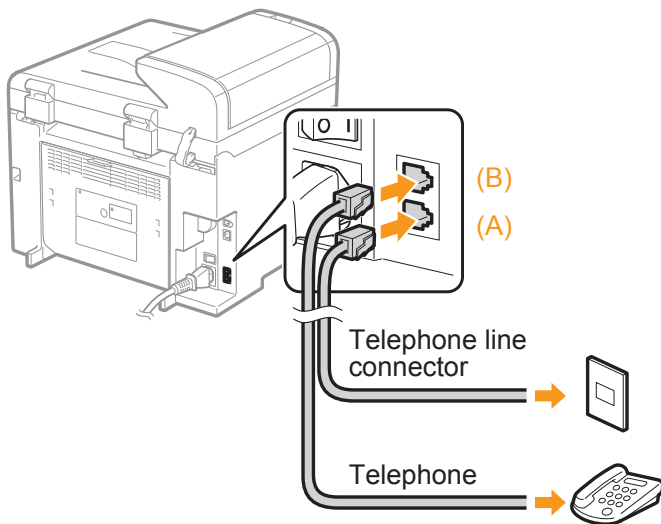
1 Press [OK].

The displayed screen varies depending on the specified receive mode.

Connect phone line.
 Follow illustrations on the next screen:
 Connect line to A.
 *Next : Press OK

Connect phone line.
 Follow illustrations on the next screen and connect:
 1. Phone line to A

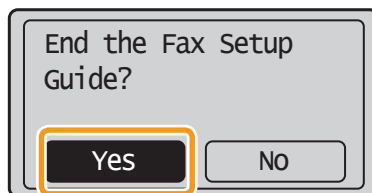
2 Connect telephone cables to the machine as needed.



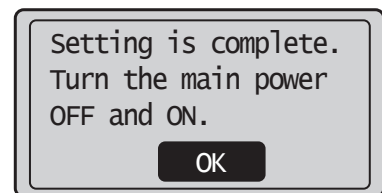
If you want to connect an external telephone with fax functions
 Configure the external telephone so that it does not receive faxes automatically (receives faxes manually) to invalidate the automatic fax receiving function.

3 When connecting is finished, press [OK].

4 Press [◀] to select, and then press [OK].



5 Press [OK].



Fax settings and connections have been completed.











6 Restart the machine to activate the settings.

Turn OFF the machine and wait for at least 10 seconds before turning it ON again.

4. Change the line type.

By default, the telephone line type on the machine is set to tone dialing. If you use tone dialing, skip the following procedure. If you use pulse dialing, follow the procedure below and change the telephone line type setting on the machine to pulse dialing.

If you do not know the type of telephone line you use, contact your local telephone company.

- 1 Press [] (Menu).
- 2 Press [] or [] to select <Fax TX Settings>, and then press [OK].
- 3 Press [] or [] to select <Basic Settings>, and then press [OK].
- 4 Press [] or [] to select <Select Line Type>, and then press [OK].
- 5 Press [] or [] to select the line type you are using, and then press [OK].
 - <Dial 10 PPS>: Pulse dialing
 - <Tone>: Tone dialing (Default)
- 6 Press [] (Menu) to close the menu screen.

Selecting a Method for Connecting the Machine to a Computer

There are two ways to connect the machine to a computer: Network connection and USB connection. Select the connection type according to your environment or functions to be used.

- * Functions with USB connection and network connection can be used simultaneously.
- * To use the scanning function with Macintosh, you need to connect with a USB cable.

• For Network Connection (MF4570dn Only)

⊕ Network Connection and Configuration

The procedures for connecting to and configuring a network are the same for Windows and Macintosh.

Connect to and configure a network using the following procedure.

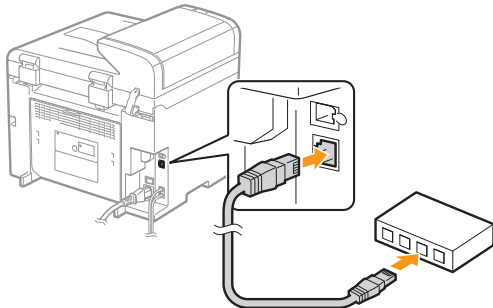
- * Installation methods for the software are different. After connection and configuration, see the relevant pages for the respective procedures for installation.

• For USB Connection

- For Windows
 - ⊕ Installing with USB Connection P. 20
- For Macintosh
 - ⊕ Installing the Software P. 23

Network Connection and Configuration

1. Connect the LAN cable.



About the LAN cable

- The machine does not come with a LAN cable or a hub. Have cables or a hub ready as needed.
- Use a Category 5 or higher twisted pair cable for the LAN.

2. The machine sets the IP address automatically. Wait approximately 2 minutes.

If you want to set the IP address manually, see the following.

- ⊕ e-Manual "Setting IPv4 Address"
- ⊕ e-Manual "Setting IPv6 Address"

About obtaining the IP address automatically (AutoIP)

<DHCP> or <Auto IP> is enabled in the default setting. Even if you do not set the IP address manually, this machine can obtain it automatically.

- Even if you do not have a dedicated device such as a DHCP server, the IP address is obtained automatically.
- The <DHCP> setting is prioritized over <Auto IP>.

If a fixed IP address is set as the IP address of the computer, set the fixed IP address also for this machine manually.

If the IP address of the machine is changed

When the machine and computer are on the same subnet, the connection is maintained.

Installing via Network Connection

- For Windows
 - ⊕ Installing via Network Connection P. 18
- For Macintosh
 - ⊕ Installing the Software P. 23

Installing via Network Connection (For Windows)

1. Check the following points.

- The computer and machine are connected via the network.
- The power of the machine is turned ON.
- IP address is properly set up. ➔ "Checking the IP Address" (P.30)

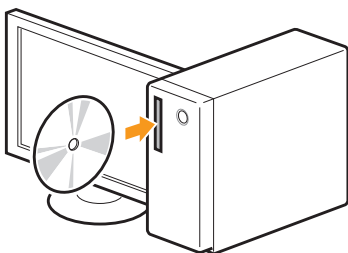
2. Turn on the computer, and then log on as a user with administrative privileges.

If you have already logged on, exit all applications which are running.

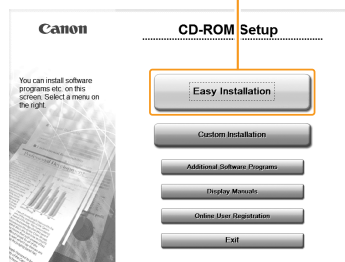
3. Install the MF Drivers and MF Toolbox.

- * If you are operating in the IPv6 environment, you may not install the drivers or software following the procedures below. Refer to "Installing the MF Drivers Via the WSD Network (MF4570dn Only)" in the e-Manual to install MF Drivers.
- * You may not use the scan function in the IPv6 environment.

1 Insert the CD-ROM.



2 Click.



[Easy Installation] performs the installation of the following software.

- Printer driver
- Fax driver
- Scanner driver
- MF Toolbox

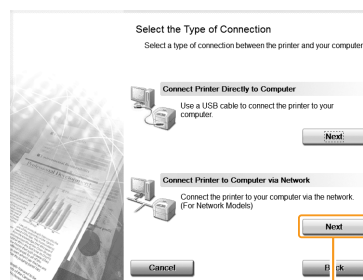
To add the following software and manual to the installation, select [Custom Installation].

- Presto! PageManager
- e-Manual

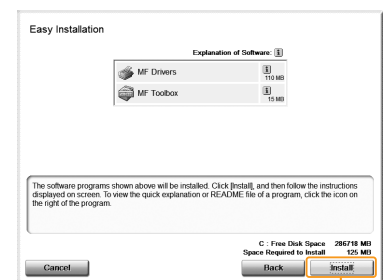
➔ e-Manual "Installing the MF Drivers and MF Toolbox"

If the top screen does not appear

- Windows 2000, XP, and Server 2003
 1. From the [Start] menu, select [Run].
 2. Enter "D:\Minst.exe", and then click [OK].
 - Windows Vista, 7, and Server 2008
 1. Enter "D:\Minst.exe" in [Search programs and files] or [Start Search] under the [Start] menu.
 2. Press the [ENTER] key on the keyboard.
- * The CD-ROM drive name is indicated as "D:" in this manual. The CD-ROM drive name may differ depending on the computer you are using.

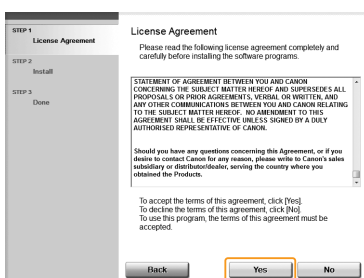


3 Click.

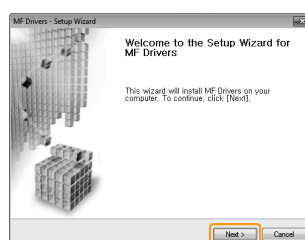


4 Click.

5 Read the contents of the License Agreement.

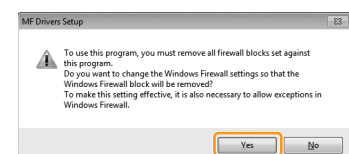


6 Click.



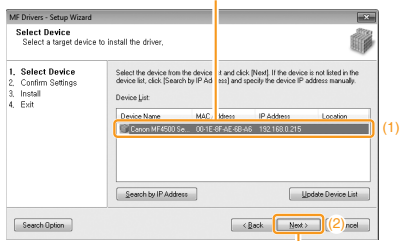
7 Click.

If the following dialog box appears



Click.

8 Select.



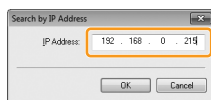
9 Click.

If no devices are displayed in [Device List] Perform the following procedure.

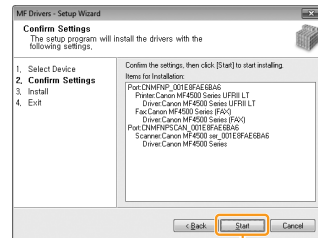
1. Check the following.
 - The computer and device are connected via the network.
 - The device is turned on.
 - The IP address is set correctly.
 - The computer and device are on the same subnet.
 - Security software has been exited.
 2. Click [Update Device List].
- If any devices are not displayed by performing the above procedure, perform the following procedure.

1. Click [Search by IP Address].
2. Enter the IP address of the device to be installed.

➔ "Checking the IP Address" (P.30)

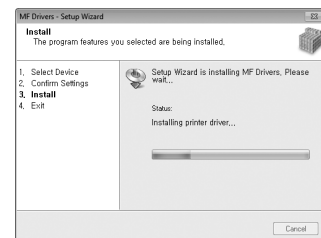


3. Click [OK].



10 Click.

The installation starts.



11 Click.

Next, installation of MF Toolbox starts.

* In Windows 2000 Server/ Server 2003/2008, MF Toolbox is not installed. Proceed to Step 14.

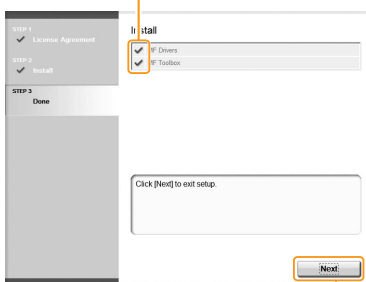


12 Click.



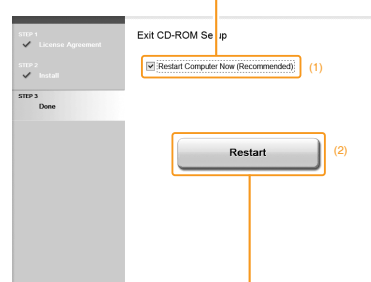
13 Click.

14 Ensure that [] is added.



15 Click.

16 Select the check box.



17 Click.

The CD-ROM may be removed once this screen appears.

Checking the Installation Results

➔ P. 22

Installing with USB Connection (For Windows)

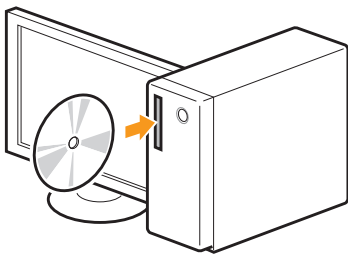
- Connect the USB cable after installing the software.
- Ensure that the power of the machine is turned on when connecting the USB cable.

1. Turn on the computer, and then log on as a user with administrative privileges.

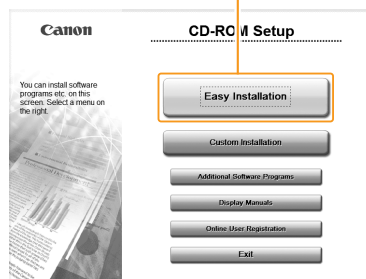
If you have already logged on, exit all applications which are running.

2. Install the MF Drivers and MF Toolbox.

1 Insert the CD-ROM.



2 Click.



[Easy Installation] performs the installation of the following software.

- Printer driver
- Fax driver
- Scanner driver
- MF Toolbox

To add the following software and manual to the installation, select [Custom Installation].

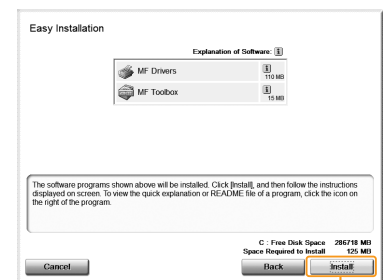
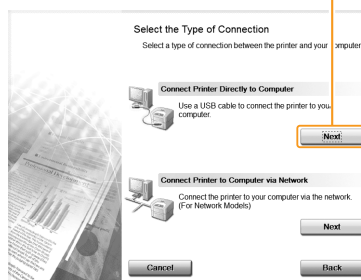
- Presto! PageManager
- e-Manual

➔ e-Manual "Installing the MF Drivers and MF Toolbox"

If the top screen does not appear

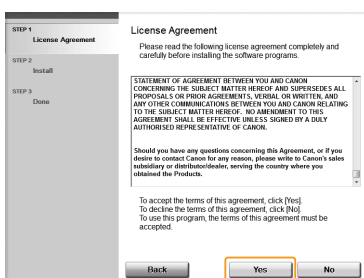
- Windows 2000, XP, and Server 2003
 1. From the [Start] menu, select [Run].
 2. Enter "D:\Minst.exe", and then click [OK].
 - Windows Vista, 7, and Server 2008
 1. Enter "D:\Minst.exe" in [Start Search] or [Search programs and files] under the [Start] menu.
 2. Press the [ENTER] key on the keyboard.
- * The CD-ROM drive name is indicated as "D:" in this manual. The CD-ROM drive name may differ depending on the computer you are using.

3 Click.

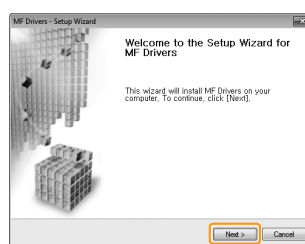


4 Click.

5 Read the contents of the License Agreement.

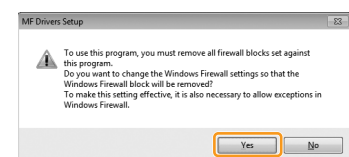


6 Click.

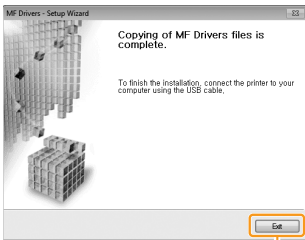


7 Click.

If the following dialog box appears



Click.



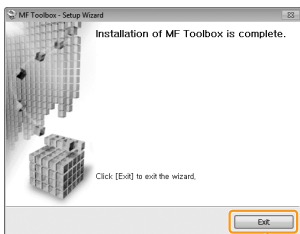
8 Click.

Next, installation of MF Toolbox starts.

* In Windows 2000 Server/Server 2003/2008, MF Toolbox is not installed. Proceed to Step 11.

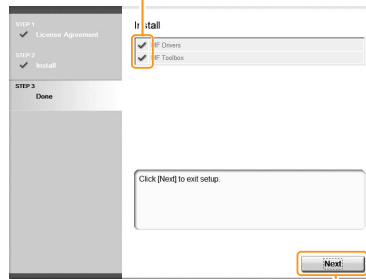


9 Click.



10 Click.

11 Ensure that is added.



12 Click.

13 Select the check box.

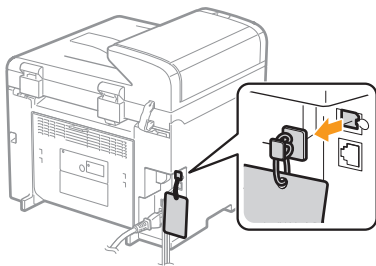


14 Click.

The CD-ROM may be removed once this screen appears.

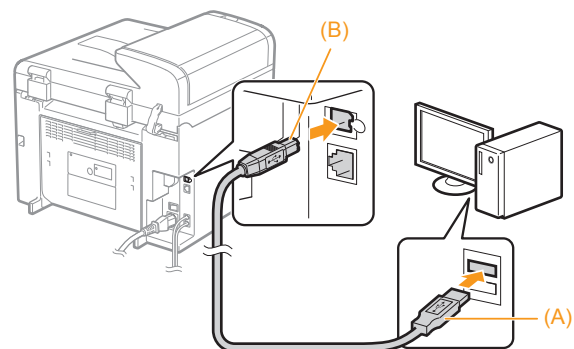
3. Connect the USB cable.

1 Remove cap plug.
Remove by pulling the string.



2 Connect the cable.

- Flat end (A): Connect to the USB port on the computer.
- Square end (B): Connect to the USB port on the machine.









When a dialog box is displayed
Follow the on-screen instructions and complete the installation.

Checking the Installation Results

➔ P. 22

Checking the Installation Results (For Windows)

Ensure that the MF Drivers and MF Toolbox are installed correctly.
Ensure that the icons for the installed software are added as follows.

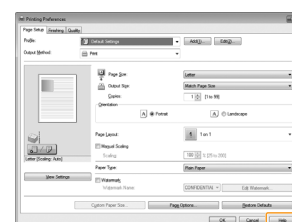
Software	Location	Icon
Printer driver	Printer folder <ul style="list-style-type: none"> • Windows 2000 From the [Start] menu, select [Settings] → [Printers]. • Windows XP Professional/Server 2003 From the [Start] menu, select [Printers and Faxes]. 	
Fax driver	<ul style="list-style-type: none"> • Windows XP Home Edition From the [Start] menu, select [Control Panel], click [Printers and Other Hardware] → [Printers and Faxes]. • Windows Vista From the [Start] menu, select [Control Panel], and then click [Printers]. • Windows 7 From the [Start] menu, select [Devices and Printers]. • Windows Server 2008 From the [Start] menu, select [Control Panel], and then double-click [Printers]. 	
Scanner driver	[Scanners and Cameras] or [Scanners and Cameras Properties] folder <ul style="list-style-type: none"> • Windows 2000 From [Start] menu, select [Settings] → [Control Panel] → double-click [Scanners and Cameras]. • Windows XP From the [Start] menu, select [Control Panel], and then click [Printers and Other Hardware] → [Scanners and Cameras]. • Windows Vista From the [Start] menu, select [Control Panel], and then click [Hardware and Sound] → [Scanners and Cameras]. • Windows 7 1. Enter "scanner" in [Search programs and files] under the [Start] menu. 2. Click [View scanners and cameras]. 	<ul style="list-style-type: none"> • For network connection  • For USB connection 
MF Toolbox	Desktop	
Network Scan Utility	Taskbar	

How to Use the Online Help

In the Online Help, all the functions of the driver software and information about options are included. If you want to view descriptions of the functions and settings immediately when using the driver software, make use of the Online Help.

How to display the Help screen

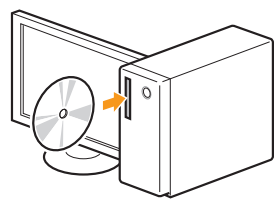
- (1) Select [File] → [Print] from the menu bar in the application.
- (2) Select the printer in [Select Printer] or [Name] in the [Print] dialog box.
- (3) Click [Preferences] or [Properties].
- (4) Click [Help].



Installing the Software (For Macintosh)

- The scanning function can be used only with a USB connection. (It cannot be used with a network connection.)
- Connect the USB cable after installing the software.
- The installation screen varies depending on the version of MAC OS X.

1 Close all applications that are running. 2 Insert the CD-ROM.



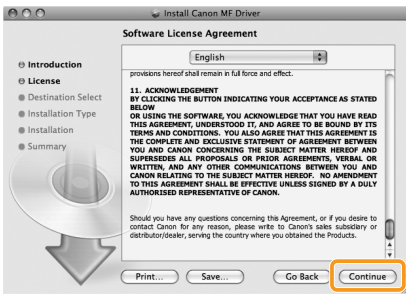
3 Double-click the CD-ROM icon.

4 Double-click.

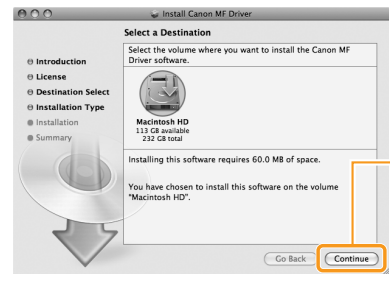


5 Click.

6 Read the contents of the License Agreement.

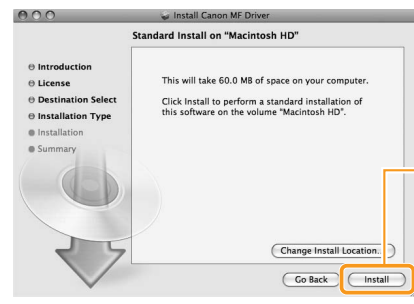


7 Click.

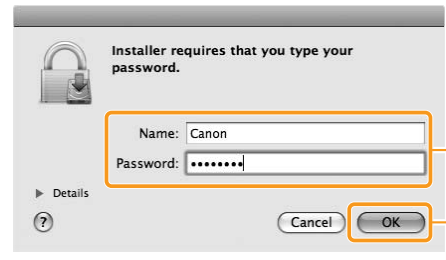


9 Click.
* You cannot change the installation location. Click [Continue].

Depending on the system environment, the [Select a Destination] dialog box may not be displayed. In this case, skip to step 10.



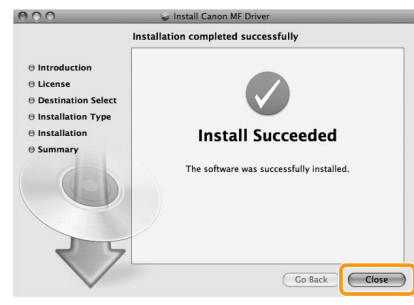
10 Click.
* [Change Install Location] button may appear, but you cannot change the installation location.



11 Enter.

12 Click.

Depending on the system environment, the [Authenticate] dialog box may not be displayed. In this case, skip to step 13.

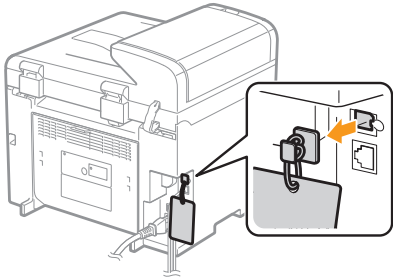


13 Click.

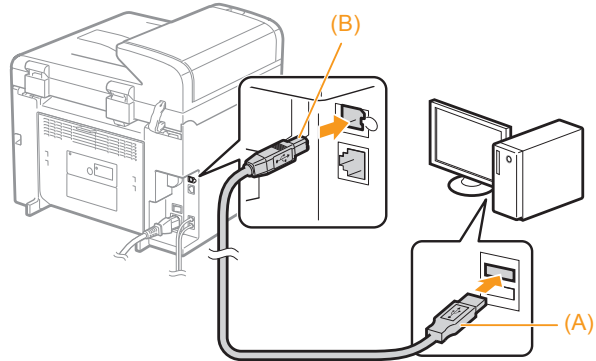
Connecting a USB Cable (For Macintosh)

- Perform the following procedure only when connecting this machine to Macintosh with a USB cable.

- 1 Remove the cap plug.
Remove by pulling the string.



- 2 Connect the cable.
 - Flat end (A): Connect to the USB port on the computer.
 - Square end (B): Connect to the USB port on the machine.



➔ Registering the Printer and Fax P. 25

○ Registering the Printer and Fax (For Macintosh)

To print or send faxes from a Macintosh, you need to register this machine in the Macintosh. The registration method varies depending on the connection type. Select a method according to your environment.
 * The scanning function does not need to be registered.

• When Using Auto IP (Bonjour)
 ⊕ Bonjour Connection P. 25

• When Using a TCP/IP Network
 ⊕ TCP/IP Connection P. 26

• When Connecting with a USB Cable
 ⊕ USB Connection P. 27

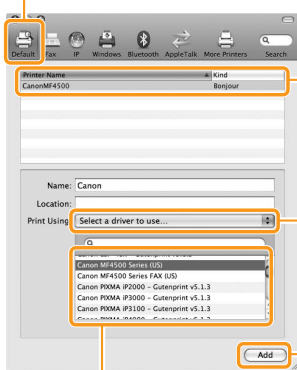
○ Bonjour Connection (For Macintosh)

Register the printer and fax respectively following the procedure from 1 to 10.

- 1 Open [System Preferences].
- 2 Click [Print & Fax].
- 3 Click the [+] icon.

If you are using Mac OS X 10.4.x, click [Print] in the [Print & Fax] dialog box to display the [Print] pane, and then click the [+] icon.

- 4 Select.
 If you are using Mac OS X 10.4.x, select [Default Browser].

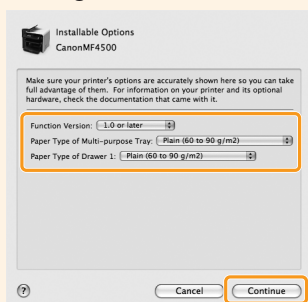


- 5 Select.
 Select a printer name for which [Bonjour] is displayed in the [Kind] or [Connection] column.

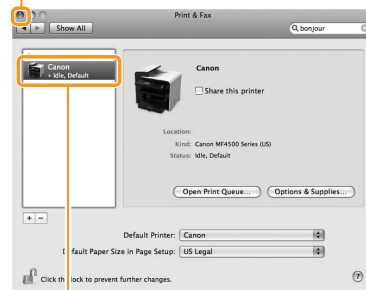
- 6 Select.
 If you are using Mac OS X 10.4.x, select [Canon] from [Print Using].

- 7 Select.
 If you are using Mac OS X 10.6.x, select the corresponding driver from the separate dialog box, and then click [OK].

If the following screen appears, specify the optional settings, and then click [Continue].



- 10 Click.



- 9 Check that this machine is added to the [Print & Fax] dialog box.

⊕ Checking the Installation Results P. 27

TCP/IP Connection (For Macintosh)

Register the printer and fax respectively following the procedure from 1 to 11.

* You may not use IPv6 with this machine.

1 Open [System Preferences].

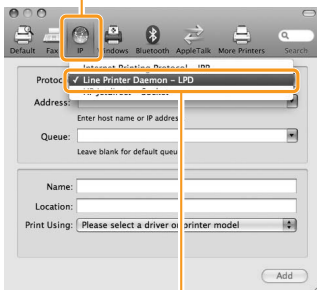
2 Click [Print & Fax].

3 Click the [+] icon.

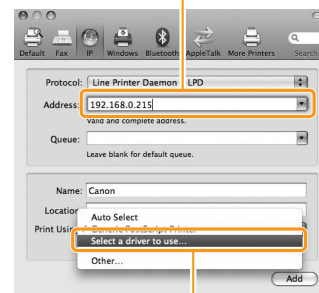
If you are using Mac OS X 10.4.x, click [Print] in the [Print & Fax] dialog box to display the [Print] pane, and then click the [+] icon.

4 Select.

If you are using Mac OS X 10.4.x, select [IP Printer].



6 Enter the IP address of this machine.

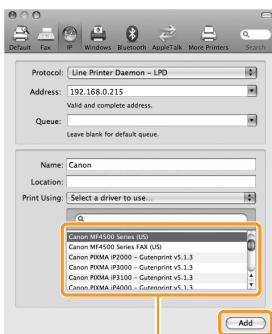


5 Select.

* [IPP (Internet Printing Protocol)] is not supported.

7 Select.

If you are using Mac OS X 10.4.x, select [Canon] from [Print Using].

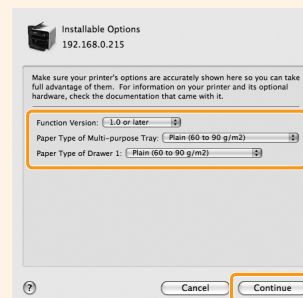


9 Click.

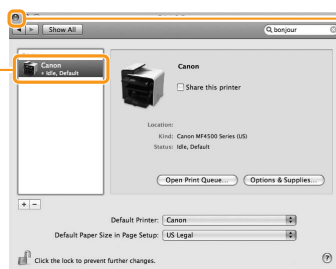
8 Select a driver that supports this machine.

If you are using Mac OS X 10.6.x, select the corresponding driver from the separate dialog box, and then click [OK].

If the following screen appears, specify the optional settings, and then click [Continue].



10 Check that this machine is added to the [Print & Fax] dialog box.



11 Click.

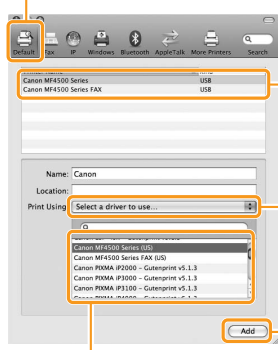
➤ Checking the Installation Results P. 27

USB Connection (For Macintosh)

Register the printer and fax respectively following the procedure from 1 to 10.

- 1 Open [System Preferences].
- 2 Click [Print & Fax].
- 3 Click the [+] icon.
If you are using Mac OS X 10.4.x, click [Print] in the [Print & Fax] dialog box to display the [Print] pane, and then click the [+] icon.

4 Select.
If you are using Mac OS X 10.4.x, select [Default Browser].

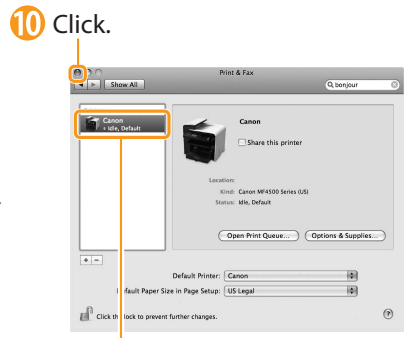


- 5 Select.
Select a printer name for which [USB] is displayed in the [Kind] or [Connection] column.
- 6 Select.
If you are using Mac OS X 10.4.x, select [Canon] from [Print Using].
- 8 Click.

7 Select a driver.
Printer driver:
Canon MF4500 Series (US)
Fax driver:
Canon MF4500 Series FAX (US)

If you are using Mac OS X 10.6.x, select the corresponding driver from the separate dialog box, and then click [OK].

If the following screen appears, specify the optional settings, and then click [Continue].



- 10 Click.
- 9 Check that this machine is added to the [Print & Fax] dialog box.

➔ [Checking the Installation Results P. 27](#)

Checking the Installation Results (For Macintosh)

With this section, check that the scanner driver is installed correctly.

- You do not need to check the installation results of the printer driver and fax driver. You can use the drivers when the registration of this machine is completed.
- 1 The computer is connected with the scanner.
- 2 Open the Image Capture application of your Mac OS X.
- 3 When [Canon MF4500 Series] appears in the following locations, the installation of the driver was successful.
 - Mac OS X 10.4.x/10.5.x
The pull-down menu displayed by clicking [Devices] in the menu bar.
 - Mac OS X 10.6.x
The left list in the window

Using the e-Manual

Page configuration of the e-Manual

When you start the e-Manual, the screen below is displayed.

The screenshot shows the Canon e-Manual interface for the ImageCLASS MF4570dn/MF4450. It features a search bar at the top right, a navigation menu on the left, and a main content area with various sections like 'Select from Functions', 'Managing and configuring the Machine', and 'Troubleshooting and Maintenance'. Callout boxes provide instructions: 'Click to refer to the contents, glossary, and how to use the e-Manual.' points to the top navigation; 'Enter a keyword which you want to search, and then click the right button.' points to the search bar; 'Click to view precautions when using Macintosh.' points to the 'For Macintosh Users' link; 'Click a button for the function which you want to use or desired information.' points to the 'Select from Functions' section; and 'Click when performing troubleshooting or maintenance of the machine.' points to the 'Troubleshooting and Maintenance' section.

For Windows

Installing the e-Manual on your computer


- 1 Insert the User Software CD-ROM in your computer.
- 2 Click [Custom Installation].
If CD-ROM Setup does not appear, see "If the top screen does not appear."
- 3 Click [Next].
- 4 Select only the [Manuals] check box.
- 5 Click [Install].
- 6 Click [Yes].
- 7 Click [Next].
- 8 When the installation finished, click [Exit].
- 9 To display the e-Manual, double-click the short cut icon [MF4500 Series e-Manual] (or [MF4400 Series e-Manual]) on the desktop.

* ActiveX may block pop-ups in the background. If the e-Manual is not displayed properly, look for an information bar at the top of the page and click the information bar.

If the top screen does not appear

- Windows 2000, XP, and Server 2003
 1. From the [Start] menu, select [Run].
 2. Enter "D:\Minst.exe", and then click [OK].
 - Windows Vista, 7, and Server 2008
 1. Enter "D:\Minst.exe" in [Start Search] or [Search programs and files] under the [Start] menu.
 2. Press the [ENTER] key on the keyboard.
- * The CD-ROM drive name is indicated as "D:" in this manual. The CD-ROM drive name may differ depending on the computer you are using.

Displaying the e-Manual directly from the CD-ROM

- 1 Insert the User Software CD-ROM in your computer.
- 2 Click [Display Manuals].
- 3 Click [] for [e-Manual].

* Depending on the operating system you are using, a security protection message is displayed. Allow the contents to be displayed.

For Macintosh

Installing the e-Manual on your computer

- 1 Insert the User Software CD-ROM in your computer.
- 2 Open the [Manuals] folder.
- 3 Drag and drop the [MF Guide] folder into a location where you want to save it.
- 4 When displaying the installed e-Manual, double-click [index.html] in the saved [MF Guide] folder.

Displaying the e-Manual directly from the CD-ROM

- 1 Insert the User Software CD-ROM in your computer.
- 2 Open the [Manuals] → [MF Guide] folders.
- 3 Double-click [index.html].

For more details on the fax, print, and scan functions

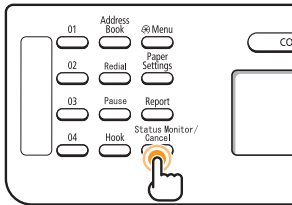
See the following Driver Guides or Help.

You can find the driver guides in the following locations on the User Software CD-ROM.

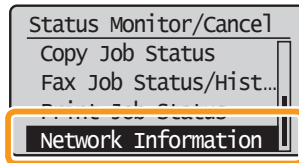
- Fax:
User Software CD-ROM → [Manuals] → [GUIDE-FAX-US.pdf]
- Print:
User Software CD-ROM → [Manuals] → [GUIDE-UFR II-US.pdf]
- Scan:
User Software CD-ROM → [Manuals] → [GUIDE-SCAN-US.pdf]

Checking the IP Address

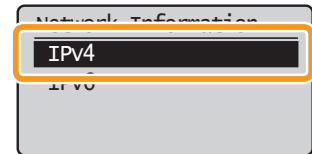
- 1 Press [] (Status Monitor/Cancel).



- 2 Press [▲] or [▼] to select, and then press [OK].



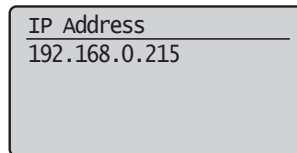
- 3 Press [▲] or [▼] to select, and then press [OK].




- 4 Press [▲] or [▼] to select, and then press [OK].



- 5 Check the IP address.



- 6 Press [] (Status Monitor/Cancel) to close the screen.

If the IP address displayed on the screen is between "169.254.1.0 and 169.254.254.255"

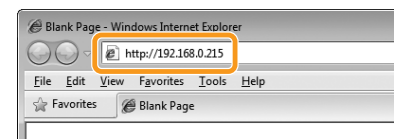
This IP address is the one assigned by the AutoIP function. If an IP address other than link-local addresses is set for the computer, set an IP address in the same subnet as the computer (other than link-local addresses) also for this machine manually. This enables the installer to search for this machine.

- ➔ e-Manual "Setting IPv4 Address"

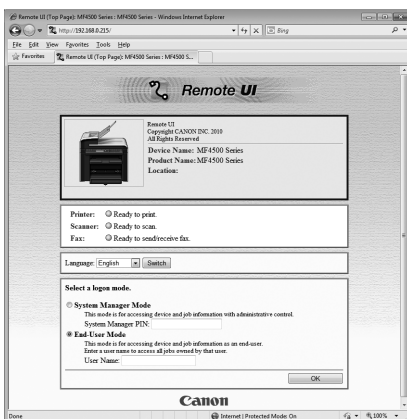
Check the network operation.

- 1 Start the web browser of a computer which is connected to a network.
- 2 Enter "http://<IP address of the machine>/" in the address field, and then press the [ENTER] key on your keyboard.

The <IP address of the machine> is the address checked in Step 5.
Input Example: <http://192.168.0.215/>



- 3 Check that the screen of the Remote UI is displayed.



When the machine is connected to a switching hub

You may not be able to connect the machine to a network even though your network settings are appropriate. Delaying the machine's network startup time may solve the problem.

- ➔ e-Manual "Specifying the Wait Time until the Machine Connects to a Network"

When the Remote UI is not displayed

Check the following.

- Whether the computer and hub are connected using a LAN cable
- Whether <Remote UI On/Off> is set to <On>
- ➔ e-Manual "System Settings"

If You Want to Uninstall the Installed Software

If you do not need the printer driver, fax driver, scanner driver, or MF Toolbox, you can uninstall them with the following procedure.

1. Confirm the following points.

- You must have administrative privileges on the computer
- You should have the installation software (in case you want to re-install the drivers)
- You have closed all applications on your computer

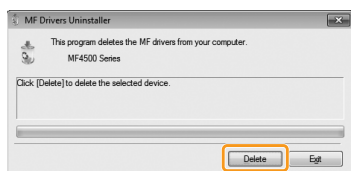
2. Delete the software.

For Windows

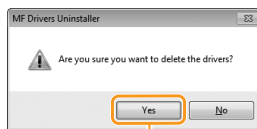
* If your machine is connected to a computer via the WSD network, you may not uninstall the drivers or software following the procedures below. Refer to "Uninstalling the Software" in the e-Manual to install MF Drivers.

For the printer/fax/scanner driver

- 1 From the [Start] menu, click [(All) Programs] → [Canon] → [MF4500 Series] (or [MF4400 Series]) → [Uninstall Drivers].



2 Click.



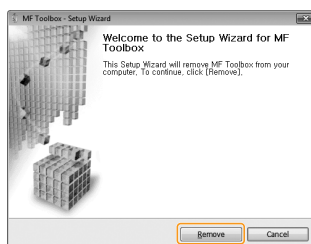
3 Click.



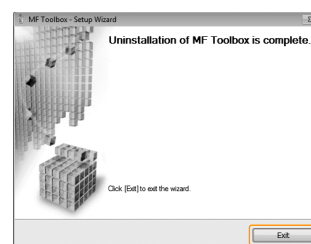
4 Click.

For MF Toolbox

- 1 From the [Start] menu, click [(All) Programs] → [Canon] → [MF Toolbox 4.9] → [Toolbox Uninstall].



2 Click.



3 Click.

For Macintosh

1 If the machine is connected to a computer with a USB cable, disconnect the USB cable.

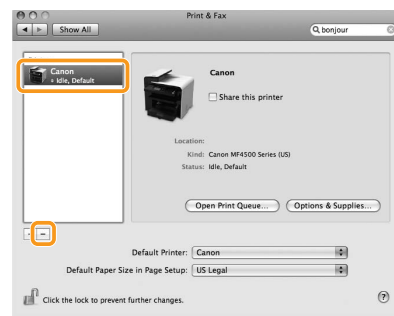
If you want to delete the Scanner Driver or MF Toolbox, proceed to step 4.

2 Open [System Preferences], and then click [Print & Fax].



3 Select the machine, and then click the [-] icon.

If you are using OS X 10.4.x, click [Print] to display the [Print] pane, and then click the [—] icon.



Delete all print queues set from this driver.

4 Start the Mac OS X Finder.

5 From the menu bar, click [Go] → [Go to Folder].

6 Enter the location of the folder below, click [Go], and then delete a file or folder.

Drag a file or folder to [Trash] icon on the Dock to delete.

If [Authenticate] dialog box appears, enter the administrator's name and password, and then click [OK].

Software	Location of the folder to enter	Name of the file or folder to delete
Printer Driver	/Library/Printers/Canon/	UFR2
	/Library/LaunchAgents/	jp.co.canon.UFR2.BG.plist
	<ul style="list-style-type: none"> When using Mac OS X 10.4.x: /Library/Printers/PPDs/Contents/Resources/en.lproj/ When using Mac OS X 10.5 or later: /Library/Printers/PPDs/Contents/Resources/ 	CNTDXXXZUS.ppd.gz (XXX may differ depending on the model.)
Fax Driver	/Library/Printers/Canon/	CUPSFAX
	/Library/LaunchAgents/	jp.co.canon.CUPSFAX.BG.plist
	<ul style="list-style-type: none"> When using Mac OS X 10.4.x: /Library/Printers/PPDs/Contents/Resources/en.lproj/ When using Mac OS X 10.5 or later: /Library/Printers/PPDs/Contents/Resources/ 	CNTDXXXFUS.ppd.gz (XXX may differ depending on the model.)
Scanner Driver / MF Toolbox	/Applications/Canon MF Utilities/	MF Toolbox
	/Library/Application Support/Canon/	ScanGear MF
	/Library/Application Support/Canon/	WMCLibrary.framework
	/Library/Application Support/Canon/	WMCReg.plist
	/Library/Image Capture/Devices/*	Canon MFScanner.app*
	/Library/Image Capture/TWAIN Data Sources/	Canon XXX.ds (XXX may differ depending on the model.)

* Only when using Mac OS X 10.6

7 Close all windows open.

8 Restart the computer.

Contacting the Service Center

When you have a problem with your machine and you cannot solve it even if you refer to the manuals or online help, please contact our Canon Authorized Service Facilities or the Canon Customer Care Center at 1-800-OK-CANON between the hours of 8:00 A.M. to 8:00 P.M. EST for U.S.A. and 9:00 A.M. to 8:00 P.M. EST for Canada Monday through Friday. Canadian customer support is available on-line at www.canon.ca or by calling 1-800-OK-CANON Monday through Friday from 9:00 A.M. to 8:00 P.M. EST

Disclaimers

The information in this document is subject to change without notice.

CANON INC. MAKES NO WARRANTY OF ANY KIND WITH REGARD TO THIS MATERIAL, EITHER EXPRESS OR IMPLIED, EXCEPT AS PROVIDED HEREIN, INCLUDING WITHOUT LIMITATION, THEREOF, WARRANTIES AS TO MARKETABILITY, MERCHANTABILITY, FITNESS FOR A PARTICULAR PURPOSE OF USE OR NON-INFRINGEMENT. CANON INC. SHALL NOT BE LIABLE FOR ANY DIRECT, INCIDENTAL, OR CONSEQUENTIAL DAMAGES OF ANY NATURE, OR LOSSES OR EXPENSES RESULTING FROM THE USE OF THIS MATERIAL.

Copyright

© 2011 by Canon Inc. All rights reserved.

No part of this publication may be reproduced, transmitted, transcribed, stored in a retrieval system, or translated into any language or computer language in any form or by any means, electronic, mechanical, magnetic, optical, chemical, manual, or otherwise, without the prior written permission of Canon Inc.

Trademarks

Canon, the Canon logo, and imageCLASS are registered trademarks of Canon Inc. in the United States and may also be trademarks or registered trademarks in other countries.

Apple, Mac OS, and Macintosh are trademarks or registered trademarks of Apple Inc. in the U.S. and/or other countries.

Microsoft, Windows and Windows Vista are either trademarks or registered trademarks of Microsoft Corporation in the United States and/or other countries.

All other product and brand names are registered trademarks, trademarks or service marks of their respective owners.



CANON INC.

30-2, Shimomaruko 3-chome, Ohta-ku, Tokyo 146-8501, Japan

CANON MARKETING JAPAN INC.

16-6, Konan 2-chome, Minato-ku, Tokyo 108-8011, Japan

CANON U.S.A., INC.

One Canon Plaza, Lake Success, NY 11042, U.S.A.

CANON EUROPA N.V.

Bovenkerkerweg, 59-61, 1185 XB Amstelveen, The Netherlands

CANON CHINA CO. LTD.

15F Jinbao Building No.89, Jinbao Street, Dongcheng District, Beijing 100005, PRC

CANON SINGAPORE PTE LTD

1 HarbourFront Avenue, #04-01 Keppel Bay Tower, Singapore 098632

CANON AUSTRALIA PTY LTD

1 Thomas Holt Drive, North Ryde, Sydney NSW 2113, Australia

CANON GLOBAL WORLDWIDE SITES

<http://www.canon.com/>

