

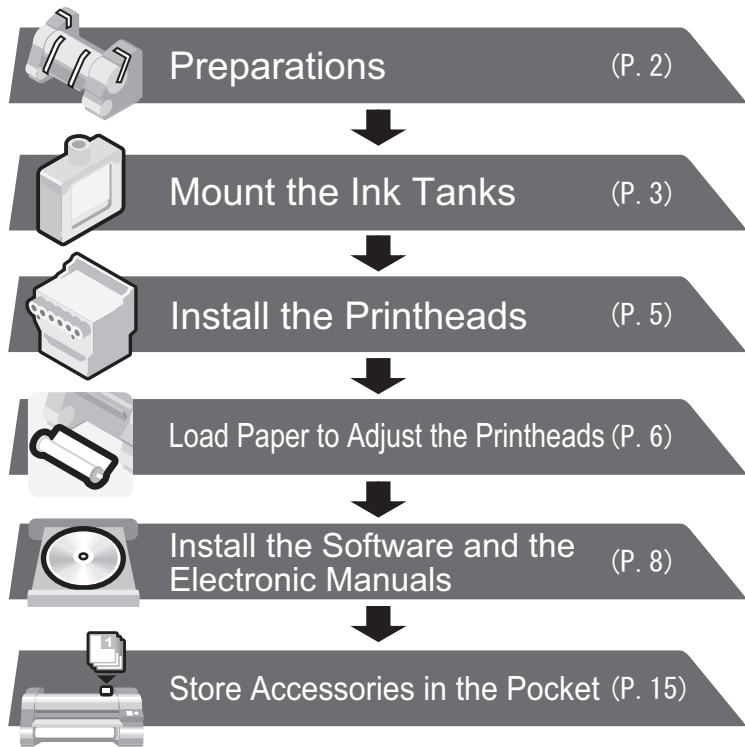
Setup Guide

Introduction

Read this manual before attempting to operate the printer.
Keep this manual in a handy location for future reference.

Overview of Setup

These are the steps in printer installation.



• Even if you do not use the printer driver, be sure to install **Media Configuration Tool** from the provided **User Software CD-ROM**. With **Media Configuration Tool**, the paper types that are available in your area can be registered to the printer. For instructions on installation, refer to "Install the Software and the Electronic Manuals" on page 8. (In Windows, select **Install Individual Software** in the **Setup Menu** window to install **Media Configuration Tool** only.)



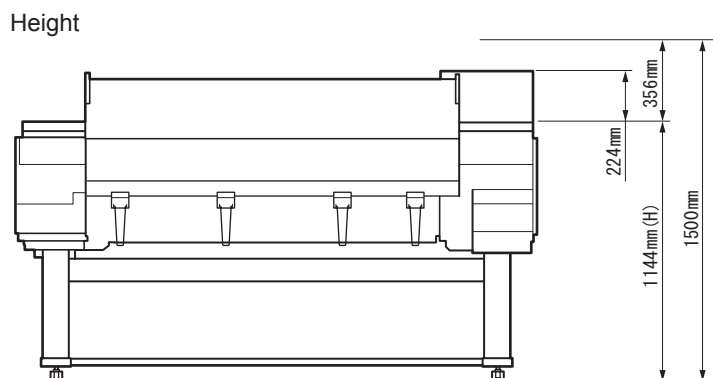
• We recommend doing a color calibration after completing the setup to adjust variations in the colors.

Details for each step are given in this Setup Guide. Simply follow the instructions to install the printer.

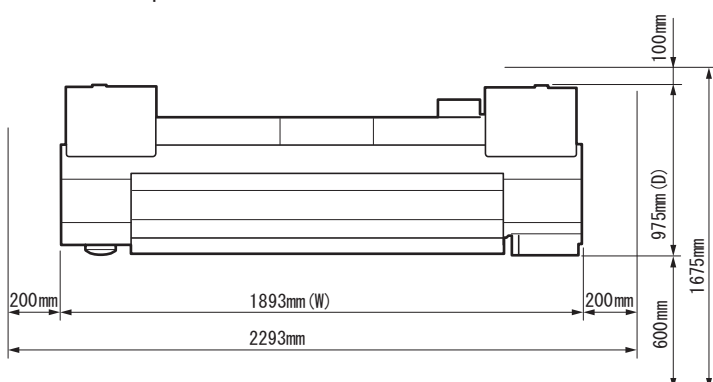
If an error message is displayed during setup or other problems occur, refer to "Responding to Messages".

Space Required for Installation

An area that is larger than the dimensions shown below is needed to install the printer.



Width and depth



• When using the output stacker in the front ejection position, provide at least 1400 mm (55 inches) of unobstructed space in front of the printer.

The Manuals Supplied with This Printer

After installing the printer as shown in this Setup Guide, refer to the manuals for instructions on operation and maintenance.

Printed Manuals

Basic Guide

The Basic Guide contains the following information:

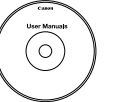
- Loading paper, Replacing the consumables, Control Panel menus, and others
- Troubleshooting tips and Error messages
- Preparations for transferring the printer



Electronic Manuals

User's Guide

This guide describes advanced usage of the printer such as paper saving tips, how to print a poster and banner with the supplied software and print quality adjusting method, in addition to the basic instructions for printing on roll paper or cut sheet.



Paper Reference Guide

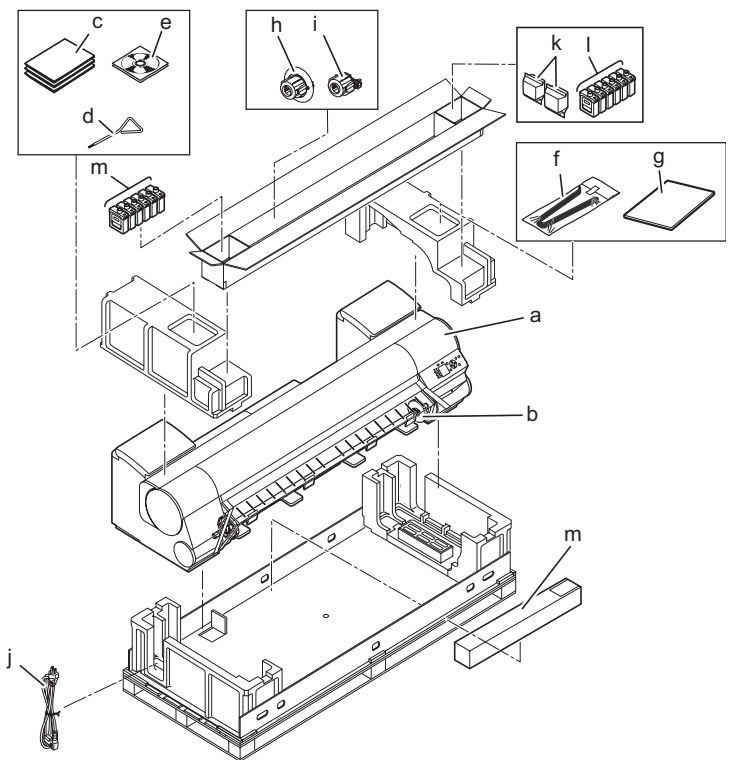
This guide describes about the types and specifications of the available media on the printer.

To refer to the electronic manuals

- Windows : Double-click the **iPFxxxx Support** desktop icon. (iPFxxxx indicates the printer model.)
- Mac OS X : Click the **iPF Support** icon in the **Dock** (**Launchpad** in OS X v10.7 and later).



Package Contents



- a. Printer
- b. Roll holder
- c. Set of manuals
- d. Allen wrench
- e. Set of CD-ROMs
- f. Ejection support (x4)
- g. Setup Guide (this document)
- h. 3-inch paper core attachment #2
- i. 3-inch paper core attachment #1
- j. Power cord
- k. Printhead (x2)
- l. Starter ink tanks BK, MBK, C, M, Y, PM, PC, GY, PGY, R, G, B
- m. Adjustment paper

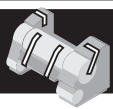
Other documentation may also be included in the package.



- Some items are included with the printer but not described in this manual. Keep these items in a safe place after setup because they are used in various printing applications.
- For instructions on the included items not described in this manual, refer to the User's Guide.
- A cable to connect the printer to a computer is not provided with the printer.

- Canon, the Canon logo, and imagePROGRAF are trademarks or registered trademarks of CANON INC.
- Microsoft and Windows are trademarks of Microsoft Corporation, registered in the U.S. and other countries.
- Macintosh is a trademark of Apple Inc., registered in the U.S. and other countries.
- All other trademarks or registered trademarks described in this Setup Guide are the property of their respective owners.



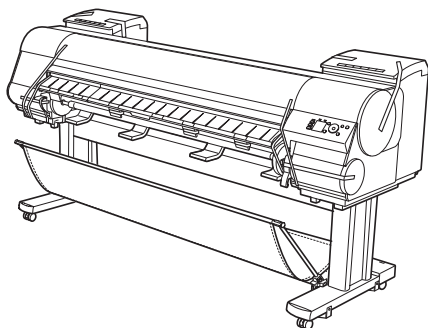


Preparations

Prepare the printer for use by installing it and connecting the power cord.

1

Install the printer.
Assemble the stand and install the printer referring to the Printer Stand Setup Guide included with the stand.

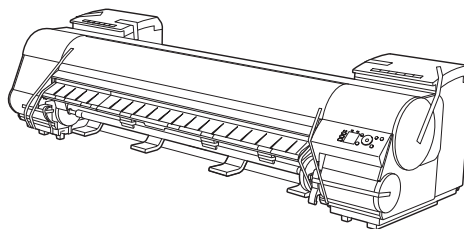


Caution

- It weighs approximately 100 kg by itself. Moving the printer requires at least six people to lift it from both sides. Be careful to avoid back strain and other injuries.

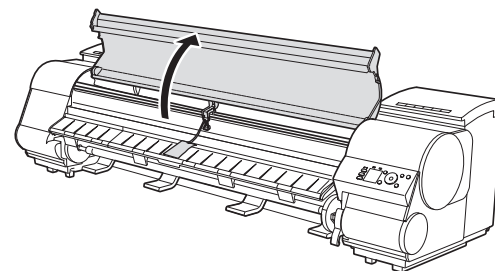
2

Remove the tape and other packing materials attached to the printer.



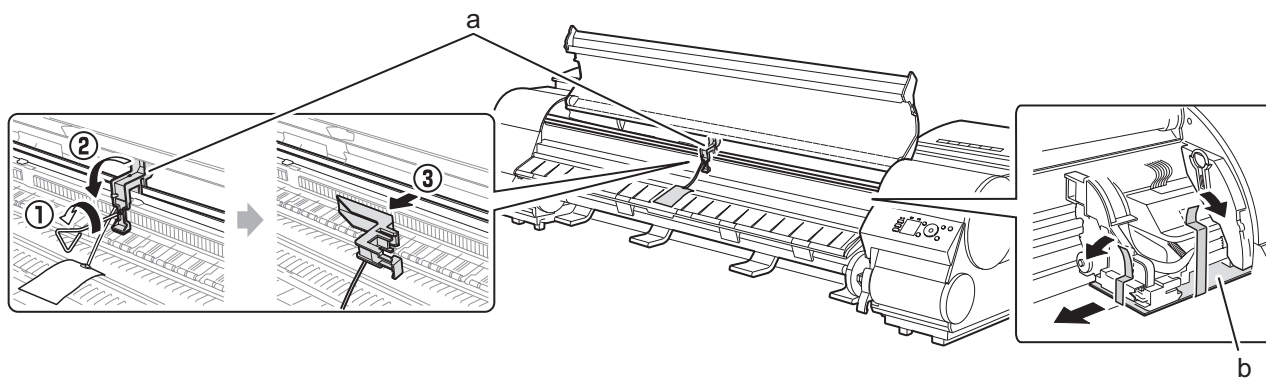
3

Open the top cover.



4

Use the Allen wrench to loosen the screw of the belt stopper (a) and then remove the screw from the belt stopper. Rotate the belt stopper to the left to remove it. Pull the carriage spacer (b) in the direction indicated by the arrow to remove it.

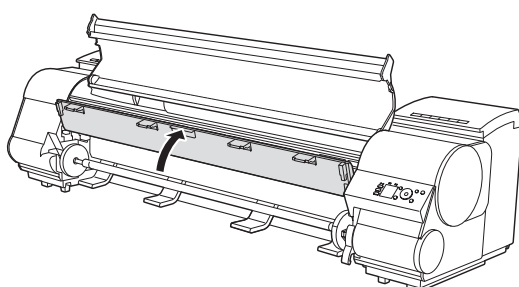


MEMO

- The **Belt Stopper**, screw, carriage spacer, and **Allen Wrench** are needed when moving the printer to another location later. Keep the **Belt Stopper**, screw, carriage spacer, and **Allen Wrench** which have been removed. Neglecting to attach the **Belt Stopper** and carriage spacer may cause damage to the printer when moving the printer to another location.
- After opening the **Top Cover**, **Cleaning Brush** is stored on the right. Take out the brush when cleaning inside the **Top Cover**.

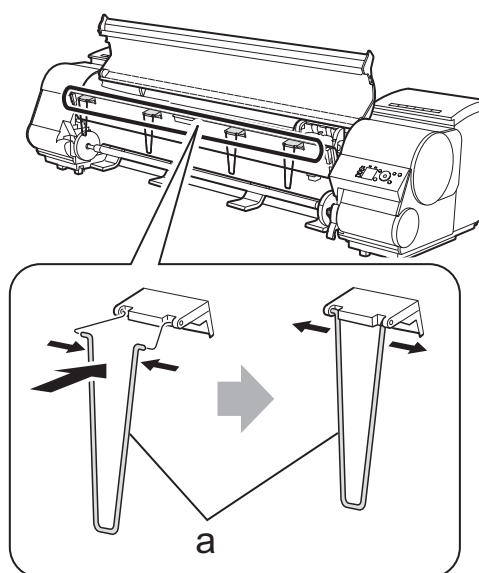
5

Lift the ejection guide.



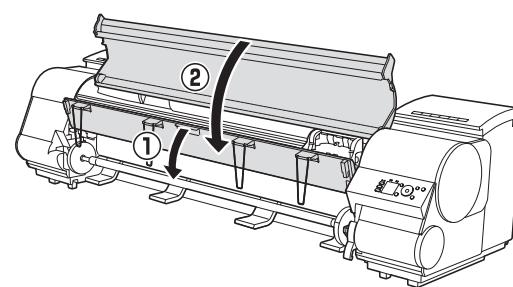
6

Attach the four ejection supports (a) to the back of the ejection guide.



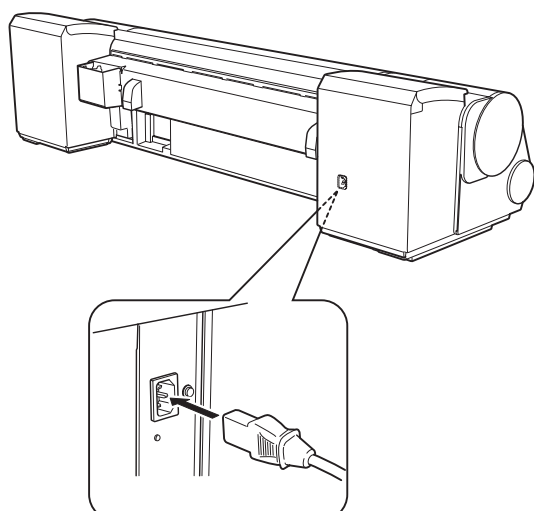
7

Close the ejection guide and the top cover.



8

Plug the power cord into the power supply connector on the back of the printer and plug the other end into an electric outlet.



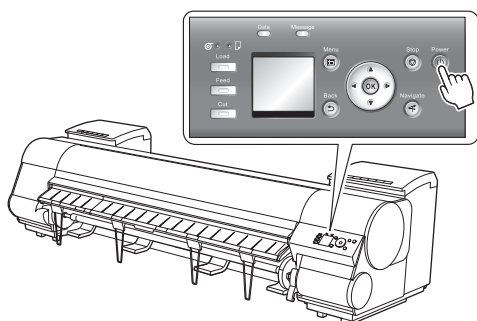


Mount the Ink Tanks

Mount the 12 ink tanks.

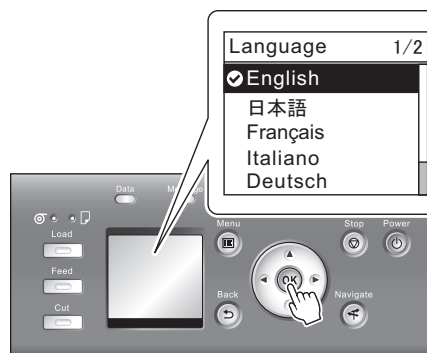
1

Press the **Power** button to turn on the printer.



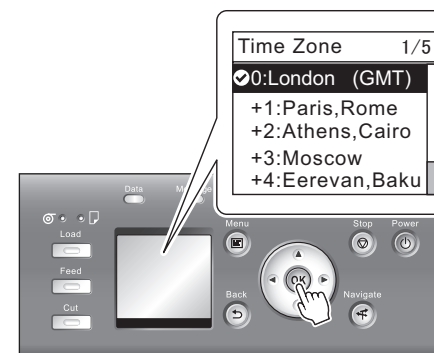
2

When the following screen appears, use the **▲** and **▼** keys to select a language and press **OK**.



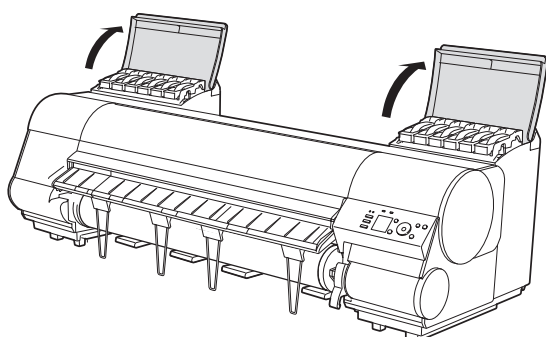
3

Select your local time zone and press **OK**.



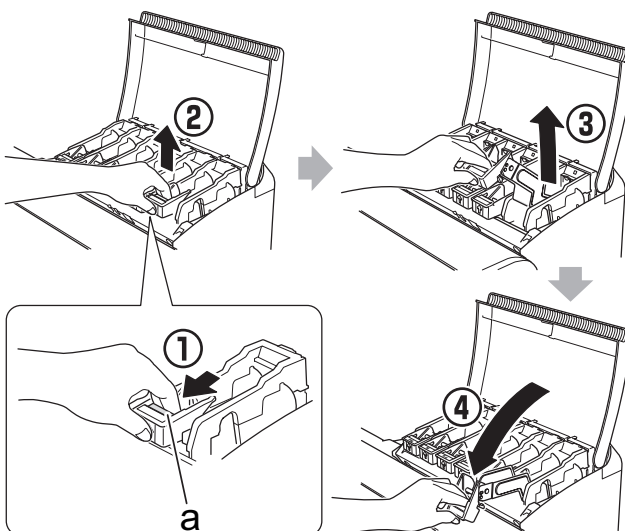
4

Instructions on ink tank installation are shown on the display screen. Open the ink tank covers as instructed.



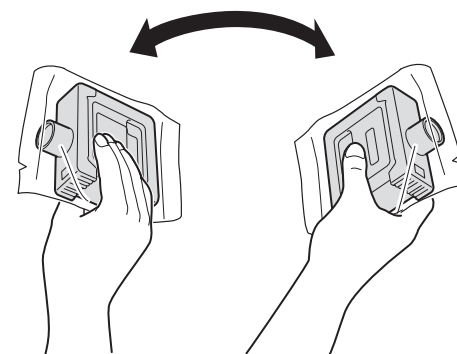
5

Raise the stopper (a) of the ink tank lock lever for the color you are mounting. After raising the ink tank lock lever as far as possible, pull it forward.



6

Shake each ink tank gently 7 to 8 times before opening its pouch.



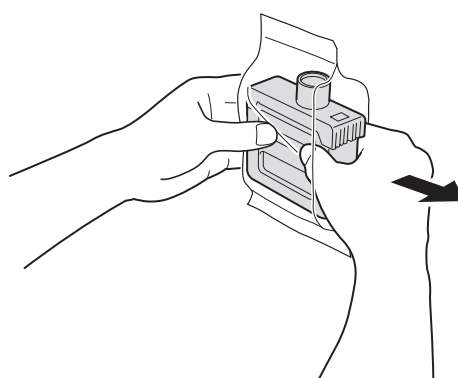
• Failure to shake the ink tanks may result in reduced print quality because ink ingredients have settled on the bottom of the tank.



• Press down on the ink tank lock lever until it locks.
• Make sure the ink tank lock lever stays in the locked position.

7

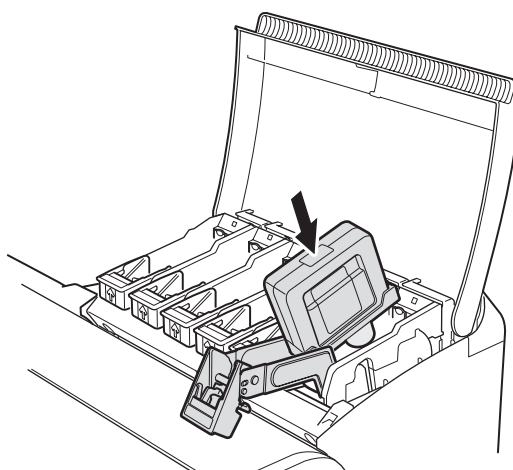
Open the pouch and remove the ink tank.



• Never touch the ink holes or metal contacts. Touching these parts may cause stains, damage the ink tank, and affect print quality.
• Avoid dropping the ink tank after removing it from the pouch. Otherwise, ink may leak and cause stains.
• Do not remove ink tanks to shake them after they have been mounted. Doing so may cause ink to spill.

8

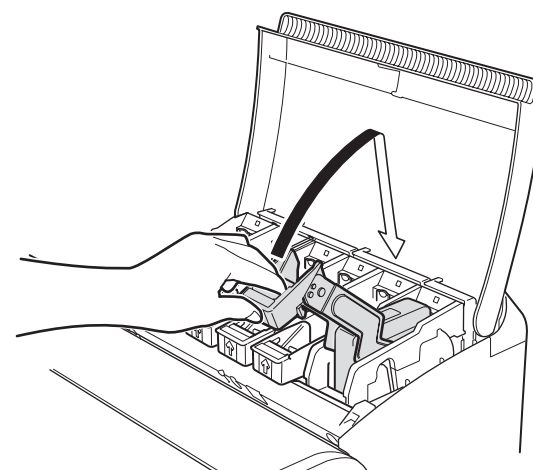
Orient the ink tanks and mount them in the holders with ink holes down as shown in the figure.



• An ink tank cannot be mounted in the holder if it is not oriented correctly for the color.
• Do not try to force an ink tank into the holder if it does not go in normally. Check the color indicated on the label affixed to the ink tank lock lever and the ink tank orientation, and then try mounting the tank into the holder again.

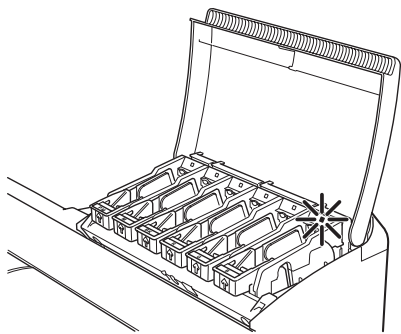
9

After raising the ink tank lock lever as far as possible, press it back down until it clicks into place.



10

Make sure the ink lamp lights red.

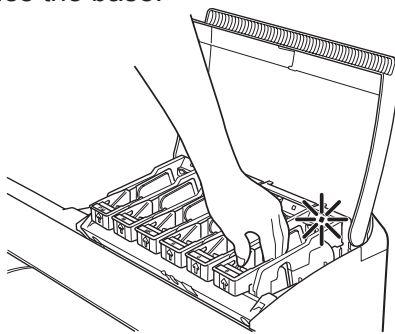


Important

• If the ink lamp does not light, repeat steps 5 and 9.

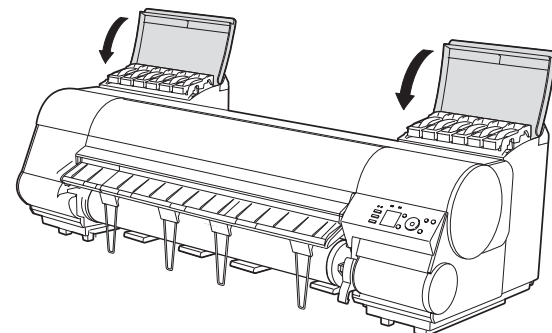
11

Check that the ink lamp is alight, and then push the ink tank more strongly until it touches the base.



12

Repeat steps 5 to 11 to mount each of the Ink Tanks. Close the ink tank covers.



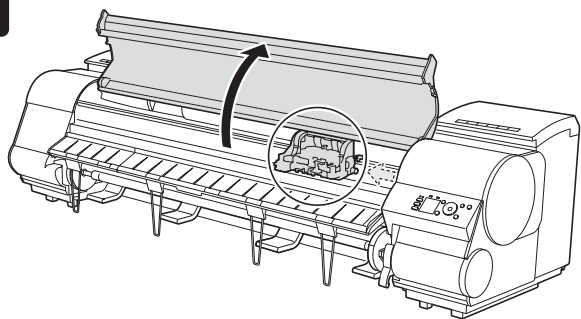


Install the Printheads

Install both printheads.

1

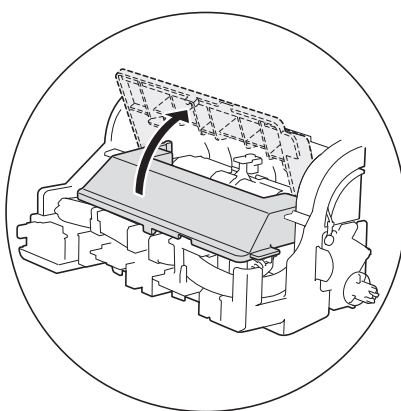
When the display screen shows **Open top cover.**, open the top cover.



Instructions on printhead installation are shown on the display screen.

2

Lift the carriage cover to open it fully.



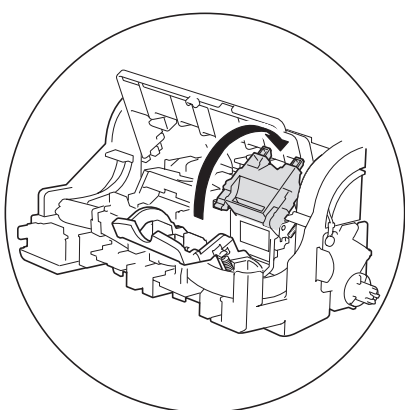
3

Pull the printhead fixer lever forward all the way to open it completely.



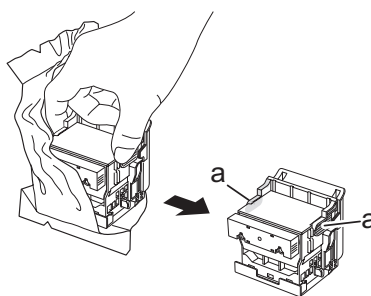
4

Lift the printhead fixer cover to open it fully.



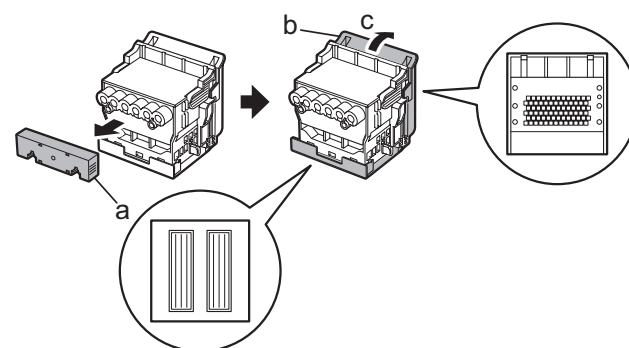
5

Hold the printhead by the grips (a) as you remove it from the pouch.



6

Remove the orange protective part (a). Remove the other orange protective part (b) while holding the grip (c).

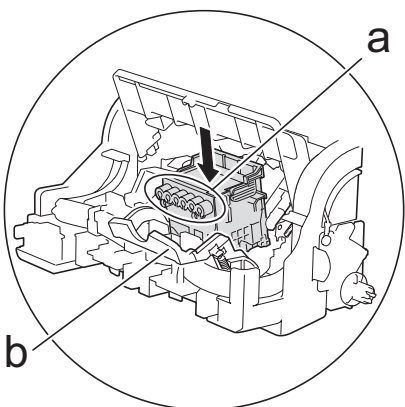


Important

- Never touch the parts covered by the protective parts. Doing so may damage the printhead and affect printing quality.
- The printhead contains ink, so be careful not to spill it once the protective parts are removed.
- Do not reattach the protective parts after removing them. Dispose of these materials according to local regulations.

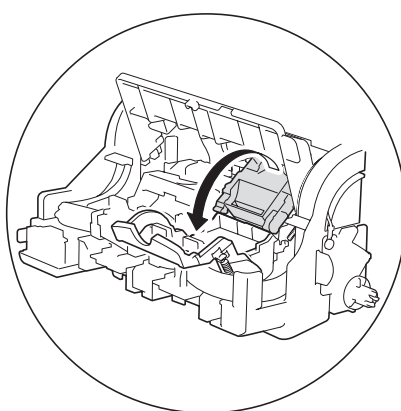
7

Insert the printhead into the carriage (b) with the ink holes (a) up and facing the front of the printer as shown in the figure. Carefully push the printhead firmly into the carriage (b), ensuring that the parts that were covered by the protective parts do not touch the carriage (b).



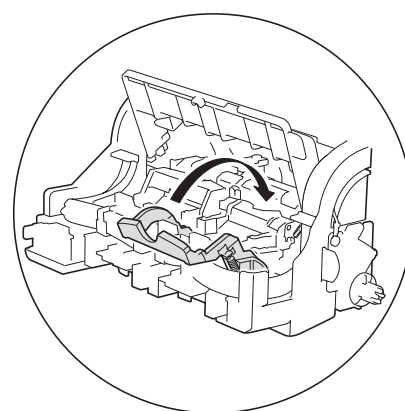
8

Pull the printhead fixer cover down toward the front to lock the printhead in place.



9

Push the printhead fixer lever all the way back.

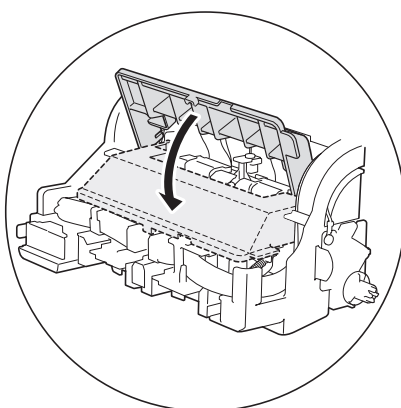


10

Repeat steps 3 to 9 to install the second printhead set.

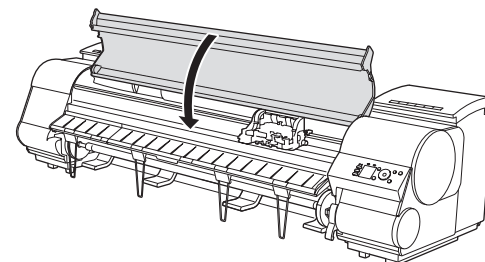
11

Pull the carriage cover forward.



12

Close the top cover.





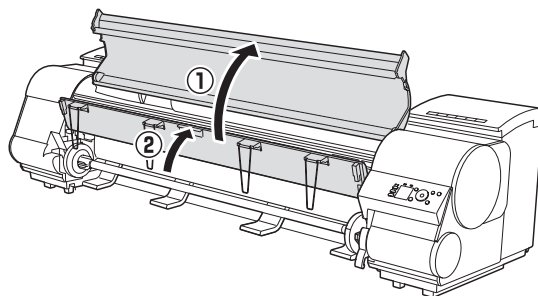
Load Paper to Adjust the Printheads

Load the provided adjustment paper and adjust the Printheads.

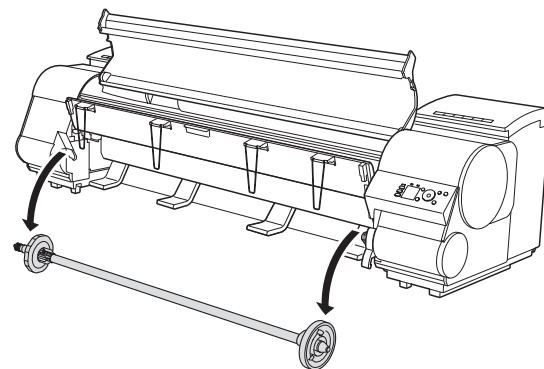
- 1** Select type of paper for printhead adj. is shown on the display screen. Use the ▲ and ▼ keys to select **Roll Paper** and then press **OK**.



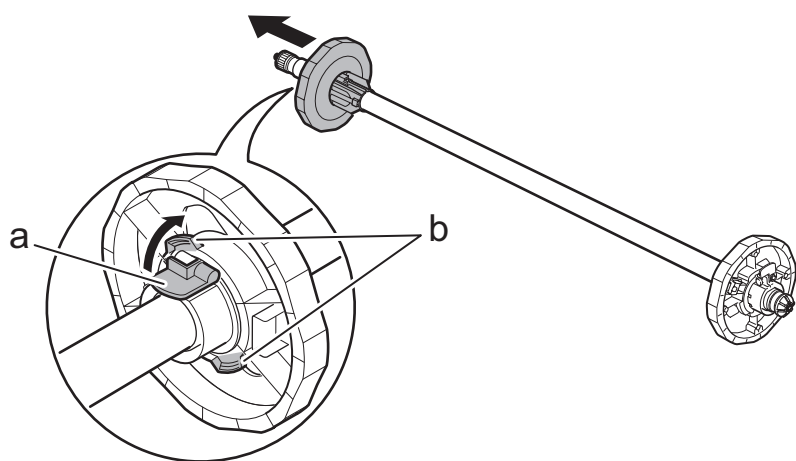
- 2** Open the top cover and raise the ejection guide.



- 3** Remove the roll holder from the printer.

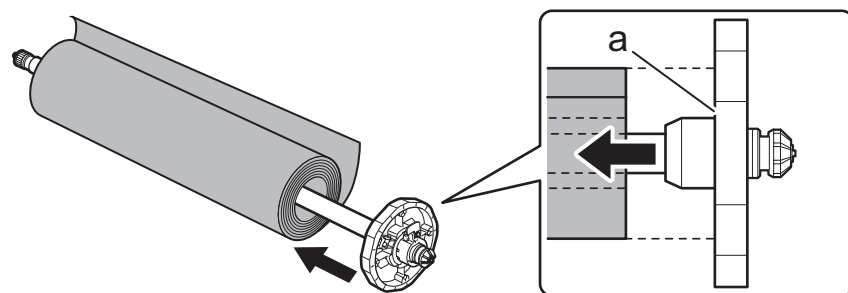


- 4** Raise the holder stopper lever (a) from the shaft side to unlock the stopper. While holding the holder stopper in the position indicated by (b), remove the holder stopper from the roll holder.



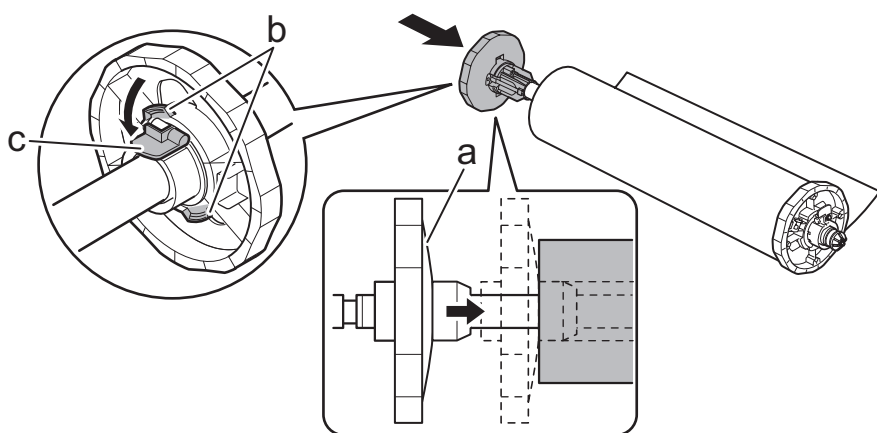
- Important** • We recommend wearing clean cotton gloves when handling rolls of paper to protect the printable surface.

- 5** With the leading edge of the roll of paper towards the front as shown in the figure, insert the roll holder from the right side of the roll of paper. Insert the roll holder all the way until the paper is touching the flange (a) of the roll holder.



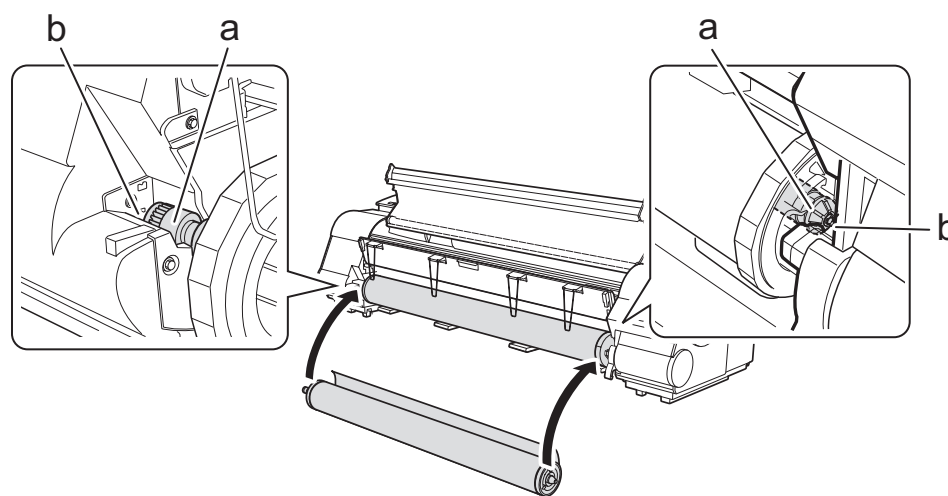
- Important**
- Insert the roll holder as far as it will go so there is no gap between the paper and the roll holder flange. A gap can cause the paper to feed irregularly.
 - Do not place a roll of paper on a desk or other flat surface where it may roll off. A falling paper roll creates the risk of personal injury.
 - Do not allow the roll holder to be subjected to strong impact when loading a roll of paper. Strong impact can damage the roll holder.

- 6** As shown in the figure, slide the holder stopper onto the roll holder from the left. Holding the holder stopper at the position in the figure marked (b), press until the holder stopper flange (a) is securely in contact with the paper. Lower the holder stopper lever (c) to the shaft side to lock it.



- Important**
- Insert the roll holder as far as it will go so there is no gap between the paper and the roll holder flange. A gap can cause the paper to feed irregularly.
 - Remove all wrinkles and curls from the paper, if any, before loading it.

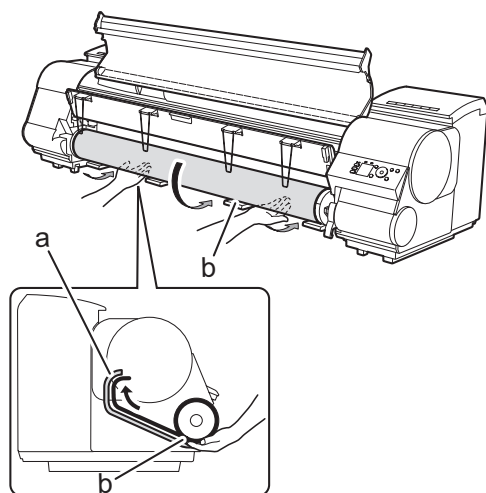
- 7** With the side of the roll holder with the white gear facing the same direction as the roll holder slot with the white gear, set the roll holder shaft (a) into the left and right guide grooves (b) of the roll holder slots. Allow the shaft to slide into the guides as far as possible.



- Important**
- When setting the shaft into the guides, take care so the roll of paper does not fall and created the risk of personal injury.
 - Be careful to not pinch your fingers between the shaft of the roll holder shaft (a) and the guide grooves (b) when loading a roll of paper.

8

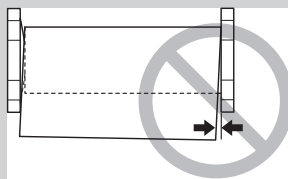
Pull out the paper so it is even on both sides and insert it into the feed slot (b), and feed it until it contacts the paper retainer (a).



The paper feeds automatically until it contacts the paper retainer.

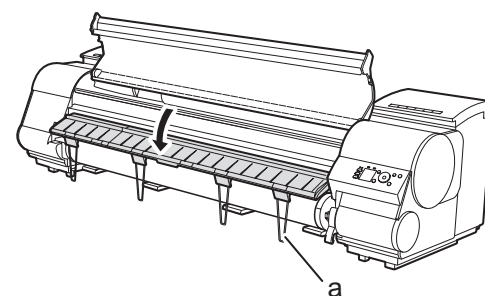


- Take care to avoid soiling the printing surface when removing rolls of paper. A soiled printing surface can affect printing quality.
- Remove all wrinkles and curls from the paper, if any, before loading it.
- When loading paper, make sure there is no gap between the right side of the roll and the roll holder.



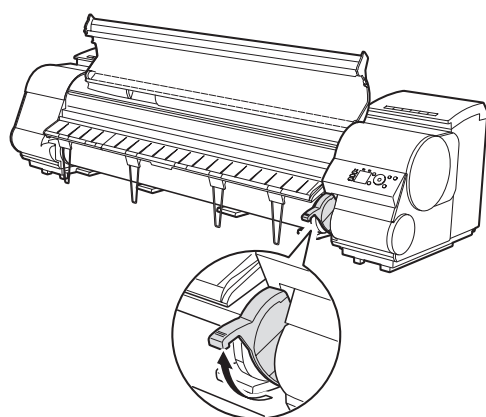
9

Lower the ejection guide. Lower the ejection guide carefully, taking care that the ejection supports (a) do not touch the paper. If you lower it vigorously, the ejection supports (a) may touch the roll paper and scratch the printing surface.



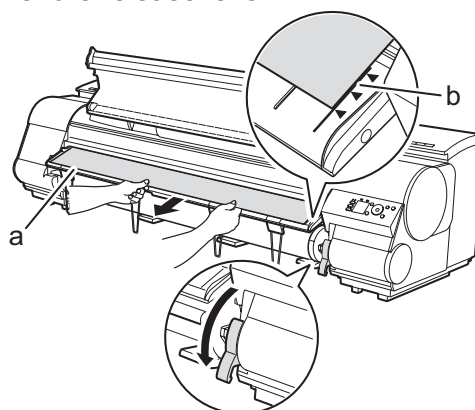
10

While holding the leading edge of the paper roll, raise the release lever.



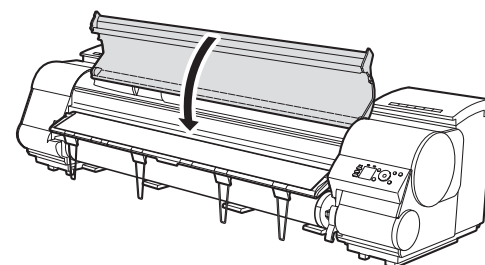
11

Holding the leading edge of the paper with both hands, gently pull it to the ejection guide (a) as you ensure that the left and right sides remain even and that the right edge of the paper remains parallel with the orange paper alignment line (b). Next, lower the release lever.



12

Close the top cover.



After a roll of paper is loaded, the display screen automatically display a paper type selection menu and the printer beeps.



- Be sure to perform steps 10 and 11. If paper cannot feed straight or becomes curled, it may rub against the print head or be jammed.
- Do not pull paper in an attempt to force it to align with the paper alignment line (b). Doing so may cause the paper to not feed straight.

13

The screen for selecting the paper type is shown on the display screen. Press ▲ or ▼ to select the type of paper loaded in the printer. Select **Coated Paper** and then press **OK**. Then from the menu that appears, select **HW Coated** and then press **OK**.



Paper begins feeding.



- If **Paper loaded crooked.** appears on the display screen, refer to steps 10 and 11 to reload the roll of paper. If the error occurs again after you reload the paper, remove the roll holder from the printer and check to make sure that the roll of paper is in close contact with the roll holder flange as described in step 5.

14

Once feeding the paper is finished, the printer automatically starts charging the system with ink and adjusting the printhead. Charging the system with ink and adjusting the printhead for the first time takes about 40 minutes. Install the software and electronic manuals on your computer while the printer is working. (See "Install the Software and the Electronic Manuals" on page 8)



- Charging the system with ink fills the system between the ink tanks and printheads. In addition, cleaning is performed to keep the printer in optimal condition. This may cause the remaining ink indicator and maintenance cartridge capacity indicator to drop to about 80 % (the remaining ink indicator may drop to about 40 % for the starter ink tank), but this is not a problem with the printer.

When printhead adjustment is finished, **Ready** appears on the display screen.



- After you have finished setting up the printer and installing the software and electronic manuals, we recommend performing color calibration. Color calibration compensates for changes in color from individual variation and aged deterioration of the printer, ensuring better color consistency. Perform color calibration using the provided adjustment paper, which is compatible with this process. For information on other compatible paper, refer to the Paper Reference Guide. During color calibration, on the control panel's display screen, open [] (settings/adj. tab) and select **Adjust Printer - Calibration - Auto Adjust**. The process of color calibration takes about 10 minutes.
- If you use the color calibration for color adjustment, it is useful to set the function to notify the execution period (Prompt Execution). For details of the function, refer to "Using Color Calibration for Color Adjustment" in User's Guide.



Install the Software and the Electronic Manuals

Windows

You can print from Windows via USB or TCP/IP (network) connections.

The installation procedure varies depending on how your printer is connected. Install the software and the electronic manuals by following instructions below.

If you connect the printer with a USB cable, refer to "For USB connections" on page 8.

If you connect the printer with TCP/IP (network), refer to "For TCP/IP (network) connections" on page 10.



Important

- Installation requires administrative rights (such as those of Administrator). Be sure to log on using an account with administrative rights before installation.

<Compatible Operating Systems>

32-bit: Windows 7, Windows Vista, Windows Server 2003 R2, Windows Server 2003, Windows XP

64-bit: Windows 7, Windows Vista, Windows Server 2008 R2, Windows Server 2008, Windows Server 2003 R2, Windows Server 2003



MEMO

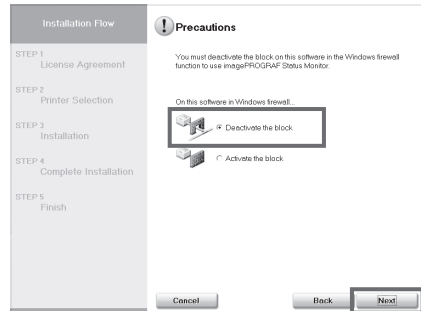
- For the Windows OS, use the latest version of Service Pack.



MEMO

The following screen may be displayed during installation depending on the security settings of your computer.

- Select **Deactivate the block** and click **Next**.



For USB connections

Install the software

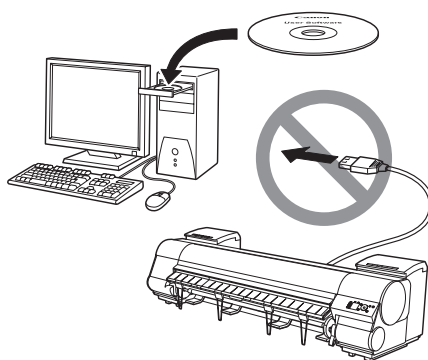


Important

- Use a USB cable that conforms to the Hi-Speed USB specification.
- Connect the USB cable to the printer according to the on-screen instructions during installation of the printer driver. If you connect the USB cable before installing the printer driver, the printer driver may not be installed correctly.

1

After making sure the printer is not connected to the computer, turn the computer on. Insert the provided **User Software CD-ROM** for your operating system in the CD-ROM drive.



2

In the **Setup Menu** window, click **Install Printer Driver**.



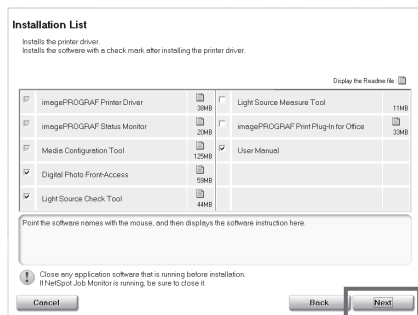
MEMO

- To choose a different language, click **Language**.

3

Select the software to install in the **Installation List** window, and then click **Next**.

Point the mouse pointer at a software name to display a summary of the software.



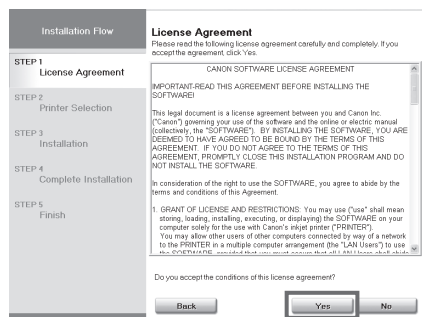
4

In the **Select Country or Region of Use** window, select the country or region of use and click **Next**.



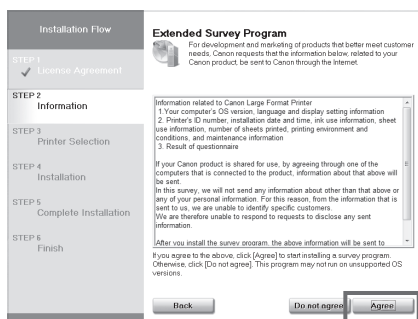
5

After reading the license agreement, click **Yes**.



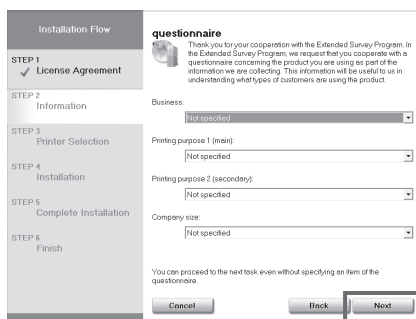
6

If you can agree Extended Survey Program, click **Agree**.



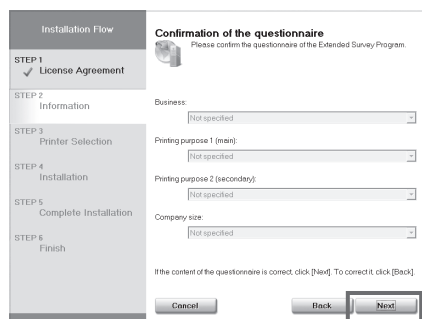
7

If you can respond to the questionnaire, click **Next**.

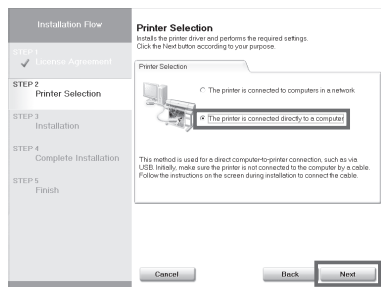


8

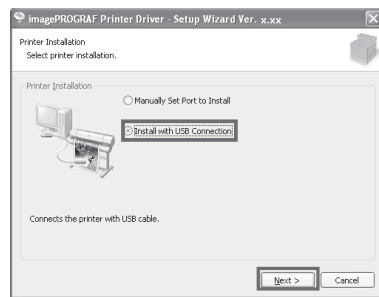
Confirm your questionnaire responses, and click **Next**.



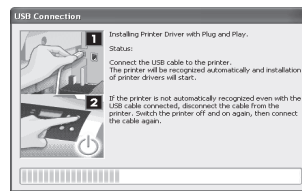
9 In the **Printer Selection** window, select **The printer is connected directly to a computer** and click **Next**.



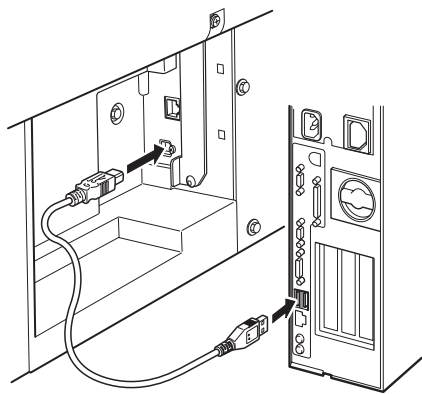
10 In the **Printer Installation** dialog box, select **Install with USB Connection**, and click **Next**.



11 When the following dialog box is displayed, make sure the printer is on and use the USB cable to connect the printer to the computer.

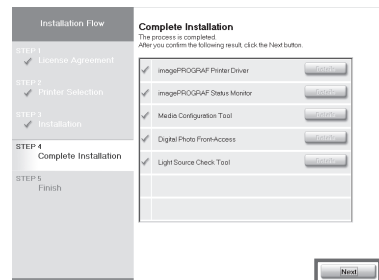


MEMO • If a warning message is displayed, click **Retry** to try again.

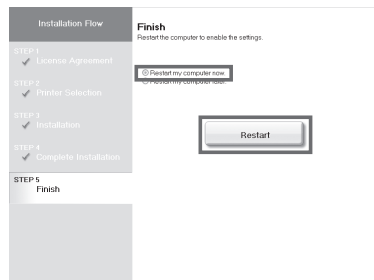


Important • Be careful not to insert the USB cable into the LAN port.

12 After reviewing the installation results in the **Complete Installation** window, click **Next**.



13 In the **Finish** window, select **Restart my computer now** and click **Restart**.

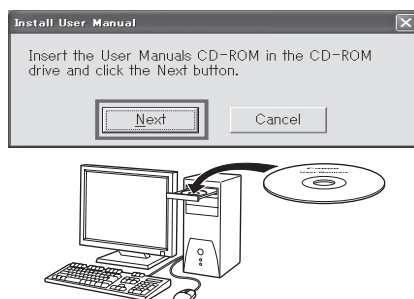


14 When you restart the computer, the software settings are enabled. The software installation is now completed. An **iPFxxxx Support** desktop icon is created after installation. (iPFxxxx represents the printer model.)

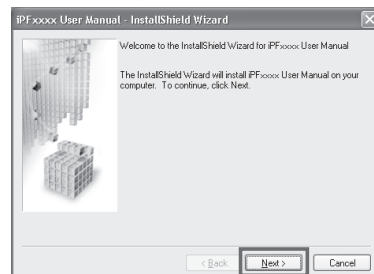
Next, install the electronic manuals.

Install the electronic manuals

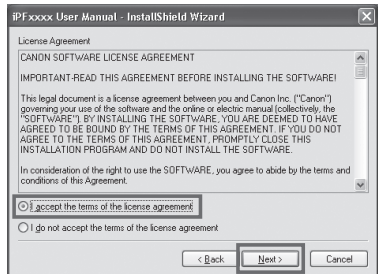
15 When the **Install User Manual** dialog box is displayed, insert the provided **User Manuals CD-ROM** in the CD-ROM drive and click **Next**.



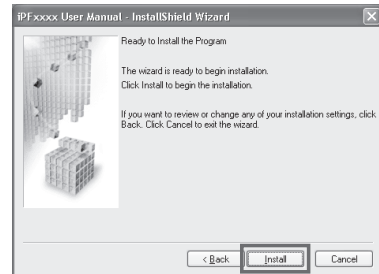
16 Click **Next**.



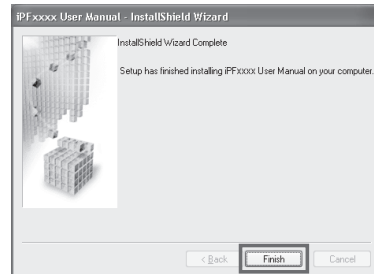
17 After reading the software license agreement, select **I accept the terms of the license agreement**, and then click **Next**.



18 Click **Install**. The installation process begins.



19 After installation is completed, click **Finish**.

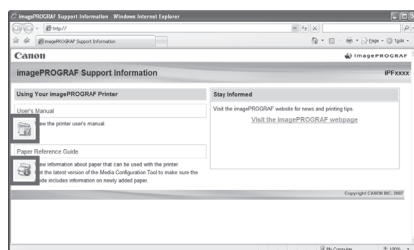


The electronic manuals installation is now completed.

20 Double-click the **iPFxxxx Support** desktop icon.



21 When clicking the **User's Manual** button, the User's Guide will be opened and clicking the **Paper Reference Guide** button, the Paper Reference Guide will be opened.



For TCP/IP (network) connections

Install the software

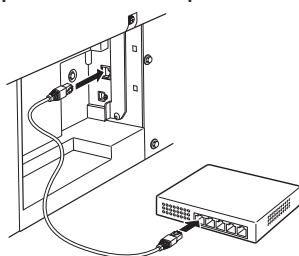


Important

- If the printer is already connected to the network, confirm the IP address assigned to the printer. Ask your network administrator for further information.

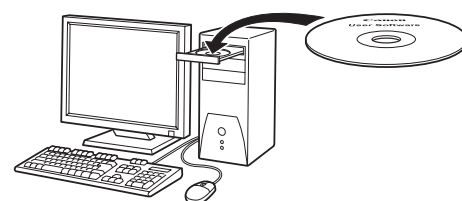
1

Use the LAN cable to connect the LAN port on the back of the printer to the hub port. If the printer is already connected to the network, proceed to step 2.



2

Make sure the printer is on. Turn the computer on and insert the provided **User Software CD-ROM** for your operating system in the CD-ROM drive.



MEMO

- If the printer is on, the Link indicator under the LAN port lights.

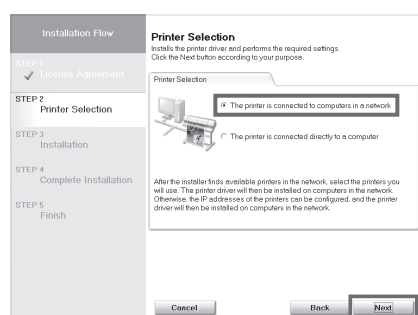
1000Base-T connection	The top and bottom LEDs light.
100Base-TX connection	The LED on the bottom lights green.
10Base-T connection	The LED on the top lights orange.

3

Perform procedures of steps 2-8 on page 8.

4

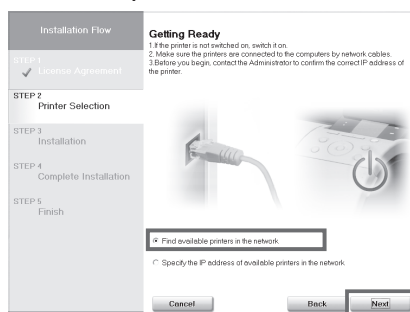
In the **Printer Selection** window, select **The printer is connected to computers in a network** and click **Next**.



5

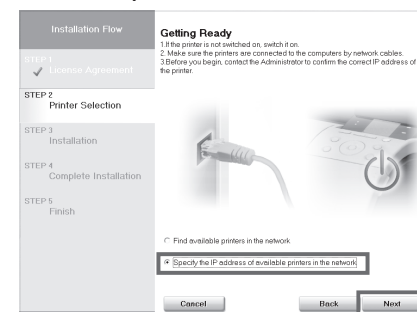
When searching the available printer on the network

After reading the precautions in the **Getting Ready** window, select **Find available printers in the network** and click **Next**. Proceed to step 6.



When entering the printer's IP address manually

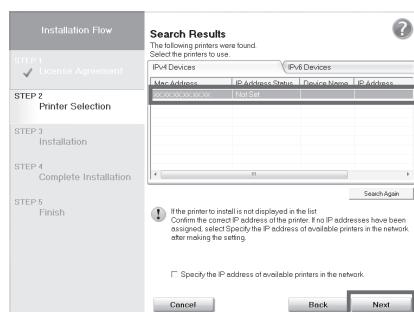
After reading the precautions in the **Getting Ready** window, select **Specify the IP address of available printers in the network** and click **Next**. Proceed to step 8.



6

When searching the available printer on the network

Available printers are listed in the **Search Results** window. Select a printer from the list on either their **IPv4 Devices** or **IPv6 Devices** tabs and click **Next**.



Select the printer with the **IP Address Status** is **Available**, and then click **Next** to start installation. Proceed to step 9 in this case.



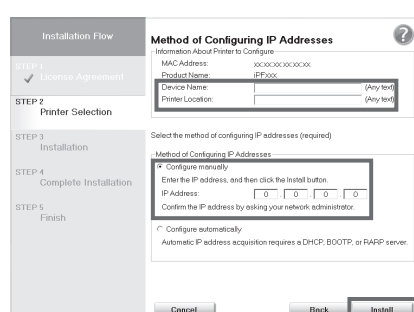
MEMO

- The **IPv6 Devices** tab is displayed in Windows 7, Windows Vista, Windows Server 2008 R2, and Windows Server 2008.
- If the printer you want to use is not displayed in the list on the **IPv6 Devices** tab, connect via **IPv4** instead.
- If the printer you want to use is not displayed in the list of printers on the **IPv4 Devices** tab, refer to "When the printer cannot be found on the network" on page 11 to setup and configure an IP address for the printer.

7

When searching the available printer on the network

In the **Method of Configuring IP Addresses** window, enter the IP address in **Configure manually**, under **Method of Configuring IP Addresses**. Click **Install** to start the installation process. Also enter your preferred name for the printer in **Device Name** and the installation location in **Printer Location** under **Information About Printer to Configure**, as desired. The installation process begins. Proceed to step 9.



Important

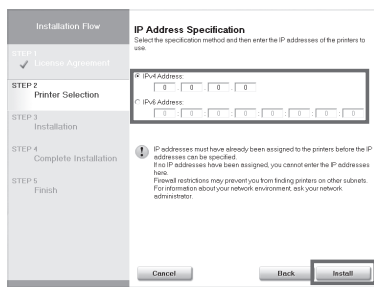
- If you use a DHCP server for automatic assignment of the printer's IP address, printing may no longer be possible after the printer is turned off and on. This is because a different IP address has been assigned. When using DHCP server functions, consult your network administrator and configure the settings in one of the following ways:
 - Configure the setting for dynamic DNS updating
In the printer menu, either set **DNS Dync update** to **On**, or activate the setting **Enable DNS Dynamic Update** in RemoteUI.
(→"Menu Settings", User's Guide)
(→"Configuring the Printer's TCP/IP Network Settings", User's Guide)
 - Configure the setting for assignment of the same IP address each time the printer starts up

8

When entering the printer's IP address manually

In the **IP Address Specification** window, select either **IPv4 Address** or **IPv6 Address** to enter the printer's IP address and click **Install**.

The installation process begins.



Important

• Ask your network administrator for the IP address, as needed.

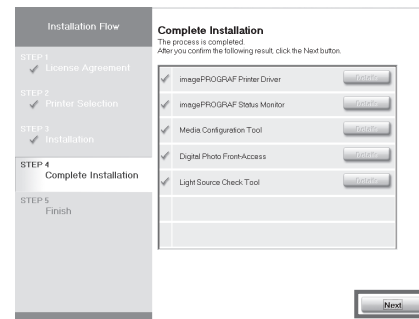


MEMO

• **IPv6 Address** is displayed in Windows 7, Windows Vista, Windows Server 2008 R2, and Windows Server 2008.

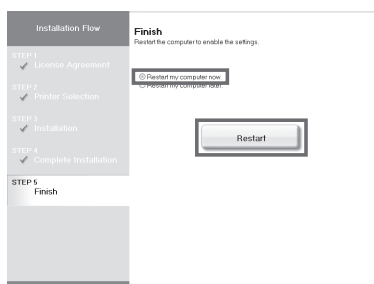
9

After reviewing the installation results in the **Complete Installation** window, click **Next**.



10

In the **Finish** window, select **Restart my computer now** and click **Restart**.



11

When you restart the computer, the software settings are enabled. The software installation is now completed. An **iPFxxxx Support** desktop icon is created after installation. (iPFxxxx represents the printer model.)

12

Next, follow steps 15-21 on page 9 to Install the electronic manuals

When the printer cannot be found on the network

If your printer cannot be found when connecting to the network for the first time, setup an IP address for the printer and then configure it on the printer.


When ink fills the system for the first time, after printhead adjustment is finished, specify the IP address on the printer's control panel.

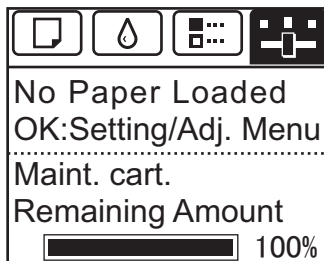


Important

• When ink fills the system for the first time, do not operate the printer until printhead adjustment is finished.

1

On the tab selection screen of the control panel, press the ◀ and ▶ keys to select  (settings/adj. tab) and press **OK**.



2

Use the ▲ and ▼ keys to select **Interface Setup** and press **OK**.

3

Use the ▲ and ▼ keys to select **TCP/IP** and press **OK**.

4

Enter the IP address. Navigate through the following menus using the ▲ and ▼ keys on the control panel.

1. Select **IPv4** and press **OK**.
2. Select **IPv4 Settings** and press **OK**.
3. Select **IP Address** and press **OK**.
4. Enter the IP address.



MEMO

How to enter IP addresses

1. Press the ◀ and ▶ keys to select a field for inputting values.
2. Use the ▲ and ▼ keys to input values.
 - Pressing ▲ increases the value by one.
 - Pressing ▼ decreases the value by one.
 - Holding down either the ▲ or ▼ keys continually increases or decreases the value.
3. Press **OK** once you have finished.

5

Press **Menu**.

6

Press **OK** on the registration confirmation message that appears. The IP address is set on the printer. Next, restart installation of the printer driver.

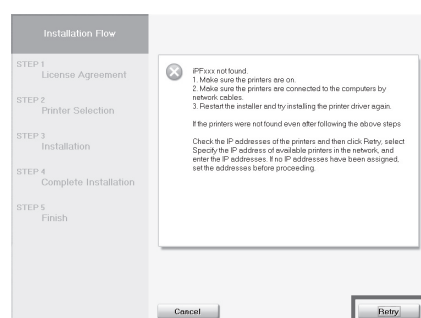
7

In the **Search Results** window, select **Specify the IP address of available printers in the network** and click **Next**. When the **IP Address Specifications** window appears, follow the instructions of "When entering the printer's IP address manually" in step 8 to 12 on page 11 to complete the installation of the software and electronic manuals.



MEMO

• If the following screen appears, click **Retry** and select **Specify the IP address of available printers in the network** on the next screen that appears.



Macintosh

You can print from Macintosh via USB or network connections such as Bonjour or IP.
Install the software and electronic manuals depending on your computer environment.

<Compatible Operating Systems>
Mac OS X v10.5.8 to v10.7

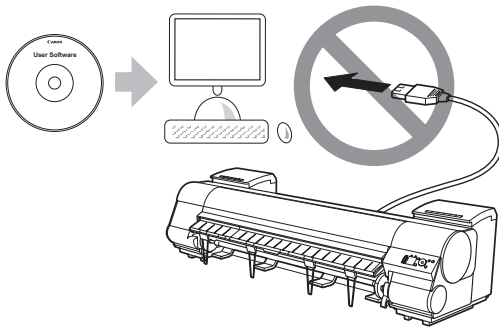
Install the software



- If you install the software, log onto the computer as an administrator.

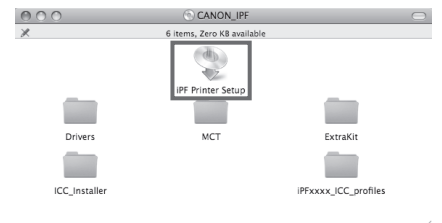
1

After making sure the printer is not connected to the computer, turn the computer on. Insert the provided **User Software CD-ROM** for your operating system in the CD-ROM drive.



2

On the desktop, double-click the CD-ROM icon and then the **iPF Printer Setup** icon.



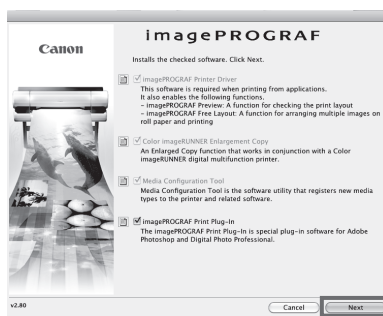
3

If the following screen is displayed, enter the user name and password of a user with administrative rights and click **OK**.



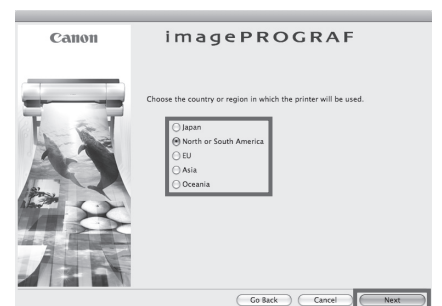
4

Select the software to install, and click **Next**.



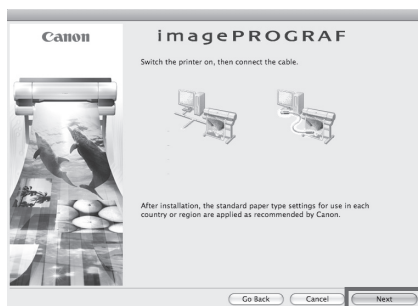
5

Select the country or region where the printer will be used and click **Next**.



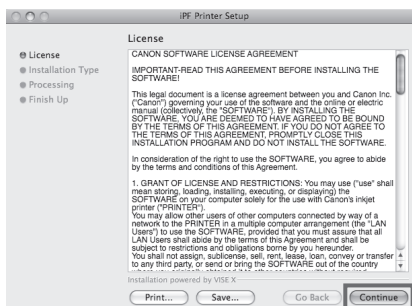
6

Click **Next**.



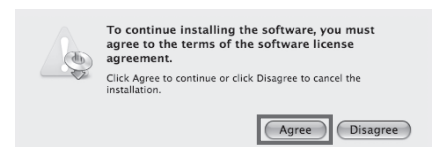
7

After reading the software license agreement, click **Continue**.



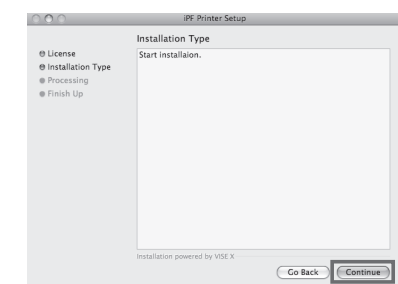
8

Click **Agree**.



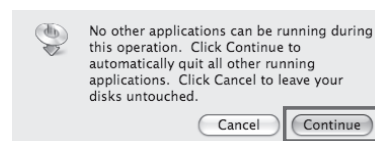
9

Click **Continue**.



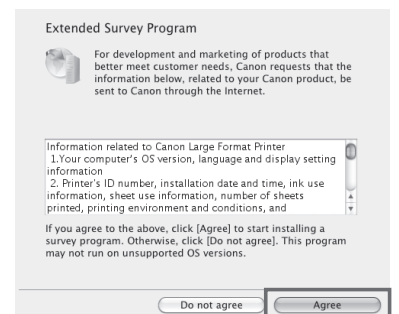
10

Exit other applications and click **Continue**.
Items selected in step 4 are installed.



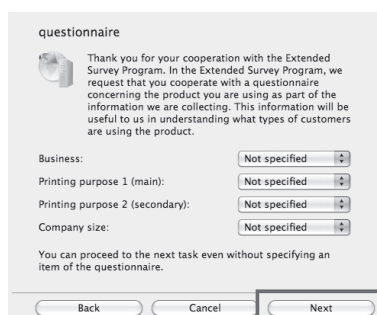
11

If you can agree Extended Survey Program, click **Agree**.



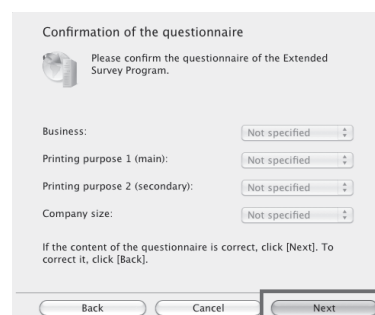
12

If you can respond to the questionnaire, click **Next**.



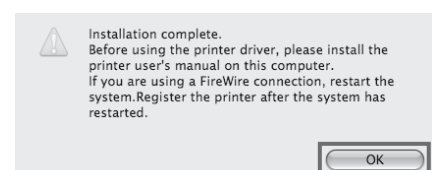
13

Confirm your questionnaire responses, and click **Next**.



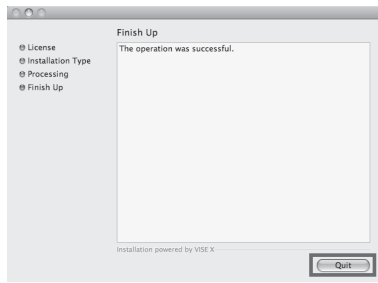
14

Click **OK**.



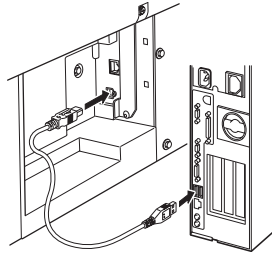
Connect the printer to a computer

- 15** Click **Quit**.
The software installation is now completed. Next, connect the printer to the computer.

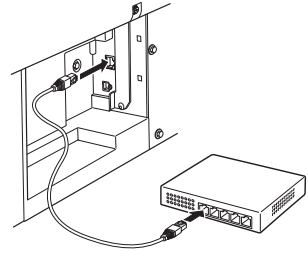


- 16** Make sure that the printer is on, and then connect the printer to the computer or the network with a cable.

- For USB connections



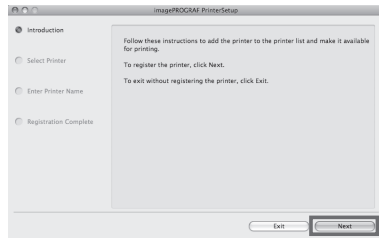
- For network connections



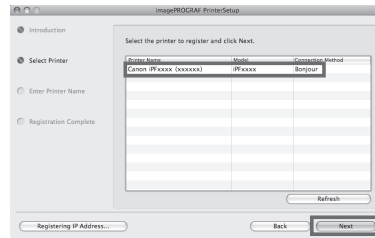
- Be careful not to insert the USB cable into the LAN port.

Select the printer to setup

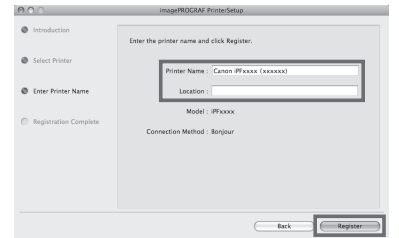
- 17** Click **Next**.



- 18** Select the printer to setup and click **Next**.

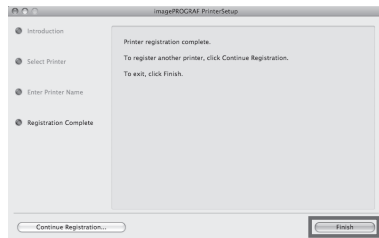


- 19** After entering your preferred name for the printer in **Printer Name** and the installation location in **Location**, click **Register**.



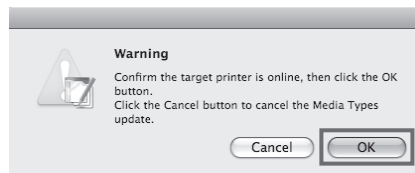
- To register the printer by entering its IP address, click **Registering IP Address**. Enter the IP address of the desired printer in **IP Address** and click **Next**.

- 20** Click **Finish**.



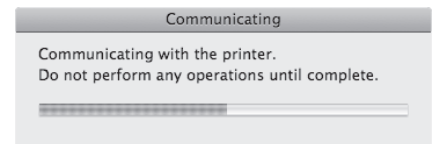
- To register another printer, click **Continue Registration**, and repeat steps 17 to 19.

- 21** Click **OK**.



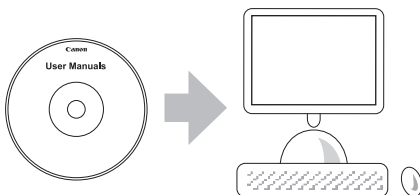
- If the same model of printer is already registered on the computer, a screen is displayed for printer selection. Select the desired printer and click **Next**.

- 22** The following screen is displayed and paper information is updated. When the paper information has been updated, the screen is no longer displayed.



Install the electronic manuals

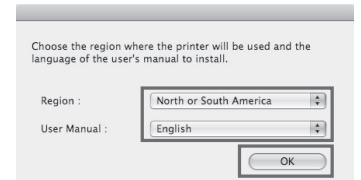
- 23** Next, install the electronic manuals. Insert the provided **User Manuals CD-ROM** in the CD-ROM drive.



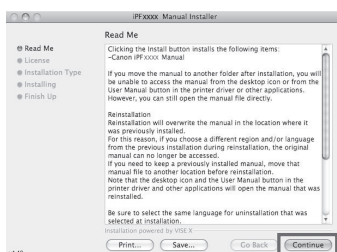
- 24** Double-click the **iPFxxxx Manual Installer** icon on the CD-ROM. (iPFxxxx represents the printer model.)



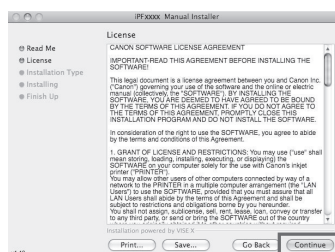
- 25** Select the region where the printer will be used and the language of the user manual to install, and then click **OK**.



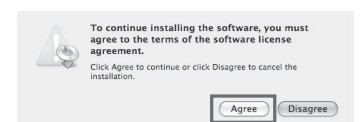
- 26** Check the message and click **Continue**.



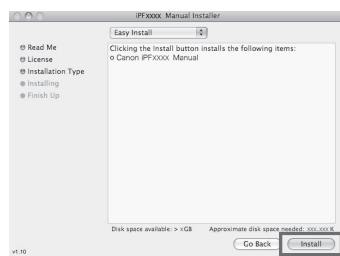
- 27** After reading the software license agreement, click **Continue**.



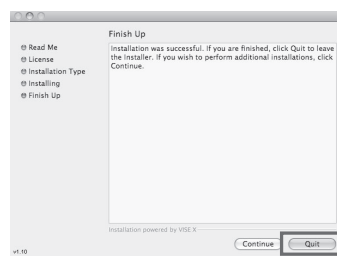
- 28** Click **Agree**.



29 Click **Install**.



30 After installation is completed, click **Quit**.

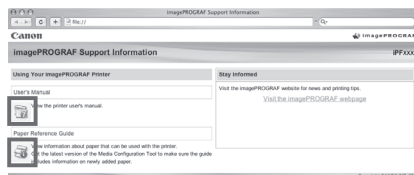


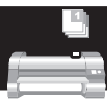
31 Click the **iPF Support** icon in the **Dock** (**Launchpad** in OS X v10.7 and later).



The electronic manuals installation is now completed.

32 When clicking the **User's Manual** button, the User's Guide will be opened and clicking the **Paper Reference Guide** button, the Paper Reference Guide will be opened.

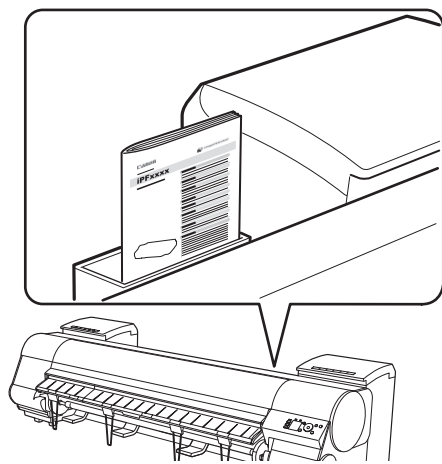




Store Accessories in the Pocket

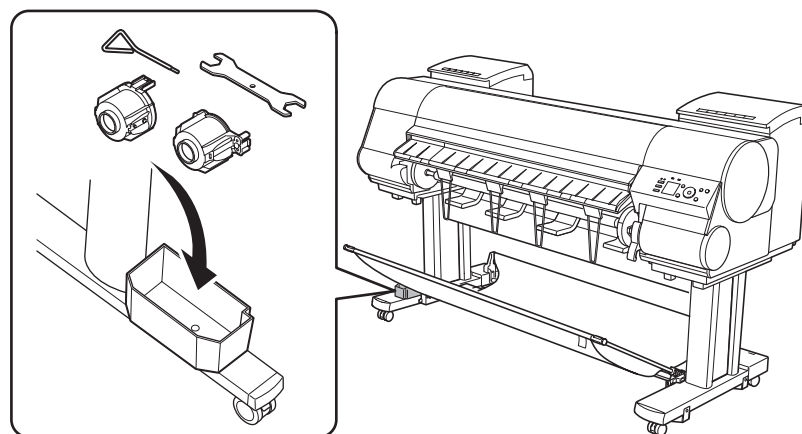
1

Use the manual pocket to store the Basic Guide (which includes descriptions of basic printer operations, routine maintenance, and troubleshooting tips), so you can refer to it as needed.



2

If you are using a stand, store accessories such as the **3-inch paper core attachment** in the accessory pocket.



MEMO

• When the setup is completed, refer to the various manuals to use the printer. Refer to "The Manuals Supplied with This Printer" on page 1.



Responding to Messages

Error messages may appear on the display screen of the control panel during printer installation. If so, it may not indicate a problem with the printer, and the issue may be easily resolved. Common messages and the causes are listed here with corrective actions. To respond to error messages other than these, refer to the Basic Guide. For details of operation procedure, refer to User's Guide installed in "Install the Software and the Electronic Manuals".

Message	Cause	Corrective Action
No ink tank loaded. Check ink tank.	There is no ink tank loaded.	Load or reload the ink tank. (See steps 4-12 on pages 3-4)
Cannot recognize print head x.	The printhead is not installed.	Install the printhead. (See steps 1-12 on pages 5)
Paper loaded crooked.	The loaded paper is crooked.	Reload the roll of paper. (See steps 10 and 11 on page 7) If the error occurs again after you reload the roll of paper, remove the roll holder from the printer and check to make sure that the paper is in close contact with the roll holder flange. (See step 5 on page 6)
No maintenance cartridge installed.	The maintenance cartridge is not connected.	Install the maintenance cartridge correctly.
Hardware error. xxxxxxxx-xxxx (x represents a letter or number)	The belt stopper or the tape inside the top cover has not been removed.	Turn off the power, open the top cover, and remove the tape and the belt stopper, then turn the power on.
	You may have encountered an error that cannot be resolved.	Turn off the printer and wait at least three seconds before restoring the power. If the message appears again, write down the error code and message, turn off the printer, and contact your Canon dealer for assistance.
ERROR Exxx-xxxx (x represents a letter or number)	You may have encountered an error that cannot be resolved.	Write down the error code and message, turn off the printer, and contact your Canon dealer for assistance.