



Canon

# Start Here

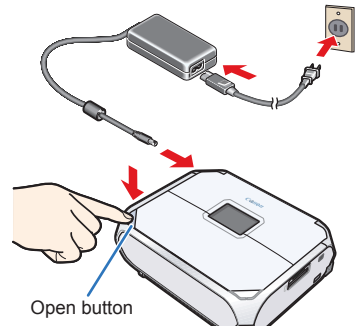
Easy Setup Instructions

PIXMA mini320 series  
Photo Printer

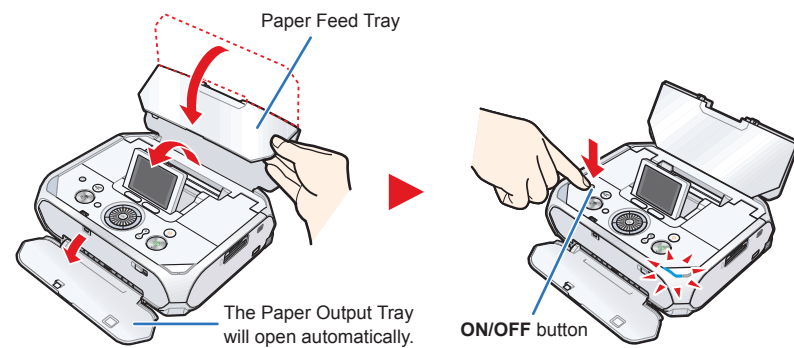
**Important**  
When cleaning the exterior of the printer, use a soft cloth to wipe it gently. For details, refer to "Cleaning Your Printer" in the *User's Guide* on-screen manual.

## 1 Prepare the Printer

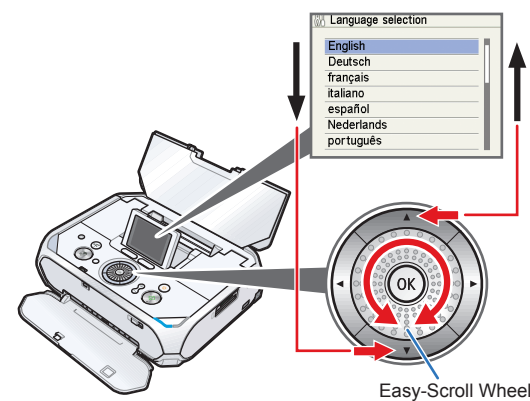
- 1 **Unpack the Printer.**  
Confirm the included items against the illustration printed on the lid of the packing box.  
A USB cable is necessary to connect the printer with your computer.
- 2 **Place the printer on a flat and horizontal surface, and do not place any objects in front of the printer.**  
Remove all the shipping tapes.
- 3 **Connect the power cord to the AC adapter. Plug the AC adapter into the printer, and connect the other end of the power cord to a power outlet. Then press the Open button to open the Paper Feed Tray and the Paper Output Tray.**



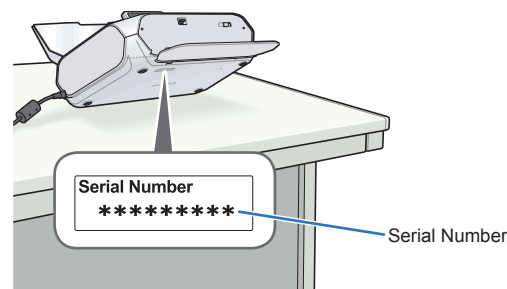
- 4 **Open the Paper Feed Tray and fold it in half. Then press the ON/OFF button.**  
The Language selection screen will be displayed.



- Important**  
If the Alarm lamp is lit orange and an error message is displayed, see "Error Message Is Displayed on the LCD" in the *Direct Photo Guide*.
- 5 **Use the ▲ or ▼ button or the Easy-Scroll Wheel on the Operation Panel to select the language for the LCD, then press the OK button.**



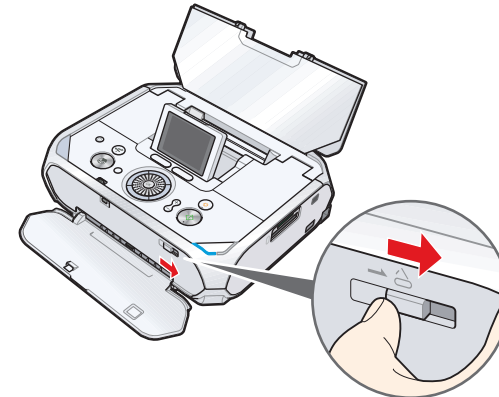
- Important**  
If an unintended language is displayed on the LCD, press the Back button to return to the Language selection screen.
- 6 **Write down the serial number located on the bottom face of the printer. You will need this to register your product.**



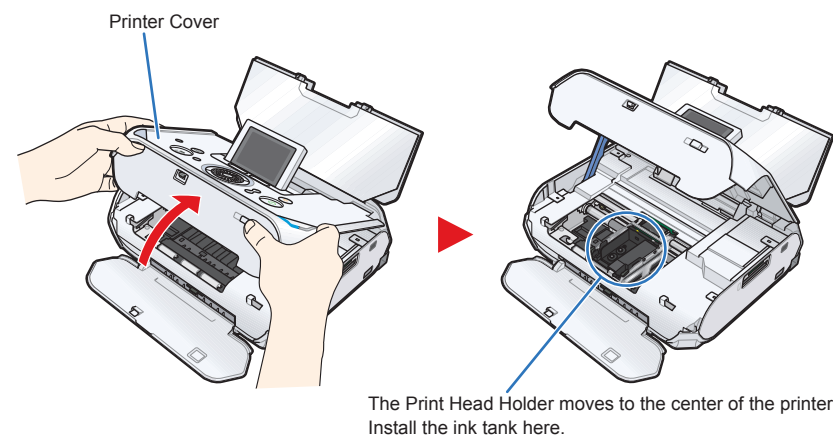
## 2 Install the ink tank

**Note**  
For the ink tank compatible with this printer, refer to the back cover of the *Direct Photo Guide*.

- 1 **Slide the Lock Switch to the right.**

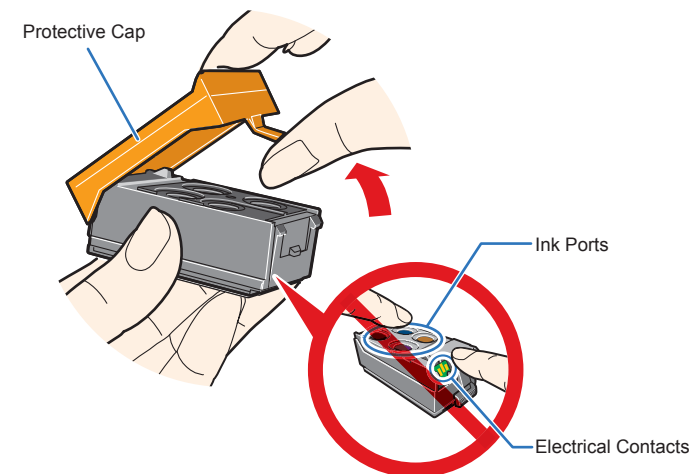


- 2 **Hold the Lock Switch in position, and lift the Printer Cover. The cover will be locked if it is fully lifted.**  
The procedure for installing the ink tank is displayed on the LCD.



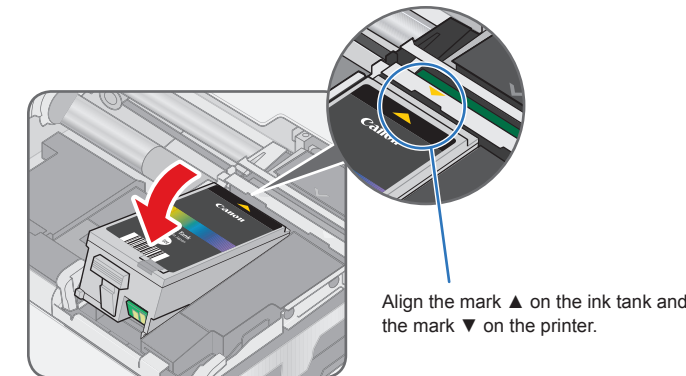
**Important**  
If the Printer Cover is left open for more than 10 minutes, the Print Head Holder moves to the right. Close and reopen the Printer Cover to return the holder to the center.

- 3 **Remove the orange protective cap and discard it.**

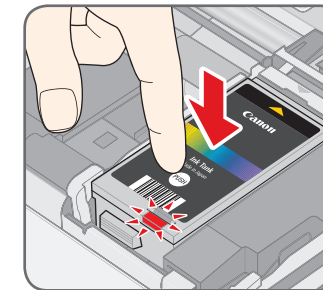


**Important**  
• Do not touch the electrical contacts or the ink ports.  
• Do not reattach the protective cap once you have removed it.

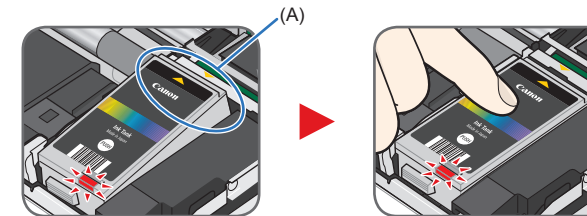
- 4 **Insert the ink tank at a slant.**



- 5 **Press the mark on the ink tank until it clicks into place and then its lamp lights red.**

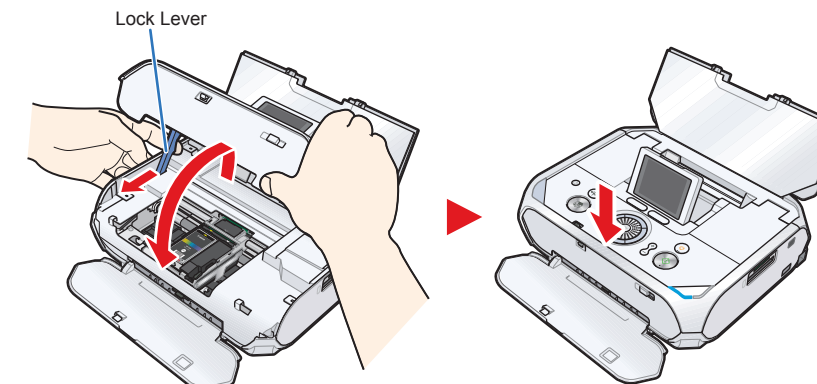


**Caution**  
If the front (innermost) part of the ink tank (A) is sticking up, push down on the Canon logo on the ink tank as illustrated below. Do not remove the ink tank forcibly.



**Important**  
If the lamp does not light red after it is inserted, repeat steps 4 and 5.

- 6 **Open the Printer Cover slightly, pull the Lock Lever to unlock, and then close the Printer Cover.**

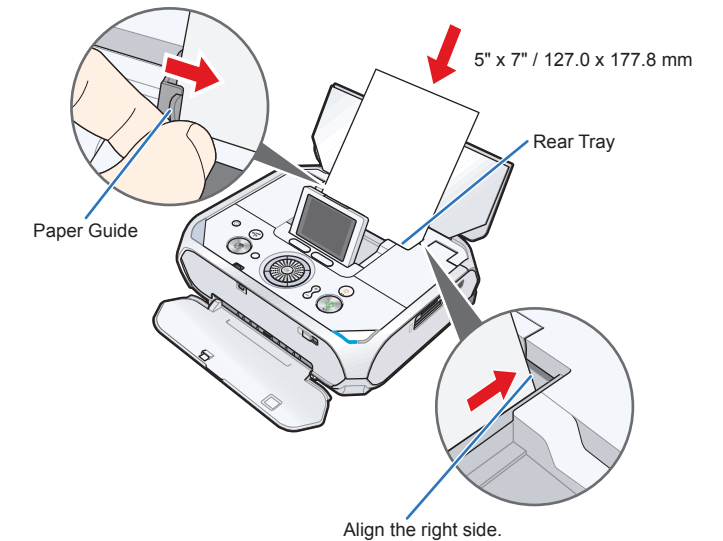


**Important**  
The printer starts operating. Wait about 1 minute until the printer stops making operating noises.

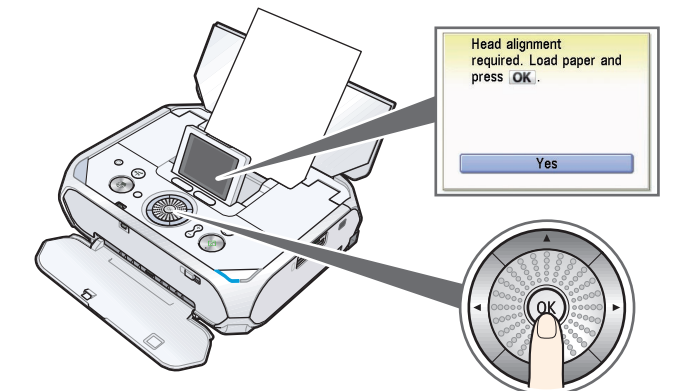
**Note**  
An error message will be displayed on the LCD if the Print Head Lock Lever is not set properly or the ink tank is not installed properly. Open the Printer Cover and make sure that the lock lever is set properly and ink tank is installed properly.

## 3 Align the Print Head

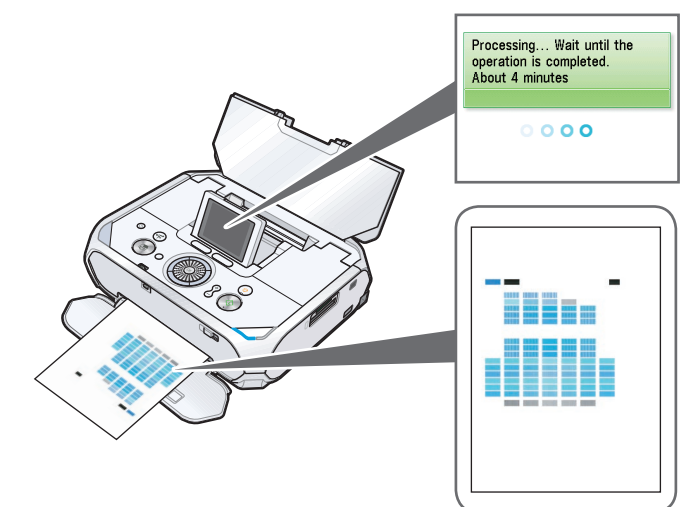
- 1 **Load a sheet of the SUPPLIED 5" x 7" / 127.0 x 177.8 mm paper into the Rear Tray with the printing side (whiter side) facing front. Align the paper with the right side of the Rear Tray, then slide the Paper Guide toward the left edge of the paper.**



- 2 **When the message requesting head alignment is displayed on the LCD, press the OK button.**



A pattern is printed and the Print Head is aligned automatically.



**Note**  
• The pattern is printed in black and blue only.  
• Automatic Print Head Alignment will take about 4 minutes to complete. Do not start another operation until the printer has stopped making operating noises.  
• If Automatic Print Head Alignment cannot be executed correctly and a message is displayed on the LCD, please refer to "Error Message Is Displayed on the LCD" in the *Direct Photo Guide*.

**Hardware setup and Print Head alignment is complete.**

If you are connecting the printer to a computer, please see the back side of this sheet for Software Installation Instructions.





Windows® Software Installation

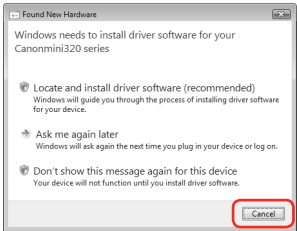
Windows

- Note**
- The screens below refer to Windows Vista™ operating system Ultimate Edition (hereafter referred to as "Windows Vista") installation. Screens may vary depending on the operating system you are using.
  - Log into a user account with the administrator privilege.
  - Before installing the software, disable all anti-virus programs and automatically loading programs.
  - A message asking for your confirmation to restart your computer may appear during the installation process. If this message is displayed, follow the on-screen instructions and click **OK**. The installation resumes from where it left off when your computer has been restarted.

- 1 Be sure to **TURN THE PRINTER OFF** before continuing.
- (1) Press the **ON/OFF** button.
- (2) Make sure that the **Power** lamp stops flashing.
- 2 Turn the computer on and start Windows.

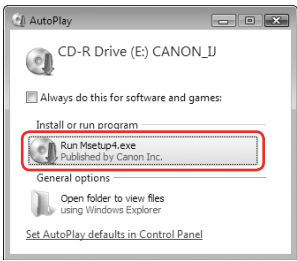
**Important**

If the **Found New Hardware** or **Found New Hardware Wizard** screen appears automatically, remove the USB cable connected to your computer. Click **Cancel** to quit the screen. In Windows Vista, the screen may close automatically when the USB cable is unplugged. Then turn off the printer and proceed from step 3 to install the software.

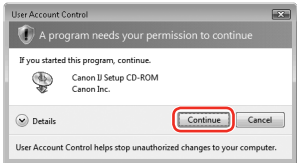


- 3 Insert the **Setup CD-ROM**. The setup program should run automatically.
- In Windows Vista, go to Step 4. In Windows XP and Windows 2000, go to Step 6.

- 4 If the **AutoPlay** screen appears, click **Run Msetup4.exe**.



- 5 If the **User Account Control** screen appears, click **Continue**. If the same screen reappears in subsequent steps, click **Continue**.



- 6 When the main menu appears, click **Easy Install**.

The printer driver, On-screen Manuals, and application software are installed automatically.

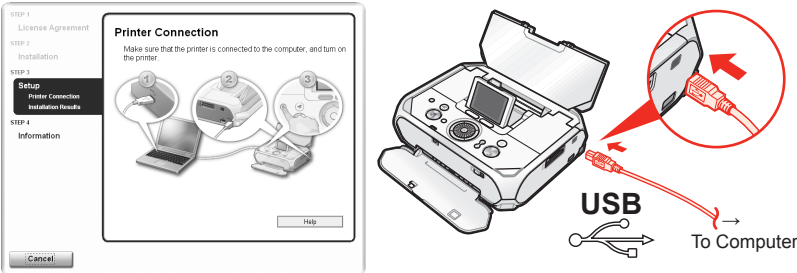


- Note**
- If you want to select particular items to install, click **Custom Install** and follow the on-screen instructions to proceed with the installation.
  - To install Adobe RGB® (1998), click **Custom Install** and follow the instruction on the screen.

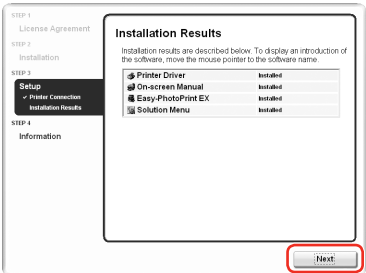
- 7 When the list of software to install appears, confirm the contents, click **Install**.
- Note**
- Move the cursor over items to display explanations of each application.
- 8 Read the License Agreement carefully and click **Yes**. The software installation screen may appear during the installation process. Follow the on-screen instructions to install the software.
- 9 When the **Printer Connection** screen appears, connect one end of the USB cable to the computer and the other to the printer, then **TURN THE PRINTER ON**. The printer driver will begin identifying the printer port being used.

**Important**

If you cannot go to the next procedure after three minutes, refer to "Troubleshooting" instructions in the *Direct Photo Guide*.



- 10 When the **Installation Results** screen appears, click **Next**.



- 11 When the **User Registration** screen appears, click **Next**.
- Note**
- To register later, click **Cancel** and go to Step 12. After software installation is complete, double-click on the desktop.
- Follow on-screen instructions to register your product. You will need your product serial number, which is located on the bottom face of the printer. See Step 1- 6 on the front page.

- 12 When the **PIXMA Extended Survey Program** screen appears, confirm the message. We would appreciate it if you would take part in this program regarding the use of Canon printers. If you can agree, click **Agree**.
- 13 When the **Installation completed successfully** screen appears, click **Exit**.
- If **Restart** is displayed, make sure that the **Restart the system now (recommended)** check box is selected, then click **Restart**.

Software installation is now complete.

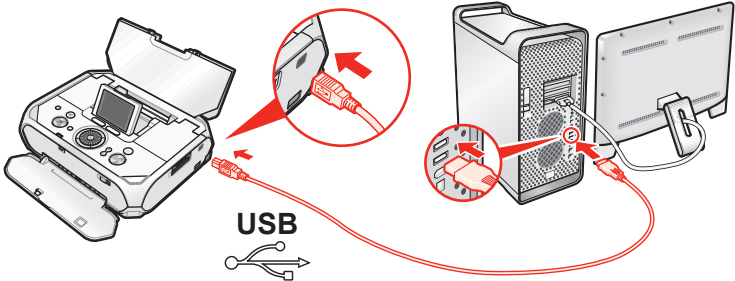
Macintosh® Software Installation

Macintosh

- Note**
- Since Mac® OS 9, Mac OS X Classic environments, or Mac OS X v.10.2.7 or earlier are not supported, do not connect the printer to these.
  - The screens below refer to Mac OS X v.10.4.x installation. Screens may vary depending on the operating system you are using.
  - Log on as an Administrator.
  - Before installing the software, disable all anti-virus programs and automatically loading programs.

- 1 Connect one end of the USB cable to the computer and the other to the printer.

- Note**
- Make sure the printer is turned on.



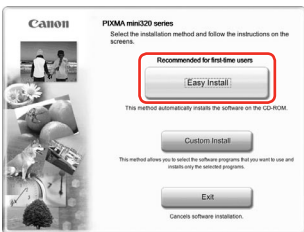
- 2 Turn on your Mac and insert the **Setup CD-ROM**.

- Note**
- If the **CD-ROM** folder does not open automatically, double-click the **CD-ROM** icon on the desktop.

- 3 Double-click the **Setup** icon.

- 4 When the **Authenticate** screen appears, enter your administrator name and password. Click **OK**. If you do not know your administrator name or password, click , then follow the on-screen instructions.

- 5 When the main menu appears, click **Easy Install**.
- The printer driver and On-screen Manuals are installed automatically.



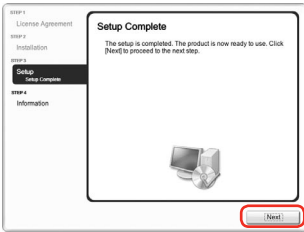
- Note**
- If you want to select particular items to install, click **Custom Install** and follow the on-screen instructions to proceed with the installation.

- 6 When the list of software to install appears, confirm the contents, then click **Install**.

- Note**
- Move the cursor over items to display explanations of each application.

- 7 Read the License Agreement carefully and click **Yes**. The software installation screen may appear during the installation process. Follow the on-screen instructions to install the software.

- 8 When the **Setup Complete** screen appears, click **Next**.



- 9 When the **User Registration** screen appears, click **Next**.

- Note**
- To register later, click **Cancel** and go to Step 10. After software installation is complete, double-click on the desktop.

Follow on-screen instructions to register your product. You will need your product serial number, which is located on the bottom face of the printer. See Step 1- 6 on the front page.

- 10 When the **Installation completed successfully** screen appears, click **Restart**.



The system is restarted automatically.

Software installation is now complete.