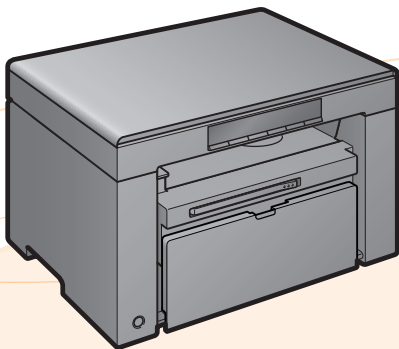




# MF Driver Installation Guide



<b>User Software CD-ROM</b> .....	<b>1</b>
About the Drivers and Software .....	1
Supported Operating Systems .....	1
<b>Installing the MF Drivers and MF Toolbox</b> .....	<b>2</b>
Installing with [Easy Installation] .....	2
Installing with [Custom Installation] .....	7
USB cable connection .....	11
Checking the installation results .....	12
<b>How to Use the Online Help</b> .....	<b>13</b>
<b>Appendix</b> .....	<b>14</b>
Uninstalling the Software .....	14
To uninstall the printer/scanner driver .....	14
To uninstall the MF Toolbox .....	15

# User Software CD-ROM

---

## About the Drivers and Software

MF Drivers	
Printer driver	You can print from an application using the machine by installing the printer driver on your computer. You can process print data at high speed by compressing the print data using the computer's processing capability.
Scanner driver	You can use the machine as a scanner if you install the scanner driver on your computer.
MF Toolbox	MF Toolbox is a program which allows you to easily open an image scanned by the scanner in an application, attaching the scanned image to an e-mail, and storing the scanned image in a hard disk.
Additional Software Programs	
Presto! PageManager	This is the software for managing the scanned images.

## Supported Operating Systems

○ : available      — : not available

	Windows 2000/XP	Windows Vista/7
Printer driver	○	○
Scanner driver	○	○
MF Toolbox	○	○
Presto! PageManager	○	○

# Installing the MF Drivers and MF Toolbox

---

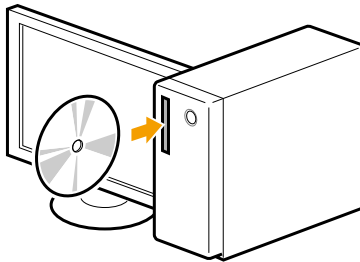
Install the software to use the machine.

## IMPORTANT

- **If you are using a 64-bit operating system**  
The MF driver and MF Toolbox for 64-bit operating systems may not be supplied depending on your country or region.
- **User rights for logging on to Windows**  
Log on as a user with administrative rights.
- **When installing via USB connection**  
Connect the USB cable after the software installation.  
Make sure that the power of the machine is turned ON when connecting the USB cable.
- **Installing the e-Manual**  
The e-Manual is not installed by selecting [Easy Installation].  
To install the e-Manual, select [Custom Installation] on p. 7.
  - \* If the User Manual CD-ROM is supplied with the machine, install the e-Manual from the User Manual CD-ROM.

## Installing with [Easy Installation]

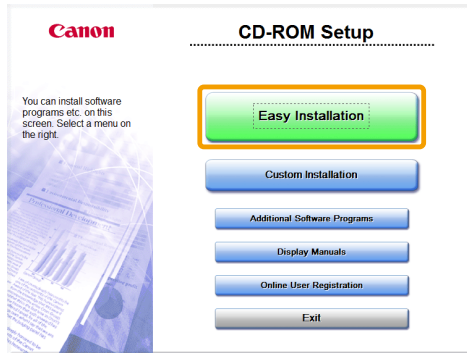
### **1** Insert the User Software CD-ROM.



## 2 Click [Easy Installation].

To install the following software and manuals that cannot be installed with [Easy Installation], select [Custom Installation] (See p. 7).

- Presto! PageManager
  - e-Manual
- \* If the User Manual CD-ROM is supplied with the machine, install the e-Manual from the User Manual CD-ROM.



\* The options to be displayed differ depending on your country or region.

### If the above dialog box does not appear

#### **Windows 2000/XP**

1. From the [Start] menu, select [Run].
2. Enter "D:\MInst.exe", and then click [OK].

#### **Windows Vista/7**

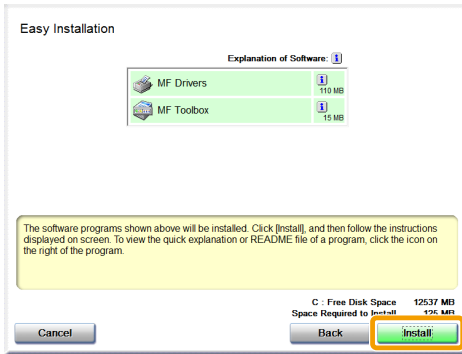
1. Enter "D:\MInst.exe" in [Start Search] or [Search programs and files] under the [Start] menu.
2. Press the [ENTER] key on the keyboard.

\* The CD-ROM drive name is indicated as "D:" in this manual. The CD-ROM drive name may differ depending on the computer you are using.

### If a language selection screen is displayed before the CD-ROM setup screen

Select a language and then click [Next].

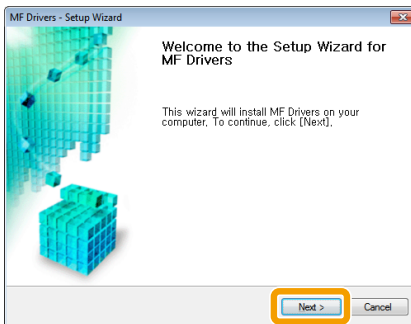
### 3 Click [Install].



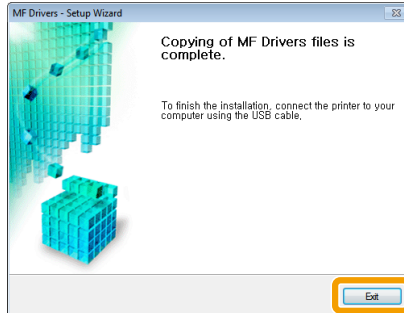
### 4 Read the contents of the License Agreement, and then click [Yes].



### 5 Click [Next].



## 6 Click [Exit].

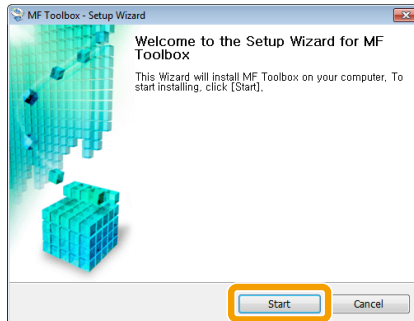


---

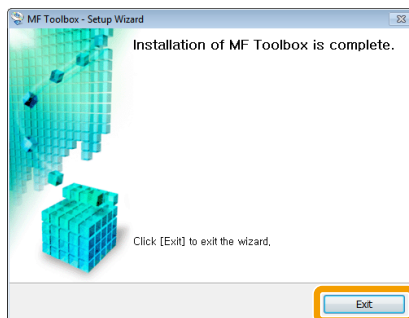
**Next, installation of MF Toolbox starts.**

---

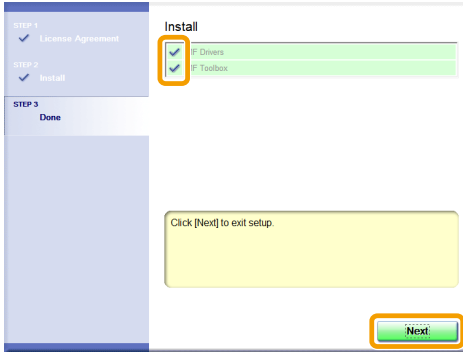
## 7 Click [Start].



## 8 Click [Exit].



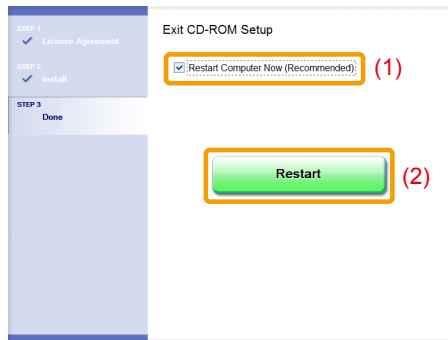
## 9 Check that is selected in [Install], and then click [Next].



## 10 Restart your computer.

- (1) Select the [Restart Computer Now (Recommended)] check box.
- (2) Click [Restart].

※ The CD-ROM may be removed once this screen appears.



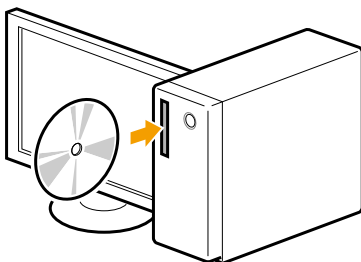
---

Connect the USB cable after restarting your computer.  
See "USB cable connection," on p. 11.

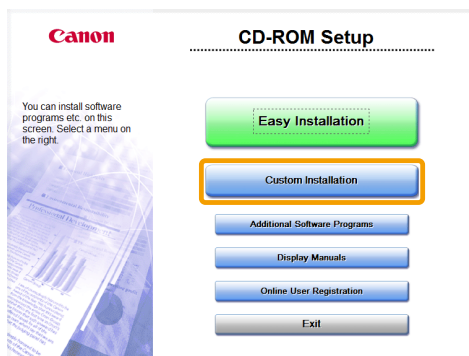
---

# Installing with [Custom Installation]

## 1 Insert the User Software CD-ROM.



## 2 Click [Custom Installation].



※The options to be displayed differ depending on your country or region.

### ? If the above dialog box does not appear

#### Windows 2000/XP

1. From the [Start] menu, select [Run].
2. Enter "D:\MInst.exe", and then click [OK].

#### Windows Vista/7

1. Enter "D:\MInst.exe" in [Start Search] or [Search programs and files] under the [Start] menu.
2. Press the [ENTER] key on the keyboard.

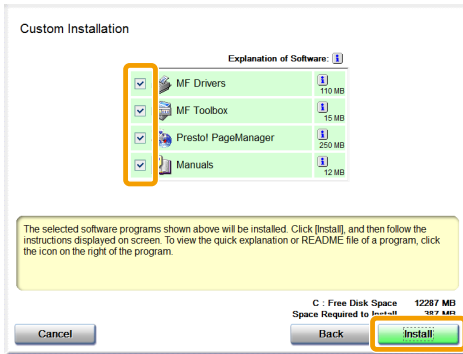
\* The CD-ROM drive name is indicated as "D:" in this manual. The CD-ROM drive name may differ depending on the computer you are using.

### ? If a language selection screen is displayed before the CD-ROM setup screen

Select a language and then click [Next].



### 3 Select the check box for the software to be installed, and then click [Install].



✘ The options to be displayed differ depending on your country or region.

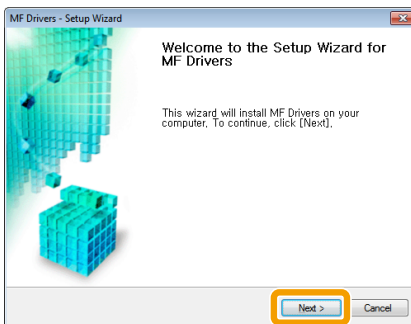
✘ To install the e-Manual, select the [Manuals] check box.

\* If [Manuals] does not appear, install the e-Manual from the User Manual CD-ROM supplied with the machine.

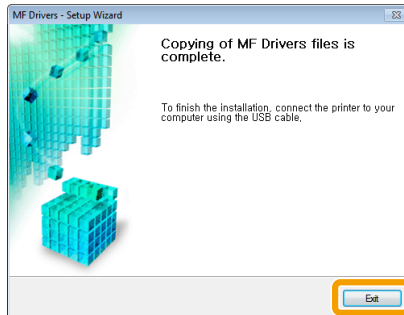
### 4 Read the contents of the License Agreement, and then click [Yes].



### 5 Click [Next].



## 6 Click [Exit].



---

### Next, installation of MF Toolbox starts.

※ If you cleared the [MF Toolbox] check box in Step 3, MF Toolbox is not installed. Proceed to Step 10.

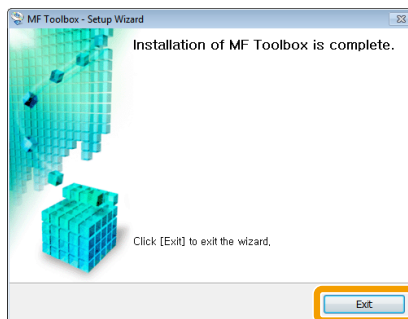
---

## 7 Click [Start].

The screens for specifying a location in which the MF Toolbox is installed and position to which the start menu is added appear. Specify the settings in the respective screens, and then click [Next]. Click [Start] in the displayed screen.



## 8 Click [Exit].

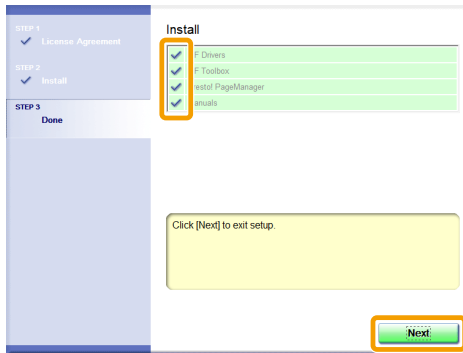


---

The software for which the check box was selected in Step 3 is installed.  
Follow the on-screen instructions.

---

## 9 Check that is selected in [Install], and then click [Next].



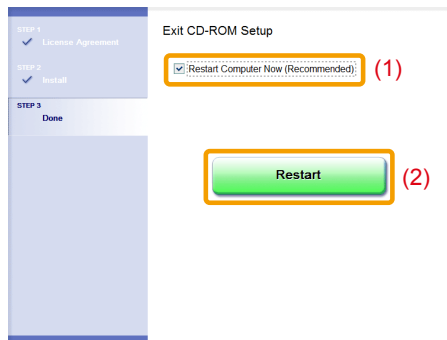
※ The options to be displayed differ depending on your country or region.

## 17 Restart your computer.

(1) Select the [Restart Computer Now (Recommended)] check box.

(2) Click [Restart].

※ The CD-ROM may be removed once this screen appears.



---

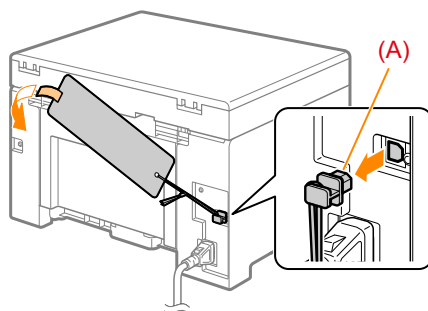
Connect the USB cable after restarting your computer.  
See "USB cable connection," on p. 11.

---

## USB cable connection

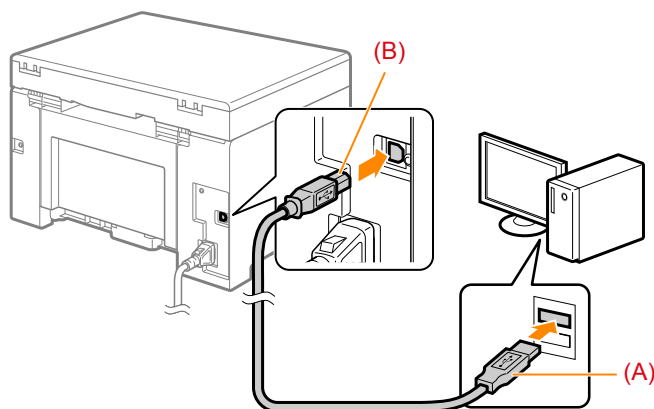
### 1 Remove the cap (A) on the USB port of the machine.

Remove the cap by pulling out the string.



### 2 Connect the USB cable.

- Flat end (A): Connect to the USB port on the computer.
- Square end (B): Connect to the USB port on the machine.



#### When a dialog box is displayed

Follow the on-screen instructions and complete the installation.

---




After the installation, check the installation results.  
See "Checking the installation results," on p. 12.

---

## Checking the installation results

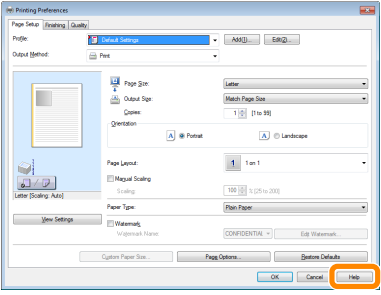
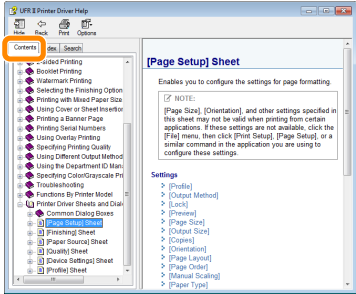
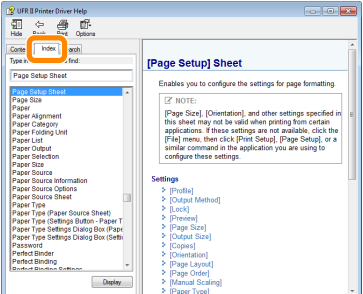
Check that the MF drivers and MF Toolbox are installed correctly.

Check that the icons for the installed software is added as follows.

Software	Location	Icon
Printer driver	[Printers and Faxes], [Printers], or [Devices and Printers] folder.	 Canon MF3010
Scanner driver	[Scanners and Cameras] or [Scanners and Cameras Properties] folder	 WIA Canon MF3010 Series
MF Toolbox	Desktop	 Canon MF Toolbox 4.9

# How to Use the Online Help

In the Online Help, all the functions of the driver software and information about options are included. If you want to know descriptions of the functions and settings immediately when using the driver software, make use of the Online Help.

<p>How to display the Help screen</p>	<ol style="list-style-type: none"> <li>(1) Select [File] -&gt; [Print] from the menu bar in the application.</li> <li>(2) Select the printer in [Select Printer] or [Name] in the [Print] dialog box.</li> <li>(3) Click [Preferences] or [Properties].</li> <li>(4) Click [Help].</li> </ol>	
<p>Searching from Contents</p>	<p>Click [Contents] in the Help screen, and then double-click the desired title to display the information.</p>	
<p>Searching with Index</p>	<p>Click [Index] in the Help screen, and then double-click the desired keyword from the list to display the information. To search for a desired keyword, enter the keyword directly in the above text box. The closest keyword is listed below.</p>	

# Appendix

---

## Uninstalling the Software

If you do not need the printer driver, scanner driver, or MF Toolbox, you can uninstall them with the following procedure.

### IMPORTANT

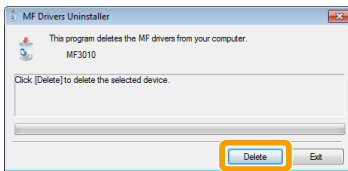
Confirm the following before uninstalling the software:

- You must have administrative privileges on the computer
- You should have the installation software (in case you want to re-install the drivers)
- You have closed all applications on your computer

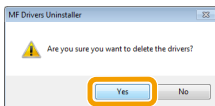
### *To uninstall the printer/scanner driver*

**1** From the [Start] menu, click [(All) Programs] -> [Canon] -> [MF3010] -> [Uninstall Drivers].

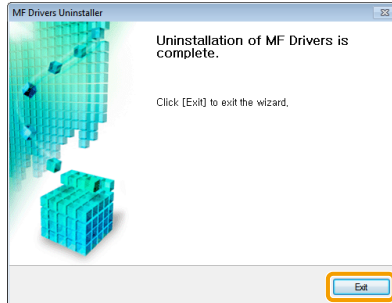
**2** Click [Delete].



**3** Click [Yes] to confirm the uninstallation.



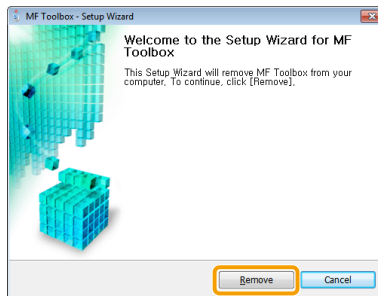
## 4 Click [Exit] (or [Restart]).



### *To uninstall the MF Toolbox*

**1** From the [Start] menu, click [(All) Programs] -> [Canon] -> [MF Toolbox 4.9] -> [Toolbox Uninstall].

**2** Click [Remove].



**3** Click [Exit].

