

# Canon

## PIXMA TS8300 series

Getting Started

Démarrage

Inbetriebnahme

Aan de Slag-gids

Guida Rapida

Para Começar

Guía de inicio

ΞΕΚΙΝΩΝΤΑΣ

Uppstartsguide

Komme i gang

Før du begynder

Aloitusopas



<https://ij.start.canon>



Read **Safety and Important Information** (addendum) first.

Commencez par lire **Sécurité et informations importantes** (addendum).

Lesen Sie **Sicherheitsinformationen und wichtige Hinweise** (Anhang) zuerst.

Lees eerst **Veiligheidsinformatie en belangrijke informatie** (addendum).

Leggere innanzitutto **Informazioni importanti e sulla sicurezza** (addendum).

Leia **Informações Importantes e Sobre Segurança** (adendo) primeiro.

Lea primero **Información de seguridad e información importante** (apéndice).

Διαβάστε πρώτα τις **Πληροφορίες για την ασφάλεια και σημαντικές πληροφορίες** (συμπλήρωμα).

Läs **Information om säkerhet och annan viktig information** (bilaga) först.

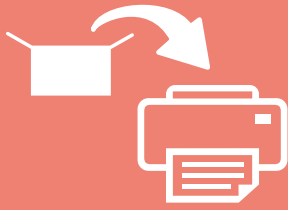
Les **Sikkerhetsinformasjon og viktig informasjon** (tillegg) først.

Læs **Sikkerhedsoplysninger og vigtige oplysninger** (tillæg) først.

Lue **Turvallisuus ja tärkeitä tietoja** (lisähuomautus) ensin.



Q T 6 3 2 0 5 V 0 1

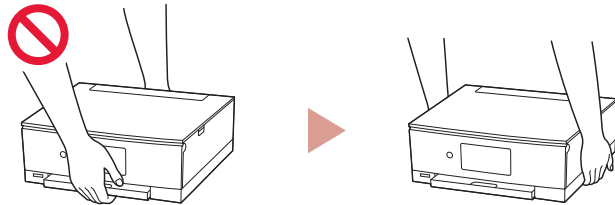



Installing the Printer.....page 1  
 Installation de l'imprimante.....page 1  
 Installation des Druckers.....Seite 1  
 De printer installeren.....pagina 1  
 Installazione della stampante.....pagina 1  
 Instalando a impressora.....página 1  
 Instalación de la impresora.....página 1  
 Εγκατάσταση του εκτυπωτή.....σελίδα 1  
 Installera skrivaren.....sida 1  
 Installere skrивeren.....side 1  
 Installation af printeren.....side 1  
 Tulostimen asennus.....sivu 1

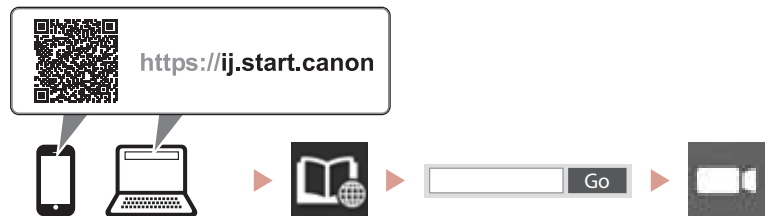


Connecting to a Computer, Smartphone or Tablet.....page 4  
 Connexion à un ordinateur, un smartphone ou une tablette.....page 4  
 Herstellen einer Verbindung mit einem Computer, Smartphone oder Tablet...Seite 4  
 Verbinden met een computer, smartphone of tablet.....pagina 4  
 Connessione a un computer, uno smartphone o un tablet.....pagina 4  
 Conectando a um computador, smartphone ou tablet.....página 4  
 Conexión con un ordenador, teléfono inteligente o tableta.....página 4  
 Σύνδεση σε υπολογιστή, smartphone ή tablet.....σελίδα 4  
 Ansluta till en dator, smarttelefon eller surfplatta.....sida 4  
 Koble til en datamaskin, en smarttelefon eller et nettbrett.....side 4  
 Tillslutning til en computer, smartphone eller tablet.....side 4  
 Yhdistäminen tietokoneeseen, älypuhelimeen tai tablet-tietokoneeseen....sivu 4

Holding the Printer  
 Manipulation de l'imprimante  
 Halten des Druckers  
 De printer vasthouden  
 Come tenere la stampante  
 Segurando a impressora  
 Cómo sujetar la impresora  
 Πώς να κρατήσετε τον εκτυπωτή  
 Bära skrivaren  
 Holde skrивeren  
 Holde printeren  
 Tulostimen pitäminen



 Instructional Videos  
 Instructions vidéo  
 Anleitungsvideos  
 Instructievideo's  
 Video informativi  
 Vídeos instrucionais  
 Vídeos instructivos  
 Εκπαιδευτικό βίντεο  
 Instruktionsfilmer  
 Instruksjonsvideoer  
 Instruktionsvideoer  
 Ohjevideot



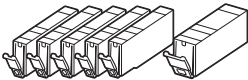
# Setting Up the Printer

**Online Setup**  
<https://ij.start.canon>



## 1. Box Contents

- Ink tanks for setup



- Power cord
- Setup CD-ROM for Windows
- Safety and Important Information
- Getting Started (this manual)

## 2. Removing Packing Materials



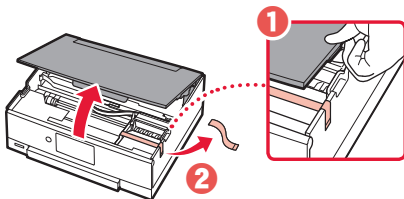
### Important

When printing starts, the operation panel opens and the paper output tray extends out automatically. Do not place anything in front of the printer.

### 1 Remove and dispose of any packing materials and orange tape.

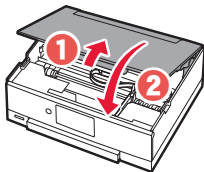
- Using the printer with orange tape or packing material still attached, may cause the printer to malfunction.

### 2 Open the scanning unit / cover and remove the orange tape.



### 3 Close the scanning unit / cover.

- Open the scanning unit / cover fully and then close it.

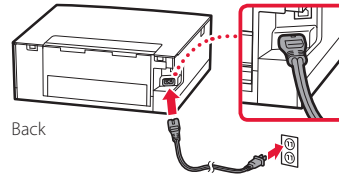


▲ Caution  
Watch your fingers.

## 3. Turning on the Printer



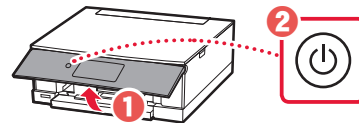
### 1 Connect the power cord.



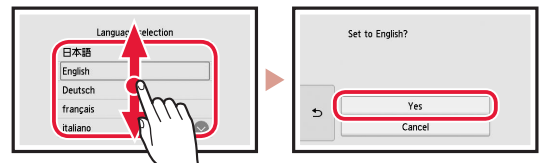
### Important

At this time, do not connect any other cables.

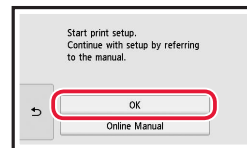
### 2 Open the operation panel and press the **ON** button.



### 3 Scroll and tap to select your language, and then tap **Yes**.



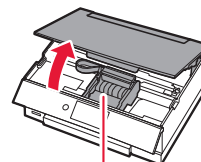
### 4 Tap **OK**.



## 4. Installing the Ink Tanks



### 1 Open the scanning unit / cover.

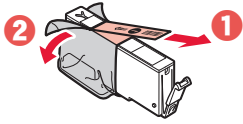


### Caution

Do not touch the print head holder until it stops moving.

## Setting Up the Printer

- 2 Remove the tape and film on the ink tank.



- Check that no tape is left over.

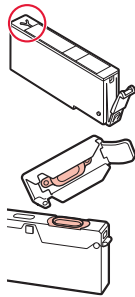
- 3 Slowly remove the orange cap.



### Important

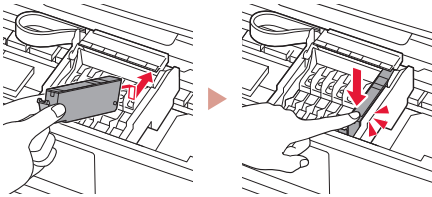
- Do not squeeze the ink tank with the Y-shaped air hole blocked.

- Do not touch the areas shown in red.

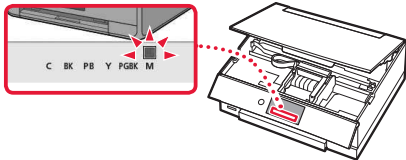


- 4 Install the ink tank.

- Insert the ink tank into the print head and press down until it clicks.



- 5 Check that the color of the ink tank you installed appears on the screen.

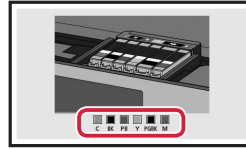


### Important

If the color is not displayed on the screen even though you have installed the ink tank, the color of the ink tank may be wrong or you may have installed an ink tank, such as one with a different model number, that is not supported by this printer. Either install an ink tank for the correct color or use the provided ink tank for setup.

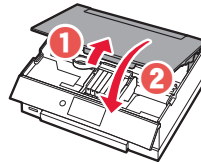
- 6 Repeat steps 2 through 5 to install all the ink tanks.

- Check that all the colors appear.



- 7 Close the scanning unit / cover.

- The printer will start initializing.



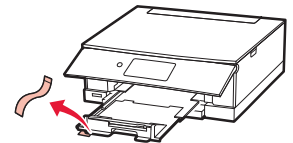
- ⚠ Caution  
Watch your fingers.

## 5. Loading Paper

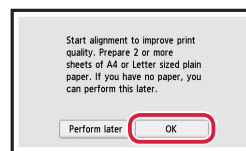


### Check!

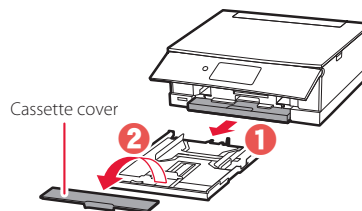
Remove any orange tape.



- 1 Tap **OK**.

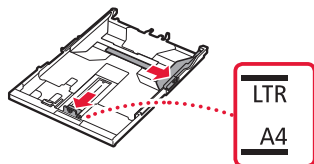


- 2 Remove the cassette from the printer and remove the cassette cover.



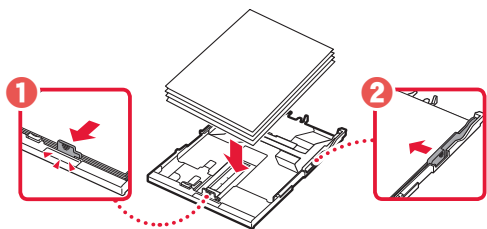
### 3 Slide apart the paper guides.

- Slide the right paper guide to the right edge. Align the front paper guide with the Letter or A4 mark.

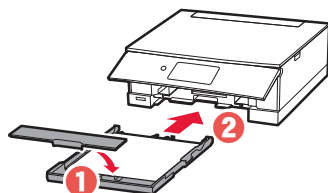


### 4 Load paper.

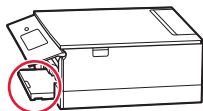
- Load 2 or more sheets of Letter or A4 sized plain paper with the print side facing down.
- Place the paper against the front paper guide, and align the right paper guide to the width of the paper.



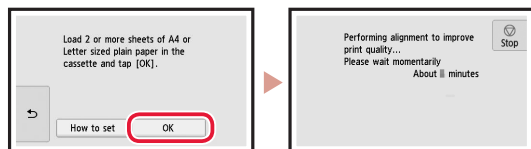
### 5 Attach the cassette cover and replace the cassette.



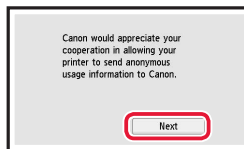
- Look at it from the side to confirm it looks like the diagram.



### 6 Tap OK.

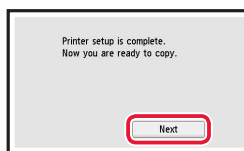


### 7 Tap Next.

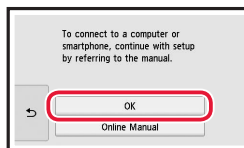


- Follow the on-screen instructions to continue setup. This includes making selections related to sending information. Refer to "Sending Information To Canon" in **Safety and Important Information**.

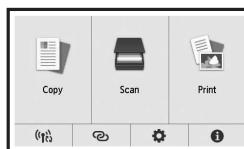
### 8 Tap Next.



### 9 Tap OK.



### 10 Check that the following screen appears.



If you will use the printer without connecting any other devices, setup is now complete.

## Setting Up the Printer

### What device are you connecting?



Computer



Computer and  
smartphone



Smartphone

## 6-a

### Connecting to a Computer

If you are using multiple computers, perform these steps on each computer.



- 1 Access the Canon website from a computer.

<https://ij.start.canon>



- 2 Select  **Set Up**.

- 3 Enter your printer's model name and click **Go**.

- 4 Click **Start**.

- 5 Click **If you have already prepared your printer, go to Connect**.

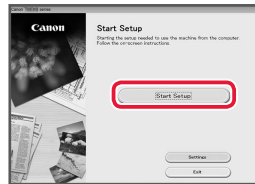
#### ▶▶▶ Note

The following steps are for Windows (except Windows 10 in S mode) and macOS users. For other operating systems, continue setup by following the on-screen instructions instead.

- 6 Click **Download**.

- 7 Run the downloaded file.

- 8 Click **Start Setup**.



- 9 Follow the on-screen instructions.

- These operations may take some time.
- To connect to a smartphone as well, see "6-b. Connecting to a Smartphone" on page 5.

#### Using the Setup CD-ROM for Windows

Double click **EasySetup.exe** in the CD-ROM, and then continue from step 3. If you do not have an internet connection, open the **win** folder in the CD-ROM and double click **SETUP.exe**. This will install the printer driver.

## 6-b

### Connecting to a Smartphone

If you are using multiple smartphones, perform these steps on each smartphone.



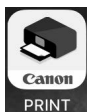
#### Prepare the following before starting.

- 1 Enable the Wi-Fi setting on your smartphone.
  - 2 Connect your smartphone to the wireless router (if you have a wireless router).
- Refer to your smartphone and wireless router manuals for more details.

- 1 Install the "Canon PRINT Inkjet/SELPHY" app on your smartphone.
  - Scan the QR code shown on the right to access the Canon website, and then download the app.



- 2 Open the installed app.



- 3 Follow the on-screen instructions in the app to add your printer.

---

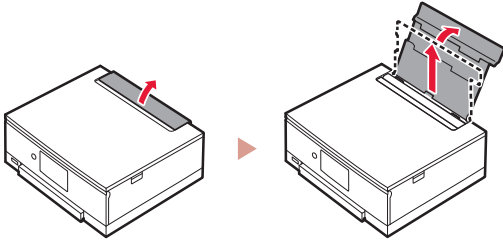
Once you have added your printer, you can print from your smartphone.  
To print photos, see "Loading Photo Paper" on page 6.

---

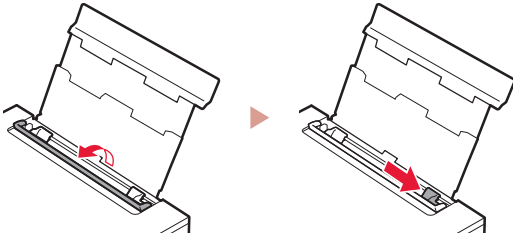
# Loading Photo Paper

Photo paper can only be loaded in the rear tray.

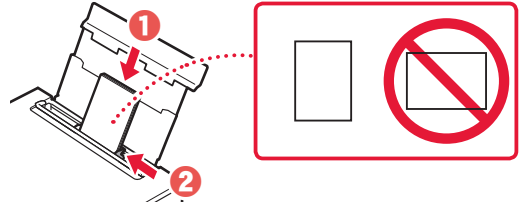
- 1 Open the rear tray cover and extend the paper support.



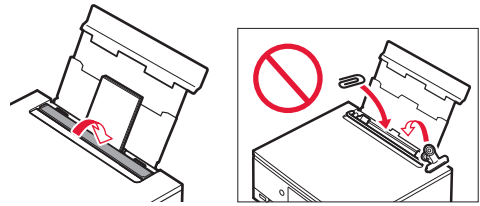
- 2 Open the feed slot cover and slide the right-hand side paper guide to the far right.



- 3 Load several sheets of photo paper with the print side facing up and slide the side paper guide against the edge of the paper stack.

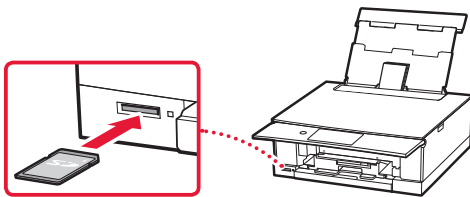


- 4 Close the feed slot cover.
  - Follow the on-screen instructions to set information for the loaded paper.



# Printing Photos Saved on a Memory Card

- 1 Turn on the printer.
- 2 Load several sheets of photo paper.
- 3 Insert the memory card into the card slot.
- 4 Flick right and left through the photos and select one.
- 5 Tap the **Color** button to start printing.





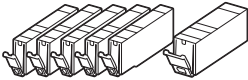
# Configuration de l'imprimante

Configuration en ligne  
<https://ij.start.canon>



## 1. Contenu de la boîte

- Cartouches d'encre pour la configuration
- Cordon d'alimentation
- CD-ROM d'installation pour Windows
- Sécurité et informations importantes
- Démarrage (ce manuel)



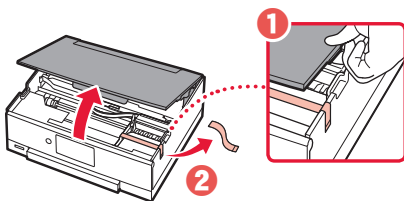
## 2. Retrait du matériel d'emballage



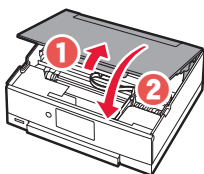
### Important

Lorsque l'impression démarre, le panneau de contrôle s'ouvre et le bac de sortie papier se déploie automatiquement. Ne placez aucun objet devant l'imprimante.

- 1 Enlevez et jetez tout matériel d'emballage et bande orange.
  - L'utilisation de l'imprimante avec la bande orange ou le matériel d'emballage encore fixé risque d'entraîner un dysfonctionnement.
- 2 Ouvrez l'unité de numérisation / capot et retirez la bande orange.



- 3 Fermez l'unité de numérisation / capot.
  - Ouvrez complètement l'unité de numérisation / capot, puis fermez-la.

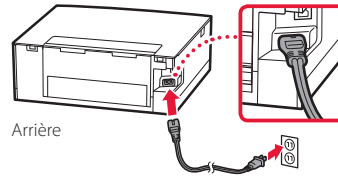


▲ Attention  
Surveillez vos doigts.

## 3. Mise sous tension de l'imprimante



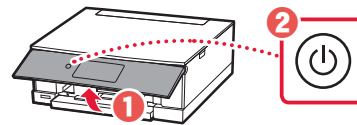
- 1 Branchez le cordon d'alimentation.



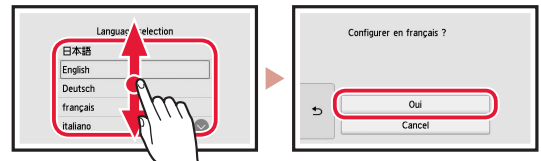
### Important

À ce stade, ne branchez aucun autre câble.

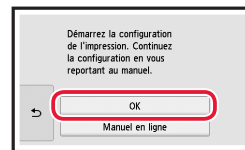
- 2 Ouvrez le panneau de contrôle et appuyez sur le bouton **MARCHE (ON)**.



- 3 Faites glisser et touchez pour sélectionner votre langue, puis touchez **Oui**.



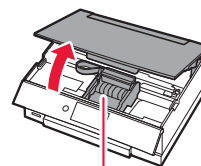
- 4 Touchez **OK**.



## 4. Installation des cartouches d'encre



- 1 Ouvrez l'unité de numérisation / capot.

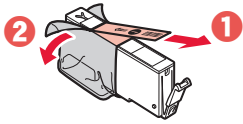


### Attention

Évitez tout contact avec le support de tête d'impression tant que celui-ci n'est pas arrêté.

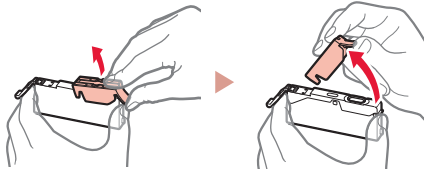
## Configuration de l'imprimante

- 2 Retirez la bande et le film sur la cartouche d'encre.



- Vérifiez qu'il ne reste aucune bande.

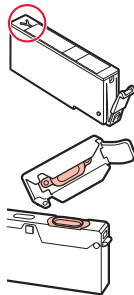
- 3 Retirez doucement le capuchon orange.



### Important

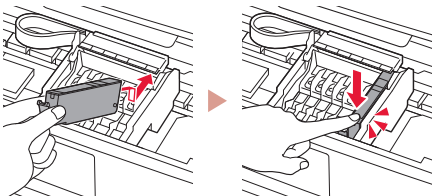
- N'appuyez pas sur la cartouche d'encre alors que le trou d'arrivée d'air en forme de Y est obstrué.

- Ne touchez pas les zones signalées en rouge.

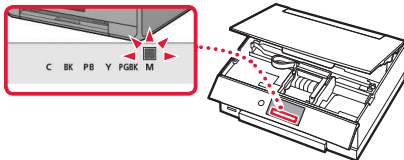


- 4 Installez la cartouche d'encre.

- Insérez la cartouche d'encre dans la tête d'impression et appuyez dessus jusqu'à ce qu'un clic se produise.



- 5 Vérifiez que la couleur de la cartouche d'encre que vous avez installée s'affiche à l'écran.

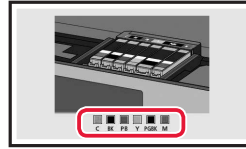


### Important

Si la couleur ne s'affiche pas à l'écran alors que vous avez installé la cartouche d'encre, la couleur de la cartouche d'encre est peut-être fautive, ou vous avez peut-être installé une cartouche d'encre non prise en charge par l'imprimante, par exemple une cartouche avec un numéro de modèle différent. Installez une cartouche d'encre de la bonne couleur ou utilisez la cartouche d'encre fournie pour la configuration.

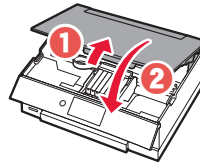
- 6 Répétez les étapes 2 à 5 pour installer toutes les cartouches d'encre.

- Vérifiez que toutes les couleurs s'affichent.



- 7 Fermez l'unité de numérisation / capot.

- L'imprimante commence à s'initialiser.



### Attention

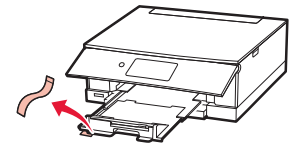
Surveillez vos doigts.

## 5. Chargement du papier

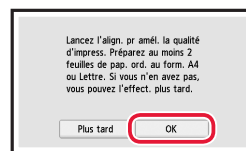


### Vérifiez !

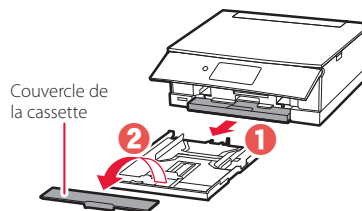
Retirez la bande orange.



- 1 Touchez OK.

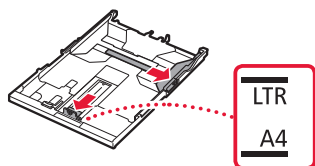


- 2 Retirez la cassette de l'imprimante et retirez le couvercle de la cassette.



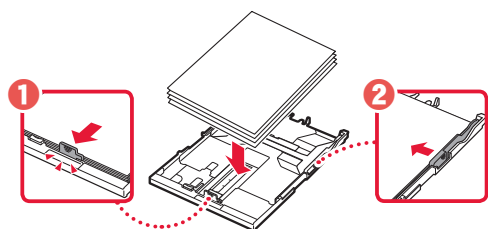
### 3 Faites glisser séparément les guides papier.

- Faites glisser le guide papier droit vers le bord droit. Alignez le guide papier avant sur la marque Lettre ou A4.

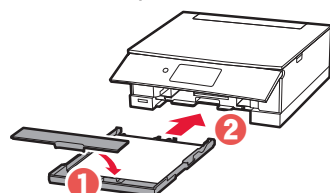


### 4 Chargez du papier.

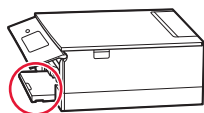
- Chargez au moins 2 feuilles de papier ordinaire au format Lettre ou A4 avec la face à imprimer vers le bas.
- Placez le papier contre le guide papier avant et alignez le guide papier droit sur la largeur du papier.



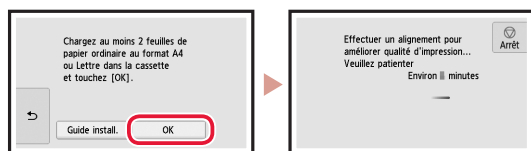
### 5 Fixez le couvercle de la cassette et remettez la cassette en place.



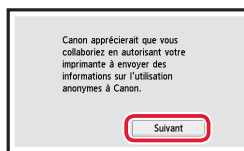
- Observez-la depuis le côté pour confirmer qu'elle se présente comme dans le diagramme.



### 6 Touchez OK.

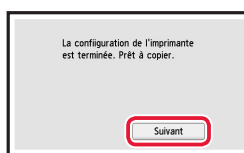


### 7 Touchez Suivant.

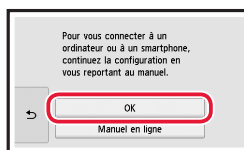


- Suivez les instructions à l'écran pour poursuivre la configuration. Cela inclut des sélections relatives à l'envoi d'informations. Reportez-vous à « Envoi d'informations à Canon » dans **Sécurité et informations importantes**.

### 8 Touchez Suivant.



### 9 Touchez OK.



### 10 Assurez-vous que l'écran suivant s'affiche.



Pour utiliser l'imprimante sans connecter aucun autre périphérique, la configuration est terminée.

## Configuration de l'imprimante

### Quel périphérique connectez-vous ?



Ordinateur



Ordinateur et  
smartphone



Smartphone

### 6-a

## Connexion à un ordinateur

Si vous utilisez plusieurs ordinateurs, effectuez ces étapes sur chaque ordinateur.



- 1 Accès au site Web Canon à partir d'un ordinateur.

<https://ij.start.canon>



- 2 Sélectionnez  **Configuration**.

- 3 Entrez le nom de modèle de votre imprimante et cliquez sur **Accéder**.

- 4 Cliquez sur **Démarrer**.

- 5 Cliquez sur **Si vous avez déjà préparé votre imprimante, allez à Connecter**.

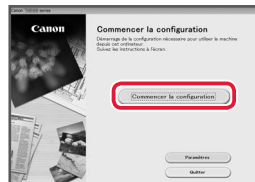
#### »»» Remarque

Les étapes suivantes concernent les utilisateurs Windows (sauf Windows 10 en mode S) et macOS. Pour les autres systèmes d'exploitation, continuez la configuration en suivant les instructions à l'écran.

- 6 Cliquez sur **Télécharger**.

- 7 Exécutez le fichier téléchargé.

- 8 Cliquez sur **Commencer la configuration**.



- 9 Suivez les instructions à l'écran.

- Ces opérations peuvent prendre du temps.
- Pour vous connecter aussi à un smartphone, voir « 6-b. Connexion à un smartphone » à la page 5.

#### Utilisation du CD-ROM d'installation pour Windows

Cliquez deux fois sur **EasySetup.exe** à partir du CD-ROM, puis continuez à partir de l'étape 3. Si vous ne disposez pas d'une connexion Internet, ouvrez le dossier **win** à partir du CD-ROM et cliquez deux fois sur **SETUP.exe**. Cette procédure permet d'installer le pilote d'imprimante.

## 6-b

### Connexion à un smartphone

Si vous utilisez plusieurs smartphones, effectuez ces étapes sur chaque smartphone.



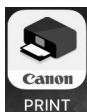
Préparez les éléments suivants avant de démarrer.

- 1 Activez le paramètre Wi-Fi sur votre smartphone.
- 2 Connectez votre smartphone au routeur sans fil (si vous disposez d'un routeur sans fil).

Pour plus d'informations, consultez la documentation de votre smartphone et du routeur sans fil.

#### 1 Installez l'application « Canon PRINT Inkjet/SELPHY » sur votre smartphone.

- Scannez le code QR qui apparaît à droite pour accéder au site Web Canon, puis téléchargez l'application.



#### 2 Ouvrez l'application installée.

#### 3 Suivez les instructions à l'écran fournies par l'application pour ajouter votre imprimante.

---

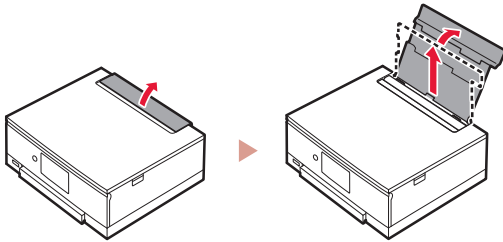
Une fois que vous avez ajouté votre imprimante, vous pouvez imprimer depuis votre smartphone. Pour imprimer des photos, voir « Chargement de papier photo » à la page 6.

---

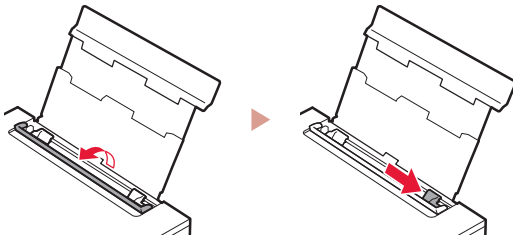
## Chargement de papier photo

Le papier photo peut être chargé uniquement dans le réceptacle arrière.

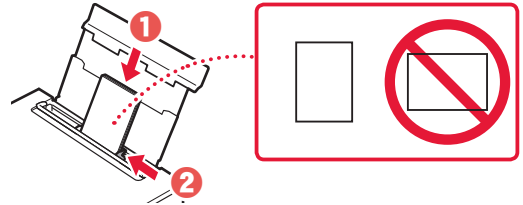
- 1 Ouvrez le couvercle du réceptacle arrière et déployez le support papier.



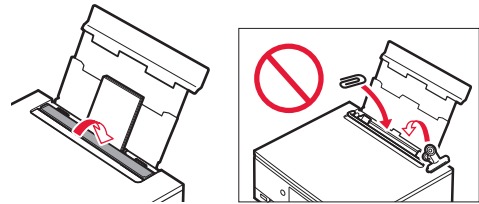
- 2 Ouvrez le couvercle de la fente d'alimentation et faites glisser le guide papier droit vers l'extrême droite.



- 3 Chargez plusieurs feuilles de papier photo face à imprimer vers le haut et faites glisser le guide papier latéral contre le bord de la pile de papier.

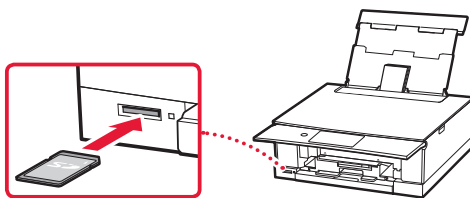


- 4 Fermez le couvercle de la fente d'alimentation.
  - Suivez les instructions à l'écran pour définir les informations sur le papier chargé.



## Impression de photos enregistrées sur une carte mémoire

- 1 Mettez l'imprimante sous tension.
- 2 Chargez plusieurs feuilles de papier photo.
- 3 Insérez la carte mémoire dans l'emplacement de carte.



- 4 Faites défiler les photos vers la droite ou vers la gauche et sélectionnez-en une.
- 5 Touchez le bouton **Couleur (Color)** pour lancer l'impression.

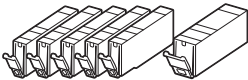
# Einrichten des Druckers

**Onlineeinrichtung**  
<https://ij.start.canon>



## 1. Inhalt der Box

- Tintenbehälter für die Einrichtung
- Netz Kabel
- Installations-CD-ROM für Windows
- Sicherheitsinformationen und wichtige Hinweise
- Inbetriebnahme (dieses Handbuch)



## 2. Entfernen des Verpackungsmaterials



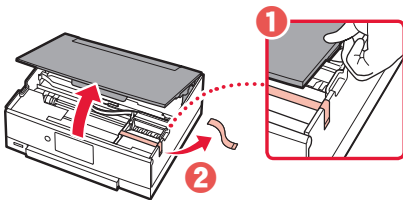
### Wichtig

Wenn der Druckvorgang beginnt, wird das Bedienfeld geöffnet und das Papierausgabefach fährt automatisch aus. Legen Sie keine Gegenstände vor dem Drucker ab.

### 1 Entfernen und entsorgen Sie das gesamte Verpackungsmaterial sowie das orangefarbene Klebeband.

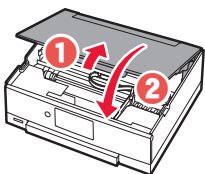
- Es kann zu Fehlfunktionen des Druckers kommen, wenn sich das orangefarbene Klebeband oder Verpackungsmaterial bei Verwendung des Druckers noch an diesem befindet.

### 2 Öffnen Sie das Scan-Modul/die Abdeckung und entfernen Sie das orangefarbene Klebeband.



### 3 Schließen Sie das Scan-Modul/die Abdeckung.

- Öffnen Sie das Scan-Modul/die Abdeckung vollständig und schließen Sie es/sie dann wieder.

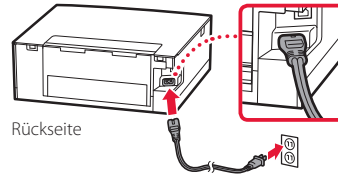


▲ **Vorsicht**  
Passen Sie auf Ihre Finger auf.

## 3. Einschalten des Druckers



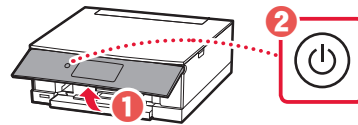
### 1 Schließen Sie das Netzkabel an.



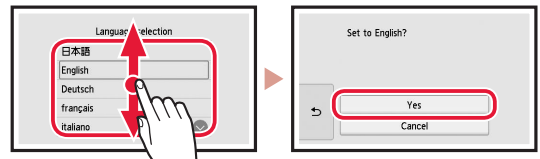
### Wichtig

Schließen Sie zum jetzigen Zeitpunkt keine weiteren Kabel an.

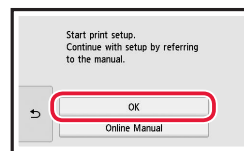
### 2 Öffnen Sie das Bedienfeld und drücken Sie auf die Taste **EIN (ON)**.



### 3 Um eine Sprache auszuwählen, scrollen Sie zu der gewünschten Sprache, tippen Sie darauf und tippen Sie dann auf **Ja (Yes)**.



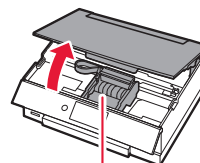
### 4 Tippen Sie auf **OK**.



## 4. Installation der Tintenbehälter



### 1 Öffnen Sie das Scan-Modul/die Abdeckung.

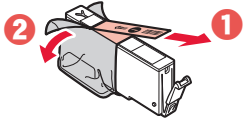


### Vorsicht

Berühren Sie den Druckkopfhalter nicht, solange er sich bewegt.

## Einrichten des Druckers

- 2 Entfernen Sie das Klebeband und die Folie vom Tintenbehälter.



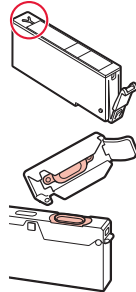
- Überprüfen Sie, ob das gesamte Klebeband entfernt wurde.

- 3 Nehmen Sie die orangefarbene Kappe langsam ab.



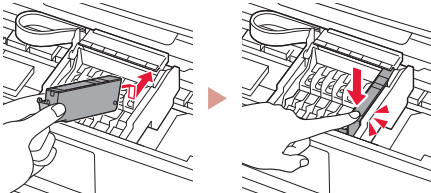
### Wichtig

- Üben Sie keinen Druck auf den Tintenbehälter aus, wenn das Y-förmige Loch blockiert ist.
- Berühren Sie nicht die rot dargestellten Bereiche.

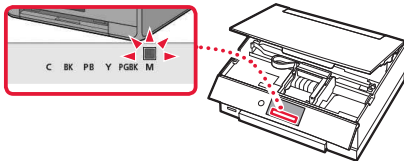


- 4 Setzen Sie den Tintenbehälter ein.

- Setzen Sie den Tintenbehälter in den Druckkopf ein und drücken Sie ihn nach unten, bis er einrastet.



- 5 Überprüfen Sie, ob die Farbe des eingesetzten Tintenbehälters auf dem Bildschirm angezeigt wird.

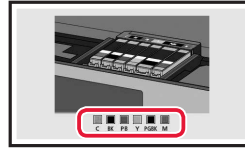


### Wichtig

Wenn die Farbe nicht auf dem Bildschirm angezeigt wird, obwohl Sie den Tintenbehälter eingesetzt haben, ist die Farbe des Tintenbehälters möglicherweise falsch oder Sie haben beispielsweise einen Tintenbehälter mit einer anderen Modellnummer eingesetzt, der von diesem Drucker nicht unterstützt wird. Setzen Sie entweder einen Tintenbehälter der richtigen Farbe ein oder verwenden Sie den im Lieferumfang enthaltenen Tintenbehälter für die Einrichtung.

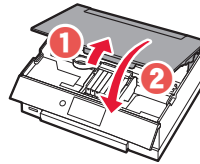
- 6 Wiederholen Sie die Schritte 2 bis 5, um alle Tintenbehälter einzusetzen.

- Überprüfen Sie, ob alle Farben angezeigt werden.



- 7 Schließen Sie das Scan-Modul/die Abdeckung.

- Der Drucker wird initialisiert.



### Vorsicht

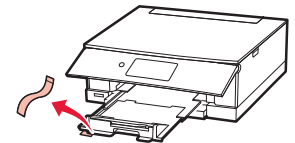
Passen Sie auf Ihre Finger auf.

## 5. Einlegen von Papier

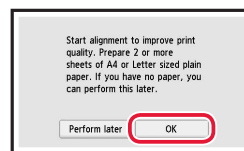


### Überprüfen!

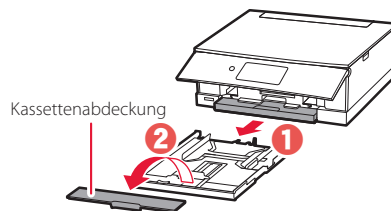
Entfernen Sie sämtliches orangefarbene Klebeband.



- 1 Tippen Sie auf **OK**.



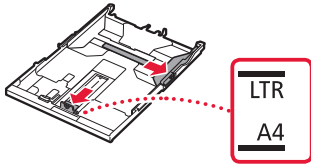
- 2 Entnehmen Sie die Kassette aus dem Drucker und entfernen Sie die Kassettenabdeckung.





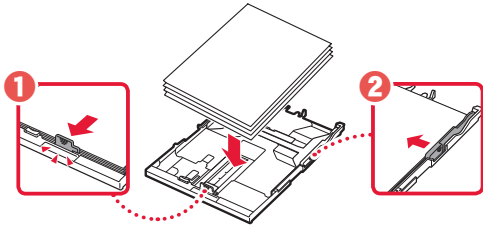
### 3 Schieben Sie die Papierführungen auseinander.

- Schieben Sie die rechte Papierführung an die rechte Kante. Richten Sie die vordere Papierführung an der Markierung für Letter oder A4 aus.

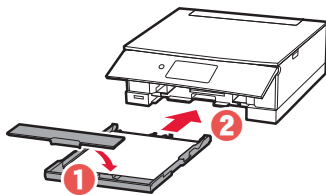


### 4 Legen Sie Papier ein.

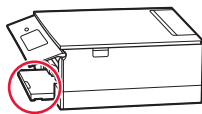
- Legen Sie 2 oder mehr Blatt Normalpapier des Formats Letter oder A4 mit der bedruckbaren Seite nach unten ein.
- Schieben Sie das Papier gegen die vordere Papierführung und richten Sie die rechte Papierführung an der Breite des Papiers aus.



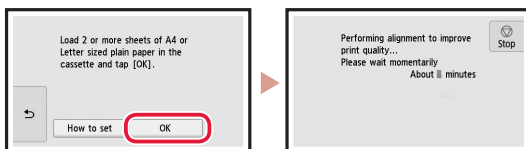
### 5 Bringen Sie die Kassettenabdeckung an und setzen Sie die Kassette wieder ein.



- Sehen Sie es sich von der Seite an und stellen Sie sicher, dass es der Abbildung entspricht.



### 6 Tippen Sie auf **OK**.



### 7 Tippen Sie auf **Weiter (Next)**.

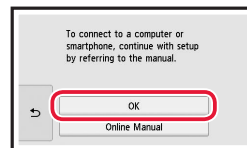


- Befolgen Sie die Anweisungen auf dem Bildschirm, um mit der Einrichtung fortzufahren. Dazu gehört das Vornehmen von Auswahlen, die im Zusammenhang mit dem Senden von Informationen stehen. Siehe „Information an Canon senden“ in **Sicherheitsinformationen und wichtige Hinweise**.

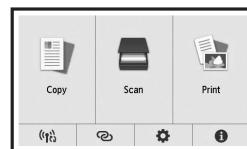
### 8 Tippen Sie auf **Weiter (Next)**.



### 9 Tippen Sie auf **OK**.



### 10 Überprüfen Sie, ob der folgende Bildschirm angezeigt wird.



Wenn Sie den Drucker ohne Anschluss weiterer Geräte verwenden, ist die Einrichtung nun abgeschlossen.

### Mit welchem Gerät stellen Sie eine Verbindung her?



Computer



Computer und  
Smartphone



Smartphone

## 6-a

### Herstellen einer Verbindung mit einem Computer


Wenn Sie mehrere Computer verwenden, führen Sie diese Schritte auf jedem Computer aus.



- 1 Greifen Sie von einem Computer aus auf die Canon-Website zu.

<https://ij.start.canon>

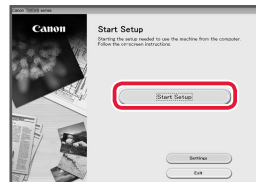


- 2 Wählen Sie  **Einrichten** aus.
- 3 Geben Sie den Modellnamen Ihres Druckers ein und klicken Sie auf **Los**.
- 4 Klicken Sie auf **Start**.
- 5 Klicken Sie auf **Wenn Sie Ihren Drucker bereits vorbereitet haben, wechseln Sie zu Verbindung herstellen**.

#### »»» Hinweis

Die folgenden Schritte gelten für Benutzer von Windows (ausgenommen Windows 10 in S mode) und Benutzer von macOS. Wenn Sie ein anderes Betriebssystem verwenden, fahren Sie mit der Einrichtung fort, indem Sie stattdessen die Anweisungen auf dem Bildschirm befolgen.

- 6 Klicken Sie auf **Herunterladen**.
- 7 Führen Sie die heruntergeladene Datei aus.
- 8 Klicken Sie auf **Setup starten (Start Setup)**.



- 9 Befolgen Sie die Anweisungen auf dem Bildschirm.
  - Diese Verfahren können einige Zeit dauern.
  - Um auch eine Verbindung mit einem Smartphone herzustellen, lesen Sie „6-b. Herstellen einer Verbindung mit einem Smartphone“ auf Seite 5.

#### Verwenden der Installations-CD-ROM für Windows

Doppelklicken Sie in der CD-ROM auf **EasySetup.exe** und fahren Sie mit Schritt 3 fort. Wenn Sie keinen Internetzugang haben, öffnen Sie den Ordner **win** auf der CD-ROM und doppelklicken Sie auf **SETUP.exe**. Dadurch wird der Druckertreiber installiert.

## 6-b

### Herstellen einer Verbindung mit einem Smartphone

Wenn Sie mehrere Smartphones verwenden, führen Sie diese Schritte auf jedem Smartphone aus.



**Bereiten Sie Folgendes vor, bevor Sie beginnen.**

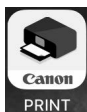
- 1 Aktivieren Sie die Wi-Fi-Einstellung auf Ihrem Smartphone.
- 2 Stellen Sie eine Verbindung zwischen Ihrem Smartphone und dem Wireless Router her (wenn Sie über einen Wireless Router verfügen).  
Weitere Informationen finden Sie in den Handbüchern zu Ihrem Smartphone und dem Wireless Router.

#### 1 Installieren Sie die App „Canon PRINT Inkjet/SELPHY“ auf Ihrem Smartphone.

- Scannen Sie den QR-Code auf der rechten Seite, um die Canon-Website aufzurufen, und laden Sie dann die App herunter.



#### 2 Öffnen Sie die installierte App.



#### 3 Befolgen Sie die Anweisungen auf dem App-Bildschirm, um Ihren Drucker hinzuzufügen.

---

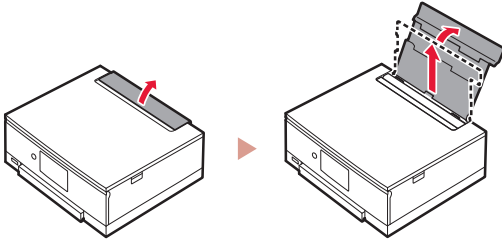
Sobald Sie Ihren Drucker hinzugefügt haben, können Sie über Ihr Smartphone drucken.  
Informationen zum Drucken von Fotos finden Sie unter „Einlegen von Fotopapier“ auf Seite 6.

---

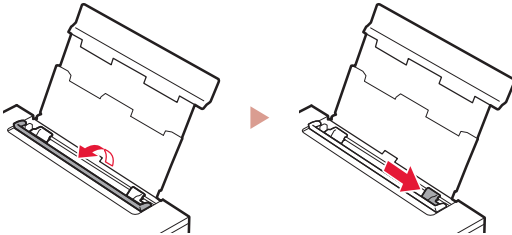
# Einlegen von Fotopapier

Fotopapier kann nur in das hintere Fach eingelegt werden.

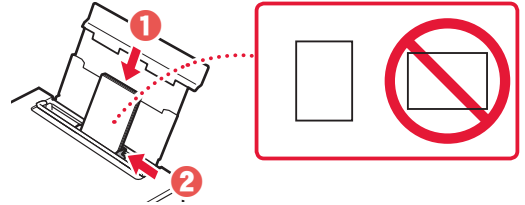
- 1 Öffnen Sie die Abdeckung des hinteren Fachs und ziehen Sie die Papierstütze heraus.



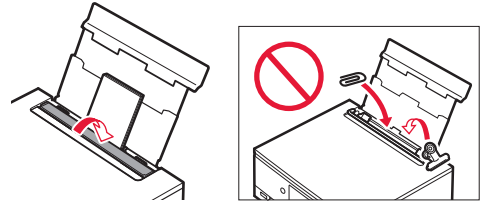
- 2 Öffnen Sie die Abdeckung für den Einzugsschacht und schieben Sie die rechte Papierführung ganz nach rechts.



- 3 Legen Sie mehrere Blätter Fotopapier mit der bedruckbaren Seite nach oben ein und schieben Sie die seitliche Papierführung gegen die Kante des Papierstapels.



- 4 Schließen Sie die Abdeckung für den Einzugsschacht.
  - Befolgen Sie die Anweisungen auf dem Bildschirm, um Informationen für das eingelegte Papier festzulegen.

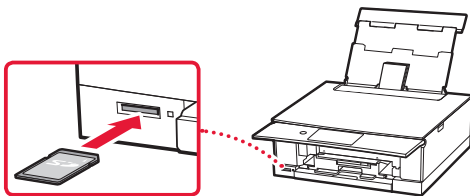


# Ausdrucken von auf einer Speicherkarte gespeicherten Fotos

- 1 Schalten Sie den Drucker ein.

- 2 Legen Sie mehrere Blätter Fotopapier ein.

- 3 Setzen Sie die Speicherkarte in den Kartensteckplatz ein.



- 4 Wischen Sie nach rechts und links, um die Fotos zu durchsuchen, und wählen Sie eins aus.

- 5 Tippen Sie auf die Schaltfläche **Farbe (Color)**, um den Druckvorgang zu starten.

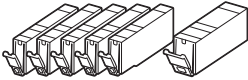
# De printer instellen

**Online installatie**  
<https://ij.start.canon>



## 1. Inhoud van de doos

• Inktanks voor installatie



• Netsnoer

• Installatie-cd-rom voor Windows

• Veiligheidsinformatie en belangrijke informatie

• Aan de Slag-gids (deze handleiding)

## 2. Verpakkingsmateriaal verwijderen



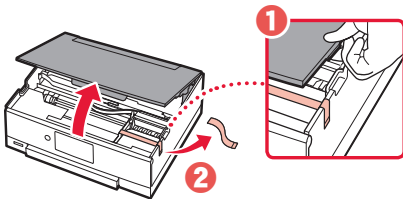
### Belangrijk

Het bedieningspaneel wordt geopend en de papieruitvoerlade wordt automatisch verlengd wanneer het afdrukken wordt gestart. Leg niets voor de printer.

### 1 Verwijder het verpakkingsmateriaal en de oranje tape en gooi het weg.

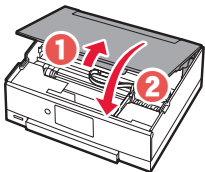
- Als u de printer gebruikt terwijl de oranje tape of het verpakkingsmateriaal nog is geplaatst, kan dit leiden tot een printerstoring.

### 2 Open de scaneenheid / klep en verwijder de oranje tape.



### 3 Sluit de scaneenheid / klep.

- Open de scaneenheid / klep volledig en sluit deze vervolgens.

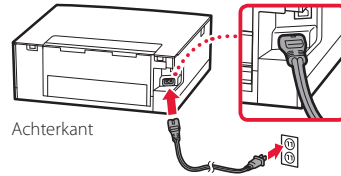


▲ Let op  
Kijk uit met uw vingers.

## 3. De printer inschakelen



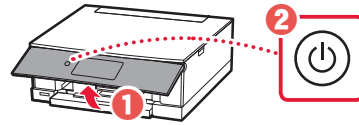
### 1 Sluit het netsnoer aan.



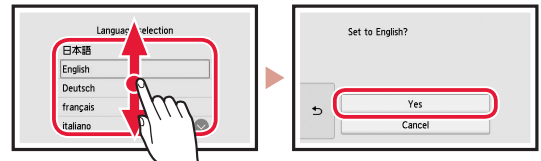
### Belangrijk

Sluit op dit moment nog geen andere kabels aan.

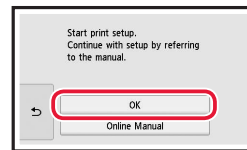
### 2 Open het bedieningspaneel en druk op de knop AAN (ON).



### 3 Blader en tik om uw taal te selecteren en tik daarna op Ja (Yes).



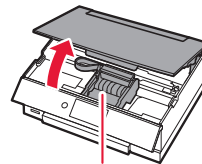
### 4 Tik op OK.



## 4. De inktanks installeren



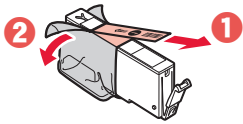
### 1 Open de scaneenheid / klep.



▲ Let op  
Raak de printkophouder niet aan totdat deze stopt met bewegen.

## De printer instellen

### 2 Verwijder de tape en de folie van de inkttank.



- Controleer of er geen tape is achtergebleven.

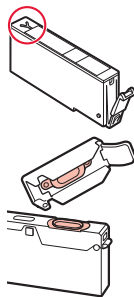
### 3 Verwijder langzaam het oranje kapje.



#### Belangrijk

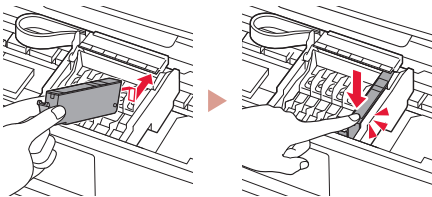
- Druk de inkttank niet samen terwijl u de Y-vormige luchtopening blokkeert.

- Raak de aangegeven rode gebieden niet aan.

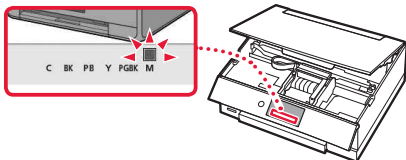


### 4 Installeer de inkttank.

- Plaats de inkttank in de printkop en druk deze omlaag totdat hij klikt.



### 5 Controleer of de kleur van de geplaatste inkttank op het scherm wordt weergegeven.

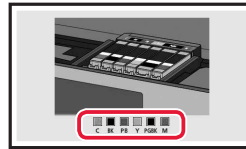


#### Belangrijk

Als de kleur niet op het scherm wordt weergegeven, ook al hebt u de inkttank geplaatst, dan is de kleur van de inkttank mogelijk onjuist of hebt u mogelijk een inkttank met een ander modelnummer geïnstalleerd die niet wordt ondersteund door deze printer. Plaats een inkttank voor de juiste kleur of gebruik de bijgeleverde inkttank voor de installatie.

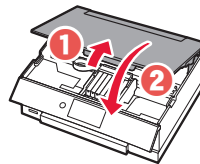
### 6 Herhaal de stappen 2 tot en met 5 om alle inkttanks te plaatsen.

- Controleer of alle kleuren worden weergegeven.



### 7 Sluit de scaneenheid / klep.

- De initialisatie van de printer wordt gestart.



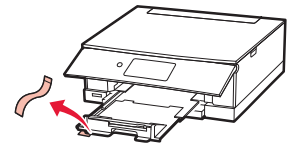
- ▲ Let op  
Kijk uit met uw vingers.

## 5. Papier plaatsen

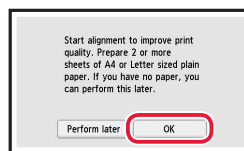


#### Controleer!

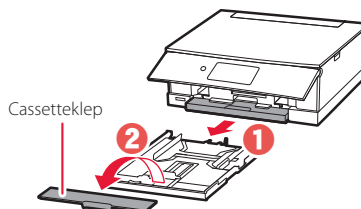
Verwijder alle oranje tape.



### 1 Tik op OK.

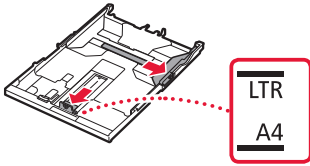


### 2 Verwijder de cassette uit de printer en verwijder de cassetteklep.



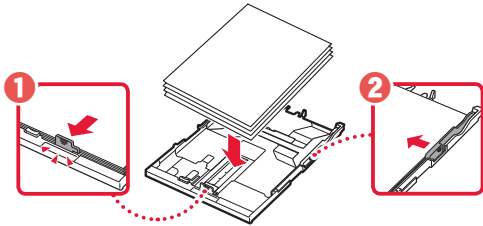
### 3 Schuif de papiergeleiders uit elkaar.

- Schuif de rechterpapiergeleider naar de rechterraand. Lijn de voorste papiergeleider uit met de markering Letter of A4.

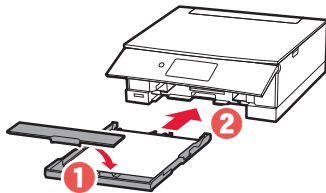


### 4 Plaats papier.

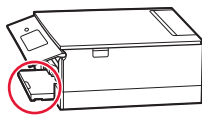
- Plaats 2 of meer vellen normaal papier van Letter- of A4-formaat met de afdrukbare omlaag.
- Plaats het papier tegen de voorste papiergeleider en lijn de rechterpapiergeleider uit met de breedte van het papier.



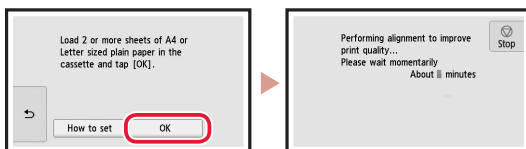
### 5 Bevestig de cassetteklep en plaats de cassette terug.



- Kijk vanaf de zijkant om te controleren of het eruitziet zoals in de afbeelding.



### 6 Tik op **OK**.

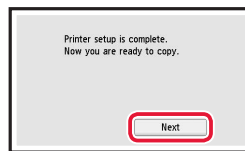


### 7 Tik op **Volgende (Next)**.

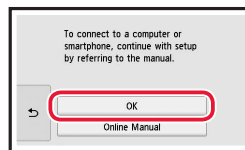


- Volg de instructies op het scherm om door te gaan met de installatie. Hierbij moet u selecties maken die betrekking hebben op het verzenden van informatie. Raadpleeg "Gegevens verzenden naar Canon" in **Veiligheidsinformatie en belangrijke informatie**.

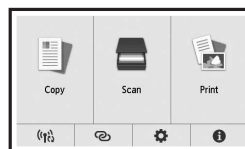
### 8 Tik op **Volgende (Next)**.



### 9 Tik op **OK**.



### 10 Controleer of het volgende scherm verschijnt.



Als u de printer wilt gebruiken zonder deze met andere apparaten te verbinden, is de installatie nu voltooid.

### Met welk apparaat maakt u verbinding?



Computer



Computer en  
smartphone



Smartphone

## 6-a

### Verbinden met een computer

Als u meerdere computers gebruikt, voert u deze stappen uit op elke computer.

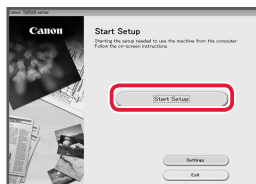


- 1 Ga naar de Canon-website op een computer.  
 
- 2 Selecteer  **Installatie**.
- 3 Voer de modelnaam van de printer in en klik op **Ga**.
- 4 Klik op **Start**.
- 5 Klik op **Als u uw printer al hebt voorbereid, gaat u naar Verbinden**.

#### »»» Opmerking

De volgende stappen zijn bedoeld voor gebruikers van Windows (behalve Windows 10 in S mode) en macOS. Voor andere besturingssystemen gaat u verder met de installatie door in plaats daarvan de instructies op het scherm uit te voeren.

- 6 Klik op **Downloaden**.
- 7 Voer het gedownloadde bestand uit.
- 8 Klik op **Beginnen met instellen (Start Setup)**.



- 9 Volg de instructies op het scherm.
  - Deze handelingen kunnen enige tijd duren.
  - Als u ook verbinding wilt maken met een smartphone, raadpleegt u "6-b. Verbinden met een smartphone" op pagina 5.

#### De installatie-cd-rom gebruiken voor Windows

Dubbelklik op **EasySetup.exe** vanaf de cd-rom en ga verder vanaf stap 3. Als u geen internetverbinding hebt, opent u de map **win** van de cd-rom en dubbelklikt u op **SETUP.exe**. Hiermee wordt het printerstuurprogramma geïnstalleerd.



## 6-b

### Verbinden met een smartphone

Als u meerdere smartphones gebruikt, voert u deze stappen uit op elke smartphone.



Bereid het volgende voor voordat u begint.

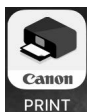
- 1 Schakel de Wi-Fi-instelling op uw smartphone in.
- 2 Verbind uw smartphone met de draadloze router (als u een draadloze router gebruikt).  
Raadpleeg de handleiding van uw smartphone en draadloze router voor meer informatie.

#### 1 Installeer de app "Canon PRINT Inkjet/SELPHY" op uw smartphone.

- Scan de QR-code rechts om naar de Canon-website te gaan en de app te downloaden.



#### 2 Open de geïnstalleerde app.



#### 3 Volg de instructies op het scherm in de app om de printer toe te voegen.

---

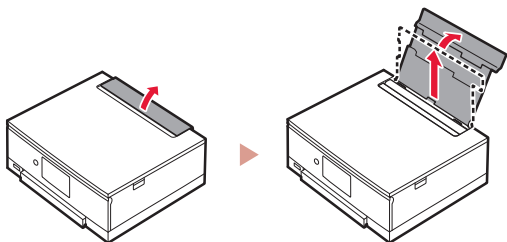
Nadat u de printer hebt toegevoegd, kunt u afdrukken vanaf uw smartphone.  
Als u foto's wilt afdrukken, raadpleegt u "Fotopapier plaatsen" op pagina 6.

---

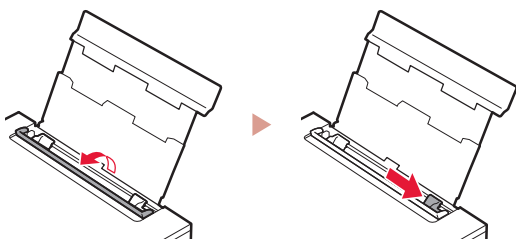
## Fotopapier plaatsen

Fotopapier kan alleen in de achterste lade worden geplaatst.

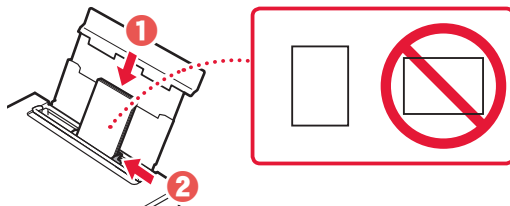
- 1 Open de klep van de achterste lade en trek de papiersteun uit.



- 2 Open het klepje over de invoersleuf en schuif de papiergeleider aan de rechterkant helemaal naar rechts.



- 3 Plaats meerdere vellen fotopapier met de afdrukkzijde omhoog en schuif de papiergeleider aan de zijkant tegen de rand van de stapel papier.

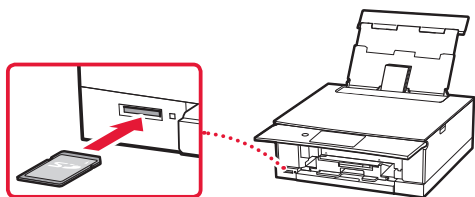


- 4 Sluit het klepje over de invoersleuf.
  - Volg de instructies op het scherm om informatie over het geplaatste papier in te stellen.



## Foto's afdrukken die zijn opgeslagen op een geheugenkaart

- 1 Zet de printer aan.
- 2 Plaats meerdere vellen fotopapier.
- 3 Plaats de geheugenkaart in de kaartsleuf.
- 4 Veeg naar links of naar rechts door de foto's en selecteer een foto.
- 5 Tik op de knop **Kleur (Color)** om het afdrukken te starten.



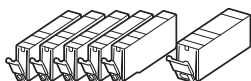
# Impostazione della stampante

Impostazione online  
<https://ij.start.canon>



## 1. Contenuto della scatola

● Serbatoi d'inchiostro per l'impostazione



- Cavo di alimentazione
- CD-ROM di installazione per Windows
- Informazioni importanti e sulla sicurezza
- Guida Rapida (questo manuale)

## 2. Rimozione del materiale da imballaggio



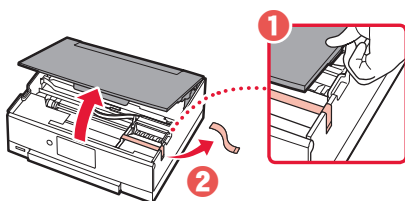
### ►►► Importante

Quando si avvia la stampa, il pannello dei comandi si apre e il vassoio di uscita della carta si estende automaticamente. Non posizionare oggetti davanti alla stampante.

1 Rimuovere e disfarsi di eventuale materiale da imballaggio e del nastro arancione.

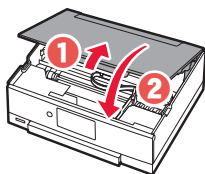
- L'utilizzo della stampante con il nastro arancione o il materiale di imballaggio ancora attaccato, potrebbe causare il malfunzionamento della stampante.

2 Aprire l'unità di scansione / coperchio e rimuovere il nastro arancione.



3 Chiudere l'unità di scansione / coperchio.

- Aprire completamente l'unità di scansione / coperchio, quindi chiuderla.

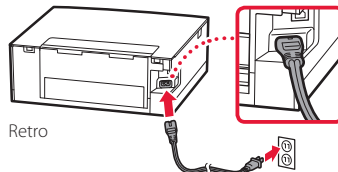


▲ **Attenzione**  
Fare attenzione alle dita.

## 3. Accensione della stampante



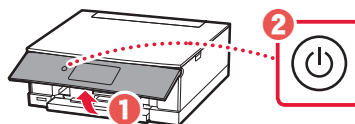
1 Collegare il cavo di alimentazione.



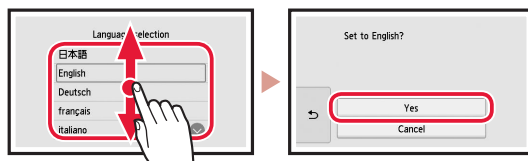
### ►►► Importante

In questa fase, non collegare altri cavi.

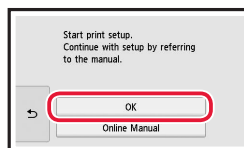
2 Aprire il pannello dei comandi e premere il pulsante **ON**.



3 Scorrere e toccare per selezionare la propria lingua, quindi toccare **Sì (Yes)**.



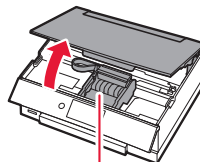
4 Toccare **OK**.



## 4. Installazione dei serbatoi d'inchiostro



1 Aprire l'unità di scansione / coperchio.

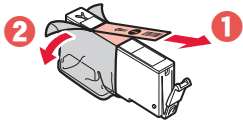


### ▲ Attenzione

Non toccare il supporto della testina di stampa fino a quando non si ferma.

## Impostazione della stampante

- 2 Rimuovere il nastro e la pellicola dal serbatoio d'inchiostro.



- Controllare che non vi sia rimasto del nastro.

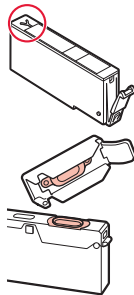
- 3 Rimuovere lentamente il coperchietto arancione.



### Importante

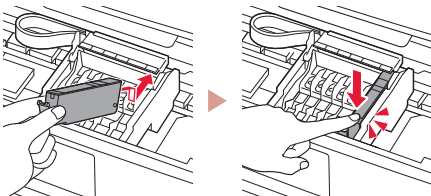
- Non schiacciare il serbatoio d'inchiostro tenendo il foro dell'aria a forma di Y bloccato.

- Non toccare le aree mostrate in rosso.

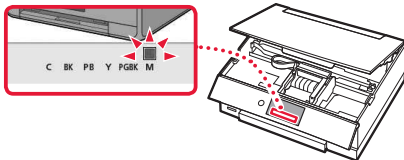


- 4 Installare il serbatoio d'inchiostro.

- Inserire il serbatoio d'inchiostro nella testina di stampa e premere verso il basso finché non scatta in posizione.



- 5 Verificare che il colore del serbatoio d'inchiostro installato appaia sullo schermo.

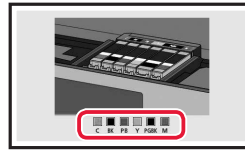


### Importante

Se il colore non è visualizzato sullo schermo nonostante sia stato installato il serbatoio d'inchiostro corrispondente, è possibile che il colore del serbatoio d'inchiostro sia sbagliato o che sia stato installato un serbatoio d'inchiostro non supportato dalla stampante, ad esempio uno avente un numero di modello diverso. Installare un serbatoio d'inchiostro del colore esatto o utilizzare il serbatoio d'inchiostro fornito per l'impostazione.

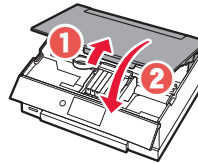
- 6 Ripetere i passi da 2 a 5 per installare tutti i serbatoi d'inchiostro.

- Verificare che tutti i colori vengano visualizzati.



- 7 Chiudere l'unità di scansione / coperchio.

- Verrà avviata l'inizializzazione della stampante.



### Attenzione

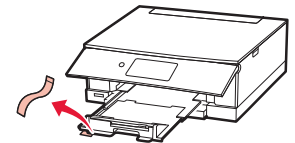
Fare attenzione alle dita.

## 5. Caricamento della carta

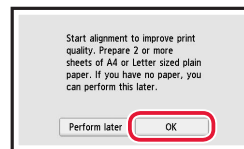


### Verificare!

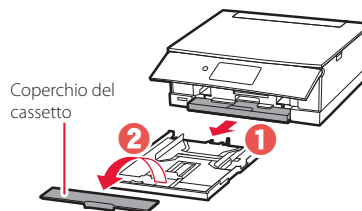
Rimuovere l'eventuale nastro arancione.



- 1 Toccare **OK**.

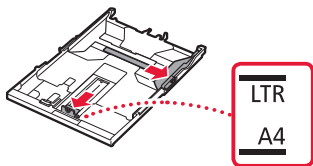


- 2 Rimuovere il cassetto dalla stampante, quindi rimuovere il coperchio del cassetto.



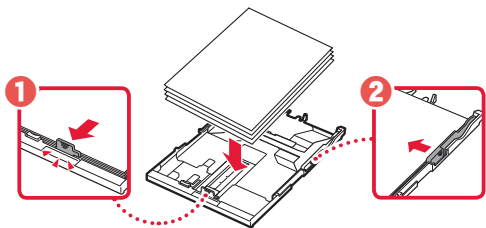
### 3 Far scorrere le guide della carta.

- Far scorrere la guida della carta di destra verso il margine destro. Allineare la guida della carta anteriore con il segno Letter o A4.

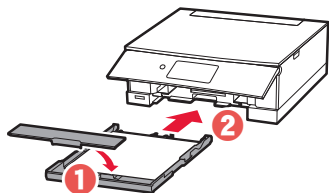


### 4 Caricare la carta.

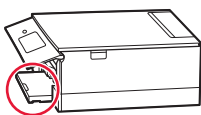
- Caricare 2 o più fogli di carta comune in formato Letter o A4 con il lato di stampa rivolto verso il basso.
- Posizionare la carta contro la guida della carta anteriore e allineare la guida della carta di destra alla larghezza della carta.



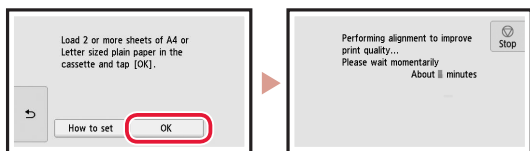
### 5 Collegare il coperchio del cassetto e reinserire il cassetto.



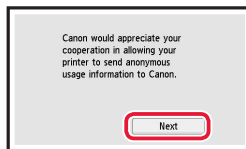
- Guardarlo lateralmente per assicurarsi che assomiglia al disegno.



### 6 Toccare OK.

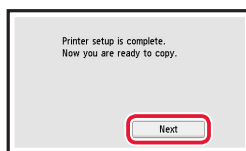


### 7 Toccare Avanti (Next).

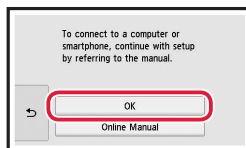


- Seguire le istruzioni visualizzate sullo schermo per continuare l'impostazione. Sono incluse le selezioni da effettuare in merito all'invio delle informazioni. Fare riferimento a "Invio di informazioni a Canon" in **Informazioni importanti e sulla sicurezza**.

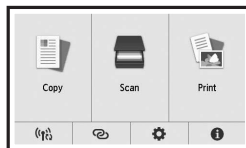
### 8 Toccare Avanti (Next).



### 9 Toccare OK.



### 10 Verificare che venga visualizzata la schermata seguente.



Se si intende utilizzare la stampante senza connettersi ad altre periferiche, l'impostazione è ora completa.

### Quale periferica si sta connettendo?



Computer



Computer e  
smartphone



Smartphone

## 6-a

### Connessione a un computer


Se si utilizzano più computer, eseguire questi passaggi su ciascun computer.



- 1 Accedere al sito Web di Canon da un computer.

<https://ij.start.canon>

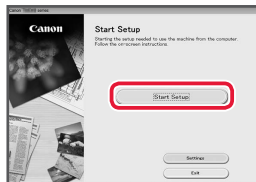


- 2 Selezionare  **Impostazione**.
- 3 Immettere il nome del modello della stampante e fare clic su **Vai**.
- 4 Fare clic su **Avvio**.
- 5 Fare clic su **Se la stampante è già preparata, connettersi**.

#### »»» Nota

Le seguenti procedure sono destinate agli utenti Windows (tranne Windows 10 in S mode) e macOS. Per gli altri sistemi operativi, continuare l'impostazione seguendo le istruzioni visualizzate.

- 6 Fare clic su **Scarica**.
- 7 Eseguire il file scaricato.
- 8 Fare clic su **Avvia impostazione (Start Setup)**.



- 9 Seguire le istruzioni visualizzate sullo schermo.
  - Queste operazioni possono richiedere del tempo.
  - Per connettersi anche a uno smartphone, vedere "6-b. Connessione a uno smartphone" a pagina 5.

#### Utilizzo del CD-ROM di installazione per Windows

Fare doppio clic su **EasySetup.exe** nel CD-ROM, quindi continuare dal passo 3. Se non si dispone di una connessione Internet, aprire la cartella **win** nel CD-ROM e fare doppio clic su **SETUP.exe**. Verrà installato il driver della stampante.

## 6-b

### Connessione a uno smartphone

Se si utilizzano più smartphone, eseguire questi passaggi su ciascuno smartphone.



Prima di iniziare, effettuare quanto segue.

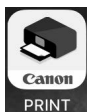
- 1 Abilitare l'impostazione Wi-Fi sullo smartphone.
- 2 Connettere lo smartphone al router wireless (se si dispone di un router wireless).

Per ulteriori informazioni, fare riferimento ai manuali dello smartphone e del router wireless.

- 1 Installare l'app "Canon PRINT Inkjet/SELPHY" sullo smartphone.
  - Eseguire la scansione del codice QR sulla destra per accedere al sito Web di Canon e scaricare l'app.



- 2 Aprire l'app installata.



- 3 Per aggiungere la stampante, attenersi alle istruzioni visualizzate nell'app.

---

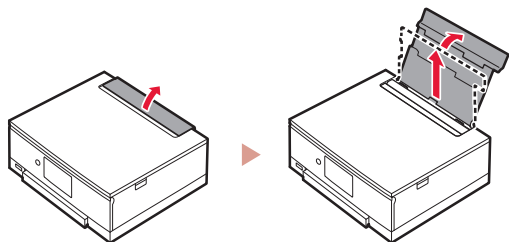
Una volta aggiunta la stampante, è possibile stampare dallo smartphone.  
Per stampare foto, vedere "Caricamento della carta fotografica" a pagina 6.

---

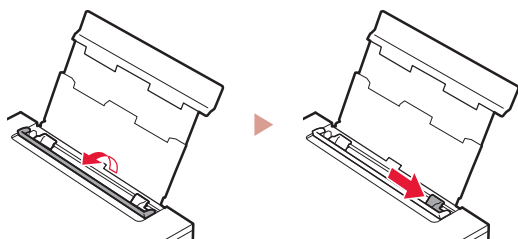
## Caricamento della carta fotografica

La carta fotografica può essere caricata solo nel vassoio posteriore.

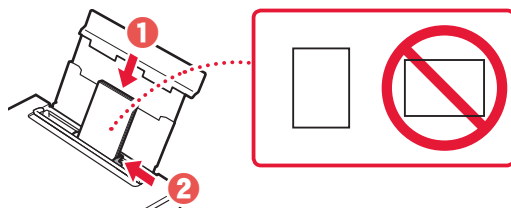
- 1 Aprire il coperchio del vassoio posteriore ed estendere il supporto per la carta.



- 2 Aprire il coperchio dell'alimentatore manuale e far scorrere la guida della carta di destra verso l'estrema destra.

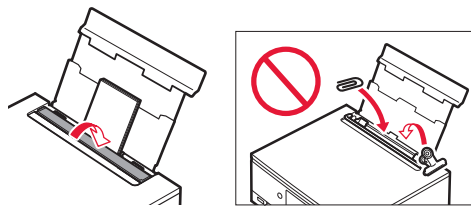


- 3 Caricare diversi fogli di carta fotografica con il lato di stampa rivolto verso l'alto e far scorrere la guida della carta laterale contro il bordo della risma di carta.



- 4 Chiudere il coperchio dell'alimentatore manuale.

- Seguire le istruzioni visualizzate sullo schermo per impostare le informazioni per la carta caricata.

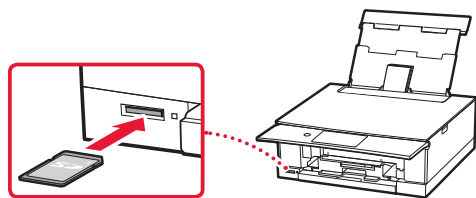


## Stampa di foto salvate in una scheda di memoria

- 1 Accendere la stampante.

- 2 Caricare diversi fogli di carta fotografica.

- 3 Inserire la scheda di memoria nello slot della scheda.



- 4 Scorrere a sinistra o a destra tra le foto e selezionarne una.

- 5 Toccare il pulsante **Colore (Color)** per avviare la stampa.



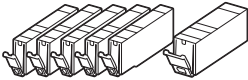
# Configurando a impressora

Configuração On-line  
<https://ij.start.canon>



## 1. Conteúdo da Caixa

- Cartuchos de tinta para configuração



- Cabo de alimentação
- CD-ROM de instalação para Windows
- Informações Importantes e Sobre Segurança
- Para Começar (este manual)

## 2. Removendo os materiais da embalagem



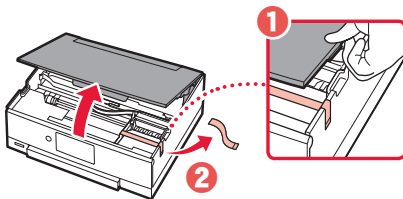
### Importante

Quando a impressão começa, o painel de controle abre e a bandeja de saída do papel é estendida automaticamente. Não coloque objetos na frente da impressora.

### 1 Remova e descarte quaisquer materiais de embalagem e a fita laranja.

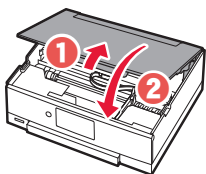
- Usar a impressora com a fita laranja ou material de embalagem ainda anexado pode causar problemas de funcionamento na impressora.

### 2 Abra a unidade de digitalização/tampa e remova a fita laranja.



### 3 Feche a unidade de digitalização/tampa.

- Abra totalmente a unidade de digitalização/tampa e feche-a em seguida.



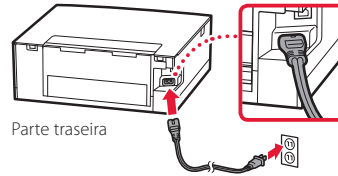
#### ▲ Cuidado

Preste atenção aos seus dedos.

## 3. Ligando a Impressora



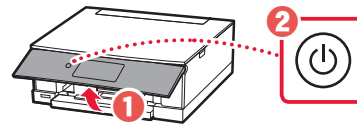
### 1 Conecte o cabo de alimentação.



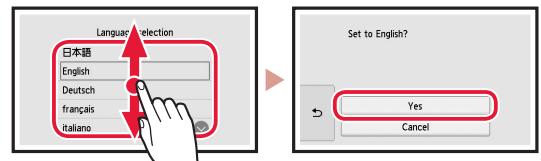
### Importante

Não conecte quaisquer outros cabos ainda.

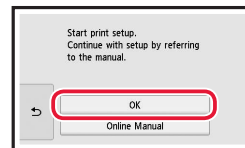
### 2 Abra o painel de controle e pressione o botão **ATIVADO (ON)**.



### 3 Role a tela e dê um toque para selecionar seu idioma. Em seguida, toque em **Sim (Yes)**.



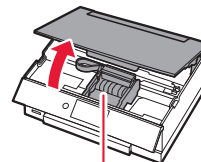
### 4 Toque em **OK**.



## 4. Instalando os cartuchos de tinta



### 1 Abra a unidade de digitalização/tampa.

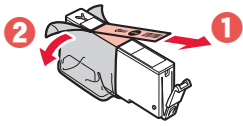


#### ▲ Cuidado

Não toque no suporte da cabeça de impressão antes de ele parar de se mover.

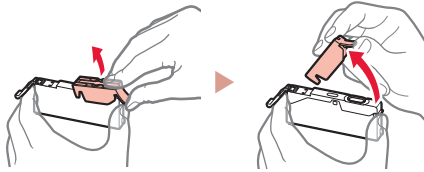
## Configurando a impressora

### 2 Remova a fita e o filme do cartucho de tinta.



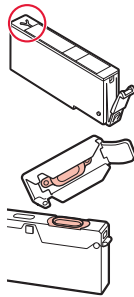
- Verifique se não foi deixada nenhuma fita.

### 3 Remova a tampa laranja lentamente.



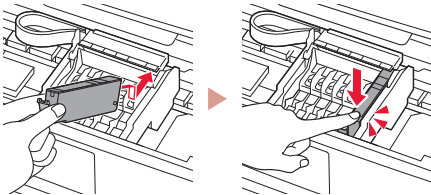
#### Importante

- Não aperte o cartucho de tinta se a saída de ar em forma de Y estiver bloqueada.
- Não toque nas áreas mostradas em vermelho.

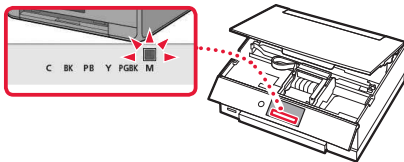


### 4 Instale o cartucho de tinta.

- Insira o cartucho de tinta na cabeça de impressão e pressione-o para baixo até ouvir um clique.



### 5 Confira se a cor do cartucho de tinta instalado aparece na tela.

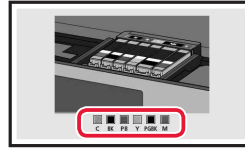


#### Importante

Se a cor não for exibida na tela mesmo que você tenha instalado o cartucho de tinta, a cor do cartucho de tinta pode estar errada ou você pode ter instalado um cartucho de tinta que não é suportado por esta impressora, como com um número do modelo diferente. Instale um cartucho de tinta com a cor correta ou use o cartucho de tinta fornecido para configuração.

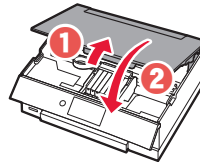
### 6 Repita as etapas 2 a 5 para instalar todos os cartuchos de tinta.

- Confira se todas as cores aparecem.



### 7 Feche a unidade de digitalização/tampa.

- A impressora será inicializada.



#### Cuidado

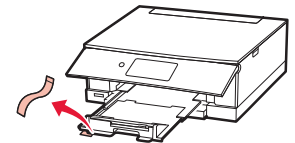
Preste atenção aos seus dedos.

## 5. Colocando papel

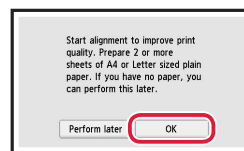


#### Verificar!

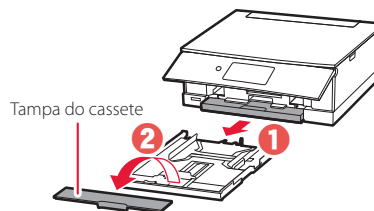
Remova qualquer fita laranja.



### 1 Toque em OK.

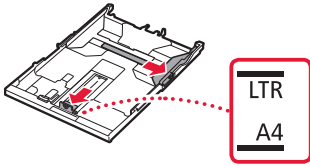


### 2 Remova o cassete da impressora e remova a tampa do cassete.



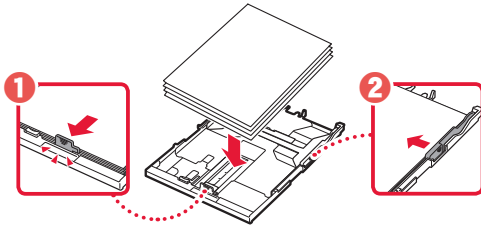
### 3 Deslize as guias do papel.

- Deslize a guia do papel direita até a borda direita. Alinhe a guia do papel frontal com a marcação Letter ou A4.

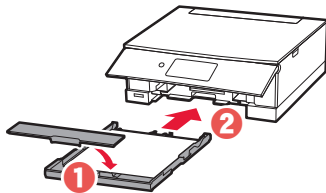


### 4 Coloque o papel.

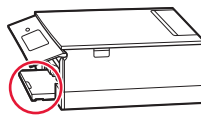
- Carregue 2 ou mais folhas de papel comum tamanho Letter ou A4 com o lado a ser impresso voltado para baixo.
- Coloque o papel na guia do papel frontal e alinhe a guia do papel direita com a largura do papel.



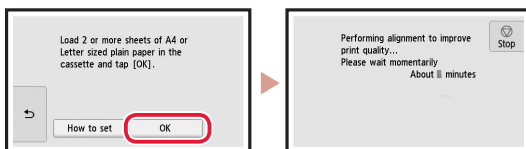
### 5 Coloque a tampa do cassete e substitua o cassete.



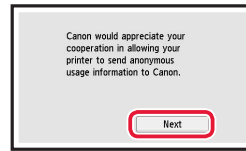
- Olhe pela lateral para confirmar se parece com o diagrama.



### 6 Toque em OK.

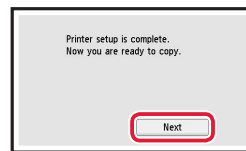


### 7 Toque em Avançar (Next).

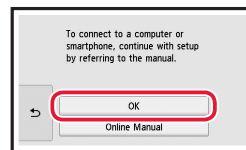


- Siga as instruções da tela para continuar com a configuração. Isso inclui fazer escolhas relacionadas ao envio de informações. Consulte "Enviando informações para a Canon" em **Informações Importantes e Sobre Segurança**.

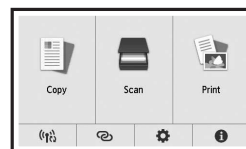
### 8 Toque em Avançar (Next).



### 9 Toque em OK.



### 10 Verifique se a tela a seguir aparece.



Se você for usar a impressora sem conectar nenhum outro dispositivo, a configuração está concluída.

### Qual dispositivo você está conectando?



Computador



Computador  
e smartphone



Smartphone

## 6-a

### Conectando a um Computador

Se você estiver usando vários computadores, execute estas etapas em cada computador.



- 1 Acesse o site Canon de um computador.

<https://ij.start.canon>



- 2 Selecione  **Configurar**.

- 3 Insira o nome do modelo da sua impressora e clique em **Ir**.

- 4 Clique em **Iniciar**.

- 5 Clique em **Se você já tiver preparado a sua impressora, vá para Conectar**.

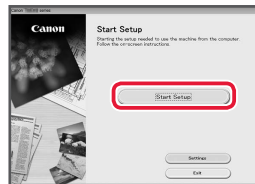
#### ▶▶▶ Nota

As seguintes etapas são para Windows (exceto Windows 10 in S mode) e usuários do macOS. Para outros sistemas operacionais, continue a configuração seguindo as instruções na tela.

- 6 Clique em **Download**.

- 7 Execute o arquivo baixado.

- 8 Clique em **Iniciar configuração (Start Setup)**.



- 9 Siga as instruções na tela.

- Estas operações podem levar algum tempo.
- Para conectar a um smartphone, consulte "6-b. Conectando a um smartphone" na página 5.

#### Usando o CD-ROM de instalação para Windows

Clique duas vezes em **EasySetup.exe** no CD-ROM e, em seguida, continue da etapa 3. Se você não tiver uma conexão com a internet, abra a pasta **win** no CD-ROM e clique duas vezes em **SETUP.exe**. Isso instalará o driver da impressora.

## 6-b

### Conectando a um smartphone

Se você estiver usando vários smartphones, execute estas etapas em cada smartphone.



#### Prepare o seguinte antes de iniciar.

- 1 Ative a configuração Wi-Fi no seu smartphone.
- 2 Conecte seu smartphone ao roteador sem fio (se você tiver um roteador sem fio).  
Consulte os manuais do seu smartphone e do seu roteador sem fio para obter mais detalhes.

#### 1 Instale o aplicativo "Canon PRINT Inkjet/SELPHY" no seu smartphone.

- Digitalize o código QR exibido à direita para acessar o site da Canon e fazer download do aplicativo.



#### 2 Abra o aplicativo instalado.

#### 3 Siga as instruções na tela do aplicativo para adicionar sua impressora.

---

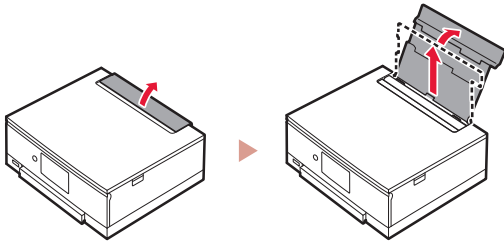
Depois que você adicionar a impressora, poderá imprimir a partir do smartphone.  
Para imprimir fotos, consulte "Colocando Papel Fotográfico" na página 6.

---

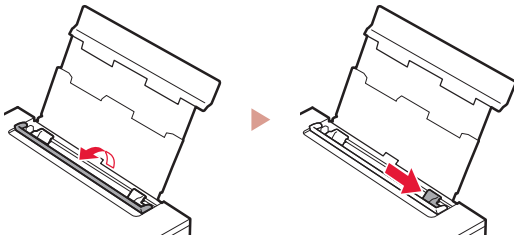
## Colocando Papel Fotográfico

Papel fotográfico só pode ser carregado na bandeja traseira.

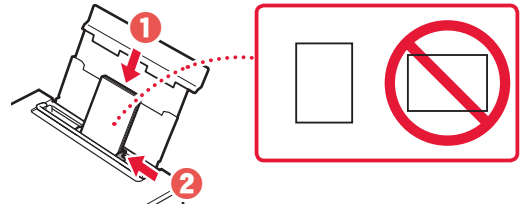
- 1 Abra a tampa da bandeja traseira e estenda o suporte de papel.



- 2 Abra a tampa do slot de alimentação e deslize a guia do papel do lado direito para a extrema direita.

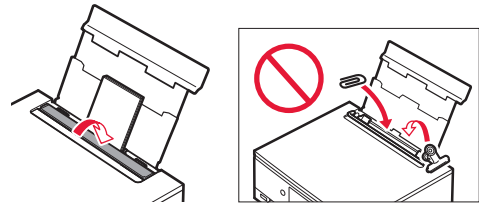


- 3 Carregue várias folhas de papel fotográfico com o lado a ser impresso virado para cima e deslize a guia do papel em direção à borda da pilha de papel.



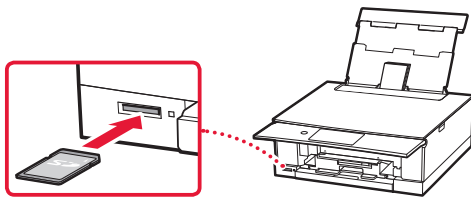
- 4 Feche a tampa do slot de alimentação.

- Siga as instruções na tela para definir informações sobre o papel carregado.



## Imprimindo as Fotos Salvas em um Cartão de Memória

- 1 Ligue a Impressora.
- 2 Carregue várias folhas de papel fotográfico.
- 3 Insira o cartão de memória no slot de cartão.



- 4 Deslize para a direita e para a esquerda pelas fotos e selecione uma.

- 5 Toque no botão **Colorido (Color)** para iniciar a impressão.

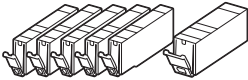
# Instalación de la impresora

Configuración en línea  
<https://ij.start.canon>



## 1. Contenido de la caja

- Depósitos de tinta para configuración
- Cable de alimentación
- CD-ROM de instalación para Windows
- Información de seguridad e información importante
- Guía de inicio (este manual)



## 2. Retirar los materiales de protección



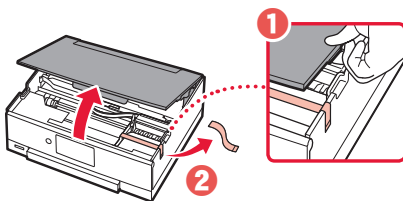
### Importante

Cuando comienza la impresión, se abre el panel de control y se extrae la bandeja de salida del papel automáticamente. No coloque nada delante de la impresora.

### 1 Retire y tire los materiales de protección y la cinta naranja.

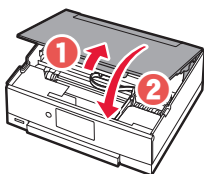
- El uso de la impresora con la cinta naranja o material de protección todavía adherido podría provocar un mal funcionamiento de la impresora.

### 2 Abra la cubierta/unidad de escaneado y elimine la cinta naranja.



### 3 Cierre la cubierta/unidad de escaneado.

- Abra la cubierta/unidad de escaneado completamente y luego ciérrela.

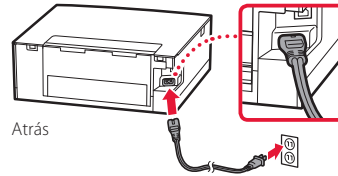


▲ Precaución  
Tenga cuidado con los dedos.

## 3. Encender la impresora



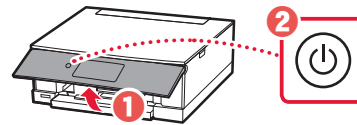
### 1 Conecte el cable de alimentación.



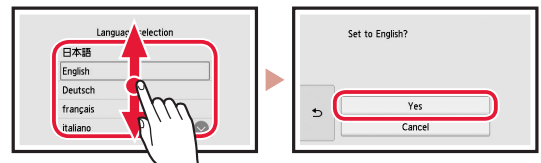
### Importante

En este momento, no conecte ningún otro cable.

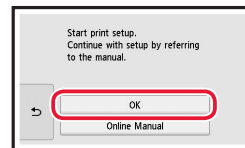
### 2 Abra el panel de control y pulse el botón **ACTIVADO (ON)**.



### 3 Desplácese y púntee para seleccionar su idioma y luego púntee **Sí (Yes)**.



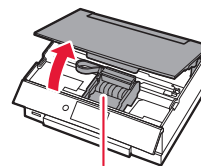
### 4 Púntee **OK**.



## 4. Instalación de los depósitos de tinta



### 1 Abra la cubierta/unidad de escaneado.

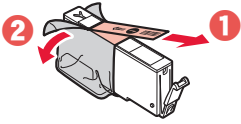


### Precaución

No toque el soporte del cabezal de impresión hasta que deje de moverse.

## Instalación de la impresora

- 2 Retire la cinta y la película del depósito de tinta.



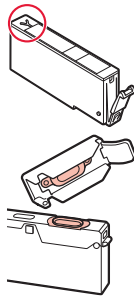
- Compruebe que la cinta se ha eliminado completamente.

- 3 Retire la tapa naranja despacio.



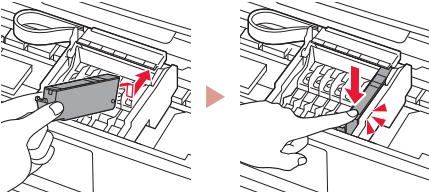
### Importante

- No apriete el depósito de tinta si el orificio de aire en forma de Y está bloqueado.
- No toque las áreas rojas que se muestran en rojo.

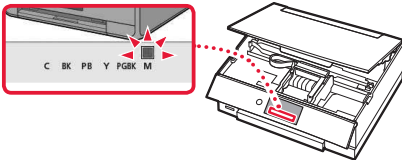


- 4 Instale el depósito de tinta.

- Inserte el depósito de tinta en el cabezal de impresión y empújelo hacia abajo hasta que encaje en su sitio.



- 5 Compruebe si el color del depósito de tinta que instaló aparece en pantalla.

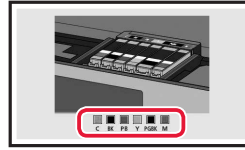


### Importante

Si no se muestra el color en pantalla a pesar de haber instalado el depósito de tinta, es posible que el color del depósito de tinta no sea correcto o que haya instalado un depósito de tinta, por ejemplo con un número de modelo distinto que no sea compatible con esta impresora. Instale un depósito de tinta para el color correcto o utilice el depósito de tinta proporcionado para la configuración.

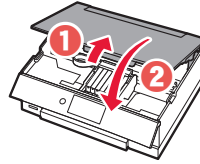
- 6 Repita los pasos 2 a 5 para instalar todos los otros depósitos de tinta.

- Compruebe que aparezcan todos los colores.



- 7 Cierre la cubierta/unidad de escaneado.

- La impresora comenzará a iniciarse.



### Precaución

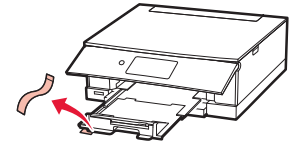
Tenga cuidado con los dedos.

## 5. Carga del papel

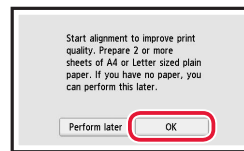


### Comprobar!

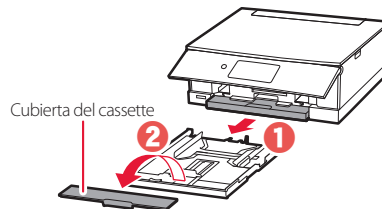
Retire cualquier cinta naranja.



- 1 Puntee **OK**.



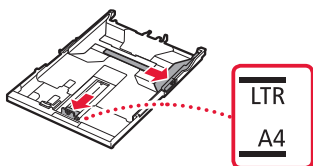
- 2 Retire el cassette de la impresora y retire la cubierta del cassette.





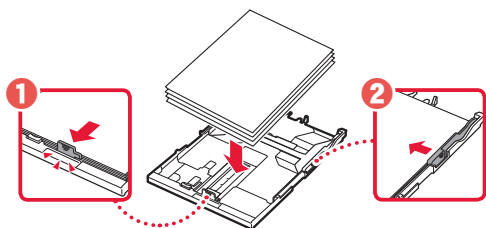
### 3 Separe las guías del papel deslizándolas.

- Deslice la guía del papel derecha hacia el borde derecho. Alinee la guía del papel frontal con la marca Carta o A4.

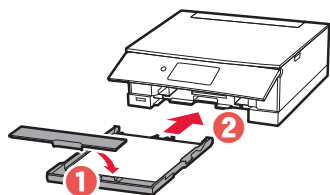


### 4 Cargue el papel.

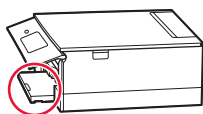
- Cargue 2 o más hojas de papel normal de tamaño Carta o A4 con el lado de impresión hacia abajo.
- Coloque el papel delante de la guía del papel frontal y alinee la guía del papel derecha con el ancho del papel.



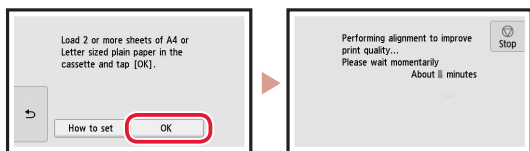
### 5 Coloque la cubierta del cassette e inserte el cassette.



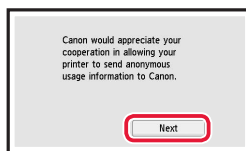
- Mírelo desde el lado para confirmar que está como en el diagrama.



### 6 Puntee **OK**.

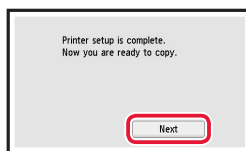


### 7 Puntee **Siguiente (Next)**.

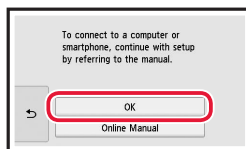


- Siga las instrucciones que aparecen en pantalla para continuar con la instalación. Esto incluye la realización de selecciones relacionadas con el envío de información. Consulte "Enviando información a Canon" en **Información de seguridad e información importante**.

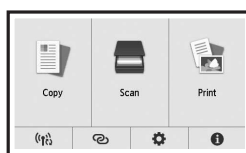
### 8 Puntee **Siguiente (Next)**.



### 9 Puntee **OK**.



### 10 Compruebe que aparezca la siguiente pantalla.



Si va a utilizar la impresora sin conectar con ningún otro dispositivo, la configuración ya se ha completado.

## ¿Qué dispositivo va a conectar?



Ordenador



Ordenador y  
teléfono inteligente



Teléfono inteligente

### 6-a

## Conectar al ordenador

Si utiliza varios ordenadores, realice estos pasos en cada ordenador.



- 1 Acceda al sitio web de Canon desde un ordenador.

<https://ij.start.canon>



- 2 Seleccione  **Configurar**.

- 3 Escriba el nombre del modelo de su impresora y haga clic en **Ir**.

- 4 Haga clic en **Iniciar**.

- 5 Haga clic en **Si ya ha preparado la impresora, vaya a Conectar**.

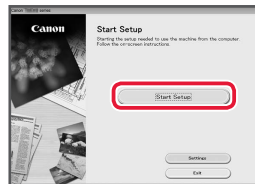
#### »»» Nota

Los siguientes pasos son para usuarios de Windows (excepto Windows 10 in S mode) y macOS. Para otros sistemas operativos, continúe con la configuración siguiendo las instrucciones en pantalla.

- 6 Haga clic en **Descargar**.

- 7 Ejecute el archivo descargado.

- 8 Haga clic en **Iniciar configuración (Start Setup)**.



- 9 Siga las instrucciones que aparezcan en pantalla.

- Estas operaciones pueden llevar algún tiempo.
- Para conectar con un teléfono inteligente también, consulte "6-b. Conexión con un teléfono inteligente" en la página 5.

#### Uso del CD-ROM de instalación para Windows

Haga doble clic en **EasySetup.exe** en el CD-ROM y, a continuación, continúe desde el paso 3. Si no tiene una conexión a Internet, abra la carpeta **win** en el CD-ROM y haga doble clic en **SETUP.exe**. Esto instalará el controlador de la impresora.

## 6-b

### Conexión con un teléfono inteligente

Si utiliza varios teléfonos inteligentes, realice estos pasos en cada teléfono inteligente.



Prepare lo siguiente antes de empezar.

- 1 Active la configuración de Wi-Fi en su teléfono inteligente.
- 2 Conecte su teléfono inteligente al router inalámbrico (si tiene un router inalámbrico).

Consulte los manuales de su teléfono inteligente y del router inalámbrico para obtener más detalles.

#### 1 Instale la aplicación "Canon PRINT Inkjet/SELPHY" en su teléfono inteligente.

- Escanee el código QR que se muestra a la derecha para acceder al sitio web de Canon y, a continuación, descargue la aplicación.



#### 2 Abra la aplicación instalada.

#### 3 Siga las instrucciones en pantalla de la aplicación para agregar su impresora.

---

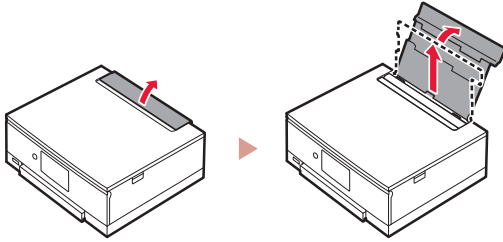
Cuando haya agregado la impresora, podrá imprimir desde su teléfono inteligente.  
Para imprimir fotos, consulte "Carga de papel fotográfico" en la página 6.

---

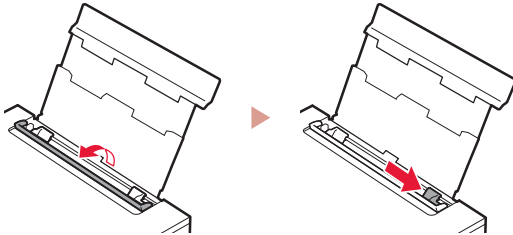
## Carga de papel fotográfico

El papel fotográfico solo se puede cargar en la bandeja posterior.

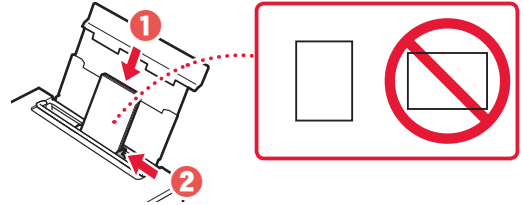
- 1 Abra la cubierta de la bandeja posterior y extienda el soporte del papel.



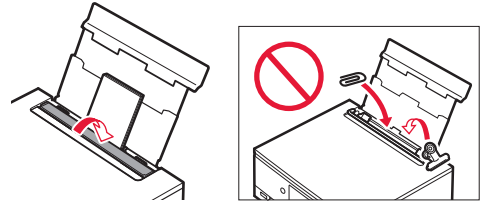
- 2 Abra la cubierta de la ranura de alimentación y deslice la guía del papel del lado derecho totalmente hacia la derecha.



- 3 Cargue varias hojas de papel fotográfico con la cara de impresión hacia arriba y deslice la guía del papel lateral contra el borde de las hojas de papel.

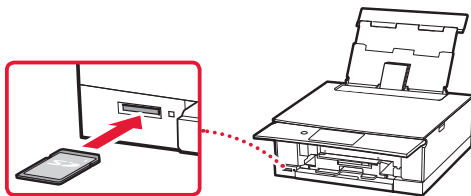


- 4 Cierre la cubierta de la ranura de alimentación.
  - Siga las instrucciones en pantalla para definir la información para el papel cargado.



## Impresión de fotos guardadas en una tarjeta de memoria

- 1 Encienda la impresora.
- 2 Cargue varias páginas de papel fotográfico.
- 3 Inserte la tarjeta de memoria en la ranura para tarjetas.



- 4 Desplácese hacia la derecha y hacia la izquierda por las fotos y seleccione una.
- 5 Puntee el botón **Color** para iniciar la impresión.

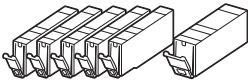
# Ρύθμιση του εκτυπωτή

Ρύθμιση online  
<https://ij.start.canon>



## 1. Περιεχόμενα συσκευασίας

- Δοχεία μελάνης για εγκατάσταση
- Καλώδιο τροφοδοσίας
- CD-ROM εγκατάστασης για Windows
- Πληροφορίες για την ασφάλεια και σημαντικές πληροφορίες
- Ξεκινώντας (αυτό το εγχειρίδιο)



## 2. Αφαίρεση υλικών συσκευασίας



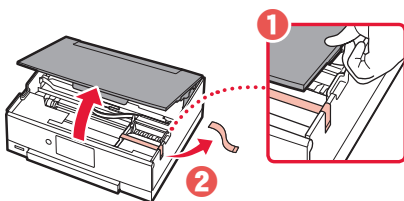
### ▶▶▶ Σημαντικό

Όταν αρχίζει η εκτύπωση, ο πίνακας λειτουργίας ανοίγει και η θήκη εξόδου χαρτιού εκτείνεται προς τα έξω αυτόματα. Μην τοποθετείτε αντικείμενα μπροστά από τον εκτυπωτή.

### 1 Αφαιρέστε και απορρίψτε τυχόν υλικά συσκευασίας και πορτοκαλί ταινία.

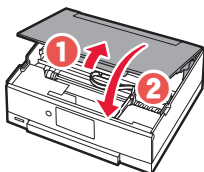
- Η χρήση του εκτυπωτή χωρίς να αφαιρεθεί η πορτοκαλί ταινία ή το υλικό συσκευασίας ενδέχεται να προκαλέσει δυσλειτουργία του εκτυπωτή.

### 2 Ανοίξτε τη μονάδα σάρωσης / κάλυμμα και αφαιρέστε την πορτοκαλί ταινία.



### 3 Κλείστε τη μονάδα σάρωσης / κάλυμμα.

- Ανοίξτε πλήρως τη μονάδα σάρωσης / κάλυμμα και, έπειτα, κλείστε τη.

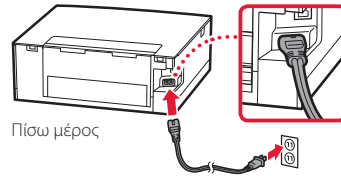


▲ Προσοχή  
Προσεχьте τα δάχτυλά σας.

## 3. Ενεργοποίηση του εκτυπωτή



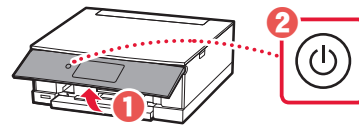
### 1 Συνδέστε το καλώδιο τροφοδοσίας.



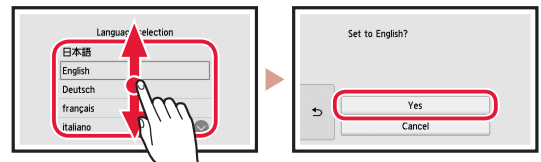
### ▶▶▶ Σημαντικό

Προς το παρόν, μη συνδέσετε άλλα καλώδια.

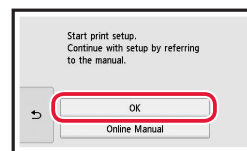
### 2 Ανοίξτε τον πίνακα λειτουργίας και πατήστε το κουμπί ON.



### 3 Μετακινηθείτε με κύλιση και πατήστε ελαφρά για να επιλέξετε τη γλώσσα και, στη συνέχεια, πατήστε ελαφρά το κουμπί **Ναι (Yes)**.



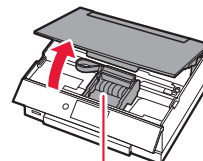
### 4 Πατήστε **OK**.



## 4. Εγκατάσταση των δοχείων μελάνης



### 1 Ανοίξτε τη μονάδα σάρωσης / κάλυμμα.

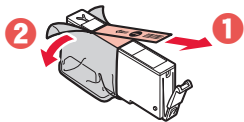


### ▲ Προσοχή

Μην αγγίζετε τη θήκη κεφαλής εκτύπωσης μέχρι να σταματήσει να μετακινείται.

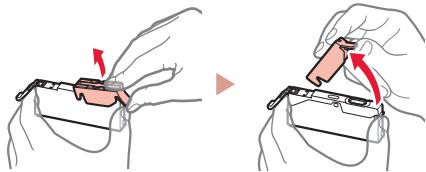
## Ρύθμιση του εκτυπωτή

- 2 Αφαιρέστε την ταινία και τη μεμβράνη από το δοχείο μελάνης.



- Ελέγξτε ότι δεν έχει παραμείνει ταινία.

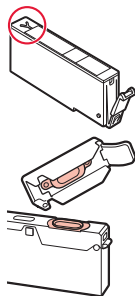
- 3 Αφαιρέστε αργά το πορτοκαλί κάλυμμα.



### »»» Σημαντικό

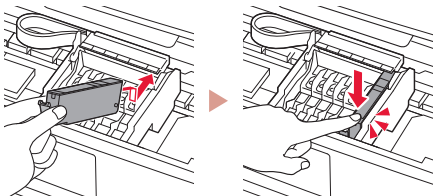
- Μην πιέζετε το δοχείο μελάνης όταν υπάρχει εμπλοκή στην οπή αέρα σχήματος Υ.

- Μην αγγίζετε τις περιοχές που απεικονίζονται με κόκκινο χρώμα.

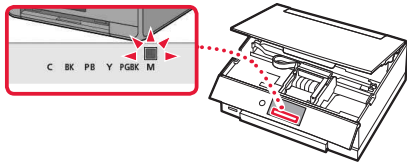


- 4 Εγκαταστήστε το δοχείο μελάνης.

- Τοποθετήστε το δοχείο μελάνης στην κεφαλή εκτύπωσης και πιέστε το προς τα κάτω μέχρι να εφαρμόσει.



- 5 Ελέγξτε ότι το χρώμα του δοχείου μελάνης που εγκαταστήσατε εμφανίζεται στην οθόνη.

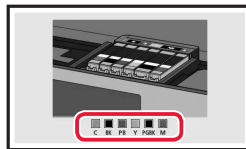


### »»» Σημαντικό

Εάν το χρώμα δεν εμφανίζεται στην οθόνη παρόλο που έχετε εγκαταστήσει το δοχείο μελάνης, το χρώμα του δοχείου μελάνης μπορεί να μην είναι σωστό ή μπορεί να έχετε εγκαταστήσει ένα δοχείο μελάνης με διαφορετικό αριθμό μοντέλου, που δεν υποστηρίζεται από αυτό τον εκτυπωτή. Εγκαταστήστε ένα δοχείο μελάνης για το σωστό χρώμα ή χρησιμοποιήστε το δοχείο μελάνης που παρέχεται για την εγκατάσταση.

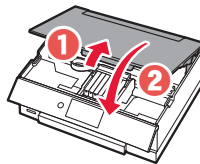
- 6 Επαναλάβετε τα βήματα 2 έως 5 για να τοποθετήσετε όλα τα δοχεία μελάνης.

- Ελέγξτε ότι εμφανίζονται όλα τα χρώματα.



- 7 Κλείστε τη μονάδα σάρωσης / κάλυμμα.

- Ο εκτυπωτής αρχίζει να προετοιμάζεται.



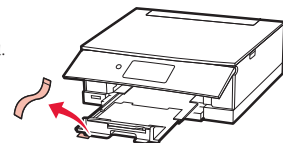
- ⚠ Προσοχή  
Προσέχετε τα δάχτυλά σας.

## 5. Τοποθέτηση χαρτιού

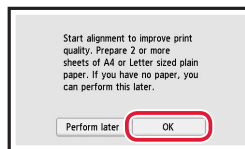


### Ελέγξτε!

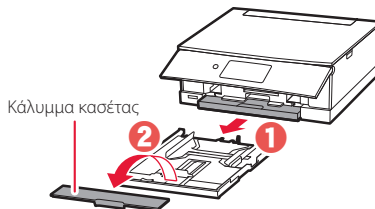
Αφαιρέστε τυχόν πορτοκαλί ταινία.



- 1 Πατήστε **OK**.

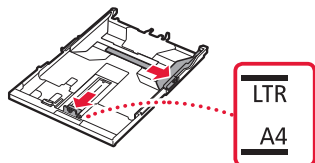


- 2 Αφαιρέστε την κασέτα από τον εκτυπωτή καθώς και το κάλυμμα της κασέτας.



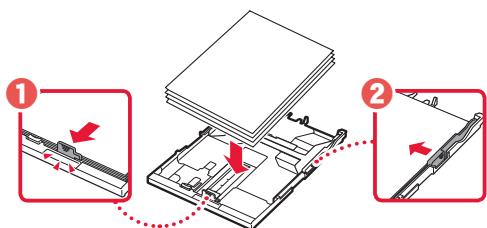
### 3 Σύρτετε τους οδηγούς χαρτιού ώστε να τους διαχωρίσετε.

- Σύρτετε το δεξιό οδηγό χαρτιού στο δεξιό άκρο. Ευθυγραμμίστε τον μπροστινό οδηγό χαρτιού με την ένδειξη Letter ή A4.

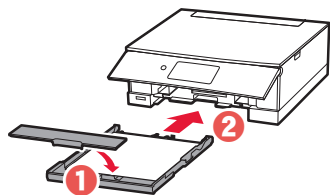


### 4 Τοποθετήστε χαρτί.

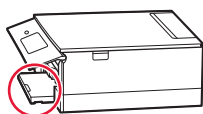
- Τοποθετήστε 2 ή περισσότερες σελίδες απλού χαρτιού μεγέθους Letter ή A4, με την πλευρά εκτύπωσης στραμμένη προς τα κάτω.
- Τοποθετήστε το χαρτί στον μπροστινό οδηγό χαρτιού και ευθυγραμμίστε τον δεξιό οδηγό χαρτιού με το πλάτος του χαρτιού.



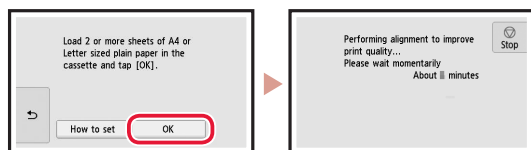
### 5 Τοποθετήστε ξανά το κάλυμμα της κασέτας καθώς και την κασέτα.



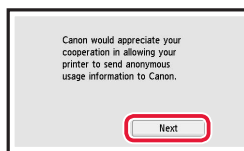
- Κοιτάξτε την από το πλάι για να επιβεβαιώσετε ότι είναι όπως στο διάγραμμα.



### 6 Πατήστε **OK**.

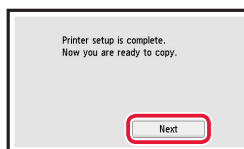


### 7 Πατήστε **Επόμενο (Next)**.

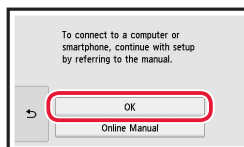


- Ακολουθήστε τις οδηγίες στην οθόνη για να συνεχίσετε την εγκατάσταση. Σε αυτές περιλαμβάνονται επιλογές που σχετίζονται με την αποστολή πληροφοριών. Ανατρέξτε στο κεφάλαιο «Αποστολή πληροφοριών στην Canon» στην ενότητα **Πληροφορίες για τη ασφάλεια και σημαντικές πληροφορίες**.

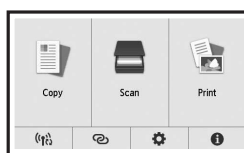
### 8 Πατήστε **Επόμενο (Next)**.



### 9 Πατήστε **OK**.



### 10 Βεβαιωθείτε ότι εμφανίζεται η ακόλουθη οθόνη.



Αν πρόκειται να χρησιμοποιήσετε τον εκτυπωτή χωρίς να συνδέσετε άλλες συσκευές, τότε η ρύθμιση έχει ολοκληρωθεί.

### Τι συσκευή σκοπεύετε να συνδέσετε;



Υπολογιστής



Υπολογιστής και  
smartphone



Smartphone

## 6-a

### Σύνδεση με υπολογιστή

Εάν χρησιμοποιείτε πολλούς υπολογιστές, εκτελέστε αυτά τα βήματα σε κάθε υπολογιστή.



- 1 Μεταβείτε στη διαδικτυακή τοποθεσία της Canon από έναν υπολογιστή.

<https://ij.start.canon>



- 2 Επιλέξτε  **Εγκατάσταση**.

- 3 Καταχωρίστε το όνομα μοντέλου του εκτυπωτή σας και κάντε κλικ στην επιλογή **Μετάβαση**.

- 4 Κάντε κλικ στο **Έναρξη**.

- 5 Κάντε κλικ στο **Αν έχετε ήδη προετοιμάσει τον εκτυπωτή σας, μεταβείτε στη Σύνδεση**.

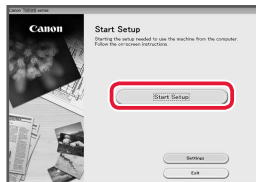
#### »»» Σημείωση

Τα παρακάτω βήματα αφορούν τους χρήστες Windows (εκτός από Windows 10 in S mode) και macOS. Στην περίπτωση άλλου λειτουργικού συστήματος, συνεχίστε τη ρύθμιση ακολουθώντας τις οδηγίες που εμφανίζονται στην οθόνη.

- 6 Κάντε κλικ στο **Λήψη**.

- 7 Εκτελέστε το ληφθέν αρχείο.

- 8 Κάντε κλικ στο **Εκκίνηση ρύθμισης (Start Setup)**.



- 9 Ακολουθήστε τις οδηγίες στην οθόνη.

- Αυτές οι λειτουργίες ενδέχεται να χρειαστούν κάποιο χρόνο.
- Για να συνδέσετε και σε smartphone, ανατρέξτε στην ενότητα «6-b. Σύνδεση με Smartphone» στη σελίδα 5.

#### Χρήση του CD-ROM εγκατάστασης για Windows

Κάντε διπλό κλικ στο αρχείο **EasySetup.exe** που υπάρχει στο CD-ROM και, έπειτα, συνεχίστε από το βήμα 3. Αν δεν έχετε σύνδεση internet, ανοίξτε το φάκελο **win** στο CD-ROM και κάντε διπλό κλικ στο αρχείο **SETUP.exe**. Αυτή η ενέργεια θα εγκαταστήσει το πρόγραμμα οδήγησης του εκτυπωτή.



## 6-b

## Σύνδεση με Smartphone

Εάν χρησιμοποιείτε πολλά smartphone, εκτελέστε αυτά τα βήματα σε κάθε smartphone.

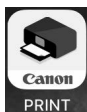


**Προετοιμάστε τα εξής προτού ξεκινήσετε.**

- 1 Ενεργοποιήστε τη ρύθμιση Wi-Fi στο smartphone σας.
  - 2 Συνδέστε το smartphone σας στον ασύρματο δρομολογητή (εάν έχετε ασύρματο δρομολογητή).
- Για περισσότερες λεπτομέρειες, ανατρέξτε στα εγχειρίδια του smartphone και του ασύρματου δρομολογητή.

**1** Εγκαταστήστε την εφαρμογή «Canon PRINT Inkjet/SELPHY» στο smartphone σας.

- Για πρόσβαση στην τοποθεσία web της Canon, σαρώστε τον κωδικό QR που εμφανίζεται στα δεξιά και, έπειτα, πραγματοποιήστε λήψη της εφαρμογής.

**2** Ανοίξτε την εγκατεστημένη εφαρμογή.**3** Ακολουθήστε τις οδηγίες που εμφανίζονται στην οθόνη της εφαρμογής για να προσθέσετε τον εκτυπωτή σας.

---

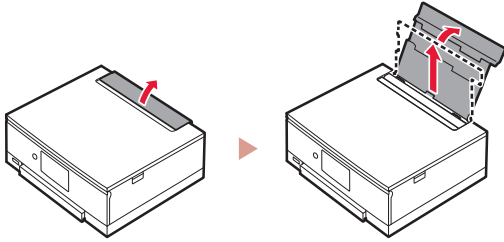
Αφού προσθέσετε τον εκτυπωτή σας, θα μπορείτε να εκτυπώνετε από το smartphone σας. Για να εκτυπώσετε φωτογραφίες, ανατρέξτε στην ενότητα «Τοποθέτηση φωτογραφικού χαρτιού» στη σελίδα 6.

---

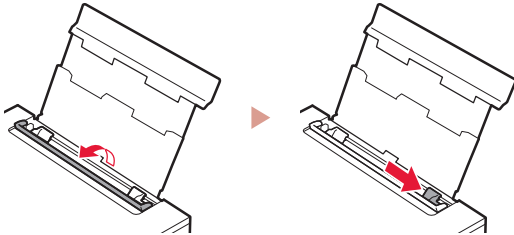
## Τοποθέτηση φωτογραφικού χαρτιού

Το φωτογραφικό χαρτί μπορεί να τοποθετηθεί μόνο στην πίσω θήκη.

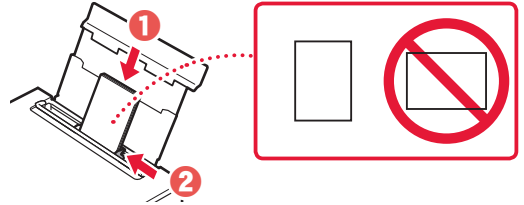
- 1 Ανοίξτε το κάλυμμα πίσω θήκης και εκτείnete την υποστήριξη χαρτιού.



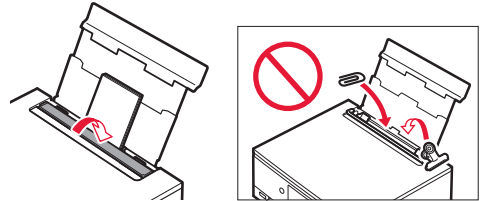
- 2 Ανοίξτε το κάλυμμα υποδοχής τροφοδοσίας και σύρετε το δεξιό οδηγό χαρτιού προς τα δεξιά έως το τέρμα.



- 3 Τοποθετήστε πολλά φύλλα φωτογραφικού χαρτιού με την πλευρά εκτύπωσης στραμμένη προς τα πάνω και σύρετε τον πλαϊνό οδηγό χαρτιού στην άκρη της στοίβας χαρτιών.

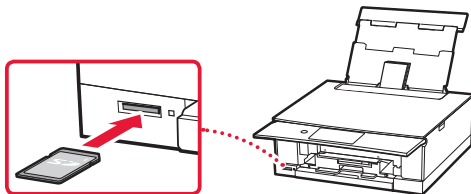


- 4 Κλείστε το κάλυμμα υποδοχής τροφοδοσίας.
  - Ακολουθήστε τις οδηγίες στην οθόνη για να ορίσετε πληροφορίες για το τοποθετημένο χαρτί.



## Εκτύπωση φωτογραφιών που έχουν αποθηκευτεί σε κάρτα μνήμης

- 1 Ενεργοποιήστε τον εκτυπωτή.
- 2 Τοποθετήστε πολλά φύλλα φωτογραφικού χαρτιού.
- 3 Τοποθετήστε την κάρτα μνήμης στην υποδοχή κάρτας.



- 4 Κινηθείτε δεξιά και αριστερά στις φωτογραφίες και επιλέξτε μία.
- 5 Πατήστε ελαφρά το κουμπί **Χρώμα (Color)** για να εκκινήσετε την εκτύπωση.

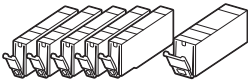
# Ställa in skrivaren

**Onlineinstallation**  
<https://ij.start.canon>



## 1. Boxens innehåll

- Bläckbehållare för installation
- Strömkabel
- Installations-CD för Windows
- Information om säkerhet och annan viktig information
- Uppstartsguide (denna handbok)



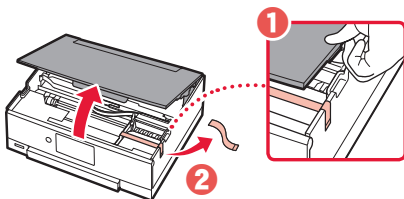
## 2. Ta bort förpackningsmaterial



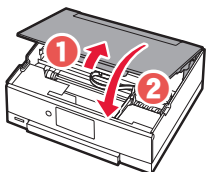
### »»» Viktigt!

När utskriften startas öppnas manöverpanelen och utmatningsfacket skjuts ut automatiskt. Placera ingenting framför skrivaren.

- 1 Ta bort och kassera eventuellt förpackningsmaterial och orange tejp.
  - Om du använder skrivaren med orange tejp eller förpackningsmaterial kvar kan det leda till att skrivaren slutar fungera.
- 2 Öppna skannerenheten/luckan och ta bort den orange tejp.



- 3 Stäng skannerenheten/luckan.
  - Öppna skannerenheten/luckan helt och stäng den sedan.

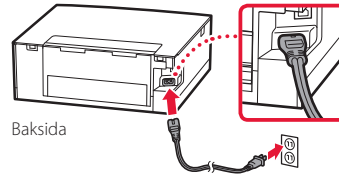


▲ **Försiktighet**  
Akta fingrarna.

## 3. Slå på skrivaren



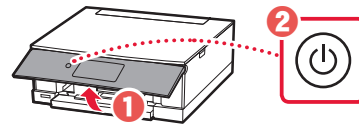
- 1 Anslut strömkabeln.



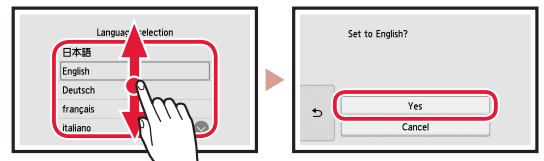
### »»» Viktigt!

Anslut inga andra kablar än strömkabeln ännu.

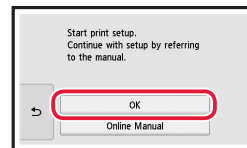
- 2 Öppna manöverpanelen och tryck på knappen **PÅ (ON)**.



- 3 Rulla och tryck för att välja ditt språk, och tryck sedan på **Ja (Yes)**.



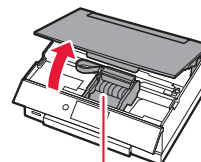
- 4 Tryck på **OK**.



## 4. Installera bläckbehållarna



- 1 Öppna skannerenheten/luckan.

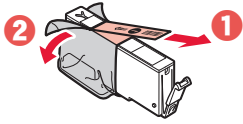


### ▲ **Försiktighet**

Rör inte hållaren för skrivhuvudet förrän den slutar röra sig.

## Ställa in skrivaren

- 2 Ta bort tejen och filmen på bläckbehållaren.



- Kontrollera att ingen tejp sitter kvar.

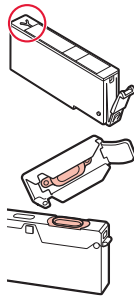
- 3 Ta långsamt bort det orange locket.



### »»» Viktigt!

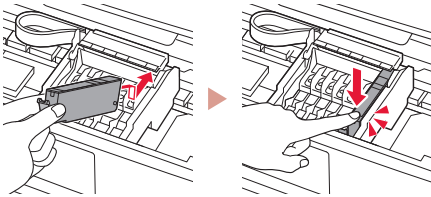
- Kläm inte åt bläckbehållaren när det Y-formade lufthålet är blockerat.

- Rör inte de områden som visas i rött.

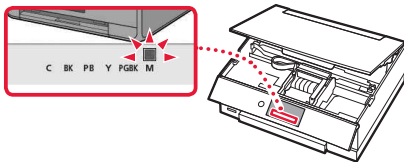


- 4 Installera bläckbehållaren.

- Sätt i bläckbehållaren i skrivhuvudet och tryck nedåt tills den klickar.



- 5 Kontrollera att färgen på bläckbehållaren du har installerat visas på skärmen.

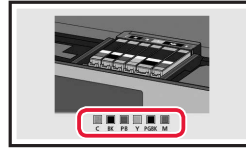


### »»» Viktigt!

Om färgen inte visas på skärmen sedan du installerat bläckbehållaren kanske bläckbehållarens färg är fel eller så kan du ha installerat en bläckbehållare med ett annat modellnummer som inte stöds av skrivaren. Antingen installerar du en bläckbehållare med rätt färg eller så använder du den tillhandahållna bläckbehållaren för konfigurationen.

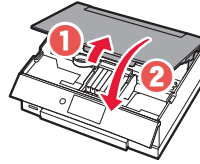
- 6 Upprepa steg 2 till 5 för att installera alla bläckbehållare.

- Kontrollera att alla färger visas.



- 7 Stäng skannerenheten/luckan.

- Skrivaren börjar initialiseras.



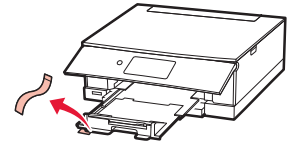
- ▲ **Försiktighet**  
Akta fingrarna.

## 5. Fylla på papper

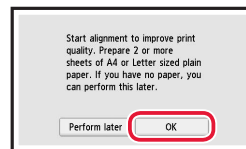


### Kontrollera!

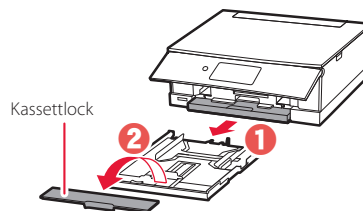
Ta bort all orange tejp.



- 1 Tryck på **OK**.

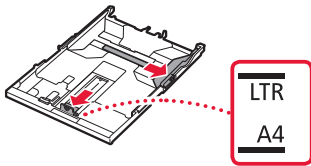


- 2 Dra ut kassetten ur skrivaren och ta bort kassetlocket.



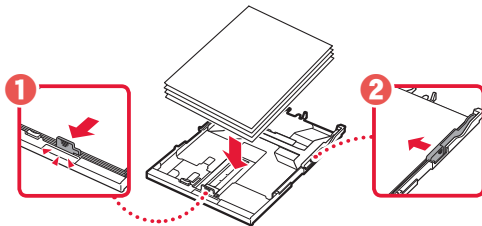
### 3 Skjut isär pappersledarna.

- Skjut den högra pappersledaren ut mot högerkanten. Justera den främre pappersledaren mot Letter- eller A4-märket.

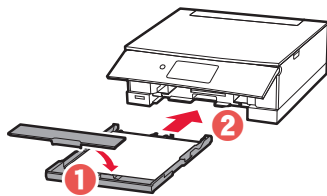


### 4 Fyll på papper.

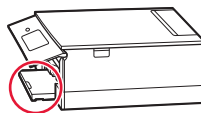
- Lägg i 2 eller fler blad med vanligt Letter- eller A4-papper med utskriftssidan vänd nedåt.
- Lägg papperet mot den främre pappersledaren och justera den högra pappersledaren efter papperets bredd.



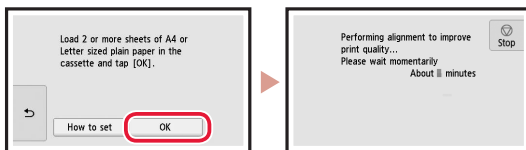
### 5 Sätt dit kassetlocket och sätt tillbaka kassetten.



- Kontrollera från sidan att det ser ut som diagrammet.



### 6 Tryck på OK.

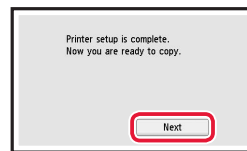


### 7 Tryck på Nästa (Next).

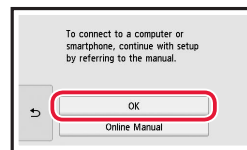


- Följ instruktionerna på skärmen för att fortsätta inställningen. Detta omfattar att göra val i samband med överföring av information. Läs "Skicka information till Canon" i **Information om säkerhet och annan viktig information**.

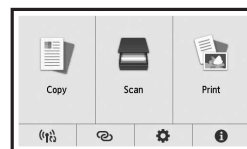
### 8 Tryck på Nästa (Next).



### 9 Tryck på OK.



### 10 Kontrollera att följande skärm visas.



Inställningen är nu klar om du ska använda skrivaren utan att ansluta några andra enheter.

## Vilken enhet ansluter du?



Dator



Dator och  
smarttelefon



Smarttelefon



## 6-a

### Ansluta till dator

Om du använder flera datorer utför du dessa steg på varje dator.



- 1 Gå till Canons webbplats på en dator.

<https://ij.start.canon>



- 2 Välj  **Konfigurera**.

- 3 Mata in skrivarens modellnamn och klicka på **Kör**.

- 4 Klicka på **Starta**.

- 5 Klicka på **Om du redan har förberett skrivaren går du till Anslut**.

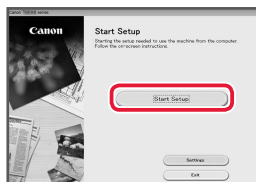
#### ►►► Obs!

Följande steg gäller för användare med Windows (utom Windows 10 in S mode) eller macOS. För andra operativsystem fortsätter du följa anvisningarna på skärmen istället.

- 6 Klicka på **Hämta**.

- 7 Starta den hämtade filen.

- 8 Klicka på **Starta inställningar (Start Setup)**.



- 9 Följ instruktionerna på skärmen.

- Dessa åtgärder kan ta en stund.
- Om du också vill ansluta till en smarttelefon, läs "6-b. Ansluta till en smarttelefon" på sida 5.

#### Använda installations-CD:n för Windows

Dubbelklicka på **EasySetup.exe** på CD:n och fortsätt sedan från steg 3. Om du inte har en internetanslutning öppnar du mappen **win** på CD:n och dubbelklickar på **SETUP.exe**. Då installeras skrivardrivrutinen.

## 6-b

### Ansluta till en smarttelefon

Om du använder flera smarttelefoner utför du dessa steg på varje smarttelefon.



#### Förbered följande innan du börjar.

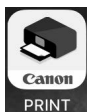
- 1 Aktivera inställningen Wi-Fi på smarttelefonen.
  - 2 Anslut smarttelefonen till den trådlösa routern (om du har en trådlös router).
- Läs smarttelefonens och den trådlösa routerns handböcker för mer detaljer.

#### 1 Installera appen "Canon PRINT Inkjet/SELPHY" på smarttelefonen.

- Skanna QR-koden till höger för att komma till Canons webbplats och hämta sedan appen.



#### 2 Öppna den installerade appen.



#### 3 Följ instruktionerna på skärmen i appen för att lägga till skrivaren.

---

När du har lagt till skrivaren kan du skriva ut från din smarttelefon.

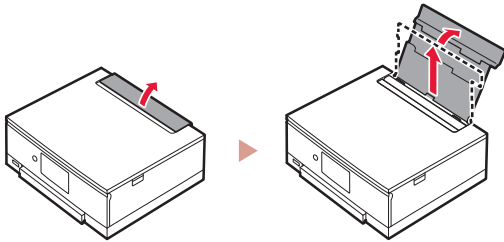
Om du vill skriva ut foton, läs "Fylla på fotopapper" på sida 6.

---

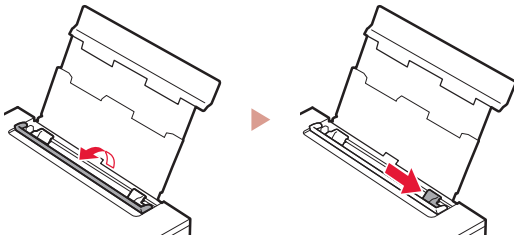
## Fylla på fotopapper

Fotopapper kan endast fyllas på i det bakre facket.

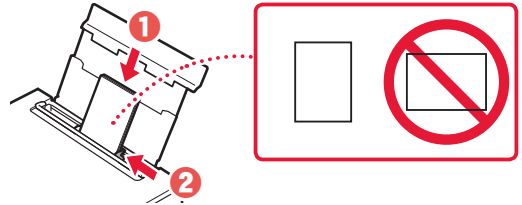
- 1 Öppna det bakre fackets lock och dra ut pappersstödet.



- 2 Öppna luckan för matningsfacket och skjut höger pappersledare längst ut till höger.

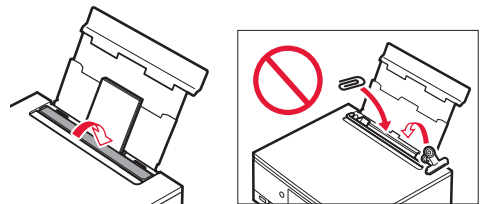


- 3 Lägg i flera ark fotopapper med utskriftssidan vänd uppåt och skjut pappersledaren på sidan mot kanten av pappersbunten.



- 4 Stäng luckan för matningsfacket.

- Följ instruktionerna på skärmen för att ange information om det påfyllda papperet.

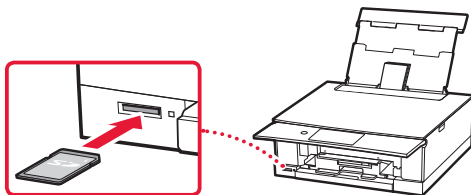


## Skriver ut foton som finns sparade på ett minneskort

- 1 Slå på skrivaren.

- 2 Lägg i flera ark fotopapper.

- 3 Sätt i minneskortet i kortplatsen.



- 4 Flytta åt höger och vänster mellan fotona och välj ett.

- 5 Tryck på knappen **Färg (Color)** för att starta utskriften.



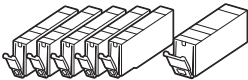
# Konfigurere skriveren

Tilkoblet oppsett  
<https://ij.start.canon>



## 1. Innhold i esken

- Blekktanker til oppsett



- Strømledning
- Installerings-CD-ROM for Windows
- Sikkerhetsinformasjon og viktig informasjon
- Komme i gang (denne manualen)

## 2. Fjerne beskyttelsesmateriale



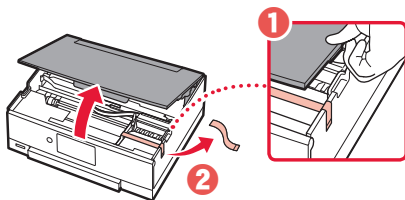
### Viktig!

Når utskriften starter, åpnes betjeningspanelet og papirutmatingsbrettet utvides automatisk. Ikke plasser objekter foran skriveren.

### 1 Fjern og kast eventuelt beskyttelsesmateriale og oransje tape.

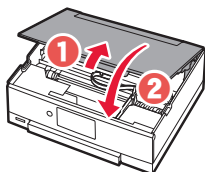
- Hvis skriveren brukes mens den oransje tapen er påsatt, kan det oppstå feil i skriveren.

### 2 Åpne skanneenheten/dekselet og fjern den oransje tapen.



### 3 Lukk skanneenheten/dekselet.

- Åpne skanneenheten/dekselet helt, og lukk den/det igjen.

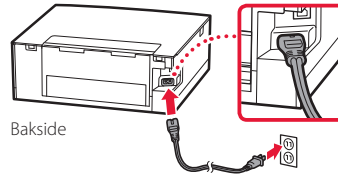


▲ Forsiktig!  
Pass på fingrene.

## 3. Slå på skriveren



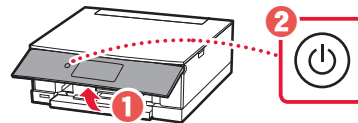
### 1 Koble til strømledningen.



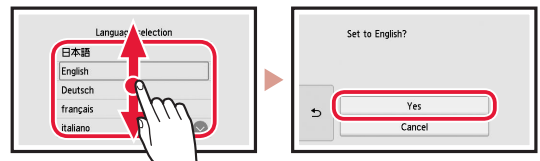
### Viktig!

Ikke koble til andre kabler på dette tidspunktet.

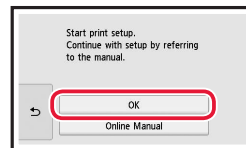
### 2 Åpne betjeningspanelet og trykk på PÅ (ON)-knappen.



### 3 Rull og trykk for å velge språk, og trykk deretter på Ja (Yes).



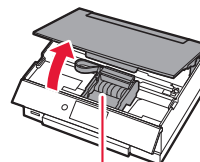
### 4 Trykk på OK.



## 4. Installere blekktankene



### 1 Åpne skanneenheten/dekselet.

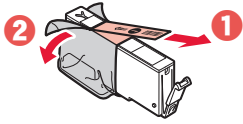


### Forsiktig!

Ikke rør skrivhodeholderen før den har sluttet å bevege seg.

## Konfigurere skriveren

### 2 Fjern tapen og filmen på blekktanken.



- Kontroller at det ikke er igjen tape.

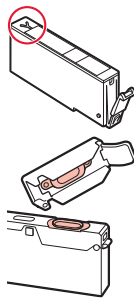
### 3 Fjern sakte den oransje korken.



#### »»» Viktig!

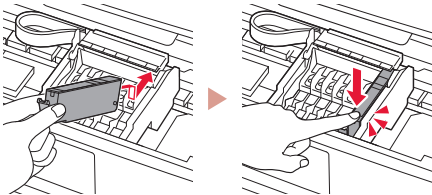
- Ikke klem på blekktanken når det Y-formede lufthullet er blokkert.

- Ikke berør de røde områdene.

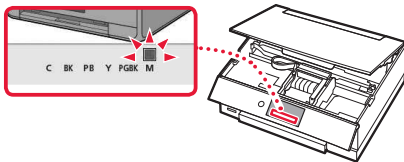


### 4 Installer blekktanken.

- Sett blekktanken inn i skrivehodet, og trykk den ned til den klikker.



### 5 Kontroller at fargen på blekktanken du installerte, vises på skjermen.

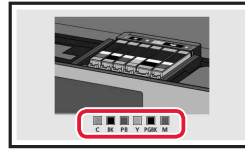


#### »»» Viktig!

Hvis fargen ikke vises på skjermen, selv om du har installert blekktanken, kan det være at fargen på blekktanken er feil eller at du har installert en blekktank som ikke støttes av skriveren (feks. en blekktank med annet modellnummer). Installer en blekktank for riktig farge, eller bruk den medfølgende blekktanken for oppsett.

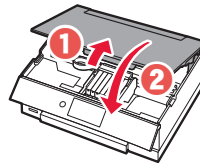
### 6 Gjenta trinn 2 til 5 for å installere alle blekktankene.

- Kontroller at alle fargene vises.



### 7 Lukk skanneenheten/dekselet.

- Skriveren starter initialisering.



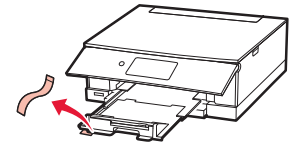
⚠ Forsiktig!  
Pass på fingrene.

## 5. Legge i papir

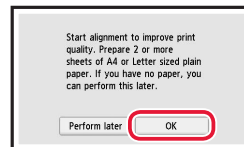


#### Kontroller!

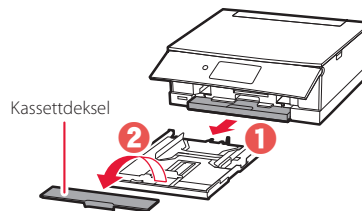
Fjern all oransje tape.



### 1 Trykk på OK.

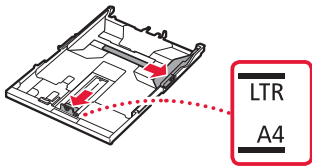


### 2 Fjern kassetten fra skriveren og fjern kassettdexelet.



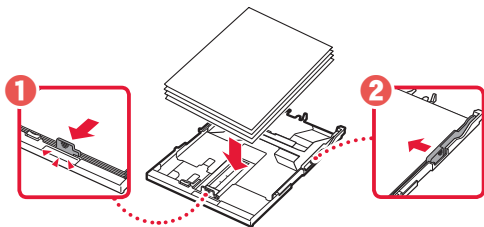
### 3 Dra fra hverandre papirførerne.

- Skyv høyre papirfører mot høyre kant. Juster fremre papirfører med Letter- eller A4-merket.

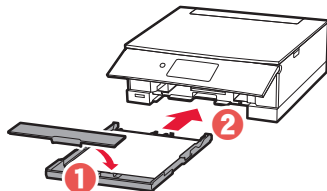


### 4 Legg i papir.

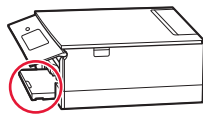
- Legg inn 2 ett eller flere ark vanlig papir i Letter- eller A4-format med utskriftssiden ned.
- Plasser papiret mot fremre papirfører, og juster høyre papirfører ut fra bredden på papiret.



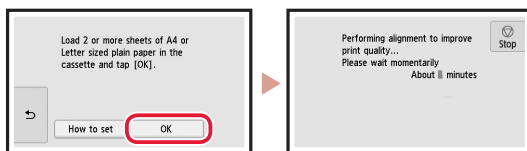
### 5 Fest kassettedekelet og skift ut kassetten.



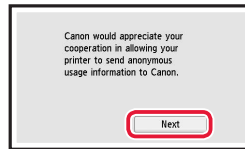
- Sjekk at alt ser ut som på skjemaet sett fra siden.



### 6 Trykk på OK.



### 7 Trykk på Neste (Next).

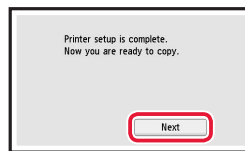


- Følg instruksjonene på skjermen for å fortsette oppsettet. Dette omfatter å foreta valg om å sende informasjon.

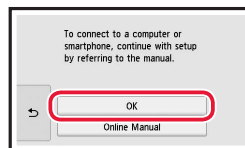
Se "Sende informasjon til Canon" i

**Sikkerhetsinformasjon og viktig informasjon.**

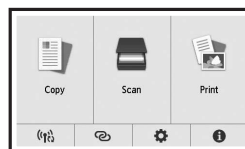
### 8 Trykk på Neste (Next).



### 9 Trykk på OK.



### 10 Sjekk at følgende skjermbilde vises.



Oppsett er nå fullført hvis du ønsker å bruke skriveren uten tilkobling til andre enheter.

### Hvilken enhet kobler du til?



Datamaskin



Datamaskin og smarttelefon






Smarttelefon

## 6-a

### Koble til en datamaskin

Hvis du bruker flere datamaskiner, utfører du disse trinnene på hver datamaskin.

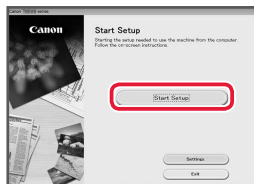


- 1 Åpne Canon-nettstedet fra en datamaskin.  
 
- 2 Velg  **Oppsett**.
- 3 Angi skriverens modellnavn og klikk på **Gå**.
- 4 Klikk på **Start**.
- 5 Klikk på **Hvis du allerede har gjort klar skriveren, går du til Koble til**.

#### »»» Merk

Følgende trinn gjelder Windows- (bortsett fra Windows 10 in S mode) og macOS-brukere. Ved bruk av et annet operativsystem fortsetter du oppsettet ved i stedet å følge instruksjonene på skjermen.

- 6 Klikk på **Last ned**.
- 7 Kjør den nedlastede filen.
- 8 Klikk på **Start oppsett (Start Setup)**.



- 9 Følg instruksjonene på skjermen.
  - Disse operasjonene kan ta litt tid.
  - Se "6-b. Koble til en smarttelefon" på side 5 hvis du i tillegg vil koble til en smarttelefon.

#### Bruke installerings-CD-ROM for Windows

Dobbelklikk på **EasySetup.exe** på CD-en, og fortsett deretter fra trinn 3. Hvis du ikke har internettforbindelse, kan du åpne **win**-mappen på CD-en og dobbelklikk på **SETUP.exe**. Dette installerer skriverdriveren.

## 6-b Koble til en smarttelefon

Hvis du bruker flere smarttelefoner, utfører du disse trinnene på hver smarttelefon.



**Klargjør følgende før du starter.**

- 1 Aktiver Wi-Fi-innstillingen på smarttelefonen.
- 2 Koble smarttelefonen til den trådløse ruter (hvis du har en trådløs ruter).  
Se manualene for smarttelefonen og den trådløse ruter for å få flere detaljer.

- 1 Installer "Canon PRINT Inkjet/SELPHY"-appen på smarttelefonen.
  - Skann QR-koden til høyre for å få tilgang til Canon-nettstedet, og last deretter ned appen.



- 2 Åpne den installerte appen.



- 3 Følg instruksjonene på skjermen i appen for å legge til skriveren.

---

Når du har lagt til skriveren din, kan du skrive ut fra smarttelefon.

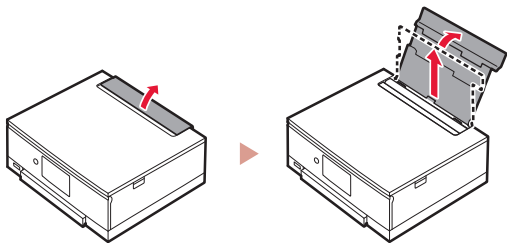
Se "Legge i fotopapir" på side 6 for mer informasjon om hvordan du skriver ut bilder.

---

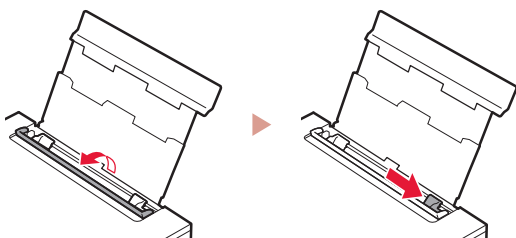
## Legge i fotonpapir

Fotonpapir kan kun legges i bakskuffen.

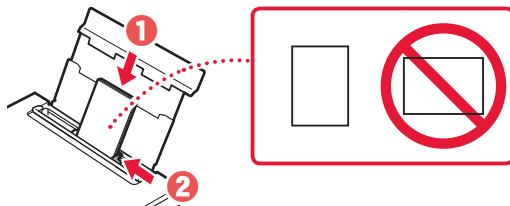
- 1 Åpne bakskuffdekelet, og forleng papirstøtten.



- 2 Åpne spordekelet for mating og skyv høyre papirfører helt mot høyre.



- 3 Legg inn flere ark med fotonpapir med utskriftssiden opp, og skyv papirføreren fra siden mot kanten på papirstabelen.

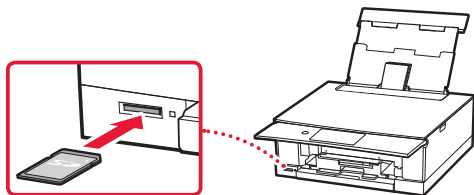


- 4 Lukk spordekelet for mating.
  - Følg instruksjonene på skjermen for å angi informasjon for papiret som er lagt inn.



## Skrive ut bilder som er lagret på et minnekort

- 1 Slå på skriveren.
- 2 Legg i flere ark fotonpapir.
- 3 Sett inn minnekortet i kortsporet.
- 4 Flikk til høyre og venstre gjennom bildene og velg ett.
- 5 Trykk på **Farge (Color)**-knappen for å begynne å skrive ut.



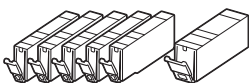
# Konfigurere printeren

Online konfiguration  
<https://ij.start.canon>



## 1. Æskens indhold

- Blækbeholdere til opsætning
- Netledning
- Installations-cd-rom til Windows
- Sikkerhedsoplysninger og vigtige oplysninger
- Før du begynder (denne vejledning)



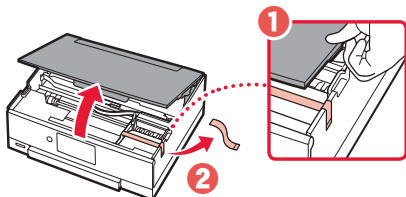
## 2. Fjern emballage



### »»» Vigtigt

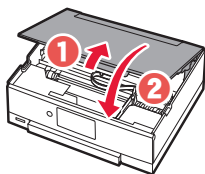
Når udskrivningen starter, åbnes kontrolpanelet, og udbakken til papir kommer automatisk ud. Undgå at placere noget foran printeren.

- 1 Fjern og bortskaf al emballage og orange tape.
  - Hvis du bruger printeren med orange tape eller emballage, der stadig er fastgjort, kan det forårsage fejl i printeren.
- 2 Åbn scanningsenheden/dækslet, og fjern den orange tape.



- 3 Luk scanningsenheden/dækslet.

- Åbn scanningsenheden/dækslet helt, og luk det derefter.

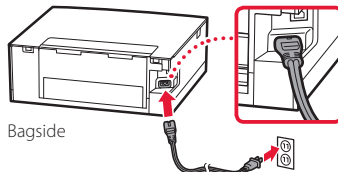


▲ Forsigtig  
Pas på dine fingre.

## 3. Tænd printeren



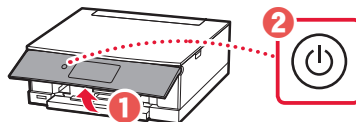
- 1 Tilslut netledningen.



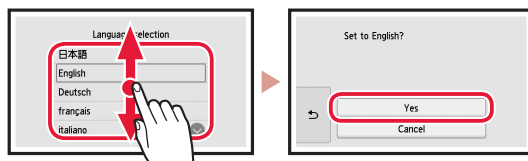
### »»» Vigtigt

På dette tidspunkt må du ikke tilslutte nogen andre kabler.

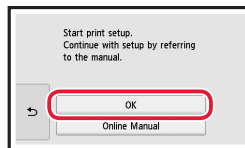
- 2 Åbn kontrolpanelet, og tryk på knappen **TIL (ON)**.



- 3 Rul og tryk for at vælge dit sprog, og tryk derefter på **Ja (Yes)**.



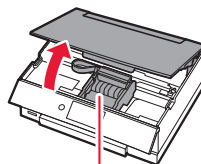
- 4 Tryk på **OK**.



## 4. Installation af blækbeholdere



- 1 Åbn scanningsenheden/dækslet.

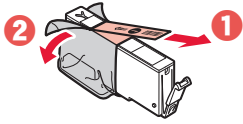


### ▲ Forsigtig

Undgå at røre ved printheadholderen, før den stopper.

## Konfigurere printeren

### 2 Fjern tapen og filmen på blækbeholderen.



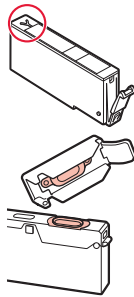
- Tjek, at der ikke er noget tape tilbage.

### 3 Fjern langsomt den orange hætte.



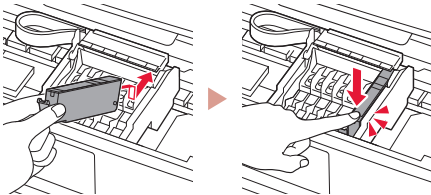
#### Vigtigt

- Undlad at trykke på blækbeholderen, mens det Y-formede luft hul er blokeret.
- Rør ikke de områder, der vises med rødt.

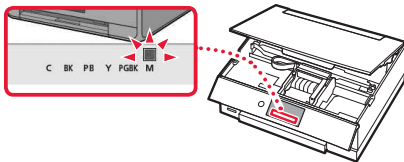


### 4 Installer blækbeholderen.

- Indsæt blækbeholderen i printhovedet, og tryk ned, indtil den klikker.



### 5 Tjek, at farven på den blækbeholder, du installerede, vises på skærmen.

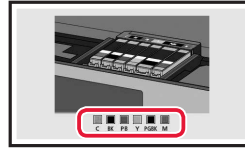


#### Vigtigt

Hvis farven ikke vises på skærmen, selvom du har installeret blækbeholderen, er farven i blækbeholderen muligvis forkert, eller du har muligvis installeret en blækbeholder, der ikke understøttes af denne printer, f.eks. en blækbeholder med et andet modelnummer. Du skal enten installere en blækbeholder med den korrekte farve eller bruge den medfølgende blækbeholder til opsætningen.

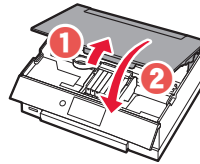
### 6 Gentag trin 2 til 5 for at installere alle blækbeholderne.

- Tjek, at alle farverne vises.



### 7 Luk scanningsenheden/dækslet.

- Printeren initialiseres.



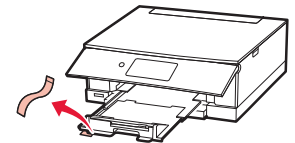
- ▲ Forsigtig  
Pas på dine fingre.

## 5. Ilægning af papir

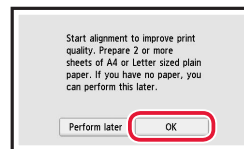


#### Tjek!

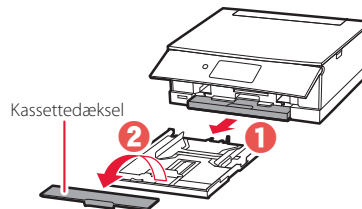
Fjern eventuelt orange tape.



### 1 Tryk på OK.



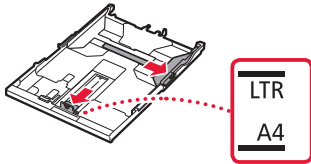
### 2 Fjern kassetten fra printeren, og fjern kassettedækslet.





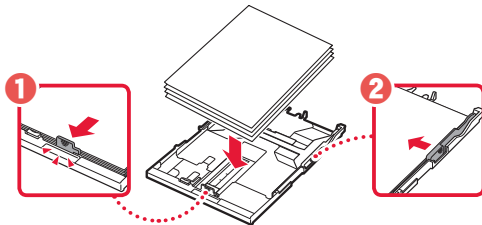
### 3 Skub papirstyrene fra hinanden.

- Skub højre papirstyr til den højre kant. Juster det forreste papirstyr med Letter- eller A4-mærket.

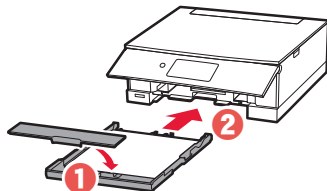


### 4 Ilæg papir.

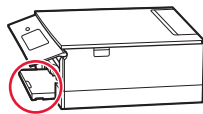
- Ilæg 2 eller flere ark almindeligt Letter- eller A4-papir med udskriftssiden nedad.
- Placer papiret mod det forreste papirstyr, og juster derefter det højre papirstyr med bredden af papiret.



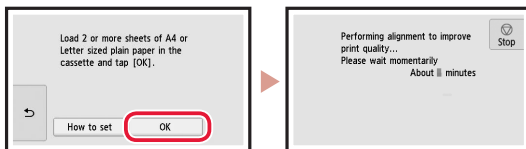
### 5 Sæt kassettedækslet på, og udskift kassetten.



- Kig på printeren fra siden, og bekræft, at det ser ud som på tegningen.



### 6 Tryk på OK.

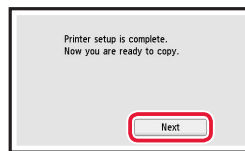


### 7 Tryk på Næste (Next).

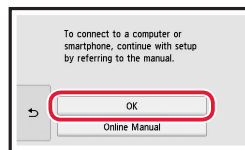


- Følg vejledningen på skærmen for at fortsætte opsætningen. Dette omfatter valg vedrørende afsendelse af oplysninger. Se "Send oplysninger til Canon" i **Sikkerhedsoplysninger og vigtige oplysninger**.

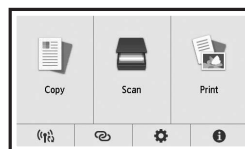
### 8 Tryk på Næste (Next).



### 9 Tryk på OK.



### 10 Tjek, at følgende skærbillede vises.



Hvis du vil bruge printeren uden at tilslutte andre enheder, er opsætningen færdig nu.

### Hvilken enhed tilslutter du?



Computer



Computer og  
smartphone



Smartphone

## 6-a

### Tilslutning til en computer


Hvis du bruger flere computere, skal du udføre disse trin på hver computer.



- 1 Gå til Canon-webstedet fra en computer.

<https://ij.start.canon>

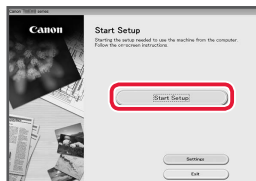


- 2 Vælg  **Konfiguration**.
- 3 Skriv printerens modelnavn, og klik på **Ok**.
- 4 Klik på **Start**.
- 5 Klik på **Hvis du allerede har forberedt din, skal du gå til Tilslut**.

#### »»» Bemærk

Følgende trin gælder for Windows- (bortset fra Windows 10 in S mode) og macOS-brugere. Hvis du bruger andre operativsystemer, skal du fortsætte konfigurationen ved at følge instruktionerne på skærmen i stedet.

- 6 Klik på **Hent**.
- 7 Kør den downloadede fil.
- 8 Klik på **Start opsætning (Start Setup)**.



- 9 Følg instruktionerne på skærmen.
  - Disse handlinger kan tage lidt tid.
  - Hvis du også vil tilslutte en smartphone, skal du se "6-b. Tilslutning til en smartphone" på side 5.

#### Brug installations-cd-rom'en til Windows

Dobbeltklik på **EasySetup.exe** på cd-rom'en, og fortsæt derefter fra trin 3. Hvis du ikke har internetforbindelse, skal du åbne mappen **win** på cd-rom'en og dobbeltklikke på **SETUP.exe**. Herefter installeres printerdriveren.

## 6-b Tilslutning til en smartphone

Hvis du bruger flere smartphones, skal du udføre disse trin på hver smartphone.



### Forbered følgende inden start.

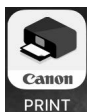
- 1 Aktivér indstillingen Wi-Fi på din smartphone.
  - 2 Slut din smartphone til den trådløse router (hvis du har en trådløs router).
- Se brugervejledningerne til din smartphone og trådløse router for at få flere oplysninger.

### 1 Installer appen "Canon PRINT Inkjet/SELPHY" på din smartphone.

- Scan den QR-kode, der vises til højre, for at få adgang til webstedet Canon, og download derefter appen.



### 2 Åbn den installerede app.



### 3 Følg instruktionerne på skærmen i appen for at tilføje din printer.

---

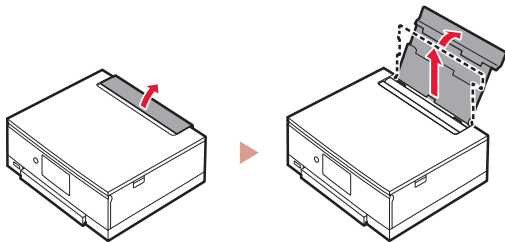
Når du har tilføjet din printer, kan du udskrive fra din smartphone.  
Hvis du vil udskrive fotos, skal du se "Ilægning af fotopapir" på side 6.

---

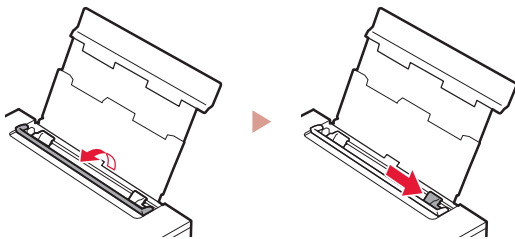
## Ilægning af fotopapir

Der kan kun lægges fotopapir i den bagerste bakke.

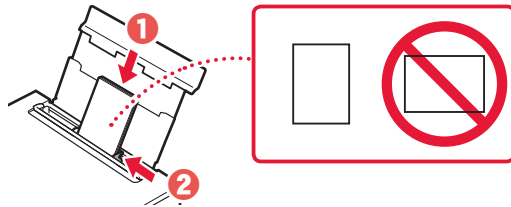
- 1 Åbn dækslet til bagerste bakke, og træk papirstøtten ud.



- 2 Åbn arkføderdækslet, og skub det højre papirstyr helt ud til højre.

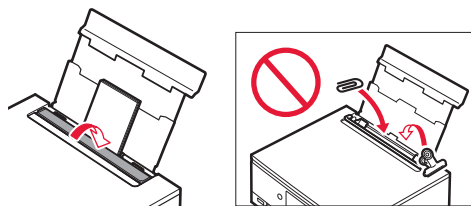


- 3 Ilæg flere ark fotopapir med udskriftssiden opad, og skub papirstyret på siden mod kanten af papirstakken.



- 4 Luk arkføderdækslet.

- Følg instruktionerne på skærmen for at angive oplysninger for det ilagte papir.

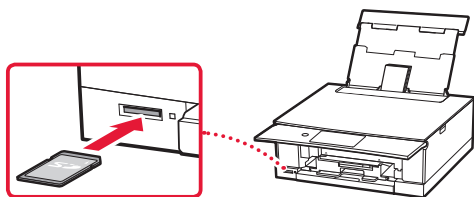


## Udskrivning af fotos, der er gemt på et hukommelseskort

- 1 Tænd printeren.

- 2 Ilæg flere ark fotopapir.

- 3 Indsæt hukommelseskortet i kortstikket.



- 4 Svip til højre og venstre gennem fotoerne, og vælg et.

- 5 Tryk på **Farve (Color)**-knappen for at starte udskrivning.

# Tulostimen asennus

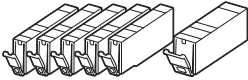
## Online-asennus

<https://ij.start.canon>



## 1. Paketin sisällys

• Mustesäiliöt asennusta varten



• Virtajohto

• Asennus-CD Windows-tietokoneelle

• Turvallisuus ja tärkeitä tietoja

• Aloitusopas (tämä käyttöopas)

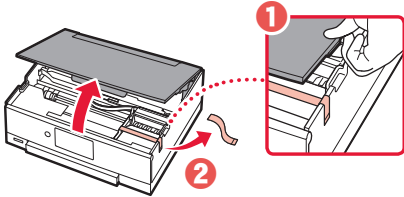
## 2. Pakkausmateriaalien poistaminen



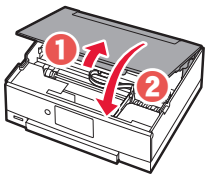
### »»» Tärkeää

Kun tulostus alkaa, käyttöpaneeli avautuu ja paperin luovutustaso tulee ulos automaattisesti. Älä aseta mitään tulostimen eteen.

- 1 Poista kaikki pakkausmateriaalit ja oranssi teippi.
  - Tulostimen käyttö oranssi teippi tai pakkausmateriaali yhä kiinni voi aiheuttaa tulostimen toimintahäiriön.
- 2 Avaa skannausyksikkö/kansi ja poista oranssi teippi.



- 3 Sulje skannausyksikkö/kansi.
  - Avaa skannausyksikkö/kansi täysin ja sitten sulje se.

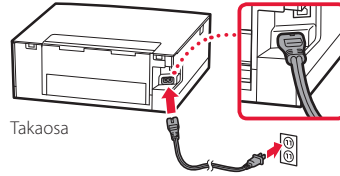


▲ Huomio  
Varo sormiasi.

## 3. Virran kytkeminen tulostimeen



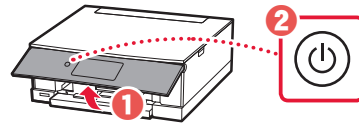
- 1 Kytke virtajohto.



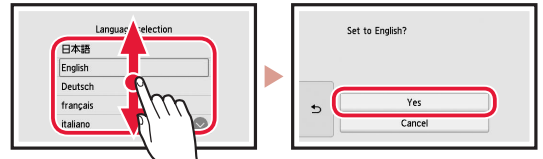
### »»» Tärkeää

Älä tässä vaiheessa kytke mitään muuta johtoa.

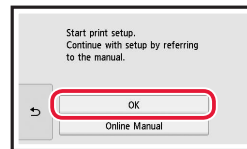
- 2 Avaa käyttöpaneeli ja paina **KÄYTTÖSSÄ (ON)**-painiketta.



- 3 Valitse kieli vierittämällä ja napauttamalla, ja napauta sitten **Kyllä (Yes)**.



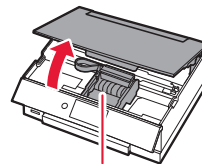
- 4 Napauta **OK**.



## 4. Mustesäiliöiden asennus



- 1 Avaa skannausyksikkö/kansi.

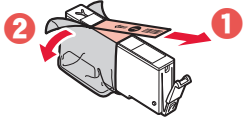


### ▲ Huomio

Älä koske tulostuspään pidikkeeseen, ennen kuin sen liike pysähtyy.

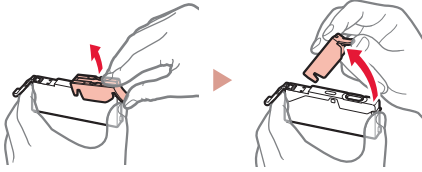
## Tulostimen asennus

### 2 Poista teippi ja kalvo mustesäiliöstä.



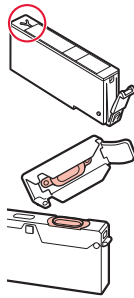
- Tarkista, ettei teippiä jää mihinkään kiinni.

### 3 Irrota oranssi suojus hiljaa.



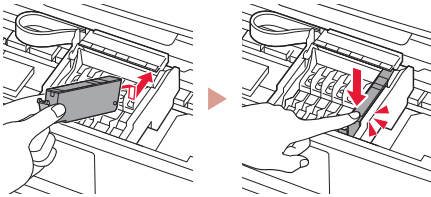
#### »»» Tärkeää

- Älä purista mustesäiliön molemmilta puolilta niin, että Y-muotoinen ilmareikä tukkeutuu.
- Älä koske merkittyihin punaisiin alueisiin.

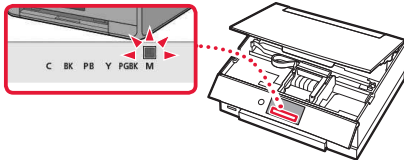


### 4 Asenna mustesäiliö.

- Aseta mustesäiliö tulostuspäähän ja paina sitä alas päin, kunnes se napsahtaa.



### 5 Tarkista, että asennetun mustesäiliön väri näkyy näytössä.

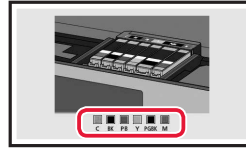


#### »»» Tärkeää

Jos väri ei näy näytössä, vaikka olet asentanut mustesäiliön, mustesäiliön väri voi olla väärä tai olet voinut asentaa mustesäiliön, jonka mallinumeroa tämä tulostin ei tue. Asenna joko oikean värin mustesäiliö tai käytä asennusta varten toimitettua mustesäiliötä.

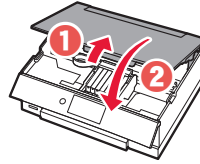
### 6 Toista vaiheet 2 - 5 asentaessasi kaikki mustesäiliöt.

- Tarkista, että kaikki värit tulevat näkyviin.



### 7 Sulje skannausyksikkö/kansi.

- Tulostin aloittaa alustamisen.



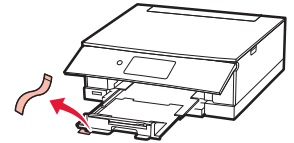
- ▲ Huomio  
Varo sormiasi.

## 5. Paperin asettaminen

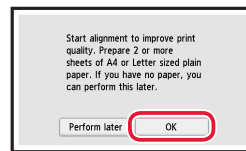


#### Varmista!

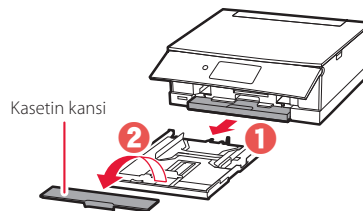
Irrota kaikki oranssi teippi.



### 1 Napauta OK.

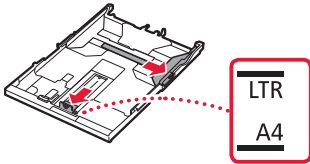


### 2 Poista kasetti tulostimesta ja poista kasetin kansi.



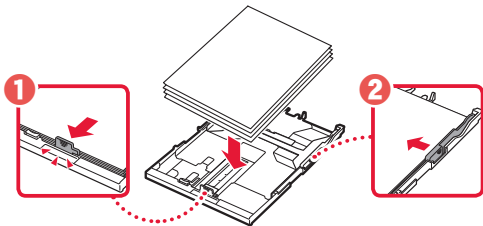
### 3 Liu'uta paperiohjaimet erilleen.

- Liu'uta oikeanpuoleinen paperiohjain oikeaan reunaan. Kohdistamalla etummainen paperiohjain Letter- tai A4-merkin kanssa.

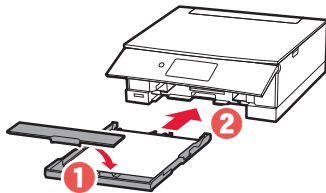


### 4 Lisää paperia.

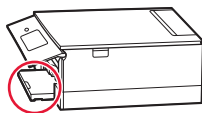
- Aseta vähintään 2 Letter- tai A4-kokoista arkki tavallista paperia tulostuspuoli alaspäin.
- Aseta paperi edessä olevaa paperiohjainta vasten ja kohdistamalla oikeanpuoleinen paperiohjain paperin leveyteen.



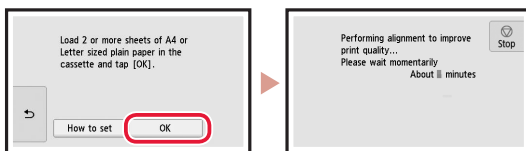
### 5 Aseta kasetin kansi ja aseta kasetti takaisin paikoilleen.



- Katso sitä sivulta ja varmista, että se on kaavion kaltainen.



### 6 Napauta OK.

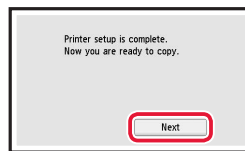


### 7 Napauta Seuraava (Next).

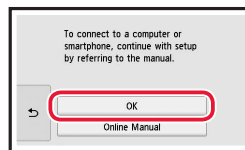


- Jatka asennusta noudattamalla näytössä näkyviä ohjeita. Tähän sisältyy valintojen tekeminen tietojen lähettämiseen. Katso kohtaa "Tietojen lähettäminen Canonille" luvusta **Turvallisuus ja tärkeitä tietoja**.

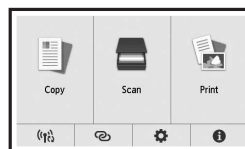
### 8 Napauta Seuraava (Next).



### 9 Napauta OK.



### 10 Tarkista, että seuraava näyttö tulee näkyviin.



Jos käytät tulostinta ilman yhteyttä muihin laitteisiin, asetus on valmis.

## Mitä laitetta olet yhdistämässä?



Tietokone



Tietokone ja  
älypuhelin



Älypuhelin



## 6-a

### Yhdistäminen tietokoneeseen

Jos käytät useita tietokoneita, suorita nämä vaiheet jokaiselle tietokoneelle.



- 1 Avaa tietokoneesta Canon-verkkosivusto.

<https://ij.start.canon>



- 2 Valitse  **Määrittys**.

- 3 Anna tulostinmallin nimi ja valitse **Siirry**.

- 4 Valitse **Aloita**.

- 5 Valitse **Jos olet jo valmistellut tulostimen, siirry kohtaan Yhdistä**.

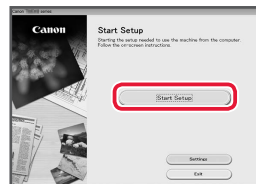
#### »»» Huomautus

Seuraavat vaiheet ovat Windows- (paitsi Windows 10 in S mode) ja macOS-käyttäjille. Jos käytät muuta käyttöjärjestelmää, jatka asennusta näytön ohjeiden mukaan.

- 6 Valitse **Lataa**.

- 7 Suorita ladattu tiedosto.

- 8 Valitse **Aloita asetukset (Start Setup)**.



- 9 Noudata näytön ohjeita.

- Näissä toiminnoissa voi kestää hetken.
- Jos haluat liittää myös älypuhelimien, katso kohtaa "6-b. Yhdistäminen älypuhelimeen" sivulla 5.

#### Asennus-CD-levyn käyttö Windows-järjestelmässä

Kaksoinapsauta CD-levyn **EasySetup.exe**-tiedostoa, ja jatka sitten vaiheesta 3. Jos sinulla ei ole internet-yhteyttä, avaa CD-levyn **win**-kansio ja kaksoinapsauta **SETUP.exe**. Tämä asentaa tulostinajurin.



## 6-b

### Yhdistäminen älypuhelimien

Jos käytät useita älypuhelimia, suorita nämä vaiheet jokaiselle älypuhelimelle.



#### Valmistelee seuraavat, ennen kuin aloitat.

- 1 Ota Wi-Fi-asetus käyttöön älypuhelimessä.
  - 2 Yhdistä älypuhelin langattomaan reitittimeen (jos käytössäsi on langaton reititin).
- Katso lisätietoja älypuhelimien ja langattoman reitittimen käyttöoppaista.

#### 1 Asenna "Canon PRINT Inkjet/SELPHY" -sovellus älypuhelimien.

- Skannaa QR-koodi, joka näkyy oikealla, niin pääset Canon-sivustoon, ja lataa sitten sovellus.



#### 2 Avaa asennettu sovellus.



#### 3 Noudata tulostimen lisäämisessä sovelluksen näytön ohjeita.

---

Kun olet lisännyt tulostimen, voit tulostaa älypuhelimesta.

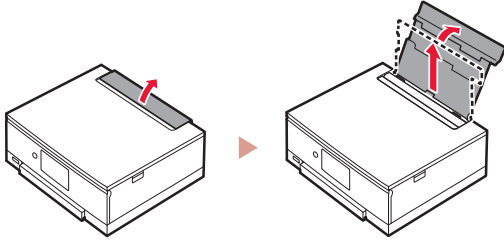
Jos tulostat valokuvia, katso kohtaa "Valokuvapaperin asettaminen" sivulla 6.

---

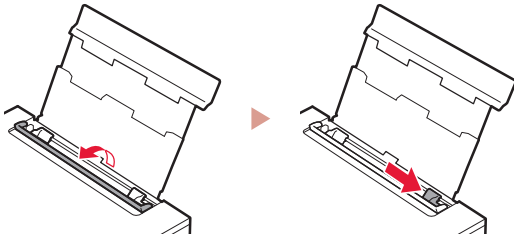
# Valokuvapaperin asettaminen

Valokuvapaperia voi lisätä ainoastaan takalokeroon.

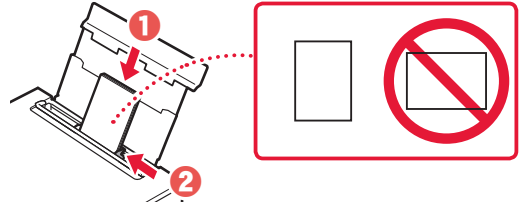
- 1 Avaa takalokeron kansi ja avaa sitten paperituki.



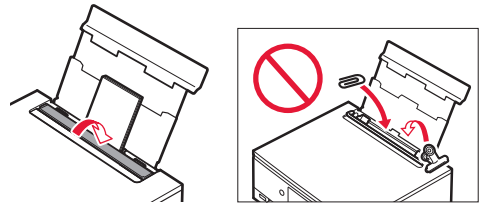
- 2 Avaa syöttöaukon kansi ja liu'uta oikeanpuoleinen paperiohjain oikeaan reunaan.



- 3 Aseta useita arkkeja valokuvapaperia tulostuspuoli ylöspäin, ja liu'uta sitten sivun paperiohjain paperipinon reunaan vasten.



- 4 Sulje syöttöaukon kansi.
  - Jatka asetetun paperin tietojen asettamista noudattamalla näytössä näkyviä ohjeita.

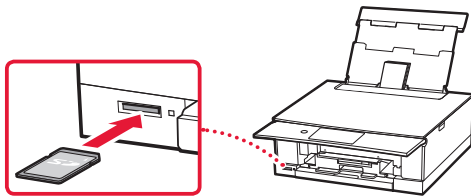


# Muistikorttiin tallennettujen valokuvien tulostaminen

- 1 Kytke tulostimen virta.

- 2 Lisää useita arkkeja valokuvapaperia.

- 3 Aseta muistikortti korttipaikkaan.



- 4 Selaa valokuvia sipaisemalla oikealle ja vasemmalle, ja valitse kuva.

- 5 Käynnistä tulostus napauttamalla **Väri (Color)**-painiketta.





Access Online Manual  
Zugriff auf das Online-Handbuch  
Accedere al Manuale online  
Acceso al Manual en línea  
Läs Onlinehandbok  
Åbn Online vejledning

Accès au Manuel en ligne  
Online handleiding openen  
Acesse o Manual On-line  
Αποκτήστε πρόσβαση στο Εγχειρίδιο Online  
Gå til Nettbasert manual  
Online-käyttöopas-oppaan käyttö

From your browser

À partir de votre navigateur

Über Ihren Browser

Via de browser

Dal browser

Do seu navegador

Desde su navegador

Από το πρόγραμμα περιήγησής σας

Från webbläsaren

Fra nettleseren din

Fra din browser

Selaimesta

