

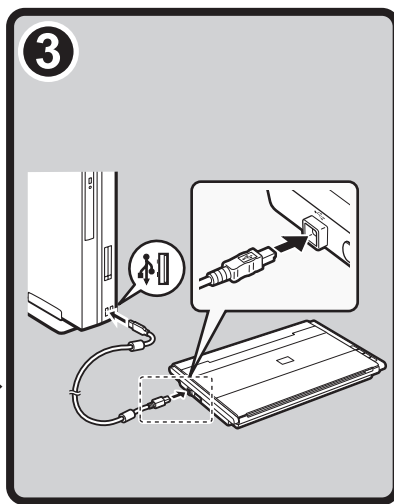
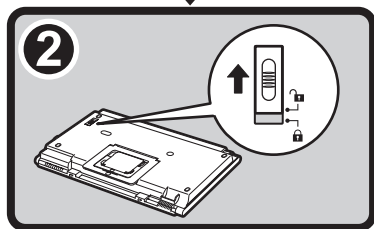
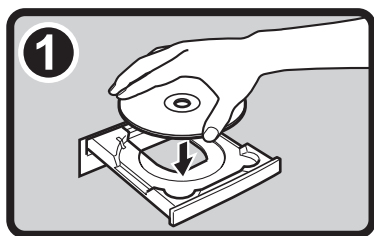
CanoScan LiDE 700F

Quick Start Guide

Please read this guide before operating this scanner. After you finish reading this guide, store it in a safe place for future reference.

Table of Contents

Safety Precautions.....	1	Using the Scanner Buttons	9
Package Contents.....	3	Scanning with MP Navigator EX.....	10
Installing the Software.....	4	Scanning Film	11
Preparing the Scanner.....	7	Positioning the Scanner.....	15
Try Scanning.....	8	Specifications.....	16



FCC Notice (U.S.A. Only)

Model Number : K10337

This device complies with Part 15 of the FCC Rules. Operation is subject to the following two conditions: (1) This device may not cause harmful interference, and (2) this device must accept any interference received, including interference that may cause undesired operation.

Note: This equipment has been tested and found to comply with the limits for a Class B digital device, pursuant to Part 15 of the FCC Rules. These limits are designed to provide reasonable protection against harmful interference in a residential installation. This equipment generates, uses and can radiate radio frequency energy and, if not installed and used in accordance with the instructions, may cause harmful interference to radio communications.

However, there is no guarantee that interference will not occur in a particular installation. If this equipment does cause harmful interference to radio or television reception, which can be determined by turning the equipment off and on, the user is encouraged to try to correct the interference by one or more of the following measures:

- Reorient or relocate the receiving antenna.
- Increase the separation between the equipment and receiver.
- Connect the equipment into an outlet on a circuit different from that to which the receiver is connected.
- Consult the dealer or an experienced radio/TV technician for help.

Use of a shielded cable is required to comply with Class B limits in Subpart B of Part 15 of the FCC Rules.

Do not make any changes or modifications to the equipment unless otherwise specified in the manual. If such changes or modifications should be made, you could be required to stop operation of the equipment.

Canon U.S.A., Inc.
One Canon Plaza
Lake Success, NY 11042
1-516-328-5600



As an ENERGY STAR® Partner, Canon Inc. has determined that this product meets the ENERGY STAR guidelines for energy efficiency.

Warning

When you use this product, you should pay attention to the following legal issues:

- Scanning of certain documents, such as bank notes (bank bills), government bonds and public certificates, may be prohibited by law and may result in criminal and/or civil liability.
- You may be required under law to obtain authorization from a person possessing copyrights or other legal rights to the item being scanned.

If you are uncertain of the legality of scanning any particular item, you should consult your legal adviser in advance.

- Microsoft is a registered trademark of Microsoft Corporation.
- Windows is a trademark or registered trademark of Microsoft Corporation in the U.S. and/or other countries.
- Windows Vista is a trademark or registered trademark of Microsoft Corporation in the U.S. and/or other countries.
- Macintosh and Mac are trademarks of Apple Inc., registered in the U.S. and other countries.
- Adobe, Adobe RGB and Adobe RGB (1998) are either registered trademarks or trademarks of Adobe Systems Incorporated in the United States and other countries.
- ©ArcSoft, Inc. All rights reserved for PhotoStudio.
- Other names and products not mentioned above may be registered trademarks or trademarks of their respective companies.

Safety Precautions

Please read and take note of the following precautions before using the scanner and accessories.

WARNING

Indicates a warning concerning operations that may lead to death or injury to persons if not performed correctly. In order to use the scanner safely, always pay attention to these warnings.

CAUTION

Indicates a caution concerning operations that may lead to injury to persons or damage to property if not performed correctly. In order to use the scanner safely, always pay attention to these cautions.

WARNING

This product emits low level magnetic flux. If you use a cardiac pacemaker and feel abnormalities, please move away from this product and consult your doctor.

About Locations

WARNING

- Do not place the scanner near flammable liquids such as alcohol or thinners. If the internal electrical parts come in contact with flammable liquids, fire or electrical shock may result.

CAUTION

- Do not place the scanner in areas with high humidity, areas subject to direct sunlight, areas with high temperatures and areas near flame sources. Fire or electrical shock may result.
- Do not place the scanner on shaky stands, unstable surfaces or surfaces subject to frequent vibrations. If the scanner falls, it may cause injury.
- When setting up the stand, read this guide carefully to place the scanner correctly. Keep the document cover close except when necessary. Setting the stand incorrectly may result the scanner to fall sideways and cause injury.
- Do not push the scanner into a narrow cabinet or put a tablecloth on it or place on a thick rug. If the scanner has heat, it may cause fire or damage.

About the Power Supply

WARNING

- Do not place heavy objects on, pull or excessively bend, twist or tie the USB cable. Damaged wires may cause fire or electrical shock.
- Always plug the USB cable in all the way. If it is not plugged in completely, fire or electrical shock may result.
- Do not use cables other than the one supplied. Fire or electrical shock may result.
- If lightning strikes in your neighborhood, unplug the USB cable from the scanner and refrain from using it. Lightning strikes could cause a fire, electric shock, or damage to the scanner.

CAUTION

- When unplugging the USB cable, always pull on the main body. Pulling the cable may damage the wires and lead to fire or electrical shock.

General Handling Precautions

WARNING

- Do not take apart or modify the scanner and supplies. Fire or electrical shock may result from improper handling of its components.
- If you hear unusual noises, see smoke, feel excessive heat or smell anything unusual, immediately unplug the USB cable and contact your retailer or Canon Customer Support Help Desk. Continued use may result in fires or electrical shock.
- Do not use flammable sprays near the scanner. Do not spill water or liquids into the scanner. Also do not drop metallic pieces such as paper clips or staples into the scanner. If they enter and contact the inner electrical parts, fire or electrical shock may result.
- When cleaning the scanner, always unplug the USB cable. Wipe with a soft dry cloth. When it is still dirty, use a cloth dampened with water and wrung well, and then wipe off moisture with a soft dry cloth. Do not use flammable liquids such as alcohol, benzene or thinners. If a flammable liquid enters the inner electrical parts or the cables are damaged by plugging/unplugging, fire or electrical shock may result.
- When transporting the scanner, always unplug the cables. Damaged cables could cause fire or electrical shock.

If anything enters the scanner, immediately unplug the USB cable and contact your retailer or Canon Customer Support Help Desk.

CAUTION

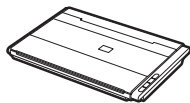
- Do not release the document cover until it completely opens/closes. If the document cover falls, it may lead to pinch your hands or damage the scanner and result in injury.
- Do not place heavy objects on the scanner. Objects may fall and cause injury.
- Do not place items that weigh 2.0 kg (4.4 lbs.) or more on the document glass. Also, do not press heavily (i.e., more than 2.0 kg (4.4 lbs.)) on the document cover or the document glass. The document glass may break and cause personal injury.
- Do not bump the document glass or drop heavy books or objects on it. The document glass may break and injure you.
- When not in use for extended periods, unplug the USB cable for safety.
- Do not use the supplied CD-ROM in regular CD players. It produces excessively loud sound that may cause hearing damage.

Setup and Operating Conditions

- Do not set up in areas where there are excessive fluctuations in temperature. Also do not move the scanner from low-temperature areas to high temperature areas. Condensation may cause image errors. Leave the scanner enough time to gradually adapt to the new conditions before use.
- Do not place the scanner in areas subject to direct sunlight or strong room light. It may cause damage to the scanner or decrease image quality. If you have to place the scanner in direct sunlight, make sure to use a thick curtain to block the light.
- Leave enough space (approximately 20 cm (8 in.)) around the scanner when setting up.

Package Contents

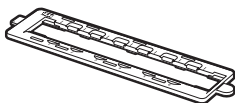
Scanner and Accessories



Scanner



USB Cable

Film Guide
(for 35mm film strip)

Film Adapter Unit

Documentation

- **Quick Start Guide** (this document)
- Additional Documents

Setup CD-ROM

- Software Programs
 - ScanGear (scanner driver)
 - MP Navigator EX (utility software)
 - Solution Menu (menu panel software)
 - ArcSoft PhotoStudio (image editing software)
- On-screen Manuals
 - **Scanning Guide** (for ScanGear, MP Navigator EX, and troubleshooting)
 - Manuals for bundled application programs

*In this guide, Windows Vista operating system Ultimate Edition (hereafter referred to as "Windows Vista") screenshots are used to illustrate explanations common to all operating systems.

Installing the Software



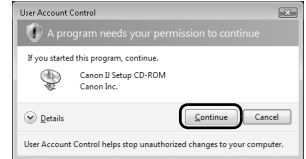
- Do NOT connect the scanner to a computer before installing the software. If you connect the scanner and the **Found New Hardware** screen appears, unplug the USB cable from the computer and click **Cancel**. The screen may close automatically when the USB cable is unplugged.
- Quit all running applications before installation.
- To upgrade from Windows XP to Windows Vista, first uninstall software bundled with the Canon scanner.
- Log in as an administrator to install the software.
- Do not switch users during the installation process.

1 Place the **Setup CD-ROM** in the drive.

For Macintosh: Double-click the **Setup** icon. Enter the administrator ID and password on the authentication dialog box.

For Windows 2000/XP and Macintosh, skip step 2 and go to step 3.

2 For Windows Vista, when the **AutoPlay** dialog box appears, run the setup program, and then click **Continue** to proceed when the **User Account Control** dialog box appears.



3 If prompted, select your language and place of residence, and then click **Next**. In some countries, these dialog boxes will not appear.

4 Click **Easy Install** on the main menu.



5 Click **Install** to start installation.

Carefully read the License Agreement, and then click **Yes** to proceed.

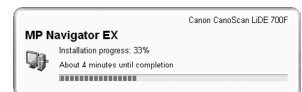
For Macintosh, skip step 6 and go to step 7.



6 For Windows, carefully read the **Please Allow All Install Wizard Processes** screen, and then click **Next**.



7 Follow the on-screen instructions to perform the installation.



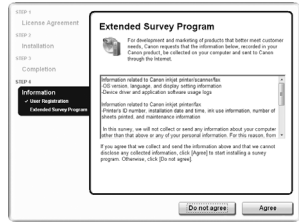
8 For users in the U.S.A., when the **User Registration** screen appears, follow the on-screen instructions to ensure product support.

For Macintosh, skip step 9 and go to step 10.



➡ Go to the next page

- 9** For Windows, when the **Extended Survey Program** screen appears, confirm it. If you can agree, click **Agree**.



- 10** When the installation is complete, click **Restart** to restart your computer.

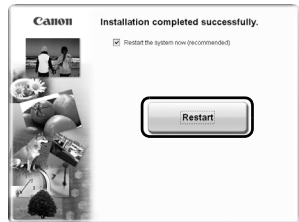
For Windows: After restarting the computer, Solution Menu will appear.

For Macintosh: After restarting the computer, **Solution Menu** icon will be registered in the Dock.

<Solution Menu>

You can select either MP Navigator EX, the **Scanning Guide** (on-screen manual), or the Online Registration.

* The Online Registration is available for users in the U.S.A. only.

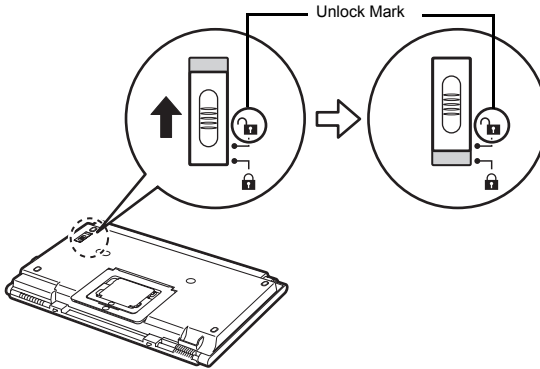


- Make sure to remove the CD-ROM from the drive and store it in a safe place.
- If you encounter a problem during installation, see "Troubleshooting" in the on-screen manual: **Scanning Guide**.

Preparing the Scanner

Unlocking the Scanner

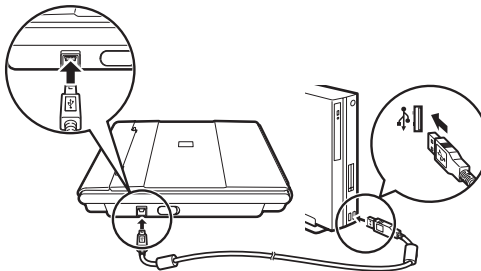
- 1 Peel the shipping tapes off the scanner.
- 2 Slide the lock switch on the bottom of the scanner toward the unlock mark (🔓).



- Handle the scanner with both hands. Be careful not to drop the scanner.
- When you carry or transport the scanner, make sure to slide the lock switch toward the lock mark (🔒) to fasten the scanning unit.

Connecting the Scanner

- 1 Connect the scanner to your computer with the supplied USB cable.

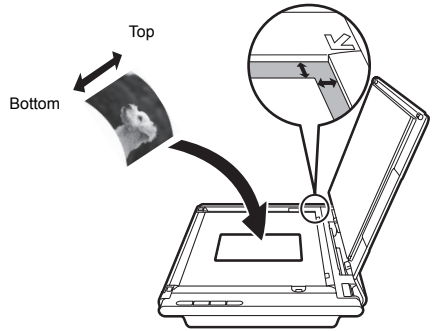


- Only use the USB cable provided with the scanner. Use of other cables may lead to a malfunction.
- Do not touch the metallic parts of the USB connector.
- The scanner does not have a power switch. The power is activated as soon as the computer is turned on.
- When the scanner is connected to the USB 1.1 port and **HI-SPEED USB Device Plugged into non-HI-SPEED USB Hub** message appears, ignore the message. The scanner operates in this condition without problems.

Try Scanning

This section explains the basic scanning procedures using MP Navigator EX.

1 Place a color photo document with the side to be scanned facing down on the document glass at least 1 cm (0.4 in.) away from the edges of the document glass, and then close the document cover.



2 Start MP Navigator EX.

For Windows: Double-click the **Canon Solution Menu** icon, then click **Scan/import photos or documents**.

For Macintosh: Click the **Solution Menu** icon in the Dock, then click **Scan/import photos or documents**.

3 Click **Photos/Documents (Platen)** (*1).

4 Select **Color Photo** in **Document Type**.

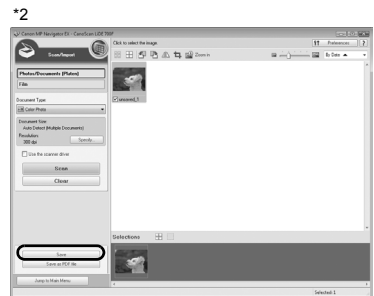
5 Click **Scan** to start scanning.




- Do not move the scanner while it is operating.
- Do not see the light source directly during a scan job.

6 When prompted that the scanning completed, click **Exit**.

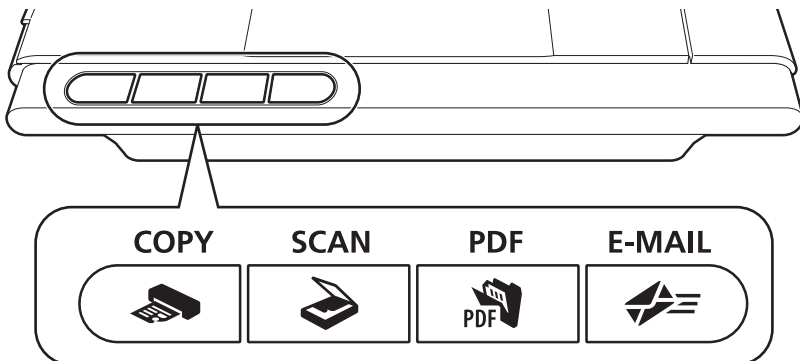
7 Click **Save** to save the image and close MP Navigator EX (*2).



• For more information on scanning using MP Navigator EX, bundled applications, and troubleshooting, see the on-screen manual: **Scanning Guide**. To open the on-screen manual: **Scanning Guide**, double-click the on-screen manual icon on the desktop, or click on  in ScanGear or MP Navigator EX.

Using the Scanner Buttons

Scanner buttons allow you to copy, scan, e-mail, and save scanned images in PDF format with a press of a button. Simply place your document on the scanner, and then press the scanner button for the required function. For more information, see the on-screen manual: **Scanning Guide**.



COPY Button

Prints (copies) the scanned image with a printer.



SCAN Button

Discriminates the document type automatically, then scans and saves it with appropriate settings.



PDF Button

Saves the scanned image as a PDF file.



E-MAIL Button

Attaches the scanned image to a new e-mail message.

- Before using scanner buttons, make sure that the required software programs for each function are installed on your computer using the supplied CD-ROM. See "Setup CD-ROM" on page 3. If the scanner buttons do not work properly, see "Troubleshooting" in the on-screen manual: **Scanning Guide**.
- **For Mac OS X v.10.3.9:** Before using the scanner buttons, you need to set Image Capture (in **Applications** folder) to open MP Navigator EX automatically when a scanner button is pressed. Start Image Capture, and then click **Options** and select MP Navigator EX in **Application to launch when scanner button is pressed**.

Scanning with MP Navigator EX

MP Navigator EX enables you to perform various tasks, such as compositing images, scanning with the scanner driver (ScanGear), and correcting/editing scanned images, as well as simply scanning.

Starting MP Navigator EX

1 Click **Scan/import photos or documents** in the Solution Menu.

You can also start it by following procedure.

For Windows: Select **Start – (All) Programs – Canon Utilities – MP Navigator EX 2.1**, and click **MP Navigator EX 2.1**.

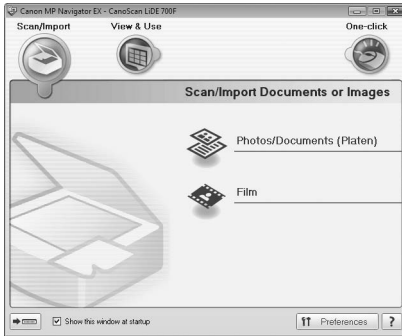
For Macintosh: Open **Applications – Canon Utilities** folders, then double-click the **MP Navigator EX 2.1** icon.

The navigation mode window of MP Navigator EX is displayed.

Features of MP Navigator EX

MP Navigator EX is constituted of the following three sheets by the function.

Scan/Import Documents or Images sheet



View & Use Images on your Computer sheet



Custom Scan with One-click sheet



• For more information on MP Navigator EX, see the on-screen manual: **Scanning Guide**.

Scanning Film

This scanner can scan 35 mm film strip one frame at a time. Follow the procedure below when scanning film.

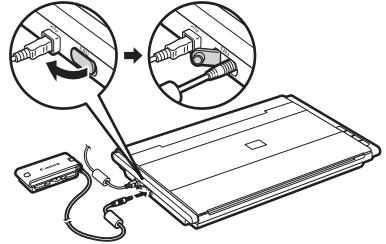


- Do not connect other than the accompanying Film Adapter Unit to the FAU connector. Use of other units may lead to malfunctions of the connected unit and the scanner.
- Do not touch the metallic parts of the FAU connector.
- Clean the document glass before placing the Film Guide on it, otherwise dirt and dust can affect image quality or damage the film.

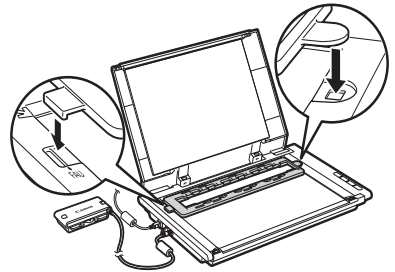
1 Attach the cable for the Film Adapter Unit to the FAU connector on the scanner's side panel.



Insert the cable plug of the Film Adapter Unit all the way into the FAU connector.



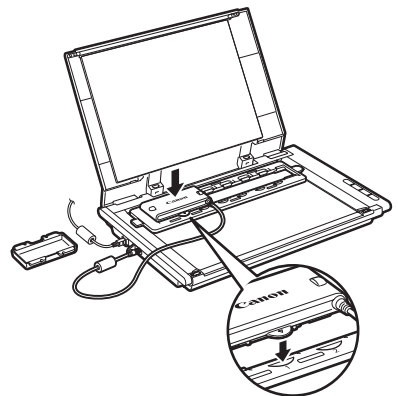
2 Open the document cover and place the Film Guide on the document glass of the scanner. Align the Film Guide's tab with the FAU symbol on the document glass of the scanner.



3 Remove the cap from the Film Adapter Unit and gently set the Film Adapter Unit over the first frame in the Film Guide.

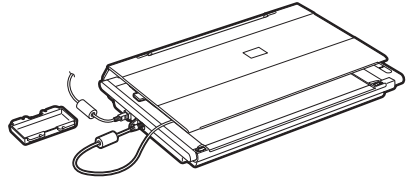
Align the tab on the Film Adapter Unit with the Film Guide.

You need to calibrate the scanner before scanning film for the first time. Do not place a film strip in the Film Guide at this point as it is not required for calibration.



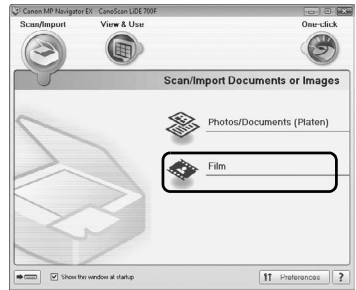
Scanning Film

4 Gently close the document cover.



5 Start MP Navigator EX.
Follow the step 2 in "Try Scanning" on page 8.

6 Click **Film**.



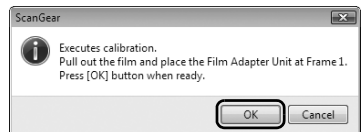
7 Click **Scan**.



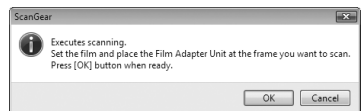
8 Click **OK** on the calibration message window.



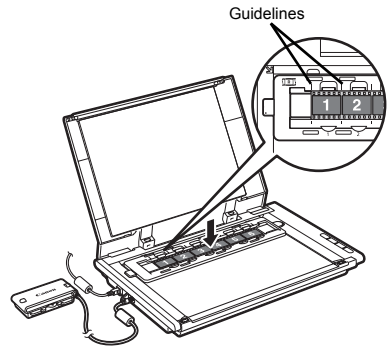
Do not move the scanner while it is operating.



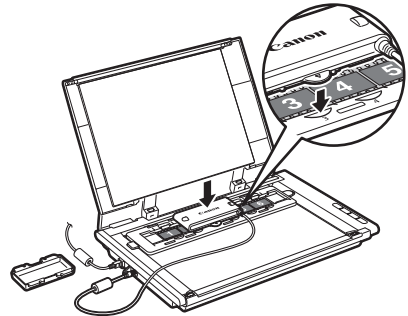
9 When the scanning message window appears, open the document cover, remove the Film Adapter Unit, and then attach the cap to the unit.




- 10** Place the film in the Film Guide.
Place the film face up in the Film Guide (images and words should read correctly from above) with the spaces between frames aligned with the guidelines on the guide.




- 11** Remove the cap from the Film Adapter Unit and gently set the unit over the frame you wish to scan.
Align the tab on the Film Adapter Unit with the Film Guide.




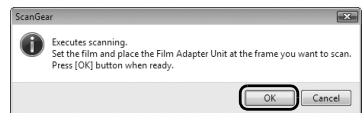
 Do not move the Film Adapter Unit once it has been placed on the Film Guide. Sliding it may scratch the film.

- 12** Gently close the document cover.


 The document cover does not touch the document glass. Be careful not to force the document cover down.

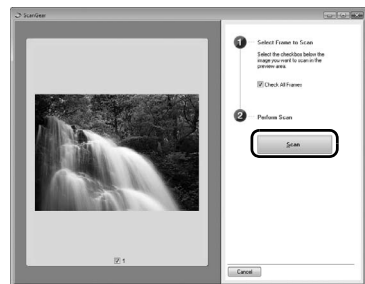
- 13** Click **OK** on the scanning message window.
The scanned image is displayed in the preview area.

 Do not move the scanner while it is operating.



- 14** Confirm the scanning image, and then click **Scan** to start scanning.

 Do not move the scanner while it is operating.

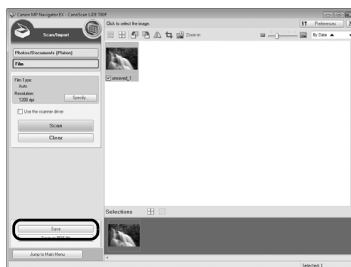


- 15** When prompted that the scanning completed, click **Exit**.

16 Click **Save** to save the image and close MP Navigator EX.



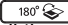
- After the scanning is finished, remove the Film Adapter Unit, and then attach the cap to the unit. Remove the film and the Film Guide from the document glass.
- Do not leave the film strip in the Film Guide for an extended period of time as heat from the unit may damage the film.
- For more information on scanning film, see "Scanning Film" in the on-screen manual: **Scanning Guide**.



Positioning the Scanner

Horizontal Position

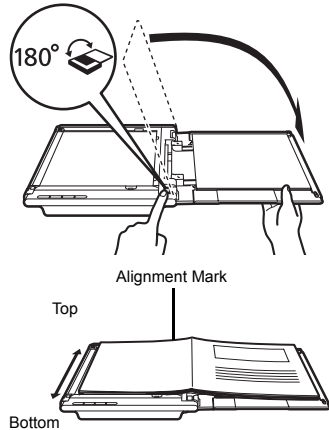
The document cover fully opens to allow easy scanning of large or bound documents. An oversized document can be scanned section by section into a single image using the stitch-assist function of MP Navigator EX. For details, see the on-screen manual: **Scanning Guide**.

Hold the document cover with one hand, and press and hold  at the base hinge as you carefully lower the cover all the way down.



Do not place items that weigh 2.0 kg (4.4 lbs.) or more on the scanner. The scanner may not work or you may break the document glass if you press down the document glass firmly.

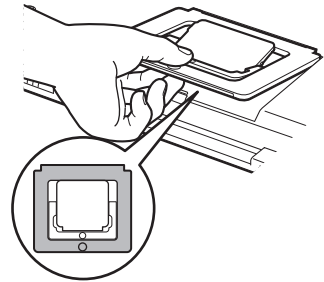
Cover the scanner with a black cloth if external light enters around the scanned item.



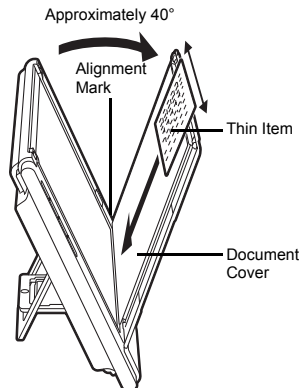
Upright Position

If you are scanning thin documents (i.e., a single sheet or double-folded sheet), this position saves the most space. Thick documents or films cannot be scanned in this position.

Pull out the stand on the bottom of the scanner until it clicks, and set the scanner upright on a flat stable surface. Gently open the document cover as far as it goes (stops at approximately 40°) and slide down the document along the document cover.



- Do not force the document cover open; it does not fully open when the scanner is in the upright position.
- Always close and secure the document cover first when lifting the scanner in the upright position.



Specifications

		CanoScan LiDE 700F
Scanner Type		Flatbed
Sensor Type		CIS (Color Contact Image Sensor)
Light Source		3-color (RGB) LED
Optical Resolution *1		9600 x 9600 dpi *2
Selectable Resolution		25-19200 dpi (ScanGear)
Scanning Bit Depth	Color	48 bit input (16 bit input for each color (RGB)) 48 bit or 24 bit output (16 bit or 8 bit output for each color (RGB))
	Grayscale	16 bit input / 16 bit *3 or 8 bit output
Scanning Speed *4 (Photo or Document)	Color	33.5 msec./line (4800 dpi), 33.8 msec./line (2400 dpi), 8.6 msec./line (1200 dpi), 4.5 msec./line (600 dpi), 2.4 msec./line (300 dpi)
	Grayscale, B&W	11.3 msec./line (4800 dpi), 5.9 msec./line (2400 dpi), 2.9 msec./line (1200 dpi), 1.8 msec./line (600 dpi), 2.3 msec./line (300 dpi)
Scanning Speed *4 (Film)		2.8-223.9 msec./line
Interface		Hi-Speed USB *4
Maximum Document Size		A4/Letter: 216 x 297 mm
Film Type/Number of Frames		35 mm strip (negative/positive) *5 / 1 frame
Scanner Buttons		4 buttons (COPY, SCAN, PDF, E-MAIL)
Operating Range	Temperature	5 °C to 35 °C (41 °F to 95 °F)
	Humidity	10 % to 90 % RH, 20 % to 80 % RH for film scanning without condensation formation
Power Requirements		Supplied via USB port (No external adapter required)
Power Consumption		In operation: 2.5 W maximum, Stand-by: 1.5 W *6, Suspend: 11 mwatts *6
Exterior Dimensions (W) x (D) x (H)		292 x 409 x 44 mm (11.5 x 16.1 x 1.8 in.)
Weight		Approximately 2.1 kg (4.6 lbs.)*7

*1 Optical Resolution represents the maximum sampling rate based on ISO 14473.

*2 For the document types other than films, the resolution is up to 4800 x 4800 dpi.

*3 For film scanning only.

*4 The fastest speed in Hi-Speed USB mode on Windows PC. Transfer time is not included. Scanning speed varies according to the document types, scan settings, or specifications of the computer.

*5 35 mm slides are not supported.

*6 USB connection to PC.

*7 Film adapter unit weight is included.

- Specifications are subject to change without notice.

Model Name: K10337 (CanoScan LiDE 700F)

CANON U.S.A. INC.
One Canon Plaza, Lake Success, NY 11042 U.S.A.

CANON AUSTRALIA PTY LTD
1 Thomas Holt Drive, North Ryde, Sydney N.S.W. 2113, Australia

CANON NEW ZEALAND LIMITED
Akoranga Business Park, Akoranga Drive, Northcote, Auckland, New Zealand