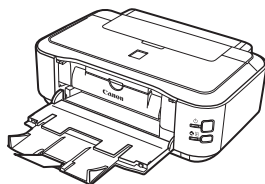




Canon Inkjet Premium Photo Printer  
**PIXMA iP4820** series



# Getting Started

## Read Me First

### Symbols Used in This Document



Prohibited actions.



Instructions including important information.

- In this guide, Windows 7 operating system is referred to as Windows 7 and Windows Vista operating system as Windows Vista.
- In this guide, the screens are based on Windows 7 Home Premium and Mac OS X v.10.6.x. (Unless noted otherwise, the screens are those of Windows 7.)



**1** Preparation ..... P.1



**2** Install the Print Head ..... P.3



**3** Install the Ink Tanks ..... P.6



**4** Install the Software ..... P.8



**5** Load Paper ..... P.13

**6** Try Using the Printer ..... P.16  
Print Photos from a Computer ..... P.17

**7** Specifications ..... P.18



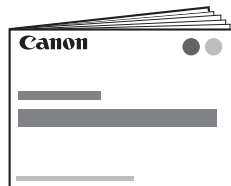
This printer contains both printed manuals and on-screen manuals to be viewed on a computer.  
The on-screen manuals are included on the **Setup CD-ROM** and are installed during the software installation.



Printed Manual



On-Screen Manuals



## Getting Started (this manual)

Describes how to set up and use your printer. Introduces the printer and its functions, the included manuals and application software.



### Basic Guide

Describes basic operations and media, and gives an introduction to other functions available.



### Advanced Guide

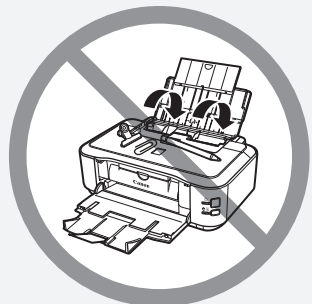
Describes various operating procedures to make full use of printer.



### Troubleshooting

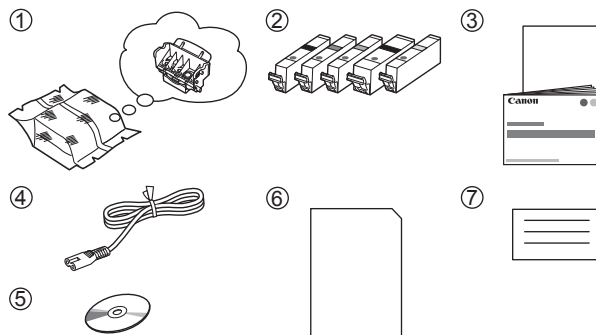
Describes troubleshooting tips for problems you may encounter when using the printer.

# 1 Preparation



- ▶ Do not install the printer where an object may fall on it. In addition, do not place any object on the top of the printer. It may fall into the printer when opening covers, resulting in malfunction.

1



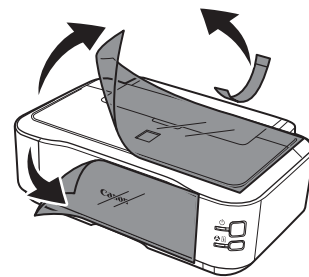
Make sure all the following items are supplied.

1. Print Head
2. Ink tanks (5: BK, M, C, PGBK, Y)
3. Manuals
4. Power cord
5. Setup CD-ROM (containing the drivers, applications and on-screen manuals)
6. Matte Photo Paper MP-101 (for Automatic Print Head Alignment)
7. Other documents



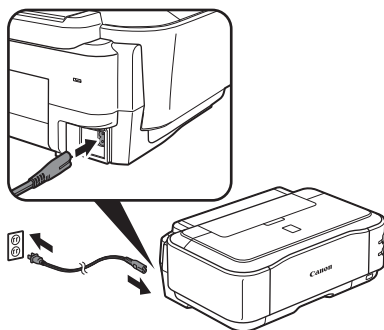
- A USB cable is necessary to connect the printer with your computer.

2



Remove all orange tape and protective materials from the inside and outside of the printer.

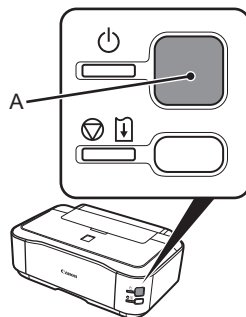
3



Insert the power cord into the connector on the printer and into the wall outlet firmly.

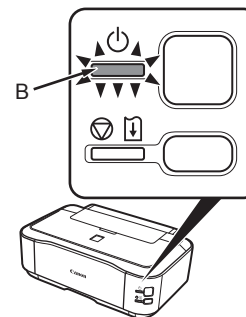
- Do NOT connect the USB cable at this stage.

4



Press the **ON** button (A) to turn on the printer.

5



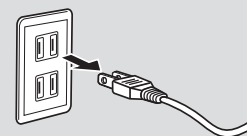
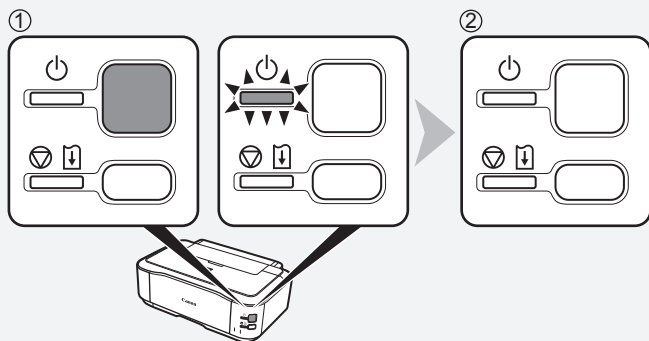
Make sure that the **POWER** lamp (B) lights green.

## When it is necessary to turn off the printer

Be sure to follow the procedure below.

1. Press the **ON** button to turn off the printer.
2. Make sure that the **POWER** lamp is not lit.

It may take up to 35 seconds until the printer turns off.



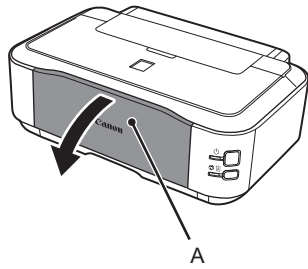
- When removing the power plug, make sure that the **POWER** lamp is not lit before removing the plug. Removing the power plug while the **POWER** lamp lights up or flashes may cause drying and clogging of the Print Head, resulting in poor printing.



- The specification of the power cord differs for each country or region.

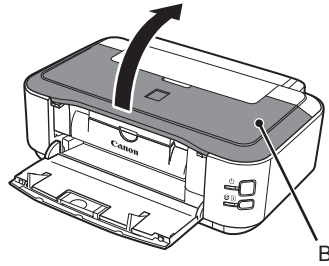
## 2 Install the Print Head

1



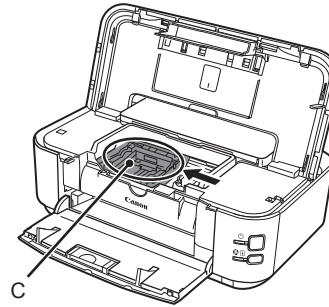
Open the Paper Output Tray (A).

2



Open the Top Cover (B).

3

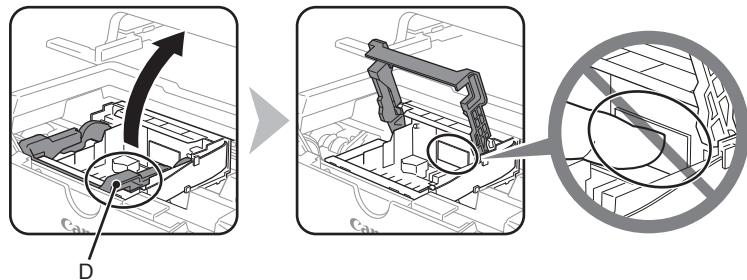


The Print Head Holder (C) moves to the installation position.

If the Print Head Holder does not move, make sure that the printer is turned on.

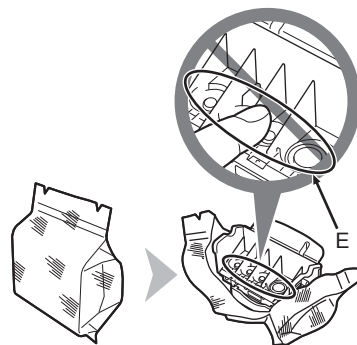


4



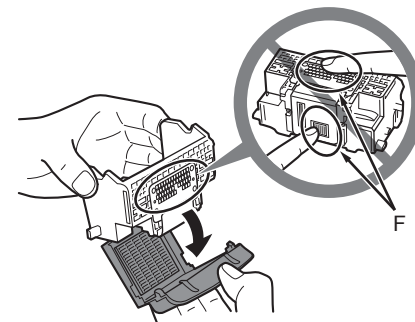
Firmly lift the part (D) of the Print Head Lock Lever in the Print Head Holder until it stops.

5



Remove the Print Head from the silver package.

6

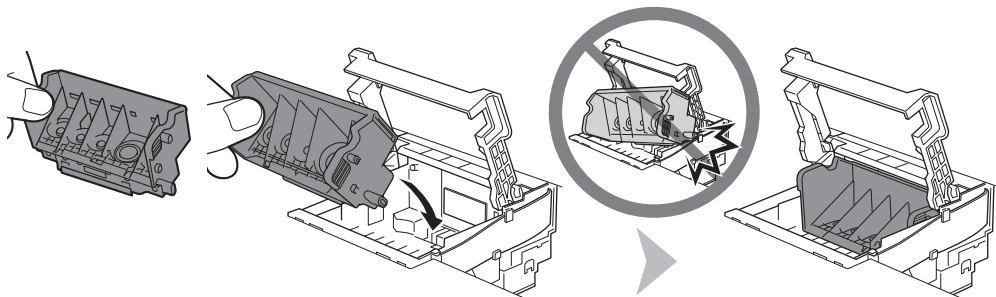


Remove the orange protective cap.



- Do not touch the inside (E) or metal parts (F) of the Print Head. The printer may not print properly if you touch them.
- There may be some ink on the inside of the bag the Print Head comes in, or the inside of the protective cap - this has no effect on print quality. Be careful not to get ink on yourself when handling these items.

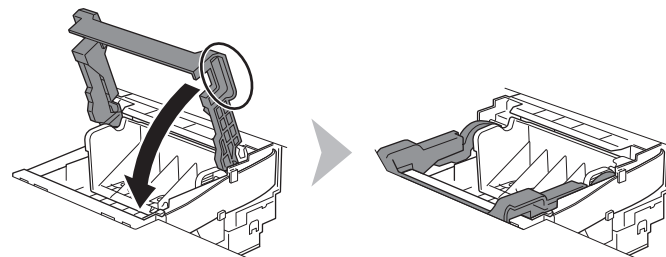
7



Tilt the Print Head forward and set it in place as shown.

- ▶ • Do not knock the Print Head against the sides of the holder.

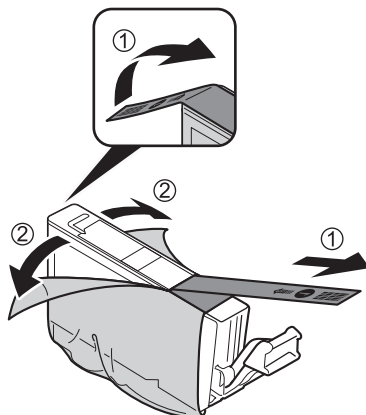
8



Hold the Print Head Lock Lever firmly and lower it completely.

- ▶ • Once you have installed the Print Head, do not remove it unnecessarily.

## 1

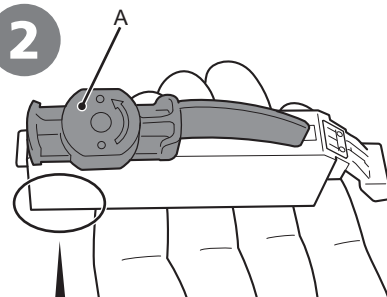


1. Remove the orange tape completely.
2. Remove the protective film completely.



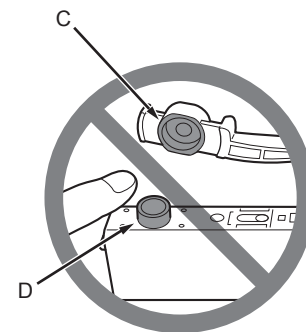
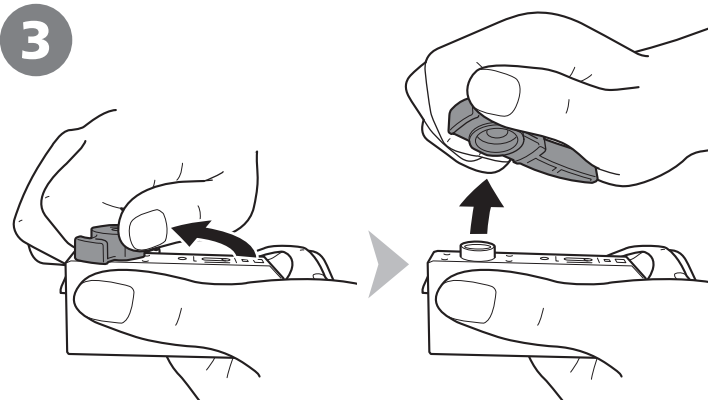
- Handle the ink tanks carefully. Do not drop or apply excessive pressure to them.
- Be sure to use the supplied ink tanks.
- If the orange tape remains on the L-shape air hole, ink may splash or the printer may not print properly.
- If you push the sides of the ink tank with the L-shape air hole blocked, ink may splash.

## 2



Hold the ink tank with the orange protective cap (A) pointing up while being careful not to block the L-shape air hole (B).

## 3



Hold the ink tank by its sides and slowly twist the orange protective cap 90 degrees horizontally to remove it off.

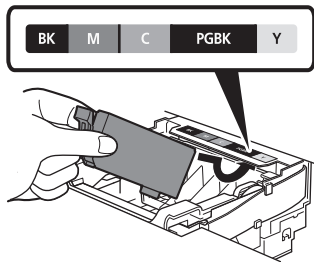
Do not push the sides of the ink tank.



- Do not touch the inside (C) of the orange protective cap or the open ink port (D). The ink may stain your hands if you touch them.



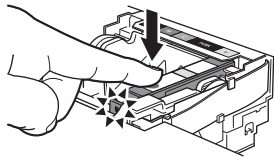
4



Tilt the ink tank, then insert it under the label and against the back end of the slot.

Make sure that the color of the label matches the ink tank.

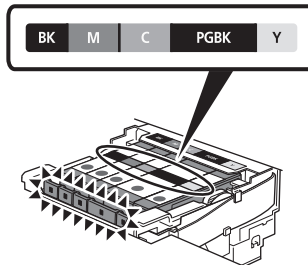
5



Press the **PUSH** mark on the ink tank firmly until it clicks.

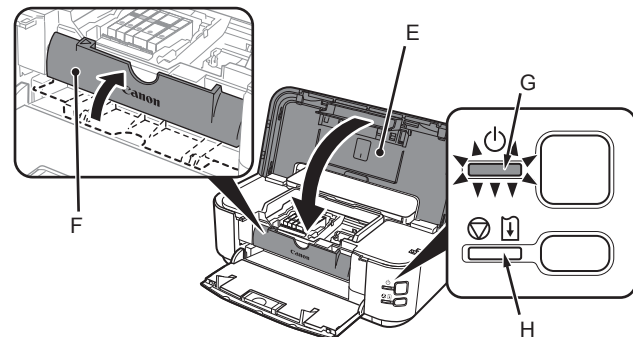
When the installation is completed properly, the **Ink** lamp lights red.

6



Install all the other ink tanks in the same way according to the color order indicated on the label.

7



Close the Top Cover (E).

Make sure the Inner Cover (F) is closed.



- The **POWER** lamp (green) (G) flashes for about 5 minutes, then stays lit. Wait until the lamp stays lit and go to the next step.



- If the **Alarm** lamp (H) flashes orange, make sure that the Print Head and the ink tanks are correctly installed.

### Do not connect the USB cable yet.

- To use the printer by connecting it to a computer, software including the drivers needs to be copied (installed) to the computer's hard disk. The installation process takes about 20 minutes. (The installation time varies depending on the computer environment or the number of application software to be installed.)

- ▶ • Quit all applications before installation.
- Log on as the administrator (or a member of the Administrators group).

#### Windows

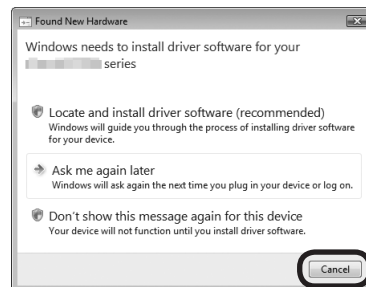
- If you connect the printer via USB cable before installing the software:

##### For Windows 7

1. Remove the USB cable connected to your computer.
2. Proceed to ① on page 9.

##### For Windows Vista/Windows XP

This dialog box may appear.



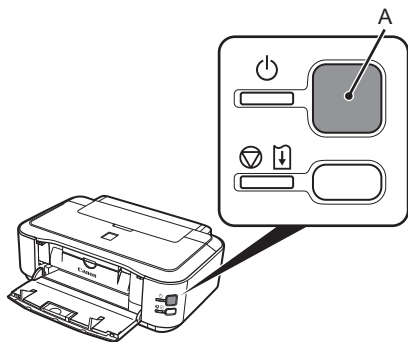
1. Remove the USB cable connected to your computer.  
If the dialog box closes, proceed to ① on page 9.
2. Click **Cancel**.
3. Proceed to ① on page 9.

#### Windows

- Easy-WebPrint EX

Easy-WebPrint EX is Web print software that is installed on the computer when installing the supplied software. Internet Explorer 7 or later is required to use this software. An Internet connection is required for installation.

1



Press the **ON** button (A) to **TURN OFF** THE PRINTER.

2



Turn on the computer, then insert the **Setup CD-ROM** into the CD-ROM drive.

If you are using Windows, the setup program starts automatically.

#### **For Windows**

- If the program does not start automatically, double-click the CD-ROM icon in **Computer** or **My Computer**, then double-click **MSETUP4.EXE**.

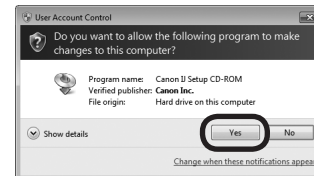
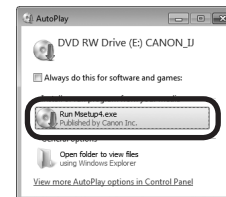
# Windows

3

## Windows 7/Windows Vista

Windows XP →

4



Click **Run Msetup4.exe** on the **AutoPlay** screen, then click **Yes** or **Continue** on the **User Account Control** dialog box.

If the **User Account Control** dialog box reappears in following steps, click **Yes** or **Continue**.

# Macintosh

3



Double-click the **Setup** icon of the CD-ROM folder to proceed to the following screen. Enter your administrator name and password, then click **OK**.

If the CD-ROM folder does not open automatically, double-click the CD-ROM icon on the desktop.

If you do not know your administrator name or password, click the help button, then follow the on-screen instructions.

4



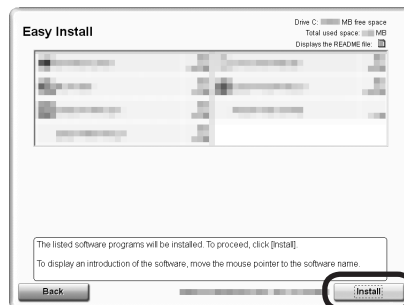
Click **Easy Install**.

The drivers, application software, and on-screen manuals are installed.



- If you want to select particular items to install, click **Custom Install**.

5

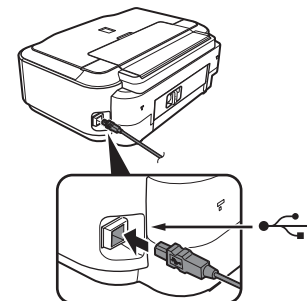


Click **Install**.

Follow any on-screen instructions to proceed with the software installation.

## Important Information for the Installation

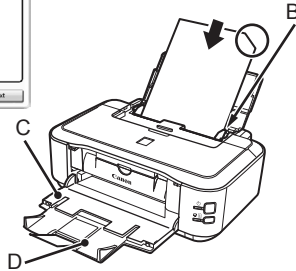
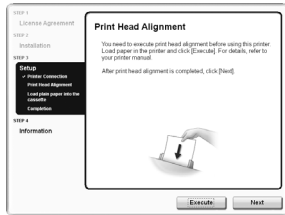
### □ USB Port



When the **Printer Connection** screen appears, connect the printer to the computer with a USB cable.  
After connecting the cable, **TURN ON THE PRINTER**.

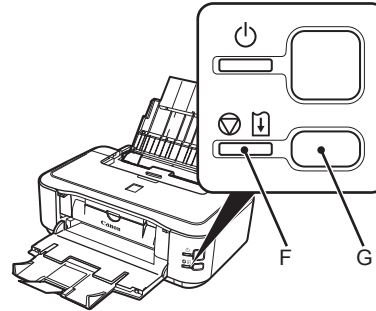
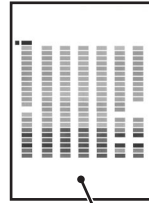


## □ Print Head Alignment



Load a sheet of supplied specialty paper for Print Head Alignment (Matte Photo Paper MP-101) in the Rear Tray (B) and click **Execute**. For details, refer from ③ in "5 Load Paper" on page 15.

Make sure that the Paper Output Tray (C) and Output Tray Extension (D) are opened.



When the blue and black pattern (E) shown is printed, Print Head Alignment is now complete.

In Windows, click **Next** on the **Print Head Alignment** screen.

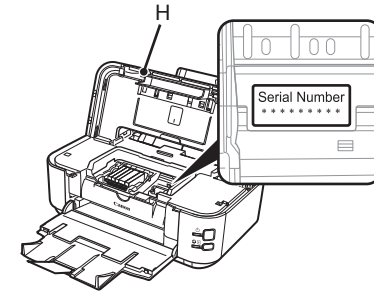


- Wait until the pattern printing ends (about 5 minutes).



- If the **Alarm** lamp (orange) (F) flashes, press the **RESUME/CANCEL** button (G) on the printer to clear the error, then click **Next**. After the installation is complete, perform Print Head Alignment by referring to "When Printing Becomes Faint or Colors Are Incorrect" in the on-screen manual: **Basic Guide**.

## □ Necessary Information for the User Registration



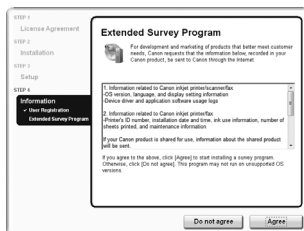
When the serial number is not displayed on the registration screen automatically, input the serial number located inside the printer (as shown in the illustration).



- If the power is on, the Print Head Holder will move when the Top Cover (H) is opened.

## Important Information for the Installation

- If the **Extended Survey Program** screen appears



If you can agree to Extended Survey Program, click **Agree**.

If you click **Do not agree**, the Extended Survey Program will not be installed. (This has no effect on the printer's functionality.)

6



Click **Exit** to complete the installation.

7



For Windows  
Solution Menu EX starts.

For Macintosh

Solution Menu EX starts when clicking **OK** in the **Canon Solution Menu EX** dialog.

Remove the **Setup CD-ROM** and keep it in a safe place.

- The buttons displayed on Solution Menu EX may vary depending on the country or region of purchase.

Windows

## Installing the XPS Printer Driver

In Windows 7 and Windows Vista SP1 or later, the XPS Printer Driver can be installed additionally.

To install, perform from ① in "4 Install the Software" on page 9. Click **Custom Install** in ④, then select **XPS Printer Driver** in the **Custom Install** screen.

For details on useful functions of the XPS Printer Driver, refer to the on-screen manual: **Advanced Guide**.

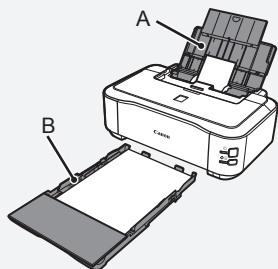
# 5 Load Paper



With the printer, the paper source varies depending on the media type.

## Specialty paper including photo paper

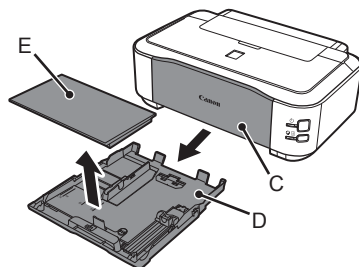
Load paper in the Rear Tray (A).



## Plain paper

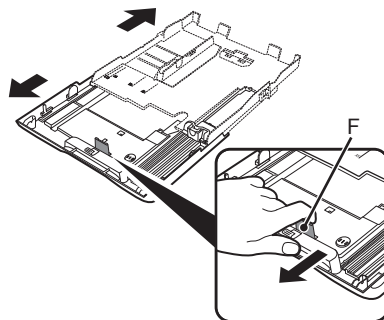
Load paper in the Cassette (B).

1



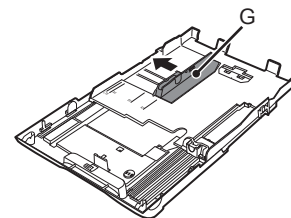
Close the Paper Output Tray (C), pull out the Cassette (D) and remove the Cover (E).

2



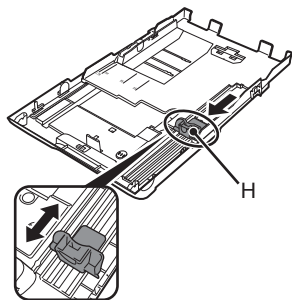
Pull the Tab (F) in the direction of the arrow and extend the Cassette.

3



Move the left Paper Guide (G) to the edge.

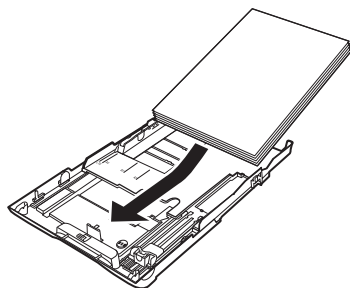
4



Slide the front Paper Guide (H) to align with the actual size of the paper.

The front Paper Guide will click and stop when it aligns with the corresponding mark of paper size.

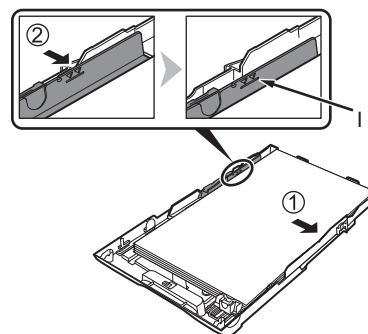
5



Load plain paper.

Load paper with the printing side facing down.

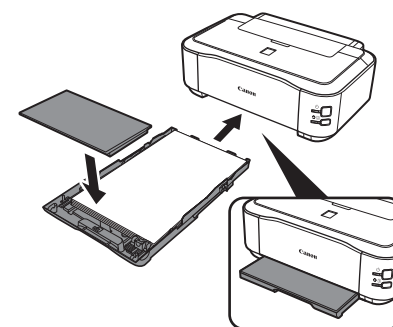
6



Align the paper to the right side of the Cassette (1), and slide the left Paper Guide completely against the left edge of the paper (2).

Make sure that the height of the paper stack does not exceed the line (l).

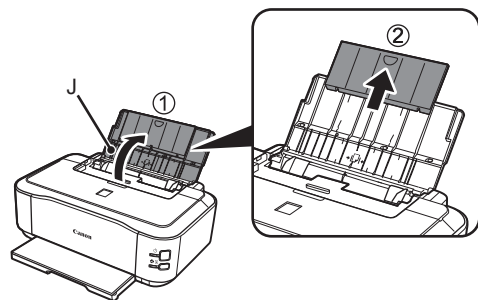
7



Attach the Cover and insert the Cassette into the printer until it clicks into place.

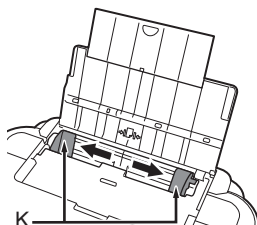


8



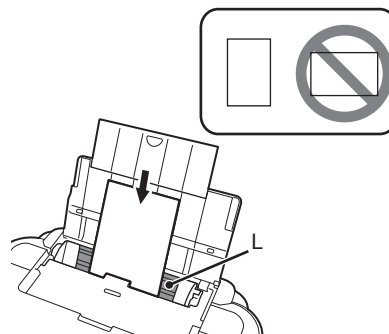
Open the Paper Support (J), and pull it up.

9



Move the Paper Guides (K) to both edges.

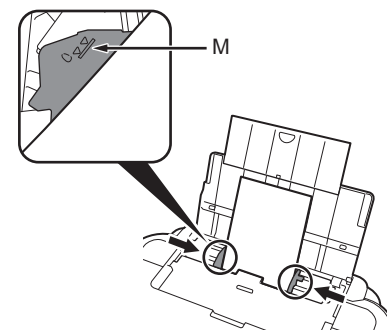
10



Load paper in the center of the Rear Tray (L).

Load paper in portrait orientation with the printing side facing up.

11



Slide the left and right Paper Guides against both edges of the paper.

Make sure that the height of the paper stack does not exceed the line (M).



• For details, refer to the on-screen manual: **Basic Guide**.

Congratulations! Setup is complete.

Proceed to "6 Try Using the Printer".

Various application software are installed on the computer along with the drivers. You can print creative items by correcting/enhancing photos using the application software.

For details on how to use the application software and the printer, refer to the on-screen manual.

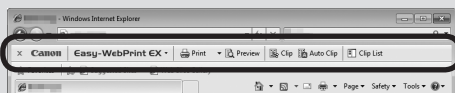


Windows

## Easy-WebPrint EX

Use Easy-WebPrint EX to print web pages in Internet Explorer easily. Some of its features include:

- Printing a web page by reducing its size to fit the paper width automatically without cropping edges.
- Printing only the pages you want by selecting them from preview.
- Printing selected portions of various pages after editing them.



When Easy-WebPrint EX is installed, the Easy-WebPrint EX toolbar appears in Internet Explorer. This toolbar can be used any time while Internet Explorer is running.

For details, refer to the on-screen manual: **Basic Guide.**

## Solution Menu EX

Solution Menu EX is a gateway to functions and information that allow you to make full use of the printer! For example,

- Open the on-screen manual.
- Open various application software.

### How to open the on-screen manual



Click **Help & Settings**, then click this icon to open the on-screen manual.

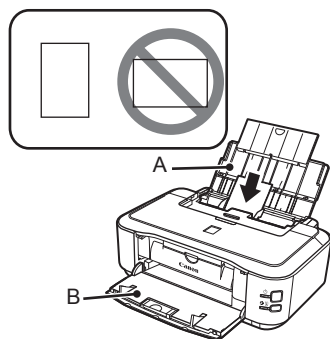
### How to start Solution Menu EX



Click this icon on the desktop (Windows) or on the Dock (Macintosh) to start Solution Menu EX.

For details, refer to the on-screen manual: **Basic Guide.**

1




Load 4" x 6" (10 x 15 cm) photo paper in the Rear Tray (A) in portrait orientation with the printing side facing up. (For details, refer to page 15.)

Make sure that the Paper Output Tray (B) is open.

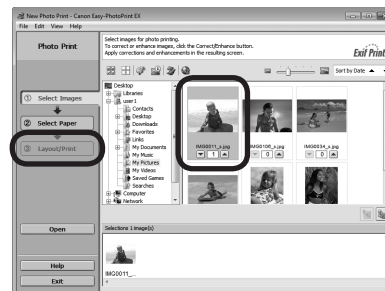
This section explains how to print borderless photos using 4" x 6" (10 x 15 cm) Photo Paper Plus Glossy II.

2



1. To start Solution Menu EX, click the  (Solution Menu EX) icon on the desktop (Windows) or on the Dock (Macintosh).
2. Click **Photo Print**, then click **Photo Print** (C). Easy-PhotoPrint EX starts.

3



Select the image you want to print, then click **Layout/Print**.

When a photo is selected, the number of copies is set to "1".

4



Click **Print**.

If you are using Windows, printing will start.


If you are using Macintosh, click **Print** on the **Print** dialog box to start printing.

For more information, refer to the on-screen manual: **Advanced Guide**.

## General Specifications

Printing resolution (dpi)
9600* (horizontal) X 2400 (vertical) * Ink droplets can be placed with a pitch of 1/9600 inch at minimum.
Interface
USB Port: Hi-Speed USB* Direct Print Port: PictBridge
* A computer that complies with Hi-Speed USB standard is required. Since the Hi-Speed USB interface is fully upwardly compatible with USB 1.1, it can be used at USB 1.1.
Print width
8 inches/203.2 mm (for Borderless Printing: 8.5 inches/216 mm)
Operating environment
Temperature: 5 to 35°C (41 to 95°F) Humidity: 10 to 90% RH (no condensation)
Storage environment
Temperature: 0 to 40°C (32 to 104°F) Humidity: 5 to 95% RH (no condensation)
Power supply
AC 100-240 V, 50/60 Hz
Power consumption
Printing: Approx. 17 W Standby (minimum): Approx. 1.1 W* OFF: Approx. 0.4 W* * USB connection to PC
External dimensions
Approx. 17.0 (W) X 11.7 (D) X 6.0 (H) inches Approx. 431 (W) X 297 (D) X 153 (H) mm * With the Paper Support and Paper Output Tray retracted.
Weight
Approx. 5.7 kg (Approx. 12.6 lb) * With the Print Head and ink tanks installed.
Print Head/Ink
Total 4608 nozzles (PGBK 512 nozzles, Y/DyeBK each 512 nozzles, C/M each 1536 nozzles)

## Minimum System Requirements

 Conform to the operating system's requirements when higher than those given here.	
Windows	Macintosh
Operating System/Processor/RAM	
Windows 7 1 GHz or faster 32-bit (x86) or 64-bit (x64) processor 1 GB (32-bit)/2 GB (64-bit)	Mac OS X v.10.6 Intel processor 1 GB
Windows Vista, Vista SP1, Vista SP2 1 GHz processor 512 MB	Mac OS X v.10.5 Intel processor, PowerPC G5, PowerPC G4 (867 MHz or faster) 512 MB
Windows XP SP2, SP3 300 MHz processor 128 MB	Mac OS X v.10.4.11 Intel processor, PowerPC G5, PowerPC G4, PowerPC G3 256 MB
Browser	
Internet Explorer 6 or later	Safari 3
Hard Disk Space	
1.5 GB Note: For bundled software installation. The necessary amount of hard disk space may be changed without notice.	1.5 GB Note: For bundled software installation. The necessary amount of hard disk space may be changed without notice.
CD-ROM Drive	
Required	Required
Display	
SVGA 800 x 600	XGA 1024 x 768
<ul style="list-style-type: none"> <li>Windows: Operation can only be guaranteed on a PC with Windows 7, Windows Vista or Windows XP pre-installed.</li> <li>Windows: Uninstall software bundled with the Canon inkjet printer before upgrading from Windows Vista to Windows 7, then, install the bundled software again.</li> <li>Macintosh: Hard Disk must be formatted as Mac OS Extended (Journaled) or Mac OS Extended.</li> <li>Macintosh: After upgrading from Mac OS X v.10.5 or lower to Mac OS X v.10.6, install software bundled with the Canon inkjet printer.</li> <li>Internet Explorer 7 or later is required to install Easy-WebPrint EX. For Windows use only.</li> </ul>	

Specifications are subject to change without notice.

### About Consumables

Consumables (ink tanks / FINE Cartridges) are available for 5 years after production has stopped.

# Getting Help from Canon

Email Tech Support — [www.canontechsupport.com](http://www.canontechsupport.com)

Please note, from there you will need to select your product, then click on the "Support by Email" link under Tech Support.

## Toll-Free Tech Support— 1-800-OK-CANON

This option provides live telephone technical support, free of service charges, Monday-Friday (excluding holidays), **during the warranty period**.

Telephone Device for the Deaf (TDD) support is available at 1-866-251-3752.

## Ordering Information

The following ink tanks are compatible with this printer.



### Order #

CLI-226BK	4546B001
CLI-226M	4548B001
CLI-226C	4547B001
PGI-225PGBK	4530B001
CLI-226Y	4549B001

Call 1-800-OK-CANON to locate a dealer near you, or visit the Canon online store at [www.shop.usa.canon.com](http://www.shop.usa.canon.com)

CANON U.S.A. INC.

One Canon Plaza, Lake Success, NY 11042 U.S.A.

[www.usa.canon.com](http://www.usa.canon.com)

- Microsoft is a registered trademark of Microsoft Corporation.
- Windows is a trademark or registered trademark of Microsoft Corporation in the U.S. and/or other countries.
- Windows Vista is a trademark or registered trademark of Microsoft Corporation in the U.S. and/or other countries.
- Internet Explorer is a trademark or registered trademark of Microsoft Corporation in the U.S. and/or other countries.
- Macintosh and Mac are trademarks of Apple Inc., registered in the U.S. and other countries.