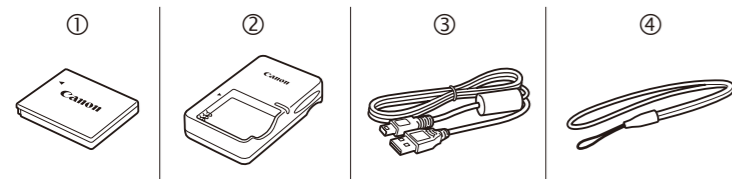




HD Camcorder
VIXIA mini Getting Started

Package Contents

- HD Camcorder VIXIA mini
- NB-4L Battery Pack [①]
- CB-2LV Battery Charger [②]
(CB-2LVE including power cord, in Asia)
- IFC-400PCU USB Cable [③]
- WS-DC11 Wrist Strap [④]
- VIXIA mini CD-ROM



1 Installing the Camcorder's Instruction Manual (PDF File)

This guide only introduces the most basic functions of the camcorder to get you started. To learn more about your camcorder, to read important handling precautions and to consult the troubleshooting section if an error message is displayed, be sure to read the full-version Instruction Manual (PDF file).

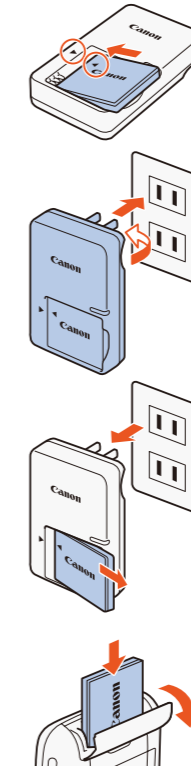
You can install the PDF Instruction Manual on a computer using the following procedure. The most up-to-date version of the PDF file is also available for download on your local Canon Web site. This may be more convenient if you prefer to have the PDF file available on your smartphone or tablet.

1. Turn on the computer.
2. Insert the VIXIA mini CD-ROM into the computer's disc drive.
3. **Windows:** Use Windows Explorer to open the drive into which you inserted the CD-ROM.
Mac OS: Use Finder and click the CD-ROM icon.
4. Click/Double-click the **Disc_Setup** icon.
5. In the installer panel, click [Instruction Manual of the Camcorder] and select your language.
 - Windows users: If a User Account Control dialog box appears, follow the instructions.
6. When the installation is complete, click [OK], then [Exit].
 - The installer will save the camcorder's Instruction Manual (PDF file) on the computer and will create a shortcut icon on the desktop for easy access.

2 Charging and Installing the Battery Pack

Charge the supplied battery pack in advance, using the supplied battery charger. Fully charging the supplied battery pack will take about 1 hour 30 minutes.

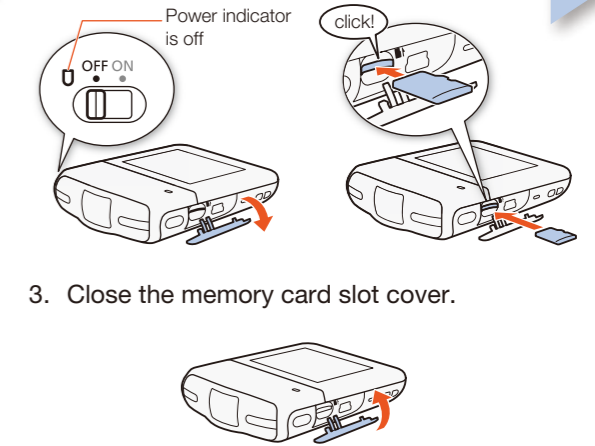
1. Attach the battery pack to the battery charger, aligning the triangle marks.
2. Turn out the fold-in plug and plug the battery charger into a power outlet.
 - For Asia only: Connect the power cord to the battery charger and plug the other end into a power outlet.
 - The CHARGE indicator lights up in orange. When the CHARGE indicator on the battery charger turns green, the battery pack is fully charged.
3. Unplug the battery charger and remove the battery pack. (In Asia, unplug and disconnect the power cord.)
4. Open the camcorder's battery compartment cover, insert the battery pack and close the cover.



3 Inserting a Memory Card

You can use commercially available microSD, microSDHC and microSDXC cards with this camcorder. We recommend using memory cards rated SD Speed Class 10. Initialize a memory card using the [Complete Initialization] option before using it with the camcorder for the first time ([PDF](#) **Initializing a Memory Card**).

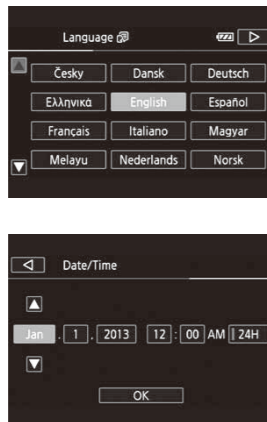
1. Make sure the camcorder is off.
2. Open the memory card slot cover and insert the memory card with the label side facing up.
 - Power indicator is off
 - click!
3. Close the memory card slot cover.



4 Basic Setup

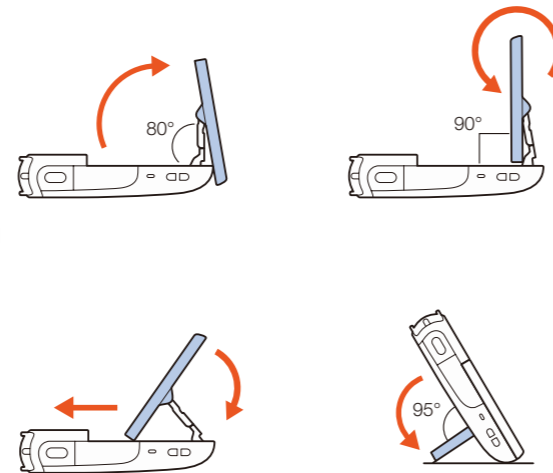
The first time you turn on the camcorder, you will be guided by the camcorder's basic setup screens to select the camcorder's language and set the date and time.

1. Turn on the camcorder.
2. Touch the desired language for onscreen displays and then touch [▷].
3. Touch the desired date/time format and then touch [▷].
4. Set the date and time.
 - Touch a field you want to change and touch [▲] or [▼] to change. Repeat as necessary.
 - Touch [24H] to use 24-hour clock or leave untouched to use AM/PM.
5. Touch [OK] to complete the basic setup and close the setup screen.



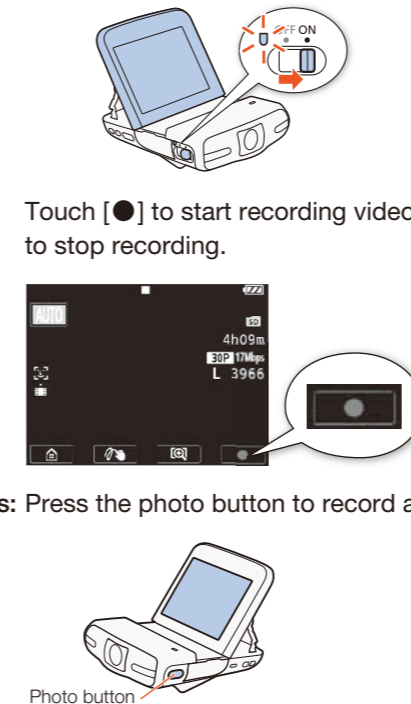
5 Adjusting the Camcorder

You can adjust the angle of the articulated LCD panel and the built-in stand. Change the position of the camcorder as necessary to match your shooting style.



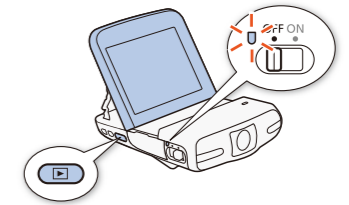
6 Shooting Video and Taking Photos

1. Turn on the camcorder.
2. **Video:** Touch [●] to start recording video. Touch [■] to stop recording.
 - Photos: Press the photo button to record a photo.
3. When you finish recording, turn off the camcorder.



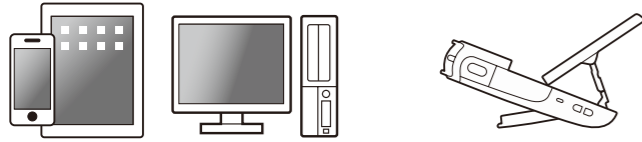
7 Playing Back Video and Viewing Photos

1. Press the [▶] button.
 - The [▶] index screen will open. To view photos, touch [📷] ▶ [📷] Photo Playback] to open the [📷] index screen.
2. Touch the thumbnail of the scene or photo you want to play back.
 - During playback, touch the scene to display the playback controls.
- To delete recordings**
From the index screen:
 1. Touch [Edit] ▶ [Delete].
 2. Select whether to delete all the scenes/photos in the same folder, selected scenes/photos, or all scenes/photos.
 - To select individual recordings: touch all the scenes/photos you wish to delete to mark them with a [☑], then touch [OK].
 3. Touch [Yes] ▶ [OK].



Wi-Fi Functions

The camcorder features a number of convenient Wi-Fi functions that will allow you to use it in combination with Wi-Fi enabled smartphones and tablets. For example, you can use a smartphone or tablet to control the camcorder remotely while recording or to upload recordings to the Web.



1. If necessary, install the required app on the smartphone or tablet.
2. Select the desired Wi-Fi function on the camcorder.
3. Wirelessly connect the device to the VIXIA mini.

Note: The necessary procedure may differ according to the Wi-Fi function you wish to use. For details, be sure to refer to the PDF Instruction Manual ([PDF](#) **Wi-Fi Functions**).

Optional Accessories

Canon offers a wide range of optional accessories for your camcorder. For details, be sure to refer to the PDF Instruction Manual ([PDF](#) **Optional Accessories**).

Use of genuine Canon accessories is recommended.

This product is designed to achieve excellent performance when used with genuine Canon accessories. Canon shall not be liable for any damage to this product and/or accidents such as fire, etc., caused by the malfunction of non-genuine Canon accessories (e.g., a leakage and/or explosion of a battery pack). Please note that this warranty does not apply to repairs arising out of the malfunction of non-genuine Canon accessories, although you may request such repairs on a chargeable basis.

This mark identifies genuine Canon video accessories. When you use Canon video equipment, we recommend Canon-brand accessories or products bearing the same mark.



Important Usage Instructions

COPYRIGHT WARNING:

Unauthorized recording of copyrighted materials may infringe on the rights of copyright owners and be contrary to copyright laws.

FCC/IC NOTICE

HD Camcorder, VIXIA mini systems

This device complies with Part 15 of the FCC Rules. Operation is subject to the following two conditions: (1) This device may not cause harmful interference, and (2) this device must accept any interference received, including interference that may cause undesired operation.

Note: This equipment has been tested and found to comply with the limits for class B digital device, pursuant to Part 15 of the FCC Rules. These limits are designed to provide reasonable protection against harmful interference in a residential installation. This equipment generates, uses and can radiate radio frequency energy and, if not installed and use in accordance with the instructions, may cause harmful interference to radio communications. However, there is no guarantee that interference will not occur in a particular installation. If this equipment does cause harmful interference to radio or television reception, which can be determined by turning the equipment off and on, the user is encouraged to try to correct the interference by one or more of the following measures:

- Reorient or relocate the receiving antenna.
- Increase the separation between the equipment and receiver.
- Connect the equipment into an outlet on a circuit different from that to which the receiver is connected.
- Consult the dealer or an experienced radio/TV technician for help.

Use of shielded cable is required to comply with class B limits in Subpart B of Part 15 of FCC Rules. Do not make any changes or modifications to the equipment unless otherwise specified in the manual. If such changes or modifications should be made, you could be required to stop operation of the equipment.

Model ID0032 (including WLAN Module Model RF401, FCC ID: AZD401)

This device complies with Industry Canada license-exempt RSS standard(s). Operation is subject to the following two conditions: (1) this device may not cause interference, and (2) this device must accept any interference, including interference that may cause undesired operation of the device.

This transmitter must not be co-located or operated in conjunction with any other antenna or transmitter.

The available scientific evidence does not show that any health problems are associated with using low-power wireless devices. There is no proof, however, that these low power wireless devices are absolutely safe. Low-power wireless devices emit low levels of radio frequency energy (RF) in the microwave range while being used. Whereas high levels of RF can produce health effects (by heating tissue), exposure to low-level RF that does not produce heating effects causes no known adverse health effects. Many studies of low-level RF exposures have not found any biological effects. Some studies have suggested that some biological effects might occur, but such findings have not been confirmed by additional research. This model has been tested and found to comply with FCC/IC radiation exposure limits set forth for an uncontrolled equipment and meets the FCC radio frequency (RF) Exposure Guidelines in Supplement C to OET65 and RSS-102 of the IC radio frequency (RF) Exposure rules.

Canon U.S.A., Inc.
One Canon Park, Melville, NY 11747, USA
Tel No. 1-800-OK-CANON (1-800-652-2666)

Battery Charger CB-2LV

This power unit is intended to be correctly orientated in a vertical or floor mount position.

IMPORTANT SAFETY INSTRUCTIONS – SAVE THESE INSTRUCTIONS.

DANGER – TO REDUCE THE RISK OF FIRE OR ELECTRIC SHOCK, CAREFULLY FOLLOW THESE INSTRUCTIONS.

For connection to a supply not in the U.S.A., use an attachment plug adapter of the proper configuration for the power outlet, if needed.

This battery charger is for exclusive use with Battery Pack NB-4L. There is a danger of explosion if other battery packs are used.

CAUTION

RISK OF EXPLOSION IF BATTERY IS REPLACED BY AN INCORRECT TYPE. DISPOSE OF USED BATTERIES ACCORDING TO LOCAL REGULATION.

USA and Canada only:

The Lithium ion/polymer battery that powers the product is recyclable. Please call 1-800-8-BATTERY for information on how to recycle this battery.



Precautions About the Battery Pack

DANGER!

Treat the battery pack with care.

- Keep it away from fire (or it might explode).
- Do not expose the battery pack to temperature higher than 60 °C (140 °F). Do not leave it near a heater or inside a car in hot weather.
- Do not try to disassemble or modify it.
- Do not drop it or subject it to shocks.
- Do not get it wet.

REGIONS OF USE

The VIXIA mini is in compliance (as of June 2013) with the radio signal regulations of the regions listed below. For details on other regions where it can be used, make inquiries with the contacts listed inside the blue frame at the bottom of this page.

REGIONS

Canada, Hong Kong S.A.R., South Korea, USA

Model

ID0032: VIXIA mini

Important Note About the Memory Card

- Observe the following precautions while the ACCESS indicator is on or flashing. Failing to do so may result in permanent data loss or damage to the memory card.
 - Do not remove the memory card.
 - Do not disconnect the camcorder's power source or turn off the camcorder.
 - Do not press the button.

Trademark Acknowledgements

- microSD, microSDHC and microSDXC Logos are trademarks of SD-3C, LLC.
- Microsoft and Windows are trademarks or registered trademarks of Microsoft Corporation in the United States and/or other countries.
- Mac OS is a trademark of Apple Inc., registered in the U.S. and other countries.
- Wi-Fi is a registered trademark of the Wi-Fi Alliance.
- Wi-Fi Certified, WPA, WPA2, and the Wi-Fi Certified logo are trademarks of the Wi-Fi Alliance.
- Other names and products not mentioned above may be trademarks or registered trademarks of their respective companies.
- This device incorporates exFAT technology licensed from Microsoft.
- "Full HD 1080" refers to Canon camcorders compliant with high-definition video composed of 1,080 vertical pixels (scanning lines).
- This product is licensed under AT&T patents for the MPEG-4 standard and may be used for encoding MPEG-4 compliant video and/or decoding MPEG-4 compliant video that was encoded only (1) for a personal and non-commercial purpose or (2) by a video provider licensed under the AT&T patents to provide MPEG-4 compliant video. No license is granted or implied for any other use for MPEG-4 standard.

FULL HD
1080

Canon

Canon Inc. 30-2 Shimomaruko 3-chome, Ohta-ku, Tokyo 146-8501, JAPAN

USA

CANON U.S.A., INC. NEW JERSEY OFFICE
100 Jamesburg Road, Jamesburg, NJ 08831 USA

CANON U.S.A., INC. CHICAGO OFFICE
100 Park Blvd., Itasca, IL 60143 USA

CANON U.S.A., INC. LOS ANGELES OFFICE
15955 Alton Parkway, Irvine, CA 92618 USA

CANON U.S.A., INC. HONOLULU OFFICE
210 Ward Avenue, Suite 200, Honolulu, HI 96814 USA

❖ If you have any questions, call the Canon U.S.A. Information Center toll-free at 1-800-828-4040 (USA only).

CANADA

CANON CANADA INC.
6390 Dixie Road, Mississauga, ON L5T 1P7

❖ If you have any questions, call the Canon Canada Information Center toll-free (in Canada only) at 1-800-OK-CANON (1-800-652-2666).

❖ Si vous avez des questions, veuillez téléphoner 1-800-OK-CANON (1-800-652-2666, sans frais au Canada seulement).

MÉXICO

CANON MEXICANA, S DE RL DE CV
Blvd. Manuel Ávila Camacho No. 138, Piso 17 Col. Lomas de Chapultepec, C.P. 11000 México, D.F., México

CANON U.S.A., INC. NEW JERSEY OFFICE
100 Jamesburg Road, Jamesburg, NJ 08831 USA

CENTRO Y SURAMÉRICA

CANON LATIN AMERICA, INC.
One Canon Park, Melville, NY 11747 USA

ASIA

CANON HONGKONG COMPANY LTD.
19/F, The Metropolis Tower, 10 Metropolis Drive, Hungghom, Kowloon, Hong Kong
Tel: +852 3191 2333, Fax: +852 2428 3963