

# Using imagePROGRAF Media Configuration Tool (Version 7.00 or Higher) (Windows)

---

Version 1.0

Canon Inc.

## Table of Contents

1. About the imagePROGRAF Media Configuration Tool.....	3
2. Updating the Media Information.....	3
2-1. If You Have Installed the Media Configuration Tool.....	3
2-2. If You Are Applying New Media Information Files .....	8
3. Applying a Saved Media Information File On Another Computer .....	14
Important: If you are using custom paper created with an old version of Media Configuration Tool .....	16

## 1. About the imagePROGRAF Media Configuration Tool

In imagePROGRAF printers, the best printer settings are collected together in "media information files" for each paper in order to give the highest quality printing results. Canon provides the media information files for the paper supported by the printer.

You can automatically download media information files from the Canon website and apply the new media information to the printer control panel and printer driver by using the imagePROGRAF Media Configuration Tool (hereinafter Media Configuration Tool).

### <<Important>>

- Administration of media information using the Media Configuration Tool should be performed by the printer administrator.
- A computer that is connected to the Internet is needed in order to download media information files from the website.
- This guide mainly describes how to use the media information files provided by Canon to update the media information in the printer control panel and printer driver. Refer to the User's Guide (electronic manual) of your printer for more details on the other functions of the Media Configuration Tool.

### <Note>

- This version of the Media Configuration Tool can be used shared with all Canon imagePROGRAF series printers.
- The screen that is displayed may differ depending on the model you are using.

## 2. Updating the Media Information

You can apply the media information to the printer control panel and printer driver by using the following procedure.

Immediately after installing the Media Configuration Tool, refer to [2-1. If You Have Installed the Media Configuration Tool](#).

Otherwise, refer to [2-2. If You Are Applying New Media Information Files](#).

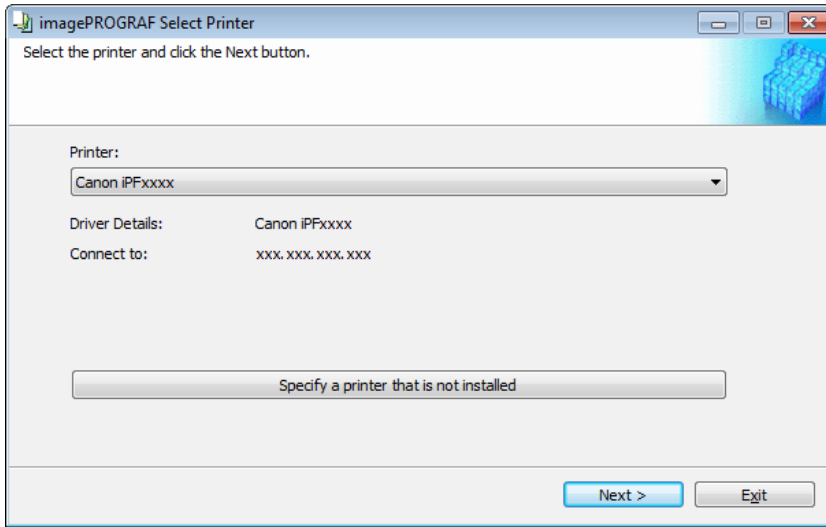
### 2-1. If You Have Installed the Media Configuration Tool

If you are running the Media Configuration Tool for the first time after installing it, you need to configure the media information in the printer control panel and printer driver.

#### <<Important>>

- Always perform this operation after installing the Media Configuration Tool to ensure that printing works correctly.
- This operation also needs to be performed after reinstalling the Media Configuration Tool.
- Do not perform printing on the printer or turn off the printer while you are configuring the media information.

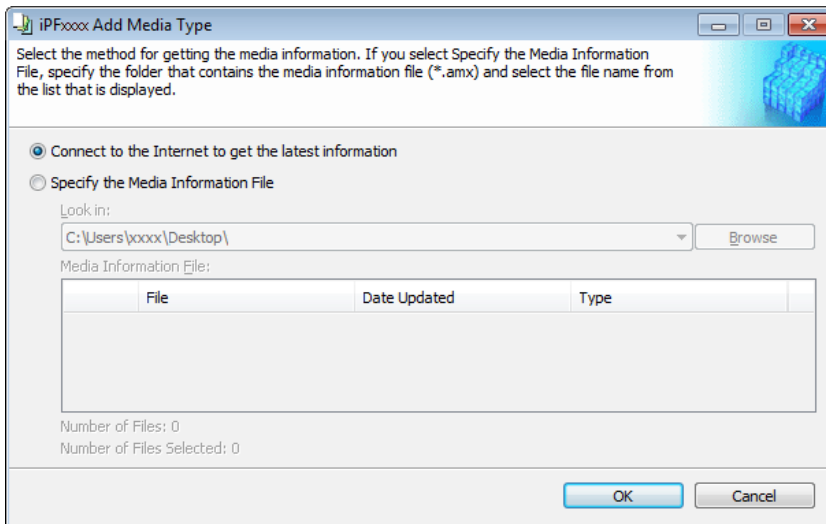
1. From the **Start** menu, select **All Programs > imagePROGRAF Media Configuration Tool > imagePROGRAF Media Configuration Tool**. The Media Configuration Tool runs.
2. The **Select Printer** dialog box is displayed. Select the printer for which to configure the media information, and then click the **Next** button.



3. The **Add Media Type** dialog box is displayed. Make sure that **Connect to the Internet to get the latest information** is selected, and then click the **OK** button.

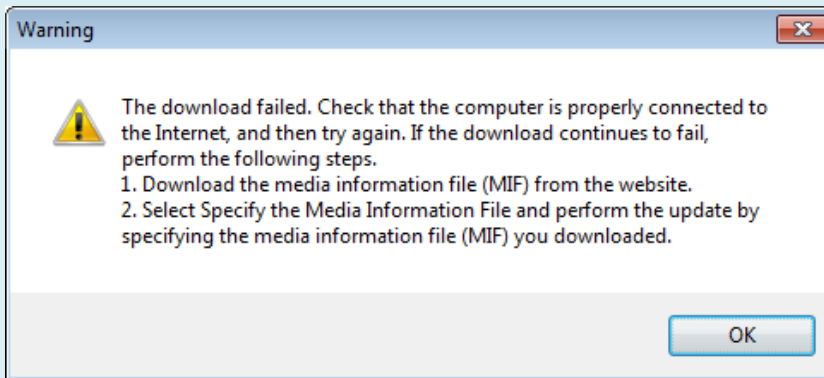
**<Note>**

- If the main window is displayed at this time, it means that the media information has already been updated and the rest of the operation is not needed.



The latest media information file is downloaded from the Internet.

■ If the following message is displayed



If this message is displayed, the media information file could not be downloaded automatically from the Internet. Configure the settings using the following procedure.

(1) Open a web browser on a computer that can access the Internet, and access the Canon website.

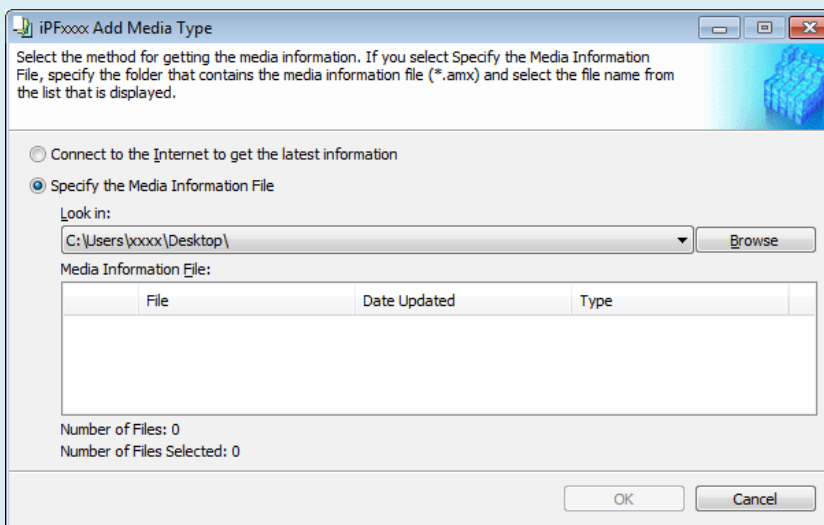
(2) Download the media information file (.amx file) corresponding to the printer you want to update from the Canon website.

<<Important>>

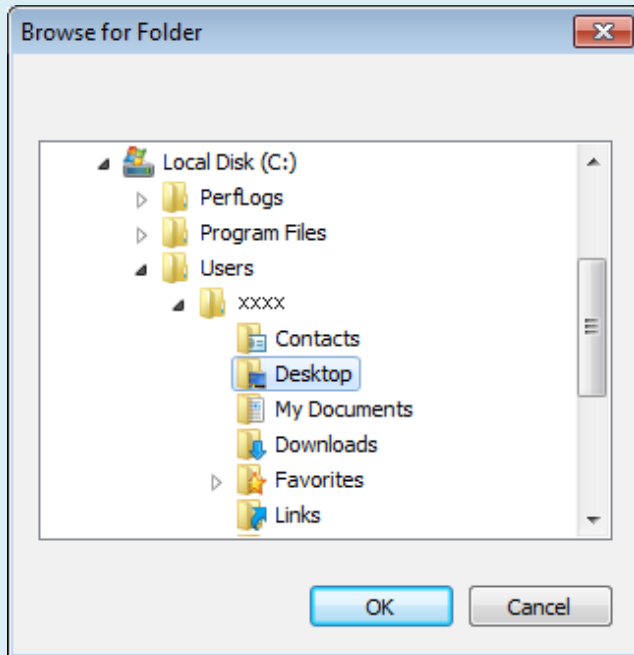
- Download the file that has the .amx extension. Files with the .amf extension cannot be used with this version of the Media Configuration Tool.

(3) Copy the downloaded media information file (.amx file) to the computer where the Media Configuration Tool is installed.

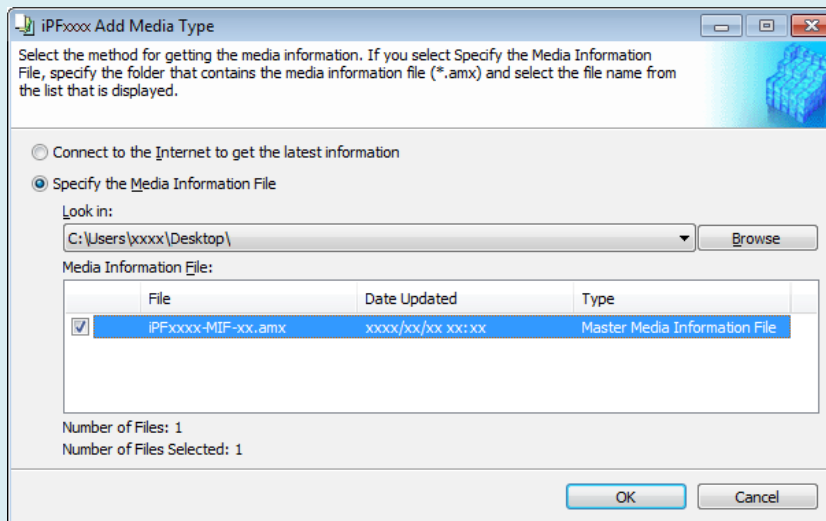
(4) Select **Specify the Media Information File** in the **Add Media Type** dialog box, and then click the **Browse** button.



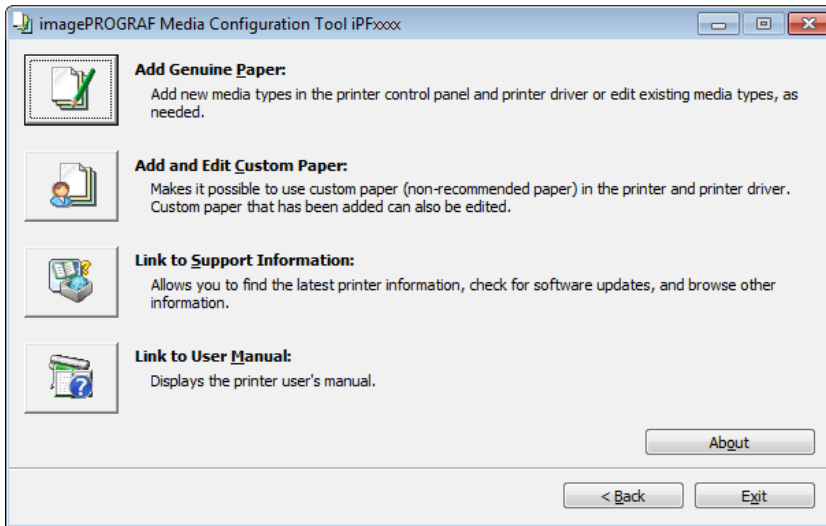
(5) Select the folder that contains the media information file (.amx file), and then click the **OK** button.



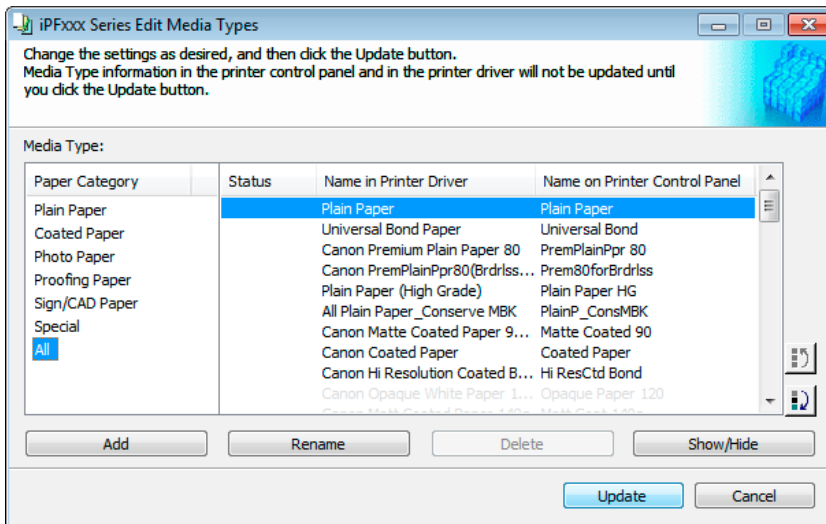
(6) The names of the media information files contained in the selected folder are displayed in the **Media Information File** field in the **Add Media Type** dialog box. Select the check box for the media information file name and click the **OK** button.



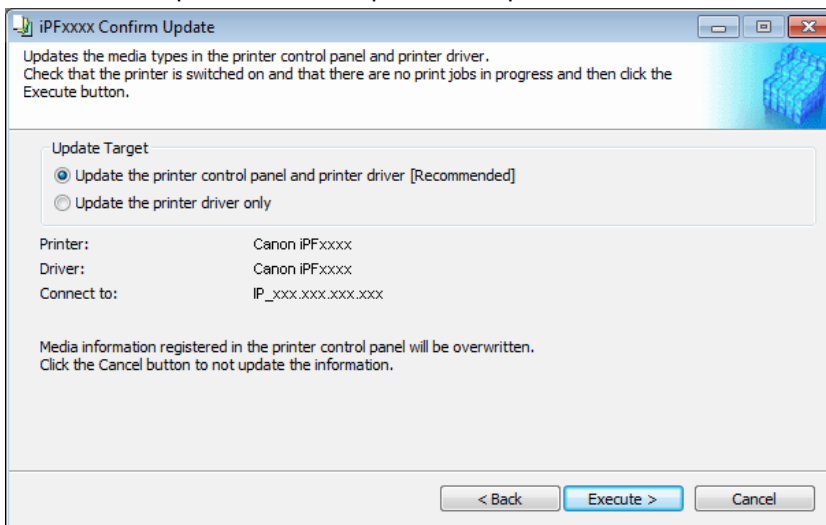
4. The Media Configuration Tool main window is displayed. Click the **Add Genuine Paper** button.



5. In the **Edit Media Types** dialog box, click the **Update** button.



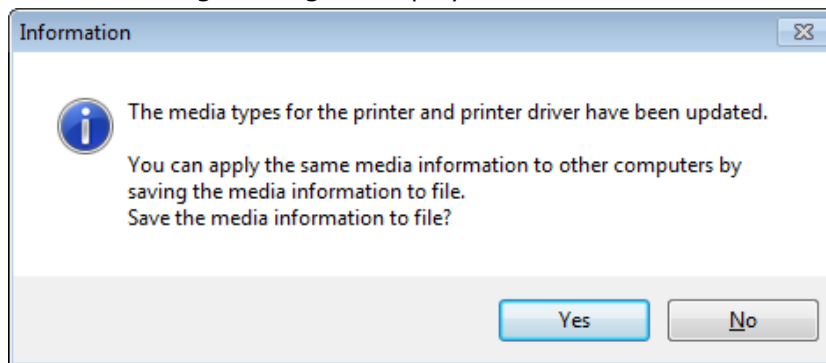
6. The **Confirm Update** dialog box is displayed. Configure **Update Target** and click the **Execute** button. The printer control panel and printer driver media information is updated.



**<Note>**

- You should normally select **Update the printer control panel and printer driver**.

7. The following message is displayed.



If you want to save the current media information in a file, click the **Yes** button. If you do not want to save it, click the **No** button.

**<Note>**

- The media information is saved as a media information file (.amx file).
  - You can apply the same media information as the current computer on another computer by importing this saved media information file on the other computer.
- Refer to [3. Applying a Saved Media Information File On Another Computer](#) for details on how to import a saved media information file on another computer.

---

## 2-2. If You Are Applying New Media Information Files

When a new media information file (.amx file) is released by Canon, apply the media information to the printer control panel and printer driver using the following procedure.

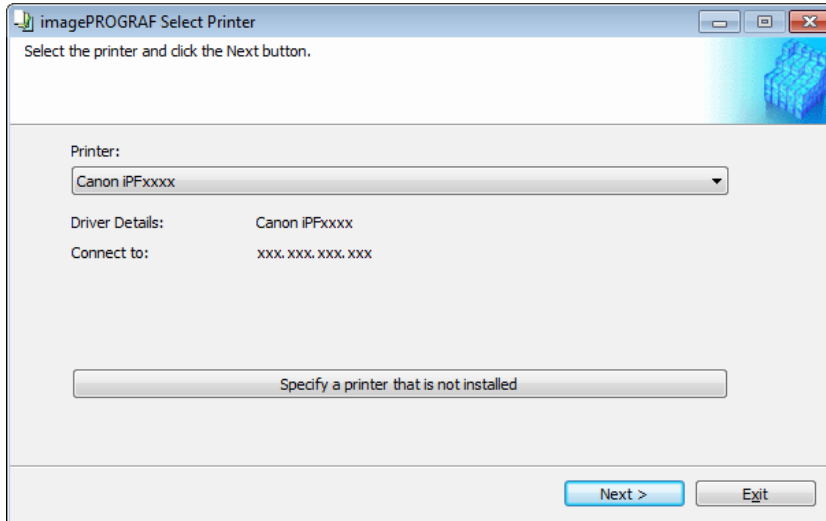
**<<Important>>**

- Do not perform printing on the printer or turn off the printer while you are configuring the media information.
- When you apply a media information file, the media type display order and other settings return to their default values. Reconfigure these settings again after applying the media information file.

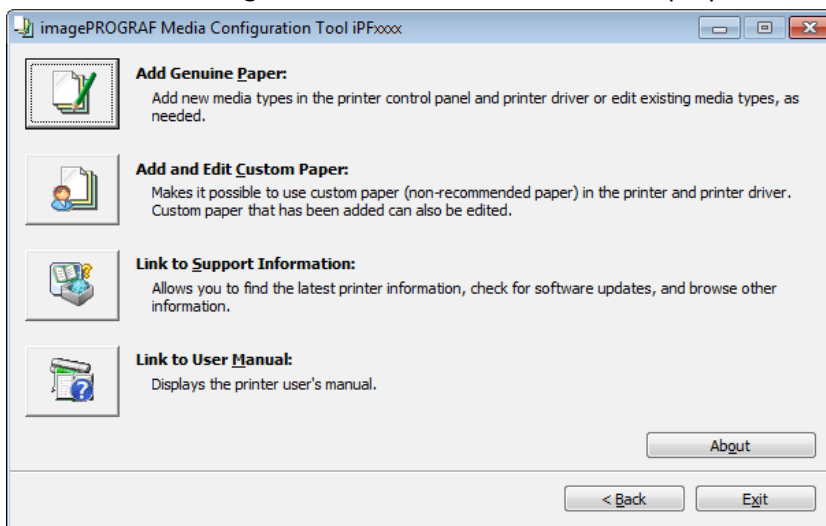
1. From the **Start** menu, select **All Programs > imagePROGRAF Media Configuration Tool > imagePROGRAF Media Configuration Tool**. The Media Configuration Tool runs.



2. The **Select Printer** dialog box is displayed. Select the printer for which to update the media information, and then click the **Next** button.



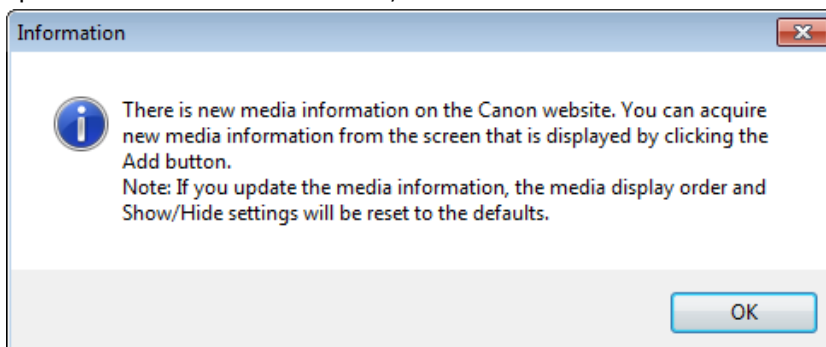
3. The Media Configuration Tool main window is displayed. Click the **Add Genuine Paper** button.



**<Note>**

- If the **Add Media Type** dialog box is displayed instead of the main window at this time, configure the settings by referring to [2-1. If You Have Installed the Media Configuration Tool.](#)

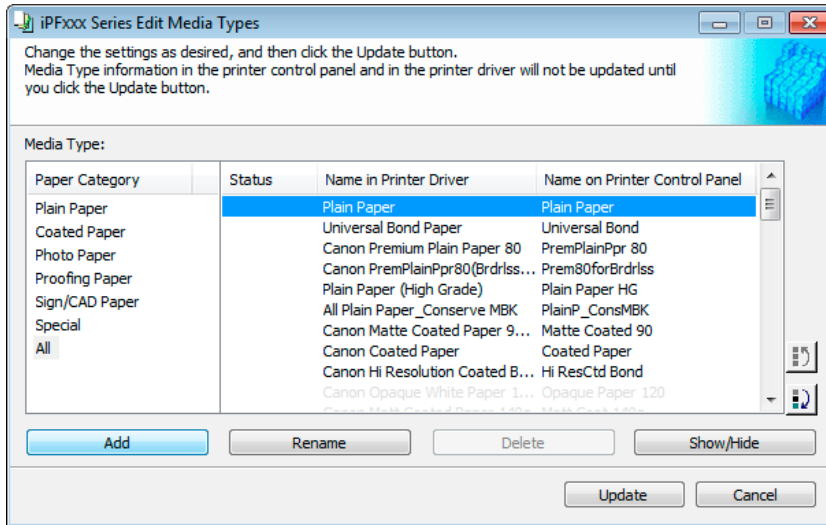
When a newer version of media information file than the media information file that is applied to your printer driver is released on the Canon website, the following message is displayed. To update the media information, click the **OK** button.



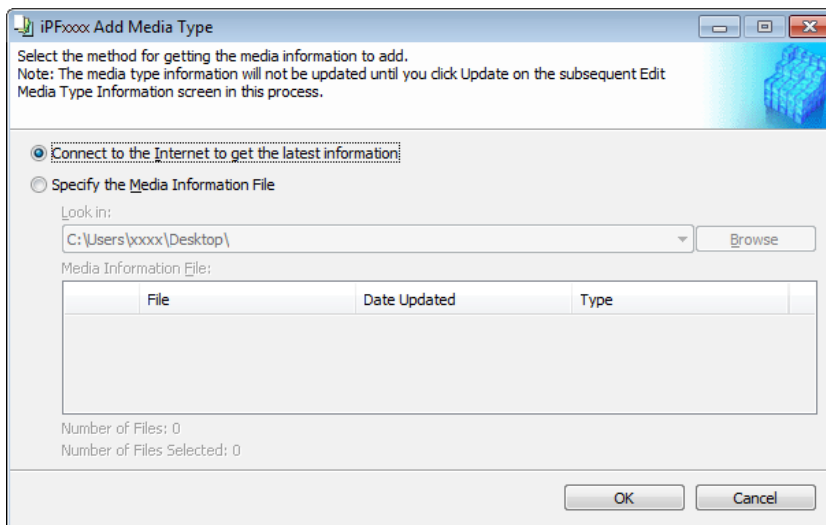
<<Important>>

- When you update the media information, the paper display order and **Show/Hide** settings return to their default values.

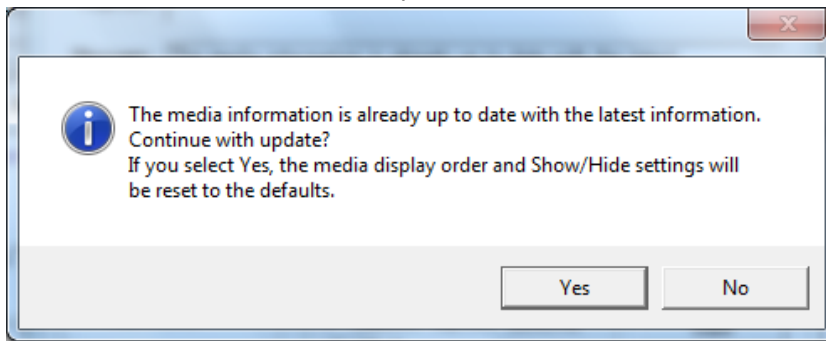
4. The **Edit Media Types** dialog box is displayed. Click the **Add** button.



5. Make sure that **Connect to the Internet to get the latest information** is selected, and then click the **OK** button.



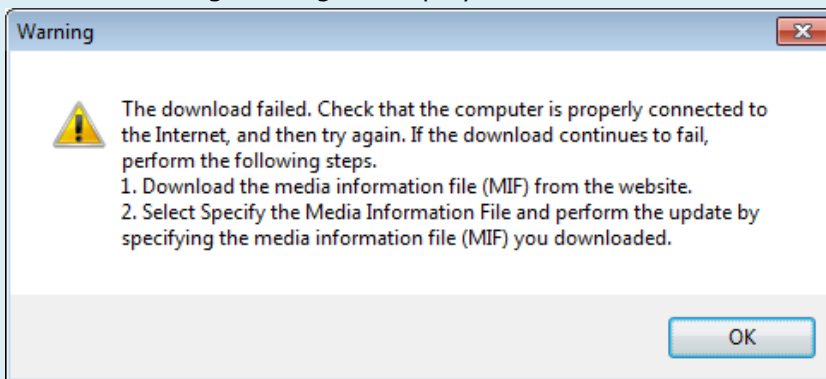
If the following message is displayed at this time, the latest media information is already applied to your printer driver. There is normally no need to update. To exit without updating, click the **No** button. To continue with the update, click the **Yes** button.



**<<Important>>**

- When you update the media information, the paper display order and **Show/Hide** settings return to their default values.

■ If the following message is displayed



If this message is displayed, the media information file could not be downloaded automatically from the Internet. Configure the settings using the following procedure.

(1) Open a web browser on a computer that can access the Internet, and access the Canon website.

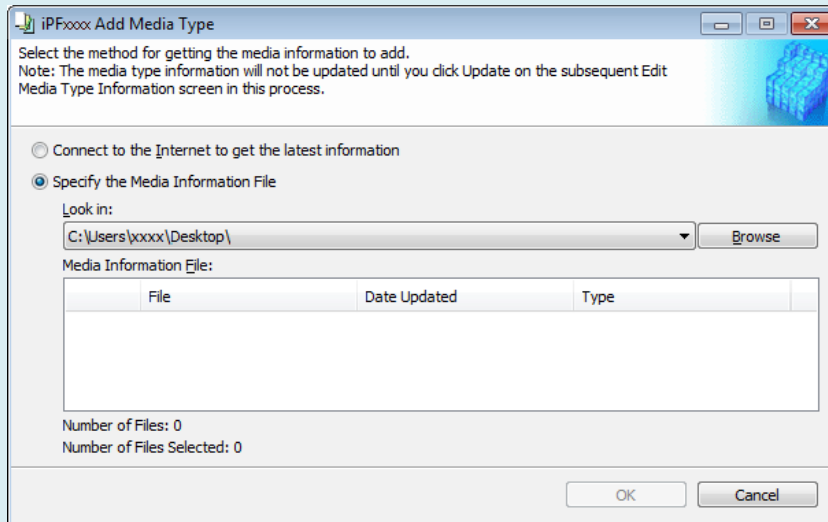
(2) Download the media information file (.amx file) corresponding to the printer you want to update from the Canon website.

**<<Important>>**

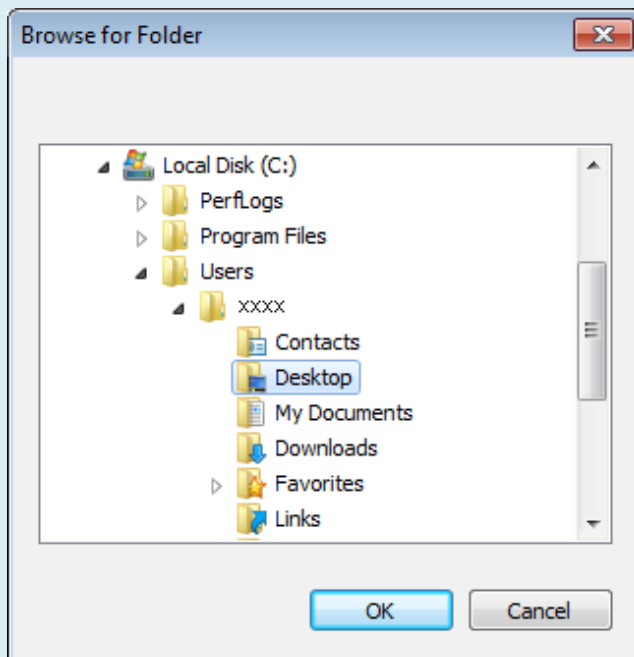
- Download the file that has the .amx extension. Files with the .amf extension cannot be used with this version of the Media Configuration Tool.

(3) Copy the downloaded media information file (.amx file) to the computer where the Media Configuration Tool is installed.

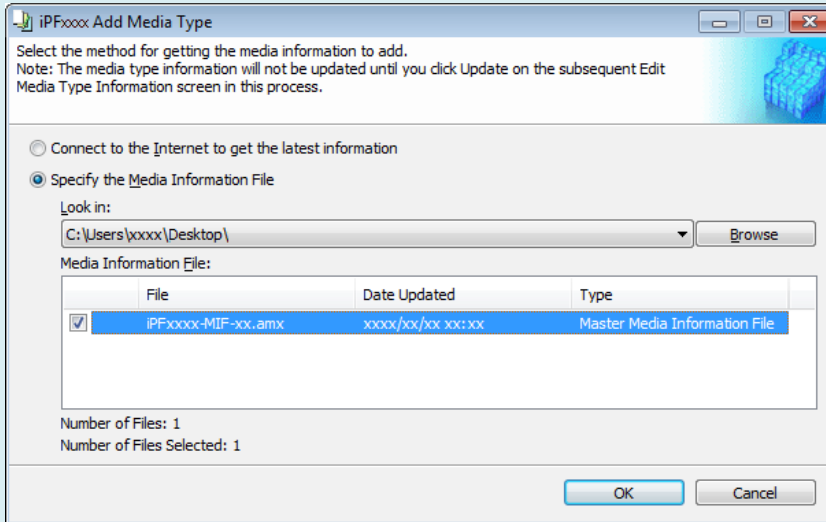
(4) Select **Specify the Media Information File** in the **Add Media Type** dialog box, and then click the **Browse** button.



(5) Select the folder that contains the media information file (.amx file), and then click the **OK** button.



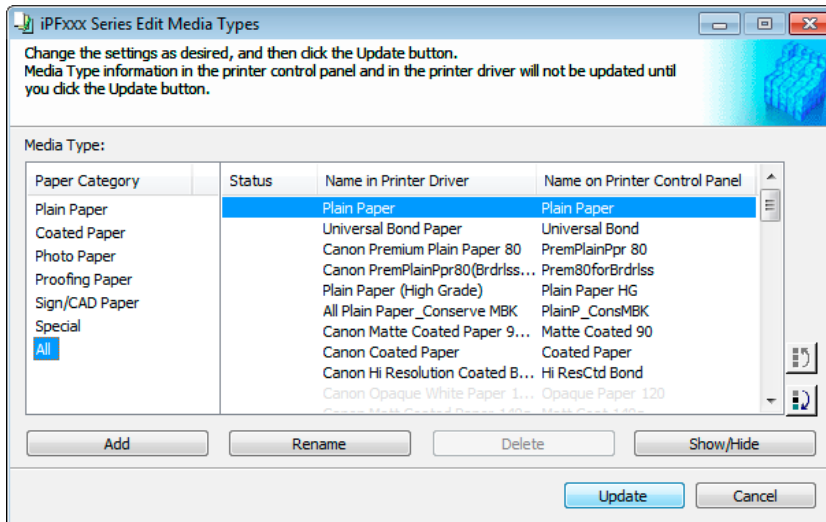
(6) The names of the media information files contained in the selected folder are displayed in the **Media Information File** field in the **Add Media Type** dialog box. Select the check box for the media information file name and click the **OK** button.



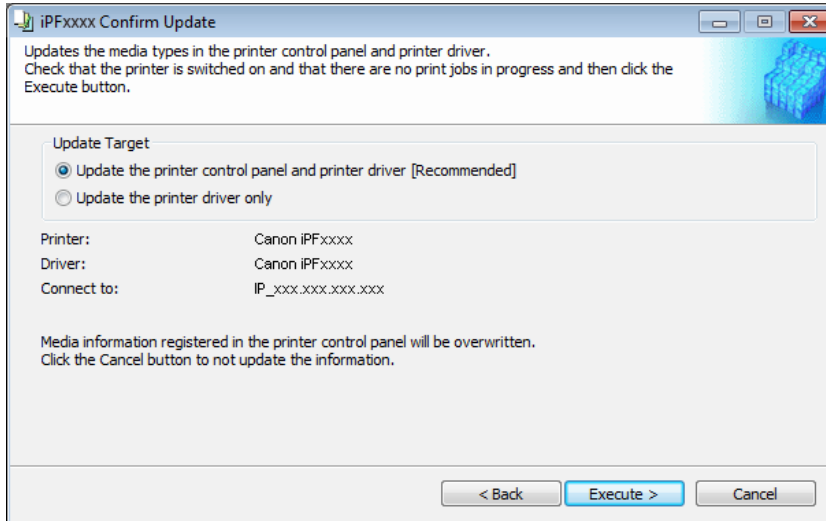
Proceed to step 6.

6. Click **OK** when the confirmation message is displayed.

7. In the **Edit Media Types** dialog box, click the **Update** button.



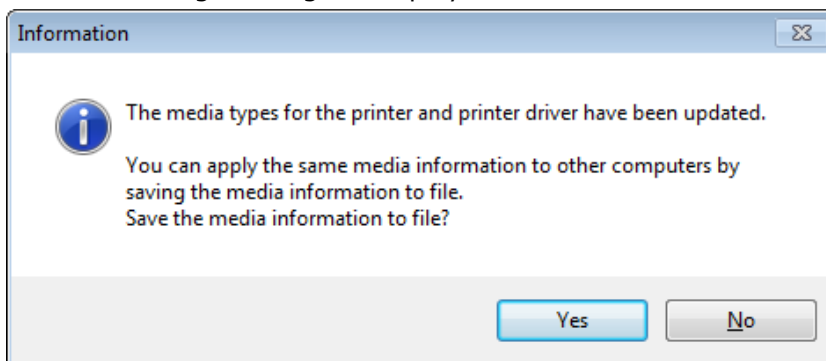
8. The **Confirm Update** dialog box is displayed. Configure **Update Target** and click the **Execute** button. The printer control panel and printer driver media information is updated.



**<Note>**

- You should normally select **Update the printer control panel and printer driver**.

9. The following message is displayed.



If you want to save the current media information in a file, click the **Yes** button. If you do not want to save it, click the **No** button.

**<Note>**

- The media information is saved as a media information file (.amx file).
  - You can apply the same media information as the current computer on another computer by importing this saved media information file on the other computer.
- Refer to [3. Applying a Saved Media Information File On Another Computer](#) for details on how to import a saved media information file on another computer.

### 3. Applying a Saved Media Information File On Another Computer

You can import and use the media information file you saved from your computer on other printers and computer by using the following procedure.

1. Copy the saved media information file (.amx) onto the other computer.

2. Install and run the Media Configuration Tool on the other computer.

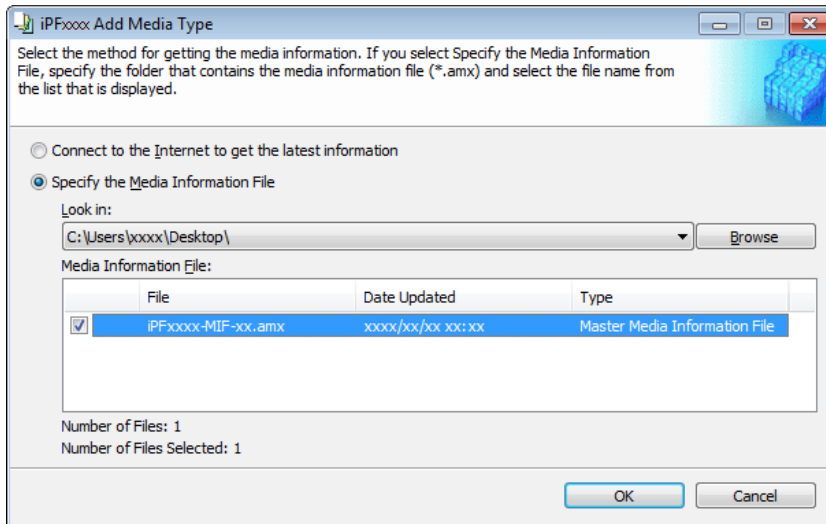
3. Select the printer in the **Select Printer** dialog box, and then click the **Next** button.

**<Note>**

- Select the printer model that matches the media information file you are attempting to import.

4. Select **Specify the Media Information File** in the **Add Media Type** dialog box, click the **Browse** button, and then specify the folder that contains the .amx file you copied.

Select the check box for the media information file name and click the OK button.

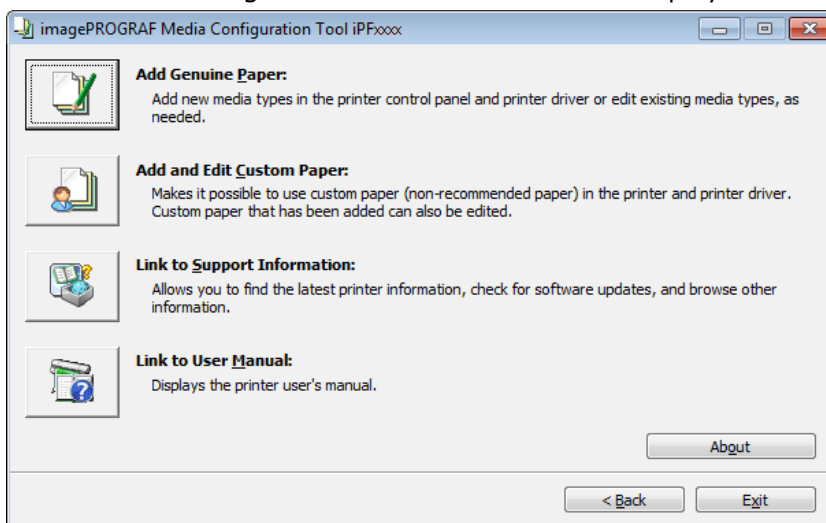


**<Note>**

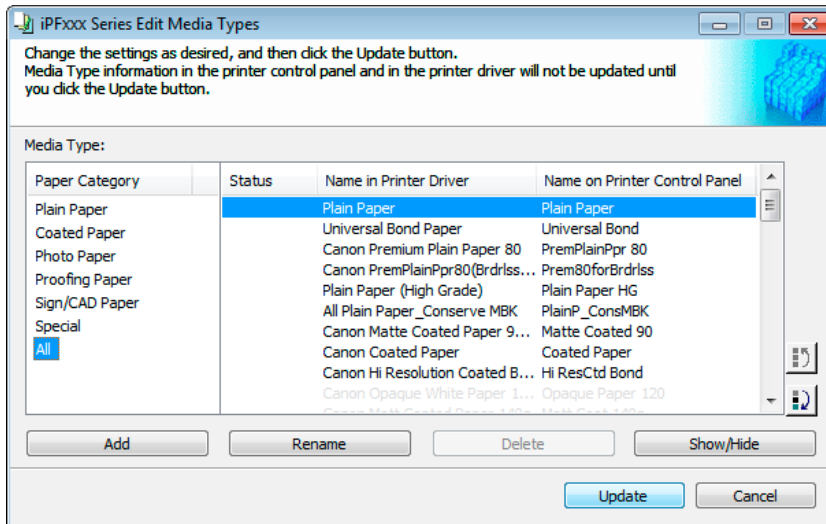
- If the Media Configuration Tool main window is displayed at this time, click the **Add Genuine Paper** button, and then click the **Add** button on the screen that opens.

5. Click **OK** when the confirmation message is displayed.

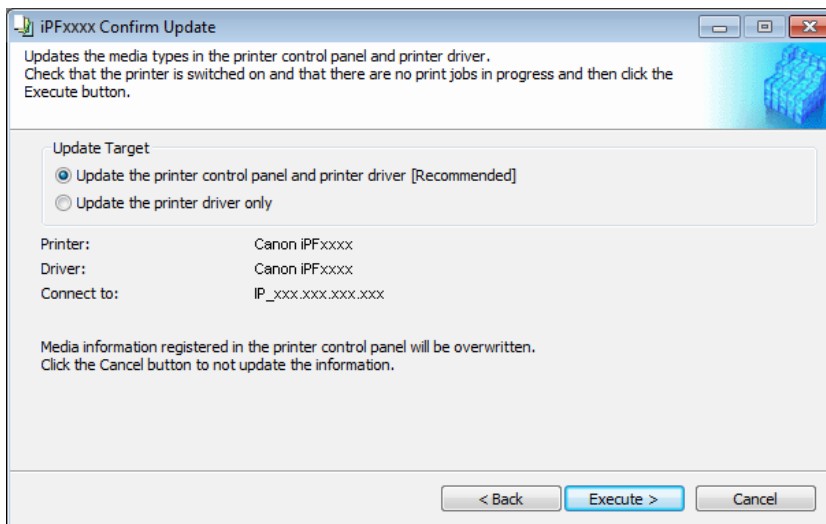
6. The Media Configuration Tool main window is displayed. Click the **Add Genuine Paper** button.



7. In the **Edit Media Types** dialog box, click the **Update** button.



8. Configure **Update Target** and click the **Execute** button.



## Important: If you are using custom paper created with an old version of Media Configuration Tool

In order to use custom paper created using an old version (Version 5.8xxx or lower) of imagePROGRAF Media Configuration Tool with this version of the Media Configuration Tool, you need to perform the following procedure.

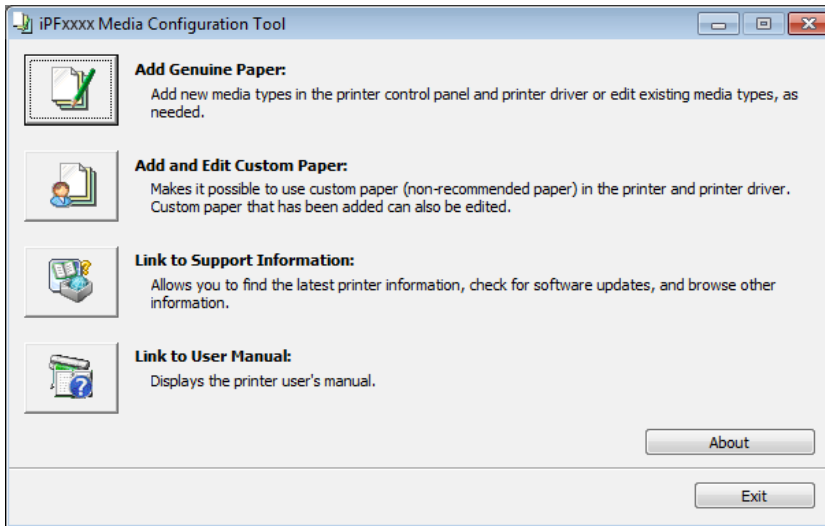
### <<Important>>

- Perform the following procedure on all of the printers where you created custom paper.

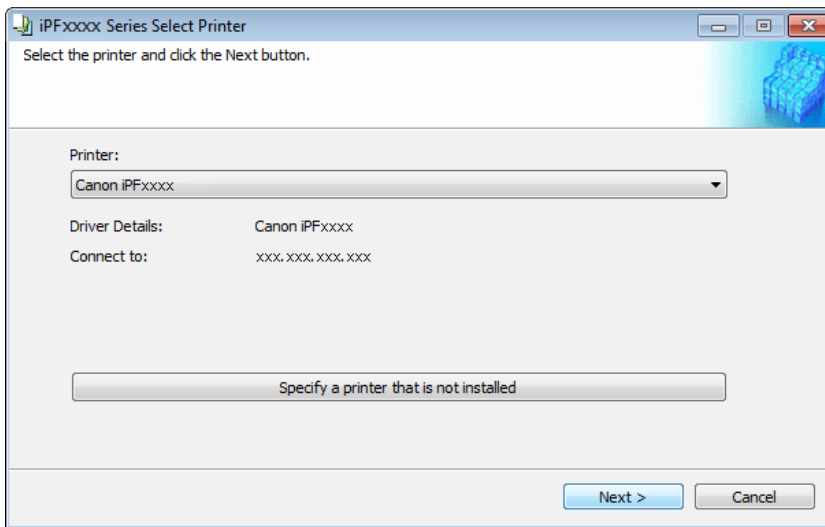
1. Run the old version of the Media Configuration Tool corresponding to the printer where you created the custom paper. From the **Start** menu, select **All Programs > iPFxxxx Media Configuration Tool > iPFxxxx Media Configuration Tool**.



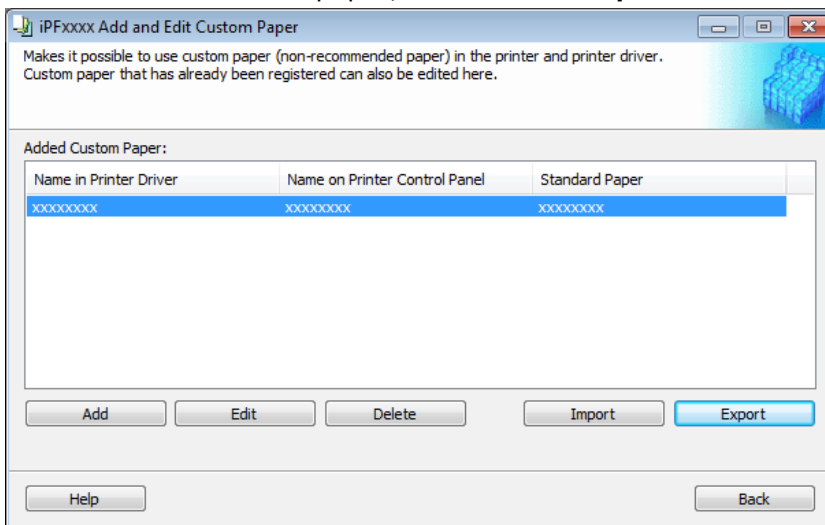
2. Click the **Add and Edit Custom Paper** button.



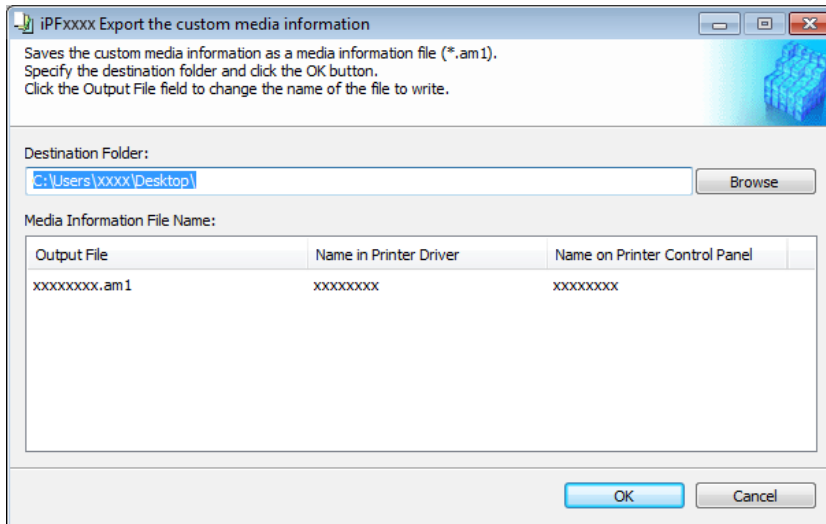
3. Make sure that the printer which you created the custom paper is displayed in **Printer** in the **Select Printer** dialog box, and then click the **Next** button.



4. Select added custom paper, and click the **Export** button.



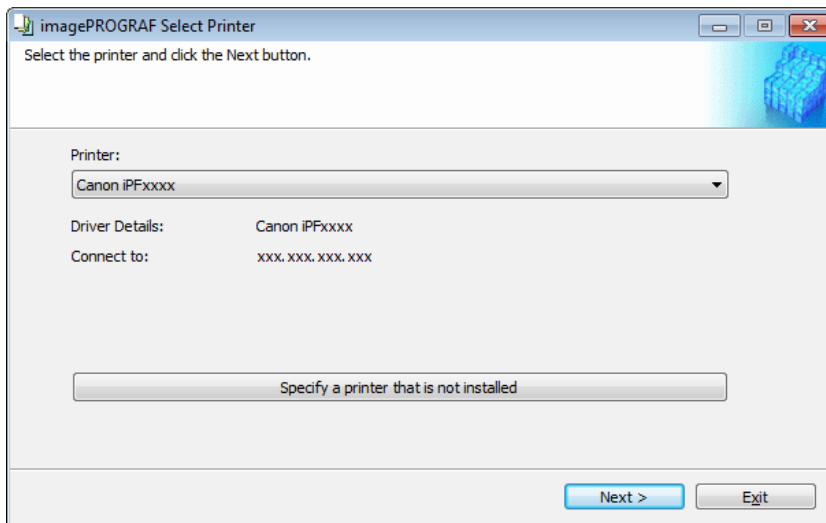
5. Specify the location to save the custom media information file and then click the **OK** button.



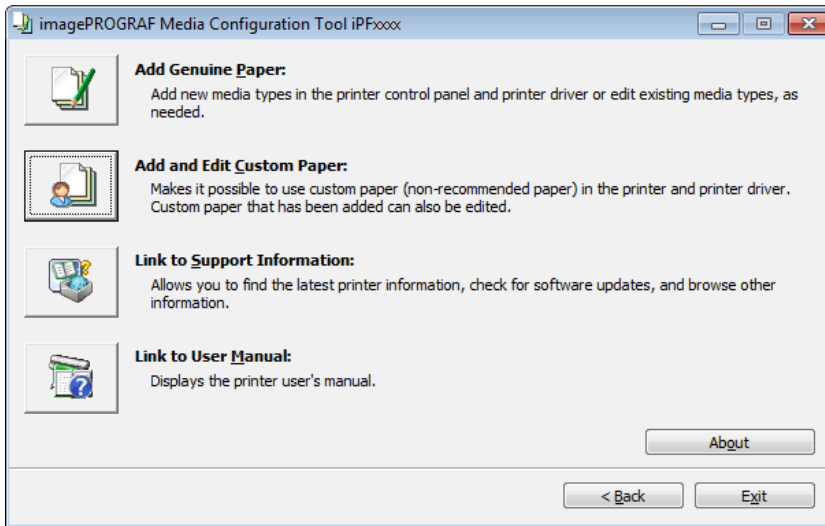
6. Exit the Media Configuration Tool.

7. Run this version of the Media Configuration Tool. From the **Start** menu, select **All Programs > imagePROGRAF Media Configuration Tool > imagePROGRAF Media Configuration Tool**.

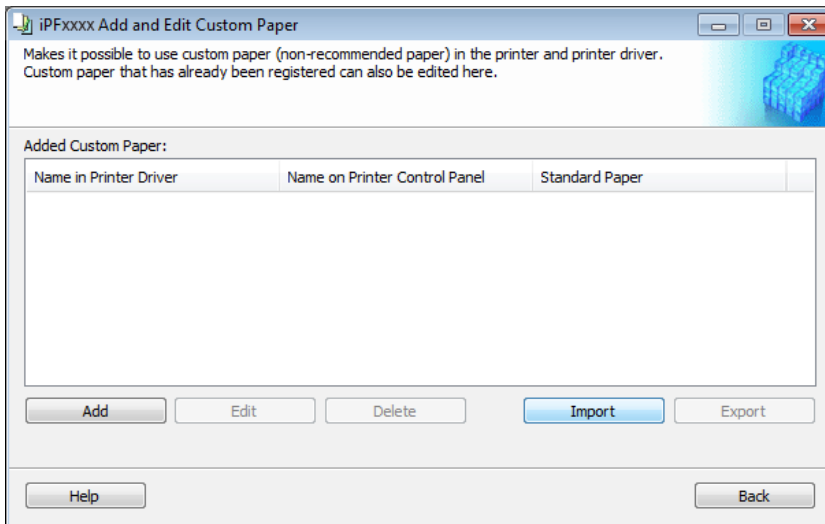
8. Make sure that the same printer as step 3 is selected in **Printer** in the **Select Printer** dialog box, and then click the **Next** button.



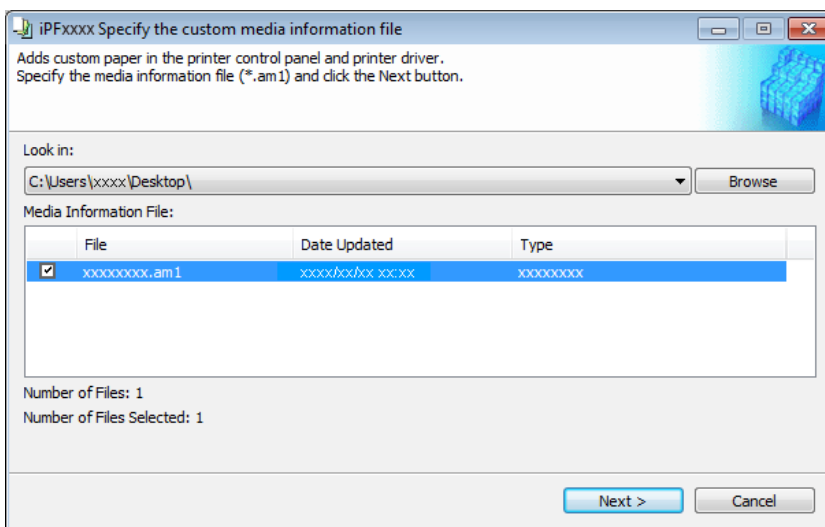
9. Click the **Add and Edit Custom Paper** button.



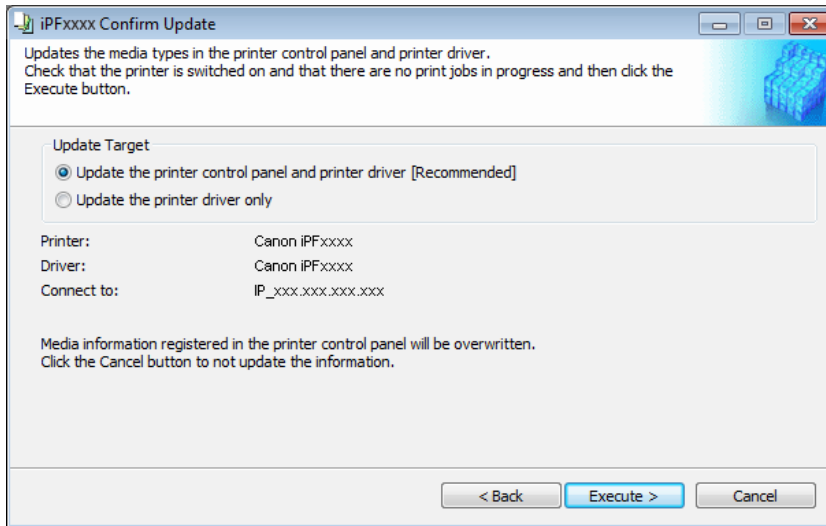
10. Click the **Import** button.



11. Select the custom media information file you exported in step 5, and then click the **Next** button.



12. Configure **Update Target** and click the **Execute** button.



#### ■ Trademarks

- Canon, the Canon logo, and imagePROGRAF are trademarks or registered trademarks of CANON INC.
- Microsoft is a registered trademark of Microsoft Corporation.
- Windows is a trademark or registered trademark of Microsoft Corporation in the U.S. and/or other countries.

#### ■ Copyright

- Duplicating all or part of the content of this manual without permission is prohibited.

#### ■ Notices

- The computer operation screens used in this manual may display differently depending on your model and environment.
- The content of this manual is subject to change without notice.