



Online Manual

Quick Utility Toolbox Guide

Contents

Using This Online Manual.	3
Trademarks and Licenses.	4
Search Tips.	13
General Notes (Quick Utility Toolbox).	15
What You Can Do with Quick Utility Toolbox.	16
Starting Software from Quick Utility Toolbox.	17
Main Screen (MB series / iB series).	20
Main Screen (PRO series).	22
Printer Management Dialog Box.	25
Notification Area Icon.	28
Destination Folder Settings.	29
Setting the Destination.	30
Folder Setting Utility Window.	36
Add Destination Folder/Edit Destination Folder Dialog Box.	38
Troubleshooting.	40
How to Check the Version - Quick Utility Toolbox -.	41

Using This Online Manual

- [Symbols Used in This Document](#)
- [Touch-enabled Device Users \(Windows\)](#)

Symbols Used in This Document

Warning

Instructions that, if ignored, could result in death or serious personal injury caused by incorrect operation of the equipment. These must be observed for safe operation.

Caution

Instructions that, if ignored, could result in personal injury or material damage caused by incorrect operation of the equipment. These must be observed for safe operation.

Important

Instructions including important information. To avoid damage and injury or improper use of the product, be sure to read these indications.

Note

Instructions including notes for operation and additional explanations.

Basics

Instructions explaining basic operations of your product.

Note

-
- Icons may vary depending on your product.
-

Touch-enabled Device Users (Windows)

For touch actions, you need to replace "right-click" in this document with the action set on the operating system. For example, if the action is set to "press and hold" on your operating system, replace "right-click" with "press and hold."

Trademarks and Licenses

- Microsoft is a registered trademark of Microsoft Corporation.
- Windows is a trademark or registered trademark of Microsoft Corporation in the U.S. and/or other countries.
- Windows Vista is a trademark or registered trademark of Microsoft Corporation in the U.S. and/or other countries.
- Internet Explorer is a trademark or registered trademark of Microsoft Corporation in the U.S. and/or other countries.
- Mac, Mac OS, AirPort, Safari, Bonjour, iPad, iPhone and iPod touch are trademarks of Apple Inc., registered in the U.S. and other countries. App Store, AirPrint and the AirPrint logo are trademarks of Apple Inc.
- IOS is a trademark or registered trademark of Cisco in the U.S. and other countries and is used under license.
- Google Cloud Print, Google Chrome, Chrome OS, Chromebook, Android, Google Play, Google Drive, Google Apps and Picasa are either registered trademarks or trademarks of Google Inc.
- Adobe, Flash, Photoshop, Photoshop Elements, Lightroom, Adobe RGB and Adobe RGB (1998) are either registered trademarks or trademarks of Adobe Systems Incorporated in the United States and/or other countries.
- Bluetooth is a trademark of Bluetooth SIG, Inc., U.S.A. and licensed to Canon Inc.
- Autodesk and AutoCAD are registered trademarks or trademarks of Autodesk, Inc., and/or its subsidiaries and/or affiliates in the USA and/or other countries.

»» Note

- The formal name of Windows Vista is Microsoft Windows Vista operating system.

Copyright (c) 2003-2004, Apple Computer, Inc. All rights reserved.

Redistribution and use in source and binary forms, with or without modification, are permitted provided that the following conditions are met:

1. Redistributions of source code must retain the above copyright notice, this list of conditions and the following disclaimer.
2. Redistributions in binary form must reproduce the above copyright notice, this list of conditions and the following disclaimer in the documentation and/or other materials provided with the distribution.
3. Neither the name of Apple Computer, Inc. ("Apple") nor the names of its contributors may be used to endorse or promote products derived from this software without specific prior written permission.

THIS SOFTWARE IS PROVIDED BY APPLE AND ITS CONTRIBUTORS "AS IS" AND ANY EXPRESS OR IMPLIED WARRANTIES, INCLUDING, BUT NOT LIMITED TO, THE IMPLIED WARRANTIES OF MERCHANTABILITY AND FITNESS FOR A PARTICULAR PURPOSE ARE DISCLAIMED. IN NO EVENT SHALL APPLE OR ITS CONTRIBUTORS BE LIABLE FOR ANY DIRECT, INDIRECT, INCIDENTAL, SPECIAL, EXEMPLARY, OR CONSEQUENTIAL DAMAGES (INCLUDING, BUT NOT LIMITED TO, PROCUREMENT OF SUBSTITUTE GOODS OR SERVICES; LOSS OF USE, DATA, OR PROFITS; OR BUSINESS INTERRUPTION) HOWEVER CAUSED AND ON ANY THEORY OF LIABILITY, WHETHER IN CONTRACT, STRICT LIABILITY, OR TORT INCLUDING NEGLIGENCE OR OTHERWISE) ARISING IN ANY WAY OUT OF THE USE OF THIS SOFTWARE, EVEN IF ADVISED OF THE POSSIBILITY OF SUCH DAMAGE.

Apache License

Version 2.0, January 2004

<http://www.apache.org/licenses/>

TERMS AND CONDITIONS FOR USE, REPRODUCTION, AND DISTRIBUTION

1. Definitions.

"License" shall mean the terms and conditions for use, reproduction, and distribution as defined by Sections 1 through 9 of this document.

"Licensor" shall mean the copyright owner or entity authorized by the copyright owner that is granting the License.

"Legal Entity" shall mean the union of the acting entity and all other entities that control, are controlled by, or are under common control with that entity. For the purposes of this definition, "control" means (i) the power, direct or indirect, to cause the direction or management of such entity, whether by contract or otherwise, or (ii) ownership of fifty percent (50%) or more of the outstanding shares, or (iii) beneficial ownership of such entity.

"You" (or "Your") shall mean an individual or Legal Entity exercising permissions granted by this License.

"Source" form shall mean the preferred form for making modifications, including but not limited to software source code, documentation source, and configuration files.

"Object" form shall mean any form resulting from mechanical transformation or translation of a Source form, including but not limited to compiled object code, generated documentation, and conversions to other media types.

"Work" shall mean the work of authorship, whether in Source or Object form, made available under the License, as indicated by a copyright notice that is included in or attached to the work (an example is provided in the Appendix below).

"Derivative Works" shall mean any work, whether in Source or Object form, that is based on (or derived from) the Work and for which the editorial revisions, annotations, elaborations, or other modifications represent, as a whole, an original work of authorship. For the purposes of this License, Derivative Works shall not include works that remain separable from, or merely link (or bind by name) to the interfaces of, the Work and Derivative Works thereof.

"Contribution" shall mean any work of authorship, including the original version of the Work and any modifications or additions to that Work or Derivative Works thereof, that is intentionally submitted to Licensor for inclusion in the Work by the copyright owner or by an individual or Legal Entity authorized to submit on behalf of the copyright owner. For the purposes of this definition, "submitted" means any form of electronic, verbal, or written communication sent to the Licensor or its representatives, including but not limited to communication on electronic mailing lists, source code control systems, and issue tracking systems that are managed by, or on behalf of, the Licensor for the purpose of discussing and improving the Work, but excluding communication that is conspicuously marked or otherwise designated in writing by the copyright owner as "Not a Contribution."

"Contributor" shall mean Licensor and any individual or Legal Entity on behalf of whom a Contribution has been received by Licensor and subsequently incorporated within the Work.

2. Grant of Copyright License. Subject to the terms and conditions of this License, each Contributor hereby grants to You a perpetual, worldwide, non-exclusive, no-charge, royalty-free, irrevocable

copyright license to reproduce, prepare Derivative Works of, publicly display, publicly perform, sublicense, and distribute the Work and such Derivative Works in Source or Object form.

3. Grant of Patent License. Subject to the terms and conditions of this License, each Contributor hereby grants to You a perpetual, worldwide, non-exclusive, no-charge, royalty-free, irrevocable (except as stated in this section) patent license to make, have made, use, offer to sell, sell, import, and otherwise transfer the Work, where such license applies only to those patent claims licensable by such Contributor that are necessarily infringed by their Contribution(s) alone or by combination of their Contribution(s) with the Work to which such Contribution(s) was submitted. If You institute patent litigation against any entity (including a cross-claim or counterclaim in a lawsuit) alleging that the Work or a Contribution incorporated within the Work constitutes direct or contributory patent infringement, then any patent licenses granted to You under this License for that Work shall terminate as of the date such litigation is filed.
4. Redistribution. You may reproduce and distribute copies of the Work or Derivative Works thereof in any medium, with or without modifications, and in Source or Object form, provided that You meet the following conditions:
 1. You must give any other recipients of the Work or Derivative Works a copy of this License; and
 2. You must cause any modified files to carry prominent notices stating that You changed the files; and
 3. You must retain, in the Source form of any Derivative Works that You distribute, all copyright, patent, trademark, and attribution notices from the Source form of the Work, excluding those notices that do not pertain to any part of the Derivative Works; and
 4. If the Work includes a "NOTICE" text file as part of its distribution, then any Derivative Works that You distribute must include a readable copy of the attribution notices contained within such NOTICE file, excluding those notices that do not pertain to any part of the Derivative Works, in at least one of the following places: within a NOTICE text file distributed as part of the Derivative Works; within the Source form or documentation, if provided along with the Derivative Works; or, within a display generated by the Derivative Works, if and wherever such third-party notices normally appear. The contents of the NOTICE file are for informational purposes only and do not modify the License. You may add Your own attribution notices within Derivative Works that You distribute, alongside or as an addendum to the NOTICE text from the Work, provided that such additional attribution notices cannot be construed as modifying the License.

You may add Your own copyright statement to Your modifications and may provide additional or different license terms and conditions for use, reproduction, or distribution of Your modifications, or for any such Derivative Works as a whole, provided Your use, reproduction, and distribution of the Work otherwise complies with the conditions stated in this License.

5. Submission of Contributions. Unless You explicitly state otherwise, any Contribution intentionally submitted for inclusion in the Work by You to the Licensor shall be under the terms and conditions of this License, without any additional terms or conditions. Notwithstanding the above, nothing herein shall supersede or modify the terms of any separate license agreement you may have executed with Licensor regarding such Contributions.
6. Trademarks. This License does not grant permission to use the trade names, trademarks, service marks, or product names of the Licensor, except as required for reasonable and customary use in describing the origin of the Work and reproducing the content of the NOTICE file.
7. Disclaimer of Warranty. Unless required by applicable law or agreed to in writing, Licensor provides the Work (and each Contributor provides its Contributions) on an "AS IS" BASIS, WITHOUT WARRANTIES OR CONDITIONS OF ANY KIND, either express or implied, including, without

limitation, any warranties or conditions of TITLE, NON-INFRINGEMENT, MERCHANTABILITY, or FITNESS FOR A PARTICULAR PURPOSE. You are solely responsible for determining the appropriateness of using or redistributing the Work and assume any risks associated with Your exercise of permissions under this License.

8. Limitation of Liability. In no event and under no legal theory, whether in tort (including negligence), contract, or otherwise, unless required by applicable law (such as deliberate and grossly negligent acts) or agreed to in writing, shall any Contributor be liable to You for damages, including any direct, indirect, special, incidental, or consequential damages of any character arising as a result of this License or out of the use or inability to use the Work (including but not limited to damages for loss of goodwill, work stoppage, computer failure or malfunction, or any and all other commercial damages or losses), even if such Contributor has been advised of the possibility of such damages.
9. Accepting Warranty or Additional Liability. While redistributing the Work or Derivative Works thereof, You may choose to offer, and charge a fee for, acceptance of support, warranty, indemnity, or other liability obligations and/or rights consistent with this License. However, in accepting such obligations, You may act only on Your own behalf and on Your sole responsibility, not on behalf of any other Contributor, and only if You agree to indemnify, defend, and hold each Contributor harmless for any liability incurred by, or claims asserted against, such Contributor by reason of your accepting any such warranty or additional liability.

END OF TERMS AND CONDITIONS

---- Part 1: CMU/UCD copyright notice: (BSD like) ----

Copyright 1989, 1991, 1992 by Carnegie Mellon University

Derivative Work - 1996, 1998-2000

Copyright 1996, 1998-2000 The Regents of the University of California

All Rights Reserved

Permission to use, copy, modify and distribute this software and its documentation for any purpose and without fee is hereby granted, provided that the above copyright notice appears in all copies and that both that copyright notice and this permission notice appear in supporting documentation, and that the name of CMU and The Regents of the University of California not be used in advertising or publicity pertaining to distribution of the software without specific written permission.

CMU AND THE REGENTS OF THE UNIVERSITY OF CALIFORNIA DISCLAIM ALL WARRANTIES WITH REGARD TO THIS SOFTWARE, INCLUDING ALL IMPLIED WARRANTIES OF MERCHANTABILITY AND FITNESS. IN NO EVENT SHALL CMU OR THE REGENTS OF THE UNIVERSITY OF CALIFORNIA BE LIABLE FOR ANY SPECIAL, INDIRECT OR CONSEQUENTIAL DAMAGES OR ANY DAMAGES WHATSOEVER RESULTING FROM THE LOSS OF USE, DATA OR PROFITS, WHETHER IN AN ACTION OF CONTRACT, NEGLIGENCE OR OTHER TORTIOUS ACTION, ARISING OUT OF OR IN CONNECTION WITH THE USE OR PERFORMANCE OF THIS SOFTWARE.

---- Part 2: Networks Associates Technology, Inc copyright notice (BSD) ----

Copyright (c) 2001-2003, Networks Associates Technology, Inc

All rights reserved.

Redistribution and use in source and binary forms, with or without modification, are permitted provided that the following conditions are met:

- * Redistributions of source code must retain the above copyright notice, this list of conditions and the following disclaimer.
- * Redistributions in binary form must reproduce the above copyright notice, this list of conditions and the following disclaimer in the documentation and/or other materials provided with the distribution.
- * Neither the name of the Networks Associates Technology, Inc nor the names of its contributors may be used to endorse or promote products derived from this software without specific prior written permission.

THIS SOFTWARE IS PROVIDED BY THE COPYRIGHT HOLDERS AND CONTRIBUTORS ``AS IS" AND ANY EXPRESS OR IMPLIED WARRANTIES, INCLUDING, BUT NOT LIMITED TO, THE IMPLIED WARRANTIES OF MERCHANTABILITY AND FITNESS FOR A PARTICULAR PURPOSE ARE DISCLAIMED. IN NO EVENT SHALL THE COPYRIGHT HOLDERS OR CONTRIBUTORS BE LIABLE FOR ANY DIRECT, INDIRECT, INCIDENTAL, SPECIAL, EXEMPLARY, OR CONSEQUENTIAL DAMAGES (INCLUDING, BUT NOT LIMITED TO, PROCUREMENT OF SUBSTITUTE GOODS OR SERVICES; LOSS OF USE, DATA, OR PROFITS; OR BUSINESS INTERRUPTION) HOWEVER CAUSED AND ON ANY THEORY OF LIABILITY, WHETHER IN CONTRACT, STRICT LIABILITY, OR TORT (INCLUDING NEGLIGENCE OR OTHERWISE) ARISING IN ANY WAY OUT OF THE USE OF THIS SOFTWARE, EVEN IF ADVISED OF THE POSSIBILITY OF SUCH DAMAGE.

---- Part 3: Cambridge Broadband Ltd. copyright notice (BSD) -----

Portions of this code are copyright (c) 2001-2003, Cambridge Broadband Ltd.

All rights reserved.

Redistribution and use in source and binary forms, with or without modification, are permitted provided that the following conditions are met:

- * Redistributions of source code must retain the above copyright notice, this list of conditions and the following disclaimer.
- * Redistributions in binary form must reproduce the above copyright notice, this list of conditions and the following disclaimer in the documentation and/or other materials provided with the distribution.
- * The name of Cambridge Broadband Ltd. may not be used to endorse or promote products derived from this software without specific prior written permission.

THIS SOFTWARE IS PROVIDED BY THE COPYRIGHT HOLDER ``AS IS" AND ANY EXPRESS OR IMPLIED WARRANTIES, INCLUDING, BUT NOT LIMITED TO, THE IMPLIED WARRANTIES OF MERCHANTABILITY AND FITNESS FOR A PARTICULAR PURPOSE ARE DISCLAIMED. IN NO EVENT SHALL THE COPYRIGHT HOLDER BE LIABLE FOR ANY DIRECT, INDIRECT, INCIDENTAL, SPECIAL, EXEMPLARY, OR CONSEQUENTIAL DAMAGES (INCLUDING, BUT NOT LIMITED TO, PROCUREMENT OF SUBSTITUTE GOODS OR SERVICES; LOSS OF USE, DATA, OR PROFITS; OR BUSINESS INTERRUPTION) HOWEVER CAUSED AND ON ANY THEORY OF LIABILITY, WHETHER IN CONTRACT, STRICT LIABILITY, OR TORT (INCLUDING NEGLIGENCE OR OTHERWISE) ARISING IN ANY WAY OUT OF THE USE OF THIS SOFTWARE, EVEN IF ADVISED OF THE POSSIBILITY OF SUCH DAMAGE.

---- Part 4: Sun Microsystems, Inc. copyright notice (BSD) -----

Copyright c 2003 Sun Microsystems, Inc., 4150 Network Circle, Santa Clara, California 95054, U.S.A. All rights reserved.

Use is subject to license terms below.

This distribution may include materials developed by third parties.

Sun, Sun Microsystems, the Sun logo and Solaris are trademarks or registered trademarks of Sun Microsystems, Inc. in the U.S. and other countries.

Redistribution and use in source and binary forms, with or without modification, are permitted provided that the following conditions are met:

- * Redistributions of source code must retain the above copyright notice, this list of conditions and the following disclaimer.
- * Redistributions in binary form must reproduce the above copyright notice, this list of conditions and the following disclaimer in the documentation and/or other materials provided with the distribution.
- * Neither the name of the Sun Microsystems, Inc. nor the names of its contributors may be used to endorse or promote products derived from this software without specific prior written permission.

THIS SOFTWARE IS PROVIDED BY THE COPYRIGHT HOLDERS AND CONTRIBUTORS ``AS IS'' AND ANY EXPRESS OR IMPLIED WARRANTIES, INCLUDING, BUT NOT LIMITED TO, THE IMPLIED WARRANTIES OF MERCHANTABILITY AND FITNESS FOR A PARTICULAR PURPOSE ARE DISCLAIMED. IN NO EVENT SHALL THE COPYRIGHT HOLDERS OR CONTRIBUTORS BE LIABLE FOR ANY DIRECT, INDIRECT, INCIDENTAL, SPECIAL, EXEMPLARY, OR CONSEQUENTIAL DAMAGES (INCLUDING, BUT NOT LIMITED TO, PROCUREMENT OF SUBSTITUTE GOODS OR SERVICES; LOSS OF USE, DATA, OR PROFITS; OR BUSINESS INTERRUPTION) HOWEVER CAUSED AND ON ANY THEORY OF LIABILITY, WHETHER IN CONTRACT, STRICT LIABILITY, OR TORT (INCLUDING NEGLIGENCE OR OTHERWISE) ARISING IN ANY WAY OUT OF THE USE OF THIS SOFTWARE, EVEN IF ADVISED OF THE POSSIBILITY OF SUCH DAMAGE.

---- Part 5: Sparta, Inc copyright notice (BSD) ----

Copyright (c) 2003-2009, Sparta, Inc

All rights reserved.

Redistribution and use in source and binary forms, with or without modification, are permitted provided that the following conditions are met:

- * Redistributions of source code must retain the above copyright notice, this list of conditions and the following disclaimer.
- * Redistributions in binary form must reproduce the above copyright notice, this list of conditions and the following disclaimer in the documentation and/or other materials provided with the distribution.
- * Neither the name of Sparta, Inc nor the names of its contributors may be used to endorse or promote products derived from this software without specific prior written permission.

THIS SOFTWARE IS PROVIDED BY THE COPYRIGHT HOLDERS AND CONTRIBUTORS ``AS IS'' AND ANY EXPRESS OR IMPLIED WARRANTIES, INCLUDING, BUT NOT LIMITED TO, THE IMPLIED WARRANTIES OF MERCHANTABILITY AND FITNESS FOR A PARTICULAR PURPOSE ARE DISCLAIMED. IN NO EVENT SHALL THE COPYRIGHT HOLDERS OR CONTRIBUTORS BE LIABLE FOR ANY DIRECT, INDIRECT, INCIDENTAL, SPECIAL, EXEMPLARY, OR CONSEQUENTIAL DAMAGES (INCLUDING, BUT NOT LIMITED TO, PROCUREMENT OF SUBSTITUTE GOODS OR SERVICES; LOSS OF USE, DATA, OR PROFITS; OR BUSINESS INTERRUPTION) HOWEVER CAUSED AND ON ANY THEORY OF LIABILITY, WHETHER IN CONTRACT, STRICT LIABILITY, OR TORT (INCLUDING NEGLIGENCE OR OTHERWISE) ARISING IN ANY WAY OUT OF THE USE OF THIS SOFTWARE, EVEN IF ADVISED OF THE POSSIBILITY OF SUCH DAMAGE.

---- Part 6: Cisco/BUPTNIC copyright notice (BSD) ----

Copyright (c) 2004, Cisco, Inc and Information Network Center of Beijing University of Posts and Telecommunications.

All rights reserved.

Redistribution and use in source and binary forms, with or without modification, are permitted provided that the following conditions are met:

- * Redistributions of source code must retain the above copyright notice, this list of conditions and the following disclaimer.
- * Redistributions in binary form must reproduce the above copyright notice, this list of conditions and the following disclaimer in the documentation and/or other materials provided with the distribution.
- * Neither the name of Cisco, Inc, Beijing University of Posts and Telecommunications, nor the names of their contributors may be used to endorse or promote products derived from this software without specific prior written permission.

THIS SOFTWARE IS PROVIDED BY THE COPYRIGHT HOLDERS AND CONTRIBUTORS ``AS IS" AND ANY EXPRESS OR IMPLIED WARRANTIES, INCLUDING, BUT NOT LIMITED TO, THE IMPLIED WARRANTIES OF MERCHANTABILITY AND FITNESS FOR A PARTICULAR PURPOSE ARE DISCLAIMED. IN NO EVENT SHALL THE COPYRIGHT HOLDERS OR CONTRIBUTORS BE LIABLE FOR ANY DIRECT, INDIRECT, INCIDENTAL, SPECIAL, EXEMPLARY, OR CONSEQUENTIAL DAMAGES (INCLUDING, BUT NOT LIMITED TO, PROCUREMENT OF SUBSTITUTE GOODS OR SERVICES; LOSS OF USE, DATA, OR PROFITS; OR BUSINESS INTERRUPTION) HOWEVER CAUSED AND ON ANY THEORY OF LIABILITY, WHETHER IN CONTRACT, STRICT LIABILITY, OR TORT (INCLUDING NEGLIGENCE OR OTHERWISE) ARISING IN ANY WAY OUT OF THE USE OF THIS SOFTWARE, EVEN IF ADVISED OF THE POSSIBILITY OF SUCH DAMAGE.

---- Part 7: Fabasoft R&D Software GmbH & Co KG copyright notice (BSD) ----

Copyright (c) Fabasoft R&D Software GmbH & Co KG, 2003 oss@fabasoft.com

Author: Bernhard Penz

Redistribution and use in source and binary forms, with or without modification, are permitted provided that the following conditions are met:

- * Redistributions of source code must retain the above copyright notice, this list of conditions and the following disclaimer.
- * Redistributions in binary form must reproduce the above copyright notice, this list of conditions and the following disclaimer in the documentation and/or other materials provided with the distribution.
- * The name of Fabasoft R&D Software GmbH & Co KG or any of its subsidiaries, brand or product names may not be used to endorse or promote products derived from this software without specific prior written permission.

THIS SOFTWARE IS PROVIDED BY THE COPYRIGHT HOLDER ``AS IS" AND ANY EXPRESS OR IMPLIED WARRANTIES, INCLUDING, BUT NOT LIMITED TO, THE IMPLIED WARRANTIES OF MERCHANTABILITY AND FITNESS FOR A PARTICULAR PURPOSE ARE DISCLAIMED. IN NO EVENT SHALL THE COPYRIGHT HOLDER BE LIABLE FOR ANY DIRECT, INDIRECT, INCIDENTAL, SPECIAL, EXEMPLARY, OR CONSEQUENTIAL DAMAGES (INCLUDING, BUT NOT LIMITED TO, PROCUREMENT OF SUBSTITUTE GOODS OR SERVICES; LOSS OF USE, DATA, OR PROFITS; OR BUSINESS INTERRUPTION) HOWEVER CAUSED AND ON ANY THEORY OF LIABILITY, WHETHER

IN CONTRACT, STRICT LIABILITY, OR TORT (INCLUDING NEGLIGENCE OR OTHERWISE) ARISING IN ANY WAY OUT OF THE USE OF THIS SOFTWARE, EVEN IF ADVISED OF THE POSSIBILITY OF SUCH DAMAGE.

LEADTOOLS

Copyright (C) 1991-2009 LEAD Technologies, Inc.

CMap Resources

Copyright 1990-2009 Adobe Systems Incorporated.
All rights reserved.

Copyright 1990-2010 Adobe Systems Incorporated.
All rights reserved.

Redistribution and use in source and binary forms, with or without modification, are permitted provided that the following conditions are met:

Redistributions of source code must retain the above copyright notice, this list of conditions and the following disclaimer.

Redistributions in binary form must reproduce the above copyright notice, this list of conditions and the following disclaimer in the documentation and/or other materials provided with the distribution.

Neither the name of Adobe Systems Incorporated nor the names of its contributors may be used to endorse or promote products derived from this software without specific prior written permission.

THIS SOFTWARE IS PROVIDED BY THE COPYRIGHT HOLDERS AND CONTRIBUTORS "AS IS" AND ANY EXPRESS OR IMPLIED WARRANTIES, INCLUDING, BUT NOT LIMITED TO, THE IMPLIED WARRANTIES OF MERCHANTABILITY AND FITNESS FOR A PARTICULAR PURPOSE ARE DISCLAIMED. IN NO EVENT SHALL THE COPYRIGHT HOLDER OR CONTRIBUTORS BE LIABLE FOR ANY DIRECT, INDIRECT, INCIDENTAL, SPECIAL, EXEMPLARY, OR CONSEQUENTIAL DAMAGES (INCLUDING, BUT NOT LIMITED TO, PROCUREMENT OF SUBSTITUTE GOODS OR SERVICES; LOSS OF USE, DATA, OR PROFITS; OR BUSINESS INTERRUPTION) HOWEVER CAUSED AND ON ANY THEORY OF LIABILITY, WHETHER IN CONTRACT, STRICT LIABILITY, OR TORT (INCLUDING NEGLIGENCE OR OTHERWISE) ARISING IN ANY WAY OUT OF THE USE OF THIS SOFTWARE, EVEN IF ADVISED OF THE POSSIBILITY OF SUCH DAMAGE.

MIT License

Copyright (c) 1998, 1999, 2000 Thai Open Source Software Center Ltd

Permission is hereby granted, free of charge, to any person obtaining a copy of this software and associated documentation files (the "Software"), to deal in the Software without restriction, including without limitation the rights to use, copy, modify, merge, publish, distribute, sublicense, and/or sell copies of the Software, and to permit persons to whom the Software is furnished to do so, subject to the following conditions:

The above copyright notice and this permission notice shall be included in all copies or substantial portions of the Software.

THE SOFTWARE IS PROVIDED "AS IS", WITHOUT WARRANTY OF ANY KIND, EXPRESS OR IMPLIED, INCLUDING BUT NOT LIMITED TO THE WARRANTIES OF MERCHANTABILITY, FITNESS FOR A PARTICULAR PURPOSE AND NONINFRINGEMENT. IN NO EVENT SHALL THE AUTHORS OR COPYRIGHT HOLDERS BE LIABLE FOR ANY CLAIM, DAMAGES OR OTHER LIABILITY, WHETHER IN AN ACTION OF CONTRACT, TORT OR OTHERWISE, ARISING FROM, OUT OF OR IN CONNECTION WITH THE SOFTWARE OR THE USE OR OTHER DEALINGS IN THE SOFTWARE.


The following applies only to products supporting Wi-Fi.

(c) 2009-2013 by Jeff Mott. All rights reserved.

Redistribution and use in source and binary forms, with or without modification, are permitted provided that the following conditions are met:

- * Redistributions of source code must retain the above copyright notice, this list of conditions, and the following disclaimer.
- * Redistributions in binary form must reproduce the above copyright notice, this list of conditions, and the following disclaimer in the documentation or other materials provided with the distribution.
- * Neither the name CryptoJS nor the names of its contributors may be used to endorse or promote products derived from this software without specific prior written permission.

THIS SOFTWARE IS PROVIDED BY THE COPYRIGHT HOLDERS AND CONTRIBUTORS "AS IS," AND ANY EXPRESS OR IMPLIED WARRANTIES, INCLUDING, BUT NOT LIMITED TO, THE IMPLIED WARRANTIES OF MERCHANTABILITY AND FITNESS FOR A PARTICULAR PURPOSE, ARE DISCLAIMED. IN NO EVENT SHALL THE COPYRIGHT HOLDER OR CONTRIBUTORS BE LIABLE FOR ANY DIRECT, INDIRECT, INCIDENTAL, SPECIAL, EXEMPLARY, OR CONSEQUENTIAL DAMAGES (INCLUDING, BUT NOT LIMITED TO, PROCUREMENT OF SUBSTITUTE GOODS OR SERVICES; LOSS OF USE, DATA, OR PROFITS; OR BUSINESS INTERRUPTION) HOWEVER CAUSED AND ON ANY THEORY OF LIABILITY, WHETHER IN CONTRACT, STRICT LIABILITY, OR TORT (INCLUDING NEGLIGENCE OR OTHERWISE) ARISING IN ANY WAY OUT OF THE USE OF THIS SOFTWARE, EVEN IF ADVISED OF THE POSSIBILITY OF SUCH DAMAGE.

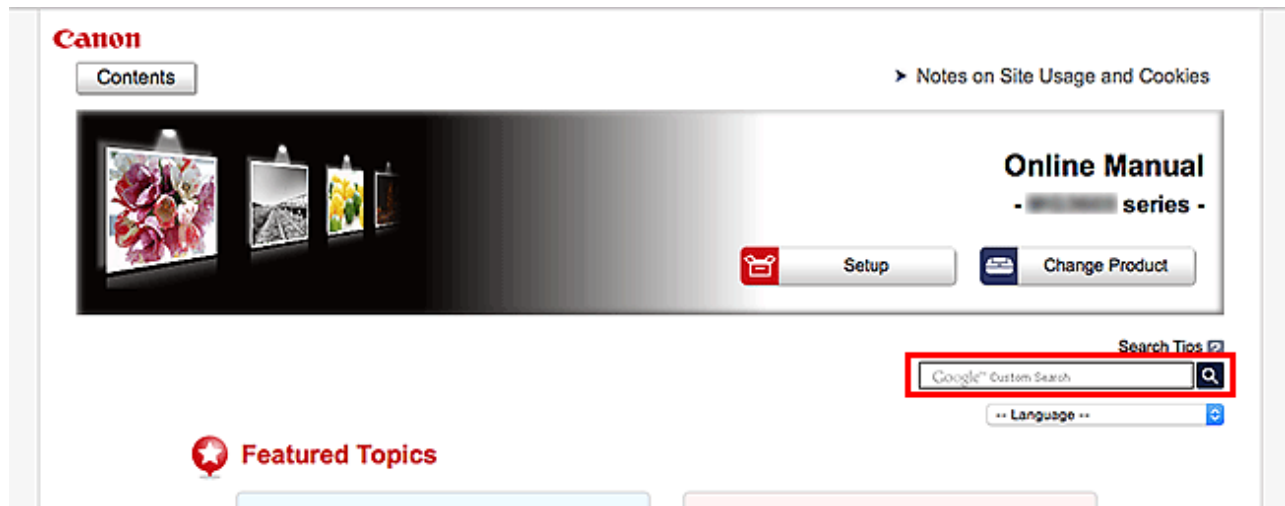
Enter keywords in the search window and click  (Search).

You can search for target pages in this guide.

Entry example: "(your product's model name) load paper"

Search Tips

You can search for target pages by entering keywords in the search window.



►►► Important

- This function may not be available in some countries/regions.

►►► Note

- The displayed screen may vary.
- When searching from this page without entering your product's model name or your application's name, all products supported by this guide will be considered for the search.
If you want to narrow down the search results, add your product's model name or your application's name to the keywords.

• Searching for Functions

Enter your product's model name and a keyword for the function you want to learn about

Example: When you want to learn how to load paper

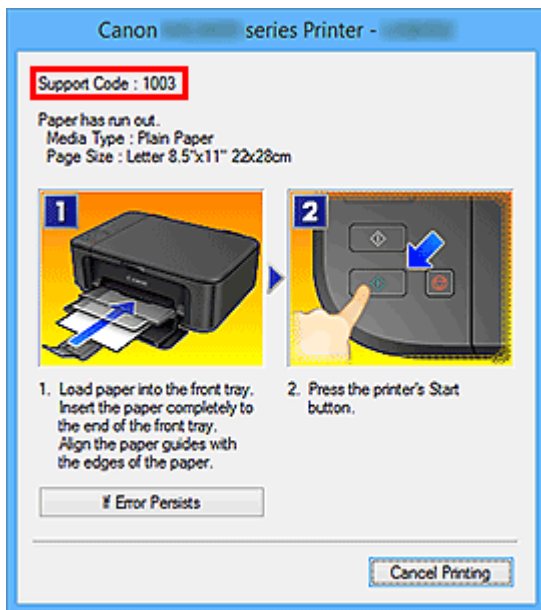
Enter "(your product's model name) load paper" in the search window and perform a search

• Troubleshooting Errors

Enter your product's model name and a support code

Example: When the following error screen appears

Enter "(your product's model name) 1003" in the search window and perform a search



►►► Note

- The displayed screen varies depending on your product.

• **Searching for Application Functions**

Enter your application's name and a keyword for the function you want to learn about

Example: When you want to learn how to print collages with My Image Garden

Enter "My Image Garden collage" in the search window and perform a search

• **Searching for Reference Pages**

Enter your model name and a reference page title*

* You can find reference pages more easily by entering the function name as well.

Example: When you want to browse the page referred to by the following sentence on a scanning procedure page

Refer to "Color Settings Tab" for your model from Home of the Online Manual for details.

Enter "(your product's model name) scan Color Settings Tab" in the search window and perform a search

General Notes (Quick Utility Toolbox)

Quick Utility Toolbox is subject to the following restrictions. Keep these points in mind.

- For products supporting Quick Utility Toolbox, see our website.
- Available functions and settings vary depending on your printer and the country/region setting. Internet connection is required depending on the function to be used. Internet connection fees apply.
- In this guide, descriptions are mainly based on the screens displayed when using Windows 8.1 operating system (hereinafter "Windows 8.1").

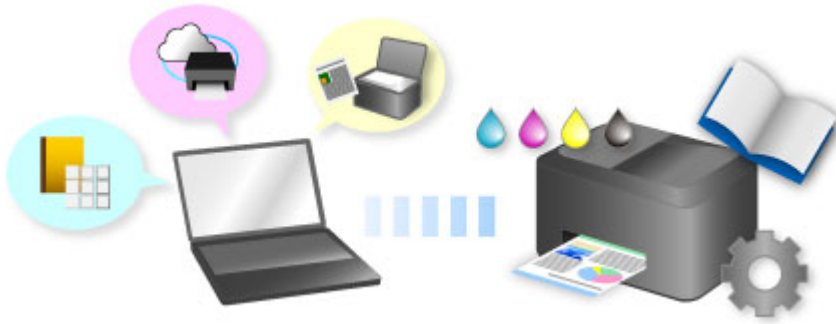
About Downloading the Corresponding Software

- To use each function, you need to install the corresponding software. Access our website to download and install the software.
Internet connection is required for downloading. Internet connection fees apply.

What You Can Do with Quick Utility Toolbox

Quick Utility Toolbox is a shortcut menu that allows you to easily start the functions you want to use. You can quickly start the utilities supporting Quick Utility Toolbox to set up or manage the printer, or access this guide with one click.

You can also set a network folder as the destination for images scanned from the operation panel of the printer and for received fax data.




Starting Software from Quick Utility Toolbox

In Quick Utility Toolbox, you can start software or open manuals from the Main Screen.

▶▶▶ Note

- The **Management Tool** tab does not appear if supported software is not installed.

1. Click  (Quick Utility Toolbox) in the notification area on the desktop.

The Main Screen appears.

■ [Main Screen \(MB series / iB series\)](#)

■ [Main Screen \(PRO series\)](#)

▶▶▶ Note

- If the icon is not displayed in the notification area on the desktop, follow the procedure below to start.

- **Windows 10:**

From **Start** menu, click **All apps > Canon Utilities > Quick Utility Toolbox**.

- **Windows 8.1/Windows 8:**

Click **Quick Utility Toolbox** on the Start screen.

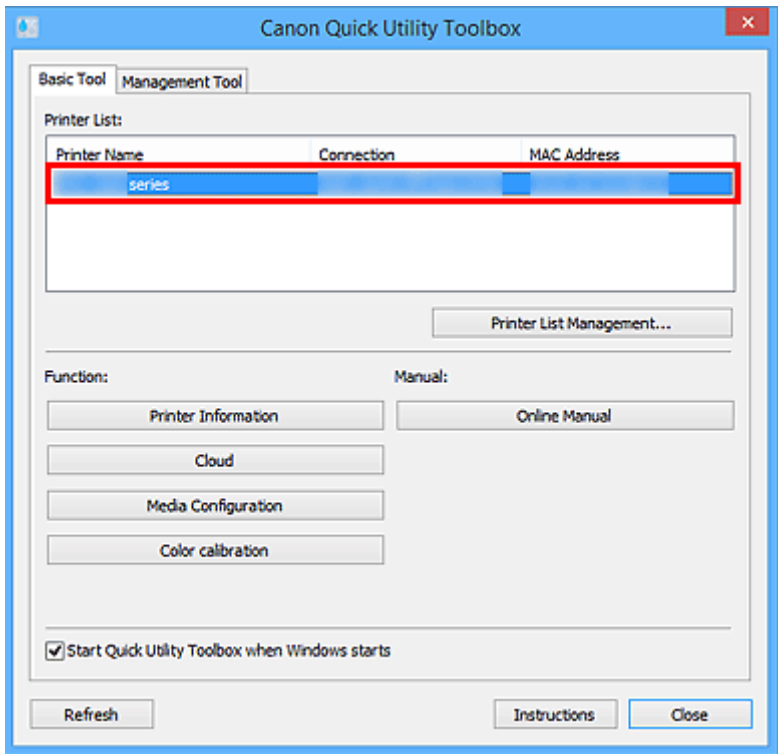
If **Quick Utility Toolbox** is not displayed on the Start screen, select the **Search** charm, then search for "Quick Utility Toolbox".

- **Windows 7/Windows Vista/Windows XP:**

From the **Start** menu, click **All Programs > Canon Utilities > Quick Utility Toolbox > Quick Utility Toolbox**.

The icon appears in the notification area on the desktop, and the Main Screen appears.

2. Select printer you want to use from **Printer List**.

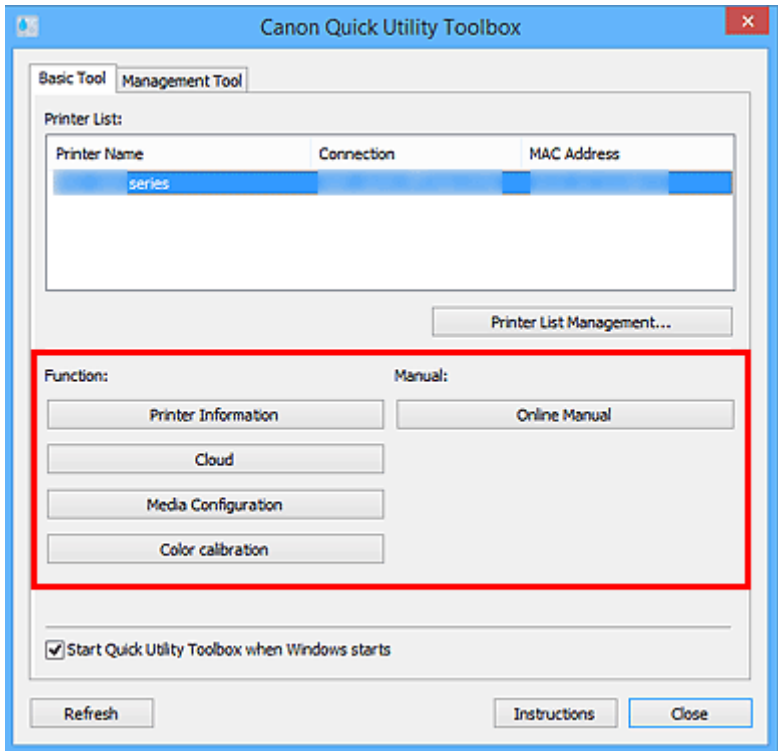


Items corresponding to the selected printer appear in **Function**.

►► Note

- If the printer you want to use is not displayed in **Printer List**, click **Refresh**, or click **Printer List Management...** and add the printer in the displayed [Printer Management dialog box](#).

3. Click the item you want to use.



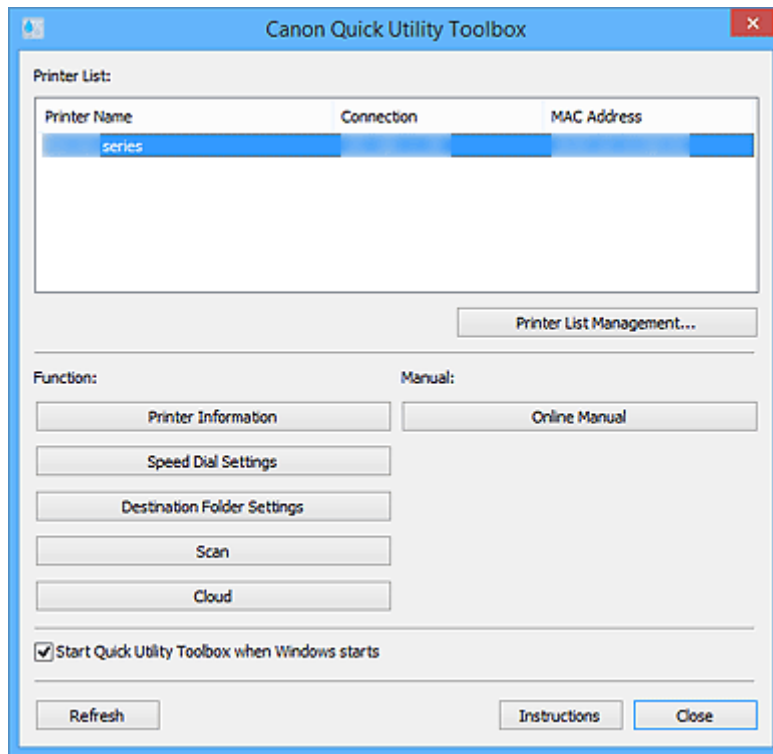
The software starts or manual opens.

▶▶ Note

- Items displayed in **Function** and the available functions vary depending on the printer selected in **Printer List**.

Main Screen (MB series / iB series)

You can start software or open manuals.



Printer List

Displays a list of printers supporting Quick Utility Toolbox among printers installed on your computer. Printers added from **Add Printer...** in the **Printer Management** dialog box also appear.

►►► Important

- Some functions are not available when a printer connected to a single computer is shared in a network environment and used from multiple computers.

►►► Note

- If you are using an MB or iB series printer and the printer does not appear, install the printer driver or MP Drivers from the Setup CD-ROM or our website.
The printer will appear in **Printer List** automatically after installing the printer driver or MP Drivers.

Printer List Management...

Click to display the [Printer Management dialog box](#) for managing (adding, setting, etc.) the printers that appear in **Printer List**.

►►► Note

- If you are using Windows XP, **Printer List Management...** does not appear.

Function

Displays the items supported by the printer selected in **Printer List** and available functions.

Printer Information

Starts a Web browser in which you can check the printer information or use the utility functions.

▶▶▶ Important

- To use this function, the printer and computer must be connected over a network.

▶▶▶ Note

- When an authentication screen appears, you need to enter the user name and password.
For details, see Administrator Password.

Speed Dial Settings

Starts the Speed Dial Utility with which you can edit the fax/telephone numbers registered to the printer.

Destination Folder Settings

Starts Folder Setting Utility with which you can set a network folder as the destination for images scanned from the operation panel of the printer and for received fax data.

▶▶▶ Important

- To use this function, the printer and computer must be connected over a network.

Scan

Starts IJ Scan Utility with which you can scan photos, documents, etc.

Cloud

Starts a Web browser and displays Canon Inkjet Cloud Printing Center. Using the printer's cloud function, you can register/manage applications or check the printer's print status, errors, ink status, etc. from smartphones and tablets.

▶▶▶ Note

- Items displayed in **Function** and the available functions vary depending on the printer selected in **Printer List**.
- Refer to the Online Manual displayed by clicking **Online Manual** for details on the corresponding software.

Manual

Online Manual

Opens the manual of the printer selected in **Printer List**.

Start Quick Utility Toolbox when Windows starts

Select this checkbox to start Quick Utility Toolbox as Windows starts.

Refresh

Click this to refresh the displayed contents.

Instructions

Opens this guide.

Related Topic

- [Starting Software from Quick Utility Toolbox](#)

Main Screen (PRO series)

You can start software or open manuals.

■ [Basic Tool Tab](#)

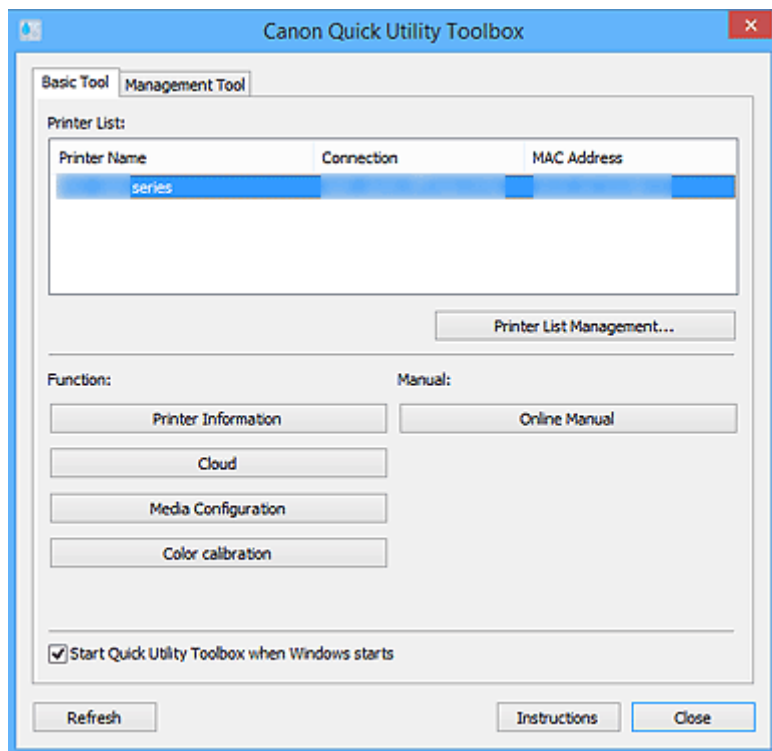
■ [Management Tool Tab](#)

▶▶▶ Note

- If supported software is not installed, the **Management Tool** tab does not appear and the contents of the **Basic Tool** tab appear in the Main Screen.

Basic Tool Tab

Start software or open manuals for the selected printer.



Printer List

Displays a list of printers supporting Quick Utility Toolbox among printers installed on your computer. Printers added from **Add Printer...** in the **Printer Management** dialog box also appear.

▶▶▶ Important

- Some functions are not available when a printer connected to a single computer is shared in a network environment and used from multiple computers.

Printer List Management...

Click to display the [Printer Management dialog box](#) for managing (adding, setting, etc.) the printers that appear in **Printer List**.

▶▶▶ Note

- If you are using Windows XP, **Printer List Management...** does not appear.

Function

Displays the items supported by the printer selected in **Printer List** and available functions.

Printer Information

Starts a Web browser in which you can check the printer information or use the utility functions.

▶▶▶ Important

- To use this function, the printer and computer must be connected over a network.

▶▶▶ Note

- When an authentication screen appears, you need to enter the user name and password.
For details, see Administrator Password.

Cloud

Starts a Web browser and displays Canon Inkjet Cloud Printing Center. Using the printer's cloud function, you can register/manage applications or check the printer's print status, errors, ink status, etc. from smartphones and tablets.

Media Configuration

Starts Media Configuration Tool for adding or editing the paper information on the printer.

To use this function, you need to install Media Configuration Tool. Download Media Configuration Tool from our website.

Color calibration

Starts Calibration Tool for making adjustments so that the selected printer's print results will be in the correct color tones.

For details, see "Executing Color Calibration from Quick Utility Toolbox" for your model from Home of the Online Manual.

▶▶▶ Note

- Items displayed in **Function** and the available functions vary depending on the printer selected in **Printer List**.
- Refer to the Online Manual displayed by clicking **Online Manual** for details on the corresponding software.

Manual

Online Manual

Opens the manual of the printer selected in **Printer List**.

Start Quick Utility Toolbox when Windows starts

Select this checkbox to start Quick Utility Toolbox as Windows starts.

Refresh

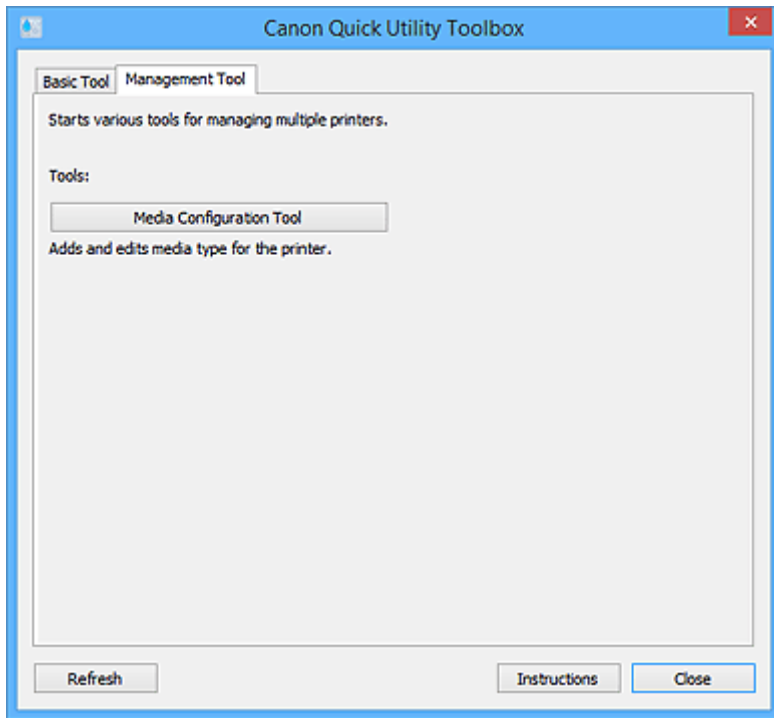
Click this to refresh the displayed contents.

Instructions

Opens this guide.

Management Tool Tab

Start various software programs for managing multiple printers or open their manuals.



Tools

Accounting Manager

Starts Accounting Manager for calculating the printer's printing costs by department or user.

Device Management Console

Starts Device Management Console for checking multiple printer conditions or the calibration status.

Media Configuration Tool

Starts Media Configuration Tool for adding or editing the paper information on the printer.

►►► Note

- To use these applications, you need to install them additionally.
- For details on each application, see the Online Manual.

Refresh

Click this when the software you want to use is not displayed in **Tools**.

Instructions

Opens this guide.

Related Topic

- [Starting Software from Quick Utility Toolbox](#)

Printer Management Dialog Box

Add printers that appear in **Printer List** in the Main Screen or set the display names of the printers.

To display the **Printer Management** dialog box, click **Printer List Management...** in the Main Screen.

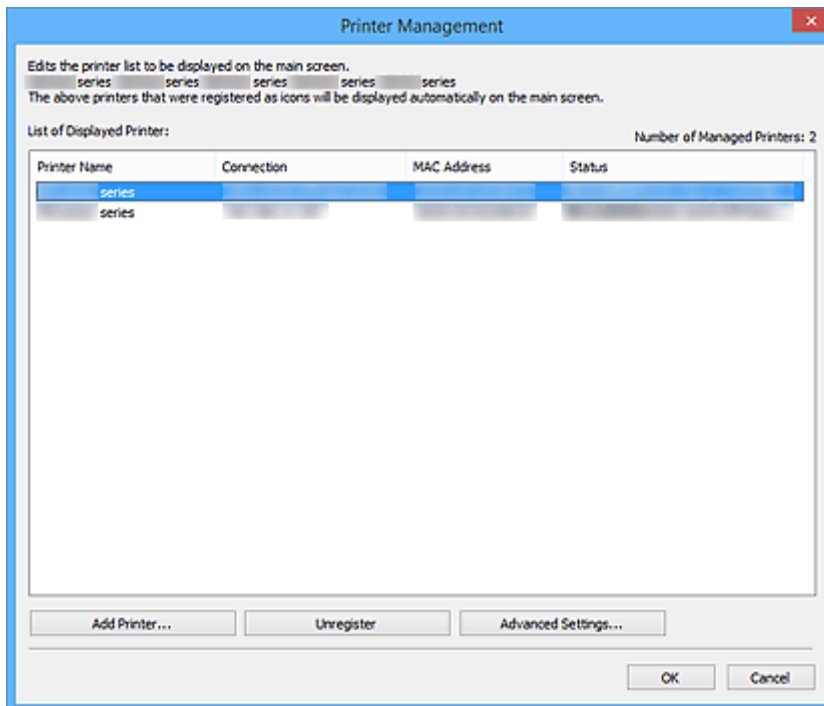
▶▶▶ Note

- Some MB or iB series printers cannot be added from **Add Printer...**

■ [Printer Management Dialog Box](#)

■ [Add Printer Dialog Box](#)

Printer Management Dialog Box



List of Displayed Printer

Displays a list of registered printers.

▶▶▶ Note

- For messages displayed in **Status** and what to do with them, see [Troubleshooting](#).
- If you are using a model supporting wired LAN, the MAC address of the wired LAN appears in **MAC Address** even when it is connected via wireless LAN.

Add Printer...

Click to display the [Add Printer dialog box](#). Search for printers and select the printer(s) you want to register.

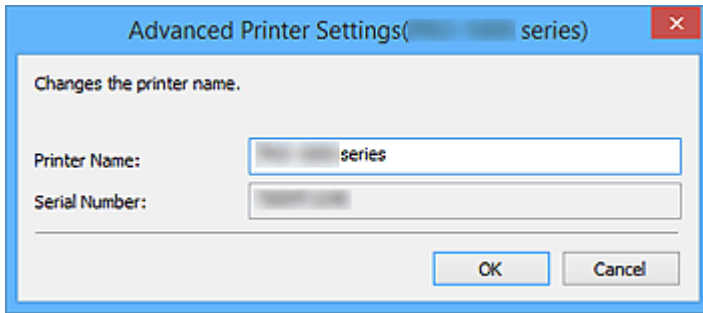
Unregister

Cancels the registration of the printer specified in **List of Displayed Printer**.

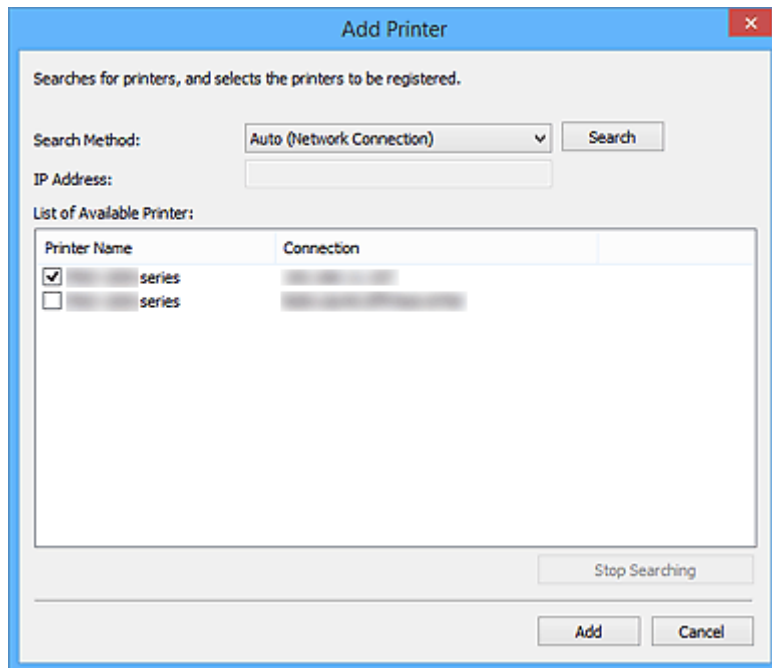
Advanced Settings...

Click to display the **Advanced Printer Settings** dialog box for changing the printer's display name or checking the printer's serial number.

To change the printer's display name, enter the desired name in **Printer Name**, and then click **OK**.



Add Printer Dialog Box



Search Method

Select a printer search method.

Select **Auto (Network Connection)**, **IPv4**, **IPv6**, or **USB**.

IP Address

If **IPv4** or **IPv6** is selected for **Search Method**, enter the printer's IP address.

Search

Click to search for printers.

List of Available Printer

Displays a list of found printers.

Select the checkbox(es) to select the printer(s).

►►► Note

- If you select **Auto (Network Connection)** and search, each of a printer's IP addresses (IPv4 and IPv6) may appear as a different printer in the search result. Select either one and add.

- If printers connected over a network do not appear, make sure the computer being used for search and the printer are on the same subnet. If not on the same subnet, check the printer's IP address, and then specify **IPv4** or **IPv6** and search.


Stop Searching

Stops the printer search.

Add

Click to add the printer(s) selected in **List of Available Printer**.

Notification Area Icon

Use  (Quick Utility Toolbox) in the notification area on the desktop to fully utilize Quick Utility Toolbox.

Click to display the Main Screen.

Right-click to display a menu for the following settings.

About

Displays the version information.

Use the displayed dialog box to change the language to be used in the application. The change will be reflected after restarting the application.

Display Guide Message

Shows or hides guide messages.

When a guide message appears, select the **Do not show this message again** checkbox to hide the guide message thereafter.

Quit Quick Utility Toolbox

Exits Quick Utility Toolbox.

Note

- Clicking **Close** in the Main Screen does not exit the application; the icon remains in the notification area. To exit the application completely, exit from this menu.

Destination Folder Settings

- ▶ **Setting the Destination**
- ▶ **Folder Setting Utility Window**
 - **Add Destination Folder/Edit Destination Folder Dialog Box**

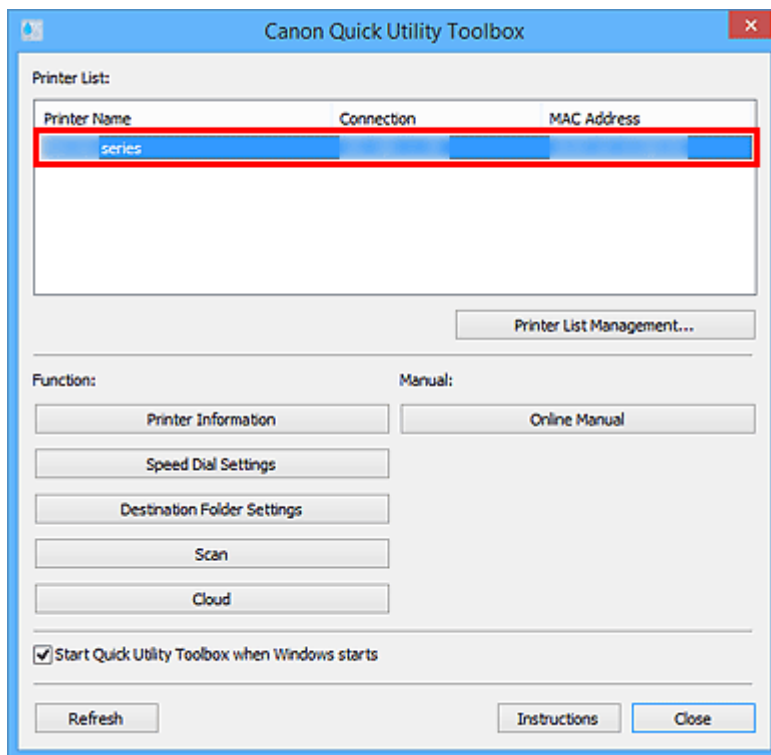
Setting the Destination

You can set a network folder as the destination for images scanned from the operation panel of the printer and for received fax data.

- [Adding Destination Folders](#)
- [Setting the Auto Save Location for Fax Data](#)

Adding Destination Folders

1. Open the Main Screen.
2. Select printer you want to use from **Printer List**.

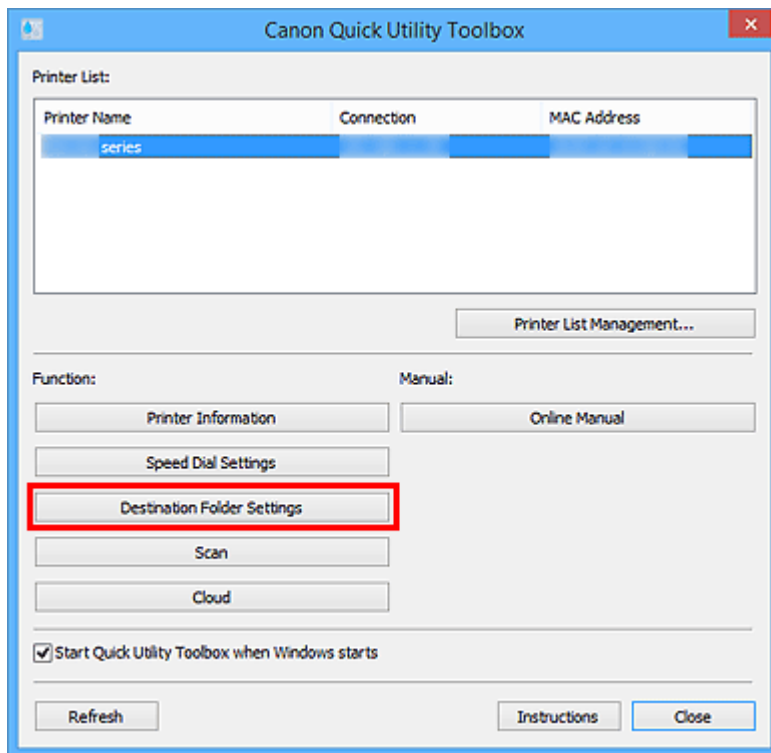


Items corresponding to the selected printer appear in **Function**.

▶▶▶ Note

- If your printer is not displayed in **Printer List**, click **Refresh**, or click **Printer List Management...** and add the printer in the displayed [Printer Management dialog box](#).

3. Click **Destination Folder Settings** from the items displayed in **Function**.

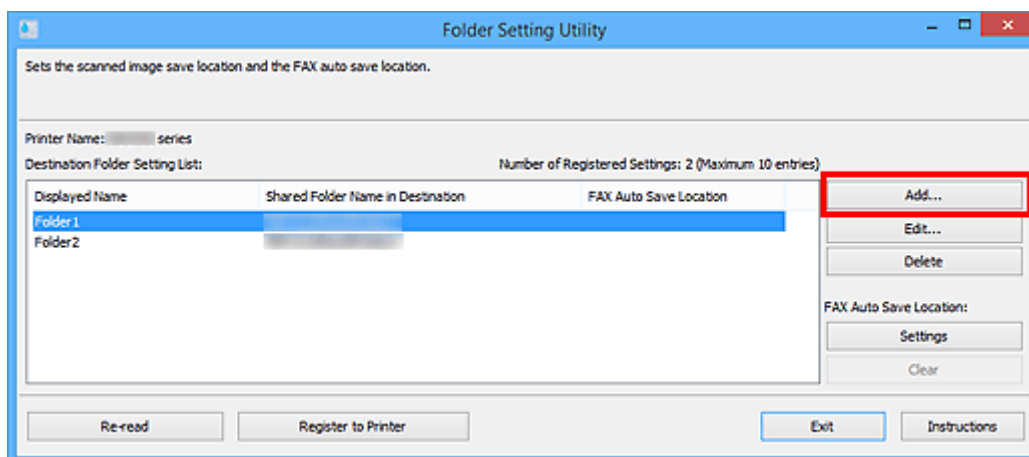


The **Folder Setting Utility** window appears.

➤➤➤ Note

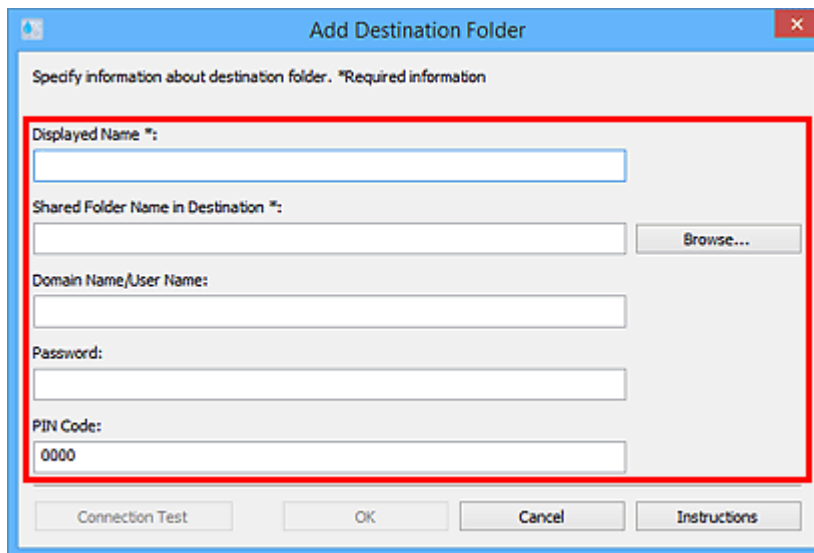
- A password entry screen may appear before the **Folder Setting Utility** window appears. If it appears, enter the administrator password set to the printer, and then click **OK**. If you are not sure, contact the administrator. For the password, see Administrator Password.

4. Click **Add...**



The **Add Destination Folder** dialog box appears.

5. Enter **Displayed Name**, **Shared Folder Name in Destination**, and other information.



►►► Important

- **Displayed Name** and **Shared Folder Name in Destination** are required entry fields.

►►► Note

- Refer to "[Add Destination Folder/Edit Destination Folder Dialog Box](#)" for notes on entering each field.

6. Click **Connection Test**.

Check if you can connect to the specified folder.

►►► Important

- Make sure of the following before performing **Connection Test**.
 - The printer is turned on
 - The printer and computer are connected to the network
 - Another software or user is not using the printer
 - An error is not displayed on the operation panel of the printer

7. Check the message, then click **OK**.

8. Click **OK** in the **Add Destination Folder** dialog box.

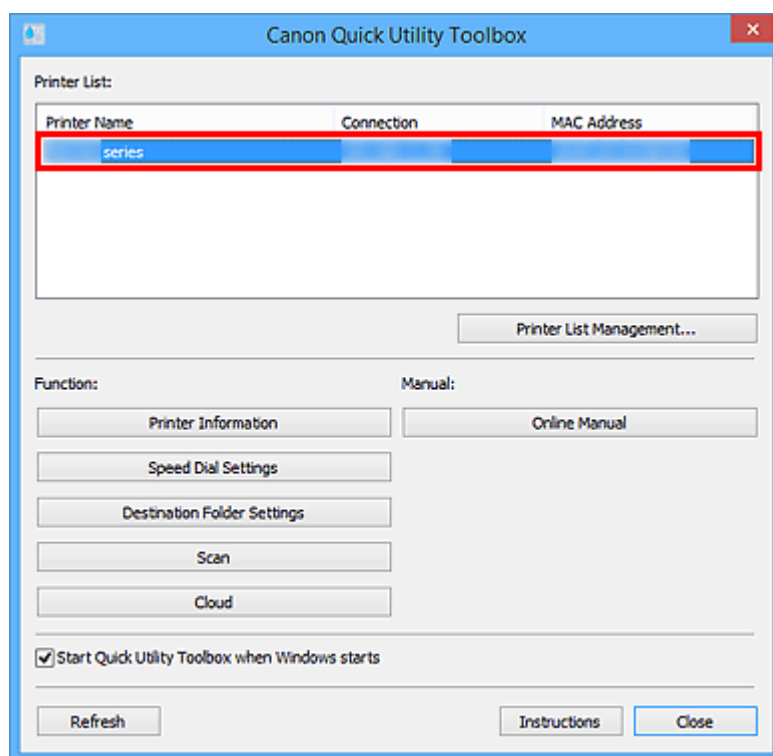
9. Click **Register to Printer**.

10. Check the message, then click **OK**.

Setting the Auto Save Location for Fax Data

Set one of the folders displayed in **Destination Folder Setting List** as the auto save location for fax data.

1. Open the Main Screen.
2. Select printer you want to use from **Printer List**.

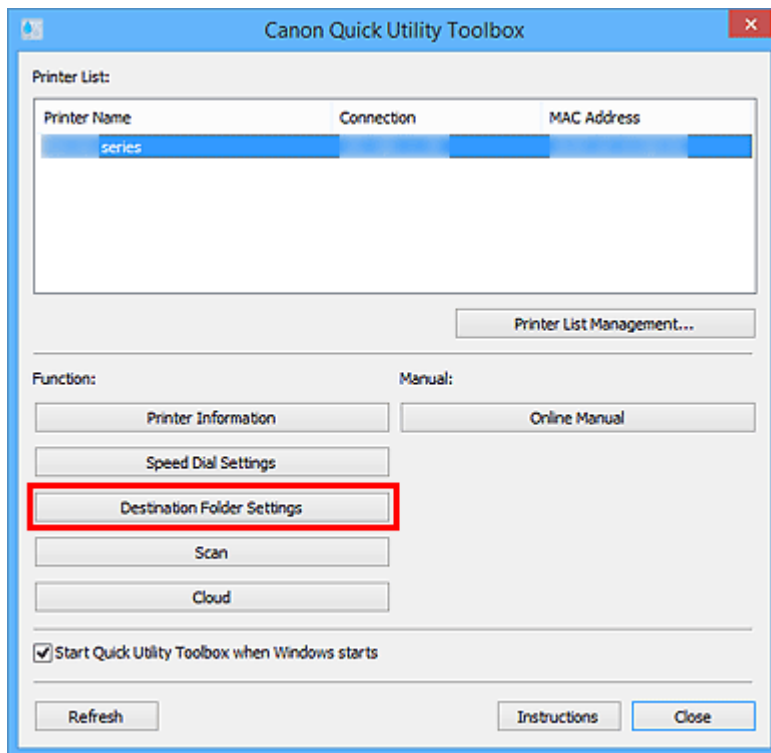


Items corresponding to the selected printer appear in **Function**.

➤➤➤ Note

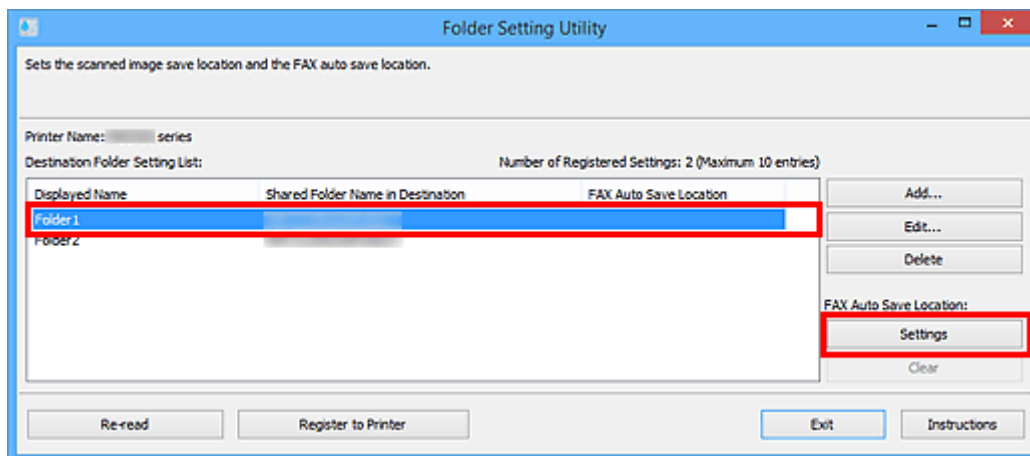
- If your printer is not displayed in **Printer List**, click **Refresh**, or click **Printer List Management...** and add the printer in the displayed [Printer Management dialog box](#).

3. Click **Destination Folder Settings** from the items displayed in **Function**.



The **Folder Setting Utility** window appears.

4. Select one of the folders you want to use as the save location from **Destination Folder Setting List**, then click **Settings**.



➤➤➤ Note

- When no folder is displayed in **Destination Folder Setting List**, add a destination folder.
 - [Adding Destination Folders](#)
- If a PIN code entry screen appears, enter the code.

5. Check the message, then click **OK**.

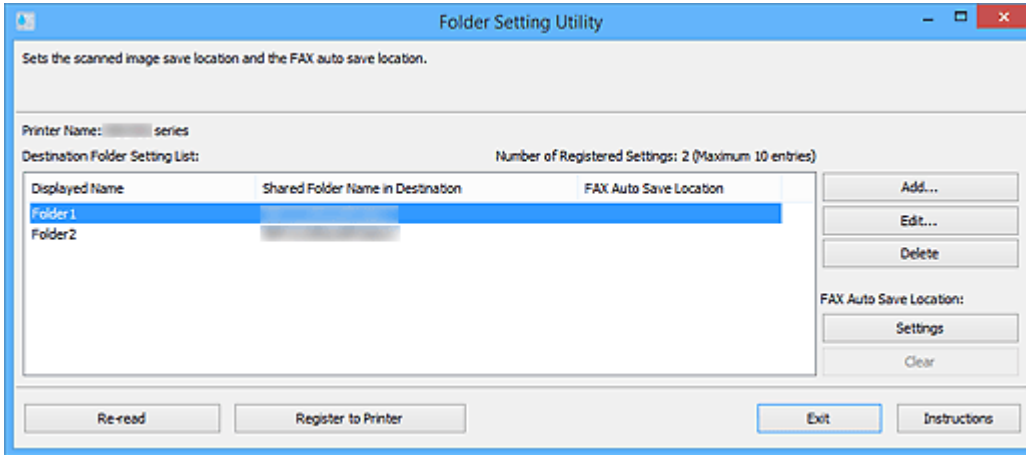
✔ (Checkmark) appears in **FAX Auto Save Location** of the set folder.

6. Click **Register to Printer**.
7. Check the message, then click **OK**.

Folder Setting Utility Window

You can set a network folder as the destination for images scanned from the operation panel of the printer and for received fax data.

To display the **Folder Setting Utility** window, click **Destination Folder Settings** in the Main Screen.



Printer Name

Displays the printer name selected in the [Main Screen](#).

Destination Folder Setting List

Displays the list of destination folders for data.

Add...

Click to display the [Add Destination Folder dialog box](#) in which you can add destination folders.

Edit...

Click to display the [Edit Destination Folder dialog box](#) for editing the **Displayed Name**, **Shared Folder Name in Destination**, and other information of the folder specified in **Destination Folder Setting List**.

➤➤➤ Note

- When editing a folder to which PIN code is set, a PIN code entry screen appears.

Delete

Deletes the folder specified in **Destination Folder Setting List**.

FAX Auto Save Location

Settings

Sets the folder specified in **Destination Folder Setting List** as the auto save location for fax data.

➤➤➤ Note

- When setting a folder to which PIN code is set, a PIN code entry screen appears.

Clear

Removes the folder specified in **Destination Folder Setting List** from the auto save location for fax data.

Re-read

Reads the destination folder setting information from the printer again.

»» Important

- Make sure of the following before clicking **Re-read**.
 - The printer is turned on
 - The printer and computer are connected to the network
 - Another software or user is not using the printer
 - An error is not displayed on the operation panel of the printer

Register to Printer

Registers the settings to the printer.

»» Important

- Make sure of the following before clicking **Register to Printer**.
 - The printer is turned on
 - The printer and computer are connected to the network
 - Another software or user is not using the printer
 - An error is not displayed on the operation panel of the printer

Exit

Closes the **Folder Setting Utility** window.

Instructions

Opens this guide.

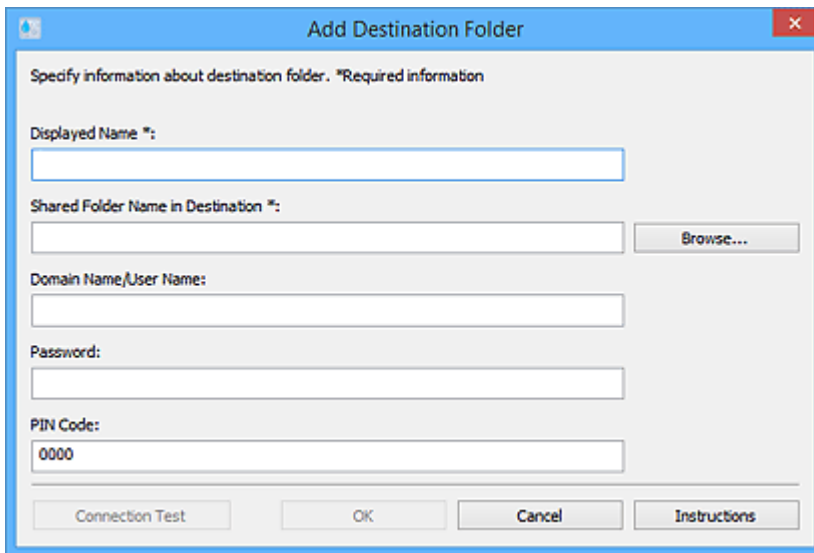
Related Topic

- [Setting the Destination](#)

Add Destination Folder/Edit Destination Folder Dialog Box

Add or edit folders in which to save images scanned from the printer's operation panel and received fax data.

To display the **Add Destination Folder** or **Edit Destination Folder** dialog box, click **Add...** or **Edit...** in the **Folder Setting Utility** window.



Displayed Name

Enter the name you want to display on the printer's operation panel.

►►► Important

- **Displayed Name** is a required entry field.
- Use only the characters that can be entered on the operation panel of your printer.

Shared Folder Name in Destination

Specify the destination folder for data. Click **Browse...**, and then select a folder.

►►► Important

- **Shared Folder Name in Destination** is a required entry field.
- Enter a folder such as a shared network folder in the form of "\\server name\folder name". Separate the server name and folder names with backslashes.

Domain Name/User Name

Enter the domain name and user name with which to access the destination folder for data.

►►► Note

- If a domain name is required, enter it in the form of "domain name\user name". Separate the domain name and user name with a backslash.
- If you don't know the domain name or user name, contact the network (server) administrator.

Password

Enter the password with which to access the destination folder for data.

»» Note

- If you don't know the password, contact the network (server) administrator.

PIN Code

PIN code is a security code for accessing the folder selected in **Shared Folder Name in Destination** on the printer's operation panel. Set it to prevent unauthorized access or changes to the settings by a third party.

»» Important

- Enter at least four characters using letters, numbers and/or symbols.
- The default value (0000) is set. When not specifying the PIN code, delete "0000."
- When setting the PIN code, be sure to write it down for future reference since you will need to enter it in cases such as setting the folder as the destination folder for received fax data or for data scanned from the operation panel of the printer.
- If you have forgotten the PIN code, delete the folder from **Destination Folder Setting List**, then add it again.
- When editing the destination folder, enter the PIN code that you set at the time of adding the folder.

Connection Test

Click to check for a connection to the folder in which to save data.

»» Important

- Make sure of the following before performing **Connection Test**.
 - The printer is turned on
 - The printer and computer are connected to the network
 - Another software or user is not using the printer
 - An error is not displayed on the operation panel of the printer

OK

Click to apply the addition and edits.

»» Important

- If **Connection Test** has not been clicked, the utility automatically checks if it can connect to the destination folder for data.

Make sure of the following before clicking **OK**.

- The printer is turned on
- The printer and computer are connected to the network
- Another software or user is not using the printer
- An error is not displayed on the operation panel of the printer

Instructions

Opens this guide.

Troubleshooting

An Authentication Screen Appears after Selecting Printer Information


When an authentication screen appears after selecting **Printer Information**, you need to enter the user name and password. For details, see Administrator Password.

Messages Displayed in Status and Solutions

Message	Solution
Not Found: Cannot communicate with the printer because the printer driver has been allocated to the connection.	A printer driver that does not support Quick Utility Toolbox is allocated to the connection. Delete the corresponding printer driver.
Not Found: Failed to acquire printer information.	Make sure your printer and the computer are connected correctly, and then click Unregister to delete the printer. After that, add the printer again.
The printer is already registered.	The same printer is already registered. Click Unregister to delete the printer.
The printer is already registered with a different connection.	The same printer is registered with multiple connections. Check Connection for a printer registered with an unused connection, and then click Unregister to delete it.
The printer connection has been changed. Check the connection status.	A different printer is connected to the registered connection. Click Unregister to delete the printer, and then add the printer again.

How to Check the Version - Quick Utility Toolbox -

You can check the version of Quick Utility Toolbox by following the steps below.

1. Start Quick Utility Toolbox.
2. Right-click  (Quick Utility Toolbox) in the notification area on the desktop, then click **About** in the displayed menu.

The version information appears.

