

MultiPASS™ MP390 Set-Up Sheet

READ THIS SHEET FIRST

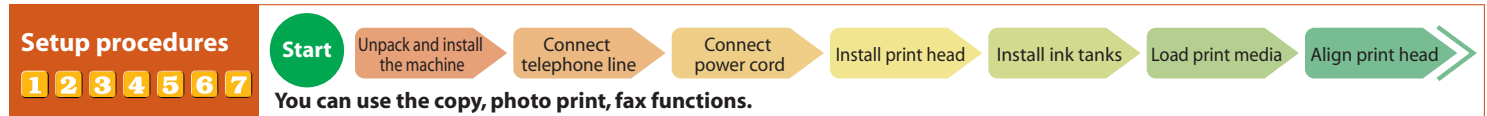
Thank you for purchasing the Canon MultiPASS MP390. To prepare your machine for use, please follow the instructions in this *Set-Up Sheet* before referring to any other documentation.



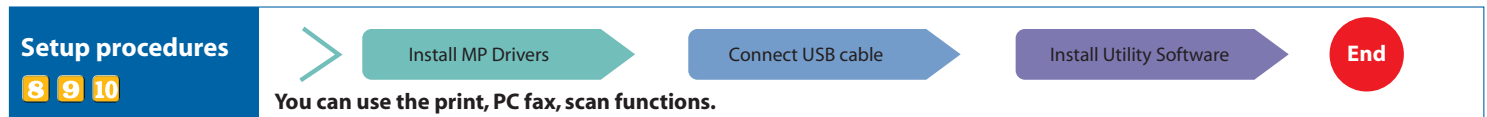
IMPORTANT Do not connect the USB cable until **9**, "Connect the USB cable."

Setup flow

This side explains the setup procedure for use without connecting to a computer. <Check packed contents, install and adjust machine>



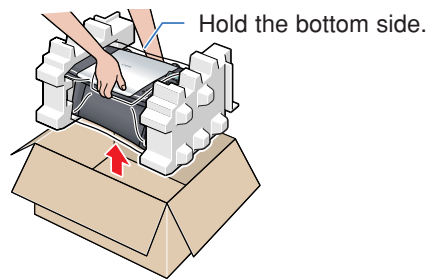
These steps explain the setup procedure for use by connecting to a computer. <Install MP Drivers and Utility Software>



1

Unpack and install the machine.

1 Carefully remove all items from the box.



NOTE

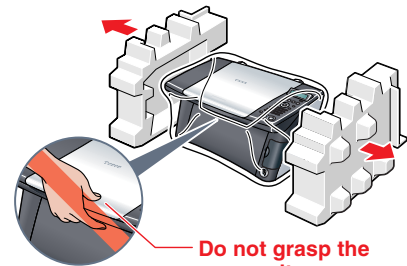
When removing the machine from the box, handle it with care and do not drop it.

3 Place the machine on a flat surface.



- Be sure to hold the machine by the sides. Do not place anything in front of the machine.

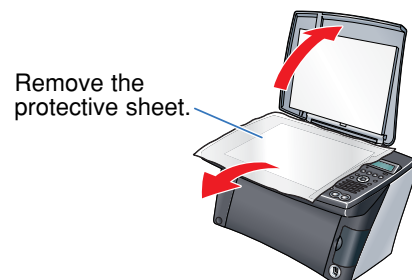
2 Remove the protective material.



NOTE

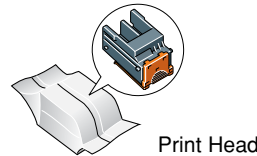
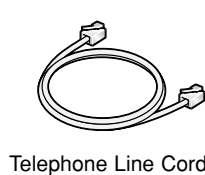
After removing the protective material, do not lift the machine by grasping the scan unit.

4 Remove all shipping tape from the exterior of the machine.



- After removing the tape, remove the protective sheet.

Check the contents.



Power Cord
Set-Up Sheet
User's Guide



Setup
CD-ROM

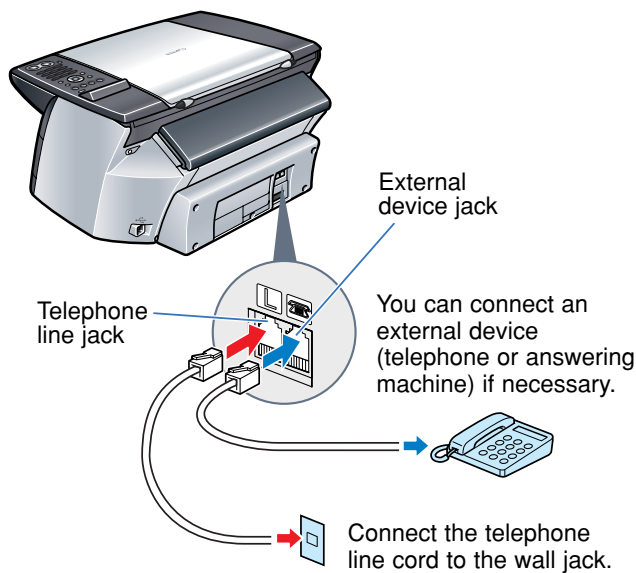
The Setup CD-ROM contains the MP Drivers, as well as the electronic manuals *Software Guide* and *Photo Application Guide*. Please read these guides.

NOTE


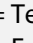
A printer cable is not included. You must purchase a USB cable (less than 16 ³/₈ ft./5 m) to connect your machine to a computer.

2

Connect the telephone line and any necessary external device.



Connect external devices as follows:

-  = Telephone line jack
-  = External device jack

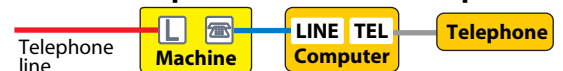
• Telephone or answering machine



• Telephone and answering machine



• Built-in computer modem and telephone



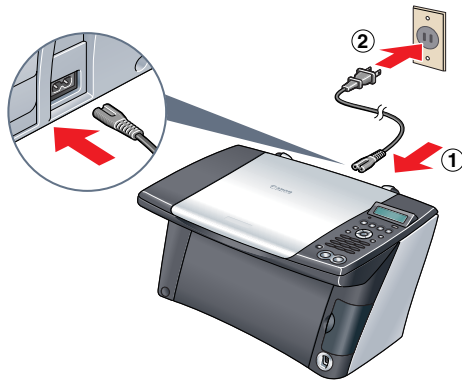
NOTE

- Before using your machine, you need to make sure it is set for your telephone line type. For details, see page 83 of the *User's Guide*.
- Refer to the receive mode instructions after the unit is powered on. For details on the receive modes, refer to page 104 of the *User's Guide*.

3

Connect the power cord.

1 Connect the power cord.



- ① Connect one end of the power cord to the rear of the machine.
- ② Connect the other end to the AC outlet.

If the message <PUT IN CARTRIDGE> appears, go to procedure 4, "Install the print head."

PLEASE WAIT

▼ Approx. 15 seconds

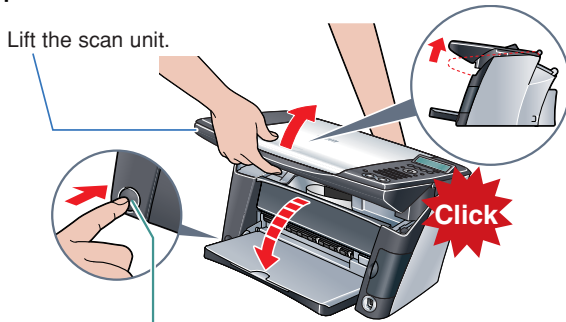
PUT IN CARTRIDGE

4

Install the print head.

1 Lift the scan unit until it locks into place.

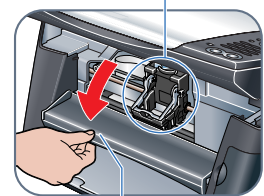
If there is a protective sheet, remove the protective sheet.



If the paper output tray does not open, press the Open button to open the paper output tray.

2 Open the inner cover.

② The print head holder moves to the center. Install the print head here.

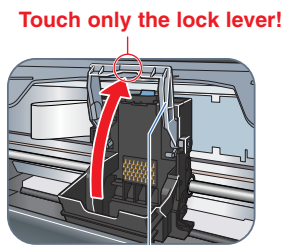


① Open the inner cover.

NOTE

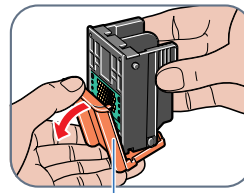
If you open the scan unit while the machine is turned ON, the paper output tray will open.

3 Raise the lock lever.

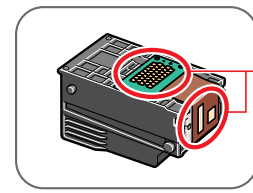


Raise this securely.

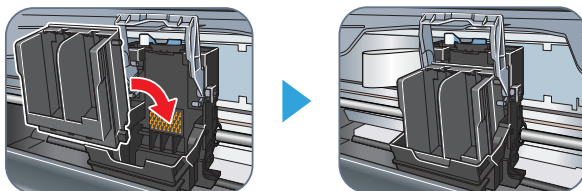
4 Prepare the print head.



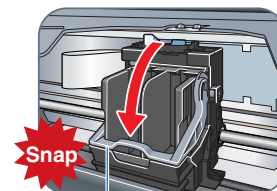
Remove the protective cap and discard it.



5 Insert the print head.



6 Lower the lock lever.

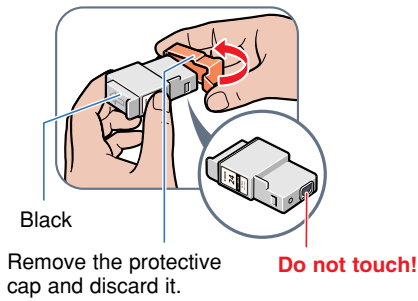


Slowly lower the lock lever until you hear a "snap" sound and it locks into place.

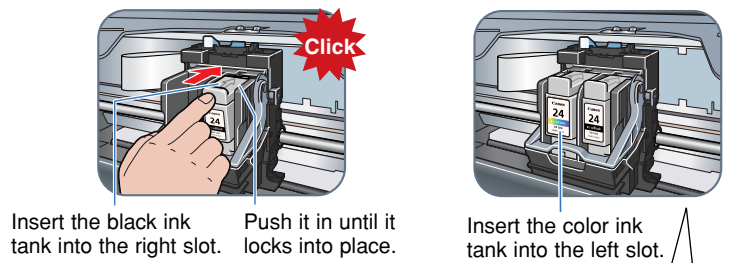
5

Install the ink tanks.

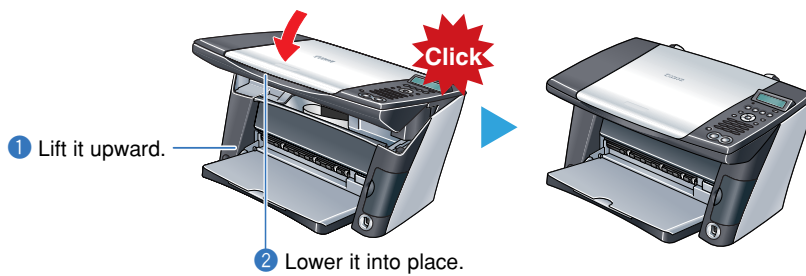
1 Prepare the ink tanks.



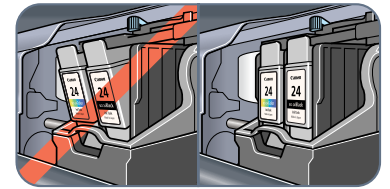
2 Insert the ink tanks.



3 Close the inner cover ① and the scan unit ②.



NOTE



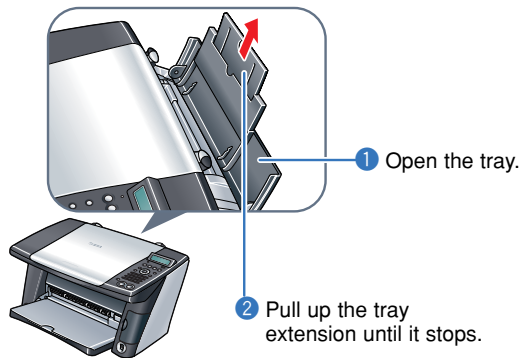
Incorrectly installed

Correctly installed

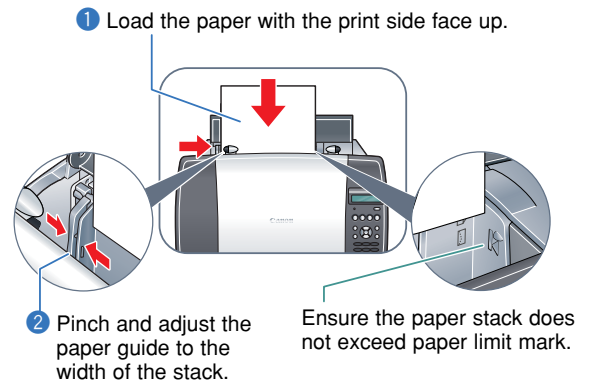
6

Load the paper.

1 Open the multi-purpose tray.



2 Load the paper.



3 Pull out the tray extension of the paper output tray.

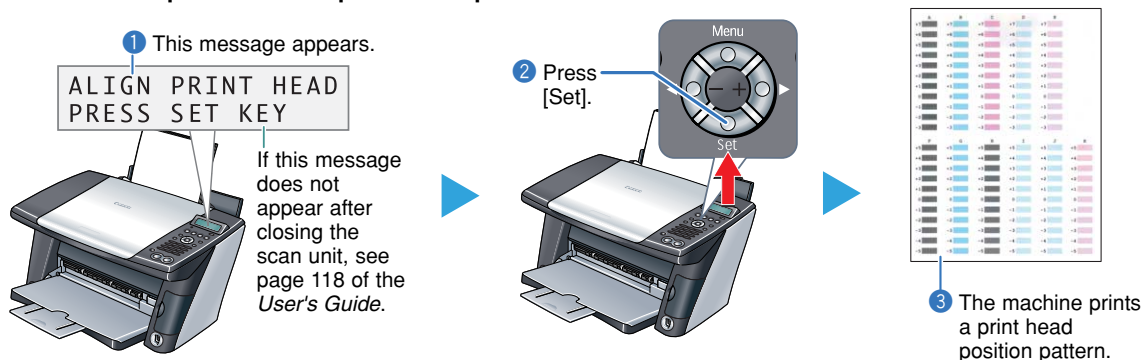


7

Align the print head from the operation panel.

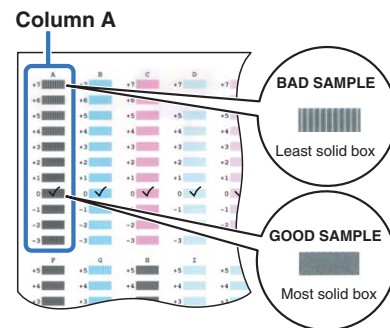
Be sure to align the position of the print head to ensure print quality.

1 Print the print head position pattern.



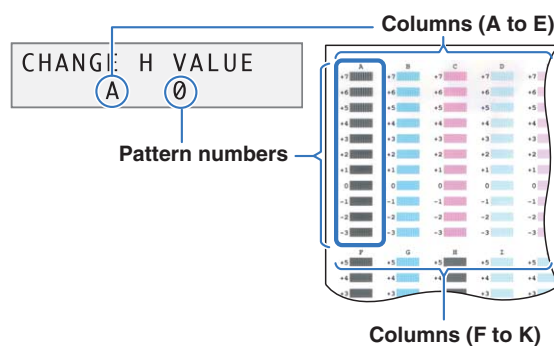
2 Enter checkmarks in the printed patterns.

From column A to column K on the printout, place a checkmark by the pattern that shows the most solid box (least number of white stripes).

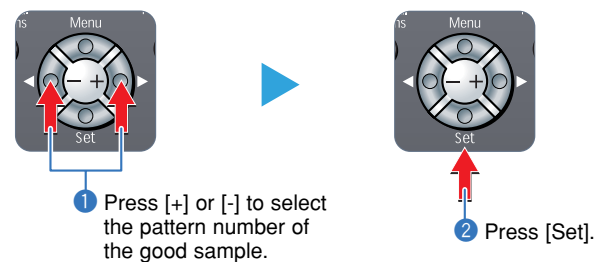


3 Align the print head.

Using the operation panel, enter the value of the pattern you checked in step 2, then press [Set].



Press [+] to increase the number by one digit.
Press [-] to decrease the number by one digit.



4 Repeat step 3 for columns B through K.



You have completed installation and alignment.

If you are connecting the machine to a computer for use, see **8**, **9** and **10** for instructions on installing the software.

8

Install the MP Drivers.

The MP Drivers must be installed on the hard disk of your computer in order to print from or scan images to the computer. In addition to installing the MP Drivers, install the MP Toolbox. Use the MP Toolbox to attach scanned images to e-mail, save and more.

IMPORTANT

- For detailed system requirements, see page 69 of the *User's Guide*.
- When installing the software in Windows 2000, you must have Service Pack 1 or later version installed.
- When installing the software in Windows 2000, you must log on as Administrator or have Administrator privileges, and when installing the software in Windows XP, you must log on as Administrator.
- If you have an earlier version of the MultiPASS Suite software installed on your computer, uninstall this version before installing the new version. For instructions on uninstallation, see the guides for that version of MultiPASS Suite.
- Close any open software applications, including virus checkers prior to installing the software. For details, see the instruction guide for each software application.

NOTE

If using the machine with USB 2.0 Hi-Speed mode, you must connect it to a computer standard-equipped with a USB 2.0 Hi-Speed interface. For details, see page 70 of the *User's Guide*.

Prepare the Setup CD-ROM (Installation preparation)

Turn ON your computer, and start Windows.

Insert the Setup CD-ROM into the CD-ROM drive.

The setup program should automatically run. If the setup program does not automatically run, click [My Computer], then double-click [setup.exe] or [setup] on the Setup CD-ROM.

IMPORTANT



If the following screen appears, click Cancel. If you have connected the USB cable, disconnect it.

The USB cable is connected.

Perform the following steps.

1. Disconnect the USB cable.
2. Click [Cancel].

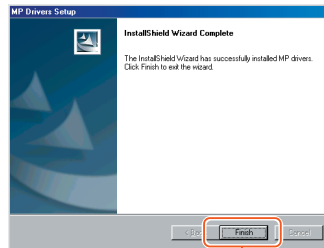
1 Install the MP Drivers. (Use when printing from PC applications or scanning images.)

Follow the on-screen instructions to install the software.

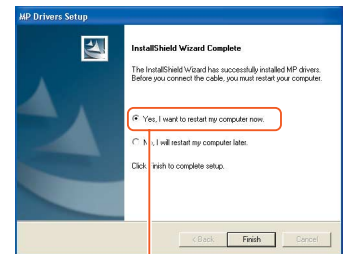
When the InstallShield Wizard Complete window appears, click [Finish].
If you are prompted to restart your computer after the installation, restart your computer.



When restarting your computer is not necessary:



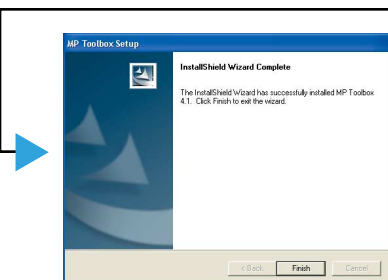
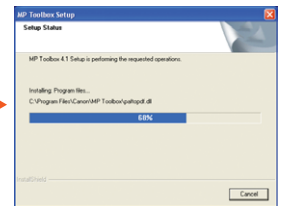
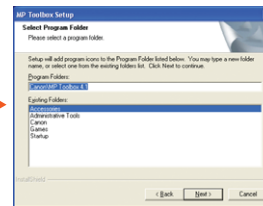
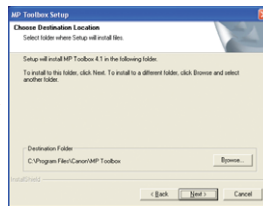
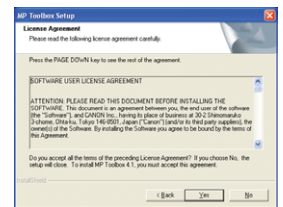
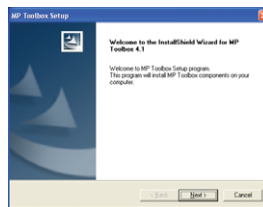
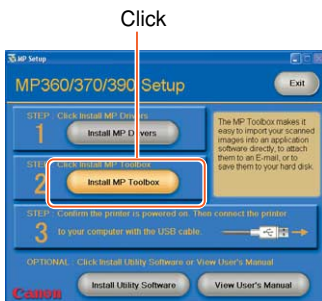
When restarting your computer is necessary:



Select [Yes, I want to restart my computer now.] and then click [Finish].

2 Install the MP Toolbox. (Use to attach scanned documents to an e-mail message or save as PDF files.)

Refer to the following on-screen instructions while installing the software.

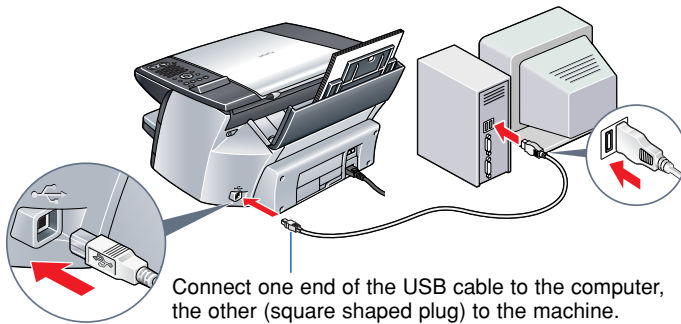


When the InstallShield Wizard Complete window appears, click [Finish].
If you are prompted to restart your computer after the installation, restart your computer.

3 Connect the USB cable

9

Connect the USB cable.



Connect one end of the USB cable to the computer, the other (square shaped plug) to the machine.

Make sure both your machine and computer are turned ON. When connecting the USB cable, the computer will automatically detect and install necessary information. Please wait a few moments. Click [OK] if you are prompted to restart your computer.

In Windows 2000, the machine may not be set as [Set As Default Printer]. For details, see the *Software Guide*.

10

Install the utility software.

Utility software is also stored on the Setup CD-ROM. You can choose to install the utility software at this stage or install it later.

● Outline of the utility software

Easy-PhotoPrint / Easy PhotoPrint Plus	Easy-PhotoPrint allows you to make high-quality borderless (full page) prints easily by simply selecting the paper type and image taken with your digital camera. Easy-PhotoPrint Plus allows easy Red-eye reduction and Digital Face Smoothing.
Easy-WebPrint	Easy-WebPrint allows you to print a whole web page from Internet Explorer quickly and easily.
ScanSoft OmniPage SE	ScanSoft OmniPage SE is an OCR (Optical Character Recognition) program which can convert the text in books or newspaper characters into editable text.
ArcSoft PhotoStudio	ArcSoft PhotoStudio allows you to import images from your digital camera to enhance them in various ways, blend them together, convert their data format, or add them to an album.
Adobe Acrobat Reader	The Adobe Acrobat Reader displays documents in PDF (Portable Document Format) form.

The *Photo Application Guide* is contained on the Setup CD-ROM. For details, see page 163 of the *User's Guide*.

● Install the utility software.

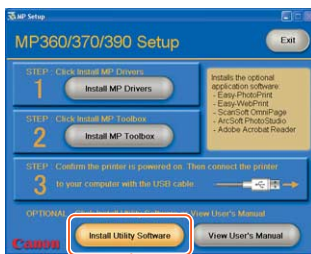
Click [Install Utility Software].

Select the software to install.

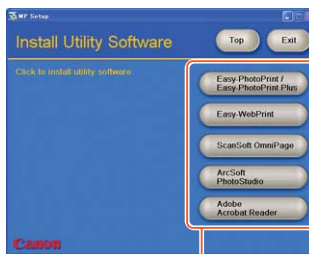
When the InstallShield Wizard Complete window appears, click [Finish].

If you are prompted to restart your computer after the installation, restart your computer. This procedure varies depending on the application software.

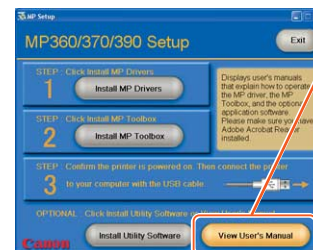
To view guides



Click



Click



Click this to read the guides stored on the Setup CD-ROM, such as the *Photo Application Guide*.

You now have completed installation of the software.

For details of the operations, see the *User's Guide*.



When installation of the MP Drivers completes, the icon appears on the desktop. You can register your machine online by double-clicking this icon.