

EOS D30 Software Starter Guide

To Download Images to a Computer

for
Windows

for
Macintosh

Install the Software

p. 6

p. 62

Connect the Camera to a Computer

p. 8

p. 64

Start the Software and Download Images

p. 18

p. 68

Start ZoomBrowser EX (Windows) or ImageBrowser (Macintosh computers) and load images onto the computer.

- This guide explains the installation method and features of the software for loading and processing images on a computer that have been shot with a Canon digital camera.
- There are precautions that you should take before installing the USB driver software. Ensure that you read this guide before installing it.
- Read the agreement in this guide before using the software on the supplied CD-ROM. By using the software, you agree to be bound by the terms of the agreement.

READ CAREFULLY BEFORE USING!
CANON SOFTWARE LICENSE AGREEMENT

IMPORTANT - READ THIS AGREEMENT BEFORE USING THE SOFTWARE ON THE CD-ROM IN THIS BOX. BY USING THE SOFTWARE, YOU AGREE TO BE BOUND BY THE TERMS OF THIS AGREEMENT.

This is a license agreement (the "Agreement") between you and Canon Inc. ("Canon").

IF YOU DO NOT AGREE TO THE TERMS AND CONDITIONS OF THIS AGREEMENT, DO NOT USE THE SOFTWARE PROGRAM ON THE CD-ROM AND THE USER MANUAL IN THIS BOX (COLLECTIVELY, THE "SOFTWARE") AND RETURN THE SOFTWARE WITHIN 30 DAYS FROM THE DATE OF PURCHASE TO YOUR POINT OF PURCHASE FOR A REFUND.

In consideration of the right to use the SOFTWARE, you agree to abide by the terms and conditions of this Agreement.

1. LICENSE: Canon grants you the non-exclusive right to use the SOFTWARE only on a single computer. You may physically transfer the SOFTWARE from one computer to another provided that the SOFTWARE is used on only one computer at a time. You shall not install or use the SOFTWARE on a network, multiple CPU, multiple site arrangement, or any other hardware configuration where the SOFTWARE is accessible to more than one CPU or to more than one user.

YOU SHALL NOT ASSIGN, SUBLICENSE, RENT, LEASE, LOAN, CONVEY OR OTHERWISE USE, TRANSFER, COPY, TRANSLATE, CONVERT TO ANOTHER PROGRAMMING LANGUAGE, ALTER, MODIFY, DECOMPILE OR DISASSEMBLE THE SOFTWARE, IN WHOLE OR IN PART, EXCEPT AS EXPRESSLY PROVIDED IN THIS AGREEMENT.

2. BACK-UP COPY: You may make one copy of the SOFTWARE solely for back-up purposes, or copy the SOFTWARE onto the permanent storage device (e.g. a hard disk) of your computer and retain the original for back-up purposes. Any other copying of the SOFTWARE is a violation of this Agreement. You must reproduce and include the copyright notice on the back-up copy.
3. SUPPORT AND UPDATES: Canon is not responsible for providing maintenance or support for use of the SOFTWARE. No updates, fixes or support will be made available for the SOFTWARE.
4. LIMITED WARRANTY AND LIMITATION OF LIABILITY: It is your responsibility to choose, maintain and match the hardware and software components of your computer system. Thus Canon does not guarantee uninterrupted service or correction of errors or that the functions or performance of the SOFTWARE will meet your requirements. THE SOFTWARE IS LICENSED ON AN "AS IS" BASIS AND WITHOUT WARRANTY OF ANY KIND. The CD-ROM storing the SOFTWARE is warranted only against defective material under normal use for a period of ninety (90) days after purchase from an authorized Canon dealer as evidenced by your sales receipt. Your sole remedy for a defective CD-ROM shall be replacement of the same without charge when returned by you at your expense to your point of purchase and proven to be defective upon inspection. The Replacement CD-ROM will be warranted for the remainder of the original ninety (90) day warranty period of the defective CD-ROM. The limited warranty does not apply if the failure of the CD-ROM resulted from accident, abuse or misapplication of the SOFTWARE and shall not extend to anyone other than the original user of the SOFTWARE.

EXCEPT AS SPECIFICALLY SET FORTH IN THIS PARAGRAPH 4, CANON, CANON'S SUBSIDIARIES, DISTRIBUTORS AND DEALERS DISCLAIM ALL WARRANTIES, EXPRESS OR IMPLIED, INCLUDING ANY WARRANTY OF MERCHANTABILITY OR FITNESS FOR A PARTICULAR PURPOSE, WITH RESPECT TO THE SOFTWARE.

NEITHER CANON NOR ANY OF CANON'S SUBSIDIARIES, DISTRIBUTORS OR DEALERS IS LIABLE FOR ANY DAMAGES HOWSOEVER CAUSED, INCLUDING WITHOUT LIMITATION, DIRECT, CONSEQUENTIAL OR INCIDENTAL LOSS OR DAMAGE INCLUDING LOSS OF PROFITS, EXPENSE OR INCONVENIENCE HOWSOEVER CAUSED OR ARISING OUT OF THE SOFTWARE OR THE USE THEREOF.

NEITHER CANON, NOR ANY OF CANON'S SUBSIDIARIES, DISTRIBUTORS OR DEALERS SHALL HAVE ANY OBLIGATION TO INDEMNIFY YOU AGAINST ANY CLAIM OR SUIT BROUGHT BY A THIRD PARTY ALLEGING THAT THE SOFTWARE OR THE USE THEREOF INFRINGES ANY INTELLECTUAL PROPERTY OF SUCH THIRD PARTY.

5. **TERM:** This Agreement is effective upon your using the SOFTWARE and remains in effect until expiration of all copyright interests in the SOFTWARE unless earlier terminated. You may terminate this Agreement by destroying the SOFTWARE. This Agreement will also terminate without notice to you if you fail to comply with any of the terms of this Agreement and you must then promptly return the SOFTWARE. In addition, Canon may enforce its other legal rights.
6. **U.S. GOVERNMENT RESTRICTED RIGHTS NOTICE:** The SOFTWARE is provided with restricted rights. Use, duplication or disclosure is subject to restrictions as set forth in either subparagraph (c) (1) (ii) of the Rights in Technical Data and Computer software clause at DFARs 252.227-7013 or subparagraph (c) (1) and (2) of the Commercial Computer Software Restricted Rights Clause at FAR 52.227-19, as applicable.
7. **SEVERABILITY:** In the event that any provision of this Agreement is declared or found to be illegal by any court or tribunal of competent jurisdiction, such provision shall be null and void with respect to the jurisdiction of that court or tribunal and all the remaining provisions of this Agreement shall remain in full force and effect.
8. **CONTROLLING LAW:** The terms of this Agreement as it relates to purchases of the Software in the United States of America shall be governed and construed in all respects in accordance with the laws and regulations of the State of New York, without reference to choice of law principles. The terms of this Agreement as it relates to purchases of the Software in Canada shall be governed by the laws of the province of Ontario.
9. **OWNERSHIP:** All rights, including but not limited to copyrights and trade secret rights, to the SOFTWARE belong to Canon, its affiliated corporations and third party licensors. Your use of the SOFTWARE is subject to the United States, Canada and other applicable copyright and trademark laws and nothing in this Agreement constitutes a waiver of the rights of Canon, its affiliated corporations and third party licensors under such laws. Nothing contained in Paragraph 1 shall be construed to give Canon any ownership rights in any images, graphics or textual material that you save in connection with the Software.
10. **ACKNOWLEDGEMENT:** BY USING THE SOFTWARE, YOU ACKNOWLEDGE THAT YOU HAVE READ THIS AGREEMENT, UNDERSTOOD IT, AND AGREE TO BE BOUND BY ITS TERMS AND CONDITIONS. YOU ALSO AGREE THAT THIS AGREEMENT IS THE COMPLETE AND EXCLUSIVE STATEMENT OF AGREEMENT BETWEEN YOU AND CANON CONCERNING THE SUBJECT MATTER HEREOF AND SUPERSEDES ALL PROPOSALS OR PRIOR AGREEMENTS, VERBAL OR WRITTEN, AND ANY OTHER COMMUNICATIONS BETWEEN THE PARTIES RELATING TO THE SUBJECT MATTER HEREOF. NO AMENDMENT TO THIS AGREEMENT SHALL BE EFFECTIVE UNLESS SIGNED BY A DULY AUTHORIZED OFFICER OF CANON.

Introduction

Thank you for purchasing a Canon digital camera. This guide explains the software used with the EOS D30.

Note


- This software can also be used with most other Canon digital cameras including the PowerShot series.

Please refer to the chart on Page 4 for Windows or Page 60 for Macintosh computers for further information.

Safety Precautions

Please read the safety precautions carefully before using this product. Ensure that you use the product correctly according to the procedures described in this guide.

The following safety precautions are intended to instruct you in the safe and correct operation of the product and its accessories to prevent injuries or damage to yourself, other persons and property. Please read and ensure that you understand them before you proceed to the other sections of this guide.

 **Warnings** This mark indicates topics that could lead to death or serious injury if ignored or handled incorrectly.

Warning

- Do not play the supplied CD-ROM(s) in any CD-ROM Player that does not support data CD-ROMs. The extremely loud sound that may result from playing the CD-ROM(s) in an audio CD player (music player) could damage the speakers. It is also possible to suffer hearing losses from listening with headphones to the loud sounds of a data CD-ROM played on a music CD player.

Using the Software on the Windows Platform

Introducing the Software	2
Camera and Software Compatibility	4
System Requirements	5
Installing/Uninstalling the Software	6
Connecting the Camera to a Computer	8
Selecting a Connection Method	8
Connecting to a USB Port	9
Installing the USB Driver	11
Connecting via a CF Card Reader or PC Card Slot	17
Using ZoomBrowser EX the First Time (From Loading to Printing)	18
Using Additional ZoomBrowser EX Functions	24
Displaying Images	24
Organizing Images	28
Erasing Images	29
Saving Computer Images to a CF Card in the Camera	30
Merging Panoramic Images with PhotoStitch	30
Sending Images via E-mail	31
Editing and Applying Special Effects to Images	31
Editing the Print Order Settings (DPOF)	32
Printing Images	33
Shooting with the RemoteCapture Function	36
Converting RAW Images	39
Backing Up Data	41
Loading Images with TWAIN-Compliant Application Programs (Adobe Photoshop, etc.)	42
Setting the Parameters	45
Converting Raw Images	46
Troubleshooting the USB Driver Installation	49
Troubleshooting the Computer Connection	95
Customer Support	96

Introducing the Software

This section introduces the powerful software programs for the Windows platform contained on the CD-ROMs (2) included with the camera.



Canon Digital Camera Solution Disk

ZoomBrowser EX

To load camera images, start ZoomBrowser EX.

Camera Connection Functions

(Also effective for CF card readers or PC card readers)

- Displays camera images.
- Downloads camera images to the computer.
- Loads and saves RAW images in the RAW format.
- Converts and saves RAW images in other formats.
- Saves computer images to a CF card in the camera.
- Connecting to a USB port automatically starts ZoomBrowser EX and displays the camera images.
- Sets the camera parameters.

Image File Management Functions

- Displays, moves, copies or deletes images stored on computer disks.
- Allows simple editing procedures, such as image color adjustments and cropping.
- Displays all the files in a specified folder at once and zooms them in and out to facilitate visual searches.
- Displays files in chronological order in a window that looks like a time tunnel.
- Replays images from the computer one-by-one at full screen size to simulate a slide show.

Image Printing Functions

- Prints multiple images on the same page using the PhotoRecord printing utility.
- Performs auto layouts.
- Allows you to effortlessly place frames or backgrounds around your images for artistic effect.
- Allows you to place titles or captions anywhere on the page.
- Lets you create your own exclusive albums.

Supports PhotoStitch Panoramas

- Allows you to select camera images or images registered with ZoomBrowser EX and start PhotoStitch from within ZoomBrowser EX to merge a series of images into a panorama in a few simple steps.

Supports the Adobe Photoshop LE Photo Retouching Program

- This photo-retouching program can be used to edit and apply special effects to your images if it is installed and started.

Starts Your E-mail Program

- Starts your e-mail program and prepares images as e-mail attachments.
- Allows you to adjust image size and compression settings so that large files can be made smaller for transmission.

PhotoStitch

- Effortlessly merges images that are shot over several frames with a camera.
- Merges any number of images horizontally or vertically, or in a matrix format.
- Makes images with straight lines appear natural not crooked when merged. (Select the wide display format.)
- A 360-degree scene shot in several frames can be merged into a 360-degree image and saved in the QuickTime VR format, making it appear as if you were standing in the middle of the image looking about in all directions.

RemoteCapture

- Connecting via a USB port allows you to release the EOS D30's shutter button from the computer. The images are loaded directly into the computer.
- Connecting via a USB port also allows you to load images directly into the computer by clicking the camera's shutter button.
- Allows interval shooting with custom interval and frame settings.

TWAIN Drivers

Canon Digital Camera USB TWAIN Driver

Canon Digital Camera RS-232C TWAIN Driver

These are the driver utility programs that work within TWAIN-compliant application programs, such as Adobe Photoshop, to load camera images directly into the application program. The USB TWAIN Driver is for connecting via a USB port. The RS-232C TWAIN Driver is for connecting via a serial (COM) port. Install the RS-232C TWAIN Driver if you are going to load images via a CF card reader or PC card reader in Windows 95/Windows NT 4.0. Start either TWAIN driver from a TWAIN-compliant application program. Neither TWAIN driver can be used as a stand-alone program.



Adobe Photoshop LE CD-ROM

Adobe Photoshop LE

- Allows you to edit images, apply special effects, print and create sophisticated graphics for the web.

Camera and Software Compatibility

The Canon Digital Camera Solution Disk contains a number of software programs and drivers. Check the chart below for the compatibility of your particular camera model with each program's special functions.

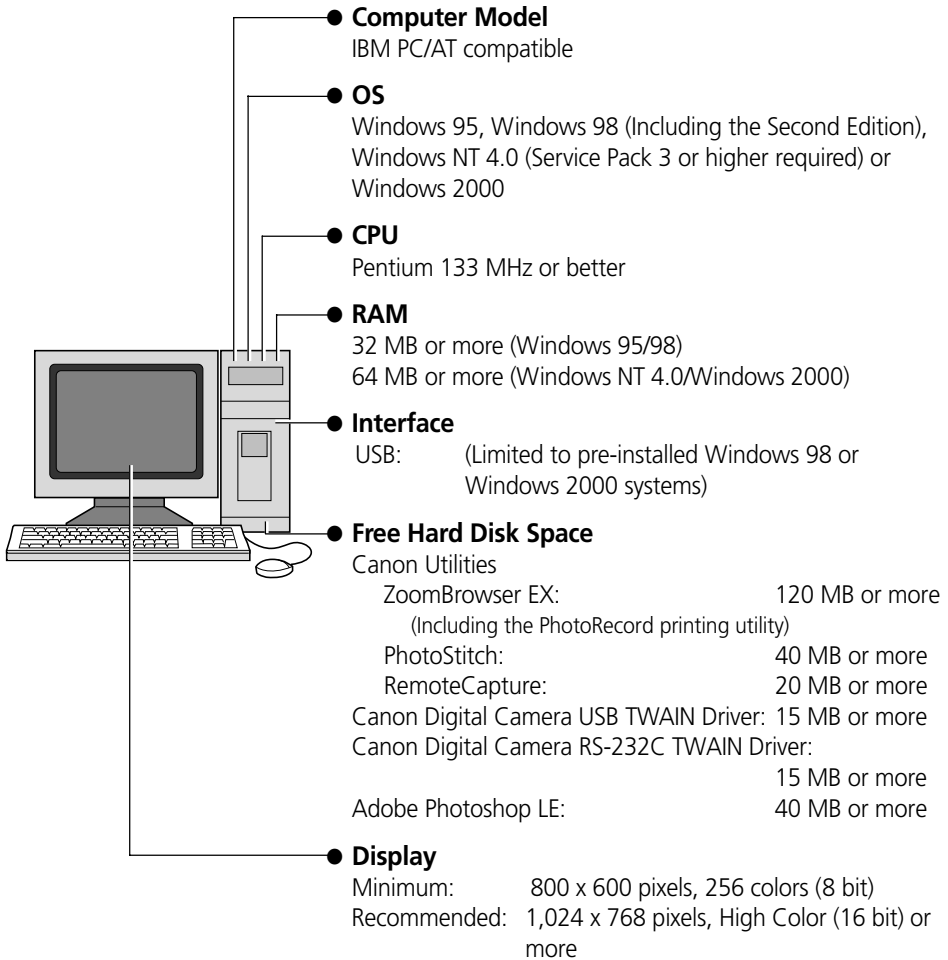
Function		Software		Model							
				EOS D30	DIGITAL IXUS	PowerShot Series					
						S100	S10/S20	A50	Pro70 A5 Zoom A5	350	600
Computer Interface	USB*1	●	●	●	●	–	–	–	–		
	Serial	–	–	–	●	●	●	–	–		
Downloading From Camera	ZoomBrowser EX	●	●	●	●	●	●	–	–		
Downloading From External Card Reader	ZoomBrowser EX TWAIN Driver	●	●	●	●	●	●	●	●		
RAW Image Conversion	ZoomBrowser EX TWAIN Driver	●	–	–	–	●	●	–	●		
Uploading to Camera	ZoomBrowser EX	●	●	●	●	●	–	–	–		
Shooting from the Computer	RemoteCapture*2	●	–	–	–	–	–	–	–		
Editing Camera Print Settings (DPOF)	ZoomBrowser EX	●	●	●	●	●	–	–	–		
Editing Camera Slide Show	ZoomBrowser EX	–	–	–	●	●	●	–	–		
Merging Images Shot in Stitch Assist Mode	PhotoStitch	–	●	●	●	●	●	–	–		

*1 Only compatible with computers with built-in USB ports running pre-installed versions of Windows 98 or Windows 2000.

*2 Only compatible with the USB interface.

System Requirements

The following system requirements must be met to install and operate the software.



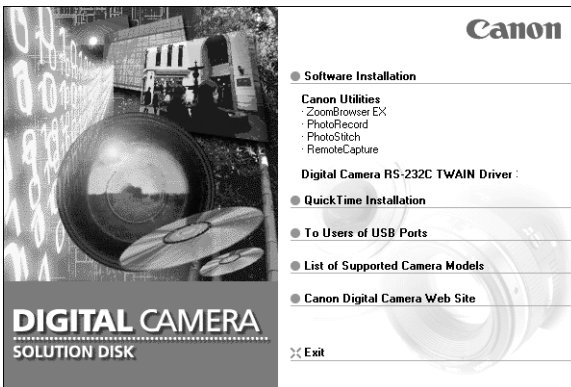
- The cable connection is only supported for computers with Windows 98 or Windows 2000 preinstalled.
- A CD-ROM drive is required to install the software.
- QuickTime 3 or higher is required to save PhotoStitch output in the QuickTime VR format.

Installing/Uninstalling the Software

Installing from the Canon Digital Camera Solution Disk

If you are installing the software onto Windows NT 4.0 or Windows 2000, you must first log on as the administrator and then install the software.

1. Close any programs that are running.
2. Place the Canon Digital Camera Solution Disk in the CD-ROM drive. The installer panel will automatically display.



- If the installer panel does not automatically display, use the following procedures to start it.
 1. Double-click the [My Computer] icon on the desktop, and double-click the CD-ROM icon in the next window.
 2. Double-click the [Setup] icon.
3. Click [Software Installation].
 4. Select the install location and click the [Next] button.
 5. Select the software you wish to install and follow the on-screen instructions to proceed.
 6. Click the [Exit] button when the installation is complete and the installer panel appears again.

Installing from the Adobe Photoshop LE CD-ROM

Place the Adobe Photoshop LE CD-ROM in the drive and double-click the [My Computer], [Photosle], [English], and [Photosle] folders, followed by the [Setup.exe] file. Follow the on-screen instructions to continue with the installation.

You must input the software serial number to install Adobe Photoshop LE. It can be found on the CD-ROM case.

If You Will Be Connecting via a USB Port

You must install a separate USB driver. Please see page 11 or 14 for instructions.

Uninstalling the Software

To remove the installed software, click the Windows [Start] menu and select [Settings], [Control Panel] and [Add/Remove Programs]. ZoomBrowser EX can also be uninstalled by clicking the [Start] menu and selecting [Programs], [Canon Utilities], [ZoomBrowser EX], and [ZoomBrowser EX Uninstall]. (PhotoRecord, PhotoStitch and RemoteCapture can be removed with the same procedures.)

To remove Adobe Photoshop LE, click the Windows [Start] menu and select [Programs], [Adobe], [Photoshop Limited Edition] and [Uninstall Photoshop Limited Edition].

Connecting the Camera to a Computer

Selecting a Connection Method

The following different interfaces and methods can be used to connect the camera to a computer. Once a connection has been established using one of the methods, you can start the software and begin to load images from the camera (→ p. 18, 42).

Use the AC Adapter

- We suggest that you use the AC adapter while the camera is connected to a computer to conserve battery power.

USB Port (→ p. 9)

The USB interface can start the image loading software automatically.

USB Cable Connector Shapes

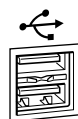
Camera End



Computer End



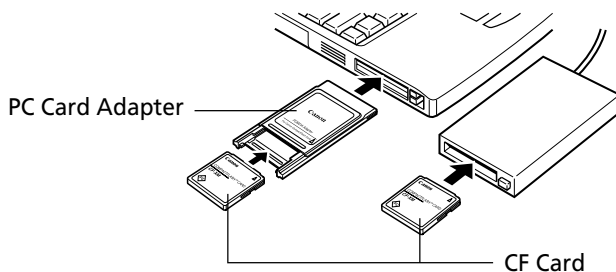
Computer USB Port



The USB port is marked with this symbol.

CF Card Reader or PC Card Slot (→ p. 17)

If you have a computer equipped with a PC card slot, a CF card reader or a PC card reader, you can place the camera's CF card into these devices to establish a direct connection. You will require a PC card adapter for PC card slots.



Connecting to a USB Port

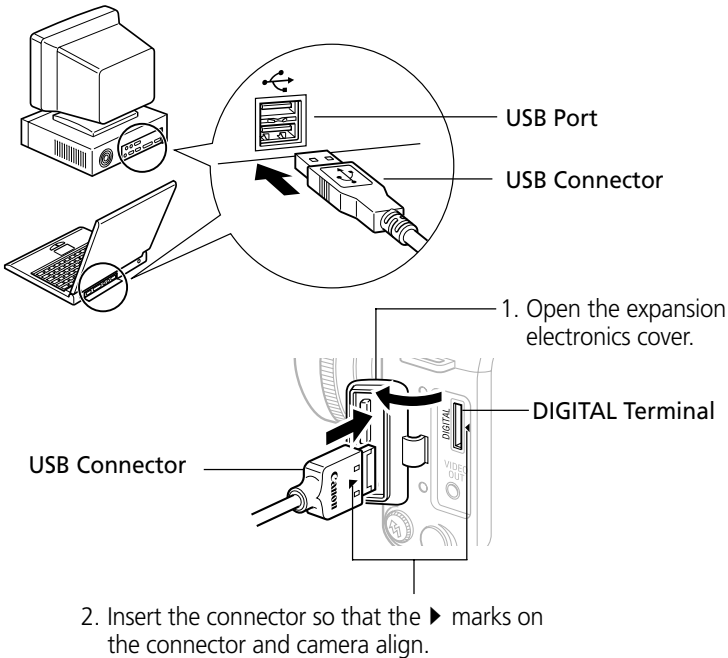
Requirements for the USB Interface

- The USB interface can only be used to connect the camera to computers with Windows 98 or Windows 2000 preinstalled. The USB ports on computers running versions of Windows 98 or Windows 2000 upgraded from Windows 3.1 or Windows 95, or versions of Windows 2000 upgraded from Windows 98 may not operate correctly.
- Connect the USB cable directly to one of the computer's main USB ports. The interface may not function correctly if the camera is connected via a USB hub.
- The interface may not function correctly while other USB devices, excluding USB mice and keyboards, are connected. If this problem arises, detach the camera and the other devices, and reconnect the camera only.
- Do not attach more than one camera to the USB ports of the same computer at the same time. The cameras may not operate correctly.

Important

- Please do not place your computer into standby mode while the camera is connected to its USB port. If you place the computer into standby mode while the camera is connected to a USB port, do NOT disconnect the USB cable from the camera or computer. Try to revive the computer. If the USB cable is detached in standby mode, some computers may not return to active mode correctly. For instructions regarding the standby mode, please consult the manual accompanying your computer and operating software.

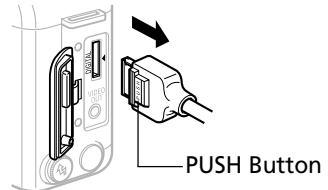
1. Attach the supplied USB cable to a USB port directly on the computer and to the DIGITAL terminal on the camera as shown below.
 - There is no need to turn the camera or computer power off when attaching or detaching the USB cables.
 - Please consult your computer's manual for the location of the USB ports.



2. Install the USB driver the first time you connect via a USB port.
(→ p. 11, 14)

Precaution for Unplugging Cables from the DIGITAL Terminal

- Always **press the PUSH button** on the connector to detach the cable from the camera's DIGITAL terminal.



Installing the USB Driver (Preinstalled Windows 98/2000 Systems Only)

Notes Regarding Installation

- The USB driver only needs to be installed the first time the camera is connected via the USB interface. Installation is not required from the second time onward.
- Do not cancel the installation partway through. Allow the procedure to finish completely before exiting. The camera may not operate correctly if the installation is incomplete.
- Read the “Troubleshooting the USB Driver Installation” section on page 49 if the installation cancels itself during the procedure, if the installation does not proceed as described in these procedures, or if you think that the drivers are not properly installed.
- Read the “Uninstalling the USB Driver” section on page 49 or 52 for instructions for that procedure.

Installing the USB Driver into Windows 98

Windows 98 CD-ROM

- Your computer may prompt you to insert the CD-ROM containing your Windows system software during the installation. Have the Windows disk handy in case it is required.

1. Once you have attached the USB cable to the camera and computer, set the camera’s main switch to [On]. (→ p. 10)
The “Add New Hardware Wizard” dialog will appear after a moment.
2. Read the dialog and click the [Next] button.



Your camera model name will appear here.

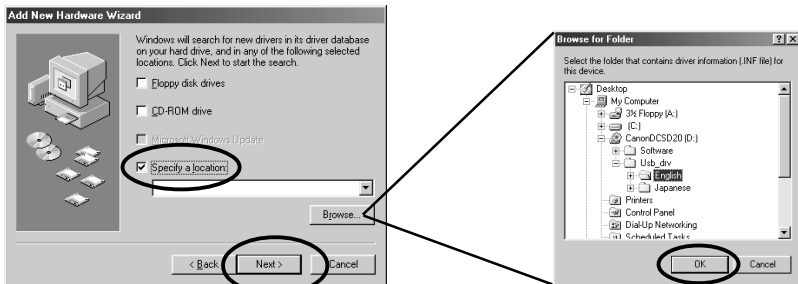
The dialog will change to the search selection dialog.

- 3. Select [Search for the best driver for your device (recommended)] and click the [Next] button.



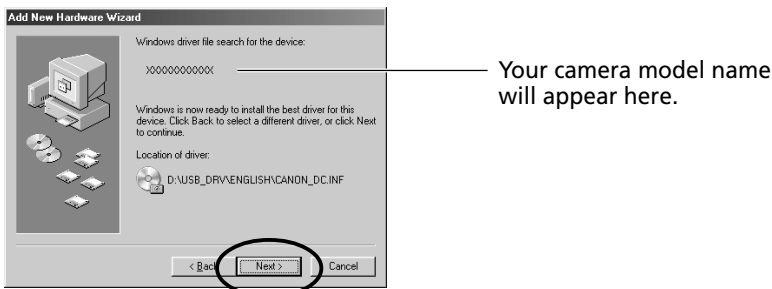
The dialog will change to the one that allows you to specify the search location.

- 4. Place the Canon Digital Camera Solution Disk in the CD-ROM drive.
- 5. Place a check in the [Specify a location] option, click the [Browse] button, and select the [USB_drv\English] folder. Click the [Next] button.

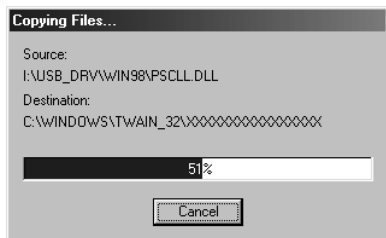


The dialog will change to the one that states it is searching for the driver files.

- 6. Read the dialog and click the [Next] button.



The computer will start to copy the driver files from the CD-ROM.

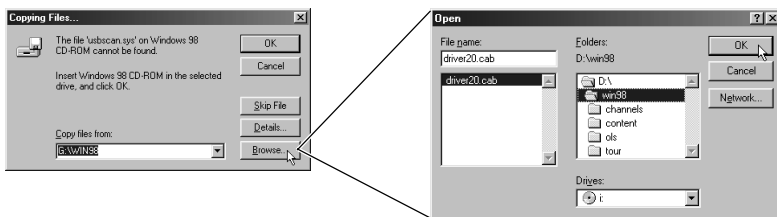


Do NOT cancel the copy operation while it is in progress.

When all the required files have been copied, the dialog will state that the installation is complete.

What to Do if You Are Prompted for the Windows System Disk during the Driver File Copying Process

- If prompted for the Windows system disk, replace the Canon Digital Camera Solution Disk with it and follow the on-screen instructions. If a dialog states that the "usbscan.sys" cannot be found, click the [Browse] button and specify the location as the [WIN98] folder on the Windows system disk.



7. Read the dialog and click the [Finish] button.



Your camera model name will appear here.

An event dialog for your camera model will display to allow you to select application programs. (→ p. 18, Step 3, or p. 42, Step 3.)

- If a dialog prompts you to restart your computer, remove the CD-ROM from the drive and restart the computer as instructed.

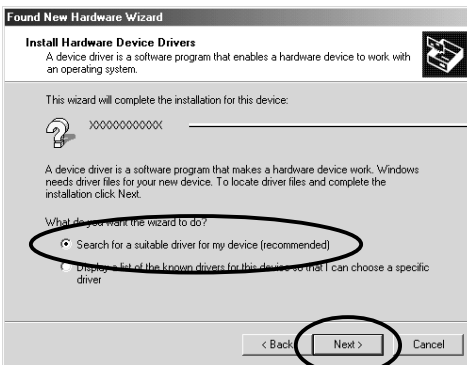
Installing the USB Driver into Windows 2000

Begin by logging onto the computer as an Administrator and then install the USB driver.

1. Once you have attached the USB cable to the camera and computer, set the camera's main switch to [On]. (→ p. 10)
The "Found New Hardware Wizard" dialog will appear after a moment.
2. Read the dialog and click the [Next] button.



3. Select [Search for a suitable driver for my device (recommended)] and click the [Next] button.

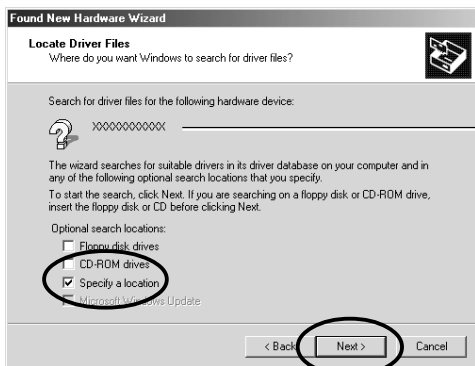


Your camera model name will appear here.

The dialog will change to the one that allows you to specify the search location.

4. Place the Canon Digital Camera Solution Disk in the CD-ROM drive.

5. Place a check in the [Specify a location] option, click the [Next] button.



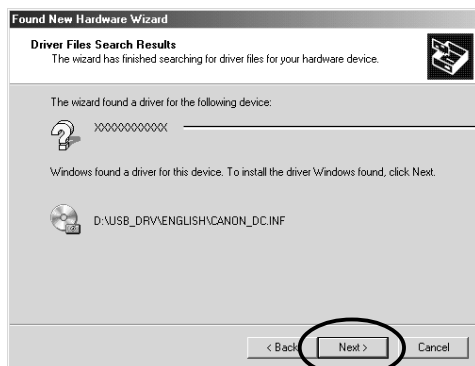
Your camera model name will appear here.

The dialog will change to the one that states it is searching for the driver files.

6. Click the [Browse] button, select the [USB_drvEnglish] folder from the Solution Disk and click [OK].



7. Read the dialog and click the [Next] button.



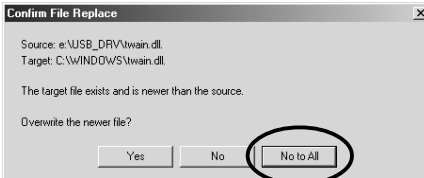
Your camera model name will appear here.

8. Click the [Yes] button if the “Digital Signature Not Found” message displays.



Your camera model name will appear here.

9. Click [No to All] if the “Confirm File Replace” dialog displays.



10. Read the message and click the [Finish] button.



Your camera model name will appear here.

An event dialog for your camera model will display to allow you to select application programs. (→ p. 18, Step 3 or p. 42, Step 3.)

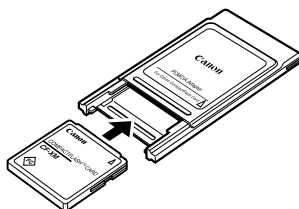
- If a dialog prompts you to restart your computer, remove the CD-ROM from the drive and restart the computer as instructed.

Connecting via a CF Card Reader or PC Card Slot

To load images directly from a CF card to a computer, eject the card from the camera, place it in a separately sold PCMCIA card adapter (PC card adapter) and insert the assembly into the PC card slot.

The adapter is not required if your computer is equipped with a CF card reader. Place the CF card directly into the reader.

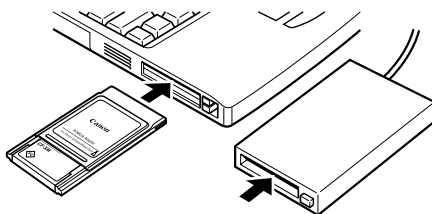
1. Place the CF card in the PC card adapter.



Place the CF Card in the Adapter.

2. Insert the loaded PC card adapter into the computer's slot or PC card reader.

The requirements for the power being on or off when the PC card adapter is inserted differ according to the product. Please consult the manuals accompanying your equipment.



Insert the Adapter in the Slot.

Using ZoomBrowser EX the First Time (From Loading to Printing)

This section provides a simple explanation of the procedures for using ZoomBrowser EX to perform each of the steps from loading to printing. Please refer to the ZoomBrowser EX Help file for more details.

What to Do if the “Caution! Connection Time” Dialog Displays

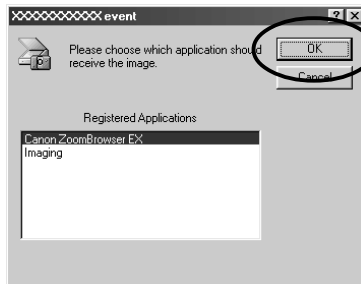
- If a set period of time passes without a camera function being accessed when the camera is connected via the USB interface, a message on the computer display will ask if you wish to remain connected. If you do not access a function, the camera will close the connection after an additional minute passes. The time required for the message to display will vary with the camera's auto power off setting. Please see the Camera User's Guide for details. (The message will not display and the camera will not disconnect if an AC adapter is used or auto power off is turned off.)
- To reconnect the camera, press the camera's shutter button.

Starting ZoomBrowser EX

USB Interface

1. Attach the camera to the computer with the USB cable. (→ p. 10)
2. Set the camera's main switch to [On].
After a moment, an event dialog will allow you to select an application program to start.

Your camera model name will appear here.



3. Select [Canon ZoomBrowser EX] and click the [OK] button.
ZoomBrowser EX will start and display the camera's images as small thumbnail images in the ZoomBrowser EX Camera Window. (→ p. 20)
Quick Tips will automatically display. Read these tips to quickly gain an understanding of the operating procedures.

How to Have ZoomBrowser EX Start Automatically

- If you want ZoomBrowser EX to start automatically without first displaying the event dialog, use the procedures below to change the settings.
 1. Open the [My Computer] window while the camera is connected to the computer via the USB interface.
 2. Open the [Control Panel] and select [Scanners and Cameras] and your camera model.
 3. Click the [Properties] button and display the [Events] tab.
 4. A list of applications registered for automatic starting will display. Remove the checks beside every program except for ZoomBrowser EX. Click the [OK] button.
- ZoomBrowser EX will now start automatically the next time you connect the camera. If the [Disable device events] option has a check mark, the automatic start will be turned off.

CF Card Reader or PC Card Slot Interface

1. Place the CF card into the CF card reader or into the PC card adapter and then into the PC card slot. (→ p. 17)
2. Start ZoomBrowser EX.
Double-click the [Canon ZoomBrowser EX] icon on the desktop to start the program.



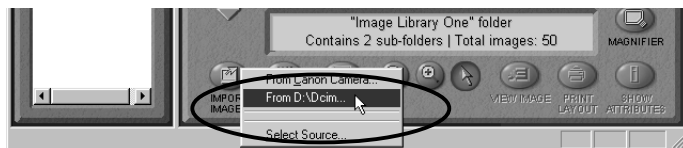
Canon ZoomBrowser EX Icon

If the [Canon ZoomBrowser EX] icon does not appear on the desktop, click the Windows [Start] button and select [Programs], [Canon Utilities], [ZoomBrowser EX] and [ZoomBrowser EX].

Quick Tips will automatically display. Read these tips to quickly understand operating procedures.

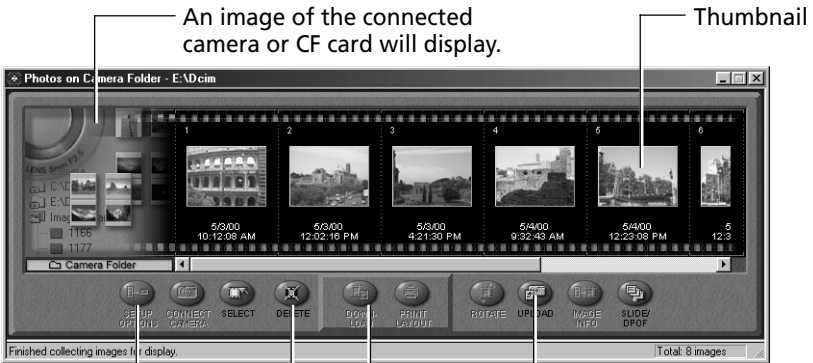
3. Click the [IMPORT IMAGES] button and select [From Dcim].

The images from the CF card will display in ZoomBrowser EX Camera Window as small thumbnail images. (→ p. 20)



The ZoomBrowser EX Camera Window

The Camera Window will open when a connection to a camera or CF card is initiated. Thumbnail (small) images will display.



SETUP OPTIONS Button
Sets various camera settings (see inset below) using the computer.

DELETE Button
Deletes the selected images.

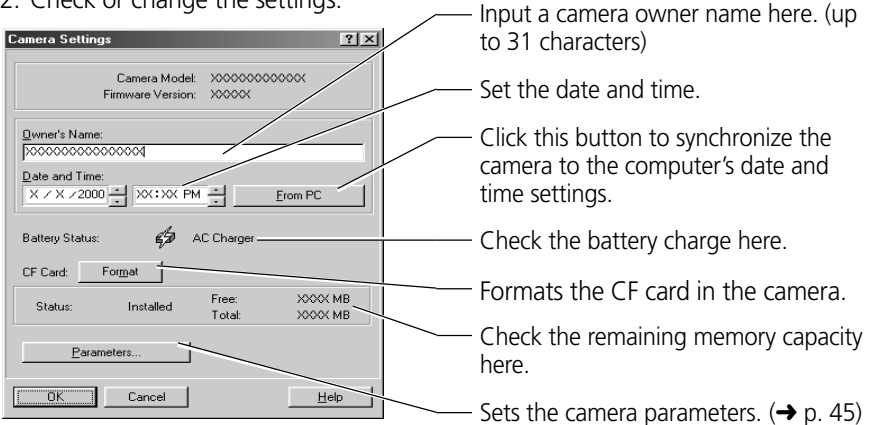
DOWNLOAD Button
Copies selected images to the computer from the camera or CF card. (→ p. 21)

UPLOAD Button
Copies images from the computer to the camera or CF card. (→ p. 30)

How to Check and Change Various Camera Settings

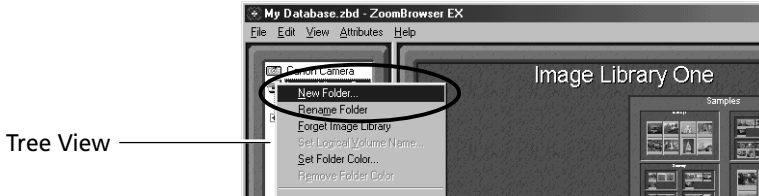
- You can adjust the date, time and owner settings in the Camera Settings dialog using the computer when the camera is connected. You can also check the battery charge and remaining memory capacity.

- Click the [SETUP OPTIONS] button.
- Check or change the settings.

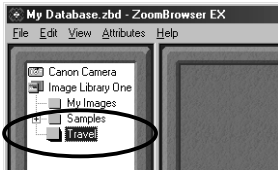


Loading and Saving Images from the Camera

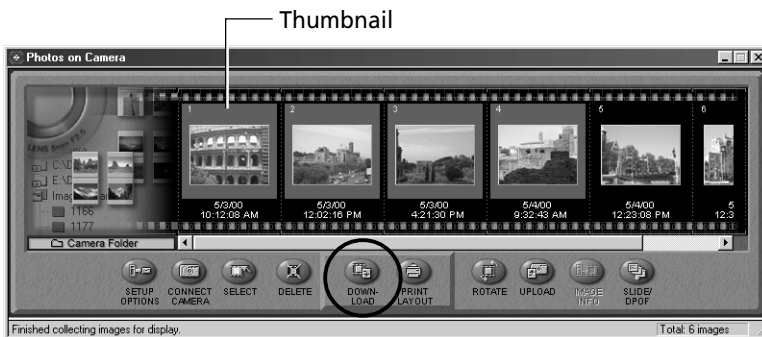
1. Create a new folder in which to save the images from the camera.
In the Tree View, right-click the [Image Library One] folder, select [New Folder] from the pop-up menu and input a folder name.



2. Select the new folder in the Tree View.

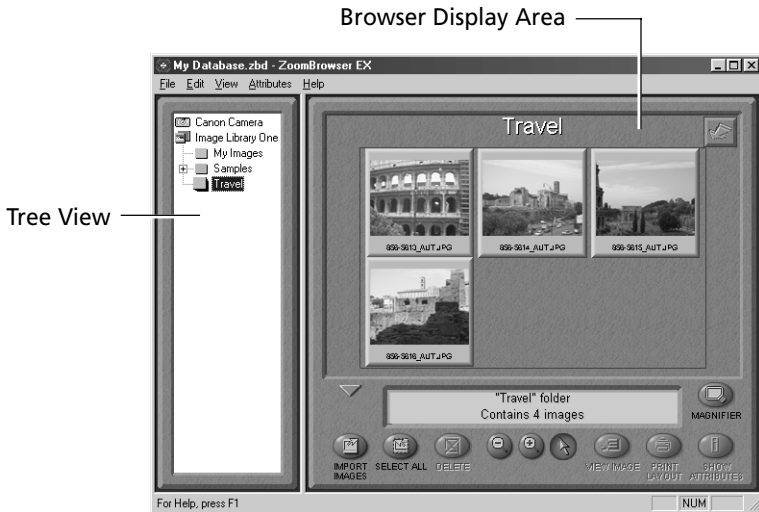



3. Select the images that you wish to download from the Camera Window and click the [DOWNLOAD] button.
Click the thumbnail you wish to select or press [Ctrl] and click to select multiple thumbnails.



The downloaded images will be saved to the computer disk and appear in the Browser Display Area.

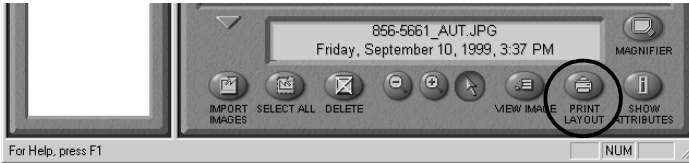
- You can also download images to the computer by dragging them from the Camera Window and dropping them on the Browser Display Area or Tree View.



To disconnect the camera, click the close box  at the upper right of the Camera Window. The Camera Window will close.

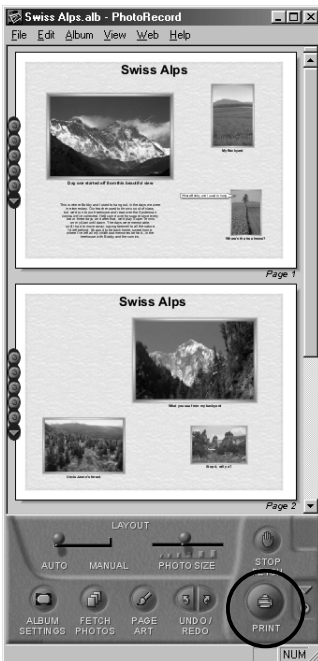
Printing Images

1. Select the image(s) you wish to print and click the [PRINT LAYOUT] button.



The PhotoRecord printing utility will start and automatically display the selected image(s) in a page layout.

2. Adjust the print settings if you wish to change the page layout. Please refer to page 33 or the PhotoRecord Help file for details of the settings.
3. Click the PhotoRecord [PRINT] button.



The Print dialog will display.

4. Click the [OK] button to start printing.

Using Additional ZoomBrowser EX Functions

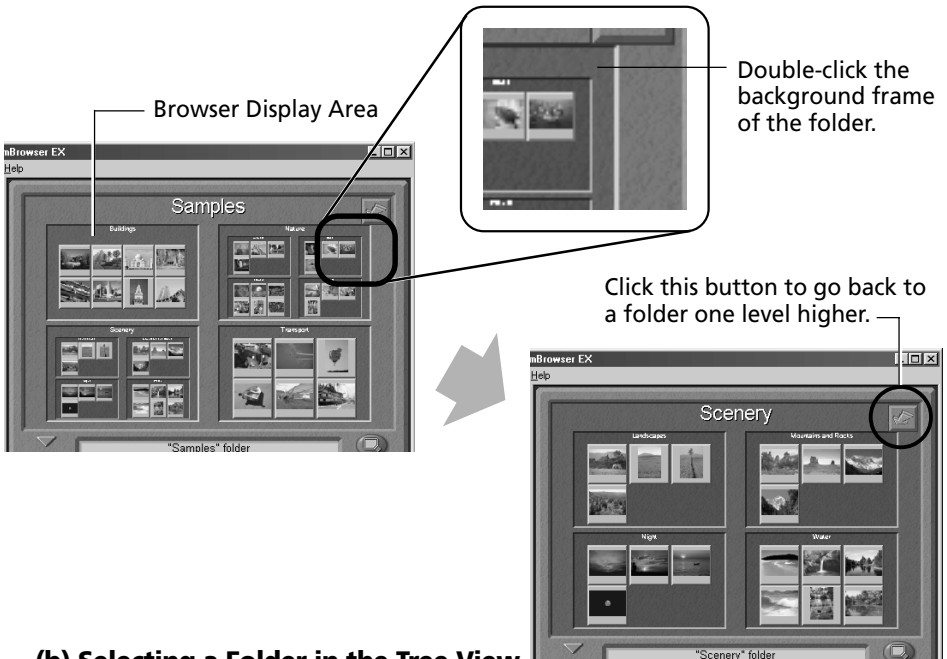
This section explains the additional features of ZoomBrowser EX. Please refer to the ZoomBrowser EX Help file for more details.

Displaying Images

Zooming Images In and Out

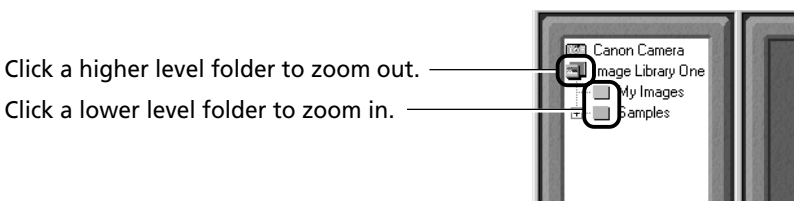
(a) Double-Clicking the Browser Display Area

Double-click the background frame of the folder in which an image is registered to zoom it to fill the Browser Display Area.



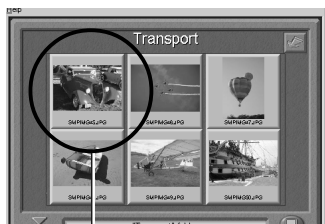
(b) Selecting a Folder in the Tree View

You can also zoom a folder in or out with its icon selected in the Tree View.



Zooming a Single Image

Double-click an image in the Browser Display Area to display it in the Image Viewer.



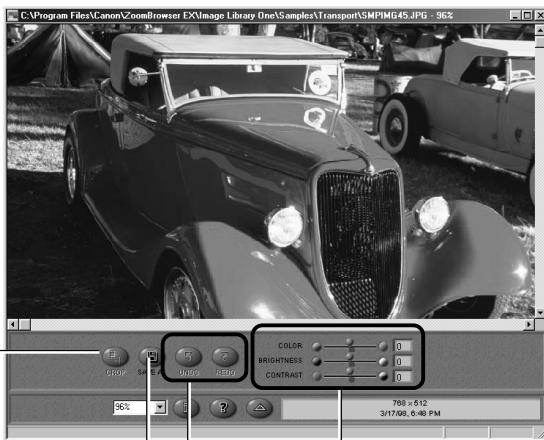
Double-click the target image.



Edit Panel Button

About the Image Viewer Edit Panel

- The edit panel displays when you click Edit Panel button in the Image Viewer.



CROP Button

Drag the cursor to select the crop area and click the [CROP] button to trim everything outside the crop area.

SAVE AS Button

Save the image with a different name and file format.

COLOR/BRIGHTNESS/CONTRAST Sliders

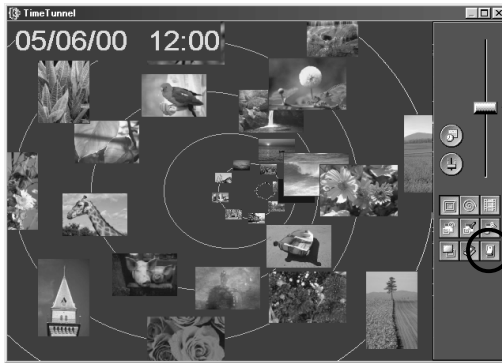
Slide the tab to adjust the color, brightness or contrast settings.

UNDO/REDO Buttons

Reverse an action or reimplement it.

Displaying Images in Chronological Order

Select a folder or some images, click the [View] menu and select [TimeTunnel]. The selected image(s) will display in a time tunnel. Please refer to the TimeTunnel Help file for more details on how to operate this function.




Drag the tab up or down to go backward or forward in time. The time tunnel will advance in the selected direction.

To quit TimeTunnel and return to the ZoomBrowser EX window, click this button.

Showing Images in a Slide Show

The slide show function displays images saved onto the computer disk one-by-one at full-screen size as if they were part of a slide show.

1. Click the [View] menu and select [Slide Show Options].
2. Select a play method.
The "Slide Show Options" dialog will display. Set a play interval and a transition effect and click the [OK] button.
3. Select images from the ZoomBrowser EX Browser Display Area for showing.
4. Click the [View] menu and select [Slide Show].
The selected images will play in order. The slide show will close after the last image is displayed. If the slide show is set to repeat, press the  on the control panel to close the slide show.

About the Print Mark Button

- If the [Print Mark] button is clicked while an image is played in a slide show, PhotoRecord will automatically start after slide show has finished and place the displayed image with a print mark in an auto layout.
- Please refer to page 33 or the PhotoRecord Help file for more details on how to operate this function.

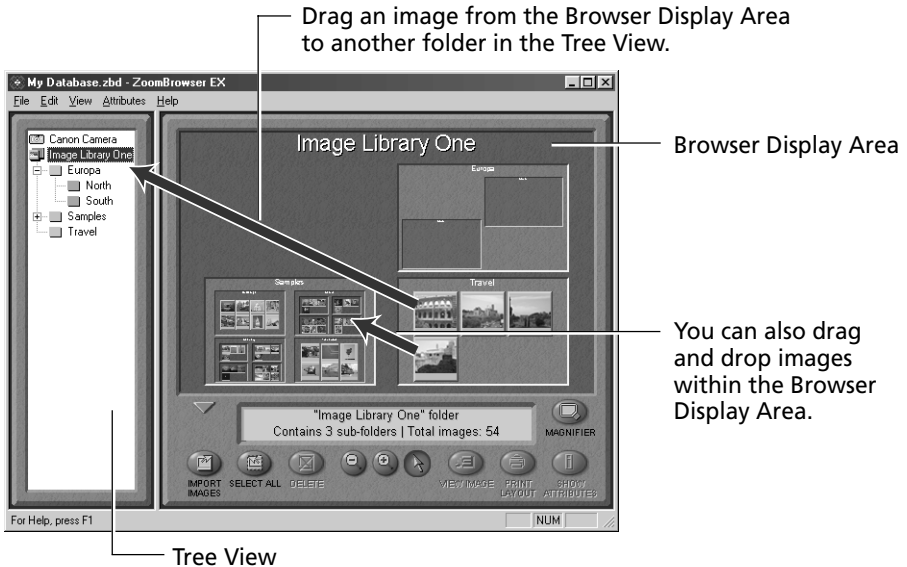


Print Mark Button

Organizing Images

Changing the File Location

You can move an image file by dragging and dropping it onto another folder icon.



The [Image Library One] folder is located within the folder in which ZoomBrowser EX was installed. The Tree View displays files at levels below this folder.

Adding a New Library Folder

Adding a folder to the Tree View allows you to display the images in that folder and its subfolders in ZoomBrowser EX. Click the [File] menu, select [Add Image Library] and select the folder. The selected folder will appear in the ZoomBrowser EX Tree View as a new library.

Refreshing the Contents of a Library

If you have used another program, such as the Windows Explorer utility or Adobe Photoshop LE, to move or edit images registered with ZoomBrowser EX, you should select the library, click the [View] menu and select [Refresh Current Library]. This will update the library.

Erasing Images

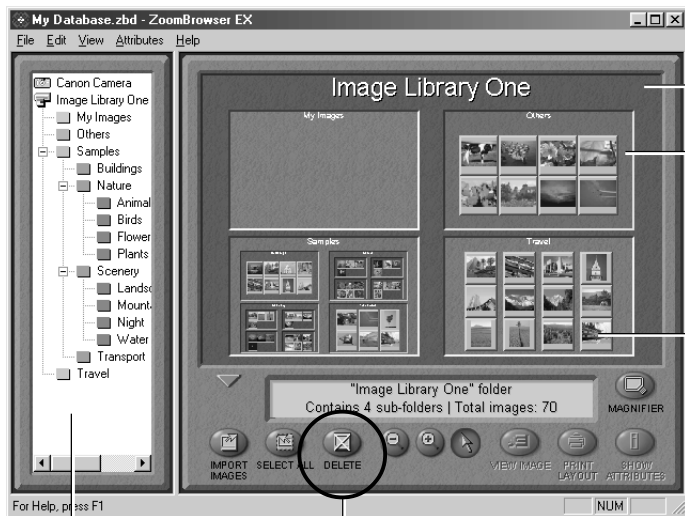
An image cannot be recovered after it is erased. Double-check to make sure you have the right images before erasing.

Erasing Images Singly

1. Select the target image in the Browser Display Area and click the [DELETE] button.
A confirmation dialog will display.
2. Check the image to make sure it can be deleted and click [Delete].
The image will be erased.

Erasing Images by Folder

1. Click the background frame of the target folder and the [DELETE] button.
A confirmation dialog will display.
2. Check the images to make sure they can be deleted and click [Delete].
The images and the folder will be erased.



Browser Display Area

Click on the folder's background frame to erase the folder and all its images.

Click images singly to erase them.

Tree View

DELETE Button

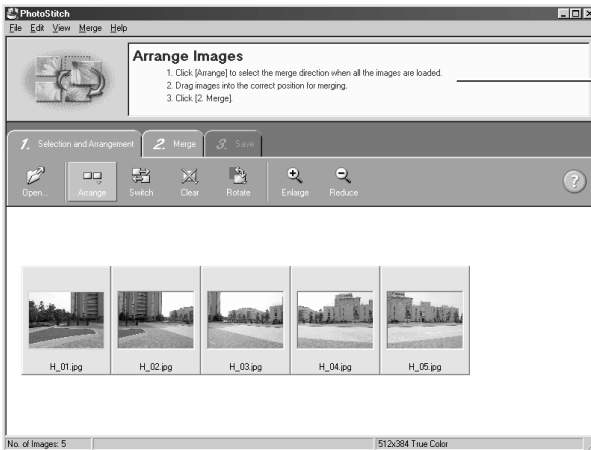
Saving Computer Images to a CF Card in the Camera

1. Open the Camera Window. (→ pp. 18-20)
2. Click the [UPLOAD] button in the Camera Window.
The "Upload Images from Disk" dialog will display.
3. Select the images from the computer and click the [Open] button.
The "Save to Camera" dialog will display.
4. Select the image size and resizing options and click the [Save to Camera] button.
The selected image will be saved onto the camera's CF card.

Merging Panoramic Images with PhotoStitch

To Merge Images Registered in ZoomBrowser EX

- You can merge a series of overlapping images into a single, seamless panorama.
- Select the images in the browser area, click the [Edit] menu and select [PhotoStitch].
The PhotoStitch program will start.
- Follow the instructions in the guidance window to merge the images.
- Please refer to the PhotoStitch Help file for more details.



Follow the instructions to merge the images.

Sending Images via E-mail

You can send images as attachments to e-mail messages. You can adjust the image size and quality to reduce the file size for transmission.

1. Select the target image(s) in the Browser Display Area.
2. Click the [File] menu and select [Send Image(s) by E-Mail].
3. Adjust the image size and quality.

The e-mail image creation window will display.

Set the image size and quality and follow the on-screen messages to complete the procedures.

4. Click the [Finish] button.

When you click the [Finish] button, your e-mail program will start and open a new message with the image file attached. Input your message, a subject, the recipient's address and send the message.

Some e-mail programs or operating systems may not support the auto start function. In that case, temporarily save the adjusted image file to the desktop or another easy-to-find folder. Then start your e-mail program, open a new message and attach the adjusted image file to it.

Editing and Applying Special Effects to Images

1. Confirm that Adobe Photoshop LE has been installed.
2. Select an image from the Browser Display Area of ZoomBrowser EX.
3. Click the [Edit] menu and select [Edit Image using Adobe Photoshop].

Please refer to the Adobe Photoshop LE Help file and electronic guide (User Guide.pdf) for instructions for this program.

4. Edit and apply special effects to the image.
 - ZoomBrowser EX supports the BMP, FlashPix, JPEG and TIFF file formats.
 - If you selected a folder registered in ZoomBrowser EX as the save location, please return to the ZoomBrowser EX window, click the [View] menu and select [Refresh Current Library] to update the thumbnail in ZoomBrowser EX.


Editing the Print Order Settings (DPOF)

You can specify which images on a CF card you wish to print as well as the number of copies. You can also select the print type and whether or not the shooting date and file number information is printed with the image. A convenient feature of these settings is that they comply with the DPOF (Digital Print Order Format) standards, which allow you to print on any DPOF-compliant digital printer or order prints from a participating photo developing laboratory.

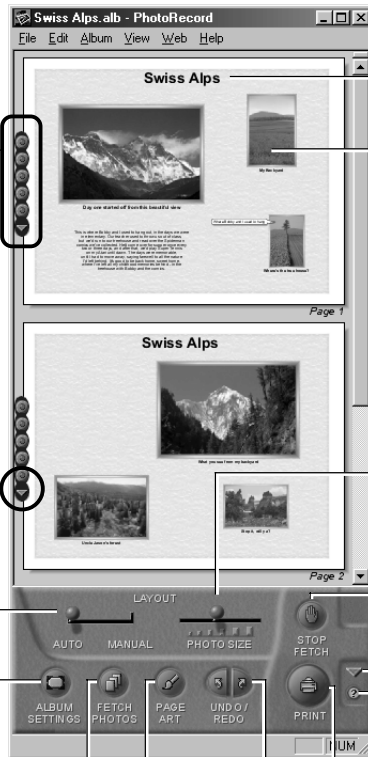
1. **Open the Camera Window.** (→ pp. 18-20)
2. **Click the [Slide/DPOF] button.**
The Edit Slide/DPOF window will display.
3. **Click [Print Order (DPOF)] at the window's upper left.**
4. **Select the print type from among the [Standard Print], [Index Print] or [Both] options.**
 - Standard .. Set the number of copies of the images you wish to print in the column below the thumbnails.
 - Index A check mark will appear below the thumbnails selected for printing.
5. **Click the [Save to Camera] button.**
The print order settings will be saved to the CF card in the camera.
6. **Click the [Exit] button.**

- A warning message will display if ZoomBrowser EX encounters print settings data it does not support on a CF card with print settings created by a non-Canon brand DPOF-compliant digital camera. If any print settings on such a card are changed, all of them will be overwritten by ZoomBrowser EX and lost.
- Some printers or photo developing laboratories may not be able to reflect all of the print settings in the output.

Printing Images

- Select a folder or image(s) for printing from the Browser Display Area or Camera Window and click the [PRINT LAYOUT] button to start the PhotoRecord program.
- You can also click the  button while an image is displayed in a slide show to add a print mark to it. When the slide show closes, PhotoRecord will start automatically.
- The selected images will automatically display in a page layout.
- Please refer to the PhotoRecord Help file for more details.

PhotoRecord Window



Click these buttons to select a layout pattern for each page.

Click the arrow ▼ to display a pop-up menu.

Click this to switch between auto and manual layout mode.

Click this to set the album type, paper size and orientation.

Click this to import images.

Click this to change the background design.

Input titles or captions anywhere you wish.

Drag the images to change the layout.

Slide this tab to the left to shrink the image, right to expand it.

Click this to stop importing images.

Switch between control panel sizes with this.

Click this to display Help.

Click this to display the Print dialog.

Click these buttons to undo or restore the previous action.

Creating a New Album

The PhotoRecord layouts with titles and captions can be saved as albums. Moreover, PhotoRecord includes a variety of templates, making it easy to create beautiful albums.

1. To save an album, click the PhotoRecord [File] menu and select [Save As].
2. Input a name and click [Save].

Add a title to the page

Click the arrow ▼ and select [Edit Title] from the pop-up menu.

Add a caption to an image

Right-click an image and select [Edit Caption] from the pop-up menu.

Change the photo frame

Right-click the image and select [Change Photo Frame] from the pop-up menu.

Change the page background

Right-click the page and select [Change Page Artwork] from the pop-up menu.

Insert text

Click the arrow ▼ and select [Add Text] from the pop-up menu.

Change the text box format

Right-click a text box and select [Change Frame] from the pop-up menu.

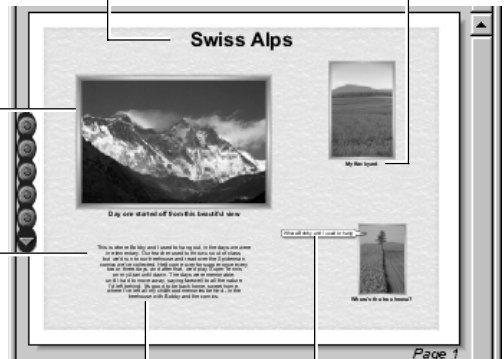


Image Resizing and Rotating Modes

Image Resizing Mode

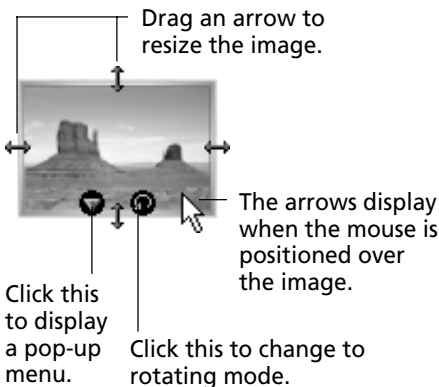
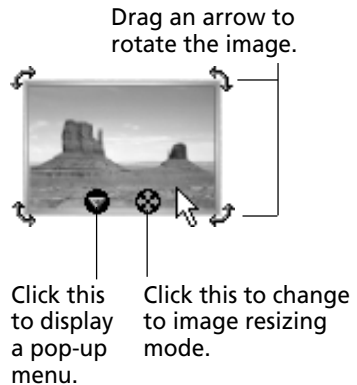


Image Rotating Mode



Setting the Image Size for Printing

Fixed Photo Sizes

Images can be printed at standard photo print sizes.

Since the images are printed without gaps between them, they look like photo prints when they are cut with a cutter.

1. Click the [Album Settings] button in the PhotoRecord window.
The Album Settings dialog will display.
2. In the [Album Type] category, select [Fixed photo size printing].
3. Set the photo size and click [OK].

Printing on Canon Perforated Paper

The [Canon Perforated paper printing] option will be selectable in the Album Settings dialog if you are using a Canon BJ printer that supports Canon Perforated Paper media. Canon Perforated Paper has perforations at the preset dimensions allowing you to print at the specified size and simply tear along the perforated lines to produce an image with the appearance of a finished photo print. Please consult the BJ Solutions Disk operating guide for your printer for more details.

Precaution when Printing from PhotoRecord from Windows NT 4.0/Windows 2000

- If the printer name is too long, you may not be able to print from PhotoRecord. Shorten the name to enable printing.
 1. Click the Windows [Start] menu and select [Settings] and [Printers].
 2. Click the printer name twice with a slight pause between clicks. Input a new name that is 31 characters or less. If the printer is a network printer, include the path name in the 31-character count.

Shooting with the RemoteCapture Function

The RemoteCapture program will start if you click the ZoomBrowser EX [Edit] menu and select [RemoteCapture]. RemoteCapture lets you activate the camera's shutter button remotely from the computer. The captured image is automatically saved into the ZoomBrowser EX folder that is currently selected.

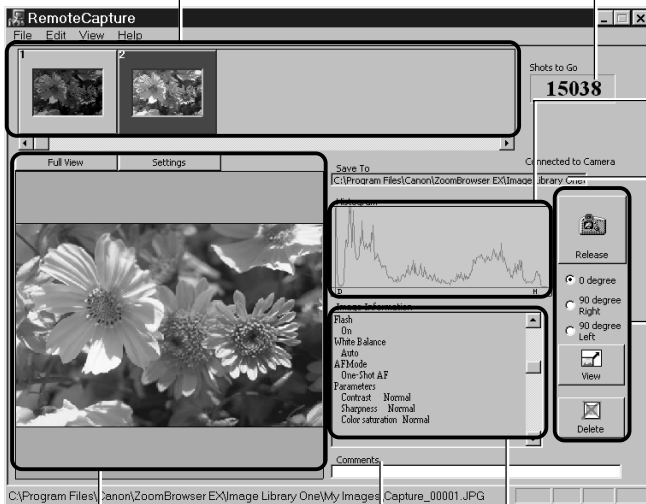
RemoteCapture Window

Thumbnail View

Displays thumbnails of all the images shot in the current session since RemoteCapture was started.

Number of Frames that Can Be Captured

Displays the number of images that can be saved to the computer or the camera's CF card.



Displays the distribution of brightness data.

Displays the location in which files are saved. (→ p. 38)

Control Buttons
These buttons control the basic RemoteCapture functions. (→ p. 37)

Image View

Displays the image selected in the Thumbnail View.

Displays the image information.

Allows you to add comments to images.

How to Start RemoteCapture Instead of Displaying the Camera Window

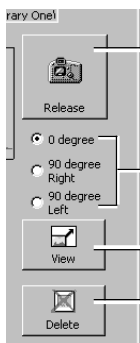
The settings can be changed so that ZoomBrowser EX automatically starts RemoteCapture instead of its Camera Window when the camera is connected to the computer's USB port.

- (1) Click the ZoomBrowser EX [File] menu and select [Preferences].
- (2) In the Preferences dialog, click the [AutoStart] tab and set [Automatic Start Options] to [RemoteCapture].

The RemoteCapture window will now show instead of the ZoomBrowser EX Camera Window when the camera is connected to the USB port and starts ZoomBrowser EX.

About the RemoteCapture Control Buttons

The control buttons are used to shoot, delete and display images.



Click here to trigger the camera and take a shot. The image is automatically saved to the computer. Pushing the camera's shutter button directly will also save the image to the computer.

Rotates the image saved to the computer by 90 degrees either way. Select one of these to automatically rotate and save images shot with the camera swiveled from a horizontal to a vertical orientation.

Displays the image selected in the Thumbnail View in the Viewer.

Deletes the image selected in the Thumbnail View. Please take proper caution before deleting because deleted images are completely erased from the computer in one step with this button.

Using Interval and Timer Shooting

RemoteCapture can be used to shoot a set number of images at specified intervals (Interval Shooting) or to shoot an image after a specified delay (Timer Shooting).

Interval Shooting

You can set the number of frames and the interval at which they are shot.

1. Click the [File] menu and select [Interval Shooting].
The Interval Shooting dialog will display.
2. Set the number of frames and interval value and click [OK].
RemoteCapture will start interval shooting, capturing the specified number of images at the specified intervals.

Timer Shooting

You can set the time delay before an image is shot.

1. Click the [File] menu and select [Timer Shooting].
The Timer Shooting dialog will display.
2. Set the number of seconds and click [OK].
RemoteCapture will start timer shooting, capturing an image after the specified delay.

Printing a Thumbnail Index Sheet

Thumbnails you select in the Thumbnail View can be printed in order on a single index sheet by clicking the [File] menu and selecting [Print Index]. Since the file name and shooting date and time can be printed with each image, index sheets serve as a convenient record of and reference for your images.

Precautions when Shooting with RemoteCapture

- The camera's shooting settings cannot be set from RemoteCapture. They must be set on the camera.
- If your computer is set to go into standby mode, there is no guarantee that RemoteCapture will continue to function after the computer has entered standby mode. Always turn off the standby function before you start shooting with RemoteCapture.
- If the camera is set for "mirror lockup" shooting, the shutter will activate approximately two seconds after the release button is clicked in RemoteCapture.
- The camera's auto power save setting is disabled while connected to RemoteCapture, and the power remains on until manually turned off. You are recommended to power the camera with a household power source while it is connected.
- Please note that the camera will not be able to shoot at the specified interval if it is shorter than the time required to send the image and save it on the computer.

Changing the Save Location and Other Preferences

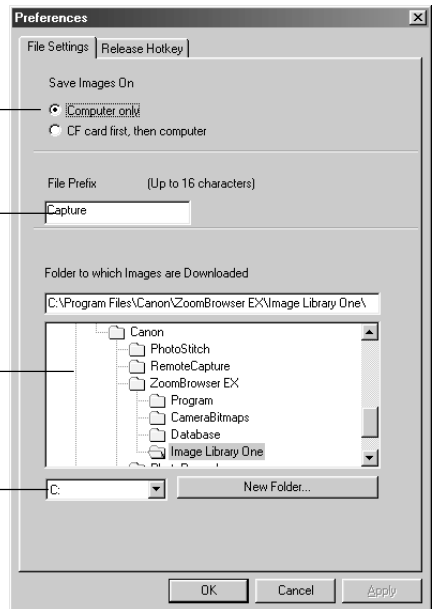
The Preferences dialog can be opened by clicking the RemoteCapture [File] menu and selecting [Preferences]. This dialog can be used to change the save location and settings.

Selects whether the image is saved only on the computer or on the camera's CF card too.

Sets the image file prefix. If the prefix is set to [Capture], for example, the first image will be named [Capture_00001.jpg] and successive images will have higher numbers.

Sets the folder in which the image file is saved.

Selects a drive on the computer.



Converting RAW Images

Images shot in the RAW format (hereafter RAW images) are recorded without the image quality being reduced by signal processing or lossy compression. Please refer to your Camera User's Guide to learn how to set the camera to shoot in the RAW format.

High-quality RGB images can be obtained from RAW image file data. When a RAW image is converted, you can also choose to adjust its quality settings to obtain an image of a higher caliber than if it had first been loaded into image editing software.

Please note that ZoomBrowser EX or the TWAIN Driver are required to load RAW images onto a computer.

Please see page 48 for further information about the RAW image format.

Converting RAW Images without Adjusting the Quality

1. Select a RAW image from the Browser Display Area of ZoomBrowser EX.
2. Click the [File] menu and select [Convert RAW Images].
The image is converted and saved in a new TIFF (8 bits/channel) file. To learn how to change the file format, please see "How to Change the File Format" on the next page.

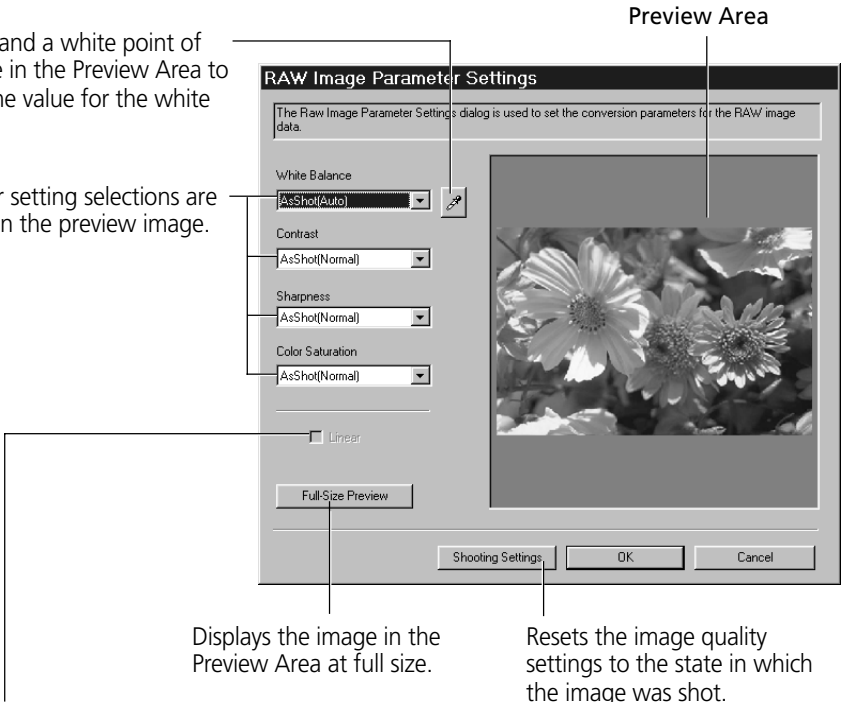
Converting RAW Images with Quality Adjustment

1. Select a RAW image from the Browser Display Area of ZoomBrowser EX.
2. Click the [File] menu and select and [Convert RAW Images with User Defined Parameters].
The RAW Image Parameter Settings dialog will display.
3. Select the quality settings and click [OK].
The RAW image is converted according to the specified parameters and saved in a new TIFF (8 bits/channel) file. If multiple RAW images are selected, the parameters are applied only to the first image. When only one RAW image is adjusted, the changes are also reflected in the remaining images in the selection. To learn how to change the file format, please see "How to Change the File Format" on the next page.

RAW Image Parameter Settings Dialog

Click this and a white point of the image in the Preview Area to set it as the value for the white balance.

Parameter setting selections are reflected in the preview image.



Displays the image in the Preview Area at full size.

Resets the image quality settings to the state in which the image was shot.

Placing a check here applies linear processing to the contrast, sharpness and color saturation.

- The [Linear] option is only enabled when [TIFF 16 bits/channel] is selected as the file format.

How to Change the File Format

1. Click the ZoomBrowser EX [File] menu and select [Preferences].
The Preferences dialog will display.
2. Change the format in the Image Format tab and click [OK].

About Saving in the TIFF 16 Bits/Channel Format

When [TIFF 16 bits/channel] is selected as the file format for saving RAW images, 16 bits of data is used to record each RGB channel. This image format can be used in several application programs, such as Adobe Photoshop LE. Formats other than TIFF (16 bits/channel) all save the image using 8 bits per RGB channel.

Backing Up Data

You are recommended to use the following procedures to back up your image data after you add, delete or change images from ZoomBrowser EX.

1. Click the ZoomBrowser EX [File] menu and select [Backup Database].
When the backup is complete, the name of the backup file will display in a dialog. This file name is needed when the database requires restoring.

The database file may become corrupted if a system crash occurs for some reason when ZoomBrowser EX is being run at the same time as another software program. You should restore the data in this case. To avoid unintentional loss, you should back up your image data frequently.

How to Restore the Database File from a Backup File

1. Click the ZoomBrowser EX [File] menu and select [Restore Database].
2. In the “Restore Database From” dialog, select the file to which the database was previously backed up and click [Open].
Confirm that the backup file has the [.zbd] file extension.
3. In the “Restore Database To” dialog, input the name of the database to which the backup will be restored and click [Save].
In most cases you are advised to select the corrupted database and overwrite it.
4. A confirmation dialog usually displays when the backup file is correctly restored.
This will restore the database file to the state from which it was backed up.

Loading Images with TWAIN-Compliant Application Programs (Adobe Photoshop, etc.)

This section explains how to load images with TWAIN-compliant application programs using Adobe Photoshop LE as an example. Please refer to the manual for each application program for more details.

Installing the Software

Installing the TWAIN Driver

This program is required to load camera images into the TWAIN-compliant application programs. For instructions, see “Installing/Uninstalling the Software” (→ p. 6) or “Installing the USB Driver” (→ p. 11, 14).

Installing Adobe Photoshop LE

Place the Adobe Photoshop LE CD-ROM in the drive, double-click [My Computer] on the Windows desktop, followed by the [Photosle] CD-ROM icon, the [English] and [Photosle] folders, and the [Setup.exe] file. Follow the on-screen instructions to complete the installation.

You must input the software serial number to install Adobe Photoshop LE. It can be found on the CD-ROM case.

Starting the Software

Connecting the Camera to a USB Port

1. Connect the camera to the computer's USB port. (→ p. 10)
2. Set the camera's main switch to [On].
After a moment, an event dialog will allow you to select an application program to start.
3. Select Adobe Photoshop LE and click [OK].
Adobe Photoshop LE will start.
4. Click the Adobe Photoshop LE [File] menu and select [Import] and [Select TWAIN_32 Source].
5. Choose your camera model and click [Select].
6. Click the [File] menu and select [Import] and select [TWAIN_32].
The TWAIN Driver will start. (→ p. 44)

Connecting via a CF Card Reader or PC Card Slot

1. Place the CF card into the CF card reader or into the PC card adapter and then into the PC card slot. (→ p. 17)
2. Click the Windows [Start] menu and select [Programs], [Adobe], [Photoshop Limited Edition] and [Adobe Photoshop Limited Edition]. Adobe Photoshop LE will start.
3. Click the [File] menu and select [Import] and [Select TWAIN_32 Source].
4. Choose an appropriate source and click [Select].
Select either [Canon XXX USB], where the XXX represents your camera model name, or [Canon Digital Camera RS-232C] as the source as appropriate. If several models are listed, select the one that corresponds to your camera.
5. Click the [File] menu and select [Import] and [TWAIN_32].
The TWAIN Driver will start.

Loading Images

Downloading Images from the Camera

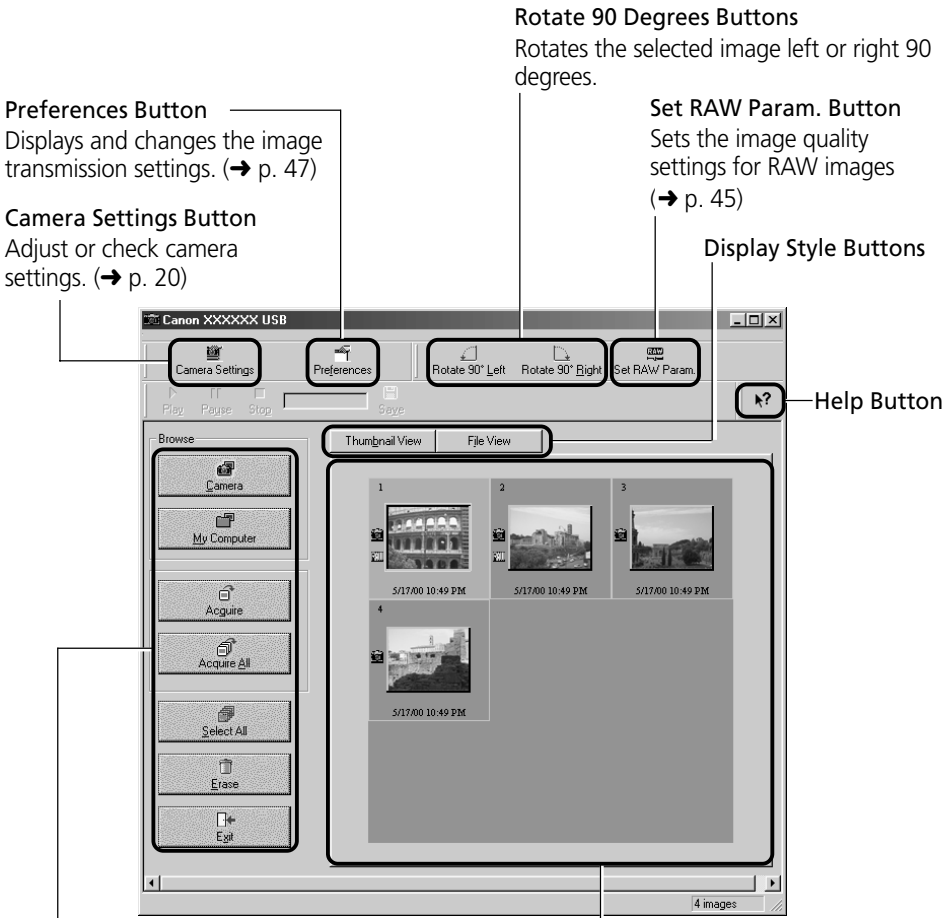
1. Click the [Camera] button.
The camera images will appear in the Thumbnail Display Area.
2. Select the images you wish to download and click the [Acquire] button.
The images will appear in the Adobe Photoshop LE window.
3. Click the [Exit] button to close the TWAIN Driver.
To save the loaded images, click the Adobe Photoshop LE [File] menu and select [Save As]. Input a file name and change the file location and format settings if necessary.

Downloading Images Directly from a CF Card

1. Double-click the TWAIN Driver's [My Computer] button.
The My Computer dialog will open.
2. Select the folder containing the images and click [OK].
The CF card images will display in the Thumbnail Display Area.

3. Select the images you wish to download and click the [Acquire] button. The images will appear in the Adobe Photoshop LE window.
4. Click the [Exit] button to close the TWAIN Driver. To save the loaded images, click the Adobe Photoshop LE [File] menu and select [Save As]. Input a file name and change the file location and format settings if necessary.

Guide to the TWAIN Driver Window



Setting the Parameters

Up to three sets of parameters for loading images can be set in the TWAIN Driver using the Parameter Settings dialog in addition to the parameters already set on the camera.

Please see the Camera User's Guide to learn how to select the parameters for the camera that are set with the computer.

1. Click the [Camera Settings] button in the TWAIN Driver window.
The Camera Settings dialog will display.
2. Click the [Parameters] button.
The Parameter Settings dialog will display.
3. Click [Add Set].
4. Set each parameter.
5. Click [Apply to Camera].
The settings will be applied to the camera.

Parameter Settings Dialog

The screenshot shows the 'Parameter Settings' dialog box. It has a title bar with a close button. The main area contains a text box with instructions: 'This dialog can be used to set the parameter settings for the camera's creative zone. Parameter sets labeled Set1-Set3 can be applied to camera.' Below this are two tabs, 'Set1' and 'Set2'. Under 'Set1', there are three sliders for 'Contrast', 'Sharpness', and 'Color Saturation', each with a 'Normal' button to its right. At the bottom, there are buttons for 'Load Settings', 'Save Settings', 'Apply to Camera', 'Add Set', 'Delete Set', and 'Close'. Callouts point to these buttons with the following text:

- Contrast:** Sets the various parameters.
- Sharpness:** Sets the various parameters.
- Color Saturation:** Sets the various parameters.
- Load Settings:** Loads the contents of a parameter set saved to the computer's hard disk.
- Save Settings:** Saves the parameter set to the computer. To load the saved parameter set, click [Load Settings].
- Apply to Camera:** Applies the current parameter set to the camera.
- Add Set:** Click here first to add a new parameter set to the camera.

Converting RAW Images

Images shot in the RAW format (hereafter RAW images) are recorded without the image quality being reduced by signal processing or lossy compression. Please refer to your Camera User's Guide to learn how to set the camera to shoot in the RAW format.

High-quality RGB images can be obtained from RAW image file data. When a RAW image is converted, you can also choose to adjust its quality settings to obtain an image of a higher caliber than if it had first been loaded into image editing software.

Please note that ZoomBrowser EX or the TWAIN Driver are required to load RAW images onto a computer.

Please see page 48 for further information about the RAW image format.

Converting RAW Images without Adjusting the Quality

1. Select a RAW image from the Thumbnail Display Area of the TWAIN Driver window.
2. Click the [Acquire] button.
The image will be converted and sent to Adobe Photoshop LE at 8 bits per RGB. To learn how to change the file transmission format, please see "How to Change the File Transmission Format" on the next page.

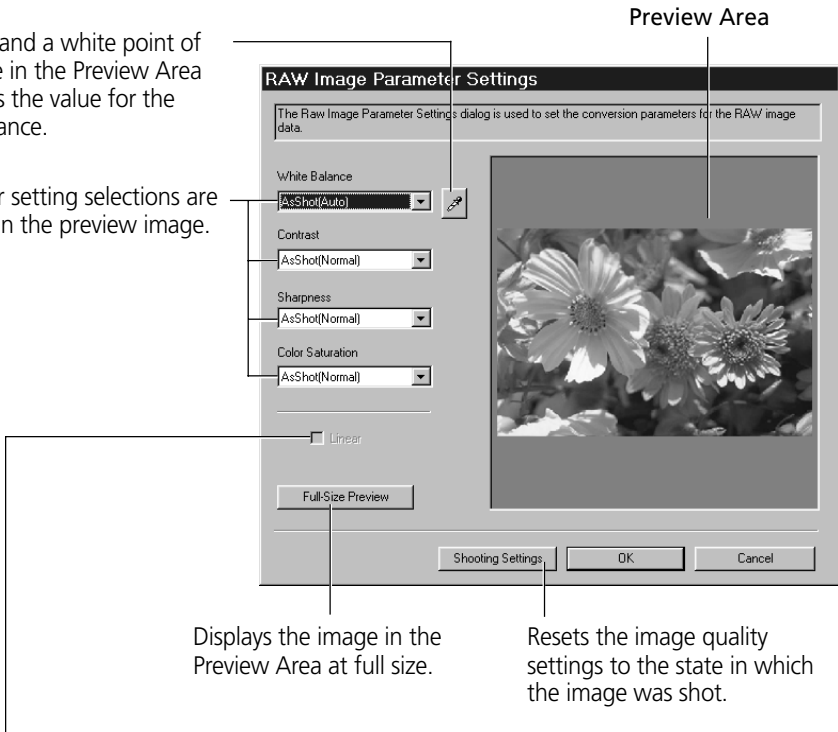
Converting RAW Images with Quality Adjustment

1. Select a RAW image from the Thumbnail Display Area of the TWAIN Driver window.
2. Click the TWAIN Driver [Set RAW Param.] button.
The RAW Image Parameter Settings dialog will display.
3. Select the quality settings and click [OK].
When an image is adjusted, the "RAW" symbol shown on its thumbnail will change from gray to green. If multiple RAW images are selected, the parameters are applied only to the first image. When only one RAW image is adjusted, the changes are also reflected in the remaining images in the selection.
4. Click the [Acquire] button.
The RAW image will be converted according to the specified parameters and the data will be sent to Adobe Photoshop LE at 8 bits per RGB channel. To learn how to change the file transmission format, please see "How to Change the File Transmission Format" on the next page.
 - The image quality settings return to the default settings when the TWAIN Driver is closed. The settings will also be reset to the defaults if the connection to the camera is broken, or if the TWAIN Driver window is refreshed as a result of an image being shot or deleted with the camera while it is connected.

RAW Image Parameter Settings Dialog

Click this and a white point of the image in the Preview Area to set it as the value for the white balance.

Parameter setting selections are reflected in the preview image.



Displays the image in the Preview Area at full size.

Resets the image quality settings to the state in which the image was shot.

Placing a check here applies linear processing to the contrast, sharpness and color saturation.

- The [Linear] option is only enabled when [16 bits per color channel] is selected as the transmission format.

How to Change the File Transmission Format

1. Click the [Preferences] button in the TWAIN Driver window.
The Preferences dialog will display.
2. Change the transmission format in the [Send RAW image data to the application] option and click [OK].

About 16-Bit Transmissions

When [16 bits per color channel] is selected as the transmission option for RAW images, images can be transmitted to the application at 16 bits per RGB channel. Although colors are expressed more vividly with the 16-bit setting than the 8-bit setting, the file size increases dramatically. Moreover, some image editing applications function only partially with files of this format or cannot open them at all.

About the RAW Image Format

The camera uses two standard image file formats: JPEG and RAW. In JPEG mode, the camera processes images after capturing them to produce optimal results. With this format, images are compressed so more can be stored on a single CF card. However, the compression is irreversible, meaning that the original image data cannot be recovered after processing. In contrast, the RAW format records the image data as captured by the camera's CMOS without further processing. RAW images are compressed, but the compression is reversible so that a high-quality image can be obtained from the decompressed file without any loss of image quality. Although a RAW file is larger than an equivalent JPEG file, it is still only approximately one-third the size of an uncompressed file (RGB TIFF), making it relatively compact.* Please see the Camera User's Guide to learn how to set the camera to shoot in RAW mode.

The process of obtaining a high-quality RGB signal from a RAW image is called "conversion." Even if you use ZoomBrowser EX or the TWAIN Driver to adjust the image quality of the original image data in some way, the image retains its original high quality. In contrast, other standard uncompressed file formats, such as RGB TIFF, are processed in the camera and further processed by the retouching software, which reduces the image quality.

Please note that the ZoomBrowser EX or the TWAIN Driver programs are required to open or adjust RAW images on a computer.

* As measured by standard Canon test conditions.

Troubleshooting the USB Driver Installation

Check This First

1. Is the camera connected to the computer correctly? (→ p. 10)
2. Is the camera's main switch set to [On]?
3. Is the battery charge sufficient?

We suggest that you use the AC adapter to power a camera connected to a computer.

You will not be able to check the USB driver status if there is a problem with any of the items above.

If the "Add New Hardware Wizard" (in Windows 2000 it is the "Found New Hardware Wizard") appears while performing any of the steps above, reinstall the USB driver using the procedures in the Installing the USB Driver section. (→ p. 11, 14)

If the three potential problems above are OK, first uninstall the USB driver with the procedures below before reinstalling it according to the instructions in the Installing the USB Driver section. (→ p. 11, 14)

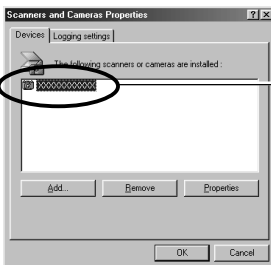
Uninstalling the USB Driver from Windows 98

Check the USB Driver Status

- Does your camera model name appear in the Windows "Scanners and Cameras Properties" dialog?

Display the "Scanners and Cameras Properties" dialog with the following steps.

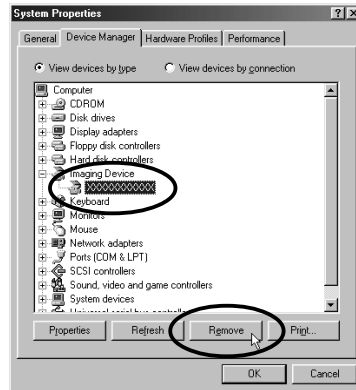
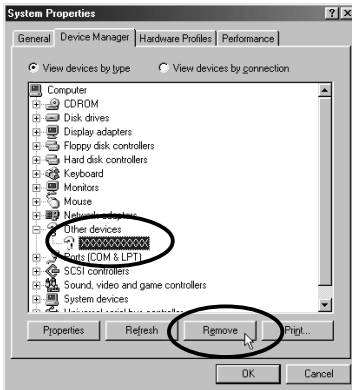
1. Click the [Start] menu and select [Settings] and [Control Panel].
2. Double-click the [Scanners and Cameras] icon.



Check to see if your camera model appears here. The names of scanners and other devices for which drivers have already been installed will show in this window.

What to Do if Your Camera Model Name Is Not in the “Scanners and Cameras Properties” Device List or if the [Scanners and Cameras] Icon Is Not in the Control Panel

1. Double-click the [System] icon in the Control Panel and check the [Device Manager] tab.
2. Check the [Other devices] or [Imaging Devices] categories for an item corresponding to your camera model. Delete it with the following procedures.



1. Select the item corresponding to your camera model and click the [Remove] button.
2. Click the [OK] button in the confirmation dialog.
3. Click the [OK] button to close the “System Properties” dialog.

Delete all copies if the item corresponding to your camera model appears in more than one category, such as the [Imaging Devices] and [Other Devices] categories, or if it is duplicated in the [Other Devices] category.

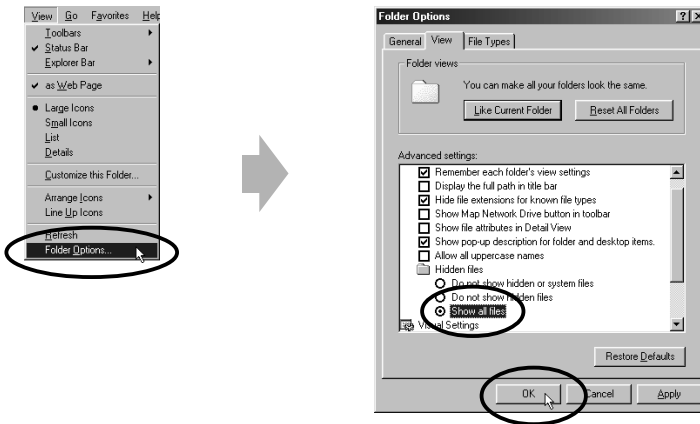
3. On the Windows desktop, double-click the [My Computer] icon, [C:] icon, [Windows] folder, and [Inf] folder in succession.



What to Do if the [Inf] Folder Is Not Visible in the [Windows] Folder

- Follow the procedures below to set the folder options to the “Show all files” setting.
 - Click the [View] menu and select [Folder Options].
 - Click the [View] tab.
 - In the [Hidden files] category, select [Show all files].
 - Click the [OK] button to close the “Folder Options” dialog.

This will show all the previously hidden files.



- Find and delete the [Drvdata.bin] and [Drvidx.bin] files.



The [Inf] folder contains numerous files. Ensure that you double-check the file names before you delete any files. Deleting the wrong file may, in the worst case scenario, result in the failure of your computer to run the Windows operating system.

- Double-click the [Other] folder inside the [Inf] folder.

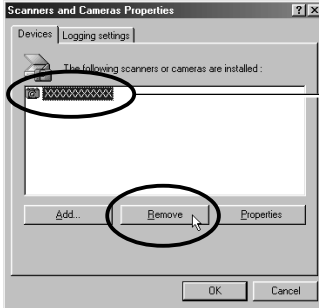


- Find and delete the [Canon.IncCanon_DC] file.
Skip this step if this file is not present in the [Other] folder.



What to Do if Your Camera Model Appears in the “Scanners and Cameras Properties” Device List

1. Select the name of your camera model and click the [Remove] button.



Your camera model name will appear here.

2. Click [OK] to close the “Scanners and Cameras Properties” dialog.
3. Delete the [Drvdata.bin], [Drvdx.bin] and [Canon.IncCanon_DC] files using steps 3 to 6 on pages 50 to 51.

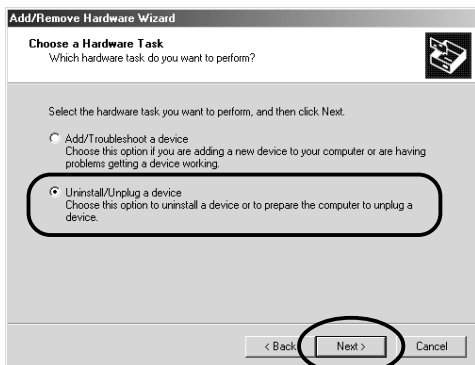
Uninstalling the USB Driver from Windows 2000

Begin by logging onto the computer as an Administrator and then uninstall the USB driver.

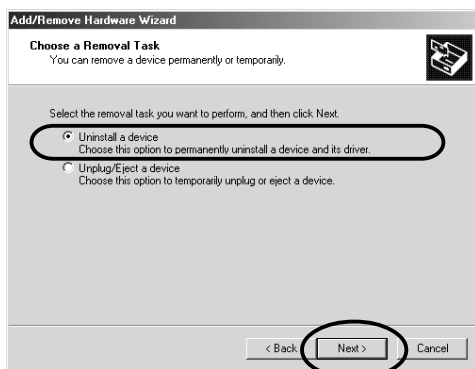
1. Double-click the [Add/Remove Hardware] icon in the control panel. After the “Add/Remove Hardware Wizard” starts, click the [Next] button.



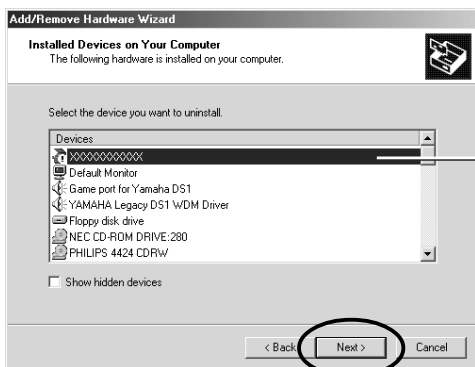
2. Select [Uninstall/Unplug Device] and click the [Next] button.



3. Select [Uninstall a Device] and click the [Next] button.

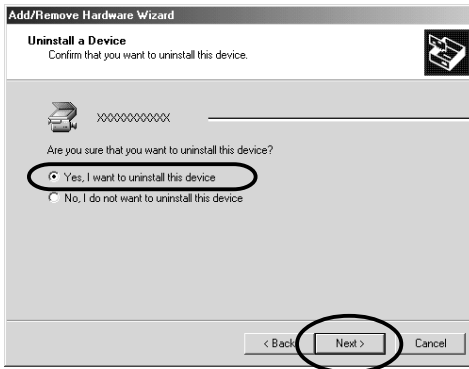


4. Select the name of your camera model from the list that displays and click the [Next] button.



Your camera model name will appear here.

5. In the dialog shown below, select [Yes, I want to uninstall this device] and click the [Next] button.



Your camera model name will appear here

Click the [Finish] button when the “Add/Remove Hardware Wizard complete” message displays.

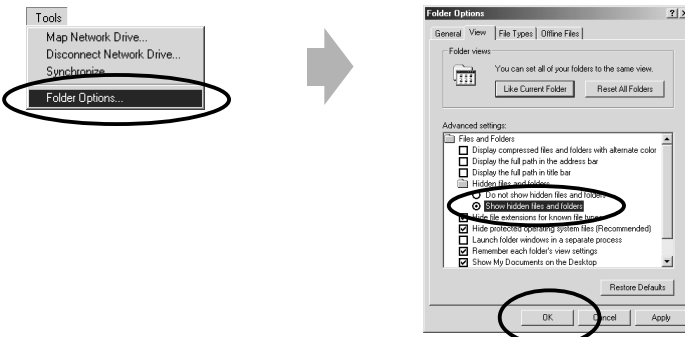
6. On the desktop, double-click the [My Computer] icon, [C:] icon, [Winnt] folder, and [Inf] folder in succession.



What to Do if the [Inf] Folder Is Not Visible in the [Winnt] Folder

1. Open the [Winnt] folder.
2. Click the [Tools] menu and select [Folder Options].
3. Click the [View] tab.
4. In the [Advanced Settings] category, find the [Hidden Files and Folders] subcategory and select [Show hidden files and folders].
5. Click the [OK] button to close the “Folder Options” dialog.

This will show all the previously hidden files and folders.



7. Look for files starting with [Oem*].

A number such as 0 or 1 will appear in place of the "*" after the "Oem" prefix in the file name.

For each [Oem*] file there is a companion [Oem*.pnf] file with the same number following the "Oem" prefix (e.g. the Oem0 and Oem.pnf files form one set of Oem files).

- Please note that numerous groupings of "Oem0" files may be present in the [Inf] folder.

8. Search for the [Oem*] files for Canon digital cameras.

Double-click a file to open it in the Windows Notepad accessory and look for [;*** Canon Digital Camera USB Setup File ****] in the first line. If you find it, note down the file name and close Notepad.

9. Delete the [Oem*] file and corresponding [Oem*.pnf] file.

Ensure that you have the correct files before deleting them.

The [Inf] folder contains numerous files. Ensure that you double-check the file names before you delete any files. Deleting the wrong file may, in the worst case scenario, result in the failure of your computer to run the Windows operating system.

Using the Software on the Macintosh Platform

Introducing the Software	58
Camera and Software Compatibility	60
System Requirements	61
Installing/Uninstalling the Software	62
Connecting the Camera to a Computer	64
Selecting a Connection Method	64
Connecting to a USB Port	65
Connecting via a CF Card Reader or PC Card Slot	67
Using ImageBrowser the First Time (From Loading to Printing)	68
Using Additional ImageBrowser Functions	75
Displaying Images	75
Organizing Images	77
Erasing Images	78
Saving Computer Images to a CF Card in the Camera	79
Adding Sound Annotations to Images	79
Merging Panoramic Images with PhotoStitch	79
Adjusting Images for Transmission by E-mail	80
Editing and Applying Special Effects to Images	80
Editing the Print Order Settings (DPOF)	81
Shooting with the RemoteCapture Function	82
Converting RAW Images	85
Loading Images with Plug-In Compliant Application Programs (Adobe Photoshop, etc.)	87
Setting the Parameters	91
Converting RAW Images	92
Troubleshooting the Computer Connection	95
Customer Support	96

Introducing the Software

This section introduces the powerful software programs for the Macintosh platform contained on the CD-ROMs (2) included with the camera.



Canon Digital Camera Solution Disk

ImageBrowser

To load camera images, start ImageBrowser.

Camera Connection Functions

(Also effective for CF card readers or PC card readers)

- Displays camera images.
- Downloads camera images to the computer.
- Loads and saves RAW images in the RAW format
- Converts and saves RAW images in other formats
- Saves computer images to a CF card in the camera.
- Connecting to a USB port automatically starts ImageBrowser and displays the camera images.
- Sets the camera parameters.

Image File Management Functions

- Displays, moves, copies or deletes images stored on computer disks.
- Allows simple editing procedures, such as image color adjustments and cropping.
- Displays all the files in a specified folder at once.
- Displays files in chronological order in a window that looks like a time tunnel.
- Replays images from the computer one-by-one at full screen size to simulate a slide show.

Image Printing Functions

- Prints multiple images on the same page.
- Allows you to freely resize images and change layouts.
- Allows you to place titles or captions anywhere on the page.

Supports PhotoStitch Panoramas

- Allows you to select camera images or images registered with ImageBrowser and start PhotoStitch from within ImageBrowser to merge a series of images into a panorama in a few simple steps.

Supports the Adobe Photoshop LE Photo Retouching Program

- This photo-retouching program can be used to edit and apply special effects to your images if it is installed and started.

Adjusting Images for Transmission by E-mail

- Allows you to adjust image size and compression settings so that large image files can be made smaller for transmission as e-mail attachments.

PhotoStitch

- Effortlessly merges images that are shot over several frames with a camera.
- Merges any number of images horizontally or vertically, or in a matrix format.
- Makes images with straight lines appear natural not crooked when merged. (Select the wide display format.)
- A 360-degree scene shot in several frames can be merged into a 360-degree image and saved in the QuickTime VR format, making it appear as if you were standing in the middle of the image looking about in all directions.

RemoteCapture

- Connecting via a USB port allows you to release the EOS D30's shutter button from the computer. The images are loaded directly into the computer.
- Connecting via a USB port also allows you to load images directly into the computer by clicking the camera's shutter button.
- Allows interval shooting with custom interval and frame settings.

Plug-In Module

Canon Digital Camera Plug-In Module

The Plug-In Module is the driver utility program that works within plug-in compliant application programs, such as Adobe Photoshop LE, to load camera images directly into the application program. The Plug-In Module is started from within the plug-in compliant application program. It cannot be used as a stand-alone program.



Adobe Photoshop LE CD-ROM

Adobe Photoshop LE

- Allows you to edit images, apply special effects, print and create sophisticated graphics for the web.

Camera and Software Compatibility

The Canon Digital Camera Solution Disk contains a number of software programs and drivers. Check the chart below for the compatibility of your particular camera model with each program's special functions.

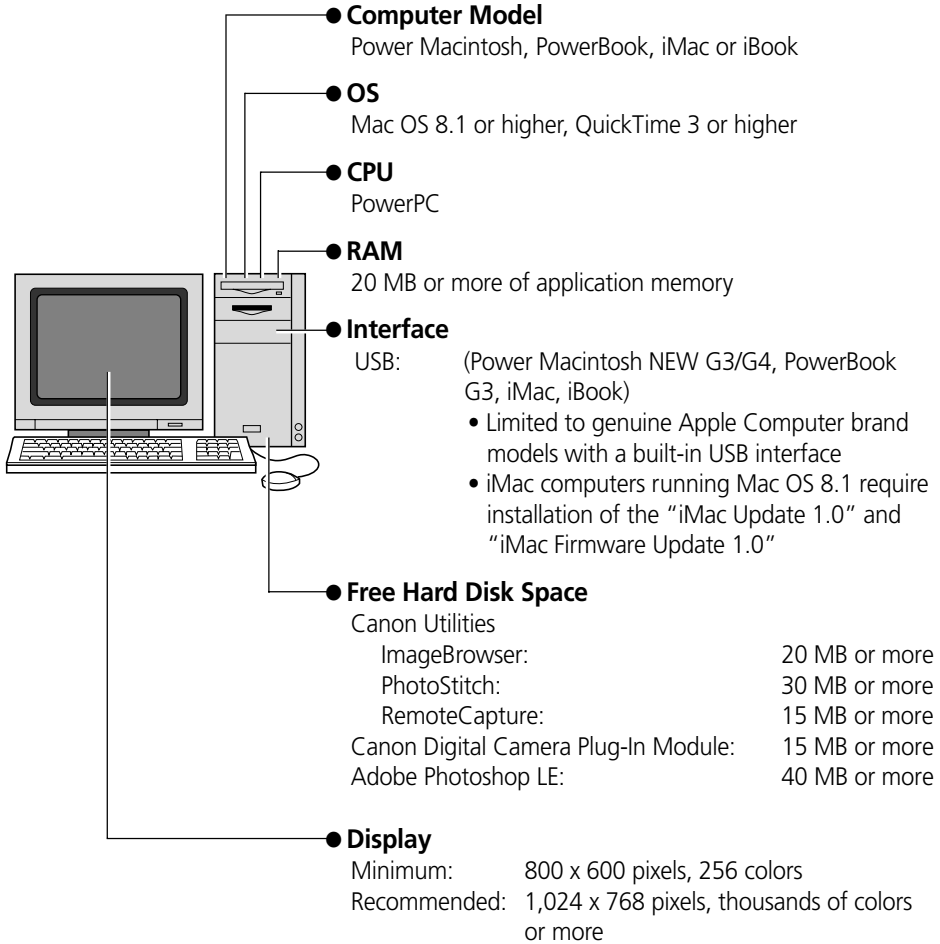
Function		Software		Model							
				EOS D30	DIGITAL IXUS	PowerShot Series					
						S100	S10/S20	A50	Pro70 A5 Zoom A5	350	600
Computer Interface	USB*1	●	●	●	●	–	–	–	–		
	Serial	–	–	–	●	●	●	–	–		
Downloading From Camera	ImageBrowser	●	●	●	●	●	●	–	–		
Downloading From External Card Reader	ImageBrowser Plug-In Module	●	●	●	●	●	●	●	●		
RAW Image Conversion	ImageBrowser Plug-In Module	●	–	–	–	●	●	–	●		
Uploading to Camera	ImageBrowser	●	●	●	●	●	–	–	–		
Shooting from the Computer	RemoteCapture*2	●	–	–	–	–	–	–	–		
Editing Camera Print Settings (DPOF)	ImageBrowser	●	●	●	●	●	–	–	–		
Editing Camera Slide Show	ImageBrowser	–	–	–	●	●	●	–	–		
Merging Images Shot in Stitch Assist Mode	PhotoStitch	–	●	●	●	●	●	–	–		

*1 Only compatible with Power Macintosh NEW G3/G4, PowerBook G3, iMac and iBook models with built-in USB ports.

*2 Only compatible with the USB interface.

System Requirements

The following system requirements must be met to install and operate the software.



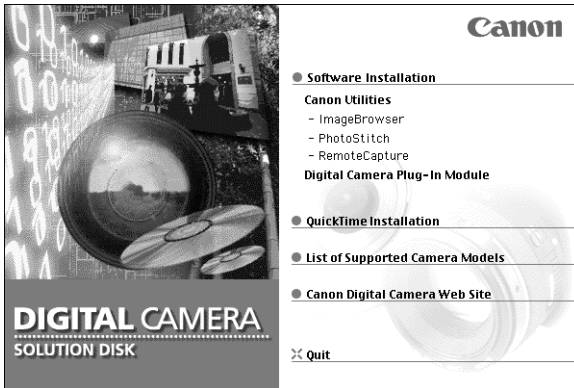
- A CD-ROM drive is required to install the software.
- Plug-In Module is compatible with Adobe Photoshop 3.0 and higher versions.

Installing/Uninstalling the Software

Installing from the Canon Digital Camera Solution Disk

1. Close any programs that are running.
2. Place the Canon Digital Camera Solution Disk in the CD-ROM drive.
3. Double-click the [CD-ROM] icon and the [Canon Digital Camera Installer] icon.

The installer panel will display.



4. Click [Software Installation].
5. Select the programs you wish to install and follow the on-screen instructions to install them.
6. Click the [Quit] button when the installation is complete and restart the computer if prompted.

Installing from the Adobe Photoshop LE CD-ROM

Place the Adobe Photoshop LE CD-ROM in the drive and double-click the CD-ROM icon, the [Adobe Photoshop LE] folder and the [Install Photoshop LE] icon. Follow the on-screen instructions to continue with the installation.

You must input the software serial number to install Adobe Photoshop LE. It can be found on the CD-ROM case.

Uninstalling the Software

To uninstall a program, drag its folders to the Trash. Be careful, however, not to accidentally delete any of your images that may be stored in these folders.

For instructions on how to uninstall the Plug-In Module, open the [Canon Utilities] folder and [Digital Camera Plug-In] folder and read the [ReadMe] file.

Connecting the Camera to a Computer

Selecting a Connection Method

The following different interfaces and methods can be used to connect the camera to a computer. Once a connection has been established using one of the methods, you can start the software and begin to load images from the camera (→ p. 68, 87).

Use the AC Adapter

- We suggest that you use the AC adapter while the camera is connected to a computer to conserve battery power.

USB Port (→ p. 65)

The USB interface can start the image loading software automatically.

USB Cable Connector Shapes

Camera End



Computer End



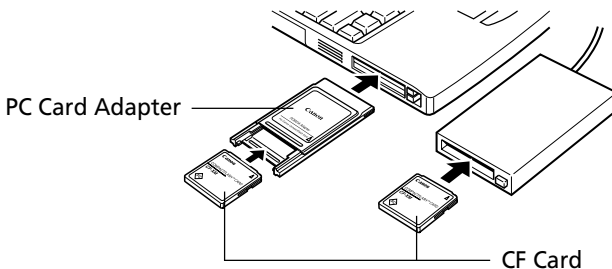
Computer USB Port



The USB port is marked with this symbol.

CF Card Reader or PC Card Slot (→ p. 67)

If you have a computer equipped with a PC card slot, a CF card reader or a PC card reader, you can place the camera's CF card into these devices to establish a direct connection. You will require a PC card adapter for PC card slots.



Connecting to a USB Port

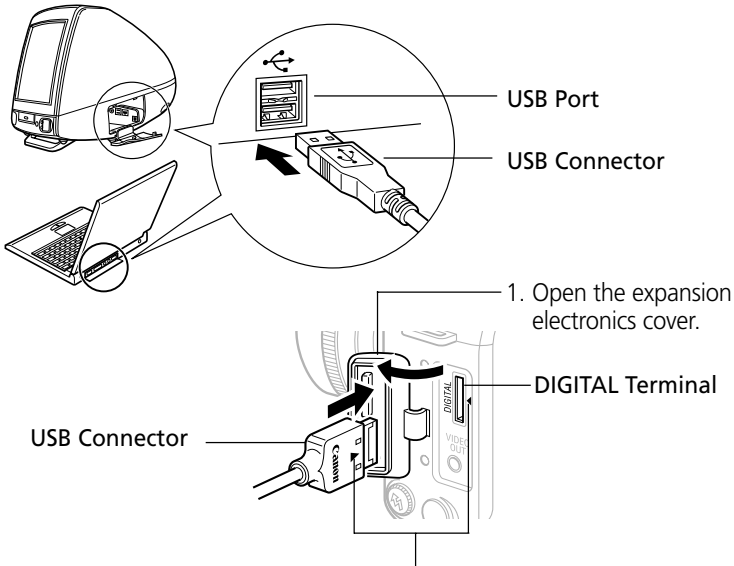
Requirements for the USB Interface

- The USB interface can only be used to connect the camera to genuine Apple Computer brand Power Macintosh New G3/G4, PowerBook G3, iMac and iBook models with built-in USB connectors.
- Connect the USB cable directly to one of the computer's main USB ports. The interface may not function correctly if the camera is connected via a USB hub.
- The interface may not function correctly while other USB devices, excluding USB mice and keyboards, are connected. If this problem arises, detach the camera and the other devices, and reconnect the camera only.

Important

- Please do not place your computer in the sleep mode while the camera is connected to its USB port. If the computer goes into sleep mode while the camera is connected to a USB port, do NOT disconnect the USB cable from the camera or computer. Try to revive the computer. If the USB cable is detached in sleep mode, some computers may not return to active mode correctly. For instructions regarding the sleep mode, please consult the manual accompanying your computer and operating software.

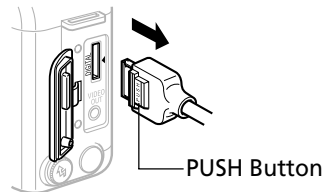
1. Attach the supplied USB cable to a USB port directly on the computer and to the DIGITAL terminal on the camera as shown below.
 - There is no need to turn the camera or computer power off when attaching or detaching the USB cables.
 - Please consult your computer's manual for the location of the USB ports.



2. Insert the connector so that the ► marks on the connector and camera align.

Precaution for Unplugging Cables from the DIGITAL Terminal

- Always **press the PUSH button** on the connector to detach the cable from the camera's DIGITAL terminal.

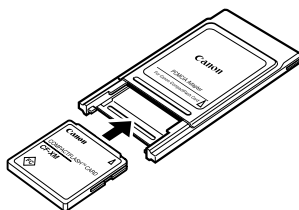


Connecting via a CF Card Reader or PC Card Slot

To load images directly from a CF card to a computer, eject the card from the camera, place it in a separately sold PCMCIA card adapter (PC card adapter) and insert the assembly into the PC card slot.

The adapter is not required if your computer is equipped with a CF card reader. Place the CF card directly into the reader.

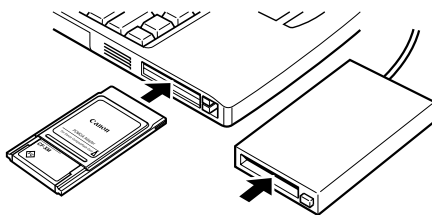
1. Place the CF card in the PC card adapter.



Place the CF Card in the Adapter.

2. Insert the loaded PC card adapter into the computer's slot or PC card reader.

The requirements for the power being on or off when the PC card adapter is inserted differ according to the product. Please consult the manuals accompanying your equipment.



Insert the Adapter in the Slot.

Using ImageBrowser the First Time (From Loading to Printing)

This section provides a simple explanation of the procedures for using ImageBrowser to perform each of the steps from loading to printing. Please refer to the ImageBrowser Help file for more details.

What to Do if a Warning Dialog Displays


- If a set period of time passes without a camera function being accessed when the camera is connected via the USB interface, a message on the computer display will ask if you wish to remain connected. If you do not access a function, the camera will close the connection after an additional minute passes. The time required for the message to display will vary with the camera's auto power off setting. Please see the Camera User's Guide for details. (The message will not display and the camera will not disconnect if an AC adapter is used or auto power off is turned off.)
- To reconnect the camera, press the camera's shutter button.

Starting ImageBrowser

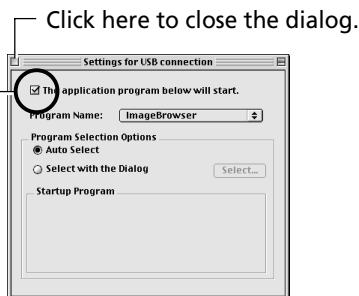
USB Interface

1. Attach the camera to the computer with the USB cable. (→ p. 66)
2. Set the camera's main switch to [On].
ImageBrowser will start automatically and display the Communication Settings dialog.
3. Confirm that [USB Port] and your camera model are selected and click the [Set] button.
The images from the camera will display as small thumbnail images in the ImageBrowser Camera Window. (→ p. 70)

How to Set ImageBrowser to Not Start Automatically

1. Open the Apple menu  and select [Control Panels] and [Canon USB Camera].
The "Settings for USB Connection" dialog will display.
2. Click the [The application program below will start.] option to clear the check mark.
3. Click the close box at the upper left to close the dialog. ImageBrowser will cease to start automatically thereafter.

Clear the check mark to stop ImageBrowser from automatically starting.



CF Card Reader or PC Card Slot Interface

1. Place the CF card into the CF card reader or into the PC card adapter and then into the PC card slot. (→ p. 67)
2. Start ImageBrowser.
Double-click the [Canon ImageBrowser] icon on the desktop to start the program.

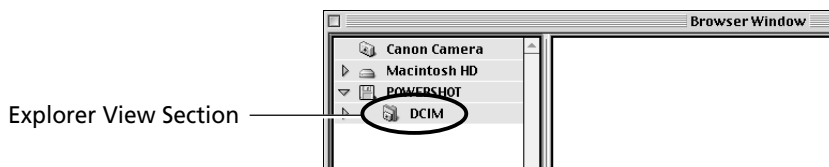


Canon ImageBrowser Icon

Canon ImageBrowser

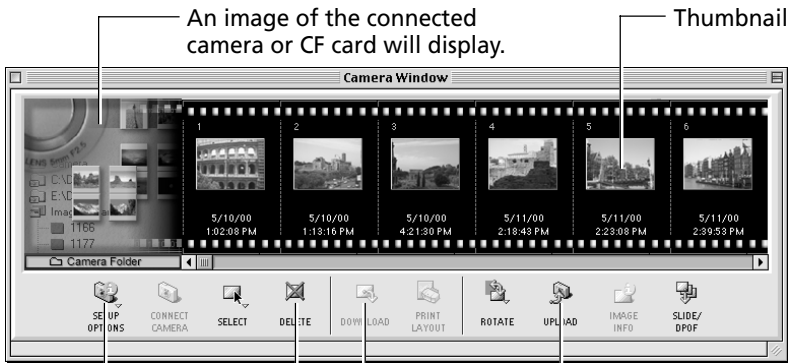
If the [Canon ImageBrowser] icon does not appear on the desktop, open the [Canon Utilities] folder and [ImageBrowser] folder and double-click the [ImageBrowser] icon.

3. Double-click the [DCIM] folder in the Explorer View Section.
The images from the CF card will display in ImageBrowser Camera Window as small thumbnail images. (→ p. 70)



The ImageBrowser Camera Window

The Camera Window will open when a connection to a camera or CF card is initiated. Thumbnail (small) images will display.



SETUP OPTIONS Button
Sets various camera settings (see inset below) using the computer.

DELETE Button
Deletes the selected images.

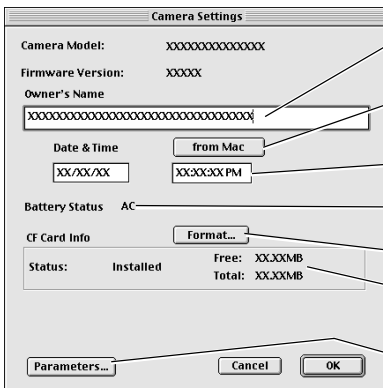
DOWNLOAD Button
Copies selected images to the computer from the camera or CF card. (→ p. 72)

UPLOAD Button
Copies images from the computer to the camera or CF card. (→ p. 79)

How to Check and Change Various Camera Settings

- You can adjust the date, time and owner settings in the Camera Settings dialog using the computer when the camera is connected. You can also check the battery charge and remaining memory capacity.

- Click the [SETUP OPTIONS] button.
- Check or change the settings.



Input a camera owner name here. (up to 31 characters)

Click this button to synchronize with the computer's date and time settings.

Set the date and time.

Check the battery charge here.

Formats the CF card in the camera.

Check the remaining memory capacity here.

Sets the camera parameters (→ p. 91)

Loading and Saving Images from the Camera

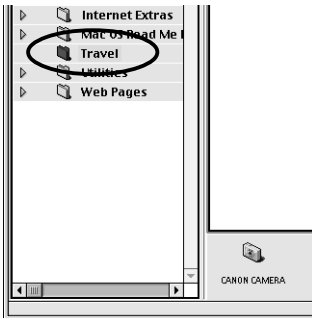
1. Select [Macintosh HD] in the Explorer View Section.



2. Create a new folder in which to save the images from the camera. Open the [File] menu and select [New Folder]. A folder with the name "Untitled" will be created. Click the folder and change the name as you wish.

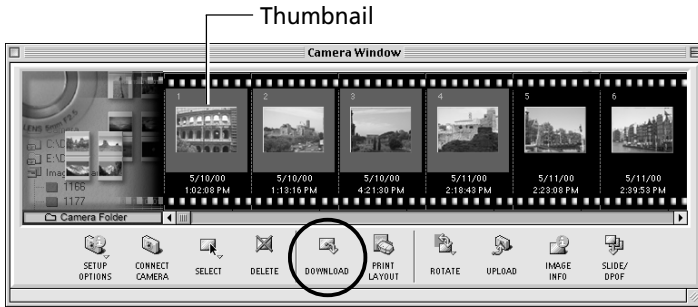


3. Select the new folder in the Explorer View Section.



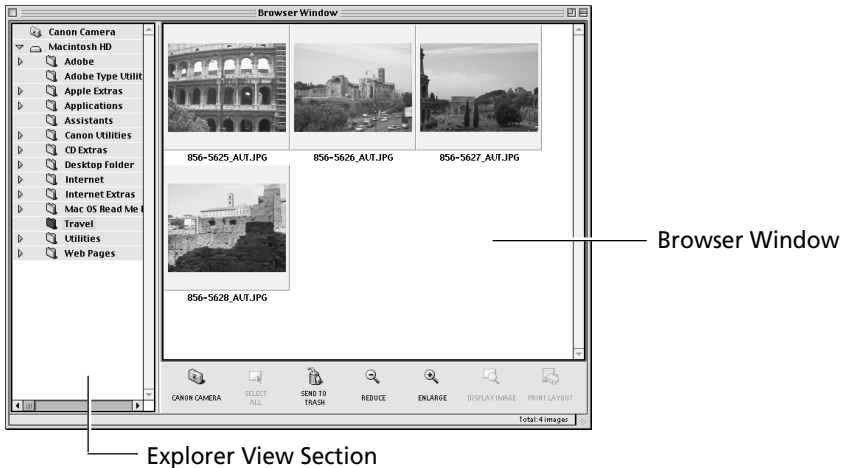
4. Select the images that you wish to download from the Camera Window and click the [DOWNLOAD] button.

Click the thumbnail you wish to select or press [Shift] and click to select multiple thumbnails.



The downloaded images will be saved to the computer disk and appear in the Browser Window.

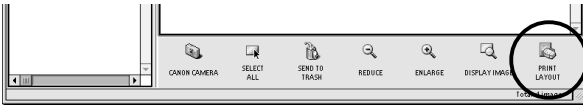
- You can also download images to the computer by dragging them from the Camera Window and dropping them on the Browser Window or Explorer View Section.



To disconnect the camera, click the close box at the upper left of the Camera Window. The Camera Window will close.

Printing Images

1. Select the image(s) you wish to print and click the [PRINT LAYOUT] button. The Print window will display with the images arranged in an auto layout.



2. Adjust the print settings if you wish to change the page layout.
3. Click the [PRINT] button in the Print window.

Print Window

Please see the ImageBrowser Help file for more details on the Print window.

The Print window shows a preview of a printed page titled "Landscape in Europe". The page contains three images with captions: "Lake of Northern Netherlands", "Great Not Retired Windmills", and "Waterway in the Town". A text block follows the third image: "This time, I voyaged around the Swiss Alps from Italy, and chose a route to go to Southern France. Leaving the Youth Hostel of this town behind, I crossed the Swiss border and spent one long little trail. Trailing around Mt. Blanc, for two days, I finally reached the border to France."

Annotations and their corresponding actions:

- Change the Image Size:** Drag the border to resize the image.
- Edit the Page Title:** Open the [Edit] menu and select [Edit Header].
- Change the Layout:** Drag the images to change the layout.
- Add Text:** Open the [Edit] menu and select [Add Text].
- Add a caption to an image:** Click an image and select [Edit Caption] from the [Edit] menu.
- Click this to reset the image layout to the initial setting:** RE-LAYOUT button.
- Click this to rotate the selected image:** ROTATE button.
- This button displays the Print dialog:** PRINT button.
- Click this to select a layout type:** LAYOUT OPTIONS button.
- This changes the default number of images printed per page:** Images Per Page (set to 3).

Setting the Image Size for Printing

Fixed Photo Sizes

Images can be printed at standard photo print sizes.

Since the images are printed without gaps between them, they look like photo prints when they are cut with a cutter.

1. Click the [Layout Options] button in the Print window.
The Layout Options dialog will display.
2. In the [Layout Type] category, select [Fixed Photo Size].
3. Set the photo size and click [OK].

Printing on Canon Perforated Paper

The [Canon Perforated Paper] option will be selectable in the Layout Options dialog if you are using a Canon BJ printer that supports Canon Perforated Paper media. Canon Perforated Paper has perforations at the preset dimensions allowing you to print at the specified size and simply tear along the perforated lines to produce an image with the appearance of a finished photo print. Please consult the BJ Solutions Disk operating guide for your printer for more details.


The [Photo Paper Pro 4" x6"] paper stock included in the [Settings] category will be available for purchase starting from February 2001.

Using Additional ImageBrowser Functions

This section explains the additional features of ImageBrowser. Please refer to the ImageBrowser Help file for more details.

Displaying Images

Zooming Images In and Out

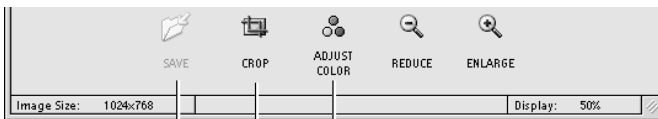
You can zoom images in and out by clicking the  (REDUCE) or  (ENLARGE) button.

Zooming a Single Image

Double-click an image in the Browser Window to display it in the Viewer Window.



About the Viewer Window Edit Panel



SAVE Button

Saves the edited image as a new file.

ADJUST COLOR Button

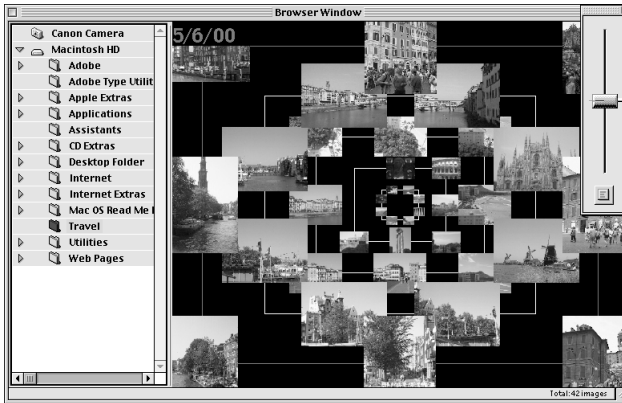
Color, brightness and contrast can be adjusted in the Adjust Color dialog.

CROP Button

Drag the mouse cursor to select a crop area and click the [CROP] button to trim unwanted portions of images.

Displaying Images in Chronological Order

Select a folder, choose the [Display] menu and select [Switch to TimeTunnel]. All of the images in the selected folder will display in a time tunnel. To return to the Browser Window, choose the [Display] menu and select [Switch to Browser View].



Drag the tab up or down to go backward or forward in time.

Showing Images in a Slide Show

The slide show function displays images saved onto the computer disk one-by-one at full-screen size as if they were part of a slide show.

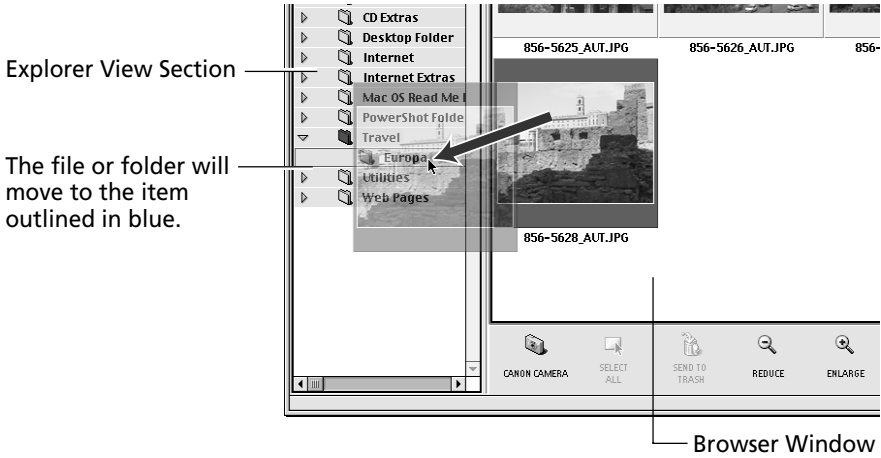
1. Click the [Display] menu and select [Slide Show Options].
2. Select a play method.
The "Slide Show Options" dialog will display. Set a play interval and a transition effect and click the [OK] button.
3. Select images from the ImageBrowser Browser Window for showing.
4. Click the [Display] menu and select [Slide Show].
The selected images will play in order. The slide show will close after the last image is displayed. If the slide show is set to repeat, press the [Esc] key to close the slide show.

Organizing Images

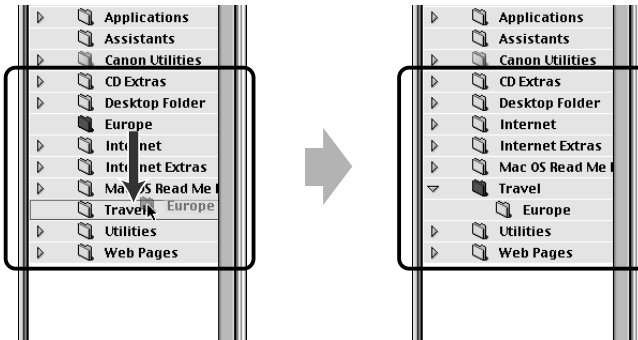
Changing the File Location

You can move an image file or folder by dragging and dropping it in another location.

(a) Drag and drop images from the Browser Window to another folder in the Explorer View Section.



(b) Drag and Drop a Folder within the Explorer View Section.



Refreshing the Contents of the Browser Window

If you have used the Macintosh Finder or another program to move or edit images that are registered with ImageBrowser, you should click the [Display] menu and select [Refresh].

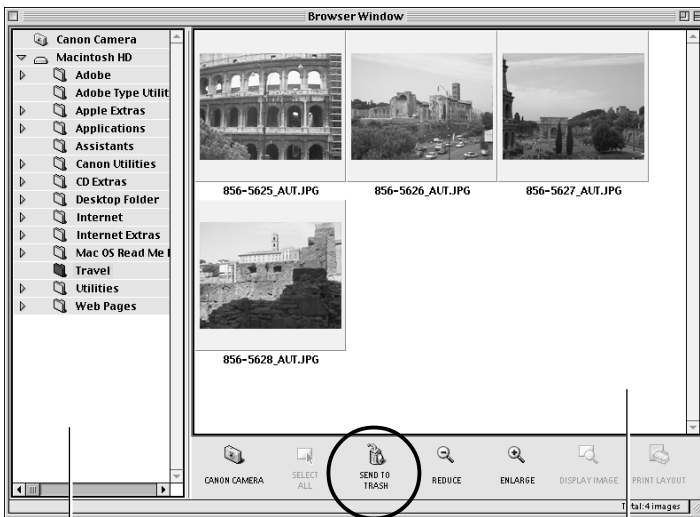
Erasing Images

Erasing Images Singly

Select the target image in the Browser Window and click the [SEND TO TRASH] button.

Erasing Images by Folder

1. Click the target folder in the Explorer View Section.
The images in the folder will display in the Browser Window.
2. Click the [SEND TO TRASH] button.



Explorer View Section

Click on a folder in the Explorer View Section to delete all its images in one step.

SEND TO TRASH Button

Browser Window

Click the image in the Browser Window to delete a single image.

The deleted image files and folders are moved to the Trash folder on the desktop. To restore the deleted items, open the desktop Trash folder and drag and drop the target files or folders to their original locations.

Saving Computer Images to a CF Card in the Camera

1. Open the Camera Window. (→ pp. 68-70)
2. Click the [UPLOAD] button in the Camera Window.
The “Select Images to Add” dialog will display.
3. Select the images from the computer and click the [Open] button.
The “Save to Camera” dialog will display.
4. Select image size and resizing options and click the [Save to Camera] button.
The selected image will be saved onto the camera’s CF card.

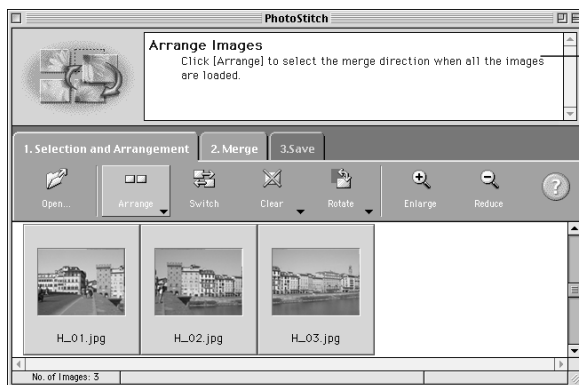
Adding Sound Annotations to Images

If your computer has a microphone, you can attach a sound annotation to an image by clicking it in the Browser Window, choosing the [Sound] menu and selecting [Record].

Merging Panoramic Images with PhotoStitch

To Merge Images Registered in ImageBrowser

- You can merge a series of overlapping images into a single, seamless panorama.
- Select the images in the browser area, choose the [Edit] menu and select [PhotoStitch]. The PhotoStitch program will start.
- Follow the instructions in the guidance window to merge the images.
- Please refer to the PhotoStitch Help file for more details.



Follow the instructions to merge the images.

Adjusting Images for Transmission by E-mail

You can adjust the image size and quality to reduce the file size of an image for transmission as an e-mail attachment.

- 1. Select the target image(s) in the Browser Window.**
- 2. Click the [File] menu and select [Create Image for Email].**
- 3. Adjust the image size and quality.**

The e-mail image creation window will display.
Set the image size and quality and follow the on-screen messages to complete the procedures.
- 4. Click the [Finish] button.**

When you click the [Finish] button, the image will appear in the [Email Images] folder and your e-mail program will start.
- 5. Create a new message.**

Drag and drop the image from the [Email Images] folder into the message. Input your message, a subject, the recipient's address and send the message.

 - Some e-mail programs will not start automatically. Start them manually if required.
 - The image file to be sent via e-mail will be saved to the [ImageBrowser.mail] folder in the [ImageBrowser] folder. If you cannot drag and drop the file from the [Email Images] folder, look for it in the [ImageBrowser.mail] folder and attach it to your message.

Editing and Applying Special Effects to Images

- 1. Confirm that Adobe Photoshop LE has been installed.**
- 2. Select an image from the Browser Window of ImageBrowser.**
- 3. Click the [Edit] menu and select [Adobe Photoshop].**

Please refer to the Adobe Photoshop LE Help file and electronic guide (User Guide.pdf) for instructions for this program.
- 4. Edit and apply special effects to the image.**
 - ImageBrowser supports the BMP, JPEG, PICT and TIFF file formats.
 - Click the [Display] menu and select [Refresh] to update the folder data.

Editing the Print Order Settings (DPOF)

You can specify which images on a CF card you wish to print as well as the number of copies. You can also select the print type and whether or not the shooting date and file number information is printed with the image. A convenient feature of these settings is that they comply with the DPOF (Digital Print Order Format) standards, which allow you to print on any DPOF-compliant digital printer or to order prints from a participating photo developing laboratory.

1. **Open the Camera Window. (pp. 68-70)**
2. **Click the [Slide/DPOF] button.**
The Edit Slide/DPOF window will display.
3. **Click [Print Order (DPOF)] at the window's upper left.**
4. **Select the print type from among the [Standard Print], [Index Print] or [Both] options.**
 - Standard .. Set the number of copies of the images you wish to print in the column below the thumbnails.
 - Index A check mark will appear below the thumbnails selected for printing.
5. **Click the [Save to Camera] button.**
The print order settings will be saved to the CF card in the camera.
6. **Click the [Quit] button.**

- A warning message will display if ImageBrowser encounters print settings data it does not support on a CF card with print settings created by a non-Canon brand DPOF-compliant digital camera. If any print settings on such a card are changed, all of them will be overwritten by ImageBrowser and lost.
- Some printers or photo developing laboratories may not be able to reflect all of the print settings in the output.

Shooting with the RemoteCapture Function

The RemoteCapture program will start if you click the ImageBrowser [Edit] menu and select [RemoteCapture]. RemoteCapture lets you activate the camera's shutter button remotely from the computer. The captured image is automatically saved into the ImageBrowser folder that is currently selected.

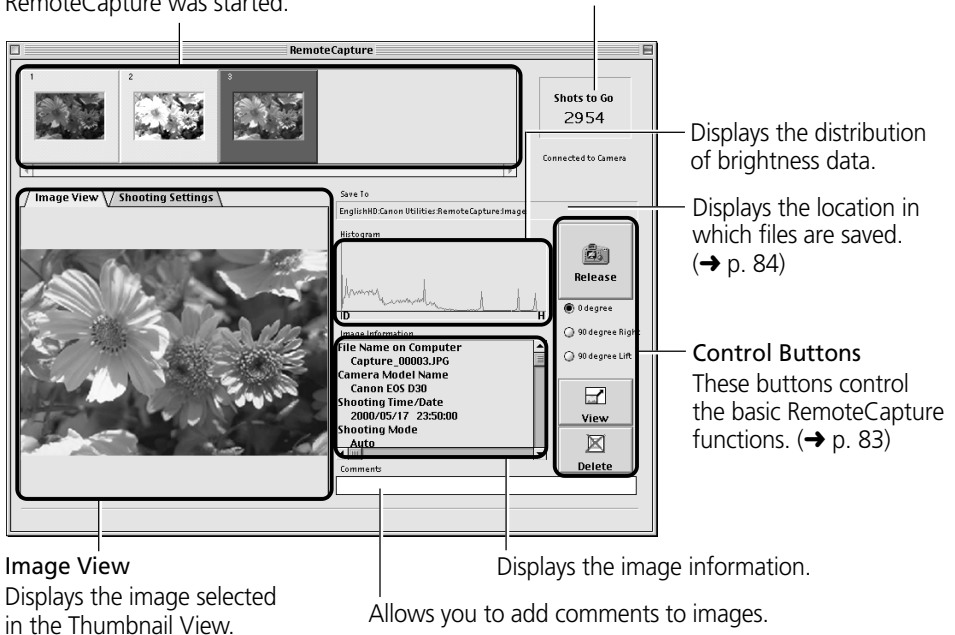
RemoteCapture Window

Thumbnail View

Displays thumbnails of all the images shot in the current session since RemoteCapture was started.

Number of Frames that Can Be Captured

Displays the number of images that can be saved to the computer or the camera's CF card.



How to Start RemoteCapture Instead of Displaying the Camera Window

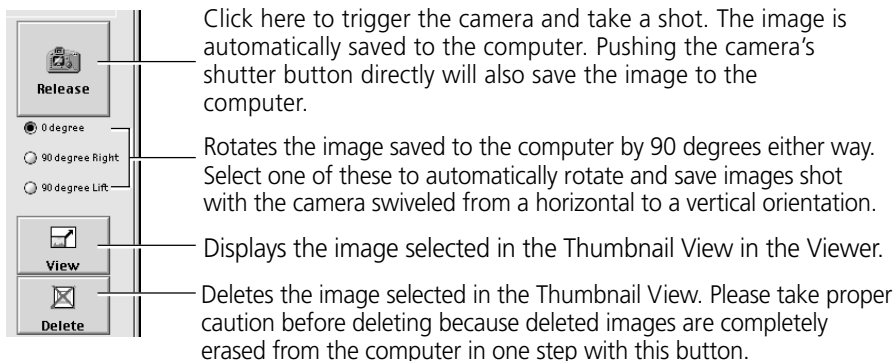
The settings can be changed so that ImageBrowser automatically starts RemoteCapture instead of its Camera Window when the camera is connected to the computer's USB port.

- (1) Click the ImageBrowser [Edit] menu and select [Preferences].
- (2) In the Preferences dialog, click the [Camera] tab and set [Camera Controls for USB Connection] to [Start RemoteCapture].

The RemoteCapture window will now show instead of the ImageBrowser Camera Window when the camera is connected to the USB port and starts ImageBrowser.

About the RemoteCapture Control Buttons

The control buttons are used to shoot, delete and display images.



Using Interval and Timer Shooting

RemoteCapture can be used to shoot a set number of images at specified intervals (Interval Shooting) or to shoot an image after a specified delay (Timer Shooting).

Interval Shooting

You can set the number of frames and the interval at which they are shot.

1. Click the [File] menu and select [Interval Shooting].
The Interval Shooting dialog will display.
2. Set the number of frames and interval value and click [Start].
RemoteCapture will start interval shooting, capturing the specified number of images at the specified intervals.

Timer Shooting

You can set the time delay before an image is shot.

1. Click the [File] menu and select [Timer Shooting].
The Timer Shooting dialog will display.
2. Set the number of seconds and click [Start].
RemoteCapture will start timer shooting, capturing an image after the specified delay.

Printing a Thumbnail Index Sheet

Thumbnails you select in the Thumbnail View can be printed in order on a single index sheet by clicking the [File] menu and selecting [Print Index]. Since the file name and shooting date and time can be printed with each image, index sheets serve as a convenient record of and reference for your images.

Precautions when Shooting with RemoteCapture

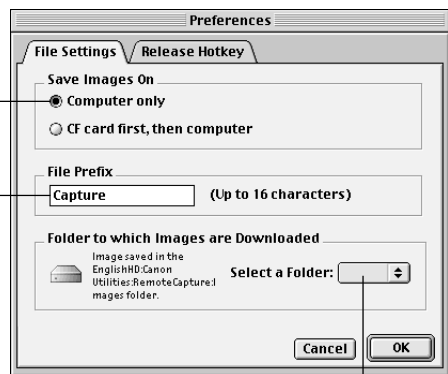
- The camera's shooting settings cannot be set from RemoteCapture. They must be set on the camera.
- If your computer is set to go into sleep mode, there is no guarantee that RemoteCapture will continue to function after the computer has entered sleep mode. Always turn off the sleep function before you start shooting with RemoteCapture.
- If the camera is set for "mirror lockup" shooting, the shutter will activate approximately two seconds after the release button is clicked in RemoteCapture.
- The camera's auto power save setting is disabled while connected to RemoteCapture, and the power remains on until manually turned off. You are recommended to power the camera with a household power source while it is connected.
- Please note that the camera will not be able to shoot at the specified interval if it is shorter than the time required to send the image and save it on the computer.

Changing the Save Location and Other Preferences

The Preferences dialog can be opened by clicking the RemoteCapture [File] menu and selecting [Preferences]. This dialog can be used to change the save location and settings.

Selects whether the image is saved only on the computer or on the camera's CF card too.

Sets the image file prefix. If the prefix is set to [Capture], for example, the first image will be named [Capture_00001.jpg] and successive images will have higher numbers.



Sets the folder in which the image file is saved.

Converting RAW Images

Images shot in the RAW format (hereafter RAW images) are recorded without the image quality being reduced by signal processing or lossy compression. Please refer to your Camera User's Guide to learn how to set the camera to shoot in the RAW format.

High-quality RGB images can be obtained from RAW image file data. When a RAW image is converted, you can also choose to adjust its quality settings to obtain an image of a higher caliber than if it had first been loaded into image editing software.

Please note that ImageBrowser or the Plug-In Module are required to load RAW images onto a computer.

Please see page 94 for further information about the RAW image format.

Converting RAW Images without Adjusting the Quality

1. **Select a RAW image.**

Select a RAW image from the Browser Window of ImageBrowser.

2. **Click the [File] menu and select [Convert RAW Images].**

The image is converted and saved in a new TIFF (8 bits/channel) file. To learn how to change the file format, please see "How to Change the File Format" on the next page.

Converting RAW Images with Quality Adjustment

1. **Select a RAW image from the Browser Window of ImageBrowser.**

2. **Click the [File] menu and select [Convert RAW Images with User Defined Parameters].**

The RAW Image Parameter Settings dialog will display.

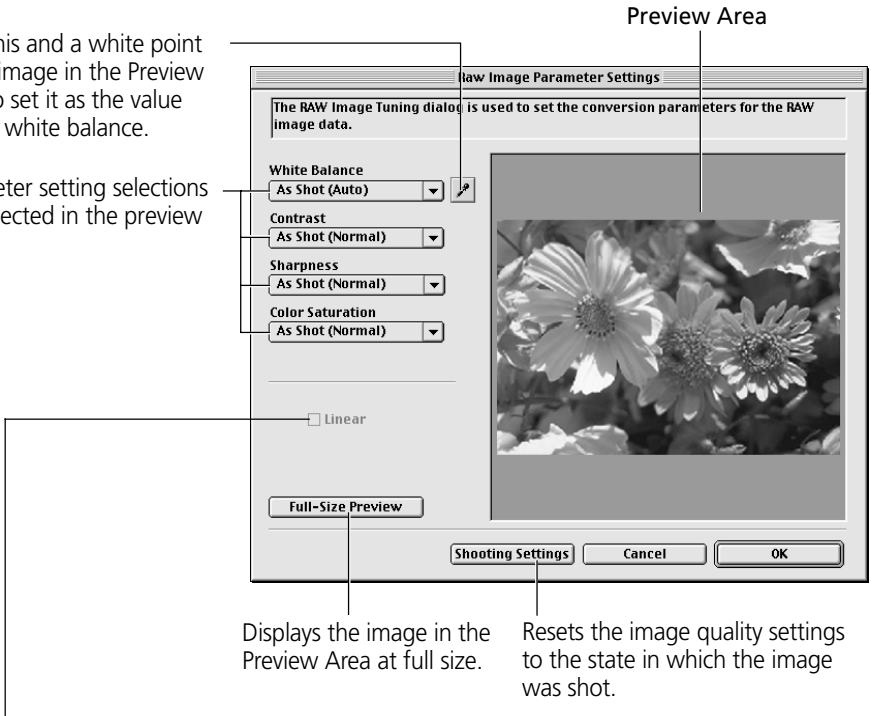
3. **Select the quality settings and click [OK].**

The RAW image is converted according to the specified parameters and saved in a new TIFF (8 bits/channel) file. If multiple RAW images are selected, the parameters are applied only to the first image. When only one RAW image is adjusted, the changes are also reflected in the remaining images in the selection. To learn how to change the file format, please see "How to Change the File Format" on the next page.

RAW Image Parameter Settings Dialog

Click this and a white point of the image in the Preview Area to set it as the value for the white balance.

Parameter setting selections are reflected in the preview image.



Displays the image in the Preview Area at full size.

Resets the image quality settings to the state in which the image was shot.

Placing a check here applies linear processing to the contrast, sharpness and color saturation.

- The [Linear] option is only enabled when [TIFF (16 bits/Channel)] is selected as the file format.

How to Change the File Format

1. Click the ImageBrowser [Edit] menu and select [Preferences].
The Preferences dialog will display.
2. Change the format selected in the [File Format] tab and click [OK].

About Saving in the TIFF 16 Bits/Channel Format

When [TIFF (16 bits/Channel)] is selected as the file format for saving RAW images, 16 bits of data is used to record each RGB channel. This image format can be used in several application programs, such as Adobe Photoshop LE. Formats other than TIFF (16 bits/Channel) all save the image using 8 bits per RGB channel.

Loading Images with Plug-In Compliant Application Programs (Adobe Photoshop, etc.)

This section explains how to load images with Plug-In compliant application programs using Adobe Photoshop LE as an example. Please refer to the manual for each application program for more details.

Installing the Software

Installing Plug-In Module

This program is required to load camera images into Plug-In compliant application programs. For instructions, see “Installing/Uninstalling the Software” (→ p. 62).

Installing Adobe Photoshop LE

Place the Adobe Photoshop LE CD-ROM in the drive and double-click the CD-ROM icon, the [Adobe Photoshop LE] folder and the [Install Photoshop LE] icon. Follow the on-screen instructions to continue with the installation.

You must input the software serial number to install Adobe Photoshop LE. It can be found on the CD-ROM case.

Copying Plug-In Module to the [Plug-Ins] Folder

1. Open the [Canon Utilities] and [Digital Camera Plug-In] folders.
2. Copy the [Canon Digital Camera] file to the Adobe Photoshop LE [Import/Export] folder.
Open the [Adobe Photoshop LE], [Plug-Ins] and [Import/Export] folders and copy the [Canon Digital Camera] file into the [Import/Export] folder.

Starting Adobe Photoshop LE

Connecting the Camera to a USB Port


1. Connect the camera to the computer’s USB port. (→ p. 66)
2. Set the camera’s main switch to [On].
Although ImageBrowser will automatically start after a moment, you need to close it at this point.
 - See page 69 to learn how to set ImageBrowser so that it does not start automatically.
3. Start Adobe Photoshop LE. (→ p. 89).

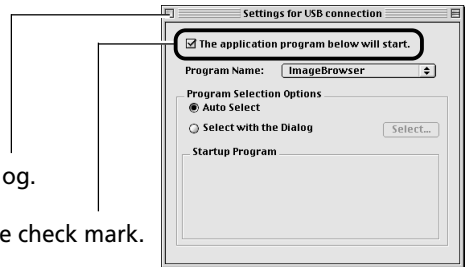
What to Do if the “ImageBrowser not found” Dialog Appears

If you install only the Canon Digital Camera Plug-In Module without ImageBrowser, the “ImageBrowser not found” dialog may display. If this happens, use the following procedures to prevent ImageBrowser from attempting to start automatically.

1. Click the [OK] button on the “ImageBrowser not found” dialog.
2. In the “Settings for USB connection” dialog, click the [The application program below will start.] option to clear the check mark.
3. Close the “Settings for USB connection” dialog.

This will prevent the “ImageBrowser not found” dialog from appearing again when the camera is connected.

- The “Settings for USB connection” dialog can be opened by choosing the Apple menu  and selecting [Control Panels] and [Canon USB Camera]. (→ p. 69)



Click here to close the dialog.


Click here to clear the check mark.

Connecting via a CF Card Reader or PC Card Slot

1. Place the CF card into the CF card reader or into the PC card adapter and then into the PC card slot. (→ p. 67)
2. Start Adobe Photoshop LE. (→ p. 89).

Starting Plug-In Module and Loading Images

Downloading Images from the Camera

1. Click the Adobe Photoshop LE [File] menu and select [Import] and [Canon Digital Camera].
Plug-In Module will start.
2. Click the  icon and set the communication settings.
Confirm that [USB Port] and your camera model have been selected and click the [Set] button.
3. Click the [Camera] button.
The images from the camera will display in the Thumbnail Display Area.
4. Select the images you wish to download and click the [Acquire] button.
The images will appear in the Adobe Photoshop LE window.
5. Click the [Quit] button to close Plug-In Module.
To save the loaded images, click the Adobe Photoshop [File] menu and select [Save].
Input a file name and change the file location and format settings if necessary.

Downloading Images Directly from a CF Card

1. Click the Adobe Photoshop LE [File] menu and select [Import] and [Canon Digital Camera].
Plug-In Module will start.
2. Click the [Computer] button.
3. Select the folder containing the images and click [Select].
The images on the CF card will appear in the Thumbnail Display Area.
4. Select the images you wish to download and click the [Acquire] button.
The images will appear in the Adobe Photoshop LE window.
5. Click the [Quit] button to close Plug-In Module.
To save the loaded images, click the Adobe Photoshop LE [File] menu and select [Save As]. Input a file name and change the file location and format settings if necessary.

Guide to the Plug-In Module Window

Preferences Button
Displays and changes various Plug-In Module settings. (→ p. 93)

Camera Settings Button
Use to display and change the camera settings. (→ p. 70)

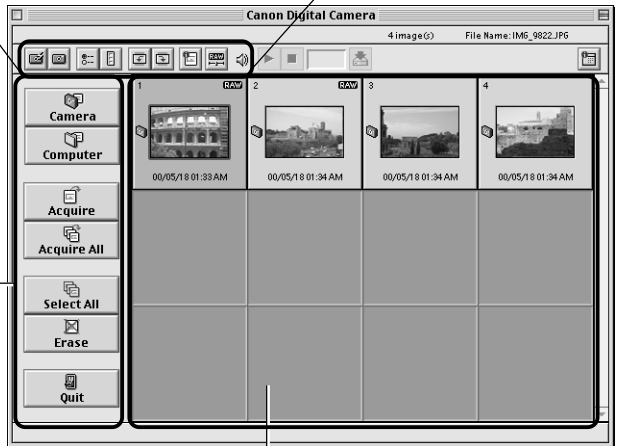
Communication Settings Button
Sets the settings for communicating with the camera.

Display Style Button
Changes the shape of the thumbnail display area.

Rotate 90 Degrees Buttons
Rotates selected image left or right 90 degrees.

Image Information Button
Displays image details

RAW Button
Adjusts the quality at which RAW images are converted. (→ p. 92)



Main Buttons
Use them to perform the main commands such as acquiring images and closing the program.

Thumbnail Display Area
Thumbnails (small versions) of the camera's images display here when it is connected.

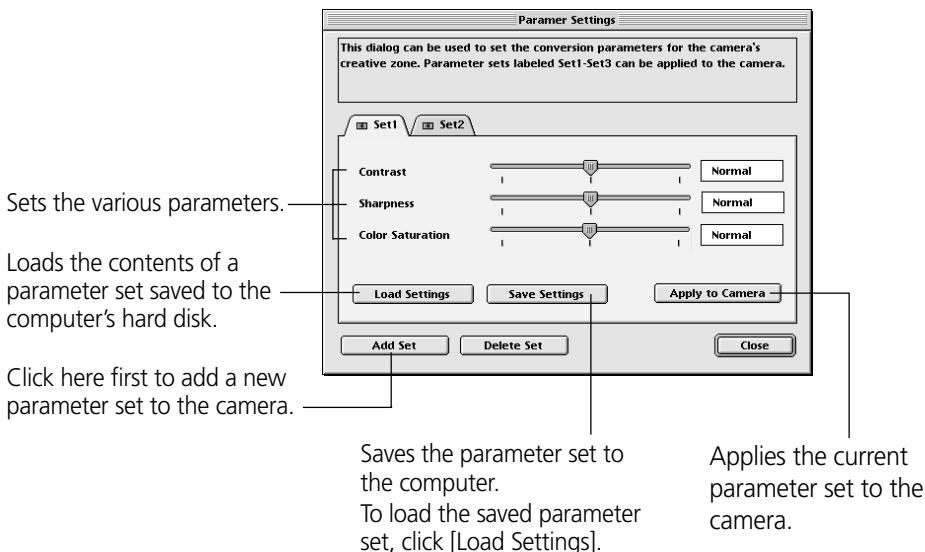
Setting the Parameters

Up to three sets of parameters for loading images can be set in the Plug-In Module using the Parameter Settings dialog in addition to the parameters already set on the camera.

Please see the Camera User's Guide to learn how to select the parameters for the camera that are set with the computer.

1. Click the [Camera Settings] button in the Plug-In Module window.
The Camera Settings dialog will display.
2. Click the [Parameters] button.
The Parameter Settings dialog will display.
3. Click [Add Set].
Click [Add Set] and select the number of the set you wish to add.
4. Set each parameter.
5. Click [Apply to Camera].
The settings will be applied to the camera.

Parameter Settings Dialog



Converting RAW Images

Images shot in the RAW format (hereafter RAW images) are recorded without the image quality being reduced by signal processing or lossy compression. Please refer to your Camera User Guide to learn how to set the camera to shoot in the RAW format.

High-quality RGB images can be obtained from RAW image file data. When a RAW image is converted, you can also choose to adjust its quality settings to obtain an image of a higher caliber than if it had first been loaded into image editing software.

Please note that ImageBrowser or the Plug-In Module are required to load RAW images onto a computer.

Converting RAW Images without Adjusting the Quality

1. Select a RAW image.

Select a RAW image from the Thumbnail Display Area of the Plug-In Module.

2. Click the [Acquire] button.

The image will be converted and sent to Adobe Photoshop LE at 8 bits per RGB. To learn how to change the file transmission format, please see “How to Change the File Transmission Format” on the next page.

Converting RAW Images with Quality Adjustment

1. Select a RAW image.

Select a RAW image from the Thumbnail Display Area of the Plug-In Module.

2. Click the Plug-In Module [RAW] button.

The RAW Image Parameter Settings dialog will display.

3. Select the quality settings and click [OK].

When an image is adjusted, the “RAW” symbol shown on its thumbnail will change from white to green. If multiple RAW images are selected, the parameters are applied only to the first image. When only one RAW image is adjusted, the changes are also reflected in the remaining images in the selection.

4. Click the [Acquire] button.

The RAW image will be converted according to the specified parameters and the data will be sent to Adobe Photoshop LE at 8 bits per RGB channel.

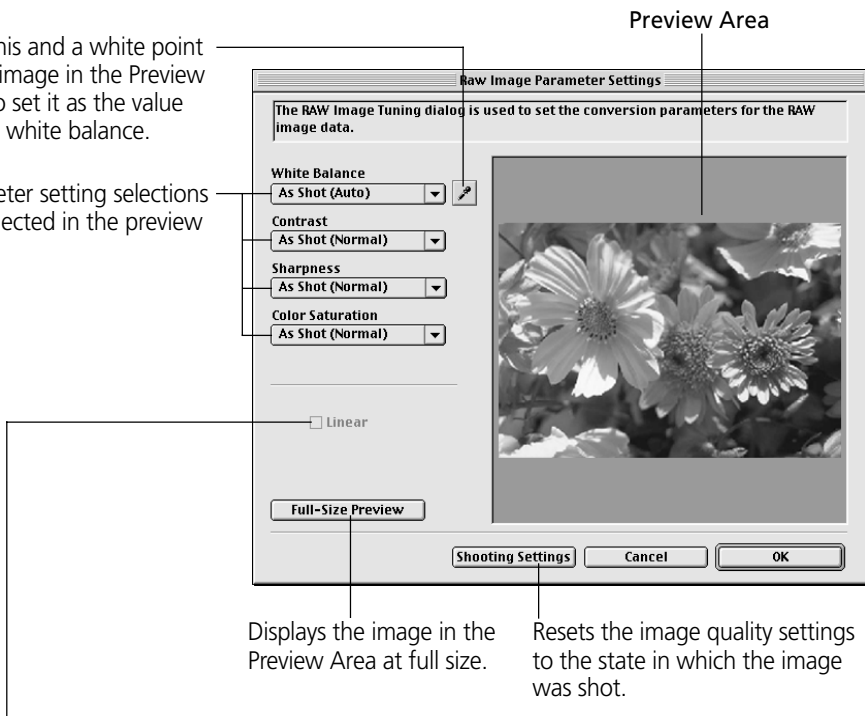
To learn how to change the file transmission format, please see “How to Change the File Transmission Format” on the next page.

- The image quality settings return to the default settings when the Plug-In Module is closed. The settings will also be reset to the defaults if the connection to the camera is broken, or if the Plug-In Module window is refreshed as a result of an image being shot or deleted with the camera while it is connected.

RAW Image Parameter Settings Dialog

Click this and a white point of the image in the Preview Area to set it as the value for the white balance.

Parameter setting selections are reflected in the preview image.



Displays the image in the Preview Area at full size.

Resets the image quality settings to the state in which the image was shot.

Placing a check here applies linear processing to the contrast, sharpness and color saturation.

- The [Linear] option is only enabled when [16 bits per color channel] is selected as the transmission format.

How to Change the File Transmission Format

1. Click [Preferences] button in the Plug-In Module window.
The Preferences dialog will display.
2. Change the transmission format in the [Send RAW image data to the application as] option. and click [OK].

About 16-Bit Transmissions

When [16 bits per color channel] is selected as the transmission option for RAW images, images can be transmitted to the application at 16 bits per RGB channel. Although colors are expressed more vividly with the 16-bit setting than the 8-bit setting, the file size increases dramatically. Moreover, some image editing applications function only partially with files of this format or cannot open them at all.

About the RAW Image Format

The camera uses two standard image file formats: JPEG and RAW. In JPEG mode, the camera processes images after capturing them to produce optimal results. With this format, images are compressed so more can be stored on a single CF card. However, the compression is irreversible, meaning that the original image data cannot be recovered after processing. In contrast, the RAW format records the image data as captured by the camera's CMOS without further processing. RAW images are compressed, but the compression is reversible so that a high-quality image can be obtained from the decompressed file without any loss of image quality. Although a RAW file is larger than an equivalent JPEG file, it is still only approximately one-third the size of an uncompressed file (RGB TIFF), making it relatively compact.* Please see the Camera User's Guide to learn how to set the camera to shoot in RAW mode.

The process of obtaining a high-quality RGB signal from a RAW image is called "conversion." Even if you use ImageBrowser or the Plug-In Module to adjust the image quality of the original image data in some way, the image retains its original high quality. In contrast, other standard uncompressed file formats, such as RGB TIFF, are processed in the camera and further processed by the retouching software, which reduces the image quality.

Please note that the ImageBrowser or the Plug-In Module programs are required to open or adjust RAW images on a computer.

* As measured by standard Canon test conditions.

Troubleshooting the Computer Connection

Double-Check:

1. Is the cable between the camera and computer correctly attached?

Windows Platform (→ p. 10)

Macintosh Platform (→ p. 66)

2. Is the camera's main switch set to [On]?

3. Is the battery charge sufficient?

We suggest that you use the AC adapter to power a camera connected to a computer.

If the above conditions are met, check the following items.

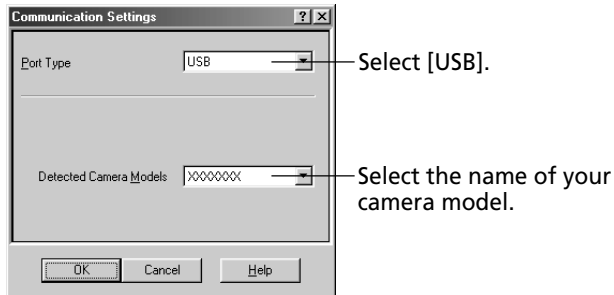
- Have you tried switching the cable to a different port?

If there is more than one port, try switching the cable to another port.

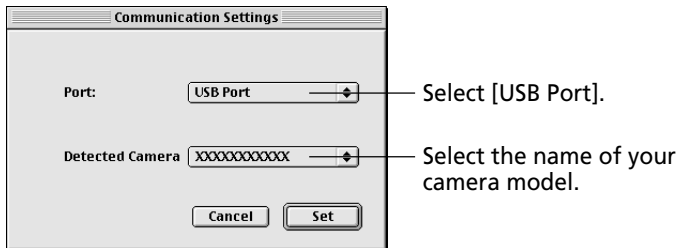
- Are the communication settings appropriate?

If the settings for the port to which the camera is connected are incorrect, the Communication Settings dialog will display.

Windows Platform



Macintosh Platform



If these remedies do not work, please contact the nearest Canon Customer Support Help Desk.

Customer Support

Canon Customer Support

Canon Inc.

30-2 Shimomaruuko 3-chome, Ohta-ku, Tokyo
146-8501, Japan

NORTH AMERICA

Canon U.S.A., Inc.

Canon Customer Care Center
Phone (US): 1-800-828-4040
(Available Mon. - Fri., 9 AM to 8 PM Eastern Time)

Canon Canada Inc.

Phone (Canada): 1-800-OK-CANON (1-800-652-2666)
(24 hours/day, 7 days/week)

EUROPE

Europe, Africa & Middle East

Canon Europa N.V.

PO Box 2262, 1180 EG Amstelveen, The Netherlands

Canon (UK) Ltd.

Helpdesk
Tel No.: 08705 143 723 (Calls may be recorded.)
Fax No.: 08705 143 340

Canon France S.A.

Hotline : 01.41.99.70.70
Tél : 01.41.99.77.77 Télécopie : 01.41.99.79.51

Canon Photo Vidéo France S.A.

Support Client: 01.41.30.15.18
Fax: 01.41.30.15.98

Canon Euro-Photo GmbH

Customer-Support: (02154) 495-482 or 483
Telefax: (02154) 495-489

Canon Italia S.p.A.

Pronto Canon : 02 8249 2000

Canon Belgium N.V. / S.A.

Helpdesk: 0900-10627
Tel.: (02) 722.04.11 Fax: (02) 721.32.74

Canon Luxembourg S.A.

Tel.: (352) 48 47 961 Fax: (352) 48 47 96232

Canon Nederland N.V.

Helpdesk: 023 - 5 681 681
Tel.: 023 - 5 670 123 Fax: 023 - 5 670 124

Canon Danmark A/S

Phone: +45 44882400
e-mail: helpdesk@canon.dk

Canon España S.A.

Help Desk: 906 301 255
Fax: (91) 411 76 65
E-mail: helpdesk1@btlink.net

Canon Norge as

Tlf. 22 62 93 21 Faks: 22 62 06 15
E-mail: helpdesk@canon.no

Finland

Canon OY

Puhelin: 010 54420 Fax: 010 544 4571
Help Desk: 0600 0 22606 (14,80 mk/min+pvm)
Help Desk: 0600 0 22666 (enint. 40mk/puhelu+pvm)
Sähköposti: helpdesk@canon.fi

Canon (Schweiz) AG

Tel. 01-835-6161, Fax 01-835-6526
Hotline 0900 57 55 20

Canon Svenska AB

Stensättravägen 13, S-127 88, Skärholmen, Sweden

Austria

Canon GmbH

Oberlaaerstraße 233 A-1100 Vienna
Tel: 01 680 88-0 Fax: 01 680 88-308

OCEANIA

Canon Australia Pty. Ltd.

Info-Line: (02) 9805 2864

Canon New Zealand Ltd.

Info-Line: 0900-522666

ASIA

Canon Singapore Pte. Ltd.

79 Anson Road, #09-01 / 06, Singapore 079906
Phone: (65) 532 4400 Fax: (65) 221 7577

Canon Hongkong Co., Ltd.

9/F, The Hong Kong Club Building, 3A Chater Road,
Central, Hong Kong
Phone: 852-2739-0802 Fax: 852-2369-7701

Canon Marketing Services

No.1 Jalan Kilang Timor, #09-00, Pacific Tech Centre,
Singapore 159303
Phone: (65) 799 8888 Fax: (65) 273 3317

Canon Marketing (Malaysia) Sdn. Bhd.

Wisma General Lumber, Block D, Peremba Square,
Saujana Resort, Section U2, 40150,
Shah Alam, Selangor Darul Ehsan, Malaysia
Phone: (60) 3 744 6000, (60) 3 745 0055
Fax: (60) 3 745 0505

Canon Marketing (Thailand) Co., Ltd.

10th Floor, Bangkok City Tower,
179/34-45 South Sathorn Road,
Bangkok 10120, Thailand
Phone: (662) 344 9999 Fax: (662) 344 9910

Canon Marketing (Hongkong) Co., Ltd.

10/F, Mirror Tower, 61 Mody Road, Tsimshtsui East
Kowloon HongKong
Phone: 852-2170-2828 Fax: 852-2723-9684

Adobe Customer Support

Adobe Systems Inc. technical support information is available in the PDF file format on the supplied CD-ROM.

PDF File Location and Opening Instructions

Place the Adobe Photoshop LE CD-ROM in the drive and double-click the [My Computer] icon on the Windows desktop, followed by the [Photosle] CD-ROM icon. The window will show folders with language names. Double-click the appropriate language folder and the [Support.pdf] file within it.

- * To read PDF files, Adobe Acrobat Reader must already be installed on your computer. An installer for this program is on the Adobe Photoshop LE CD-ROM within each language folder in a folder labeled [Acroread].

Disclaimer

- While every effort has been made to ensure that the information contained in this guide is accurate and complete, no liability can be accepted for any errors or omissions. Canon Inc. reserves the right to change the specifications of the hardware and software described herein at any time without prior notice.
- No part of this guide may be reproduced, transmitted, transcribed, stored in a retrieval system, or translated into any language in any form, by any means, without the prior written permission of Canon Inc.
- Canon Inc. makes no warranties for damages resulting from corrupted or lost data due to a mistaken operation or malfunction of the camera, the software, the CompactFlash™ cards (CF cards), personal computers, peripheral devices, or use of non-Canon CF cards.

Trademark Acknowledgments

- Canon, EOS and PowerShot are trademarks of Canon Inc.
- Adobe, Adobe PhotoDeluxe and Photoshop are trademarks of Adobe Systems Incorporated.
- CompactFlash is a trademark of SanDisk Corporation.
- IBM is a registered trademark of International Business Machines Corporation.
- iBook and iMac are trademarks of Apple Computer, Inc.
- Macintosh, PowerBook, Power Macintosh and QuickTime are trademarks of Apple Computer Inc., registered in the United States and other countries.
- Microsoft, Windows and Windows NT are either registered trademarks or trademarks of Microsoft Corporation in the United States and/or other countries.
- Other names and products not mentioned above may be registered trademarks or trademarks of their respective companies.

Canon