



The following manuals are supplied with your camera. Please refer to them as need be.

Contents of This Guide	Reference Guides
Included accessories and separately sold equipment information.	System Map
1. Install the batteries and the memory card.	This guide Quick Start Guide
2. Shoot images with the camera.	Camera User Guide
3. Play back the images.	Camera User Guide
4. Erase any unwanted images.	Camera User Guide
Learn the names of camera components.	Camera User Guide
5. Print the images.	Direct Print User Guide
6. Install the software.	Printer User Guide (Supplied with a printer)
Connect the camera to a computer.	Camera User Guide Software Starter Guide
7. Download the images to a computer.	ZoomBrowser EX Software User Guide ImageBrowser Software User Guide
What you can do with the software.	These PDF format guides are available on the Canon website. Please download them from the following URL: http://web.canon.jp/Imaging/Information-e.html
The various ways of using the software.	

1 Preparing the Camera → Camera User Guide

A. Open the battery cover.

B. Insert the batteries as shown.

C. Close the battery cover.

D. Open the memory card slot cover.

E. With the label side up, insert the memory card into the slot.
Insert the memory card all the way until it clicks. Slide the memory card slot cover closed.
To remove the memory card
Push the memory card until the card clicks and then release it.

2 Shooting → Camera User Guide

A. Turn the mode lever to **SH (Shooting) while pressing the release button.**
The Power/Mode lamp lights orange.

B. Turn the mode dial to **AUTO.**

C. If you wish to use the LCD monitor, open it.

D. Set the date and time. The first time you turn on the camera, you must set the date and time.

- Use the ◀ or ▶ button on the omni selector to select the items that you want to set, and then use the ▲ or ▼ button on the omni selector to change the value.
- Check that the date and time shown are correct, and then press the SET button.

E. Aim the camera at the subject and adjust the zoom to achieve the desired composition. (See "Zoom" in the "Quick Reference" section.)

F. Focus and shoot.

- Press the shutter button half-way to focus. The camera focuses and beeps twice.
- Press the shutter button all the way to shoot.

3 Playback → Camera User Guide

A. Turn the mode lever to **PL (Playback) while pressing the release button.**
- If you wish to use the LCD monitor, open it.
- The power/mode lamp lights green.

B. Play back the images.
Use the ◀ or ▶ button to display the image you wish to see.

4 Erasing an Image → Camera User Guide

A. Use the ◀ or ▶ button on the omni selector to select the image that you want to erase (1) and press the SET button (2).

B. When the confirmation screen appears, check that [Erase] is selected and press the SET button.
Select [Cancel] using the ◀ or ▶ button on the omni selector to cancel without erasing.

Quick Reference → Camera User Guide

Zoom

Wide Angle Telephoto

- Wide Angle**
Zoom out from the subject.
- Telephoto**
Zoom in on the subject.

* The zoom can be adjusted from 36 to 432 mm (35 mm film equivalent).

Flash

When the blinks red on the LCD monitor or viewfinder, or when you wish to use the flash, raise it manually. Once the flash is raised, press the button to cycle between flash modes. Some flash modes are not available with certain shooting mode.

When the red-eye reduction function is on	When the red-eye reduction function is off
Auto with red-eye reduction	Auto
Flash on with red-eye reduction	Flash on
Flash off (when flash is lowered.)	Flash off (when flash is lowered.)

Flash Range: 70 cm - 5.2 m (2.3 - 17.1 ft.) (wide-angle)
70 cm - 4.0 m (2.3 - 13.1 ft.) (telephoto)

* Red-eye reduction: This feature reduces the effect of light reflecting back from the eyes and making them appear red.

Macro Shooting

Press the button to display the on the LCD monitor. Use this mode to shoot close-ups of flowers or small objects.

* Recordable Area at Minimum Shooting Range <Shooting Distance>
At max. wide angle end: approx. 118 x 87 mm (4.6 x 3.4 in.)
<From the front of lens: 10 cm (3.9 in.)>

Continuous Shooting/Self-timer

Press the button to cycle through the settings. (Some settings are not available with certain shooting modes.)

- Single image shooting
- Continuous shooting
- Self-timer (10 sec.) / Self-timer (2 sec.) / Custom

Changing the Displayed Information

Press the **DISP.** button to switch the displayed information, as follows.

Shooting mode:	Playback Mode:
LCD monitor - On (no information)	Standard Information view
LCD monitor - On (information view)	Detailed Information view
LCD viewfinder - On (no information)	No Information
LCD viewfinder - On (information view)	

Switching Between Shooting/Playback

Shooting:
Turn the mode lever to **SH** while pressing the release button.

Playback:
Turn the mode lever to **PL** while pressing the release button.

Shooting Modes

- AUTO**: Shoots with settings selected by the camera.
- Portrait**: The background is blurred and the subject is in clear focus.
- Landscape**: For shooting landscape scenes.
- Night Scene**: For photographing human subjects against the backdrop of an evening sky or a night scene.
- SCN : Special Scene**: Select from six scene modes to shoot with the most appropriate settings for the scene.
- My Colors**: Use these modes to change image colors and then shoot.
- Stitch Assist**: Images shot in Stitch Assist mode can be merged together on a computer to make a single panoramic image.
- Movie**: For shooting movies.

In addition, there are functions that can be set in each shooting mode. For details refer to "Functions Available in Each Shooting Mode" at the end of the Camera User Guide.

5 Printing with a Direct Print Compatible Printer → Direct Print User Guide

A. Connect the camera to the printer and turn on the printer's power.

B. appears* in the upper-left corner of the camera's LCD monitor, indicating that the printer is ready to print.
* The displayed icon may vary depending on the printer model.

C. Select the image that you want to print with the ◀ or ▶ button on the omni selector and press the button.
The button will flash blue and printing will start.

Please turn over

6 Preparing to Download Images to a Computer → Camera User Guide, Software Starter Guide

Never connect the camera to the computer before the software is installed.

List of Things to Prepare

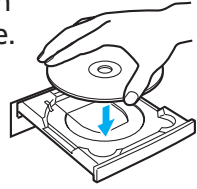
- Camera and Computer
- Canon Digital Camera Solution Disk provided with the camera
- Interface Cable (use the cable provided with the camera)

A. Confirm that the computer meets the system requirements.

See the *Camera User Guide*.

B. Install the software.

- a. Place the Canon Digital Camera Solution Disk into your computer's CD-ROM drive.



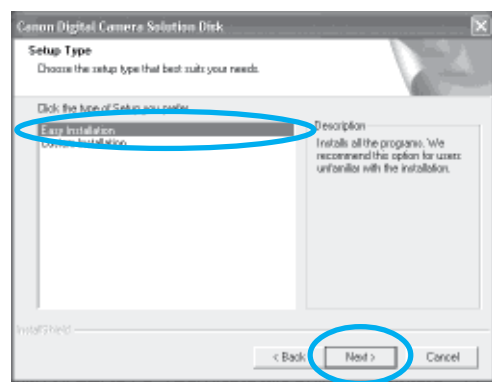
Macintosh

- Double-click the [Canon Digital Camera Installer] icon in the CD-ROM window.

- b. Click the Digital Camera Software [Install] button and click [Next].

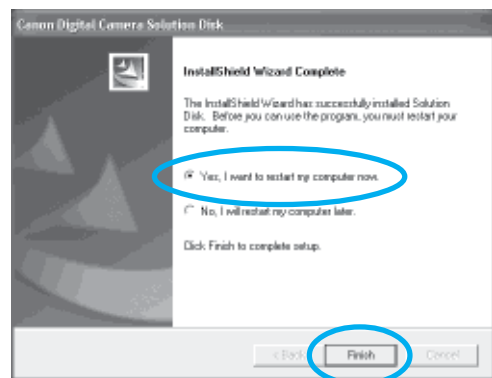


- c. Select [Easy Installation] and click [Next].



Proceed with the installation while reviewing installation settings.

- d. When the installation is complete, select [Yes, I want to restart my computer now.] as shown in the screen below, and click [Finish].



Macintosh

Once the installation is complete, click [Quit].

- e. Remove the disk from the CD-ROM drive after restarting.

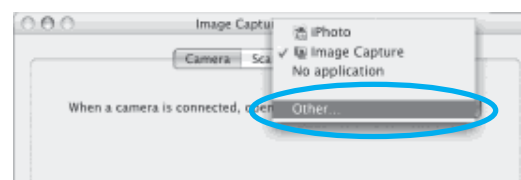
Macintosh

Set the ImageBrowser auto start settings before you connect the camera to the computer for the first time.

ImageBrowser Auto Start Settings

OS X (v10.2/v10.3)

1. Start Image Capture, click the [Image Capture] menu and select [Preferences].
2. In the next menu, click the [When a camera is connected, open:] list box and select [Other].

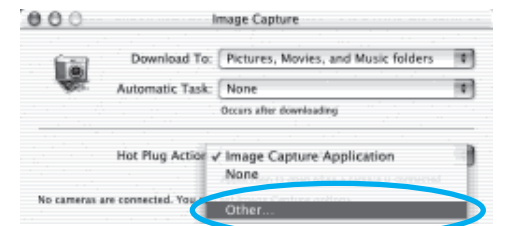


The window will appear slightly different in v10.2.

3. Select [CameraWindow] in the program selection window. CameraWindow is generally installed into the folder opened by selecting the [Applications], [Canon Utilities] and [CameraWindow] folders.
4. Click [OK] and then close Image Capture.

OS X (v10.1)

1. Start Image Capture and select [Other] from the [Hot Plug Action] list box.



2. Select [CameraWindow] in the program selection window.

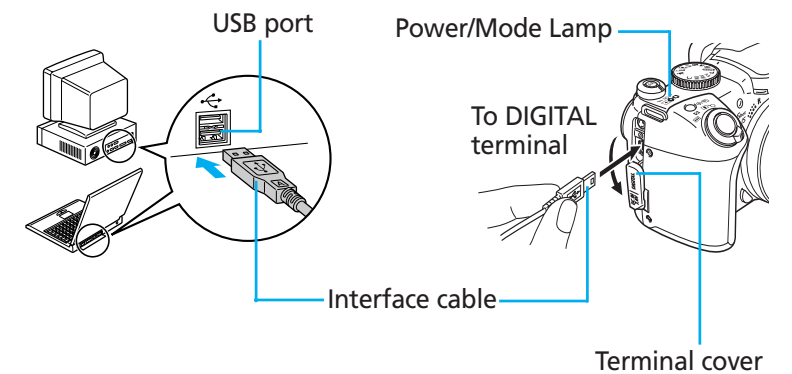
CameraWindow is generally installed into the folder opened by selecting the [Applications], [Canon Utilities] and [CameraWindow] folders.

3. Close Image Capture.

C. Connect the camera to the computer.

- a. Connect the supplied interface cable to the computer's USB port and the camera's DIGITAL terminal.

- Slip a fingernail under the bottom edge of the camera's DIGITAL terminal cover, lift it up and plug the interface cable in all the way.
- Treat the connector area with great care while you attach and remove the interface cable.
- When communication between the computer and camera is established, the LCD monitor or viewfinder turns off and the power/mode lamp lights yellow.



Windows

If the Digital Signature Not Found window appears, click [Yes].

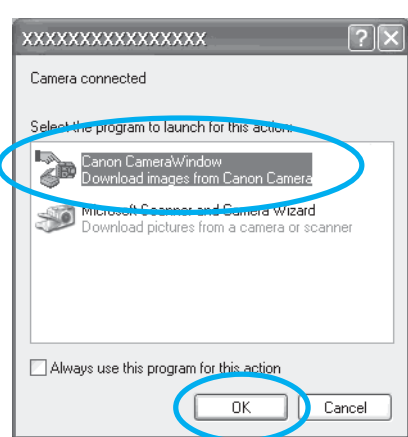
The USB driver will automatically finish installing onto the computer when you attach the camera and open a connection.

7 Downloading Images to a Computer Windows

→ Camera User Guide, Software Starter Guide

A dialog allowing you to set the default settings will display when you attach the camera and open a connection.

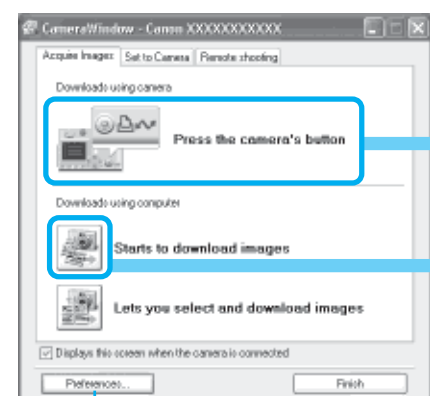
A. Select [Canon CameraWindow] and click [OK] (first time only).



If the window shown above does not appear, click the [Start] menu, then select [Programs] or [All Programs], followed by [Canon Utilities], [CameraWindow] and [CameraWindow].

B. Download the images.

Download the images using the camera or the computer. By default, the downloaded images are saved into the [My Pictures] folder.

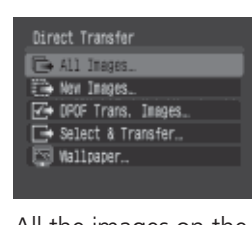


You can set the type of image to download and the destination folder by clicking [Preferences].

The downloaded images will appear as thumbnails (tiny versions) in the Main Window of ZoomBrowser EX. By default, the downloaded images are saved in separate folders according to the date on which they were shot.

Downloading Images Using Camera Operations (Direct Transfer)

- a. Confirm that the button lights blue.
- b. When the Direct Transfer menu appears in the camera's LCD monitor, use the ▲ or ▼ button to select [All Images] and press the button.



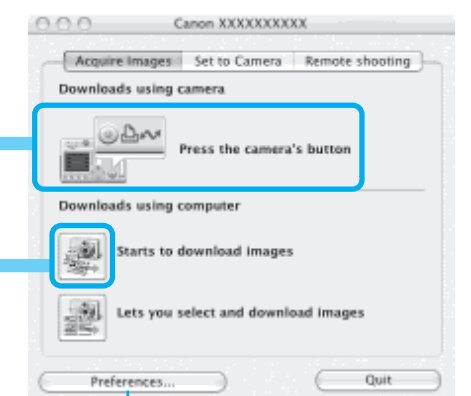
All the images on the camera's memory card will download. To selectively download images, select [Select & Transfer].

Downloading Images Using Computer Operations

- a. Click [Starts to download images].
- By default, all the images that have yet to be downloaded will download.

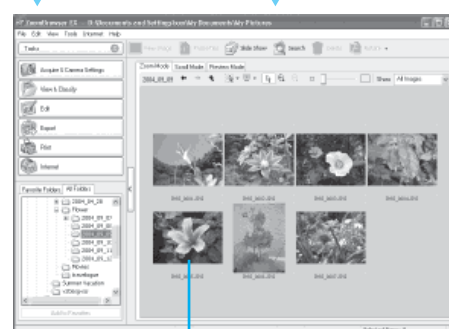
A. Download the images.

Download the images using the camera or the computer. By default, the downloaded images are saved into the [Pictures] folder.

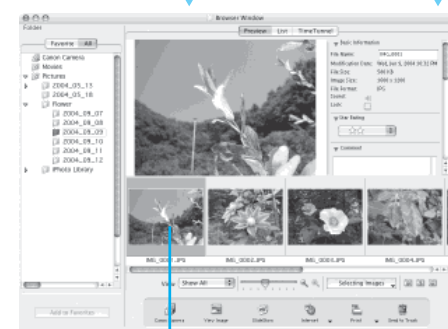


You can set the type of image to download and the destination folder by clicking [Preferences].

The downloaded images will appear as thumbnails (tiny versions) in the Browser Window of ImageBrowser. By default, the downloaded images are saved in separate folders according to the date on which they were shot.



Thumbnail



Thumbnail

Image download is complete.

Getting the Most out of the Software → Software Starter Guide, ZoomBrowser EX / ImageBrowser Software User Guide

What you can do with ZoomBrowser EX (Windows) / ImageBrowser (Macintosh)

Downloading Images to a Computer

You can easily download images saved in the camera to a computer.

Checking Images

You can magnify images and check the information on them (the shooting date and time, the shooting settings, etc.)

Sending Images by E-mail

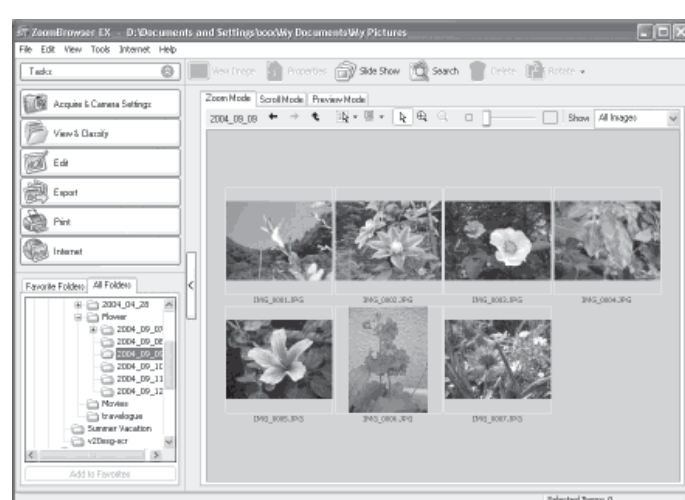
You can start your e-mail program from ZoomBrowser EX (Windows) / ImageBrowser (Macintosh) and attach images to e-mail messages that you send.

Editing Movies

You can create and edit movies: link movies and stills that have been downloaded to your computer, add background music, superimpose titles and other text, and apply various effects to the movies.

Using the My Camera Settings

Your favorite images and sounds can be registered as startup-up images and sounds with My Camera Settings.

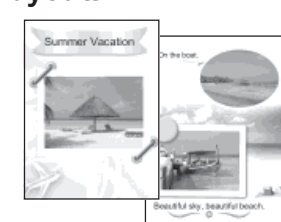


What you can do with other software

You can use this software in even more advanced ways by linking it with other software.

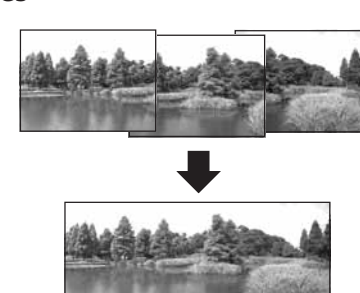
Printing Images with Different Layouts

With PhotoRecord (Windows)/ ImageBrowser (Macintosh), you can lay out images as desired and then print them.



Stitching Panoramic Images

With PhotoStitch, you can connect or "stitch" multiple images together into a seamless panoramic view.



A Guide to the Manuals

Basic Methods: Software Starter Guide

Advanced Methods: PDF Manuals

The manuals in PDF format shown below are available on the Canon website. Please download them from the following URL:

- <http://web.canon.jp/Imaging/information-e.html>
- ZoomBrowser EX Software User Guide (Windows)
- ImageBrowser Software User Guide (Macintosh)

Viewing the PDF Manuals

The software application Adobe Reader or Adobe Acrobat Reader is required to view the PDF manuals. If one of these applications is not already installed on your computer, download it from the following website.

<http://www.adobe.com/products/acrobat/readstep2.html>