

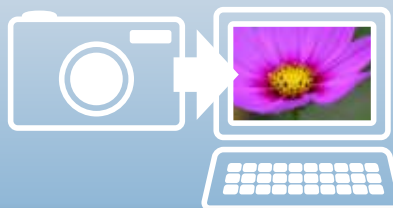
# Software Guide

## for Macintosh

- ImageBrowser
- PhotoStitch

### Special Features

#### Transfer Images and Movies



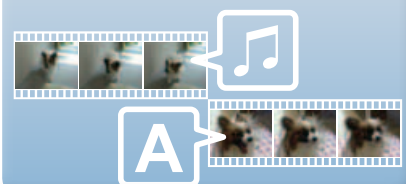
#### Insert Text



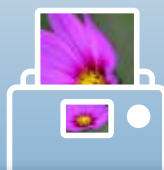
#### Save Still Images From Movies



#### Edit Movies



#### Print Images



#### Attach Images to Email



Plus many other useful features



# About this Manual

## Notation Conventions

The contents of this manual are classified according to the following symbols.

### ! IMPORTANT

- The “Important” sections contain operating precautions or important topics. Ensure that you read them.

### 💡 HINT

- The “Hint” sections contain procedural suggestions and tips for your convenience. Read them as necessary.

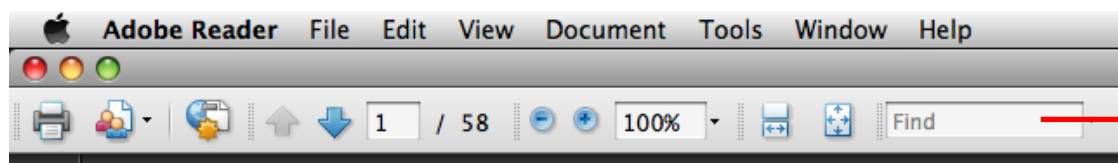
## Operating Environment

- This manual uses Mac OS X v10.5 screen shots and procedures in the explanations. The screen shots and procedures may appear slightly different if you are using another version of Mac OS.
- The displayed screens and procedures may also differ slightly from the examples depending upon the camera or printer model in use.
- The explanations in this guide are based on the premise that a Canon compact digital camera will be used with the software.
- Some functions may not be available depending on the camera model.

## Word Searches

This document is provided as an Adobe Reader document. Use Adobe Reader’s Search functions to find specific words or phrases that you recall but cannot find. To access this function, in Adobe Reader click the [Edit] menu and select the [Search] option.

If you are using Adobe Reader 8 or later, you can also perform searches with the [Find] function right on the toolbar.



Input search text here

## Precautions for Connecting the Camera to the Computer

- When connecting the camera to the computer with an interface cable, make sure to connect the cable directly to the computer's USB port. The connection may not operate correctly if you attach the camera to the computer via a USB hub.
- The connection may not operate correctly if you are using other USB devices, excluding USB mice or keyboards, at the same time as the camera. If this occurs, disconnect the other devices from the computer and try reconnecting the camera.
- Do not connect two or more cameras at the same time to the same computer. The connections may not operate correctly.
- Do not allow the computer to go into sleep (standby) mode while a camera is connected via the USB interface cable. If this does happen, do not disconnect the interface cable. Try to awaken the computer with the camera in the connected state. Some computers will not awaken properly if you disconnect the camera while they are in sleep (standby) mode. Please refer to your computer manual for instructions regarding the sleep (standby) mode.
- Do not disconnect the camera from the computer if CameraWindow is displayed on the screen.

### **IMPORTANT**

- **You are recommended to use an AC adapter (sold separately) when connecting to a computer. Ensure that you use fully charged batteries if you cannot use an AC adapter.**
- **See the *Camera User Guide* for procedures on connecting the camera to the computer.**

# Table of Contents

About this Manual .....	2
Precautions for Connecting the Camera to the Computer .....	3
<b>Things to Remember</b> .....	<b>6</b>
<b>The Two ImageBrowser Windows</b> .....	<b>6</b>
Windows That Communicate With the Camera and Manage Images .....	6
<b>Browser Window</b> .....	<b>7</b>
How to Display the Browser Window .....	7
Names of the Browser Window Parts .....	7
<b>How to Perform Tasks</b> .....	<b>8</b>
Selecting and Using Functions .....	8
<b>Mastering the Basics</b> .....	<b>9</b>
<b>Transferring Images</b> .....	<b>9</b>
Transferring Images by Connecting the Camera to a Computer .....	9
<b>Printing</b> .....	<b>12</b>
Printing a Single Image on a Single Page .....	12
Index Print .....	14
<b>How to Use CameraWindow</b> .....	<b>16</b>
First Menu Screen to Open .....	16
Image Transfer Screen .....	17
Organize Images Screen .....	18
<b>How to Use the Browser Window</b> .....	<b>19</b>
Browser Window .....	19
Display Modes .....	20
Display Control Panel .....	20
Browser Area Tasks .....	21
File Information Window .....	22
Viewer (View Image) Window .....	23
<b>More Advanced Techniques</b> .....	<b>24</b>
<b>Editing Images</b> .....	<b>24</b>
Trimming–Cropping a Portion of an Image .....	24
Color/Brightness Adjustment .....	24
Red Eye Correction .....	25
Inserting Text .....	25
Correcting Levels .....	26
Correcting Tone Curves .....	26
Adjusting Sharpness–Emphasizing Outlines .....	27
Auto Adjustment .....	27
Using Other Editing Software .....	28
Attaching Sounds .....	29
Creating Panoramic Images–PhotoStitch .....	30
Editing Movies .....	31
Converting RAW Images–Digital Photo Professional .....	32

**Exporting** ..... 34

- Changing Image (Stills) Sizes and Types ..... 34
- Exporting Shooting Information ..... 34
- Creating Computer Screen Saver Images ..... 35
- Creating Computer Wallpaper Images ..... 35
- Extracting Stills from Movies ..... 36

**Uploading Movies to YouTube** ..... 37

- Uploading to YouTube ..... 37

**Email** ..... 38

- Attaching Images to Email ..... 38

**Slide Shows** ..... 39

- Viewing Images in Slide Shows ..... 39

**Image Management** ..... 40

- Changing File Names in Batches ..... 40
- Sorting Images into Folders by Shooting Date ..... 40
- Classifying Images Into Star Ratings Folders ..... 41

**Configuring Image Information Settings** ..... 42

- Setting Star Ratings ..... 42
- Inserting Comments ..... 42
- Assigning Keywords ..... 43

**Searching, Filtering and Sorting Images** ..... 44

- Searching Images ..... 44
- Filtering Images ..... 45
- Sorting Images ..... 45

**Comparing Images** ..... 46

- Comparing Multiple Images ..... 46

**My Camera Settings** ..... 47

- Changing the Shutter Sound and Start-Up Image ..... 47

**Transferring Images** ..... 49

- Transferring Images to a Camera ..... 49

**CANON iMAGE GATEWAY** ..... 50

- About CANON iMAGE GATEWAY (for U.S.A. customers only) ..... 50
- Registering ..... 50
- Available Services ..... 51

**Preference Settings** ..... 52

- Customizing ImageBrowser ..... 52

**Appendices** ..... 53

- List of Available Functions ..... 53
- Supported Image Types ..... 55
- Uninstalling the Software ..... 56
- Memory Card Folder Structure ..... 57
- Troubleshooting ..... 58

# The Two ImageBrowser Windows

## Windows That Communicate With the Camera and Manage Images

The following two windows are the main ones used for ImageBrowser procedures.



**Transfer window, which opens when a camera is connected.  
CameraWindow**



You can transfer all or a selection of images from the connected camera.

CameraWindow closes and the screen changes after the images are transferred from the camera.



**Organizing window for transferred images.  
Browser Window**



You can view, edit and print the images in the computer.



Click this icon in the Dock.



Double-click an image.



The Viewer Window that appears when you view an image.

**HINT**

**Use the Help Function**

The (Help) button or Help menu is available in most CameraWindow and ImageBrowser windows. It is there for when you are unsure how to proceed.

# Browser Window

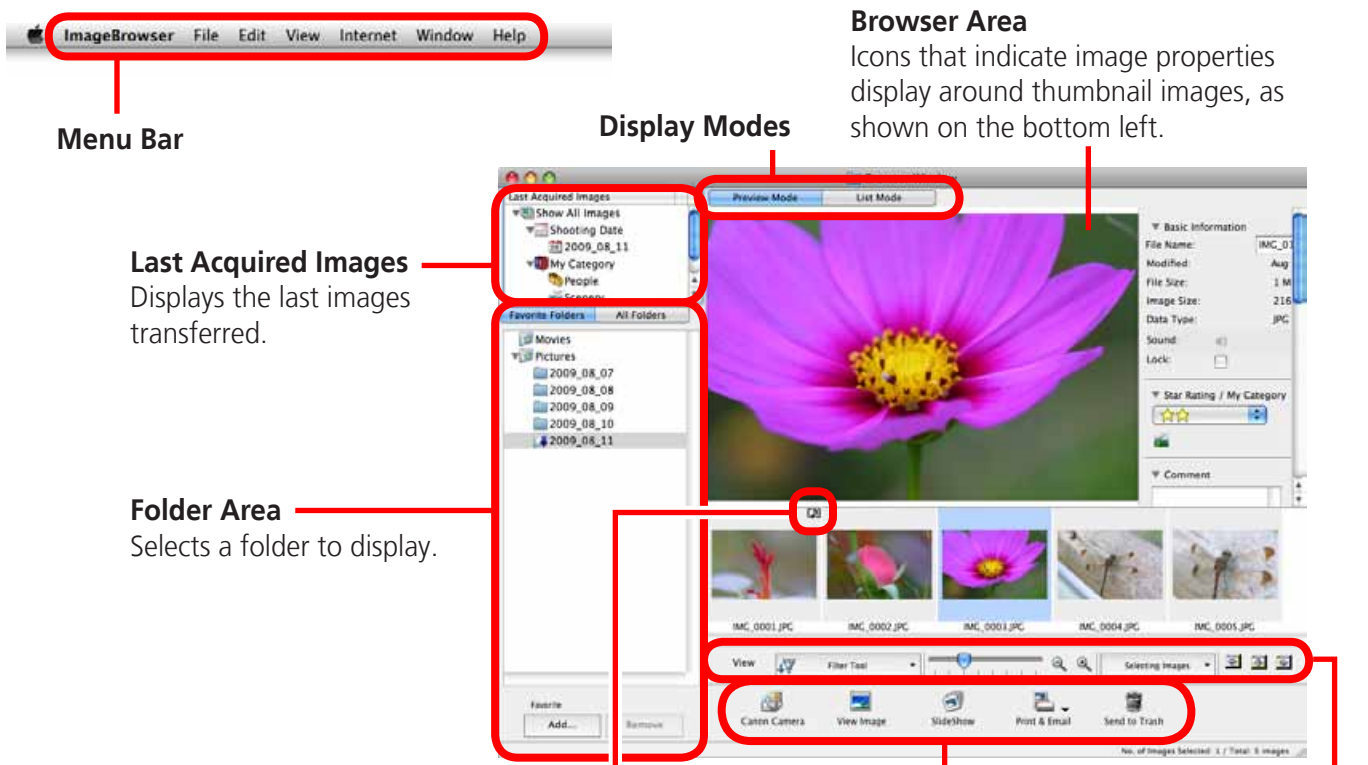
## How to Display the Browser Window

Browser Window will appear after the camera images are transferred and CameraWindow closes. You can also display it by clicking the ImageBrowser icon in the Dock (the bar at the bottom of the desktop).

- If the ImageBrowser icon is not displayed in the Dock, double-click the [Applications] folder, followed by the [Canon Utilities] folder, [ImageBrowser] folder and the [ImageBrowser] icon.



## Names of the Browser Window Parts



### Properties Icon (Displays image properties)

- : Image recorded using the camera's Stitch Assist mode
- : RAW image
- : Movie
- : Image with sound memo attached
- : Protected image
- : Image recorded using the camera's AEB function
- : Rotated image (rotated in display only)

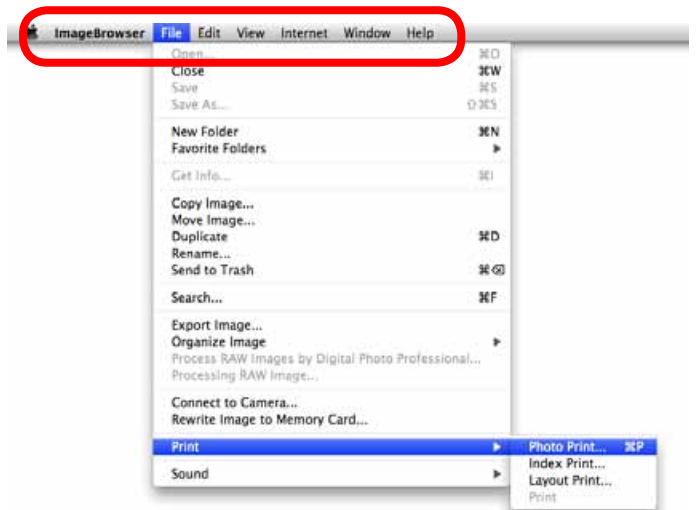
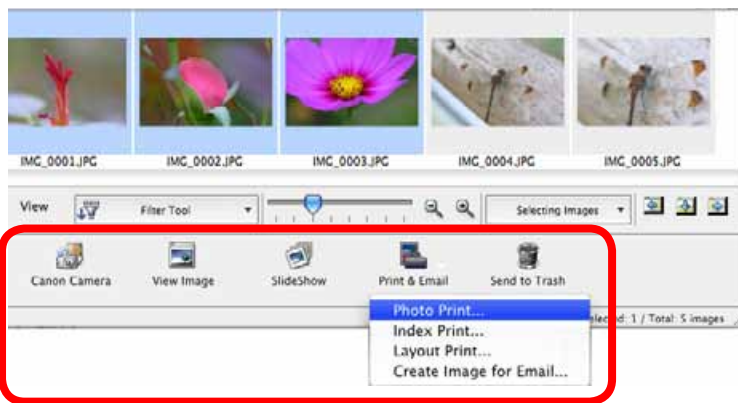


# How to Perform Tasks

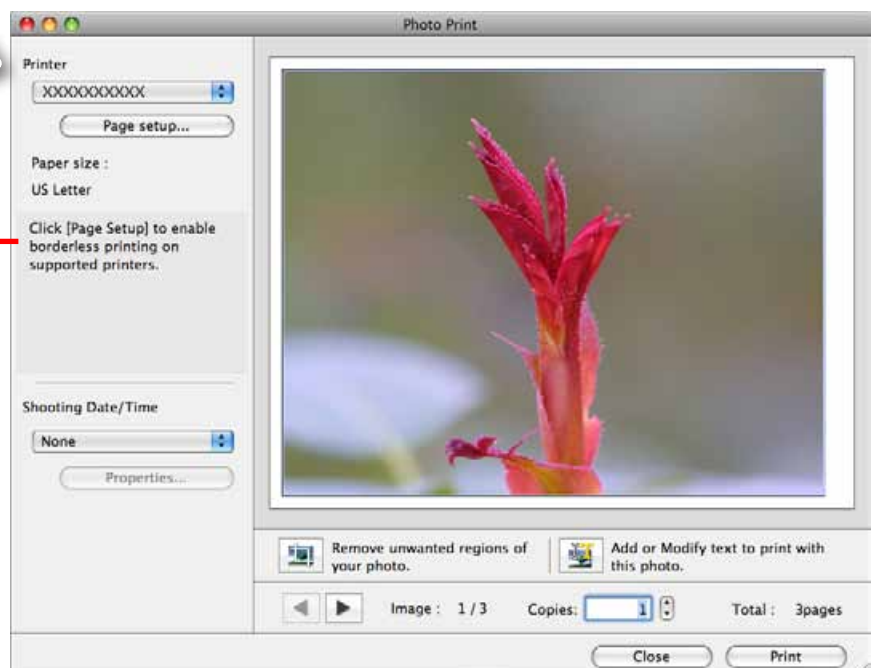
## Selecting and Using Functions

Many ImageBrowser functions can be accessed by selecting them from the Control Panel and following the instructions in the guidance section of the new window. For further details on the functions, refer to ["List of Available Functions"](#) in the appendix.

**1** Select a function from the Control Panel or a menu.



**2** Follow the instructions to perform the task.





# Transferring Images

## Transferring Images by Connecting the Camera to a Computer

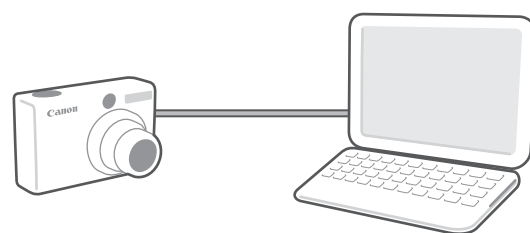
Transfer the camera images to the computer.



### ! IMPORTANT

- The instructions in this software manual assume that you have correctly installed the software. See the *Camera User Guide* for software installation procedures.
- For details on how to connect the camera to a computer, refer to the *Camera User Guide*. Please also refer to [“Precautions for Connecting the Camera to the Computer”](#).
- If CameraWindow fails to open when you connect the camera, click the [CameraWindow] icon in the Dock (the bar at the bottom of the desktop).

**1** Connect the camera to the computer with the supplied interface cable.

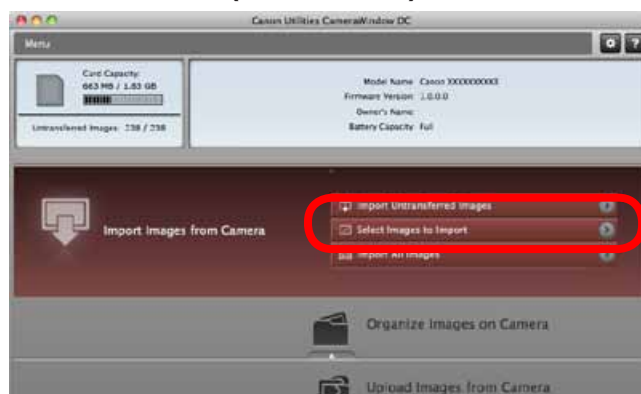


**2** Turn on the camera power, set it to playback mode and prepare it to communicate with the computer.

**3** Click [Import Images from Camera] and then click [Import Untransferred Images].


Only images that have not yet been transferred will start to transfer.

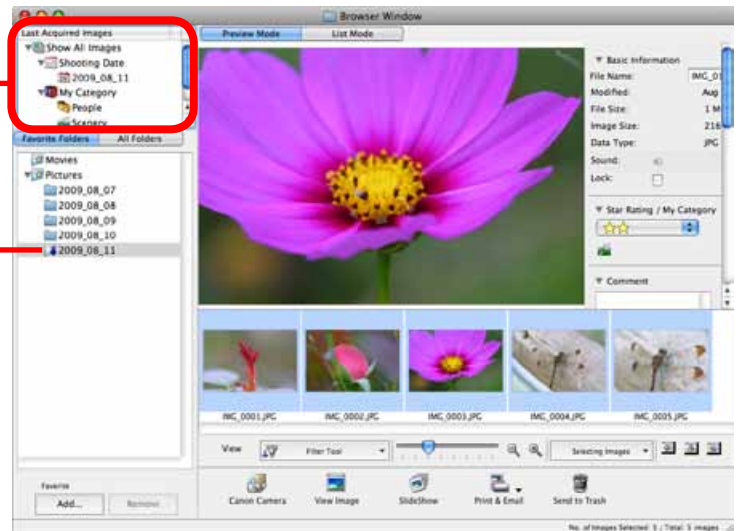
CameraWindow (Menu Screen)



After you click [OK] in the dialog that indicates the transfer is complete and close the CameraWindow screen, the transferred images will display in the Browser Window.

You can select the newly transferred images by their shooting dates or My Category (select models only) classification.


 : Folders containing newly acquired images

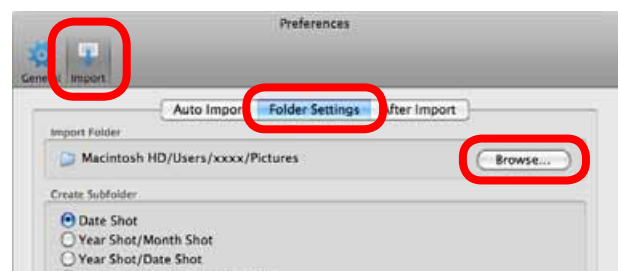


- Images from memory cards with large numbers of images (more than 1,000) may not transfer correctly. If this happens, please use a memory card reader to transfer. For details on transferring images from a memory card reader, refer to [“Transferring Images Using a Memory Card Reader”](#).
- Movie files take time to transfer since the files are large.

 **HINT**

**Changing the Transfer Destination Folder**

The default settings save transferred images into the [Pictures] folder. To change the destination folder, click the  button shown on the right in Step 3 as described on the previous page, then click the [Import] button. In [Folder Settings], click [Browse] to complete settings in the screen currently displayed.



**HINT**

**Select Images to Import**

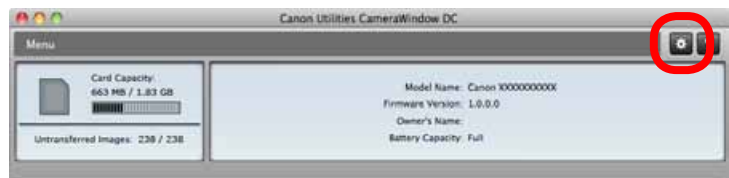
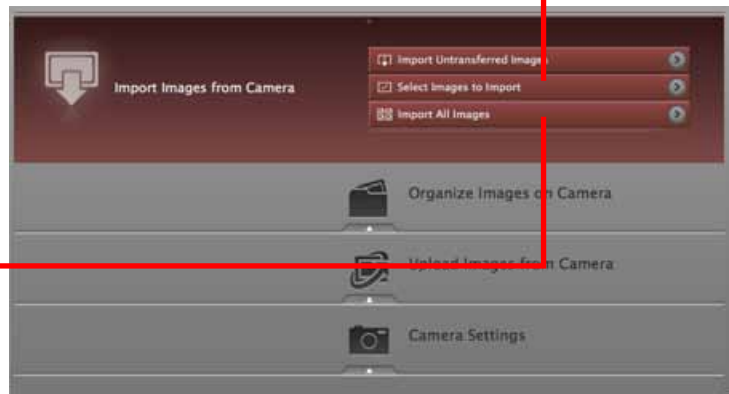
To transfer only a selection of images from the camera, click [Import Images from Camera] in CameraWindow (menu screen), then select images in the image transfer screen, and click the  (Import) button. For details, refer to “Image Transfer Screen”.

**Import All Images**

To transfer all images on the camera, click [Import Images from Camera] in CameraWindow (menu screen) then, [Import All Images].

**Automatically Transferring Images on ImageBrowser Start-Up**

To automatically transfer images when CameraWindow starts up, click the button shown on the right in CameraWindow (menu screen), then click the [Import] button, and [Auto Import]. Add a checkmark to [Start importing images automatically when this software is launched.].



**Transferring Images Using a Memory Card Reader**

ImageBrowser will start when you insert a memory card into the memory card reader, and display the following window. Use this window to perform the transferring procedures.



Transfers all images.

Allows you to select and transfer images.

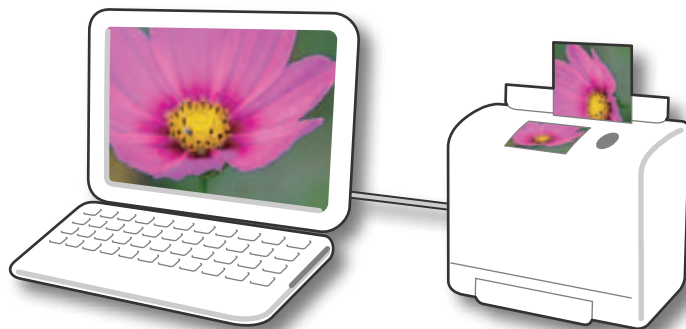
Prints images.

Configures the transfer folder and other settings.

# Printing

## Printing a Single Image on a Single Page

Prints one image per page.

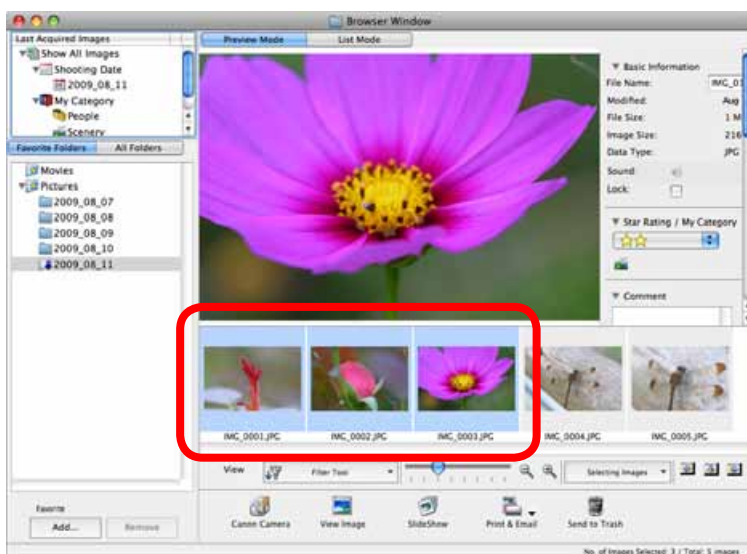


**HINT**

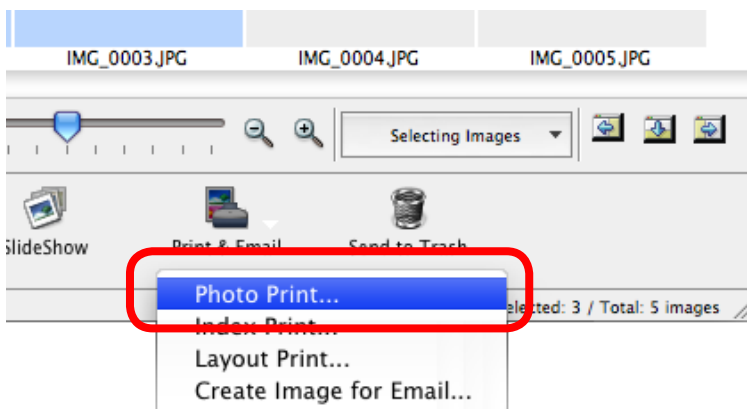
**Printing Movies**

Movies cannot be printed, but you can extract still images from movies, and print them after they have been saved. For details on how to save still images from movies, refer to [“Extracting Stills from Movies”](#).

**1** Select images for printing.



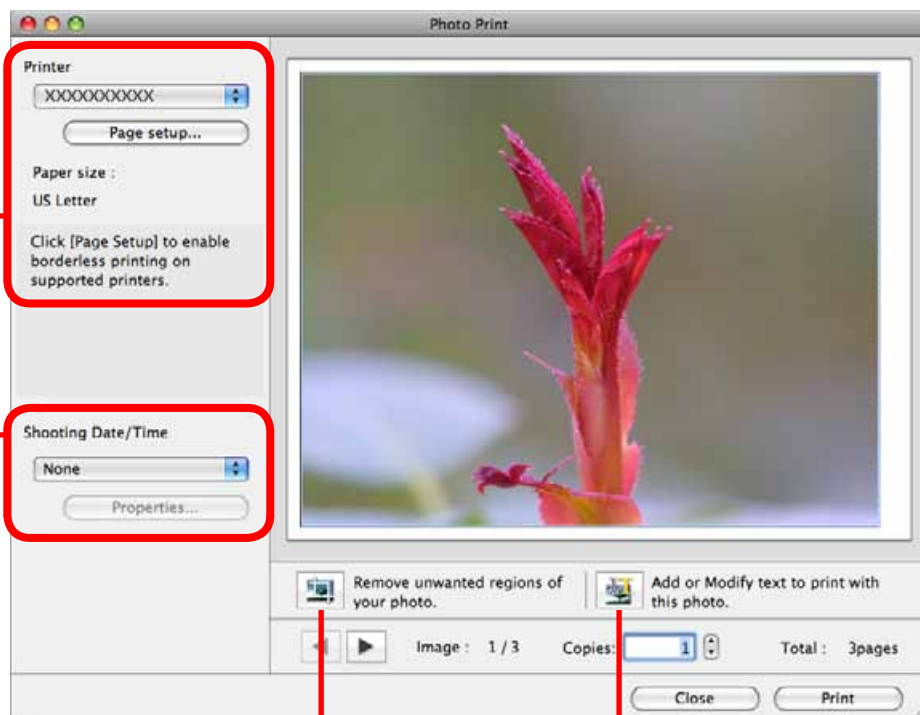
**2** Click [Print & Email], and [Photo Print].



### 3 Set the categories as desired.

Sets the printer, paper size and borderless printing settings.

Sets the shooting date/time imprint settings.



Click here to crop and print a portion of an image.

Click here to insert text onto an image and print.

**4 Click [Print].**  
Print window will display.

**5 Click [Print].**  
Printing will start.

**HINT**

**Laying Out and Printing**

You can also select multiple images, add captions and print freely composed layouts on a single page. Click [Print & Email] in the Control Panel and select [Layout Print]. The shooting date will automatically appear when you perform a layout print if you click the [ImageBrowser] menu, followed by [Preferences] and [Layout Print], and place a check mark beside [Shooting Date].

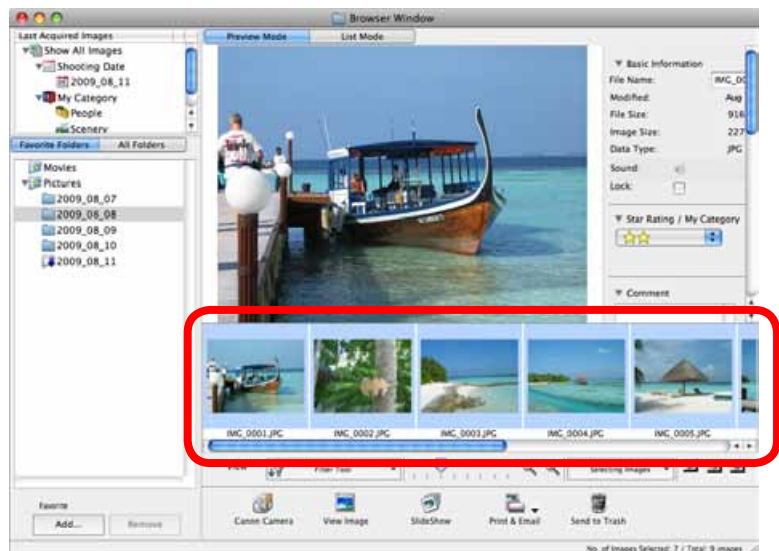


# Index Print

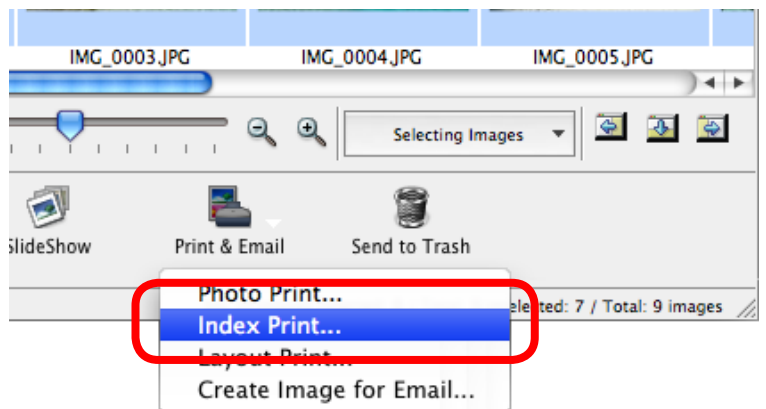
Prints an index of the images.



**1** Select images for printing.



**2** Click [Print & Email], and [Index Print].





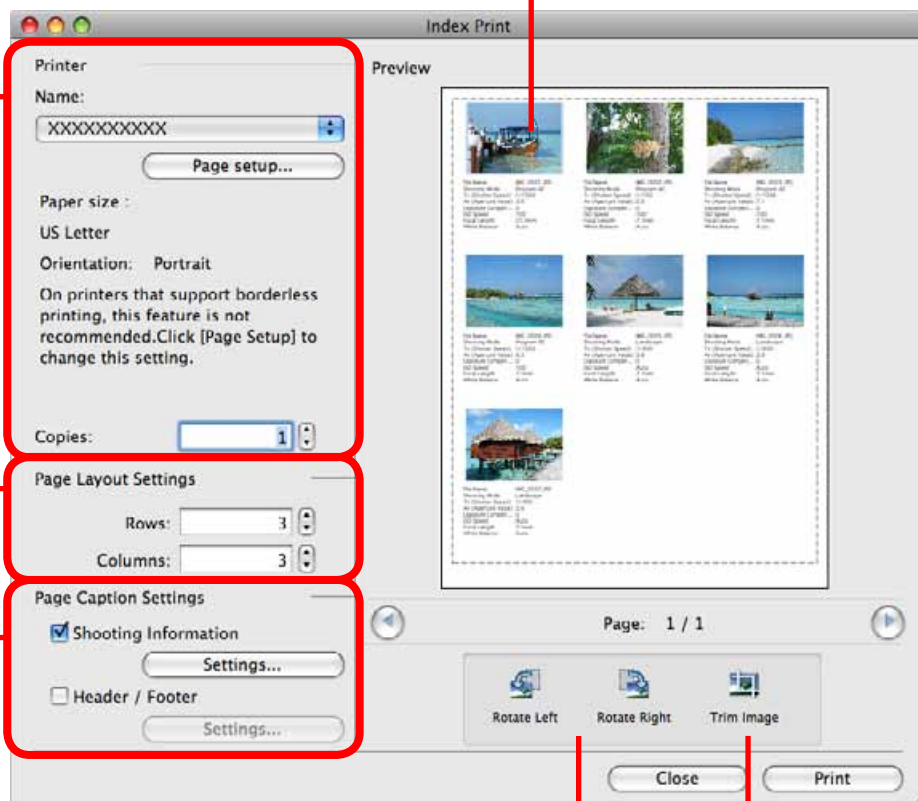
### 3 Set the categories as desired.

Sets the printer, paper size and number of print copies settings.

Sets the number of rows or columns.

Configures the printing of the shooting information, comments, headers, footers or page numbers.

Select an image to rotate or trim.



Rotates selected images.

Click here to crop a portion of the selected image and print it.

**4 Click [Print].**  
Print window will display.

**5 Click [Print].**  
Printing will start.

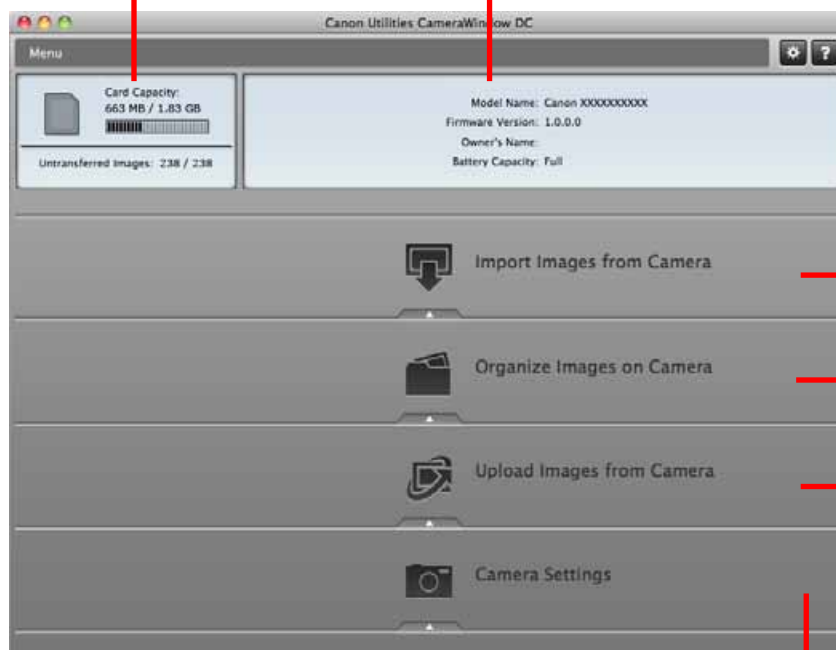
# How to Use CameraWindow

## First Menu Screen to Open

This screen appears when the camera is connected to your computer. Click each button to display the available options.

Displays in-camera memory card information.

Displays camera information.



Starts operations for transferring images from the camera to your computer.


Starts operations for protecting, rotating, and deleting images on the camera. Also transfers images from your computer to the camera.

Starts operations for uploading movies on the camera to web services.


Starts operations for setting the camera start-up screen, start-up sound, and various camera sounds. For details, refer to ["My Camera Settings"](#) in ["More Advanced Techniques"](#). This menu may not appear depending on your camera model.

### HINT

#### Customizing CameraWindow Functions

If you click the  button as shown in the upper right of the screen, you can customize various functions to make CameraWindow easier to use. You can change the automatic transfer settings, the start-up screen that appears when starting CameraWindow, and the transfer destination folder.

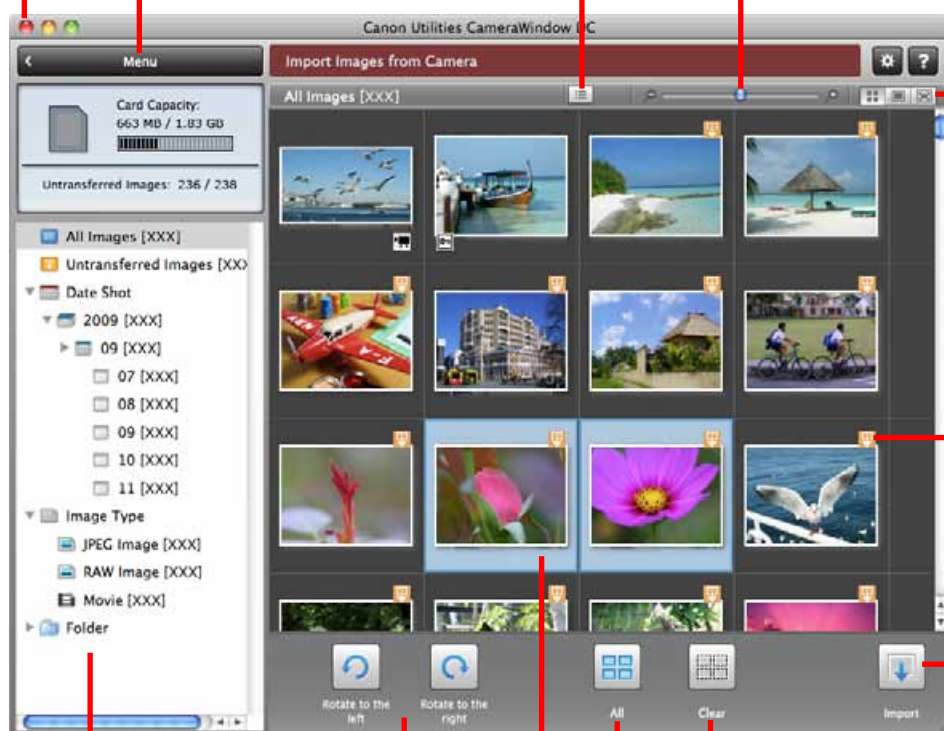
## Image Transfer Screen

This screen appears when you click [Import Images from Camera] on the Menu screen, then click [Select Images to Import]. Select the image you want to transfer and click the  button to transfer the image to your computer.

### Viewer Window (thumbnail display)

Closes CameraWindow.


Returns to the Menu screen.




Images on the camera that match the selected filter display in the area to the right.

  Rotates chosen images 90° to the left or right.

The background of chosen images turns blue.

 Turns the shooting date and folder name below the thumbnails on and off (when in thumbnail display).

 Changes thumbnail size (when in thumbnail display).


 Switches between window display modes.


 Thumbnail display

 Preview display

 Full screen display

Double-clicking an image switches to preview display when a single image is selected.

 This mark appears on images that have not yet been transferred.

 Transfers the image chosen in Viewer Window to your computer.

 Cancels image selection.

 Selects all images.

### ! IMPORTANT

- The functions (buttons) that display will differ depending on the camera model.

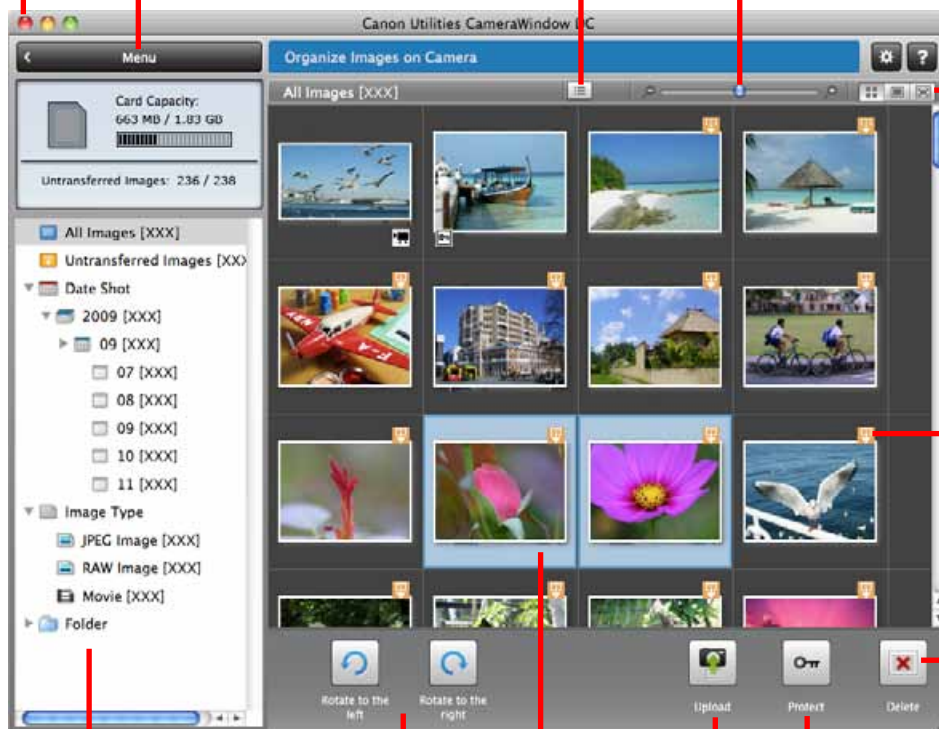
## Organize Images Screen

This screen appears when you click [Organize Images on Camera] on the Menu screen, then click [Organize Images]. Clicking a folder on the left will display all images within the folder as thumbnails (small images) on the right of the screen.

### Viewer Window (thumbnail display)

Closes CameraWindow.

Returns to the Menu screen.



Images on the camera that match the selected filter display in the area to the right.


Rotates chosen images 90° to the left or right.

The background of chosen images turns blue.

Turns the shooting date and folder name below the thumbnails on and off (when in thumbnail display).

Changes thumbnail size (when in thumbnail display).

Switches between window display modes.


 Thumbnail display


 Preview display

 Full screen display

Double-clicking an image switches to preview display when a single image is selected.


This mark appears on images that have not yet been transferred.

 Deletes the image chosen in Viewer Window.

 Protects/cancels protection for the image chosen in Viewer Window.

 Transfers images on your computer to the camera.

### ! IMPORTANT

- The functions (buttons) that display will differ depending on the camera model.
- Clicking the  (Delete) button will delete the image from the camera. Exercise adequate caution, as you cannot retrieve the deleted images.

# How to Use the Browser Window

## Browser Window

This is the main window for performing tasks in ImageBrowser.

### Last Acquired Images

You can check images by shooting date or My Category.

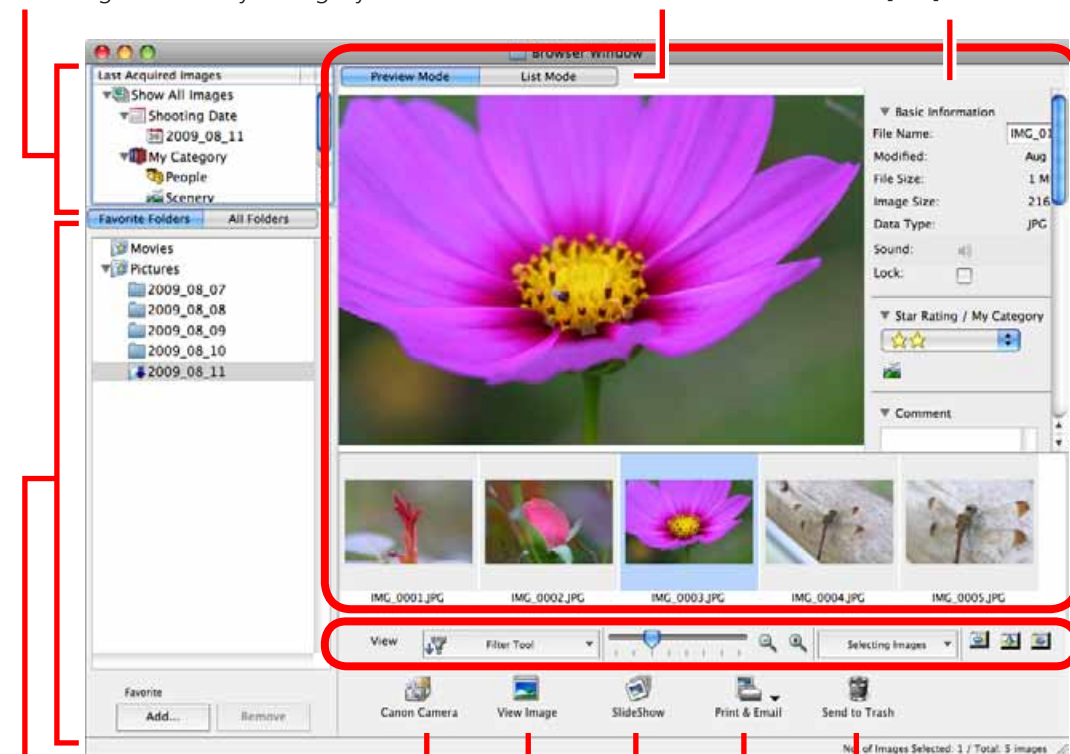
### Display Mode

Selects a display mode for the Browser Area.

### Image Information Panel

**When in Preview Mode:** Displays information about the selected image.

**When in List Mode:** Displays image information if you click the [File] menu and select [Get Info].



### Browser Area

- Displays the images in the selected folder.

### Display Control Panel

Configures the settings for displaying images in the Browser Area.

### Canon Camera

Displays CameraWindow.

### View Image

Displays the selected image in the Viewer Window.

### Slide Show

Displays the selected images in succession in the window.

### Send to Trash

Deletes selected images or folders.

- Deleted images are placed in the Trash.
- If you mistakenly send an image to the Trash, click the [Trash] icon in the Dock and restore the image to its original folder in the Finder.

### Print & Email

Prints the selected image(s).

Or creates an image attachment for email.

### Folder Area

Selects a folder to display.

- You can register folders you use often as Favorite Folders ( ). Register by clicking [Add]. To delete a folder in the Favorite Folders area, select a folder and click the [Remove] button.

### Rotate Image

- To rotate images, click the [Edit] menu and select [Rotate Image].
- To rotate the original image in the displayed direction, click the [Edit] menu and select [Rotate According to Rotation Information].



## Display Modes

Select a browser area display mode to fit your purposes.



**Preview Mode:** allows the image information to be read while viewing the image.



**List Mode:** allows thumbnails to be viewed at a size suited for easy viewing.

## Display Control Panel

This panel adjusts the display settings for the Browser Area.

**Display Size**  
Changes the size of the thumbnail in the Browser Area.

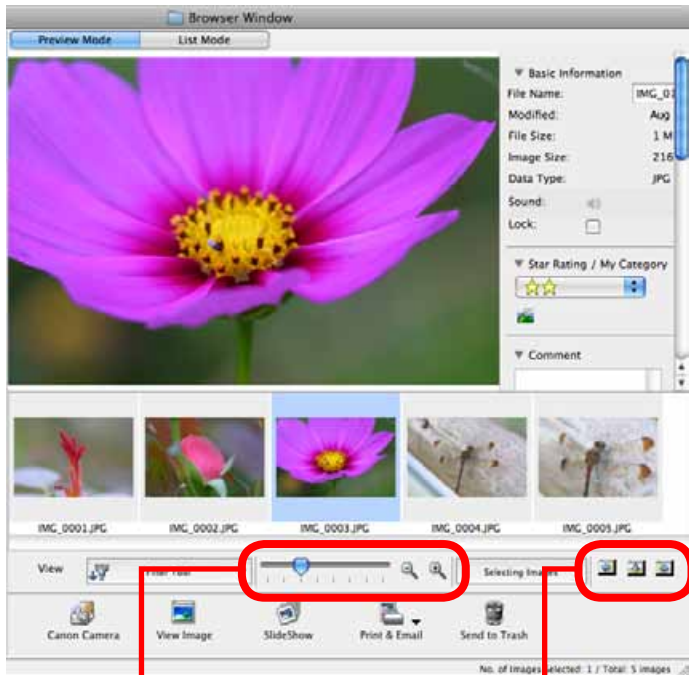
**Selection Menu**  
Click this to select/deselect all images in the Browser Area.

**Filter Tool Menu**  
Displays only images that correspond to specific conditions.

**Hide Buttons**  
Left: Hides the Folder Area and the Last Acquired Images.  
Middle: Hides the control panel.  
Right: Hides the Show Shooting Information panel in the [Preview] display mode.



## Browser Area Tasks



**Change the Display Size**  
You can change the size of the thumbnails.

**Show Window**  
You can switch between showing/hiding the Folder Area, Control Panel and Information Panel.

## Functions Used in the Browser Area

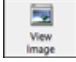
### Create New Folder

To create a new folder in the Browser Area, click the [File] menu and select [New Folder].

### Select Images

Clicking an image in the Browser Area selects that image. To select multiple images, hold down the [shift] key or [⌘] (Command) key while clicking images, or hold down the [option] and [shift] key together and click a starting and ending image to select a range of adjacent images.

### Display Images

Double-clicking an image in the Browser Area (or selecting the image and clicking ) displays it in the Viewer Window.

### Move, Copy Images

To move an image between folders, drag it over the destination folder and release the mouse button. To copy an image, hold the [option] key while releasing the mouse button as above.

### HINT

#### Right-Click Context Menus

Right-clicking (or [Control] key and clicking) over a window or image displays contextual menus. These menus contain the functions available in the current context as well as other convenient functions. Use the context menus to increase your efficiency.

## File Information Window

The File Information Window displays when you select an image in the Browser Area, select [List Mode], and then click the [File] menu and select [Get Info].

### File Name

You can change file names.

Switches between showing and hiding detailed information.

Switches between showing and hiding detailed information for the category.

### Star Rating / My Category

Sets the rating for an image. An icon will display if a My Category is set (certain models only).

### Comment

You can type a comment here.

### Keyword

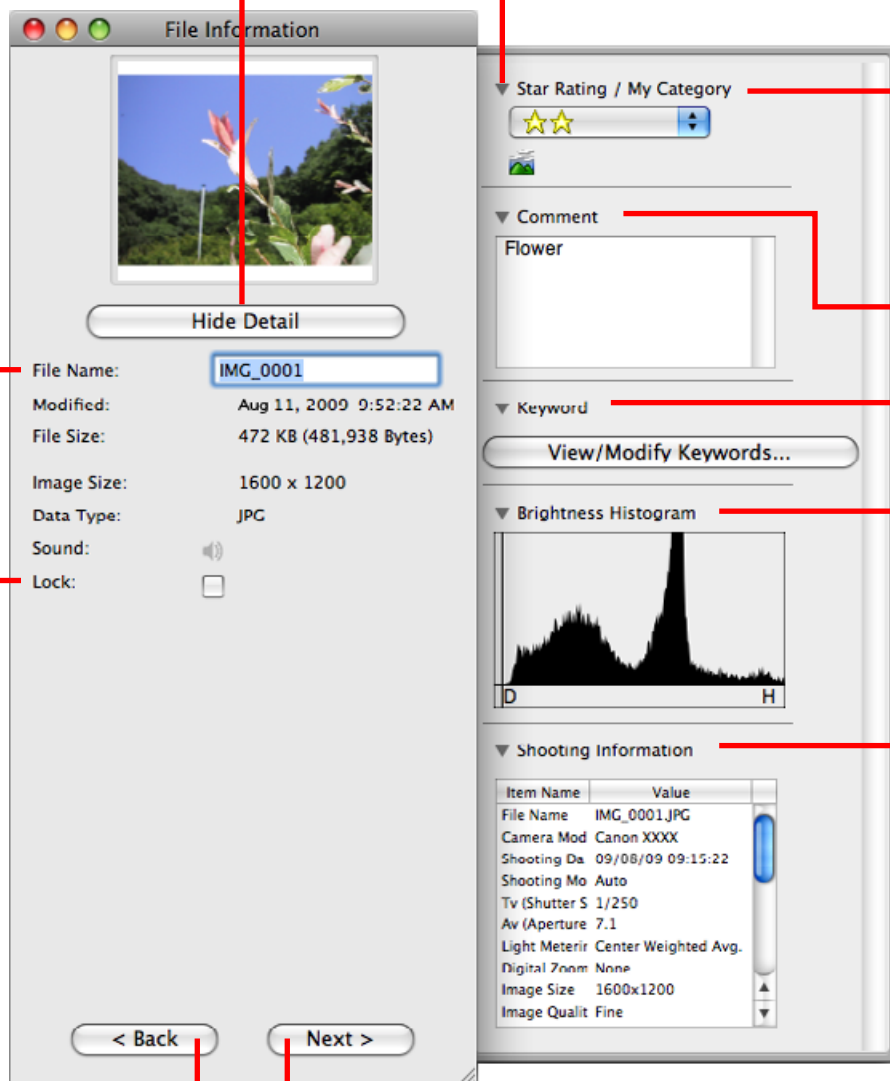
Sets the keywords used in searches.

### Brightness Histogram

A graph of the highlights and shadows distribution in an image.

### Shooting Information

Displays detailed information, such as the shutter speed and exposure compensation setting. The camera model will determine what information is displayed.



### Image Selector Buttons

When multiple images are selected, you can switch between images that display information in the File Information Window.

### Lock

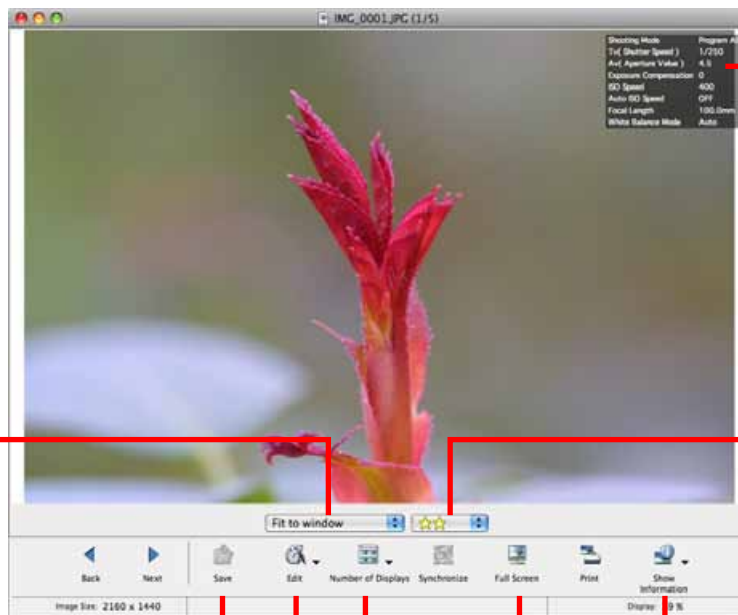
Prevents an image from being overwritten or deleted.

# Viewer (View Image) Window

Double-clicking a thumbnail image in the Browser Window displays it in this window.



Change the display magnification. Zooming in displays the Navigator window to show the relative position on the image.



Shooting information

Set the Star Rating.

Save an image.

Edit an image.

Display multiple images side by side.

Display the shooting information. You can configure the information display by clicking the [ImageBrowser] menu and selecting [Preferences].

Display at full screen size.

- The [Display Original Image] button will display beneath RAW images in the Viewer Window. Click this button to display the converted image in the Viewer Window.
- The following window will appear when a movie is displayed.



You can control movie playback and sound volume.

You can extract stills from movies.

You can cut portions at either end of a movie clip.

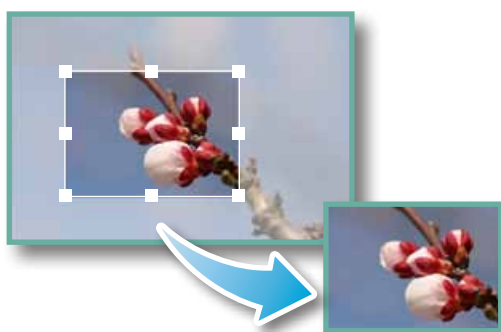
## Editing Images

### ! IMPORTANT

- The original image will be overwritten after an image is edited unless the file name is changed before saving it. To preserve the original image intact, change the file name when saving the edited image.
- This section introduces the procedures for starting from the [Edit] button in the Viewer Window, but you can also start the same process by clicking the [Edit] menu and selecting [Edit still image].

### Trimming—Cropping a Portion of an Image

Use this to delete unnecessary portions of the image and leave only the necessary portions.



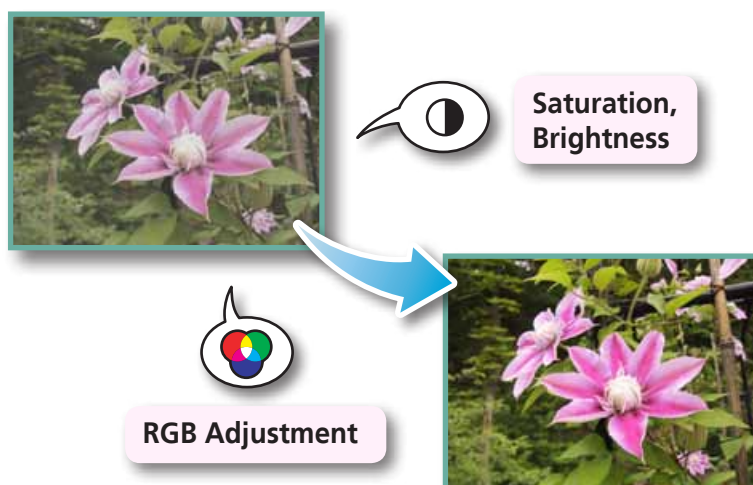
#### Procedures

- 1 Double-click an image.
- 2  [Edit] and [Trim].


- You can also input values or an aspect ratio to specify the trim area.
- Movies and RAW images cannot be edited.

### Color/Brightness Adjustment

Adjusts the images' RGB values (red, green, blue) and the saturation and brightness.



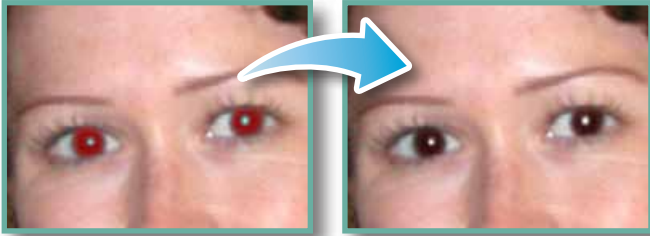
#### Procedures

- 1 Double-click an image.
- 2  [Edit] and [Color/Brightness Adjustment].

- Movies and RAW images cannot be edited.

## Red Eye Correction

Restores eye appearance to the original color when light reflected from the flash makes them appear red.



- Click [Start] when Auto Mode is selected.
- Switch to Manual Mode if Auto Mode cannot correct the image, and select the location of the eye to correct.

### Procedures

- 1 Double-click an image.
- 2  [Edit] and [Red Eye Correction].

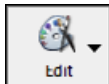
- Movies and RAW images cannot be edited.
- If a message appears that recommends installation of additional software when using Mac OS X v10.6, follow the message to install the software.

## Inserting Text

Use this to insert text onto the image.



### Procedures

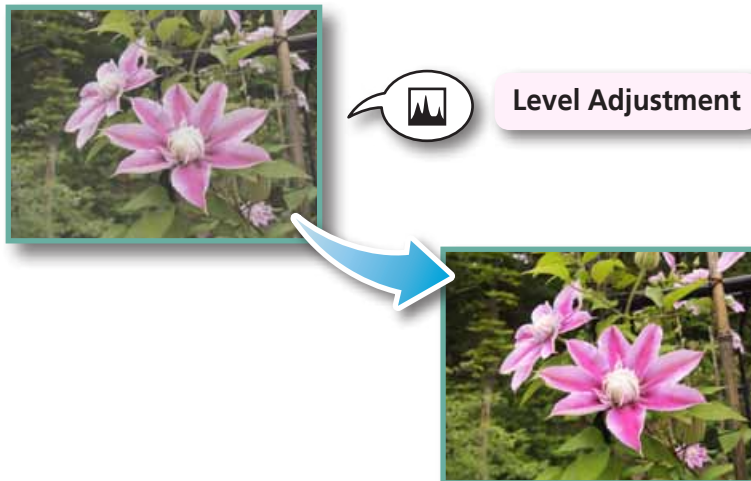
- 1 Double-click an image.
- 2  [Edit] and [Insert Text].

- Placing a checkmark in the [Antialias] box causes the text edges to blend in with the underlying image.
- Movies and RAW images cannot be edited.

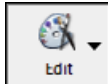


## Correcting Levels

You can adjust the highlights (brightest portions), shadows (darkest portions) and mid-tone levels of an image while viewing its histogram.



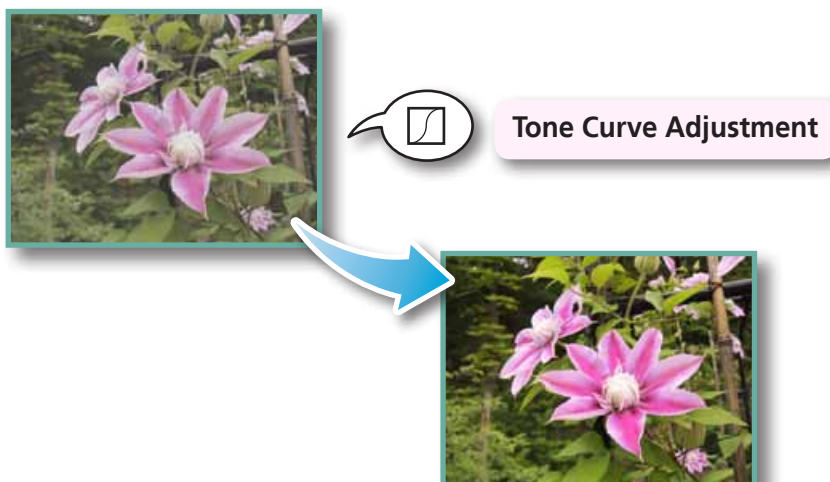
### Procedures

- 1 Double-click an image.
- 2  [Edit] and [Level Adjustment].

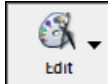
- Movies and RAW images cannot be edited.

## Correcting Tone Curves

You can adjust the color balance and brightness of an image using its tone curve (input/output conversion graph of image brightness).



### Procedures

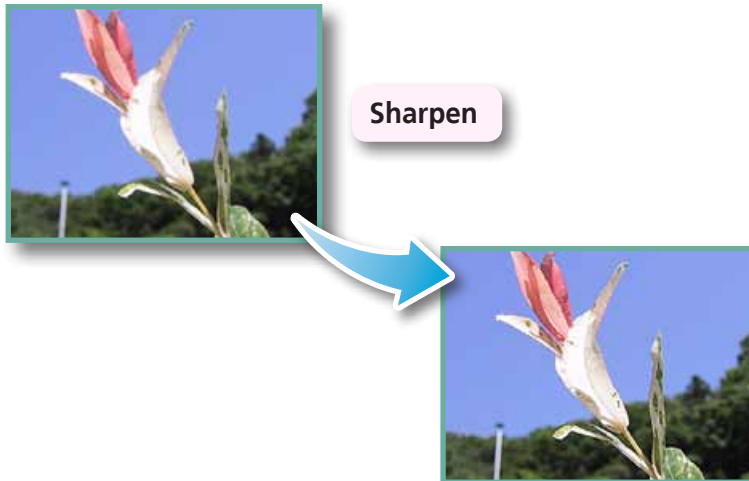
- 1 Double-click an image.
- 2  [Edit] and [Tone Curve Adjustment].

- Movies and RAW images cannot be edited.



## Adjusting Sharpness—Emphasizing Outlines

Makes images appear sharper by emphasizing the outlines of subjects, such as people and objects.



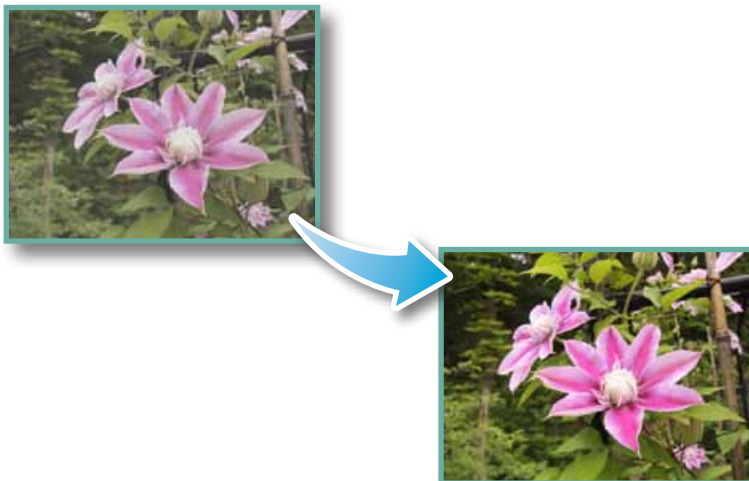
### Procedures

- 1 Double-click an image.
- 2  [Edit] and [Sharpness].


- Movies and RAW images cannot be edited.

## Auto Adjustment

Automatically adjusts the image color balance and brightness.



### Procedures

- 1 Double-click an image.
- 2  [Edit] and [Auto Adjustment].

- Movies and RAW images cannot be edited.

## Using Other Editing Software

If you register another image editing program with ImageBrowser in advance, you can use that software to edit an image selected in ImageBrowser.

### Registering an Editing Program

Register the program so it can be started from within ImageBrowser.



ImageBrowser

Other Image Editing Program



#### Procedures

1  ImageBrowser File Edit View Internet

[ImageBrowser] and [Preferences].

2 [Register Application]

### Editing Images with a Registered Editing Program



#### Procedures

1 Double-click an image.

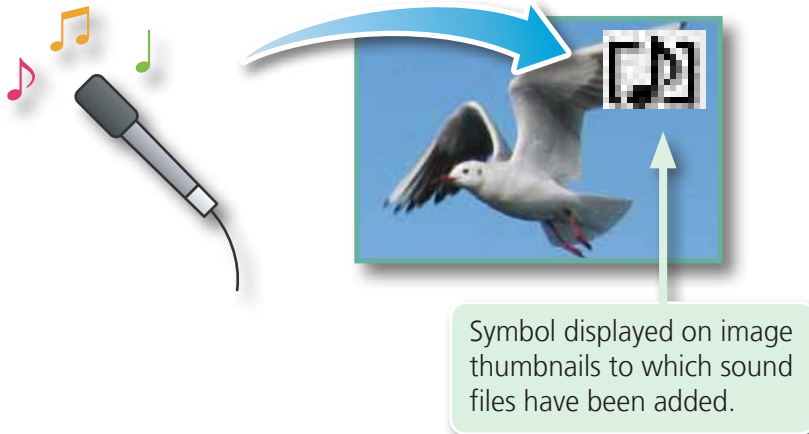
2  [Edit] and [Edit with Registered Application].

- The shooting information may be lost from images recorded with the camera and then processed and saved with another image editing program.
- Movies and RAW images cannot be edited.

## Attaching Sounds

You can add sound to images and play back the sounds.

### Adding Sound



#### Procedures

1 Select an image.

2 ImageBrowser **File** Edit View Internet

[File], [Sound] and [Record].

- ImageBrowser's Sound Recorder uses the Mac OS X recording function. If required, prepare such equipment as a microphone, and check that recording is enabled in the [System Preferences], [Sound] window.
- To delete a recorded sound, click the [File] menu and select [Sound], followed by [Send to Trash].
- To record a new sound for an image that already has one associated with it, click the [File] menu and select [Sound], followed by [Record].

### ! IMPORTANT

- Sounds cannot be attached to movies.

### Playing an Image Sound File



#### Procedures

1 Select an image.

2 ImageBrowser **File** Edit View Internet

[File], [Sound] and [Play].

- You can also play sounds in the Preview Mode and the File Information Window.

## Creating Panoramic Images–PhotoStitch

You can create wide panoramic images by moving the camera slightly when recording a series of images and merging them into one image.



Use the PhotoStitch program to create panoramic images.



### Procedures

1 Select the images that you want to stitch together.

2



[Edit] and [PhotoStitch].

- Movies and RAW images cannot be edited.

### HINT

#### Using the Stitch Assist Mode

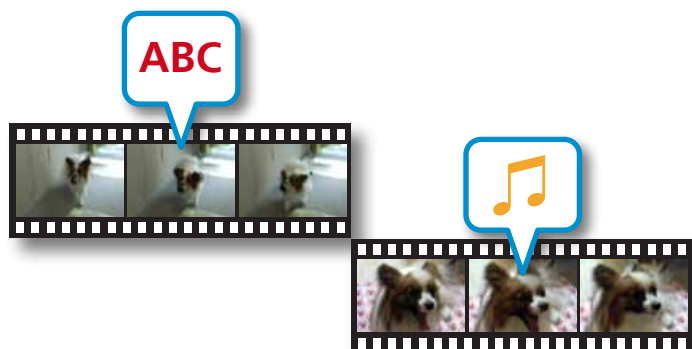
If you use the camera's Stitch Assist mode to record the images, PhotoStitch can automatically detect the image order and merge direction, making it easier to merge the images. (Some camera models may not feature the Stitch Assist mode.)

### IMPORTANT

- If a message appears, notifying you that the computer has insufficient memory, try one of the following methods to solve the problem.
  - Close all other applications other than PhotoStitch.
  - Reduce the size or number of images to combine.
  - In the [Save] tab, select [Adjust image...], then in "Saved Image Size" reduce the size.

## Editing Movies

You can create original movies by linking movie clips and still images. You can even add titles and other text, background music and various special effects to the movie.



### Procedures

1 Select an image (movie or still image).



2

[Edit] and [Movie Edit].

- You can configure the default settings for editing movies by clicking the [MovieEdit Task] menu and selecting [Preferences].

### HINT

#### Recordable Movie Length

- The length of movies you can save is shown at right. A message will appear if you try to save a longer movie. Reduce the length or size of the movie if this happens.

Movie Size	Max. Length
1920x1080	Under 10 minutes
1280x720	Under 20 minutes
640x480	Under 30 minutes
320x240	Under 60 minutes

### IMPORTANT

- Movies edited with this function cannot be transferred back to the camera.
- Saving movies takes time, especially MOV type movies selected with [Save image type] takes a considerable amount of time.
- There is a file number limit when editing MOV type movies. To edit and save an MOV movie with a size of 1920 x 1080 at the same size and file type, set the number of files to 20 or less. Likewise, with 1280 x 720 MOV movies, the number of files should be set to 40 or less, and with 640 x 480 MOV movies, 80 or less.



# Converting RAW Images–Digital Photo Professional

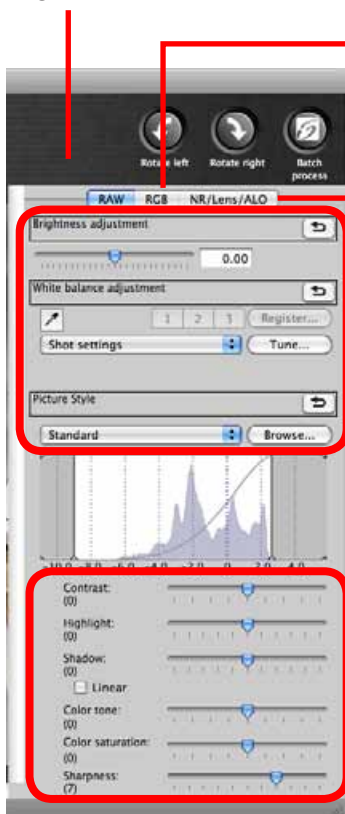
You can convert RAW images to JPEG and TIFF images.

## Digital Photo Professional’s Main Window



Selects folders containing images.

## Digital Photo Professional’s Tool Palette



You can adjust all three RGB channel levels together or separately with the Tone Curve.

Reduces noise that occurs when shooting night time scenery, or when shooting at a high ISO speed.

Adjusts the brightness, white balance and picture style.


Adjusts the contrast, color tone, color saturation and sharpness.

## Procedures

1 Select a RAW image.



[File] and [Process RAW Images by Digital Photo Professional].

3 Click  (Edit image window).

4 Adjust the image brightness and white balance in the tool palette.

- The modified contents (the information for image processing requirements) are saved along with the image as a “recipe”.
- With Digital Photo Professional, you can adjust images to achieve the best results for your desired scene or subject by specifying a picture style.
- The items available to be modified differ depending on the camera model.



5 [File] and [Convert and save].

- After setting the file type, size, and destination folder, click [Save].
- Only RAW images compatible with Digital Photo Professional can be processed.
- Ensure that you use the RAW image conversion software included with your camera.



To print, using Digital Photo Professional, select an image in the Main Window, then click the [File] menu and select the print function. Digital Photo Professional offers the following printing methods.

Printing Method	Description
Single Print	Automatically sets the layout for printing a single image on a single page.
Detailed Setting	Gives you the freedom to set the layout, add titles, or print with shooting information.
Contact Sheet	Prints a line-up of multiple images on one page (also allows you to select the number of images, layout, and add titles).

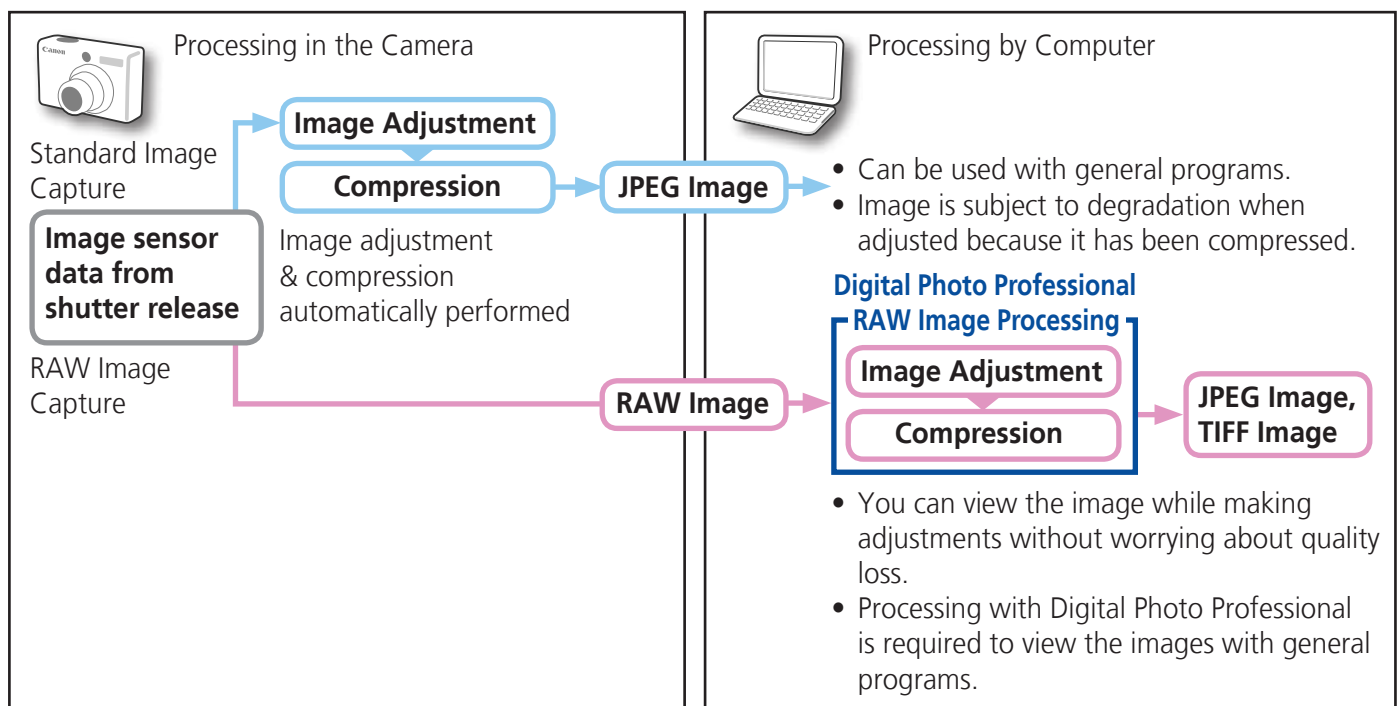
**IMPORTANT**

- RAW images can only be captured on certain camera models that list "RAW" as one of the data types included in the "Specifications" section of the *Camera User Guide*.
- Only RAW images compatible with Digital Photo Professional can be processed. Check the "Data Type" item of the "Specifications" section of the *Camera User Guide* for compatibility.
- For a more detailed explanation of operating procedures, download the Digital Photo Professional manual (PDF format) from the Canon website.

**HINT**

**About RAW Images**

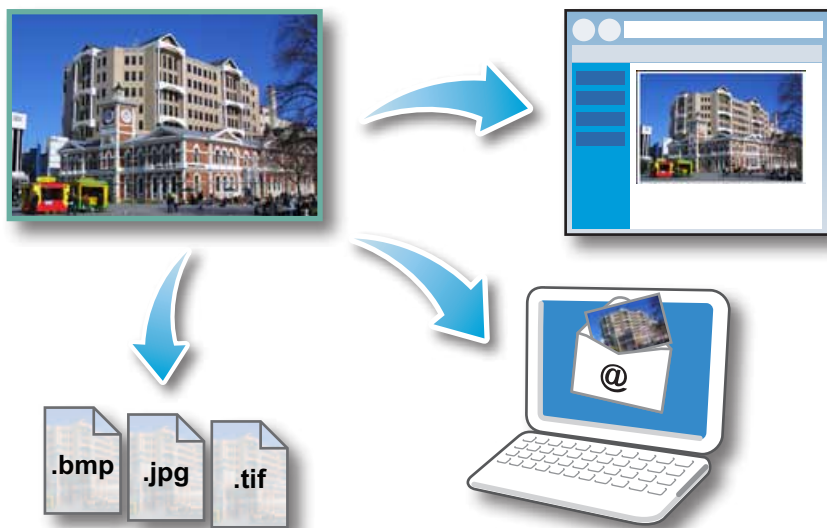
RAW images contain the data captured by the camera's image sensor without modification. Since they contain raw data that differs from the usual JPEG images by not having any image adjustment or compression processing performed in the camera, they can be converted on a computer with a lossless process.



# Exporting

## Changing Image (Stills) Sizes and Types

You can change an image's size and format when exporting it so that it can be published on the Internet or attached to an email message.



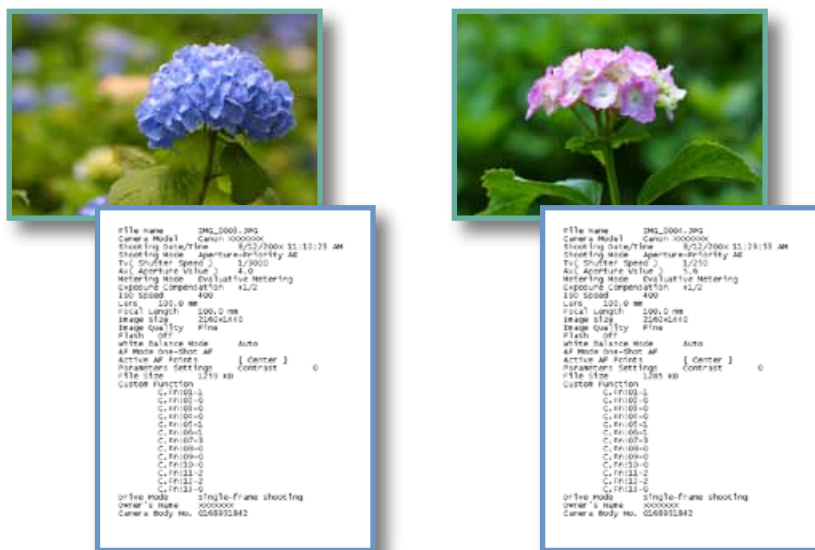
### Procedures

- 1 Select an image.
- 2 **[File]** and **[Export Image]**.
- 3 **[Edit and Save Image]**
- 4 **[Next >]**

- You will lose the shooting information if you save images as a type other than JPEG.

## Exporting Shooting Information

You can export the shooting information recorded with an image, such as the shutter speed and exposure, as a text file.



Ascertain the causes of failed photos or compare the settings for several images.

### Procedures


- 1 Select an image.
- 2 **[File]** and **[Export Image]**.
- 3 **[Export Shooting Properties]**
- 4 **[Next >]**

## Creating Computer Screen Saver Images

You can export images to serve as computer screen savers.



### Procedures


- 1 Select an image.
- 2  [File] and [Export Image].
- 3 [Export as a Screensaver]
- 4 [Next >]

## Creating Computer Wallpaper Images

You can export images to serve as computer wallpaper images.

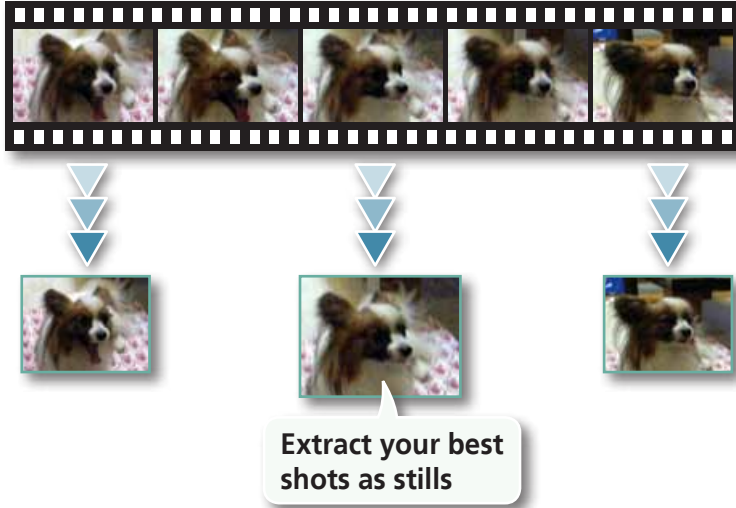


### Procedures

- 1 Select an image.
- 2  [File] and [Export Image].
- 3 [Export an Image as Wallpaper]
- 4 [Next >]


## Extracting Stills from Movies

You can extract and save stills from your favorite frames recorded in a movie.



### Procedures

1 Select an image.

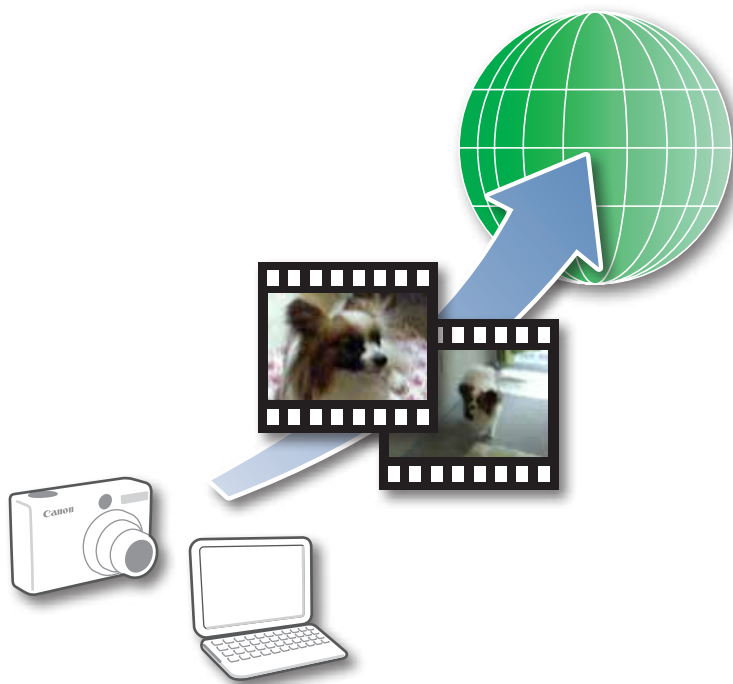
2 

[Edit] and [Extract frames from a movie].



# Uploading Movies to YouTube

## Uploading to YouTube

You can upload movies you have shot to YouTube. You can upload movies saved on the camera or a computer.




### Procedures

- 1 **Connect the camera to a computer to start CameraWindow.**
  - For details, refer to steps 1- 2 in "Transferring Images".
- 2 **[Upload Images from Camera]**
- 3 **[Upload Movies to YouTube]**
- 4 **Select movies.**
- 5 **Click  (Next).**
- 6 **Input a title and description, then click  (Upload).**
- 7 **Enter your YouTube username and password, and sign in.**

### HINT

#### Uploading Movies Saved on a Computer

In the [Applications] folder, select the [Canon Utilities] folder, then in the [CameraWindow] folder, select the [CWUtility] folder, and double click the [Movie Uploader for YouTube] icon. Click [Add] in the screen that appears, then after adding movies to the upload list, click the  (Upload) button.

### IMPORTANT

- Depending on YouTube specifications, or future changes to specifications, this function cannot be guaranteed.
- The maximum length for uploadable movies is less than 10 minutes, and the maximum file size is less than 1 GB.
- Movies that have been edited on a computer cannot be uploaded.
- Internet access is required to upload movies (You must already have an account with an Internet service provider (ISP), browser software installed and an Internet connection).
- Any ISP account charges and access fees must be paid separately.





# Email

## Attaching Images to Email

You can send images as email file attachments.



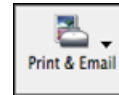
You can configure the image size and quality settings.



### Procedures

1 Select images.

2



[Print & Email] and [Create Image for Email].

- You can configure how the email program automatically starts up by opening the [Applications] folder, and double-clicking the [Mail] icon to start the Mail program, and clicking the [Mail] menu, followed by [Preferences] and the [General] tab.
- Images in the [Email Images] folder can be found by opening the [Users] folder on the startup disk, followed by the [User Login Name], [Library], [Preferences], [ImageBrowserUserData] and [Mail] folder.

### ! IMPORTANT

- If the e-mail software does not start automatically, first save the images to your computer, then start your e-mail software to attach and send the images. The destination folder for saved images can be set with [Custom Settings].

# Slide Shows

## Viewing Images in Slide Shows

A multiple selection of images can be shown at full size on the screen in succession as a slide show.

You can freely configure the transition effects, information displayed and display time settings.



### Procedures

- 1 Select images.
- 2  [SlideShow]

- You can configure the slide show display method by clicking the [View] menu and selecting [Slide Show Options].

### HINT

#### Slide Show Button Functions

The following buttons appear at the bottom of the screen while a slide show is playing.

You can set the Star Rating for an image while it is displayed.

Go to first image

Rewind

Pause

Forward

Advance to last frame



After the slide show, the images you clicked during the show remain selected.

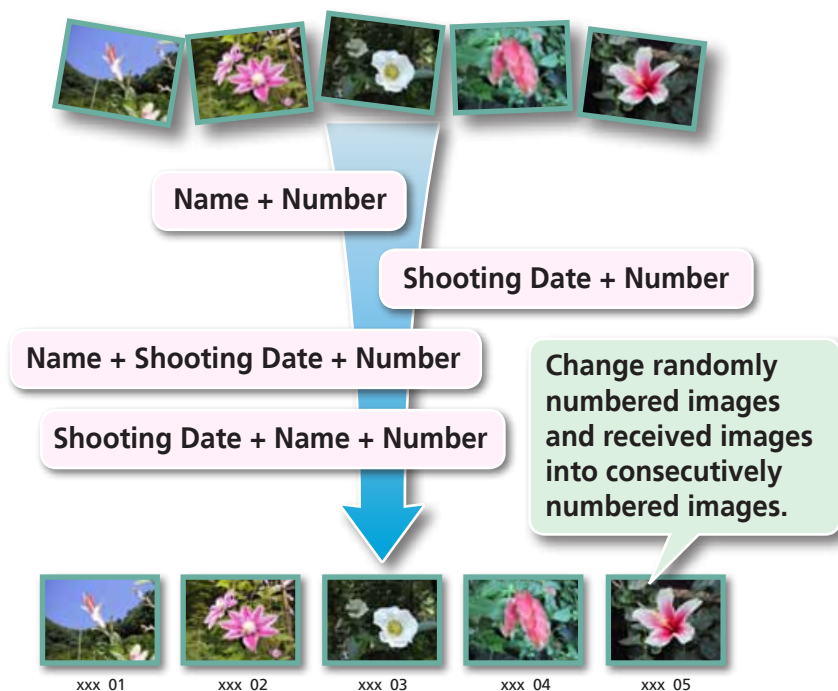
After the slide show, the images you clicked during the show appear in a printing window.

Stops the slide show.


# Image Management

## Changing File Names in Batches

You can change the file names of multiple images in one procedure.



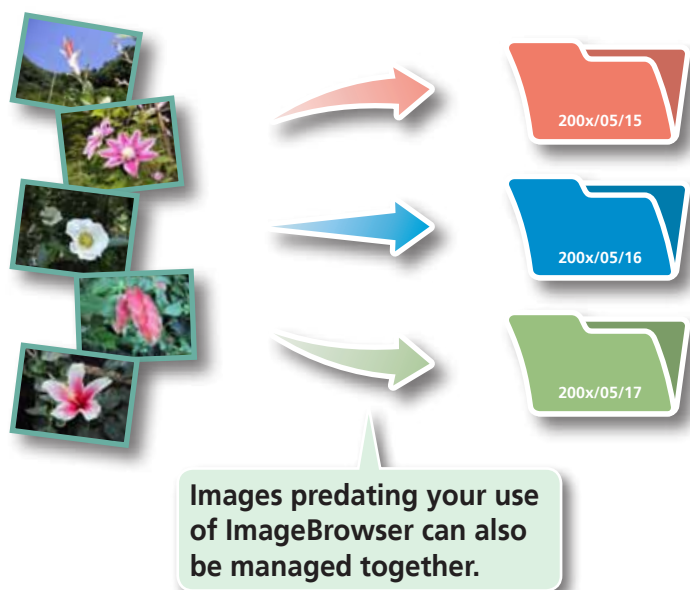
**Procedures**

- 1 Select an image.
- 2  [File], [Organize Image] and [Rename].


- You can change individual file and folder names by clicking on the file name in Preview mode or with the File Information Window.
- Changing the image name in ImageBrowser also changes the actual file name on the disk.

## Sorting Images into Folders by Shooting Date

You can sort images into folders by their shooting dates.



**Procedures**


- 1 Select an image.
- 2  [File], [Organize Image] and [Sort Images].
- 3 [The files will be separated into folders for each shooting date.]
- 4 [Next >]

## Classifying Images Into Star Ratings Folders

You can classify images according to their Star Ratings into separate folders.



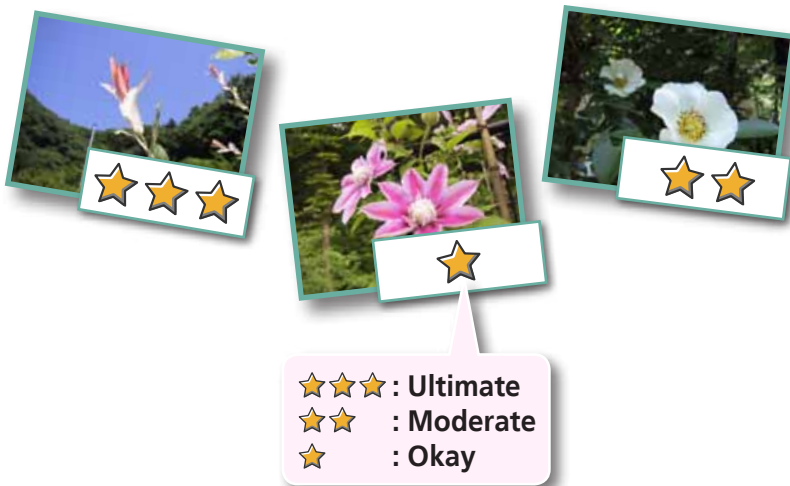
### Procedures

- 1 Select an image.
- 2  ImageBrowser **File** Edit View Internet
- 3 [File], [Organize Image] and [Sort Images].
- 3 [The files will be organized by star rating.]
- 4 [Next >]


# Configuring Image Information Settings

## Setting Star Ratings

You can set the Star Ratings used in searching and displaying images in the index list.



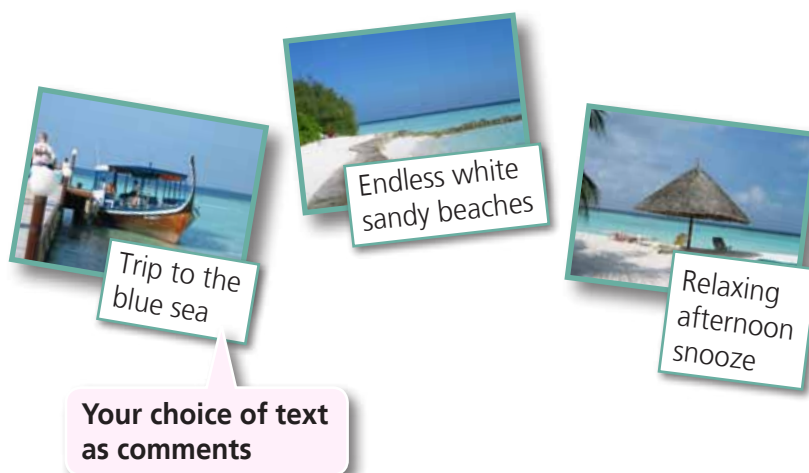
### Procedures

- 1 Select an image.
- 2  Switch to [Preview Mode].
- 3 Set [Star Rating].


- You can also set the Star Ratings by accessing the [Edit] menu, the File Information Window or the Viewer Window.

## Inserting Comments

You can freely insert your choice of text as Comments.



### Procedures

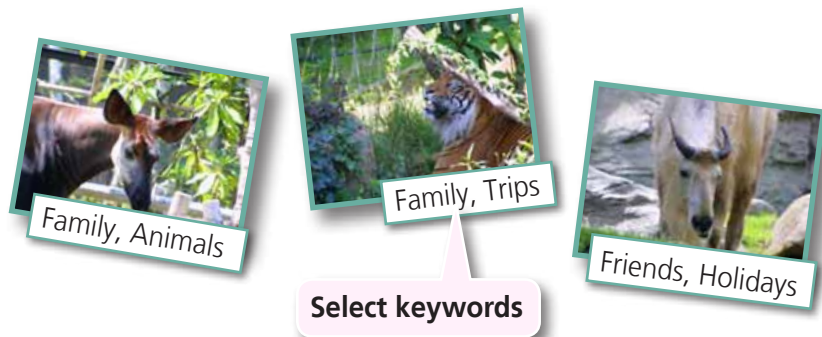
- 1 Select an image.
- 2  Switch to [Preview Mode].
- 3 Insert [Comment].

- Comments can also be managed in the File Information Window.




## Assigning Keywords

You can set Keywords for use in image searches.



### Procedures

- 1 Select an image.
- 2  Switch to [Preview Mode].
- 3 Set [Keyword].

- Keywords can also be managed from the [Edit] menu or File Information Window.
- To add keywords, click the [Edit] menu and select [Manage] from the [Keyword] submenu.

### HINT

#### About Image Information

This chart shows the information other than shooting information that can be added to images.

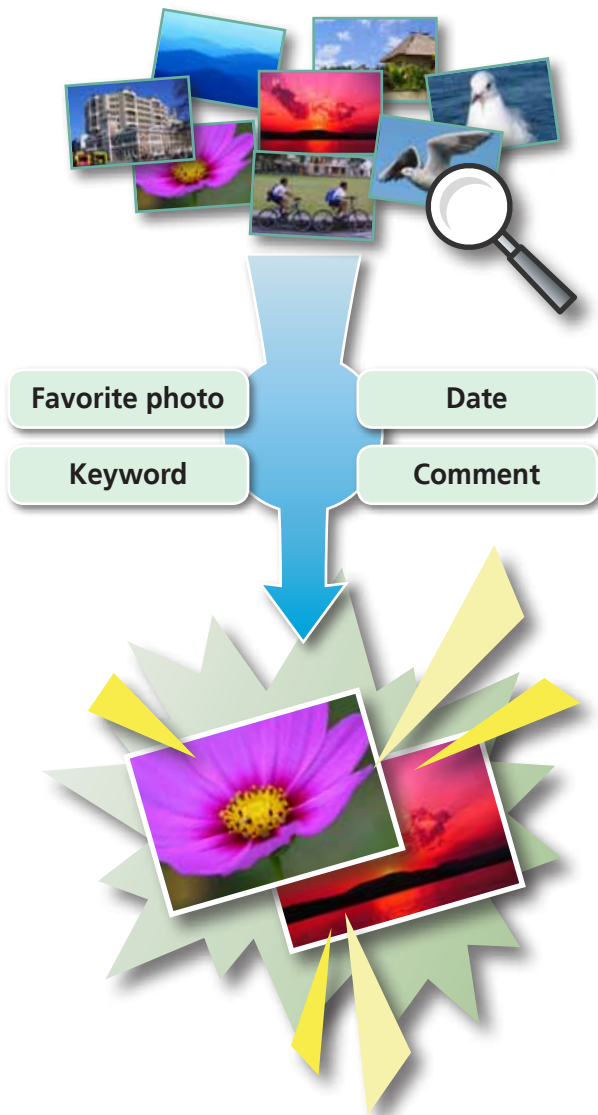
Information Type	My Category	Star Ratings	Comments	Keywords
Content	Categories such as People, Scenery, etc.	Categorized on a basis of 3 rankings: ★, ★★, ★★★	Text input without restriction regarding the shooting circumstances or associated memories.	Selections are made from a list (editable) of keywords, such as the photographic subject, place or action.
Configuration Method	Configured in Camera	Configured in ImageBrowser		
Used in Searches	—	○	○	○
Used as Filter Criteria	○	○	—	—
Display beneath Thumbnail	○	○	○	—

Categories displayed beneath thumbnails can be selected from the [View] menu and [View Settings] submenu.

# Searching, Filtering and Sorting Images

## Searching Images

You can search images using parameters extracted from the information associated with them.



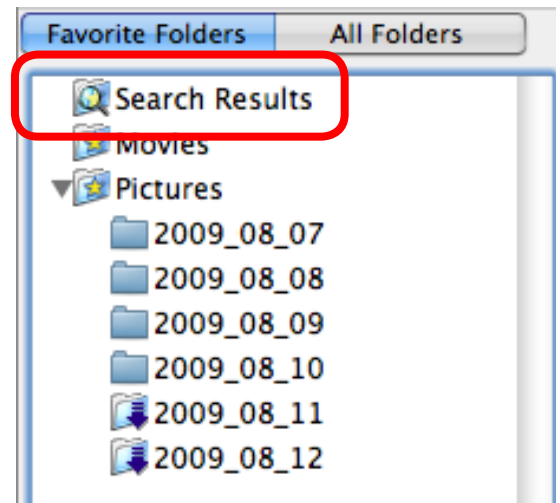
### Procedures

7

ImageBrowser File Edit View Internet

#### [File] and [Search].

- After a search, the correlated images display in the [Search Results] folder.



### HINT

#### Tasks Related to Search Results

You can select images in the [Search Results] folder and perform operations on them, such as printing or copying them to other folders.

### IMPORTANT

- Please note that deleting an image from the [Search Results] folder deletes the original image. Use caution in deleting items from this folder.



## Filtering Images

You can use filters to display only images meeting the selected parameters in the Browser Area.

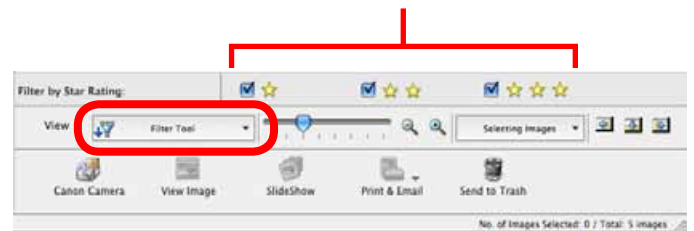


### Procedures

1 Filter Tool

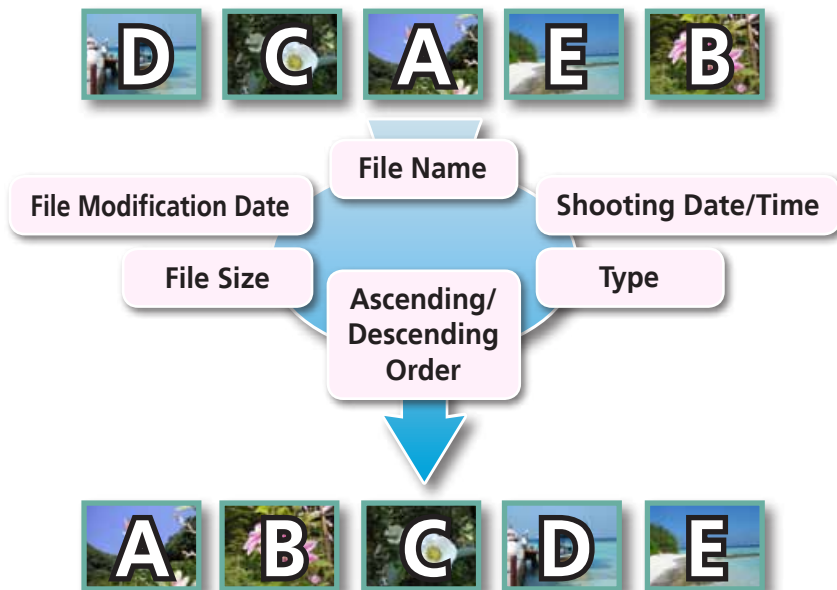
[Filter Tool]

This section is used to specify the filter criteria.



## Sorting Images

You can sort images in the Browser Area based on the specified parameters.



### Procedures

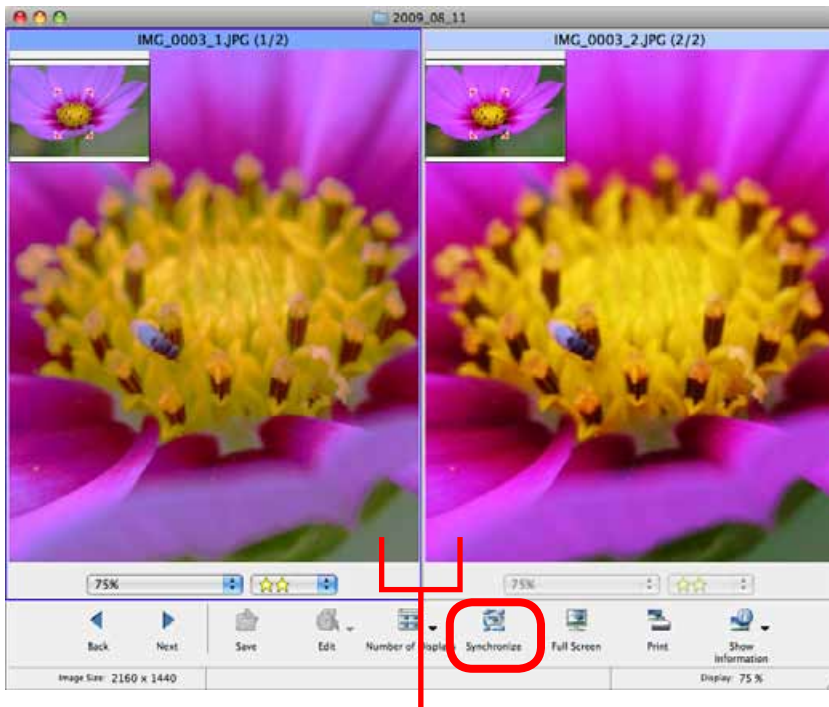
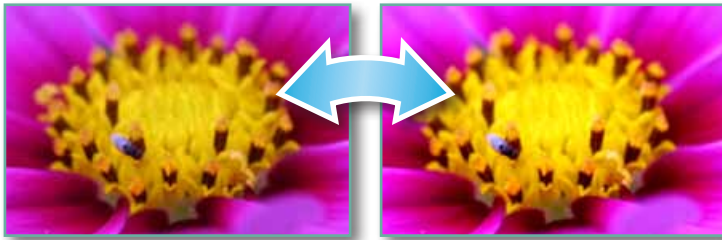
1 ImageBrowser File Edit **View** Internet

[View] and [Sort].

# Comparing Images

## Comparing Multiple Images

When a good photo opportunity arises, you can shoot the same subject using different shutter speeds and exposures. In ImageBrowser, it is easy to compare images so that minute differences can be detected.



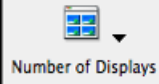
Actions performed on an image, such as scrolling or changing the magnification, are performed on the other image as well.

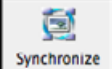


### Procedures

1 Select several images to compare.

2  [View Image]

3  Select a view method from [Number of Displays].

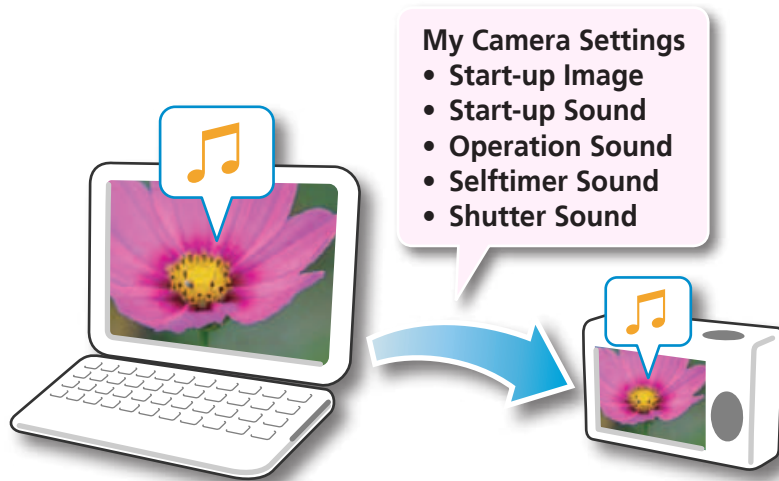
4  [Synchronize]

- Selecting [Synchronize] causes actions such as increasing/reducing the magnification level or scrolling around the image to apply to all of the selected images in lock step, making it easy to check minute details of focus, coloring and other image characteristics.

# My Camera Settings

## Changing the Shutter Sound and Start-Up Image

You can select from dedicated screens to register to the start-up screen that appears when turning the camera on, and dedicated sounds to register to various camera operation sounds (My Camera Settings).

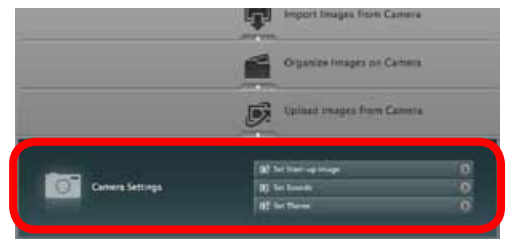


### Procedures

#### 1 Connect the camera to a computer to start CameraWindow.

- For details, refer to steps 1- 2 in "Transferring Images".

#### 2 [Camera Settings]



Select the desired item from the following and make settings.

- ▶ [Set Start-up Image]
- ▶ [Set Sounds]
- ▶ [Set Theme]

### ! IMPORTANT

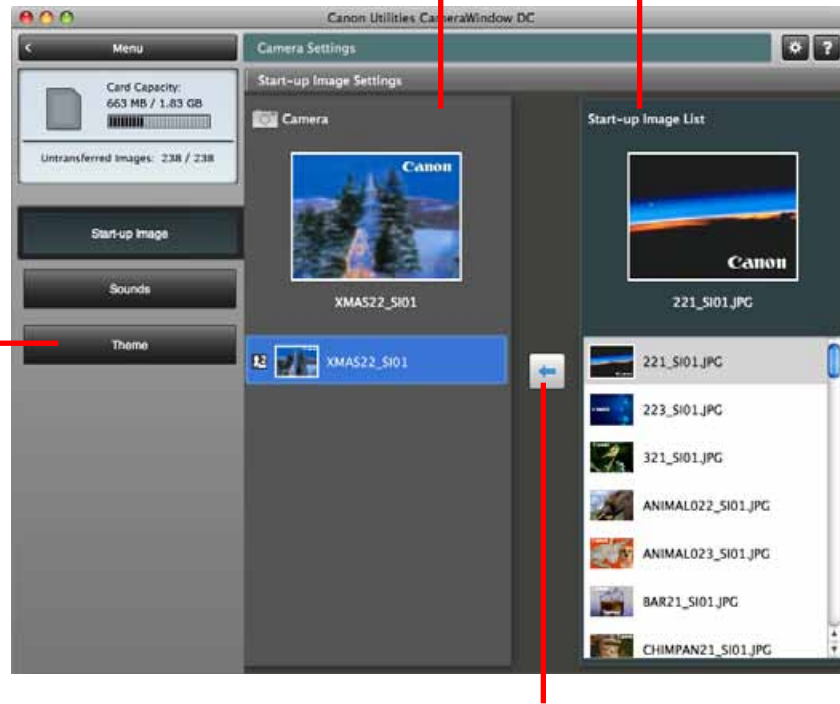
- My Camera Settings are only available on certain models, when [Camera Settings] displays in CameraWindow.



My Camera Settings registered in the camera.

My Camera Settings

You can register the start-up image, start-up sound, shutter sound, operation sound and self-timer sound collectively if you select [Theme].



After choosing a My Camera Settings file from the left-hand list, select a My Camera Settings file to replace in the right-hand list and click this button to register it in the camera.

**HINT**

**Downloading My Camera Settings Files**

You can also download various files to use in My Camera Settings from CANON iMAGE GATEWAY.

# Transferring Images

## Transferring Images to a Camera

Images transferred once to a computer can be transferred back to the camera.



### Procedures

**1** Connect the camera to a computer to start CameraWindow.

- For details, refer to steps 1- 2 in ["Transferring Images"](#).

**2** [Organize Images on Camera]

**3** [Organize Images]

**4**  (Upload)

**5** Select images.

- If ImageBrowser's Browser Window is open when the camera is connected (directly after transferring for instance), open the CameraWindow (menu screen) by clicking the [Canon Camera] icon in the Control Panel of the Browser Window.

### ! IMPORTANT

- Cameras that use the "MOV" data type can play back movies transferred back to the camera if movies were taken with that camera. Refer to the "Data Type" item in "Specifications" near the end of the *Camera User Guide* to see if the camera uses the "MOV" data type. You may not be able to play back movies taken with another camera.
- Only still images compliant with Design rule for Camera File system standards can be transferred to your camera's memory card.
- You may not be able to transfer images back to the camera if they have been edited on a computer, or if the image information has been modified.

# CANON iMAGE GATEWAY

## About CANON iMAGE GATEWAY (for U.S.A. customers only)

CANON iMAGE GATEWAY is an online photo service for the purchasers of this product. Registering online allows you to use the various services.

### ! IMPORTANT

- Internet access is required to use CANON iMAGE GATEWAY (You must already have an account with an Internet service provider (ISP), browser software installed and an Internet connection).
- See the homepage for information regarding browser versions (Safari, etc.) and settings to best connect to CANON iMAGE GATEWAY online photo services.
- Any ISP account charges and access fees must be paid separately.

## Registering

First, register as a CANON iMAGE GATEWAY member.

Register



CANON  
**iMAGE**  
GATEWAY



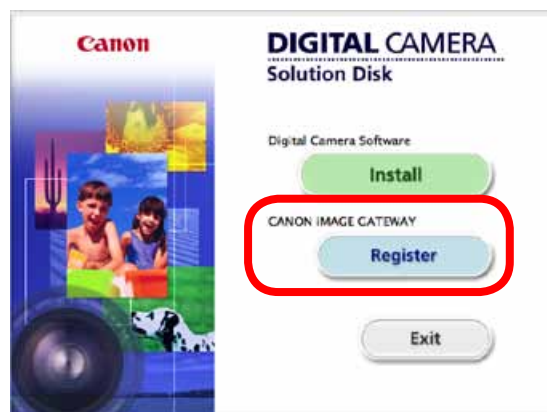
### Procedures

1



[CANON iMAGE GATEWAY] and [Register/Add Product].

- You can register online using the supplied CD-ROM. To do this, in the installer panel, click [Register] underneath CANON iMAGE GATEWAY.




## Available Services

CANON iMAGE GATEWAY offers a variety of convenient and useful services.



### Procedures

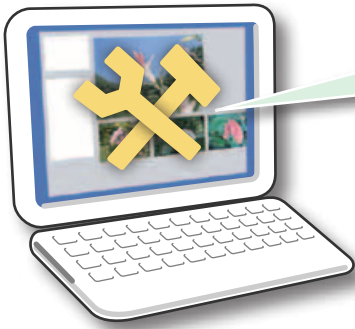
- 
**[CANON iMAGE GATEWAY]**
  - ▶ [Register/Add Product]
  - ▶ [Top Page]
  - ▶ [Upload Images]
  - ▶ [View Online Photo Album]
  - ▶ [Download My Camera Contents]

Select the desired item from the following and make settings.

# Preference Settings

## Customizing ImageBrowser

You can configure ImageBrowser to operate according to your preferences.



- Overall coloring, such as window appearances
- Processing methods for images shot with the camera on end
- Categories of shooting information displayed
- Show/hide messages
- Print settings
- Registering applications



### Procedures

1



[ImageBrowser] and [Preferences].



# List of Available Functions

## CameraWindow Functions

Function Names		Description of Function
Import Images from Camera	<a href="#">Import Untransferred Images</a>	Only transfers images from the camera that have not yet been transferred.
	<a href="#">Select Images to Import</a>	Only transfers chosen images from the camera.
	<a href="#">Import All Images</a>	Transfers all images from the camera.
Organize Images on Camera	<a href="#">Organize Images</a>	Protect, rotate, and delete images on the camera. Also transfers images back to the camera from your computer.
Upload Images from Camera	<a href="#">Upload Movies to YouTube</a>	Uploads movies on the camera to YouTube.
Camera Settings	<a href="#">Set Start-up Image</a>	Sets the camera start-up screen.
	<a href="#">Set Sounds</a>	Sets camera sound effects (start-up sound, shutter sound, operation sounds, self-timer sound).
	<a href="#">Set Theme</a>	Sets the camera start-up screen and sound effects in My Camera Settings.
Preferences	<a href="#">General (General/Connected Camera)</a>	Sets the camera owner name, and start-up screen when CameraWindow starts.
	<a href="#">Import (Auto Import/Folder Settings/After Import)</a>	Sets the automatic transfer settings and destination folder.

## ImageBrowser Functions

### Control Panel Functions

Function Names		Description of Function
Canon Camera	<a href="#">When a Camera is Connected</a>	Connects to the camera to open CameraWindow (menu screen), and use CameraWindow functions.
	<a href="#">When a Memory Card Reader is Connected</a>	Transfers images from a memory card. You can also select images on the memory card and print them.
<a href="#">View Image</a>		Displays the selected image or movie in the Viewer Window.
<a href="#">SlideShow</a>		Starts a slide show of the selected images. Click the [View] menu and select [Slide Show Options] to set the slide show settings.
CANON iMAGE GATEWAY	<a href="#">Register/Add Product</a>	Connects to CANON iMAGE GATEWAY and opens the registration page.
	<a href="#">Top Page</a>	Connects to CANON iMAGE GATEWAY and goes to the top of the page.
	<a href="#">Upload Images</a>	Connects to CANON iMAGE GATEWAY and uploads images.
	<a href="#">View Online Photo Album</a>	Connects to CANON iMAGE GATEWAY and displays albums created.
	<a href="#">Download My Camera Contents</a>	Connects to CANON iMAGE GATEWAY and downloads images and sounds for use with My Camera Settings.

Function Names		Description of Function
Print & Email	<a href="#">Photo Print</a>	Prints one image per page. You can print “photos” easily.
	<a href="#">Index Print</a>	Lines up small versions of the images in rows and prints.
	<a href="#">Layout Print</a>	Allows you to freely arrange multiple images on a single page and print. You can also insert captions and titles.
	<a href="#">Create Image for Email</a>	Converts the selected images to the appropriate size for transmission by e-mail. You can also use it to automatically start an e-mail program after conversion.
Send to Trash		Sends the selected images or folders to the Trash.

## Functions Selected from Menus

Function Names	Menu	Description of Function
Search Images	[File] menu, <a href="#">[Search]</a>	Searches for images based on such criteria as Star Ratings, dates, keywords or captions.
Export Images	[File] menu, [Export Image]	
	<a href="#">Edit and Save Image</a>	Allows you to change the file type or size and export the file.
	<a href="#">Export Shooting Properties</a>	Allows you to export the shooting properties as a text file.
	<a href="#">Export as a Screensaver</a>	Exports the image as a screen saver file.
Organize Images	<a href="#">Export an Image as Wallpaper</a>	Exports the image as a wallpaper file.
	[File] menu, [Organize Image], <a href="#">[Sort Images]</a>	Sorts images according to criteria such as the shooting date or Star Rating and saves them into a specified folder.
Convert RAW Images	[File] menu, [Organize Image], <a href="#">[Rename]</a>	Changes the files names of multiple images in a single pass.
	[File] menu, <a href="#">[Process RAW Images by Digital Photo Professional]</a>	Converts RAW images into JPEG or TIFF images. You can adjust the image brightness, contrast and color balance among other attributes during conversion.
Writing to Memory Card	[File] menu, [Rewrite Image to Memory Card]	Transfers images from the computer to the memory card.
Merge Panoramas	[Edit] menu, <a href="#">[PhotoStitch]</a>	Merges multiple images and creates a single large panoramic image .
Edit Movie	[Edit] menu, <a href="#">[Movie Edit]</a>	Edits movies or still images strung together. You can add text as titles, or background music, and apply various effects.
Extract frames from a movie	[Edit] menu, <a href="#">[Extract frames from a movie]</a>	Extracts still images from movies over a specified interval and saves them as image files.
Display Settings	[View] menu, <a href="#">[View Settings]</a>	Hides or shows image information beneath the thumbnail, such as the file name or the shooting date and time.
Sort Images	[View] menu, <a href="#">[Sort]</a>	Arranges image order in the Browser Area according to criteria such as the filename, file modification date, file size or shooting date.

## Supported Image Types

The following is a list of image types supported by ImageBrowser.

### JPEG

Most cameras use this image type. It compresses at very high ratios, taking advantage of the characteristics of the human eye. However, because it is an irreversible compression method (part of the data is lost during compression), if you process and save an image repeatedly using this method, the image may become rougher.

Exif JPEG is an image type that adds information such as shooting data to a JPEG image.

### RAW

This is a proprietary image type provided by Canon. It allows the output of the image pixels from a digital camera without any deterioration in the quality of the image.

Some cameras might not support this image type.

### PICT

This is the standard image type for Macintosh. This image type is supported by most Macintosh software.

### TIFF

This is a relatively popular image type. It is widely supported by non-Macintosh programs (such as Windows).

### BMP (Windows Bitmap)

This image type comes standard with Windows. Most Windows programs support it.

### AVI (.AVI)

Standard Windows movie type. The movie thumbnail and a movie icon show in ImageBrowser's Browser Area.

### MOV (.MOV)

Movie type. The movie thumbnail and a movie icon show in ImageBrowser's Browser Area.

## Uninstalling the Software

The procedures for uninstalling the software are only required when you wish to delete the programs from your computer or when reinstallation is required to fix corrupted files.

### **IMPORTANT**

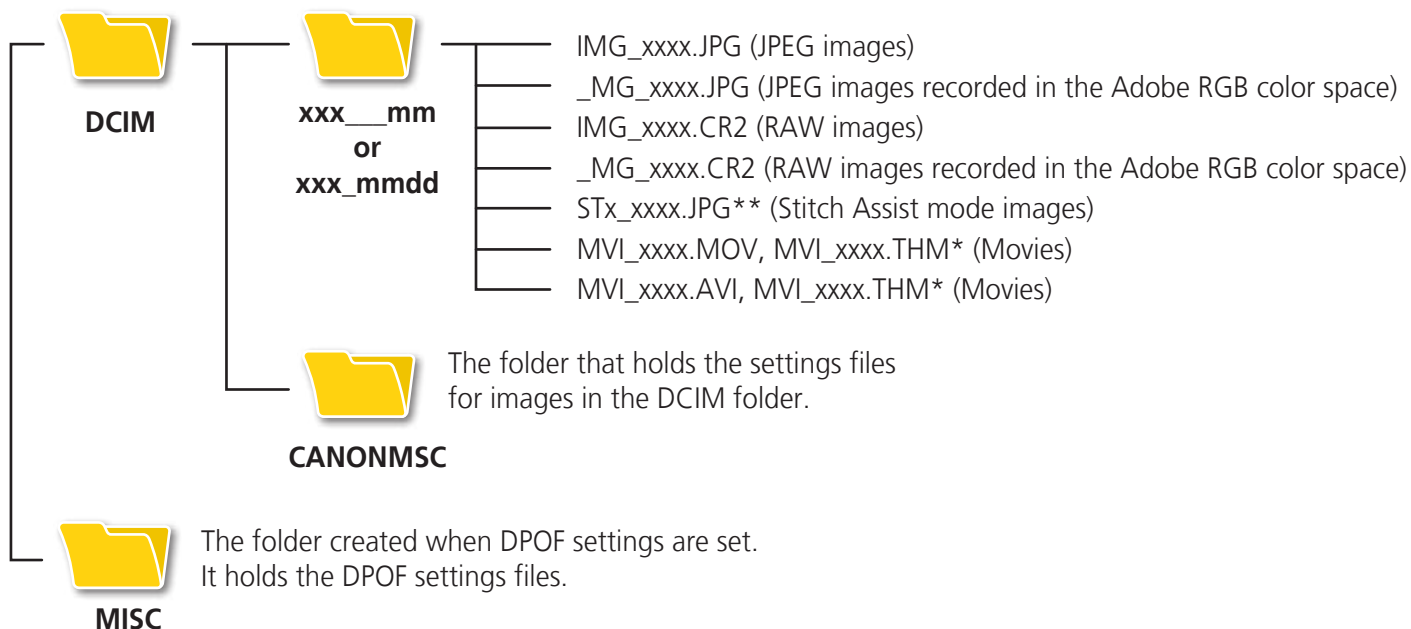
- Computer administrator status is required to perform the following operation.
- Please be careful not to accidentally delete any folders with downloaded images that may be contained within the application folder.

**1** Move all of the application folders from the installation destination folder to the trash.

**2** Empty the trash.

## Memory Card Folder Structure

Images on the memory card are in either the [DCIM] folder's [xxx\_\_mm] folder, or the [xxx\_mmdd] folder (xxx: numbers 100 to 999, mm: shooting month, dd: shooting day).



- \* These files are the thumbnail image files for the camera's index replay mode. If you delete these files, you will be unable to transfer movies to the camera from a computer.
- The "####" in file names represent four-digit numbers.
- \*\* Each successive file shot in Stitch Assist mode is assigned a letter starting from "A," which is inserted as the third digit in the name. i.e. [STA\_0001.JPG], [STB\_0002.JPG], [STC\_0003.JPG]...
- All folders except the "xxx\_\_mm" or "xxx\_mmdd" folders contain image settings files. Do not open or delete them.
- Depending on the camera, some data types cannot be recorded.



# Troubleshooting

Please read this section if you encounter a problem using the software.

## Start by Checking This

Investigate the following points first if you encounter a problem.

### Does your computer satisfy the requirements listed in the System Requirements section?

See “System Requirements” in the *Camera User Guide*.

### Is the camera correctly connected to the computer?

See the *Camera User Guide* for the correct connection procedures. Also check to ensure that you are using the correct cable and that it is securely attached at both ends.

### Are the camera and computer in the correct modes to transfer data?

Some models require the camera to be set to the playback mode to transfer data. See the *Camera User Guide* for details.

### Is the battery sufficiently charged?

Check the battery charge if you are powering the camera with a battery. You are recommended to use an AC adapter (sold separately) to power the camera when it is connected to a computer.

## Problems

### You can't find transferred images.

Refer to [“Changing the Transfer Destination Folder”](#) to confirm where the destination folder is.

## Software Guide Macintosh (ImageBrowser, PhotoStitch)

### Disclaimer

- While every effort has been made to ensure that the information contained in this guide is accurate and complete, no liability can be accepted for any errors or omissions. Canon reserves the right to change the specifications of the hardware and software described herein at any time without prior notice.
- No part of this guide may be reproduced, transmitted, transcribed, stored in a retrieval system, or translated into any language in any form, by any means, without the prior written permission of Canon.
- Canon makes no warranties for damages resulting from corrupted or lost data due to a mistaken operation or malfunction of the camera, the software, memory cards, personal computers, peripheral devices, or use of non-Canon memory cards.

