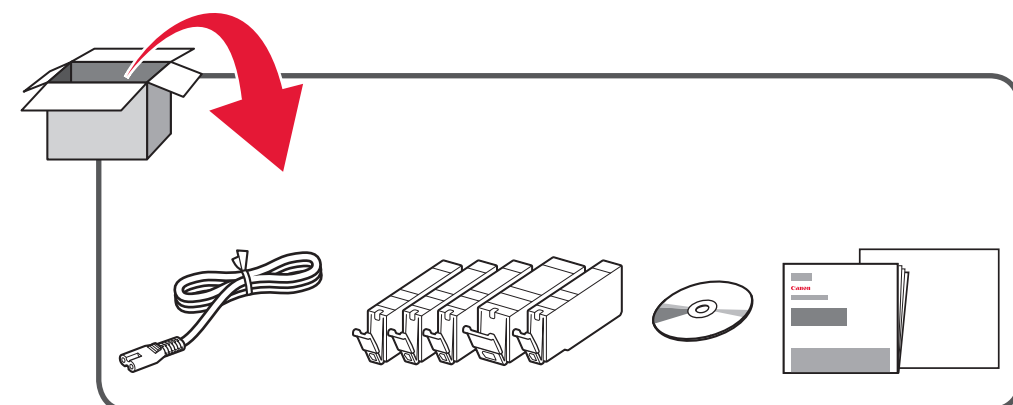
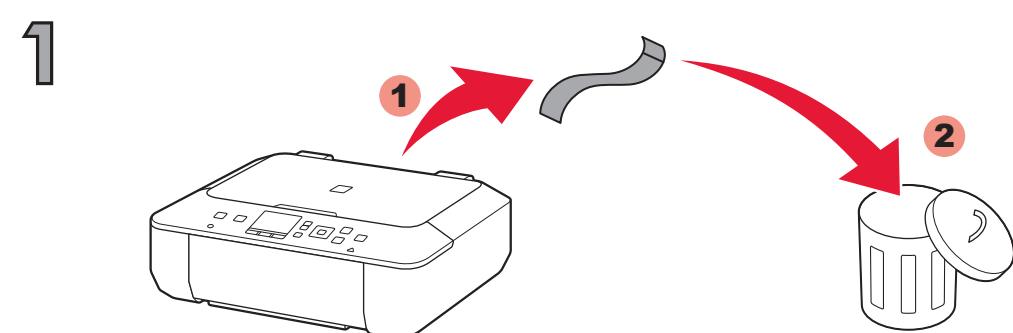


Canon PIXMA MG5540

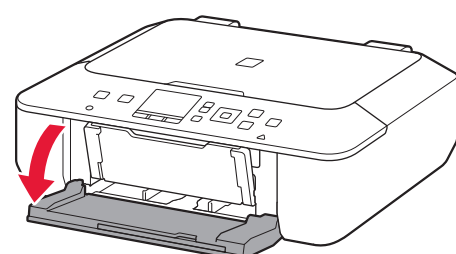
1



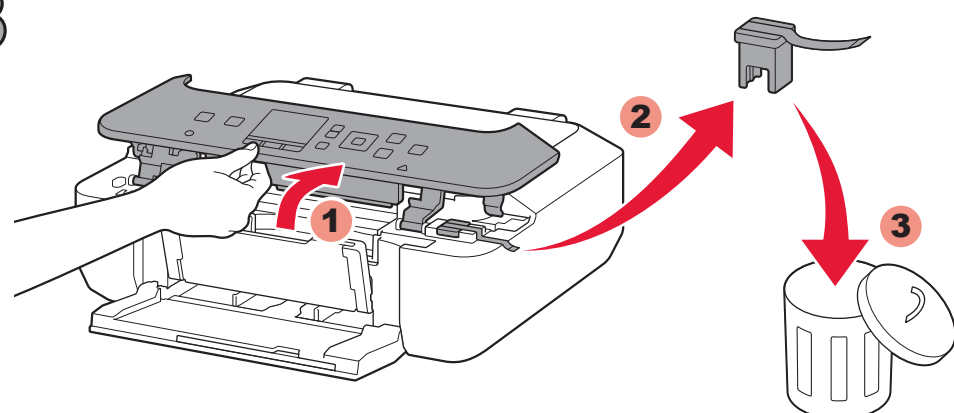
2



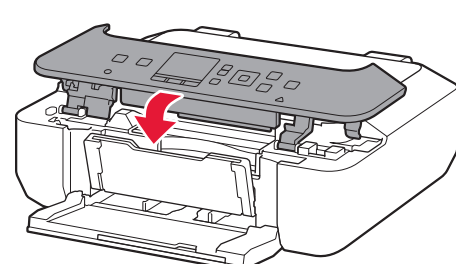
2



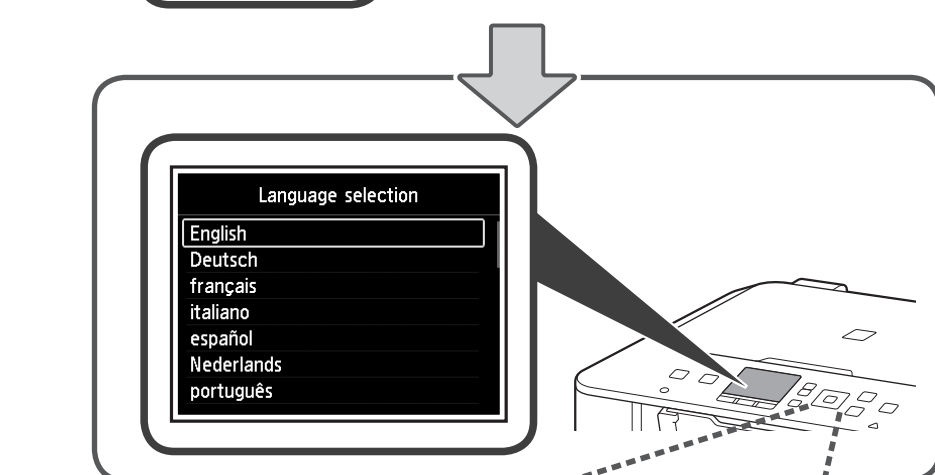
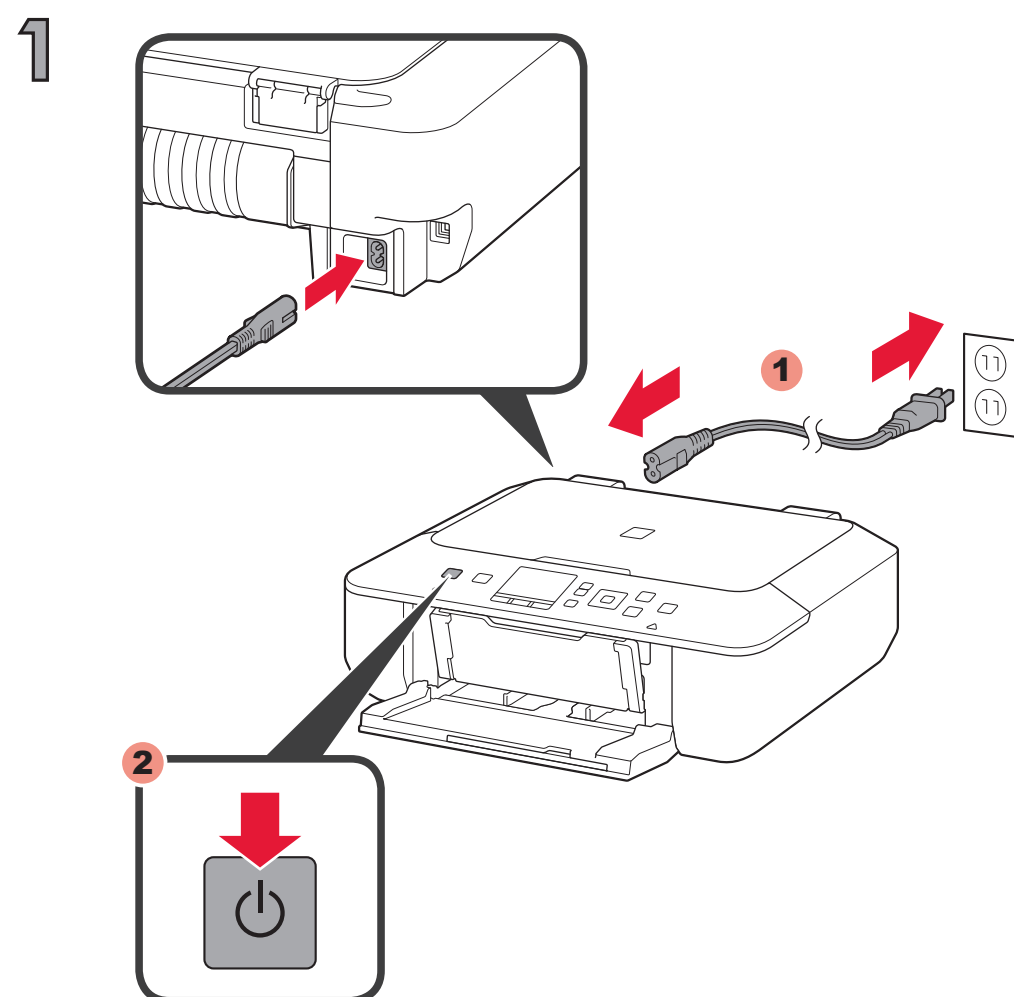
3



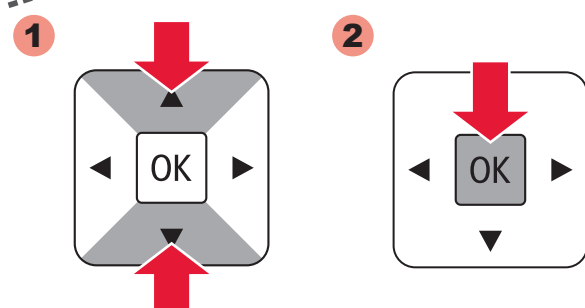
4



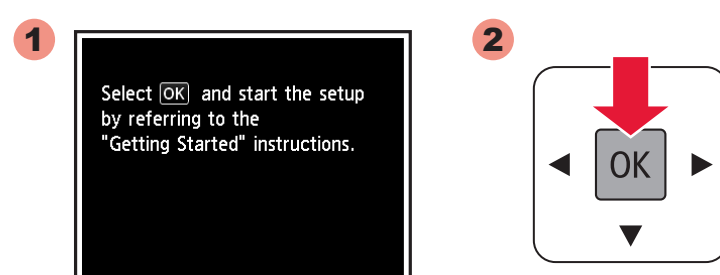
3



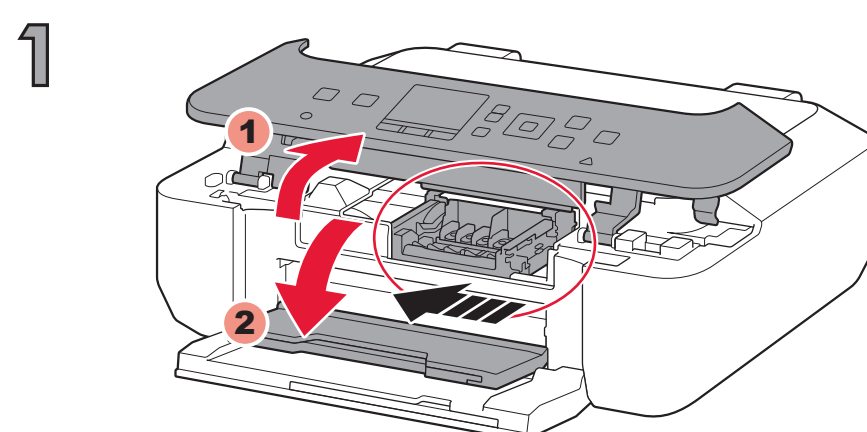
2



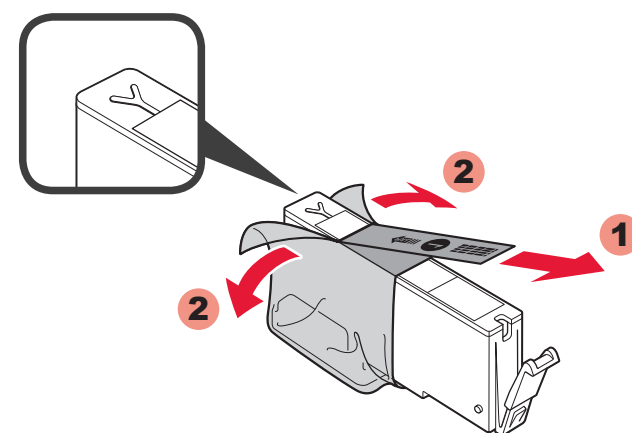
3



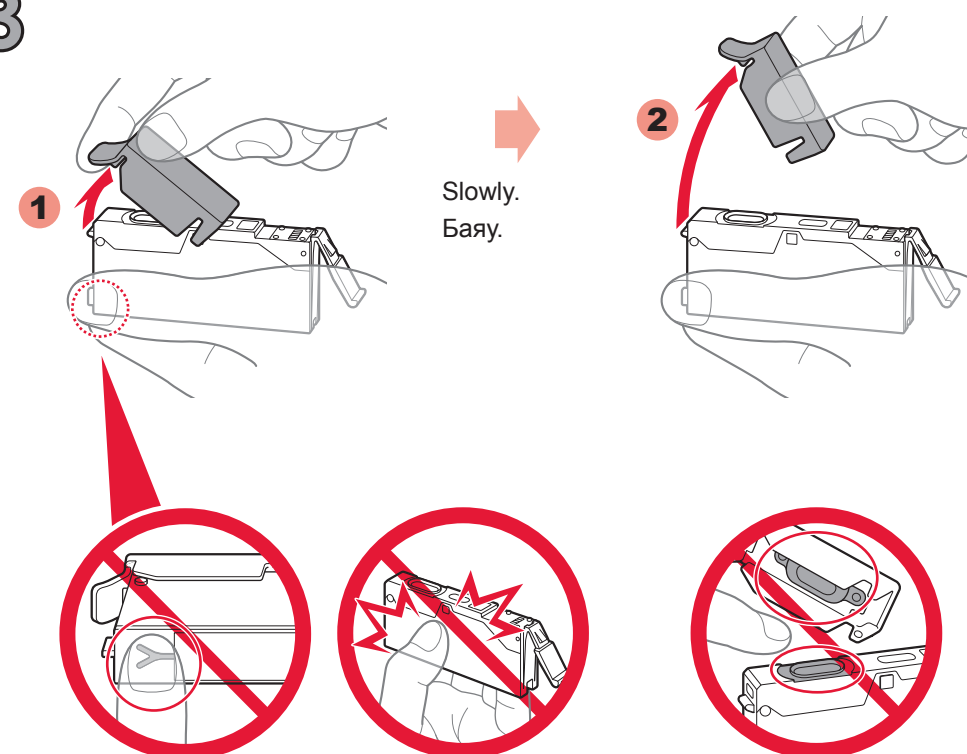
4



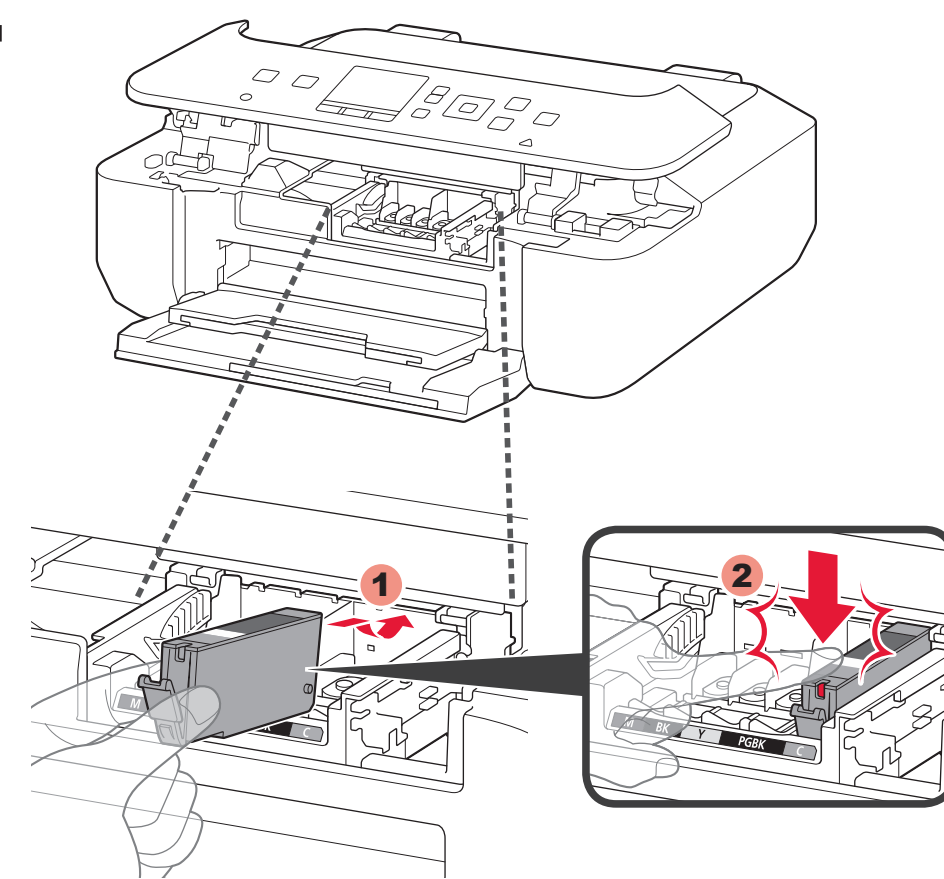
2



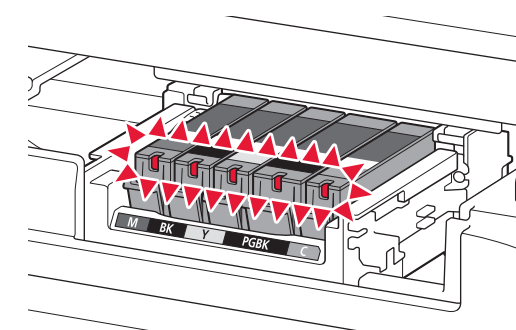
3



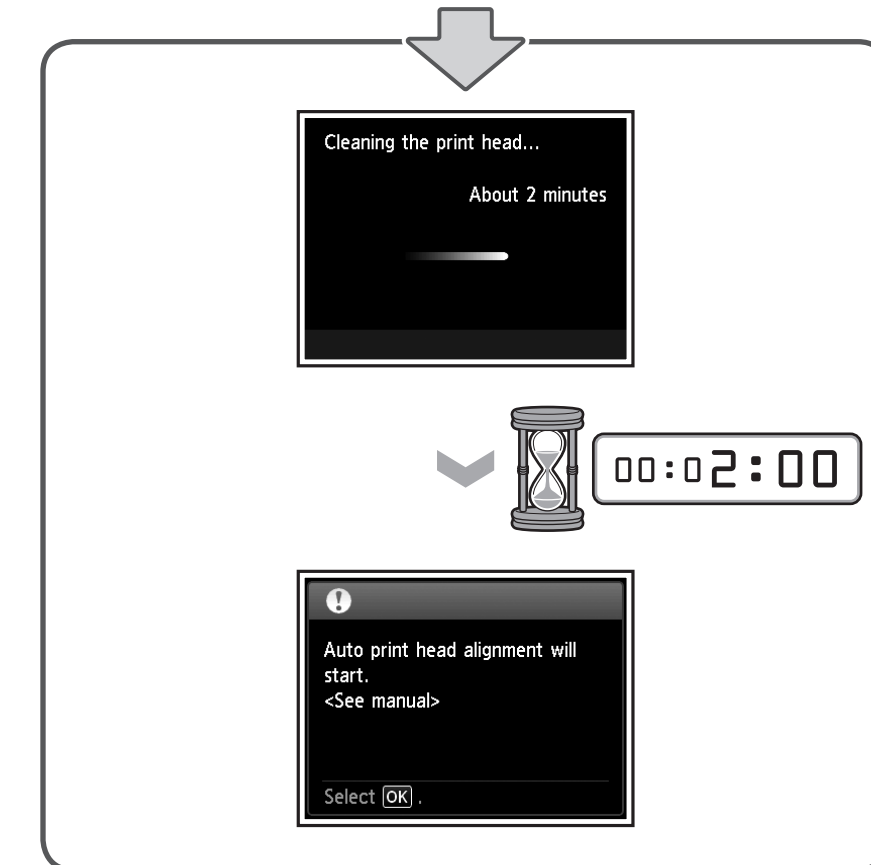
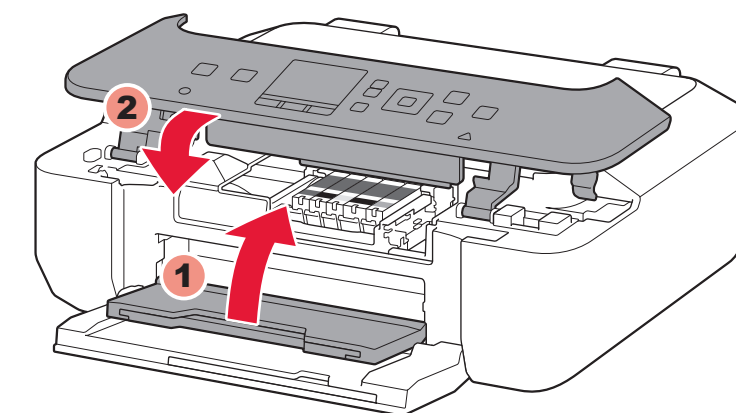
4



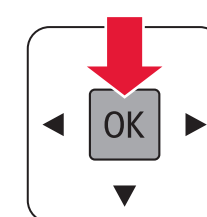
5



6

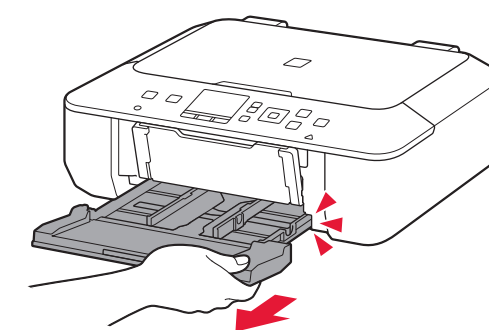


7

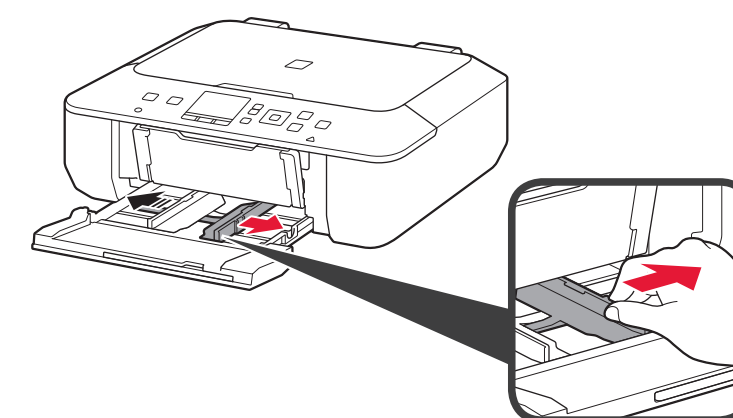


5

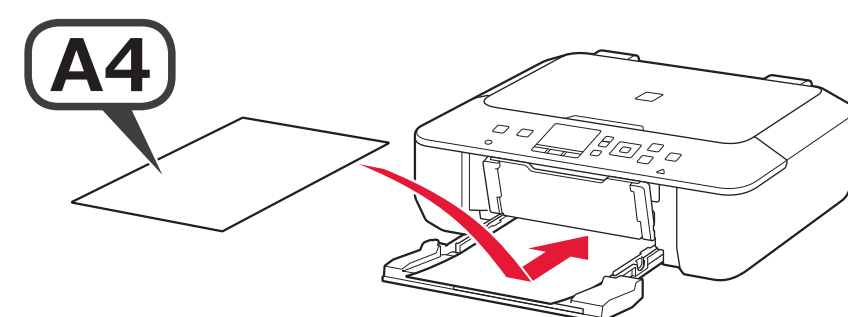
1



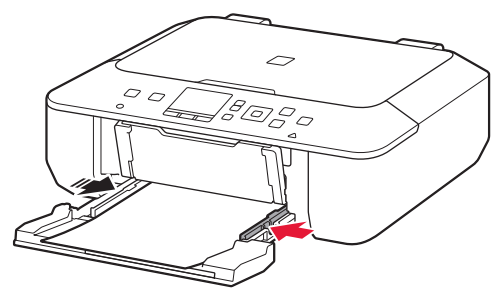
2



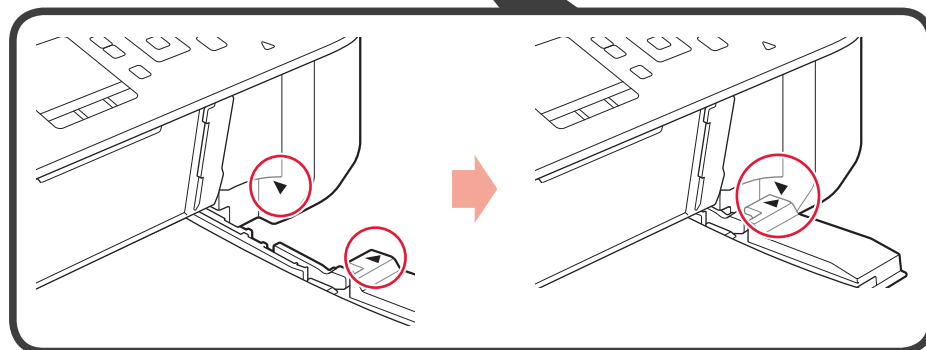
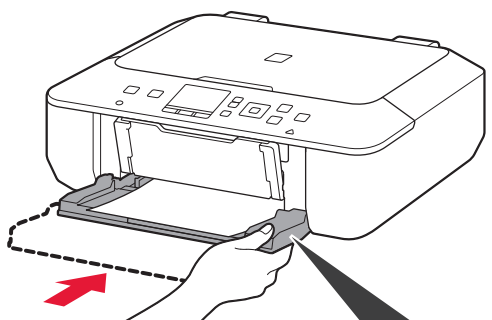
3



4



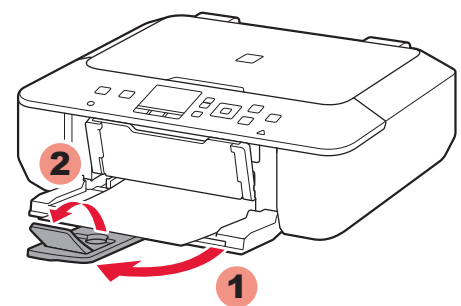
5



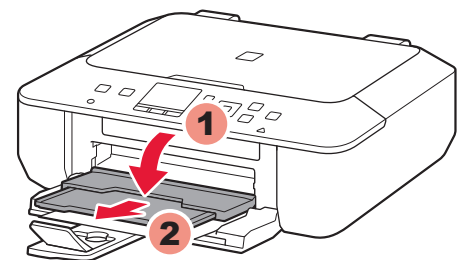
Push the Feeder back until ► and ◄ line up.

Бергішті ► және ◄ тураланбағанша артқа қарай итеріңіз.

6

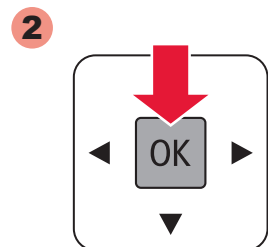
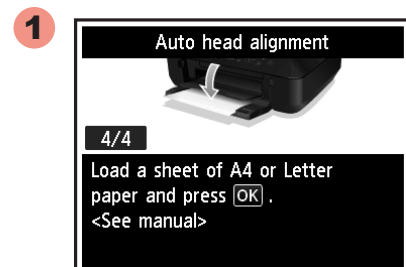


7

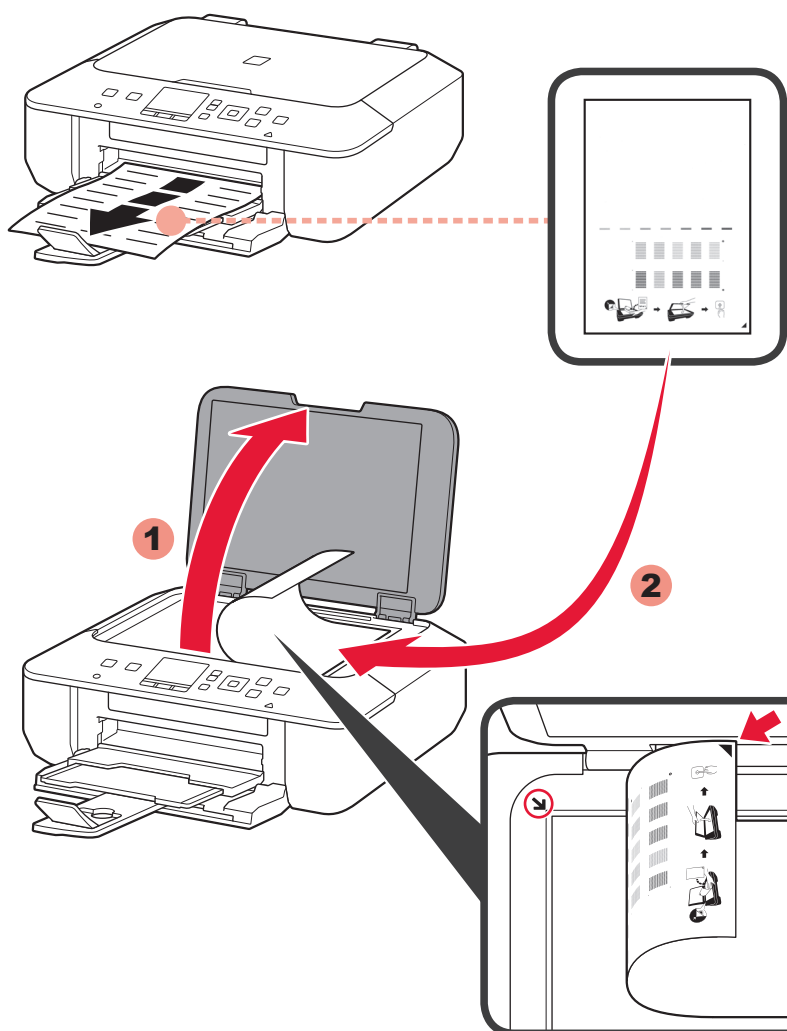


6

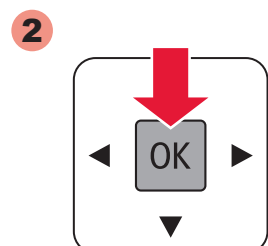
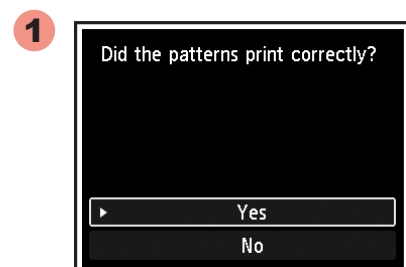
1



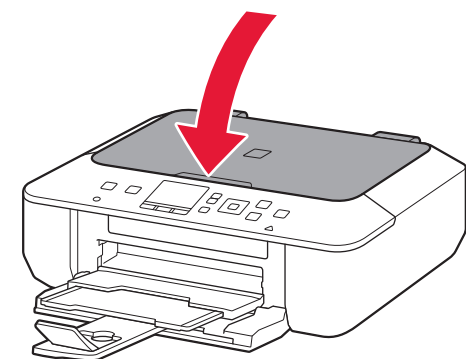
2



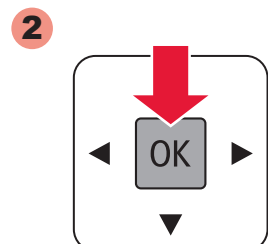
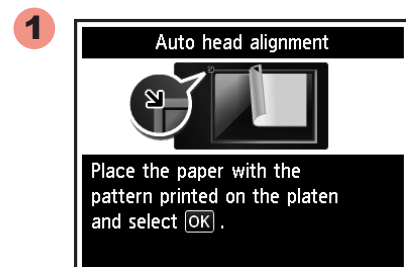
3



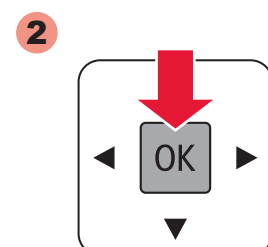
4



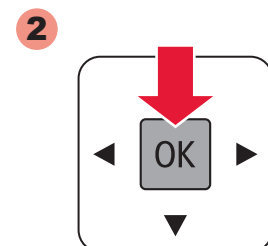
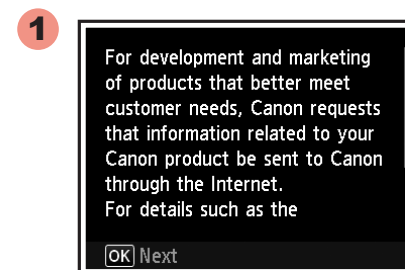
5



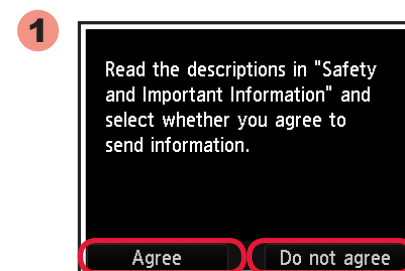
6



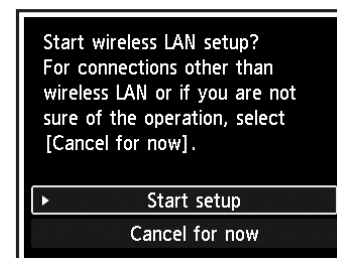
7



8



7



To connect to wireless LAN, select **Start setup** on the screen, then follow the on-screen instruction.

If you do not want to connect the machine to wireless LAN, select **Cancel for now**, then proceed to **8**.

* You can select USB connection by following the instruction shown on the computer screen in **8**.

Сымсыз LAN желісіне қосылу үшін, экрандағы **<Start setup> (Орнатуды бастау)** опциясын таңдап, экрандағы нұсқауды орындаңыз.

Егер құрылғыны сымсыз LAN желісіне қосуды қаламасаңыз, **<Cancel for now> (Қазір үшін болдырмау)** опциясын таңдап, одан кейін **8** тармағына өтіңіз.

* USB қосылымын **8** ішіндегі компьютер экранында көрсетілген нұсқауды орындау арқылы таңдауға болады.

8

