



Unpack the Machine

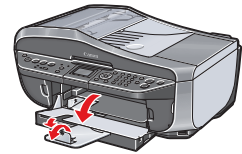
- Please confirm the included items against the illustration printed on the lid of the packing box. A USB cable is necessary to connect the machine with your computer.

Important When cleaning the exterior of the machine, use a soft cloth to wipe it gently. For details, refer to "Cleaning Your Machine" in the Quick Start Guide.

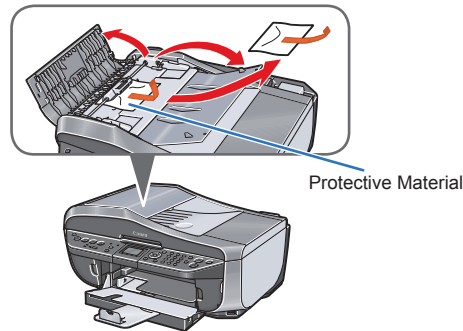
1 Prepare the Machine

1 Place the machine on a flat and horizontal surface, and do not place any objects in front of the machine. Remove all the shipping tapes on the outside of the machine.

Then open the Paper Output Tray and the Output Tray Extension.



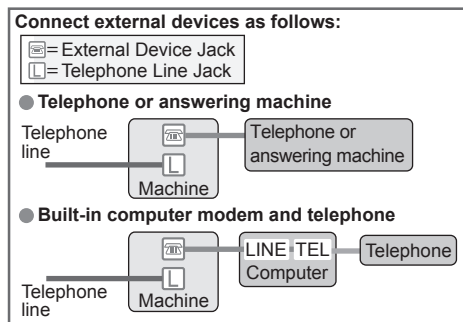
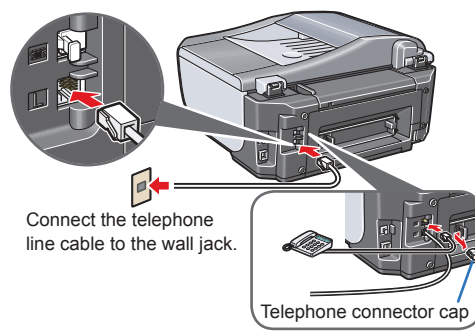
2 Remove the protective material in the ADF (Auto Document Feeder).



Caution Before turning on the machine, remove all of the shipping tapes.

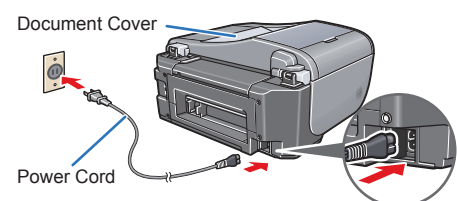
3 Connect the telephone line and any necessary external device. You can connect an external device (telephone or answering machine) if necessary.

Remove the Telephone connector cap to connect the external device.



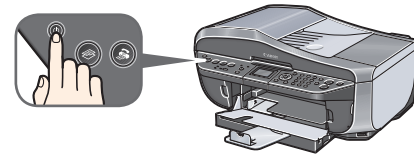
Important Be sure to use the bundled telephone line cable.

4 Plug the power cord in the back of the machine and connect the other end to the wall outlet.



Important Make sure that the Document Cover is closed. Do NOT connect the USB cable at this stage.

5 Press the ON/OFF button to turn on the machine. The machine will initialize. Wait until the Power lamp stops flashing and remains lit green.



6 Press the up or down button on the Operation Panel to select the language for the LCD, then press the OK button.



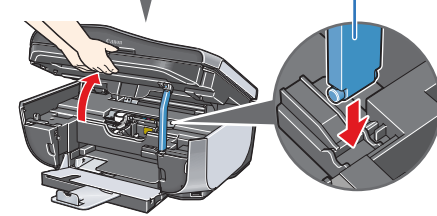
(1) Press the up or down button to select the language.

(2) Press the OK button.

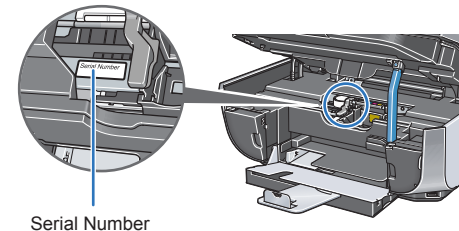
Important If an unintended language is displayed on the LCD, press the Back button on the Operation Panel to return to the Language selection screen.

If the message "Install the print head and set the ink tank." appears, go to 7.

7 Lift the Scanning Unit (Printer Cover) with both hands, and set the Scanning Unit Support. The Print Head Holder automatically moves to the center.

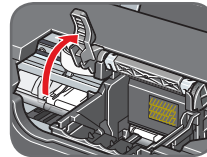


8 Write down the serial number located inside the machine. You will need this to register your product.

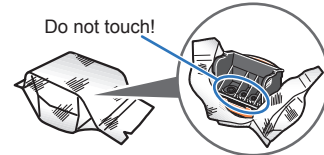


2 Install the Print Head

1 Firmly raise the Print Head Lock Lever until it stops.

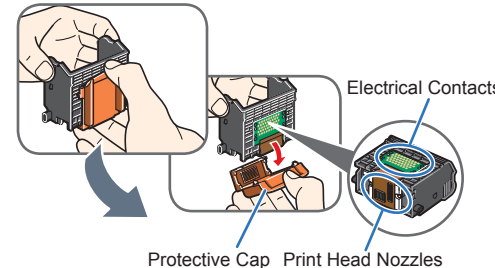


2 Remove the Print Head from its package.



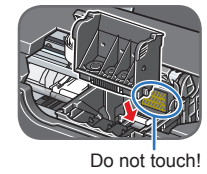
Caution There may be some transparent or light blue ink on the inside of the bag the print head comes in, or the inside of the protective cap - this has no effect on print quality. Be careful not to get ink on yourself when handling these items.

3 Remove the orange protective cap from the Print Head and discard it.

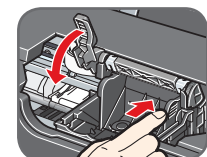


Important Do not touch the print head nozzles and the electrical contacts.

4 Insert the Print Head.

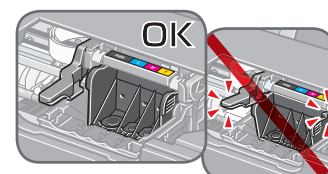


5 Push the Print Head to hold it in place, and lower the Print Head Lock Lever carefully.



Important If the Scanning Unit (Printer Cover) is left open for more than 10 minutes, the Print Head Holder moves to the right. Close and reopen the Scanning Unit (Printer Cover) to return the Holder to the center.

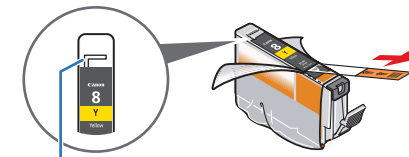
6 Make sure that the Print Head is installed correctly.



Important Be sure that the Print Head Lock Lever is pressed all the way down, and that the Print Head is locked firmly in place. If the Print Head is tilted forward, or the Print Head Lock Lever is pressed only halfway down, raise the Print Head Lock Lever and remove the Print Head, and then reinstall the Print Head.

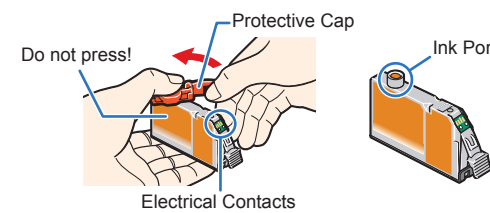
3 Install the Ink Tanks

1 Pull the orange tape in the direction of the arrow to peel off the protective film and remove the film completely.



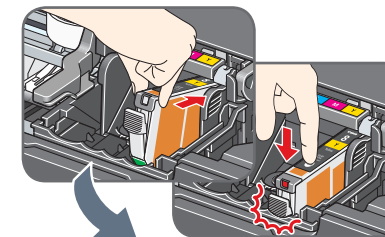
If the air hole is blocked with the remaining film, ink may leak out or may not eject properly.

2 Twist off and discard the orange protective cap located on the bottom of the ink tank.

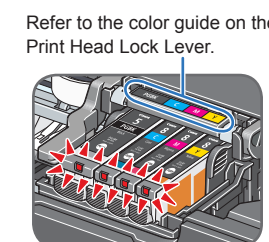


Important Do not touch the electrical contacts. Do not touch the ink port.

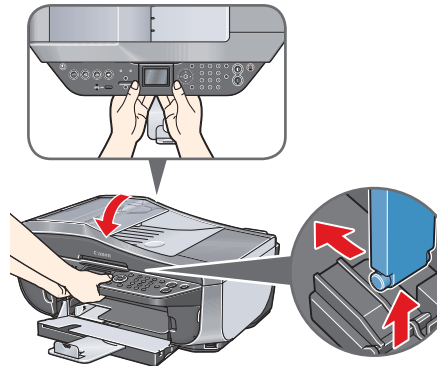
3 Insert the ink tank into the right-hand slot and press the mark on the ink tank until it clicks into place.



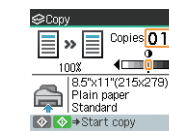
4 Make sure the ink lamp lights red.



5 Lift the Scanning Unit (Printer Cover) slightly to set the Scanning Unit Support back to its original position, and then gently close the Scanning Unit (Printer Cover).



Important Once you have installed the Print head and ink tanks, wait about two minutes until the message "Perform head alignment in the case colors or lines are off." appears, then press the OK button. The Copy standby screen appears on the LCD.



Hardware setup is now complete. Next, turn over and install the software.

For fax users

To use a fax, you need to set the telephone line type setting properly on the machine.

If you are unsure of your telephone line type, contact your telephone company.

Select the receive mode according to your needs.

When you have a dedicated telephone line for fax use only:

→ FAX only mode

When you are using a single telephone line for faxes and voice calls:

If you receive mainly voice calls and sometimes faxes → TEL priority mode

→ FAX priority mode

If you receive mainly faxes and sometimes voice calls:

→ FAX priority mode

When you subscribe to a ring pattern detection service provided by your telephone company:

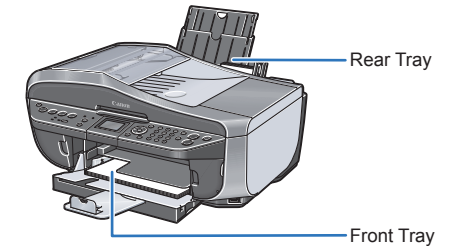
→ DRPD

For details on how to confirm and change the settings, refer to the Quick Start Guide.

Loading Paper

This machine offers two paper sources to load printing paper; the Rear Tray, found at the top of the machine, and the Front Tray, found at the front of the machine.

- Note At purchase, the machine is set to feed from the Front Tray. You can load A4, Letter, or B5-sized plain paper in the Front Tray. When using any other type of paper, load it in the Rear Tray.

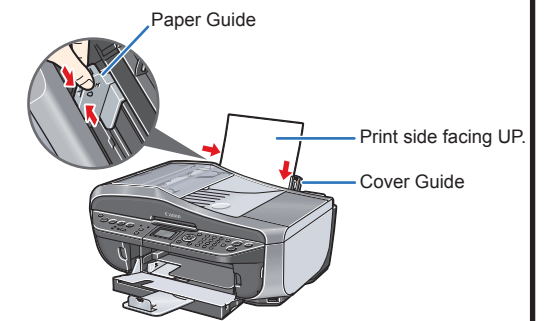


Loading Paper in the Rear Tray

1 Load the paper in the Rear Tray with the print side facing UP.

2 Align the paper stack against the Cover Guide on the right side of the Paper Support.

3 Slide the Paper Guide against the left side of the paper stack.



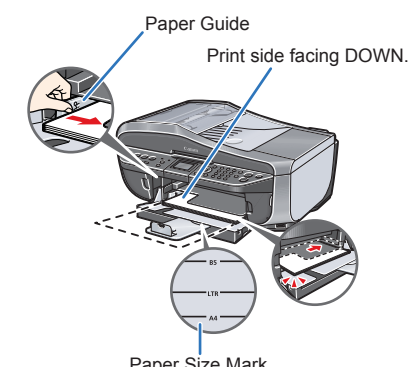
Loading Paper in the Front Tray

1 Load the paper in the Front Tray with the print side facing DOWN and the leading edge to the far side.

2 Align the paper stack against the right edge of the Front Tray.

3 Align the near and the left edges of the paper with the Paper Size Mark.

4 Slide the Paper Guide against the left side of the loaded paper stack.



Note For details, refer to the Quick Start Guide.

Windows® Software Installation

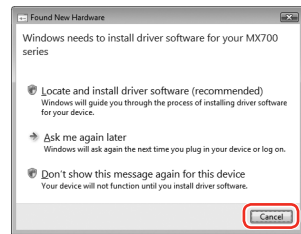


- Note**
- The screens below refer to Windows Vista™ operating system Ultimate Edition (hereafter referred to as "Windows Vista") installation. Screens may vary depending on the operating system you are using.
 - Log into a user account with the administrator privilege.
 - Before installing the software, disable all anti-virus programs and automatically loading programs.
 - A message asking for your confirmation to restart your computer may appear during the installation process. If this message is displayed, follow the on-screen instructions and click **OK**. The installation resumes from where it left off when your computer has been restarted.

- 1** Be sure to **TURN THE MACHINE OFF** before continuing.
- Press the **ON/OFF** button.
 - Make sure that the **Power** lamp stops flashing.

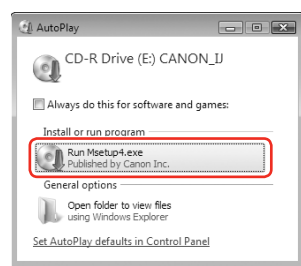
- 2** Turn the computer on and start Windows.

- Important**
If the **Found New Hardware** or **Found New Hardware Wizard** screen appears automatically, remove the USB cable connected to your computer. Click **Cancel** to quit the screen. In Windows Vista, the screen may close automatically when the USB cable is unplugged. Then turn off the machine and proceed from step **3** to install the software.

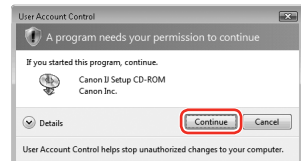


- 3** Insert the Setup CD-ROM. The setup program should run automatically.
- In Windows Vista, go to Step **4**. In Windows XP and Windows 2000, go to Step **6**.

- 4** If the **AutoPlay** screen appears, click **Run Msetup4.exe**.



- 5** If the **User Account Control** screen appears, click **Continue**. If the same screen reappears in subsequent steps, click **Continue**.



- 6** When the main menu appears, click **Easy Install**. The MP Drivers, On-screen Manuals, and application software are installed automatically.



- Note**
If you want to select particular items to install, click **Custom Install** and follow the on-screen instructions to proceed with the installation.

- 7** When the list of applications to install appears, confirm the contents, then click **Install**.

- Note**
Move the cursor over items to display explanations of each application.

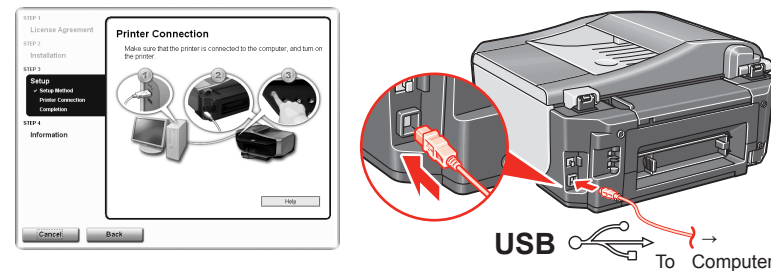
- 8** Read the License Agreement carefully and click **Yes**. The software installation screen may appear during the installation process. Follow the on-screen instructions to install the software.

- 9** When the **Setup Method** screen appears, select **Use the printer via USB**, then click **Next**.



- 10** When the **Printer Connection** screen appears, connect one end of the USB cable to the computer, the other to the machine, then **TURN THE MACHINE ON**. The MP Drivers will begin identifying the printer port being used.

- Important**
If you cannot go to the next procedure after three minutes, refer to "Troubleshooting" instructions in the *Quick Start Guide*.



- 11** When the **Setup Complete** screen appears, click **Next**.



- 12** When the **User Registration** screen appears, click **Next**.
- Note**
To register later, click **Cancel** and go to Step **13**. After software installation is complete, double-click on the desktop.

Follow on-screen instructions to register your product. You will need your product serial number, which is located on the inside of the machine. See Step 1- **8** on the front page.

- 13** When the **PIXMA Extended Survey Program** screen appears, confirm the message. We would appreciate it if you would take part in this program regarding the use of Canon printers. If you can agree, click **Agree**.

- 14** When the **Installation completed successfully** screen appears, click **Exit**.
If **Restart** is displayed, make sure that the **Restart the system now (recommended)** check box is selected, then click **Restart**.

- Note**
If straight lines are misaligned or print quality is not satisfactory after installing the MP Drivers, you may need to align the Print Head. Refer to "Aligning the Print Head" in the *Quick Start Guide*.

Software installation is now complete.

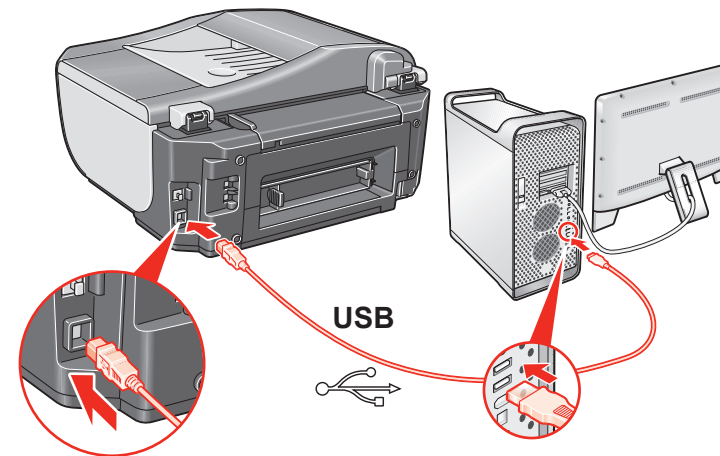
Macintosh® Software Installation



- Note**
- Since Mac® OS 9, Mac OS X Classic environments, or Mac OS X v.10.2.7 or earlier are not supported, do not connect the machine to these.
 - The screens below refer to Mac OS X v.10.4.x installation. Screens may vary depending on the operating system you are using.
 - Log on as an Administrator.
 - Before installing the software, disable all anti-virus programs and automatically loading programs.

- 1** Connect one end of the USB cable to the computer and the other to the machine.

- Note**
Make sure the machine is turned on.



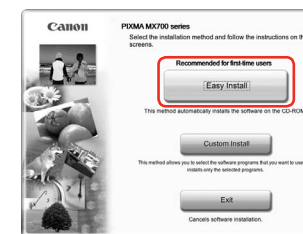
- 2** Turn on your Mac and insert the Setup CD-ROM.

- Note**
If the CD-ROM folder does not open automatically, double-click the CD-ROM icon on the desktop.

- 3** Double-click the **Setup** icon.

- 4** When the **Authenticate** screen appears, enter your administrator name and password. Click **OK**. If you do not know your administrator name or password, click , then follow the on-screen instructions.

- 5** When the main menu appears, click **Easy Install**. The MP Drivers, On-screen Manuals, and application software are installed automatically.



- Note**
If you want to select particular items to install, click **Custom Install** and follow the on-screen instructions to proceed with the installation.

- 6** When the list of applications to install appears, confirm the contents, then click **Install**.

- Note**
Move the cursor over items to display explanations of each application.

- 7** Read the License Agreement carefully and click **Yes**. The software installation screen may appear during the installation process. Follow the on-screen instructions to install the software.

- 8** When the **Setup Complete** screen appears, click **Next**.

- 9** When the **User Registration** screen appears, click **Next**.

- Note**
To register later, click **Cancel** and go to Step **10**. After software installation is complete, double-click on the desktop.

Follow on-screen instructions to register your product. You will need your product serial number, which is located on the inside of the machine. See Step 1- **8** on the front page.

- 10** When the **Installation completed successfully** screen appears, click **Restart**.

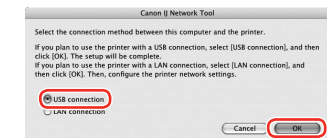


The system is restarted automatically.

- When using Mac OS X v.10.2.8 to v.10.3.3:**
Restarting the computer while connected to the machine may cause the machine not to be detected. To resolve this, either unplug the USB cable then plug it back in again, or turn the machine off then back on again.

- Note**
- When using Mac OS X v.10.2.8 to v.10.3.x, before using the Operation Panel on the machine to save originals scanned from the Platen Glass or the ADF to the computer, it is necessary to select **MP Navigator EX** as the launch application on Image Capture under **Applications** folder. For details, refer to "Scanning Images" in the *User's Guide* on-screen manual.
 - If straight lines are misaligned or print quality is not satisfactory after installing the MP Drivers, you may need to align the Print Head. Refer to "Aligning the Print Head" in the *Quick Start Guide*.
 - XXX FAX** (where "XXX" is your machine's name) is shown in the **Printer Name** list (Product list in Mac OS X v.10.2.8 to v.10.3.x), but you cannot add **XXX FAX**. You can fax the document with the current print settings applied to it if your computer is equipped with an internal modem. You cannot send faxes from your computer via the machine.

- 11** When the **Canon IJ Network Tool** screen appears, select **USB connection**, then click **OK**.



Software installation is now complete.