

SELPHY CP1200

COMPACT PHOTO PRINTER

Printer User Guide

ENGLISH

- Make sure you read this guide, including the “Safety Precautions” section, before using the printer.
- Reading this guide will help you learn to use the printer properly.
- Store this guide safely so that you can use it in the future.
- Click the buttons in the lower right to access other pages.
 - ▶ : Next page
 - ◀ : Previous page
 - 🔗 : Page before you clicked a link
- To jump to the beginning of a chapter, click the chapter title at right.
From chapter title pages, you can access topics by clicking their titles.

Cover

Contents

Part Names

Basic Operations

Print Settings

Printing via Wi-Fi

Printing via USB Cable

Troubleshooting

Appendix

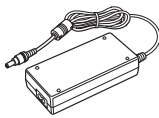


Package Contents

Before use, make sure the following items are included in the package.
If anything is missing, contact the retailer where you purchased the printer.



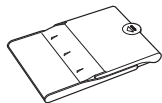
□ SELPHY Printer



□ Compact Power Adapter
CA-CP200 B



□ Power Cord



□ Paper Cassette
PCP-CP400

- Printed matter is also included.

Ink and Paper (Sold Separately)

Before use, purchase a Color Ink / Paper Set.

Color Ink / Paper Set			Necessary Paper Cassette
Product Name	Paper Size	Number of Possible Prints	
Color Ink / Paper Set KP-36IP (Postcard)	Postcard Size	36	Paper Cassette PCP-CP400 (included with SELPHY)
Color Ink / Paper Set RP-54 (Photo Paper)		54	
Color Ink / Paper Set RP-108 (Photo Paper)		108	
Color Ink / Paper Set RP-1080V (Photo Paper)		1080	
Color Ink / Paper Set KP-108IN (Photo Paper)		108	
Color Ink / Paper Set KL-36IP	L Size	36	Paper Cassette PCPL-CP400*
Color Ink / Paper Set KL-36IP 3-pack		108	
Color Ink / Paper Set KC-36IP	Card Size	36	Paper Cassette PCC-CP400*
Color Ink / Label Set KC-18IF (Full-Page Label)		18	
Color Ink / Label Set KC-18IL (8 Labels per Page)		18	
Color Ink / Label Set KC-18IS (Square Labels)		18	

* Purchase with the Color Ink / Paper Set.
Accessory availability varies by region.

Cover

Contents

Part Names

Basic Operations

Print Settings

Printing via Wi-Fi

Printing via USB Cable

Troubleshooting

Appendix



Before Use

- Images printed with this product are to be used for personal enjoyment. Unauthorized printing of copyrighted material is prohibited.
- The printer warranty is valid only in the country or area of purchase. In case of printer problems while abroad, return to the area of purchase before contacting a Canon Customer Support Help Desk.
- Although the LCD monitor is produced under extremely high-precision manufacturing conditions and more than 99.99% of the pixels meet design specifications, in rare cases some pixels may be defective or may appear as red or black dots. This does not constitute a malfunction or affect printed images.
- The LCD monitor may be covered with a thin plastic film for protection against scratches during shipment. If so, remove the film before use.

Conventions in This Guide

- In this guide, the printer is referred to as “SELPHY” or “the printer”.
- Icons are used in this guide to represent buttons on SELPHY. Refer to “Controls” (📖6) for details.
- On-screen text or icons are shown in square brackets, as in [].
- ⓘ: Important information you should know
- 💡: Notes and tips for expert use
- 📖xx: Pages with related information (In this example, “xx” represents a page number.)
- Instructions in this guide apply to the printer under default settings.
- For convenience, all supported memory cards are simply referred to as “memory card”.

Safety Precautions

- Before using the product, please ensure that you read the safety precautions described below. Always ensure that the product is used correctly.
- The safety precautions noted on the following pages are intended to prevent injuries to yourself and other persons, or damage to the equipment.
- Be sure to also check the guides included with any separately sold accessories you use.



Warning

Denotes the possibility of serious injury or death.

- **Store this equipment out of the reach of children and infants.**
Mistakenly putting the power cord around a child's neck could result in asphyxiation.
- **Use only recommended power sources.**
- **Do not attempt to disassemble, alter, or apply heat to the product.**
- **Avoid dropping or subjecting the product to severe impacts.**
- **To avoid the risk of injury, do not touch the interior of the product if it has been dropped or otherwise damaged.**
- **Stop using the product immediately if it emits smoke, a strange smell, or otherwise behaves abnormally.**
- **Do not use organic solvents such as alcohol, benzine, or thinner to clean the product.**
- **Do not let the product come into contact with water (e.g. sea water) or other liquids.**
- **Do not allow liquids or foreign objects to enter the product.**
This could result in electrical shock or fire.
If liquid comes into contact with the product, unplug it from the outlet and consult your retailer or a Canon Customer Support Help Desk.
- **Do not touch the printer or the power plug during thunderstorms.**
This could result in electrical shock or fire. Immediately stop using the equipment and distance yourself from it.

Cover

Contents

Part Names

Basic Operations

Print Settings

Printing via Wi-Fi

Printing via USB Cable

Troubleshooting

Appendix



- **Unplug the power cord periodically, and using a dry cloth, wipe away any dust or dirt that has collected on the plug, the exterior of the power outlet, and the surrounding area.**
 - **Do not handle the power cord with wet hands.**
 - **Do not use the equipment in a manner that exceeds the rated capacity of the electrical outlet or wiring accessories. Do not use if the power cord or plug are damaged, or not fully plugged into the outlet.**
 - **Do not allow dirt or metal objects (such as pins or keys) to contact the terminals or plug.**
 - **Do not cut, damage, alter, or place heavy items on the power cord.**
- This could result in electrical shock or fire.

- **If a CD-ROM is supplied, do not play it in a CD drive that does not support data CD-ROMs.**

It is possible to suffer hearing loss from listening with headphones to the loud sounds of a CD-ROM played on a music CD player. Additionally, playing the CD-ROM(s) in an audio CD player (music player) could damage the speakers.



Caution

Denotes the possibility of injury.

- **Do not stick any part of your hand into the printer interior.**
- **Place SELPHY in a safe location where people will not trip over the power cord.**

Failure to do this may lead to injury or printer damage.

- **Avoid using, placing, or storing the product in the following places:**
 - **Places subject to direct sunlight**
 - **Places subject to temperatures above 40 °C (104 °F)**
 - **Humid or dusty places**
 - **Places subject to strong vibration**

This may cause overheating of or damage to the printer or adapter, which may result in electric shock, burns or other injury, or fire.

High temperature may deform the product or adapters.

Caution

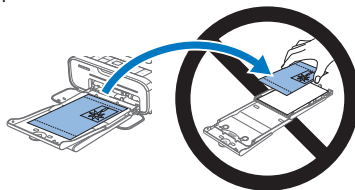
Denotes the possibility of damage to the equipment.

- **Unplug the product from the power outlet when you are not using it.**
- **Do not place anything, such as cloth, on top of the printer while in use.**

Leaving the unit plugged in for a long period of time may cause it to overheat and distort, resulting in fire.

- **Never reuse paper for printing, even if most of the paper is blank, as shown.**

Reusing paper may damage the printer if paper jams or the ink sheet adheres to the paper.



- **Do not unplug the printer while it is printing.**
- If you accidentally turn the printer off while printing, restart it and wait until the paper is ejected. If paper jams and cannot be removed, contact your retailer or a Canon Customer Support Help Desk. Do not attempt to remove jammed paper by force, which may damage the printer.
- **Do not use the printer near motors or other devices that generate strong magnetic fields, or in dusty environments.**
- This may damage the printer or cause malfunction.

Cover

Contents

Part Names

Basic Operations

Print Settings

Printing via Wi-Fi

Printing via USB Cable

Troubleshooting

Appendix



Contents

Package Contents	2
Ink and Paper (Sold Separately).....	2
Before Use.....	3
Conventions in This Guide.....	3
Safety Precautions.....	3
Contents.....	5
Part Names.....	5

Basic Operations 7

Initial Preparations	8
Supported Cards/Images	13
Printing Images (Select & Print).....	14
Storing Prints	16
After Printing	17

Print Settings 18

Printing All Images	19
Cropping Images	20
Printing ID Photos.....	21
Selecting and Printing Images from History (Reprint).....	23
Adjusting Settings	24

Printing via Wi-Fi..... 33

Printing from a Smartphone.....	34
Printing from a Camera.....	37
Printing from a Computer.....	39
Other Wi-Fi Functions	47

Printing via USB Cable .. 50

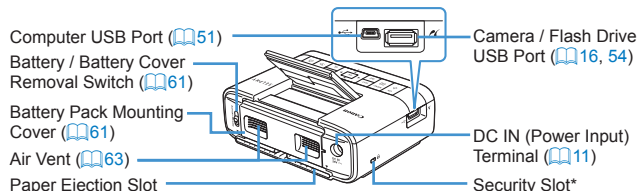
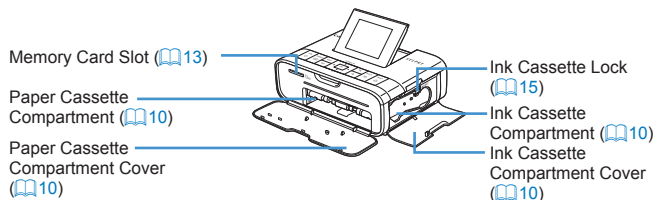
Printing from a Computer (Windows).....	51
Printing from a Computer (Mac OS).....	53
Printing from a Camera.....	54

Troubleshooting..... 55

Appendix 60

Printing without a Power Outlet ...	61
Specifications.....	62
Handling and Maintenance	63
Wi-Fi (Wireless LAN) Precautions.....	64

Part Names



* Security cables, such as a Kensington lock, can be attached to this slot.

Cover

Contents

Part Names

Basic Operations

Print Settings

Printing via Wi-Fi

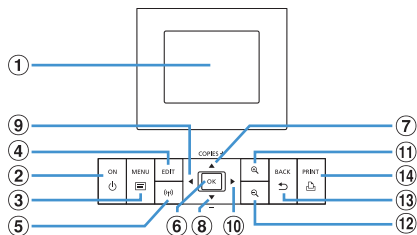
Printing via USB Cable

Troubleshooting

Appendix

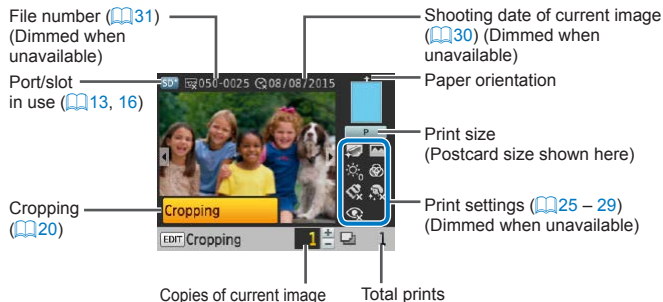


Controls



Icons in This Guide	Name	Function
①	–	Screen (LCD monitor) Displays images, setting screens, or error messages (p.59)
②	<P>	Power button Turns SELPHY on or off (p.12)
③	<M>	MENU button Displays the menu screen (p.12)
④	–	EDIT button Displays the editing menu and rotates the crop frame
⑤	<(P)>	Wi-Fi button Displays the setting screen for the Wi-Fi connection method (p.47)
⑥	<OK>	OK button Confirms the selected item
⑦	<▲>	Up/+ button Specifies the number of prints or selects setting items
⑧	<▼>	Down/- button
⑨	<◀>	Left button Switches images, changes setting values
⑩	<▶>	Right button
⑪	<Q>	Enlarge button Switches display modes, enlarges the crop frame
⑫	<Q>	Reduce button Switches display modes, reduces the crop frame
⑬	<↶>	Back button Restores the previous screen (p.25), cancels printing (p.14)
⑭	<P>	Print button Starts printing (p.14)

On-Screen Information



Switching Display Modes

Press the <Q> button for full-screen display at higher resolution. The print area is outlined. Press the <Q> button to restore single-image display. Press the <Q> button to view nine images at once. Press the <Q> button to restore single-image display.

Cover

Contents

Part Names

Basic Operations

Print Settings

Printing via Wi-Fi

Printing via USB Cable

Troubleshooting

Appendix



Basic Operations

This chapter introduces basic printing operations such as preparing SELPHY, selecting images on a memory card, and specifying the number of copies.

Initial Preparations	8
Preparing the Ink Cassette.....	8
Preparing the Paper Cassette.....	9
Loading the Cassettes	10
Installing and Plugging in SELPHY	11
Display Language	12
Supported Cards/Images	13
Supported Memory Cards	13
Supported Images.....	13

Printing Images (Select & Print)	14
Avoiding Left Over Paper	15
Printing from USB Flash Drives	16
Making One Print from a Selected Image	16
Storing Prints	16
After Printing	17

Cover

Contents

Part Names

Basic Operations

Print Settings

Printing via Wi-Fi

Printing via USB
Cable

Troubleshooting

Appendix

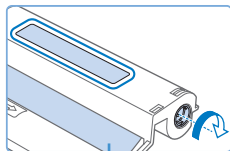


Initial Preparations

Prepare for printing as follows. This example shows a Postcard-size Color Ink / Paper Set (sold separately, [book 2](#)), but the same steps are followed for other sizes.

Avoid getting dust on ink sheets or paper, which may cause banding or damage the printer ([book 4](#)).

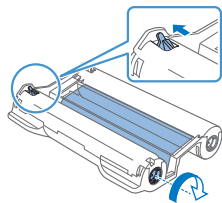
Preparing the Ink Cassette



Ink sheet

Check the ink cassette and ink sheet.

- Holding the ink cassette without touching the ink sheet, check the size (such as “POSTCARD SIZE” or “CARD SIZE”) to make sure it matches the size of paper you will print on.
- Make sure the ink sheet is taut. Loose ink sheets may tear when loaded. If the sheet is loose, turn the sprocket as shown.
- For an ink cassette that has a lock on the bottom, press the lock (as shown) to release it as you turn the sprocket to make the sheet taut.



- Do not hold the ink cassette with wet hands. Avoid touching the ink sheet, and avoid getting dust on it. Dirt or moisture may cause banding or affect print quality, tear ink sheets and prevent printing, or damage the printer ([book 4](#)).
- When turning the sprocket, turn it gently, only until the sheet is taut. Forcing the sprocket or overtightening it may tear ink sheets and prevent printing, or SELPHY may run out of ink before paper.
- Do not reuse ink cassettes. This may cause incorrect printing of images, paper jams and product malfunction.

Cover

Contents

Part Names

Basic Operations

Print Settings

Printing via Wi-Fi

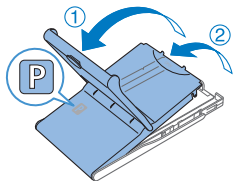
Printing via USB Cable

Troubleshooting

Appendix



Preparing the Paper Cassette



1 Check the paper size.

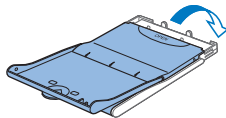
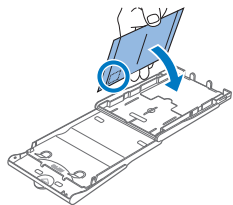
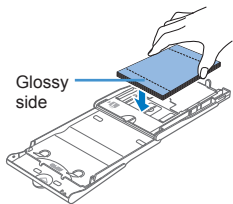
- Check the size on the paper cassette (such as “POSTCARD SIZE” or “CARD SIZE”) to make sure it matches the size of the ink cassette.

2 Open both covers.

- There are two layers of covers. First open the outer cover (①), and then the inner cover (②).

3 Load the paper.

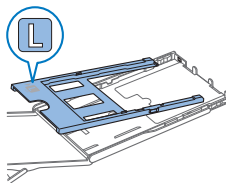
- Load the paper in the paper cassette.
- The paper cassette holds up to 18 sheets. Loading 19 or more sheets may damage the printer or cause malfunction.
- Holding the paper as shown, load it with the glossy side up. (Do not touch the glossy side of the paper, which may affect print quality.)
- Remove any protective sheets from the paper, and load only paper into the cassette.
- When making postcard prints with space for a stamp, load the paper with the stamp area facing as shown.



4 Close the inner cover.

- Close the inner cover firmly until it clicks into place.
- Leave the outer cover open when printing.

Printing on L-Size Paper



- You can use Paper Cassette PCPL-CP400 (sold separately) to print on L-size paper.
- To print on postcard paper, remove the adapter as shown.

Cover

Contents

Part Names

Basic Operations

Print Settings

Printing via Wi-Fi

Printing via USB Cable

Troubleshooting

Appendix



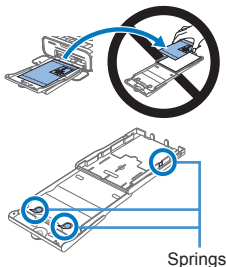


- Use of genuine Canon Color Ink/Paper Sets for SELPHY CP printers is recommended to achieve correct printing and excellent performance of this product.
- Canon Color Ink/Paper Sets for SELPHY ES and postcards cannot be used with this product.
- Never do the following, which may damage the printer or cause malfunction.

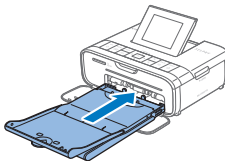
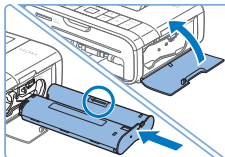
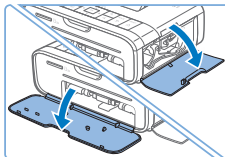
- Loading paper upside-down, with the glossy and back sides reversed
- Bending or separating paper at the perforations before printing
- Using label paper whose upper label surface is peeling off or has been partially pulled up
- Writing on paper before printing
- Reusing paper, as by printing on blank areas

(4)

- Do not touch the springs on the paper cassette. Accidentally bending the springs may prevent efficient paper feeding.
- Note that one spring is attached in the center on the top of card-size paper cassettes.
- Avoid touching or rubbing the glossy, printing side of the paper. Do not handle paper with wet hands, and keep paper free of dust. Dirt or moisture may cause banding or affect print quality, or damage the printer (4).



Loading the Cassettes



1 Open the covers.

- Open the ink and paper compartment covers.

2 Load the ink cassette.

- Insert the ink cassette into the printer in the direction of the arrow on the cassette until it clicks into place.
- Close the ink cassette compartment cover.

3 Load the paper cassette.

- Making sure the outer cover is open (9), insert the paper cassette all the way into the compartment.

Cover

Contents

Part Names

Basic Operations

Print Settings

Printing via Wi-Fi

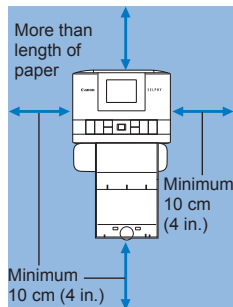
Printing via USB Cable

Troubleshooting

Appendix



Installing and Plugging in SELPHY

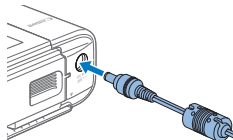


1 Choose the right place to put SELPHY.

- Place the printer on a table or other flat, stable surface. Never place the printer on an unstable or tilted surface.
- Keep the printer away from sources of electromagnetism or strong magnetism.
- Leave at least 10 cm (4 in.) of open space around the printer.
- Leave more open space behind the printer than the length of paper used, so that the paper can pass in and out of the printer freely when printing.

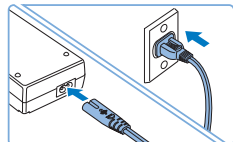
2 Plug the adapter cord into SELPHY.

- Insert the adapter plug fully into the power inlet on SELPHY.



3 Connect the power cord.

- Connect the power cord to the compact power adapter, and then plug the other end into a power outlet.



- Do not use the printer near motors or other devices that generate strong magnetic fields, or in dusty environments. This may damage the printer or cause malfunction.
- Do not place the printer near televisions or radios. This may cause the printer to malfunction.

Cover

Contents

Part Names

Basic Operations

Print Settings

Printing via Wi-Fi

Printing via USB
Cable

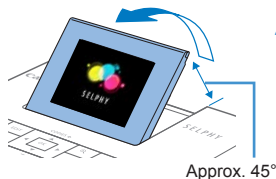
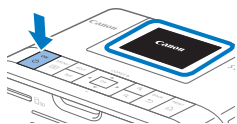
Troubleshooting

Appendix



Display Language

Change the language of menus and messages.



1 Turn on SELPHY.

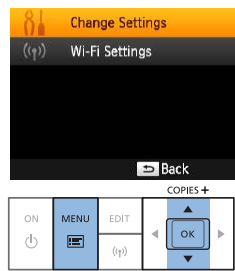
- Hold the <ON> button until the screen at left is displayed.
- To turn off SELPHY, hold the <ON> button again until the screen changes.

2 Raise the screen (LCD monitor).

- The screen can be raised up to approximately 45°. Do not attempt to force the screen up more than this amount, as doing so may damage the printer or cause malfunction.

3 Access the setting screen.

- Press the <MENU> button.
- Press the <▲><▼> buttons to select [Change Settings], and then press the <OK> button.



4 Access the language setting screen.

- Press the <▲><▼> buttons to select [Language], and then press the <OK> button.

5 Choose a language.

- Press the <▲><▼><◀><▶> buttons to select a language, and then press the <OK> button.
- To return to the screen in step 2, press the <◀> button twice.

Cover

Contents

Part Names

Basic Operations

Print Settings

Printing via Wi-Fi

Printing via USB Cable

Troubleshooting


Appendix




Supported Cards/Images

Supported Memory Cards

No Adapter Required

- SD Memory Card
- SDHC Memory Card
- SDXC Memory Card 

Adapter Required (Sold Separately)

- miniSD Memory Card
- miniSDHC Memory Card 
- microSD Memory Card
- microSDHC Memory Card
- microSDXC Memory Card



- For memory cards that require an adapter, always insert the card into the adapter before inserting the adapter into the card slot. If you mistakenly insert the memory card into the card slot without an adapter, you may not be able to remove the card from the printer.
- Use a memory card formatted with the device you shot the photos with. Images on cards formatted with a computer may not be recognized.



- For instructions, refer to the memory card or adapter user manual.

USB Flash Drives

You can print images on USB flash drives (sold separately) by inserting the drive into the USB port on SELPHY (📖 16).

Supported Images

JPEG images conforming to the Exif standard can be printed with SELPHY.



- Images may not be displayed or printed correctly depending on their size or if they have been edited on a computer.

Cover

Contents

Part Names

Basic Operations

Print Settings

Printing via Wi-Fi

Printing via USB
Cable

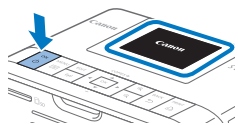
Troubleshooting

Appendix



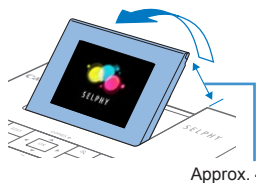
Printing Images (Select & Print)

Select images and specify the number of copies as follows. Here, printing from an SD memory card is described as an example, but you can print from other memory cards with the same steps.



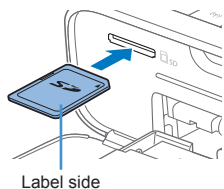
1 Turn on SELPHY.

- Hold the <P> button until the screen at left is displayed.
- To turn off SELPHY, hold the <P> button again until the screen changes.



2 Raise the screen (LCD monitor).

- The screen can be raised up to approximately 45°. Do not attempt to force the screen up more than this amount, as doing so may damage the printer or cause malfunction.



3 Insert the memory card into the slot.

- Insert the memory card facing as shown until it clicks into place.
- To remove the card, push it in until it clicks, and then slowly release it.
- The image display screen used in the next step is displayed (6).



Copies of current image

Total prints



4 Choose an image.

- Press the <◀><▶> buttons to select an image to print.
- To jump forward or back by five images, hold down the <◀><▶> buttons.

5 Choose the number of copies.

- Press the <▲><▼> buttons to specify the number of prints.
- To increase or decrease the quantity by five copies, hold down the <▲><▼> buttons.
- To print other images at the same time, repeat steps 4 – 5.

6 Print.

- Press the <P> button to start printing.
- While printing, paper passes in and out of the back of SELPHY several times. Do not touch the paper until printing is finished and the print is ejected onto the paper cassette.
- Do not allow 19 or more prints to collect in the ejection area on the paper cassette.
- To cancel printing in progress, always press the <↺> button.

Cover

Contents

Part Names

Basic Operations

Print Settings

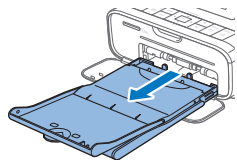
Printing via Wi-Fi

Printing via USB Cable

Troubleshooting

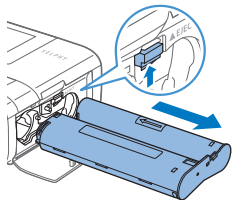
Appendix





7 Add more paper as needed.

- If a message indicates that the paper has run out, remove the paper cassette without turning off the power.
- Add more paper to the cassette (📖9) and reinsert the cassette in SELPHY (📖10).



8 Change the ink cassette as needed.

- If a message indicates that the ink has run out, open the ink cassette compartment cover without turning off the power.
- To remove the ink cassette, move the lock in the direction shown. Insert a new ink cassette (📖8, 10).



- Never pull out the paper cassette, open the ink cassette compartment cover, or remove a memory card while printing or when you hear printer operation sounds immediately after it has been turned on. This may damage the printer.
- To cancel printing in progress, always press the <↵> button. Printing cannot be canceled by pressing the <⏻> button, and unplugging the printer may damage it.



- Image display in step 4 may take some time when memory cards contain many images.
- If a message indicates that DPOF images remain, see "Printing Using Camera Settings (DPOF Print)" (📖54).
- You can specify up to 99 images in step 4 and up to 99 copies per image in step 5. However, the total number of prints cannot exceed 999.
- Even if you press the <↵> button to cancel printing, the printer will continue printing until the current sheet is finished.

Avoiding Left Over Paper

Note the following to prevent wasted paper, which occurs if ink is consumed faster than the paper.

- Do not turn the sprocket too much when removing slack from the ink sheet (📖8).
- To cancel printing in progress, always press the <↵> button; after pressing the <↵> button, never turn off the power before SELPHY is finished printing (step 6).
- If a message indicates that the paper has run out, add paper without turning off the printer or removing the ink cassette (step 7). Otherwise, press the <↵> button to cancel printing (step 6).

Note that under some conditions, even if you follow these instructions, ink may be consumed faster than the paper, leaving you with excess paper.

Cover

Contents

Part Names

Basic Operations

Print Settings

Printing via Wi-Fi

Printing via USB Cable

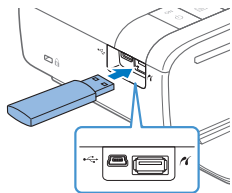
Troubleshooting

Appendix



Printing from USB Flash Drives

Images on USB flash drives (sold separately) can be printed the same way as images on memory cards.



- Remove any inserted memory cards.
- Insert a USB flash drive as shown.
- After this, all steps are the same as for printing images from memory cards (📖 14 – 15).



- Some USB flash drives may be more difficult than others to insert and remove, and some may not work as expected.
- For instructions, refer to the flash drive user manual.

Making One Print from a Selected Image

For a convenient way to make a single print of a selected image, follow these steps.



- Choose an image as described in steps 1 – 4 of “Printing Images (Select & Print)” (📖 14).
- Press the <🖨> button for a single print of the selected image.



- A single print is not produced this way if you follow steps 4 – 5 in “Printing Images (Select & Print)” (📖 14) to choose images and the number of copies. To use this method for individual prints, make sure the number of copies is [0] in step 4 on 📖 14 beforehand.

Storing Prints

- To remove any extra paper from the edges of a print, fold the paper along the perforations and tear the edges off.
- When writing on prints, use an oil-based pen.
- To prevent discoloration, do not store prints where temperatures exceed 40 °C (104 °F), in humid or dusty places, or in direct sunlight.
- Also avoid the following actions, which may cause discoloration, fading, or bleeding: sticking tape on the printed surface, allowing the printed surface to contact vinyl or plastic, applying alcohol or volatile solvents to the printed surface, or leaving the printed surface pressed firmly against other surfaces or objects over extended periods.
- When storing prints in an album, choose an album with photo covers made of nylon, polypropylene, or cellophane.



- Color may change over time or depending on storage conditions. Canon cannot be held liable for discoloration.

Cover

Contents

Part Names

Basic Operations

Print Settings

Printing via Wi-Fi

Printing via USB Cable

Troubleshooting

Appendix



After Printing

- ① Turn off SELPHY (📖12) and remove any memory cards or USB flash drives.
 - ② Lower the screen for storage.
 - ③ Unplug the power cord from the outlet and disconnect the adapter plug from SELPHY.
 - If the compact power adapter is still warm, wait for it to cool down before putting it away.
 - ④ Remove the paper cassette and close the paper cassette compartment cover. Leave any remaining paper in the cassette, and store the cassette in a dark, cool, and dry place away from dust.
 - Leave the ink cassette in SELPHY.
 - Store SELPHY on a flat surface, away from sunlight and dust. Any dust that gets inside SELPHY may cause white banding on photos or damage the printer.
-
- ❗
- Store any extra ink cassettes in the original package or a bag, away from sunlight and dust.
 - Store any unused paper or ink cassettes in their unopened packages, away from sunlight.

Cover

Contents

Part Names

Basic Operations

Print Settings

Printing via Wi-Fi

Printing via USB
Cable

Troubleshooting

Appendix



Print Settings

Explore a variety of printing features in this chapter, such as cropping images, preparing ID photos, and enhancing images.

Printing All Images	19
Cropping Images	20
Printing ID Photos	21
Cropping Images.....	23
Selecting and Printing Images from History (Reprint)	23
Adjusting Settings	24
Configuring Settings.....	25
Choosing the Finish (Print Finish).....	25
Printing with a Border around Images (Borders).....	26
Choosing a Layout (Page Layout).....	26
Optimal Prints with Auto Correction (Image Optimize).....	28

Adjusting the Brightness	28
Adjusting the Color Tone (Color Adjustment)	28
Adjusting the Color Tone (My Colors)	29
Making Skin Look Smooth (Smooth Skin).....	29
Reducing the Appearance of Red-Eye (Correct Red-Eye).....	29
Printing with the Date (Date)	30
Changing How the Date Is Displayed (Date Format).....	30
Adding the File Number when Printing (File Number).....	31
Using ID Photo Printing by Priority (ID Photo Priority)	31
Using the Same Borders and Page Layout Settings after Turning off the Power (Keep Print Settings).....	32
Saving Energy (Auto Power Down).....	32

Cover

Contents

Part Names

Basic Operations

Print Settings

Printing via Wi-Fi

Printing via USB
Cable

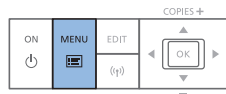
Troubleshooting

Appendix



Printing All Images

Print all images on a memory card at once as follows.



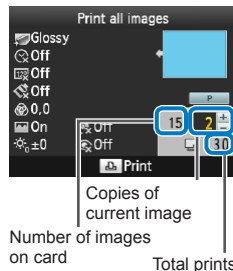
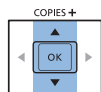
1 Access the menu.

- Press the button.



2 Access the setting screen.

- Press the to select [Print All Images], and then press the button.



3 Choose the number of copies.

- Press the to specify the number of copies.
- To increase or decrease the quantity by five copies, hold down the buttons.



4 Print.

- Press the to start printing.
- To cancel printing, press the button.



- If the memory card contains more than 999 images, the 999 most recent images are printed, as determined by shooting date.
- You can specify up to 99 prints in step 3. However, the total number of copies cannot exceed 999.
(For example, you can specify up to nine prints of each image if the card contains 100 images.)

Cover

Contents

Part Names

Basic Operations

Print Settings

Printing via Wi-Fi

Printing via USB Cable

Troubleshooting

Appendix



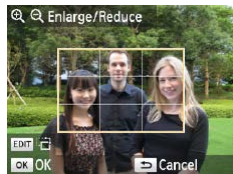
Cropping Images

Print only selected areas of an image as follows.



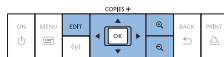
1 Access the cropping screen.

- Choose an image as described in step 4 of “Printing Images (Select & Print)” (📖 14), press the EDIT button, and then press the <OK> button.
- A crop frame is displayed, showing the image area that will be cropped.



2 Adjust the image area to crop.

- To switch the crop frame between portrait and landscape orientation, press the EDIT button.
- To move the crop frame, press the <▲><▼><◀><▶> buttons.
- To enlarge the crop frame, press the <⌕> button, and to reduce it, press the <Ⓚ> button.



3 Confirm the setting.

- To confirm the cropping area and return to the image display screen, press the <OK> button.
- To crop other images for printing with the first one, repeat steps 1 – 3.

4 Print.

- Print as described in step 6 of “Printing Images (Select & Print)” (📖 14).
- After printing, crop settings are cleared.



- To adjust the cropping area once you have set it, press the EDIT button on the image display screen, press the <▲><▼> buttons to select [Adjust Cropping], and then press the <OK> button. Repeat steps 2 – 3.
- To cancel cropping after you have set the cropping area, press the EDIT button on the image display screen, press the <▲><▼> buttons to select [Reset Cropping], press the <OK> button to access the reset cropping screen, and then press the <OK> button again.
- Cropping areas you have set are cleared if you turn off SELPHY or remove the memory card before printing.
- You can specify cropping for up to 99 images at once.
- Cropping is not available when printing with [Print All Images], [Reprint] or [DPOF Print] or when [Page Layout] (📖 26) is set to [Index] or [Shuffle].
- The cropping aspect ratio indicated by the frame displayed on images cannot be adjusted.
- To change the number of copies, press the <▲><▼> buttons on the image display screen in step 3. Note that specifying zero copies will not clear cropping settings.

Cover

Contents

Part Names

Basic Operations

Print Settings

Printing via Wi-Fi

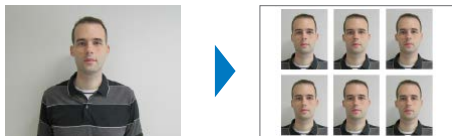
Printing via USB Cable

Troubleshooting

Appendix



Printing ID Photos



Images can be printed for use in photo identification. Choose from the following three sizes.

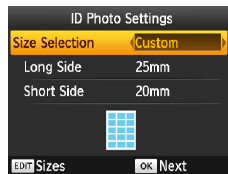
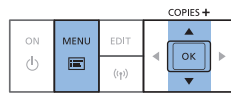
[Custom]	Specify the length of the long and short sides, and then print.
[Standard]	Print a photo that complies with the international ICAO standard.
[Dual]	Print two sizes: 50x50 mm (approx. 2.0x2.0 in.) and 45x35 mm (approx. 1.8x1.4 in.).

- With [Custom] and [Standard], two different images can be printed on each sheet.
- The photo may not be accepted as an official ID photo, depending on the intended purpose. For details, contact the institution that requires the photo.



1 Specify ID photo printing.

- Press the <F1> button.
- Press the <▲><▼> buttons to select [ID Photo], and then press the <OK> button.



2 Specify the finished size of the photo.

- Press the <◀><▶> buttons to specify how the size is determined.
- [Custom]: Press the <▲><▼> buttons to select [Long Side], and then press the <◀><▶> buttons to specify the length. Specify the [Short Side] length, and then press the <OK> button again. Note that options available for [Short Side] are automatically updated based on the [Long Side] length.
- [Standard] or [Dual]: Check the indicated image size and press the <OK> button.

3 Choose an image to print.

- Press the <◀><▶> buttons to select an image, and then press the <▲> button. ✓ is shown in the lower right (up to two images with [Custom] and [Standard], only one image with [Dual]).
- To specify the cropping area (📖20), press the EDIT button.
- Print as described in step 6 of “Printing Images (Select & Print)” (📖14).
- Settings are cleared after printing.

Cover

Contents

Part Names

Basic Operations

Print Settings

Printing via Wi-Fi

Printing via USB Cable

Troubleshooting

Appendix





- Card-size paper cannot be used.
- [Borders] settings are not applied, and dates and file number are not printed.
- Selecting two images in step 3 will produce an equal number of prints of each image per sheet, in your specified layout. Note that for layouts with an odd number of prints per sheet, the center frame on the sheet will be blank.
- The settings in the ID Photo Settings screen (21) are retained even when SELPHY is turned off.
- You can set the ID Photo Settings screen (21) to display when SELPHY is turned on or a memory card is inserted (31).
- Marks are printed in the four corners of each printed image as a guide for cutting out the photo.

■ Filtering Candidate Image Sizes

Many image size options are listed when you select [ID Photo] ► [Size Selection] ► [Custom]. To simplify size selection, you can edit the list to show only sizes used most often.

1 Access the setting screen.

- On the ID photo settings screen, choose [Size Selection] ► [Custom] (21), and then press the EDIT button.



- A warning message is displayed if you press the <↔> button when no sizes are selected. Press the <OK> button to return to the [Sizes] screen. Select at least one size to list, and then press the <↔> button.

2 Select sizes for display.

- To remove a size from the list, press the <▲><▼><◀><▶> buttons to select the size, and then press the <OK> button.
- The check mark (✓) is cleared, and the size will no longer be listed on the [ID Photo Settings] screen (21). To include a size in the list, press the <OK> button again to select the size, displaying ✓.
- Pressing the EDIT button clears all ✓. When no sizes are selected, pressing the EDIT button selects all sizes, displaying ✓.
- Once you have selected the sizes to include in the list, press the <↔> button.

Cover

Contents

Part Names

Basic Operations

Print Settings

Printing via Wi-Fi

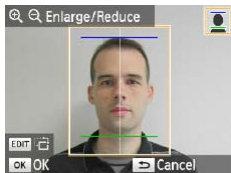
Printing via USB Cable

Troubleshooting

Appendix



Cropping Images



- Two cropping guide lines are displayed when you access the crop frame (📖20) when [Standard] or [Dual] size is selected in [ID Photo].
- When [Standard] is selected, to print a photo that conforms to passport standards for face size and position, adjust the crop frame so that one line is above the head and the other is below the chin.
- When [Dual] is selected, two frames with differing sizes are displayed simultaneously.



- For specific requirements other than face size and position, contact the institution that requires the photo.

Selecting and Printing Images from History (Reprint)

Images printed from Select & Print (📖14) remain in the history. Images can be selected from the print history and printed.



1 Access the print history.

- Press the <📖> button.
- Press the <▲><▼> buttons to select [Reprint], and then press the <OK> button.

2 Choose an image.

- Previously printed images, Page Layout and paper cassette are displayed as history information.
- Press the <▲><▼> buttons to select the image you want to print, and then press the <OK> button.

3 Choose the number of copies to print.

- Choose the number of copies and print as described in steps 3 and 4 of "Printing All Images" (📖19).

Cover

Contents

Part Names

Basic Operations

Print Settings

Printing via Wi-Fi

Printing via USB Cable

Troubleshooting

Appendix





- SELPHY can store up to 10 items in the print history.
- History information settings cannot be changed for printing.
- Follow the steps below to erase the history.
 - Remove the memory card
 - Turn off SELPHY
- The print history is not stored when [Shuffle] or [Index] is selected in Page Layout (26).
- The print history is not stored when printing in progress is canceled.
- Printing is not available when a paper cassette or ink cassette that differs from that in the history information is inserted.

Adjusting Settings

You can enhance images in several ways before printing. Add the shooting date, adjust colors, and more. Settings apply to all images, so there is no need to adjust each image individually.

Configurable Items	Description
Print Finish (25)	Choose the surface finish of prints.
Borders (26)	Print images with or without a border.
Page Layout (26)	Choose the number of images per sheet.
Image Optimize (28)	Automatically corrects the brightness and contrast according to the image.
Brightness (28)	Adjust image brightness in a range of -3 to +3.
Color Adjustment (28)	Adjust the color tone by adjusting the RBCY colors in a range of 0 to 3.
My Colors (29)	Choose special color tones to make prints look distinctive, or choose sepia or black-and-white prints.
Smooth Skin (29)	Make skin appear smooth and beautiful.
Correct Red-Eye (29)	Correct images affected by red-eye.
Date (30)	Add camera shooting dates when you print.
Date Format (30)	Adjust the date format.
File Number (31)	Add the file number when you print.
ID Photo Priority (31)	Set the ID Photo Settings screen to be the default display.
Keep Print Settings (32)	Retain the [Borders] and [Page Layout] settings even after SELPHY is turned off.
Auto Power Down (32)	Specify automatic power-off when the printer is idle.
Language (12)	Change the language of menus and messages.

Cover

Contents

Part Names

Basic Operations

Print Settings

Printing via Wi-Fi

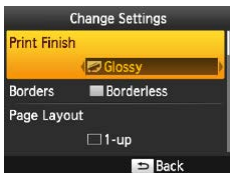
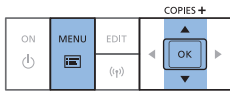
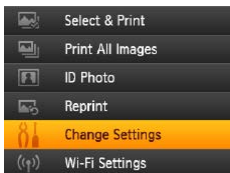
Printing via USB Cable

Troubleshooting

Appendix



Configuring Settings



1 Access the setting screen.

- Press the button.
- Press the buttons to select [Change Settings], and then press the button.

2 Select an item and adjust the setting.

- Press the buttons to select an item.
- Press the buttons to adjust the settings, and then press the button to confirm your choice.

3 Access the image display screen.

- Press the buttons to select [Select & Print], and then press the button.
- See [25 – 32](#) for details on each feature.

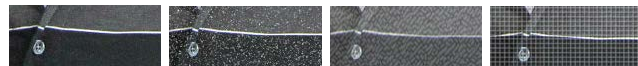
4 Print.

- Select the images and the number of copies ([14](#)), and then press the button to print.

Choosing the Finish (Print Finish)



Example of finish



Glossy

Pattern 1

Pattern 2

Pattern 3

- By adding a subtle texture to the surface of prints, you can create a less glossy finish.

Glossy (default)	Prints with a glossy surface finish.
Pattern 1	Applies a slightly rough surface pattern, for a less glossy finish.
Pattern 2	Applies a fine surface pattern, for a less glossy finish.
Pattern 3	Applies a fine grid-like surface pattern, for a less glossy finish.

Cover

Contents

Part Names

Basic Operations

Print Settings

Printing via Wi-Fi

Printing via USB Cable

Troubleshooting

Appendix





- The surface finish may not be as expected depending on SELPHY's internal temperature when you turn it on. Before turning on SELPHY and printing, wait until it has adjusted to an ambient temperature of 10 – 35 °C (50 – 95 °F).



- Turning off SELPHY will restore the default setting of [Glossy].

Printing with a Border around Images (Borders)



- Print images with or without a border.
- Borderless (default) / Bordered



- Turning off SELPHY will restore the default setting of [Borderless]. You can have SELPHY retain configured settings ([32](#)).

Choosing a Layout (Page Layout)



- Choose the number of images per sheet. Your specified quantity of prints ([14](#)) will be printed in the configured layout.
- With Color Ink / Label Set KC-18IL (8 Labels per Page, [2](#)), specify [8-up].

1-up (default)	One image per sheet	2-up (Fixed Size)	Two card size images are printed on one sheet
2-up	Two images per sheet	Index	Many small, uniform size images per sheet
4-up	Four images per sheet	Shuffle	Images in a variety of sizes on a single sheet
8-up	Eight images per sheet		

Cover

Contents

Part Names

Basic Operations

Print Settings

Printing via Wi-Fi

Printing via USB Cable

Troubleshooting

Appendix



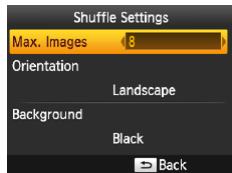


- Turning off SELPHY will restore the default setting of [1-up]. You can have SELPHY retain configured settings ([32](#)).
- The position of images cannot be specified.
- Depending on the configured layout, images may not be printed with the settings in [Date] ([30](#)), [File Number] ([31](#)), [Image Optimize] ([28](#)), [Correct Red-Eye] ([29](#)), [Borders] ([26](#)), or [Smooth Skin] ([29](#)).
- Carrying out [Print All Images] ([19](#)) with [Index] selected, allows you to print all images on the memory card as an index.

■ Combining Images of Various Sizes (Shuffle)



- Use the shuffle feature to have images arranged automatically in a variety of sizes.
- Groups of up to 8 or 20 images can be printed on a single sheet.
- Either L or postcard-size paper ([2](#)) can be used for printing.



- On the screen in step 2 of “Configuring Settings” ([25](#)), press the <▲><▼> buttons to select [Page Layout]. Press the <◀><▶> buttons to select [Shuffle], and then press the <OK> button.
- On the screen at left, press the <▲><▼> buttons to select an item.
- Press the <◀><▶> buttons to adjust the settings, and then press the <↵> button to confirm your choice.

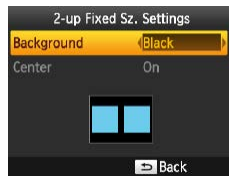


- The position of images cannot be specified.
- It may take some time before printing begins.

■ Printing Two Card Size Images on One Sheet (2-up (Fixed Size))



- Two card sized images can be printed in 2-up orientation on one L or postcard-size paper ([2](#)).



- On the screen in step 2 of “Configuring Settings” ([25](#)), press the <▲><▼> buttons to select [Page Layout]. Press the <◀><▶> buttons to select [2-up (Fixed Size)], and then press the <OK> button.
- On the screen at left, press the <▲><▼> buttons to select an item.
- Press the <◀><▶> buttons to adjust the setting, and then press the <↵> button to confirm your choice.

Cover

Contents

Part Names

Basic Operations

Print Settings

Printing via Wi-Fi

Printing via USB Cable

Troubleshooting

Appendix





- When [Bordered] is selected in [Borders] (26), [Off] can be selected in [Center].
- When printing an image that has a 4:3 or more elongated aspect ratio, the printed image layout is the same even if [Off] is selected for [Center].



- Marks are printed in the four corners of each printed image as a guide for cutting out the photo.

Optimal Prints with Auto Correction (Image Optimize)



- Automatically corrects the brightness and contrast according to the image.
- On (default) / Off

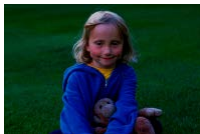


- Some images may not be adjusted correctly.



- Turning off SELPHY will restore the default setting of [On].
- When [Index] is selected in [Page Layout] (26), [Image Optimize] is not applied.
- The degree of correction may vary depending on layout and paper size.

Adjusting the Brightness



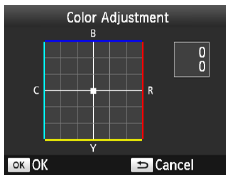
- Adjust image brightness in a range of -3 to +3.
- Choose larger positive values to make images brighter, or larger negative values to make them darker.



- Turning off SELPHY will restore the default setting of [±0].

Adjusting the Color Tone (Color Adjustment)

- Adjust the color tone by adjusting the RBCY colors in a range of 0 to 3.



- On the screen in step 2 of “Configuring Settings” (25), press the <▲><▼> buttons to select [Color Adjustment], and then press the <OK> button.
- Press the <▲><▼><◀><▶> buttons to select the values, and then press the <OK> button to confirm your choice.



- Turning off SELPHY will restore the default setting of [0,0].

Cover

Contents

Part Names

Basic Operations

Print Settings

Printing via Wi-Fi

Printing via USB Cable

Troubleshooting

Appendix



Adjusting the Color Tone (My Colors)

- Choose special color tones to make prints look distinctive, or choose sepia or black-and-white prints.

Off (default)	—	PositiveFilm	Saturated, natural colors, as produced with positive film
Vivid	Vivid prints with greater contrast and color saturation	Sepia	Sepia-tone
Neutral	Subdued prints with less contrast and color saturation	B/W	Black and white



- Turning off SELPHY will restore the default setting of [Off].
- Some color options may prevent red-eye correction ([29](#)).

Making Skin Look Smooth (Smooth Skin)

- Make skin appear smooth and beautiful.
- Off (default) / On

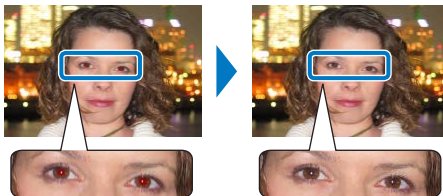


- Correction may be applied to image areas other than skin in some cases, and results may not be as expected.



- The default setting of [Off] is restored after printing, when SELPHY is turned off, or when a memory card is removed.
- When [Index] is selected in [Page Layout] ([26](#)), [Smooth Skin] is not applied.

Reducing the Appearance of Red-Eye (Correct Red-Eye)



- Correct images affected by red-eye.
- Off (default) / On



- Red-eye correction may mistakenly be applied to areas of the image other than the affected eyes. To avoid this, select [On] only for images affected by red-eye.



- Turning off SELPHY or removing the memory card will restore the default setting of [Off].
- Red-eye may not be detected or corrected well on faces covering a very large/small area of the screen, on bright/dark faces, in shots from the side of or at an angle to the face, or when part of the face is not visible.
- Red-eye correction is not applied when [Page Layout] ([26](#)) is set to [2-up], [4-up], [8-up] or [Index].
- Similarly, red-eye correction is not applied when [My Colors] ([29](#)) is set to [Sepia] or [B/W].
- The degree of correction may vary depending on cropping, page layout, and paper size.

Cover

Contents

Part Names

Basic Operations

Print Settings

Printing via Wi-Fi

Printing via USB Cable

Troubleshooting

Appendix



Printing with the Date (Date)



08/08/2015

- Add camera shooting dates when you print.
- Off (default) / Prominent / Subtle



- To prevent two instances of the date on images already labeled by the camera, select [Off].



- Turning off SELPHY will restore the default setting of [Off].
- The date added to prints cannot be changed, because it is the date assigned by the camera when the photos were taken.
- To change how the date displays, adjust [Date Format] ([30](#)).
- Dates are not printed when [Page Layout] ([26](#)) is set to [Shuffle].
- Dates are not printed when [ID Photo] ([21](#)) is selected.
- Dates may not be printed depending on the aspect ratio of the image, printing orientation or paper size.
- When Date is set to [On] in DPOF Print ([54](#)), [Prominent] settings are applied even if the SELPHY settings are [Off].
- [Subtle] printing may not be available even if [Subtle] is selected depending on the aspect ratio of the image, printing orientation or paper size.
- If [Subtle] printing is not available even when [Subtle] is selected when Date is set to [On] in DPOF Print ([54](#)), the image will be printed using [Prominent].

Changing How the Date Is Displayed (Date Format)



08/08/2015



2015/08/08

- When adding the date ([30](#)), adjust the date format as needed.
- mm/dd/yyyy (default), dd/mm/yyyy, or yyyy/mm/dd



- The setting is retained even when SELPHY is turned off or memory cards are removed.

Cover

Contents

Part Names

Basic Operations

Print Settings

Printing via Wi-Fi

Printing via USB Cable

Troubleshooting

Appendix



Adding the File Number when Printing (File Number)

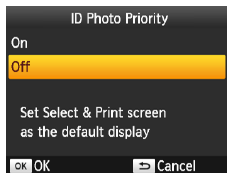
- The file number can be added to the image when printing.
- [123] Off (default) / [123] Prominent / [124] Subtle



- Turning off SELPHY will restore the default setting of [123] Off.
- The file number added to prints is the file number assigned by the camera when the photos were taken, so it cannot be changed by SELPHY.
- File numbers are not printed when [Page Layout] (26) is set to [125] Shuffle.
- File numbers are not printed when [ID Photo] (21) is selected.
- File numbers may not be printed depending on the aspect ratio of the image or paper size.
- When file number is set to [On] in DPOF Print (54), [Prominent] settings are applied even if the SELPHY settings are [Off].
- [Subtle] printing may not be available even if [124] Subtle is selected depending on the aspect ratio of the image, printing orientation or paper size.
- If [Subtle] printing is not available even when [124] Subtle is selected when file number is set to [On] in DPOF Print (54), the image will be printed using [123] Prominent.

Using ID Photo Printing by Priority (ID Photo Priority)

- You can set the ID Photo Settings screen (21) to display when SELPHY is turned on, when a memory card is inserted, and after printing.
- When set to [Off], the [Select & Print] screen (14) is displayed.
- Off (default) / On



- In the screen in step 2 of “Configuring Settings” (25), press the <▲><▼> buttons to select [ID Photo Priority], and then press the <OK> button.
- On the screen at left, press the <▲><▼> buttons to adjust the settings, and then press the <OK> button to confirm your choice.

Cover

Contents

Part Names

Basic Operations

Print Settings

Printing via Wi-Fi

Printing via USB Cable

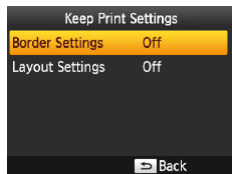
Troubleshooting

Appendix



Using the Same Borders and Page Layout Settings after Turning off the Power (Keep Print Settings)

- You can have SELPHY retain the Borders (26) and Page Layout (26) settings even after being turned off.
- Off (default) / On
- You can set this separately for Borders and Page Layout.



- On the screen in step 2 of “Configuring Settings” (25), press the <▲><▼> buttons to select [Keep Print Settings], and then press the <OK> button.
- On the screen at left, press the <▲><▼> buttons to select [Border Settings] or [Layout Settings], and then press the <OK> button.
- On the displayed screen, press the <▲><▼> buttons to adjust the settings, and then press the <OK> button to confirm your choice.

Saving Energy (Auto Power Down)

- SELPHY turns off automatically if left idle for about five minutes.
- On (default) / Off



- If any of the following happen, SELPHY does not turn off automatically.
 - When a different device is connected
 - When the Wi-Fi function is enabled
 - When an error message is displayed on the screen
- If an unsupported image is included (13) when printing multiple images, [Could not print some images! Cancel printing?] is displayed and printing stops. If this happens, SELPHY does not turn off automatically.

Cover

Contents

Part Names

Basic Operations

Print Settings

Printing via Wi-Fi

Printing via USB Cable

Troubleshooting

Appendix



Printing via Wi-Fi

This chapter describes how to wirelessly print images saved to Wi-Fi®*1-compatible smartphones and computers.

- This product is a Wi-Fi certified product. You can wirelessly print images from Wi-Fi-supporting smartphones*2, tablets*2, cameras*3, and computers.

*1 Wi-Fi is a brand name that indicates interoperability certification of wireless LAN devices.

*2 Requires installation of the dedicated Canon PRINT Inkjet/SELPHY app on your smartphone or tablet. (There is no need to install the dedicated application when printing from an AirPrint-compatible application ([🔗36](#).) Visit the Canon website for application details, including supported devices and available functions. For convenience in this manual, smartphones and tablets are collectively referred to as "smartphone".

*3 Devices must be compatible with DPS over IP, the PictBridge standard for Wi-Fi connections.



- Before using Wi-Fi, be sure to read "Wi-Fi (Wireless LAN) Precautions" ([📖64](#)).
- Some features are not available when printing via Wi-Fi.



- For convenience in this manual, wireless routers and other base stations are referred to as "access point".

Printing from a Smartphone.....	34
Subsequent Printing.....	36
Printing via AirPrint.....	36
Printing from a Camera	37
Subsequent Printing.....	39
Printing from a Computer.....	39
Confirming Access Point Compatibility.....	39
Connecting the Printer to the Access Point.....	40
Subsequent Connections	45
Printing from the Computer (Windows).....	45
Printing from the Computer (Mac OS).....	46

Other Wi-Fi Functions.....	47
Password Settings for Direct Connection.....	47
Changing the Connection Method.....	47
Disabling Wi-Fi.....	48
Checking Wi-Fi Settings Information.....	48
Changing the Printer Name.....	48
Specifying the Communication Protocol	48
Returning the Wi-Fi Settings to Default.....	49
Entering Information.....	49

Cover

Contents

Part Names

Basic Operations

Print Settings

Printing via Wi-Fi

Printing via USB
Cable

Troubleshooting

Appendix



Printing from a Smartphone

Even in places without an access point, you can print directly from a smartphone connected wirelessly to the printer. Also, there is no need to install the dedicated application when printing from an AirPrint-compatible application ([book 36](#)).

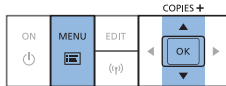
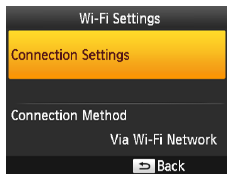


1 Install the dedicated application on your smartphone.

- For an iOS device (iPhone, iPad, or iPod touch), visit the App Store and download and install Canon PRINT Inkjet/SELPHY.
- For an Android device, download and install Canon PRINT Inkjet/SELPHY from Google Play.
- For a Windows RT device, visit the Windows Store and download and install Canon PRINT Inkjet/SELPHY.

2 Prepare SELPHY.

- Remove any inserted memory cards or USB flash drives.
- Insert a loaded paper cassette and an ink cassette in SELPHY. Refer to “Initial Preparations” ([book 8](#)) for details.



3 Access the setting screen.

- Press the button.
- Press the buttons to select [Wi-Fi Settings], and then press the **<OK>** button.
- Press the buttons to select [Connection Settings], and then press the **<OK>** button.

4 Check the printer name.

- Check the displayed printer name and press the **<OK>** button.
- You can change the printer name by pressing the EDIT button ([book 48](#)).

Cover

Contents

Part Names

Basic Operations

Print Settings

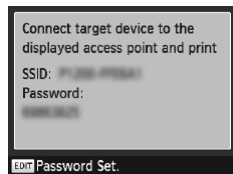
Printing via Wi-Fi

Printing via USB Cable

Troubleshooting

Appendix





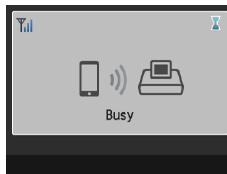
5 Choose the connection method.

- Press the <▲><▼> buttons to select [Direct Connection], and then press the <OK> button.

- The screen at left is displayed.

6 Use your smartphone to join the network displayed on the printer screen.

- In the smartphone's Wi-Fi settings, select the SSID (network name) displayed on the printer.
- Enter the password displayed on the printer into the password field.



7 Use your smartphone to print.

- Start Canon PRINT Inkjet/SELPHY, choose images, and print.
- Once printing begins, the screen at left is displayed.
- Do not disconnect the devices or close the application while this screen is displayed. Images may not be printed correctly or completely.
- The standby screen at left is displayed when printing is finished.



- Printing in progress cannot be canceled from SELPHY by using the <↶> button. Use the smartphone to stop printing.
- You can also connect the printer to a smartphone via an existing access point. In this case, connect the printer and smartphone to the same access point. For details on how to connect the printer to an access point, see "Connecting the Printer to the Access Point" (40).
- The printer does not enable communication between the devices connected to it.
- Press <(P)> to display the screen in step 5.

Cover

Contents

Part Names

Basic Operations

Print Settings

Printing via Wi-Fi

Printing via USB Cable

Troubleshooting

Appendix



Subsequent Printing

- Once you have completed the connection settings (📖34 – 35), the second, standby screen in step 7 on 📖35 is displayed automatically when you turn on the printer. To print, after the standby screen is displayed, simply use the smartphone as described in steps 6 – 7 on 📖35.
- During standby-screen display, you can view the SSID and password by pressing the <OK> button.
- Even during standby, you can print images on a memory card by inserting the card to access the screen in step 4 on 📖14.

Printing via AirPrint

You can also print from an iOS device (iPad, iPhone or iPod touch) using AirPrint. Make sure iOS is updated to the latest version.

1 Choose [Print].

- Choose images to print with the application on your iOS device, tap [🖨️], and in the menu options displayed, tap [Print].

2 Configure printer options.

- In [Printer], choose “Canon SELPHY CP1200”.
- Specify the number of copies.

3 Print.

- Tap [Print] to print.



- [Printer Options] may not be displayed in step 2, depending on AirPrint compatibility of the application. If printer options are not available, printing is not possible from the application.



- To perform another operation while printing is in progress, press the Home button twice. The [Print Center] icon will be displayed.
 - To check the status:
Tap the [Print Center] icon.
 - To cancel printing:
Tap the [Print Center] icon, and then tap [Cancel Printing].

Cover

Contents

Part Names

Basic Operations

Print Settings

Printing via Wi-Fi

Printing via USB
Cable

Troubleshooting

Appendix



■ If Printing via AirPrint is Not Possible

If you cannot print, check the following.

- Confirm that SELPHY is on. If SELPHY is on, try restarting it to see if the problem is resolved.
- Confirm that SELPHY is connected via Wi-Fi to the same access point as the Apple device.
- Confirm that the paper and ink cassettes are loaded correctly.
- Remove any inserted memory cards, USB flash drives, or USB cables.
- Confirm that no error messages are displayed on SELPHY.
- Try resetting the Wi-Fi settings (📖49) and connecting again.

If the issue persists, try another method of printing (📖34, 37, 39) to make sure SELPHY can print correctly. If printing is still not possible, see “Troubleshooting” (📖55).



- It may take a few minutes after you turn on SELPHY before Wi-Fi communication is possible. Confirm that SELPHY is connected to the access point (📖45) before you attempt to print.

Printing from a Camera

You can print as follows by connecting the printer to a camera compatible with DPS over IP, the PictBridge standard for Wi-Fi connections.

1 Prepare SELPHY.

- Remove any inserted memory cards or USB flash drives.
- Insert a loaded paper cassette and an ink cassette in SELPHY. Refer to “Initial Preparations” (📖8) for details.

2 Access the setting screen.

- Press the <📄> button.
- Press the <▲><▼> buttons to select [Wi-Fi Settings], and then press the <OK> button.
- Press the <▲><▼> buttons to select [Connection Settings], and then press the <OK> button.



Cover

Contents

Part Names

Basic Operations

Print Settings

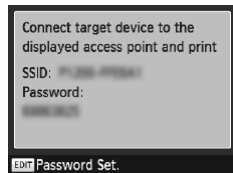
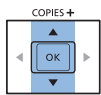
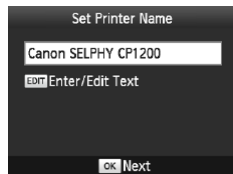
Printing via Wi-Fi

Printing via USB Cable

Troubleshooting

Appendix





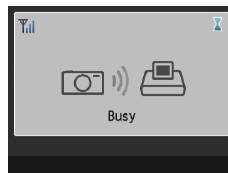
3 Check the printer name.

- Check the displayed printer name and press the **<OK>** button.
- You can change the printer name by pressing the EDIT button (📖48).

4 Choose the connection method.

- Press the **<▲><▼>** buttons to select [Direct Connection], and then press the **<OK>** button.

- The screen at left is displayed.



5 Use the camera to join the network displayed on the printer screen.

- In the camera's Wi-Fi settings, select the SSID (network name) displayed on the printer.
- Enter the password displayed on the printer into the password field.

6 Use the camera to print.

- Use the camera to select images and print.
- Once printing begins, the screen at left is displayed.
- Do not disconnect the devices while this screen is displayed. Images may not be printed correctly or completely.
- The standby screen at left is displayed when the camera is no longer connected.

Cover

Contents

Part Names

Basic Operations

Print Settings

Printing via Wi-Fi

Printing via USB Cable

Troubleshooting

Appendix





- Printing in progress cannot be canceled from SELPHY by using the <↵> button. Use the camera to stop printing.
- You can also connect the printer to a camera via an existing access point. In this case, connect the printer and camera to the same access point. For details on how to connect the printer to an access point, see "Connecting the Printer to the Access Point" (40).
- The printer does not enable communication between the devices connected to it.

Subsequent Printing

- Once you have completed the connection settings (37 – 38), the second, standby screen in step 6 is displayed automatically when you turn on the printer. To print, after the standby screen is displayed, simply use the camera as described in steps 5 – 6.
- During standby-screen display, you can view the SSID and password by pressing the <OK> button.
- Even during standby, you can print images on a memory card by inserting the card to access the screen in step 4 on 14.

Printing from a Computer

Confirming Access Point Compatibility

- Before you can print via Wi-Fi from a computer, the computer with the images to send must be connected to an access point.
- Use an access point that supports the following Wi-Fi standards. To check the standards your access point supports, refer to the access point user manual.

Standards	IEEE 802.11b/g
Supported Channels	1 – 11
Transmission Methods	DSSS (IEEE 802.11b) and OFDM (IEEE 802.11g)
Security	No security, 64- and 128-bit WEP (open system authentication), WPA-PSK (TKIP), WPA-PSK (AES), WPA2-PSK (TKIP), and WPA2-PSK (AES)

Cover

Contents

Part Names

Basic Operations

Print Settings

Printing via Wi-Fi

Printing via USB Cable

Troubleshooting

Appendix



- Confirm that the access point supports WPS (Wi-Fi Protected Setup).

WPS-Compatible Access Points	Connect as described in "WPS-Compatible Access Points" (40)*.
Non-WPS Access Points Or WPS Support Unknown	Check the following information and connect as described in "Non-WPS Access Points" (42). <ul style="list-style-type: none"> - Network name (SSID/ESSID) - Network authentication / data encryption (encryption method or mode) - Password (network key)

* WPS connections are not possible for access points set up for WEP security. Connect as described in "Non-WPS Access Points" (42).



- If your network is managed by a system administrator, ask the administrator for network setting details.



Connecting the Printer to the Access Point

How to connect varies depending on whether the access point is WPS-compatible (40) or not (42).



WPS-Compatible Access Points

1 Check the access point.

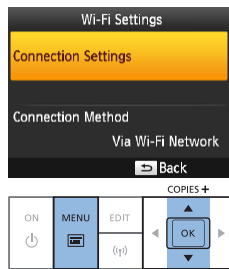
- Confirm that the access point is on and ready for communication.

2 Prepare SELPHY.

- Remove any inserted memory cards or USB flash drives.
- Insert a loaded paper cassette and an ink cassette in SELPHY (8 – 10).

3 Access the setting screen.

- Press the <≡> button.
- Press the <▲><▼> buttons to select [Wi-Fi Settings], and then press the <OK> button.
- Press the <▲><▼> buttons to select [Connection Settings], and then press the <OK> button.



Cover

Contents

Part Names

Basic Operations

Print Settings

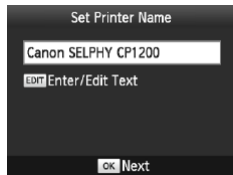
Printing via Wi-Fi

Printing via USB Cable

Troubleshooting

Appendix



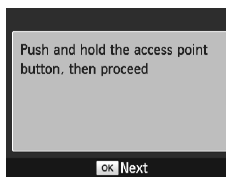
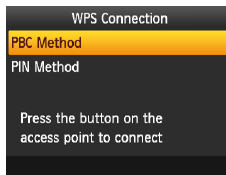
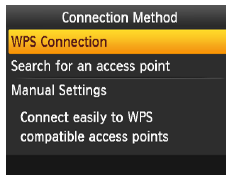


4 Check the printer name.

- Check the displayed printer name and press the **<OK>** button.
- You can change the printer name by pressing the EDIT button (48).

5 Choose the connection method.

- Press the **<▲><▼>** buttons to select [Via Wi-Fi Network], and then press the **<OK>** button.



6 Choose the access point connection method.

- Press the **<▲><▼>** buttons to select [WPS Connection], and then press the **<OK>** button.

7 Choose the WPS connection method.

- Press the **<▲><▼>** buttons to select [PBC Method], and then press the **<OK>** button.
- The screen at left is displayed.

Cover

Contents

Part Names

Basic Operations

Print Settings

Printing via Wi-Fi

Printing via USB Cable

Troubleshooting

Appendix





8 On the access point, hold down the WPS connection button for a few seconds.

- For details on where the button is located and how long to press it, check the access point user manual.

9 Establish the connection.

- On the printer, press the <OK> button.
- [Connecting] is displayed on the printer, followed by [Connected to access point] when connected. Press the <OK> button.
- The screen at left is displayed, indicating the name of the access point.



- If you selected [PIN Method] in step 7, use the computer to specify the PIN code (displayed on the printer) on the access point, press the <OK> button on the printer, and go to step 9. For instructions on configuring PIN codes, refer to the access point user manual.
- On SELPHY, wireless signal strength is indicated by the following icons.
[Full] High, [3/4] Medium, [1/2] Low, [1] Weak, [X] Out-of-range

Non-WPS Access Points

1 Check the access point.

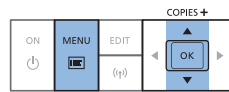
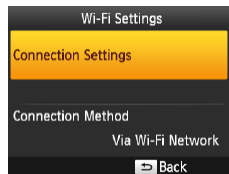
- Confirm that the access point is on and ready for communication.

2 Prepare SELPHY.

- Remove any inserted memory cards or USB flash drives.
- Insert a loaded paper cassette and an ink cassette in SELPHY (8 – 10).

3 Access the setting screen.

- Press the <Menu> button.
- Press the <▲><▼> buttons to select [Wi-Fi Settings], and then press the <OK> button.
- Press the <▲><▼> buttons to select [Connection Settings], and then press the <OK> button.



Cover

Contents

Part Names

Basic Operations

Print Settings

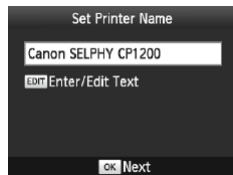
Printing via Wi-Fi

Printing via USB Cable

Troubleshooting

Appendix



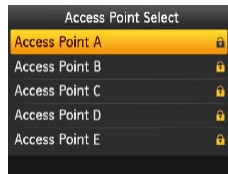
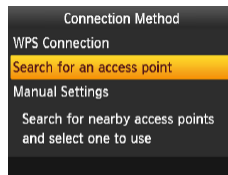


4 Check the printer name.

- Check the displayed printer name and press the **<OK>** button.
- You can change the printer name by pressing the EDIT button (📖48).

5 Choose the connection method.

- Press the **<▲><▼>** buttons to select [Via Wi-Fi Network], and then press the **<OK>** button.



6 Choose the access point connection method.

- Press the **<▲><▼>** buttons to select [Search for an access point], and then press the **<OK>** button.
- Access points found nearby are listed.

7 Choose the access point.

- Press the **<▲><▼>** buttons to select the access point, and then press the **<OK>** button.

Cover

Contents

Part Names

Basic Operations

Print Settings

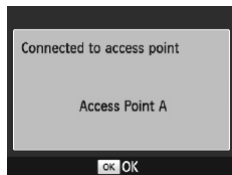
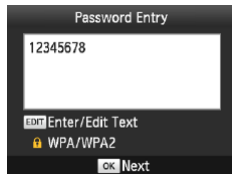
Printing via Wi-Fi

Printing via USB Cable

Troubleshooting

Appendix





8 Enter the password.

- Press the EDIT button to access the input screen, and then enter the password (49).
- Press the <OK> button.

9 Check the access point.

- Once the printer is connected to the access point, the screen at left is displayed. Check the indicated access point name and press the <OK> button.

- The screen at left is displayed.



- Selecting an unprotected access point in step 7 and pressing the <OK> button will display the screen in step 9.
- Up to 20 access points are listed. If your desired access point is not listed, press the <↔> button and select [Manual Settings] in step 6 on 43 to specify the access point manually. Follow on-screen instructions and enter the SSID, security settings, and the password (49).
- If WEP security is used and you enter the wrong password in step 8, when you press the <OK> button and then press the <OK> button again after the message, you will go to step 9, but printing is not possible. Check the access point password and try to connect again, starting at step 3.
- On SELPHY, wireless signal strength is indicated by the following icons.
[Full bars] High, [3 bars] Medium, [2 bars] Low, [1 bar] Weak, [X] Out-of-range

Cover

Contents

Part Names

Basic Operations

Print Settings

Printing via Wi-Fi

Printing via USB Cable

Troubleshooting

Appendix



Subsequent Connections



- Once you have connected to an access point, the printer will automatically reconnect to the previous access point whenever you turn it on again, and the standby screen at left will be displayed.

- If connection fails because the access point is off or for another reason, [Yx] will be displayed. Check access point settings (48).
- Even during standby, you can print images on a memory card by inserting the card to access the screen in step 4 on 14.
- Automatic access point connection at startup can also be disabled (48).

Printing from the Computer (Windows)

SELPHY can connect via Wi-Fi to computers running the following operating systems.

- Windows 8.1
- Windows 8
- Windows 7 SP1



1 Confirm that SELPHY is connected to the access point.

- Confirm that the screen at left is displayed on SELPHY.

2 Install the printer driver.

- Connect to the Internet from a computer and access "http://www.canon.com/icpd/".
- Select your country/region and follow the instructions displayed to complete the download.
- Double-click the [Driver] folder, and then double-click [cp1200-100-9l.exe].
- Follow the instructions displayed to complete installation.
- If the User Account Control window is displayed, follow the on-screen instructions.

Cover

Contents

Part Names

Basic Operations

Print Settings

Printing via Wi-Fi

Printing via USB Cable

Troubleshooting

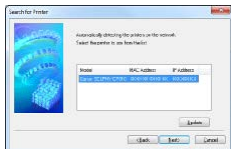
Appendix





3 Choose the connection method.

- When the screen at left is displayed, select [Use with a wireless network] and click [Next].



4 To complete the installation process, choose the printer to connect to.

- Choose the printer to connect to, and then click [Next].
- The printer driver is installed.

5 Access the printing dialog box.

- Start the photo software, select images to print, and access the printing dialog box.
- As the destination printer, select "Canon SELPHY CP1200".

6 Choose printing options.

- Choose a paper size corresponding to the size of paper and ink cassettes in SELPHY. Also choose bordered or borderless printing as an option with the listed paper sizes.
- Choose the printing orientation and number of copies, as desired.

7 Print.



- Printing in progress cannot be canceled from SELPHY by using the <=> button. Use the computer to stop printing.
- For computer or photo software instructions, refer to the relevant user manual.

Printing from the Computer (Mac OS)

You can print from the computer using AirPrint. SELPHY can connect to computers running the following operating systems.

- Mac OS X 10.8 or later



1 Confirm that SELPHY is connected to the access point.

- Confirm that the screen on the left is displayed on SELPHY.

2 Access the printing dialog box.

- Start the photo software, select images to print, and access the printing dialog box.
- As the destination printer, select "Canon SELPHY CP1200".

3 Choose printing options.

- Specify the paper size, orientation, and number of copies.
- To print at L size, select [89 x 119 mm] as the paper size.
- To print at P size, select [Postcard].
- To print at C size, select [54 x 86 mm] as the paper size.

Cover

Contents

Part Names

Basic Operations

Print Settings

Printing via Wi-Fi

Printing via USB Cable

Troubleshooting

Appendix



4 Print.

- Click [Print] to print.



- Printing in progress cannot be canceled from SELPHY by using the <↶> button. Use the computer to stop printing.
- For computer or photo software instructions, refer to the relevant user manual.
- If 89 x 119 mm cannot be selected for L size in step 4, select [Custom] as the paper size, and in the size settings, enter 89 mm as the width and 119 mm as the height. If 54 x 86 mm cannot be selected for C size, enter 54 mm as the width and 86 mm as the height.
- Mac OS: If "Canon SELPHY CP1200" is not available as a destination printer, register SELPHY on the computer as follows.
 - ① Access [System Preferences] > [Printers & Scanners] or [Print & Scan].
 - ② Click [+] below the list.
 - ③ Choose "Canon SELPHY CP1200".
 - ④ Click [Add].

Other Wi-Fi Functions

Password Settings for Direct Connection

You can change the password or set so that connections can be made without entering a password.

- Press the <☰> button and then the <▲><▼> buttons to select [Wi-Fi Settings], and then press the <OK> button.
- Press the <▲><▼> buttons to select the [Connection Method], and then press the <OK> button.
- Press the <▲><▼> buttons to select [Direct Connection], and then press the <OK> button.
- Press the Edit button.
- To change the password, press the <▲><▼> buttons to select [Change Password], press the <OK> button and then press the Edit button to enter text (49).
- To change the settings so that a password is not required for connections, press the <▲><▼> buttons to select [Password], press the <OK> button, select [Off] and then press the <OK> button.



- If the password is turned [Off], third parties with malicious intent may gain unauthorized access to SELPHY.
- It is recommended that this setting be constantly left [On].

Changing the Connection Method

You can change the connection method to suit how you use the printer.

- Press the <☰> button and then the <▲><▼> buttons to select [Wi-Fi Settings], and then press the <OK> button.
- Press the <▲><▼> buttons to select [Connection Method], and then press the <OK> button.
- Press the <▲><▼> buttons to select a connection method, and then press the <OK> button.

Cover

Contents

Part Names

Basic Operations

Print Settings

Printing via Wi-Fi

Printing via USB Cable








Troubleshooting

Appendix











Disabling Wi-Fi

Disable Wi-Fi connections as follows.

- Press the  button and then the  buttons to select [Wi-Fi Settings], and then press the **<OK>** button.
- Press the  buttons to select [Wi-Fi], and then press the **<OK>** button.
- Press the  buttons to select [Disable], and then press the **<OK>** button.
- To re-enable Wi-Fi connections, repeat these steps and select [Enable].









Checking Wi-Fi Settings Information

Check information (including the printer name and IP address) as follows.

- Press the  button and then the  buttons to select [Wi-Fi Settings], and then press the **<OK>** button.
- Press the  buttons to select [Confirm Settings], and then press the **<OK>** button.
- Press the  buttons to check setting information.
- Press the  button to exit.

Changing the Printer Name










Change the printer name ( 43) as follows.

- Press the  button and then the  buttons to select [Wi-Fi Settings], and then press the **<OK>** button.
- Press the  buttons to select [Other Settings], and then press the **<OK>** button.
- Press the  buttons to select [Set Printer Name], and then press the **<OK>** button.
- Press the EDIT button to access the input screen, and then enter a new printer name ( 49).

Specifying the Communication Protocol

Select the IP version.





1 Select the IP version.

- Press the  button and then the  buttons to select [Wi-Fi Settings], and then press the **<OK>** button.
- Press the  buttons to select [Other Settings], and then press the **<OK>** button.
- Press the  buttons to select [IPv4/IPv6 Settings], and then press the **<OK>** button.
- Press the  buttons to select the version, and then press the **<OK>** button.
- Check the indicated information and press the **<OK>** button.
- When selecting [IPv4], go to step 2.
- When [IPv6] is selected, select [Enable] or [Disable] and press the **<OK>** button.



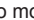

2 Choose auto or manual IP address configuration.

- For automatic IP address configuration, choose [Auto] and press the **<OK>** button. Setup is now finished.
- To enter the IP address manually, choose [Manual] and press the **<OK>** button. Go to step 3.

3 Enter the IP address.

- Press the  buttons to move the cursor, press the  buttons to specify the value, and then press the **<OK>** button.

4 Enter the subnet mask.

- Press the  buttons to move the cursor, press the  buttons to specify the value, and then press the **<OK>** button.

5 Check the settings.

- Review the indicated setting details and press the **<OK>** button.

Cover

Contents

Part Names

Basic Operations

Print Settings

Printing via Wi-Fi

Printing via USB
Cable

Troubleshooting

Appendix





- [IPv6] cannot be selected when using Direct Connection.

Returning the Wi-Fi Settings to Default

Reset Wi-Fi settings such as the printer name, access point information, and password as follows.

- Press the button and then the buttons to select [Wi-Fi Settings], and then press the **<OK>** button.
- Press the buttons to select [Reset Settings], and then press the **<OK>** button.
- Confirm your intent by pressing the **<OK>** button.

Entering Information

When entering a printer name, password, or other information, press the EDIT button to access the input screen.



Entering information

- Press the buttons to select a letter, number, or symbol, and then press the **<OK>** button. To enter a space, select [Space] and press the **<OK>** button.

Deleting information

- Press the buttons to select [], and then press the **<OK>** button.

Switching input modes

- To switch from uppercase to lowercase letters and then symbols, press the EDIT button repeatedly.



Returning to the previous screen

- To confirm input and return to the previous screen, press the buttons to select [Finish], and then press the **<OK>** button.
- To cancel input and return to the previous screen, press the button.

Cover

Contents

Part Names

Basic Operations

Print Settings

Printing via Wi-Fi

Printing via USB Cable

Troubleshooting

Appendix



Printing via USB Cable

This chapter describes how to connect a camera or computer to SELPHY via a USB cable for printing.

Cover

Contents

Part Names

Basic Operations

Print Settings

Printing via Wi-Fi

Printing via USB
Cable

Troubleshooting

Appendix

Printing from a Computer (Windows)	51
Preparing the Computer	51
Printing from a Computer (Mac OS)	53

Printing from a Camera	54
Printing Using Camera Settings (DPOF Print)	54



Printing from a Computer (Windows)

Here, instructions are given using Windows 7 as an example. SELPHY can connect to computers running the following operating systems.

- Windows 8.1
- Windows 8
- Windows 7 SP1

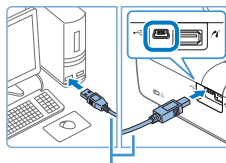
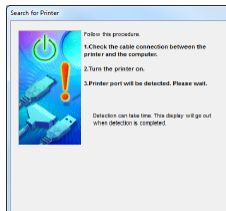
Preparing the Computer

What You Will Need

- Computer
- USB cable, 2.5 m (8.2 ft.) or shorter, sold separately (SELPHY port: Mini-B)

1 Install the printer driver.

- Connect to the Internet from a computer and access "<http://www.canon.com/icpd/>".
- Select your country/region and follow the instructions displayed to complete the download.
- Double-click the [Driver] folder, and then double-click [cp1200-100-9I.exe].
- Follow the instructions displayed to complete installation.
- If the User Account Control window is displayed, follow the on-screen instructions.



USB cable, sold separately



2 Choose the connection method.

- When the screen at left is displayed, select [Use via USB Connection] and click [Next].

3 When the screen at left is displayed, prepare the printer and connect it to the computer.

- Turn off SELPHY and remove any inserted memory cards or USB flash drives.
- Insert a loaded paper cassette and an ink cassette in SELPHY (8 – 10).
- Use the USB cable to connect SELPHY to the computer. For instructions, refer to the computer or cable user manual.

4 Turn on the printer to complete the installation process.

- Press the <Power> button to turn on SELPHY.
- The printer driver is installed.

Cover

Contents

Part Names

Basic Operations

Print Settings

Printing via Wi-Fi

Printing via USB Cable

Troubleshooting

Appendix



5 Prepare SELPHY.

- Remove any inserted memory cards or USB flash drives.
- Insert a loaded paper cassette and an ink cassette in SELPHY (8 – 10).
- If the printer and computer are not connected yet, turn off the printer momentarily, connect it to the computer via USB (51), and then turn on the printer again.

6 Access the printing dialog box.

- Start the photo software, select images to print, and access the printing dialog box.
- As the destination printer, select “Canon SELPHY CP1200”.

7 Choose printing options.

- Choose a paper size corresponding to the size of paper and ink cassettes in SELPHY. Also choose bordered or borderless printing as an option with the listed paper sizes.
- Choose the printing orientation and number of copies, as desired.

8 Print.



- Printing in progress cannot be canceled from SELPHY by using the <↩> button. To cancel printing, use the computer to delete the print job.
- The printer may not work correctly if it is connected to a computer via a USB hub.
- Avoid allowing your computer to enter sleep or standby mode while SELPHY is connected via USB. If the computer enters sleep mode with SELPHY connected via USB, wake the computer without disconnecting the USB cable. If recovery fails, restart the computer.
- For computer or photo software instructions, refer to the relevant user manual.



- If an error message is displayed on SELPHY, also check for any error messages displayed on the computer (in desktop mode). Messages will be automatically dismissed once you resolve the issue indicated.
- If a message is displayed on the computer, you can also click [Cancel] to cancel printing.

Cover

Contents

Part Names

Basic Operations

Print Settings

Printing via Wi-Fi

Printing via USB
Cable

Troubleshooting

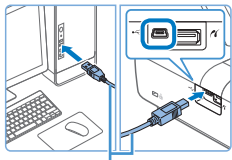
Appendix



Printing from a Computer (Mac OS)

You can print from the computer using AirPrint. SELPHY can connect to computers running the following operating systems.

- Mac OS X 10.8 or later



USB cable, sold separately

1 Prepare SELPHY and connect a computer.

- Remove any inserted memory cards or USB flash drives.
- Insert a loaded paper cassette and an ink cassette in SELPHY (8 – 10).

2 Access the printing dialog box.

- Start the photo software, select images to print, and access the printing dialog box.
- As the destination printer, select “Canon SELPHY CP1200”.

3 Choose printing options.

- Specify the paper size, orientation, and number of copies.
- To print at L size, select [89 x 119 mm] as the paper size.
- To print at P size, select [Postcard].
- To print at C size, select [54 x 86 mm] as the paper size.

4 Print.

- Click [Print] to print.



- Printing in progress cannot be canceled from SELPHY by using the <↔> button. To cancel printing, use the computer to delete the print job.
- SELPHY may not work correctly if it is connected to a computer via a USB hub.
- Avoid allowing your computer to enter sleep or standby mode while SELPHY is connected via USB. If the computer enters sleep mode with SELPHY connected via USB, wake the computer without disconnecting the USB cable. If recovery fails, restart the computer.
- For computer or photo software instructions, refer to the relevant user manual.



- If 89 x 119 mm cannot be selected for L size in step 3, select [Custom] as the paper size, and in the size settings, enter 89 mm as the width and 119 mm as the height. If 54 x 86 mm cannot be selected for C size, enter 54 mm as the width and 86 mm as the height.
- If an error message is displayed on SELPHY, also check for any error messages displayed on the computer (in desktop mode). Messages will be automatically dismissed once you resolve the issue indicated.
- If a message is displayed on the computer, you can also click [Cancel] to cancel printing.
- Mac OS: If “Canon SELPHY CP1200” is not available as a destination printer, register SELPHY on the computer as follows.
 - ① Access [System Preferences] > [Printers & Scanners] or [Print & Scan].
 - ② Click [+] below the list.
 - ③ Choose “Canon SELPHY CP1200”.
 - ④ Click [Add].

Cover

Contents

Part Names

Basic Operations

Print Settings

Printing via Wi-Fi

Printing via USB Cable

Troubleshooting

Appendix



Printing from a Camera

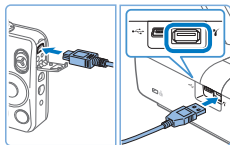
By connecting a PictBridge-compatible camera, you can choose images with the camera and print.

Here, printing instructions are given using a Canon compact digital camera as an example. If your camera is operated differently, refer to the camera user manual.

1 Prepare SELPHY.

- Confirm that no memory cards are inserted in SELPHY.

2 Connect SELPHY to the camera using the USB cable (51).



3 Turn on SELPHY and then the camera, and enter Playback mode.

- Some cameras will display a  icon.

4 On the camera, choose images and prepare to print.

- Use the camera to start printing.
- After printing, turn off SELPHY and the camera and disconnect the cable.



- Printing in progress cannot be canceled from SELPHY by using the <=> button. Use the camera to stop printing.
- This product uses PictBridge technology to print via USB. PictBridge technical standards facilitate direct connection of cameras, printers, and other devices for easy printing. This product is compliant with the DPS over IP standard that allows the use of PictBridge in network environments.

Printing Using Camera Settings (DPOF Print)

Inserting a memory card with DPOF information configured on a camera will display [DPOF images remain / Print images?]. To review the printing information set on the camera, press the <OK> button, and to print all designated images at once, press the <Print> button.



- For instructions on configuring DPOF information, refer to the camera user manual.
- Dates and file numbers are DPOF information set on the camera that cannot be changed on SELPHY.
- Images prepared with a [Print Type] of [Standard] on Canon cameras are printed according to the settings in "Adjusting Settings" (24 – 32).
- You can also review the printing information set on the camera by pressing the <Menu> button, selecting [DPOF Print], and pressing the <OK> button. However, [DPOF Print] is only displayed when a camera-configured memory card is inserted.

Cover

Contents

Part Names

Basic Operations

Print Settings

Printing via Wi-Fi

Printing via USB Cable

Troubleshooting

Appendix



Troubleshooting

Refer to these troubleshooting tips to resolve problems with SELPHY. If the problem persists, contact a Canon Customer Support Help Desk.

Cover

Contents

Part Names

Basic Operations

Print Settings

Printing via Wi-Fi

Printing via USB
Cable

Troubleshooting

Appendix

Power.....	56
Screen.....	56
Printing.....	56

Paper.....	57
Wi-Fi.....	58
Error Messages.....	59



Power

Cannot turn on SELPHY

- Confirm that the power cord is connected and plugged in correctly (📖11).
- Hold the <⏻> button until the startup screen is displayed (📖12).
- When using a battery pack, confirm that the battery pack is charged and inserted correctly.

Screen

Image display screen is not displayed (📖31)

- While the ID Photo Settings screen is displayed, press <☰> to display the menu, press the <▲><▼> buttons to choose [Select & Print], and then press the <OK> button.

Printing

Cannot print

- Confirm that SELPHY is on (📖12).
- Confirm that the paper and ink cassettes are loaded correctly (📖10).
- Confirm that the ink sheet is not loose (📖8).
- Confirm that you are using paper designed especially for SELPHY (📖10).
- Replace the ink cassette and refill the paper cassette as needed (📖15).
- Confirm that you are using the correct combination of paper, paper cassette, and ink cassette (📖8).

Cannot display or print images on memory cards or USB flash drives

- Confirm that the memory card is fully inserted in the correct slot, with the label face-up (📖13, 14).
- Confirm that the USB flash drive is fully inserted, right-side up (📖16).
- Confirm that the image format is supported (📖13).
- Confirm that a memory card requiring the use of an adapter has not been inserted without its adapter (📖13).

Cannot print from a camera

- Confirm that your camera supports PictBridge (📖54).
- When printing via Wi-Fi, confirm that both SELPHY and the camera are correctly connected to the access point (📖37).
- When printing via USB, confirm that SELPHY is connected directly to the camera with the USB cable (📖54).
- Confirm that your camera batteries have enough charge left. If the batteries are depleted, replace them with fully charged or new ones.
- Remove any inserted memory cards or USB flash drives from SELPHY.

Cannot print from a computer

- Confirm that you have installed the printer driver correctly (📖51).
- Remove any inserted memory cards or USB flash drives.
- When printing via Wi-Fi, confirm that both SELPHY and the computer are correctly connected to the access point (📖40).
- When printing via USB, confirm that SELPHY is connected directly to the computer with the USB cable (📖51).
- Windows: Confirm that the printer is not offline. If so, right-click the printer icon and bring the printer online.
- Mac OS: Confirm that you have added SELPHY to the Printer List (📖46, 53).

Cover

Contents

Part Names

Basic Operations

Print Settings

Printing via Wi-Fi

Printing via USB
Cable

Troubleshooting

Appendix



No date or file number when printing from memory cards or USB flash drives

- Confirm that SELPHY is set up to print the date or file number (📖30).
Note that in DPOF printing, date or file number printing is configured on the camera.

No date or file number when printing from cameras

- Confirm that the date or file number setting is enabled on the camera. Note that under standard camera settings, the date or file number setting on SELPHY will be used.

Print quality is poor

- Confirm that the ink sheet and paper are free of dirt or dust.
- Confirm that SELPHY's interior is free of dust (📖63).
- Confirm that no condensation has formed on SELPHY (📖63).
- Confirm that SELPHY is away from sources of electromagnetic waves or strong magnetic fields (📖11).

Printed colors do not match on-screen colors

- Screens have a different method of color development from printers.
Colors may also look different depending on the intensity and color temperature of lighting in the monitor viewing environment, as well as monitor color calibration.

Individual images are printed reduced, in only one layout position

- Change the [Page Layout] settings (📖26). When a layout in [Page Layout] other than [1-up] is selected, individual images are printed in one layout position per sheet if you print from a camera or other device that can only send one image at a time.

Printing takes too long

- SELPHY will temporarily halt printing if it exceeds a specific temperature; this does not indicate a problem. Wait until the printer cools off. During continuous printing, in hot environments, or if the printer's interior becomes hot because the rear-side air vent (📖5) is blocked, SELPHY may temporarily stop printing, causing printing to take longer.
- Printing may take some time depending on the printing environment. In this case, try another printing method (printing from a memory card, printing via Wi-Fi, printing via USB cable).

Paper

Paper does not fit in the cassette

- Confirm that the paper is the same size as the paper cassette (📖2).

Paper feed problems or frequent paper jams occur

- Confirm that the paper and cassette are inserted correctly (📖9, 10).
- Confirm that there are less than 19 sheets in the cassette.
- Confirm that 19 or more prints have not collected on the paper cassette.
- Confirm that you are using paper designed especially for SELPHY (📖10).

Cannot print the correct quantity (unused paper left after ink runs out)

- Some unused paper may remain if the ink runs out first (📖15).

Paper jams

- If paper protrudes from the front or back paper ejection slot (📖5), carefully pull it out. If you cannot remove the paper by gently pulling it out, never force it out. Turn the printer off and then on. Repeat until the paper is ejected. If you accidentally turn the printer off while printing, restart it and wait until the paper is ejected. If paper jams and cannot be removed, contact your retailer or a Canon Customer Support Help Desk.
Do not attempt to remove jammed paper by force, which may damage the printer.

Cover

Contents

Part Names

Basic Operations

Print Settings

Printing via Wi-Fi

Printing via USB
Cable

Troubleshooting

Appendix



Wi-Fi

Do not use the printer near sources of Wi-Fi signal interference, such as microwave ovens, Bluetooth devices, or other equipment operating on the 2.4 GHz band.

Device SSID (network name) not displayed when connecting to a camera or smartphone

- As the connection method, choose [Direct Connection] (📖35, 38).
- Keep the printer near the camera or smartphone, without objects between them.

Access point not displayed on the printer

Cannot connect the printer to the access point

- As the connection method, choose [Via Wi-Fi Network] (📖40).
- Confirm that the access point is on and ready for communication. For instructions on how to check, refer to the access point user manual.
- If there are many access points but the required one is not listed, connect using WPS (📖40) or manually (📖44).
- Keep the printer near the access point, without objects between them.
- Confirm that the password is correct, and try connecting again.
- Confirm that the access point channel is between 1 – 11. Instead of auto channel assignment, it is advisable to specify a channel in this range manually. For instructions on checking or adjusting the settings, refer to the access point user manual.
- If the access point filters communication by MAC or IP addresses, on the access point, register the printer information shown when you check the settings (📖48). Also try disabling any access point isolation or privacy separation functions. For instructions on checking or adjusting the settings, refer to the access point user manual.
- In WEP networks without DHCP, set the IP address manually (📖48).

Cannot connect via Wi-Fi

- Try restarting SELPHY. If a connection still cannot be established, check the settings of the access point or other device for the Wi-Fi connection.
- If connection via [WPS Connection] is not possible, try connecting by using [Search for an access point] (📖42) or [Manual Settings] (📖44).

Can connect to access point, but cannot print

- Remove any inserted memory cards or USB flash drives.
- Printing is not possible when the printer is already printing a job from another device, or when the printer is connected to a camera.
- When printing from a smartphone, install Canon PRINT Inkjet/SELPHY (📖34).
- Confirm that the camera, smartphone, or computer you are printing from is connected to the same access point as SELPHY.
- Check the access point password and try to connect again (📖45).
- If a message is displayed after you enter the correct password and press the <OK> button (📖44), confirm that DHCP server functionality is enabled on the access point, and make sure connection settings on SELPHY such as the IP address are correct (📖48).

Printing takes too long, or the Wi-Fi connection is lost

- Do not use the printer near sources of Wi-Fi signal interference, such as microwave ovens, Bluetooth devices, or other equipment operating on the 2.4 GHz band. Note that even when [Yi!] is displayed, image transmission may take some time.
- In direct connections (📖34, 37), keep the printer near the camera or smartphone, without objects in between.
- In connections via an access point (📖40), keep the printer near the access point, without objects in between.

Cannot connect via Wi-Fi from the computer

- Confirm that the printer driver is installed correctly in Windows.
- In Windows, enable [Network Discovery].
- In Mac OS, register SELPHY on the computer (📖46).

Cover

Contents

Part Names

Basic Operations

Print Settings

Printing via Wi-Fi

Printing via USB Cable

Troubleshooting

Appendix



Message displayed when connecting a camera or smartphone

- Using [Direct Connection], you can connect up to 8 devices at a time. Attempting to connect more than 8 devices will display a message. In this case, use one of the connected devices to disconnect from the printer, press the **<OK>** button on the printer to clear the message, and then use the device for the new connection to connect to the printer. If disconnection is not possible using a connected device, turn off the printer momentarily to disconnect all devices, and then turn the printer on again.

Error Messages

Error messages indicate problems with SELPHY. When error messages include troubleshooting tips, follow the instructions. If only an error message is displayed, follow the suggestions in “Troubleshooting” (55). If the problem persists, contact a Canon Customer Support Help Desk.



- If a problem occurs while SELPHY is connected to another device, an error message may also be displayed on the device. Check both SELPHY and the device.

Cover

Contents

Part Names

Basic Operations

Print Settings

Printing via Wi-Fi

Printing via USB
Cable

Troubleshooting

Appendix



Appendix

Instructions for battery-powered printing with an optional battery pack are given here, along with SELPHY specifications and handling and maintenance tips.

Printing without a Power Outlet.....	61
Attaching the Battery Pack.....	61
Charging the Battery to Use SELPHY.....	61
Specifications.....	62
Handling and Maintenance.....	63

Wi-Fi (Wireless LAN) Precautions	64
Radio Wave Interference Precautions	64
Security Precautions	65
While Printing	65

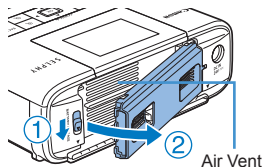
[Cover](#)[Contents](#)[Part Names](#)[Basic Operations](#)[Print Settings](#)[Printing via Wi-Fi](#)[Printing via USB
Cable](#)[Troubleshooting](#)[Appendix](#)

Printing without a Power Outlet

To print where no power outlet is available, use Battery Pack NB-CP2LH (sold separately). On a full charge, up to about 54 sheets* of postcard-size paper can be printed.

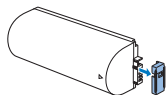
* According to Canon testing. May vary depending on printing conditions.

Attaching the Battery Pack

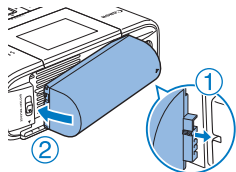


1 Remove the battery pack mounting cover.

- With the switch held in the direction of the arrow (①), move the cover in the direction of the arrow (②) to remove.



2 Remove the battery terminal cover.



3 Attach the battery pack.

- Slide the terminal-end in the direction of the arrow (①) and insert the other end (②) until it clicks into place.



- Battery Pack NB-CP2L (sold separately) can also be used. On a full charge, up to about 36 sheets of postcard-size paper can be printed. According to Canon testing. May vary depending on printing conditions.

Charging the Battery to Use SELPHY

- Once power is connected (📖11), charging starts and [🔋⚡] blinks on the screen.
- When charging is finished in about four hours (at room temperature), [🔋⚡] will no longer be displayed.
- SELPHY can be used even while [🔋⚡] is blinking by turning it on (📖11). However, charging stops. When the power is turned off, [🔋⚡] blinks and charging resumes.



- For battery precautions, refer to the battery user manual.
- When [🔋⚡] is displayed, place SELPHY in an environment at operating temperature (📖62), and charge once it has adjusted to the ambient temperature.
- When [🔋X] is displayed in red, the battery has reached the end of its life. Please purchase a new battery.
- When [🔋⚡] is displayed, press and hold any button other than the <⏻> button for 3 seconds or more to clear [🔋⚡]. Also, if charging and the screen is off, press any button other than the <⏻> button to display [🔋⚡] for approximately 10 seconds.

Cover

Contents

Part Names

Basic Operations

Print Settings

Printing via Wi-Fi

Printing via USB Cable

Troubleshooting

Appendix



Specifications

Printing Method	Dye-sublimation thermal transfer (with overcoating)
Resolution	300 x 300 dpi
Gradation	256 shades per color
Ink	Dedicated color ink (Y/M/C/overcoating)
Paper	Postcard (photo paper), L (photo paper), and card size (photo paper, full-page label, 8 labels per sheet configuration, square labels)

Paper Size	Before tearing at perforations	After tearing at perforations
Postcard	100.0 x 177.0 mm (3.94 x 6.97 in.)	100.0 x 148.0 mm (3.94 x 5.83 in.)
L Size	89.0 x 148.0 mm (3.50 x 5.83 in.)	89.0 x 119.0 mm (3.50 x 4.69 in.)
Card	83.0 x 86.0 mm (3.27 x 3.39 in.)	54.0 x 86.0 mm (2.13 x 3.39 in.)
Full-page label	54.0 x 86.0 mm (2.13 x 3.39 in.)	—
Label on 8-label sheet	22.0 x 17.3 mm (0.87 x 0.68 in.)	—
Square labels	50.0 x 50.0 mm (1.97 x 1.97 in.)	—

Printing Speed*1		
Postcard	Approx. 47 sec.	(Approx. 58 sec.)*2
L Size	Approx. 39 sec.	(Approx. 49 sec.)*2
Card	Approx. 27 sec.	(Approx. 32 sec.)*2

Feeding System	Auto feeding from paper cassette
Ejection System	Auto ejection onto paper cassette
Screen	Tilting 2.7-type TFT LCD color monitor

Interfaces

Hi-Speed USB	Type A port for PictBridge-compatible devices Mini-B port for computers
Memory Cards	SD, SDHC, SDXC, miniSD*3, miniSDHC*3, microSD*3, microSDHC*3 and microSDXC*3
Wireless LAN	Standards: IEEE 802.11b/g Channels: 1 – 11 Connection: Infrastructure mode*4 Transmission: DSSS (IEEE 802.11b) or OFDM (IEEE 802.11g) Security: No security, WEP, WPA-PSK (AES/TKIP), WPA2-PSK (AES/TKIP)

USB Flash Drives	FAT or exFAT format only
Operating Temperature	5 – 40 °C (41 – 104 °F)
Operating Humidity	20 – 80%
Power	Compact Power Adapter CA-CP200 B Battery Pack NB-CP2LH (sold separately)
Power Consumption	60 W or less (standby: 4 W or less)
Dimensions	180.6 x 63.3 x 135.9 mm (7.11 x 2.49 x 5.35 in.)
Weight (printer body only)	Approx. 860 g (1.90 lb.)

*1 From the initial yellow printing pass until ejection.

*2 Values in parentheses indicate speeds when [Pattern 1], [Pattern 2], or [Pattern 3] is selected in [Print Finish].

*3 Requires an optional dedicated adapter.

*4 Supports Wi-Fi Protected Setup.

Cover

Contents

Part Names

Basic Operations

Print Settings

Printing via Wi-Fi

Printing via USB Cable

Troubleshooting

Appendix



■ Compact Power Adapter CA-CP200 B

Rated Input	100 – 240 V AC (50/60 Hz), 1.0 A (100 V) – 0.6 A (240 V)
Rated Output	24 V DC, 1.8 A
Operating Temperature	0 – 40°C (32 – 104 °F)

■ Battery Pack NB-CP2LH (Sold Separately)

Type	Rechargeable lithium-ion battery
Nominal Voltage	22.2 V DC
Nominal Capacity	1290 mAh
Charging Cycles	Approx. 300 times
Operating Temperature	5 – 40 °C (41 – 104 °F)

■ Battery Pack NB-CP2L (Sold Separately)

Type	Rechargeable lithium-ion battery
Nominal Voltage	22.2 V DC
Nominal Capacity	1200 mAh
Charging Cycles	Approx. 300 times
Operating Temperature	5 – 40 °C (41 – 104 °F)

- All data is based on tests by Canon.
- Printer specifications or appearance are subject to change without notice.



USA and Canada only:

As a participant in the international Energy Star Program, we believe this product satisfies the standards of the Energy Star Program.

■ Handling and Maintenance

- Do not subject the printer to excessive force, which may damage the printer or cause paper jams.
 - Do not expose the printer to insecticides or other volatile substances. Additionally, do not store the printer in contact with rubber, vinyl, or plastic products over extended periods, which may deteriorate the casing.
 - Avoid condensation on the printer, which may happen when moving the printer from cold to warm environments. Put the printer in a sealed plastic bag and allow it to adjust to the new temperature before removing the bag. If condensation forms, allow the printer to dry naturally at room temperature before using again.
 - When the printer becomes dirty, wipe it with a soft, dry cloth.
 - If the air vent (15) becomes dusty, remove the ink cassette (15) before wiping the dust away, to prevent dust from getting inside and affecting print quality.
-
- ! • Never wipe the printer with solvents, such as benzene or thinner, or neutral detergent, which may cause deformation or peeling of the casing.

Cover

Contents

Part Names

Basic Operations

Print Settings

Printing via Wi-Fi

Printing via USB Cable

Troubleshooting

Appendix



Wi-Fi (Wireless LAN) Precautions

- Countries and Regions Permitting WLAN Use
 - Use of WLAN is restricted in some countries and regions, and illegal use may be punishable under national or local regulations. To avoid violating WLAN regulations, visit the Canon website to check where use is allowed.
Note that Canon cannot be held liable for any problems arising from WLAN use in other countries and regions.
- Doing any of the following may incur legal penalties:
 - Disassembling or modifying the product
 - Removing the certification labels from the product
- According to foreign exchange and foreign trade law regulations, export permission (or service transaction permission) from the Japanese government is necessary to export strategic resources or services (including this product) outside Japan.
- Because this product includes American encryption software, it falls under U.S. Export Administration Regulations, and cannot be exported to or brought into a country under U.S. trade embargo.
- Be sure to make notes of the wireless LAN settings you use.
The wireless LAN settings saved to this product may change or be erased due to incorrect operation of the product, the effects of radio waves or static electricity, or accident or malfunction. Be sure to make notes of wireless LAN settings as a precaution. Please note that Canon accepts no responsibility for direct or indirect damages or loss of earnings resulting from a degradation or disappearance of content.
- When transferring this product to another person, disposing of it, or sending it for repair, be sure to note the wireless LAN settings and reset the product to its default settings (erase settings) if necessary.

- Canon will not make compensation for damages resulting from loss or theft of the product.
Canon accepts no responsibility for damages or loss resulting from unauthorized access or use of target devices registered on this product due to loss or theft of the product.
- Be sure to use the product as directed in this guide.
Be sure to use the wireless LAN function of this product within the guidelines noted in this guide. Canon accepts no responsibility for damages or loss if the function and product are used in ways other than as described in this guide.
- Do not use the wireless LAN function of this product near medical equipment or other electronic equipment.
Use of the wireless LAN function near medical equipment or other electronic equipment may affect operation of those devices.

Radio Wave Interference Precautions

This product may receive interference from other devices that emit radio waves.

To avoid interference, be sure to use this product as far away as possible from such devices, or avoid using the devices at the same time as this product.

Cover

Contents

Part Names

Basic Operations

Print Settings

Printing via Wi-Fi

Printing via USB Cable

Troubleshooting

Appendix



Security Precautions

Because Wi-Fi uses radio waves to transmit signals, security precautions more stringent than when using a LAN cable are required.

Keep the following points in mind when using Wi-Fi.

- Use only networks you are authorized to use.
This product searches for Wi-Fi networks in the vicinity and displays the results on the screen.
Networks you are not authorized to use (unknown networks) may also be displayed. However, attempting to connect to or using such networks could be regarded as unauthorized access. Be sure to use only networks you are authorized to use, and do not attempt to connect to other unknown networks.

If security settings have not been properly set, the following problems may occur.

- Transmission monitoring
Third parties with malicious intent may monitor Wi-Fi transmissions and attempt to acquire the data you are sending.
- Unauthorized network access
Third parties with malicious intent may gain unauthorized access to the network you are using to steal, modify, or destroy information. Additionally, you could fall victim to other types of unauthorized access such as impersonation (where someone assumes an identity to gain access to unauthorized information) or springboard attacks (where someone gains unauthorized access to your network as a springboard to cover their tracks when infiltrating other systems).
To prevent these types of problems from occurring, be sure to thoroughly secure your Wi-Fi network.
Only use this product's Wi-Fi function with a proper understanding of Wi-Fi security, and balance risk and convenience when adjusting security settings.

While Printing

Do not disconnect the printer from other devices until printing is finished, which may cause incomplete or incorrect prints.



This product can print using PictBridge over wireless LANs. PictBridge technical standards facilitate direct connection of cameras, printers, and other devices for easy printing. Support for the PictBridge DPS over IP standard enables the product to print wirelessly in network environments.

WPA Supplicant License

WPA Supplicant

Copyright (c) 2003-2012, Jouni Malinen <j@w1.fi> and contributors All Rights Reserved.

This program is licensed under the BSD license (the one with advertisement clause removed).

If you are submitting changes to the project, please see CONTRIBUTIONS file for more instructions.

License

This software may be distributed, used, and modified under the terms of BSD license: Redistribution and use in source and binary forms, with or without modification, are permitted provided that the following conditions are met:

1. Redistributions of source code must retain the above copyright notice, this list of conditions and the following disclaimer.
2. Redistributions in binary form must reproduce the above copyright notice, this list of conditions and the following disclaimer in the documentation and/or other materials provided with the distribution.
3. Neither the name(s) of the above-listed copyright holder(s) nor the names of its contributors may be used to endorse or promote products derived from this software without specific prior written permission.

Cover

Contents

Part Names

Basic Operations

Print Settings

Printing via Wi-Fi

Printing via USB Cable

Troubleshooting

Appendix



THIS SOFTWARE IS PROVIDED BY THE COPYRIGHT HOLDERS AND CONTRIBUTORS "AS IS" AND ANY EXPRESS OR IMPLIED WARRANTIES, INCLUDING, BUT NOT LIMITED TO, THE IMPLIED WARRANTIES OF MERCHANTABILITY AND FITNESS FOR A PARTICULAR PURPOSE ARE DISCLAIMED. IN NO EVENT SHALL THE COPYRIGHT OWNER OR CONTRIBUTORS BE LIABLE FOR ANY DIRECT, INDIRECT, INCIDENTAL, SPECIAL, EXEMPLARY, OR CONSEQUENTIAL DAMAGES (INCLUDING, BUT NOT LIMITED TO, PROCUREMENT OF SUBSTITUTE GOODS OR SERVICES; LOSS OF USE, DATA, OR PROFITS; OR BUSINESS INTERRUPTION) HOWEVER CAUSED AND ON ANY THEORY OF LIABILITY, WHETHER IN CONTRACT, STRICT LIABILITY, OR TORT (INCLUDING NEGLIGENCE OR OTHERWISE) ARISING IN ANY WAY OUT OF THE USE OF THIS SOFTWARE, EVEN IF ADVISED OF THE POSSIBILITY OF SUCH DAMAGE.

■ Trademarks and Licenses

- Microsoft and Windows are trademarks or registered trademarks of Microsoft Corporation in the United States and/or other countries.
- Macintosh and Mac OS are trademarks of Apple Inc., registered in the U.S. and other countries.
- App Store, iPhone, and iPad are trademarks of Apple Inc.
- The SDXC logo is a trademark of SD-3C, LLC.
- Wi-Fi®, Wi-Fi Alliance®, WPA™, WPA2™ and Wi-Fi Protected Setup™ are trademarks or registered trademarks of the Wi-Fi Alliance.
- All other trademarks are the property of their respective owners.
- This device incorporates exFAT technology licensed from Microsoft.
- Portions of the code used in this firmware are based in part on the work of the Independent JPEG Group.
- Based on XySSL: Copyright (C) 2006-2008 Christophe Devine Copyright (C) 2009 Paul Bakker <polarssl_maintainer at polarssl dot org> All rights reserved.

■ Disclaimer

- Reprinting, transmitting, or storing in a retrieval system any part of this guide without the permission of Canon is prohibited.
- Canon reserves the right to change the contents of this guide at any time without prior notice.
- Illustrations and screenshots in this guide may differ slightly from the actual equipment.
- The above items notwithstanding, Canon accepts no liability for damages due to mistaken operation of the products.

Cover

Contents

Part Names

Basic Operations

Print Settings

Printing via Wi-Fi

Printing via USB
Cable

Troubleshooting

Appendix

