



QT61873V01

Canon PIXMA TS200 series PIXMA E200 series

Read **Safety and Important Information** (addendum) first.

Lea primero **Información de seguridad e información importante** (apéndice).

Lire **Sécurité et informations importantes** (addendum) en premier.

Lesen Sie **Sicherheitsinformationen und wichtige Hinweise** (Anhang) zuerst.

Lees eerst **Veiligheidsinformatie en belangrijke informatie** (addendum).

Leggere preventivamente le **Informazioni importanti e sulla sicurezza** (appendice).

Leia **Informações Importantes e Sobre Segurança** (adendo) primeiro.

Διαβάστε πρώτα τις **Πληροφορίες για την ασφάλεια και σημαντικές πληροφορίες** (συμπλήρωμα).

Läs **Information om säkerhet och annan viktig information** (bilaga) först.

Les **Sikkerhetsinformasjon og viktig informasjon** (tillegg) først.

Læs **Sikkerhedsoplysninger og vigtige oplysninger** (tillæg) først.

Lue **Turvallisuus ja tärkeitä tietoja** (lisähuomautus) ensin.

Nejprve si přečtete **Informace o bezpečnosti a důležitá sdělení** (dodatek).

Najprv si přečítajte **Informácie o bezpečnosti a dôležité informácie** (dodatok).

Najpierw przeczytaj dodatek **Informacje o bezpieczeństwie i ważne uwagi**.

Először a (mellékelt) **Biztonsági és fontos tudnivalók** című dokumentumot olvassa el!

Önce **Güvenlik ve Önemli Bilgiler** başlıklı eki okuyun.

Vispirms izlasiet rokasgrāmatu **Informācija par drošību un cita svarīga informācija** (papildinājumu).

Pirmiausia perskaitykite **Darbo saugos ir kita svarbi informacija** (priedas).

Lugege kõigepealt läbi **Ohutusteave ja oluline teave** (lisa).

Citiți mai întâi **Informații cu privire la siguranță și alte informații importante** (anexa).

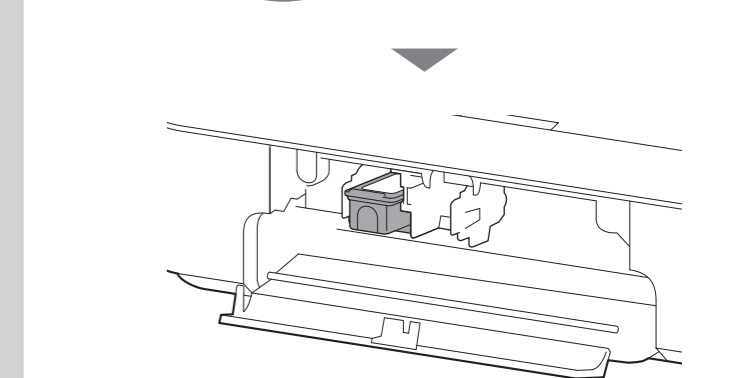
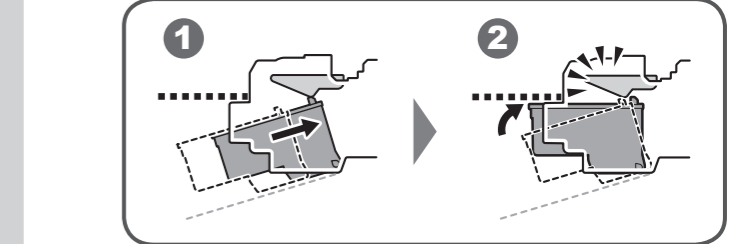
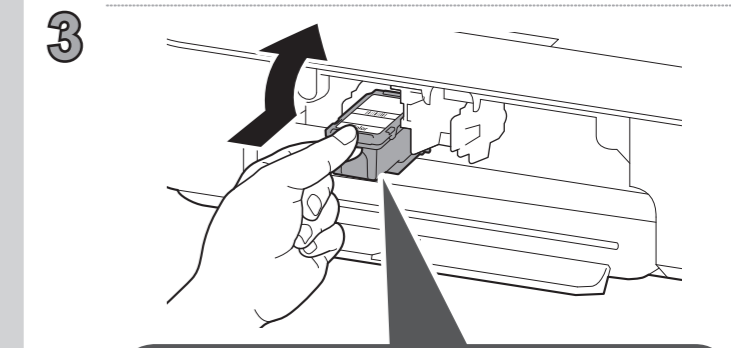
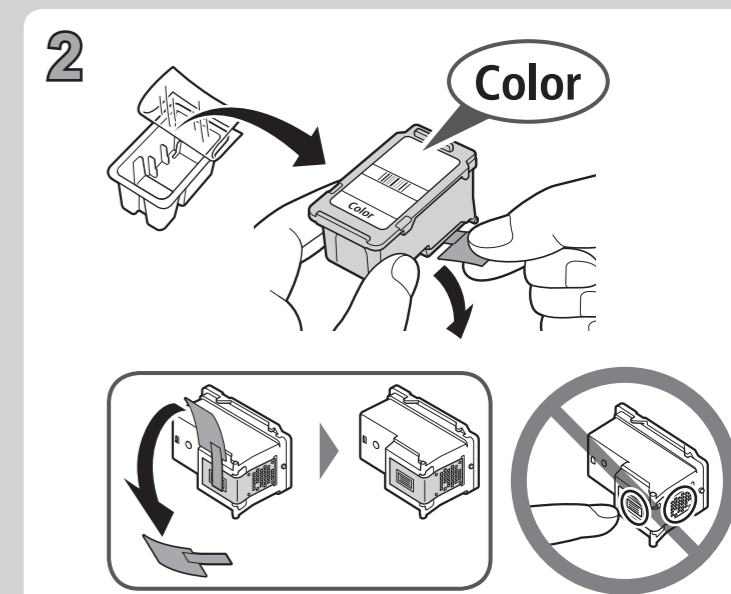
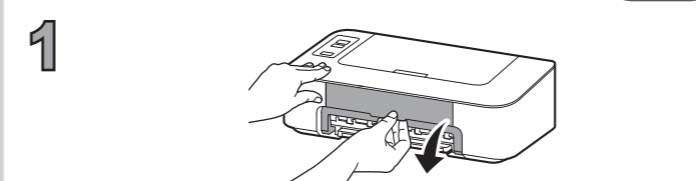
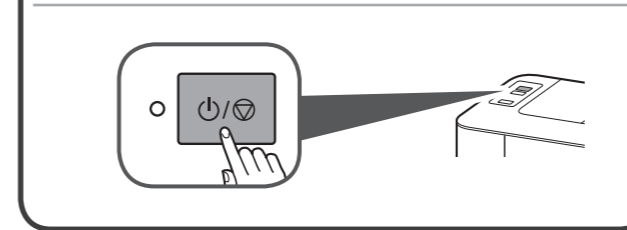
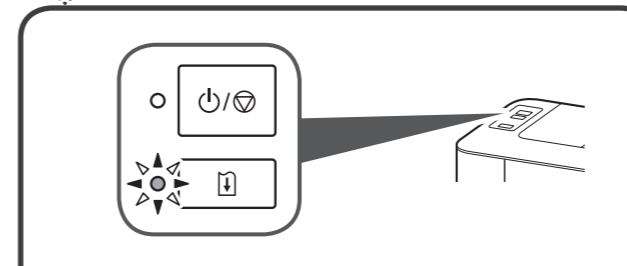
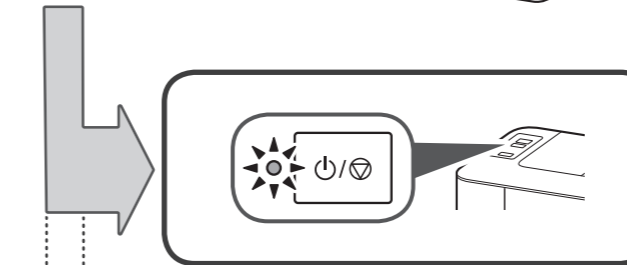
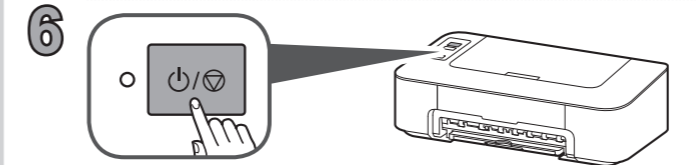
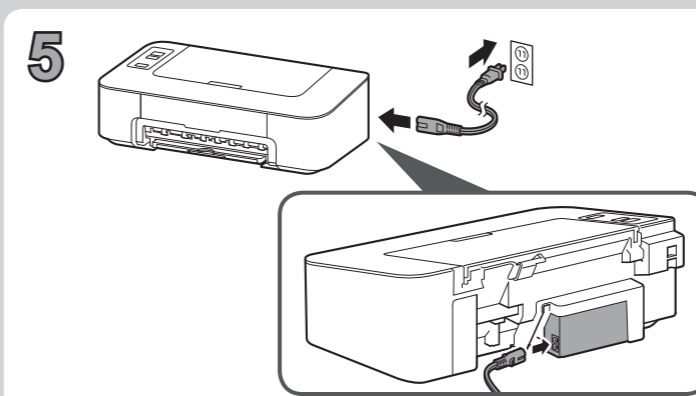
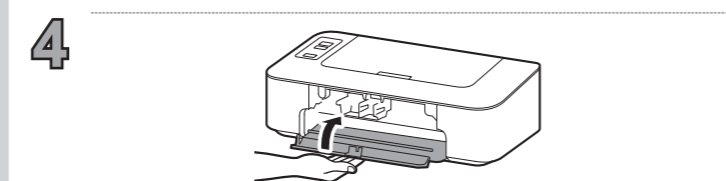
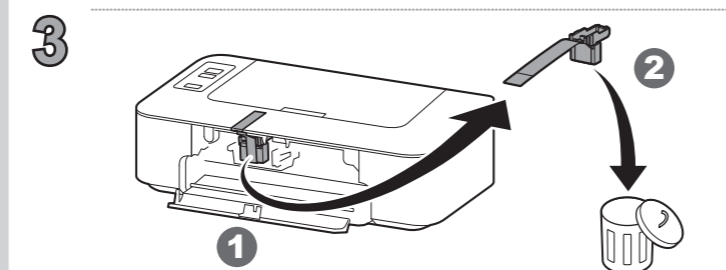
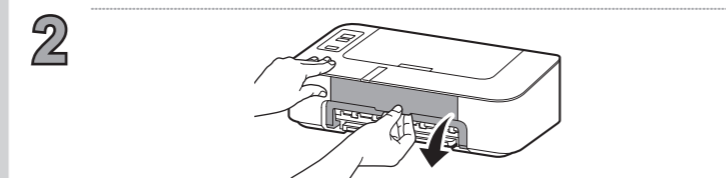
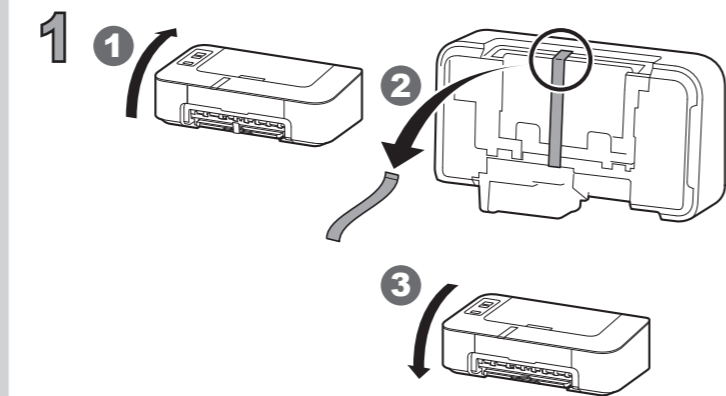
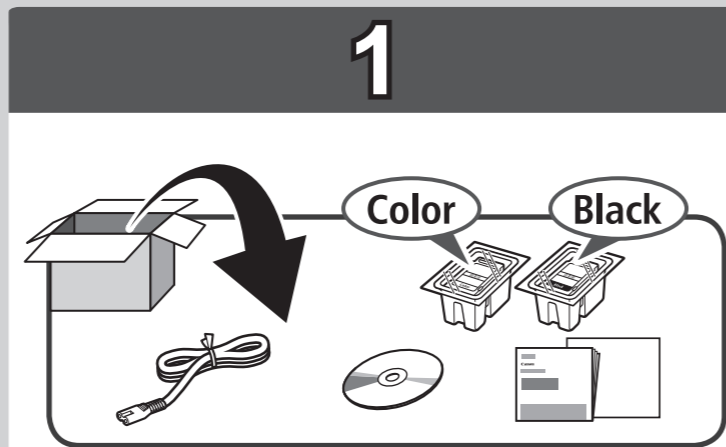
Прочетете най-напред **Информация за безопасността и важна информация** (приложение).

Najprej preberite **Informacije o varnosti in pomembne informacije** (dodatek).

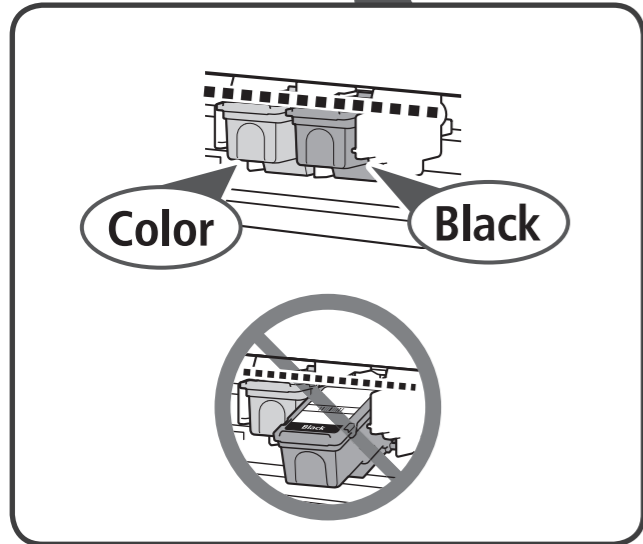
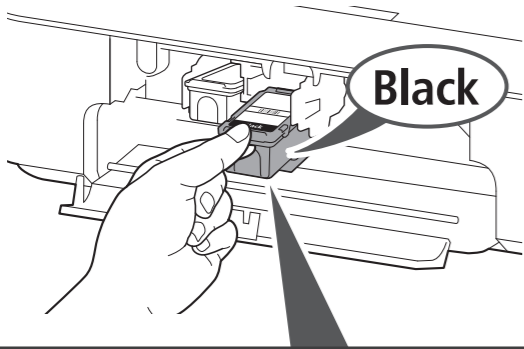
Najprije pročitajte **Sigurnosne i važne informacije** (dodatak).

RMC (Regulatory Model Code): K10466

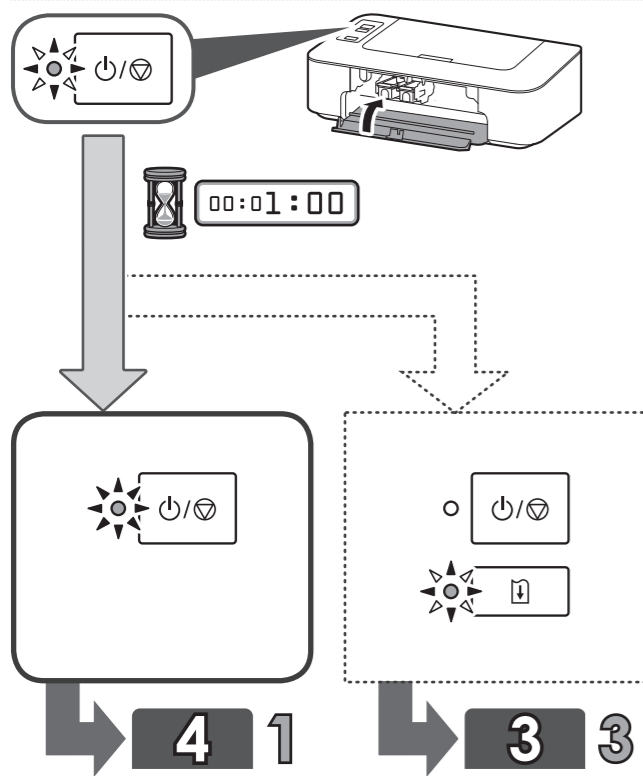
RMC (Regulatory Model Code): K10467



4



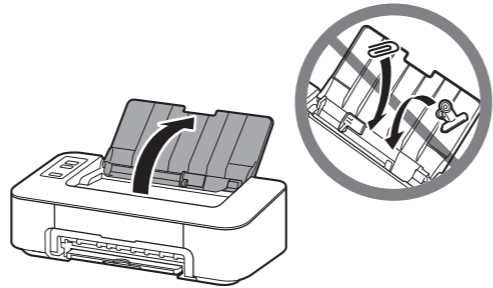
5



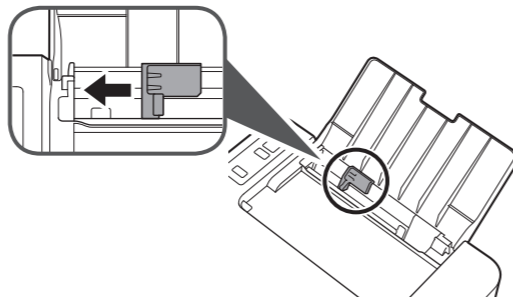
4



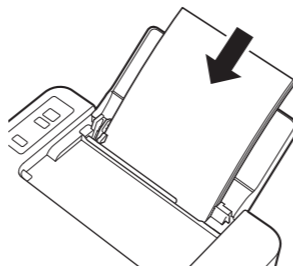
1



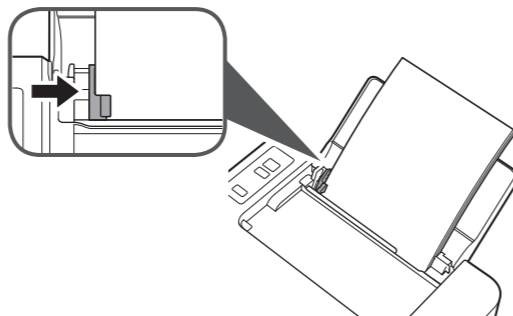
2



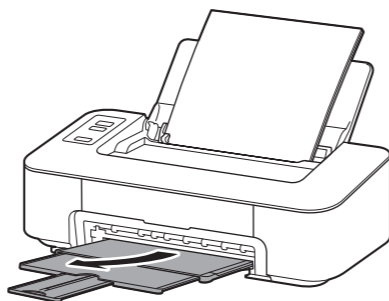
3



4



5



5

