

MultiPASS MP370
MultiPASS MP360

Set-Up Sheet

READ THIS SHEET FIRST

Thank you for purchasing the Canon MultiPASS MP370/360. To prepare your machine for use, please follow the instructions in this *Set-Up Sheet* before referring to any other documentation.



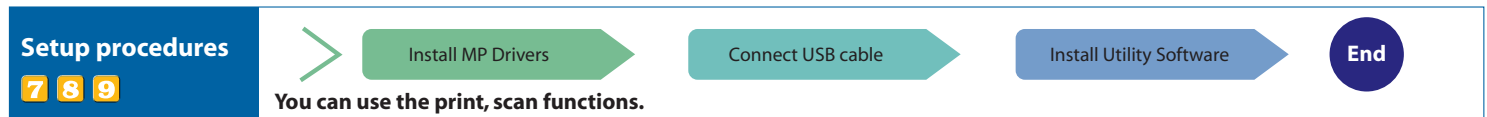
IMPORTANT Do not connect the USB cable until **8**, "Connect the USB cable."

Setup flow

This side explains the setup procedure for use without connecting to a computer. <Check packed contents, install and adjust machine>



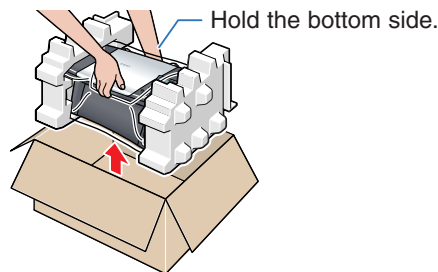
This side explains the setup procedure for use by connecting to a computer. <Install MP Drivers and Utility Software>



1

Unpack and install the machine.

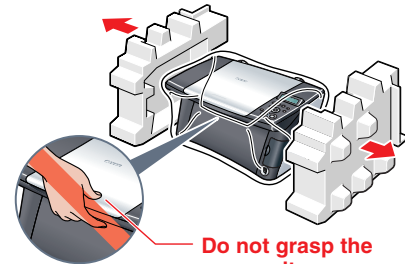
1 Carefully remove all items from the box.



NOTE

- When removing the machine from the box, take sufficient care not to drop it.

2 Remove the protective material.



NOTE

- After removing the protective material, do not lift the machine by grasping the scan unit.

3 Place the machine on a flat surface.



- Be sure to hold the machine by the sides. Set nothing in front of the machine.

4 Remove all shipping tape from the exterior of the machine.

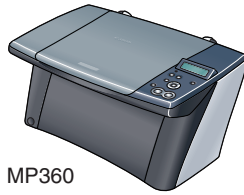


- After removing the tape, remove the protective sheet.

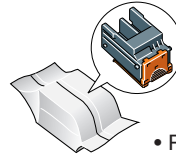
Check the contents.



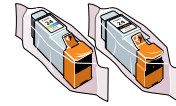
• MP370



• MP360



• Print head



• Ink tanks
BCI-24 Black
BCI-24 Color

- Power cord
- Set-Up Sheet
- User's Guide



• Setup
CD-ROM

The Setup CD-ROM contains the MP Drivers, as well as the electronic manuals *Software Guide* and *Photo Application Guide*. Please read these guides.

NOTE

- In this sheet, illustrations of MP370 are shown.
- A printer cable is not included. You must purchase a USB cable (less than 16 ³/₈ ft./5 m) to connect your machine to a computer.

2

Connect the power cord.

- 1 Connect the power cord.



If the message <PUT IN CARTRIDGE> appears, go to procedure 3, "Install the print head."

PLEASE WAIT

▼ Approx. 15 seconds

PUT IN CARTRIDGE

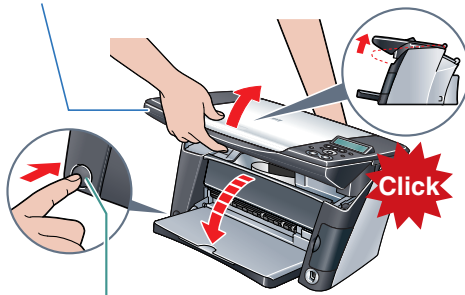
3

Install the print head.

1 Lift the scan unit until it locks into place.

- If a protective sheet is on the inner side of the scan unit, remove the protective sheet.

Lift the scan unit.



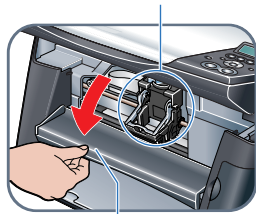
If the paper output tray does not open, press the Open button to open the paper output tray.

NOTE

- If you open the scan unit while the machine is turned ON, the paper output tray will open.

2 Open the inner cover.

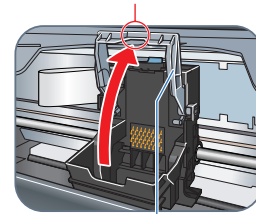
2 The print head holder moves to the center. Install here.



1 Open the inner cover.

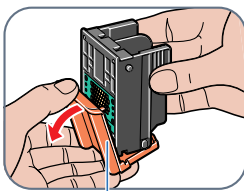
3 Raise the lock lever.

Touch only here!

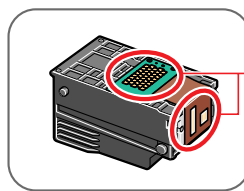


Raise this securely.

4 Prepare the print head.

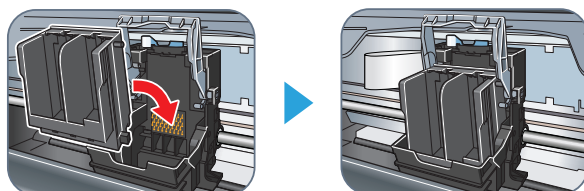


Remove the protective cap and dispose of it.

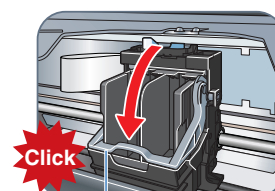


Do not touch!

5 Insert the print head.



6 Lower the lock lever.

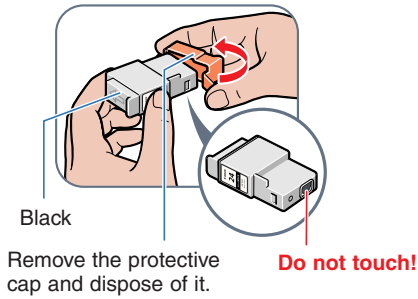


Lower the lock lever until it locks into place.

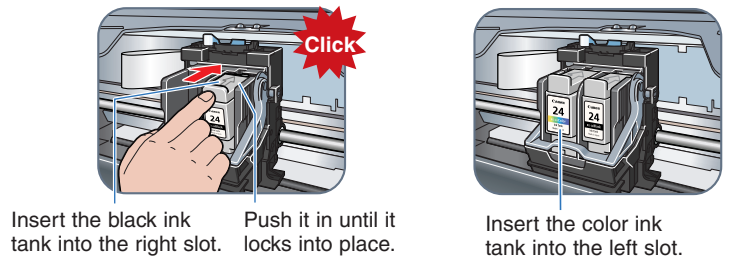
4

Install the ink tanks.

1 Prepare the ink tanks.

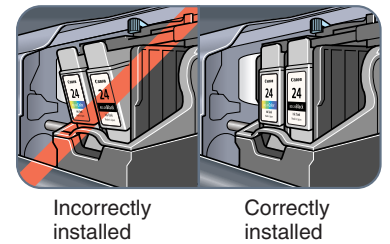
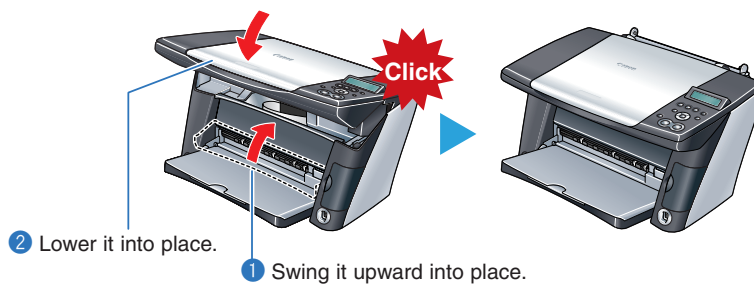


2 Insert the ink tanks.



NOTE

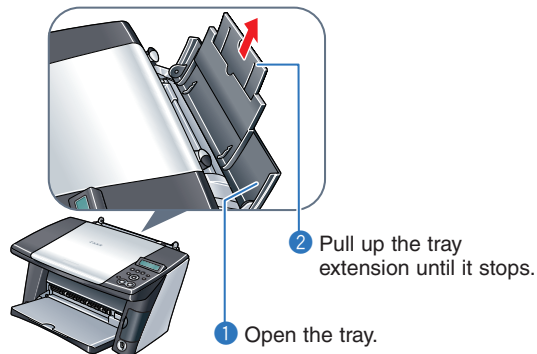
3 Close the inner cover ① and the scan unit ②.



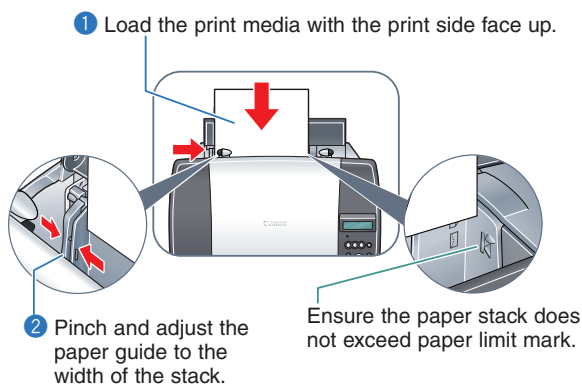
5

Load the print media.

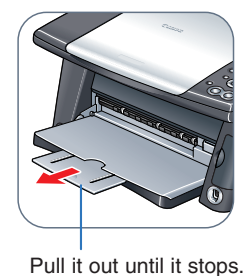
1 Open the multi-purpose tray.



2 Load the print media.



3 Pull out the tray extension of the paper output tray.



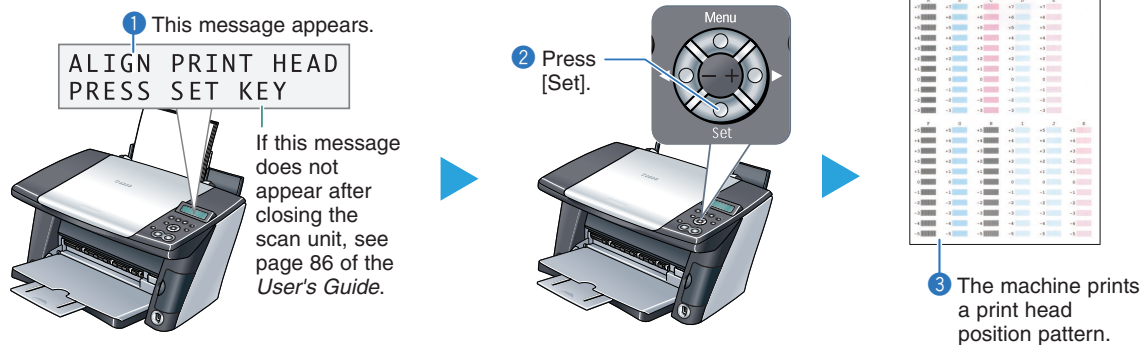
Rear side →

6

Align the print head from the operation panel.

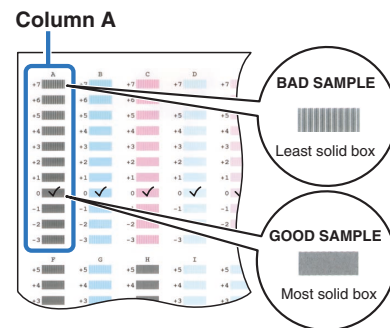
Be sure to align the position of the print head to ensure quality printing.

1 Print the print head position pattern.



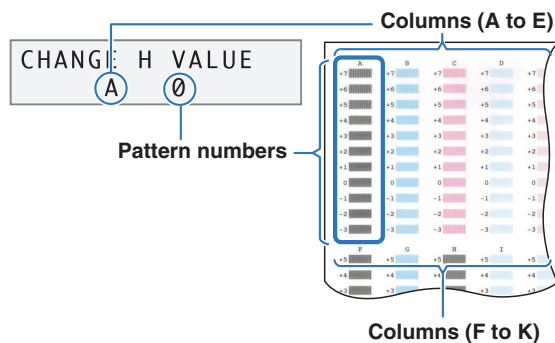
2 Enter checkmarks in the printed patterns.

- From column A to column K on the printout, enter checkmarks in the patterns that have the most solid image.

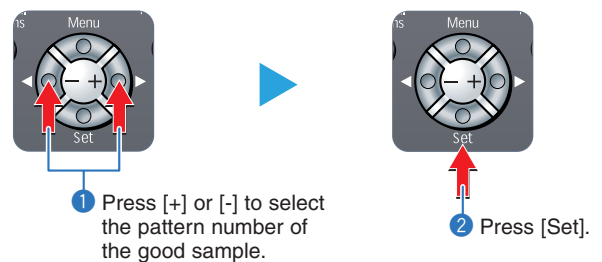


3 Align the print head.

- In column A on the printout, select the pattern that you checked on the printout in step 2, then press [Set].



Press [+] to increase the number one digit.
Press [-] to decrease the number one digit.



4 Repeat step 3 for columns B to K.



You have completed installation and alignment.

If you are connecting the machine to a computer for use, see **7**, **8** and **9** for instructions on installing the software.

7

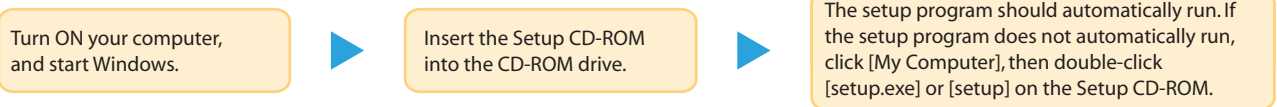
Install the MP Drivers.

The MP Drivers must be installed on the hard disk of your computer in order to print from or scan images to the computer. In addition to installing the MP Drivers, install the MP Toolbox. Use the MP Toolbox to attach scanned images to e-mail and store them.

IMPORTANT

- For detailed system requirements, see page 64 of the *User's Guide*.
- When installing the software in Windows 2000, you must have Service Pack 1 or later version installed.
- When installing the software in Windows 2000, you must log on as Administrator or have Administrator privileges.
- When installing the software in Windows XP, you must log on as Administrator privileges.
- If you have an earlier version of the MultiPASS Suite software installed on your computer, uninstall this version before installing the new version. For instructions on uninstallation, see the guides for that version of MultiPASS Suite.
- On your computer, close any open software applications, including virus checkers, in advance. For details, see the instruction guide for each software application (or consult the system administrator).
- If using the machine with USB 2.0 Hi-Speed mode, you must connect it to a computer standard-equipped with a USB 2.0 Hi-Speed interface.

Prepare the Setup CD-ROM (Installation preparation)



If the following screen appears:



The USB cable is connected.

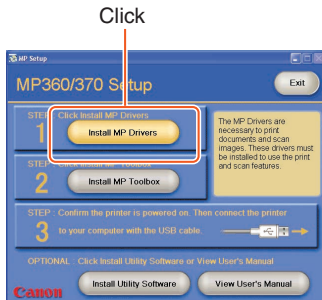
Perform the following steps.

1. Disconnect the USB cable.
2. Click [Cancel].

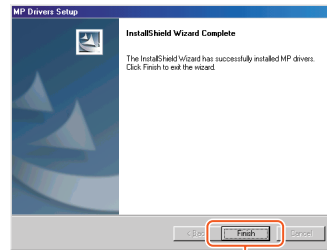
1 Install the MP Drivers. (Use when printing from PC applications or scanning images.)

Follow the on-screen instructions to install the software.

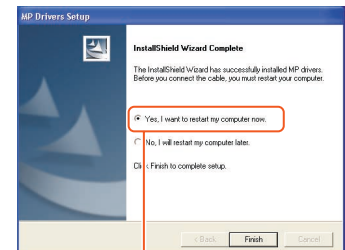
When the InstallShield Wizard Complete window appears, click [Finish].
If you are prompted to restart your computer after the installation, restart your computer.



When restarting your computer is not necessary:



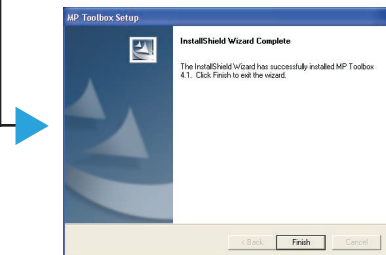
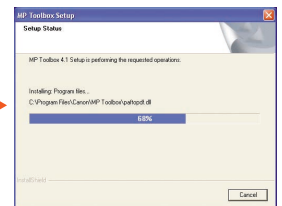
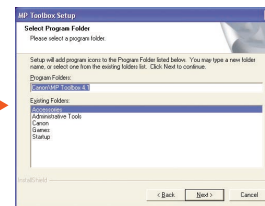
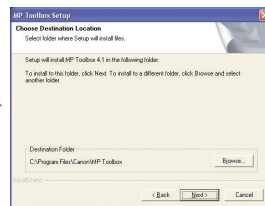
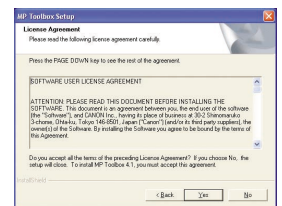
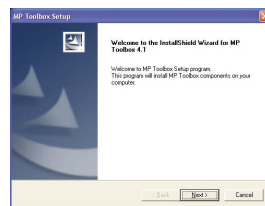
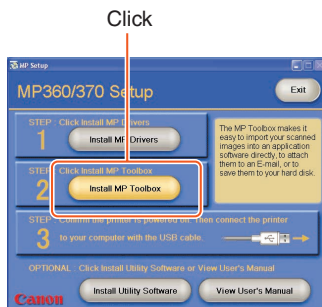
When restarting your computer is necessary:



Select [Yes, I want to restart my computer now.].

2 Install the MP Toolbox. (Use to scan documents and send as e-mail or save as PDF files.)

Follow the on-screen instructions to install the software.

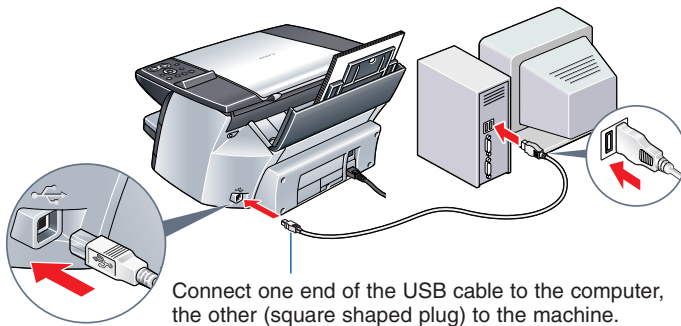


When the InstallShield Wizard Complete window appears, click [Finish].
If you are prompted to restart your computer after the installation, restart your computer.

3 Connect the USB cable

8

Connect the USB cable.



Connect one end of the USB cable to the computer, the other (square shaped plug) to the machine.

Make sure both your machine and computer are turned ON. When connecting the USB cable, the computer will automatically set necessary information. Please wait shortly. Click [OK] if you are prompted to restart your computer.

In Windows 2000, the machine may not be set as [Set As Default Printer]. For details, see the *Software Guide*.

9

Install the utility software.

Utility software also is stored on the Setup CD-ROM. You can select not to install the utility software at this stage and install it later.

● Outline of utility software

Easy-PhotoPrint / Easy PhotoPrint Plus*	Easy-PhotoPrint allows you to make high-quality borderless (full page) prints easily by simply selecting the paper type and image you recorded with your digital camera.
Easy-WebPrint	Easy-WebPrint allows you to print a whole web page from Microsoft Internet Explorer (version 5.5, version 6.0 recommended) quickly and without any complicated settings.
ScanSoft OmniPage SE	ScanSoft OmniPage SE is an OCR (Optical Character Recognition) program which can convert the text in books or newspaper characters into text data.
ArcSoft PhotoStudio	ArcSoft PhotoStudio allows you to import images from your scanner and digital camera to enhance them in various ways, blend them together, convert their data format, or add them to an album.
Adobe Acrobat Reader	The Adobe Acrobat Reader displays documents in PDF (Portable Document Format) form.

The *Photo Application Guide* is contained on the Setup CD-ROM.

*U.S.A. only

● Install the utility software.

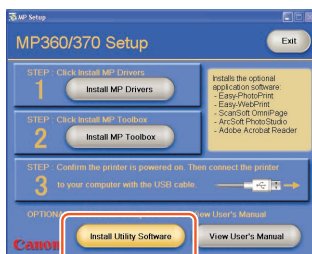
Click [Install Utility Software].

Select the software to install.

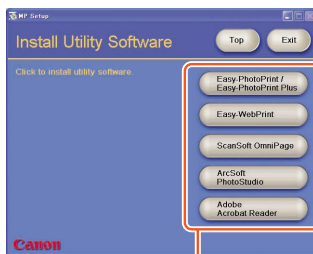
When the InstallShield Wizard Complete window appears, click [Finish].**

If you are prompted to restart your computer after the installation, restart your computer.

** This procedure varies depending on the application software.

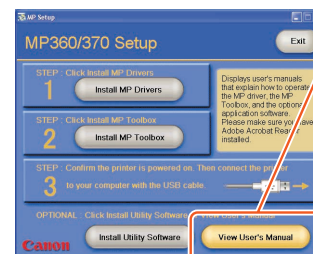


Click



Click

To view guides



Click this to read the guides stored on the Setup CD-ROM, such as the *Photo Application Guide*.

You now have completed installation of the software.

For details of the operations, see the *User's Guide*.



When installation of the MP Drivers completes, the icon appears on the desktop. You can register your machine online by double-clicking this icon.