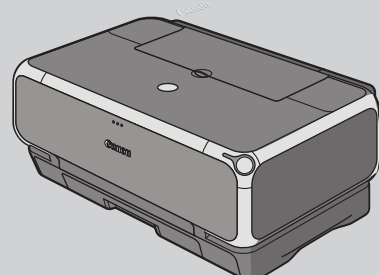
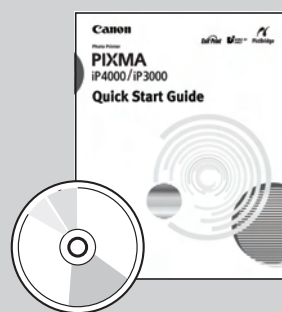


1 Unpack the Printer

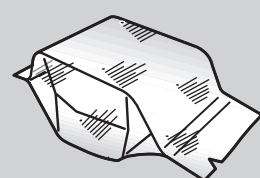
- Carefully remove all items from the box.



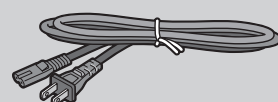
PIXMA iP4000 Series Photo Printer



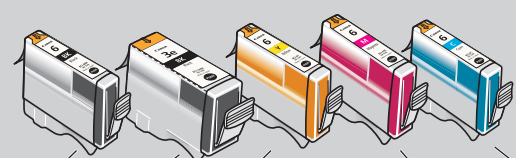
Documentation and Software Kit



PIXMA iP4000 Series Print Head



Power Cord

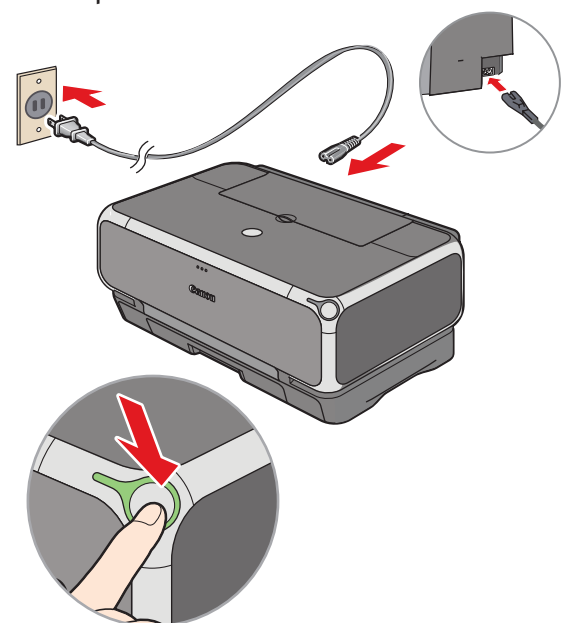


Ink Tanks

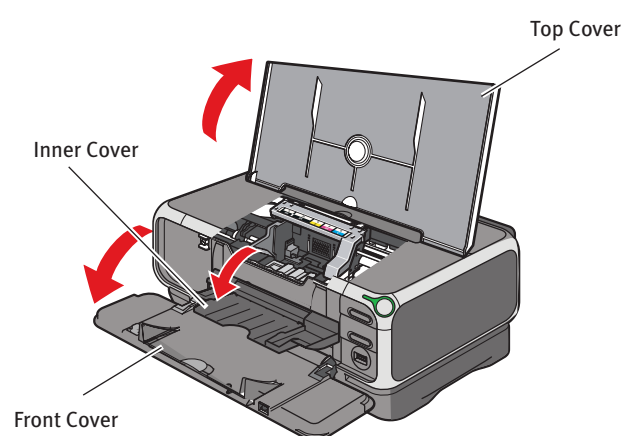
BCI-6BK Black BCI-6Y Yellow BCI-6M Magenta
BCI-3eBK Black BCI-6C Cyan

2 Prepare the Printer

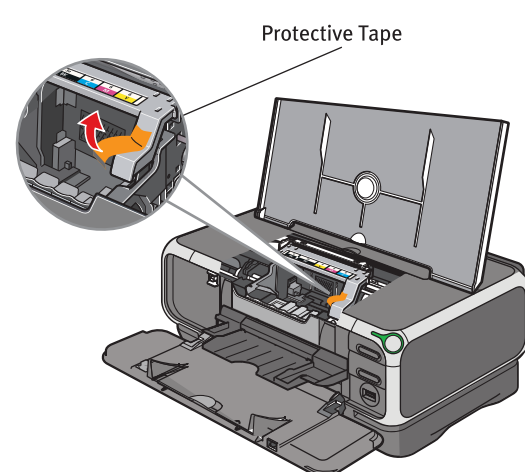
- Remove all shipping tape and clear plastic from the printer.
- Plug the power cord into the back of the printer and connect the other end to a power outlet. Press the POWER button. The printer will initialize.



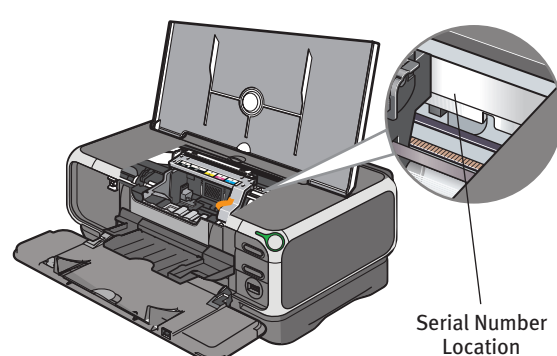
- Lower the front cover. Raise the top cover. Remove the shipping tape and lower the inner cover.



- The print head holder automatically moves to the center. Remove the protective tape.

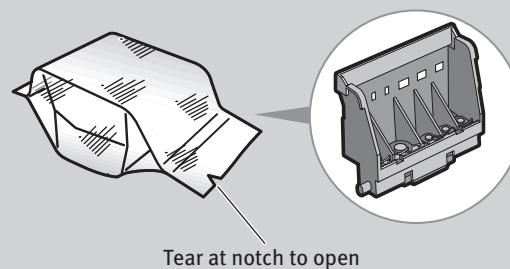


- Write down the serial number located to the right of the print head holder. You will need this later to register the product.



3 Install the Print Head

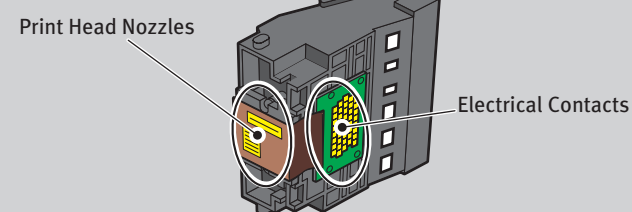
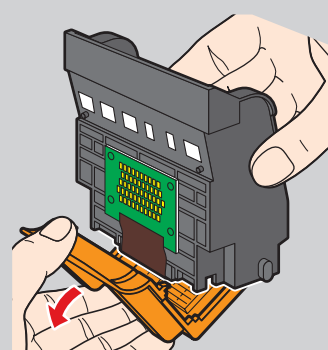
- Remove the print head from its package.



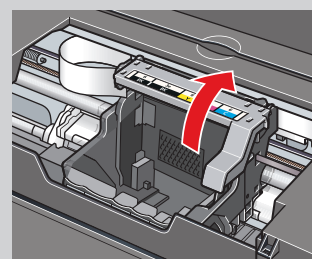
Tear at notch to open

- Remove the orange protective cap from the print head.

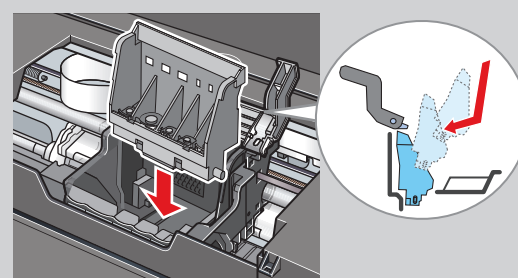
NOTE: Do not touch the print head nozzles and the electrical contacts.



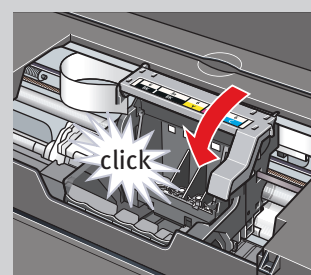
- Raise the print head lock lever.



- Slide the print head into the holder. The print head will rest at a slight angle.

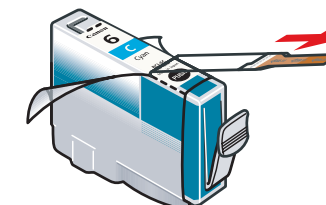


- Lower the print head lock lever and press it down until it clicks into place.



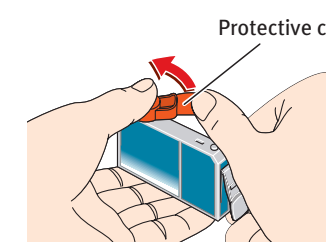
4 Install the Ink Tanks

- Peel back the orange tab and completely remove the plastic wrapper from the Cyan Ink Tank (BCI-6C).



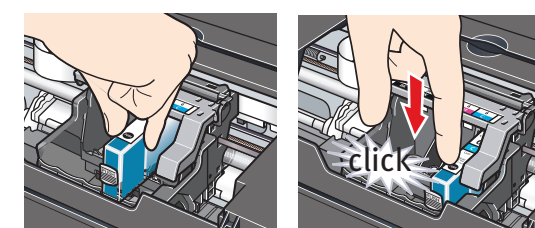
- Twist off and discard the orange protective cap.

NOTE: To avoid spilling ink, never press on the sides of an ink tank.

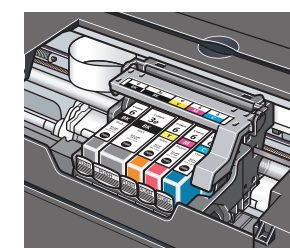


- Insert the ink tank into the correct slot. (Refer to the color guide on the print head holder).

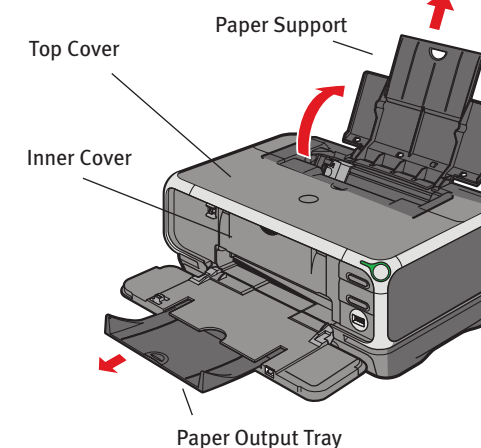
Press down until the ink tank clicks into place.



- Insert the remaining four ink tanks into their assigned slots.



- Close the inner cover, then the top cover. Lift open the paper support and extend the paper output tray.



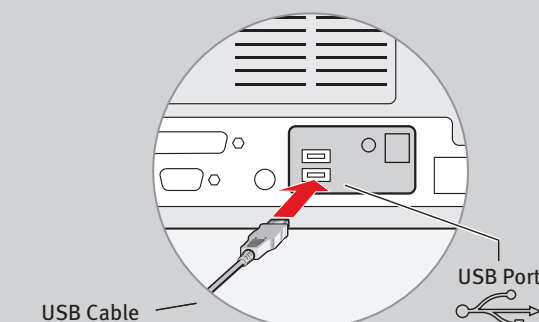
NOTE: The printer will perform a print head cleaning. Wait until the POWER lamp displays a steady green light before proceeding.

5 Connect the Printer and Load Paper

IMPORTANT: Be sure the printer is off before continuing, or the computer will attempt to install the printer driver before the printer is ready.

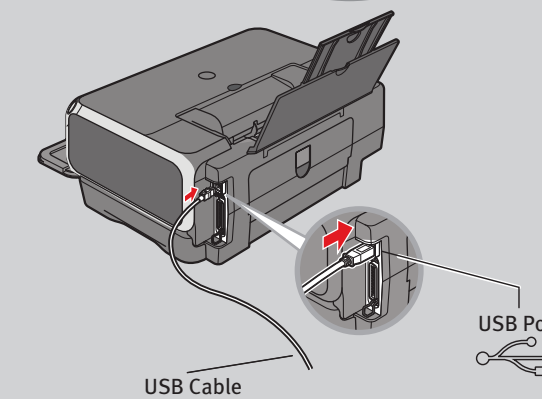
For USB Port:

- TURN THE PRINTER OFF.
- Connect one end of the USB cable to the computer, the other to the printer.



USB Cable

USB Port

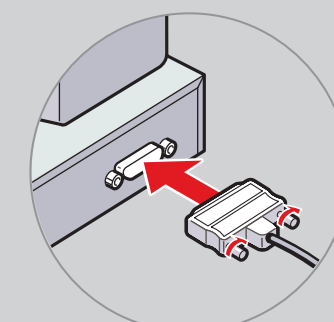


USB Cable

USB Port

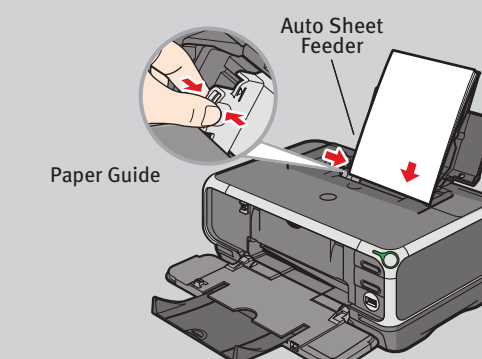
For Parallel Port:

- TURN THE PRINTER OFF.
- Connect one end of the parallel cable to the computer, the other to the printer.



Parallel Cable

- Remove the shipping tape from the paper guide. Pinch the paper guide and slide it to the left. Load a few sheets of blank paper into the auto sheet feeder, then slide the paper guide toward the left edge of the paper.



Paper Guide

Auto Sheet Feeder

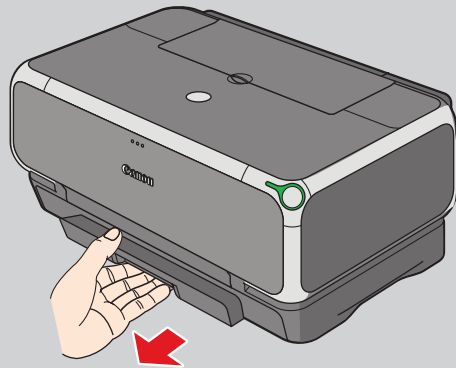
Continue with Step 6 on side two.



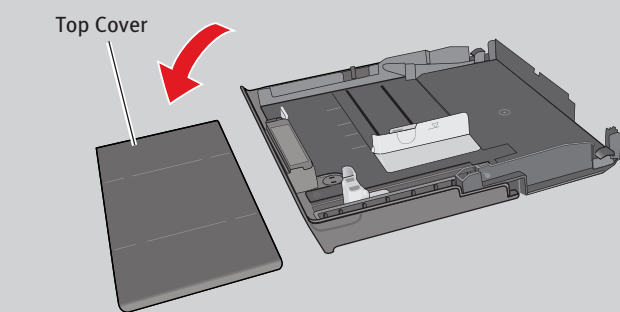
6 Cassette Loading

NOTE: Loading paper in the cassette provides additional paper handling flexibility. For additional information visit the electronic *User's Guide*.

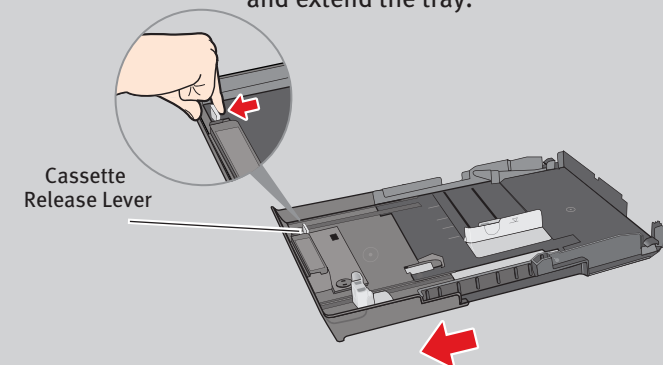
- 1 Pull out the cassette from the bottom of the printer.



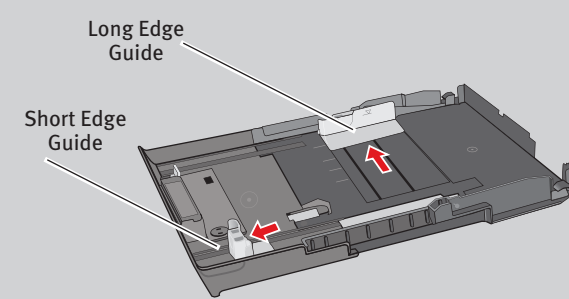
- 2 Remove the top cover of the cassette.



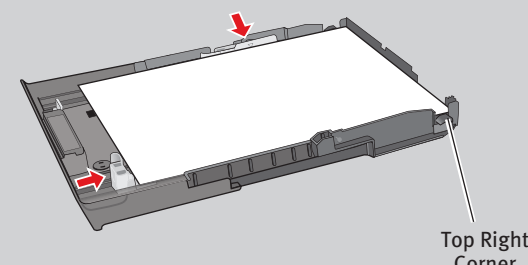
NOTE: For letter-size (8.5" x 11") paper, push the cassette release lever and extend the tray.



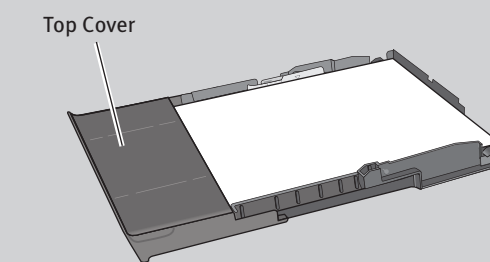
- 3 Slide the long edge paper guide to the left and the short edge paper guide toward you.



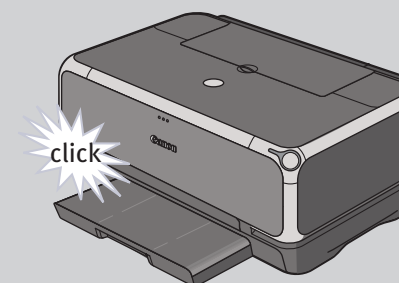
- 4 Load paper so that the top right corner touches the inside corner of the cassette. Adjust paper guides to the edges of paper.



- 5 Replace the top cover of the cassette.

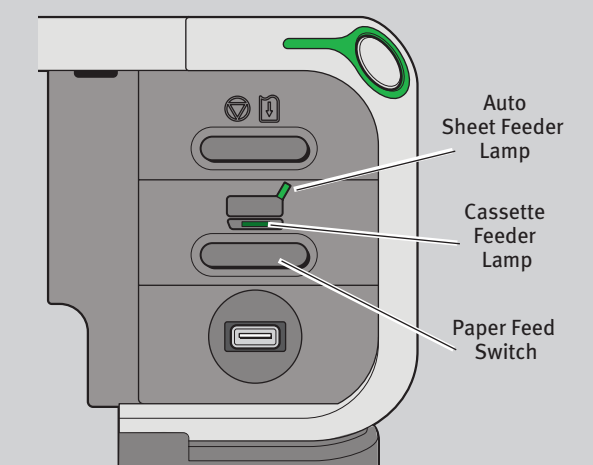


- 6 Insert cassette completely into the printer until it clicks into place.



NOTE: For letter-size (8.5" x 11") paper, the front edge of the cassette will extend beyond the bottom of the printer.

- 7 Ensure that the auto sheet feeder lamp is lit. If not, press the paper feed switch.



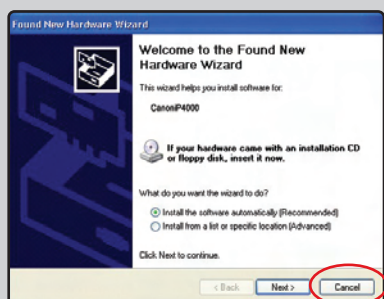
IMPORTANT: To successfully complete the next step, Software Installation, ensure 8.5" x 11" paper is loaded in the Auto Sheet Feeder (top paper feeder).

7 Windows® Printer Driver Installation and Print Head Alignment

- 1 Be sure to **TURN THE PRINTER OFF** before continuing.

NOTE: For Windows® XP or Windows 2000, log on to Windows as a member of the Administrators group before continuing.

IMPORTANT: If you see the Found New Hardware Wizard, click **Cancel**.



- 2 Close any open software applications including anti-virus, computer security and other software. Then insert the Setup Software & User's Guide CD-ROM. The setup program should run automatically.

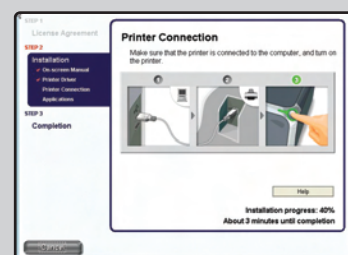
NOTE: If the setup program does not run, click **Start**, then **Run**, then type **D:\msetup.exe**, where **D** is your CD-ROM drive.

- 3 When the main menu appears, click **Easy Install**.



NOTE: Select **Easy Install** in order to install all of the application software, electronic manual and printer driver. Select **Custom Install** in order to choose the options you would like to install.

- 4 When the "Printer Connection" window appears, **TURN THE PRINTER ON**. The software will begin identifying the printer port being used.

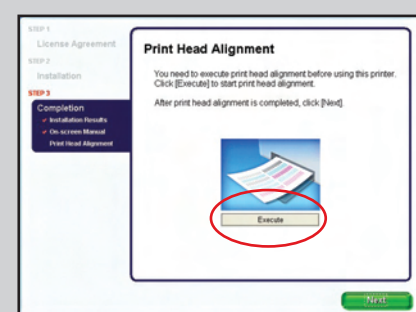


IMPORTANT: If your computer cannot detect a printer port, click **Help** and refer to the online instructions.

- 5 Follow the on-screen instructions to install the remaining software. When the "Installation Results" window appears, click **OK**.

- 6 Follow the on-screen instructions to register your product.

- 7 When the "Print Head Alignment" screen appears, ensure that letter size paper is loaded in the auto sheet feeder (top paper feeder). Click **Execute** and follow on-screen instructions.



NOTE: Print head alignment will take several minutes to complete.

- 8 When the "Installation completed successfully" screen appears, click **Restart**.

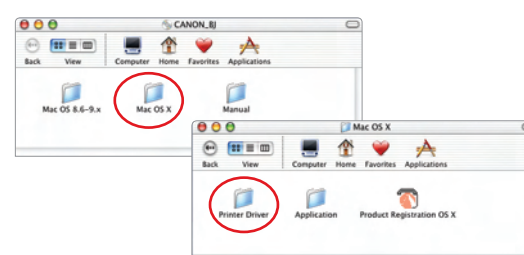
7 Macintosh® Printer Driver Installation and Print Head Alignment

NOTE: For Mac OS 9.x printer driver instructions, refer to the "Appendix" of the *Quick Start Guide*.

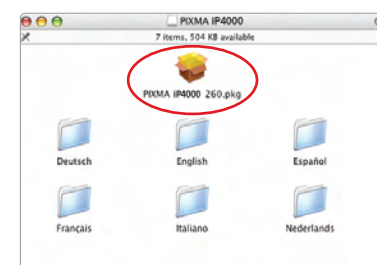
- 1 Turn on your Mac and your printer and insert the "Setup Software & User's Guide" CD-ROM.

NOTE: Log on as an Administrator before continuing.

- 2 Double-click the CD-ROM icon, then the **Mac OS X** folder, then the **Printer Driver** folder.



- 3 Double-click the **iP4000 260.pkg** icon, then follow the on-screen instructions.



NOTE: When the "Authenticate" screen appears, enter your administrator name and password. If you do not know your administrator name or password, click **?**, then follow the on-screen instructions.

- 4 When the message "The software was successfully installed" appears, click **Restart**.

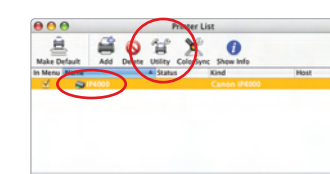
- 5 When a message asking you to align the print head appears, click **OK**.



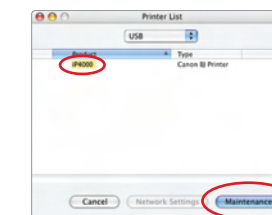
- 6 Start the print head alignment procedure.

a. Double-click the **Macintosh HD** icon, then **Applications** folder. Double-click the **Utilities** folder, then the **Printer Setup Utility** icon.

b. When the Printer List screen appears, select **PIXMA iP4000**, then click the **Utility** icon.

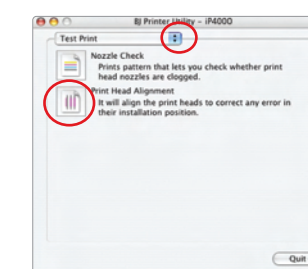


c. Select **PIXMA iP4000** and click **Maintenance**.



d. Ensure that letter size paper is loaded in the auto sheet feeder (top paper feeder).

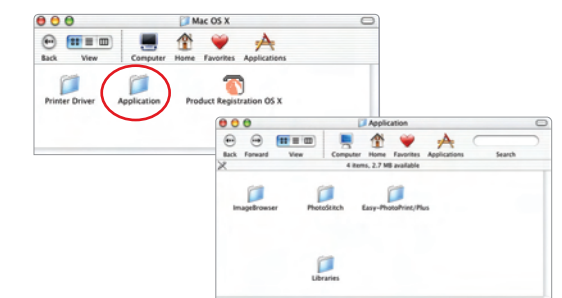
e. Click the down-arrow to select **Test Print**. Click the **Print Head Alignment** icon and follow the on-screen instructions.



NOTE: Print head alignment will take several minutes to complete.

- 7 Click **Quit** to exit the BJ Printer Utility. Print head alignment is now complete.

- 8 Access your CD-ROM again. From the **Application** folder on the CD-ROM, double-click on the software to be installed.



- 9 Follow the on-screen instructions. When the "Installation has finished" screen appears, click **OK**.

- 10 Double-click on the **Product Registration** icon, found in the **Mac OS X** folder, to register your product.