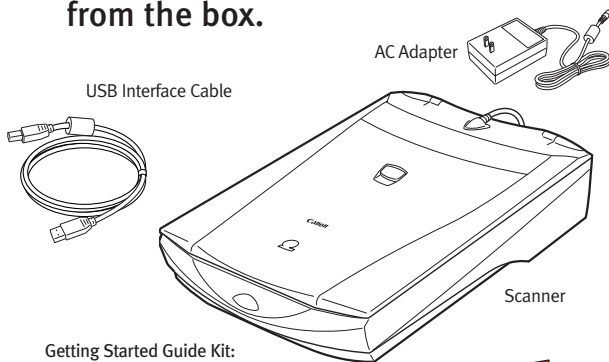


1 Unpacking

1 Carefully remove all items from the box.



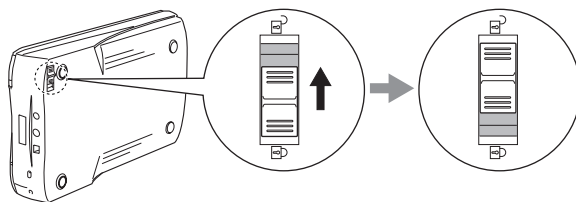
Getting Started Guide Kit:

- Getting Started Guide
- Canon Software Solutions CD-ROM—
 - Macintosh® Plug-in Module: Scanning software for Macintosh
 - PC TWAIN driver: Scanning software for Windows®
 - CanoScan® Toolbox CS (Macintosh) and ScanGear® Toolbox CS (Windows): One-click software for easier scanning; loads software and scans and prints images
 - ScanGear Toolbox FAU: 35 mm film-scanning software; use with built-in adapter
 - ArcSoft PhotoStudio™ 2000: Image editing software
 - ArcSoft PhotoBase™: Image organization software; create image albums and slide shows
 - Caere OmniPage Pro: Text scanning software (optical character recognition)
 - Adobe Acrobat Reader: Software for viewing scanner manuals in electronic format



2 Unlocking the Scanning Unit

1 Gently turn the scanner on its side and unlock the scanner (🔓).

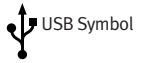


- ➔ **Caution!** Be sure to unlock the scanner before plugging in the USB interface cable. Operating the scanner while in the locked position may damage the equipment.

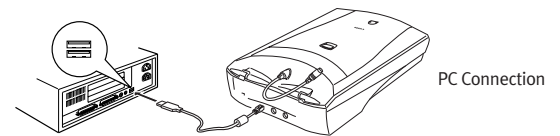
3 Connecting the Scanner

Note: Before you begin, make sure you've turned on the computer and have quit all applications.

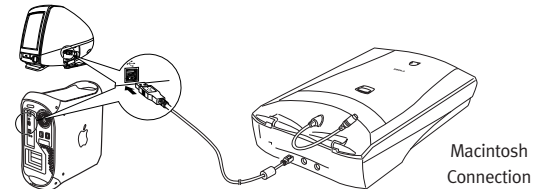
- 1 Locate the USB symbol on your computer and scanner. Connect the supplied USB interface cable to the computer's USB port.



Note: Multiple USB ports may be located on the front, side, or back of your computer.



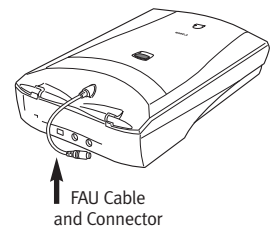
PC Connection



Macintosh Connection

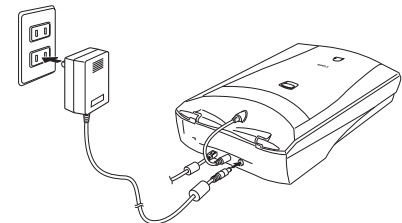
- 2 Connect the other end of the USB interface cable to the scanner's USB port.

- 3 Attach the Film Adapter Unit (FAU) connector cable to the FAU connector on the scanner's rear panel.



FAU Cable and Connector

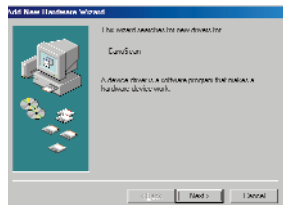
- 4 Connect the AC adapter to the scanner.



- 5 Turn on your computer.
- 6
- For Windows setup, go to Step 4.
 - For Macintosh setup, skip to Step 6.

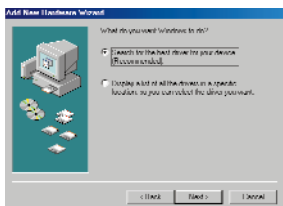
4 Installing the Scanner Software for Windows®

- 1 When you see this dialog box, insert the Software Solutions CD-ROM. Click **Next**.

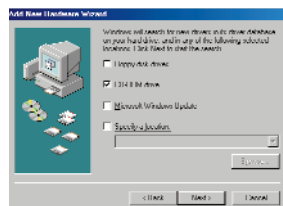


Note: If you don't see this dialog box or accidentally close it, unplug the USB cable and then reconnect it.

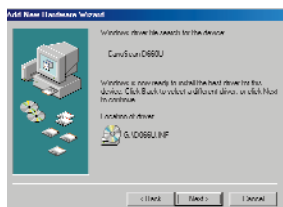
- 2 Select **“Search for the best driver...”**. Click **Next**.



- 3 Select **CD-ROM drive**. Click **Next**.



- 4 Click **Next**.



- 5 Click **Finish**.

- 6 When you see this dialog box, click **Install the Software**.

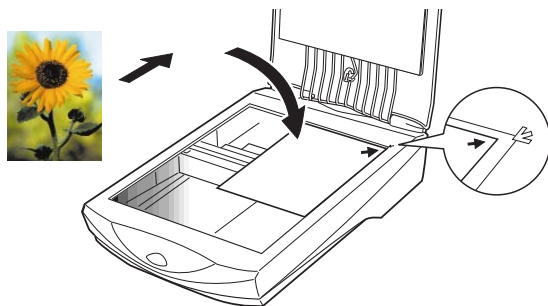


- 7 Click **Start Installation**.
- 8 Follow the on-screen instructions.
- 9 Restart your computer.

5 Your First Scan for Windows

Step 1: Placing the Image

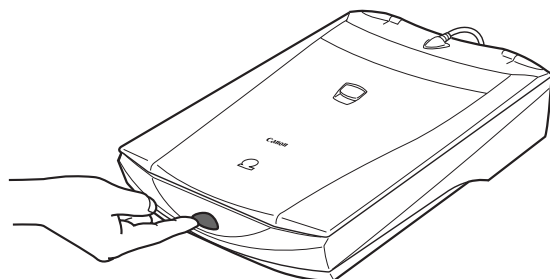
- 1 Open the document cover.
- 2 Place your picture face down on the glass of your scanner. Line up the top of your image with the arrow on the scanner bed.



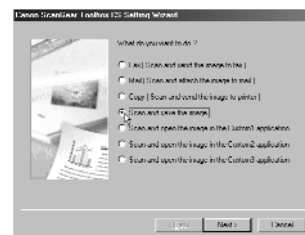
- 3 Close the document cover.

Step 2: Scanning the Image

- 1 Press the scanner's **Start** button.

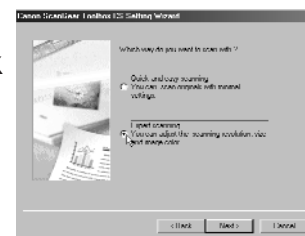


- 2 Select **Scan and Save the Image**. Click **Next**.



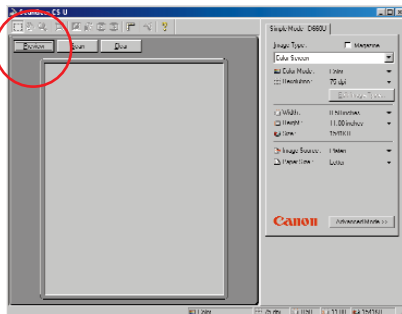
- 3 Click **Next**.

- 4 Select **Expert Scanning**. Click **Next**.



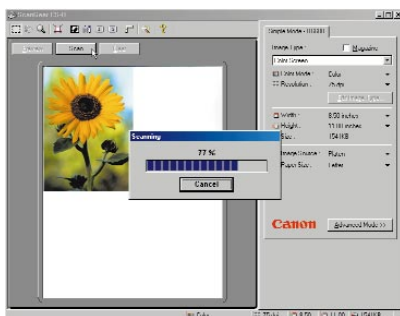
6 Installing the Scanner Software for Macintosh®

- 5 Click the **Preview** button.



- 6 Use the mouse to draw a box around the portion of the image you want to scan.

- 7 Click the **Scan** button.



- 8 To scan another image, or to scan the current image at a different resolution, repeat Steps 1 - 7.

Step 2: Viewing Scanned Images

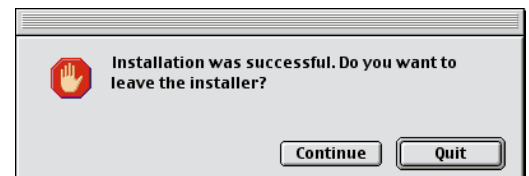
- 1 Double-click each of the following:
 - a. **My Computer** on the desktop
 - b. **C:** drive icon
 - c. **My Documents** folder
 - d. **My Pictures** folder
 - e. **Save0001** file
- 2 The Windows Paint program opens and displays the scanned image.
- 3 • For film scanning operation, go to Step 8.
• For scanner tips, go to Step 9.

- 1 Insert the Software Solutions CD-ROM into your CD-ROM drive.



Note: If the CanoScan Setup Utility does not start automatically, double-click the **CD-ROM icon**, then the **Setup** icon.

- 2 Click the **Install the Software** button.
- 3 Click the **Start Installation** button.
- 4 Finish the installation by following the on-screen instructions.
- 5 After all applications have installed successfully, click the **Quit** button.

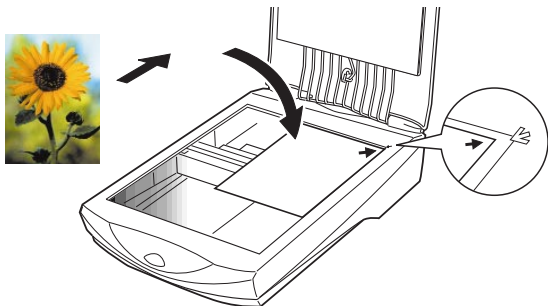


- 6 When prompted, restart your computer.

7 Your First Scan for Macintosh

Step 1: Placing the Image

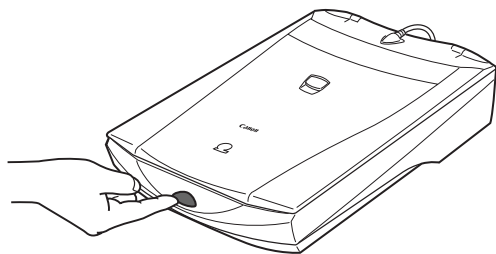
- 1 Open the document cover.
- 2 Place your picture face down on the glass of your scanner. Line up the top of your image with the arrow on the scanner bed.



- 3 Close the document cover.

Step 2: Scanning the Image

- 1 Press the scanner's **Start** button.



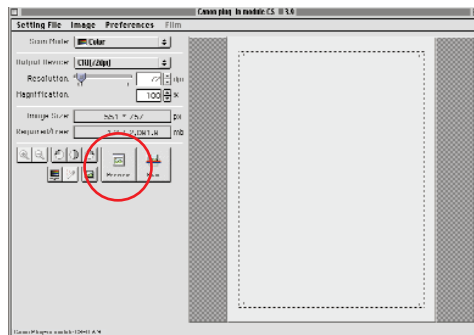
- 2 Select **Scan and Open the Image in Toolbox editor**. Click **Next**.



- 3 Select **Expert Scanning**. Click **Next**.



- 4 Click the **Preview** button.

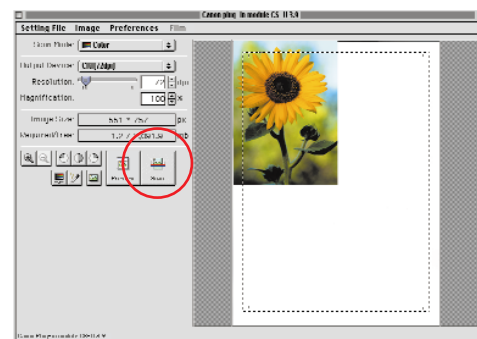


- 5 Use the mouse to draw a box around the portion of the image you want to scan.

- 6 Slide the Resolution bar to:
 - **200 dpi**—for an inkjet printer
 - **72 dpi**—for e-mail or Web



- 7 Click the **Scan** button.



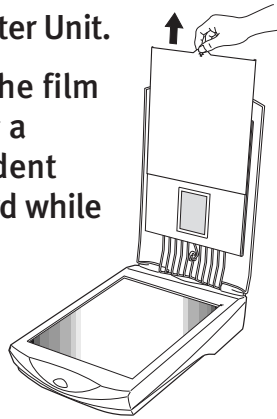
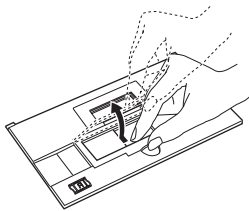
- 8 In the **File** menu, select **Save**.

- 9 To scan another image, or to scan the current image at a different resolution, repeat Steps 1 - 8.

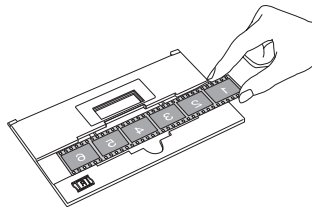
8 Scanning Film

- 1 Remove the protective sheet from the Film Adapter Unit.

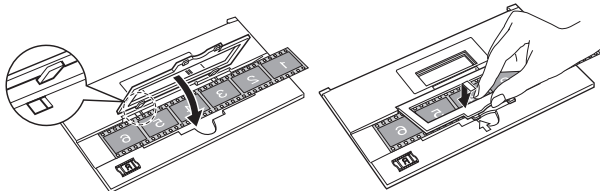
- 2 Open the clip on the film guide by inserting a fingertip in the indent and pressing inward while gently lifting it up.



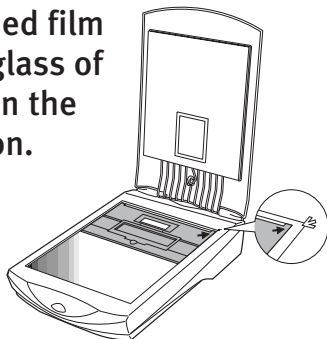
- 3 Place the film face down in the film guide's groove.



- 4 Align the tabs on the clip with the corresponding indent in the film guide and press gently inward on the clip while pushing them down into place.

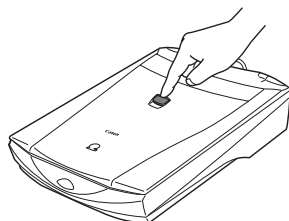


- 5 Place the loaded film guide on the glass of your scanner in the correct position.



- 6 Close the document cover.

- 7 Press the **Film Scan Start** button and follow the on-screen instructions.



9 Registering, Getting Help and Accessing Manuals

- 1 Register your product via the Web at: www.ccsi.canon.com/register
- 2 Go to www.canoscan.com for helpful tips on scanning for e-mail attachments, cropping an image, adjusting dots per inch, and more!
- 3 View electronic manuals by reinserting the Software Solutions CD-ROM and clicking **View the Electronic Manuals**.

Canon Technical Support

Canon Scanners

Canon Computer Systems, Inc. offers a full range of customer technical support* options:

- For e-mail technical support, the latest driver downloads and answers to frequently asked questions (www.ccsi.canon.com)
- 24-hour, 7-day-a-week automated support for troubleshooting issues on most current products (1-800-423-2366)
- 24-hour, Fax-On-Demand System for product specifications and technical information (1-800-526-4345)
- Free technical support Monday–Saturday (excluding holidays) for products still under warranty** (1-757-413-2848)
- Technical support 7 days a week (excluding holidays) for products no longer under warranty, for \$24.99 per call (1-800-423-2366), or for \$2.50 per minute, to a maximum of \$25.00 per call (1-900-246-1200)

NOTE: Within Canada, call for technical support 24 hours a day, 7 days a week (1-800-OK-CANON).

*Support program specifics subject to change without notice.

**Refer to individual product information for warranty details.

For more information about Canon Products, call **1-800-OK-CANON** or visit our Web site at: www.ccsi.canon.com

Canon Computer Systems, Inc.
2995 Redhill Avenue • Costa Mesa, California 92626 U.S.A.



ENERGY STAR® Compliant

©2000 Canon Computer Systems, Inc. Canon, CanoScan and ScanGear are registered trademarks of Canon Inc. Canon Print Planet is a service mark of Canon Computer Systems, Inc. All other products and brand names are trademarks of their respective owners.

Canon



USB Flatbed Scanner

CanoScan[®] D660U

Getting Started Guide

IMPORTANT

Follow the steps in this Getting Started Guide to unpack and set up your new CanoScan Scanner.