

PIXMA iP100

Quick Start Guide

Table of Contents

Introduction	1
How to Use the Documentation Provided	3
Preparing the Printer	4
Installing the Software	5
Reading the On-screen Manuals	8
Loading Printing Paper	9
Printing from Your Computer	10
Printing Photographs Directly from a Compliant Device	12
Replacing an Ink Tank	16
Specifications	18



European Union (and EEA) only.



These symbols indicate that this product is not to be disposed of with your household waste, according to the WEEE Directive (2002/96/EC), the Battery Directive (2006/66/EC) and/or your national laws implementing those Directives.

This product should be handed over to a designated collection point, e.g., on an authorized one-for-one basis when you buy a new similar product or to an authorized collection site for recycling waste electrical and electronic equipment (EEE) and batteries and accumulators. Improper handling of this type of waste could have a possible impact on the environment and human health due to potentially hazardous substances that are generally associated with EEE.

Your cooperation in the correct disposal of this product will contribute to the effective usage of natural resources.

For more information about the recycling of this product, please contact your local city office, waste authority, approved scheme or your household waste disposal service or visit www.canon-europe.com/environment.

(EEA: Norway, Iceland and Liechtenstein)



For Customers in Europe, Middle-East, Africa and Russia only

For Canon Customer Support contacts, please see the back cover of the Canon International Warranty System (IWS) Booklet or visit www.canon-europe.com.



АЯ46

Introduction

This *Quick Start Guide* uses the following symbols to indicate important information. Always observe the instructions indicated by these symbols.

Warning

Instructions that, if ignored, could result in death or serious personal injury caused by incorrect operation of the equipment. These must be observed for safe operation.

Caution

Instructions that, if ignored, could result in personal injury or material damage caused by incorrect operation of the equipment. These must be observed for safe operation.

Important

Instructions that must be observed for safe operation.

Depending on your application program, operations may differ. For details, refer to the instruction manual of your application. The steps described in this manual are in Windows Vista™ operating system Ultimate Edition (hereafter referred to as “Windows Vista”) and Mac® OS X v.10.4.x.

Trademark Notices

- “Microsoft” is a registered trademark of Microsoft Corporation.
- “Windows” is a trademark of Microsoft Corporation, registered in the U.S. and other countries.
- “Windows Vista” is a trademark of Microsoft Corporation.
- “Macintosh” and “Mac” are trademarks of Apple Inc., registered in the U.S. and other countries.
- “Adobe” and “Adobe RGB (1998)” are either registered trademarks or trademarks of Adobe Systems Incorporated in the United States and/or other countries.
- “IrDA Feature Trademark” is owned by the Infrared Data Association and used under license therefrom.
- “Bluetooth” is a trademark of Bluetooth SIG, Inc., U.S.A. and licensed to Canon Inc.

© **CANON INC.2008**

All rights reserved. No part of this publication may be transmitted or copied in any form whatsoever without the express written permission.

Exif Print

This printer supports Exif Print.

Exif Print is a standard for enhancing the communication between digital cameras and printers. By connecting to an Exif Print-compliant digital camera, the camera's image data at the time of shooting is used and optimized, yielding extremely high quality prints.

International ENERGY STAR® Program



As an ENERGY STAR® Partner, Canon Inc. has determined that this product meets the ENERGY STAR® guidelines for energy efficiency.

Power Requirements

Be sure to use the power cord included with the printer. Never use a power supply voltage other than that supplied in the country of purchase. Using the incorrect voltage could cause a fire or electric shock. The correct power supply voltages and frequencies are as follows:

AC 100-240 V, 50/60 Hz

About Consumables

Consumables (ink tanks / FINE Cartridges) are available for 5 years after production has stopped.

Safety Precautions

Warning

- This product emits low level magnetic flux. If you use a cardiac pacemaker and feel abnormalities, please move away from this product and consult your doctor.
- Never attempt to plug the power cord into the power outlet or unplug the power cord when your hands are wet.
- Never damage, modify, stretch, or excessively bend or twist the power cord. Do not place heavy objects on the power cord.
- Never use any power supply other than the standard power supply available in the country of purchase. Using the incorrect voltage and frequency could cause a fire or electric shock.
- Always push the plug all the way into the power outlet.

Caution

- For safety reasons, keep ink tanks out of the reach of children.
 - In case ink gets in contact with eyes, rinse with water immediately.
 - In case ink gets in contact with skin, wash with soap and water immediately.
 - Do not drop or shake ink tanks as this may cause the ink to leak out and stain your clothes and hands.
-

Also read the Safety Precautions in the *User's Guide* on-screen manual. Observe the warnings and cautions to avoid personal injury or damage to the printer.

How to Use the Documentation Provided



Printed Documentation

Setup Sheet

Be sure to read this sheet first.

This sheet includes instructions for setting up your printer and getting it ready for use.



Quick Start Guide (This guide)

Read this guide when starting to use the printer.

After following instructions in your setup sheet, we recommend you read this guide to familiarize yourself with the basic operations, for example, printing from your computer and a PictBridge compliant device.



On-screen Manuals

User's Guide

Read this guide when starting to use the printer.

If the *Quick Start Guide* does not provide you enough information, please refer to the *User's Guide* that can be installed from the *Setup CD-ROM*. This guide provides detailed instructions for:

- printing media
- printing from your computer
- printing through wireless communication
- routine maintenance
- troubleshooting

Additional guides are also available for advanced features.

PC Printing Guide

Refer to this guide for full instructions on printer driver setting.

PC Photo Printing Guide

Refer to this guide for instructions on using the various application software included on the *Setup CD-ROM*.

Bluetooth Guide

Refer to this guide for full instructions of printing from computers and devices that support Bluetooth communication, and on troubleshooting them.

Preparing the Printer

Be sure to read your setup sheet first for setting up your printer and getting it ready for use.

Unpack the printer

Please confirm the included items against the illustration printed on the lid of the packing box.

Caution

Be sure to remove the tapes before you turn on the printer.

Important

A USB cable is necessary to connect the printer with your computer.

- 1 Turn on the printer.
- 2 Install the Print Head.


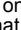
Caution

Do not touch any internal parts other than the Print Head Lock Lever.

Important

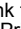
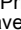
Do not reattach the protective cap once it has been removed.

Note

- There may be some transparent or light blue ink on the inside of the bag the print head comes in, or the inside of the protective cap - this has no effect on print quality. Be careful not to get ink on yourself when handling these items.
 - Insert the Print Head into the Print Head Holder by aligning the  mark on the Print Head with the  mark on the Print Head Holder.
 - Make sure that the Print Head Lock Lever is firmly locked into the Print Head Holder by pressing the both tabs on the Print Head Lock Lever until they click.
-

- 3 Install the ink tanks.

Important

- If the Print Head Cover is open for more than 10 minutes, the Print Head Holder moves to the right side. In this case, close the Print Head Cover, and open it again.
- Insert both ink tanks into the correct slots by aligning the  mark on the ink tank with the  mark on the Print Head Holder. The printer cannot be used unless both ink tanks are installed.
- Once you have installed both ink tanks, the **Power** lamp will flash green. Wait for about 2 minutes, until the **Power** lamp stops flashing and changes to steady, non-flashing green and the printer has stopped making operating noises, before proceeding.
- Do not reattach the protective cap once it has been removed.

Note

The **Alarm** lamp on the printer still flashes orange if the Print Head Lock Lever is not set properly or an ink tank is not installed properly. Open the Print Head Cover and make sure that the lock lever is set properly and both ink tanks are installed properly.

- 4 Load printing paper.

In the following process, you will be required to perform the Print Head Alignment, and you will need a sheet of the supplied paper (Paper For Print Head Alignment MP-101) with the printing side (whiter side) facing up in the Rear Tray.

Important

- Make sure that the Paper Thickness Lever is set to the right.
 - Always load paper in portrait orientation. Loading paper in landscape orientation can cause the paper to be jammed.
-

Installing the Software

■ Information Common to Windows® and Macintosh®

Notes on the Installation Process

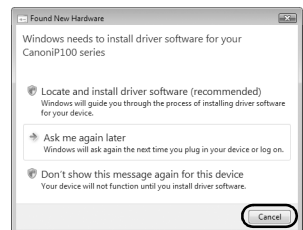
- If the **Select Language** screen appears, select a language, then click **Next**.
- If the **Select Your Place of Residence** screen appears, select your place of residence, then click **Next**.
- There are two ways of installing the printer driver and other software*:
 - Easy Install:** the items included on the *Setup CD-ROM* are installed automatically
 - Custom Install:** you can select particular items to install
- * The available software programs included on the *Setup CD-ROM* may vary depending on the country or region of purchase.
- When the **User Registration** screen appears, click **Next**. If your computer is connected to the Internet, the on-screen instructions to register your product will appear. Registration can also be performed from the icon on the desktop after installation is completed. The **User Registration** screen will only be displayed when **Europe, Middle East, Africa** is selected on the **Select Your Place of Residence** screen.
- Remove the *Setup CD-ROM* after installation is completed, then keep it in a safe place in case you need to reinstall the software.

Notes on the Print Head Alignment

- Load a sheet of the supplied paper (Paper For Print Head Alignment MP-101) with the printing side (whiter side) facing UP.
- Print Head Alignment will take about 5 minutes to complete. Do not open the Print Head Cover while printing.
- The pattern is printed in black and blue only.
- If the pattern is not printed successfully and the **Alarm** lamp on the printer flashes orange, press the **RESUME/CANCEL** button to clear the error, go ahead to the next procedure to install the printer driver and on-screen manuals, then refer to “Eleven flashes” in “Alarm Lamp Flashes Orange” in the *User’s Guide* on-screen manual.

■ Information for Windows

- Log into a user account with the administrator privilege.
- Quit all running applications before installation.
- Do not switch users during the installation process.
- If the **Found New Hardware** or **Found New Hardware Wizard** screen appears automatically, remove the USB cable connected to your computer. Click **Cancel** to quit the screen. In Windows Vista, the screen may close automatically when the USB cable is unplugged. Then turn off the printer and start the installation process again. When performing infrared communication, click **Cancel** to quit the screen. Then turn off the printer and start the installation process again. For details on the installation process, refer to your setup sheet.



- If installation does not start automatically when the *Setup CD-ROM* is inserted into your computer's disc drive, click **Start** then **Computer**. (In Windows XP, click **Start** then **My Computer**. In Windows 2000, double-click the **My Computer** icon on the desktop.) And double-click the CD-ROM icon on the displayed window. If the contents of the CD-ROM are displayed, double-click **MSETUP4.EXE**.
- If the **AutoPlay** screen appears, click **Run Msetup4.exe**. In Windows XP and Windows 2000, this screen will not appear.
- If the **User Account Control** screen appears, click **Continue**. In Windows XP and Windows 2000, this screen will not appear.
- To install Adobe® RGB (1998), click **Custom Install** and follow the instruction on the screen.
- When a message asking for your confirmation to restart your computer may appear during the installation process, click **OK**. The system is restarted automatically. While restarting, do not remove the *Setup CD-ROM*.
- We would appreciate it if you would take part in the **PIXMA Extended Survey Program** regarding the use of Canon printers. If **Do not agree** is clicked, the **PIXMA Extended Survey Program** will not be installed but you can use the printer normally.
- If the connection is not recognized, follow the procedure below according to the connection method.

When connecting with a USB cable

Click **Cancel** to quit the **Printer Connection** screen, then follow the on-screen instructions. When the **Easy Install** screen appears, click **Back** and then click **Exit** to cancel installation. Next turn off the printer and restart your computer. Then follow the instructions in your setup sheet to install the printer driver.

When connecting through infrared communication

Click **Cancel** to quit the **Printer Connection** screen, then follow the on-screen instructions. When the **Easy Install** screen appears, click **Back** and then click **Custom Install**, then follow the on-screen instructions. When the **Printer Connection** screen appears, click **Manual Selection**, select **IR**, click **Next**, then follow the on-screen instructions.

- When performing infrared communication, make the IrDA port of each other's device stand opposite to each other. Distance between the IrDA ports should be 8 inch (20 cm) or less.

Solution Menu

- This menu screen helps you to easily launch bundled applications or on-screen manuals. Also, you can easily access useful web sites to get tips on how to use your printer. Experience how easy it is to launch menu items by using the menu screen that appears automatically when your computer starts up. For details, refer to the *Introduction to Solution Menu* on-screen manual.

My Printer

- This application helps you to operate this printer. Use this application to open the printer driver or the status monitor screen and confirm or change both the printer settings or status. Also, this application has a menu to provide troubleshooting tips when problems arise. Double-click the icon on the desktop and experience how easy operating the printer can be.

■ **Information for Macintosh**

- Since Mac OS 9, Mac OS X Classic environments, or Mac OS X v.10.3.8 or earlier are not supported, do not connect the printer to these. Use Mac OS X 10.3.9 or later.
- Do not remove or insert the USB cable during installation, as this may result in the computer or printer not operating normally.
- Quit all running applications before installation.
- If installation does not start automatically when the *Setup CD-ROM* is inserted into your computer's disc drive, double-click the CD-ROM icon on your desktop.

- When a message asking your confirmation to restart your computer appears during the installation process, click **Restart**. The system is restarted automatically. While restarting, do not remove the *Setup CD-ROM*.

Users in Asia

- To view the *User's Guide* on-screen manual in a language other than the installed one, double-click the **Manual** folder in the *Setup CD-ROM*, **Canon** folder, and then copy a language folder to your hard disk.

Reading the On-screen Manuals

For detailed instructions on installing the on-screen manuals, refer to your setup sheet.

You can view the on-screen manuals in the following way:

Windows

To view the on-screen manual, double-click the **XXX On-screen Manual** shortcut icon on the desktop, or click **Start > All Programs** (or **Programs**) > **Canon XXX Manual > XXX On-screen Manual** (where “XXX” is your printer’s name).

System Requirements

Browser: Windows HTML Help Viewer

Note

- Microsoft® Internet Explorer 5.0 or later must be installed.
 - The on-screen manual may not be displayed properly depending on your operating system or Internet Explorer version. We recommend that you keep your system up to date with Windows Update.
-

Macintosh

To view the on-screen manual, double-click the **XXX On-screen Manual** alias (where “XXX” is your printer’s name) on the desktop.

Note

Users in Asia

If you installed the *User’s Guide* from the **Manual** folder in the *Setup CD-ROM*, open the folder in which you copied the *User’s Guide* and double-click **top.htm**.

System Requirements

Browser: Help Viewer

Note

- The on-screen manual may not be displayed properly depending on your operating system. We recommend that you keep your system up to date.
 - We recommend using Safari as your Web browser to view the HTML format on-screen manuals. If Safari is not installed on your computer, download it from Apple Inc. website and install it.
-



Loading Printing Paper

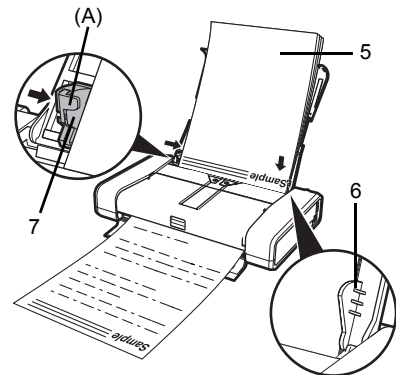
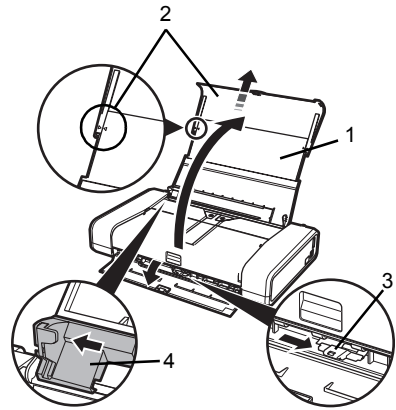
Important

Always load paper in portrait orientation. Loading paper in landscape orientation can cause the paper to be jammed.

Note

If you cut plain paper to 4" x 6" / 101.6 x 152.4 mm, 5" x 7" / 127.0 x 177.8 mm, or 2.13" x 3.39" / 54.0 x 86.0 mm (credit card-size) for a trial print, it can cause paper jams.

- 1** Open the Rear Tray Cover.
The Paper Output Slot Cover will open automatically.
- 2** Pull out the Paper Support completely until the  mark and the  mark are aligned.
- 3** Adjust the position of the Paper Thickness Lever.
The Paper Thickness Lever switches the clearance between the Print Head and the loaded paper to match the media type.
Set it to the left when printing on envelopes or T-shirt transfers, and right when printing on any other type of paper.
- 4** Slide the Paper Guide to the left side of the Rear Tray.
- 5** Load the paper in the Rear Tray with the print side facing UP.
Do not load higher than the projection (A).
- 6** Align the paper stack against the guide on the right side of the Rear Tray.
- 7** Slide the Paper Guide against the left side of the paper stack.
Do not slide the Paper Guide too strong. Paper may not be fed properly.

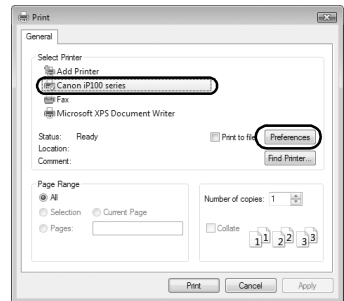


Printing from Your Computer

This section describes the procedure for basic printing.

Printing with Windows

- 1 Turn on the printer and load the paper in the printer.
If you use the battery, make sure that it is charged.
- 2 Create a document or open a file to print using an appropriate application software.
- 3 Select **Print** on the application software's **File** menu.
- 4 Make sure that your printer's name is selected in **Select Printer**, and click **Preferences** (or **Properties**).

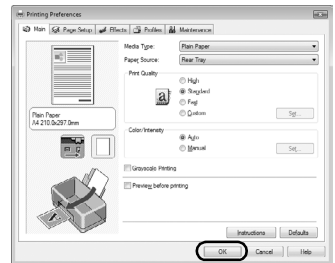


- 5 Specify the required settings and click **OK**.

Note

For details on other printer driver functions, click **Help** or **Instructions** to view the online help or the *PC Printing Guide* on-screen manual. **Instructions** is only displayed when the on-screen manuals are installed.



- 6 Click **Print** (or **OK**).



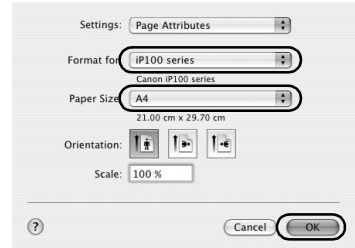
Printing with Macintosh

- 1 Turn on the printer and load the paper in the printer.
If you use the battery, make sure that it is charged.
- 2 Create a document or open a file to print using an appropriate application software.
- 3 Select **Page Setup** on the application software's **File** menu.
- 4 Make sure that your printer's name is selected in **Format for**.
- 5 Select the desired paper size in **Paper Size**.
- 6 Click **OK**.
- 7 Select **Print** on the application software's **File** menu.
- 8 Select **Quality & Media** in the pop-up menu.
- 9 Specify the required settings.

Note

For details on other printer driver functions, click  to view the *PC Printing Guide* on-screen manual. If the on-screen manuals are not installed, the *PC Printing Guide* on-screen manual is not displayed even if  is clicked.

- 10 Click **Print**.



Printing Photographs Directly from a Compliant Device

You can connect a PictBridge compliant device such as a digital camera, camcorder, or mobile phone using a USB cable recommended by the device's manufacturer, and print recorded images directly without using a computer.

● Connectable Devices

PictBridge is an industry standard enabling a range of digital photo solutions, including the direct printing of photos from a digital still camera, camcorder or mobile phone* without the need to use a computer. A device can be connected to this printer for direct printing regardless of the manufacturer or the model as long as it complies with the PictBridge standard.

* PictBridge compatible digital still cameras, digital camcorders, and camera-equipped mobile phones are hereafter collectively referred to as "PictBridge compliant device".



A device with this mark is PictBridge compliant.

● Printable Image Data Format

This printer prints images taken with a DCF (Design rule for Camera File system) ver. 1.0/2.0-compatible digital camera (Exif ver. 2.2/2.21 compliant), as well as PNG files.

Printing Photographs Directly from a Compliant Device

To connect a PictBridge compliant device to this printer, use a USB cable recommended by the device's manufacturer.

Caution

Do not connect any equipment other than PictBridge compliant devices or the optional Bluetooth Unit BU-30 to the Direct Print Port of the printer. If you do so, electric shock, fire, or damage to the printer could result.

Important

Never disconnect the USB cable during printing unless when explicitly allowed to by the PictBridge compliant device. When disconnecting the USB cable between the PictBridge compliant device and printer, follow the instructions given in the device's instruction manual.

Note

When printing photos with the PictBridge compliant device connected to the printer, we recommend the use of the AC adapter supplied with the device. If you are using the device battery, be sure to charge it fully.

1 Prepare for printing.

- (1) Turn on the printer.
If you use the battery, make sure that it is charged.
- (2) Load paper.

2 Connect the PictBridge compliant device to the printer.

Note

Depending on the model or brand of your device, you may have to select a print mode compliant with PictBridge before connecting the device. You may also have to turn on the device or select Play mode manually after connecting the device to the printer.


Perform necessary operations on the PictBridge compliant device before connecting it to this printer according to instructions given in the device's instruction manual.

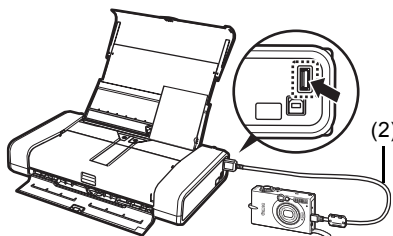
- (1) Make sure that the PictBridge compliant device is turned off.
- (2) Connect the PictBridge compliant device to the printer using a USB cable recommended by the manufacturer of the device.

The device turns on automatically.

If your device does not turn on automatically, turn it on manually.

- (3) Set up the PictBridge compliant device for direct printing.

 will appear on the LCD of the device when the printer is correctly connected.



3 Specify the print settings such as paper type and layout.

See “About PictBridge Print Settings” on page 14.

You can make settings using the menu on the LCD of your PictBridge compliant device.

Select the size and type of paper that you loaded in the printer.

4 Start printing from your PictBridge compliant device.

About PictBridge Print Settings

■ Settings on a PictBridge Compliant Device

This section describes the print settings on a PictBridge compliant device. When operating the device, be sure to follow the instructions given in the instruction manual of your PictBridge compliant device.

Note

- In the following description, names of setting items are given according to those used in Canon-brand PictBridge compliant devices. Setting item names may be different depending on the brand or model of your device.
- Some setting items explained below may not be available on some devices.
When you cannot change print settings on a device, the printer prints images as follows:
 - Paper size: 4" x 6" / 101.6 x 152.4 mm
 - Paper type: Photo
 - Layout: 1-up, Borderless
 - Date/File No. Print: Off (not printed)
 - Image Optimize: On (the shooting information will be used for optimized printing)

● Paper size and Paper type Settings

The following sizes and types of printing paper can be used when printing from a PictBridge compliant device.

- Paper size
4" x 6" / 10 x 15 cm, 5" x 7"^{*1}, Credit card / 5.4 x 8.6 cm, 8" x 10" / 20 x 25 cm, A4, 8.5" x 11" (Letter), 4" x 7.1" / 10.1 x 18 cm^{*2}
- Paper type

Paper Type Setting	Loadable Paper ^{*4}
Plain ^{*3}	Super White Paper or other plain paper
Photo	Photo Paper Plus Glossy
	Photo Paper Plus Glossy II ^{*5}
	Glossy Photo Paper
	Glossy Photo Paper "Everyday Use"
	Photo Paper Glossy
	Photo Paper Plus Semi-gloss ^{*5}
	Photo Stickers ^{*6}
Fast Photo	Photo Paper Pro

The available page sizes vary depending on the media type. For details, visit our website.

^{*1} Can be selected only on certain Canon-brand PictBridge compliant devices.

^{*2} May appear as "Hi-Vision" on a non Canon-brand PictBridge compliant device.

^{*3} **Plain** can be selected for **Paper type** only when **Paper size** is set to **A4** or **8.5" x 11" (Letter)**. When **Paper type** is set to **Plain**, borderless printing will be disabled even when **Layout** is set to **Borderless**.

^{*4} You may not be able to purchase some Canon genuine papers depending on the country or region of purchase.

^{*5} When printing on 8" x 10" / 203.2 x 254.0 mm paper, select **8" x 10" / 20 x 25 cm** for **Paper size** and **Default** for **Paper type**.

^{*6} Exclusively used to print photo stickers. When printing on sticker paper, select **4" x 6"/10 x 15 cm** in **Paper size** and **Photo** for **Paper type**. Do not set **Layout** to **Borderless**.

● Layout Setting

Various layout options are available.

- Bordered/Borderless: You can select whether or not to print an image with a border.
- N-up: You can use this option when printing on sticker paper, or A4- or Letter-sized paper.
Sticker paper: When you select **4" x 6"/10 x 15 cm** for **Paper size**, you can print 16 images on a single sheet of paper.
A4 or Letter-sized paper: When you select **A4** or **8.5" x 11" (Letter)** for **Paper size**, you can print 4 images on a single sheet of paper.
- Shooting Info (Exif Data)*¹: You can print shooting info (Exif Data) along with the image. The following two options are available.
1-up*²: Prints the shooting info (Exif Data) in the margin of selected individual images.
20-up*³: Prints 20 images specified with DPOF*⁴ and their shooting info (Exif Data) in list format on a single sheet of paper.
- 35 mm Film Style Layout (Contact Printing Layout)*^{1*3}: You can print the multiple images specified with DPOF*⁴ in a list format that looks like a negative film.

Besides the above options, you can also specify to print an index of images in the DPOF print settings menu.

*¹ Can be selected only on certain Canon-brand PictBridge compliant devices.

*² You can use this option only when **4" x 6"/10 x 15 cm**, **5" x 7"**, **8" x 10"/20 x 25 cm**, **A4** or **8.5" x 11" (Letter)** is selected for **Paper Size**.

*³ You can use this option only when **A4** or **8.5" x 11" (Letter)** is selected for **Paper size**.

*⁴ DPOF (Digital Print Order Format) is a standard format to record the specified information regarding images, such as which image or number of copies to print.

● Date/File No. Print Setting

You can specify whether the date and/or file number will be printed.

Note

- If the images already have dates superimposed when shot, set this PictBridge setting item to **Off**. If you select **Date**, **File No.**, or **Both**, the date and/or file number will be printed over the date printed by the device's function.
 - Depending on the paper size and layout, the date will only be printed even when **Both** is selected.
-

● Image Optimize Setting

You can select the optimization method to obtain high print quality. When you select **On**, the shooting information is used to print the optimized image.

If you are using a Canon-brand PictBridge compliant device, the following additional options may be available, depending on the model.

- **VIVID** makes green and blue more lively.
- **NR** (Noise Reduction) reduces the noise on blue areas like the sky as well as on black areas.
- **Face** brightens a darkened face on the photo taken against the light.
- **Red-Eye** corrects red eyes in portraits caused by flash photography.

● Trimming Setting

You can select an area to print.

Replacing an Ink Tank

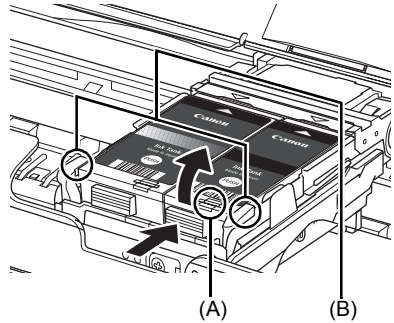
When ink tanks run out of ink, replace them using the following steps.

1 Make sure that the printer is on, and then open the Print Head Cover.

2 Push the tab of the ink tank whose lamp (A) is flashing fast and remove it.

Do not touch the Print Head Lock Lever (B).

If you pull up the Print Head Lock Lever, refer to “Inside” in “Main Components” of the *User’s Guide* on-screen manual and lock it again.

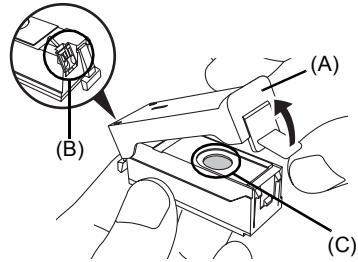


3 Remove the new ink tank from its packaging, then remove the orange protective cap (A) from the bottom of the ink tank.

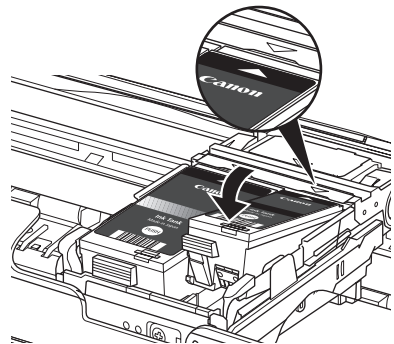
Discard the cap once it is removed.

Important

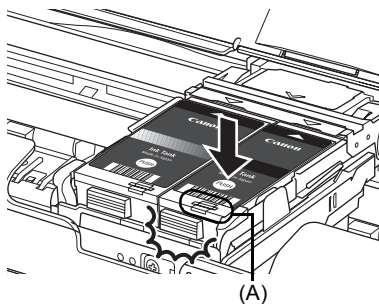
- Do not touch the electrical contacts (B) on the ink tank. Doing so can cause the printer to malfunction or become unable to print.
- Do not re-attach the protective cap once you have removed it. Discard it according to the local laws and regulations regarding disposal of consumables.
- Do not touch the open ink ports (C) once the protective cap is removed, as this may prevent the ink from being ejected properly.



4 Insert the front end of the ink tank into the Print Head by aligning the \triangle mark on the ink tank with the ∇ mark on the Print Head Holder.

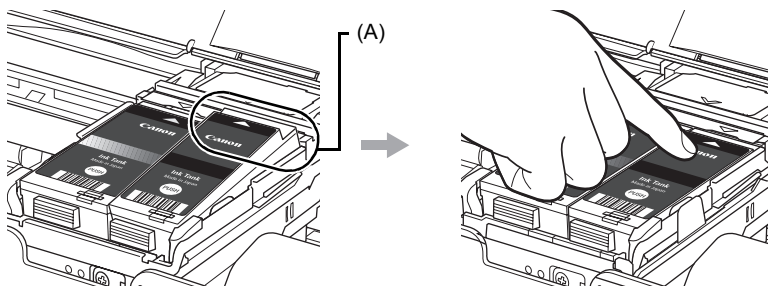


- 5** Press on the  mark on the ink tank until the ink tank snaps firmly into place.
Confirm that the ink lamp (A) lights up red.



 **Important**

If the front (innermost) part of the ink tank (A) is sticking up, push down on the Canon logo on the ink tank as illustrated below. Do not remove the ink tank forcibly.



- 6** Close the Print Head Cover.

 **Note**

When you start printing after replacing the ink tank, Print Head Cleaning is performed automatically. Do not perform any other operations until Print Head Cleaning finishes. The **Power** lamp flashes green during cleaning.

Specifications

General Specifications	
Printing resolution (dpi)	9600 (horizontal)* x 2400 (vertical) * Ink droplets can be placed with a pitch of 1/9600 inch at minimum.
Interface	USB 2.0 High Speed* ¹ IrDA ver.1.4* ² Bluetooth v2.0 (option)* ³ * ¹ A computer that complies with USB 2.0 Hi-Speed standard is required. Since the USB 2.0 Hi-Speed interface has full backward compatibility with USB Full-Speed (USB 1.1), it can be used at USB Full-Speed (USB 1.1). * ² Maximum speed: FIR 4Mbps Maximum communication range: 20 cm (8 inches) * ³ Bluetooth connection is for printing only.
Print width	8 inches / 203.2 mm max. (for Borderless Printing: 8.5 inches / 216 mm)
Acoustic noise level	Approx. 38.5 dB (A) *When printing in the highest print quality mode on Photo Paper Pro.
Operating environment	Temperature: 5 to 35°C (41 to 95°F) Humidity: 10 to 90% RH (no condensation)
Storage environment	Temperature: 0 to 40°C (32 to 104°F) Humidity: 5 to 95% RH (no condensation)
Power supply	AC adapter 100-240 V, 50/60 Hz
Power consumption	Printing: Approx. 9 W Standby (minimum): Approx. 1.5 W OFF: Approx. 0.4 W
External dimensions	Approx. 12.7 (W) x 7.3 (D) x 2.4 (H) inches / Approx. 322 (W) x 185 (D) x 61.7 (H) mm * With the Paper Support and Paper Output Slot Cover retracted.
Weight	Approx. 2.0 kg (Approx. 4.4 lb.) * With the Print Head and Ink Tanks installed.
Print Head	Total 1,856 nozzles (PGBK: 320 nozzles, C/M each 512 nozzles, BK/Y each 256 nozzles)
Camera Direct Print (PictBridge)	
Paper size	4" x 6" / 10 x 15 cm, 5" x 7"**, Credit card / 5.4 x 8.6 cm, 8" x 10" / 20 x 25 cm, A4, 8.5" x 11" (Letter), 4" x 7.1" / 10.1 x 18 cm * Can be selected only on certain Canon-brand PictBridge compliant devices.
Paper type	Default (Photo Paper Plus Glossy), Photo (Photo Paper Plus Glossy, Photo Paper Plus Glossy II, Glossy Photo Paper, Glossy Photo Paper "Everyday Use", Photo Paper Glossy, Photo Paper Plus Semi-gloss, Photo Stickers), Fast Photo (Photo Paper Pro), Plain (Only A4/Letter)





Camera Direct Print (PictBridge)

Layout	<p>Default (Borderless), Borderless, Bordered, N-up (2, 4, 9, 16*¹), 20-up*², 35-up*³</p> <p>*1 Layout compatible with Canon-brand sticker above. Refer to "Printing Media" in the <i>User's Guide</i> on-screen manual.</p> <p>*2 You can print shooting Info (Exif Data) on photos in list format (20-up), or in the margins of specified photos (1-up). Select Layout, then select the item displayed with the [i] icon. (Note that this print setting cannot be used for some models.)</p> <p>*3 Selected photos are printed in 35 mm film style layout (contact printing layout). This print setting is only available with certain Canon PictBridge compliant devices.</p>
Image optimize	<p>Default (Exif Print), On, Off, VIVID*, NR (Noise Reduction)*, Face*, Red eye*</p> <p>* If using a Canon PictBridge compliant device, you can select it.</p>
Print date & file no.	Default (Off: No printing), Date, File No., Both, Off
Trimming	Default (Off: No trimming), On (follow camera's setting), Off

Minimum System Requirements

Note

Conform to the operating system's requirements when higher than those given here.

	Windows	Macintosh
Operating System Processor RAM	<p>Windows Vista Pentium II (including compatible processors) 300 MHz 128 MB</p> <p>Windows XP SP2 Pentium II (including compatible processors) 300 MHz 128 MB</p> <p>Windows 2000 Professional SP4 Pentium II (including compatible processors) 300 MHz 128 MB</p> <p> Note Operation can only be guaranteed on a PC pre-installed Windows Vista, XP or 2000.</p>	<p>Mac OS X v.10.4 Intel processor PowerPC G3 256 MB</p> <p>Mac OS X v.10.3.9 PowerPC G3 128 MB</p> <p> Note Hard Disk must be formatted as Mac OS Extended (Journaled) or Mac OS Extended.</p>
Browser	Internet Explorer 6.0 or later	Safari
Hard Disk Space	<p>400 MB</p> <p> Note For bundled software installation.</p>	<p>450 MB</p> <p> Note For bundled software installation.</p>
CD-ROM Drive	Required	
Other restrictions	SVGA 800 x 600	

- To upgrade from Windows XP to Windows Vista, first uninstall software bundled with the Canon inkjet printer.

Additional System Requirements for On-Screen Manuals

Windows	Macintosh
<p>Browser: Windows HTML Help Viewer</p> <p>Note: Microsoft Internet Explorer 5.0 or later must be installed. The on-screen manual may not be displayed properly depending on your operating system or Internet Explorer version. We recommend that you keep your system up to date with Windows Update.</p>	<p>Browser: Help Viewer</p> <p>Note: The on-screen manual may not be displayed properly depending on your operating system or Help Viewer version. We recommend that you keep your system up to date with Software Update.</p>

Specifications are subject to change without notice.

Regulatory Information

FCC Notice (U.S.A. Only)

For 120V, 60Hz model

Model Number: K10296

This device complies with Part 15 of the FCC Rules. Operation is subject to the following two conditions: (1) This device may not cause harmful interference, and (2) this device must accept any interference received, including interference that may cause undesired operation.

Note: This equipment has been tested and found to comply with the limits for a Class B digital device, pursuant to Part 15 of the FCC Rules. These limits are designed to provide reasonable protection against harmful interference in a residential installation. This equipment generates, uses and can radiate radio frequency energy and, if not installed and used in accordance with the instructions, may cause harmful interference to radio communications.

However, there is no guarantee that interference will not occur in a particular installation. If this equipment does cause harmful interference to radio or television reception, which can be determined by turning the equipment off and on, the user is encouraged to try to correct the interference by one or more of the following measures:

- Reorient or relocate the receiving antenna.
- Increase the separation between the equipment and receiver.
- Connect the equipment into an outlet on a circuit different from that to which the receiver is connected.
- Consult the dealer or an experienced radio/TV technician for help.

Use of a shielded cable is required to comply with Class B limits in Subpart B of Part 15 of the FCC Rules.

Do not make any changes or modifications to the equipment unless otherwise specified in the manual. If such changes or modifications should be made, you could be required to stop operation of the equipment.

Canon U.S.A., Inc.

One Canon Plaza

Lake Success, NY 11042

1-516-328-5600

Users in Canada

Caution

- This Class B digital apparatus meets all requirements of the Canadian Interference-Causing Equipment Regulations.
 - Cet appareil numérique de la classe B respecte toutes les exigences du Règlement sur le matériel brouilleur du Canada.
-

The following ink tanks are compatible with this product.



canon.com.au
canon.co.nz
www.canon-asia.com