

Canon EOS REBEL T1i EOS 500D

Pocket Guide

This quick guide explains basic function settings and how to shoot and playback images. You can take this guide with you for shooting. For detailed instructions, refer to the EOS REBEL T1i/EOS 500D Instruction Manual.



English Edition
© CANON INC. 2009

Quick Start Guide

1 Insert the battery.

2 **Attach the lens.**
When attaching an EF-S lens, align it with the white index on the camera. For other lenses, align it with the red index.

3 **Set the lens focus mode switch to <AF>.**

4 **Open the cover and insert a SD card.**

5 **Set the power switch to <ON>.**

6 **Set the Mode Dial to <Q> (Full Auto).**
All the necessary camera settings will be set automatically.

7 **Focus the subject.**
Aim the AF point over the subject and press the shutter button halfway to autofocus.

8 **Take the picture.**
Press the shutter button completely to take the picture.

9 **View the image.**
The captured image will be displayed for about 2 sec. on the LCD monitor.

The ☆ on the right of the function indicates that the function is available only in Creative Zone modes (P, Tv, Av, M, A-DEP).

Battery Life

Temperature	No Flash	50% Flash Use
At 23°C / 73°F	Approx. 500 shots	Approx. 400 shots

Image Playback

Index **Magnify**

Select image **Erase** **Playback**

DISP. Shooting information

1/125 8.0 100-0033

1/125 8.0 100-0033

1/125 8.0 100-0033

1/125 8.0 100-0033

Preparation

Menu Operations

<MENU> button **LCD monitor** **<SET> button** **Cross keys**

1. Press the <MENU> button to display the menu.
2. Press the <<▶> key to select the tab, then press the <▲▼> key to select the desired item.
3. Press <SET> to display the setting.
4. After setting the item, press <SET>.

Basic Zone Modes

Quality, Beep, Release shutter without card, Review time, Peripheral illumin. correct., Red-eye On/Off, Off

Movie Shooting Mode

Grid display, Metering timer, Movie rec. size, AF mode, Sound recording, Remote control

Creative Zone Modes

Quality, Beep, Release shutter without card, Review time, Peripheral illumin. correct.

Menu items **Menu settings**

Menu Settings

Shooting 1

Quality, Beep, Release shutter without card, Review time, Peripheral illumin. correct., Red-eye On/Off, Flash control

Shooting 2

Expo.comp./AEB, Metering mode, Custom WB, WB SHIFT/BKT, Color space, Picture Style, Dust Delete Data

Playback 1

Protect images, Rotate, Erase images, Print order, Transfer order

Playback 2

Histogram, Slide show, Image jump w/

Set-up 1

Auto power off, File numbering, Auto rotate, Format, LCD auto off, Screen color

Set-up 2

LCD brightness, Date/Time, Language, Video system, Sensor cleaning, Live View function settings

These screens apply when a Creative Zone mode is set. In the Basic Zone modes and Movie shooting mode, certain tabs and menu options will not be displayed.

Set-up 3

Custom Functions(C.Fn), Clear settings, Firmware Ver. 1.0.0

Movie shooting mode

Grid display, Metering timer, Movie rec. size, AF mode, Sound recording, Remote control

Quick Control Screen

With the shooting settings are displayed, press <SET>. The Quick Control screen will appear.

Aperture, Shutter speed, ISO speed, Highlight tone priority, Flash exposure compensation, Metering mode, Drive mode, White balance, Picture Style, AF mode

- Press the <◀▶> key to select the function, then turn the <☺> dial to set it.
- In the Basic Zone modes, you can select certain drive modes and the image-recording quality.

Image-recording Quality

- Select [Quality], then press <SET>.
- Press the <◀▶> key to select the quality, then press <SET>.

Image-recording quality

Quality, 15M 4752x3168 [146]

Possible shots

RAW+L, RAW

Picture Style

- Press the <☺> button.
- Press the <◀▶> key to select the Picture Style, then press <SET>.

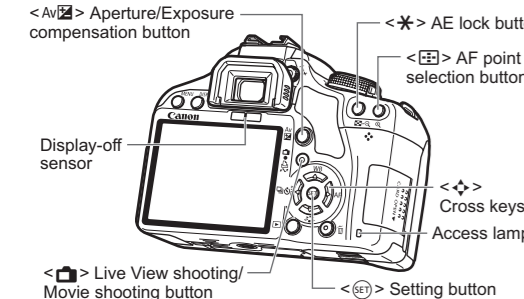
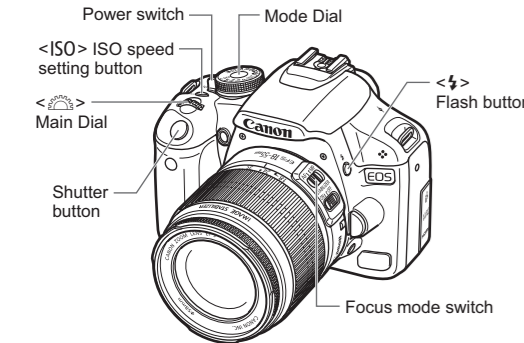
Picture Style, Standard, 3, 0, 0, 0

Style	Description
Standard	Vivid colors and sharp images.
Portrait	Nice skin tones and slightly sharp images.
Landscape	Vivid blue skies and greenery and very sharp images.
Monochrome	Black-and-white images.

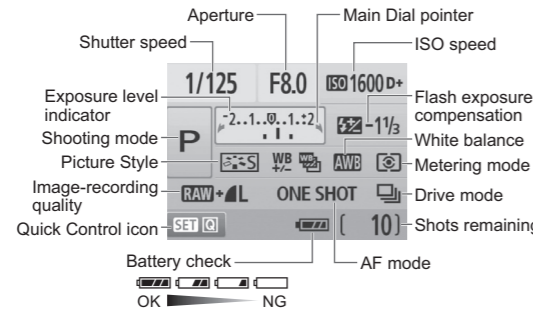
- For <Neutral> (Neutral) and <Faithful> (Faithful), see the camera's instruction manual.

Shooting Operation

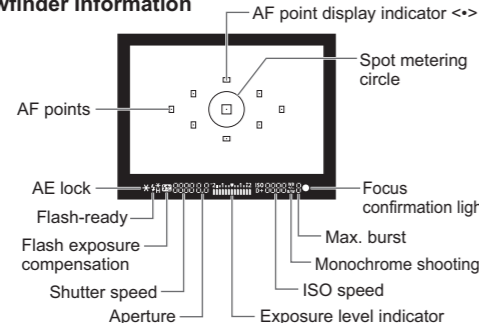
Nomenclature



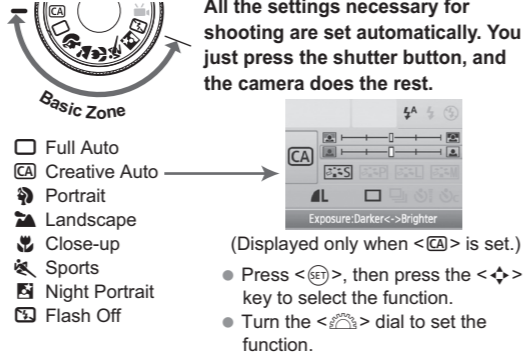
Shooting Settings Display



Viewfinder Information



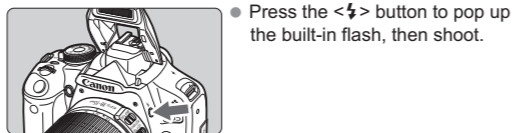
Basic Zone Modes



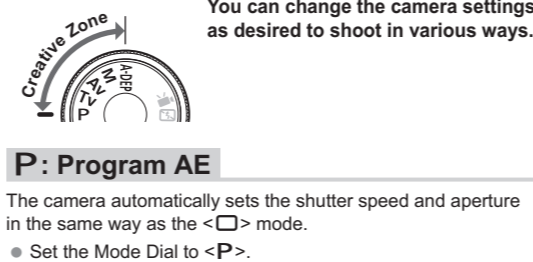
Using the Built-in Flash

In Basic Zone Modes
If necessary, the built-in flash will pop-up automatically in low-light or backlit conditions (except in the <📷> <📷> <📷> modes).

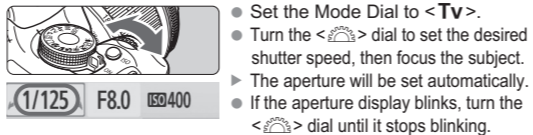
Creative Zone Modes



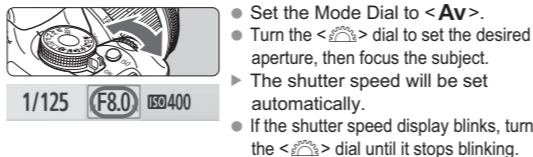
Creative Zone Modes



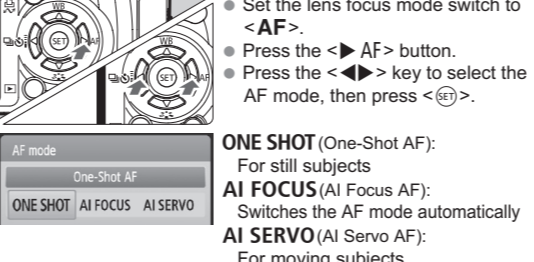
Tv: Shutter-priority AE



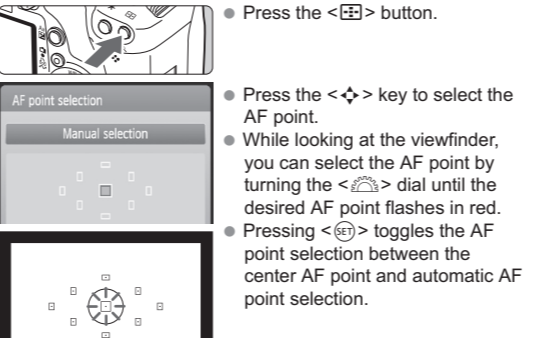
Av: Aperture-priority AE



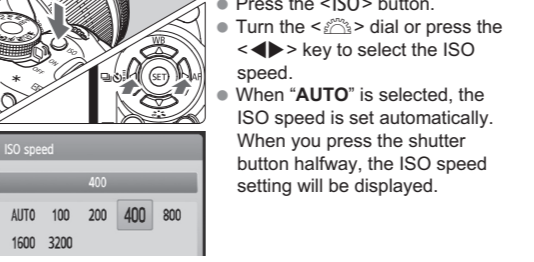
AF: AF Mode



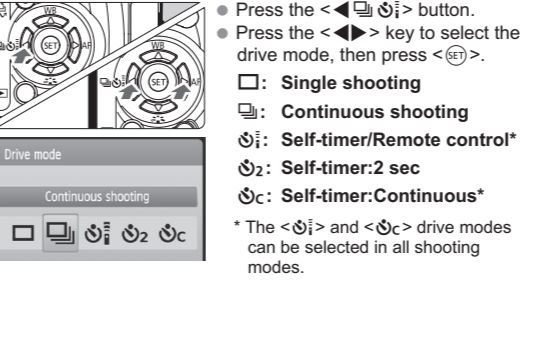
AF Point



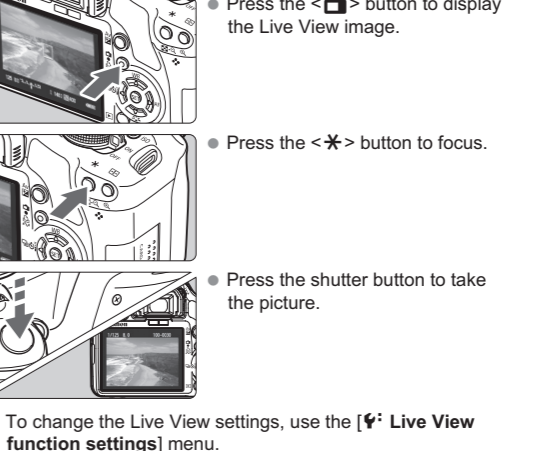
ISO: ISO Speed



Drive Mode



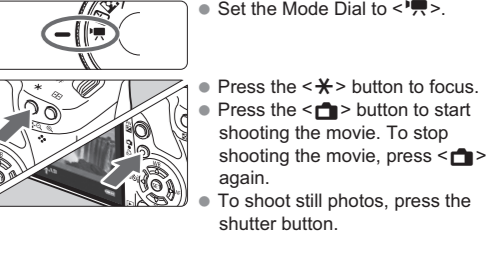
Live View Shooting



Battery Life with Live View Shooting

Temperature	No Flash	50% Flash Use
At 23°C / 73°F	Approx. 190 shots	Approx. 170 shots

Shooting Movies



Custom Functions

1 Exposure level increments	8 AF-assist beam firing
2 ISO expansion	9 Mirror lockup
3 Flash sync. speed in Av mode	10 Shutter/AE lock button
4 Long exposure noise reduction	11 Assign SET button
5 High ISO speed noise reduction	12 LCD display when power ON
6 Highlight tone priority	13 Add original decision data
7 Auto Lighting Optimizer	