



Easy Setup Instructions For Apple AirPort Wireless Networks

These instructions are for setting up your PIXMA machine on an Apple AirPort wireless network in a Mac OS X environment. For all other environments, including USB connections, wired networks, non-AirPort wireless networks, and all Windows installations, please use the **Getting Started Guide**. Also for setting up additional computers on your network to access the machine, refer to the **Getting Started Guide**.

Before starting, please locate and write down the your network name and password. Since Apple recommends using the WPA/WPA2 encryption method for AirPort networks, these instructions are for configuring the machine on WPA/WPA2 encrypted networks.

Network Name (also called SSID): _____ Network password (if applicable): _____

1

Hardware Setup

Unpack the machine and prepare the hardware for use by following chapters 1 to 4 of the **Getting Started Guide**.

2

Driver/Software Install

1

Connect one end of the USB cable to the computer and the other to the machine.
Make sure the machine is turned on.

4

Enter your administrator name and password.
Click **OK**.

If you do not know your administrator name or password, click **Help**, then follow the on-screen instructions.

6

Follow **on-screen** instructions.

2

Turn on the computer, then insert the **Setup CD-ROM** into the CD-ROM drive.

5

Click **Easy Install**.

The drivers, application software, and on-screen manuals are installed automatically.

If the registration screen appears, follow the on-screen instructions to register your product. You will need your product serial number which is located on the packaging, or, on the inside lower part of the machine.

3

Double-click the **Setup** icon.

If the CD-ROM folder does not open automatically, double-click the **CANON_IJ** icon on the desktop.

7

Click **Restart**.

When the computer restarts, Canon IJ Network Tool starts automatically.

Click **Restart** to restart the computer.
After restarting the computer, remove the **Setup CD-ROM** and keep it in a safe place.

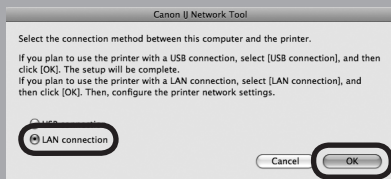
3-A

Connecting to AirPort Networks With a Single AirPort Access Point

Use These Instructions if Your Network Has Only One AirPort Networking Device
(Single Time Capsule, AirPort Extreme, AirPort Express, etc.)

For Users With Multiple Access Points (Wireless Routers) Proceed to Section 3-B

1



On the **Canon IJ Network Tool** screen, select **LAN connection**, then click **OK**.

2



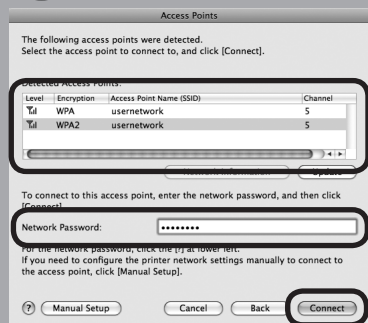
If the **Setup Preparations** dialog box appears, confirm that preparation is complete, then click **OK**.

3



Select **Setup** in the drop-down menu, select **MP620 series** in **Printers**, then click **OK**.

4



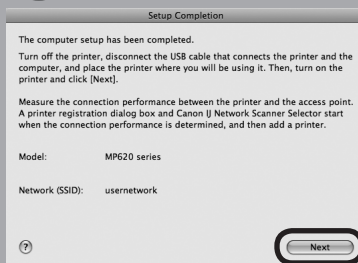
When the **Access Points** screen appears, select an access point to use, then click **Connect**.

To connect to the access point with **WEP** or **WPA** displayed in the **Encryption** column, enter the network key (WEP key or WPA key) in **Network Password**, then click **Connect**.

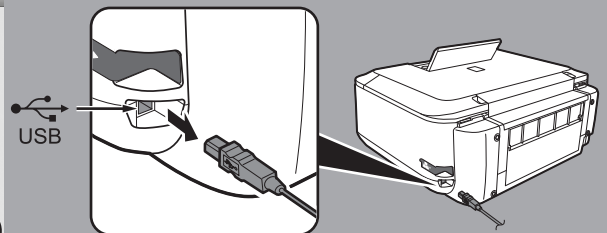
You can retrieve your network key by using the Canon PIXMA Wireless Setup Assistant or the instructions which can be downloaded from the Canon support webpage (www.usa.canon.com/downloadlibrary).

If you are unable to retrieve the network key or other settings refer to the manual of your access point or router, or contact its manufacturer.

5



- Disconnect the USB cable.
- Click **Next**.



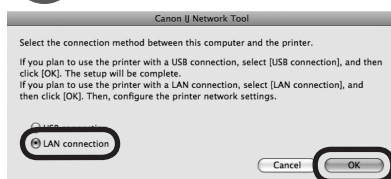
3-B

Connecting to AirPort Networks With Multiple Access Points

Use These Instructions if Your Network Has Multiple AirPort Networking Devices
(Including Time Capsule, AirPort Extreme, AirPort Express, etc.)

For example: Airport Extreme AND Time Capsule

1



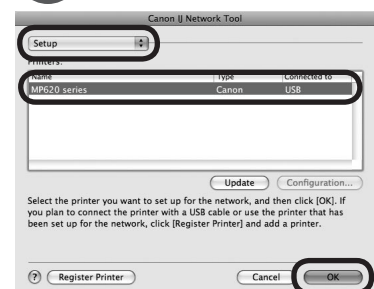
On the **Canon IJ Network Tool** screen, select **LAN connection**, then click **OK**.

2



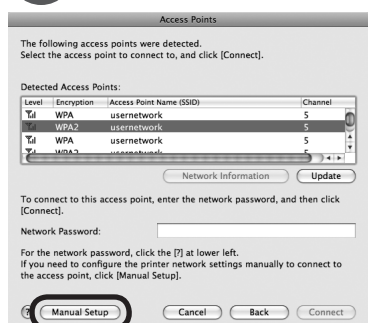
If the **Setup Preparations** dialog box appears, confirm that preparation is complete, then click **OK**.

3



Select **Setup** in the drop-down menu, select **MP620 series** in **Printers**, then click **OK**.

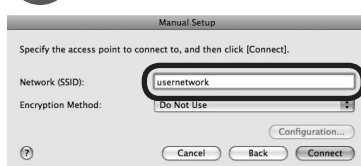
4



Click **Manual Setup**.

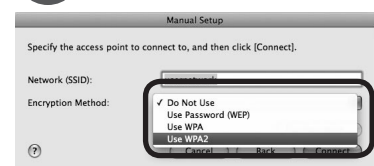
- Confirm the **Encryption** column to check the encryption method being used.

5



Enter the **Network Name**. (Also called SSID or Service Set Identifier that you would like the machine to join.)

6



Select **Use WPA2** from the drop-down menu. If the network uses WPA/WPA2 security, selecting **Use WPA** will give the same results.



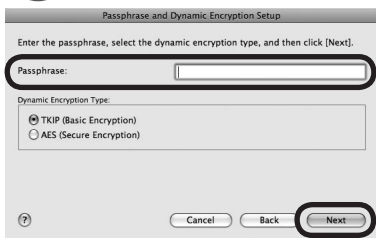


7



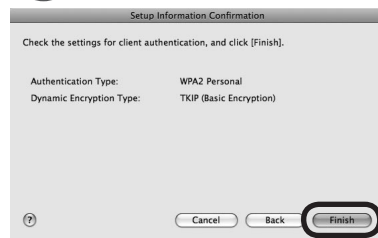
Check the **Authentication Type** and click **Next**.

8



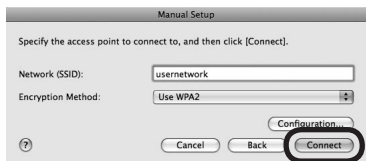
Enter your **Passphrase** (network password) and click **Next**.
For the encryption method, the default setting (TKIP: Basic Encryption) should be used.

9



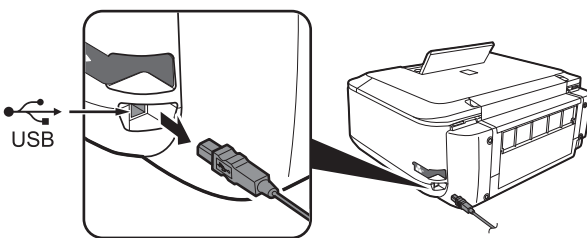
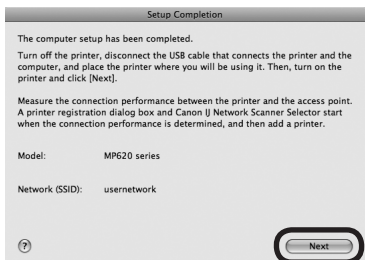
Check the settings and click **Finish**.

10



Click **Connect**.

11

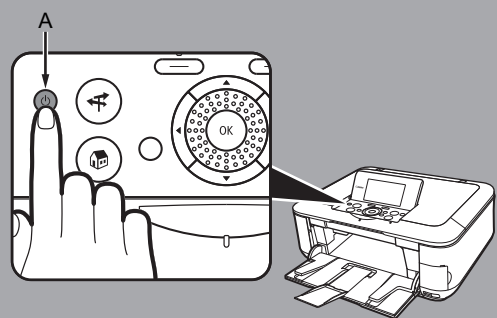


a. Disconnect the USB cable.
b. Click **Next**.

4

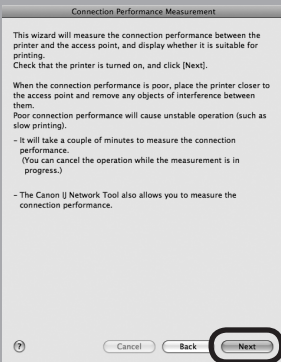
Measure Wireless Performance

1



If you need to move the machine to another location, you may now turn it off (A). Place the machine to where you will use it, then turn it back on.

2

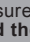


On the **Connection Performance Measurement** dialog box, click **Next**.

3



Confirm the measurement results, then click **Finish**.

Ensure that  is displayed in **Connection performance between the printer and the access point**.
The Printer Setup Utility and Canon IJ Network Scanner Selector will start up.

 To check whether the new location is better, click **Remeasurement**.
Measurement of the communication status is performed again.

5

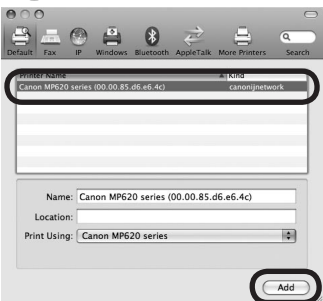
Add the Machine



- To troubleshoot the setup, refer to the printed manual: **Network Setup Troubleshooting**.
- When using Mac OS X v.10.5.x, the machine's Card Slots are not accessible when using the machine over a network. To access the Card Slots from a computer using Mac OS X v.10.5.x, a USB cable must be used.

Mac OS X v.10.5.x

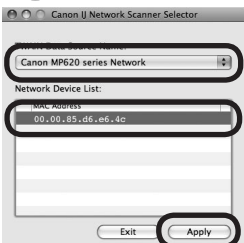
1



Wait for a while, then select **Canon MP620 series** and click **Add**.

When selecting the printer to add, make sure the kind listed for the printer is **canonijnetwork**.
It may take up to 15 seconds for the network printer to appear in this list.

2



Select **Canon MP620 series Network** in **TWAIN Data Source Name** and the MAC address of the machine in **Network Device List**, then click **Apply** to use the machine as a scanner.

3



Confirm that a check mark is displayed, then click **Exit** to close the dialog box.

This completes the installation.
The device is now installed and ready to use over the AirPort network.





Mac OS X v.10.4.x

1



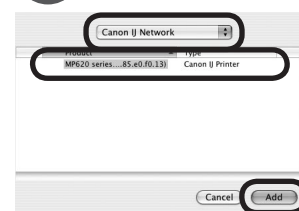
When the **Printer List** screen appears, click **Add**.

2



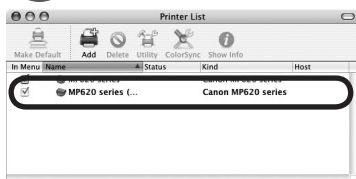
Click **More Printers** in the **Printer Browser** screen.

3



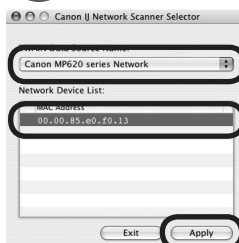
Select **Canon IJ Network** in the drop-down menu, select your machine's name in the list of printers, then click **Add**.

4



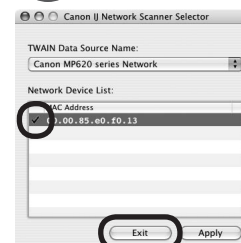
Confirm that your **MP620 series** is added to the list of printers.

5



Select **Canon MP620 series Network** in **Twain Data Source Name** and the MAC address of the machine in **Network Device List**, then click **Apply** to use the machine as a scanner.

6



Confirm that a check mark is displayed, then click **Exit** to close the dialog box. This completes the installation. The device is now installed and ready to use over the AirPort network.

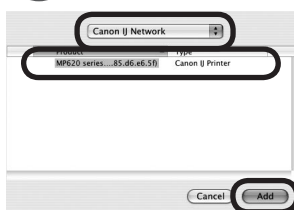
Mac OS X v.10.3.9

1



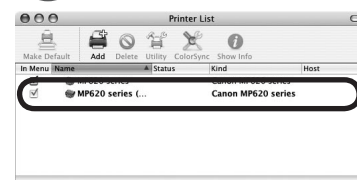
When the **Printer List** screen appears, click **Add**.

2



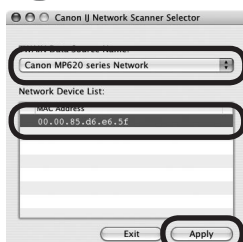
Select **Canon IJ Network** in the drop-down menu, select your machine's name in the list of printers, then click **Add**.

3



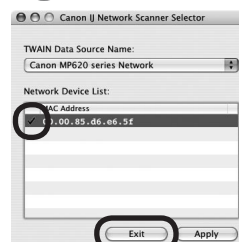
Confirm that your **MP620 series** is added to the list of printers.

4



Select **Canon MP620 series Network** in **Twain Data Source Name** and the MAC address of the machine in **Network Device List**, then click **Apply** to use the machine as a scanner.

5



Confirm that a check mark is displayed, then click **Exit** to close the dialog box. This completes the installation. The device is now installed and ready to use over the AirPort network.

Apple, AirPort Extreme, Macintosh and Time Capsule are trademarks of Apple, Inc., registered in the U.S. and other countries.

Getting Help from Canon

Visit www.canontechsupport.com

Call 1-800-828-4040

Monday - Friday (excluding holidays),
during the warranty period

Getting Help from Canon

Visit www.canon.ca

Call 1-800-652-2666

Monday - Friday (excluding holidays),
during the warranty period