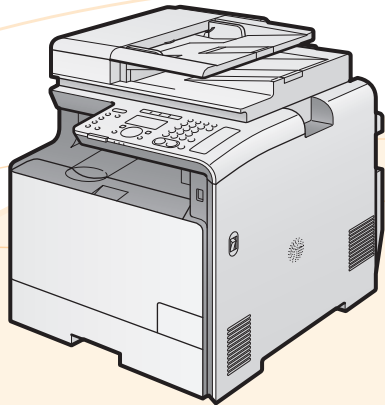


Canon

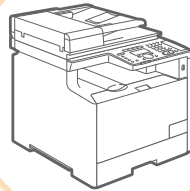
Color imageCLASS

MF B3B0Cdw

Starter Guide



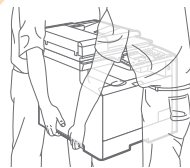
1



Preface

 Next Page

2



Installing the Machine

 P. 6

3



Configuring and
Connecting the Fax

 P. 16

4



Connecting to a Computer
and Installing the Drivers

 P. 20

 **Read this guide first.**

Please read this guide before operating this product.

The remarks for important safety instructions are described in "Basic Operation Guide." Read the guide also.

After you finish reading this guide, store it in a safe place for future reference.

Appendix

 P. A-1

Checking the Supplied Accessories

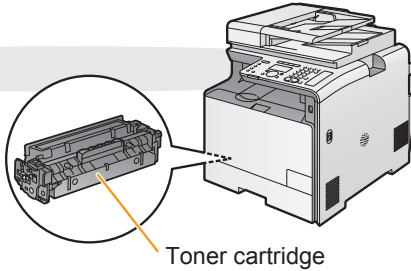
1. Confirm that all the supplied accessories are contained in the box.

If an item is missing or damaged, please contact our Canon Authorized Service Facilities or the Canon Customer Care Center.

The machine unit

The following parts are already installed.

- Paper cassette
- Toner cartridges



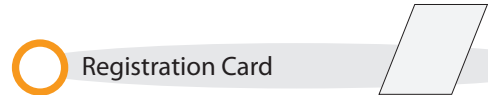
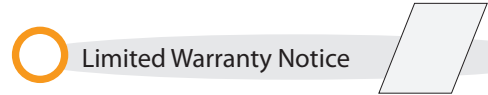
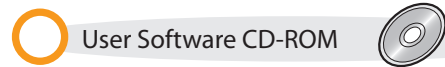
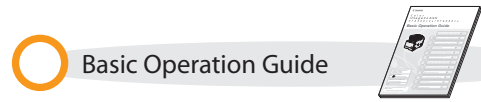
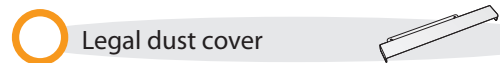
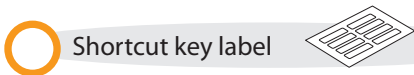
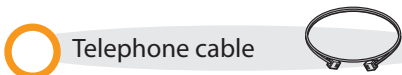
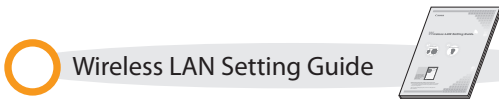
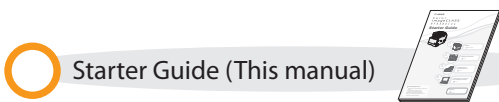
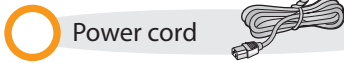
About the LAN cable

The machine does not come with a LAN cable, router, or hub. Have them ready as needed.

- Use a Category 5 or higher twisted pair cable.
- If you want to connect the machine to a 100BASE-TX Ethernet network, all the devices to be connected to the LAN must support 100BASE-TX.

About the USB cable

The machine does not come with a USB cable. Have cables ready as needed.



Supplied Toner Cartridges

The average yield of the toner cartridge that comes with the machine is as follows.

Canon Cartridge 118 Black Starter	Average yield of K (Black) toner cartridge* ¹ : 1,200 sheets
Canon Cartridge 118 Yellow Starter Canon Cartridge 118 Magenta Starter Canon Cartridge 118 Cyan Starter	Average yield of Composite Y (Yellow), M (Magenta), and C (Cyan) toner cartridges* ¹ : 1,400 sheets

*¹ The average yield is on the basis of "ISO/IEC 19798"^{**2} when printing A4 size paper with the default print density setting.

^{**2} "ISO/IEC 19798" is the global standard related to "Method for the determination of toner cartridge yield for color printers and multi-function devices that contain printer components" issued by ISO (International Organization for Standardization).

The average yield of the replacement toner cartridge varies from that of the supplied toner cartridge.

To purchase replacement toner cartridges, see "About Replacement Toner Cartridges" in the e-Manual.

User Software CD-ROM

About the Drivers and Software

The drivers and software included in the CD-ROM supplied with this machine are as follows.

MF Drivers

Printer driver	You can print from an application to the machine once you have the printer driver installed on your computer. Printer Drivers: UFR II LT/UFR II LT (XPS) Printer Driver • UFR II LT (XPS) is for Windows only.
Fax driver	If you install the fax driver on your computer, you can select "Print" from an application, select the Canon fax driver as a printer, and specify the output destination and options. The fax driver converts the data into an image that conforms to standard fax protocols so that the data can be printed or saved using the recipient's fax machine.
Scanner driver	You can use the machine as a scanner once you have the scanner driver installed on your computer.
Network Scan Utility	You need this utility software to use the machine as a network scanner. It is automatically installed along with the scanner driver.

MF Toolbox

MF Toolbox*	The MF Toolbox provides a group of commands for you to open a scanned image in an application, send it as an e-mail attachment file, store it on the hard disk, etc.
-------------	--

Others

Presto! PageManager	You can handle scanned images in many ways using this software.
---------------------	---

* Some features of the MF Toolbox for Macintosh may differ from those of the MF Toolbox for Windows. For details, see the Mac Scanner Driver Guide.

Supported Operating Systems

○: Supported —: Not supported

	Windows 2000/XP	Windows Vista/7	Windows Server 2003	Windows Server 2008	Mac OS X (version 10.4.9 or later)
Printer driver (UFR II LT)	○	○	○*1	○*1	○
Printer driver (UFR II LT (XPS))*2	—	○	—	○*1	—
Fax driver	○	○	○*1	○*1	○
Scanner driver	○	○	—	—	○
Network Scan Utility	○*1	○*1	—	—	○*1
MF Toolbox	○	○	—	—	○
Presto! PageManager	○	○	—	—	—

*1 Supported only over network connections.

*2 For 32-bit operating systems only. For Windows Vista/Server 2008, Service Pack 1 or later must be installed.

About the Supplied Manuals

Read this manual first.
This manual describes the settings for setting up the machine and installing the software. Be sure to read this manual before using the machine.

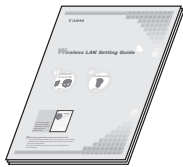
Starter Guide This manual



- Preface
- Installing the Machine
- Configuring and Connecting the Fax
- Connecting to a Computer and Installing the Drivers
- Appendix

Read this manual with the Starter Guide.
This manual describes the wireless LAN setup procedures and the causes and solutions for troubles you might face during setup. Be sure to read this manual when connecting the machine to a wireless LAN.

Wireless LAN Setting Guide



- Setting the wireless LAN
- Troubleshooting
- Appendix

Read this manual next.
This manual describes the basic use of the machine.

Basic Operation Guide



- Before Using the Machine
- Document and Paper Handling
- Copying
- Printing from a Computer
- Registering Destinations in the Address Book
- Using the Fax Functions
- Using the Scan Functions
- Maintenance
- Troubleshooting
- Registering/Setting the Various Functions
- Appendix

Read this manual for how to set Send features.
This manual describes setting for sending scanned data to E-mail and/or file servers.

Send Setting Guide * The Send Setting Guide is included in the User Software CD-ROM.



- Send to E-mail Function
- Store to Shared Folder Function

Read the desired chapter to suit your needs.
The e-Manual is categorized by subject to find desired information easily. For details about using the e-Manual, refer to "Using the e-Manual" in "Appendix."

e-Manual * The e-Manual is included in the User Software CD-ROM.

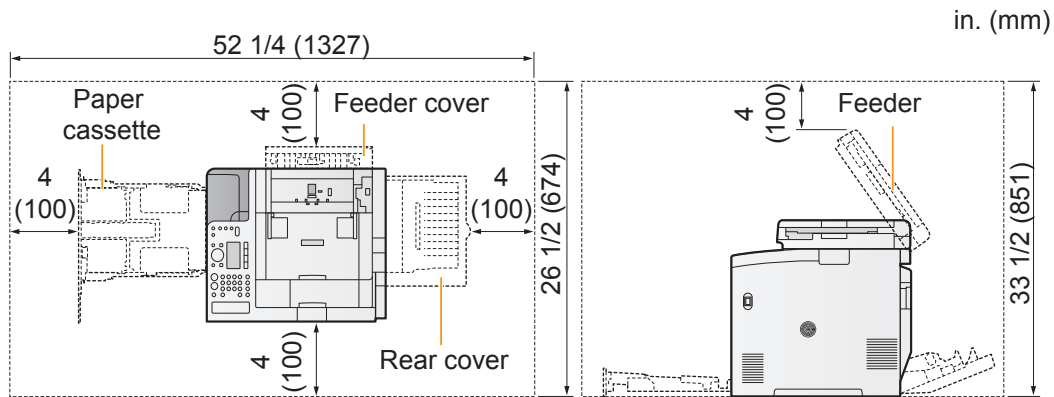


- Important Safety Instructions
- Basic Operation
- Copy
- Fax*1
- Print*1
- Scan*1
- Network Settings
- Security
- Setting and Managing from Computer
- Troubleshooting
- Maintenance
- Setting Menu List
- Specifications

*1 If you are using Macintosh, see the following Driver Guides or Help for more details on these functions. You can find the driver guides in the following locations on the User Software CD-ROM.

- Mac UFR II Printer Driver Installation Guide → [Documents] - [Print] - [Guide] - [index.html]
- Mac Fax Driver Installation Guide → [Documents] - [FAX] - [Guide] - [index.html]
- Mac Scanner Driver Guide → [Documents] - [Scan] - [Guide] - [index.html]

Determining the Installation Site



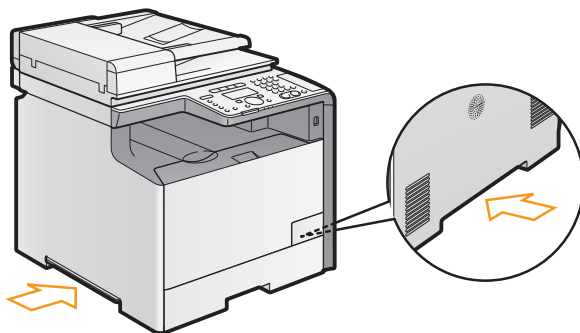
Notes on wireless LAN

- This product is designed for indoor use at a distance of 164'/50 m or less from an access point (the distance may vary depending on the communication speed or environmental conditions). Keep it at an appropriate distance.
- Check whether or not anything is blocking communication. The signal may be degraded when passing through walls or floors. Install accordingly.
- Radio wave interference may occur if any radio wave emitting equipment (i.e. microwave oven) is located near the product and its radio waves are in the same frequency band as the radio waves used by the wireless LAN. Keep the product as far as possible from sources of radio wave interference.

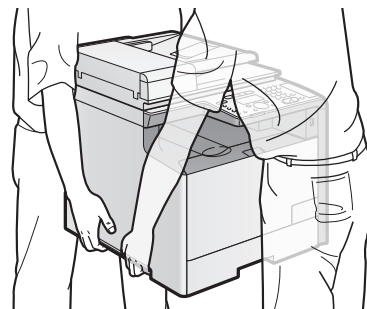
Carrying the Machine to the Installation Site and Removing the Packing Materials

1. Take the machine out of the plastic bag, and then carry to the installation site.

- 1 Hold the grips.



- 2 Carry the machine with two or more people.

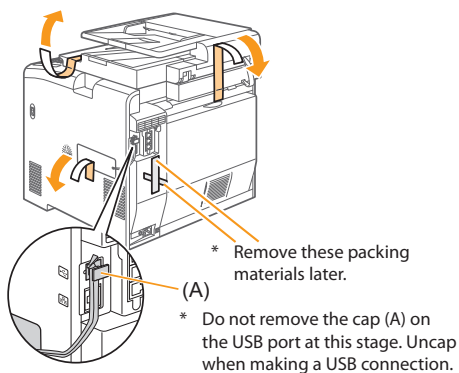
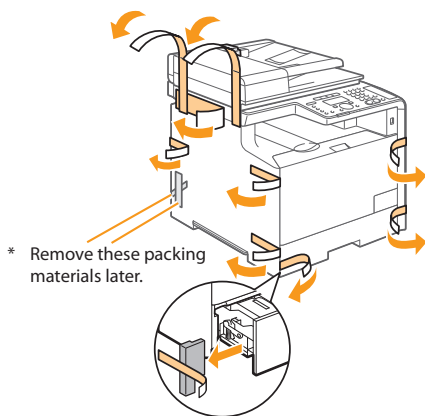


2. Remove the packing materials.

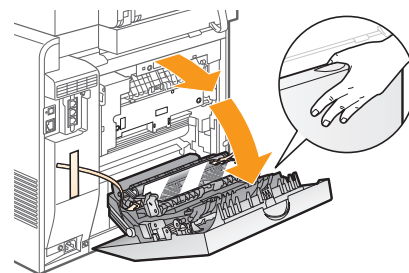
* The packing materials may be changed in form or placement, or may be added or removed without notice.

A loud noise occurs when you open the rear cover or remove the packing materials with tape. This is not a malfunction.
Although a loud noise occurs when you remove the packing materials inside the machine, this is not a malfunction.

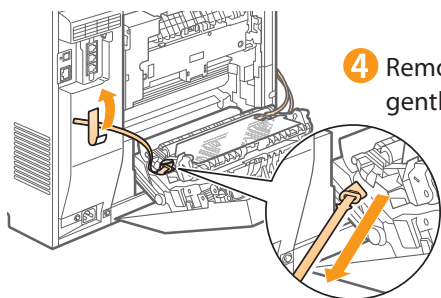
1 Remove the packing materials.



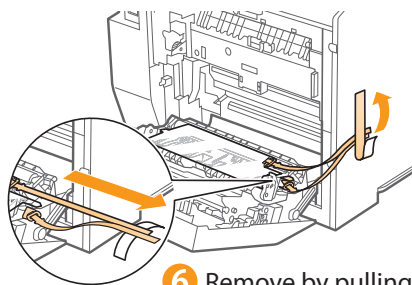
2 Open the rear cover.



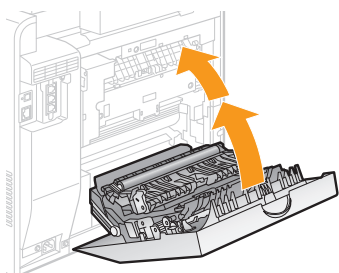
3 Remove the packing materials.



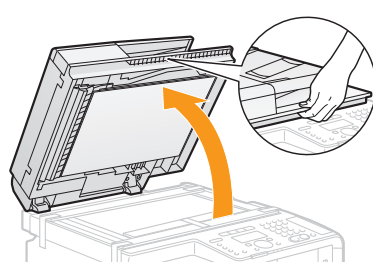
5 Remove the packing materials.



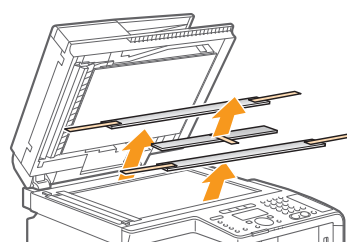
7 Close the rear cover.



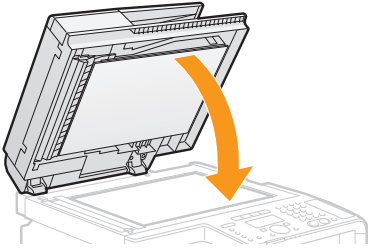
8 Open the feeder.



9 Remove the packing materials with tape.

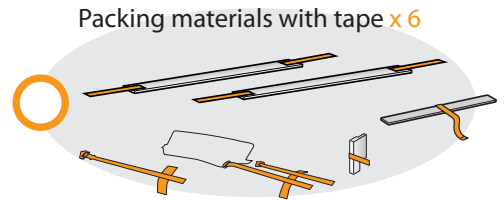


10 Close the feeder.



Check!

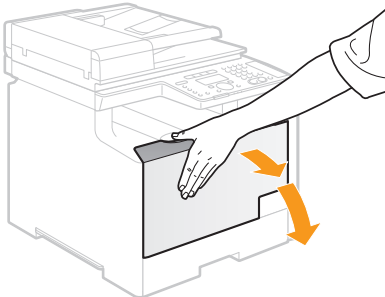
Make sure that the following packing materials are all removed from the machine.



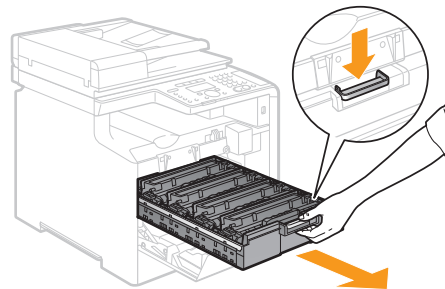
Preparing to Use the Toner Cartridges

1. Open the front cover and pull out the toner cartridge tray.

1 Open the front cover.



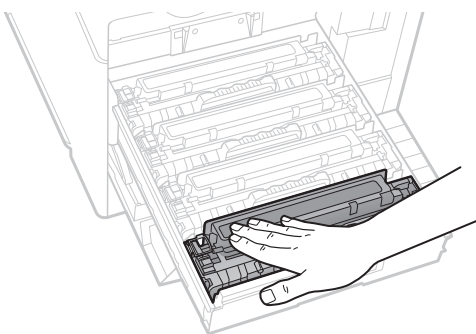
2 Press the lever.



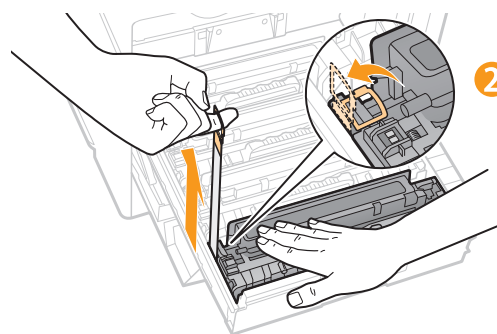
3 Pull out the toner cartridge tray.

2. Pull out the sealing tapes on the four toner cartridges.

1 Hold down the toner cartridge.



2 Remove.

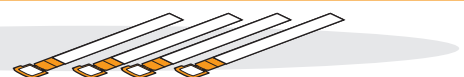


3 Pull the sealing tape completely out. The full length of the sealing tape is approximately 20 in. (50 cm).

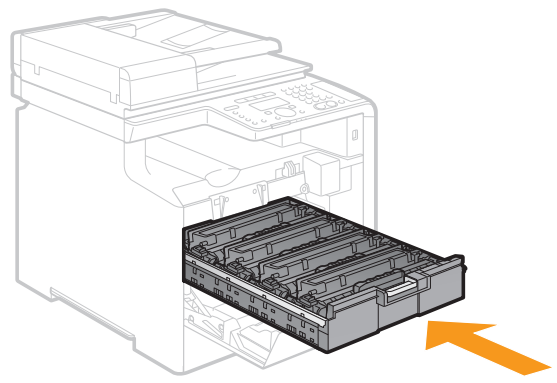
Check!

Make sure that the following packing materials are all removed from the toner cartridges.

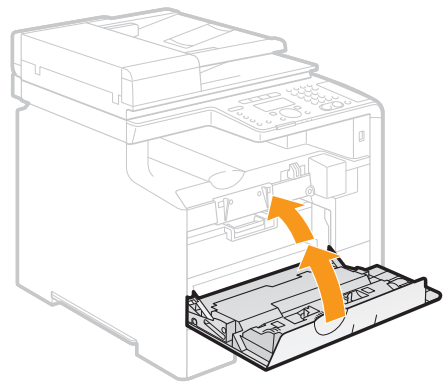
Sealing tape x4



3. Push the toner cartridge tray back in, and then close the front cover.

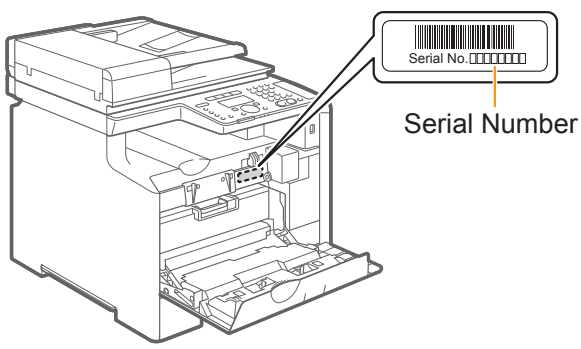


1 Push in the toner cartridge tray.

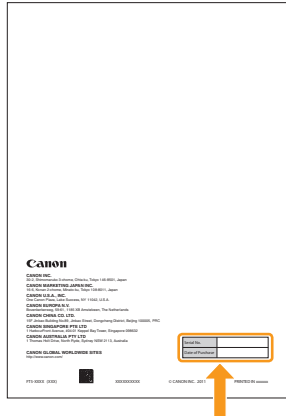


2 Close the front cover.

Write down the serial number and purchase date on the back cover of the Basic Operation Guide enclosed in the package. You need this information when contacting your local authorized Canon dealer or Canon Customer Care Center.



The serial number is indicated on the label located inside the front cover of the machine (a character string of 3 letters and a 5-digit number).

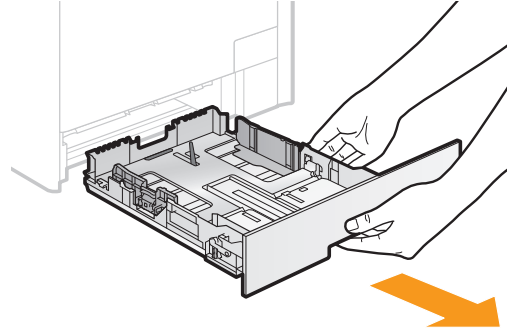


Write down the information here (on the back cover of the Basic Operation Guide).

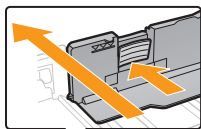
○ Loading Paper

1. Pull out the paper cassette.

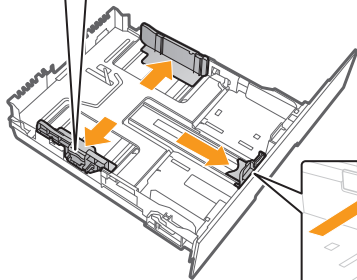
Hold the paper cassette with both hands.



2. Slide the paper guides, and load the paper.



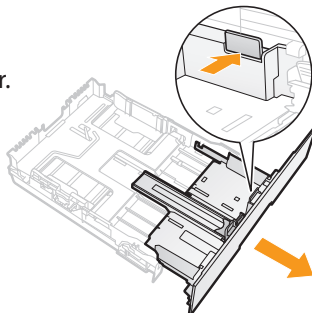
- ① Hold the lock release lever and slide the side paper guides.
Spread the paper guides a little wider than the actual paper width.



- ② Hold the lock release lever and slide the paper guide at the front center.
Spread the paper guide a little wider than the actual paper width.

When loading Legal size paper

- ① Hold the lock release lever.



- ② Adjust the length of the paper cassette.

When changing the size of the paper to be loaded

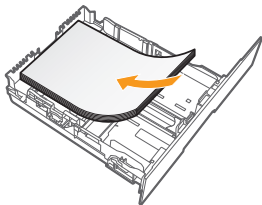
Be sure to register the paper size.

At factory shipment, the machine's default settings are configured for LTR paper size and Plain 2 paper type.

- ➔ Proceed to "Setting the Paper Size and Type" on p. 15.

3 Load the paper.

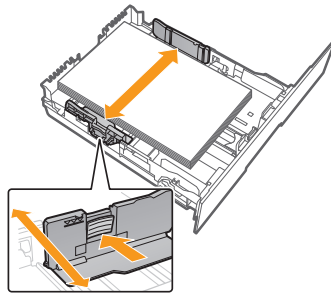
Load the paper that it aligns with the rear side of the paper cassette.



⊕ **When using envelopes**
For details on how to load media, see "Basic Operation Guide."

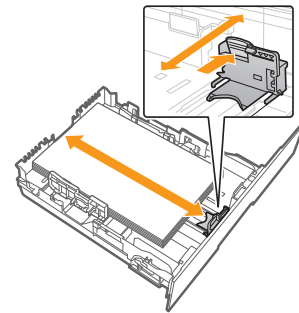
4 Hold the lock release lever and slide the side paper guides.

Align the paper guides securely against the edges of the paper.

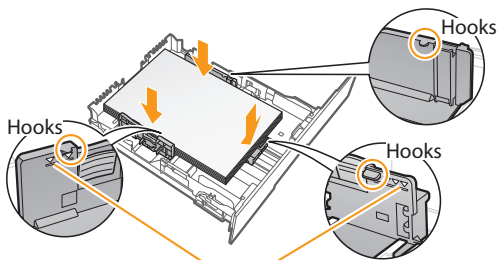


5 Hold the lock release lever and slide the paper guide at the front center.

Align the paper guide securely against the edge of the paper.



6 Set the paper under the hooks.



Load limit mark.

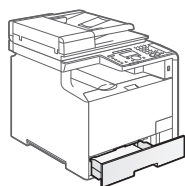
Check!

Make sure that the paper stack does not go over the line of the load limit mark.

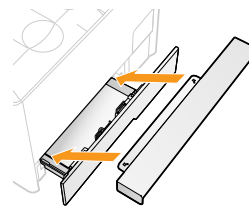


When loading Legal size paper

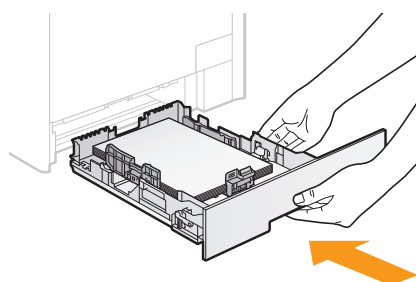
When the paper cassette is inserted with it extended, the front side of the paper cassette is not flush with the front surface of the machine as shown in the figure.



Set the Legal dust cover on the paper cassette.

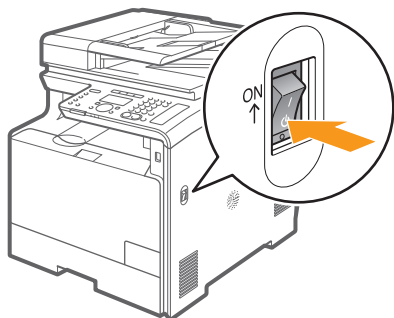


3. Set the paper cassette.

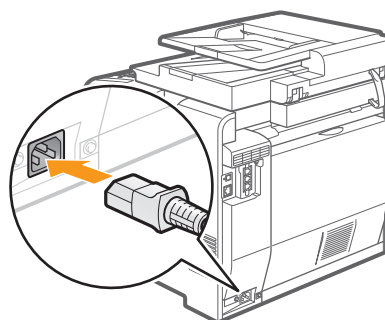


Connecting the Power Cord

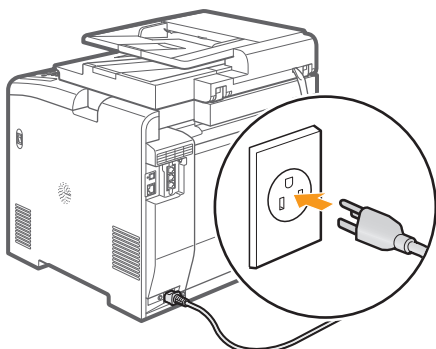
- 1 Make sure that the machine is switched OFF.



- 2 Plug the power cord into the power socket.



- 3 Plug the power cord into an AC power outlet.

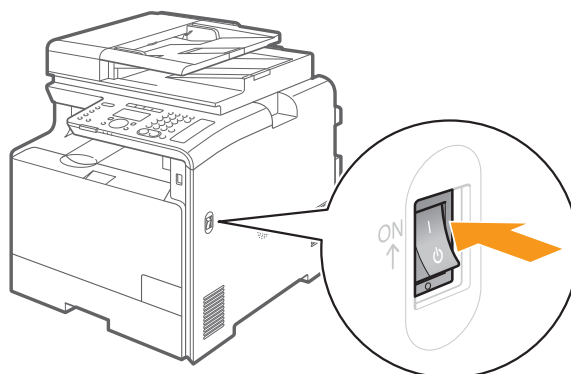


Do not connect the USB cable. Connect the USB cable when installing the software.

Turning ON the Machine and Specifying the Initial Settings

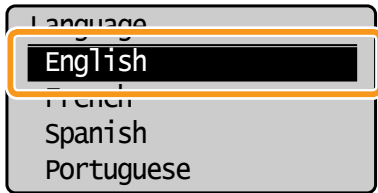
1. Turn ON the machine.

The machine enters the Sleep mode to conserve energy when no operations are performed for a certain period of time. To cancel the Sleep mode, press the [⏻] (Energy Saver) key on the operation panel.

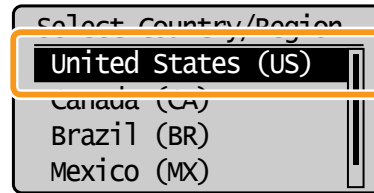


2. Specify initial settings.

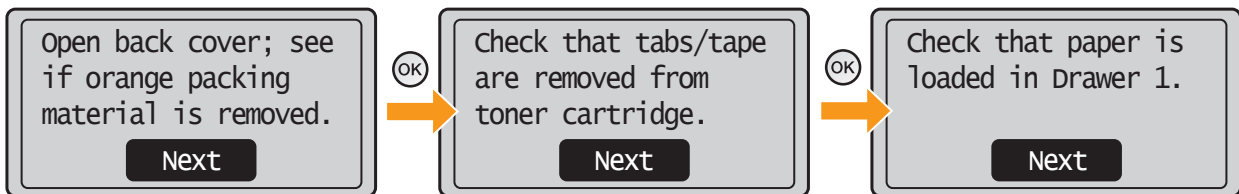
- 1 Press [▲] or [▼] to select, and then press [OK].



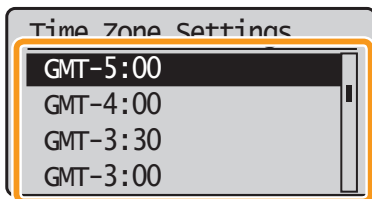
- 2 Press [▲] or [▼] to select, and then press [OK].



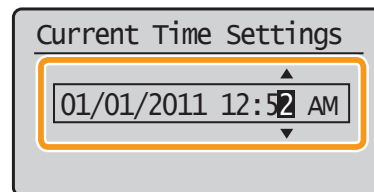
- 3 Read the messages, and then press [OK].



- 4 Press [▲] or [▼] to select, and then press [OK].

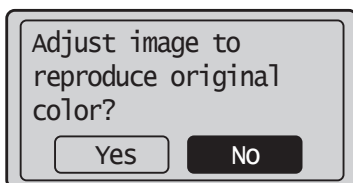


- 5 Enter the date and time, and then press [OK].



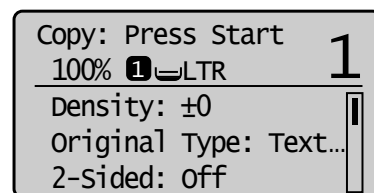
- Move the cursor with [◀] or [▶].
- Press [▲] or [▼] to select the number or switch to <AM> or <PM>.

- 6 Press [OK].



- You can perform color correction by selecting <Yes> to obtain optimum copy results or printout results. For details on the procedure, see the following **"Performing Color Correction."**

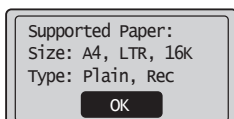
- 7 The initial screen appears when the initial setup is complete.



Performing Color Correction

Color correction takes approximately 165 seconds.

- 1 Make sure that paper is loaded, and then press [OK].



Check the temperature of the installation site

If the room temperature is low, correction may not be performed properly.

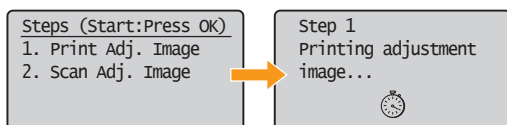
If <Adjustment failed.> appears

- Is the paper loaded correctly?
→ Load plain paper or recycled paper of A4/Letter size in the paper cassette.
- Is the test chart placed on the platen glass correctly?
→ Place the test chart with the print side face down and the black stripe toward the back of the machine.
- Has a paper jam occurred?
→ Remove the jammed paper.

If you want to perform color correction again, press [⊙] (Menu), and then select the following settings in the following order.

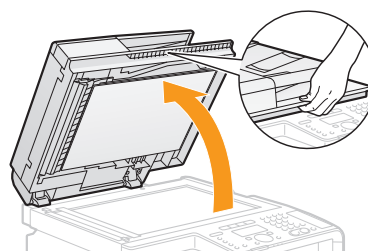
→ <Adjustment/Maintenance> → <Auto Gradation Adjustment> → <Copy Image Adjustment>

- 2 Confirm the procedure for the color correction, and then press [OK].

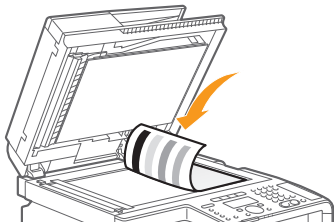


A test chart (adjustment image) is printed.

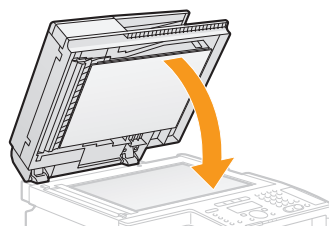
- 3 Open the feeder.



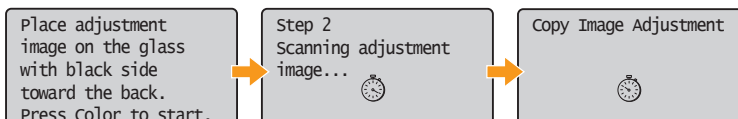
- 4 Place the test chart on the platen glass with the print side face down.
Place the paper so that the black stripe is at the back side of the machine.



- 5 Close the feeder.



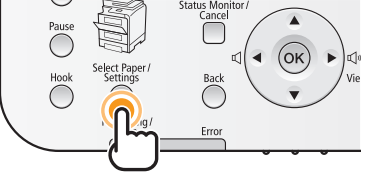
- 6 Press [Color] (Start).



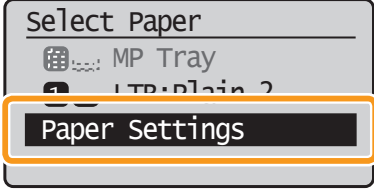
- 7 Remove the test chart (adjustment image) placed on the platen glass in Step 4.

Setting the Paper Size and Type

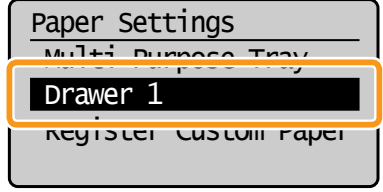
1 Press [] (Select Paper/Settings).



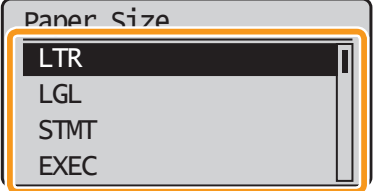
2 Press [▲] or [▼] to select, and then press [OK].



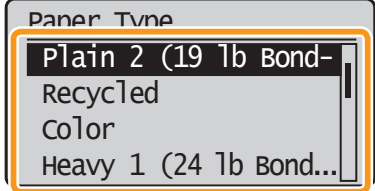
3 Press [▲] or [▼] to select, and then press [OK].




4 Press [▲] or [▼] to select, and then press [OK].



5 Press [▲] or [▼] to select, and then press [OK].



6 Press [] (Reset) to return to the standby mode.

Specifying Initial Settings for the Fax Functions and Connecting the Telephone Cable

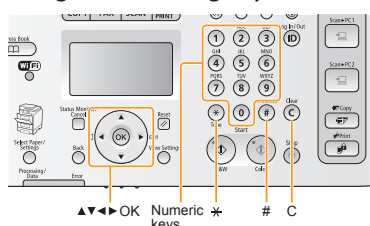
Operate the machine following the on-screen instructions and perform the following settings and connection.

- Registering the fax number and unit name
- Setting the fax receive mode
- Connecting a telephone line

If you are using pulse dialing, change the line type after specifying the settings.

Entering Text

Enter information (text, symbols, and numbers) using the following keys.



Changing the entry mode

Press [▼] to select <Entry Mode>, and then press [OK]. You can also press [*] (Tone) to change the entry mode.

Entry mode	Text that can be entered
<A>	Alphabet (capital letters) and symbols
<a>	Alphabet (small letters) and symbols
<12>	Numbers

Moving the cursor (Entering a space)

Move the cursor by pressing [◀] or [▶]. To enter a space, move the cursor to the end of the text, and then press [▶].

Entering text, symbols, and numbers

Enter using the numeric keys or [#] (SYMBOLS).

Key	Entry mode: <A>	Entry mode: <a>	Entry mode: <12>
1		@ . - _ /	1
2	ABC	abc	2
3	DEF	def	3
4	GHI	ghi	4
5	JKL	jkl	5
6	MNO	mno	6
7	PQRS	pqrs	7
8	TUV	tuv	8
9	WXYZ	wxyz	9
0	(Not available)		0
#	(space) @ . / - _ ! ? & \$ % # () [] { } < > * + = " ; : ' ^ ` \ ~		(Not available)

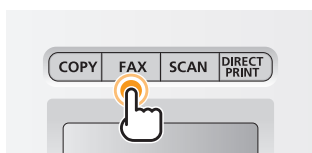
Deleting text, symbols, or numbers

To delete text, numbers, or symbols, press [⊙] (Clear).

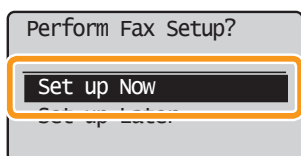
To delete all text, numbers, or symbols, press and hold [⊙] (Clear).

1. Register the fax number and unit name.

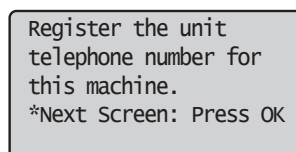
1 Press [FAX].



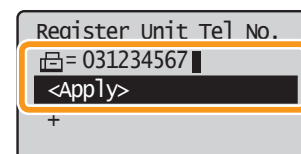
2 Press [▲] or [▼] to select, and then press [OK].



3 Press [OK].

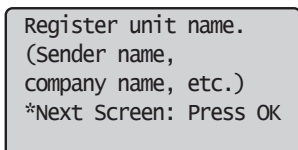


4 Enter.

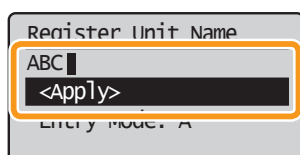


5 Press [▲] or [▼] to select <Apply>, and then press [OK].

6 Press [OK].



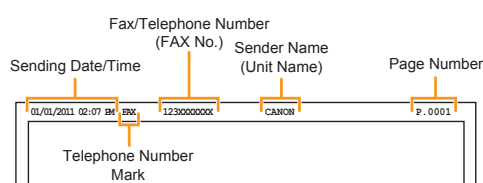
7 Enter.



8 Press [▲] or [▼] to select <Apply>, and then press [OK].

What happens with the unit name

Once the information has been registered, it is printed at the top of each page that you are sending.



2. Select the fax receive mode.

You can specify how the machine should operate for a fax call or telephone call.

By answering the prompts that appear on the display, the machine will be set to one of the following four operation modes.

<Auto><Fax/Tel Auto Switch><Answering Machine><Manual>

Do you want to use this machine for fax only (no telephone)?

Yes

No

Yes

No

Do you want to auto-receive faxes and answer phone manually?

Yes

No

Yes

No

Do you want to use an answering machine to answer the phone?

Yes

No

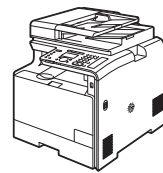
Yes

No

The receive mode is set to <Auto>.

→ Proceed to Step 3.

- Receive faxes automatically.
- Does not use the telephone.*

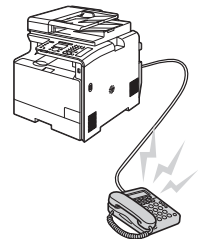


* When the telephone is connected in the auto receive mode, the telephone rings when receiving a fax or telephone call. You can answer the telephone while it is ringing. To turn off the telephone ringer, see "Incoming Ring" in the e-Manual.

The receive mode is set to <Fax/Tel Auto Switch>.

→ Proceed to Step 3.

- Receive faxes automatically.*
- Responds to a telephone call by picking up the handset.

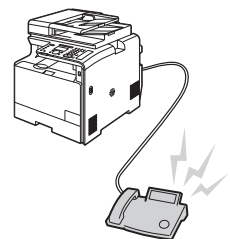


* The telephone rings on incoming calls. To turn off the telephone ringer, see "Incoming Ring" in the e-Manual.

The receive mode is set to <Answering Machine>.

→ Proceed to Step 3.

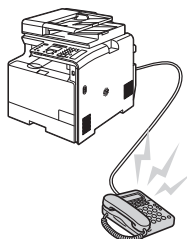
- Receive faxes automatically.
- Respond to telephone calls using the built-in answer function.
- Ring on incoming calls or faxes.



The receive mode is set to <Manual>.

→ Proceed to Step 3.

- Respond to incoming calls or faxes by picking up the handset.
- Ring on incoming calls or faxes.



3. Connect the telephone line.

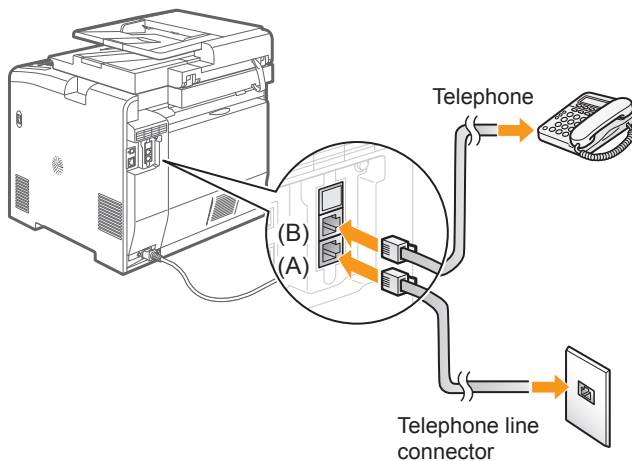
1 Press [OK].

The screen that appears varies depending on the receive mode selected.

Connect phone line.
Follow illustrations
on the next screen:
Connect line to A.
*Next : Press OK

Connect phone line.
Follow illustrations
on the next screen
to make connections:
1. Phone line to A

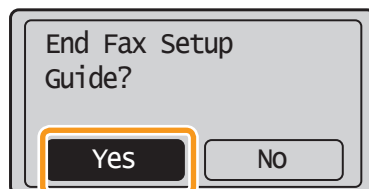
2 Connect the telephone line using the jack.



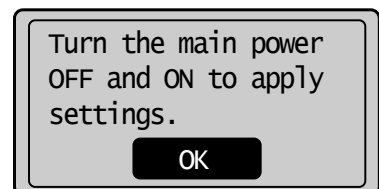
To connect an external telephone that includes fax functions
Make sure to disable its automatic fax reception feature
so it does not receive faxes automatically.

3 Press [OK] after the
telephone line has been
connected.

4 Press [◀] to select, and then press [OK].



5 Press [OK].



Fax settings and connections have been completed.

6 Restart the machine for the settings to take effect.











Turn OFF the machine, wait for at least 10 seconds, and turn it back ON.

4. Change the line type.

By default, the telephone line type is set to tone dialing. Skip the following steps in the procedure below when you choose to use tone dialing.

Follow the steps in the procedure below to select pulse dialing.

Contact your local telephone company when you are not sure of the line type that you are using.

- 1 Press [] (Menu).
- 2 Press [] or [] to select <Fax Settings>, and then press [OK].
- 3 Press [] or [] to select <Basic Settings>, and then press [OK].
- 4 Press [] or [] to select <Select Line Type>, and then press [OK].
- 5 Press [] or [] to select the line type that you are using, and then press [OK].
 - <Pulse>: Pulse dialing
 - <Tone>: Tone dialing (Default)
- 6 Press [] (Menu) to close the menu screen.

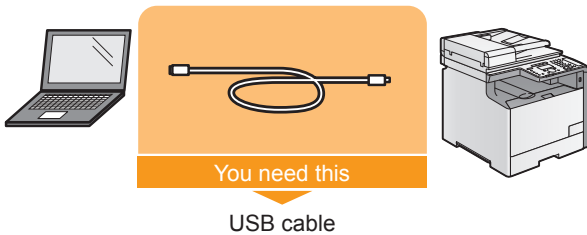
Selecting a Method for Connecting to the Machine

Select from the following three methods, depending on your environment and devices.

If you are not sure whether the router or access point you are using supports wireless LAN or wired LAN, see the instruction manual provided with the network device you are using, or contact the manufacturer.

Connecting via a USB Cable

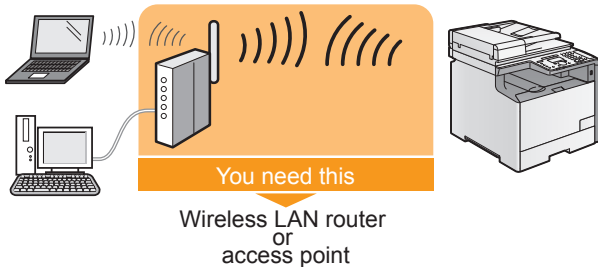
Connect them using a USB cable.



- Windows
 - Installing with USB Connection P. 24
- Macintosh
 - Installing the Software P. 27

Wireless LAN

Connect using wireless communication (radio frequency) without using a cable.

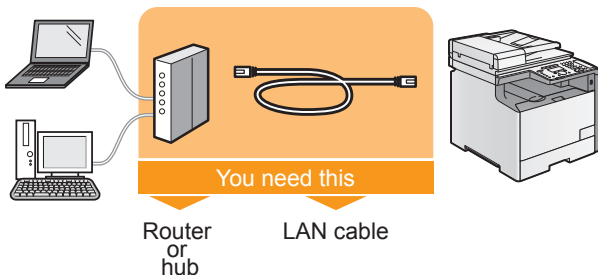


- Connecting to Wireless LAN
- Use the same procedure for both Windows and Macintosh. For details, see the separate Wireless LAN Setting Guide.

* A wireless LAN or access point that supports IEEE802.11 (b/g or n) is required.

Wired LAN

Connect them using a LAN cable.



- Connecting to Wired LAN P. 21
- Use the same procedure for both Windows and Macintosh.

* Check to make sure that there is a free port for connecting the machine or the computer you use to the router or hub.
* Use a Category 5 or higher twisted pair cable for the LAN.

Explanation of Terminology

• LAN (Local Area Network)

It is a system that enables the sharing of information by connecting multiple devices such as computers that are within a limited area, such as a single room or inside the same building, using cables or wireless communication (radio waves).

• Wireless LAN

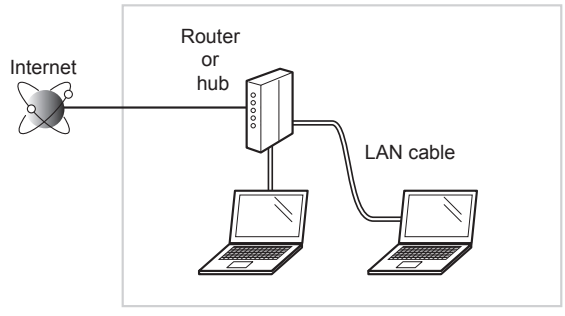
It is a network that connects multiple devices using wireless communication (radio waves) without using cables. Generally, it connects to the network using a relay device called a wireless LAN router or access point.

Connecting to Wired LAN

Before adding the machine to a wired LAN

The computer and router/hub need to be connected using LAN cables and the network settings need to be complete.

- For more information, see the instruction manual for the network device you are using, or contact the networking device manufacturer.
- If the network has not been set up properly, you will not be able to use the machine on the wired LAN network even if you perform the procedure described below.

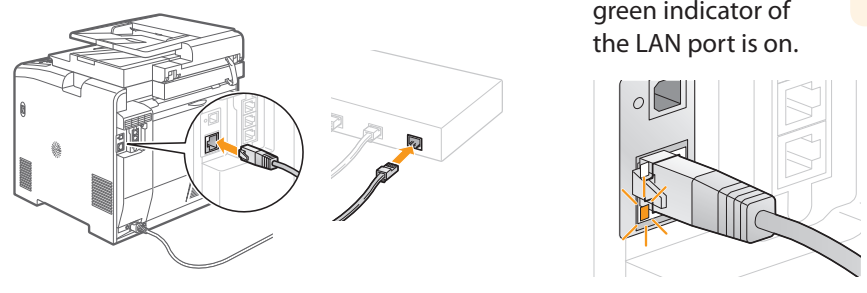


Precautions when connecting to a wired LAN

- The configuration of your computer or networked device, as well as the router functions, setting methods and security settings, vary depending on your environment.
- You can connect the machine to either a wireless LAN or wired LAN, but you cannot use both at the same time.
- If using the machine in your office, consult with your network administrator.

1. Connect the LAN cable.

- 1 Connect the cable.
- 2 Make sure that the green indicator of the LAN port is on.



About the LAN cable

- The machine does not come with a LAN cable, router, or hub. Have them ready as needed.
- Use a Category 5 or higher twisted pair cable for the LAN.

If the indicator is not on
Check the following.

- Whether the machine and router/hub are connected using a LAN cable
- Whether the power of the machine is turned ON

2. The machine sets the IP address automatically. Wait approximately two minutes.

If you want to set the IP address manually, see the following.

- e-Manual "Setting the IPv4 Address"
- e-Manual "Setting the IPv6 Address"

Installing via Network Connection

- For Windows
 - Installing via Network Connection P. 22
- For Macintosh
 - Installing the Software P. 27

Installing via Network Connection (For Windows)

1. Check the following points.

- The computer and machine are connected via the network.
- The power of the machine is turned ON.
- IP address is properly set up. ➡ Proceed to "Checking the IP Address" on p. A-3.

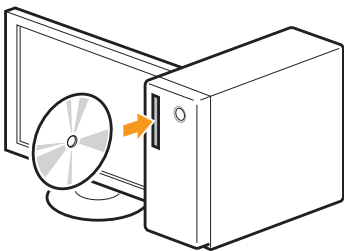
2. Turn on the computer, and then log on as a user with administrative privileges.

If you have already logged on, exit all applications which are running.

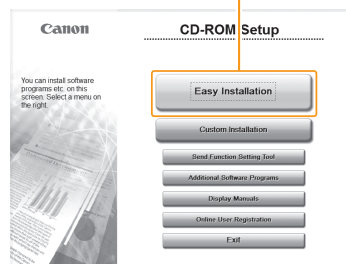
3. Install the MF Drivers and MF Toolbox.

- * When you are in an IPv6 environment, or when installing the UFR II LT (XPS) printer driver using network connection, you cannot use the procedure below to install the software. Refer to "Installing the MF Drivers on the WSD Network" in the e-Manual to install the MF Drivers.
- * You may not use the scan function in the IPv6 environment.

1 Insert the CD-ROM.



2 Click.



[Easy Installation] performs the installation of the following software.

- Printer driver
- Fax driver
- Scanner driver
- MF Toolbox

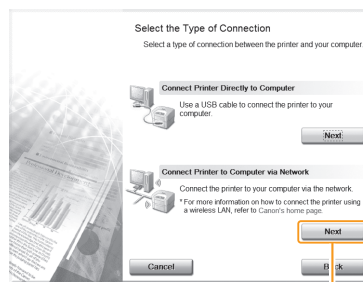
To add the following software and manual to the installation, select [Custom Installation].

- Presto! PageManager
- e-Manual

➡ e-Manual "Installing the MF Drivers and MF Toolbox"

If the top screen does not appear

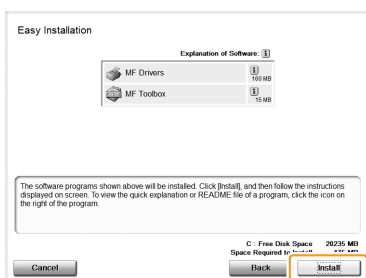
- Windows 2000, XP, and Server 2003
 1. From the [Start] or [start] menu, select [Run].
 2. Enter "D:\Minst.exe", and then click [OK].
 - Windows Vista, 7, and Server 2008
 1. Enter "D:\Minst.exe" in [Search programs and files] or [Start Search] under the [Start] menu.
 2. Press the [ENTER] key on the keyboard.
- * The CD-ROM drive name is indicated as "D:" in this manual. The CD-ROM drive name may differ depending on the computer you are using.



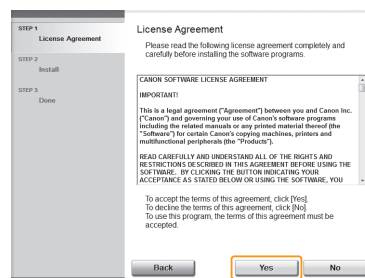
- * In Windows Server 2003/Server 2008, the [Select the Type of Connection] screen is not displayed. Proceed to Step 4.

3 Click.

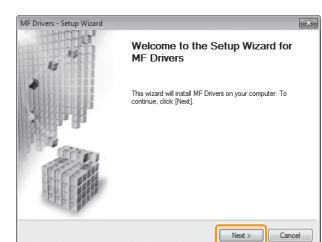
5 Read the contents of the License Agreement.



4 Click.

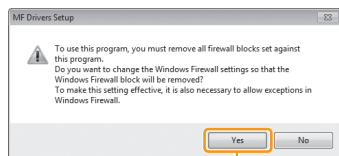


6 Click.



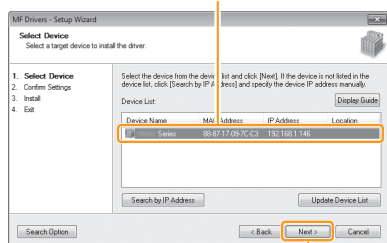
7 Click.

If the following dialog box appears



Click.

8 Select.



9 Click.

If no devices are displayed in [Device List]

Perform the following procedure.

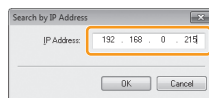
1. Check the following.
 - The computer and device are connected via the network.
 - When the machine is connected to a wireless LAN, the computer and the wireless LAN router or access point are also connected.
 - The device is turned on.
 - The IP address is set correctly.
 - The computer and device are on the same subnet.
 - Security software has been exited.

2. Click [Update Device List].

If any devices are not displayed by performing the above procedure, perform the following procedure.

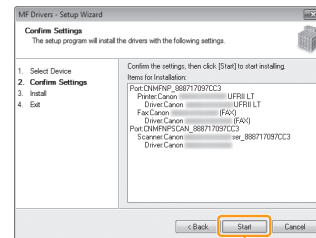
1. Click [Search by IP Address].
2. Enter the IP address of the device to be installed.

➔ Proceed to "Checking the IP Address" on p. A-3.



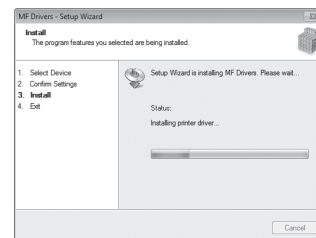
3. Click [OK].

If no devices are displayed by performing the above procedure, click [Display Guide] for information on how to solve the problem.



10 Click.

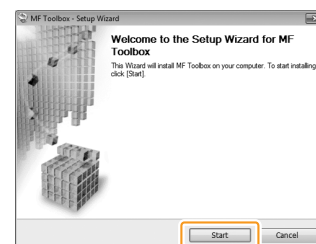
The installation starts.



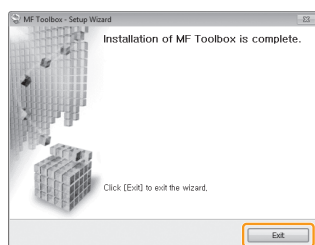
11 Click.

Next, installation of the MF Toolbox starts.

* In Windows 2000 Server/Server 2003/Server 2008, the MF Toolbox is not installed. Proceed to Step 14.

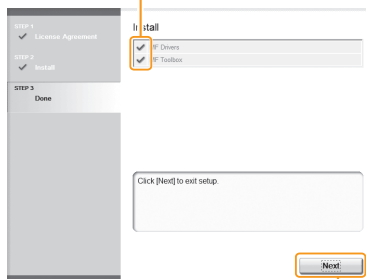


12 Click.



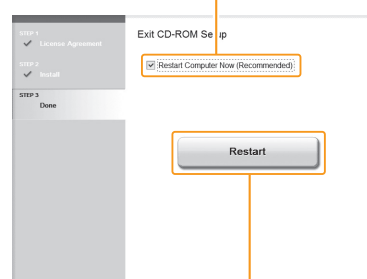
13 Click.

14 Ensure that [] is added.



15 Click.

16 Select the check box.



17 Click.

The CD-ROM may be removed once this screen appears.

Checking the Installation Results

➔ P. 26

Installing with USB Connection (For Windows)

- Connect the USB cable after installing the software.
- Ensure that the power of the machine is turned on when connecting the USB cable.

To use the UFR II LT (XPS) printer driver through the USB connection

You need to change the machine setting beforehand. Follow the procedure below.

Press [Ⓜ] (Menu) → <System Settings> → <Select PDL (Plug-n-Play)> → <USB> → Select <UFR II LT (XPS)>

* The UFR II LT (XPS) printer driver can be used on operating systems that support XML Paper Specification (XPS).

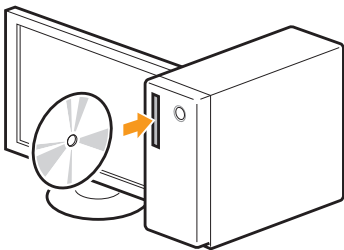
➔ "User Software CD-ROM" on p. 4.

1. Turn on the computer, and then log on as a user with administrative privileges.

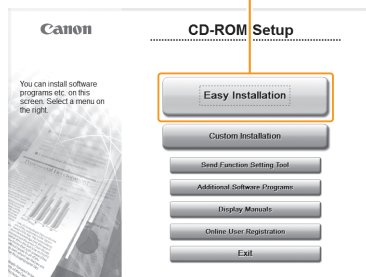
If you have already logged on, exit all applications which are running.

2. Install the MF Drivers and MF Toolbox.

1 Insert the CD-ROM.



2 Click.



[Easy Installation] performs the installation of the following software.

- Printer driver
- Fax driver
- Scanner driver
- MF Toolbox

To add the following software and manual to the installation, select [Custom Installation].

- Presto! PageManager
- e-Manual

➔ e-Manual "Installing the MF Drivers and MF Toolbox"

If the top screen does not appear

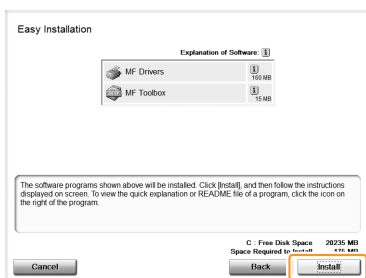
- Windows 2000, XP, and Server 2003
 1. From the [Start] or [start] menu, select [Run].
 2. Enter "D:\Minst.exe", and then click [OK].
 - Windows Vista, 7, and Server 2008
 1. Enter "D:\Minst.exe" in [Start Search] or [Search programs and files] under the [Start] menu.
 2. Press the [ENTER] key on the keyboard.
- * The CD-ROM drive name is indicated as "D:" in this manual. The CD-ROM drive name may differ depending on the computer you are using.

3 Click.

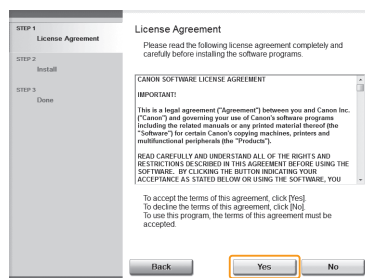


* In Windows Server 2003/Server 2008, the [Select the Type of Connection] screen is not displayed. Proceed to Step 4.

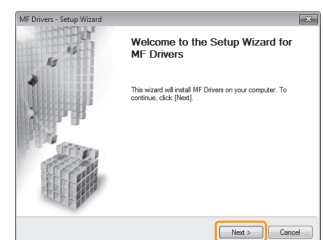
5 Read the contents of the License Agreement.



4 Click.

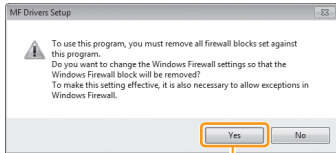


6 Click.

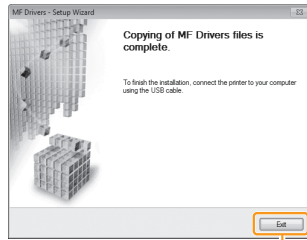


7 Click.

If the following dialog box appears



Click.



8 Click.

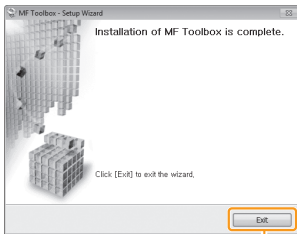
Next, installation of the MF Toolbox starts.

* In Windows 2000 Server/ Server 2003/Server 2008, the MF Toolbox is not installed. Proceed to Step 11.

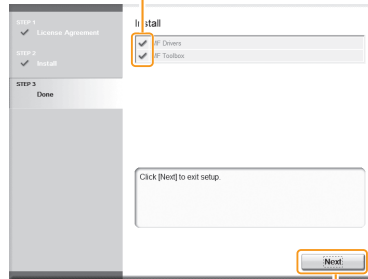


9 Click.

11 Ensure that is added.

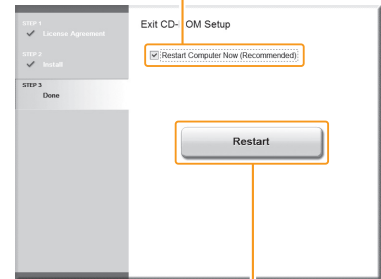


10 Click.



12 Click.

13 Select the check box.

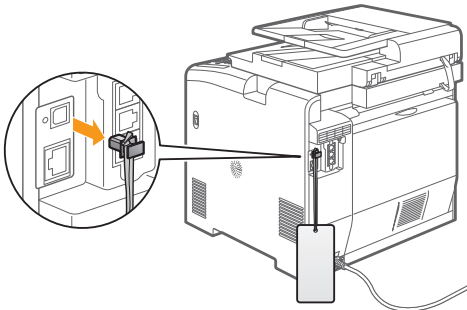


14 Click.

The CD-ROM may be removed once this screen appears.

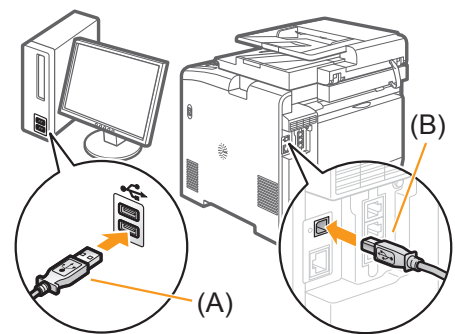
3. Connect the USB cable.

1 Remove the cap.
Remove it by pulling the string.



2 Connect the cable.

- Flat end (A): Connect to the USB port on the computer.
- Square end (B): Connect to the USB port on the machine.



When a dialog box is displayed
Follow the on-screen instructions and complete the installation.

Checking the Installation Results







➤ P. 26

Checking the Installation Results (For Windows)

Ensure that the MF Drivers and MF Toolbox are installed correctly.

Ensure that the icons for the installed software are added as follows.

Refer to "User Software CD-ROM" (p. 4) for the functions of each software component.

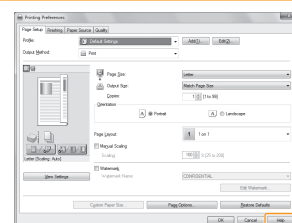
Software	Location	Icon
Printer driver	Printer folder <ul style="list-style-type: none"> Windows 2000 From the [Start] menu, select [Settings] → [Printers]. Windows XP Professional/Server 2003 From the [Start] or [start] menu, select [Printers and Faxes]. 	
Fax driver	<ul style="list-style-type: none"> Windows XP Home Edition From the [start] menu, select [Control Panel], click [Printers and Other Hardware] → [Printers and Faxes]. Windows Vista From the [Start] menu, select [Control Panel], and then click [Printers]. Windows 7 From the [Start] menu, select [Devices and Printers]. Windows Server 2008 From the [Start] menu, select [Control Panel], and then double-click [Printers]. 	
Scanner driver	[Scanners and Cameras] or [Scanners and Cameras Properties] folder <ul style="list-style-type: none"> Windows 2000 From the [Start] menu, select [Settings] → [Control Panel] → double-click [Scanners and Cameras]. Windows XP From the [start] menu, select [Control Panel], and then click [Printers and Other Hardware] → [Scanners and Cameras]. Windows Vista From the [Start] menu, select [Control Panel], and then click [Hardware and Sound] → [Scanners and Cameras]. Windows 7 1. Enter "scanner" in [Search programs and files] under the [Start] menu. 2. Click [View scanners and cameras]. 	<ul style="list-style-type: none"> For network connection  For USB connection 
MF Toolbox	Desktop	
Network Scan Utility	Taskbar	

How to Use the Online Help

In the Online Help, all the functions of the driver software and information about options are included. If you want to view descriptions of the functions and settings immediately when using the driver software, make use of the Online Help.

How to display the Help screen

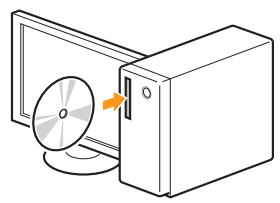
- (1) Select [File] → [Print] from the menu bar in the application.
- (2) Select the printer in [Select Printer] or [Name] in the [Print] dialog box.
- (3) Click [Preferences] or [Properties].
- (4) Click [Help].



Installing the Software (For Macintosh)

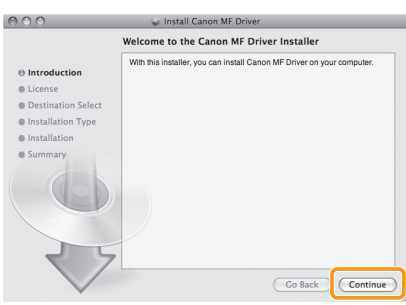
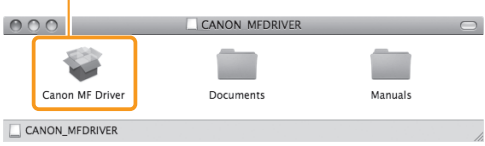
- Connect the USB cable after installing the software.
- The installation screen varies depending on the version of MAC OS X.

1 Close all applications that are running. 2 Insert the CD-ROM.



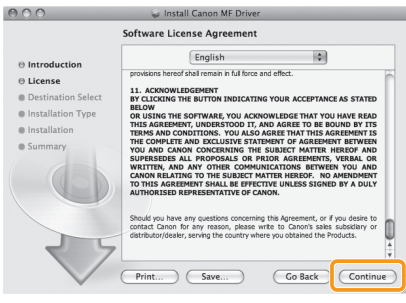
3 Double-click the CD-ROM icon.

4 Double-click.



5 Click.

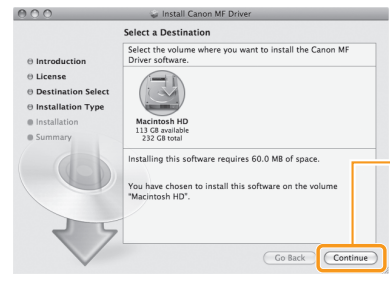
6 Read the contents of the License Agreement.



7 Click.

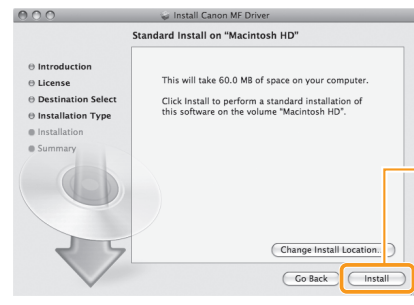


8 Click.

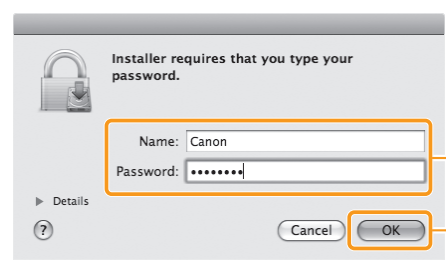


9 Click.
* You cannot change the installation location. Click [Continue].

Depending on the system environment, the [Select a Destination] dialog box may not be displayed. In this case, skip to Step 10.



10 Click.
* [Change Install Location] button may appear, but you cannot change the installation location.



11 Enter.

12 Click.
* If you are using Mac OS X 10.7.x, click [Install Software].

Depending on the system environment, the [Authenticate] dialog box may not be displayed. In this case, skip to Step 13.



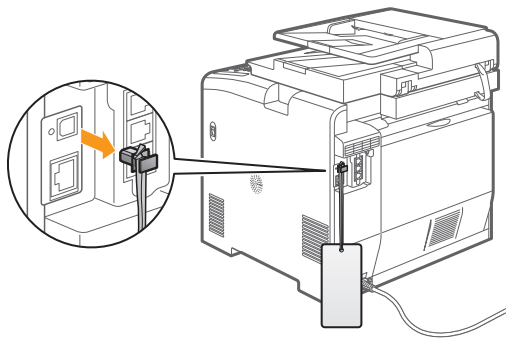
13 Click.

Connecting a USB Cable (For Macintosh)

Perform the following procedure only when connecting this machine to Macintosh with a USB cable.

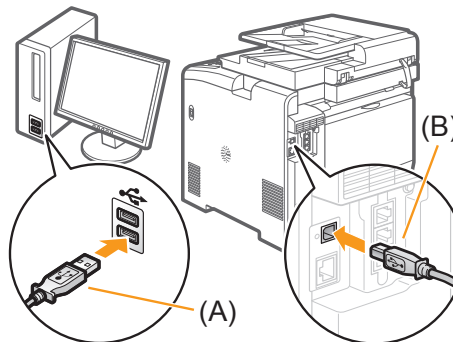
1 Remove the cap.

Remove it by pulling the string.



2 Connect the cable.

- Flat end (A): Connect to the USB port on the computer.
- Square end (B): Connect to the USB port on the machine.



➤ [Registering the Printer and Fax P. 29](#)

○ Registering the Printer and Fax (For Macintosh)

To print or send faxes from a Macintosh, you need to register this machine in the Macintosh. The registration method varies depending on the connection type. Select a method according to your environment.
 * To use the scanning function via a network connection, you need to register the scanner to the MF Toolbox. For details, see the Mac Scanner Driver Guide.

• When Using Auto IP (Bonjour)
 ⊕ Bonjour Connection P. 29

• When Using a TCP/IP Network
 ⊕ TCP/IP Connection P. 30

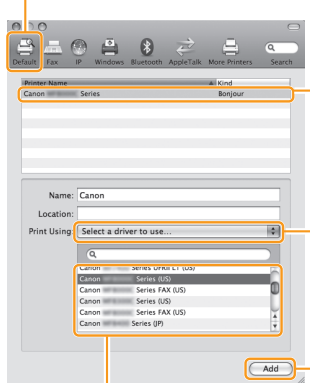
• When Connecting with a USB Cable
 ⊕ USB Connection P. 31

○ Bonjour Connection (For Macintosh)

Register the printer and fax respectively following the procedure from 1 to 10.

- 1 Open [System Preferences].
- 2 Click [Print & Fax] or [Print & Scan].
- 3 Click the [+] icon.
 If you are using Mac OS X 10.4.x, click [Print] in the [Print & Fax] dialog box to display the [Print] panel, and then click the [+] icon.

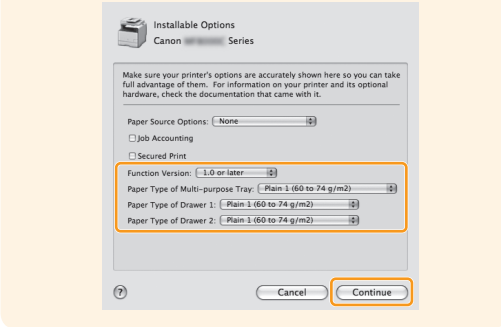
4 Select.
 If you are using Mac OS X 10.4.x, select [Default Browser].

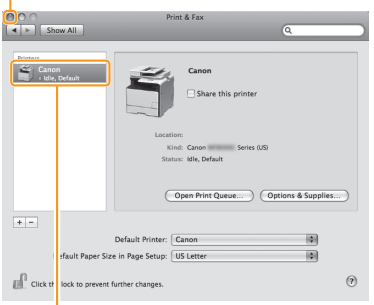


- 5 Select.
 Select a printer name for which [Bonjour] is displayed in the [Kind] or [Connection] column.
- 6 Select.
 If you are using Mac OS X 10.4.x, select [Canon] from [Print Using].

7 Select.
 If you are using Mac OS X 10.6.x or Mac OS X 10.7.x, select the corresponding driver from the separate dialog box, and then click [OK].

If the following screen appears, specify the optional settings, and then click [Continue] or [OK].



- 10 Click.

- 9 Check that this machine is added to the [Print & Fax] or [Print & Scan] dialog box.

⊕ Checking the Installation Results P. 31

TCP/IP Connection (For Macintosh)

Register the printer and fax respectively following the procedure from 1 to 11.

* The fax driver cannot be used in an IPv6 environment.

1 Open [System Preferences].

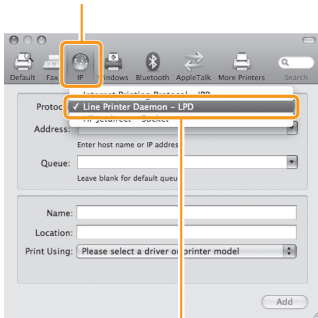
2 Click [Print & Fax] or [Print & Scan].

3 Click the [+] icon.

If you are using Mac OS X 10.4.x, click [Print] in the [Print & Fax] dialog box to display the [Print] panel, and then click the [+] icon.

4 Select.

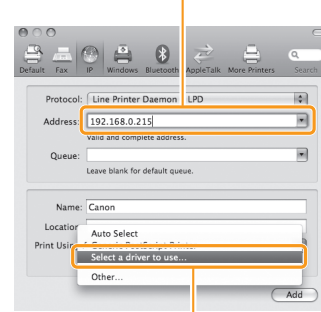
If you are using Mac OS X 10.4.x, select [IP Printer].



5 Select.

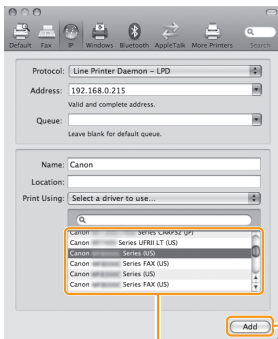
* [IPP (Internet Printing Protocol)] is not supported.

6 Enter the IP address of this machine.



7 Select.

If you are using Mac OS X 10.4.x, select [Canon] from [Print Using].

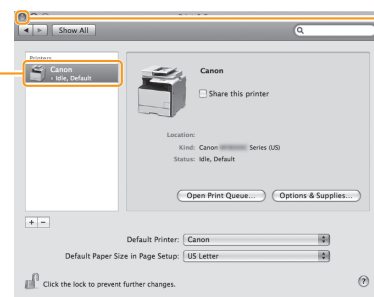


9 Click.

8 Select a driver that supports this machine.

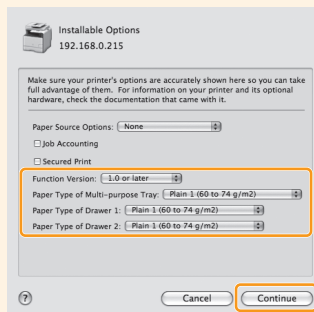
If you are using Mac OS X 10.6.x or Mac OS X 10.7.x, select the corresponding driver from the separate dialog box, and then click [OK].

10 Check that this machine is added to the [Print & Fax] or [Print & Scan] dialog box.



11 Click.

If the following screen appears, specify the optional settings, and then click [Continue] or [OK].



➤ Checking the Installation Results P. 31

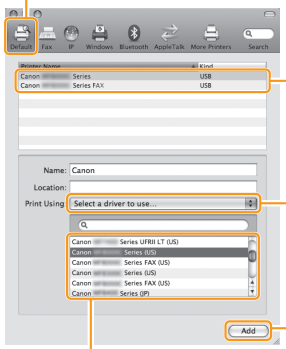
USB Connection (For Macintosh)

Register the printer and fax respectively following the procedure from 1 to 10.

- 1 Open [System Preferences].
- 2 Click [Print & Fax] or [Print & Scan].
- 3 Click the [+] icon.

If you are using Mac OS X 10.4.x, click [Print] in the [Print & Fax] dialog box to display the [Print] panel, and then click the [+] icon.

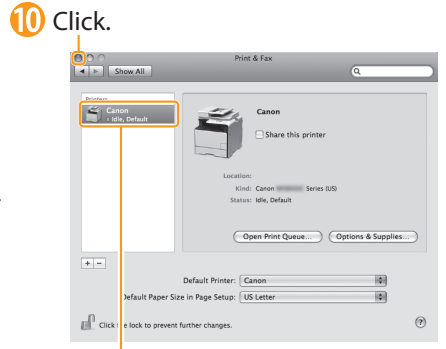
4 Select.
If you are using Mac OS X 10.4.x, select [Default Browser].



- 5 Select.
Select a printer name for which [USB] is displayed in the [Kind] or [Connection] column.
- 6 Select.
If you are using Mac OS X 10.4.x, select [Canon] from [Print Using].
- 8 Click.

7 Select.
If you are using Mac OS X 10.6.x or Mac OS X 10.7.x, select the corresponding driver from the separate dialog box, and then click [OK].

If the following screen appears, specify the optional settings, and then click [Continue] or [OK].



10 Click.
Check that this machine is added to the [Print & Fax] or [Print & Scan] dialog box.

➔ [Checking the Installation Results P. 31](#)

Checking the Installation Results (For Macintosh)

With this section, check that the scanner driver is installed correctly.

• You do not need to check the installation results of the printer driver and fax driver. You can use the drivers when the registration of this machine is complete.

- 1 The computer is connected with the scanner.
- 2 Open the Image Capture application of your Mac OS X.
- 3 When [Canon MF8300C Series] appears in the following locations, the installation of the driver was successful.
 - Mac OS X 10.4.x/10.5.x
The pull-down menu displayed by clicking [Devices] in the menu bar.
 - Mac OS X 10.6.x/10.7.x
The left list in the window

Using the e-Manual

Page configuration of the e-Manual

When you start the e-Manual, the screen below is displayed.

The screenshot shows the Canon e-Manual interface for the Color ImageCLASS MF8360Cdw/MF8080Cw. The interface includes a search bar at the top right, a 'Contents' link, and a 'Glossary' link. The main content area is divided into several sections: 'Select from functions' (Copy, Fax, Print, Scan), 'Managing and configuring the Machine' (Network Settings, Security, Setting and Managing from Computer, Setting Menu List), 'First of all' (Important Safety Instructions, Setting Up the Machine, Basic Operation, Specifications), 'Troubleshooting and Maintenance' (with a list of common issues), and 'Maintenance'. Callouts provide instructions: 'Click to refer to the contents, glossary, and how to use the e-Manual.' points to the top navigation links; 'Enter a keyword which you want to search, and then click the right button.' points to the search bar; 'Click to view precautions when using Macintosh.' points to the 'For Macintosh Users' link; 'Click a button for the function which you want to use or desired information.' points to the 'Select from functions' section; and 'Click when performing troubleshooting or maintenance of the machine.' points to the 'Troubleshooting and Maintenance' section.

For Windows

Installing the e-Manual on your computer


- 1 Insert the User Software CD-ROM in your computer.
- 2 Click [Custom Installation].
If CD-ROM Setup does not appear, see "If the top screen does not appear."
- 3 Click [Next].
- 4 Select only the [Manuals] check box.
- 5 Click [Install].
- 6 Click [Yes].
- 7 Click [Next].
- 8 When the installation finished, click [Exit].
- 9 To display the e-Manual, double-click the short cut icon [MF8300C Series e-Manual] on the desktop.

* ActiveX may block pop-ups in the background. If the e-Manual is not displayed properly, look for an information bar at the top of the page and click the information bar.

If the top screen does not appear

- Windows 2000, XP, and Server 2003
 1. From the [Start] or [start] menu, select [Run].
 2. Enter "D:\Minst.exe", and then click [OK].
 - Windows Vista, 7, and Server 2008
 1. Enter "D:\Minst.exe" in [Start Search] or [Search programs and files] under the [Start] menu.
 2. Press the [ENTER] key on the keyboard.
- * The CD-ROM drive name is indicated as "D:" in this manual. The CD-ROM drive name may differ depending on the computer you are using.

Displaying the e-Manual directly from the CD-ROM

- 1 Insert the User Software CD-ROM in your computer.
- 2 Click [Display Manuals].
- 3 Click [] for [e-Manual].

* Depending on the operating system you are using, a security protection message is displayed. Allow the contents to be displayed.

For Macintosh

Installing the e-Manual on your computer

- 1 Insert the User Software CD-ROM in your computer.
- 2 Open the [Documents] folder.
- 3 Drag and drop the [MF Guide] folder into a location where you want to save it.
- 4 When displaying the installed e-Manual, double-click [index.html] in the saved [MF Guide] folder.

Displaying the e-Manual directly from the CD-ROM

- 1 Insert the User Software CD-ROM in your computer.
- 2 Open the [Documents] → [MF Guide] folders.
- 3 Double-click [index.html].

For more details on the fax, print, and scan functions

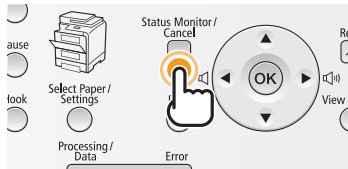
See the following Driver Guides or Help.

You can find the driver guides in the following locations on the User Software CD-ROM.

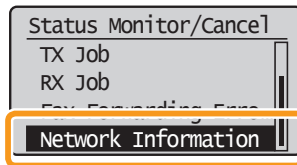
- Mac Fax Driver Installation Guide:
User Software CD-ROM → [Documents] → [FAX] → [Guide] → [index.html]
- Mac UFR II Printer Driver Installation Guide:
User Software CD-ROM → [Documents] → [Print] → [Guide] → [index.html]
- Mac Scanner Driver Guide:
User Software CD-ROM → [Documents] → [Scan] → [Guide] → [index.html]

Checking the IP Address

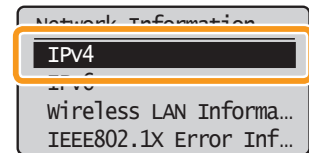
- 1 Press [] (Status Monitor/Cancel).



- 2 Press [▲] or [▼] to select, and then press [OK].



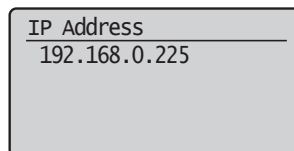
- 3 Press [▲] or [▼] to select, and then press [OK].



- 4 Press [▲] or [▼] to select, and then press [OK].



- 5 Check the IP address.



If the IP address displayed on the screen is between "169.254.1.0 and 169.254.254.255"

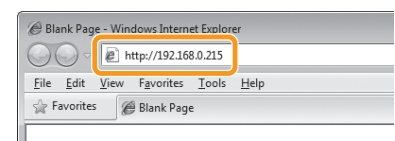
This IP address is the one assigned by the AutoIP function. If an IP address other than link-local addresses is set for the computer, set an IP address in the same subnet as the computer (other than link-local addresses) also for this machine manually. This enables the installer to search for this machine.

➔ e-Manual "Setting the IPv4 Address"

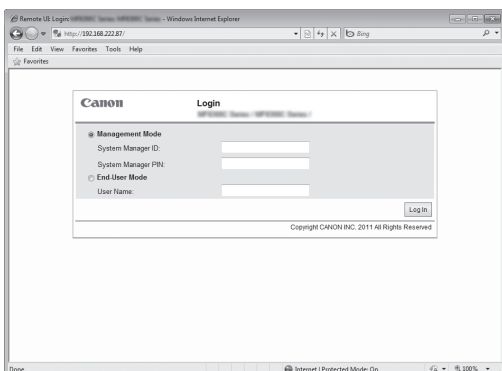
Check the network operation.

- 1 Start the web browser of a computer which is connected to a network.
- 2 Enter "http://<IP address of the machine>/" in the address field, and then press the [ENTER] key on your keyboard.

The <IP address of the machine> is the address checked in Step 5.
Input Example: <http://192.168.0.215/>



- 3 Check that the screen of the Remote UI is displayed.



When the machine is connected to a switching hub

You may not be able to connect the machine to a network even though your network settings are appropriate. Delaying the machine's network startup time may solve the problem.

➔ e-Manual "Specifying a Delay Before Establishing the Network Connection"

When the Remote UI is not displayed

Check the following.

- Whether the computer and hub are connected using a LAN cable
- Whether <Remote UI On/Off> is set to <On>

➔ e-Manual "Configuring the Remote UI"

If You Want to Uninstall the Installed Software

If you do not need the printer driver, fax driver, scanner driver, or MF Toolbox, you can uninstall them with the following procedure.

1. Confirm the following points.

- You must have administrative privileges on the computer
- You should have the installation software (in case you want to re-install the drivers)
- You have closed all applications on your computer

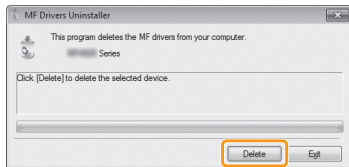
2. Delete the software.

For Windows

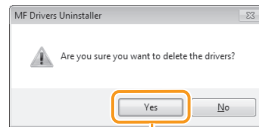
* If your machine is connected to a computer via the WSD network, you may not uninstall the drivers or software following the procedures below. Refer to "Uninstalling the Software" in the e-Manual to uninstall the MF Drivers.

For the printer/fax/scanner driver

- 1 From the [Start] menu, click [(All) Programs] → [Canon] → [MF8300C Series] → [Uninstall Drivers].



2 Click.



3 Click.



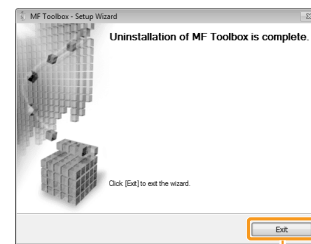
4 Click.

For the MF Toolbox

- 1 From the [Start] menu, click [(All) Programs] → [Canon] → [MF Toolbox 4.9] → [Toolbox Uninstall].



2 Click.



3 Click.

For Macintosh

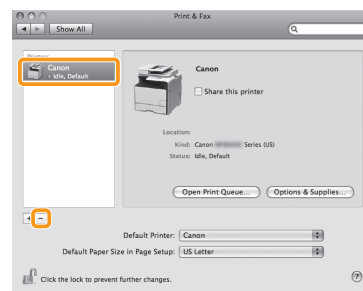
- 1 If the machine is connected to a computer with a USB cable, disconnect the USB cable.

If you want to delete the Scanner Driver or MF Toolbox, proceed to Step 4.

- 2 Open [System Preferences], and then click [Print & Fax] or [Print & Scan].



- 3 Select the machine, and then click the [-] icon. If you are using OS X 10.4.x, click [Print] to display the [Print] panel, and then click the [-] icon.



Delete all print queues set from this driver.

- 4 Start the Mac OS X Finder.
- 5 From the menu bar, click [Go] → [Go to Folder].
- 6 Delete the files or folders below from the driver you want to uninstall. Drag a file or folder to [Trash] icon on the Dock to delete.

If [Authenticate] dialog box appears, enter the administrator's name and password, and then click [OK].

Software	Location of the folder to enter	Name of the file or folder to delete
Printer Driver	/Library/Printers/Canon/	CUPSCMFP
	/Library/LaunchAgents/	jp.co.canon.CUPSCMFP.BG.plist
	<ul style="list-style-type: none"> • When using Mac OS X 10.4.x: /Library/Printers/PPDs/Contents/Resources/en.lproj/ • When using Mac OS X 10.5 or later: /Library/Printers/PPDs/Contents/Resources/ 	CNMCXXXZUS.ppd.gz (XXX may differ depending on the model.)
Fax Driver	/Library/Printers/Canon/	CUPSFAQ
	/Library/LaunchAgents/	jp.co.canon.CUPSFAQ.BG.plist
	<ul style="list-style-type: none"> • When using Mac OS X 10.4.x: /Library/Printers/PPDs/Contents/Resources/en.lproj/ • When using Mac OS X 10.5 or later: /Library/Printers/PPDs/Contents/Resources/ 	CNMCXXXFUS.ppd.gz (XXX may differ depending on the model.)
Scanner Driver / MF Toolbox	/Applications/Canon MF Utilities/	MF Toolbox
	/Library/Application Support/Canon/	ScanGear MF
	/Library/Application Support/Canon/	WMCLibrary.framework
	/Library/Application Support/Canon/	WMReg.plist
	/Library/Image Capture/Devices/*	Canon MFScanner.app*
/Library/Image Capture/TWAIN Data Sources/	Canon XXX.ds Canon XXX USB.ds (XXX may differ depending on the model.)	

* Mac OS X 10.6 or later.

- 7 Close all windows open.
- 8 Restart the computer.

Contacting the Service Center

When you have a problem with your machine and you cannot solve it even if you refer to the manuals or online help, please contact our Canon Authorized Service Facilities or the Canon Customer Care Center at 1-800-OK-CANON between the hours of 8:00 A.M. to 8:00 P.M. EST for U.S.A. and 9:00 A.M. to 8:00 P.M. EST for Canada Monday through Friday. Canadian customer support is available on-line at www.canon.ca or by calling 1-800-OK-CANON Monday through Friday from 9:00 A.M. to 8:00 P.M. EST

Disclaimers

The information in this document is subject to change without notice.

CANON INC. MAKES NO WARRANTY OF ANY KIND WITH REGARD TO THIS MATERIAL, EITHER EXPRESS OR IMPLIED, EXCEPT AS PROVIDED HEREIN, INCLUDING WITHOUT LIMITATION, THEREOF, WARRANTIES AS TO MARKETABILITY, MERCHANTABILITY, FITNESS FOR A PARTICULAR PURPOSE OF USE OR NON-INFRINGEMENT. CANON INC. SHALL NOT BE LIABLE FOR ANY DIRECT, INCIDENTAL, OR CONSEQUENTIAL DAMAGES OF ANY NATURE, OR LOSSES OR EXPENSES RESULTING FROM THE USE OF THIS MATERIAL.

Copyright

© 2011 by Canon Inc. All rights reserved.

No part of this publication may be reproduced, transmitted, transcribed, stored in a retrieval system, or translated into any language or computer language in any form or by any means, electronic, mechanical, magnetic, optical, chemical, manual, or otherwise, without the prior written permission of Canon Inc.

Trademarks

Canon, the Canon logo, and Color imageCLASS are registered trademarks of Canon Inc. in the United States and may also be trademarks or registered trademarks in other countries.

Apple, Mac OS, and Macintosh are trademarks or registered trademarks of Apple Inc. in the U.S. and/or other countries.

Microsoft, Windows and Windows Vista are either trademarks or registered trademarks of Microsoft Corporation in the United States and/or other countries.

All other product and brand names are registered trademarks, trademarks or service marks of their respective owners.



CANON INC.

30-2, Shimomaruko 3-chome, Ohta-ku, Tokyo 146-8501, Japan

CANON MARKETING JAPAN INC.

16-6, Konan 2-chome, Minato-ku, Tokyo 108-8011, Japan

CANON U.S.A., INC.

One Canon Plaza, Lake Success, NY 11042, U.S.A.

CANON EUROPA N.V.

Bovenkerkerweg, 59-61, 1185 XB Amstelveen, The Netherlands

CANON CHINA CO. LTD.

15F Jinbao Building No.89, Jinbao Street, Dongcheng District, Beijing 100005, PRC

CANON SINGAPORE PTE LTD

1 HarbourFront Avenue, #04-01 Keppel Bay Tower, Singapore 098632

CANON AUSTRALIA PTY LTD

1 Thomas Holt Drive, North Ryde, Sydney NSW 2113, Australia

CANON GLOBAL WORLDWIDE SITES

<http://www.canon.com/>

