

Canon

Digital Video Software

Macintosh

Version 15 / Version 16

Instruction Manual

E



READ CAREFULLY BEFORE USING

Canon Software License Agreement

IMPORTANT - READ THIS AGREEMENT BEFORE USING THE SOFTWARE ON THE CD-ROM IN THIS BOX. BY USING THE SOFTWARE, YOU AGREE TO BE BOUND BY THE TERMS OF THIS AGREEMENT.

This is a license agreement (the "Agreement") between you and Canon Inc. ("Canon").

IF YOU DO NOT AGREE TO THE TERMS AND CONDITIONS OF THIS AGREEMENT, DO NOT USE THE SOFTWARE PROGRAM ON THE CD-ROM (INCLUDING ALL SOUND AND IMAGE DATA) AND THE USER MANUAL IN THIS BOX (COLLECTIVELY, THE "SOFTWARE") AND PROMPTLY RETURN THE SOFTWARE TO YOUR POINT OF PURCHASE FOR A REFUND.

In consideration of the right to use the SOFTWARE, you agree to abide by the terms and conditions of this Agreement.

1. LICENSE

Canon grants you the personal, non-exclusive right to use the SOFTWARE only on a single computer. You may physically transfer the SOFTWARE from one computer to another provided that the SOFTWARE is used on only one computer at a time. You shall not install or use the SOFTWARE on a network, multiple CPU, multiple site arrangement, or any other hardware configuration where the SOFTWARE is accessible to more than one CPU or to more than one user.

With respect to the sound and image data ("Data") contained in the Software, which are to be downloaded to the applicable Canon digital camera product, Canon grants you a personal, non-exclusive license to use the Data on a single Canon digital camera product only.

YOU SHALL NOT ASSIGN, SUBLICENSE, RENT, LEASE, LOAN, CONVEY OR OTHERWISE USE, TRANSFER, COPY, TRANSLATE, CONVERT TO ANOTHER PROGRAMMING LANGUAGE, ALTER, MODIFY, DECOMPILE OR DISASSEMBLE THE SOFTWARE, IN WHOLE OR IN PART, EXCEPT AS EXPRESSLY PROVIDED IN THIS AGREEMENT.

2. BACK-UP COPY

You may make one copy of the SOFTWARE solely for back-up purposes, or copy the SOFTWARE onto the permanent storage device (e.g. a hard disk) of your computer and retain the original for back-up purposes. Any other copying of the SOFTWARE is a violation of this Agreement. You must reproduce and include the copyright notice on the back-up copy.

3. SUPPORT AND UPDATES

Neither Canon, nor its subsidiaries, dealers or distributors will be responsible for providing maintenance or support for use of the SOFTWARE. No updates, fixes or support will be made available for the SOFTWARE.

4. LIMITED WARRANTY AND LIMITATION OF LIABILITY

It is your responsibility to choose, maintain and match the hardware and software components of your computer system. Thus Canon does not guarantee uninterrupted service or correction of errors or that the functions or performance of the SOFTWARE will meet your requirements. THE SOFTWARE IS LICENSED ON AN "AS IS" BASIS AND WITHOUT WARRANTY OR CONDITION OF ANY KIND. The CD-ROM storing the SOFTWARE is warranted only against defective material under normal use for a period of ninety (90) days after purchase from an authorized Canon dealer as evidenced by your sales receipt. Your sole remedy for a defective CD-ROM shall be replacement of the same without charge when returned by you at your expense to your point of purchase and proven to be defective upon inspection. The Replacement CD-ROM will

be warranted for the remainder of the original ninety (90) day warranty period of the defective CD-ROM. The limited warranty does not apply if the failure of the CD-ROM resulted from accident, abuse or misapplication of the SOFTWARE and shall not extend to anyone other than the original user of the SOFTWARE.

EXCEPT AS SPECIFICALLY SET FORTH IN THIS PARAGRAPH 4, CANON, CANON'S SUBSIDIARIES, DISTRIBUTORS AND DEALERS DISCLAIM ALL WARRANTIES, OR CONDITIONS, EXPRESS OR IMPLIED, INCLUDING ANY WARRANTY OR CONDITION OF MERCHANTABILITY OR FITNESS FOR A PARTICULAR PURPOSE, WITH RESPECT TO THE SOFTWARE.

NEITHER CANON NOR ANY OF CANON'S SUBSIDIARIES, DISTRIBUTORS OR DEALERS IS LIABLE FOR ANY DAMAGES HOWSOEVER CAUSED, INCLUDING WITHOUT LIMITATION, DIRECT, CONSEQUENTIAL OR INCIDENTAL LOSS OR DAMAGE INCLUDING LOSS OF PROFITS, EXPENSE OR INCONVENIENCE HOWSOEVER CAUSED OR ARISING OUT OF THE SOFTWARE OR THE USE THEREOF.

NEITHER CANON, NOR ANY OF CANON'S SUBSIDIARIES, DISTRIBUTORS OR DEALERS SHALL HAVE ANY OBLIGATION TO INDEMNIFY YOU AGAINST ANY CLAIM OR SUIT BROUGHT BY A THIRD PARTY ALLEGING THAT THE SOFTWARE OR THE USE THEREOF INFRINGES ANY INTELLECTUAL PROPERTY OF SUCH THIRD PARTY.

SOME STATES, PROVINCES OR LEGAL JURISDICTIONS DO NOT ALLOW THE EXCLUSION OF IMPLIED WARRANTIES, OR THE LIMITATION OR EXCLUSION OF LIABILITY FOR INCIDENTAL OR CONSEQUENTIAL DAMAGES, OR PERSONAL INJURY OR DEATH RESULTING FROM NEGLIGENCE ON THE PART OF THE SELLER, SO THE ABOVE DISCLAIMERS AND EXCLUSIONS MAY NOT APPLY TO YOU.

5. TERM

This Agreement is effective upon your using the SOFTWARE and remains in effect until expiration of all copyright interests in the SOFTWARE unless earlier terminated. You may terminate this Agreement by destroying the SOFTWARE. This Agreement will also terminate without notice to you if you fail to comply with any of the terms of this Agreement and you must then promptly return the SOFTWARE. In addition, Canon may enforce its other legal rights.

6. U.S. GOVERNMENT RESTRICTED RIGHTS NOTICE

The SOFTWARE is a "commercial item," as that term is defined at 48 C.F.R. 2.101 (Oct 1995), consisting of "commercial computer software" and "commercial computer software documentation," as such terms are used in 48 C.F.R. 12.212 (Sept 1995). Consistent with 48 C.F.R. 12.212 and 48 C.F.R. 227.7202-1 through 227.7202-4 (June 1995), all U.S. Government End Users shall acquire the SOFTWARE with only those rights set forth herein. Manufacturer is Canon Inc./30-2, Shimomarucho 3-chome, Ohtaku, Tokyo 146-8501, Japan.

7. EXPORT RESTRICTIONS

You agree to comply with all export laws and restrictions and regulations of the country involved, and not to export or re-export, directly or indirectly, the SOFTWARE in violation of any such laws and restrictions and regulations, or without all necessary approvals.

8. SEVERABILITY

In the event that any provision of this Agreement is declared or found to be illegal by any court or tribunal of competent jurisdiction, such provision shall be null and void with respect to the jurisdiction of that court or tribunal and all the remaining provisions of this Agreement shall remain in full force and effect.

9. CONTROLLING LAW

The terms of this Agreement as it relates to purchases of the Software in the United States of America shall be governed and construed in all respects in accordance with the laws and regulations of the State of New York, without reference to choice of law

principles. The terms of this Agreement as it relates to purchases of the Software in Canada shall be governed by the laws of the province of Ontario.

10. OWNERSHIP

All rights, including but not limited to copyrights and trade secret rights, to the SOFTWARE belong to Canon, its affiliated corporations and third party licensors. Your use of the SOFTWARE is subject to the laws of the United States, and Canada, and other applicable copyright and trademark laws, and nothing in this Agreement constitutes a waiver of the rights of Canon, its affiliated corporations and third party licensors under such laws. You only own the CD-ROM media in which the Software is stored. Except as expressly provided herein, no license or right, express or implied, is hereby conveyed or granted by Canon to you for any intellectual property of Canon. Nothing contained in Paragraph 1 shall be construed to give Canon any ownership rights in any images, graphics or textual material that you save in connection with the Software.

You may not modify, remove or delete any or all copyright notices (i) which are contained in the Software, including any copy thereof, and (ii) which are on the original CD-ROM and on the medium of a back-up copy made pursuant to Section 2 above.

11. ACKNOWLEDGEMENT

BY USING THE SOFTWARE, YOU ACKNOWLEDGE THAT YOU HAVE READ THIS AGREEMENT, UNDERSTOOD IT, AND AGREE TO BE BOUND BY ITS TERMS AND CONDITIONS. YOU ALSO AGREE THAT THIS AGREEMENT IS THE COMPLETE AND EXCLUSIVE STATEMENT OF AGREEMENT BETWEEN YOU AND CANON CONCERNING THE SUBJECT MATTER HEREOF AND SUPERSEDES ALL PROPOSALS OR PRIOR AGREEMENTS, VERBAL OR WRITTEN, AND ANY OTHER COMMUNICATIONS BETWEEN THE PARTIES RELATING TO THE SUBJECT MATTER HEREOF. NO AMENDMENT TO THIS AGREEMENT SHALL BE EFFECTIVE UNLESS SIGNED BY A DULY AUTHORIZED OFFICER OF CANON.

Contents

E

READ CAREFULLY BEFORE USING	2
Canon Software License Agreement	2
Read This First	7
Checking Supplied Accessories	8
System Requirements	9
What is Digital Video Software	10
Installing the Digital Video Software	11
Connecting the Camcorder to a Computer	14
Downloading Images (ImageBrowser)	15
CameraWindow Automatic Launch Setting	15
Mac OS 10.2 - 10.3	15
Mac OS 10.1.5	17
Downloading Images to the Computer	17
Auto-downloading	17
Applying Auto-downloading Settings	18
Downloading the Selected Images	21
Using a PC Card Reader/Writer	23
ImageBrowser Windows	24
Browser Window	24
[Image Viewer] Window	28
[Crop Dialog] Window	29
[Color Adjustment Dialog] Window	29
Organizing Images	30
Classifying the Images	30
Sort by the Shooting Date	30
Sort by the Star Rating	31
Renaming Multiple Files	33
Searching for Images	34
Applying Star Rating	36
Specifying the Keywords	36
Editing Movies	38
Editing Movies	38
Playing Back Movies	40
Exporting Images	41
Changing the File Type and Save	41
Saving Still Images from Your Computer to the Memory Card	44
Adding Still Images to the Memory Card	44
Saving Sample Images to the Memory Card	45
Using Various Functions	48
Attaching Images to E-mail Messages	48
Running a Slide Show	51
Merging Panoramic Images (PhotoStitch)	52
Printing Still Images (ImageBrowser)	54
Adjusting Image Quality and Printing (Exif 2.2 Compliant)	57
Adding Sound to a Still Image	58
Applying the Camcorder Settings from the Computer	60
Customizing My Camera Settings	60
Displaying the [My Camera] Window	60

Changing the My Camera Settings	61
Adding Still Images to the [My Camera] Window	63
Applying DPOF Settings	63
Reviewing and Changing the Settings of the Camcorder	66
Uninstalling the Software	67
Uninstalling ImageBrowser and PhotoStitch	67
Troubleshooting	68

■ Disclaimer

- While every effort has been made to ensure that the information contained in this guide is accurate and complete, no liability can be accepted for any errors or omissions. Canon reserves the right to change the specifications of the hardware and software described herein at any time without prior notice.
- No part of this guide may be reproduced, transmitted, transcribed, stored in a retrieval system, or translated into any language in any form, by any means, without the prior written permission of Canon.
- Canon makes no warranties for damages resulting from corrupted or lost data due to mistaken operation or malfunction of the camcorder, the software, memory cards (MultiMediaCards or SD Memory Cards), personal computers, or peripheral devices, or due to use of a memory card not formatted by a Canon camcorder.

■ Trademark Acknowledgments

- Macintosh and Mac OS are trademarks of Apple Computer, Inc., registered in the United States and other countries.
- iPhoto and QuickTime are trademarks of Apple Computer, Inc.
- Other names and products not mentioned above may be registered trademarks or trademarks of their respective companies.

© Canon Inc. 2005 All rights reserved.

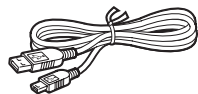
■ Safety Precautions

Do not play the supplied CD-ROM(s) in any CD player that does not support data CD-ROMs. Playing the CD-ROM(s) in an audio CD player (music player) could damage the speakers. It is also possible to suffer from hearing loss from listening with headphones to the loud sounds of a CD-ROM played on a music CD player.

Checking Supplied Accessories

Use the following accessories to download recorded images from a memory card to your computer.

- IFC-300PCU USB Cable



- DIGITAL VIDEO SOLUTION DISK



The explanations in this manual use mainly Mac OS X version 10.3 screen shots. The steps and windows may vary depending on your computer.

System Requirements

OS:	Mac OS X (version 10.1.5/10.2/10.3)
Computer Model:	Computers that come with above OS preinstalled
CPU:	PowerPC G3/G4/G5
RAM:	256 MB or more
Free Hard Disk Space:	Canon Utilities - ImageBrowser 200 MB or more - PhotoStitch 40 MB or more
Display:	1024 × 768 pixels/32,000 colors or better



- Proper operation is not guaranteed on a user-built PC.
- Proper operation is not guaranteed on any particular system, even if it meets the requirements outlined above.
- ImageBrowser and PhotoStitch do not operate on disks formatted with the Unix File System (UFS).
- A CD-ROM drive is required to install the software.

What is Digital Video Software

The following software will be installed by installing the Digital Video Software.

■ ImageBrowser

- Downloading images from a memory card to your computer (17)
- Viewing downloaded images (24)
- Categorizing, organizing, and searching large volumes of images (30)
- Editing still images (29)
- Editing movies (38)
- Changing the data for still images and save them as new files (41)
- Attaching still images to E-mail (48)
- Viewing still images in a slide show (51)
- Adding sound to an image (58)
- Printing still images with a background, frame, title and comments (54)
- Printing indexes (56)

■ CameraWindow

- Selecting a method to download images in the Camera Control window (17)
- Viewing images recorded in a memory card (21)
- Applying DPOF (Digital Print Order Format) settings (63)
- Uploading My Camera settings to the camcorder (61)



- The Remote Capture function is not supported by your camcorder.
- The slide show function of the camcorder cannot be used.

■ PhotoStitch

Merging a series of overlapping still images into a single, seamless panorama (52)

This instruction manual explains how to install the software, what you can do with the main features and how to operate them. For more detailed operational instructions, refer to the Help menu of each software program.

Installing the Digital Video Software



Before you connect the camcorder to the computer with the USB cable for the first time, you must install the Digital Video Software.

E



Mac OS X (version 10.1.5/10.2/10.3) Users:

Your digital video camcorder is equipped with the standard Picture Transfer Protocol (PTP). This protocol enables you to download images by simply connecting the camera to a computer with the USB cable (using software such as iPhoto or Image Capture preinstalled on Mac OS X).

However, please note that there are several limitations to downloading images with this method. To avoid these problems, install ImageBrowser to download images.

- It may take a few minutes, after connecting the camcorder, until you can download images.
- Only AVI* movie files can be downloaded. Thumbnails cannot be downloaded.
 - * Two files are created in the camcorder (for example: [MVI_0001.AVI] and [MVI_0001.THM]). [MVI_0001.THM] files cannot be downloaded but movies can still be played back on the computer.
- Mac OS X version 10.2
 - The Exif* version may change to 2.1 and image information may be modified when downloading images with Image Capture. To download images without any information changes, use the following procedures:
 - 1) Connect the camcorder to the computer and prepare it to transfer data.
 - 2) Start Image Capture.
 - 3) In the screen that appears, click [Options].
 - 4) Remove the checkmark from [Embed Colorsync profile] in the [Download Options] tab and click [OK].
 - * Images shot with camcorders complying with Exif Print incorporate shooting settings information, such as the shooting conditions and program AE mode, along with the image data.

1 Close any programs that are running.

2 Set the DIGITAL VIDEO SOLUTION DISK in the computer's CD-ROM drive.

3 Double click the CD-ROM icon, followed by the [Mac OS X] and [Canon Digital Video Installer] icons.

The installer panel opens.

4 Click Digital Video Software [Install].

Installer Panel



5 Select [Easy Installation] and click [Next].

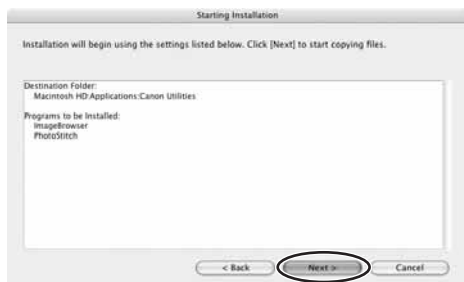
To install the software individually, select [Custom Installation].



6 Read the license agreement and click [Agree].

7 Review the installation settings and click [Next].

Installation starts.



- 8** When the “Installation has finished.” message appears, click [OK].



E

- 9** After the installation is complete, restart the computer as prompted.

Connecting the Camcorder to a Computer



- Make sure the camcorder is being powered using the power adapter before connecting it to a computer.
- Be sure to install the Digital Video Software before you connect the camcorder to the computer.
- Connect the USB cable directly to one of the computer's main USB ports. The interface may not function correctly if the camcorder is connected via a USB hub.
- The connection may not operate correctly if you are using other USB devices, excluding USB mice or keyboards, at the same time. If this occurs, disconnect the other devices from the computer and try reconnecting the camcorder.
- Do not connect two or more camcorders to the same computer via the USB interface. The connections may not operate correctly.
- **Never allow the computer to go into standby (sleep) mode while a camcorder is connected via the USB interface.**



- Refer to your computer manual for the location of the computer's USB ports.
- See your camcorder instruction manual for connecting instructions.

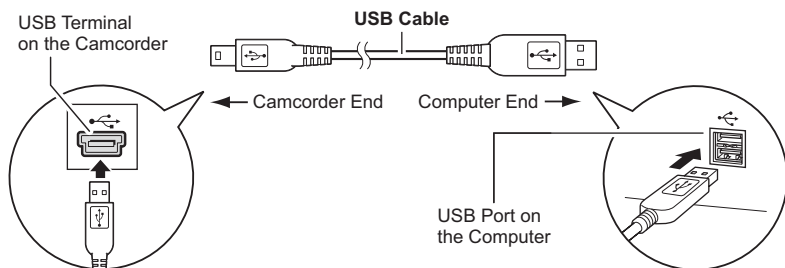
1 Insert a memory card containing images into the camcorder.

2 Connect the power adapter to the camcorder.

3 Turn the POWER switch to PLAY (VCR) and move the TAPE/CARD switch to CARD.

Wait until the card access indicator stops flashing.

4 Attach the supplied USB cable to the computer's USB port and the camcorder's USB Terminal.



Downloading Images (ImageBrowser)

Below explains the procedure for connecting a camcorder to a computer using the USB cable.

For connecting a PC card reader/writer, see *Using a PC Card Reader/Writer* (23).



- If a memory card contains an enormous volume of images (approx. 1000 or more), you may not be able to download images with ImageBrowser or an OS standard software depending on the computer you are using or the installed OS. In this case, use a PC card reader to download images.
- Observe following precautions when the camcorder's card access indicator is flashing (the camcorder is reading or writing from or to the memory card). Failure to do so may cause memory card data to become corrupted.
 - Do not open the memory card cover, remove the memory card or detach the USB cable.
 - Do not turn off the camcorder or the computer.
 - Do not change the position of the POWER switch or the TAPE/CARD switch.
- Images recorded onto the memory card or downloaded to the hard disk are important original data files. Create a copy of the file first before working on it on your computer.

CameraWindow Automatic Launch Setting

- When the first time connecting the camcorder to the computer, perform the steps below.
- To apply automatic launch settings in Mac OS 10.1.5, see *Mac OS 10.1.5* (17).

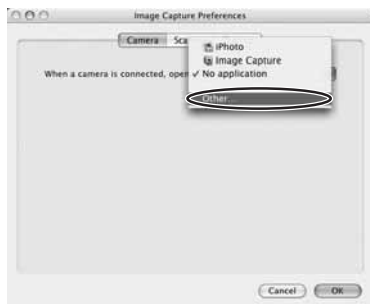
■ Mac OS 10.2 - 10.3

1 Connect the camcorder to the computer (14).

2 Start Image Capture application and select [Preferences] from the [Image Capture] menu.

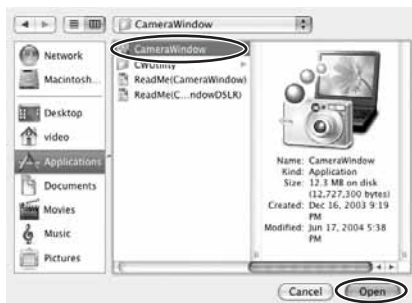


3 Select [Other] from [When a camera is connected, open].



4 Select CameraWindow and click [Open].

CameraWindow is normally installed in [Applications] ▶ [Canon Utilities] ▶ [CameraWindow].

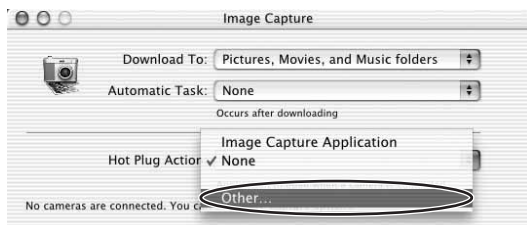


5 Click [OK].



■ Mac OS 10.1.5

- 1 Connect the camcorder to the computer (📖 14).
- 2 Start Image Capture application and select [Other] from [Hot Plug Action].



- 3 Select CameraWindow and click [Open].



- 4 Close Image Capture.

Downloading Images to the Computer

■ Auto-downloading

- 1 Connect the camcorder to the computer (📖 14).
- 2 Click [Starts to download images].
 - ImageBrowser starts.
 - To start ImageBrowser manually, double click the folder in which you installed the program, followed by the [Canon Utilities] and [ImageBrowser] folders and the [ImageBrowser] file, or double click the ImageBrowser icon on the Desktop.

- To quit the Camera Control window, click [Quit].



■ Applying Auto-downloading Settings

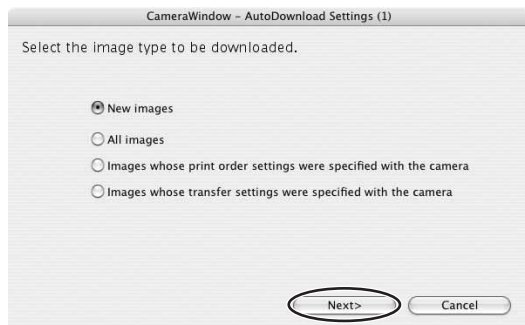
This task allows you to apply auto-downloading settings. You can specify the types of images and the destination folder.

- 1 In the Camera Control window, click the [Acquire Images] tab and click [Preferences].**



2 Select the image type to be downloaded and click [Next].

When the protect switch of the SD Memory Card is activated during image transfer, the images will not be marked as “already transferred” even having selected [New images] and downloaded.



3 Specify the destination folder settings and click [Next].

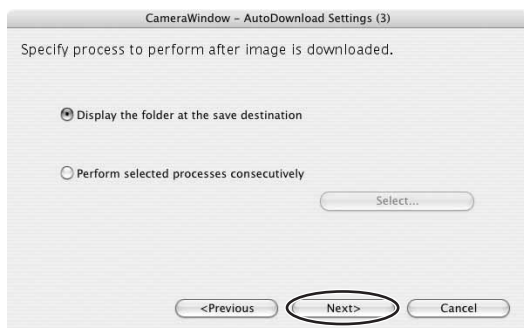
Destination Folder

Click this button to browse where you want to save the images.

Select to specify the configuration of the subfolder.



4 Specify a process to perform after the image is downloaded and click [Next].



Below window will be displayed when you select [Perform selected processes consecutively] (You can redisplay the window by clicking [Select]). Select a process to perform after the image is downloaded, and click [OK].



5 Click [Finish].

- ImageBrowser starts.
- To start ImageBrowser manually, double click the folder in which you installed the program, followed by the [Canon Utilities] and [ImageBrowser] folders and the [ImageBrowser] file, or double click the ImageBrowser icon on the Desktop.
- Placing a check mark next to [Images are automatically downloaded to computer while camera is connected] downloads memory card images automatically to the computer when you connect the camcorder.



■ Downloading the Selected Images

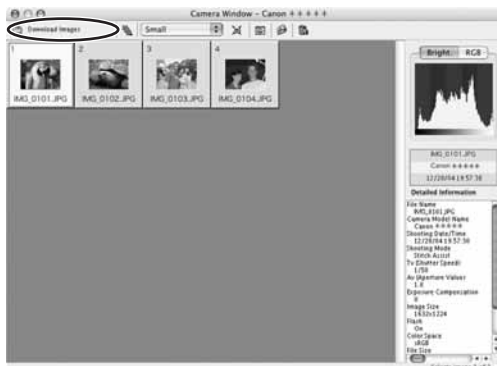
1 Connect the camcorder to the computer (14).

2 Click [Lets you select and download images].
CameraWindow appears.



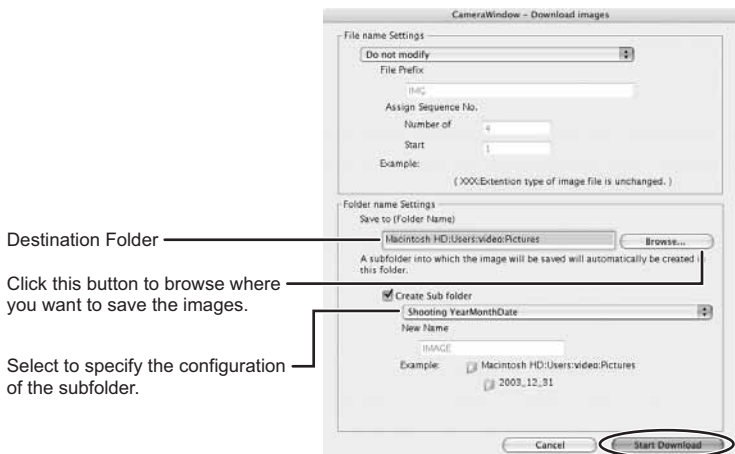
3 Select images you wish to download and click [Download Images].

- A yellow frame appears around the selected image.
- Clicking on 2 images while holding down the [Option] + [Shift] key selects also all images between the 2 images.
- Clicking on different images while holding down the [Shift] key selects multiple images.



4 Confirm the settings and click [Start Download].

ImageBrowser starts, and Browser Window appears.



1 Insert a memory card into the reader.

2 Select a method to download the images.

- [Starts to download images]: CameraWindow appears, and the images in the memory card are downloaded. To apply auto-downloading settings, refer to *Applying Auto-downloading Settings* (□ 18).
- [Lets you select and download images]: CameraWindow appears, and the images in the memory card are shown as thumbnails.



ImageBrowser Windows

This section explains the windows of ImageBrowser.

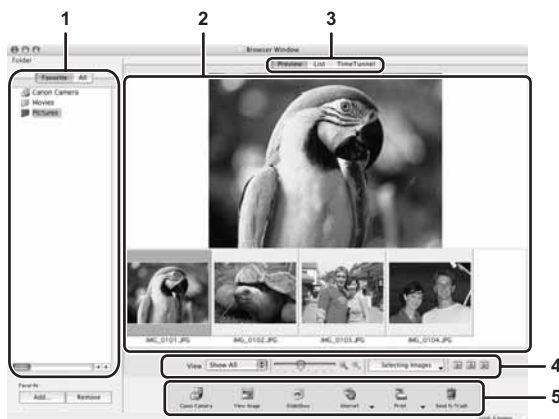


To start ImageBrowser, double-click the  icon located on the desktop.

If the ImageBrowser icon is not on the desktop, double-click the [CanonUtilities] folder on the drive on which the program was installed, followed by the [ImageBrowser] folder and the [ImageBrowser] icon.

Browser Window

This is the ImageBrowser's Main Window. You can view and manage the downloaded images.



1 Explorer View

Displays the disks and folders that you can use on your computer. If you click the disclosure triangle on the left edge of the display, you can switch between collapsing and expanding the contents of that folder.

Selecting the [Favorite] tab shows only the folders that are registered as Favorites. To register a folder as Favorites, follow the instructions below.

When you have selected the [All] tab:

Select a folder and click [Add to Favorites].

When you have selected the [Favorite] tab:

Click [Add] and specify a folder.

To remove the registered folder, select the folder, and click [Remove].

2 Browser Area

This area displays the images contained in the selected folder.

3 View Mode

You can select a view mode of images in the Browser Area.

[Preview]: A large image is displayed. Selecting [View Settings] ► [Information display panel] from the [View] menu shows the detailed information. You can change file name and comments. Selecting a different image at the bottom of the Browser Area switches the displayed image.



[List]: The images are displayed as thumbnails. The thumbnails can be enlarged/reduced by selecting [Enlarge] or [Reduce] from the [View] menu.

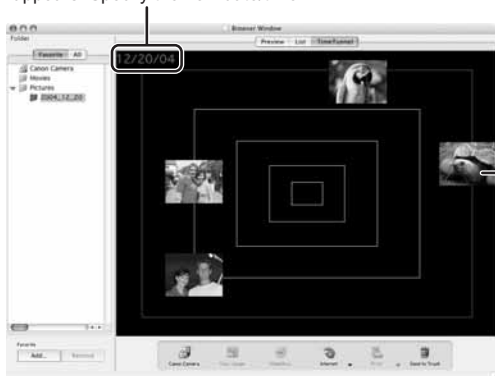


[TimeTunnel]: The images are displayed in the chronological order.

The date/time at which the images were shot appears on the red line. You can change this date/time by double-clicking it on the display. A window similar to the one below appears. Specify the new date/time.



Move the slider up or down to move backward or forward in time.



Makes the TimeTunnel rings octagonal.

Double-click a thumbnail to display it in another window.

Changes the number of TimeTunnel rings.



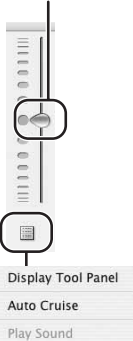
Allows you to specify the date for the images displayed.

Makes the TimeTunnel look curved.

Click to display the control panel.

[Display Tool Panel]: Select to display or hide the tool panel.

[Auto Cruise]: Enables or disables [Auto Cruise]. When [Auto Cruise] is active, the time movement continues even after you have moved and released the bar.



4 Browser Area Tool Bar

The tool bar does not appear in the [TimeTunnel] mode.



E

1	View	Allows you to select displayed images according to the star rating.
2	Enlarge/Reduce	Enlarges/reduces the thumbnails in the Browser Window.
3	Selecting Images	Allows to select all images and deselects images.
4	Display Pattern	Allows to change the appearances of the Browser Window.

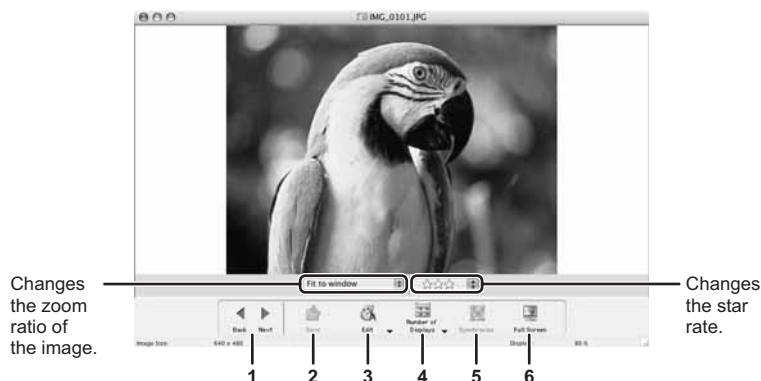
5 Application Tool Bar



1	Canon Camera	Opens CameraWindow.
2	View Image	Displays a selected image in the [Image Viewer] window.
3	SlideShow	Displays still images in a slide show.
4	Internet	Allows attaching the selected still images to E-mail messages.
5	Print	Prints the selected still images.
6	Send to Trash	Deletes the selected images.


[Image Viewer] Window

The [Image Viewer] window appears when you select an image and click [View Image] or double click an image.




1	Back/Next	Displays the previous/next image in the current folder.
2	Save	Allows saving the edited image.
3	Edit	Allows adjusting colors and crop the image or registering other image. Unable to use when the multiple images are selected.
4	Number of Displays	Allows you to display multiple images at the same time.
5	Synchronize	Synchronizes View functions across all displayed images.
6	Full Screen	Displays an image in full screen size. To return to Browser Window, click the full screen sized image or press any key.

■ [Crop Dialog] Window

Select [Edit still image] ► [Crop] from the [Edit] menu, or selecting [Crop] from the  icon. Either drag the mouse on the image or specify the cropping area, and click [Crop].



■ [Color Adjustment Dialog] Window

Selecting [Edit still image] ► [Adjust Color] from the [Edit] menu or selecting [Adjust Color] from the  icon, [Color Adjustment Dialog] allows you to change the brightness, saturation, contrast, and RGB of the image.



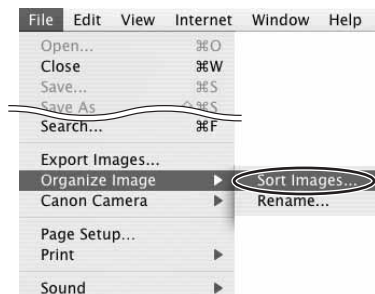
Organizing Images

Classifying the Images

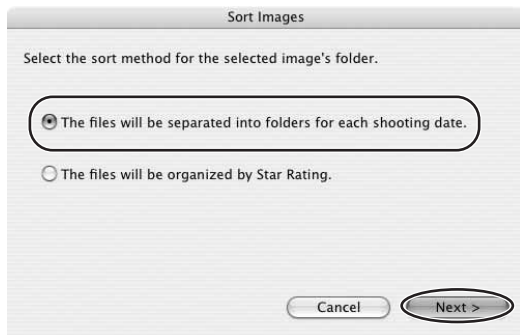
This task allows you to sort images into a folder according to the shooting date or Star Rating.

■ Sort by the Shooting Date

- 1 Select the images you wish to classify and select [Organize Image] ▶ [Sort Images] from the [File] menu.



- 2 Select [The files will be separated into folders for each shooting date.] and click [Next].



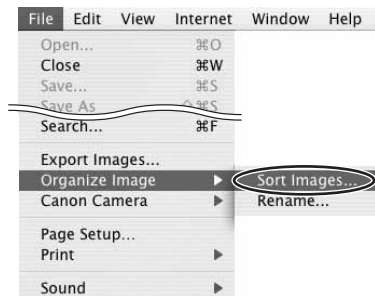
3 Specify the sort settings and click [OK].

The selected images are classified into the specific folder.

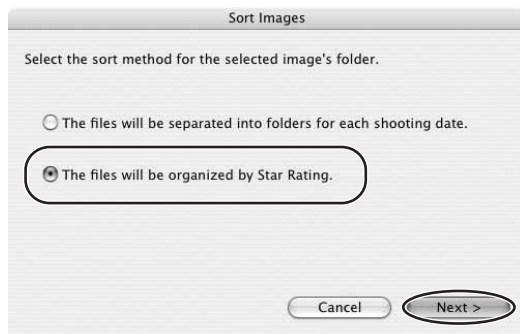


■ Sort by the Star Rating

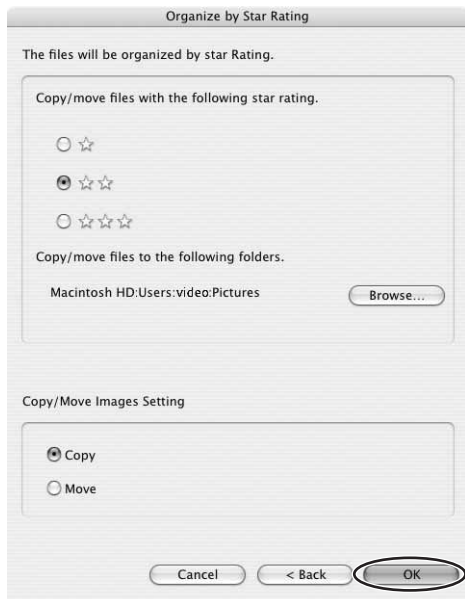
1 Select the images you wish to classify and select [Organize Image] ▶ [Sort Images] from the [File] menu.



2 Select [The files will be organized by Star Rating.] and click [Next].



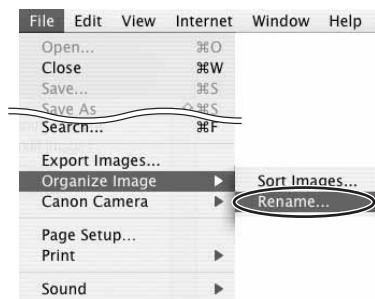
3 Specify the sort settings and click [OK].



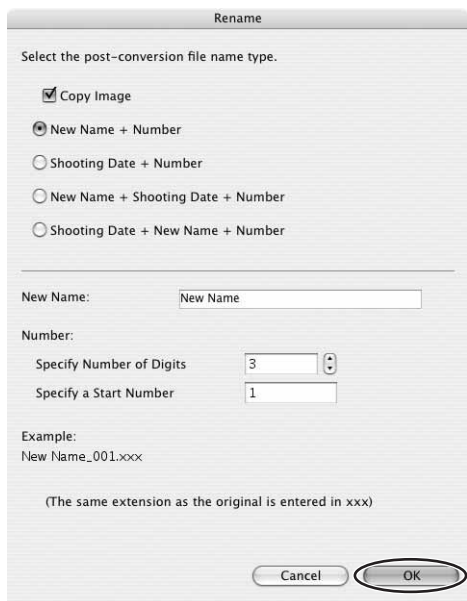
Renaming Multiple Files

This task allows you to rename multiple files at the same time, or to rename and copy multiple files.

- 1 Select the images you wish to rename and select [Organize Image] ► [Rename] from the [File] menu.**



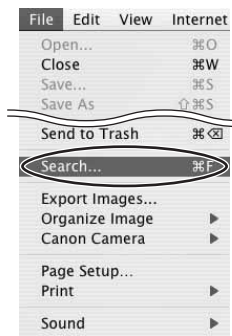
- 2 Specify the settings and click [OK].**
The images are renamed according to the settings specified.



Searching for Images

This task allows you to search for images by Star Rating, Modification Date, Shooting Date, Comment or Keywords.

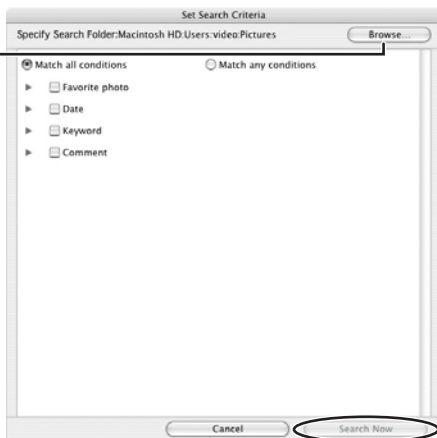
- 1 Select a folder in the explorer view.**
- 2 Select [Search] from the [File] menu.**



- 3 Specify the search conditions and click [Search Now].**

- The search results are displayed as thumbnails.
- Select at least one search condition.
- Clicking the ► icon discloses the parameters of settings.

Clicking this button allows you to specify a folder.



4 Click [Finish].

- To change the search parameters and perform another search, click [Back] and repeat steps 3-4.



- The images of the search result are displayed in the [Search Results] folder. You can print or copy these images to another folder. The images will remain in this folder until ImageBrowser is closed or another search is performed.



E

Macintosh

Applying Star Rating

- This task allows you to apply ratings to your images from one star to three stars. The Star Rating can be used as one of the search conditions, or for the selection of images to be displayed in the Browser Window.
- The default setting of the Star Rating is two stars.

1 Select the image to which you wish to apply the Star Rating.

2 Select [Change Star Rating] from the [Edit] menu.



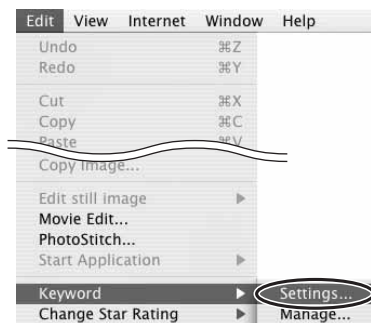
You can display images according to Star Rating by selecting from the [View] drop down list.

Specifying the Keywords

Keyword is used for searching images.

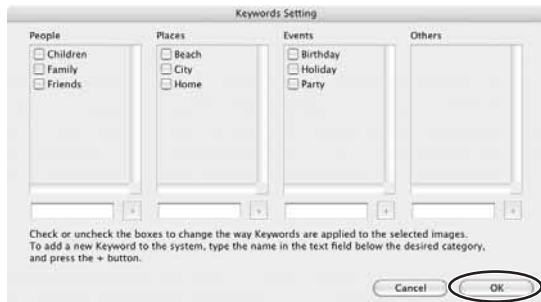
1 Select an image you wish to apply the keyword.

2 Select [Keyword] ▶ [Settings] from the [Edit] menu.



3 Place a check mark next to the keyword you wish to apply and click [OK].

You can add and delete keywords, or change the keyword list in the [Manage Keywords] window by selecting [Keyword] ► [Manage] from the [Edit] menu.



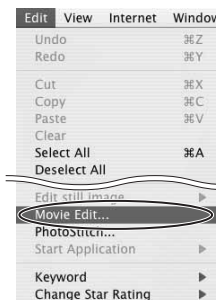
E

Editing Movies

You can link images, insert text and background music, and add effects.

Editing Movies

- 1 Select images in the Browser area.
- 2 From the [Edit] menu, select [Movie Edit].



- 3 Arrange images and click [2.Effect].
 - To change the order of images, select an image and click [Move Left] or [Move Right].
 - Operational instructions are displayed in the upper section of the window.

Plays back the movie being edited.



Storyboard Area
Displays thumbnails of the selected images. The images will be linked from left to right.

Transition Box
Displays the symbol of the transition effect between linked images.

4 Apply effects to the images and click [3.Audio].

To set a transition effect, you need to select a transition box in the Storyboard Area.



E

5 Set the audio and click [4.Save].

You can add an MP3, AIFF or WAV file as audio.




6 Select a file type and click [Save].

- Select the destination folder, input the file name and click [Save].
- To exit MovieEdit Task, from the [MovieEdit Task] menu, select [Quit MovieEdit Task].



Macintosh

Playing Back Movies

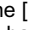
In the CameraWindow and Browser Area, movies are displayed with the first scene as a still image with a  (movie) icon.

1 In the Browser Area, double-click a thumbnail with a (movie) icon.

The [Image Viewer] window appears.



2 Click the (Play) icon in the [Image Viewer] window.

- The movie will be played back.
- Clicking the  (Play) icon at the bottom of the image in the Main Window also plays back the movie.



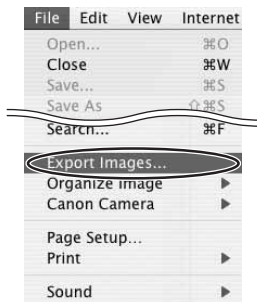
Exporting Images

E

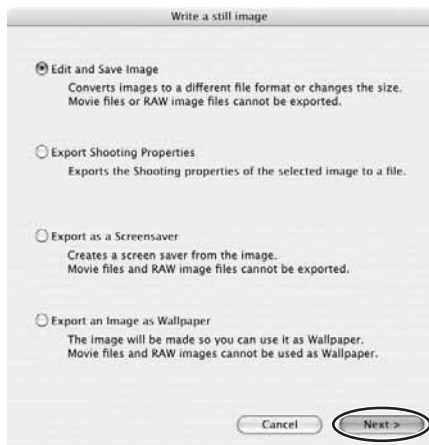
Changing the File Type and Save

This task allows you to change the size, resolution or data for of selected still images and save them as new files and allows to save the shooting properties of the still images and movies to text files or copy them with new names.

- 1** Select an image you wish to export and [Export Images] from the [File] menu.



- 2** Select exporting type and click [Next].



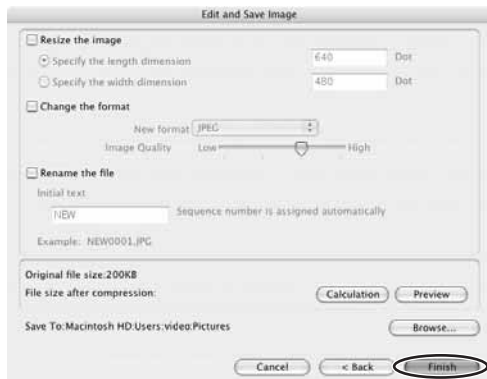
Macintosh

3 Specify the export settings and click [Finish].

The window varies depending on the selected export type in step 2.

When you have selected [Edit and Save Image]:

You can convert still images to another file type, resize and save them as new files. You can select the file type from BMP, PICT, JPEG and TIFF. You can also specify a prefix to be added to the exported still images.



When you have selected [Export Shooting Properties]:

You can select information you wish to export and save as a text file.



When you have selected [Export as a Screensaver]:

You can export and save the image as a screen saver.



E

When you have selected [Export an Image as Wallpaper]:

You can export and save the image as a desktop wallpaper. This task cannot be performed if you have selected multiple images.



Saving Still Images from Your Computer to the Memory Card

You can save still images from the computer to a memory card. You can also save sample images for card mix from the DIGITAL VIDEO SOLUTION DISK.



- Only still images with JPEG compression can be saved to the memory card. TIFF, PICT, Windows bitmap will be converted to JPEG compression and saved to the memory card.
- You can also save still images to a memory card by using drag and drop to move it from the browser area to CameraWindow.

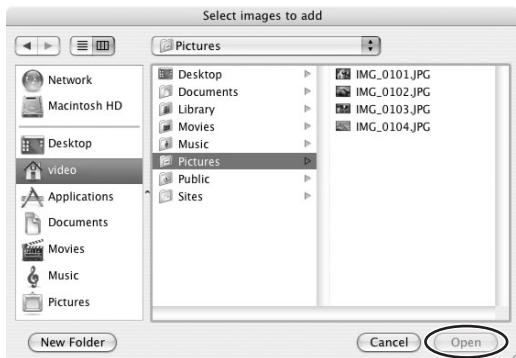
■ Adding Still Images to the Memory Card

- 1** Connect the camcorder to the computer (14).
- 2** Click the [Set to Camera] tab in the Camera Control window, and [Uploads images to the camera].



3 Select the still image you wish to add and click [Open].

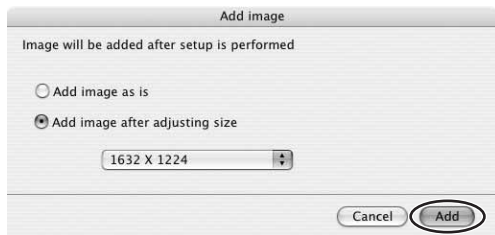
You can check the selected image by clicking the file name.



E

4 In the Add image window, select the image size and click [Add].

- The selected images will be recorded to the memory card.
- When recording is complete, the images will appear in the CameraWindow.



■ Saving Sample Images to the Memory Card

You can save sample images for card mix to the memory card. CARD CHROMA, CARD ANIMATION, CARD LUMINANCE and CAMERA CHROMA are provided on the DIGITAL VIDEO SOLUTION DISK.

1 Insert the DIGITAL VIDEO SOLUTION DISK to the computer's CD-ROM drive.

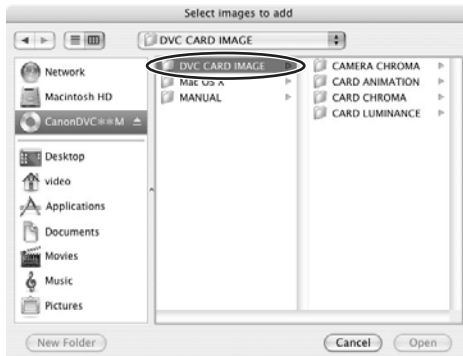
2 Connect the camcorder to the computer (14).

- 3** Click the [Set to Camera] tab in the Camera Control window, and [Uploads images to the camera].

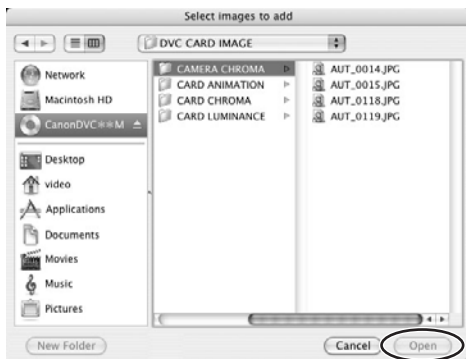


- 4** Double-click the CD-ROM icon, followed by the [DVC CARD IMAGE] folder.

The folders [CAMERA CHROMA], [CARD ANIMATION], [CARD CHROMA] and [CARD LUMINANCE] appear.



- 5** Open the [CAMERA CHROMA], [CARD ANIMATION], [CARD CHROMA] or [CARD LUMINANCE] folder, select the image you wish to copy to the camcorder and click [Open].



- 6** In the Add image window, click [Add].
- The selected images will be recorded to the memory card.
 - When recording is complete, the images will appear in the CameraWindow.

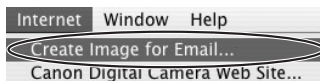


Using Various Functions

Attaching Images to E-mail Messages

You can attach selected images to an E-mail message.

- 1** Select the images you wish to send in the Browser Area.
- 2** From the [Internet] menu, select [Create Image for Email].

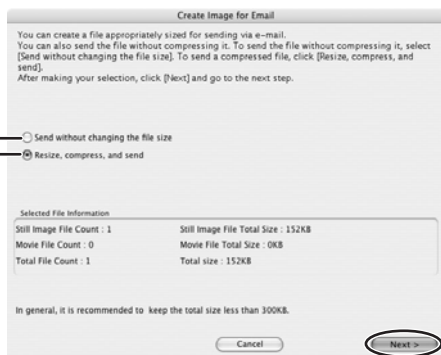


- 3** Specify the image size and click [Next].

When you select [Send without changing the file size], move on to step 5.

Select this if you do not wish to reduce the size of the still image.

Normally, select this option.



4 Specify the reduction ratio and image quality and click [Next].

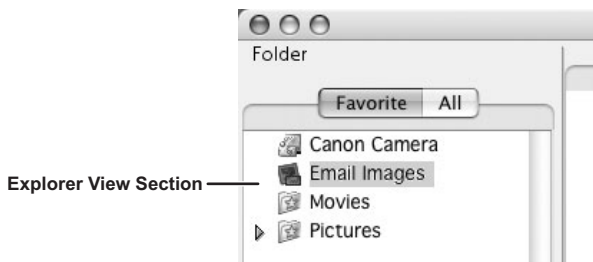
- [Resize(%)]: Select the reduction ratio relative to the original size of the image.
- [Quality]: Select the image quality. The lower the quality, the rougher the image becomes, but the size of the file also becomes smaller.
- [Compress]: Use it to check the file size when you actually compress the image. The file size appears next to “Total Size After Compression”.

E



5 Select whether you wish to start your e-mail software and click [Finish].

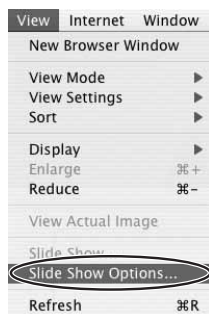
- If you have selected [Start email application after closing], your e-mail software starts automatically. Open a new e-mail message and attach the image. With some types of e-mail software, you can attach images to e-mail messages simply by dragging them from the Browser Area to the new message window.
- Click [Preview] to check the changed image.
- The image will be saved to the [Email Images] folder in the explorer view section.



- You can set the e-mail software to start automatically in step 5. Note that some e-mail software may not start automatically. For details, please refer to the Help menu of the OS you are using.
- The images in the [Email Images] folder are saved in the following location: Open the [Users] folder, followed by [User login name], [Library], [Preferences], [ImageBrowserUserData], and [Mail].

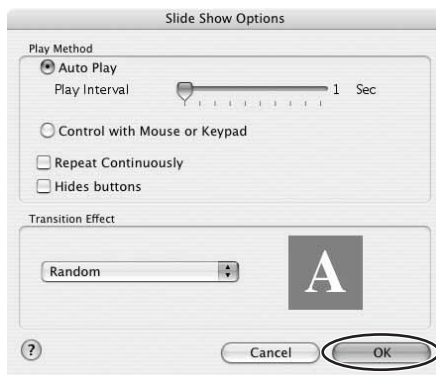
Running a Slide Show

1 From the [View] menu, select [Slide Show Options].



2 Select the slide show settings and click [OK].

- [Auto Play]: Moves to the next still image automatically. Select the interval by sliding the control under [Play Interval] (from 1 to 30 seconds).
- [Control with Mouse or Keypad]: Advances the slide show manually with the mouse or keyboard.
- [Repeat Continuously]: Runs the slide show in a loop.
- [Hides buttons]: Hides the buttons during the slide show.
- [Transition Effect]: Select the transition effect to be used when moving from one slide to another. When you select an effect, you can check the effect in the preview window.



3 Select the images and select [Slide Show] from the [View] menu.

Click  on the lower right of the screen to end the slide show.

E

Macintosh

Merging Panoramic Images (PhotoStitch)

You can merge a series of overlapping images into a single, seamless panorama. PhotoStitch automatically arranges still images recorded with the camcorder's Stitch Assist mode in their correct order and orientation, making it easy to merge them. Please refer to the Camcorder Instruction Manual to learn how to record in Stitch Assist mode.

The following instruction explains how to merge still images recorded in Stitch Assist mode with the camcorder.



Still images recorded in Stitch Assist mode with Wide-converter or Tele-converter attached cannot be merged correctly.

1 Select images shot in Stitch Assist mode.

To use PhotoStitch, images need to be shot in Stitch Assist mode. To download images, please refer to *Downloading Images (ImageBrowser)* (□ 15).



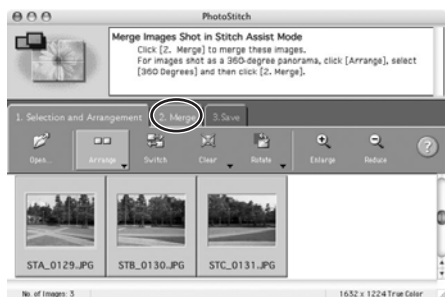
2 Select [PhotoStitch] from the [Edit] menu.

The [PhotoStitch] window opens.



3 Arrange the order of the images and click [2.Merge].

Operational instructions are displayed in the upper section of the window.



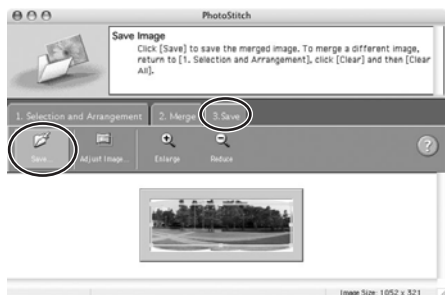
E

4 Click [Start].



5 Select [3.Save] and then click [Save].

- Select the destination folder, input the file name and click [Save].
- In the View the Saved Image? window, click [Yes]. The Viewer window opens and displays the merged image.
- To exit PhotoStitch, from the [PhotoStitch] menu, select [Quit PhotoStitch].



Macintosh



- You can record the surroundings in 360 degrees, and stitch them together later to form a 360-degrees cylinder. (In [1. Selection and Arrangement], select [Arrange] and [360 Degrees].) By saving this stitched image in QuickTime VR type, you can then get a virtual view of the surroundings by manipulating the mouse.
- For more details, please refer to the PhotoStitch Help menu.

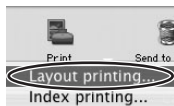
Printing Still Images (ImageBrowser)

You can select the layout when printing still images. Movies cannot be printed.



Do not open the memory card cover, remove the memory card, detach the USB cable or turn off the camcorder while data is being transferred to the printer (when the camcorder's card access indicator is flashing). Doing so may cause memory card data to become corrupted.

- 1 Select the still image(s) you wish to print in the Browser Window.**
- 2 Click [Print] and select [Layout printing] from the displayed menu.**



- The Layout Options window and Print window appear.
- If the Layout Options window does not appear, display it by clicking [LAYOUT OPTIONS] in the Print window.

Edit the Page Title

Open the [Edit] menu and select [Edit Header].

Change the Image Size

Drag the border to resize the still image.

Change the Layout

Drag the still image to change the layout.

Add Captions to Still Images

Click the still image and then the [Edit] menu and select [Edit Caption].

Add Text

Open the [Edit] menu and select [Add Text].

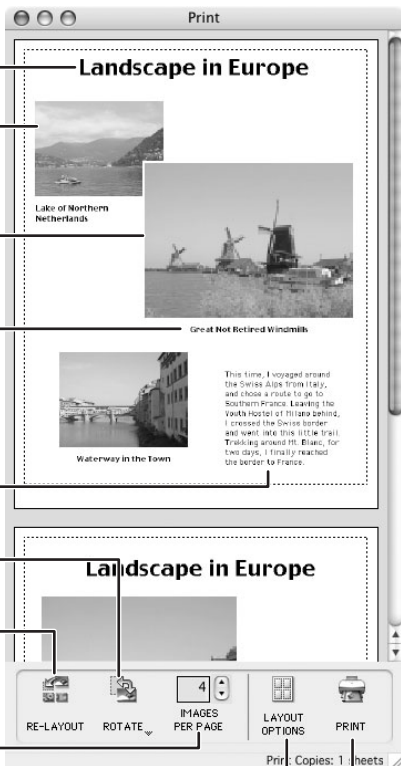
Click this to rotate the selected still image.

Click this to reset the layout.

Change the default number of still images printed per page.

Click this to select a layout type.

Click this to display the Print dialog.

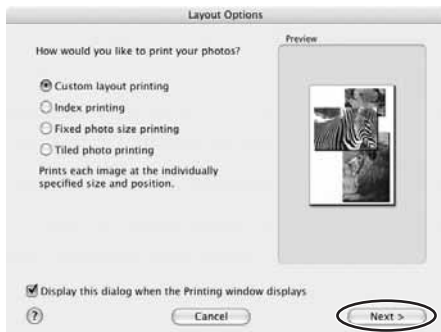


E

Macintosh

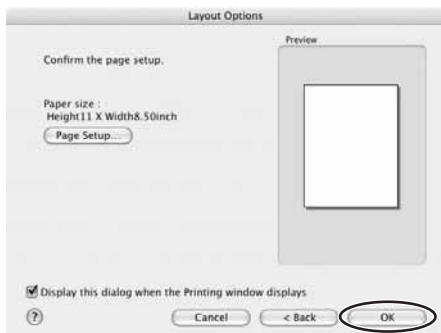
3 In the Layout Options window, select a layout and click [Next].

The Custom Layout printing option allows you to freely change the size and position of the still images for printing. The other options allow you to print an index.



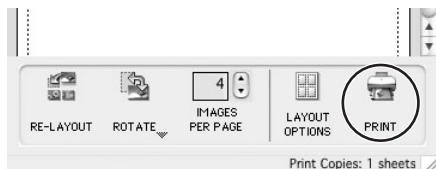
4 Select a paper size and click [OK].

- The Print window opens, allowing you to change the layout and printing settings.
- The settings available will vary according to the type of layout selected in step 3.



5 Click [PRINT] in the Print window.

The Print dialog appears.



6 Click [Print].

Printing starts.

■ Adjusting Image Quality and Printing (Exif 2.2 Compliant)

ImageBrowser allows you to print images with image quality adjustments. ImageBrowser also supports the Exif 2.2 standard (or Exif Print).



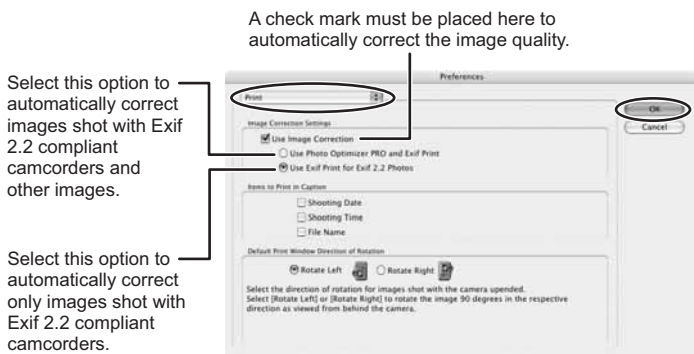
- Still images shot with camcorders complying with the Exif 2.2 standard incorporate shooting settings information, such as the shooting conditions and scene mode, along with the image data. The Exif Print adjustment protocol uses this information to correct the image quality more accurately to reflect the shooting settings.
- When printing from ImageBrowser, the image quality adjustment settings are active for all still images.

1 Click the [ImageBrowser] menu in ImageBrowser and select [Preferences].



2 In the [Preferences] window, select [Print], set the image quality settings and click [OK].

See *Printing Still Images (ImageBrowser)* for the next steps (54).



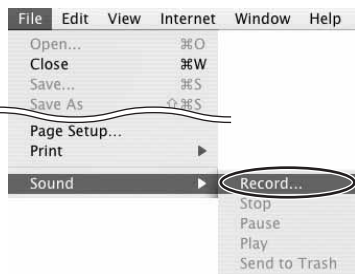
Adding Sound to a Still Image

To add sound to still images, use the MAC OS recording function. Depending on the computer, you may need to connect peripherals such as microphones. Check if your computer settings allow recording.

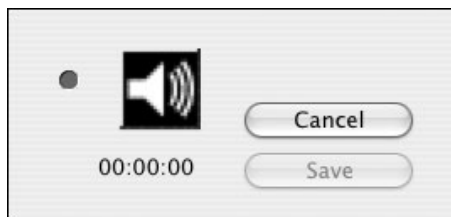
The sound cannot be played back on the camcorder.

1 In the Browser Area, select a still image and select [Sound] ▶ [Record] from the [File] menu.


The recording window appears.




- 2** Click  and start recording when the [Save] button is enabled.



- 3** Click [Save] to stop recording.

-  appears on the still image.
- The sound file will be copied in AIFF format (extension “.AIF”) to the same folder as the still image.



- To remove sound from a still image, select [Sound] ▶ [Send to Trash] from the [File] menu.  disappears and the copied sound file will be deleted.
- To play back the sound, select an image with a sound icon and select [Sound] ▶ [Play] from the [File] menu. While playing back the sound, select [Sound] ▶ [Pause] or [Stop] to control the status.

Applying the Camcorder Settings from the Computer

Customizing My Camera Settings

- The start-up image, start-up sound, operation sound, self-timer sound and shutter sound are called the My Camera Settings. ImageBrowser already contains several My Camera Settings which can be selected in theme sets or individually. The “Animal” theme, for example features and animal in the start-up image and animal calls in each of the sound files. The files all begin with the same word (e.g. “Animal”, “Baseball”).
- You can use the pre-recorded My Camera Settings (📖 61) or add still images to the My Camera Settings (📖 63).
- When you start the [My Camera] window from the Camera Control window, you can only change the My Camera Settings of the camcorder.



Observe following precautions while the My Camera Settings are saved to the camcorder.

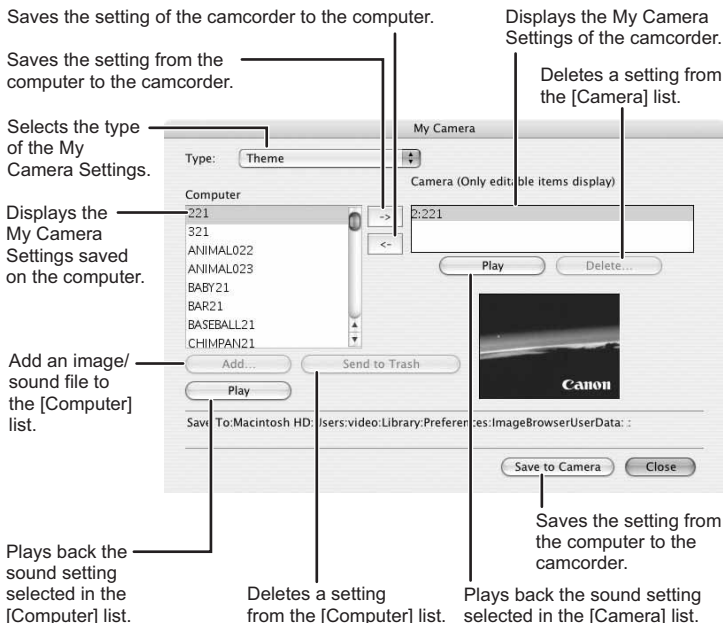
- Do not open the memory card cover or remove the memory card.
- Do not detach the USB cable.
- Do not turn off the camcorder or computer.
- Do not change the position of the POWER switch or TAPE/CARD switch.

■ Displaying the [My Camera] Window

- 1** Connect the camcorder to the computer (📖 14).
- 2** Click the [Set to Camera] tab in the Camera Control window, and [Set My Camera].



The [My Camera] window appears.

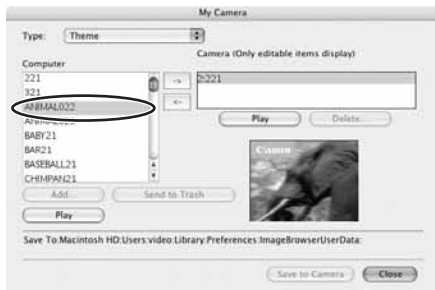


E

■ Changing the My Camera Settings

1 In the [My Camera] window, select the theme set you wish to save to the camcorder in the [Computer] list.

- To change the settings individually, select the setting type in the [Type] list.
- A window appears when you select a theme set and plays back the start-up, operation, self-timer and shutter sound.



Macintosh

- 2** Select the setting you wish to replace in the [Camera] list and click  .



- 3** On the confirmation window, click [OK].
The selected setting replaces the old setting and appears in the [Camera] list.

- 4** Click [Save to Camera].



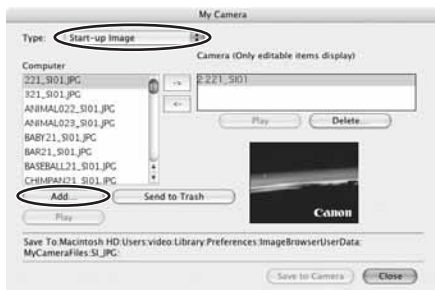
- 5** On the confirmation window, click [OK].
If you wish to use this setting on the camcorder, change the My Camera Setting on the camcorder itself. Refer to the Camcorder Instruction Manual for details.

■ Adding Still Images to the [My Camera] Window

By adding an image to the [Computer] list, you can upload the image to the camcorder for use as Start-up Image. Only still images with JPEG compression can be added to the list.

1 In the [My Camera] window, select [Start-up Image] in the [Type] list and click [Add].

The [Select an image to add] window appears.



2 Select the still image file (JPEG) you wish to save and click [Open].

The selected file appears in the [Computer] list. You can now save the newly added file to the camcorder using the procedures described in *Changing the My Camera Settings* (61).



To delete a setting, select the file and click the [Send to Trash] button below the [Computer] list.

Applying DPOF Settings

You can select images and the number of prints for automatic printing on a DPOF (Digital Print Order Format)-compliant printer. You can set the DPOF print settings also on the camcorder.



When you are using a SD memory card, make sure the protect switch is set to allow recording.

1 Click the [Set to Camera] tab and click [Set Slide Show/DPOF] in the Camera Control window

- When connecting a PC card reader/writer, click the [Set to Memory Card] tab and click [Set Slide Show/DPOF].
- The slide show function of the camcorder cannot be used.



2 Click [Print Order(DPOF)] and select a print type from the drop-down list.

- [Standard Print]: Prints selected images in the specified number of copies. Use the arrows next to the boxes to select the number of copies.
- [Index Print], [Both (Standard/Index)] and the option [Titles] of the [Edit] menu (printing of date and file number) are not supported by the camcorder.



- 3** Select the still images you wish to print and the number of copies.



- 4** Click **[Save to Camera]**.
The DPOF print settings will be saved to the memory card.



The Edit Slide/DPOF window allows print settings on up to 998 still images. With some camcorders, DPOF print settings are limited to a maximum of 200 still images. In that case, all DPOF print settings on the 201st still image and onward will be erased.

Reviewing and Changing the Settings of the Camcorder

You can adjust the date, time and owner settings of the camcorder. You can also check the remaining memory card capacity or format the memory card.

- 1 Click the **[Set to Camera]** tab and click **[Confirms/changes camera settings]** in the **Camera Control** window.



- 2 Change the settings of the camcorder and click **[OK]**.

Input a camcorder owner name here (up to 31 characters).

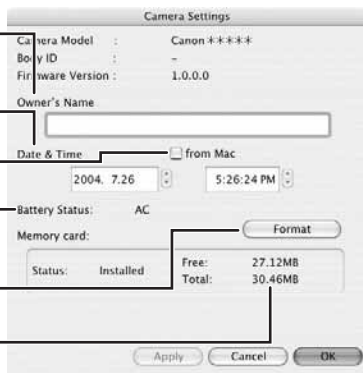
Set the date and time here.

Check this box to synchronize the camcorder to the computer's date and time settings.

Check the power status here.

Click this to format the memory card in the camcorder.

Check the remaining memory card capacity here.



Uninstalling the Software

Uninstall the software when you wish to delete it from your computer or when reinstallation is required to fix corrupted files.

E

Uninstalling ImageBrowser and PhotoStitch

Move the program's folder into the Trash to uninstall programs such as ImageBrowser and PhotoStitch.



- If the program folders contain subfolders into which images have been saved, be careful not to accidentally delete those subfolders.
- For more details on how to uninstall ImageBrowser, refer to Read Me.

Connection

- ? Camcorder is not recognized when connected to the computer.**
 - ➔ **There is no memory card in the camcorder.**
Insert a memory card into the camcorder.
 - ➔ **The camcorder is not set to the correct mode.**
Turn the POWER switch to PLAY (VCR) and move the TAPE/CARD switch to CARD.
 - ➔ **Camcorder is not correctly connected to the computer.**
Read *Connecting the Camcorder to a Computer* (□ 14) and check the connection.
Ensure that you are using the correct cable and that its connectors are in good shape.
 - ➔ **If you are experiencing operational problems, detach the USB cable from the camcorder and computer and terminate the connection. Restart the computer and then reconnect the camcorder.**

ImageBrowser Operation

- ? Cannot download images**
 - ➔ **The camcorder is not set to the correct mode.**
Turn the POWER switch to PLAY (VCR) and move the TAPE/CARD switch to CARD.
- ? Image files or folders do not appear in ImageBrowser.**
 - ➔ **Images of folders shown in ImageBrowser and the actual file contents may be different.**
Click the [View] menu and select [Refresh].



CANON INC.

U.S.A. ————— Canon U.S.A., Inc.

Canon Customer Care Center
Tel (US): 1-800-828-4040
(Mon.-Fri., 9 AM to 8 PM Eastern Time)

CANADA ————— Canon CANADA Inc.

Tel (Canada): 1-800-OK-CANON (1-800-652-2666)

ASIA ————— Canon Hongkong Co., Ltd.

19/F., The Metropolis Tower, 10 Metropolis Drive,
Hung Hom, Kowloon, Hong Kong
Phone: 852-2170-2828
Fax: 852-2723-9684