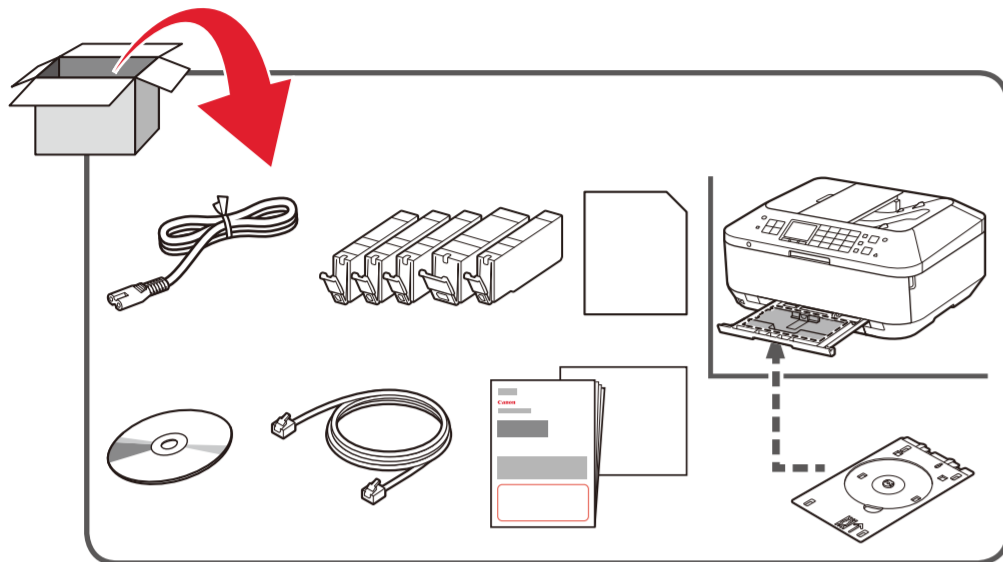
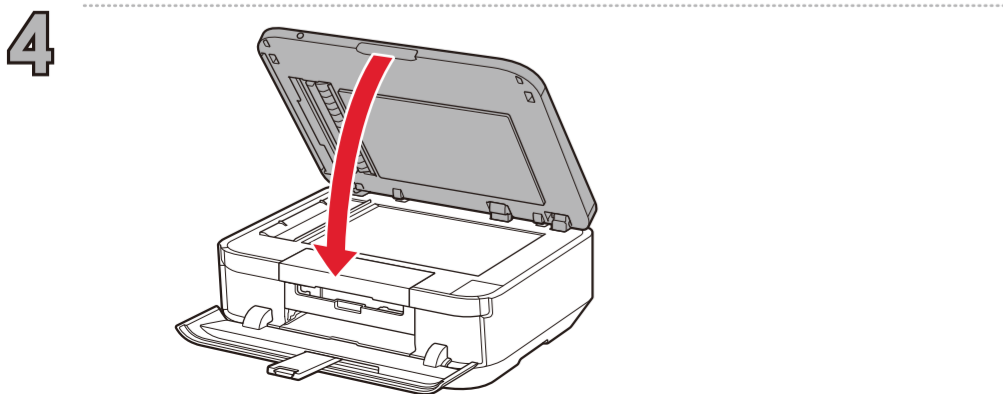
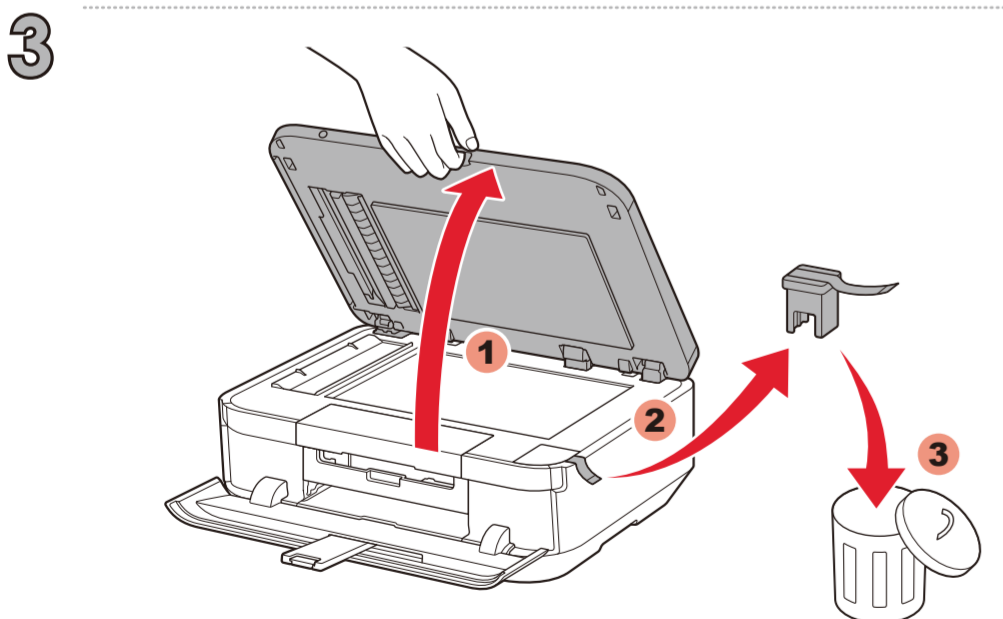
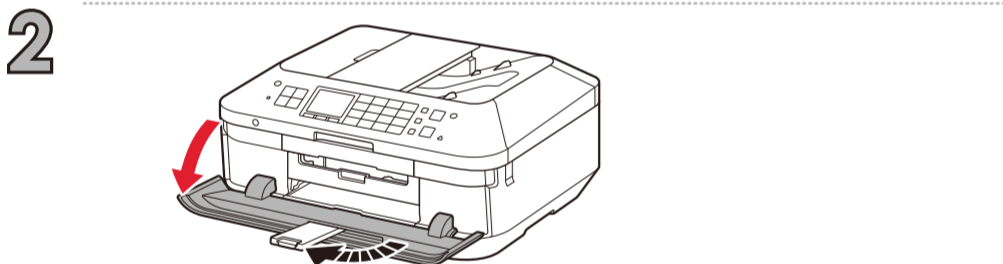
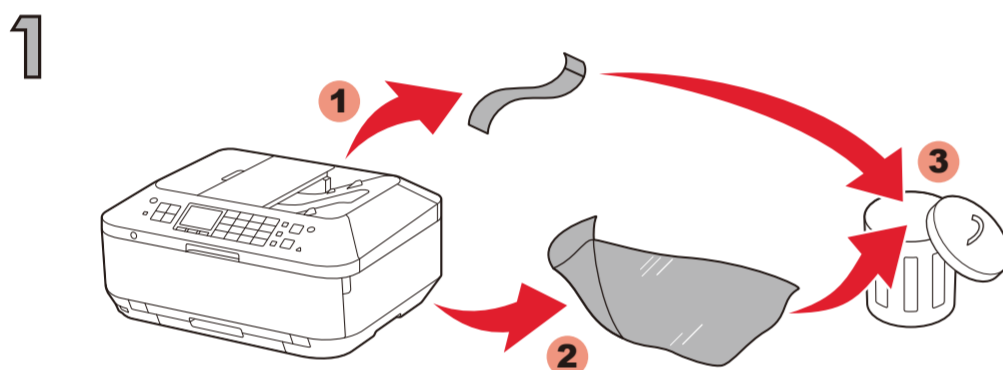


Canon PIXMA MX925 series

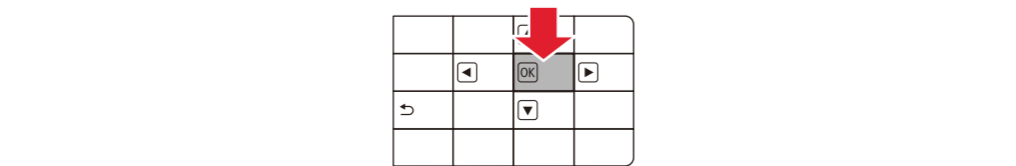
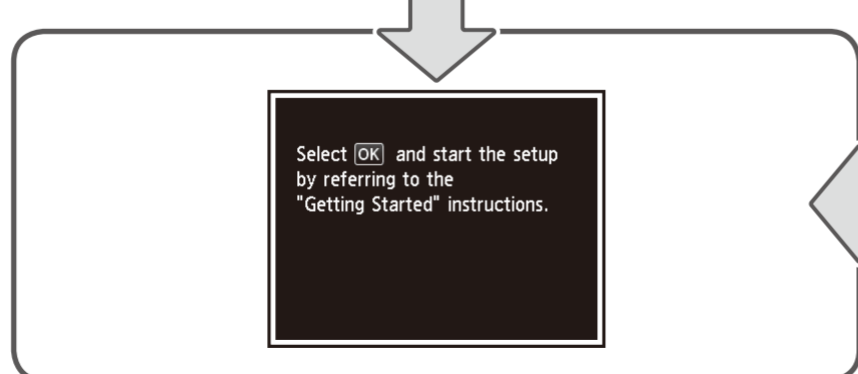
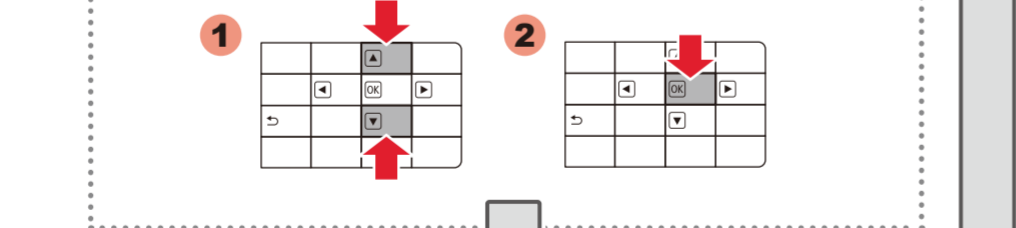
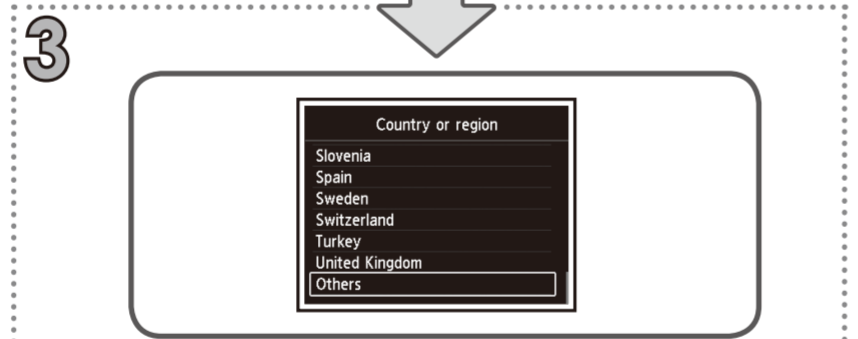
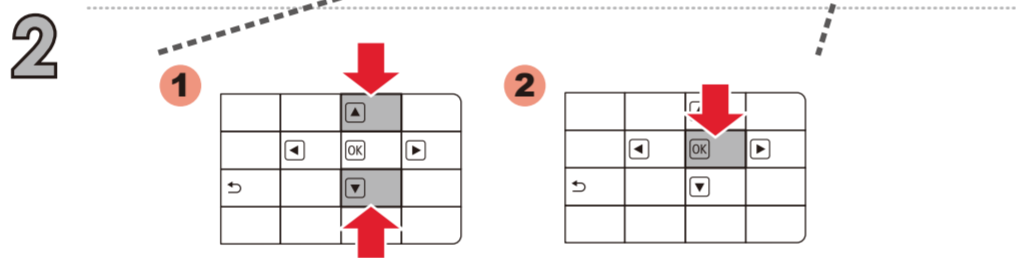
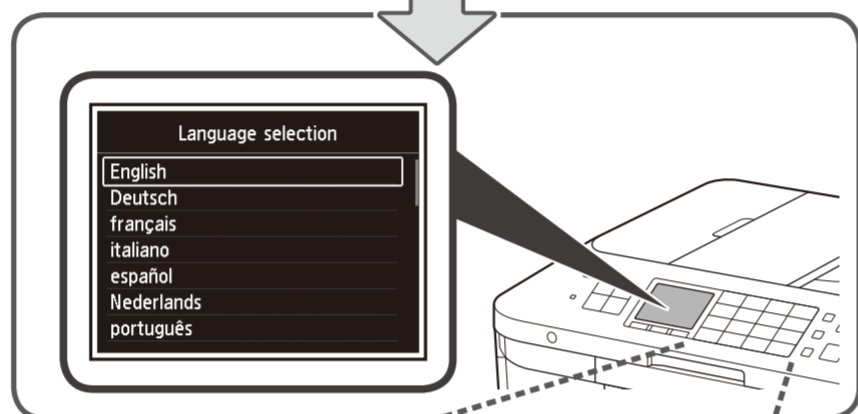
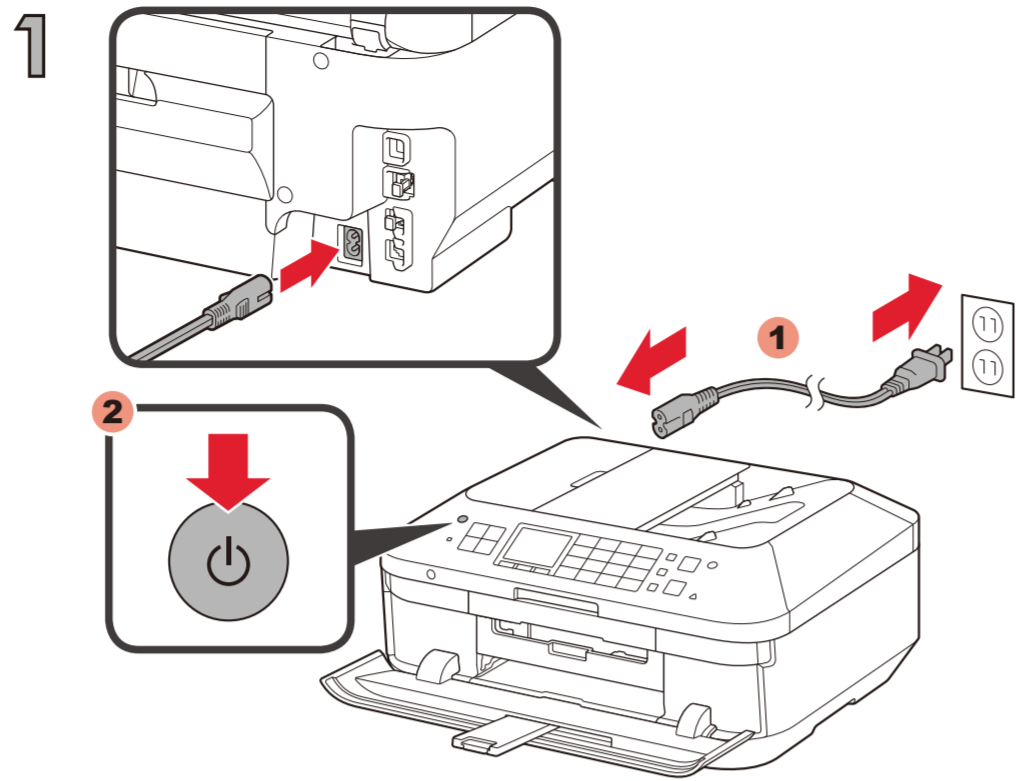
1



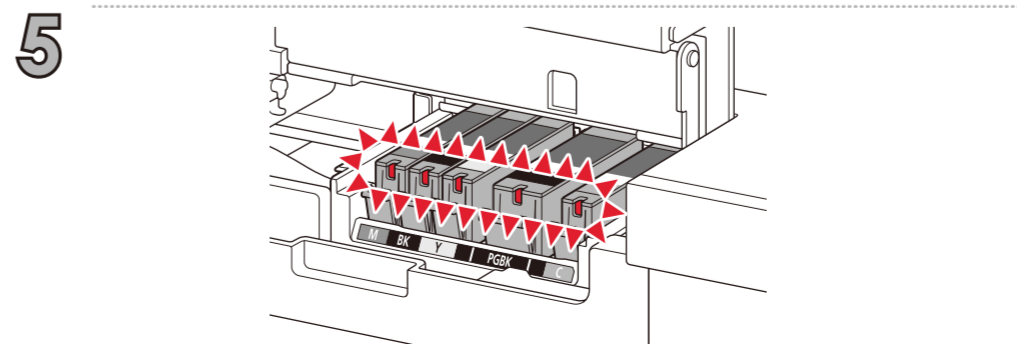
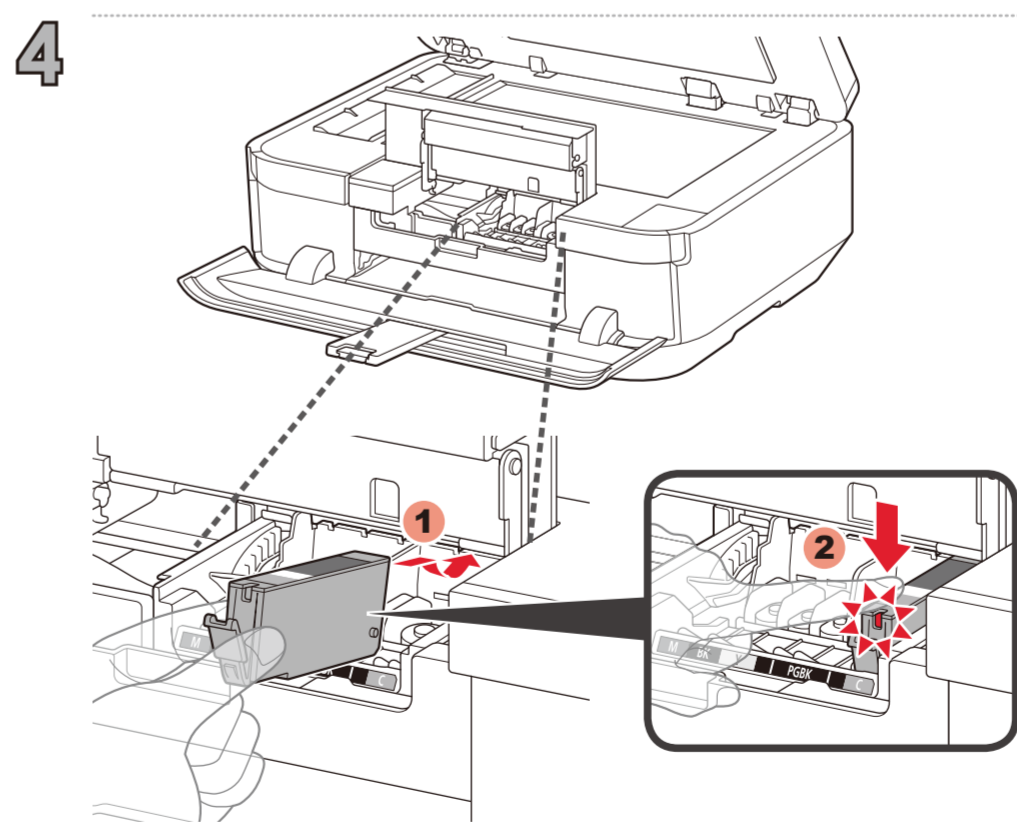
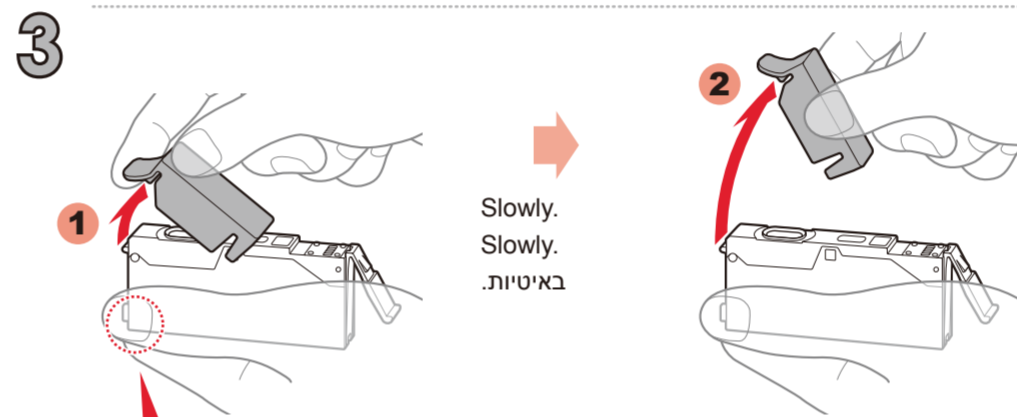
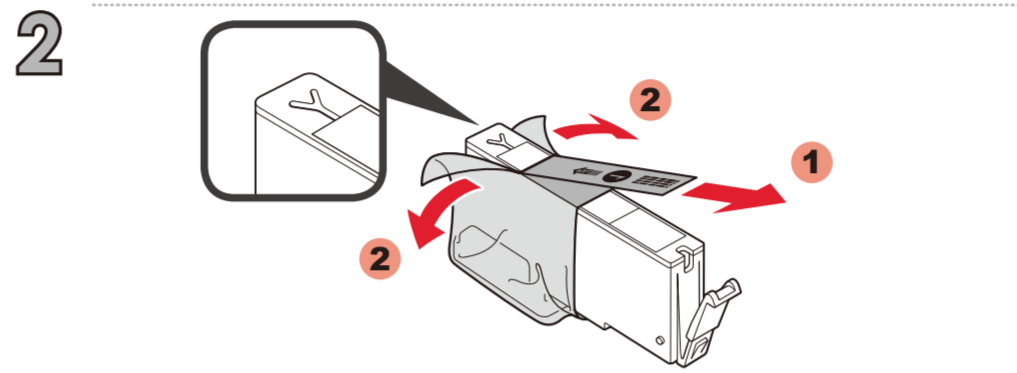
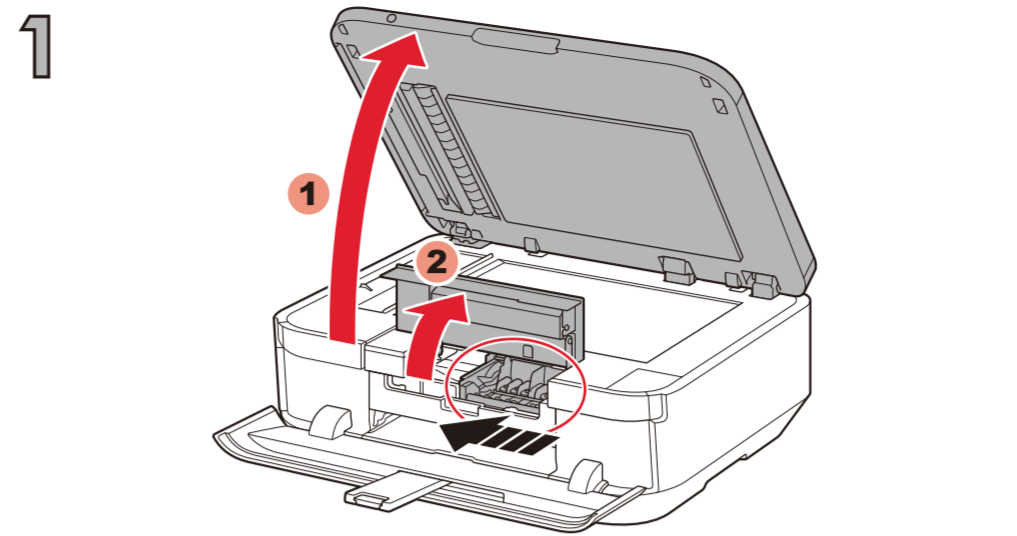
2



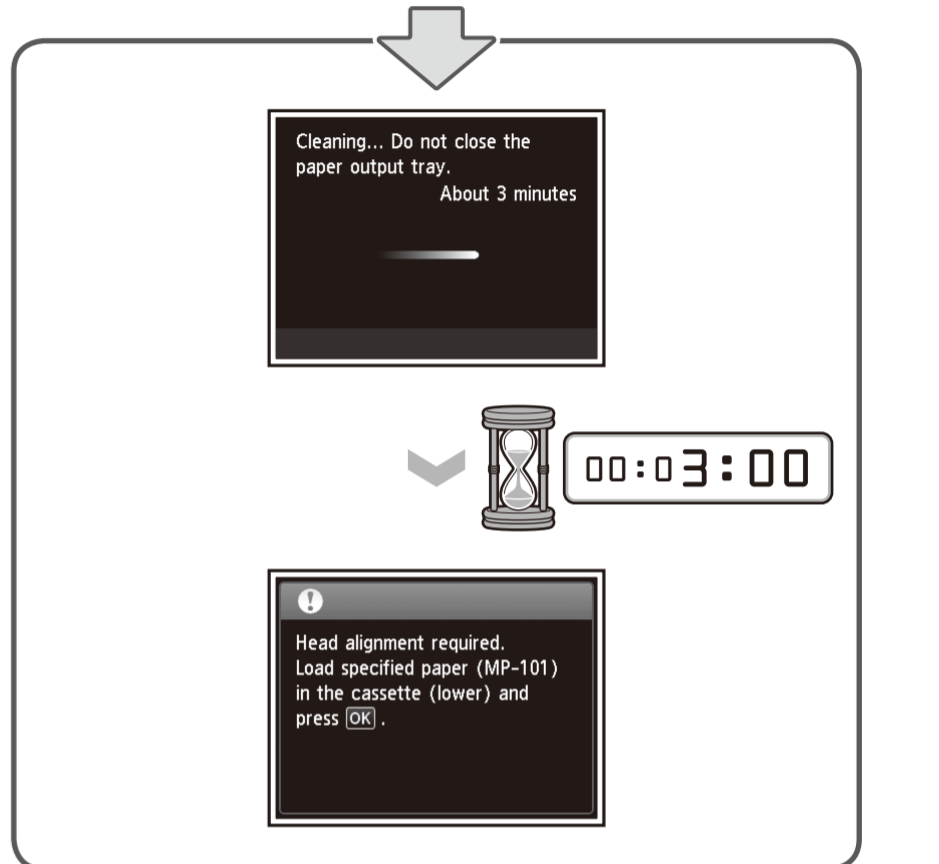
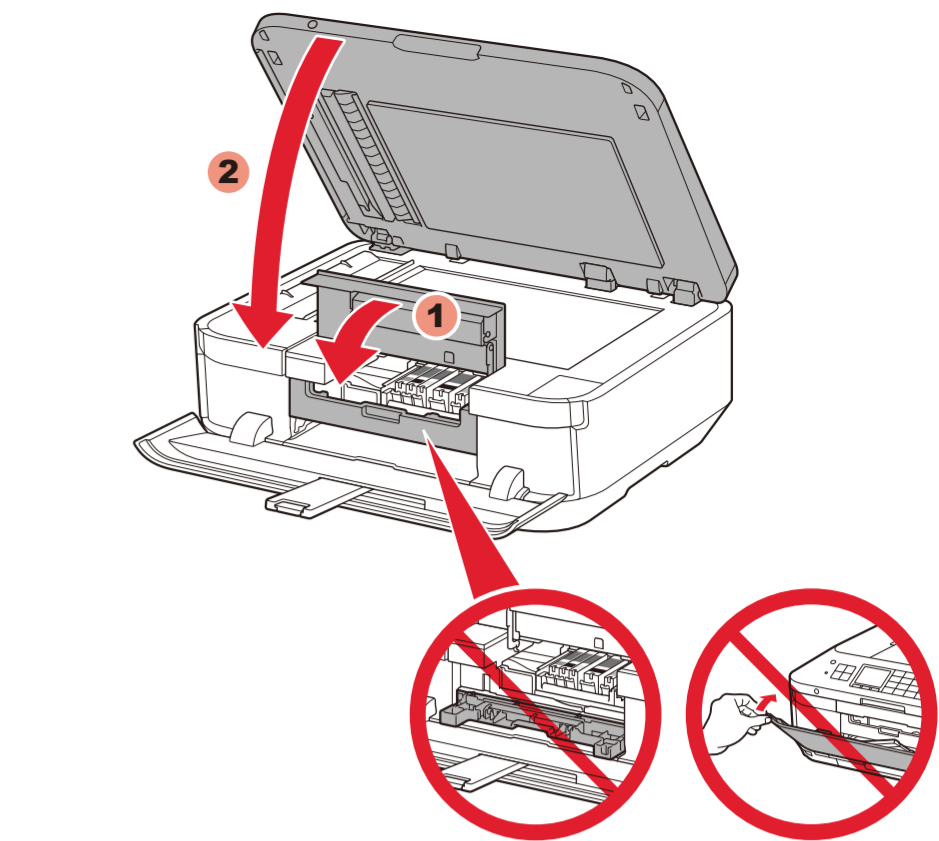
3



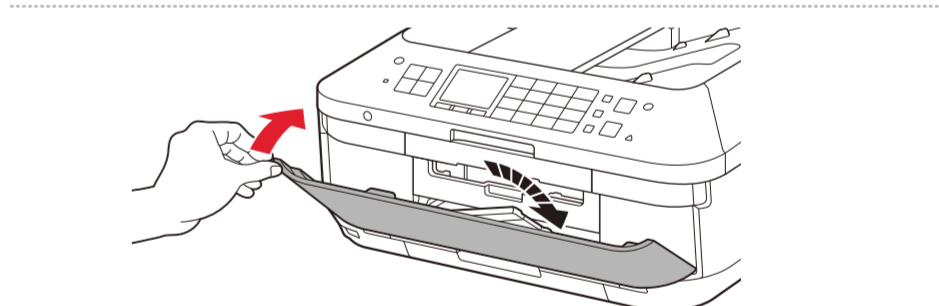
4



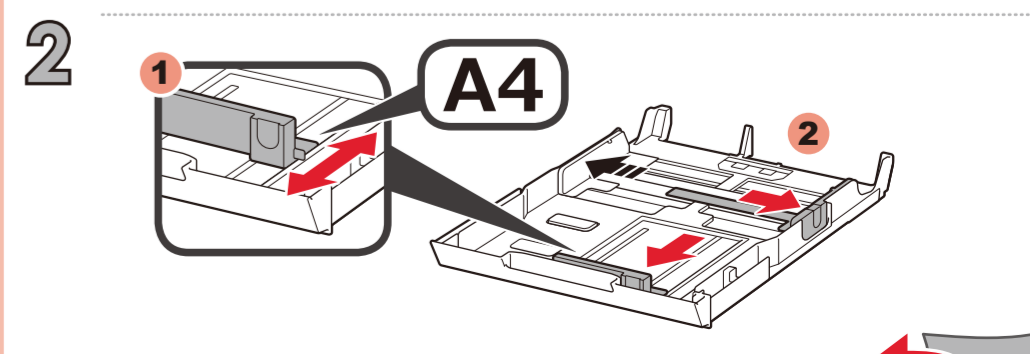
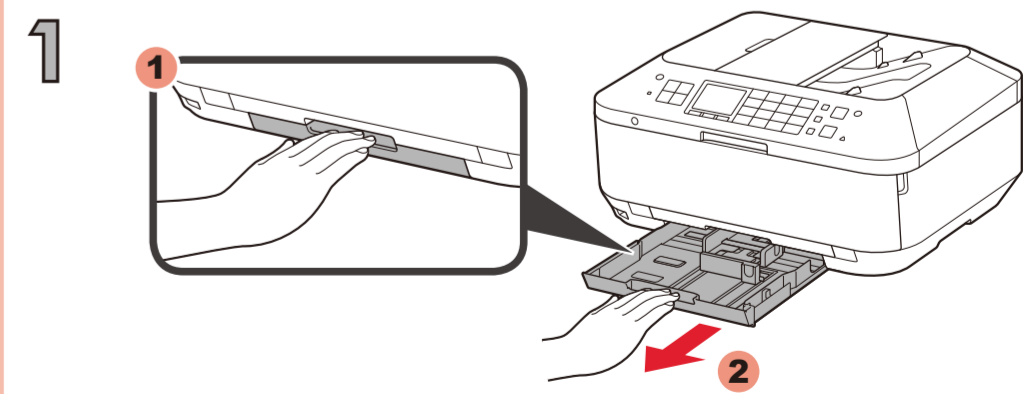
6

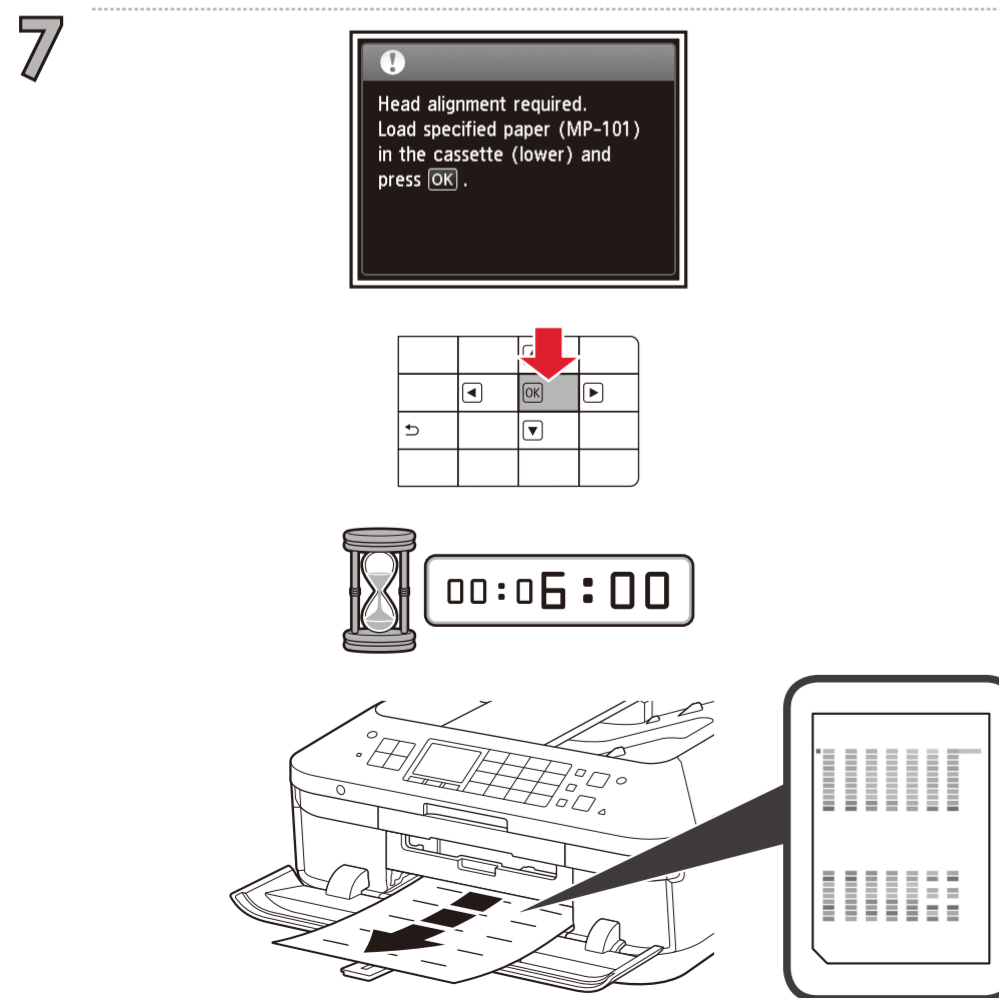
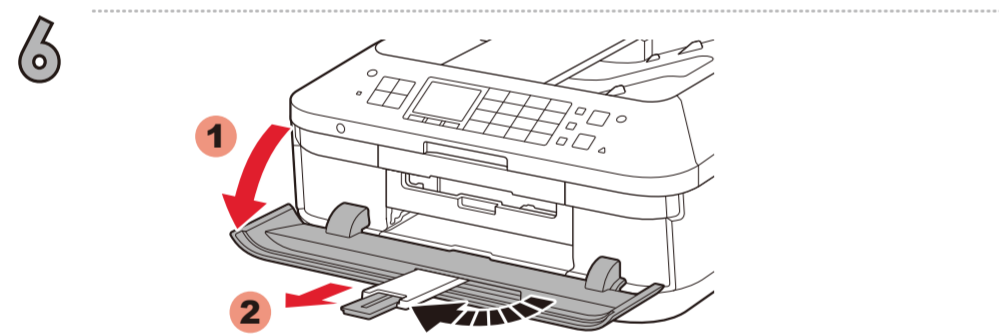
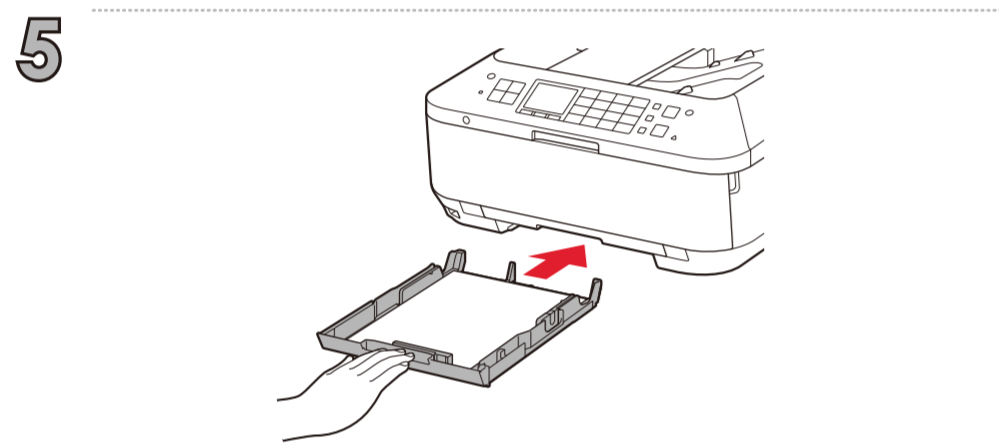
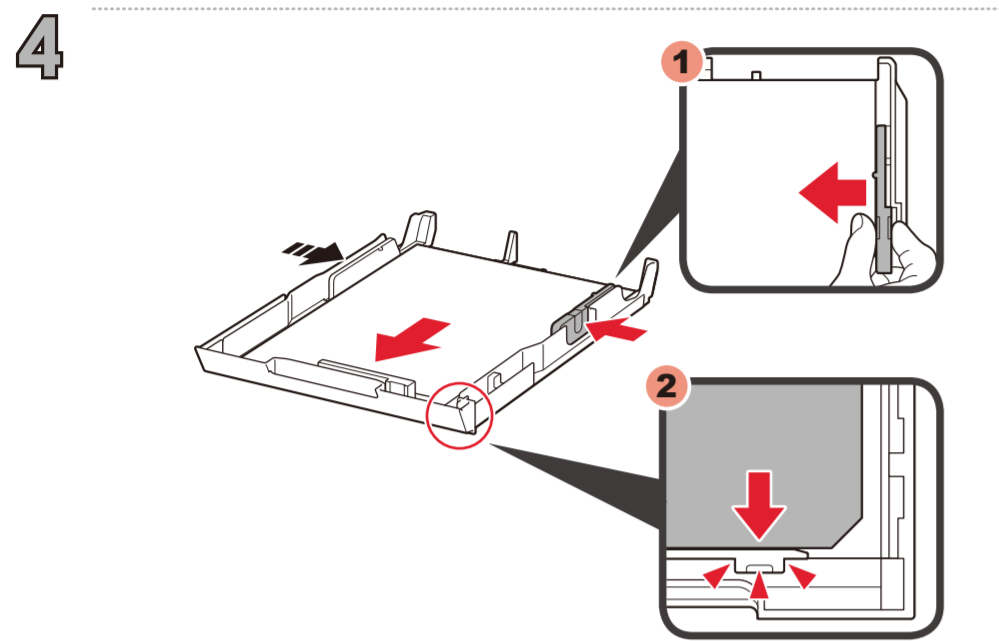
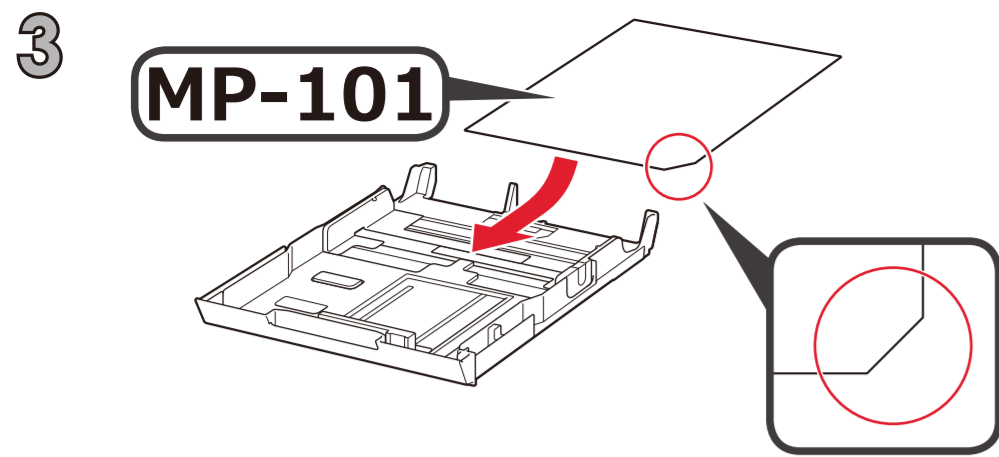


7

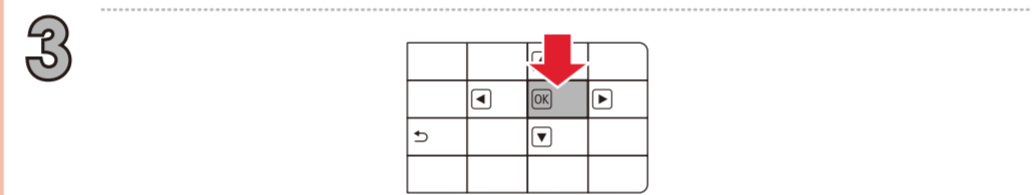
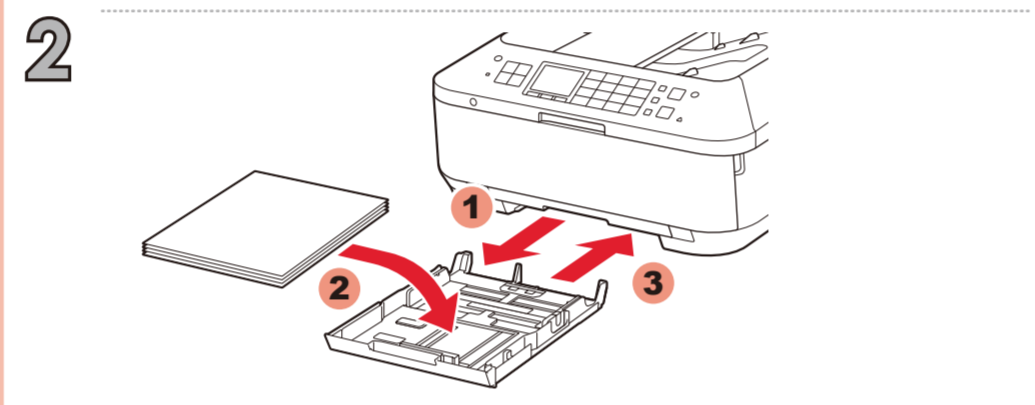
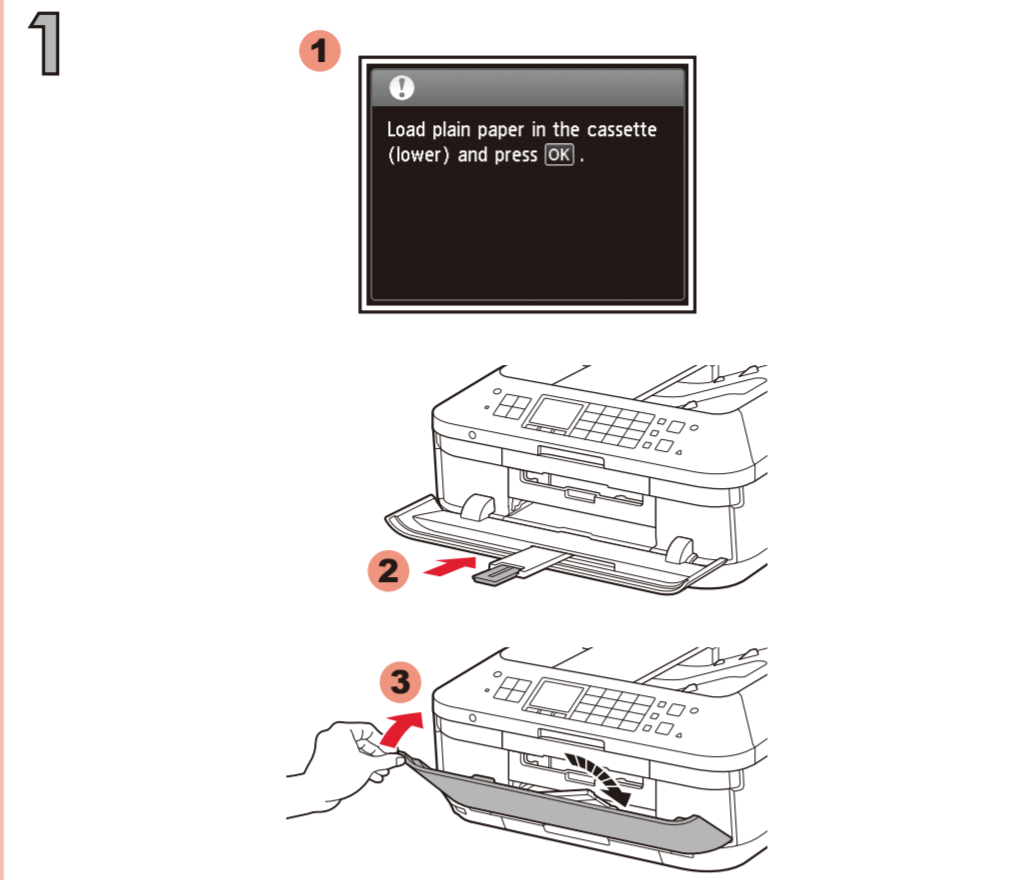


5

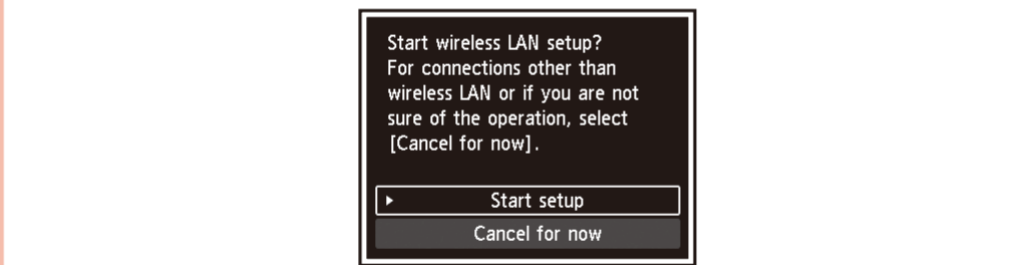




6



7



To connect to wireless LAN, select **Start setup** on the screen, then follow the on-screen instruction.

If you do not want to connect the machine to wireless LAN, select **Cancel for now**, then proceed to 8.

* You can select USB connection or wired LAN connection by following the instruction shown on the computer screen in 8.

Za povezivanje s bežičnom LAN vezom na zaslonu odaberite **<Start Setup>** (Pokreni postavljanje), a zatim pratite upute na zaslonu.

Ako uređaj ne želite povezati s bežičnom LAN vezom, odaberite **<Cancel for now>** (Zasad odustani), a zatim prijedite na 8.

* Možete odabrati USB vezu ili žičnu LAN vezu prateći upute koje se prikazuju na zaslonu računala pod 8.

כדי להתחבר לרשת אלחוטית, בחר את האפשרות **<Start Setup>** (התחל התקנה) שעל המסך ולאחר מכן פעל לפי ההוראות שעל המסך.

אם אינך מעונין לחבר את המכשיר לרשת LAN אלחוטית, בחר באפשרות **<Cancel for now>** (בטל לעת עתה), ולאחר מכן המשך אל 8.

* ניתן לבחור חיבור USB או חיבור LAN על ידי מילוי אחר ההוראות המוצגות במסך המחשב ב- 8.

8

