



macOS

PS MF Printer Driver

User's Guide

Contents

Introduction	2
How to Use the Manual	3
Notations Used in the Manual	4
Disclaimers	5
Copyright	6
Trademarks	7
Before Use	9
Installing the Driver	11
Preparations for Using the Driver	12
Pre-installation Check	13
System Requirements	14
About the Readme File	15
Installing the Driver	16
Registering a Printer	17
Registering a Printer Connected by TCP/IP	18
Registering a Printer Connected by USB	22
Registering a Printer Connected by Bonjour	26
Setting the Options of the Device	29
Uninstalling a Driver	31
Printing	34
Printing from an Application	35
Arranging Multiple Pages on One Sheet of Paper	36
Attaching a PIN to Print Data	37
Setting the Authentication Function	38
Registering Presets	39
Registering Custom Paper Sizes	40
Settings List	42
[Paper Source] Panel	43
[Basic] Panel	44
[Authenticate and Print] Panel	45
[Advanced] Panel	46
Troubleshooting	48
Cannot Register a Device Connected by Bonjour	49
Printing is Slow	50

Introduction

Introduction	2
How to Use the Manual	3
Notations Used in the Manual	4
Disclaimers	5
Copyright	6
Trademarks	7

Introduction

- ▶ **How to Use the Manual(P. 3)**
- ▶ **Disclaimers(P. 5)**
- ▶ **Copyright(P. 6)**
- ▶ **Trademarks(P. 7)**

How to Use the Manual

This explains things that you need to know in order to use this manual.

▶ **Notations Used in the Manual(P. 4)**

Notations Used in the Manual

This explains symbols and settings used in this manual.

Symbols Used in This Manual

In this manual, explanations of items and operations that must be followed while using the driver are set forth the symbols that indicate the following.



IMPORTANT

- Indicates operational requirements and restrictions. Be sure to read these items carefully to operate the product correctly, and avoid damage to the product.



NOTE

- Indicates a clarification of an operation, or contains additional explanations for a procedure. Reading these notes is highly recommended.

About Settings

In this manual, setting names displayed on the computer screen are represented as shown in the following examples.

Example:

[Print]

[OK]

Disclaimers

The information in this document is subject to change without notice.

CANON INC. MAKES NO WARRANTY OF ANY KIND WITH REGARD TO THIS MATERIAL, EITHER EXPRESS OR IMPLIED, EXCEPT AS PROVIDED HEREIN, INCLUDING WITHOUT LIMITATION, THEREOF, WARRANTIES AS TO MARKETABILITY, MERCHANTABILITY, FITNESS FOR A PARTICULAR PURPOSE OF USE OR NON-INFRINGEMENT. CANON INC. SHALL NOT BE LIABLE FOR ANY DIRECT, INCIDENTAL, OR CONSEQUENTIAL DAMAGES OF ANY NATURE, OR LOSSES OR EXPENSES RESULTING FROM THE USE OF THIS MATERIAL.

Copyright

Copyright CANON INC. 2018

No part of this publication may be reproduced, transmitted, transcribed, stored in a retrieval system, or translated into any language or computer language in any form or by any means, electronic, mechanical, magnetic, optical, chemical, manual, or otherwise, without the prior written permission of Canon Inc.

Trademarks

Microsoft and Windows are either registered trademarks or trademarks of Microsoft Corporation in the United States and/or other countries.

Apple, Mac, macOS, OS X, and Macintosh are trademarks of Apple Inc.

Other product and company names herein may be the trademarks of their respective owners.

Before Use

Before Use 9

Before Use

- The newest driver versions are released on the Canon website. You can download them as necessary after checking your operating environment.
Canon website: <http://www.canon.com/>
- The functions that you can use may vary according to the following conditions.
 - The device you are using and its configuration
 - The device firmware version
 - The option configuration
 - The driver version
 - The environment of the computer you are using
 - The application you are using
- There may be instances where the illustrations of displays and content of procedures in this manual differ from what is actually displayed.
- The descriptions in this manual use examples from macOS 10.12 (Sierra).

Installing the Driver

Installing the Driver	11
Preparations for Using the Driver	12
Pre-installation Check	13
System Requirements	14
About the Readme File	15
Installing the Driver	16
Registering a Printer	17
Registering a Printer Connected by TCP/IP	18
Registering a Printer Connected by USB	22
Registering a Printer Connected by Bonjour	26
Setting the Options of the Device	29
Uninstalling a Driver	31

Installing the Driver

This section explains driver installation and device preparation.

- ▶ **Preparations for Using the Driver(P. 12)**
- ▶ **Pre-installation Check(P. 13)**
- ▶ **Installing the Driver(P. 16)**
- ▶ **Registering a Printer(P. 17)**
- ▶ **Setting the Options of the Device(P. 29)**
- ▶ **Uninstalling a Driver(P. 31)**

Preparations for Using the Driver

Before using the driver and printing, there are preparations that need to be done beforehand.

Carry out preparations and settings in the following order.

1. Obtain an installer by one of the following methods.
 - Download it from the Canon website (<http://www.canon.com/>)
 - Supplied CD-ROM
2. Install the driver to the operating system.
3. Register the printer you want to use to the operating system.
4. Set the device options as necessary.



NOTE

- You can check the version of the installed driver in the [Basic] panel.

Related Topics

- ▶ **Installing the Driver(P. 16)**
- ▶ **Registering a Printer Connected by TCP/IP(P. 18)**
- ▶ **Registering a Printer Connected by USB(P. 22)**
- ▶ **Registering a Printer Connected by Bonjour(P. 26)**
- ▶ **Setting the Options of the Device(P. 29)**

Pre-installation Check

This describes the items to be checked beforehand in order to install the driver correctly.

- ▶ **System Requirements(P. 14)**
- ▶ **About the Readme File(P. 15)**

System Requirements

Use one of the following system environments with this driver.

Operating Systems

Mac OS X 10.8.5 or later

Hardware

A computer guaranteed to operate using the above operating system.

About the Readme File

The following content is contained in the Readme file.

- Limitations, restrictions, and cautions when installing or using the driver
- Devices that support the driver

Refer to README-ENG.html in the accompanying CD-ROM or the downloaded driver folder.

Installing the Driver

This section explains the procedure for installing the driver to the operating system.

Install the driver and register the printer to use.

Prerequisites

- Obtain the driver installer.
- **System Requirements(P. 14)**
- Close all running applications.
- If the computer and device are connected by USB, turn off the main power of the device.

Procedures

1 Open the driver installer folder → select [PS_MF_Printer_Installer.pkg] or [Canon_Driver.pkg].

2 Read the Software License Agreement → click [Continue].

If a dialog box asking you to confirm that you agree to the Software License Agreement is displayed, click [Agree].

3 Click [Install].

If a dialog box for entering a user name and/or password is displayed, enter the name and password of a computer administrator and continue according to the instructions in the dialog box.

4 Click [Close].

Register the printer.

Related Topics

- ▶ **Preparations for Using the Driver(P. 12)**
- ▶ **Registering a Printer Connected by TCP/IP(P. 18)**
- ▶ **Registering a Printer Connected by USB(P. 22)**
- ▶ **Registering a Printer Connected by Bonjour(P. 26)**

Registering a Printer

Register the printer you are going to use.

Select a registration method according to the method by which the computer and printer are connected.

- ▶ **Registering a Printer Connected by TCP/IP(P. 18)**
- ▶ **Registering a Printer Connected by USB(P. 22)**
- ▶ **Registering a Printer Connected by Bonjour(P. 26)**

Registering a Printer Connected by TCP/IP

You can register a printer connected by LPD (Line Printer Daemon) in the operating system.

Prerequisites

- **System Requirements(P. 14)**
- **Installing the Driver(P. 16)**
- Confirmation of driver names corresponding to the printer
For driver names corresponding to printers, refer to the Readme file.
- Confirmation of specified IP address
If you do not know the IP address, check with the network administrator or check the network settings. For details, refer to the manual of the device.



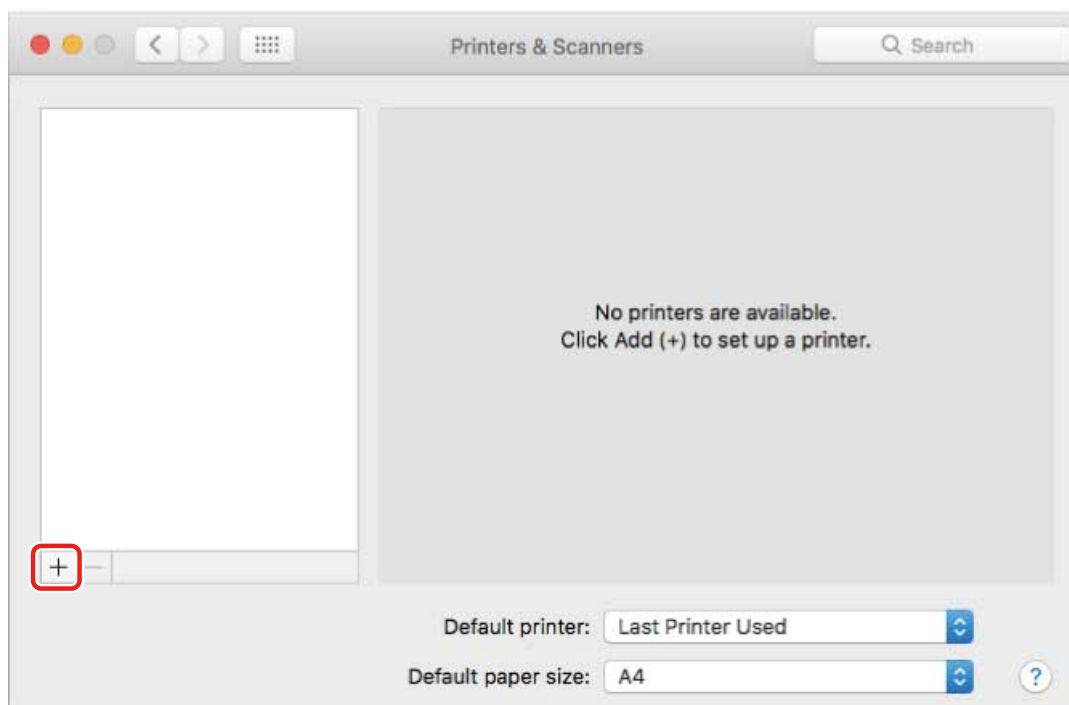
NOTE

- If IPP (Internet Printing Protocol) is usable, only IPv4 is supported.

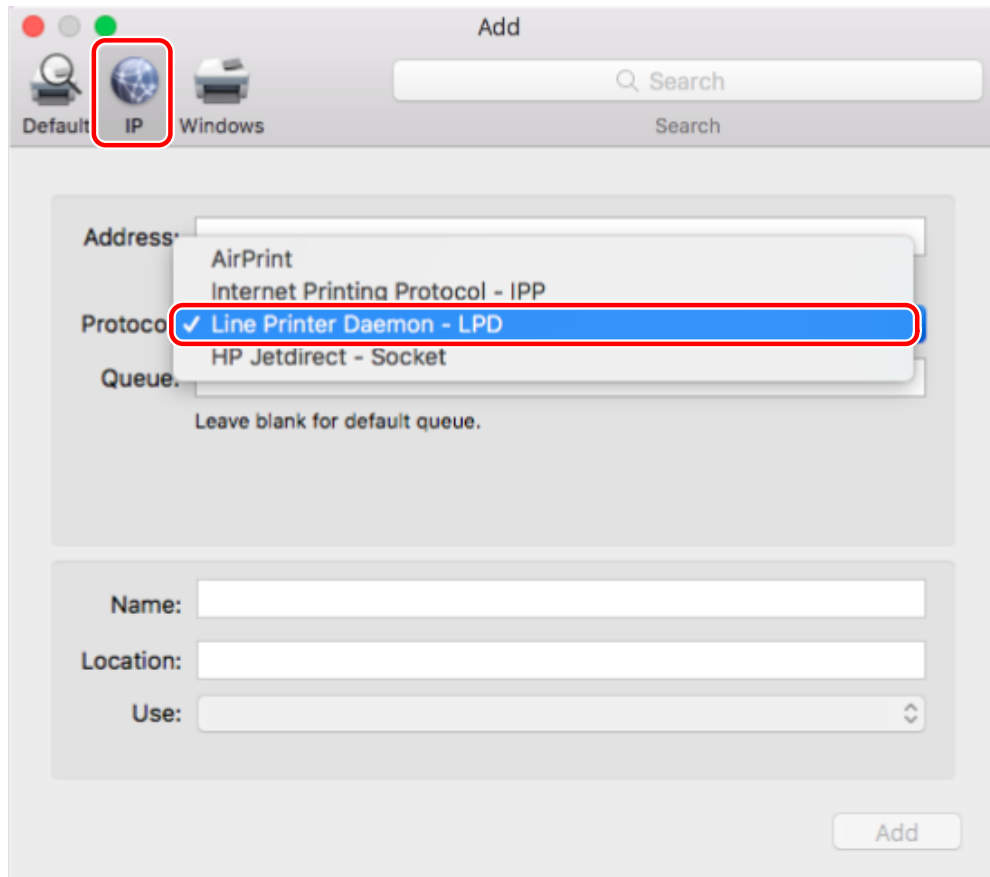
Procedures

- 1 Display the [System Preferences] dialog box of the operating system → click [Printers & Scanners].**
- 2 Click [+] at the bottom of the displayed dialog box.**

If a pull-down menu is displayed after you click [+], select [Add Printer or Scanner].

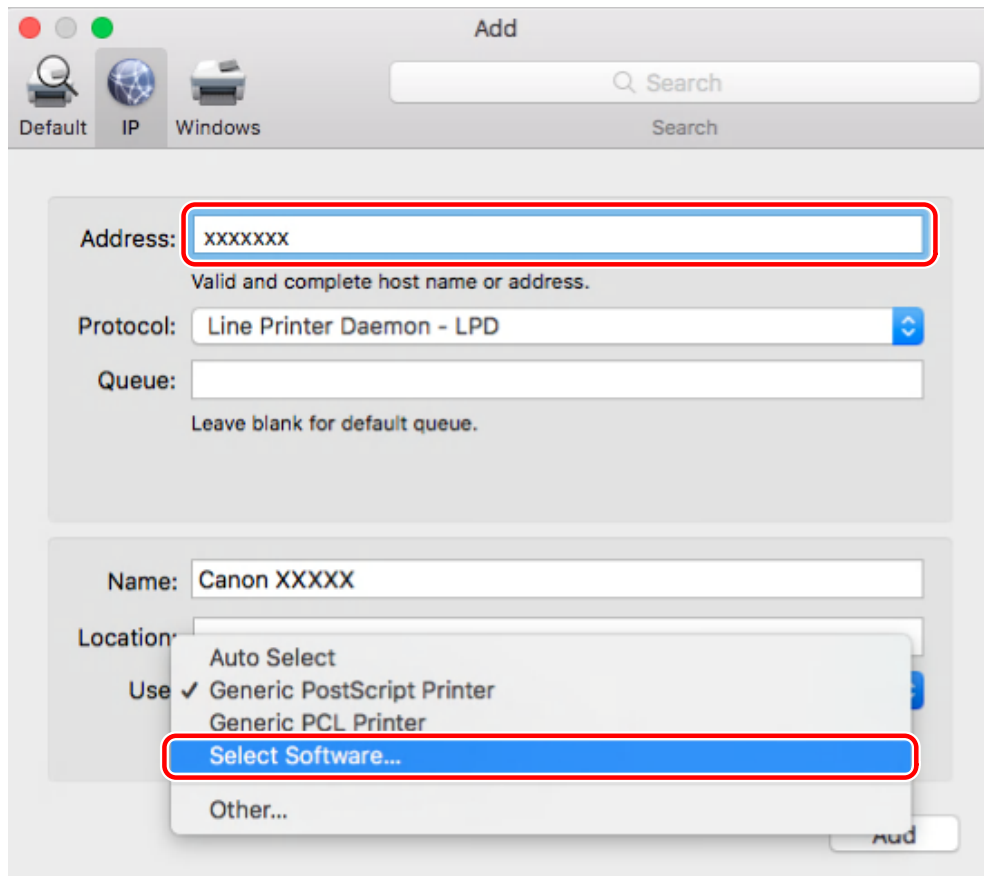


3 Select [IP] in the toolbar → select [Line Printer Daemon - LPD] from [Protocol].



4 Enter the printer's IP address in [Address] → select [Select Software] from [Use].

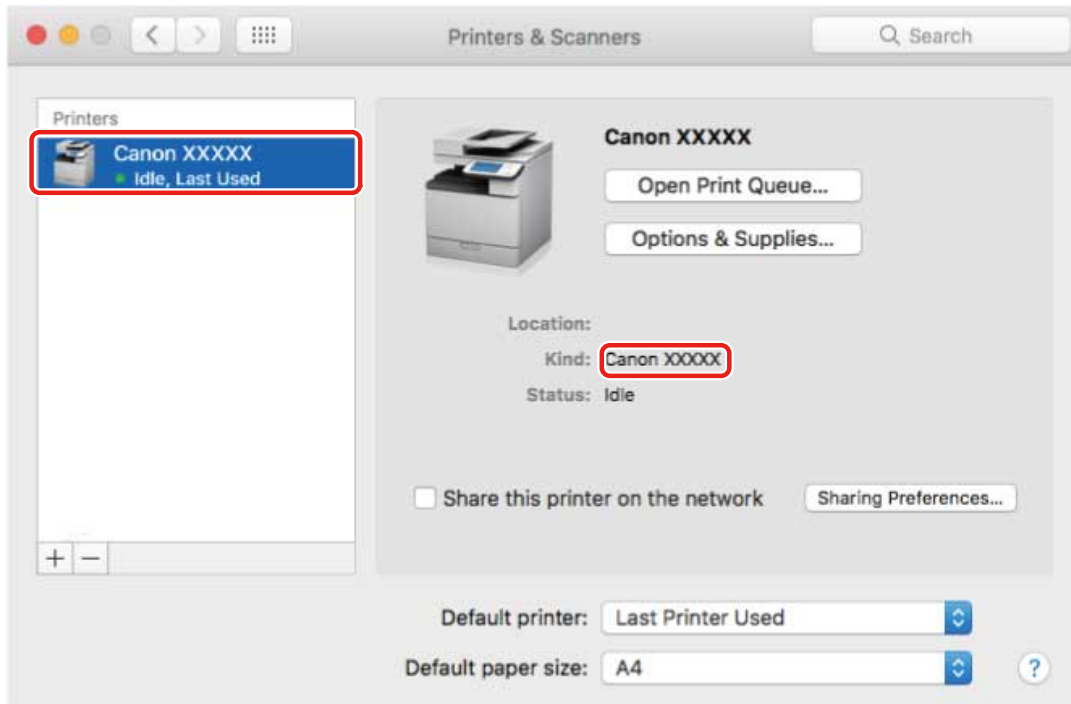
If the driver corresponding to the printer is displayed in [Use], proceed to step 6.(P. 20) .



NOTE

- A message indicating that the IP address is incorrect may be displayed even if the correct IP address has been entered.

- 5** Select the driver corresponding to the printer from the list in the [Printer Software] dialog box → click [OK].
- 6** Change [Name] for the printer as necessary → click [Add].
- 7** Check that the registered printer and model are displayed in the dialog box.



Set the device options as necessary.

Related Topics

- ▶ Preparations for Using the Driver(P. 12)
- ▶ About the Readme File(P. 15)
- ▶ Setting the Options of the Device(P. 29)

Registering a Printer Connected by USB

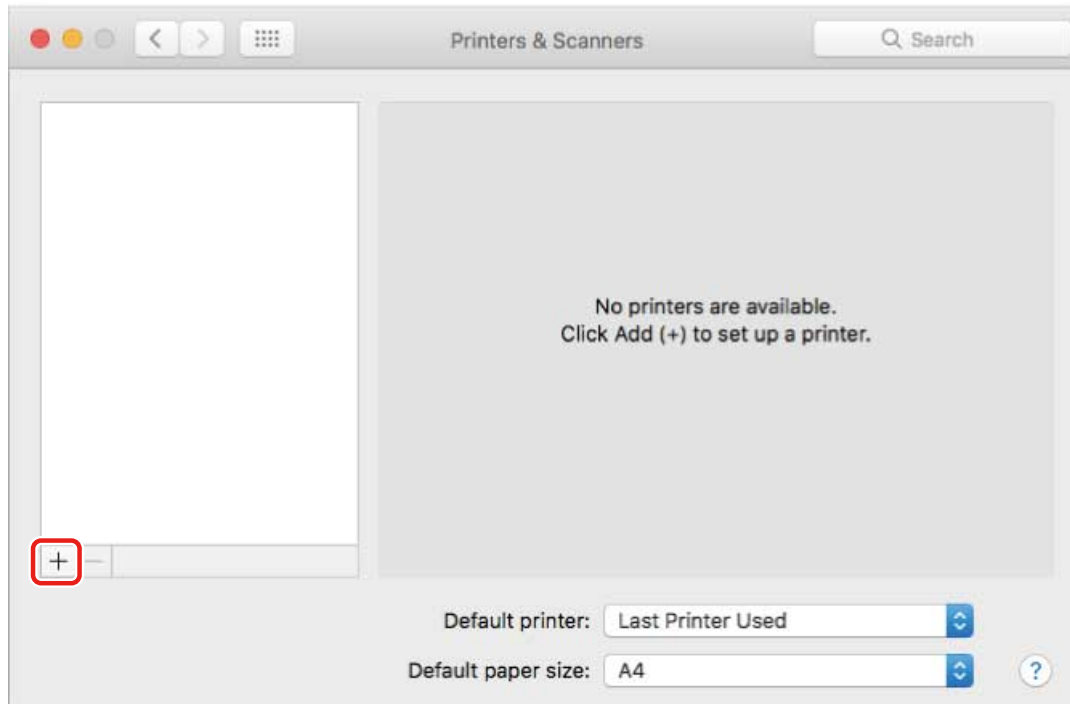
You can register a printer connected by USB in the operating system.

Prerequisites

- **System Requirements(P. 14)**
- **Installing the Driver(P. 16)**
- Confirmation of driver names corresponding to the printer
For driver names corresponding to printers, refer to the Readme file.
- Installation of the optional USB interface board (if required with the printer you are using)

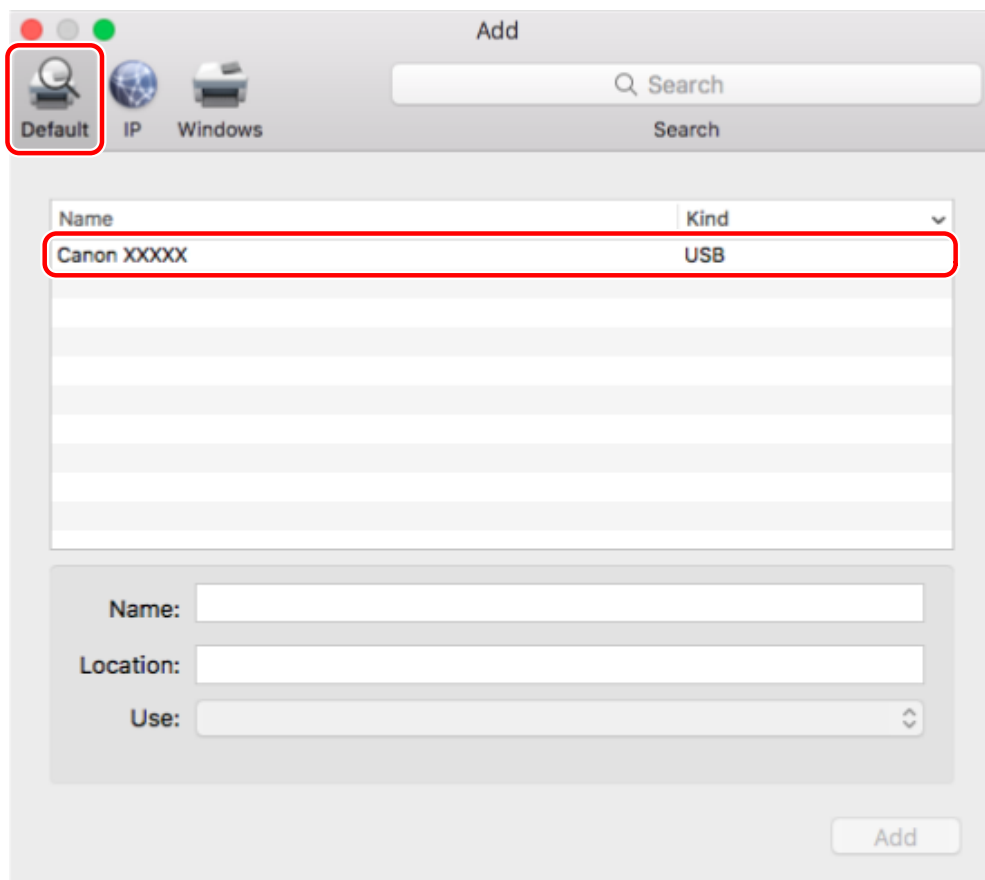
Procedures

- 1 Display the [System Preferences] dialog box of the operating system → click [Printers & Scanners].**
- 2 Turn the printer on → connect the printer and the computer by USB cable.**
- 3 Check that the connected printer and model are displayed in the dialog box.**
If the connected printer and model are not displayed, perform the following procedure.
- 4 Click [+] at the bottom of the displayed dialog box.**
If a pull-down menu is displayed after you click [+], select [Add Printer or Scanner].

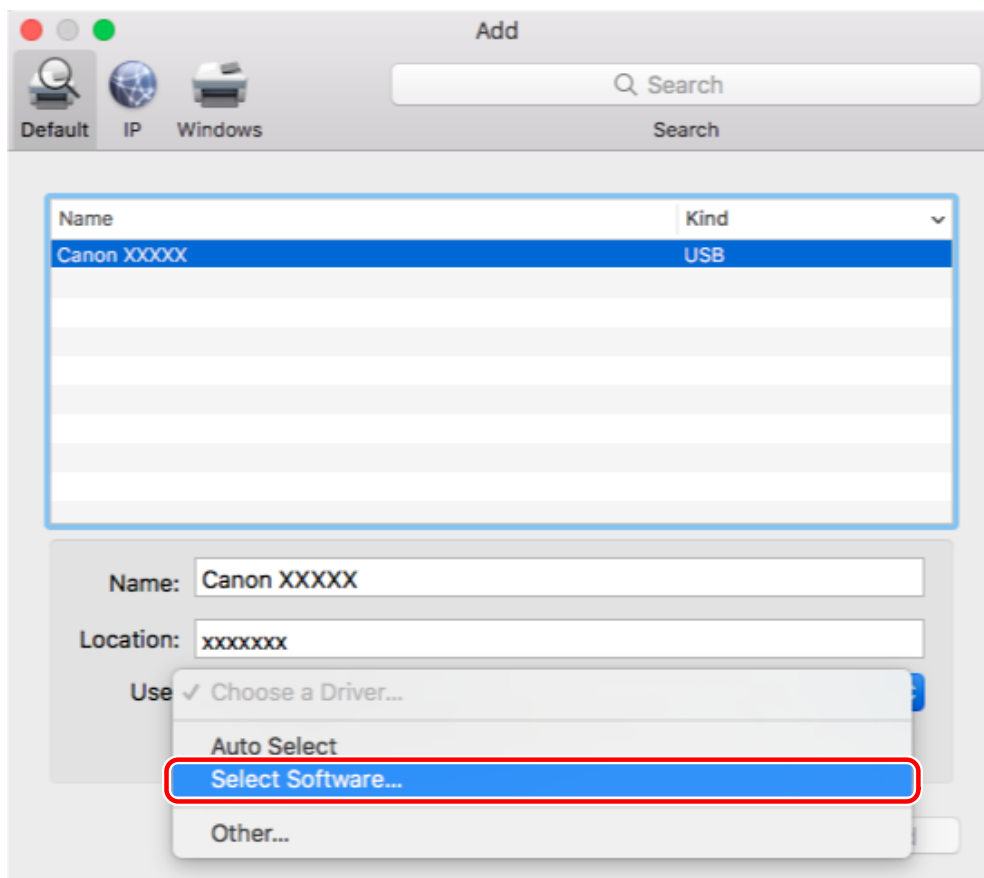


5 Select [Default] in the toolbar → select a printer from the list.

Select a printer displayed as "USB" in [Kind].



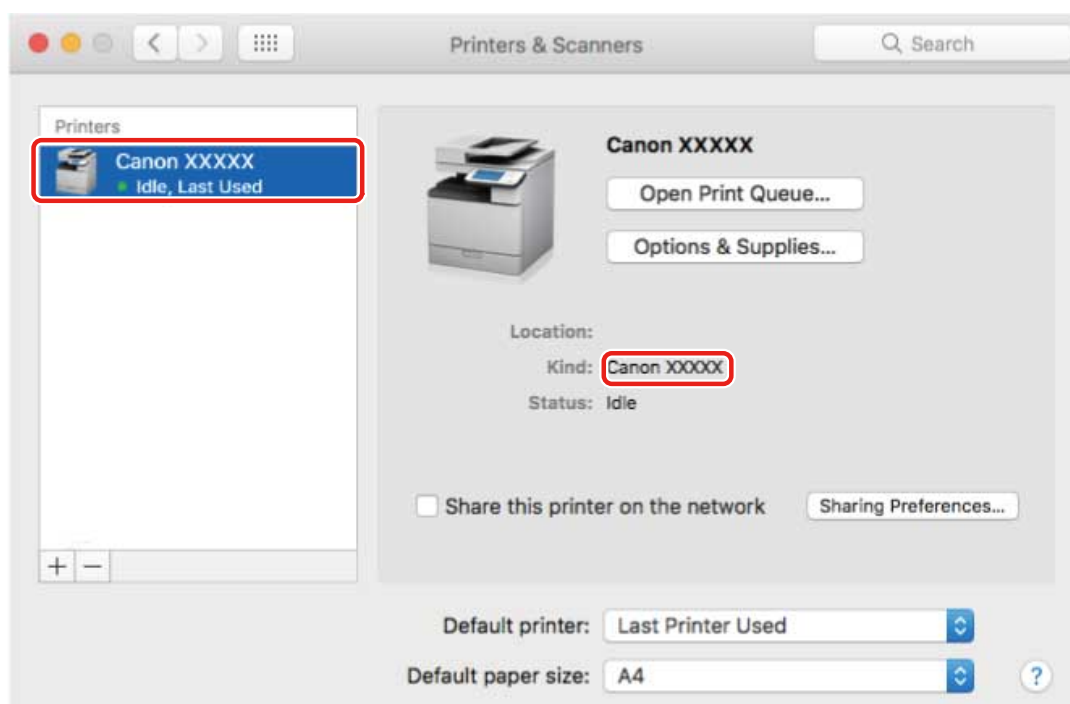
6 Select [Select Software] from [Use].



7 Select the driver corresponding to the printer from the list in the [Printer Software] dialog box → click [OK].

8 Change [Name] for the printer as necessary → click [Add].

9 Check that the registered printer and model are displayed in the dialog box.



Set the device options as necessary.

Related Topics

- ▶ [Preparations for Using the Driver\(P. 12\)](#)
- ▶ [About the Readme File\(P. 15\)](#)
- ▶ [Setting the Options of the Device\(P. 29\)](#)

Registering a Printer Connected by Bonjour

You can register a printer connected by Bonjour to the operating system.

Prerequisites

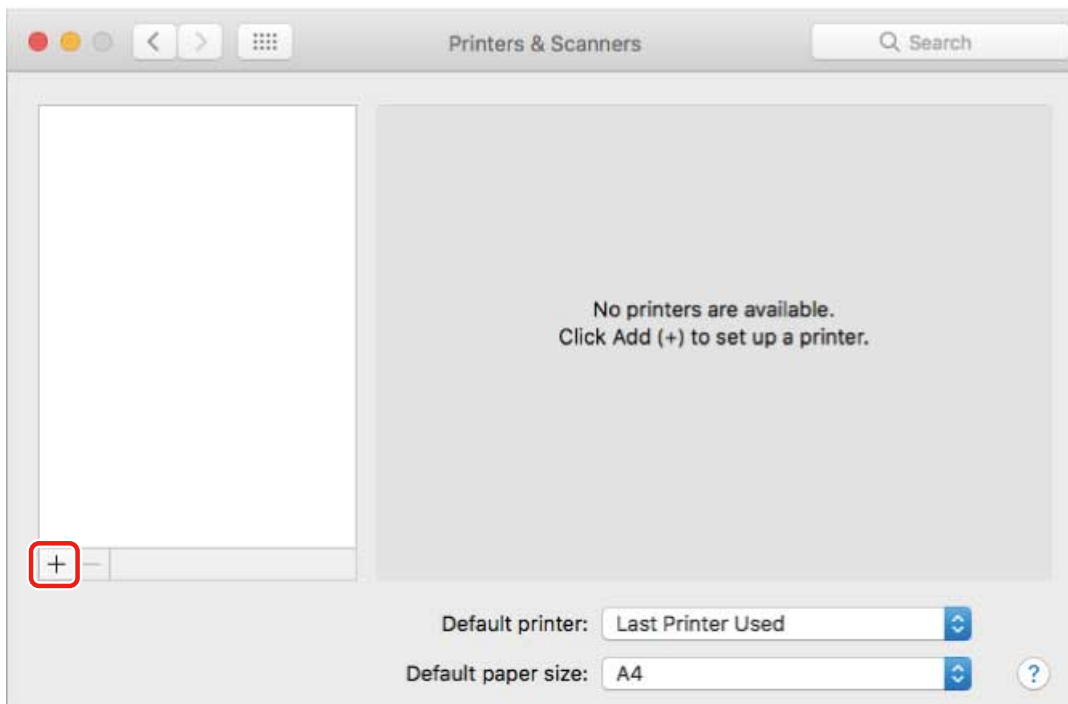
- **System Requirements(P. 14)**
- **Installing the Driver(P. 16)**
- Confirmation of driver names corresponding to the printer
For driver names corresponding to printers, refer to the Readme file.

Procedures

1 Display the [System Preferences] dialog box of the operating system → click [Printers & Scanners].

2 Click [+] at the bottom of the displayed dialog box.

If a pull-down menu is displayed after you click [+], select [Add Printer or Scanner].

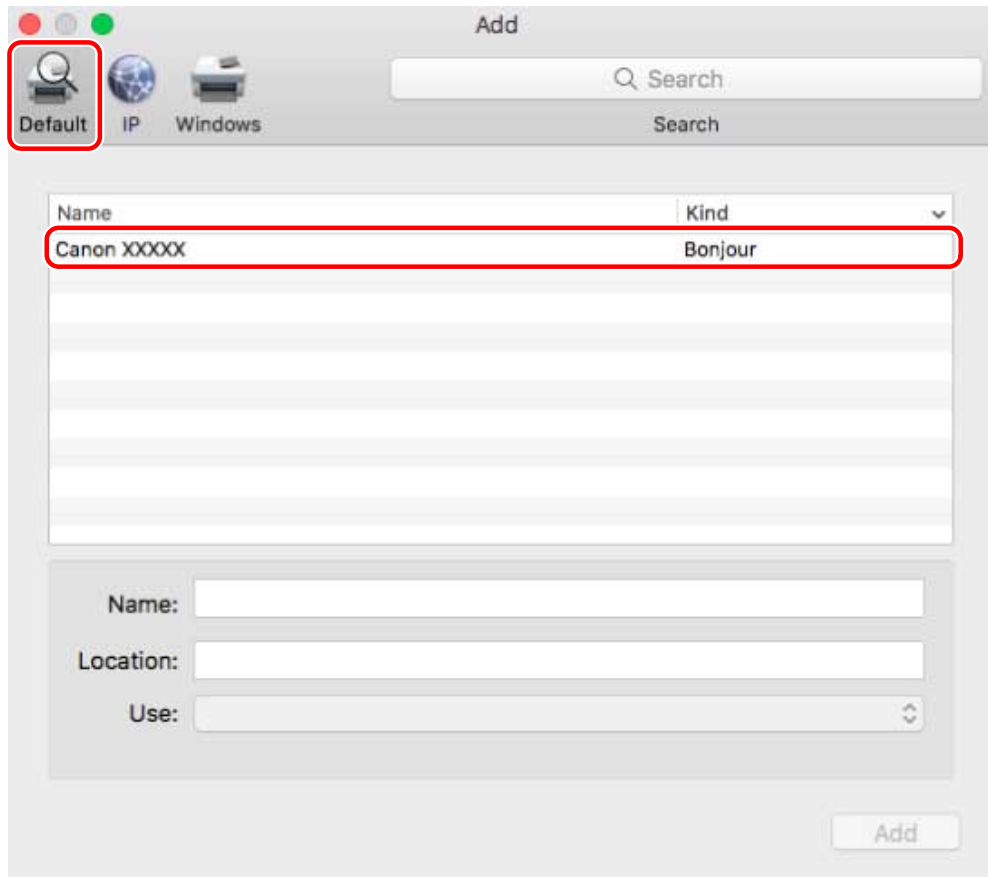


3 Select [Default] in the toolbar → select a printer from the list.

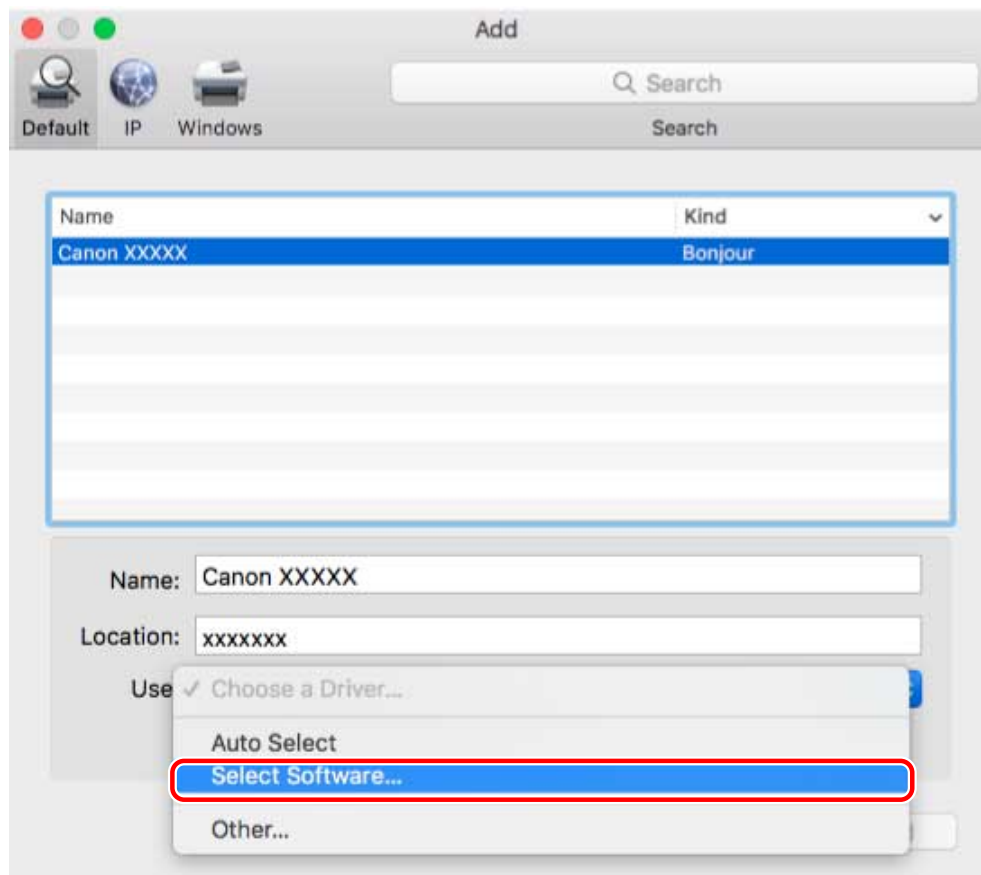
Select a printer displayed as "Bonjour" in [Kind].

If the corresponding driver is already registered in [Use] in the displayed dialog box, proceed to step 7. (P. 28) .

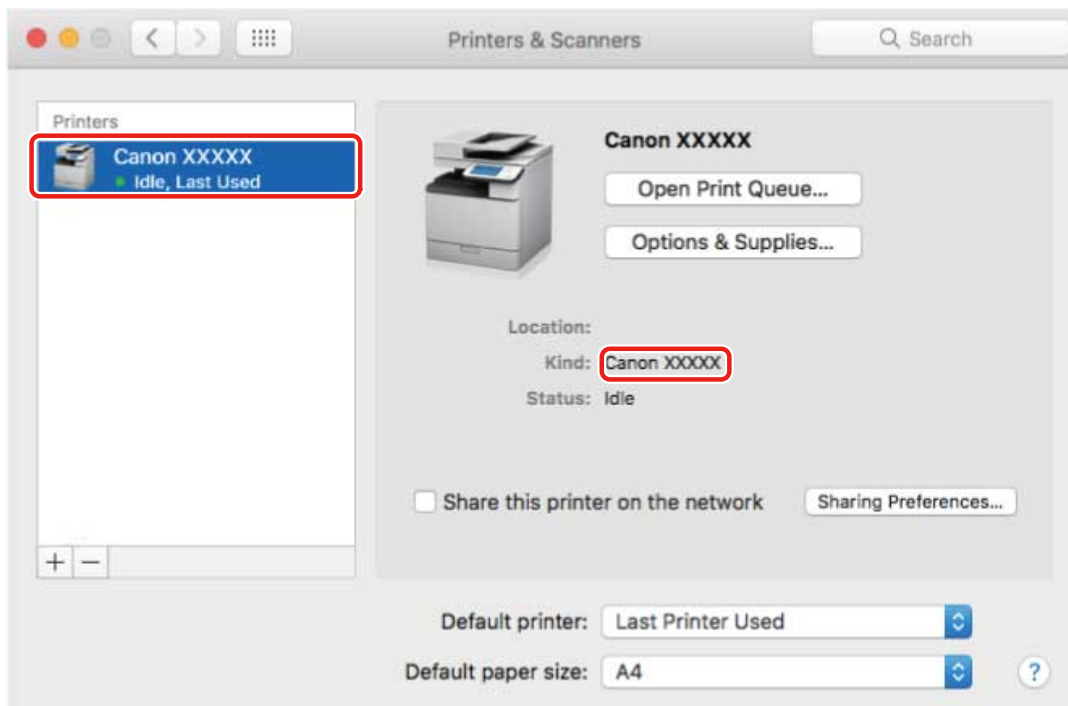
Installing the Driver



4 Select [Select Software] from [Use].



- 5** Select the driver corresponding to the printer from the list in the [Printer Software] dialog box → click [OK].
- 6** Change [Name] for the printer as necessary → click [Add].
- 7** Check that the registered printer and model are displayed in the dialog box.



Set the device options as necessary.

Related Topics

- ▶ Preparations for Using the Driver(P. 12)
- ▶ About the Readme File(P. 15)
- ▶ Setting the Options of the Device(P. 29)

Setting the Options of the Device

You can set the options (paper supply drawers, finisher, etc.) installed in the device.

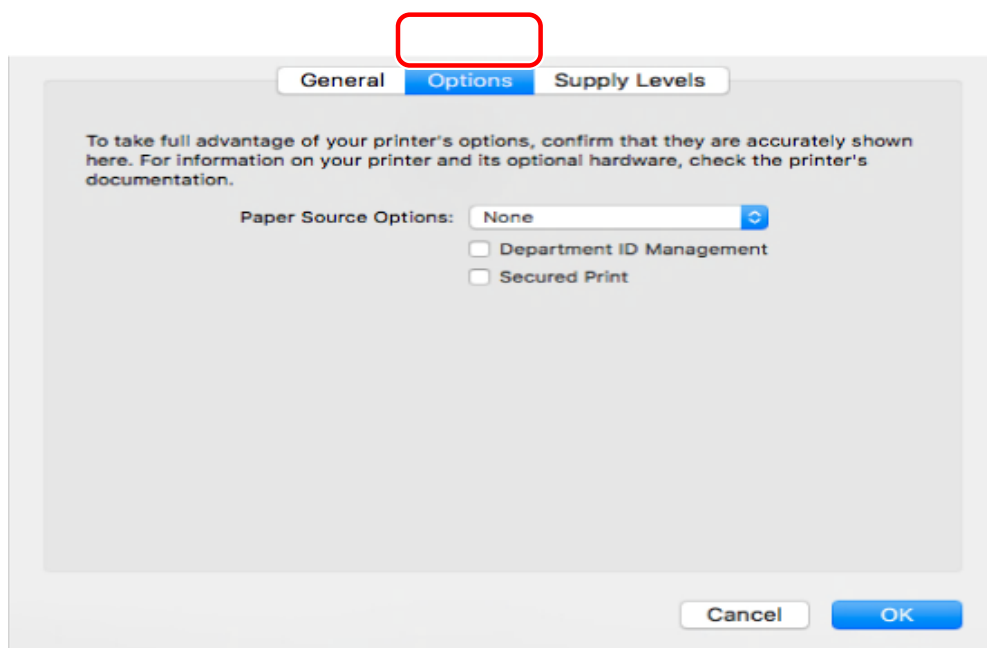
When using the device for the first time or changing the options of the device, the options must be set in order to be able to use the functions of the device.

Prerequisites

- **Installing the Driver(P. 16)**
- **Registering a Printer(P. 17)**
- Confirmation of driver names corresponding to the device
For driver names corresponding to devices, refer to the Readme file.

Procedures

- 1** Display the [System Preferences] dialog box of the operating system → click [Printers & Scanners].
- 2** Select the device → click [Options & Supplies].
- 3** Click [Options].



- 4** In the displayed dialog box, check the options of the device → click [OK].



NOTE

- Select only the options that are actually installed in the device.
- For information on operating the device, check the manual of the device.

Related Topics

- ▶ **Preparations for Using the Driver(P. 12)**
- ▶ **About the Readme File(P. 15)**
- ▶ **Registering a Printer Connected by TCP/IP(P. 18)**
- ▶ **Registering a Printer Connected by USB(P. 22)**
- ▶ **Registering a Printer Connected by Bonjour(P. 26)**

Uninstalling a Driver

This explains the procedure for uninstalling a driver that is no longer needed.

Prerequisites

- When connected by USB, removal of the USB cable connecting the device and the computer
- Confirmation of the device name to be deleted

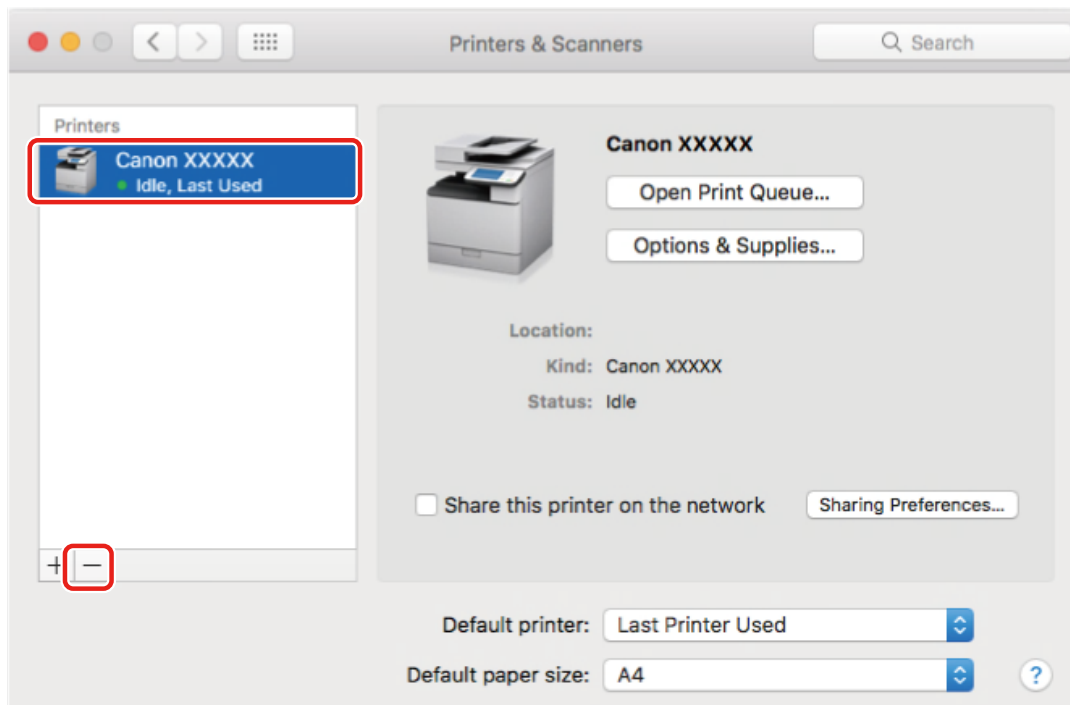


NOTE

- The driver can be upgraded. It is not necessary to uninstall the old driver.

Procedures

- 1 Display the [System Preferences] dialog box of the operating system → click [Printers & Scanners].
- 2 Select the device to be uninstalled → click [-] displayed at the bottom of the dialog box.



- 3 Delete the files of the driver to be uninstalled in the following folders of the operating system.

Library/Printers/Canon/CUPSPSMF

Library/Printers/PPDs/Contents/Resources/CNMC****SB.ppd.gz

The name represented by "****" varies according to the device.

If a confirmation dialog box is displayed, enter an administrator name and password and click [OK].

4 Restart the operating system.

Printing

Printing	34
Printing from an Application	35
Arranging Multiple Pages on One Sheet of Paper	36
Attaching a PIN to Print Data	37
Setting the Authentication Function	38
Registering Presets	39
Registering Custom Paper Sizes	40

Printing

- ▶ **Printing from an Application(P. 35)**
- ▶ **Arranging Multiple Pages on One Sheet of Paper(P. 36)**
- ▶ **Attaching a PIN to Print Data(P. 37)**
- ▶ **Setting the Authentication Function(P. 38)**
- ▶ **Registering Presets(P. 39)**
- ▶ **Registering Custom Paper Sizes(P. 40)**

Printing from an Application

This explains the basic procedure for displaying the print dialog box of the driver and printing from an application.

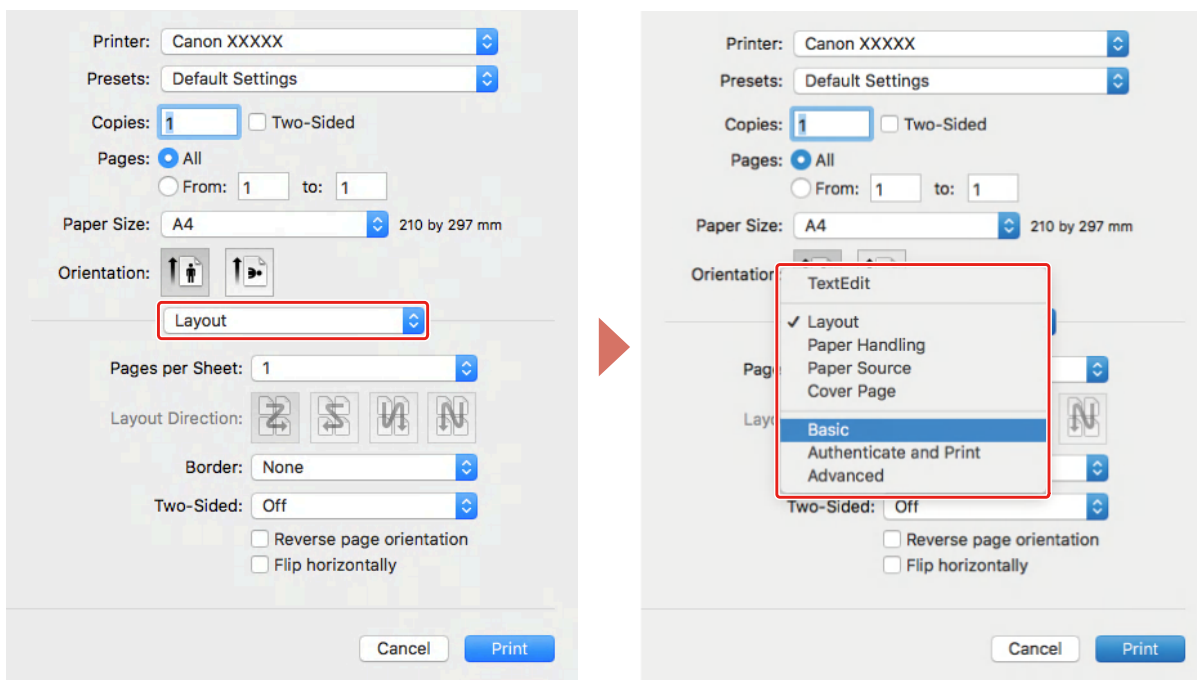
 **NOTE**

- [Printer Features] may be displayed in the popup menu, depending on the application you are using. In this case, switch [Feature Sets] on the [Printer Features] panel to display the items to set.

1 Select [Print] from the application's [File] menu.

2 Select a device from [Printer] → select the panel from the pop-up menu and set the necessary items.

If no print options are displayed, click [Show Details] at the bottom of the dialog box.



 **NOTE**

- If the functions you want to use are not displayed in the print options, enable the device options etc., then configure the print settings.

3 Click [Print].

Related Topics

- Preparations for Using the Driver(P. 12)

Arranging Multiple Pages on One Sheet of Paper

This section explains the procedure for printing multiple pages on a single sheet of paper.

Select the direction you want to arrange the pages in on the paper and print borders around the arranged pages.

- 1 Select [Layout] from the pop-up menu.**
- 2 Select the number of pages to be arranged on each sheet of paper from [Pages per Sheet].**

For detailed settings such as the direction in which the pages are arranged, printing borders around each page, etc., perform the following procedure.
- 3 Select what direction the pages are to be arranged in from [Layout Direction].**
- 4 Select the type of border from [Border].**
- 5 Select the binding location when performing two-sided printing from [Two-Sided].**

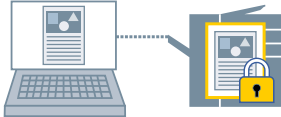
Attaching a PIN to Print Data

You can attach a PIN to print data and save it in the device. This is useful when printing confidential documents etc.



NOTE

- To use this function, it may be necessary to enable secure printing in the device options in advance, depending on the device model.



- 1** Select **[Authenticate and Print]** from the pop-up menu.
- 2** Select **[Use Secured Print]** → enter **[Document Name]**, **[User Name]**, and **[PIN]**.

Related Topics

- ▶ [Setting the Options of the Device\(P. 29\)](#)
- ▶ [\[Authenticate and Print\] Panel\(P. 45\)](#)

Setting the Authentication Function

You can perform print management by means of the department ID management function.



NOTE

- To use this function, enable the authentication function in the device options in advance.



- 1** Select [Authenticate and Print] from the pop-up menu.
- 2** Select [Use Department ID Management] → enter [Department ID] or [PIN].

Related Topics

- ▶ [Setting the Options of the Device\(P. 29\)](#)
- ▶ [\[Authenticate and Print\] Panel\(P. 45\)](#)

Registering Presets

You can register frequently used print settings in [Presets] and recall the settings when printing.

- 1** Select a panel in the pop-up menu and set the functions to register as a preset.
- 2** Select [Save Current Settings as Preset] from [Presets].
- 3** Enter [Preset Name] → select [Preset Available For] → click [OK].

Registering Custom Paper Sizes

You can register a desired paper size and use it for printing.

A registered custom paper size can also be used when printing from another device.

- 1** Select **[Manage Custom Sizes]** from **[Paper Size]** in the print dialog box.
- 2** Click **[+]** at the bottom of the displayed dialog box.
- 3** Configure detailed settings such as the name, dimensions, etc. of the custom paper size → click **[OK]**.

Settings List

Settings List	42
[Paper Source] Panel	43
[Basic] Panel	44
[Authenticate and Print] Panel	45
[Advanced] Panel	46

Settings List

- ▶ [Paper Source] Panel(P. 43)
- ▶ [Basic] Panel(P. 44)
- ▶ [Authenticate and Print] Panel(P. 45)
- ▶ [Advanced] Panel(P. 46)

[Paper Source] Panel

You can set the paper type and paper source.

[Select by]

Specifies whether to set the paper to print on from a paper source or by paper type.

[Paper Source]

Select this to specify the paper to print on from a paper source. If you select [Auto], a paper source is automatically selected according to the specified output paper size.

[Paper Type]

Select this to specify the paper to print on by paper type. If [Settings] is displayed, display the dialog box for selecting the paper type, and set the paper type.

[Basic] Panel

You can set the print quality, printing colors, etc.

[Settings]

Sets the resolution, colors, etc.

[Quality]

Selects whether to print with fine rendering or standard rendering.

[Color Mode]

Switches between printing in color or black-and-white.

[Toner Save]

Saves toner by reducing its density when printing.

[Smooth Outline of Characters and Figures]

Corrects the smoothness of the contours of text and diagrams by means of a smoothing process.

[Adjustments]

Adjusts brightness.

[Brightness]

Adjust the brightness by moving the slider.

[Version]

Displays information about the driver version.

[Authenticate and Print] Panel

You can manage the print status by department, and encrypt and print the print data, etc.

[Use Secured Print]

Sets a PIN in the print data and saves it to the device.

The saved data can be printed by entering the PIN at the control panel of the device.

[Use Department ID Management]

Manages the print status of each department.

You can print by entering the department ID and PIN registered in the device.

Related Topics

- ▶ [Attaching a PIN to Print Data\(P. 37\)](#)
- ▶ [Setting the Authentication Function\(P. 38\)](#)

[Advanced] Panel

When printing text or images, you can improve the print results when contours are hazy or blurred.

[Smooth Outline of Characters and Figures]

Corrects the smoothness of the contours of text and diagrams by means of a smoothing process.

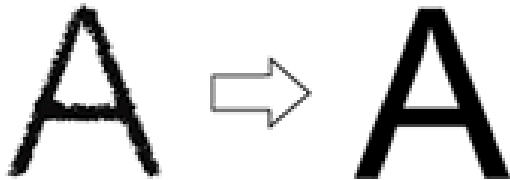
[Improve Barcode Printing]

Improves fine lines such as barcodes etc. so that they are not blurred or broken.

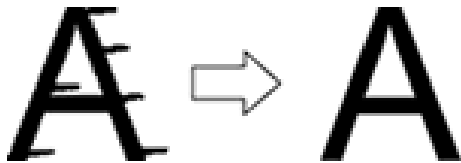
[Reduce Blurring/Smudging]

Adjusts the level of toner fixing to improve the print result.

Strengthening blur improvement improves the haziness of contours.



Strengthening improvement of striping improves prolonged striping.



Troubleshooting

Troubleshooting	48
Cannot Register a Device Connected by Bonjour	49
Printing is Slow	50

Troubleshooting

This explains solutions to common problems.

Limitations and precautions are also included in the Readme file.

- ▶ **Cannot Register a Device Connected by Bonjour(P. 49)**
- ▶ **Printing is Slow(P. 50)**

Cannot Register a Device Connected by Bonjour

When registering a device connected by Bonjour in the operating system, the corresponding device may not be displayed in the [Add] dialog box.

If this happens, it could be due to a number of causes. Change settings as necessary by referring to each "Remedy."

Cause 1.

The settings of the device are incorrect

Remedy

Confirm that the Bonjour settings in the control panel of the device are enabled. For details, refer to the manual of the device.

Cause 2.

The network settings of the operating system are incorrect

Remedy

Check whether the necessary settings have been configured in the network settings of the operating system. If they have not been set, change the settings according to the following procedure.

- (1) Display the [System Preferences] dialog box of the operating system → click [Network].
- (2) Enable the network settings you are using in the [Network] panel.
- (3) Click the [Finder] icon → click [Finder] > [Preferences] in the menu bar.
- (4) Click the [General] tab in the [Finder Preferences] dialog box → enable [Connected servers].

Cause 3.

The driver has not been installed correctly

Remedy

Reinstall the driver and register the device again.

Related Topics

- ▶ [Installing the Driver\(P. 16\)](#)

Printing is Slow

If transmission takes a long time when sending data to the device, it could be caused by the following. Follow the instructions described in "Remedy."

Cause

The amount of data being sent to the device is large, such as a document containing color photographs or large images

Remedy

If the resolution of the image is higher than needed, set the resolution to an appropriate value in the [Basic] panel > [Settings] > [Quality].

Related Topics

▶ [\[Basic\] Panel\(P. 44\)](#)

This Font Software is licensed under the SIL Open Font License, Version 1.1.

This license is copied below, and is also available with a FAQ at: <http://scripts.sil.org/OFL>

SIL OPEN FONT LICENSE Version 1.1 - 26 February 2007

PREAMBLE

The goals of the Open Font License (OFL) are to stimulate worldwide development of collaborative font projects, to support the font creation efforts of academic and linguistic communities, and to provide a free and open framework in which fonts may be shared and improved in partnership with others.

The OFL allows the licensed fonts to be used, studied, modified and redistributed freely as long as they are not sold by themselves. The fonts, including any derivative works, can be bundled, embedded, redistributed and/or sold with any software provided that any reserved names are not used by derivative works. The fonts and derivatives, however, cannot be released under any other type of license. The requirement for fonts to remain under this license does not apply to any document created using the fonts or their derivatives.

DEFINITIONS

"Font Software" refers to the set of files released by the Copyright Holder(s) under this license and clearly marked as such. This may include source files, build scripts and documentation.

"Reserved Font Name" refers to any names specified as such after the copyright statement(s).

"Original Version" refers to the collection of Font Software components as distributed by the Copyright Holder(s).

"Modified Version" refers to any derivative made by adding to, deleting, or substituting -- in part or in whole -- any of the components of the Original Version, by changing formats or by porting the Font Software to a new environment.

"Author" refers to any designer, engineer, programmer, technical writer or other person who contributed to the Font Software.

PERMISSION & CONDITIONS

Permission is hereby granted, free of charge, to any person obtaining a copy of the Font Software, to use, study, copy, merge, embed, modify, redistribute, and sell modified and unmodified copies of the Font Software, subject to the following conditions:

- 1) Neither the Font Software nor any of its individual components, in Original or Modified Versions, may be sold by itself.
- 2) Original or Modified Versions of the Font Software may be bundled, redistributed and/or sold with any software, provided that each copy contains the above copyright notice and this license. These can be included either as stand-alone text files, human-readable headers or in the appropriate machine-readable metadata fields within text or binary files as long as those fields can be easily viewed by the user.
- 3) No Modified Version of the Font Software may use the Reserved Font Name(s) unless explicit written permission is granted by the corresponding Copyright Holder. This restriction only applies to the primary font name as presented to the users.
- 4) The name(s) of the Copyright Holder(s) or the Author(s) of the Font Software shall not be used to promote, endorse or advertise any Modified Version, except to acknowledge the contribution(s) of the Copyright Holder(s) and the Author(s) or with their explicit written permission.
- 5) The Font Software, modified or unmodified, in part or in whole, must be distributed entirely under this license, and must not be distributed under any other license. The requirement for fonts to remain under this license does not apply to any document created using the Font Software.

TERMINATION

This license becomes null and void if any of the above conditions are not met.

DISCLAIMER

THE FONT SOFTWARE IS PROVIDED "AS IS", WITHOUT WARRANTY OF ANY KIND, EXPRESS OR IMPLIED, INCLUDING BUT NOT LIMITED TO ANY WARRANTIES OF MERCHANTABILITY, FITNESS FOR A PARTICULAR PURPOSE AND NONINFRINGEMENT OF COPYRIGHT, PATENT, TRADEMARK, OR OTHER RIGHT. IN NO EVENT SHALL THE COPYRIGHT HOLDER BE LIABLE FOR ANY CLAIM, DAMAGES OR OTHER LIABILITY, INCLUDING ANY GENERAL, SPECIAL, INDIRECT, INCIDENTAL, OR CONSEQUENTIAL DAMAGES, WHETHER IN AN ACTION OF CONTRACT, TORT OR OTHERWISE, ARISING FROM, OUT OF THE USE OR INABILITY TO USE THE FONT SOFTWARE OR FROM OTHER DEALINGS IN THE FONT SOFTWARE.