



imagePRESS
imageRUNNER ADVANCE DX
imageRUNNER ADVANCE

**User's Guide (Notification of
New and Enhanced Functions)**

Contents

Read This First	2
Changes to Functions	6
Support for Universal Print (Ver. 3.11-)	7
Configuring the Universal Print User Settings	11
Addition of New Features to the Visual Message Function (Ver. 3.11-)	14
Changes to the <Home> Screen	16
Changes to Destination Registration	18
Changes to Server Information Registration	19
Changes to Networks	20
Changes to User Authentication	23
Changes to the Secondary Transfer Voltage (Ver. 3.12-)	24
Changes to the Eco (Staple-Free) mode (Ver. 3.12-)	28
Changes Related to Clearing Paper Jams	30
Changes to System Specifications	34
Changes to Settings/Registration	42
New Items	43
<Default Paper Feed Source>(Ver. 3.12-)	44
<Pure Black Graphics>(Ver. 3.12-)	45
<Adj. Lead Edge Sec. Transfer Volt.>/<Correct Tail End Toner Application> (Ver. 3.12-)	47
<Allow Jobs to Be Performed from Mobile Device> (Ver. 3.12-)	50
<Change PIN> (Ver. 3.13-)	51
Changed Items	52
Changes to Messages	56
Other Changes to the User's Guide	58
Changes for Each Version	72
Changes from Ver. 3.12 to Ver. 3.13	73
Changes from Ver. 3.11 to Ver. 3.12	75
Changes from Ver. 3.10 to Ver. 3.11	77
Changes in Ver. 3.10 and earlier	78
Third Party Software	80

Read This First

Read This First 2


Read This First

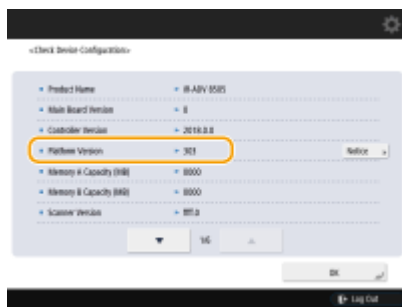
85EA-000

This manual should be read in conjunction with the User's Guide. This manual describes added functions and other changes for Platform Version Ver. 3.11 or later.

■ Checking The Version

Depending on the model, you may not be able to apply the latest Platform Version. Use the procedure below to check the version before reading this manual.

- 1 Press  (Counter/Device Information) or the [Counter/Device Information] key.
- 2 Press <Device Info./Other> ▶ <Check Device Configuration>.
- 3 Check the version in <Platform Version>.



■ How to Read This Manual

This section describes the screens, icons, and other items used in this manual. Markings and screens not explained here are as described in the User's Guide.

NOTE

- Depending on your model and options, some of the functions described may not apply to your machine.

Screen

Screens used in this manual may differ from the screen display of your machine depending on the model, optional equipment, and version.

Supported Versions

The icons below indicate supported versions in the explanations of additions or changes resulting from firmware updates.

3.13-

Supported in Platform Version Ver. 3.13 or later

3.12-

Supported in Platform Version Ver. 3.12 or later

3.11-

Supported in Platform Version Ver. 3.11 or later

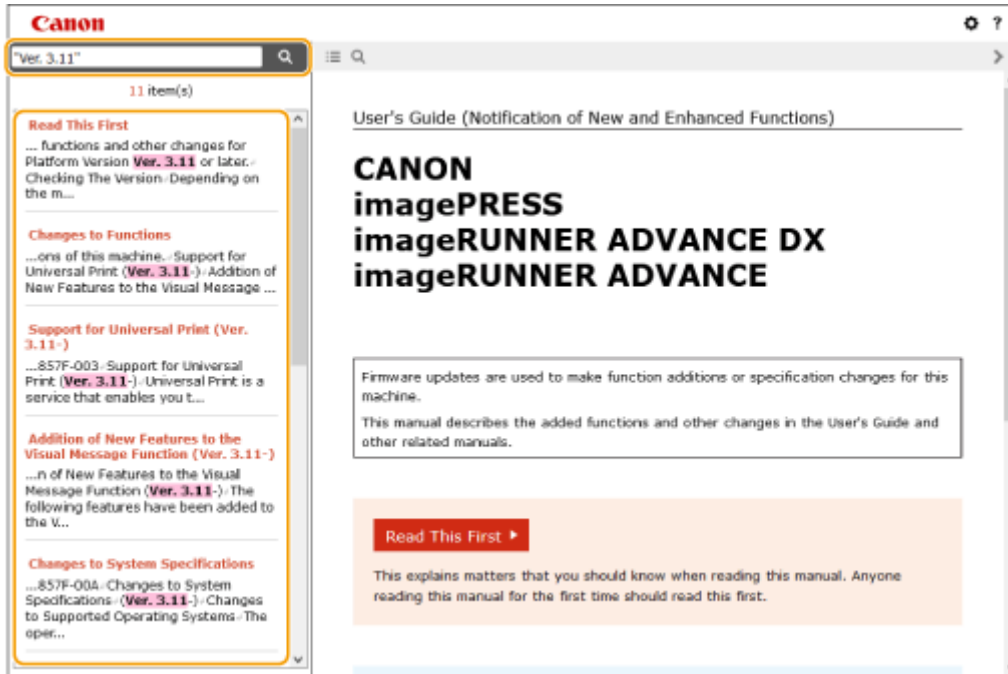
Searching Listings for Supported Versions

Search list page

- Allows you to search pages that list all the changes in each version. ▶ **Changes for Each Version(P. 72)** .


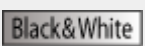

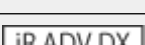
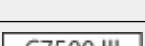
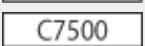

Search by keyword

- Searching by entering the version as a keyword (e.g. "Ver. 3.11") displays a list of pages that include that keyword. You can then search through the listed pages.



Supported Models

The icons below indicate information that is limited to certain supported models. Some machines may not be available, depending on the country or region.

	All color models
	All black and white models
	All imageRUNNER ADVANCE models
	All imageRUNNER ADVANCE DX models
 ,  , etc.	Icons indicating individual products Example)  : imageRUNNER ADVANCE C7580i III / C7570i III / C7565i III

NOTE

- Where the above icons are not shown, all models are supported.

■ Configuring How this Manual is Displayed

You can resize the text of this manual and switch the screen layout to suit the machine on which it is displayed.

NOTE

- If you are unable to view the manual in PDF format, download Adobe Acrobat Reader from the Adobe Systems website (<https://get.adobe.com/reader/>).

■ Trademarks

Mopria®, the Mopria® Logo and the Mopria® Alliance logo are registered trademarks and service marks of Mopria Alliance, Inc. in the United States and other countries. Unauthorized use is strictly prohibited.

Google Cloud Print, Google Chrome, Chrome OS, and Chromebook are trademarks of Google LCC.

All other trademarks are the property of their respective owners.

Other product and company names herein may be the trademarks of their respective owners.

Changes to Functions

Changes to Functions	6
Support for Universal Print (Ver. 3.11-)	7
Configuring the Universal Print User Settings	11
Addition of New Features to the Visual Message Function (Ver. 3.11-)	14
Changes to the <Home> Screen	16
Changes to Destination Registration	18
Changes to Server Information Registration	19
Changes to Networks	20
Changes to User Authentication	23
Changes to the Secondary Transfer Voltage (Ver. 3.12-)	24
Changes to the Eco (Staple-Free) mode (Ver. 3.12-)	28
Changes Related to Clearing Paper Jams	30
Changes to System Specifications	34

Changes to Functions

85EA-002

This section describes the changes that apply to the functions of this machine.

- ▶ **Support for Universal Print (Ver. 3.11-)(P. 7)**
- ▶ **Addition of New Features to the Visual Message Function (Ver. 3.11-)(P. 14)**
- ▶ **Changes to the <Home> Screen(P. 16)**
- ▶ **Changes to Destination Registration(P. 18)**
- ▶ **Changes to Server Information Registration(P. 19)**
- ▶ **Changes to Networks(P. 20)**
- ▶ **Changes to User Authentication(P. 23)**
- ▶ **Changes to the Secondary Transfer Voltage (Ver. 3.12-)(P. 24)**
- ▶ **Changes to the Eco (Staple-Free) mode (Ver. 3.12-)(P. 28)**
- ▶ **Changes Related to Clearing Paper Jams(P. 30)**
- ▶ **Changes to System Specifications(P. 34)**

Support for Universal Print 3.11-

85EA-003

Universal Print is a service that enables you to print documents via the Microsoft cloud. Universal Print drivers are included as a standard feature in Windows 10, so there is no need to install printer drivers for each computer. This also eliminates the need for printer servers, thereby enabling cost reductions and reducing the workload on network administrators.

Conditions of Use

To use Universal Print, you must first register as a Microsoft 365 service user and use the Azure Active Directory Service.

Required Settings

Administrator settings

Use the Remote UI to register this machine in Azure Active Directory. [▶Registering This Machine in Azure Active Directory\(P. 8\)](#)

User settings

Configure your computer so that Universal Print can be used. [▶Configuring a Printer Registered in Azure Active Directory on the Computer\(P. 10\)](#)

NOTE

When a proxy server is used

- To use Universal Print via a proxy server, you must also configure the proxy settings on your computer.

Associating Users and Universal Print Jobs

You can associate Universal Print jobs with users authenticated through User Authentication. You can still use Universal Print without configuring these settings. [▶Configuring the Universal Print User Settings\(P. 11\)](#)

Printing with Universal Print

See the Microsoft website for information on printing with Universal Print.

IMPORTANT

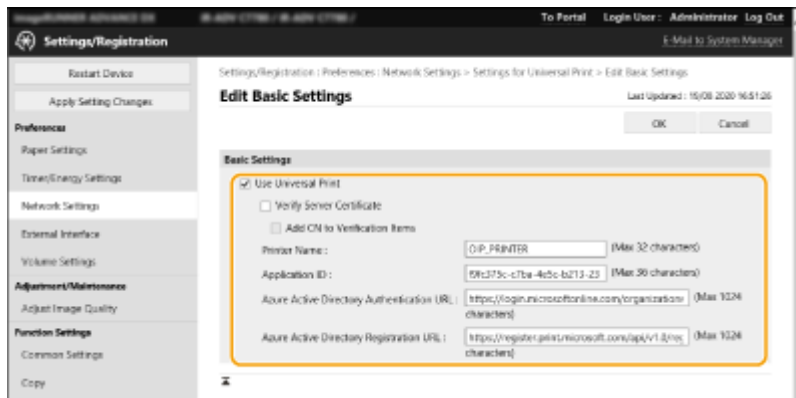
- In some operating systems, print errors or problems with the print results may occur. See Universal Print Troubleshooting on the Microsoft website for information on the compatibility of your operating system.

NOTE

- Universal Print cannot be used with an imagePASS connection.
- Universal Print cannot be used with communication over a sub line.
- If Forced Hold printing is enabled, Universal Print jobs will run as specified in the <Forced Hold> settings.

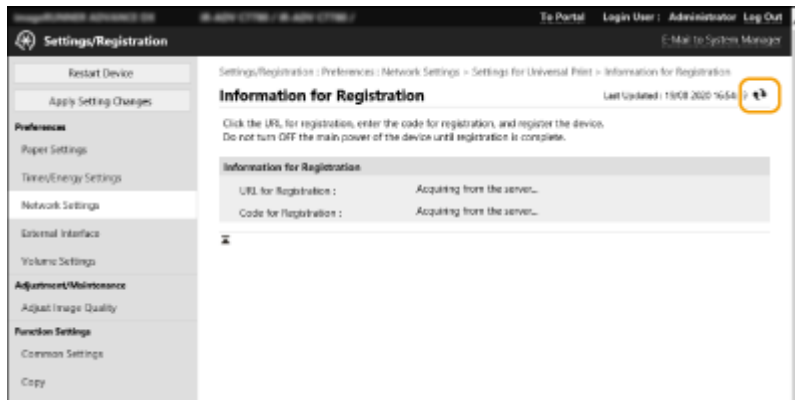
Registering This Machine in Azure Active Directory

- 1 Start the Remote UI.
- 2 Click [Settings/Registration] on the portal page.
- 3 Click [Network Settings] ► [Settings for Universal Print].
- 4 Click [Edit...] for [Basic Settings].
- 5 Select the [Use Universal Print from Microsoft] checkbox and enter the printer name in the [Printer Name] field.



- To verify the server certificate sent from the server, select the [Verify Server Certificate] checkbox.
- To add CN (Common Name) to the items to be verified, select the [Add CN to Verification Items] checkbox.
- Change the [Application ID], [Azure Active Directory Authentication URL] or [Azure Active Directory Registration URL] settings according to your cloud environment.

- 6 Click [OK].
- 7 Click [Register...] in [Registration Status].
- 8 Wait a few seconds, and then click ↻.



9 Click the URL link displayed for [URL for Registration].

10 Follow the instructions on the screen to register the machine.

11 Wait a few minutes, and then click ↻ in the Remote UI screen.

⇒ Once registration is completed, [Registered] appears in [Registration Status].

12 View the Universal Print management screen of Azure Active Directory in your web browser.

13 Select the registered machine and click [Share Printer].

- To change the name displayed on the computer, enter the new name in [Printer Share Name], and then click [Share Printer].

⇒ [Printer shared.] appears at the top right of the screen.

14 Click [Members], and then click [Add].

15 Select the members and groups who will use the registered printer from the list.

- The selected members and groups will be able to use the printer.

■ To Delete a Registered Printer

1 Start the Remote UI.

2 Click [Settings/Registration] on the portal page.

3 Click [Network Settings] ▶ [Settings for Universal Print].

- 4** Click [Registration Status] for [Unregister].
- 5** Click [OK].
- 6** View the Azure Active Directory device management screen in your web browser.
- 7** Select the model to be deleted and click [Delete].

Configuring a Printer Registered in Azure Active Directory on the Computer

- 1** Click [Start] > [Settings] > [Accounts].
- 2** Click [Access work or school] > [Connect].
- 3** Follow the on-screen instructions to sign in to your Microsoft 365 account.
- 4** Click [Home] > [Devices].
- 5** Click [Printers & scanners] > [Add a printer or scanner].
- 6** Select a registered printer from the list.

Configuring the Universal Print User Settings

85EA-004

Configure these settings if you want to manage users authenticated through User Authentication and their associated Universal Print jobs. Universal Print can still be run without configuring these settings.

- 🔗 **Set by the User(P. 11)**
- 🔗 **Set by the Administrator(P. 11)**
- 🔗 **Set by the Administrator Using a CSV File(P. 12)**

Set by the User

- 1 Start the Remote UI.**
- 2 Click [Settings/Registration] on the portal page.**
- 3 Click [User Management] ▶ [Authentication Management].**
- 4 Enter [User Name for Universal Print:] in [Information for Universal Print].**
 - In [User Name for Universal Print:], enter the email address or phone number used in the Microsoft 365 account.

Set by the Administrator

- 1 Start the Remote UI.**
- 2 Click [Settings/Registration] on the portal page.**
- 3 Click [User Management] ▶ [Authentication Management].**
- 4 Click [Edit...] for the user to be set.**

NOTE:

If the Universal Print user is not registered

- Click [Add User] and register the user information. When registering the user information, enter the [User Name for Universal Print:] in [Information for Universal Print].

- 5 Enter [User Name for Universal Print:] in [Information for Universal Print].**

- In [User Name for Universal Print:], enter the email address or phone number used in the Microsoft 365 account.

6 Click [Update].

Set by the Administrator Using a CSV File

You can associate User Authentication users with a Microsoft 365 account by editing a CSV file.

1 Start the Remote UI.

2 Click [Settings/Registration] on the portal page.

3 Click [User Management] ► [Authentication Management] ► [Settings for Universal Print].

4 Click [Start Exporting].

- If there is no user information that is associated with a Microsoft 365 account, you cannot configure the settings using a CSV file. Click [Add Association...], add the associated user and then click [Start Exporting].

5 Editing the exported CSV file

- Enter a registered user name in "mcp_uid".
- In "azureaccount_name", enter the email address or phone number used in the Microsoft 365 account.

6 Click [Import...] and specify the file edited in step 5.

7 Click [Start Importing].

NOTE

- If the authentication method is set to [Picture Login] and [User Registration Method:] is set to [Register Automatically When Job Is Received], the following information is registered as the user information for a job executed by the Microsoft 365 account called "user1@example.com".
 - Settings registered in the user database
User name: user1@example.com
 - Universal Print settings
User name: user1
Microsoft 365 account: example.com
 - Information displayed on the login screen for Picture Login
user1
example.com

Setting <Allow Use of @ in User Name> to <On> enables you to register "user1@example.com" as the user name.

- When printing, select "user1@example.com" on the control panel to log in ► select <Print> ► execute printing.

Addition of New Features to the Visual Message Function

3.11-

85EA-005

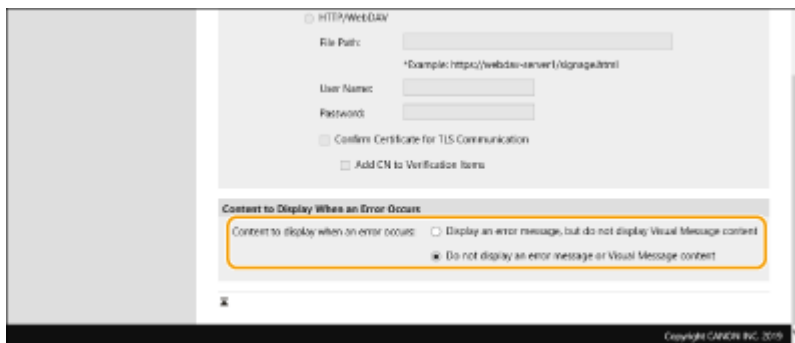
The following features have been added to the Visual Message function.

- ▶ **Hiding Error Message Screens(P. 14)**
- ▶ **Setting Exception Addresses Where a Proxy Server Is Not Used(P. 14)**

Hiding Error Message Screens

Up until now, error message screens appeared if content was not displayed for some reason. However, you can specify that error message screens not appear.

- 1 Start the Remote UI.**
- 2 Click [Settings/Registration] on the portal page.**
- 3 Click [License/Other] ▶ [Visual Message Settings] ▶ [Display Settings].**
- 4 In [Content to Display When an Error Occurs], select [Do not display an error message or Visual Message content].**



- 5 Click [OK].**

Setting Exception Addresses Where a Proxy Server Is Not Used

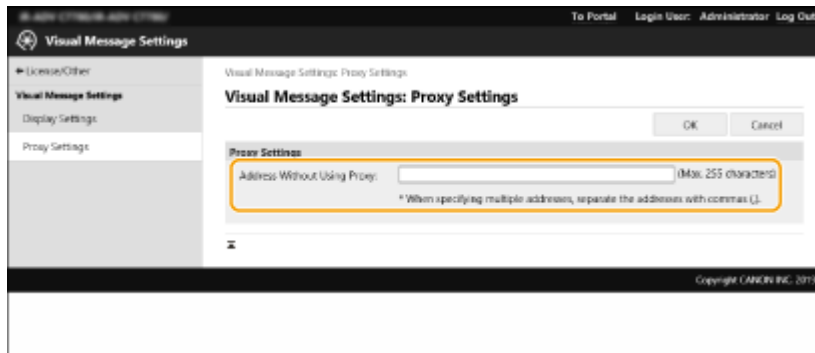
Specify the proxy settings in the Visual Message function to match the settings in <Proxy Settings>. If a proxy is set, the specified content may not appear. In this case, you can set an exception address so that the proxy server is not used.

- 1 Start the Remote UI.**

2 Click [Settings/Registration] on the portal page.

3 Click [License/Other] ► [Visual Message Settings] ► [Proxy Settings].

4 In [Address Without Using Proxy], enter the addresses for which a proxy server will not be used.



- You can specify multiple addresses separated by a comma (,).
- You can specify up to 255 characters (ASCII code only).

5 Click [OK].

Changes to the <Home> Screen

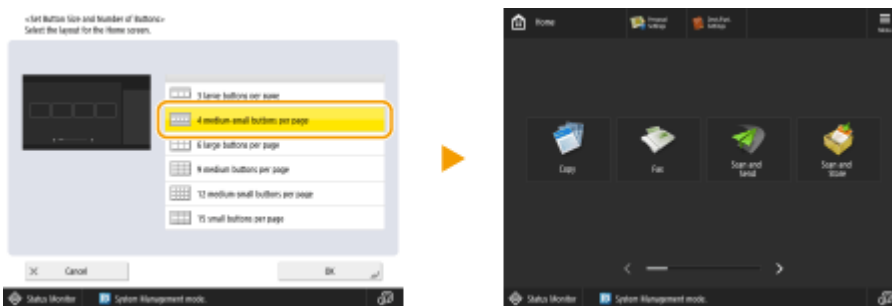
85EA-006

3.12-

C7500 III	C5500 III	C3500 III	C475 III	C356 III	C256 III
8500 III	6500 III	4500 III	715 III	615 III	525 III
iR ADV DX					
C165					

■ Addition of <4 medium-small buttons per page> in <Menu> ▶ <Home Screen Layout Settings>

More options have been added for the number and size of the buttons displayed per screen.



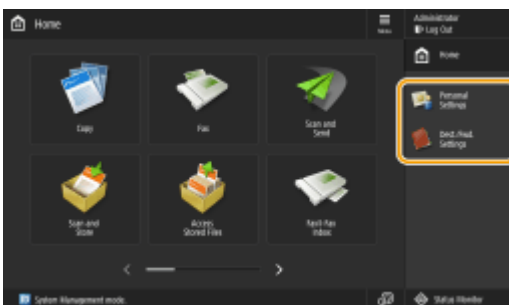
NOTE

- When you use this setting, <Comment> is no longer displayed when you register Personal Buttons/Shared Buttons.

■ Addition of Shortcut Button Displays for Functions

The shortcut buttons displayed in each function screen also appear in the <Home> screen. You can register frequently used functions to quickly access functions you frequently use without having to scroll the screen.

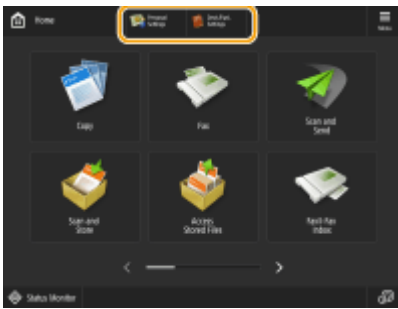
C7500 III	C5500 III	C3500 III	C475 III	C356 III	C256 III
8500 III	6500 III	4500 III	715 III	615 III	525 III
C165					



NOTE

- Shortcut buttons do not appear if the timeline is displayed in the <Home> screen.

iR ADV DX



NOTE

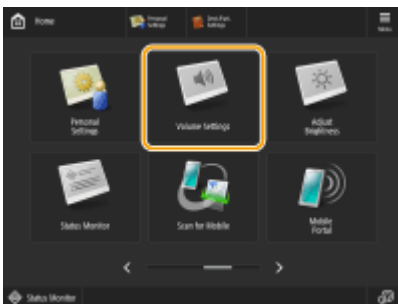
- Depending on the model, when the optional Upright Control Panel is installed, shortcut buttons do not appear when the timeline is displayed in the <Home> screen.

3.13-

iR ADV DX

■ Button Renamed on the <Home> Screen

The name of the <Adjust Volume> button on the <Home> screen has changed to <Volume Settings>.



Changes to Destination Registration

85EA-007

3.12-

■ Renaming of Items Displayed in the One-Touch Button Registration Screen

When you register a destination for a one-touch button or register a new destination, some of the items displayed in the operation panel and remote UI screen are renamed.

- **Control Panel**

Current name	New name
<One-Touch Name>	<One-Touch Button Name>

- **Remote UI**

Current name	New name
[Button Name]	[One-Touch Button Name]
[One-Touch Name]	[One-Touch Button Name]

Changes to Server Information Registration

85EA-008

3.12-

■ Support for Specifying Domains in IP Addresses When Configuring Active Directory Server Authentication

When you are specifying the Active Directory domain manually, you can now specify an IPv4 address instead of a host name. Access the Active Directory server by entering the host name or IPv4 address.

The screenshot displays the 'Add Domain' configuration page within the 'Authentication Management' interface. The page title is 'Add Domain' and the breadcrumb trail is 'Authentication Management > Preferences > Server Settings > Add Server Settings > Active Directory Management > Add Domain'. The page includes a 'Test Connection' button, an 'Add' button, and a 'Cancel' button. The configuration fields are as follows:

- Domain Name: (Maximum 64 Characters)
- NetBIOS Name: (Maximum 15 Characters)
- Primary Host Name (or IP Address): (Maximum 64 Characters) - This field is highlighted with a red box.
- Secondary Host Name or IP Address: (Maximum 64 Characters)
- User Name: (Maximum 20 Characters)
- Password: (Maximum 127 Characters)
- Attribute to Set for Login Account: Login Name

Changes to Networks

3.12-

■ Support for Using Color Network ScanGear 2 via Sub Line

Previously you could only use "Color Network ScanGear 2" on the main line, but now you can use it on a sub line also.

3.13-

■ Support for WPA3 Security Type via Wireless LAN Connection

The wireless LAN function of this machine can now support WPA3-SAE (AES-CCMP) and WPA3-EAP (AES-CCMP).

IMPORTANT

- Depending on when you purchased "Connection Kit for Bluetooth LE" installed on the machine, you may not be able to use WPA-3-SAE/WPA3-EAP.



NOTE

Security settings

- If the wireless connection is set up by selecting a wireless router, WPA3-SAE encryption method is set to <Auto> (AES-CCMP or TKIP). If you want to select <AES-CCMP> for WPA3-SAE encryption, set up the connection in <Enter Manually>. **▶When Setting Up the Wireless LAN Connection by Specifying Detailed Settings(P. 21)**
- If the security standard for your wireless LAN router is WPA3-EAP, the encryption method is set to AES-CCMP. Also, specify the IEEE 802.1X authentication settings for the machine before connecting to the wireless LAN.

When Setting Up a Connection by Selecting a WPA3 Compatible Wireless Router

You can search the wireless routers available for connection and select one from the display of the machine. If the security standard for your wireless LAN router is WPA3-SAE, enter the encryption key for the network key. Confirm and write down in advance information regarding your SSID, network key, security standard, or authentication/encryption method, etc.

- 1 Press  /  (Settings/Registration).
- 2 Press <Preferences> ▶ <Network> ▶ <Wireless LAN> ▶ <Wireless LAN Settings> ▶ <Other (Set Manually)>.
- 3 Press <Select Access Point>.
 - The machine starts searching for available wireless routers.

4 Select a wireless router, and connect to it.

■If the security setting of your wireless LAN router is WPA3-SAE



- 1 Select the wireless LAN router to use, and press <OK>.
- 2 Press <Encryption Key>, and enter the network key.
- 3 Press <OK>.
 - ▢▢▢ When the configuration is complete, the screen <Connected.> will be displayed.

■If the security setting of your wireless LAN router is WPA3-EAP

- 1 Select the wireless LAN router to use, and press <OK>.
 - ▢▢▢ When the configuration is complete, the screen <Connected.> will be displayed.

When Setting Up the Wireless LAN Connection by Specifying Detailed Settings

If you want to specify the security settings in detail or cannot establish the wireless connection using the other procedures, manually enter all the required information for the wireless LAN connection. Confirm and write down in advance information regarding your SSID, network key, security standard, or authentication/encryption method, etc.

- 1 Press  /  (Settings/Registration).
- 2 Press <Preferences> ▶ <Network> ▶ <Wireless LAN> ▶ <Wireless LAN Settings> ▶ <Other (Set Manually)>.
- 3 Press <Enter Manually>.
- 4 Press <SSID>, and enter the SSID that you have checked.
- 5 Specify the security settings in <Security Settings>.

■Using WPA3-SAE

- 1 Press <WPA2-PSK/WPA3-SAE> or <WPA3-SAE>.
- 2 Select an encryption method.
 - To set the machine to automatically select AES-CCMP or TKIP to match the setting of the wireless router, press <Auto>.
- 3 Press <Encryption Key>, and enter the network key that you have checked.
- 4 Press <OK>.

■ Using WPA3-EAP

- 1 Press <WPA/WPA2-EAP>.
- 2 Press <OK>.

6 Press <OK>.

- ▣ When the wireless LAN router is detected and the configuration is complete, the screen <Connected.> will be displayed.

Changes to User Authentication

85EA-00A

3.13-

■ Adding an Item to Force Users to Change Their Passwords at Initial Login to the Information of the User to Be Registered in the Local Device

It is now possible to force users to change their password the first time they log in. Select this check box to force registered users to change their passwords. Once a user has changed their password, the check box is cleared automatically.

The screenshot shows the 'Add User' form in the Authentication Management interface. The form is divided into two main sections: 'Authentication Information' and 'User Information'. In the 'Authentication Information' section, the 'Change Password at Next Login' checkbox is checked and highlighted with a yellow border. Other fields include 'User Name' (Maximum 32 Characters), 'Password' (Maximum 32 Characters), and 'Cost/Time'. In the 'User Information' section, there are fields for 'Displayed As' (Maximum 32 Characters), 'E-Mail Address' (Maximum 256 Characters), and an 'Icon' field with a 'Icon Settings...' button.

Changes to the Secondary Transfer Voltage 3.12-

85EA-00C

C5800

C3800

Images printed on registered custom paper may be faint or uneven compared to images printed on plain paper. If this occurs, you can now scan the printed chart and change the secondary transfer voltage (the voltage that transfers toner to the paper).

▶ **Configuring/Printing the Chart**(P. 24)


▶ **Adjusting the Secondary Transfer Voltage**(P. 25)

NOTE

- Adjustments made in <Adjust Secondary Transfer Voltage> may affect the <Adjust Image Position> setting. Readjust <Adjust Image Position> as needed.

Configuring/Printing the Chart

To adjust the secondary transfer voltage, first print the chart page.

- 1** Press  (Settings/Registration).
 - 2** Press <Preferences> ▶ <Paper Settings> ▶ <Paper Type Management Settings>.
 - 3** Select the registered custom paper.
 - 4** Press <Details/Edit>.
 - 5** Press <Change> in <Adjust Secondary Transfer Voltage>.
 - 6** Select the secondary transfer voltage adjustment method.
 - Press <Do Not Use Scanner> to view the printed chart, identify the optimal patch, and make manual adjustments.
 - Press <Use Scanner> to scan the printed chart and have the optimal patch identified and adjustments made automatically.
- NOTE:**
- If you selected <Use Scanner>, the usable paper sizes are A3, A4, 11" x 17", and LTR.
- 7** Press <Chart Print Settings>.

8 Specify the settings for the chart to be printed and press <Next>.



a <Chart Print Type>

Select <For Fine Adjustment> to make fine adjustments or <For Coarse Adjustment> if major adjustment is required.

- If you selected <For Fine Adjustment>, a chart is printed with adjustments in increments of ± 1 .
- If you selected <For Coarse Adjustment>, a chart is printed with adjustments in increments based on the status of the machine.

b <Print Side>

Select the side on which the secondary transfer voltage is to be adjusted.

NOTE:

- In any of the following situations, select <Front Side Only>.
 - If <2nd Side of 2-Sided Page> is set to <On> for a custom paper.
 - If you loaded paper in the multi-purpose tray and selected <2nd Side of 2-Sided Page> in <Paper Type>.
- If you selected <2-Sided>, see "Introduction (About the Machine)" ► "Available Paper" in the "User's Guide" for the papers that can be used for charts.

9 Select the paper source in which the custom paper is loaded ► press <OK>.

10 Press <Chart Print> or <Chart Print/Scan>.

- If you selected <Use Scanner> in step 2, press <Start Printing>.
- ▢► The chart is printed.

Adjusting the Secondary Transfer Voltage

Use the printed chart to adjust the secondary transfer voltage. The procedure differs depending on the secondary transfer voltage adjustment method selected in step 2 of "◉Configuring/Printing the Chart(P. 24) ."

◉If you selected <Do Not Use Scanner>(P. 25)

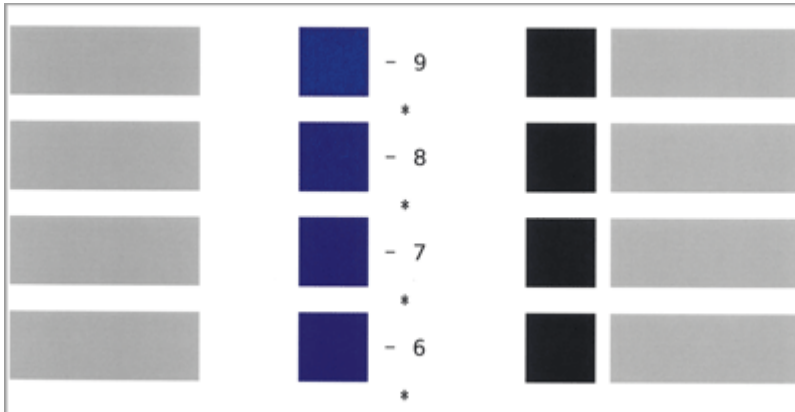
◉If you selected <Use Scanner>(P. 27)

■ If you selected <Do Not Use Scanner>

Visually identify the optimal patch in the chart and adjust the secondary transfer voltage.

1 Check the optimal patch in the printed chart.

- With the current settings, chart numbers are printed in magenta.



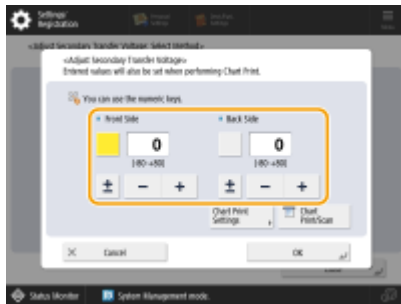
- Check the chart as you sequentially increase from negative values to positive values. When you reach a point where the density within the patch appears uniform (-8 in the example), compare it with a patch with a value that is higher by 2 (-7 and -6 in the example) and select the value you consider to be optimal.

NOTE:

- A side that has a single asterisk (*) printed next to the chart number is the front side.
- Where there is no discernible difference among the selected numbers, choose the middle of the three values (-7 in the example).

2 In the <Adjust Secondary Transfer Voltage> screen, enter the number confirmed in the chart.

- Select <Front Side> or <Back Side> and enter the number using <-> or <+>.



NOTE:

- In either of the following situations, adjust the value for <Back Side>.
 - If <2nd Side of 2-Sided Page> is set to <On> for a custom paper.
 - If you loaded paper in the multi-purpose tray and selected <2nd Side of 2-Sided Page> in <Paper Type>.

3 Press <OK>.

■ If you selected <Use Scanner>

Scan the chart on the scanner to have the optimal patch identified automatically.

1 Place the chart on the platen glass.

- Place the chart while following the on-screen instructions.

2 Close the feeder and press <Start Scanning>.

⇒ The chart is scanned.

- If the chart was printed on both sides of the paper, place the other side of the chart on the platen glass and press <Start Scanning> again.

NOTE:

- You may not be able to scan special paper such as colored paper, transparencies, pre-punched paper, or labels. To scan special paper, select <Do Not Use Scanner> and make the adjustment manually.

3 Open the feeder and remove the chart.

4 Press <OK>.

Changes to the Eco (Staple-Free) mode 3.12-

85EA-00E

■ Changing the Number of Sheets in Eco (Staple-Free) Mode

The number of sheets in the Eco (Staple-Free) mode has changed as shown below.

C5800

Inner Finisher-L

Staple	<p style="text-align: center;">Max. Stapling Capacity*</p> <p>Staple (Eco)</p> <ul style="list-style-type: none"> • A3, B4, A4, B5, 11" x 17", LTR, 8K, and 16K: <ul style="list-style-type: none"> 10 sheets (52 g/m² to 64 g/m²) 8 sheets (65 g/m² to 81.4 g/m²) 6 sheets (82 g/m² to 105 g/m²)
---------------	---

* When the standard staple cartridge is attached. (The maximum stapling capacity may vary, depending on the paper type and weight.)

Staple Finisher-AB / Booklet Finisher-AB

Staple	<p style="text-align: center;">Max. Stapling Capacity*</p> <p>Staple (Eco)</p> <ul style="list-style-type: none"> • A3, A4, 11" x 17", LTR, 8K, and 16K: <ul style="list-style-type: none"> 10 sheets (52 g/m² to 64 g/m²) 8 sheets (65 g/m² to 81.4 g/m²) 6 sheets (82 g/m² to 105 g/m²)
---------------	---

* When the standard staple cartridge is attached. (The maximum stapling capacity may vary, depending on the paper type and weight.)

C3800

Inner Finisher-L

Staple	<p style="text-align: center;">Max. Stapling Capacity*</p> <p>Staple (Eco):</p> <ul style="list-style-type: none"> • All sizes: <ul style="list-style-type: none"> 10 sheets (52 g/m² to 64 g/m²) 8 sheets (65 g/m² to 81.4 g/m²) 6 sheets (82 g/m² to 105 g/m²)
---------------	--

* When the standard staple cartridge is attached. (The maximum stapling capacity may vary, depending on the paper type and weight.)

Staple Finisher-AE / Booklet Finisher-AE

Staple	<p style="text-align: center;">Max. Stapling Capacity*</p> <p>Staple (Eco):</p> <ul style="list-style-type: none">10 sheets (52 g/m² to 64 g/m²)8 sheets (65 g/m² to 81.4 g/m²)6 sheets (82 g/m² to 105 g/m²)
---------------	---

* When the standard staple cartridge is attached. (The maximum stapling capacity may vary, depending on the paper type and weight.)

Changes Related to Clearing Paper Jams

85EA-00F

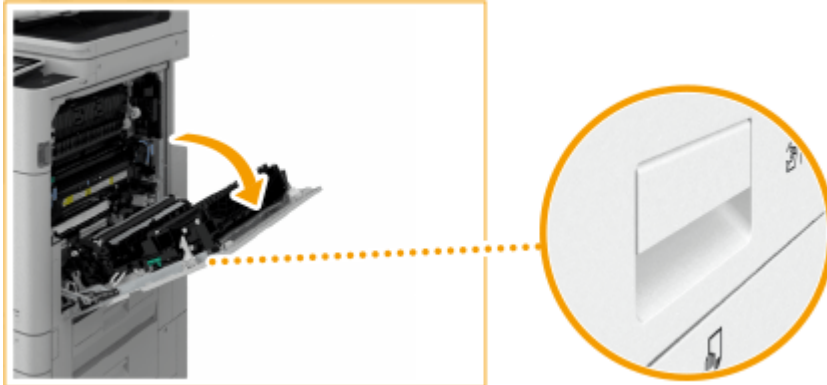
3.12-

C5800

C3800

If a paper jam occurs inside the main unit when the inner finisher is installed, there is an additional process for clearing the paper jam. This describes the process, using images of the C5800 series as examples.

1 Open the right cover of the main unit.

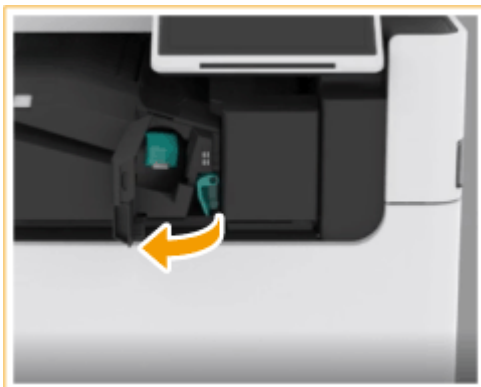


2 Check whether paper is jammed in the output unit.

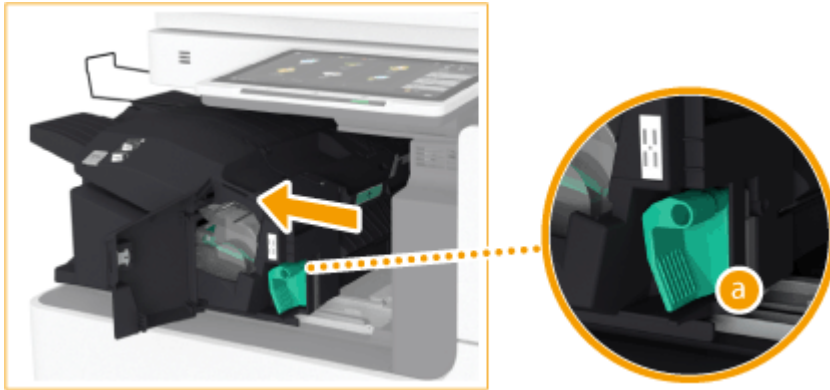
- If paper is jammed, gently pull it out in the direction of the arrow.



3 Open the left cover of the finisher.



- 4 Hold the lever (a), and slide the inner finisher to the left.



- 5 Check whether paper is jammed in the inner finisher.

- 1 Lift up the guide at the entrance.



- 2 If paper is jammed, gently pull it out in the direction of the arrow.



- 3 Return the guide to its original position.

■When the Puncher Unit is attached:

- 1 Open the front cover of the puncher unit.



- 2** Turn the green knob to feed the jammed paper to the outlet of the puncher unit.

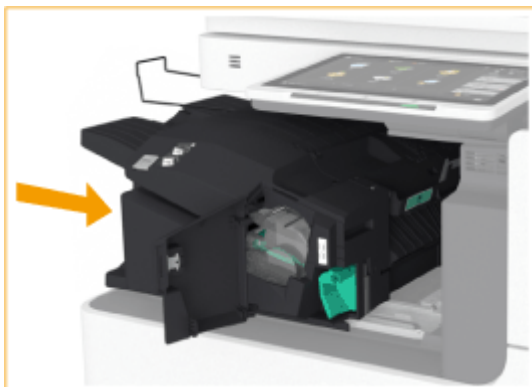


- 3** If paper comes out of the outlet of the puncher unit, gently pull the paper out in the direction of the arrow.



- 4** Close the front cover of the puncher unit.

- 6** Return the inner finisher to its original position.



7 Close the left cover of the finisher.

8 Gently close the right cover of the main unit until they click.

- Continue following the instructions on the screen to proceed with the interrupted operation or continue clearing paper jams.

Changes to System Specifications

85EA-00H

3.11-

■ Changes to Supported Operating Systems

The operating systems (OS) that support the various functions have changed as shown below.

Pull Scan

Compatible OS	Windows 8.1/Windows 10/Windows Server 2012/Windows Server 2012 R2/Windows Server 2016
----------------------	---

UFR II Printer Function

Compatible OS	<ul style="list-style-type: none"> • Windows 8.1/10/Server 2012/Server 2012 R2/Server 2016/Server 2019 • Mac OS X (10.10 or later)
----------------------	--

PCL Printer Function

Compatible OS	Windows 8.1/10/Server 2012/Server 2012 R2/Server 2016/Server 2019
----------------------	---

PS Printer Function

Compatible OS	Driver <ul style="list-style-type: none"> • Windows 8.1/10/Server 2012/Server 2012 R2/Server 2016/Server 2019 • Mac OS X (10.10 or later)
	PPD <ul style="list-style-type: none"> • Windows 8.1/10 • Mac OS X (10.9 or later)

When an Active Directory Server Is Specified as an Authentication Server

Software (operating system)	Windows Server 2012* ¹ /Windows Server 2012 R2* ¹ /Windows Server 2016* ¹ /Windows Server 2019* ¹
------------------------------------	---

*1 Users cannot log in with Active Directory authentication if Kerberos Armoring is enabled for KDC-related policies (group policies). Make sure to disable Kerberos Armoring.

File Servers

File servers available as destinations for file transmission	FTP <ul style="list-style-type: none"> • Windows Server 2012: Internet Information Services 8.0 • Windows 8.1/Server 2012 R2: Internet Information Services 8.5 • Windows 10/Server 2016/Server 2019: Internet Information Services 10
---	---

	<ul style="list-style-type: none"> • Cent OS 7 Windows (SMB) • Windows 8.1 • Windows 10 • Windows Server 2012 • Windows Server 2012 R2 • Windows Server 2016 • Windows Server 2019 • Mac OS X 10.13 and later • Cent OS 7 WebDAV • Windows Server 2012: Internet Information Services 8.0 • Windows 8.1/Server 2012 R2: Internet Information Services 8.5 • Windows 10/Server 2016/Server 2019: Internet Information Services 10 • Mac OS X 10.13 and later • Cent OS 7
--	--

LDAP Servers

Types of LDAP servers	<ul style="list-style-type: none"> • Windows Server 2012 with Active Directory • Windows Server 2012 R2 with Active Directory • Windows Server 2016 with Active Directory • Windows Server 2019 with Active Directory
------------------------------	---

3.12-

- ▶ **Changes to Send Functions(P. 35)**
- ▶ **Changes to Printer Functions(P. 36)**
- ▶ **Changes to Storage Space Functions(P. 36)**
- ▶ **Changes to System Environment(P. 37)**
- ▶ **Changes to Network Environment(P. 38)**

■ Changes to Send Functions

The interfaces have changed as shown below.

Push Scan

Interface	1000 Base-T/100 Base-TX/10 Base-T (IEEE 802.3 compliant), Wi-Fi (IEEE 802.11b/g/n)
------------------	--

Pull Scan

Interface	USB2.0High-Speed, 1000Base-T/100Base-TX/10Base-T (IEEE 802.3 compliant), Wi-Fi (IEEE 802.11b/g/n)
------------------	---

■ Changes to Printer Functions

The operating systems (OS) that support the printer functions and interfaces have changed as shown below.

UFR II Printer Function

Compatible OS	<ul style="list-style-type: none"> Windows 8.1/10/Server 2012/Server 2012 R2/Server 2016/Server 2019 Mac OS X (10.11 or later)
Interface	USB2.0High-Speed, 1000Base-T/100Base-TX/10Base-T (IEEE 802.3 compliant), Wi-Fi (IEEE 802.11b/g/n)

PCL Printer Function

Interface	USB2.0High-Speed, 1000Base-T/100Base-TX/10Base-T (IEEE 802.3 compliant), Wi-Fi (IEEE 802.11b/g/n)
------------------	---

PS Printer Function

Compatible OS	<p>Driver</p> <ul style="list-style-type: none"> Windows 8.1/10/Server 2012/Server 2012 R2/Server 2016/Server 2019 Mac OS X (10.11 or later) <p>PPD</p> <ul style="list-style-type: none"> Windows 8.1/10 Mac OS X (10.10 or later)
Interface	USB2.0High-Speed, 1000Base-T/100Base-TX/10Base-T (IEEE 802.3 compliant), Wi-Fi (IEEE 802.11b/g/n)

■ Changes to Storage Space Functions

The Mail Box capacities have been changed as shown below.

C7500 III	C7500	C5500 III	C5500
C7700	C5700		
C165			

Mail Box

Storage Capacity	2,000 files or 10,000 pages (standard) / 15,000 pages (maximum)*1
-------------------------	---

*1 Includes documents stored in the Fax/I-Fax Inbox and Hold Queue. However, these numbers may vary depending on the remaining storage capacity.

C3500 III	C3500
C3700	

Mail Box

Storage Capacity	2,000 files or 10,000 pages (standard) / 15,000 pages (maximum)*1
-------------------------	---

*1 Includes documents stored in the Fax/I-Fax Inbox. However, these numbers may vary depending on the remaining storage capacity.

C475 III	C356 III	C256 III	C356	C256	C355	C255
C477	C357	C257				

Mail Box

Storage Capacity	2,000 files or 10,000 pages*1
-------------------------	-------------------------------

*1 Includes documents stored in the Fax/I-Fax Inbox. However, these numbers may vary depending on the remaining storage capacity.

■ Changes to System Environment

The operating systems (OS) that support the various functions have changed as shown below.

Remote UI

System requirements for the Remote UI *1	<p>Windows</p> <ul style="list-style-type: none"> • Internet Explorer 11 • Microsoft Edge • Google Chrome <p>Mac OS</p> <ul style="list-style-type: none"> • Safari 11 or later • Google Chrome
---	--

*1 Before changing the settings of the machine, set your Web browser to enable all cookies and use JavaScript.

File Servers

File servers available as destinations for file transmission	<p>FTP</p> <ul style="list-style-type: none"> • Windows Server 2012: Internet Information Services 8.0 • Windows 8.1/Server 2012 R2: Internet Information Services 8.5 • Windows 10/Server 2016/Server 2019: Internet Information Services 10 • Cent OS 7 <p>Windows (SMB)</p> <ul style="list-style-type: none"> • Windows 8.1 • Windows 10 • Windows Server 2012 • Windows Server 2012 R2 • Windows Server 2016 • Windows Server 2019
---	--

	<ul style="list-style-type: none"> • Mac OS X 10.13 • Mac OS X 10.14 • Mac OS X 10.15 • Cent OS 7 <p>WebDAV</p> <ul style="list-style-type: none"> • Windows Server 2012: Internet Information Services 8.0 • Windows 8.1/Server 2012 R2: Internet Information Services 8.5 • Windows 10/Server 2016/Server 2019: Internet Information Services 10 • Mac OS X 10.13 • Mac OS X 10.14 • Mac OS X 10.15 • Cent OS 7
--	--

■ Changes to Network Environment

The supported protocols for Wired LAN have been changed as shown below.

Wired LAN Specifications

Protocol Supported	<p>TCP/IP</p> <ul style="list-style-type: none"> • Frame type: Ethernet II • Print applications: LPD/Raw/IPP/IPPS/FTP/WSD/Mopria/AirPrint/Windows 10 Mobile Print/Universal Print <p>AppleTalk</p> <ul style="list-style-type: none"> • Frame type: Ethernet SNAP • Print application: PAP (Printer Access Protocol)
---------------------------	--

3.13-

- ▶ Changes to Supported Operating Systems(P. 38)
- ▶ Changes to System Environment(P. 39)

■ Changes to Supported Operating Systems

The operating systems (OS) that support the various functions have changed as shown below.

Pull Scan

Compatible OS	Windows 8.1/Windows 10/Windows Server 2012/Windows Server 2012 R2/Windows Server 2016/Windows Server 2019
----------------------	---

UFR II Printer Function

Compatible OS	<ul style="list-style-type: none"> • Windows 8.1/10/11/Server 2012/Server 2012 R2/Server 2016/Server 2019/Server 2022 • Mac OS X (10.11 or later)
----------------------	---

PCL Printer Function

Compatible OS	Windows 8.1/10/11/Server 2012/Server 2012 R2/Server 2016/Server 2019/Server 2022
----------------------	--

PS Printer Function

Compatible OS	Driver <ul style="list-style-type: none"> Windows 8.1/10/11/Server 2012/Server 2012 R2/Server 2016/Server 2019/Server 2022 Mac OS X (10.11 or later)
	PPD <ul style="list-style-type: none"> Windows 8.1/10/11 Mac OS X (10.10 or later*1)

C3800

*1 Compatible with version 10.11 or later

■ Changes to System Environment

The operating systems (OS) that support the various functions have changed as shown below.

Server Software

Compatible mail forwarding server software	<ul style="list-style-type: none"> Microsoft Exchange Server 2013 Microsoft Exchange Server 2016 Microsoft Exchange Server 2019 Sendmail 8.15.2
Compatible mail receiving server software	<ul style="list-style-type: none"> Microsoft Exchange Server 2013 Microsoft Exchange Server 2016 Microsoft Exchange Server 2019 Qpopper 4.1.0

File Servers

File servers available as destinations for file transmission	FTP <ul style="list-style-type: none"> Windows Server 2012: Internet Information Services 8.0 Windows 8.1/Server 2012 R2: Internet Information Services 8.5 Windows 10/11/Server 2016/Server 2019/Server 2022: Internet Information Services 10 Cent OS Stream 8
	Windows (SMB) <ul style="list-style-type: none"> Windows 8.1 Windows 10 Windows 11 Windows Server 2012 Windows Server 2012 R2 Windows Server 2016

Changes to Functions

	<ul style="list-style-type: none">• Windows Server 2019• Windows Server 2022• Mac OS X 10.15• Mac OS X 11• Mac OS X 12• Cent OS Stream 8 <p>WebDAV</p> <ul style="list-style-type: none">• Windows Server 2012: Internet Information Services 8.0• Windows 8.1/Server 2012 R2: Internet Information Services 8.5• Windows 10/11/Server 2016/Server 2019/Server 2022: Internet Information Services 10• Mac OS X 10.15• Mac OS X 11• Mac OS X 12• Cent OS Stream 8
--	--

LDAP Servers

Types of LDAP servers	<ul style="list-style-type: none">• Windows Server 2012 with Active Directory• Windows Server 2012 R2 with Active Directory• Windows Server 2016 with Active Directory• Windows Server 2019 with Active Directory• Windows Server 2022 with Active Directory
------------------------------	--

User's Guide



System requirements for the User's Guide	<p>Windows</p> <ul style="list-style-type: none">• Microsoft Edge• Firefox• Firefox ESR• Google Chrome <p>Mac OS</p> <ul style="list-style-type: none">• Safari• Firefox• Google Chrome <p>Linux</p> <ul style="list-style-type: none">• Firefox <p>iOS</p> <ul style="list-style-type: none">• Safari (Online browsing only) <p>Android</p> <ul style="list-style-type: none">• Google Chrome (Online browsing only)
---	---

Changes to Settings/Registration

Changes to Settings/Registration	42
New Items	43
<Default Paper Feed Source>(Ver. 3.12-)	44
<Pure Black Graphics>(Ver. 3.12-)	45
<Adj. Lead Edge Sec. Transfer Volt.>/<Correct Tail End Toner Application> (Ver. 3.12-)	47
<Allow Jobs to Be Performed from Mobile Device> (Ver. 3.12-)	50
<Change PIN> (Ver. 3.13-)	51
Changed Items	52

Changes to Settings/Registration

85EA-00J

This description explains changes to items in the <Settings/Registration> screen. The <Settings/Registration> screen appears when you press  /  (Settings/Registration) on the operation panel.

- ▶ **New Items(P. 43)**
- ▶ **Changed Items(P. 52)**

New Items

85EA-00K

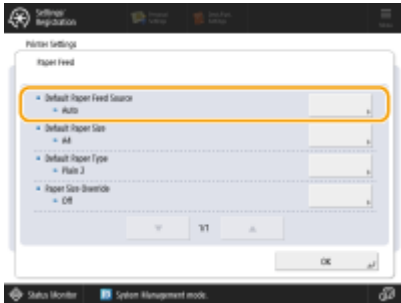
This section describes new items added to Settings/Registration.

- ▶<Default Paper Feed Source>(Ver. 3.12-)(P. 44)
- ▶<Pure Black Graphics>(Ver. 3.12-)(P. 45)
- ▶<Adj. Lead Edge Sec. Transfer Volt.>/<Correct Tail End Toner Application> (Ver. 3.12-)(P. 47)
- ▶<Allow Jobs to Be Performed from Mobile Device> (Ver. 3.12-)(P. 50)
- ▶<Change PIN> (Ver. 3.13-)(P. 51)

<Default Paper Feed Source> 3.12-

85EA-00L

(Settings/Registration) ▶ <Function Settings> ▶ <Printer> ▶ <Printer Settings> ▶ <Custom Settings> ▶ <Paper Feed>



In situations such as direct printing where you cannot specify the paper source, you can now preset which paper source will be used beforehand. Set this to <Auto> to automatically switch to a paper source that matches the size and type of paper to be used for printing.

■ Settings/Registration Table

For details on how to view the Settings/Registration Table, see "Settings/Registration" ▶ "Settings/Registration Table" in the "User's Guide".

Item	Setting Description	DeviceAdmin	NetworkAdmin	Can be set in Remote UI	Device Information Delivery Available	Import All Function	Name of Item When Exporting with the Remote UI
<Default Paper Feed Source>	<Auto>, <MP Tray>, <Drawer 1> to <Drawer X>*	Yes	Yes	Yes	No	B	Settings for Printer Settings

* Note that the number of drawers displayed differs depending on your model and the installed options.

<Pure Black Graphics> 3.12-

85EA-00R

Color

NOTE

iR ADV iR ADV DX

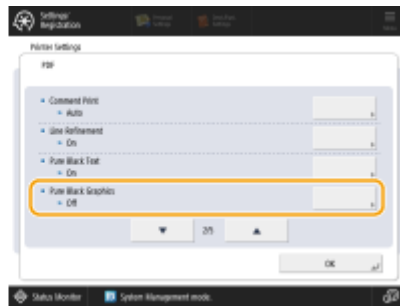
- Depending on the model, <PS> appears when the optional PS Printer Kit is installed.

C165

- <PS> appears when the optional imagePRESS PS Printer Kit is installed.

 (Settings/Registration) ▶ <Function Settings> ▶ <Printer> ▶ <Printer Settings> ▶ <Custom Settings> ▶ <PS>

 (Settings/Registration) ▶ <Function Settings> ▶ <Printer> ▶ <Printer Settings> ▶ <Custom Settings> ▶ <PDF>



Black graphics created using RGB or CMYK can now be printed using just a single toner color (K (Black)).

<On>

Graphics are printed using only (K (black)) toner. There is no drift of color toner into the area surrounding the printed graphics.



<Off>

Graphics are printed according to the settings in the selected Output Profile. Because graphics are printed using 4 colors, colors may drift into the area surrounding the graphics.



■ Settings/Registration Table

For details on how to view the Settings/Registration Table, see "Settings/Registration" ▶ "Settings/Registration Table" in the "User's Guide".


Changes to Settings/Registration

Item	Setting Description	DeviceAdmin	NetworkAdmin	Can be set in Remote UI	Device Information Delivery Available	Import All Function	Name of Item When Exporting with the Remote UI
<Pure Black Graphics>	<On>, <Off>	Yes	Yes	Yes	No	C	Settings for Printer Settings

<Adj. Lead Edge Sec. Transfer Volt.>/<Correct Tail End Toner Application> 3.12-

85EA-00S

C5800 C3800

 (Settings/Registration) ▶ <Preferences> ▶ <Paper Settings> ▶ <Paper Type Management Settings>



■ Adj. Lead Edge Sec. Transfer Volt.

If the image on the leading edge is faint or uneven compared to images printed on plain paper, you can now change the leading-edge secondary transfer voltage (the voltage that transfers toner to the paper) for the registered custom paper.

NOTE

- If the entire image becomes fainter or corrupt, rather than only the lead edge, change <Adjust Secondary Transfer Voltage>.
- Adjusting <Adjust Secondary Transfer Voltage> may affect the settings of <Correct Tail End Toner Application> and <Adjust Image Position>. Readjust these settings, if necessary.
- Follow the guidelines below to perform adjustment.
 - <Adjustment Level>: Increasing this in the positive direction increases the effect for lead edge image problems. Increasing the value too high may cause toner to be missing in high density areas.
 - <Correction Amount>: Increasing this in the positive direction increases the distance where control is performed from the lead edge of the paper. The distance increases in +1 mm increments.

■ Correct Tail End Toner Application

When curled paper or paper susceptible to curling is used for two-sided copying/printing, toner may not be adequately applied or the color may become faint on the tail end (from the feeding direction) of the paper. For low density images, the color may become fainter or denser. In these cases, you can now change the <Correct Tail End Toner Application> settings for the registered custom paper.

NOTE

- If the entire image becomes fainter or corrupt, rather than only the lead edge, change <Adjust Secondary Transfer Voltage>.
- Adjusting <Adjust Lead Edge Secondary Transfer Voltage> may affect the settings of <Correct Tail End Toner Application> and <Adjust Image Position>. Readjust these settings, if necessary.

- Follow the guidelines below to perform adjustment.
 - <Adjustment Level>: Increasing this in the positive direction increases the effect for tail end image problems. Increasing the value too high may cause toner to be missing in high density areas.
 - <Correction Amount>: Increasing this in the positive direction increases the distance where control is performed from the tail end of the paper in the lead edge direction when seen from the tail end of the paper. The distance increases in 1 mm increments.
- If performing adjustment does not improve the problem, adjust <Adjust Secondary Transfer Voltage> or <Adj. Lead Edge Sec. Transfer Volt.>. In this case, decreasing the secondary transfer voltage from the current value can have an effect, but adjustment should be performed gradually as it may affect the image.

■ Settings/Registration Table

For details on how to view the Settings/Registration Table, see "Settings/Registration" ► "Settings/Registration Table" in the "User's Guide."

C5800

Item	Setting Description	DeviceAdmin	NetworkAdmin	Can be set in Remote UI	Device Information Delivery Available	Import All Function	Name of Item When Exporting with the Remote UI
<Paper Type Management Settings>	<Details/Edit> <ul style="list-style-type: none"> ● <Name>, <Category>, <Basis Weight>, <Finish>, <Type>, <Color>, <Use as Template Paper>, <2nd Side of 2-Sided Page>, <Adjust Image Position>, <Adjust Creep Correction>, <Adjust Gloss>, <Adj. Secondary Transfer Voltage>, <Adj. Lead Edge Sec. Transfer Volt.>, <Correct Tail End Toner Application>, <Toner Amount Reduction Mode> 	Yes	No	Yes	No	C*	Paper Type Management Settings

Changes to Settings/Registration

Item	Setting Description	DeviceAdmin	NetworkAdmin	Can be set in Remote UI	Device Information Delivery Available	Import All Function	Name of Item When Exporting with the Remote UI
	<Duplicate>, <Delete>						

* <Use as Template Paper>, <2nd Side of 2-Sided Page>, <Adjust Image Position>, <Adjust Gloss>, <Adj. Secondary Transfer Voltage>, and <Toner Amount Reduction Mode> are categorized as "A."

C3800

Item	Setting Description	DeviceAdmin	NetworkAdmin	Can be set in Remote UI	Device Information Delivery Available	Import All Function	Name of Item When Exporting with the Remote UI
<Paper Type Management Settings>	<Details/Edit> <ul style="list-style-type: none"> • <Name>, <Category>, <Basis Weight>, <Finish>, <Type>, <Color>, <Use as Template Paper>, <Adjust Image Position>, <Adjust Creep Correction>, <Adjust Gloss>, <Adj. Secondary Transfer Voltage>, <Adj. Lead Edge Sec. Transfer Volt.>, <Correct Tail End Toner Application> <Duplicate>, <Delete>	Yes	No	Yes	No	C*	Paper Type Management Settings



* <Use as Template Paper>, <Adjust Gloss>, and <Adj. Secondary Transfer Voltage> are categorized as "A."

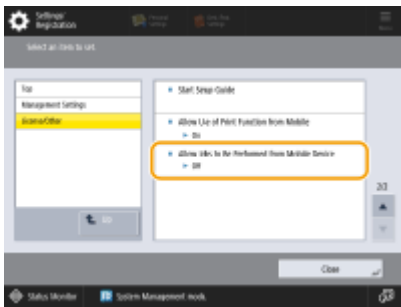
<Allow Jobs to Be Performed from Mobile Device>

3.12-

85EA-00U


- C7500 III
- C5500 III
- C3500 III
- C475 III
- C356 III
- C256 III
- 8500 III
- 6500 III
- 4500 III
- 715 III
- 615 III
- 525 III
- iR ADV DX
- C165

 /  (Settings/Registration) ▶ <Management Settings> ▶ <License/Other>



You can now specify settings to scan and then email/fax documents using a mobile device. When <Authenticate with PIN Code for Scan Jobs> is set to <On>, you must enter the PIN shown on this machine during job execution.

NOTE

- Set <Allow Jobs to Be Performed from Mobile Device> to <On> to enable the mobile authentication function.  appears in the login screen.

■ Settings/Registration Table

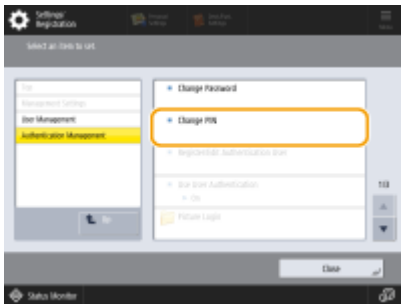
For details on how to view the Settings/Registration Table, see "Settings/Registration" ▶ "Settings/Registration Table" in the "User's Guide."

Item	Setting Description	DeviceAdmin	NetworkAdmin	Can be set in Remote UI	Device Information Delivery Available	Import All Function	Name of Item When Exporting with the Remote UI
<Allow Jobs to Be Performed from Mobile Device>	<On>, <Off> When <On> is selected: <ul style="list-style-type: none"> • <Authenticate with PIN Code for Scan Jobs>: <On>, <Off> 	Yes	Yes	No	No	C	Settings/Registration Basic Information

<Change PIN> 3.13-

85EA-00W

 /  (Settings/Registration) ▶ <Management Settings> ▶ <User Management> ▶ <Authentication Management>



General Users can now change their own login password.

NOTE

- This item only appears when User Authentication is used and a user has logged in with privileges other than Administrator.

■ Settings/Registration Table


For details on how to view the Settings/Registration Table, see "Settings/Registration" ▶ "Settings/Registration Table" in the "User's Guide".

Item	Setting Description	DeviceAdmin	NetworkAdmin	Can be set in Remote UI	Device Information Delivery Available	Import All Function	Name of Item When Exporting with the Remote UI
<Change PIN>	(7 characters maximum)	Yes	Yes	Yes	No	C	Authentication User Management

Changed Items


The settings with changes to the content and notes are shown below.

3.11-

 ▶ <Function Settings> ▶ <Print> ▶ <Enable Auto Print Function When Logging In>

Changing this setting from <Off> to <On> automatically sets <Auto Print User Jobs When Logging In> to <On> for all users. This means that users' own jobs will automatically be printed when they log in, without them having to change any settings.

3.12-

 (Settings/Registration) ▶ <Function Settings> ▶ <Store/Access Files> ▶ <Memory Media Settings> ▶ <Select Option When Connecting Memory Media>

- The default setting has been changed to <On>.

Current name	New name
<On>, <Off>	<On>, <Off>

 (Settings/Registration) ▶ <Management Settings> ▶ <User Management> ▶ <Authentication Management> ▶ <Picture Login> ▶ <Change Default Display for Picture Login Screen>

- The "(User group name)" settings have been added.

Current name	New name
<Name Order>, <Registration Order>, <Login Order>, (Text acquired from application)	<Name Order>, <Registration Order>, <Login Order>, (Text acquired from application), (User group name)

3.13-

 /  (Settings/Registration) ▶ <Preferences> ▶ <Network> ▶ <TCP/IP Settings> ▶ <WSD Settings>


- The name of the Settings/Registration item has been changed.

Current name	New name
<Use WSD Scan Function>	<Use WSD Scan>

 /  (Settings/Registration) ▶ <Preferences> ▶ <Network> ▶ <TCP/IP Settings> ▶ <DNS Settings>


- The name of the Settings/Registration item has been changed.

Current name	New name
<DNS Host/Domain Name Settings>	<DNS Host Name/Domain Name Settings>

 (Settings/Registration) ▶ <Preferences> ▶ <Network> ▶ <Wireless LAN> ▶ <Wireless LAN Settings> ▶ <Select Access Point>

- The conditions of the security settings have been changed.
- The name of <Enter Network Key (PSK)> has been changed to <Enter Network Key>.
- The name of <PSK> has been changed to <Encryption Key>.

Current name	New name
WPA/WPA2-PSK encryption: <Enter Network Key (PSK)> (<PSK>: Enter the WPA/WPA2-PSK Passphrase)	WPA/WPA2-PSK, WPA2-PSK/WPA3-SAE, WPA3-SAE encryption: <<Enter Network Key>> (<Encryption Key>: Enter the WPA/WPA2-PSK Passphrase)

 (Settings/Registration) ▶ <Preferences> ▶ <Network> ▶ <Wireless LAN> ▶ <Wireless LAN Settings> ▶ <Enter Manually>

- <WPA2-PSK/WPA3-SAE> and <WPA3-SAE> have been added to the setting items.

Current name	New name
<Security Settings>: <None>, <WEP>, <WPA/WPA2-PSK>, <WPA/WPA2-EAP>	<Security Settings>: <None>, <WEP>, <WPA/WPA2-PSK>, <WPA/WPA2-EAP>, <WPA2-PSK/WPA3-SAE>, <WPA3-SAE>

- The name of <Security Settings> (<WPA/WPA2-PSK>) has been changed to <Security Settings>.
- The name of <PSK> has been changed to <Encryption Key>.

Current name	New name
<ul style="list-style-type: none"> • <Security Settings> (<WPA/WPA2-PSK>) • <Encryption Method> (<Auto>, <AES-CCMP>), <PSK> 	<ul style="list-style-type: none"> • <Security Settings> • <Encryption Method> (<Auto>, <AES-CCMP>), <Encryption Key>

 (Settings/Registration) ▶ <Function Settings> ▶ <Common> ▶ <Paper Feed Settings>

- The name of the Settings/Registration item has been changed.

Current name	New name
<Paper Drawer Auto Selection On/Off>	<Paper Source Auto Selection>


- The name of the Settings/Registration item has been changed.

Current name	New name
<Paper Drawer Auto Selection Based on Color>	<Paper Source Auto Selection Based on Color>

 (Settings/Registration) ▶ <Function Settings> ▶ <Send> ▶ <Common Settings>

- The name of the Settings/Registration item has been changed.

Current name	New name
<Settings for Sent Document Backup>	<Archive TX Document>

 (Settings/Registration) ▶ <Function Settings> ▶ <Send> ▶ <Common Settings> ▶ <Settings for Sent Document Backup>

Changes to Settings/Registration

- The name of the Settings/Registration item has been changed.

Current name	New name
<Use Sent Document Backup Function>	<Use TX Document Archiving>

Changes to Messages

Changes to Messages 56

Changes to Messages

85EA-00Y

Changes to messages that appear on the screen of the machine or in a remote UI are shown below.

New and Additional Messages

3.11 –

Universal Print: A server communication error occurred.

The machine is not connected to the network correctly.

- Check the machine and network settings, and try connecting again.

Could not communicate because a server error occurred.

- Check whether the server is operating normally.

Communication with the server is blocked due to firewall settings.

- Configure the firewall settings to allow communication.

Universal Print: Could not authenticate with server.

An error has occurred during server authentication.

- Restart the machine. If the message still appears after restarting the machine, make a note of the message and contact your dealer or service representative.

Universal Print: The certificate has expired.

The expiration date of the certificate has expired.

- Delete this machine from Azure Active Directory and the computer, re-register the machine, and then update the certificate.

Universal Print: An internal error occurred.

The printer stopped operating normally due to an unknown problem.

- Restart the machine. If the message still appears after restarting the machine, make a note of the message and contact your dealer or service representative.

Universal Print: The printer is not registered.

This machine was deleted from Azure Active Directory and could not be communicated with.

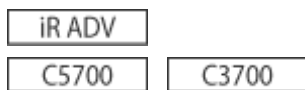
- Re-register this machine in Azure Active Directory.

Other Changes to the User's Guide

Other Changes to the User's Guide 58

Other Changes to the User's Guide

85EA-010



Basic Operations ▶ Setting Sounds

The description in "Adjusting the Volume for Sending/Receiving Faxes" has been changed.

You can adjust the volume of the communication sounds during fax transmission and the sound produced for the fax sending/receiving result. You can also set whether to sound a tone indicating the result of Fax Memory Lock sending/receiving.

Basic Operations ▶ Setting Sounds

The description of **a** <Alarm Volume> and **b** <Monitor Volume> in Step 2 of "Adjusting the Volume for Sending/Receiving Faxes" has been changed.

a <Alarm Volume>

Adjust the volume of the tone that sounds when the sending or receiving faxes is complete (except when printing received faxes) and the volume of the tone that sounds when a fax is canceled or ends due to an error. To mute the sound, press several times to set the volume to the far left.

b <Monitor Volume>

Adjust the volume of the following tones. To mute the sound, press several times to set the volume to the far left.

- The tone that sounds when sending faxes
- The tone that sounds when printing of a received fax is complete, and the tone that sounds when a fax ends due to an error

Linking with Mobile Devices ▶ Utilizing the Machine through Applications

The description of Chrome OS has been added.

■ Printing from Chrome OS

You can perform printing from Chrome OS without downloading a dedicated application or installing a driver. To print with the machine, it is necessary to enable Mopria®.

Confirming Mopria® settings



Log in to the Remote UI with Administrator privileges ▶ [Settings/Registration] ▶ [Network Settings] ▶ [Mopria Settings] ▶ select the [Use Mopria] check box ▶ [OK]

IMPORTANT

- If you enable the Mopria® setting, <Use Network Link Scan> also changes to <On>.
- To use the Mopria® scan service, <Use Network Link Scan> must be set to <On>.

Printing

1 Before printing, make sure that the machine is turned ON and connected to a Chromebook.

- For information on checking the connection status, see "Setting up the Network Environment" in the "User's Guide."
- See the Chromebook Help page (<https://support.google.com/chromebook/answer/7225252>) for more information on printing.

NOTE

- You can also connect the machine to a Chromebook using a USB cable. See the Chromebook website (<https://support.google.com/chromebook/answer/7225252>) for information on the connection procedure.

IMPORTANT

- Printing from Chrome OS may not be available, depending on your country or region.

Appendix ▶ MEAP ▶ Managing MEAP Applications

The description in "[MEAP Application Management]" of step 3 has been changed (description of the bottom row of the table under the second bullet point changed).

[Installed]	The MEAP application has been installed, but it is not ready for use. Even if you restart the machine after stopping the use of the MEAP application, [Installed] is displayed.
[Started]	The MEAP application is ready for use.
[Stopped]	The MEAP application is not ready for use.
[Starting]	The MEAP application is starting.
[Stopping]	The MEAP application is stopping.

Appendix ▶ System Specifications ▶ System Environment

Mail server software has changed (the fifth and sixth bullet points changed).

Compatible mail forwarding server software	<ul style="list-style-type: none"> • Microsoft Exchange Server 2010 • Microsoft Exchange Server 2013 • Microsoft Exchange Server 2016 • Microsoft Exchange Server 2019 • Sendmail 8.14.7 • Qpopper 4.1.0
---	--

Compatible mail receiving server software	<ul style="list-style-type: none"> • Microsoft Exchange Server 2010 • Microsoft Exchange Server 2013 • Microsoft Exchange Server 2016 • Microsoft Exchange Server 2019 • Sendmail 8.14.7 • Qpopper 4.1.0
--	--

iRADV

Basic Operations ▶ Customizing the Touch Panel Display ▶ Registering Frequently Used Settings and Destinations as Personal Buttons/Shared Buttons on the <Home> Screen ▶ Registering Personal Buttons/Shared Buttons

The "Importing/exporting the registered buttons" description in the NOTE above has been changed (description in the second bullet point modified).

NOTE

Importing/exporting the registered buttons

- You can import and export the registered Personal/Shared buttons from the Remote UI.
- Depending on the model from which the buttons are being imported, you may not be able to import all the settings for Personal/Shared buttons. For details, contact your local authorized Canon dealer.

Printing ▶ Various Printing Methods ▶ Copying Files to a Folder for Printing (Hot Folder)

The description in step 3 of "Adding a Hot Folder" has been changed (change to available items).

3 Click [Printer] ▶ [Hot Folder Management].

Printing ▶ Various Printing Methods ▶ Copying Files to a Folder for Printing (Hot Folder)

The NOTE in step 5 of "Storing Files to a Hot Folder for Printing" ▶ "When Disclosed via WebDAV" has been changed (description in the second bullet point modified).

5 Store the files for printing to the hot folder.

⇒ Printing starts.

NOTE

- Files in the PDF, TIFF, or JPEG format can be printed with a hot folder.
- Printing cannot be performed when the following security settings are set to <On>. Remote UI [Hot Folder Management] will also no longer appear.
 - [Use ACCESS MANAGEMENT SYSTEM]

- <Restrict Job from Remote Device without User Auth.>

Linking with Mobile Devices ▶ Connecting with Mobile Devices ▶ Connecting Directly

The title of "Connecting with Bluetooth" in "Connecting Directly (Access Point Mode)" has been changed ("(iOS)" has been deleted).

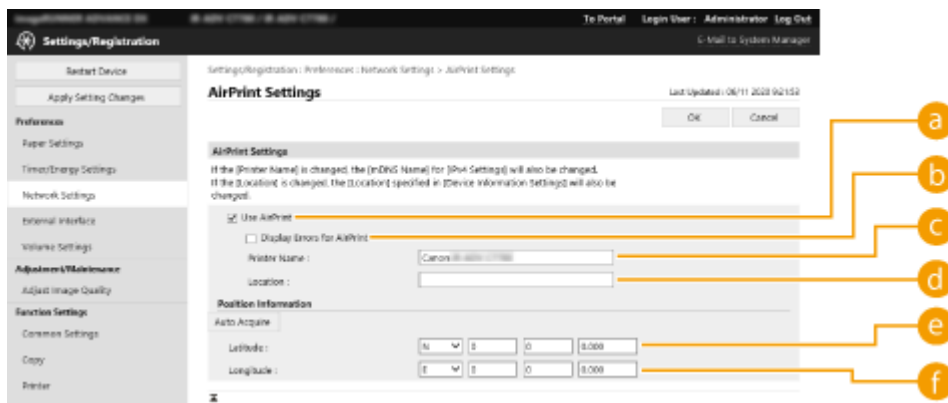
■ Connecting with Bluetooth

Linking with Mobile Devices ▶ Using AirPrint

The screen and description in step 4 in "Configuring AirPrint Settings" ▶ "Configuring Settings Using the Remote UI" have been changed as shown below.

- The [Display Errors for AirPrint] item has been added to the screen.
- The [Display Errors for AirPrint] item has been added to the description.

4 Specify the required settings, and click [OK].



a [Use AirPrint]

Select the check box to enable AirPrint. To disable AirPrint, clear the check box.

b [Display Errors for AirPrint]

If you are printing with AirPrint and there is an issue with the print file preventing the file from printing correctly, you can use this setting to choose whether an error screen appears on the control panel.

c [Printer Name]

Enter the name of the machine. If an mDNS name has already been registered in [mDNS Settings] ([Network Settings] in [Preferences] (Settings/Registration)), the registered name is displayed.

d [Location]

Enter the location of the machine. If a location has already been registered in [Device Information Settings] ([Device Management] in [Management Settings] (Settings/Registration)), the registered name is displayed.

e [Latitude]

Enter the latitude of the location where the machine is installed.

f [Longitude]

Enter the longitude of the location where the machine is installed.

Linking with Mobile Devices ▶ Using Google Cloud Print

You cannot print using Google Cloud Print because support for Google Cloud Print has ended.

Managing the Machine ▶ Managing Users ▶ Using Other Convenient Personal Authentication Management Functions ▶ Setting the Department ID Management

The introduction has been changed.

Users can be organized into groups such as the departments that they belong to, and managed based on their Department ID. First, create all of the Department IDs that are to be managed, and assign users to each one. After assigning users to Department IDs, enable Department ID Management. To perform the same type of management for printing or remote scan, configure the additional required settings. Administrator privileges are required in order to configure these settings.

Settings/Registration ▶ Settings/Registration Table ▶ Preferences ▶ Network

The value of <Prefix Length> has been changed (minimum value changed to 1).

- <TCP/IP Settings>: <IPv6 Settings>

Item	Setting Description	DeviceAdmin	NetworkAdmin	Can be set in Remote UI	Device Information Delivery Available	Import All Function	Name of Item When Exporting with the Remote UI
<Manual Address Settings>	<Prefix Length>: 1 to 64 to 128	No	Yes	Yes	No	A	Settings/Registration Basic Information

Settings/Registration ▶ Settings/Registration Table ▶ Preferences ▶ Network

The value of <Prefix Length> has been changed (minimum value changed to 1).

- <TCP/IP Settings>: <IPSec Settings>

Item	Setting Description	DeviceAdmin	NetworkAdmin	Can be set in Remote UI	Device Information Delivery Available	Import All Function	Name of Item When Exporting with the Remote UI
<Selector Settings>	<Local Address> (< All IP Addresses >, <IPv4 Address>, <IPv6 Address>, <IPv4 Manual Settings>, <IPv6 Manual Settings>)	No	Yes	Yes	No	C	Settings/Registration Basic Information

	<ul style="list-style-type: none"> <Prefix Length>: 1 to 64 to 128 	No	Yes	Yes	No	C	Settings/ Registration Basic Information
	<Remote Address> (< All IP Addresses >, <All IPv4 Addresses>, <All IPv6 Addresses>, <IPv4 Manual Settings>, <IPv6 Manual Settings>)	No	Yes	Yes	No	C	Settings/ Registration Basic Information
	<ul style="list-style-type: none"> <Prefix Length>: 1 to 64 to 128 	No	Yes	Yes	No	C	Settings/ Registration Basic Information

Settings/Registration ▶ Settings/Registration Table ▶ Preferences ▶ Volume Settings

<Incoming Fax Ring> has been deleted from "Item".

Item	Setting Description	DeviceAdmin	NetworkAdmin	Can be set in Remote UI	Device Information Delivery Available	Import All Function	Name of Item When Exporting with the Remote UI
<Fax Volume Settings>							
<Alarm Volume>	0 to 4 to 8	Yes	Yes	Yes	Yes	C	Settings/ Registration Basic Information
<Monitor Volume>	0 to 4 to 8	Yes	Yes	Yes	Yes	C	Settings/ Registration Basic Information
<Memory RX/TX End Tone>	<On>, < Off >	Yes	Yes	Yes	No	C	Settings/ Registration Basic Information
<Memory RX/TX Error Tone>	<On>, < Off >	Yes	Yes	Yes	No	C	Settings/ Registration Basic Information

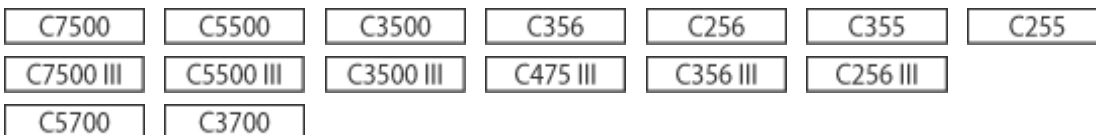
<Other Volume Settings>	<Entry Tone>: 0 to 2 to 3 <Invalid Entry Tone>: 0 to 3 <Restock Supplies Tone>: 0 to 3 <Forgot Original Tone>: 0 to 3 <Error Tone>: 0 to 2 to 3 <Job Done Tone>: 0 to 2 to 3 <Sleep Mode Tone>: 0 to 3 <Login Tone>: 0 to 2 to 3	Yes	Yes	Yes	Yes	C	Settings/ Registration Basic Information
-------------------------	---	-----	-----	-----	-----	---	---

Maintenance ▶ Printing Reports and Lists

The NOTE of "Printing a List of Usage History" ▶ "Storage log" has been changed (change to the description in the forth bullet point).

NOTE

- There are three types of store locations printed as the protocol. If one of the following conditions is met, the corresponding store location is printed.
 - Memory Media: If the data is stored in a removable media such as USB memory from <Scan and Store>
 - Local: If the data is stored in the Advanced Box of the machine from <Scan and Store>
 - Network: Saved on a Windows server using <Scan and Store>



Appendix ▶ System Specifications ▶ Printer Functions

The description in "Functions That Can Be Used with Each Page Description Language and File Format" has been changed (description of the second annotation changed).

*2 You can set this only to [Black & White].

Black&White

Copying ▶ Basic Copy Operations

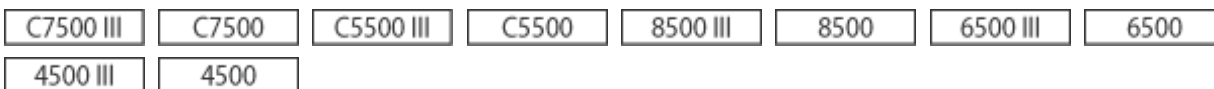
In step 4, further supplementary explanations have been added to step 3 of "Adjusting Image Quality of Copies" ▶ "Adjusting the Density of the Background of Copies" (second and third bullet points added).

3 Adjust density and press <OK>.

- Press <-> to decrease the density of the entire background. Press <+> to increase the density of the entire background.

NOTE:

- Depending on the colors of documents, sections other than the background may be affected.
- Press <+> to more clearly scan blue text such as receipts or copies of invoices.
- Press <-> to scan documents such as newspapers or other originals with colored backgrounds so that the text stands out clearly.



Appendix ▶ System Specifications ▶ System Options

The description in "HDD Mirroring Kit" has been changed.

The HDD Mirroring Kit enables you to back up the data on the hard disk of the machine to the additional optional HDD. Even if one storage device should fail, you can access the other storage device to reduce the risk of data loss.



Settings/Registration ▶ <Function Settings> ▶ <Common> ▶ <Different Paper Sizes for Output Tray>

The description in "NOTE" has been changed (description of the third bullet point deleted).

NOTE


- If you set <Different Paper Sizes for Output Tray> to <Off>, printing may stop when the message <Remove the paper from the output tray.> appears. To resume printing, remove all of the paper from the output tray.
- If you set both the Different Size Originals and Staple modes, outputs are stapled and collated, regardless of the Different Paper Sizes settings.
- This mode can be set when the Staple Finisher-X or Booklet Finisher-X is attached.



Settings/Registration ▶ <Preferences> ▶ <Paper Settings>

A NOTE has been added to <Multi-Purpose Tray Defaults>.

<Multi-Purpose Tray Defaults>

 (Settings/Registration) ▶ <Preferences> ▶ <Paper Settings>

- You can set the method for selecting the paper to use in the multi-purpose tray. If you always use the same paper size/type in the multi-purpose tray, it is convenient to register the paper in <Use Preset>.
- If you use various types of paper in the multi-purpose tray, select <Always Specify>. If you frequently use multiple types of paper, you can eliminate the procedure for selecting the paper type by registering the paper types in advance.

NOTE

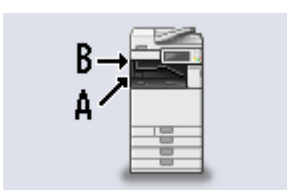

- When the following conditions are met, you can press <Temp. Change Ppr. in MP Tray> on the paper selection screen of <Copy> and <Access Stored Files> to change the paper size/type to load from the multi-purpose tray:
 - If paper is loaded in the multi-purpose tray
 - If this setting is set to <Use Preset>
 - If <Paper Feed Mode for Printer Driver Jobs with MP Tray> is set to <Mode A (Prioritize Printer Driver Settings)>



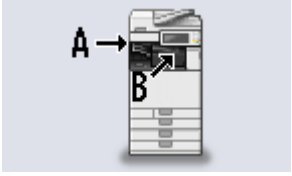
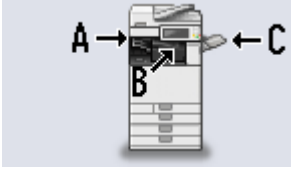

Basic Operations ▶ Specifying the Output Tray for Preprinted Paper

The description in "Available Functions by Device Configuration and Output Tray" has been changed as shown below.

- "3 Way Unit-D" has been deleted from the "Device Configuration" listing in "Inner Finisher-K" and "3 Way Unit-D".
- "3 Way Unit-D" has been added from the "Device Configuration" listing in "Staple Finisher-AA" or "Booklet Finisher-AA".

Device Configuration	Available Functions by Output Tray and Default Priority	Tray Location
Inner 2way Tray-J and 3 Way Unit-D	<Tray A> 1 Copy, 1 Access Stored Files, 1 Printer, 2 Receive, 2 Other Settings, 2 IP Fax, 2 Fax <Tray B> 2 Copy, 2 Access Stored Files, 2 Printer, 1 Receive, 1 Other Settings, 1 IP Fax, 1 Fax	
Copy Tray-J and 3 Way Unit-D	<Tray A> 1 Copy, 1 Access Stored Files, 1 Printer, 2 Receive, 2 Other Settings, 2 IP Fax, 2 Fax <Tray B>	

Other Changes to the User's Guide

	2 Copy, 2 Access Stored Files, 2 Printer, 1 Receive, 1 Other Settings, 1 IP Fax, 1 Fax	
Inner 2way Tray-J, Copy Tray-J, and 3 Way Unit-D	<p><Tray A> 1 Copy, 1 Access Stored Files, 1 Printer, Receive, Other Settings, IP Fax, Fax</p> <p><Tray B> 2 Copy, 2 Access Stored Files, 2 Printer, Receive, Other Settings, IP Fax, Fax</p> <p><Tray C> Copy, Access Stored Files, Printer, 1 Receive, 1 Other Settings, 1 IP Fax, 1 Fax</p>	
Inner Finisher-K	<p><Tray A> 1 Copy, 1 Access Stored Files, 1 Printer, 2 Receive, 2 Other Settings, 2 IP Fax, 2 Fax</p> <p><Tray B> 2 Copy, 2 Access Stored Files, 2 Printer, 1 Receive, 1 Other Settings, 1 IP Fax, 1 Fax</p>	
Inner Finisher-K, Copy Tray-J, and 3 Way Unit-D	<p><Tray A> 1 Copy, 1 Access Stored Files, 1 Printer, Receive, Other Settings, IP Fax, Fax</p> <p><Tray B> 2 Copy, 2 Access Stored Files, 2 Printer, Receive, Other Settings, IP Fax, Fax</p> <p><Tray C> Copy, Access Stored Files, Printer, 1 Receive, 1 Other Settings, 1 IP Fax, 1 Fax</p>	
Staple Finisher-AA and 3 Way Unit-D or Booklet Finisher-AA and 3 Way Unit-D	<p><Tray A> 2 Copy, 2 Access Stored Files, 2 Printer, 1 Receive, Other Settings, 1 IP Fax, 1 Fax</p> <p><Tray B> 1 Copy, 1 Access Stored Files, 1 Printer, Receive, Other Settings, IP Fax, Fax</p> <p><Tray C> Copy, Access Stored Files, Printer, Receive, 1 Other Settings, IP Fax, Fax</p>	
Staple Finisher-AA, Copy Tray-J, and 3 Way Unit-D or Booklet Finisher-AA, Copy Tray-J, and 3 Way Unit-D	<p><Tray A> 2 Copy, 2 Access Stored Files, 2 Printer, 1 Receive, Other Settings, 1 IP Fax, 1 Fax</p> <p><Tray B> 1 Copy, 1 Access Stored Files, 1 Printer, Receive, Other Settings, IP Fax, Fax</p> <p><Tray C> Copy, Access Stored Files, Printer, Receive, 1 Other Settings, IP Fax, Fax</p> <p><Tray D> Copy, Access Stored Files, Printer, 2 Receive, Other Settings, 2 IP Fax, 2 Fax</p>	


Settings/Registration ► Settings/Registration Table ► Set Destination

The comments below the tables have been changed (description for *2 modified).

*2 <Personal Address List>, <User Group Address List>: No

Settings/Registration ▶ <Preferences> ▶ <Paper Settings>

The description below the screen transition procedure for <Multi-Purpose Tray Defaults> has been changed (description in the second bullet point modified).

 (Settings/Registration) ▶ <Preferences> ▶ <Paper Settings>

- You can set the method for selecting the paper to use in the multi-purpose tray. If you always use the same paper size/type in the multi-purpose tray, it is convenient to register the paper in <Use Preset>.
- If you use various types of paper in the multi-purpose tray, select <Always Specify>. If you frequently use multiple types of paper, you can skip the procedure for selecting the paper type by registering the paper types in advance.

C475 III

Settings/Registration ▶ <Preferences> ▶ <Paper Settings>

The NOTE of "<Multi-Purpose Tray Defaults>" has been changed (description in the fourth bullet point modified).

NOTE

- When the following conditions are met, you can press <Temp. Change Ppr. in MP Tray> on the paper selection screen of <Copy> and <Access Stored Files> to change the paper size/type to load from the multi-purpose tray:
 - If paper is loaded in the multi-purpose tray
 - If this setting is set to <Use Preset>
 - If <Paper Feed Mode for Printer Driver Jobs with MP Tray> is set to <On>

C356 III

C256 III

C356

C256

C355

C255

Settings/Registration ▶ <Preferences> ▶ <Paper Settings>

The NOTE of "<Multi-Purpose Tray Defaults>" has been changed (description in the fourth bullet point modified).

NOTE

- When the following conditions are met, you can press <Temp. Change Ppr. in MP Tray> on the paper selection screen of <Copy> and <Access Stored Files> to change the paper size/type to load from the multi-purpose tray:
 - If paper is loaded in the multi-purpose tray
 - If this setting is set to <Use Preset>
 - If <Paper Feed Mode for Printer Driver Jobs with MP Tray> is set to <On>

Settings/Registration ▶ <Preferences> ▶ <Timer/Energy Settings>

The description of "<Use Motion Sensor>" has been changed (description above tables modified).

The following four sensitivity settings are available for <Sensor Sensitivity>. When a user stays in the detection area longer than a certain period of time, the machine exits the Sleep mode.

Sensitivity Setting	Sensitivity Level
Low	With this sensitivity level, the machine does not recover even if someone passes by slowly.
Standard	With this sensitivity level, the machine does not recover even if someone passes by at a regular speed.
Slightly High	With this sensitivity level, the recovery speed is prioritized more than the "Standard" level.
High	With this sensitivity level, the recovery speed is given top priority.

8500 III 8500 6500 III 6500

Settings/Registration ▶ Settings/Registration Table ▶ Function Settings ▶ Printer ▶ Custom Settings

The default setting for <Line Refinement> has been changed (default setting changed to <On>).

Item	Setting Description	DeviceAdmin	NetworkAdmin	Can be set in Remote UI	Device Information Delivery Available	Import All Function	Name of Item When Exporting with the Remote UI
<Line Refinement>	<On>, <Off>	Yes	Yes	Yes	Yes	C	Settings for Printer Settings

8500 III 8500

Settings/Registration ▶ <Function Settings> ▶ <Common> ▶ <Different Paper Sizes for Output Tray>

The description in "NOTE" has been changed (description of the third bullet point deleted).

NOTE

- If you set <Different Paper Sizes for Output Tray> to <Off>, printing may stop when the message <Remove the paper from the output tray.> appears. To resume printing, remove all of the paper from the output tray.
- If you set both the Different Size Originals and Staple modes, outputs are stapled and collated, regardless of the Different Paper Sizes settings.
- This mode can be set when the Staple Finisher-W PRO, Booklet Finisher-W PRO, Staple Finisher-X, or Booklet Finisher-X is attached.

715 III

615 III

525 III

Settings/Registration ▶ <Preferences> ▶ <Paper Settings>

The NOTE of "<Multi-Purpose Tray Defaults>" has been changed (description in the fourth bullet point modified).

NOTE

- When the following conditions are met, you can press <Temp. Change Ppr. in MP Tray> on the paper selection screen of <Copy> and <Access Stored Files> to change the paper size/type to load from the multi-purpose tray:
 - If paper is loaded in the multi-purpose tray
 - If this setting is set to <Use Preset>
 - If <Paper Feed Mode for Printer Driver Jobs with MP Tray> is set to <On>

715 III

615 III

525 III

Appendix ▶ Hardware Specifications ▶ High Capacity Cassette Feeding Unit-D

The value of "Paper Drawers Capacity" has been changed (value changed to "2,000 sheets").

Paper Drawers Capacity	550 sheets (75 g/m ² / 80 g/m ²) x 1 / 2,000 sheets (75 g/m ² / 80 g/m ²) x 1
-------------------------------	---

Changes for Each Version

Changes for Each Version	72
Changes from Ver. 3.12 to Ver. 3.13	73
Changes from Ver. 3.11 to Ver. 3.12	75
Changes from Ver. 3.10 to Ver. 3.11	77
Changes in Ver. 3.10 and earlier	78

Changes for Each Version

85EA-011

This section lists all the changes in each version.

- ▶ **Changes from Ver. 3.12 to Ver. 3.13(P. 73)**
- ▶ **Changes from Ver. 3.11 to Ver. 3.12(P. 75)**
- ▶ **Changes from Ver. 3.10 to Ver. 3.11(P. 77)**
- ▶ **Changes in Ver. 3.10 and earlier(P. 78)**

Changes from Ver. 3.12 to Ver. 3.13

85EA-012

The changes in Platform Version Ver. 3.13 are listed below. The functions and settings listed here may not be available on some models. For details, see the descriptions in the links in each change.

▶Changes to Functions(P. 73)

▶Changes to Settings/Registration(P. 73)

Changes to Functions

- Renaming of the button displayed in the <Home> screen
 - ▶**Changes to the <Home> Screen(P. 16)**
- Support for WPA3 security type via wireless LAN connection
 - ▶**Changes to Networks(P. 20)**
- Adding an item to force users to change their passwords at initial login to the information of the user to be registered in the local device
 - ▶**Changes to User Authentication(P. 23)**
- Change to specifications (Supported Operating Systems/System environment)
 - ▶**Changes to System Specifications(P. 34)**

Changes to Settings/Registration

- <Change PIN> added
 - ▶**<Change PIN> (Ver. 3.13-)(P. 51)**
- Renaming of <Use WSD Scan Function>
 - ▶**Changed Items(P. 52)**
- Renaming of <DNS Host/Domain Name Settings>
 - ▶**Changed Items(P. 52)**
- Renaming of <Enter Network Key (PSK)>
 - ▶**Changed Items(P. 52)**
- Renaming of <PSK>
 - ▶**Changed Items(P. 52)**
- <WPA2-PSK/WPA3-SAE> and <WPA3-SAE> have been added to the <Security Settings> setting items
 - ▶**Changed Items(P. 52)**
- Renaming of <Security Settings> (<WPA/WPA2-PSK>)
 - ▶**Changed Items(P. 52)**

- Renaming of <Paper Drawer Auto Selection On/Off>
▶ **Changed Items(P. 52)**
- Renaming of <Paper Drawer Auto Selection Based on Color>
▶ **Changed Items(P. 52)**
- Renaming of <Settings for Sent Document Backup>
▶ **Changed Items(P. 52)**
- Renaming of <Use Sent Document Backup Function>
▶ **Changed Items(P. 52)**

Changes from Ver. 3.11 to Ver. 3.12

85EA-013

The changes in Platform Version Ver. 3.12 are listed below. The functions and settings listed here may not be available on some models. For details, see the descriptions in the links in each change.

▶Changes to Functions(P. 75)

▶Changes to Settings/Registration(P. 75)

Changes to Functions

- Renaming of items displayed in the <Home> screen
 - ▶Changes to the <Home> Screen(P. 16)
- Renaming of items displayed in the one-touch button registration screen
 - ▶Changes to Destination Registration(P. 18)
- Support for specifying domains in IP addresses when configuring Active Directory server authentication
 - ▶Changes to Server Information Registration(P. 19)
- Support for using Color Network ScanGear 2 via a sub line
 - ▶Changes to Networks(P. 20)
- Support for changing the secondary transfer voltage (the voltage that transfers toner to the paper) for the registered custom paper
 - ▶Changes to the Secondary Transfer Voltage (Ver. 3.12-)(P. 24)
- Change to the number of sheets in the Eco (Staple-Free) mode
 - ▶Changes to the Eco (Staple-Free) mode (Ver. 3.12-)(P. 28)
- Process for removing paper jam when the inner finisher is installed added
 - ▶Changes Related to Clearing Paper Jams(P. 30)
- Change to specifications (Send functions/Printer functions/Storage space functions/System environment/Network environment)
 - ▶Changes to System Specifications(P. 34)

Changes to Settings/Registration

- <Default Paper Feed Source> added
 - ▶<Default Paper Feed Source>(Ver. 3.12-)(P. 44)
- <Pure Black Graphics> added
 - ▶<Pure Black Graphics>(Ver. 3.12-)(P. 45)
- <Adj. Lead Edge Sec. Transfer Volt.> and <Correct Tail End Toner Application> added

- ▶<Adj. Lead Edge Sec. Transfer Volt.>/<Correct Tail End Toner Application> (Ver. 3.12-)(P. 47)
- <Allow Jobs to Be Performed from Mobile Device> added
 - ▶<Allow Jobs to Be Performed from Mobile Device> (Ver. 3.12-)(P. 50)
- <Change Default Display for Picture Login Screen> setting added
 - ▶<Changed Items(P. 52)
- Default setting for <Select Option When Connecting Memory Media> changed
 - ▶<Changed Items(P. 52)

Changes from Ver. 3.10 to Ver. 3.11

85EA-014

The changes in Platform Version Ver. 3.11 are listed below. The functions and settings listed here may not be available on some models. For details, see the descriptions in the links in each change.

- ▶ **Changes to Functions(P. 77)**
- ▶ **Changes to Settings/Registration(P. 77)**
- ▶ **Changes to Messages(P. 77)**

Changes to Functions

- Support for Universal Print
 - ▶ **Support for Universal Print (Ver. 3.11-)(P. 7)**
- New functions added to the Visual Message function
 - ▶ **Addition of New Features to the Visual Message Function (Ver. 3.11-)(P. 14)**
- Changes to Supported Operating Systems
 - ▶ **Changes to System Specifications(P. 34)**

Changes to Settings/Registration

- Change to the description for configuring <Enable Auto Print Function When Logging In>.
 - ▶ **Changed Items(P. 52)**

Changes to Messages

- Messages for Universal Print added
 - ▶ **New and Additional Messages(P. 56)**

Changes in Ver. 3.10 and earlier

85EA-015

The changes in Platform Version Ver. 3.10 and earlier are listed below.

C7500 III	C5500 III	C3500 III	C475 III	C356 III	C256 III
8500 III	6500 III	4500 III	715 III	615 III	525 III



C7500	C5500	C3500	C356	C256	C355	C255
8500	6500	4500				



C165



Third Party Software

Third Party Software 80

Third Party Software

85EA-017

See the HTML manual for information on third-party software for each version. You can view the HTML manual from the online manual site (<https://oip.manual.canon/>).

This Font Software is licensed under the SIL Open Font License, Version 1.1.

This license is copied below, and is also available with a FAQ at: <http://scripts.sil.org/OFL>

SIL OPEN FONT LICENSE Version 1.1 - 26 February 2007

PREAMBLE

The goals of the Open Font License (OFL) are to stimulate worldwide development of collaborative font projects, to support the font creation efforts of academic and linguistic communities, and to provide a free and open framework in which fonts may be shared and improved in partnership with others.

The OFL allows the licensed fonts to be used, studied, modified and redistributed freely as long as they are not sold by themselves. The fonts, including any derivative works, can be bundled, embedded, redistributed and/or sold with any software provided that any reserved names are not used by derivative works. The fonts and derivatives, however, cannot be released under any other type of license. The requirement for fonts to remain under this license does not apply to any document created using the fonts or their derivatives.

DEFINITIONS

"Font Software" refers to the set of files released by the Copyright Holder(s) under this license and clearly marked as such. This may include source files, build scripts and documentation.

"Reserved Font Name" refers to any names specified as such after the copyright statement(s).

"Original Version" refers to the collection of Font Software components as distributed by the Copyright Holder(s).

"Modified Version" refers to any derivative made by adding to, deleting, or substituting -- in part or in whole -- any of the components of the Original Version, by changing formats or by porting the Font Software to a new environment.

"Author" refers to any designer, engineer, programmer, technical writer or other person who contributed to the Font Software.

PERMISSION & CONDITIONS

Permission is hereby granted, free of charge, to any person obtaining a copy of the Font Software, to use, study, copy, merge, embed, modify, redistribute, and sell modified and unmodified copies of the Font Software, subject to the following conditions:

- 1) Neither the Font Software nor any of its individual components, in Original or Modified Versions, may be sold by itself.
- 2) Original or Modified Versions of the Font Software may be bundled, redistributed and/or sold with any software, provided that each copy contains the above copyright notice and this license. These can be included either as stand-alone text files, human-readable headers or in the appropriate machine-readable metadata fields within text or binary files as long as those fields can be easily viewed by the user.
- 3) No Modified Version of the Font Software may use the Reserved Font Name(s) unless explicit written permission is granted by the corresponding Copyright Holder. This restriction only applies to the primary font name as presented to the users.
- 4) The name(s) of the Copyright Holder(s) or the Author(s) of the Font Software shall not be used to promote, endorse or advertise any Modified Version, except to acknowledge the contribution(s) of the Copyright Holder(s) and the Author(s) or with their explicit written permission.
- 5) The Font Software, modified or unmodified, in part or in whole, must be distributed entirely under this license, and must not be distributed under any other license. The requirement for fonts to remain under this license does not apply to any document created using the Font Software.

TERMINATION

This license becomes null and void if any of the above conditions are not met.

DISCLAIMER

THE FONT SOFTWARE IS PROVIDED "AS IS", WITHOUT WARRANTY OF ANY KIND, EXPRESS OR IMPLIED, INCLUDING BUT NOT LIMITED TO ANY WARRANTIES OF MERCHANTABILITY, FITNESS FOR A PARTICULAR PURPOSE AND NONINFRINGEMENT OF COPYRIGHT, PATENT, TRADEMARK, OR OTHER RIGHT. IN NO EVENT SHALL THE COPYRIGHT HOLDER BE LIABLE FOR ANY CLAIM, DAMAGES OR OTHER LIABILITY, INCLUDING ANY GENERAL, SPECIAL, INDIRECT, INCIDENTAL, OR CONSEQUENTIAL DAMAGES, WHETHER IN AN ACTION OF CONTRACT, TORT OR OTHERWISE, ARISING FROM, OUT OF THE USE OR INABILITY TO USE THE FONT SOFTWARE OR FROM OTHER DEALINGS IN THE FONT SOFTWARE.