



**imageRUNNER ADVANCE DX**

**User's Guide (Notification of  
New and Enhanced Functions)**

# Contents

<b>Read This First</b> .....	2
<b>Changes to Functions</b> .....	6
Changes to the Secondary Transfer Voltage (Ver. 3.12-) .....	7
Changes to the Eco (Staple-Free) mode (Ver. 3.12-) .....	11
Changes Related to Clearing Paper Jams .....	13
Changes to System Specifications .....	17
<b>Changes to Settings/Registration</b> .....	19
<b>New Items</b> .....	20
<Adj. Lead Edge Sec. Transfer Volt.>/< Correct Tail End Toner Application> (Ver. 3.12-) .....	21
<Allow Jobs to Be Performed from Mobile Device> (Ver. 3.12-) .....	24
<b>Other Changes to the User's Guide</b> .....	26
<b>Changes to Related Manuals</b> .....	36
Changes to Setup for Linking with Mobile Devices Administrator Guide .....	37
<b>Changes for Each Version</b> .....	39
Changes in Ver. 3.12 .....	40
<b>Third Party Software</b> .....	42

# Read This First

**Read This First** ..... 2

# Read This First

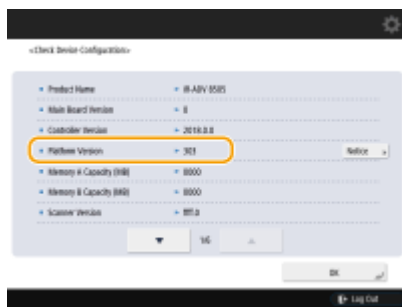
80L4-000

This manual should be read in conjunction with the User's Guide. This manual describes added functions and other changes for Platform Version Ver. 3.12 or later.

## ■ Checking The Version

Depending on the model, you may not be able to apply the latest Platform Version. Use the procedure below to check the version before reading this manual.

- 1 Press **[123]** (Counter/Device Information) or the [Counter/Device Information] key.
- 2 Press <Device Info./Other> ▶ <Check Device Configuration>.
- 3 Check the version in <Platform Version>.



## ■ How to Read This Manual

The meanings of the icons and other symbols used in this manual are explained below. Markings and screens not explained here are as described in the User's Guide.

### Supported Versions

The icons below indicate supported versions in the explanations of additions or changes resulting from firmware updates.

**3.12-**

Supported in Platform Version Ver. 3.12 or later

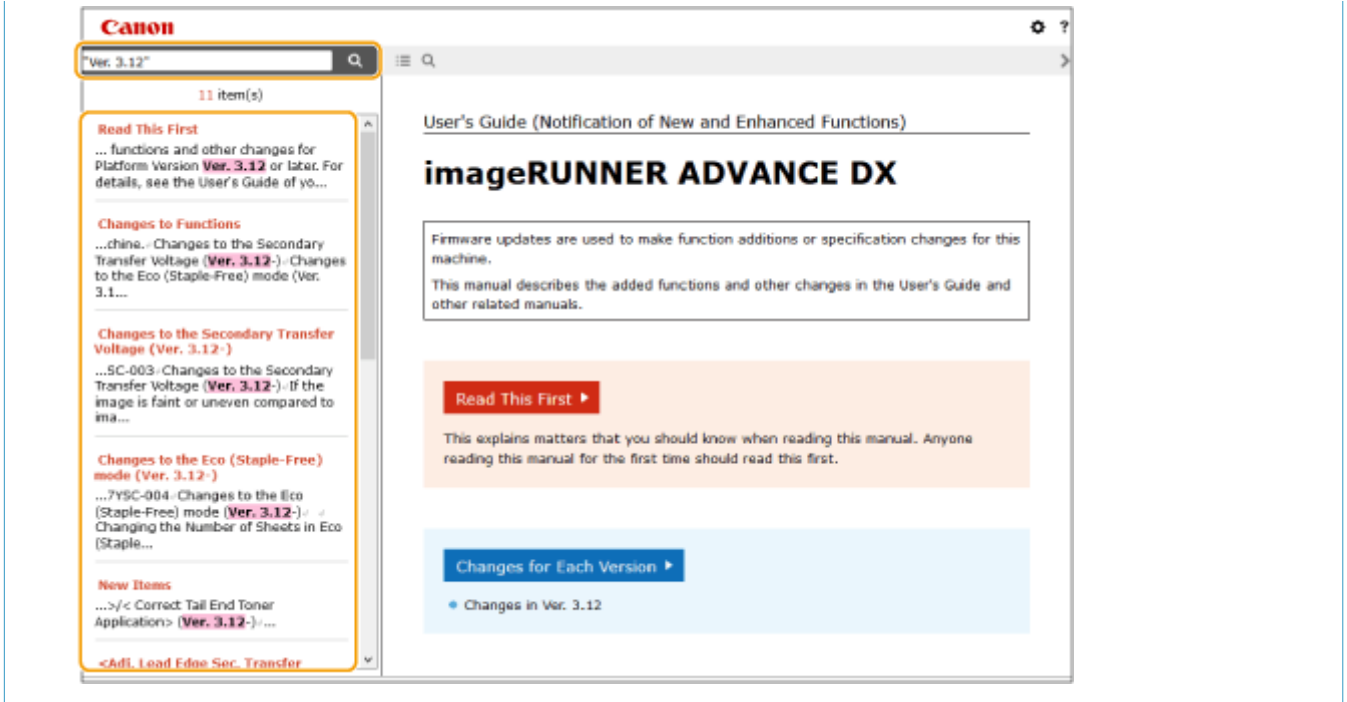
### Searching Listings for Supported Versions

#### Search list page

- Allows you to search pages that list all the changes in each version. **▶ Changes for Each Version(P. 39)** .

#### Search by keyword

- Searching by entering the version as a keyword (e.g. "Ver. 3.12") displays a list of pages that include that keyword. You can then search through the listed pages.



## Supported Models

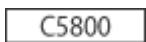
The icons below indicate information that is limited to certain supported models. Some machines may not be available, depending on the country or region.



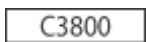
All color models



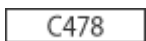
All black and white models



imageRUNNER ADVANCE DX C5870i / C5860i / C5850i / C5840i



imageRUNNER ADVANCE DX C3835i / C3835 / C3830i / C3830 / C3826i / C3826 / C3822i / C3822



imageRUNNER ADVANCE DX C478iZ / C478i

## NOTE

- Where the above icons are not shown, all models are supported.

## ■ Configuring How this Manual is Displayed

You can resize the text of this manual and switch the screen layout to suit the machine on which it is displayed.

## NOTE

- If you are unable to view the manual in PDF format, download Adobe Acrobat Reader from the Adobe Systems website (<https://get.adobe.com/reader/>).

## ■ Trademarks

Mopria®, the Mopria® Logo and the Mopria® Alliance logo are registered trademarks and service marks of Mopria Alliance, Inc. in the United States and other countries. Unauthorized use is strictly prohibited.

Google Chrome, Chrome OS, and Chromebook are trademarks of Google LCC.

## Read This First

All other trademarks are the property of their respective owners.

Other product and company names herein may be the trademarks of their respective owners.

# Changes to Functions

<b>Changes to Functions</b> .....	6
<b>Changes to the Secondary Transfer Voltage (Ver. 3.12-)</b> .....	7
<b>Changes to the Eco (Staple-Free) mode (Ver. 3.12-)</b> .....	11
<b>Changes Related to Clearing Paper Jams</b> .....	13
<b>Changes to System Specifications</b> .....	17

## Changes to Functions

---

80L4-002

This section describes the changes that apply to the functions of this machine.

- ▶ **Changes to the Secondary Transfer Voltage (Ver. 3.12-)(P. 7)**
- ▶ **Changes to the Eco (Staple-Free) mode (Ver. 3.12-)(P. 11)**
- ▶ **Changes Related to Clearing Paper Jams(P. 13)**
- ▶ **Changes to System Specifications(P. 17)**



# Changes to the Secondary Transfer Voltage 3.12-

80L4-003

C5800

C3800

Images printed on registered custom paper may be faint or uneven compared to images printed on plain paper. If this occurs, you can now scan the printed chart and change the secondary transfer voltage (the voltage that transfers toner to the paper).


- ▶ **Configuring/Printing the Chart(P. 7)**
- ▶ **Adjusting the Secondary Transfer Voltage(P. 8)**

## NOTE

- Adjustments made in <Adjust Secondary Transfer Voltage> may affect the <Adjust Image Position> setting. Readjust <Adjust Image Position> as needed.

## Configuring/Printing the Chart

To adjust the secondary transfer voltage, first print the chart page.

- 1** Press  (Settings/Registration).
- 2** Press <Preferences> ▶ <Paper Settings> ▶ <Paper Type Management Settings>.
- 3** Select the registered custom paper.
- 4** Press <Details/Edit>.
- 5** Press <Change> in <Adjust Secondary Transfer Voltage>.
- 6** Select the secondary transfer voltage adjustment method.
  - Press <Do Not Use Scanner> to view the printed chart, identify the optimal patch, and make manual adjustments.
  - Press <Use Scanner> to scan the printed chart and have the optimal patch identified and adjustments made automatically.
- NOTE:**
  - If you selected <Use Scanner>, the usable paper sizes are A3, A4, 11" x 17", and LTR.
- 7** Press <Chart Print Settings>.

## 8 Specify the settings for the chart to be printed and press <Next>.



### a <Chart Print Type>

Select <For Fine Adjustment> to make fine adjustments or <For Coarse Adjustment> if major adjustment is required.

- If you selected <For Fine Adjustment>, a chart is printed with adjustments in increments of  $\pm 1$ .
- If you selected <For Coarse Adjustment>, a chart is printed with adjustments in increments based on the status of the machine.

### b <Print Side>

Select the side on which the secondary transfer voltage is to be adjusted.

## NOTE:

- In any of the following situations, select <Front Side Only>.
  - If <2nd Side of 2-Sided Page> is set to <On> for a custom paper.
  - If you loaded paper in the multi-purpose tray and selected <2nd Side of 2-Sided Page> in <Paper Type>.
- If you selected <2-Sided>, see "Introduction (About the Machine)" ► "Available Paper" in the "User's Guide" for the papers that can be used for charts.

## 9 Select the paper source in which the custom paper is loaded ► press <OK>.

## 10 Press <Chart Print> or <Chart Print/Scan>.

- If you selected <Use Scanner> in step 2, press <Start Printing>.
- The chart is printed.

## Adjusting the Secondary Transfer Voltage

Use the printed chart to adjust the secondary transfer voltage. The procedure differs depending on the secondary transfer voltage adjustment method selected in step 2 of "◀Configuring/Printing the Chart(P. 7) ."

▶ If you selected <Do Not Use Scanner>(P. 8)

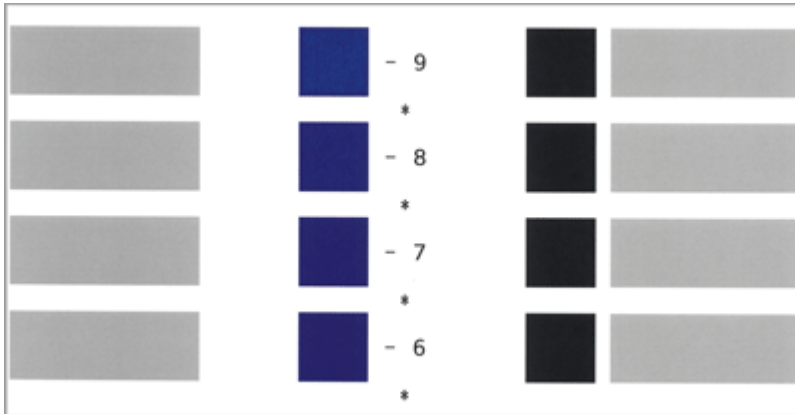
▶ If you selected <Use Scanner>(P. 10)

### ■ If you selected <Do Not Use Scanner>

Visually identify the optimal patch in the chart and adjust the secondary transfer voltage.

## 1 Check the optimal patch in the printed chart.

- With the current settings, chart numbers are printed in magenta.



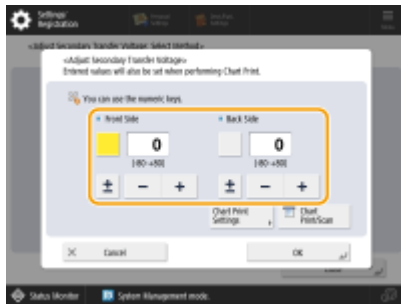
- Check the chart as you sequentially increase from negative values to positive values. When you reach a point where the density within the patch appears uniform (-8 in the example), compare it with a patch with a value that is higher by 2 (-7 and -6 in the example) and select the value you consider to be optimal.

### NOTE:

- A side that has a single asterisk (\*) printed next to the chart number is the front side.
- Where there is no discernible difference among the selected numbers, choose the middle of the three values (-7 in the example).

## 2 In the <Adjust Secondary Transfer Voltage> screen, enter the number confirmed in the chart.

- Select <Front Side> or <Back Side> and enter the number using <-> or <+>.



### NOTE:

- In either of the following situations, adjust the value for <Back Side>.
  - If <2nd Side of 2-Sided Page> is set to <On> for a custom paper.
  - If you loaded paper in the multi-purpose tray and selected <2nd Side of 2-Sided Page> in <Paper Type>.

## 3 Press <OK>.

■ If you selected <Use Scanner>

Scan the chart on the scanner to have the optimal patch identified automatically.

**1 Place the chart on the platen glass.**

- Place the chart while following the on-screen instructions.

**2 Close the feeder and press <Start Scanning>.**

⇒ The chart is scanned.

- If the chart was printed on both sides of the paper, place the other side of the chart on the platen glass and press <Start Scanning> again.

**NOTE:**

- You may not be able to scan special paper such as colored paper, transparencies, pre-punched paper, or labels. To scan special paper, select <Do Not Use Scanner> and make the adjustment manually.

**3 Open the feeder and remove the chart.**

**4 Press <OK>.**

## Changes to the Eco (Staple-Free) mode 3.12-

80L4-004

### ■ Changing the Number of Sheets in Eco (Staple-Free) Mode

The number of sheets in the Eco (Staple-Free) mode has changed as shown below.

C5800

#### Inner Finisher-L

<b>Staple</b>	<p style="text-align: center;"><b>Max. Stapling Capacity*</b></p> <p><b>Staple (Eco)</b></p> <ul style="list-style-type: none"> <li>• <b>A3, B4, A4, B5, 11" x 17", LTR, 8K, and 16K:</b> <ul style="list-style-type: none"> <li>10 sheets (52 g/m<sup>2</sup> to 64 g/m<sup>2</sup>)</li> <li>8 sheets (65 g/m<sup>2</sup> to 81.4 g/m<sup>2</sup>)</li> <li>6 sheets (82 g/m<sup>2</sup> to 105 g/m<sup>2</sup>)</li> </ul> </li> </ul>
---------------	---

\* When the standard staple cartridge is attached. (The maximum stapling capacity may vary, depending on the paper type and weight.)

#### Staple Finisher-AB / Booklet Finisher-AB

<b>Staple</b>	<p style="text-align: center;"><b>Max. Stapling Capacity*</b></p> <p><b>Staple (Eco)</b></p> <ul style="list-style-type: none"> <li>• <b>A3, A4, 11" x 17", LTR, 8K, and 16K:</b> <ul style="list-style-type: none"> <li>10 sheets (52 g/m<sup>2</sup> to 64 g/m<sup>2</sup>)</li> <li>8 sheets (65 g/m<sup>2</sup> to 81.4 g/m<sup>2</sup>)</li> <li>6 sheets (82 g/m<sup>2</sup> to 105 g/m<sup>2</sup>)</li> </ul> </li> </ul>
---------------	---

\* When the standard staple cartridge is attached. (The maximum stapling capacity may vary, depending on the paper type and weight.)

C3800

#### Inner Finisher-L

<b>Staple</b>	<p style="text-align: center;"><b>Max. Stapling Capacity*</b></p> <p><b>Staple (Eco):</b></p> <ul style="list-style-type: none"> <li>• <b>All sizes:</b> <ul style="list-style-type: none"> <li>10 sheets (52 g/m<sup>2</sup> to 64 g/m<sup>2</sup>)</li> <li>8 sheets (65 g/m<sup>2</sup> to 81.4 g/m<sup>2</sup>)</li> <li>6 sheets (82 g/m<sup>2</sup> to 105 g/m<sup>2</sup>)</li> </ul> </li> </ul>
---------------	--

\* When the standard staple cartridge is attached. (The maximum stapling capacity may vary, depending on the paper type and weight.)

**Staple Finisher-AE / Booklet Finisher-AE**

---

<b>Staple</b>	<b>Max. Stapling Capacity*</b> <b>Staple (Eco):</b> 10 sheets (52 g/m <sup>2</sup> to 64 g/m <sup>2</sup> ) 8 sheets (65 g/m <sup>2</sup> to 81.4 g/m <sup>2</sup> ) 6 sheets (82 g/m <sup>2</sup> to 105 g/m <sup>2</sup> )
---------------	--

\* When the standard staple cartridge is attached. (The maximum stapling capacity may vary, depending on the paper type and weight.)

## Changes Related to Clearing Paper Jams

80L4-00J

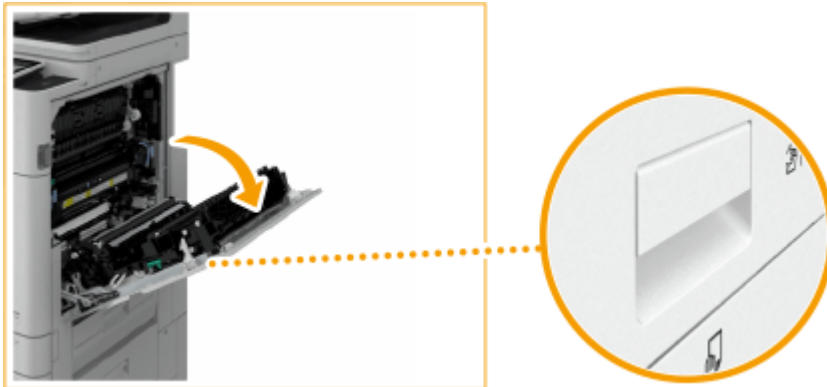
3.12-

C5800

C3800

If a paper jam occurs inside the main unit when the inner finisher is installed, there is an additional process for clearing the paper jam. This describes the process, using images of the C5800 series as examples.

### 1 Open the right cover of the main unit.

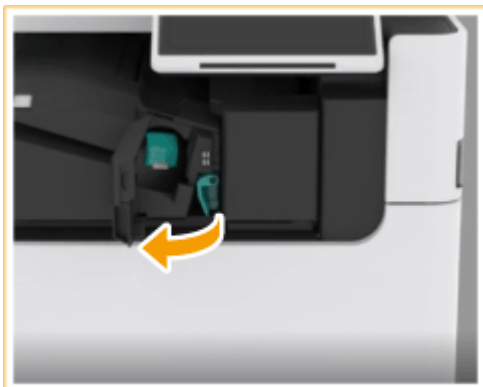


### 2 Check whether paper is jammed in the output unit.

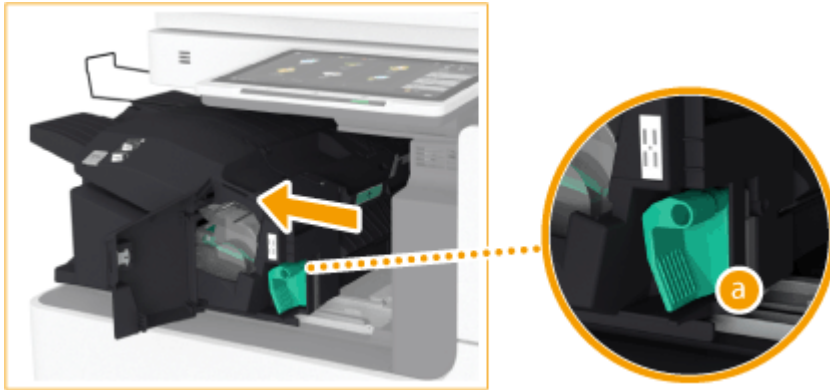
- If paper is jammed, gently pull it out in the direction of the arrow.



### 3 Open the left cover of the finisher.



- 4 Hold the lever ( a ), and slide the inner finisher to the left.



- 5 Check whether paper is jammed in the inner finisher.

- 1 Lift up the guide at the entrance.



- 2 If paper is jammed, gently pull it out in the direction of the arrow.



- 3 Return the guide to its original position.

■When the Puncher Unit is attached:

- 1 Open the front cover of the puncher unit.





- 2** Turn the green knob to feed the jammed paper to the outlet of the puncher unit.

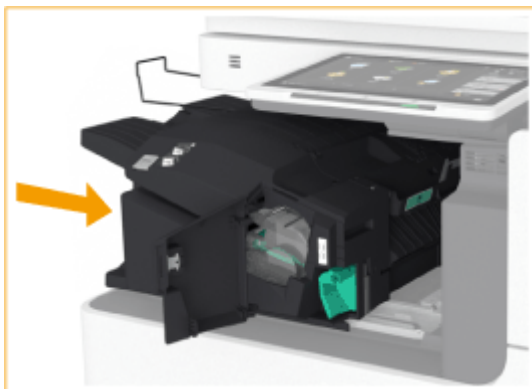


- 3** If paper comes out of the outlet of the puncher unit, gently pull the paper out in the direction of the arrow.



- 4** Close the front cover of the puncher unit.

- 6** Return the inner finisher to its original position.



**7 Close the left cover of the finisher.**

**8 Gently close the right cover of the main unit until they click.**

- Continue following the instructions on the screen to proceed with the interrupted operation or continue clearing paper jams.

# Changes to System Specifications

80L4-005

## 3.12-

- ▶ Changes to Send Functions(P. 17)
- ▶ Changes to Printer Functions(P. 17)

### ■ Changes to Send Functions

The interfaces have changed as shown below.

#### Push Scan

<b>Interface</b>	1000 Base-T/100 Base-TX/10 Base-T (IEEE 802.3 compliant), Wi-Fi (IEEE 802.11b/g/n)
------------------	--

#### Pull Scan

<b>Interface</b>	USB2.0High-Speed, 1000Base-T/100Base-TX/10Base-T (IEEE 802.3 compliant), Wi-Fi (IEEE 802.11b/g/n)
------------------	---

### ■ Changes to Printer Functions

The interfaces have changed as shown below.

#### UFR II Printer Function

<b>Interface</b>	USB2.0High-Speed, 1000Base-T/100Base-TX/10Base-T (IEEE 802.3 compliant), Wi-Fi (IEEE 802.11b/g/n)
------------------	---

#### PCL Printer Function

<b>Interface</b>	USB2.0High-Speed, 1000Base-T/100Base-TX/10Base-T (IEEE 802.3 compliant), Wi-Fi (IEEE 802.11b/g/n)
------------------	---

#### PS Printer Function

<b>Interface</b>	USB2.0High-Speed, 1000Base-T/100Base-TX/10Base-T (IEEE 802.3 compliant), Wi-Fi (IEEE 802.11b/g/n)
------------------	---


# Changes to Settings/Registration

<b>Changes to Settings/Registration</b> .....	19
<b>New Items</b> .....	20
<Adj. Lead Edge Sec. Transfer Volt.>/< Correct Tail End Toner Application> (Ver. 3.12-) .....	21
<Allow Jobs to Be Performed from Mobile Device> (Ver. 3.12-) .....	24

## Changes to Settings/Registration

---

80L4-006

This description explains changes to items in the <Settings/Registration> screen. The <Settings/Registration> screen appears when you press  (Settings/Registration) on the operation panel.

 **New Items(P. 20)**

## New Items

---

80L4-007


This section describes new items added to Settings/Registration.

- ▶<Adj. Lead Edge Sec. Transfer Volt.>/< Correct Tail End Toner Application> (Ver. 3.12-)(P. 21)
- ▶<Allow Jobs to Be Performed from Mobile Device> (Ver. 3.12-)(P. 24)

# <Adj. Lead Edge Sec. Transfer Volt.>/< Correct Tail End Toner Application> 3.12-

80L4-008

C5800 C3800

 (Settings/Registration) ▶ <Preferences> ▶ <Paper Settings> ▶ <Paper Type Management Settings>



## ■ Adj. Lead Edge Sec. Transfer Volt.

If the image on the leading edge is faint or uneven compared to images printed on plain paper, you can now change the leading-edge secondary transfer voltage (the voltage that transfers toner to the paper) for the registered custom paper.

### NOTE

- If the entire image becomes fainter or corrupt, rather than only the lead edge, change <Adjust Secondary Transfer Voltage>.
- Adjusting <Adjust Secondary Transfer Voltage> may affect the settings of <Correct Tail End Toner Application> and <Adjust Image Position>. Readjust these settings, if necessary.
- Follow the guidelines below to perform adjustment.
  - <Adjustment Level>: Increasing this in the positive direction increases the effect for lead edge image problems. Increasing the value too high may cause toner to be missing in high density areas.
  - <Correction Amount>: Increasing this in the positive direction increases the distance where control is performed from the lead edge of the paper. The distance increases in +1 mm increments.

## ■ Correct Tail End Toner Application

When curled paper or paper susceptible to curling is used for two-sided copying/printing, toner may not be adequately applied or the color may become faint on the tail end (from the feeding direction) of the paper. For low density images, the color may become fainter or denser. In these cases, you can now change the <Correct Tail End Toner Application> settings for the registered custom paper.

### NOTE

- If the entire image becomes fainter or corrupt, rather than only the lead edge, change <Adjust Secondary Transfer Voltage>.
- Adjusting <Adjust Lead Edge Secondary Transfer Voltage> may affect the settings of <Correct Tail End Toner Application> and <Adjust Image Position>. Readjust these settings, if necessary.

- Follow the guidelines below to perform adjustment.
  - <Adjustment Level>: Increasing this in the positive direction increases the effect for tail end image problems. Increasing the value too high may cause toner to be missing in high density areas.
  - <Correction Amount>: Increasing this in the positive direction increases the distance where control is performed from the tail end of the paper in the lead edge direction when seen from the tail end of the paper. The distance increases in 1 mm increments.
- If performing adjustment does not improve the problem, adjust <Adjust Secondary Transfer Voltage> or <Adj. Lead Edge Sec. Transfer Volt.>. In this case, decreasing the secondary transfer voltage from the current value can have an effect, but adjustment should be performed gradually as it may affect the image.

### ■ Settings/Registration Table

For details on how to view the Settings/Registration Table, see "Settings/Registration" ► "Settings/Registration Table" in the "User's Guide."

C5800

Item	Setting Description	DeviceAdmin	NetworkAdmin	Can be set in Remote UI	Device Information Delivery Available	Import All Function	Name of Item When Exporting with the Remote UI
<Paper Type Management Settings>	<Details/Edit> <ul style="list-style-type: none"> <li>● &lt;Name&gt;, &lt;Category&gt;, &lt;Basis Weight&gt;, &lt;Finish&gt;, &lt;Type&gt;, &lt;Color&gt;, &lt;Use as Template Paper&gt;, &lt;2nd Side of 2-Sided Page&gt;, &lt;Adjust Image Position&gt;, &lt;Adjust Creep Correction&gt;, &lt;Adjust Gloss&gt;, &lt;Adj. Secondary Transfer Voltage&gt;, &lt;Adj. Lead Edge Sec. Transfer Volt.&gt;, &lt;Correct Tail End Toner Application&gt;, &lt;Toner Amount Reduction Mode&gt;</li> </ul>	Yes	No	Yes	No	C*	Paper Type Management Settings



Changes to Settings/Registration

Item	Setting Description	DeviceAdmin	NetworkAdmin	Can be set in Remote UI	Device Information Delivery Available	Import All Function	Name of Item When Exporting with the Remote UI
	<Duplicate>, <Delete>						

\* <Use as Template Paper>, <2nd Side of 2-Sided Page>, <Adjust Image Position>, <Adjust Gloss>, <Adj. Secondary Transfer Voltage>, and <Toner Amount Reduction Mode> are categorized as "A."

C3800


Item	Setting Description	DeviceAdmin	NetworkAdmin	Can be set in Remote UI	Device Information Delivery Available	Import All Function	Name of Item When Exporting with the Remote UI
<Paper Type Management Settings>	<Details/Edit> <ul style="list-style-type: none"> <li>• &lt;Name&gt;, &lt;Category&gt;, &lt;Basis Weight&gt;, &lt;Finish&gt;, &lt;Type&gt;, &lt;Color&gt;, &lt;Use as Template Paper&gt;, &lt;Adjust Image Position&gt;, &lt;Adjust Creep Correction&gt;, &lt;Adjust Gloss&gt;, &lt;Adj. Secondary Transfer Voltage&gt;, &lt;Adj. Lead Edge Sec. Transfer Volt.&gt;, &lt;Correct Tail End Toner Application&gt;</li> </ul> <Duplicate>, <Delete>	Yes	No	Yes	No	C*	Paper Type Management Settings

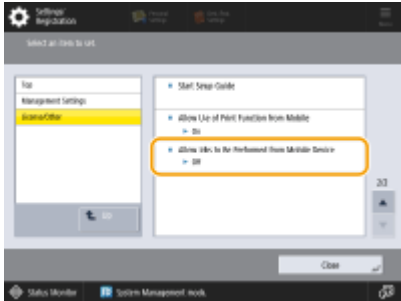
\* <Use as Template Paper>, <Adjust Gloss>, and <Adj. Secondary Transfer Voltage> are categorized as "A."

# <Allow Jobs to Be Performed from Mobile Device>

3.12-


80L4-00K

 (Settings/Registration) ▶ <Management Settings> ▶ <License/Other>



You can now specify settings to scan and then email/fax documents using a mobile device. When <Authenticate with PIN Code for Scan Jobs> is set to <On>, you must enter the PIN shown on this machine during job execution.

**NOTE**

- Set <Allow Jobs to Be Performed from Mobile Device> to <On> to enable the mobile authentication function.  appears in the login screen.

## ■ Settings/Registration Table

For details on how to view the Settings/Registration Table, see "Settings/Registration" ▶ "Settings/Registration Table" in the "User's Guide."

Item	Setting Description	DeviceAdmin	NetworkAdmin	Can be set in Remote UI	Device Information Delivery Available	Import All Function	Name of Item When Exporting with the Remote UI
<Allow Jobs to Be Performed from Mobile Device>	<On>, <Off> When <On> is selected: <ul style="list-style-type: none"> <li>&lt;Authenticate with PIN Code for Scan Jobs&gt;: &lt;On&gt;, &lt;Off&gt;</li> </ul>	Yes	Yes	No	No	C	Settings/Registration Basic Information

# Other Changes to the User's Guide

**Other Changes to the User's Guide** ..... 26

## Other Changes to the User's Guide

80L4-009

### Linking with Mobile Devices ▶ Utilizing the Machine through Applications

The description of Chrome OS has been added.

#### ■ Printing from Chrome OS

You can perform printing from Chrome OS without downloading a dedicated application or installing a driver. To print with the machine, it is necessary to enable Mopria®.

#### Confirming Mopria® settings



Log in to the Remote UI with Administrator privileges ▶ [Settings/Registration] ▶ [Network Settings] ▶ [Mopria Settings] ▶ select the [Use Mopria] check box ▶ [OK]

### IMPORTANT

- If you enable the Mopria® setting, <Use Network Link Scan> also changes to <On>.
- To use the Mopria® scan service, <Use Network Link Scan> must be set to <On>.

### Printing

#### 1 Before printing, make sure that the machine is turned ON and connected to a Chromebook.

- For information on checking the connection status, see "Setting up the Network Environment" in the "User's Guide."
- See the Chromebook Help page (<https://support.google.com/chromebook/answer/7225252>) for more information on printing.

### NOTE

- You can also connect the machine to a Chromebook using a USB cable. See the Chromebook website (<https://support.google.com/chromebook/answer/7225252>) for information on the connection procedure.

### IMPORTANT

- Printing from Chrome OS may not be available, depending on your country or region.

**Appendix ▶ MEAP ▶ Managing MEAP Applications**

The description in "[MEAP Application Management]" of step 3 has been changed (description of the bottom row of the table under the second bullet point changed).

[Installed]	The MEAP application has been installed, but it is not ready for use. Even if you restart the machine after stopping the use of the MEAP application, [Installed] is displayed.
[Started]	The MEAP application is ready for use.
[Stopped]	The MEAP application is not ready for use.
[Starting]	The MEAP application is starting.
[Stopping]	The MEAP application is stopping.

**Appendix ▶ System Specifications ▶ System Environment**

Mail server software has changed (the fifth and sixth bullet points changed).

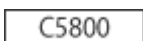
<b>Compatible mail forwarding server software</b>	<ul style="list-style-type: none"> <li>● Microsoft Exchange Server 2010</li> <li>● Microsoft Exchange Server 2013</li> <li>● Microsoft Exchange Server 2016</li> <li>● Microsoft Exchange Server 2019</li> <li>● Sendmail 8.14.7</li> <li>● Qpopper 4.1.0</li> </ul>
<b>Compatible mail receiving server software</b>	<ul style="list-style-type: none"> <li>● Microsoft Exchange Server 2010</li> <li>● Microsoft Exchange Server 2013</li> <li>● Microsoft Exchange Server 2016</li> <li>● Microsoft Exchange Server 2019</li> <li>● Sendmail 8.14.7</li> <li>● Qpopper 4.1.0</li> </ul>



**Appendix ▶ System Specifications ▶ Printer Functions**

The description in "Functions That Can Be Used with Each Page Description Language and File Format" has been changed (description of the second annotation changed).

\*2 You can set this only to [Black & White].



**Introduction (About the Machine) ▶ Hardware Specifications ▶ Main Unit**

The description in "Memory Capacity" has been changed (description of RAM changed).

<b>Memory Capacity</b>	<p><b>RAM:</b> 5 GB (Main CPU Side: 2 GB, Image Processing CPU Side: 2 GB + 1 GB (reserved for image processing))</p> <p><b>Storage Disk:</b></p> <ul style="list-style-type: none"> <li>● <b>Standard:</b> 256 GB</li> <li>● <b>Maximum:</b> 1 TB*6</li> </ul>
------------------------	---

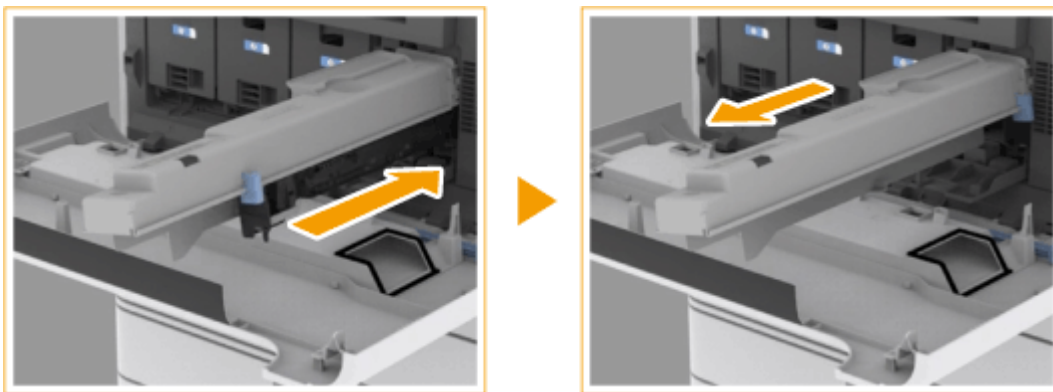
C5800

**Introduction (About the Machine) ▶ Main Unit Maintenance ▶ Replacing the Drum Unit**

An "IMPORTANT" section has been added to step 6 in the "Procedure for Replacing the Drum Unit."

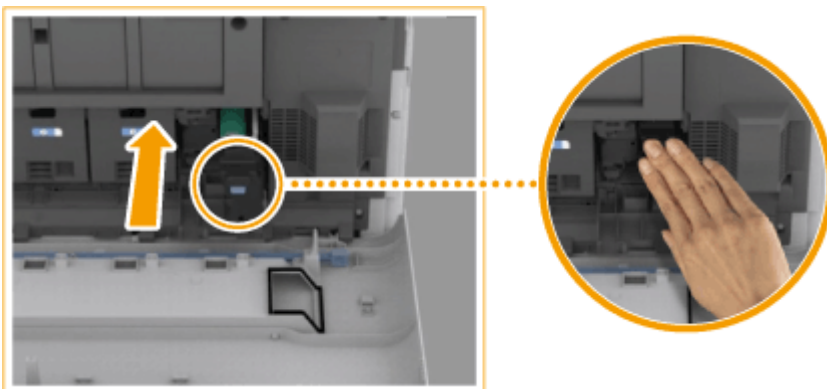
**6 Remove the protective cover.**

- First push in the slider on the right side of the gray protective cover toward the back of the main unit until it cannot go any further, and then pull out the protective cover.



**IMPORTANT:**

- After removing the protective cover, check that the drum unit is pushed fully into the main unit. Failing to push the drum unit in fully will cause a malfunction.



C5800

**Setting Up ▶ Setting up the Network Environment**

The description in "NOTE" after step 6 has been changed.

## NOTE

### When <Sleep Mode Energy Use> is set to <Low>

- Depending on the utility software, communication may fail if the machine is in sleep mode. Return the machine from sleep status.

### Setting Up ► Setting up the Network Environment ► Selecting the Network Connection Method

The description in "IMPORTANT" has been changed (description of the first and second bullet points deleted and the third bullet point added in "If you selected <Wireless LAN> or <Wired LAN + Wireless LAN>").

## IMPORTANT

- When using a sub line, see "Cautions When Using the Sub Line" in the User's Guide.

### If you selected <Wireless LAN> or <Wired LAN + Wireless LAN>

- The settings of <Wireless LAN Settings> are cleared.
- You cannot set wireless LAN as the main line and wired LAN as the sub line.
- Set <Sleep Mode Energy Use> to <High>.

### Cautions When Using Wired LAN (Sub Line)

- Set <Sleep Mode Energy Use> to <High>.

### Setting Up ► Setting up the Network Environment ► Adapting to the Network Environment ► Making SMB Settings

The description of "ⓘ <Require Encryption for Connection>" in step 3 of "Setting the SMB Server" has been changed.

#### ⓘ <Require Encryption for Connection>

To request a connection with SMB v3.0 encrypted communication when connecting to an SMB server, press <On>.

### Setting Up ► Setting up the Network Environment ► Adapting to the Network Environment ► Making SMB Settings

The description of "NOTE" in "Setting the SMB Server" has been changed.

## NOTE

- If you set <Require Encryption for Connection> to <On>, you will become unable to connect to the machine from client operating systems that do not support SMB v3.0 encrypted communication.

## Setting Up ► Setting up the Network Environment ► Adapting to the Network Environment ► Making SMB Settings

The description of "**c** <Require Encryption for Connection>" in step 3 of "Setting the SMB Client" has been changed.

### **c** <Require Encryption for Connection>

To request a connection with SMB v3.0 encrypted communication when connecting to an SMB server, press <On>.

## Setting Up ► Setting up the Network Environment ► Adapting to the Network Environment ► Making SMB Settings

The description of "IMPORTANT" in "Setting the SMB Client" has been changed (the first bullet point changed).

## IMPORTANT

- When <Require Encryption for Connection> is set to <On>, the machine can only connect to SMB servers that support SMB v3.0 encrypted communication. When <1.0> and <2.0> are set to <On> for <Specify SMB Client Version> but <3.0> is not set to <On>, the machine cannot connect to SMB servers that do not support SMB v3.0 encrypted communication.
- Use the same version of SMB with the SMB server and SMB client. SMB cannot be used if the versions differ.

## Setting Up ► Setting the Advanced Space of the Machine ► Setting Advanced Space to Public

The description of "**b** <Require Encryption for Connection>" in step 1 of "If you set to <By SMB> and set the <Authentication Management> setting to <On>" in step 5 of "Advanced Space Batch Settings" has been changed.

### **b** <Require Encryption for Connection>

To request a connection with SMB v3.0 encrypted communication when connecting to an SMB server, press <On>.

## Basic Operations ► Setting Sounds


The description in "Adjusting the Volume for Sending/Receiving Faxes" has been changed.

You can adjust the volume of the communication sounds during fax transmission and the sound produced for the fax sending/receiving result. You can also set whether to sound a tone indicating the result of Fax Memory Lock sending/receiving.

## Basic Operations ► Setting Sounds


The description of **a** <Alarm Volume> and **b** <Monitor Volume> in Step 2 of "Adjusting the Volume for Sending/Receiving Faxes" has been changed.

### **a** <Alarm Volume>

Adjust the volume of the tone that sounds when the sending or receiving faxes is complete (except when printing received faxes) and the volume of the tone that sounds when a fax is canceled or ends due to an error. To mute the sound, press  several times to set the volume to the far left.



**b** <Monitor Volume>

Adjust the volume of the following tones. To mute the sound, press  several times to set the volume to the far left.

- The tone that sounds when sending faxes
- The tone that sounds when printing of a received fax is complete, and the tone that sounds when a fax ends due to an error

## Basic Operations ► Entering Sleep Mode

---

The description in "NOTE" of "Energy Consumption in Sleep Mode" has been changed.

### NOTE

#### When using a wireless LAN or Bluetooth also while in sleep mode

- Set <Sleep Mode Energy Use> to <High>.

## Managing the Machine ► Managing Users ► Configuring the Personal Authentication Management Settings ► Importing/Exporting User Data

---

The description of "NOTE" in "**f** [Import Method:]" in step 5 of "Automatically Importing User Data" has been changed (the fifth bullet point changed).

**f** [Import Method:]

Select whether to import only updated or added user data, or all user data.

### NOTE

- If you select [Perform full import] and a user with the same user name is already registered, the user information is overwritten.
- When importing information of a user who accesses the Advanced Box with SMB, specify the appropriate value in the "password" column. If you export the data from the machine and import it to the other machine without performing the above operation, authentication may fail. (The value is "\*\*\*\*\*" when exported.)
- When performing a complete import, any users not listed in the imported files are deleted from the machine. However, "-----" and "Administrator", which are registered by default, will remain even if they are not listed in the imported files.
- "User Authentication Format" is the only file format that is supported. Also, the "uid" column is required.
- Note that if you are using a server that does not support SMB v3.0 encrypted communication, user data travels unencrypted across communication paths while it is being obtained.

## Managing the Machine ► Managing the Machine from a Computer (Remote UI) ► Managing the Logs

---

The description of "NOTE" in step 5 of "Exporting Logs Automatically" has been changed (the eighth bullet point changed).

### NOTE

- After automatic exporting of the audit logs has succeeded, the collected audit logs are automatically deleted. Audit logs cannot be deleted manually.

- After automatic exporting and deleting of the audit logs have succeeded, each log is generated. If other log collections do not occur by the next automatic export time, the audit log will not be automatically exported.
- You can also manually export audit logs from the Remote UI.
- If automatic exporting fails, the machine will retry multiple times. An error message is displayed on the control panel of the machine if automatic exporting fails even once.
- Specify an SMB server for Windows Server 2012 or later, or Windows 8 or later.
- If the machine is turned OFF, exporting will not be performed, even at the specified time. Also, it will not be performed when the machine recovers.
- If the machine is in the Sleep mode, it will automatically recover and perform exporting at the specified time.
- Note that if you are using a server that does not support SMB v3.0 encrypted communication, audit log data travels unencrypted across communication paths while it is being automatically exported.
- Depending on your environment, automatic exporting of logs may be performed later than the specified time.

**Settings/Registration ▶ <Preferences> ▶ <Timer/Energy Settings>**

The Setting Description in "<Sleep Mode Energy Use>" has been changed (<Compensate for Network Comm.> deleted).

Item	Setting Description	DeviceAdmin	NetworkAdmin	Can be set in Remote UI	Device Information Delivery Available	Import All Function	Name of Item When Exporting with the Remote UI
<Sleep Mode Energy Use>	<Low>, <High>	Yes	Yes	Yes	Yes	C	Settings/Registration Basic Information

**Settings/Registration ▶ <Preferences> ▶ <Timer/Energy Settings>**

The description in "NOTE" in "<Sleep Mode Energy Use>" has been changed (description of the first bullet point changed).

- NOTE**
- When performing wireless communication while <Wireless LAN Settings> or <Use Bluetooth> is enabled, <Sleep Mode Energy Use> changes to <High>.
  - If the energy consumption level is set to <Low>, communication failure may occur, depending on the network utility software you are using. To avoid this, press the Energy Saver key to cancel the Sleep mode before using the machine.

**Settings/Registration ▶ <Preferences> ▶ <Network>**

The description in "NOTE" of "<Select Interface>" has been changed.

## NOTE

- When either <Wireless LAN> or <Wired LAN + Wireless LAN> is selected, <Sleep Mode Energy Use> will be set to <High>.

### Settings/Registration ► <Preferences> ► <Network> ► <Bluetooth Settings>

The description in "NOTE" of "<Use Bluetooth>" has been changed.

## NOTE

- If you set this to <On>, <Sleep Mode Energy Use> changes to <High>.

### Settings/Registration ► <Preferences> ► <Network> ► <TCP/IP Settings>

The description in "<Specify SMB Server Version>" has been changed (description of the bottom row of the table deleted).

Item	Setting Description	DeviceAdmin	NetworkAdmin	Can be set in Remote UI	Device Information Delivery Available	Import All Function	Name of Item When Exporting with the Remote UI
<Specify SMB Server Version>	<1.0>: <On>, <Off>	Yes	Yes	Yes	No	C	Settings/Registration Basic Information
	<2.0>: <On>, <Off>	Yes	Yes	Yes	No	C	Settings/Registration Basic Information
	<3.0>: <On>, <Off>	Yes	Yes	Yes	No	C	Settings/Registration Basic Information

### Settings/Registration ► <Preferences> ► <Network> ► <TCP/IP Settings>

The description in "<Specify SMB Client Version>" has been changed (description of the bottom row of the table deleted).

Item	Setting Description	DeviceAdmin	NetworkAdmin	Can be set in Remote UI	Device Information Delivery Available	Import All Function	Name of Item When Exporting with the Remote UI
<Specify SMB Client Version>	<1.0>: <On>, <Off>	Yes	Yes	Yes	No	C	Settings/Registration

Item	Setting Description	DeviceAdmin	NetworkAdmin	Can be set in Remote UI	Device Information Delivery Available	Import All Function	Name of Item When Exporting with the Remote UI
							Basic Information
	<2.0>: <On>, <Off>	Yes	Yes	Yes	No	C	Settings/Registration Basic Information
	<3.0>: <On>, <Off>	Yes	Yes	Yes	No	C	Settings/Registration Basic Information

### Adjusting Print and Finish Quality ► Setting the Dither Pattern

The description in Step 2 has been changed (description of the third bullet point changed).

## 2 Select the dither pattern.

- <Pattern 1>: The default setting.
- <Pattern 2>: This setting enhances reproduction of edge areas of the printed image.
- <Pattern 3>: This setting is ideal for reproducing finely detailed color images.
- <Pattern 4>: This setting enhances reproduction of highlight areas of color images.

# Changes to Related Manuals

<b>Changes to Related Manuals .....</b>	<b>36</b>
<b>Changes to Setup for Linking with Mobile Devices Administrator Guide .....</b>	<b>37</b>

## Changes to Related Manuals

---

80L4-00L

This section describes changes that apply to the related manuals for this machine.

- ▶ **Changes to Setup for Linking with Mobile Devices Administrator Guide(P. 37)**

# Changes to Setup for Linking with Mobile Devices

## Administrator Guide

80L4-00R

### Mobile Functions

With Canon PRINT Business version 8.0 and later, you can scan and then email/fax jobs using a mobile device. Originals are scanned and sent from a machine using the settings saved on the mobile device.


### Mobile Functions ▶ Mobile Functions and Functions Available by Linking Mobile Devices with a Machine

	Scanning and then emailing a scanned document	Faxing
AirPrint	No	No* <sup>1</sup>
Canon PRINT Business (for iOS)	Yes	Yes
Canon PRINT Business (for Android)	Yes	Yes
Canon Print Service	No	No
Mopria®	No	No
Default Print Service	No	No

\*<sup>1</sup> Documents on a Mac can be sent.

### Configuring the Machine According to the Connection Function of the Mobile Device ▶ Step 1. Configuring the Machine for the Application of the Mobile Device to Connect ▶ For Canon PRINT Business

## 1 Preparation for Using the Scan and Email/fax Functions

 ▶ <Management Settings> ▶ <License/Other> ▶ <Allow Jobs to Be Performed from Mobile Device> ▶ <On> (default: <Off>)

### NOTE:

- You can configure the settings so that jobs cannot be performed from a mobile device without first entering the PIN shown on the machine.

 ▶ <Management Settings> ▶ <License/Other> ▶ <Allow Jobs to Be Performed from Mobile Device> ▶ <On>, then set <Authenticate with PIN Code for Scan Jobs> → <On> (default: <On>)

# Changes for Each Version

<b>Changes for Each Version</b> .....	39
<b>Changes in Ver. 3.12</b> .....	40



## Changes for Each Version

---

80L4-00A

This section lists all the changes in each version.

### ▶ Changes in Ver. 3.12(P. 40)

## Changes in Ver. 3.12

80L4-00C

The changes in Platform Version Ver. 3.12 are listed below. The functions and settings listed here may not be available on some models. For details, see the descriptions in the links in each change.

▶ **Changes to Functions(P. 40)**

▶ **Changes to Settings/Registration(P. 40)**

### Changes to Functions

- Support for changing the secondary transfer voltage (the voltage that transfers toner to the paper) for the registered custom paper
  - ▶ **Changes to the Secondary Transfer Voltage (Ver. 3.12-)(P. 7)**
- Change to the number of sheets in the Eco (Staple-Free) mode
  - ▶ **Changes to the Eco (Staple-Free) mode (Ver. 3.12-)(P. 11)**
- Process for removing paper jam when the inner finisher is installed added
  - ▶ **Changes Related to Clearing Paper Jams(P. 13)**
- Changes to specifications (Send functions/Printer functions)
  - ▶ **Changes to System Specifications(P. 17)**

### Changes to Settings/Registration

- <Adj. Lead Edge Sec. Transfer Volt.> and <Correct Tail End Toner Application> added
  - ▶ **<Adj. Lead Edge Sec. Transfer Volt.>/< Correct Tail End Toner Application> (Ver. 3.12-)(P. 21)**
- <Allow Jobs to Be Performed from Mobile Device> added
  - ▶ **<Allow Jobs to Be Performed from Mobile Device> (Ver. 3.12-)(P. 24)**

# Third Party Software

**Third Party Software** ..... 42

## Third Party Software

---

80L4-00F

See the HTML manual for information on third-party software for each version. You can view the HTML manual from the online manual site (<https://oip.manual.canon/>).

This Font Software is licensed under the SIL Open Font License, Version 1.1.

This license is copied below, and is also available with a FAQ at: <http://scripts.sil.org/OFL>

-----  
SIL OPEN FONT LICENSE Version 1.1 - 26 February 2007  
-----

#### PREAMBLE

The goals of the Open Font License (OFL) are to stimulate worldwide development of collaborative font projects, to support the font creation efforts of academic and linguistic communities, and to provide a free and open framework in which fonts may be shared and improved in partnership with others.

The OFL allows the licensed fonts to be used, studied, modified and redistributed freely as long as they are not sold by themselves. The fonts, including any derivative works, can be bundled, embedded, redistributed and/or sold with any software provided that any reserved names are not used by derivative works. The fonts and derivatives, however, cannot be released under any other type of license. The requirement for fonts to remain under this license does not apply to any document created using the fonts or their derivatives.

#### DEFINITIONS

"Font Software" refers to the set of files released by the Copyright Holder(s) under this license and clearly marked as such. This may include source files, build scripts and documentation.

"Reserved Font Name" refers to any names specified as such after the copyright statement(s).

"Original Version" refers to the collection of Font Software components as distributed by the Copyright Holder(s).

"Modified Version" refers to any derivative made by adding to, deleting, or substituting -- in part or in whole -- any of the components of the Original Version, by changing formats or by porting the Font Software to a new environment.

"Author" refers to any designer, engineer, programmer, technical writer or other person who contributed to the Font Software.

#### PERMISSION & CONDITIONS

Permission is hereby granted, free of charge, to any person obtaining a copy of the Font Software, to use, study, copy, merge, embed, modify, redistribute, and sell modified and unmodified copies of the Font Software, subject to the following conditions:

- 1) Neither the Font Software nor any of its individual components, in Original or Modified Versions, may be sold by itself.
- 2) Original or Modified Versions of the Font Software may be bundled, redistributed and/or sold with any software, provided that each copy contains the above copyright notice and this license. These can be included either as stand-alone text files, human-readable headers or in the appropriate machine-readable metadata fields within text or binary files as long as those fields can be easily viewed by the user.
- 3) No Modified Version of the Font Software may use the Reserved Font Name(s) unless explicit written permission is granted by the corresponding Copyright Holder. This restriction only applies to the primary font name as presented to the users.
- 4) The name(s) of the Copyright Holder(s) or the Author(s) of the Font Software shall not be used to promote, endorse or advertise any Modified Version, except to acknowledge the contribution(s) of the Copyright Holder(s) and the Author(s) or with their explicit written permission.
- 5) The Font Software, modified or unmodified, in part or in whole, must be distributed entirely under this license, and must not be distributed under any other license. The requirement for fonts to remain under this license does not apply to any document created using the Font Software.

#### TERMINATION

This license becomes null and void if any of the above conditions are not met.

#### DISCLAIMER

THE FONT SOFTWARE IS PROVIDED "AS IS", WITHOUT WARRANTY OF ANY KIND, EXPRESS OR IMPLIED, INCLUDING BUT NOT LIMITED TO ANY WARRANTIES OF MERCHANTABILITY, FITNESS FOR A PARTICULAR PURPOSE AND NONINFRINGEMENT OF COPYRIGHT, PATENT, TRADEMARK, OR OTHER RIGHT. IN NO EVENT SHALL THE COPYRIGHT HOLDER BE LIABLE FOR ANY CLAIM, DAMAGES OR OTHER LIABILITY, INCLUDING ANY GENERAL, SPECIAL, INDIRECT, INCIDENTAL, OR CONSEQUENTIAL DAMAGES, WHETHER IN AN ACTION OF CONTRACT, TORT OR OTHERWISE, ARISING FROM, OUT OF THE USE OR INABILITY TO USE THE FONT SOFTWARE OR FROM OTHER DEALINGS IN THE FONT SOFTWARE.