



Auto Loop Application
User Manual

Table of Contents

- Introduction 3
 - Before Using the Application 3
 - What Is Possible With the Auto Loop Application 3
 - About this Manual 3
 - Operating Environment 4
 - Supported Cameras 4
- Starting / Stopping Applications 5
 - Starting Applications 5
 - Opening the Application's Settings Screen 6
 - Stopping Applications 6
- Screen Configuration 7
- Setting Procedure 8
 - Setting a Preset 8
 - Setting the Route 9
 - Setting the Automatic Loop 10
 - Starting/Stopping the Automatic Loop 10
 - Initializing the Settings 11
- Others 12
 - Troubleshooting 12
 - Error Messages 12
 - Trademarks 13
 - Third Party Software 13

Introduction

This document explains Auto Loop Application RA-AL001 (hereafter referred to as "this application") settings and operations. Carefully read this document before use to ensure correct use of this application.

Before Using the Application

This application is intended for exclusive use with compatible Canon remote cameras (hereafter referred to as "cameras"). For details regarding installation, refer to the License Activation Tool User Manual. Canon shall assume no liability for any outcome of using this application.

What Is Possible With the Auto Loop Application

This application allows you to automatically repeat pre-registered regular pan/tilt/zoom operations. The main uses for this application are the following:

Shooting using an automatic loop that cycles through a set of registered viewing angles

- You can set a repeating pan/tilt/zoom operation, transitioning smoothly between pre-registered viewing angles (up to 4 viewing angles).
- You can set each viewing angle's stop time, transition speed between viewing angles and enable/disable the Fade Effect.
- You can choose between a circular loop (in a forward or reverse direction) or a back and forth motion for the repeating operation.
- You can register up to 5 loop settings (each consisting of up to 4 viewing angles), and switch between them.

For details on camera operation and features, refer to the camera's User Manual. Also, make sure to configure initial camera settings before using this application.

When the automatic loop is active, performing operations using a function other than this application may stop the automatic loop or result in unintended behavior. Some features and settings are not supported depending on the camera you are using.

About this Manual

Symbols and Icons Used in This Document



Cautions and restrictions during operation. Make sure to read these carefully.



Supplementary descriptions and reference information.

- For the most part, screens shown in this manual were captured on a computer running Windows 10. Actual screens may differ slightly.

Operating Environment

For details on the operating environment of this application, refer to the camera's User Manual.

■ Supported Cameras

To see which cameras are compatible, check the compatible models listed on the product download page.

Note

When using a mobile environment, it is recommended to use a screen size of 10 inches (or larger) in landscape mode.

Starting / Stopping Applications

Starting Applications

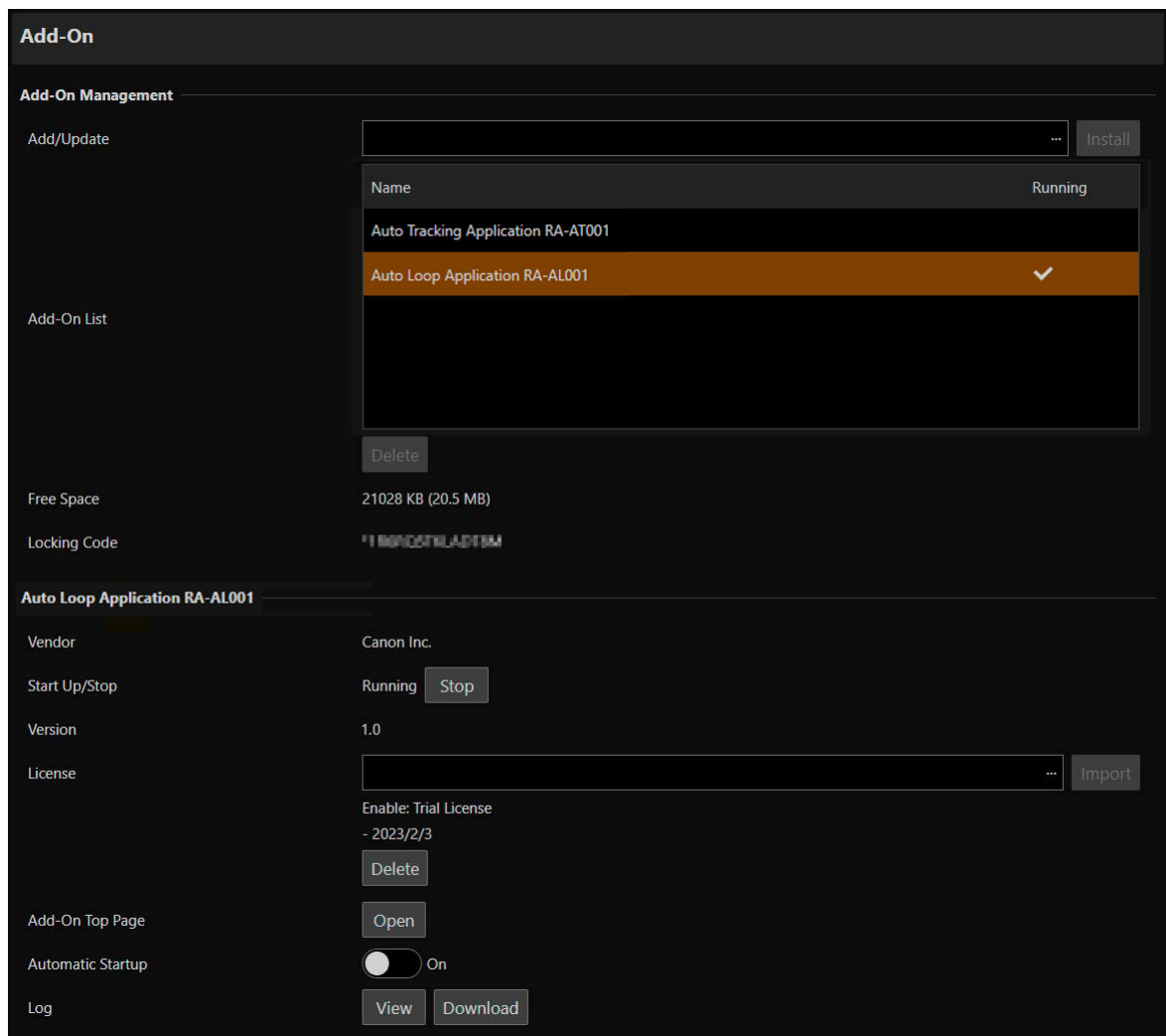
Applications are started from the camera's Settings Page. Only an administrator account can start applications.

- 1 Open the camera's Settings Page > [⚙️ System] > [System] > [Add-On].
- 2 Select the application to start from [Add-On List].
- 3 Click [Start Up/Stop] > [Start Up].

The selected application starts, the application status changes to [Running] and a check mark appears under [Running] in the [Add-On List] area.

Note

If [Automatic Startup] is set to [On], the application starts automatically when the camera is booted up.



Add-On

Add-On Management

Add/Update ...

Name	Running
Auto Tracking Application RA-AT001	
Auto Loop Application RA-AL001	✓

Add-On List

Free Space 21028 KB (20.5 MB)

Locking Code *1 INQOSTKLAETBM

Auto Loop Application RA-AL001

Vendor Canon Inc.

Start Up/Stop Running

Version 1.0

License ...

Enable: Trial License
- 2023/2/3

Add-On Top Page

Automatic Startup On

Log

Opening the Application's Settings Screen

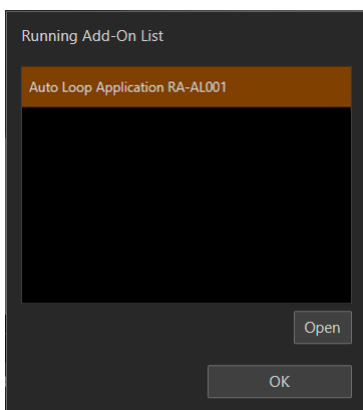
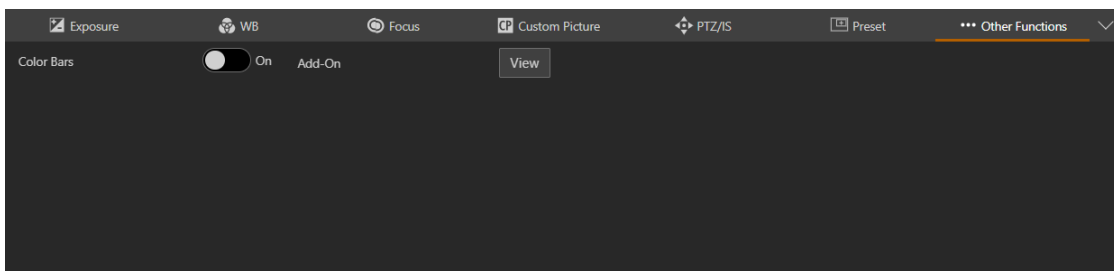
The application's settings screen is opened from the camera's Settings Page.

- 1 Click [📷 Camera Control 1] > [⋮ Other Functions] > [Add-On] > [View] from the camera's Settings Page.
The running Add-On list is displayed.

- 2 Select the application to be launched from [Running Add-On List] and click [Open].
The application's settings screen window is displayed.

Note

- For a single camera, do not open and operate the settings screen of multiple PTZ operating applications simultaneously.
- In case [View] cannot be selected or the application to be launched is not displayed on [Running Add-On List], launch the application using an administrator account (P. 5).
- An administrator can also open the settings screen from the camera's Settings Page by clicking [⚙ System] > [System] > [Add-On], selecting the application to be started from the Add-On list, then clicking [Add-On Top Page] > [Open].



Stopping Applications

Applications are stopped from the camera's Settings Page. Only an administrator account can stop applications.

- 1 Open the camera's Settings Page > [⚙ System] > [System] > [Add-On].
- 2 Select the application to stop from [Add-On List].
- 3 Click [Start Up/Stop] > [Stop].

Once you stop the application, the settings screen is closed, the application's status changes to [Stop] and the check mark under [Running] in the [Add-On List] area disappears.

Screen Configuration



Video Display Area

The camera's video is displayed.

Pan Slider

Move the camera angle left or right. Use the ◀ or ▶ button to fine-tune the position.

Tilt Slider

Move the camera angle up or down. Use the ▲ or ▼ button to fine-tune the position.

Zoom Slider

Move up to zoom in (telephoto) or down to zoom out (wide angle).
Use the T or W button to fine-tune the position.

Loop Settings Area

Area for detailed loop settings and operation.

Preset Settings Area

Area for settings of viewing angles (presets) for the loop operation.

Route Settings Area

Area for settings and operation of transitions between presets (route).

Language List

Select the displayed language.

Application Info.

Check information related to the application.

Setting Procedure

This section explains the application's basic operation. The setting procedure is explained in the following order: setting the preset viewing angles for the loop, setting the route for the viewing angle transition, and setting the loop that follows the set route.

Important

Make sure to save any changes made to the automatic loop settings. Otherwise, changed settings will not be saved if the application is stopped or the camera is turned off.

Setting a Preset

This section explains how to set the viewing angles (presets) used during the loop operation. Up to four presets can be registered for a single loop setting.




1 Select the loop number (①).

You can register five loop settings with the application. If registered in advance, you can easily select the required loop setting to start it automatically. You can also assign a name for each setting.

2 Register/update a preset (②).

(1) Use the pan/tilt/zoom slider to display the desired viewing angle.

(2) Click  ([PTZ Save]) to save the corresponding preset viewing angle.

- Data is saved to the camera's presets no. 81 to 100. Previously registered presets will be overwritten.
- Camera settings are not saved.

(3) Repeat steps 1 and 2 to register/update the required presets.

Note

If you click , the corresponding preset angle is displayed and  is shown under [Status].

3 Set the preset's stop time (③).

Set the wait time (in seconds) before automatically moving to the next preset viewing angle during the loop operation. The stop time can be set from 0 to 99999 seconds.

Note

Even if the stop time is set to zero, when [Fade Mode] is set to [On] (P. 9), at times it may appear as if the transition has stopped.

4 Save the settings (④).

Save the current loop number (1 to 5) settings to the camera.

Setting the Route

This section explains how to set the route that transitions between preset viewing angles.



1 Activate the presets to use for the automatic loop (①).

: If you check a preset it will be activated and included as one of the viewing angles used during the loop operation. The route is set according to the number of active presets.

Note

- Two or more active presets are necessary for an automatic loop.
- If a preset has not been registered, is shown under [Status].

2 Check the route (②).

The currently set route is displayed.

Note

If you enable/disable a preset used in the automatic loop (①), or if a preset is updated, check the route settings (②, ③, ④) and set them again if necessary.

3 Set the Fade Mode (③).

You can switch the pan/tilt speed settings for each route.

- If [Fade Mode] is set to [On], the speed level will be lower than the one set for [PTZ/IS] > [Pan/Tilt Acceleration] on the camera's Settings Page.
- If [Fade Mode] is set to off, the speed will be the one set for [PTZ/IS] > [Pan/Tilt Acceleration] on the camera's Settings Page.

4 Set the route's speed level (④).

Set the maximum preset transition speed level.

5 Preview the set route (⑥).

: Starts the preview of the preset angle transition from the corresponding route's starting position.

: Stops the preview.

Note

- During preview, an arrow indicating the moving direction is displayed under [Direc.].
- During preview, the time required for the transition is displayed (⑤).

6 Save the settings (⑦).

Save the current loop number (1 to 5) settings to the camera.

Setting the Automatic Loop

This section explains how to set the automatic loop operation.



1 Select the loop number (①).


Select the loop number used for the automatic loop. You can also set a name for the loop settings as needed.

2 Select the loop operation/direction (②).

 : The loop cycles in order through the currently active presets.

 : Forward direction.

 : Reverse direction.

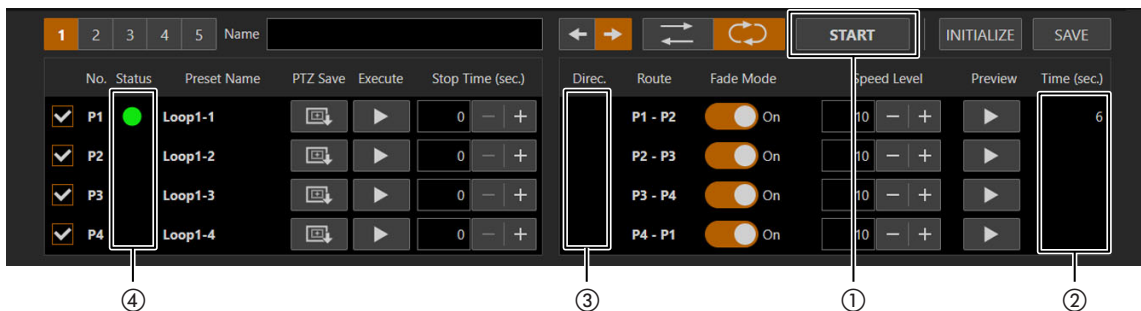
 : The loop cycles through the active presets in a back and forth motion (starts in forward direction, then switches to reverse when it reaches the end).

3 Save the settings (③).

Save the current loop number (1 to 5) settings to the camera.


Starting/Stopping the Automatic Loop

This section explains how to start/stop the automatic loop.



1 Start/stop the automatic loop (①).


 : Moves to the route's starting position and starts the loop operation.

 : Stops the loop operation.

Note

- The time required for the route's transition is displayed (②).
- Depending on the speed level, the pan/tilt/zoom stopping times may not be simultaneous. The greater the difference in the amount of movement between pan/tilt/zoom in the preset transition, the more likely this is to occur.

When the automatic loop is being executed:

- When in movement, an arrow indicating the route's direction (③) is displayed.
- When a preset stops,  indicating the current position (④) is displayed.

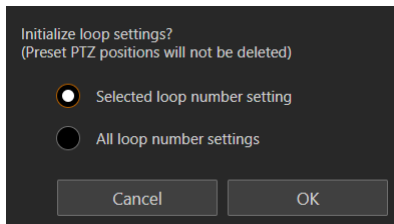
Initializing the Settings

This section explains how to initialize the settings in an individual or batch operation.



1 Click [INITIALIZE] (①).

A selection screen showing the loop number options to be initialized is displayed.



2 Select the loop number to be initialized and click [OK].

The following settings are not deleted:

- Preset Name
- Preset PTZ position

Troubleshooting

Before contacting the retailer from where the product was purchased or a Canon sales representative, check the following items.



Note

- For information on troubleshooting for the camera, controller, etc., refer to each manual.
- Some features and settings are not supported depending on the camera you are using.

Problem	Solution
The application does not start.	<ul style="list-style-type: none"> • Check that the license has been correctly authenticated. • Check that the camera's date and time settings are correct.
The application does not open.	<ul style="list-style-type: none"> • Check that the application is running.
The automatic loop settings are not saved.	<ul style="list-style-type: none"> • Make sure to save any changes made to the settings. If the camera or the application is restarted without saving, changes will not be saved.
The route's time display disappeared.	<ul style="list-style-type: none"> • If preset or route settings are changed, the route's time display will disappear. Preview or start the loop operation again.
The automatic loop stops when operating pan/tilt/zoom using a function other than this application.	<ul style="list-style-type: none"> • When the automatic loop is active, performing pan/tilt/zoom operations using Remote Camera Control Application or a function other than this application will stop the automatic loop. Once stopped, operation using a function other than this application is possible. It may take some time for the automatic loop to stop when [Fade Mode] is set to [On].
The application's operation is slow. The network streaming video presents frame dropping.	<ul style="list-style-type: none"> • Set a lower setting for [System] > [Video and Audio] > [IP Streaming Video] > [Mainstream] > [Target Bit Rate (Mbps)] from the camera's Settings Page. • Reduce the number of video display screens displayed by a client at the same time.
The camera does not behave as intended. <ul style="list-style-type: none"> – Movement to the desired viewing angle is not achieved. – Movement to the set preset position is not achieved. – During auto loop, movement does not follow the correct route. 	<ul style="list-style-type: none"> • From the camera's Settings Page, check if a range of movement has been set for the camera.

Error Messages


If an error message appears at the top of the screen, proceed as suggested below.

Message	Solution
Preset not registered.	The active preset has not been registered. Register a preset (P. 8) and then activate it (this application's preset data is stored in the camera as preset no. 81 to 100).
Camera was operated so loop operation will be stopped.	If pan/tilt/zoom operations are performed using Remote Camera Control Application or a function other than this application, this application's pan/tilt/zoom operation is stopped.
Settings were changed so loop operation will be stopped.	If application settings are changed from the Remote Camera Controller, the pan/tilt/zoom control from Auto Loop Application is stopped.
Cannot view video because there are more connections to the camera than the maximum number of clients.	<ul style="list-style-type: none"> • Disconnect other clients connected to the camera. • Increase the number of clients that can be connected from [System] > [Server] > [HTTP/Video] > [Video Server] > [Maximum Number of Clients] on the camera's Settings Page.
Could not connect to the camera.	Cannot connect to the camera. Check the camera settings, or restart the camera.

Trademarks

- Microsoft and Windows are trademarks or registered trademarks of Microsoft Corporation in the United States and other countries.
- Windows is legally recognized as the Microsoft Windows Operating System.
- All other company or product names used in this document are trademarks or registered trademarks of their respective holders.

Third Party Software

This camera contains third party software modules. Confirm each module's license conditions in  > [Third Party Software License Conditions] on the auto loop settings screen.

The information in this document is verified as of June 2024. Subject to change without notice.