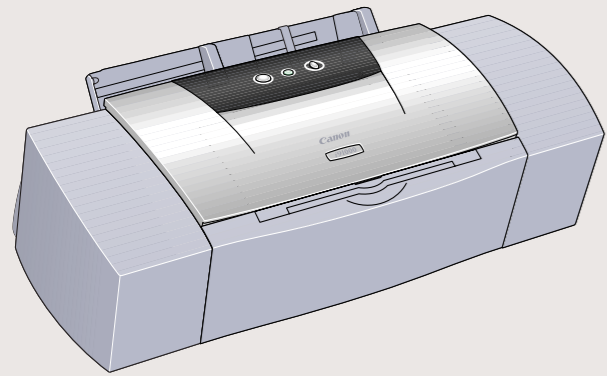
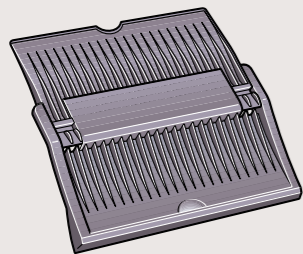


1 Unpack the Printer

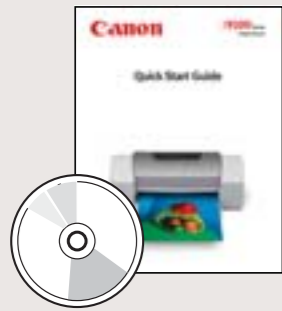
- Carefully remove all items from the box.



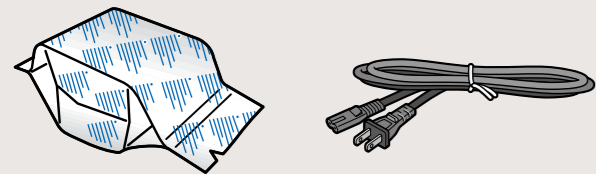
i9100 Series Photo Printer



Paper Rest

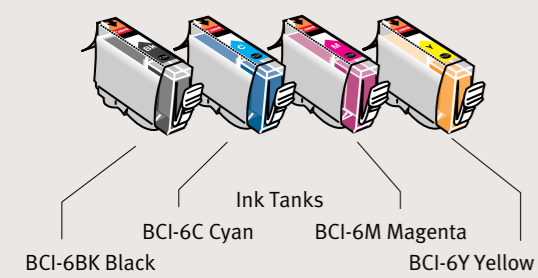


Documentation and Software Kit



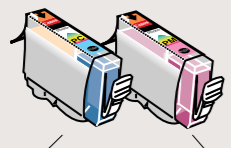
i9100 Series Print Head

Power Cord



Ink Tanks

BCI-6BK Black BCI-6C Cyan BCI-6M Magenta BCI-6Y Yellow

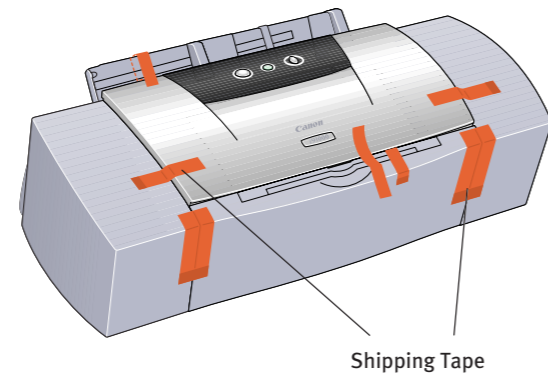


BCI-6PC Photo Cyan BCI-6PM Photo Magenta

NOTE: USB cable is not included.

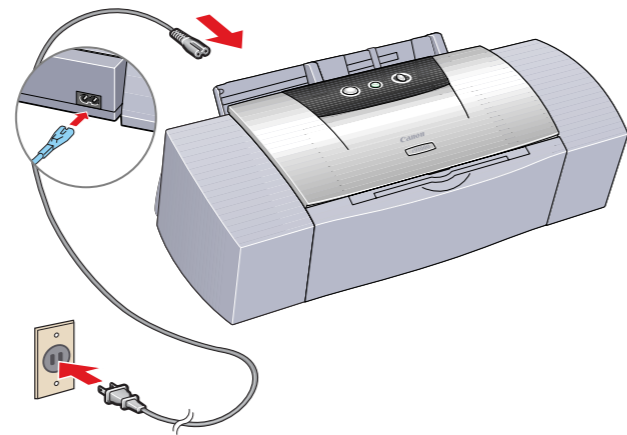
2 Prepare the Printer

- Remove the shipping tape from the front of the printer.

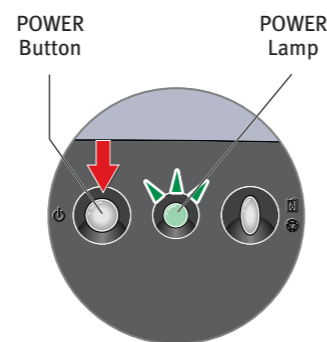


Shipping Tape

- Plug the power cord into the back of the printer and connect the other end to a power outlet.



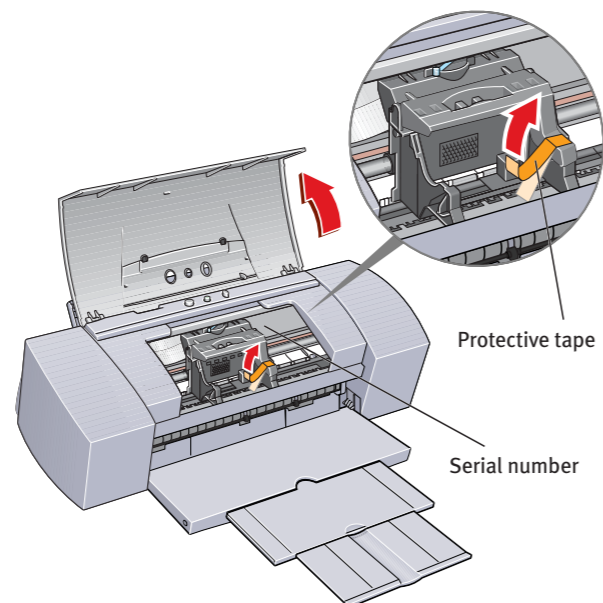
- Press the POWER button.



POWER Button

POWER Lamp

- Open the front cover. The print head holder automatically moves to the center. Remove the protective tape.



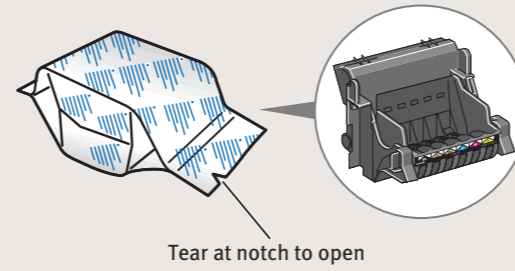
Protective tape

Serial number

Write down the serial number located to the right of the print head. You will need this later to register the product.

3 Install the Print Head

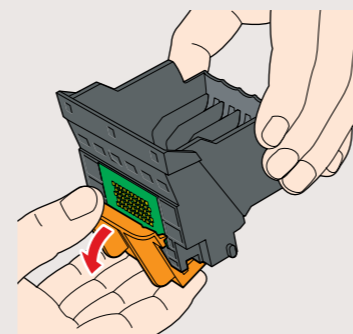
- Remove the print head from its package.



Tear at notch to open

- Remove the orange protective cap from the print head.

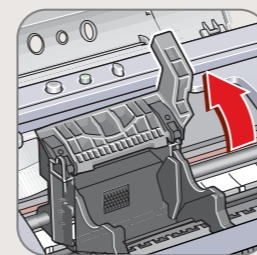
NOTE: Do not touch the electrical contacts.



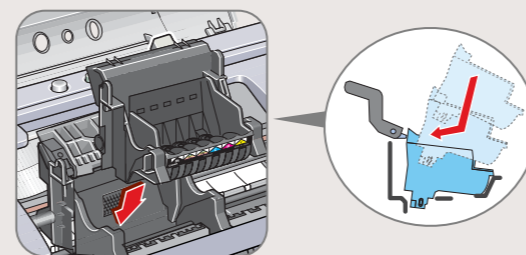
Print Head nozzles

Electrical contacts

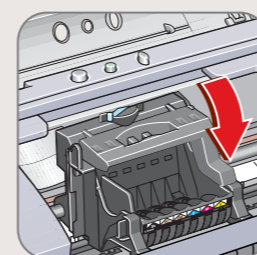
- Raise the lock lever on the printer.



- Slide the print head into the holder. The print head will rest at a slight angle.

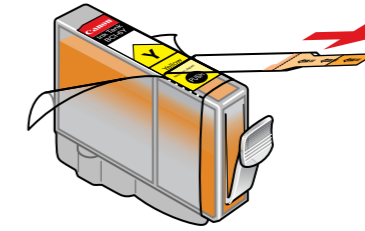


- Lower the lock lever and press it down until it locks into place.



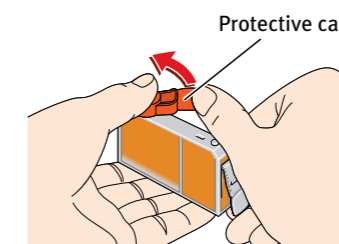
4 Install the Ink Tanks

- Peel back the orange tab and completely remove the plastic wrapper from the Yellow Ink Tank (BCI-6Y).



- Twist off and discard the orange protective cap.

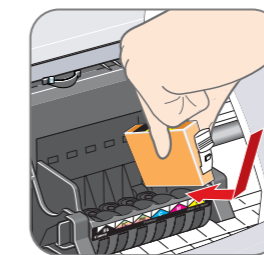
NOTE: To avoid spilling ink, never press on the sides of an ink tank.



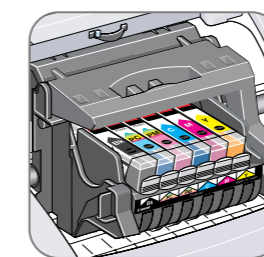
Protective cap

- Insert the ink tank into the correct slot. (Refer to the color guide on the print head).

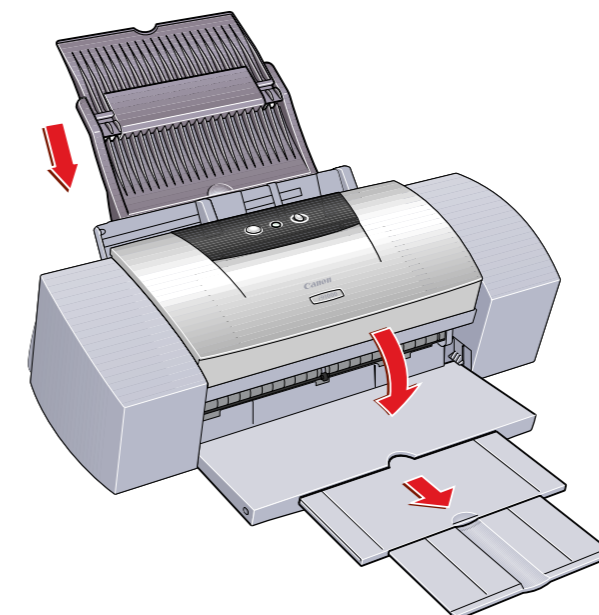
Press down until the ink tank locks into place.



- Insert the remaining five ink tanks into their assigned slots.



- Close the front cover, attach the paper rest and extend the paper output tray.

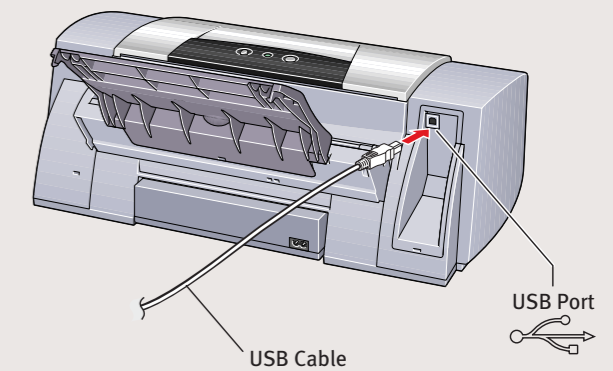
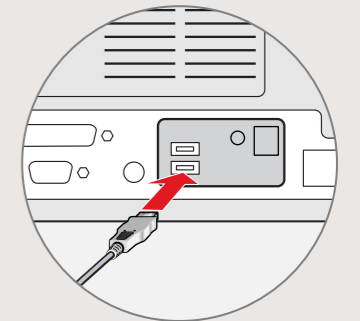


5 Connect the Printer To Your Computer

- TURN THE PRINTER OFF.**

IMPORTANT: Be sure the printer is off before continuing, or the computer will attempt to install the printer driver before the printer is ready.

- Connect one end of the USB cable to the computer, the other to the printer.



USB Cable

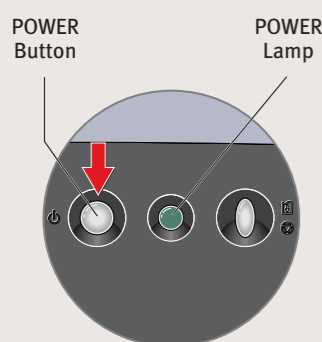
USB Port

Continue with Step 6 on side two.



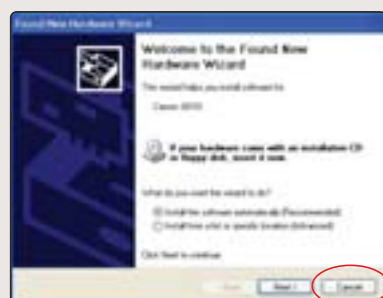
6 Install the Printer Driver (Windows®)

- 1 Be sure to **TURN THE PRINTER OFF** before continuing.



NOTE: For Windows® XP or Windows 2000, log on to Windows as a member of the Administrators group before continuing.

IMPORTANT: If you see the Found New Hardware Wizard, click **Cancel**.



- 2 Close any open software applications, then insert the “i9100 Setup Software & User’s Guide” CD-ROM. The setup program should run automatically.

NOTE: If the setup program does not run, click **Start**, then **Run**, then type D:\msetup.exe, where D is your CD-ROM drive.

- 3 Read the License Agreement, then click **Yes** to continue.
- 4 When the main menu appears, click **Install**.

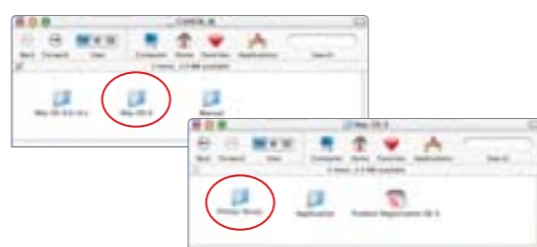


NOTE: If you are prompted to restart Windows, remove the CD-ROM, then click **OK**. After the computer restarts, insert the CD-ROM and continue.

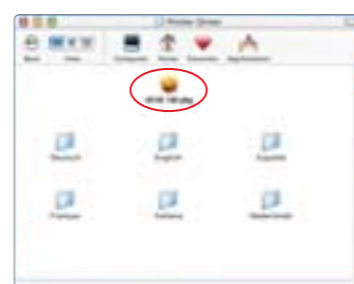
6 Install the Printer Driver (Macintosh®)

- 1 Turn on your Mac and your printer and insert the “i9100 Setup Software & User’s Guide” CD-ROM.

- 2 Double-click the CD-ROM icon, then the **Mac OS X** folder, then the **Printer Driver** folder.



- 3 Double-click the **i9100 180.pkg** icon.



- 4 When the “Authenticate” screen appears, enter your administrator name and password, then click **OK**.

- 5 When the “Welcome to the BJ printer driver Installer” screen appears, click **Continue**.

- 6 Read the Software License Agreement and click **Continue**, then click **Agree**.

- 7 Select a destination for the printer driver to be installed. Then click **Continue**.



- 5 When the Printer Port window appears, **TURN THE PRINTER ON**. The software will begin identifying the printer port being used.



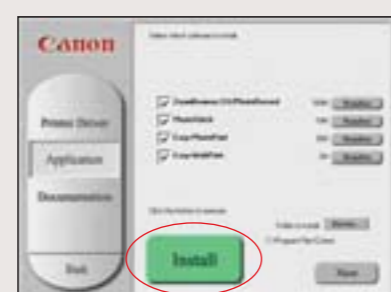
IMPORTANT: If your computer cannot detect a printer port, refer to the **Troubleshooting** chapter in the “i9100 Quick Start Guide” for instructions.

- 6 When the driver installation is complete, click **Finish**.

- 7 Register your product to ensure product support. Follow the on-screen instructions.



- 8 When the software menu appears, click **Install**.



- 9 When the software installation is complete, click **OK**, then **Exit**.

IMPORTANT: To ensure highest quality output, continue with **Step 7 Align the Print Head**.

7 Align the Print Head

Before using the printer, align the print head to ensure the best quality printing.

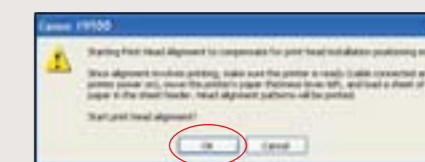
- 1 Load a sheet of blank paper in the paper rest.
- 2 Start the alignment procedure.

Windows:

- a. For Windows XP/2000 click **Start**, select **Control Panel, Printers and Other Hardware**, then **Printers and Faxes**.
- b. Right-click the **i9100 icon**, then click **Printing Preferences**.

NOTE: For Windows 98/Me click **Start**, then select **Settings, Printers**. Right-click the **i9100 icon**, then click **Properties**.

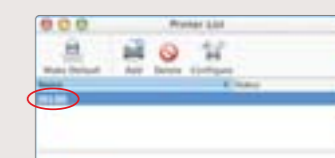
- c. Click the **Maintenance** tab, then click on the **Print Head Alignment** icon.
- d. When asked to start print head alignment, click **OK**.



- e. Follow the on-screen instructions.

Macintosh OS X:

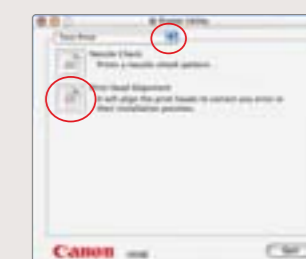
- a. Double-click the **Macintosh HD** icon, then **Applications** folder. Double-click the **Utilities** folder, then the **Print Center** icon. When the Printer List screen appears, select **i9100**.



Under Printers menu, select **Configure Printer**. Select **i9100**, and click **Select**.



- b. Click the down-arrow to select **Test Print**.
- c. Click the **Print Head Alignment** icon.



- 3 Follow the on-screen instructions.
- 4 Click **OK** (Windows) or **Send** (Macintosh) when finished.