



# Windows

MF Driver

# Installation Guide

# Contents

<b>Introduction</b> .....	2
<b>How to Use the Manual</b> .....	3
Notations Used in the Manual .....	4
<b>Disclaimers</b> .....	5
<b>Copyright</b> .....	6
<b>Trademarks</b> .....	7
<b>About the MF Driver and MF Scan Utility</b> .....	9
<b>Before Use</b> .....	11
<b>Pre-installation Check</b> .....	13
<b>About Installation</b> .....	14
<b>System Requirements</b> .....	15
<b>Installation Preparations and Precautions</b> .....	16
<b>Installation Using the Installer</b> .....	19
<b>[Easy Installation] From the DVD-ROM (Network Connection)</b> .....	20
<b>[Custom Installation] From the DVD-ROM (Network Connection)</b> .....	23
<b>[Easy Installation] From the DVD-ROM (USB Connection)</b> .....	26
<b>[Custom Installation] From the DVD-ROM (USB Connection)</b> .....	29
<b>Installing a Downloaded MF Driver (Network Connection)</b> .....	33
<b>Installing a Downloaded MF Driver (USB Connection)</b> .....	36
<b>Installing MF Scan Utility</b> .....	39
<b>Installation Without Using the Installer</b> .....	41
<b>Installing by Specifying an inf File</b> .....	42
<b>Installing Using a WSD Port</b> .....	44
<b>Uninstallation</b> .....	46
<b>Uninstalling the MF Driver</b> .....	47
<b>Uninstalling MF Scan Utility</b> .....	49
<b>Uninstall Method for Software</b> .....	50
<b>Appendix</b> .....	52
<b>Creating a Shortcut to the Online Manual</b> .....	53
Installing the Shortcut to the Online Manual .....	54
Uninstalling the Shortcut to the Online Manual .....	55

# Introduction

<b>Introduction</b> .....	2
<b>How to Use the Manual</b> .....	3
Notations Used in the Manual .....	4
<b>Disclaimers</b> .....	5
<b>Copyright</b> .....	6
<b>Trademarks</b> .....	7

# Introduction

---

- ▶ **How to Use the Manual(P. 3)**
- ▶ **Disclaimers(P. 5)**
- ▶ **Copyright(P. 6)**
- ▶ **Trademarks(P. 7)**

## How to Use the Manual

---

This explains things that you need to know in order to use this manual.

▶ **Notations Used in the Manual(P. 4)**

# Notations Used in the Manual

---

This explains symbols and settings used in this manual.

## Symbols Used in This Manual

In this manual, explanations of items and operations that must be followed while using the driver are set forth the symbols that indicate the following.



### IMPORTANT

- Indicates operational requirements and restrictions. Be sure to read these items carefully to operate the product correctly, and avoid damage to the product.



### NOTE

- Indicates a clarification of an operation, or contains additional explanations for a procedure. Reading these notes is highly recommended.

## About Settings

In this manual, setting names displayed on the computer screen are represented as shown in the following examples.

Example:

[Print]

[OK]

## Disclaimers

---

The information in this document is subject to change without notice.

CANON INC. MAKES NO WARRANTY OF ANY KIND WITH REGARD TO THIS MATERIAL, EITHER EXPRESS OR IMPLIED, EXCEPT AS PROVIDED HEREIN, INCLUDING WITHOUT LIMITATION, THEREOF, WARRANTIES AS TO MARKETABILITY, MERCHANTABILITY, FITNESS FOR A PARTICULAR PURPOSE OF USE OR NON-INFRINGEMENT. CANON INC. SHALL NOT BE LIABLE FOR ANY DIRECT, INCIDENTAL, OR CONSEQUENTIAL DAMAGES OF ANY NATURE, OR LOSSES OR EXPENSES RESULTING FROM THE USE OF THIS MATERIAL.

## Copyright

---

Copyright CANON INC. 2019

No part of this publication may be reproduced, transmitted, transcribed, stored in a retrieval system, or translated into any language or computer language in any form or by any means, electronic, mechanical, magnetic, optical, chemical, manual, or otherwise, without the prior written permission of Canon Inc.



## Trademarks

---

Microsoft, Windows, Windows Server, Internet Explorer, and Microsoft Edge are either registered trademarks or trademarks of Microsoft Corporation in the United States and/or other countries.

macOS and Safari are trademarks of Apple Inc.

Other product and company names herein may be the trademarks of their respective owners.

# About the MF Driver and MF Scan Utility

**About the MF Driver and MF Scan Utility ..... 9**

# About the MF Driver and MF Scan Utility

---

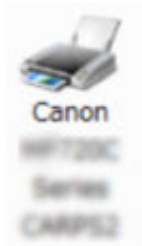
This gives an overview of the MF driver and MF Scan Utility, and explains icons displayed during installation.

The MF driver is a driver that is installed for printing, sending faxes, and scanning using a device.

As well as the MF driver explained here, MF Scan Utility and other software may be installed depending on the supported device. For details about the other software, refer to the manual of the device.

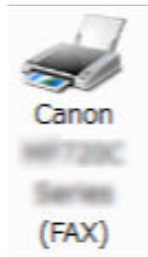
## Printer Driver

Enables you to use the device as a printer.



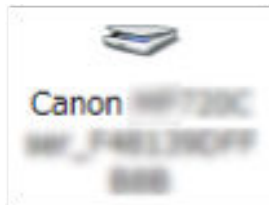
## Fax Driver

Enables you to fax printed documents via the device.



## Scanner Driver

Enables you to use the device as a scanner.



## MF Scan Utility

Can read a scanned image into applications, attach a scanned image to an email, and store it in a hard disc.



### NOTE

- Some functions in the driver software included in the accompanying DVD-ROM may not be usable depending on the operating system. The newest version is on the Canon web site. Verify your operating environment and download it if necessary.

# Before Use

**Before Use** ..... 11

## Before Use

---

- The functions that you can use may vary according to the following conditions.
  - The device you are using and its settings
  - The firmware version of the device
  - The option structure of the device
  - The driver version
  - The computer environment you are using
- The screen content, procedures, etc. displayed and described in the manual may differ from those actually displayed.
- In this manual, examples using Windows 7 are explained.

# Pre-installation Check

<b>Pre-installation Check</b> .....	13
<b>About Installation</b> .....	14
<b>System Requirements</b> .....	15
<b>Installation Preparations and Precautions</b> .....	16

## Pre-installation Check

---

This explains what you need to confirm beforehand in order to install the MF driver and software correctly.

- ▶ **About Installation(P. 14)**
- ▶ **System Requirements(P. 15)**
- ▶ **Installation Preparations and Precautions(P. 16)**

## About Installation

---

The respective installation methods shown below for installing the MF driver and MF Scan Utility are provided according to the source of the installer, installation method, and device connection configuration.

- Installer source: supplied DVD-ROM or download from the web site
- Installation method: [Easy Installation] or [Custom Installation]
- Device connection configuration: TCP/IP network connection or USB connection

Select the most appropriate installation method for the following.

### If you are using the supplied DVD-ROM

If you use the supplied DVD-ROM, you can install the MF driver, software, and manual in a single sequence from the connection between the computer and device.

Select an installation procedure according to the installation method and device connection configuration.

**When you want to install the MF driver, standard software, and manual:**

- [Easy Installation] From the DVD-ROM (Network Connection)(P. 20)
- [Easy Installation] From the DVD-ROM (USB Connection)(P. 26)

**When you want to select what to install while installing**

- [Custom Installation] From the DVD-ROM (Network Connection)(P. 23)
- [Custom Installation] From the DVD-ROM (USB Connection)(P. 29)

### If you are using an installer downloaded from the web site

If you use the installer downloaded from the web site, you can install the latest version of the MF driver and MF Scan Utility. If the MF driver or MF Scan Utility included in the supplied DVD-ROM are not compatible with the operating system of the computer you are using, install according to the following procedure.

Select an installation method according to the target device of the installation and the connection configuration.

- Installing a Downloaded MF Driver (Network Connection)(P. 33)
- Installing a Downloaded MF Driver (USB Connection)(P. 36)
- Installing MF Scan Utility(P. 39)

Also, when installing the MF driver using [Custom Installation] from the supplied DVD-ROM or a downloaded installer, you can acquire device information if you install it simultaneously with Canon Driver Information Assist Service.



#### NOTE

- If you are installing the MF driver in an IPv6 environment, install it using a WSD port.  
In an IPv6 environment, because the DVD-ROM menu is not displayed when you set the supplied DVD-ROM in the computer, you cannot install the MF driver.

## Related Topics

---

- Installing Using a WSD Port(P. 44)



# System Requirements

This explains the required system environment for using the MF driver.

## Operating Systems

Windows 7/8.1/10

Windows Server 2008/2008 R2/2012/2012 R2/2016/2019

- The scanner driver and MF Scan Utility support Windows 7/8.1/10 only.
- Printer drivers and fax drivers are supported only in network environments in the case of Server operating systems.

Some printer drivers and fax drivers may not be supplied depending on the device you are using, your country, or your region.



### NOTE

- For the support status of the newest operating systems and service packs, check the Canon web site (<https://global.canon/>).
- For details on the required system environments for software other than the MF Scan Utility, refer to the Readme file for the respective software.

## Combinations of Driver and Operating System Display Languages

Depending on the combination of supported driver languages and the display language of the operating system, correct operation may not be guaranteed. It is recommended that you install with the language selected by default when the installer starts.

## Supported Driver Languages

English / Arabic / Basque / Catalan / Chinese (Simplified) / Chinese (Traditional) / Czech / Danish / Dutch / Finnish / French / German / Hungarian / Italian / Japanese / Korean / Malay / Norwegian / Polish / Portuguese / Russian / Slovak / Spanish / Swedish / Thai / Turkish / Vietnamese

## Scope of Guaranteed Operation

	Language of operating system included in supported driver languages	Language of operating system not included in supported driver languages
Installed with language matching the operating system	Guaranteed	--
Installed with language not matching the operating system	Guaranteed* <sup>1</sup>	Not guaranteed* <sup>2</sup>
Changed to language not matching the operating system after installation	Guaranteed* <sup>1</sup>	Not guaranteed* <sup>2</sup>

\*<sup>1</sup> The layout may be broken or the driver may not be displayed correctly.

\*<sup>2</sup> Operation is only guaranteed when installed with English. However, the layout may be broken or the driver may not be displayed correctly.

## Installation Preparations and Precautions

This explains the preparations for installing the MF driver and software correctly, and precautions to take when installing.

### Installation Preparations

Before installing the MF driver and MF Scan Utility, complete the following operations.

#### Device Settings

Set the following items with the [System Management Settings] menu > [PDL Selection (Plug and Play)] of the device.

- Connection method with the device (network or USB)
- Page description language (set to match the driver you are using)

If you set [\*\*\* (V4)] for the page description language, you must install the V4 printer driver. Please download the V4 printer driver from the Canon web site (<https://global.canon/>).

For details about the setting menus, refer to the manual of the device.

#### Acquire the installer

You can acquire the installer by any of the following means.

- Download from the web site (<https://global.canon/>) (32-bit or 64-bit version)
- Supplied DVD-ROM

In some cases, the installer may be provided on a CD-ROM. If you use a CD-ROM, read CD-ROM for DVD-ROM in the explanations of the manual.

#### About Installation(P. 14)

Select the most appropriate installation method after checking the installation overview.

### Precautions to Be Taken When Installing

Take care of the following items when installing.

- If a screen requiring you to allow changes to the computer is displayed, allow the changes.
- If one of the following conditions is met, you may not be able to install the MF driver. If so, install the MF driver after logging on as a local user belonging to a group with Administrator privileges.
  - An environment in which communication between the domain controller and client operating system is not possible.
  - You are logged onto a client computer as a domain user belonging to a group with Administrator privileges.

Confirm the status of the user account you are logged on in [Computer Management] > [Local Users and Groups] > [Groups].

- If a Windows Security screen indicating that the publisher of the driver cannot be verified is displayed, allow installation.
- When acquiring driver information using the Canon Driver Information Assist Service, if a warning regarding removing Windows Firewall blocking is displayed, remove the block.
- If the software installation fails, try reinstalling after quitting all other applications. If it still fails, temporarily uninstall, restart the computer, and try reinstalling.
- If you cannot use the software after updating the operating system, uninstall the software, then reinstall it.
- If you have installed other software while running the MF Scan Utility, it is not automatically registered in the MF Scan Utility. In this case, manually register software installed afterward in the MF Scan Utility.

- When installing the MF driver, a Product Extended Survey Program is also installed. The Product Extended Survey Program is a program that automatically sends to Canon information relating to the usage state of the device every month for ten years. However, personal information and information other than for the above purposes is not sent. Also, you can disable automatic sending of information or uninstall the program at any time. If you want to turn off automatic sending, log on with an Administrator account, display [Programs and Features] or [Add or remove programs] → select [Canon Laser Printer/Scanner/Fax Extended Survey Program] → click [Change] and set in Windows.

## Related Topics

---

- ▶ **[Easy Installation] From the DVD-ROM (Network Connection)(P. 20)**
- ▶ **[Custom Installation] From the DVD-ROM (Network Connection)(P. 23)**
- ▶ **[Easy Installation] From the DVD-ROM (USB Connection)(P. 26)**
- ▶ **[Custom Installation] From the DVD-ROM (USB Connection)(P. 29)**
- ▶ **Installing a Downloaded MF Driver (Network Connection)(P. 33)**
- ▶ **Installing a Downloaded MF Driver (USB Connection)(P. 36)**
- ▶ **Installing MF Scan Utility(P. 39)**
- ▶ **Uninstalling the MF Driver(P. 47)**
- ▶ **Uninstalling MF Scan Utility(P. 49)**
- ▶ **Uninstall Method for Software(P. 50)**

# Installation Using the Installer

<b>Installation Using the Installer</b> .....	19
[Easy Installation] From the DVD-ROM (Network Connection) .....	20
[Custom Installation] From the DVD-ROM (Network Connection) .....	23
[Easy Installation] From the DVD-ROM (USB Connection) .....	26
[Custom Installation] From the DVD-ROM (USB Connection) .....	29
Installing a Downloaded MF Driver (Network Connection) .....	33
Installing a Downloaded MF Driver (USB Connection) .....	36
Installing MF Scan Utility .....	39

## Installation Using the Installer

---

This explains the procedure for installing using the installer included in the supplied DVD-ROM or the installer downloaded from the web site.

Select the procedure most suitable to the device connection configuration and installation method.

- ▶ **[Easy Installation] From the DVD-ROM (Network Connection)(P. 20)**
- ▶ **[Custom Installation] From the DVD-ROM (Network Connection)(P. 23)**
- ▶ **[Easy Installation] From the DVD-ROM (USB Connection)(P. 26)**
- ▶ **[Custom Installation] From the DVD-ROM (USB Connection)(P. 29)**
- ▶ **Installing a Downloaded MF Driver (Network Connection)(P. 33)**
- ▶ **Installing a Downloaded MF Driver (USB Connection)(P. 36)**
- ▶ **Installing MF Scan Utility(P. 39)**

## [Easy Installation] From the DVD-ROM (Network Connection)

---

This explains the procedure for automatically searching for a device on a network and installing with [Easy Installation] from the supplied DVD-ROM.

In this procedure, as well as the MF driver, standard software and the electronic manual are installed.

### Prerequisites

---

- **System Requirements(P. 15)**
- A TCP/IP Network Environment  
If you do not know the network environment you are using, check with your network administrator.
- The device must be in the same subnet as the computer you are using.
- **Installation Preparations and Precautions(P. 16)**
- When starting the computer, log on as a member of Administrators.
- [Desktop] screen display (when using Windows 8.1/Server 2012/Server 2012 R2)

### Procedures

---

#### **1 Set the DVD-ROM in the computer → click [Easy Installation].**

If the DVD-ROM menu is not displayed, click the subsequent "Open details."

In the following procedure, start the installer. For the DVD-ROM drive name, enter "D:."

- If a message prompting you to insert a DVD-ROM is displayed or if Windows Explorer is displayed: Execute [MInst.exe].
- If nothing is displayed: [Run] > enter [D:\MInst.exe] > execute [MInst.exe].

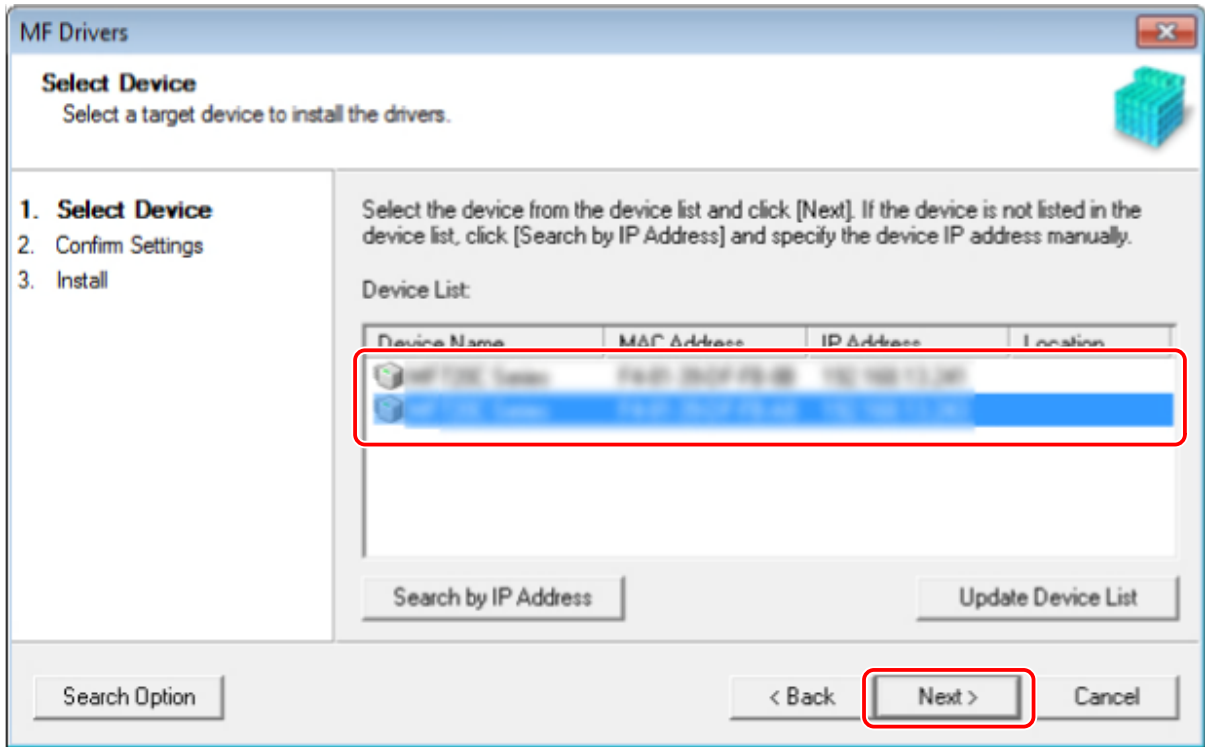
#### **2 If the [Select the Type of Connection] screen is displayed, select [Network Connection] → click [Next].**

#### **3 Click [Install].**

#### **4 Read the license agreement → click [Yes].**

#### **5 Select a language → click [Next].**

#### **6 Select the device you are using → click [Next].**



 **NOTE**

- If the device is not displayed in [Device List], check the connection state between the computer and device and the IP address settings, and click [Update Device List]. If the device is still not displayed, click [Search by IP Address] → enter the IP address of the device → click [OK]. For the IP address confirmation method, refer to the manual of the device.

**7 Check the settings → click [Start].**

**8 Install the software according to the instructions on the screen.**

**9 Eject the DVD-ROM, select [Restart Computer Now (Recommended)], and click [Restart].**

If installed correctly, an MF driver or software icon is displayed in the locations shown next. If the icon is not displayed, uninstall the MF driver or software and reinstall it.

**For a printer driver or fax driver:**

Windows Control Panel > [Devices and Printers].

**For a scanner driver:**

Windows Control Panel > [Scanners and Cameras].

**For MF Scan Utility:**

When using Windows 10:

Start menu > List of apps

When using a version other than Windows 10:

[Start] menu > App or program list > [Canon] folder > [MF Scan Utility] folder

**For other software or electronic manuals:**

Taskbar or [Desktop] screen

## Related Topics

---

- ▶ [About the MF Driver and MF Scan Utility\(P. 9\)](#)
- ▶ [Uninstalling the MF Driver\(P. 47\)](#)



## [Custom Installation] From the DVD-ROM (Network Connection)

---

This explains the procedure for automatically searching for a device on a network and installing with [Custom Installation] from the supplied DVD-ROM. With this procedure, you can specify which software and manuals you want to install.

### Prerequisites

---

- **System Requirements(P. 15)**
  - A TCP/IP Network Environment  
If you do not know the network environment you are using, check with your network administrator.
  - The device must be in the same subnet as the computer you are using.
- **Installation Preparations and Precautions(P. 16)**
  - When starting the computer, log on as a member of Administrators.
  - [Desktop] screen display (when using Windows 8.1/Server 2012/Server 2012 R2)

### Procedures

---

#### **1 Set the DVD-ROM in the computer → click [Custom Installation].**

If the DVD-ROM menu is not displayed, click the subsequent "Open details."

In the following procedure, start the installer. For the DVD-ROM drive name, enter "D:."

- If a message prompting you to insert a DVD-ROM is displayed or if Windows Explorer is displayed: Execute [MInst.exe].
- If nothing is displayed: [Run] > enter [D:\MInst.exe] > execute [MInst.exe].

#### **2 If the [Select the Type of Connection] screen is displayed, select [Network Connection] → click [Next].**

#### **3 Select the software you want to install → click [Install].**

#### **4 Read the license agreement → click [Yes].**

#### **5 Select a language → click [Next].**

#### **6 Select the device you are using → click [Next].**

**NOTE**

- If the device is not displayed in [Device List], check the connection state between the computer and device and the IP address settings, and click [Update Device List]. If the device is still not displayed, click [Search by IP Address] → enter the IP address of the device → click [OK]. For the IP address confirmation method, refer to the manual of the device.

**7 Select the driver to install → click [Next] → set as required.**

If a list of drivers corresponding to the page description language is displayed after selecting a printer driver in the [Select Driver] screen, select the driver you are going to use.

If you want to use the install destination computer as a print server, select the following.

- Select the [Select Driver] screen > [Canon Driver Information Assist Service].
- Select the [Confirm Settings] screen > [Use as Shared Printer] or [Use as Shared Fax].

**8 Check the settings → click [Start].****9 Setting the default printer and test printing.**

When setting as a default driver: select the driver → click [Next]

When test printing: select the check box of the driver

**10 Click [Exit].****11 If you selected MF Scan Utility, check the instructions on the screen → select a language and click [Next] if you want to continue with the installation.****12 Install the software according to the instructions on the screen → click [Next].****13 Eject the DVD-ROM, select [Restart Computer Now (Recommended)], and click [Restart].**

If installed correctly, an MF driver or software icon is displayed in the locations shown next. If the icon is not displayed, uninstall the MF driver or software and reinstall it.

**For a printer driver or fax driver:**

Windows Control Panel > [Devices and Printers].

**For a scanner driver:**

Windows Control Panel > [Scanners and Cameras].

**For MF Scan Utility:**

When using Windows 10:

Start menu > List of apps

When using a version other than Windows 10:

[Start] menu > App or program list > [Canon] folder > [MF Scan Utility] folder

**For other software or electronic manuals:**

Taskbar or [Desktop] screen

## Related Topics

---

- ▶ [About the MF Driver and MF Scan Utility\(P. 9\)](#)
- ▶ [Uninstalling the MF Driver\(P. 47\)](#)

## [Easy Installation] From the DVD-ROM (USB Connection)

---

This explains the procedure for installing for a device connected by USB with [Easy Installation] from the supplied DVD-ROM. In this procedure, as well as the MF driver, standard software and electronic manuals are installed.

### Prerequisites

---

- **System Requirements(P. 15)**
- **Installation Preparations and Precautions(P. 16)**
- When starting the computer, log on as a member of Administrators.
- [Desktop] screen display (when using Windows 8.1/Server 2012/Server 2012 R2)
- The USB cable is not connected

Connect the USB cable according to the instructions in the screen. If you connected the USB cable and installed, disconnect the USB cable and reinstall. Also, the USB cable is not supplied with this product. Prepare it separately.

### Procedures

---

**1 Turn off the device.**

**2 Set the DVD-ROM in the computer → click [Easy Installation].**

If the DVD-ROM menu is not displayed, click the subsequent "Open details."

In the following procedure, start the installer. For the DVD-ROM drive name, enter "D:."

- If a message prompting you to insert a DVD-ROM is displayed or if Windows Explorer is displayed: Execute [MInst.exe].
- If nothing is displayed: [Run] > enter [D:\MInst.exe] > execute [MInst.exe].

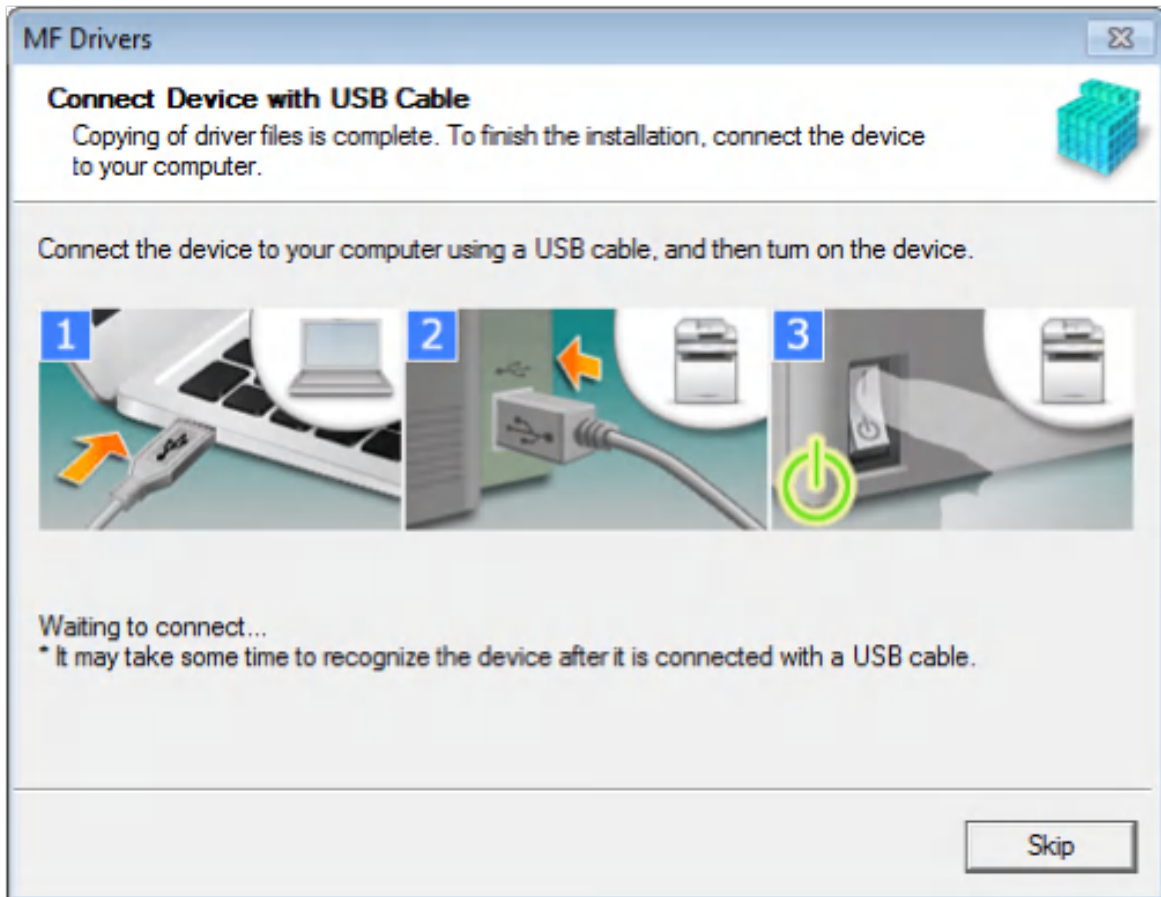
**3 If the [Select the Type of Connection] screen is displayed, select [USB Connection] → click [Next].**

**4 Click [Install].**

**5 Read the license agreement → click [Yes].**

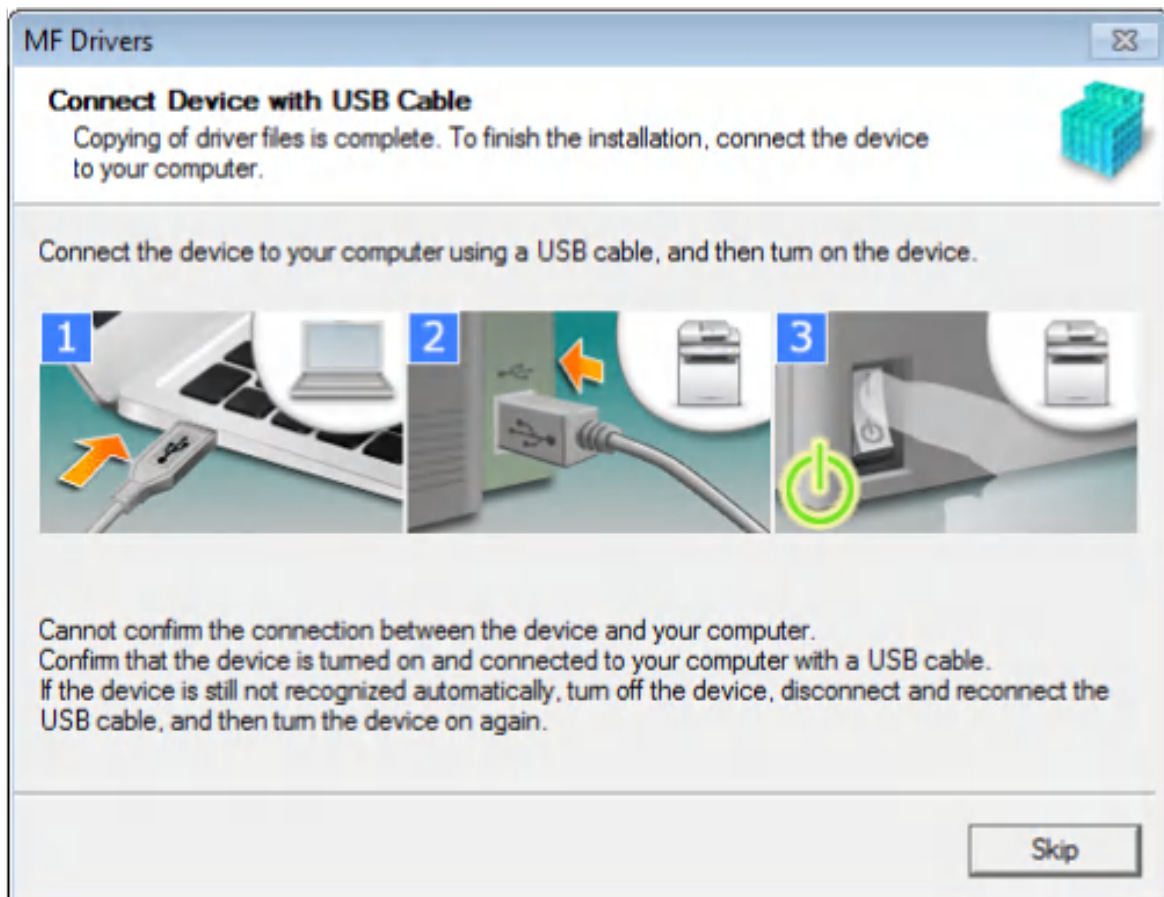
**6 Select a language → click [Next].**

**7 When the following screen appears, connect the device and computer with a USB cable → turn on the device.**



If you could not confirm the connection between the device and the computer, click "Open details."

If the following screen is displayed, turn the device off, then reconnect the USB cable and turn the device on again.



**8** Click [Exit].

**9** Install the software according to the instructions on the screen.

**10** Eject the DVD-ROM, select [Restart Computer Now (Recommended)], and click [Restart].

If installed correctly, an MF driver or software icon is displayed in the locations shown next. If the icon is not displayed, uninstall the MF driver or software and reinstall it.

**For a printer driver or fax driver:**

Windows Control Panel > [Devices and Printers].

**For a scanner driver:**

Windows Control Panel > [Scanners and Cameras].

**For MF Scan Utility:**

When using Windows 10:

Start menu > List of apps

When using a version other than Windows 10:

[Start] menu > App or program list > [Canon] folder > [MF Scan Utility] folder

**For other software or electronic manuals:**

Taskbar or [Desktop] screen

## Related Topics

---

- ▶ [About the MF Driver and MF Scan Utility\(P. 9\)](#)
- ▶ [Uninstalling the MF Driver\(P. 47\)](#)

## [Custom Installation] From the DVD-ROM (USB Connection)

---

This explains the procedure for installing for a device connected by USB with [Custom Installation] from the supplied DVD-ROM.

With this procedure, you can specify which software and manuals you want to install.

### Prerequisites

---

- **System Requirements(P. 15)**
- **Installation Preparations and Precautions(P. 16)**
- When starting the computer, log on as a member of Administrators.
- [Desktop] screen display (when using Windows 8.1/Server 2012/Server 2012 R2)
- The USB cable is not connected

Connect the USB cable according to the instructions in the screen. If you connected the USB cable and installed, disconnect the USB cable and reinstall. Also, the USB cable is not supplied with this product. Prepare it separately.

### Procedures

---

**1 Turn off the device.**

**2 Set the DVD-ROM in the computer → click [Custom Installation].**

If the DVD-ROM menu is not displayed, click the subsequent "Open details."

In the following procedure, start the installer. For the DVD-ROM drive name, enter "D:."

- If a message prompting you to insert a DVD-ROM is displayed or if Windows Explorer is displayed: Execute [MInst.exe].
- If nothing is displayed: [Run] > enter [D:\MInst.exe] > execute [MInst.exe].

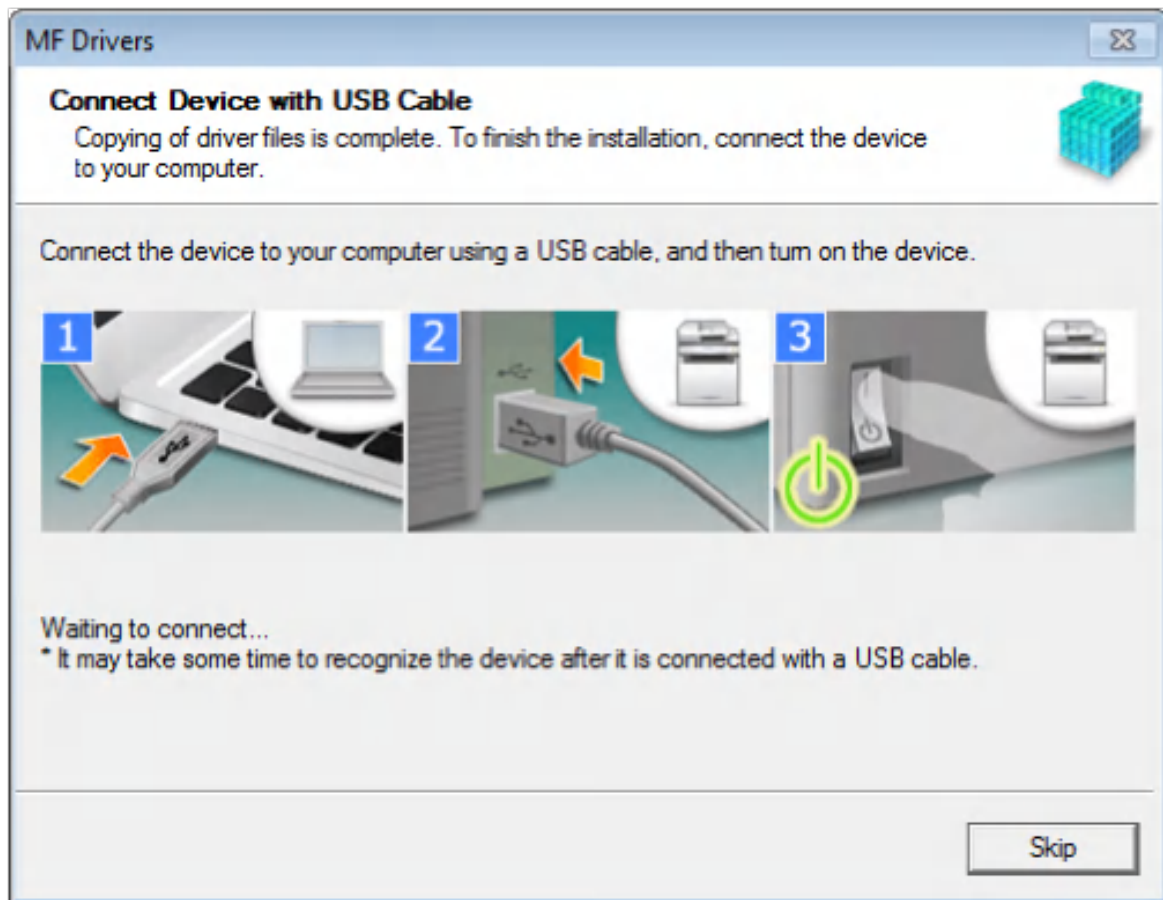
**3 If the [Select the Type of Connection] screen is displayed, select [USB Connection] → click [Next].**

**4 Select the software you want to install → click [Install].**

**5 Read the license agreement → click [Yes].**

**6 Select a language → click [Next].**

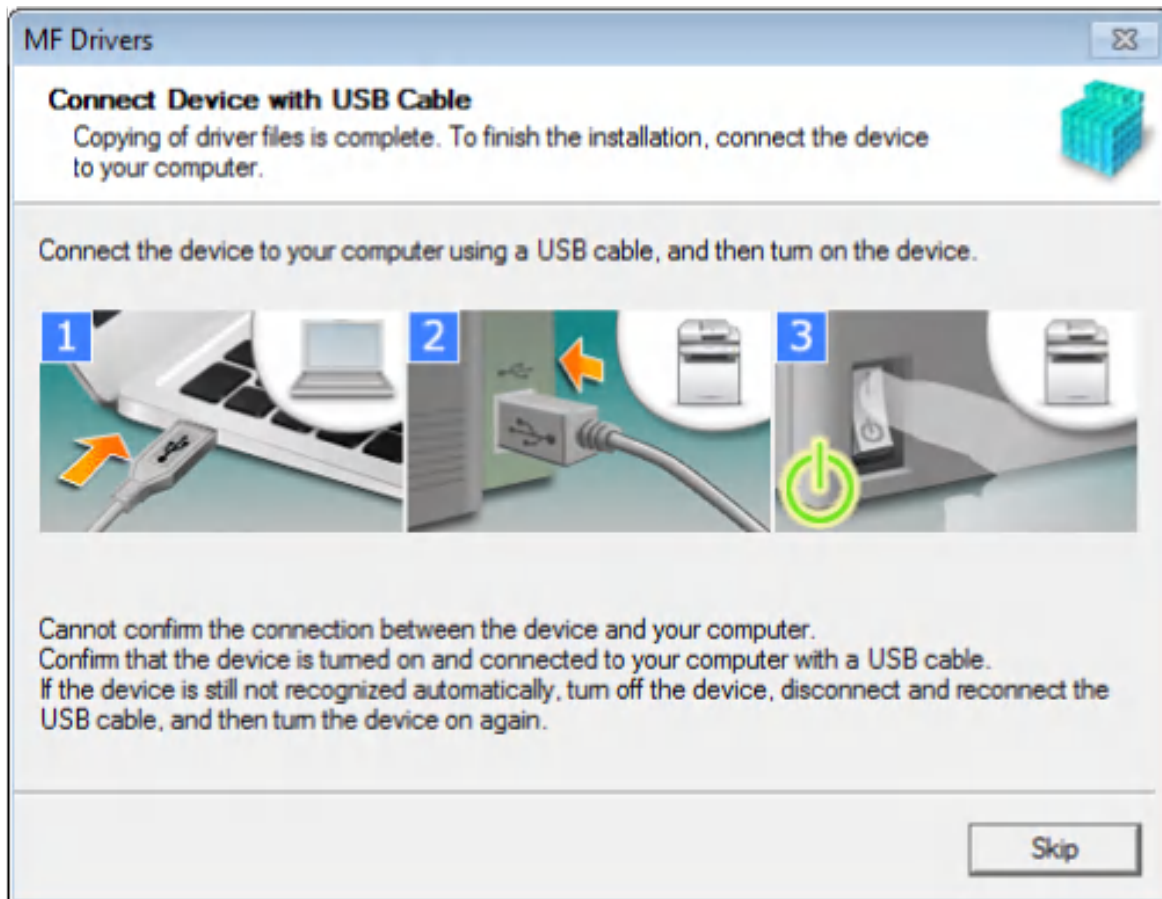
- 7** When the following screen appears, connect the device and computer with a USB cable  
→ turn on the device.



If you could not confirm the connection between the device and the computer, click "Open details."

If the following screen is displayed, turn the device off, then reconnect the USB cable and turn the device on again.





- 8** Click [Exit].
- 9** If you selected MF Scan Utility, check the instructions on the screen → click [Next] if you want to continue with the installation.
- 10** Select a language → click [Next].
- 11** Install the software according to the instructions on the screen → click [Next].
- 12** Eject the DVD-ROM, select [Restart Computer Now (Recommended)], and click [Restart].

If installed correctly, an MF driver or software icon is displayed in the locations shown next. If the icon is not displayed, uninstall the MF driver or software and reinstall it.

**For a printer driver or fax driver:**

Windows Control Panel > [Devices and Printers].

**For a scanner driver:**

Windows Control Panel > [Scanners and Cameras].

**For MF Scan Utility:**

When using Windows 10:

Start menu > List of apps

When using a version other than Windows 10:

[Start] menu > App or program list > [Canon] folder > [MF Scan Utility] folder

**For other software or electronic manuals:**

Taskbar or [Desktop] screen

## Related Topics

---

- ▶ [About the MF Driver and MF Scan Utility\(P. 9\)](#)
- ▶ [Uninstalling the MF Driver\(P. 47\)](#)

## Installing a Downloaded MF Driver (Network Connection)

---

This explains the procedure for installing the newest version of the MF driver using an installer downloaded from the web site. It automatically searches for devices on the network and installs the MF driver.

Install with this procedure when the MF driver included in the supplied DVD-ROM is not compatible with the operating system of the computer you are using.

### Prerequisites

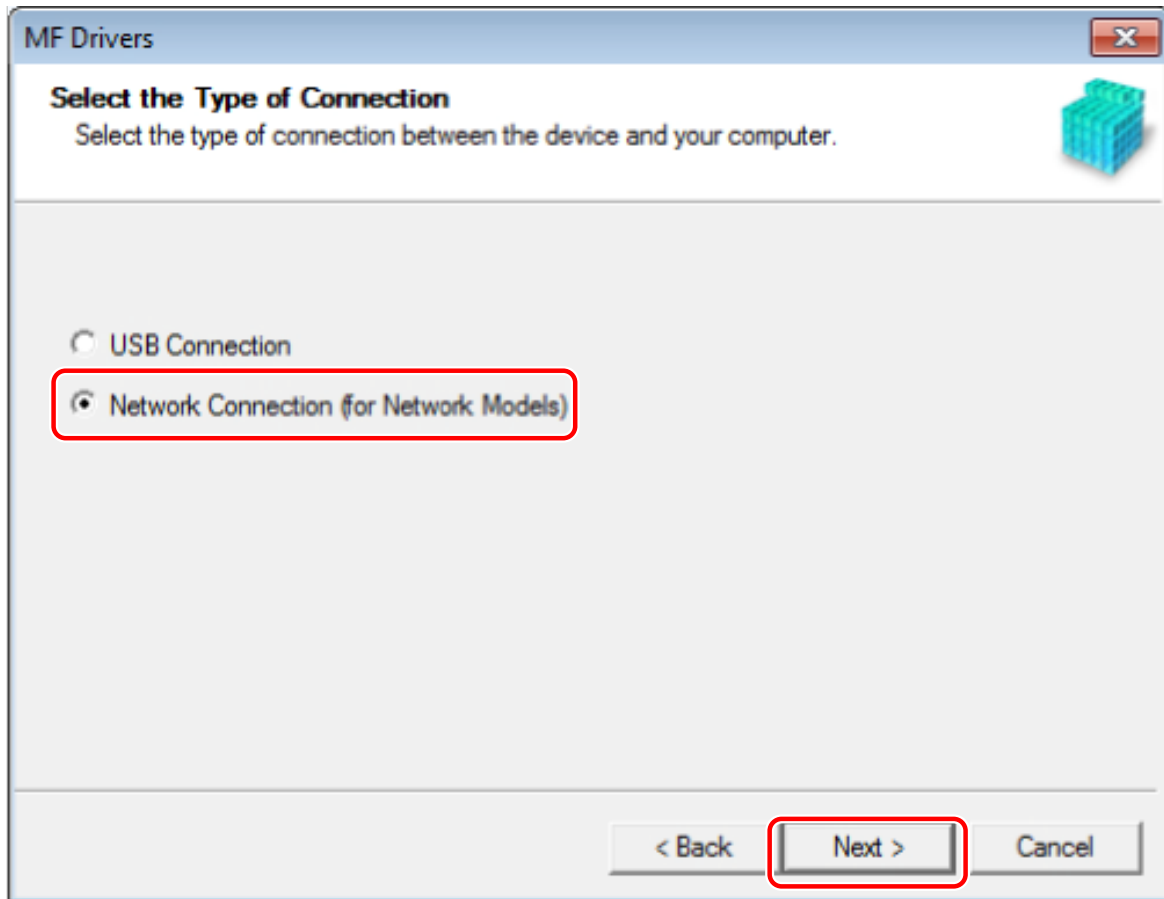
---

- **System Requirements(P. 15)**
- A TCP/IP Network Environment  
If you do not know the network environment you are using, check with your network administrator.
- The device must be in the same subnet as the computer you are using.
- **Installation Preparations and Precautions(P. 16)**
- When starting the computer, log on as a member of Administrators.
- [Desktop] screen display (when using Windows 8.1/Server 2012/Server 2012 R2)

### Procedures

---

- 1 Double-click the downloaded installer.**
- 2 Select a language → click [Next].**
- 3 Read the license agreement → click [Yes].**
- 4 If the following screen is displayed, select [Network Connection (for Network Models)] → click [Next].**



## 5 Select the device you are using → click [Next].



### NOTE

- If the device is not displayed in [Device List], check the connection state between the computer and device and the IP address settings, and click [Update Device List]. If the device is still not displayed, click [Search by IP Address] → enter the IP address of the device → click [OK]. For the IP address confirmation method, refer to the manual of the device.

## 6 Select the driver to install → click [Next] → set as required.

If a list of drivers corresponding to the page description language is displayed after selecting a printer driver in the [Select Driver] screen, select the driver you are going to use.

If you want to use a print server, select the following.

- Select the [Select Driver] screen > [Canon Driver Information Assist Service] (when acquiring device information).
- Select the [Confirm Settings] screen > [Use as Shared Printer] or [Use as Shared Fax] (when you want to use the computer you are installing to as a print server).

## 7 Check the settings → click [Start].

## 8 Setting the default printer and test printing.

When setting as a default driver: select the driver → click [Next]

When test printing: select the check box of the driver

## 9 Click [Exit].

If installed correctly, an MF driver icon is displayed in the locations shown next. If the icon is not displayed, uninstall the MF driver and reinstall it.

### **For a printer driver or fax driver:**

Windows Control Panel > [Devices and Printers].

### **For a scanner driver:**

Windows Control Panel > [Scanners and Cameras].

## Related Topics

---

- ▶ [About the MF Driver and MF Scan Utility\(P. 9\)](#)
- ▶ [Uninstalling the MF Driver\(P. 47\)](#)

## Installing a Downloaded MF Driver (USB Connection)

---

This explains the procedure for installing the newest version of the MF driver using an installer downloaded from the web site. It installs the MF driver to a device connected by USB.

Install with this procedure when the MF driver included in the supplied DVD-ROM is not compatible with the operating system of the computer you are using.

### Prerequisites

---

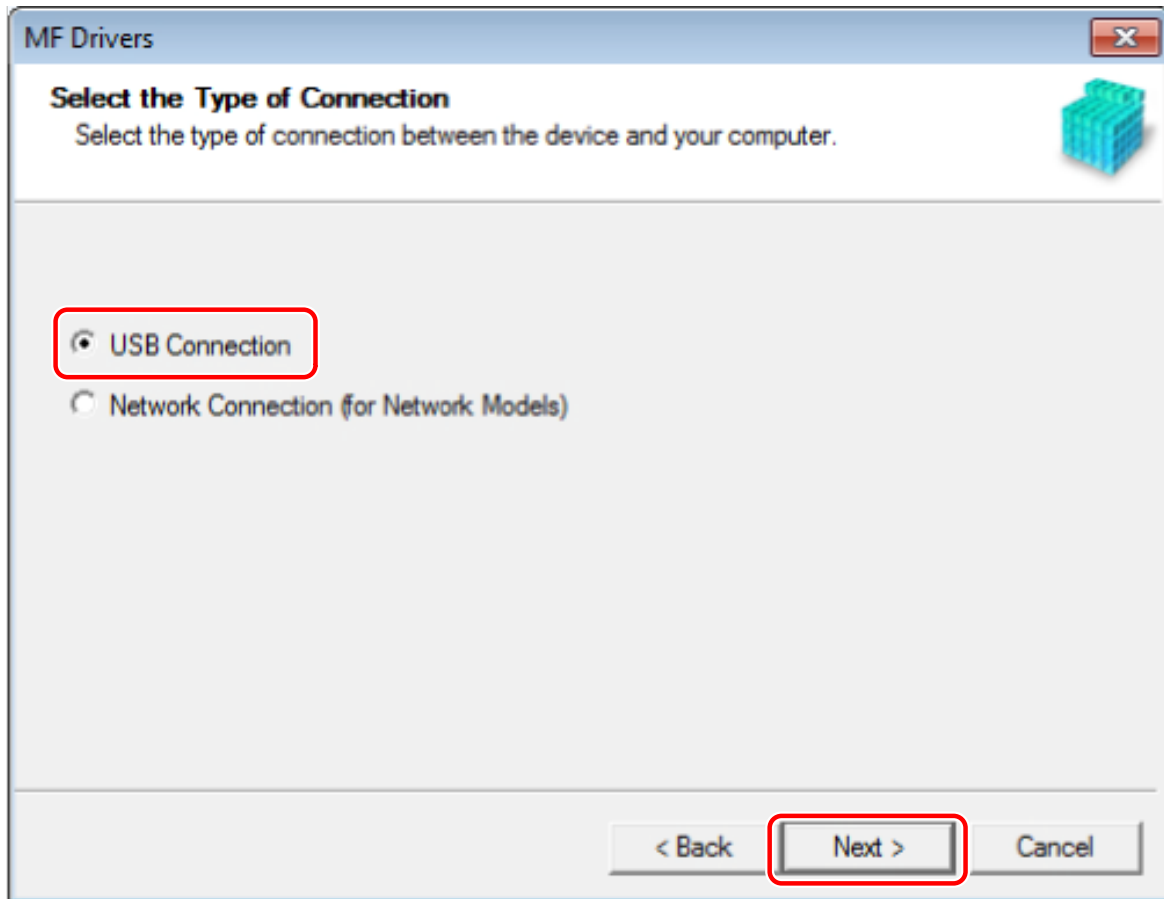
- **System Requirements(P. 15)**
- **Installation Preparations and Precautions(P. 16)**
- When starting the computer, log on as a member of Administrators.
- [Desktop] screen display (when using Windows 8.1/Server 2012/Server 2012 R2)
- The USB cable is not connected

Connect the USB cable according to the instructions in the screen. If you connected the USB cable and installed, disconnect the USB cable and reinstall. Also, the USB cable is not supplied with this product. Prepare it separately.

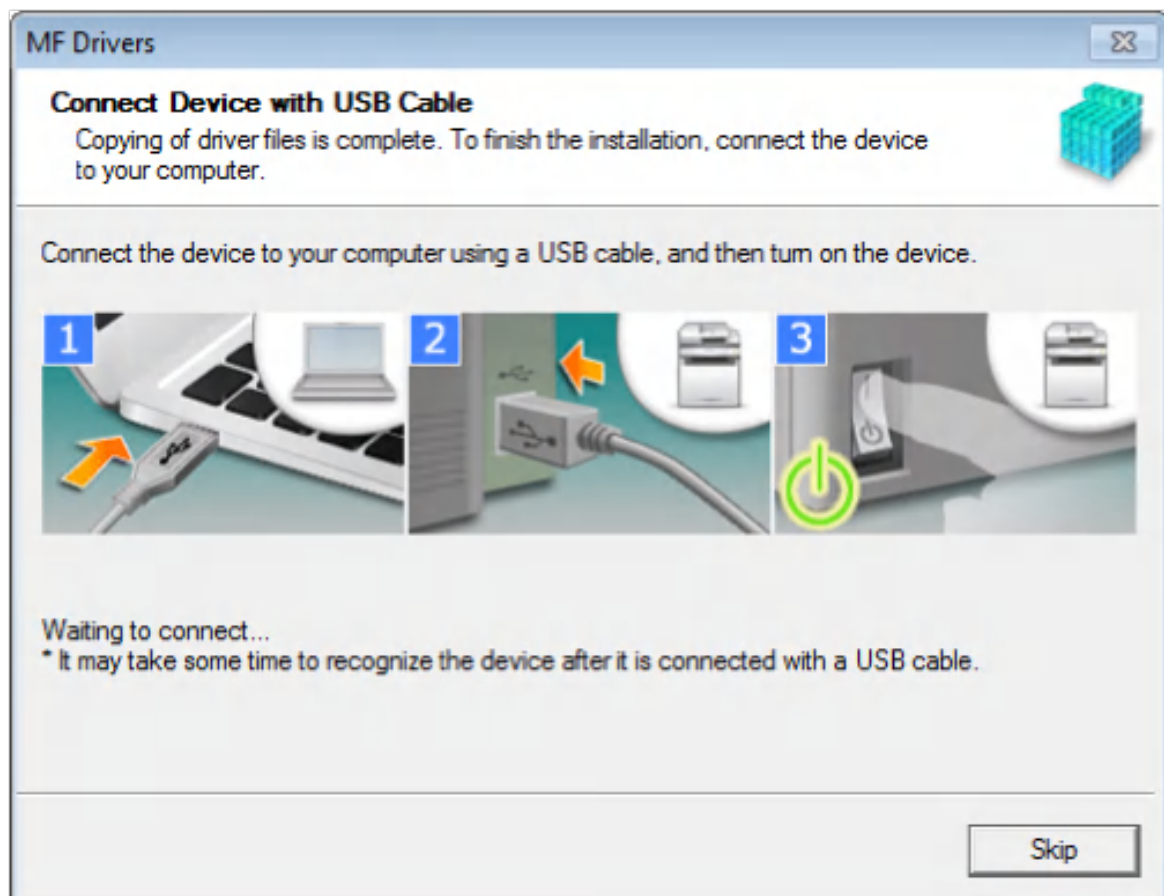
### Procedures

---

- 1 Turn off the device.**
- 2 Double-click the downloaded installer.**
- 3 Select a language → click [Next].**
- 4 Read the license agreement → click [Yes].**
- 5 If the following screen is displayed, select [USB Connection] → click [Next].**

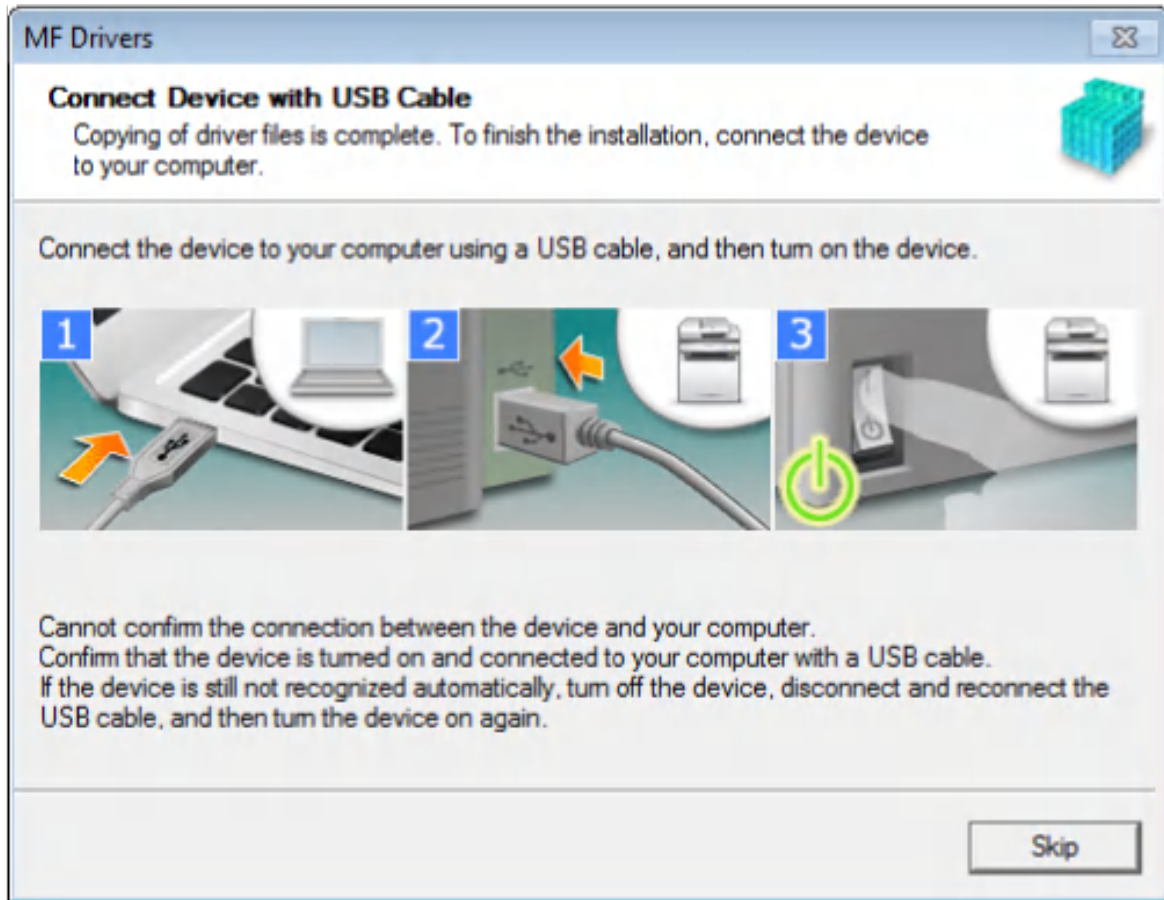


- 6** When the following screen appears, connect the device and computer with a USB cable → turn on the device.



If you could not confirm the connection between the device and the computer, click "Open details."

If the following screen is displayed, turn the device off, then reconnect the USB cable and turn the device on again.



## 7 Click [Exit].

If installed correctly, an MF driver icon is displayed in the locations shown next. If the icon is not displayed, uninstall the MF driver and reinstall it.

### For a printer driver or fax driver:

Windows Control Panel > [Devices and Printers].

### For a scanner driver:

Windows Control Panel > [Scanners and Cameras].

## Related Topics

- ▶ [About the MF Driver and MF Scan Utility\(P. 9\)](#)
- ▶ [Uninstalling the MF Driver\(P. 47\)](#)



## Installing MF Scan Utility

---

This explains the procedure for downloading the newest MF Scan Utility from the web site and installing it. Install with this procedure when the MF Scan Utility included in the supplied DVD-ROM is not compatible with the operating system of the computer you are using.

### Prerequisites

---

- **System Requirements(P. 15)**
- **Installation Preparations and Precautions(P. 16)**
- When starting the computer, log on as a member of Administrators.
- [Desktop] screen display (when using Windows 8.1)

### Procedures

---

- 1 Decompress the downloaded file.**
- 2 Select a language → click [Next].**
- 3 Read the license agreement → click [Yes].**
- 4 Click [Complete].**

If installed correctly, an MF Scan Utility icon is displayed in the following location.

**For Windows 10:**

Start menu > List of apps

**For a version other than Windows 10:**

[Start] menu > App or program list > [Canon] folder > [MF Scan Utility] folder

### Related Topics

---

- **About the MF Driver and MF Scan Utility(P. 9)**

# Installation Without Using the Installer

<b>Installation Without Using the Installer</b> .....	41
<b>Installing by Specifying an inf File</b> .....	42
<b>Installing Using a WSD Port</b> .....	44

## Installation Without Using the Installer

---

This explains the procedure for installing the driver without using the usual installer.

- ▶ **Installing by Specifying an inf File(P. 42)**
- ▶ **Installing Using a WSD Port(P. 44)**

## Installing by Specifying an inf File

---

You can install a driver by specifying an inf file with the add printer function of Windows. The following explanation will be given with respect to installation with a standard TCP/IP port.

### Prerequisites

---

- When starting the computer, logon as a member of Administrators.
- Confirm the IP address of the device.
- Prepare the inf file.  
Acquire the driver from the Canon web site (<https://global.canon/>) or the supplied DVD-ROM, and prepare the inf file.
- The inf file is stored in the [Driver] folder in the folder of the driver you have acquired.
- [Desktop] screen display (when using Windows 8.1/Server 2012/Server 2012 R2)

### Procedures

---

#### 1 Start the Windows add printer wizard.

**If starting from [Settings] (Windows 10/Server 2016/Server 2019 only)**

- (1) Click [Devices] → click [Add a printer or scanner] from [Printers & scanners].
- (2) Click [The printer that I want isn't listed].

**If starting from the Control Panel**

- (1) Display [Devices and Printers] → click [Add a printer].
- (2) When the screen for selecting a device is displayed, click [The printer that I want isn't listed].

#### 2 Select local printer addition and proceed to the next screen.

#### 3 Select [Create a new port] → select [Standard TCP/IP Port] from [Type of port] → click [Next].

#### 4 In the [Add a printer] screen, click [Have Disk].

#### 5 Click [Browse] → select the prepared inf file.

#### 6 Select the device to use from [Printers] → click [Next].

#### 7 Install the driver according to the instructions on the screen → click [Finish].

## Installation Without Using the Installer

The installed device is displayed in [Devices and Printers] in the Windows Control Panel.

## Installing Using a WSD Port

---

This explains the procedure for searching for devices on a network from Windows and installing a printer using a WSD (Web Services on Devices) port.

### Prerequisites

---

- **Installing by Specifying an inf File(P. 42)**  
Specify a temporary port ([LPT1] etc.) and install the printer driver.

### Procedures

---

**1** Display [Devices and Printers] → Click [Add a device].

**2** Select the target device → click [Next].

The installed device is displayed in [Devices and Printers] in the Windows Control Panel.



#### NOTE

- After installation is complete, the icon of the printer added after installation specifying the temporary port is unnecessary. To delete the icon, right-click the icon to delete → click [Remove device] or [Uninstall].

# Uninstallation

<b>Uninstallation</b> .....	46
<b>Uninstalling the MF Driver</b> .....	47
<b>Uninstalling MF Scan Utility</b> .....	49
<b>Uninstall Method for Software</b> .....	50

# Uninstallation

---

This explains the procedure for uninstalling MF drivers and software that are no longer needed.

- ▶ **Uninstalling the MF Driver(P. 47)**
- ▶ **Uninstalling MF Scan Utility(P. 49)**
- ▶ **Uninstall Method for Software(P. 50)**



## Uninstalling the MF Driver

---

This explains the procedure for uninstalling the MF driver. Perform this procedure if an MF driver has become unnecessary.

There are two methods for uninstalling: uninstalling from Windows, and using the uninstaller. If you cannot find the MF driver in the Windows screen, you can uninstall using the uninstaller.

### Prerequisites

---

- MF driver installation
- When starting the computer, log on as a member of Administrators.
- [Desktop] screen display (when using Windows 8.1/Server 2012/Server 2012 R2)

### Procedures

---

#### To Uninstall from Windows

##### 1 Start the uninstaller of the driver.

###### **In Windows 10/Server 2016/Server 2019**

- (1) Display [Settings] > [Apps] or [System] > [Apps & features].
- (2) Select the driver you want to uninstall → click [Uninstall].

###### **In operating systems other than the above**

- (1) Display [Control Panel] > [Programs] > [Uninstall a program].
- (2) Select the driver you want to uninstall → click [Uninstall/Change].

If you cannot find the MF driver when selecting the driver, uninstall it according to the procedure in " **To Uninstall Using the Uninstall File(P. 47)** ."

##### 2 When the uninstaller is displayed, click [Uninstall].

##### 3 If the confirm deletion message is displayed, click [Yes].

#### To Uninstall Using the Uninstall File

Uninstall the driver with the uninstall file in the accompanying DVD-ROM or downloaded driver folder.

##### 1 Double-click one of the following files.

- When using the file in the folder of the installed driver  
Use the [DelDrv.exe] file corresponding to the driver in the following folder.

<install folder>\Canon\CanonMF

- When using the file in the folder of the driver you have acquired  
Use the following file in the folder corresponding to the driver and environment.  
misc\DelDrv.exe

**2** When the uninstaller is displayed, click [Uninstall].

**3** If the confirm deletion message is displayed, click [Yes].

# Uninstalling MF Scan Utility

---

This explains the procedure for uninstalling only the MF Scan Utility if the MF Scan Utility is no longer needed.

## Prerequisites

---

- MF Scan Utility installation
- When starting the computer, log on as a member of Administrators.
- [Desktop] screen display (when using Windows 8.1)

## Procedures

---

### 1 Start the uninstaller of the driver.

#### In Windows 10

- (1) Display [Settings] > [Apps] > [Apps & features].
- (2) Select the MF Scan Utility you want to uninstall → click [Uninstall].

#### In operating systems other than the above

- (1) Display [Control Panel] > [Programs] > [Uninstall a program].
- (2) Select the MF Scan Utility you want to uninstall → click [Uninstall/Change].

### 2 If the confirm deletion message is displayed, click [Yes].

### 3 Click [OK].

## Uninstall Method for Software

---

If software installed at the same time as the MF driver is no longer needed, you can uninstall the software by the following method.

Uninstall the various types of software from [Programs and Features] or [Add or remove programs] in Windows after logging on with an Administrator account.

# Appendix

<b>Appendix</b> .....	52
<b>Creating a Shortcut to the Online Manual</b> .....	53
Installing the Shortcut to the Online Manual .....	54
Uninstalling the Shortcut to the Online Manual .....	55

## Appendix

---

Contains additional information about the printer driver, such as restrictions, etc.

▶ **Creating a Shortcut to the Online Manual(P. 53)**

## Creating a Shortcut to the Online Manual

---

You can create a shortcut on your desktop to the website where online manuals for Canon products are available.

- ▶ **Installing the Shortcut to the Online Manual(P. 54)**
- ▶ **Uninstalling the Shortcut to the Online Manual(P. 55)**

## Installing the Shortcut to the Online Manual

---

This explains the procedure for installing a shortcut to the website where online manuals for Canon products are available.

### **1 Insert the supplied DVD-ROM into your computer.**

### **2 Click [Custom Installation].**

If the DVD-ROM menu is not displayed, click the subsequent "Open details."

Start the installer by following the procedure below.

- If a message prompting you to insert a DVD-ROM is displayed or if Windows Explorer is displayed: Execute [MInst.exe].
- If nothing is displayed: Double-click the DVD-ROM icon.

### **3 Select only the [Manuals] checkbox in the [Custom Installation] screen → click [Install].**

### **4 Read the license agreement → click [Yes].**

### **5 Check the installation destination → click [Install].**

If you want to change the installation destination, click [Browse].

The installation operation begins.

### **6 Click [Exit].**

### **7 Click [Next] → click [Exit].**

A shortcut to the website where online manuals for Canon products are available is created on your desktop.



## Uninstalling the Shortcut to the Online Manual

---

If the shortcut to the website where online manuals for Canon products are available is no longer necessary, uninstall it according to the following procedure.

**1 Insert the supplied DVD-ROM into your computer.**

**2 Click [Start Software Programs].**

If the DVD-ROM menu is not displayed, click the subsequent "Open details."

Start the installer by following the procedure below.

- If a message prompting you to insert a DVD-ROM is displayed or if Windows Explorer is displayed: Execute [MInst.exe].
- If nothing is displayed: Double-click the DVD-ROM icon.

**3 Click [Start] for the [Manual Uninstaller] in the [Start Software Programs] screen.**

**4 Click [Next].**

The uninstallation operation begins.

**5 Click [Exit].**

**6 In the [Start Software Programs] screen, click [Back].**

**7 Click [Exit] in the setup screen.**

This Font Software is licensed under the SIL Open Font License, Version 1.1.

This license is copied below, and is also available with a FAQ at: <http://scripts.sil.org/OFL>

-----  
SIL OPEN FONT LICENSE Version 1.1 - 26 February 2007  
-----

#### PREAMBLE

The goals of the Open Font License (OFL) are to stimulate worldwide development of collaborative font projects, to support the font creation efforts of academic and linguistic communities, and to provide a free and open framework in which fonts may be shared and improved in partnership with others.

The OFL allows the licensed fonts to be used, studied, modified and redistributed freely as long as they are not sold by themselves. The fonts, including any derivative works, can be bundled, embedded, redistributed and/or sold with any software provided that any reserved names are not used by derivative works. The fonts and derivatives, however, cannot be released under any other type of license. The requirement for fonts to remain under this license does not apply to any document created using the fonts or their derivatives.

#### DEFINITIONS

"Font Software" refers to the set of files released by the Copyright Holder(s) under this license and clearly marked as such. This may include source files, build scripts and documentation.

"Reserved Font Name" refers to any names specified as such after the copyright statement(s).

"Original Version" refers to the collection of Font Software components as distributed by the Copyright Holder(s).

"Modified Version" refers to any derivative made by adding to, deleting, or substituting -- in part or in whole -- any of the components of the Original Version, by changing formats or by porting the Font Software to a new environment.

"Author" refers to any designer, engineer, programmer, technical writer or other person who contributed to the Font Software.

#### PERMISSION & CONDITIONS

Permission is hereby granted, free of charge, to any person obtaining a copy of the Font Software, to use, study, copy, merge, embed, modify, redistribute, and sell modified and unmodified copies of the Font Software, subject to the following conditions:

- 1) Neither the Font Software nor any of its individual components, in Original or Modified Versions, may be sold by itself.
- 2) Original or Modified Versions of the Font Software may be bundled, redistributed and/or sold with any software, provided that each copy contains the above copyright notice and this license. These can be included either as stand-alone text files, human-readable headers or in the appropriate machine-readable metadata fields within text or binary files as long as those fields can be easily viewed by the user.
- 3) No Modified Version of the Font Software may use the Reserved Font Name(s) unless explicit written permission is granted by the corresponding Copyright Holder. This restriction only applies to the primary font name as presented to the users.
- 4) The name(s) of the Copyright Holder(s) or the Author(s) of the Font Software shall not be used to promote, endorse or advertise any Modified Version, except to acknowledge the contribution(s) of the Copyright Holder(s) and the Author(s) or with their explicit written permission.
- 5) The Font Software, modified or unmodified, in part or in whole, must be distributed entirely under this license, and must not be distributed under any other license. The requirement for fonts to remain under this license does not apply to any document created using the Font Software.

#### TERMINATION

This license becomes null and void if any of the above conditions are not met.

#### DISCLAIMER

THE FONT SOFTWARE IS PROVIDED "AS IS", WITHOUT WARRANTY OF ANY KIND, EXPRESS OR IMPLIED, INCLUDING BUT NOT LIMITED TO ANY WARRANTIES OF MERCHANTABILITY, FITNESS FOR A PARTICULAR PURPOSE AND NONINFRINGEMENT OF COPYRIGHT, PATENT, TRADEMARK, OR OTHER RIGHT. IN NO EVENT SHALL THE COPYRIGHT HOLDER BE LIABLE FOR ANY CLAIM, DAMAGES OR OTHER LIABILITY, INCLUDING ANY GENERAL, SPECIAL, INDIRECT, INCIDENTAL, OR CONSEQUENTIAL DAMAGES, WHETHER IN AN ACTION OF CONTRACT, TORT OR OTHERWISE, ARISING FROM, OUT OF THE USE OR INABILITY TO USE THE FONT SOFTWARE OR FROM OTHER DEALINGS IN THE FONT SOFTWARE.